

Drawing and layout according to indication without guarantee, please check latest drawing date and dimensions at site.

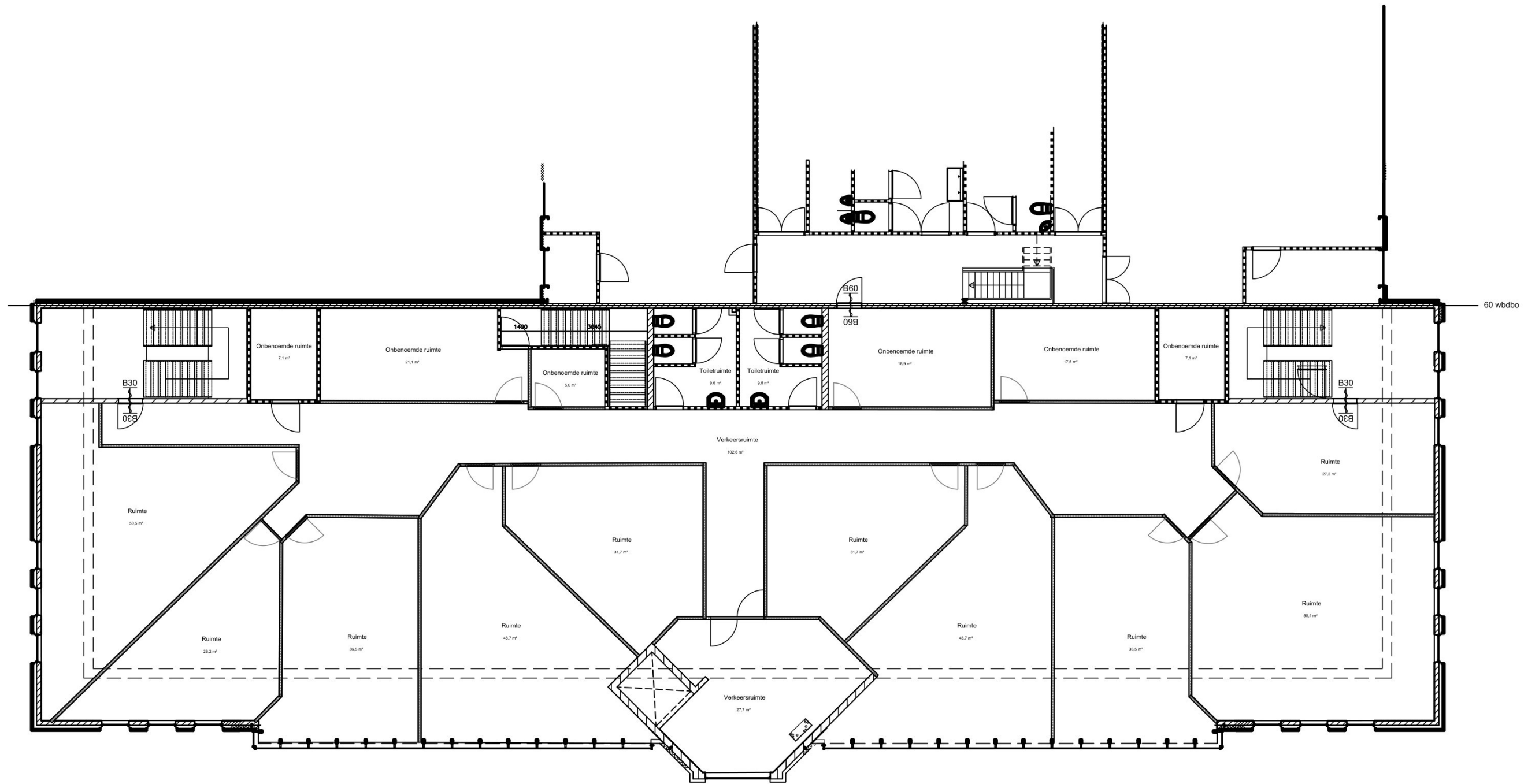
Bellweg 2
4104BJ Culemborg

Bestaande situatie BG



<i>datum:</i>	20-11-2025	<i>verd.:</i>	BG
<i>gewijzigd:</i>		<i>tek.:</i>	PLG001
<i>versie:</i>	A	<i>formaat:</i>	landscape A3
<i>schaal:</i>	1:150	<i>tek.:</i>	

This drawing is property of Being Spaces Copyright is reserved and the drawing is issued on the condition.

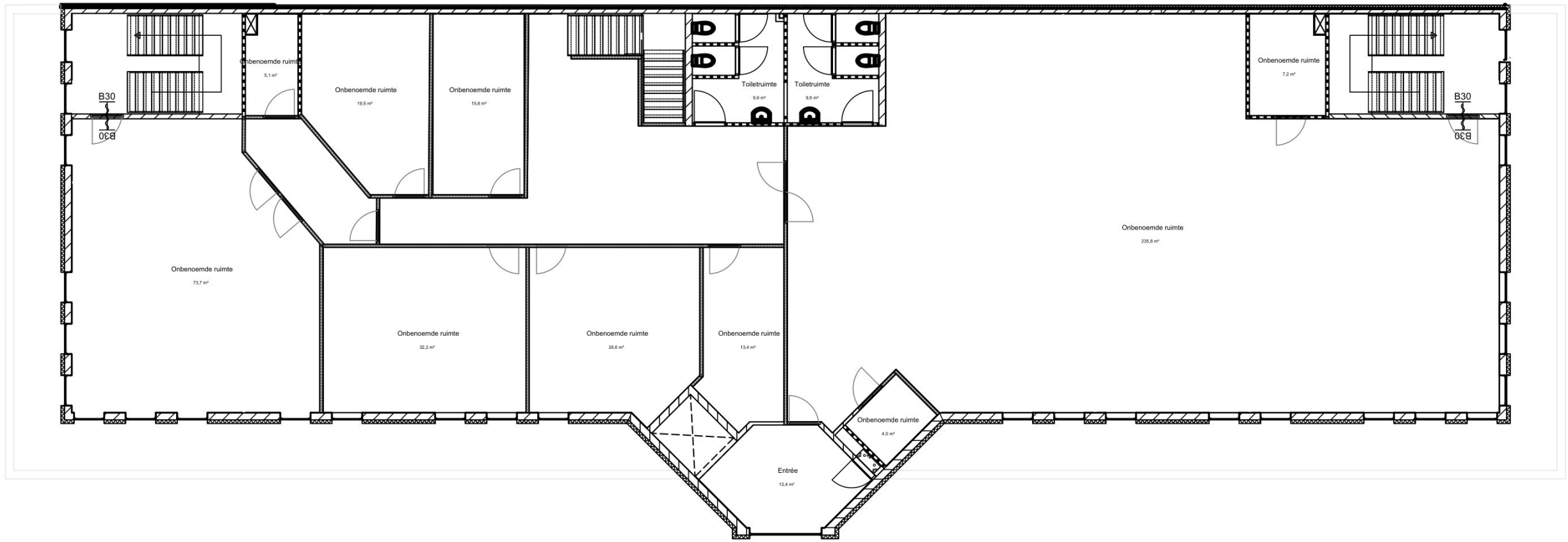


Drawing and layout according to indication without guarantee, please check latest drawing date and dimensions at site.

Bellweg 2 Bestaande situatie 1e VD
4104BJ Culemborg

BEING SPACES	<i>datum:</i> 20-11-2025	<i>verd.:</i> 1e
	<i>gewijzigd:</i>	<i>tek.:</i> PLG101
	<i>versie:</i> A	<i>formaat:</i> landscape A3
	<i>schaal:</i> 1:150	<i>tek.:</i>

This drawing is property of Being Spaces Copyright is reserved and the drawing is issued on the condition.



Drawing and layout according to indication without guarantee, please check latest drawing date and dimensions at site.

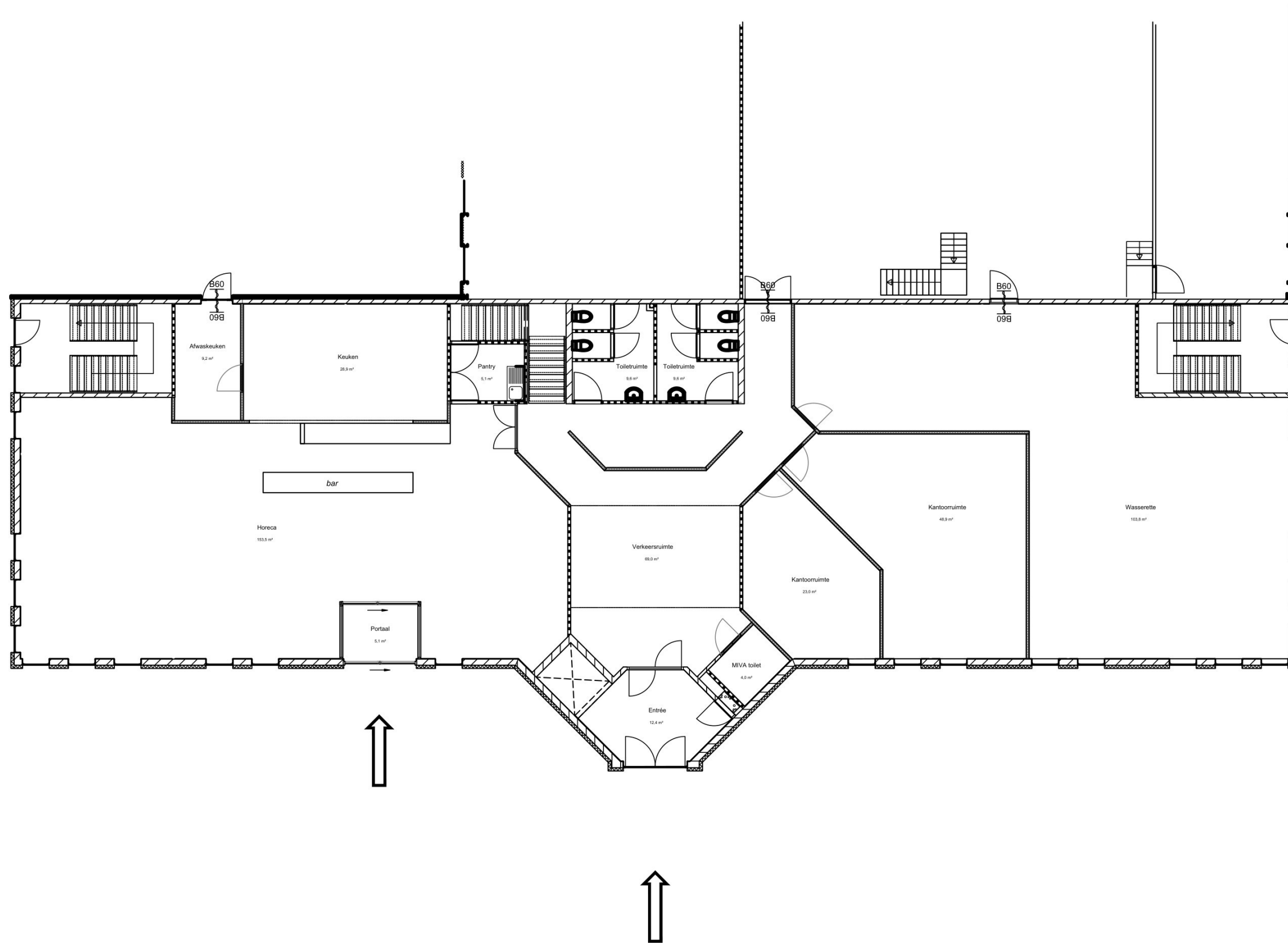
Bellweg 2
4104BJ Culemborg

Bestaande situatie 2e VD



datum:	20-11-2025	verd.:	1e
gewijzigd:		tek.:	PLG201
versie:	A	formaat:	landscape A3
schaal:	1:150	tek.:	

This drawing is property of Being Spaces Copyright is reserved and the drawing is issued on the condition.



60 wdbdo

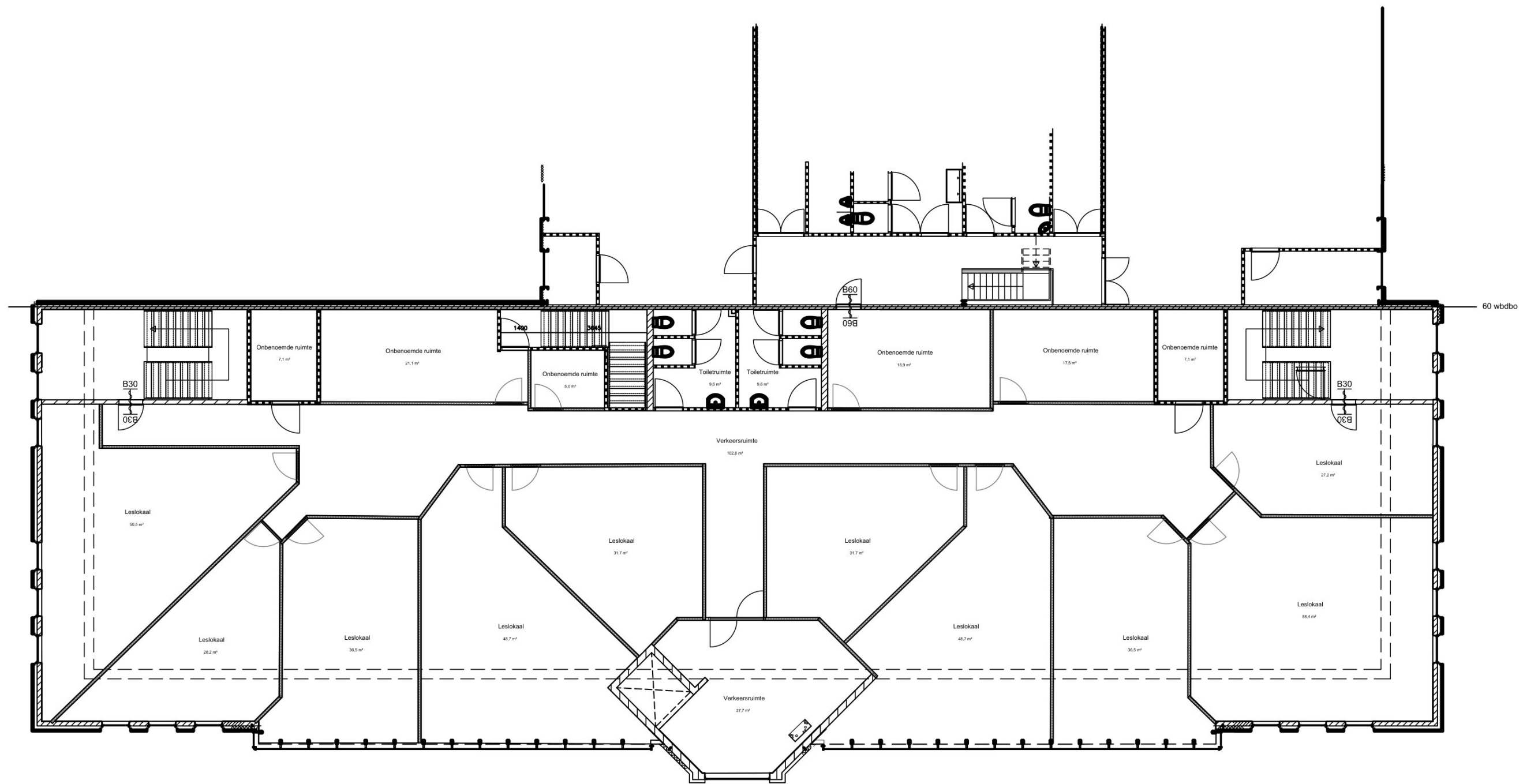
Drawing and layout according to indication without guarantee, please check latest drawing date and dimensions at site.

Bellweg 2
4104BJ Culemborg

Nieuwe situatie BG

BEING SPACES	<i>datum:</i>	20-11-2025	<i>verd.:</i>	BG
	<i>gewijzigd:</i>		<i>tek.:</i>	PLG002
	<i>versie:</i>	A	<i>formaat:</i>	landscape A3
	<i>schaal:</i>	1:150	<i>tek.:</i>	

This drawing is property of Being Spaces Copyright is reserved and the drawing is issued on the condition.



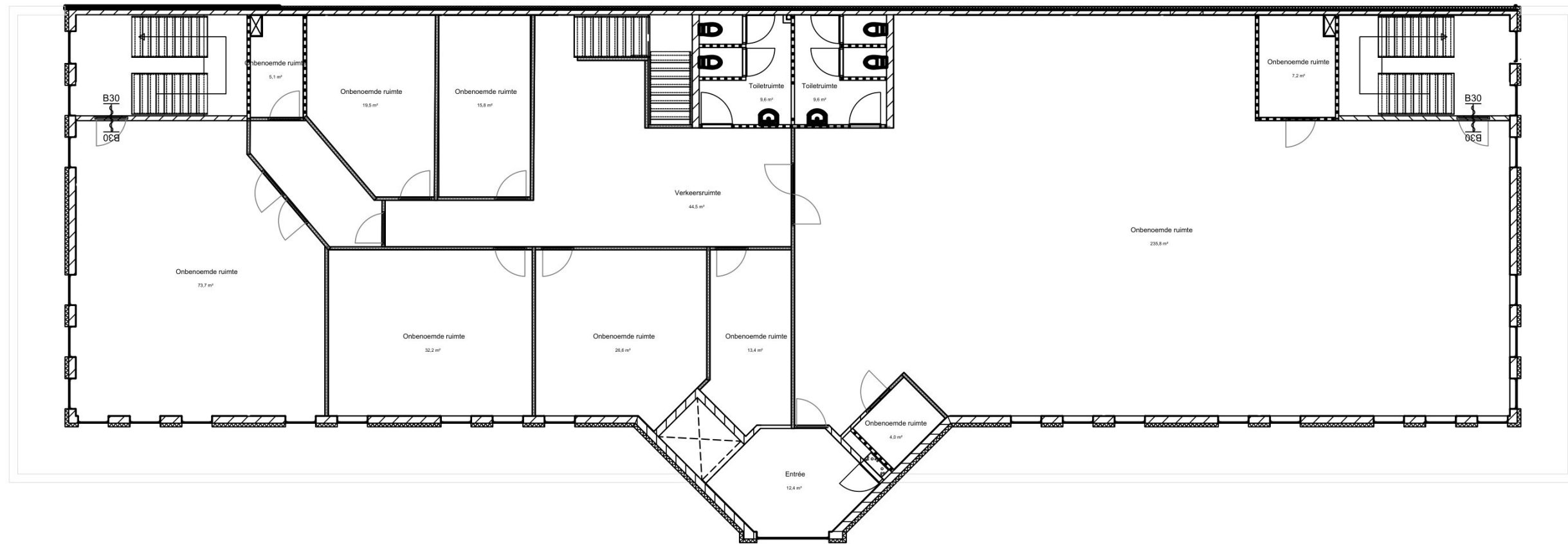
Drawing and layout according to indication without guarantee, please check latest drawing date and dimensions at site.

Bellweg 2
4104BJ Culemborg

Nieuwe situatie 1e VD

	<i>datum:</i>	20-11-2025	<i>verd.:</i>	1e
	<i>gewijzigd:</i>		<i>tek.:</i>	PLG102
	<i>versie:</i>	A	<i>formaat:</i>	landscape A3
	<i>schaal:</i>	1:150	<i>tek.:</i>	

This drawing is property of Being Spaces Copyright is reserved and the drawing is issued on the condition.

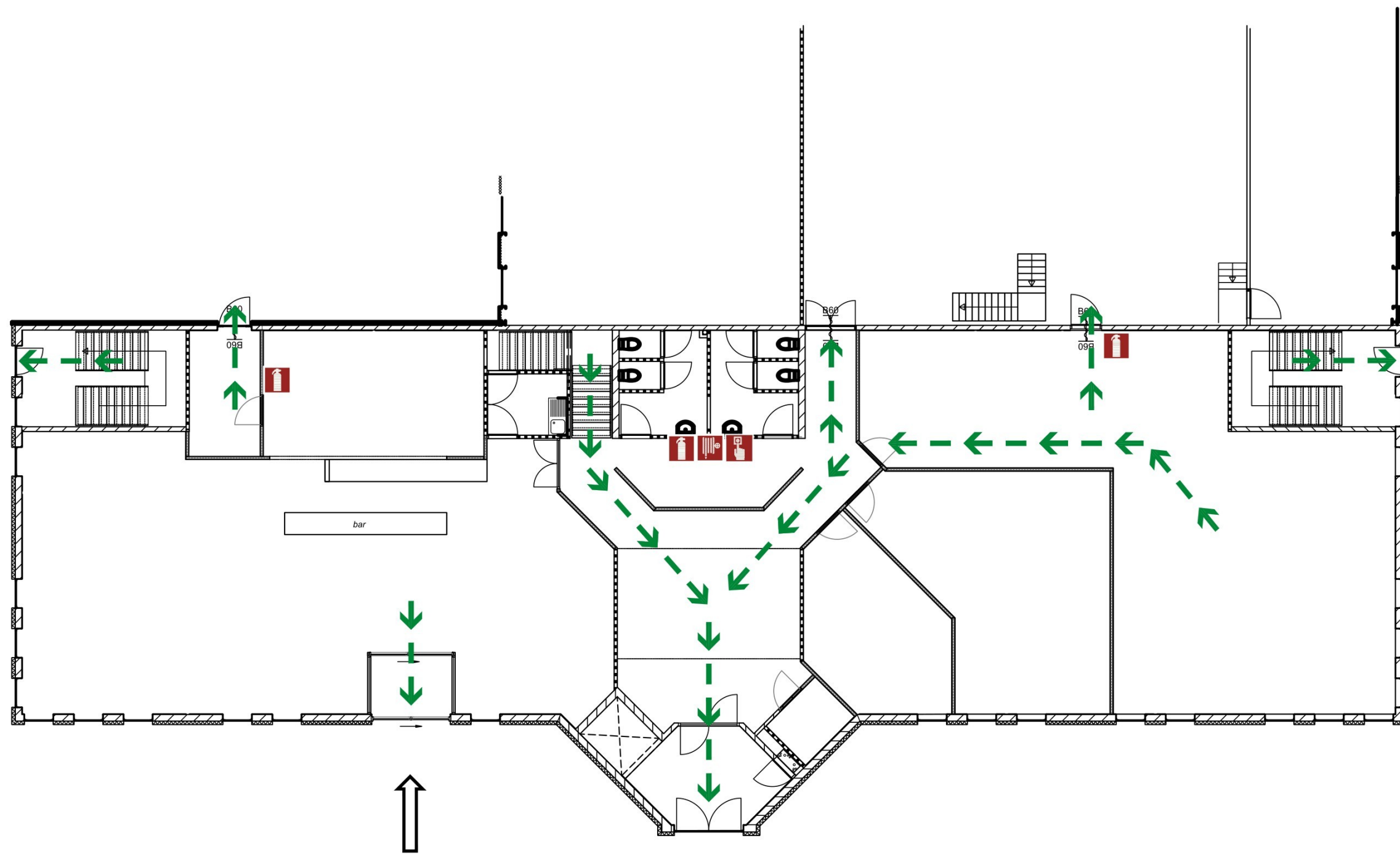


Drawing and layout according to indication without guarantee, please check latest drawing date and dimensions at site.

Bellweg 2 **Nieuwe situatie 2e VD**
4104BJ Culemborg

BEING SPACES	<i>datum:</i> 20-11-2025	<i>verd.:</i> 1e
	<i>gewijzigd:</i>	<i>tek.:</i> PLG202
	<i>versie:</i> A	<i>formaat:</i> landscape A3
	<i>schaal:</i> 1:150	<i>tek.:</i>

This drawing is property of Being Spaces Copyright is reserved and the drawing is issued on the condition.



60 wdbdo

Begane grond

RENVOOI:

-  brandslanghaspel
-  handbrandblusser
-  handbrandmelder
-  vluchtroute

Vloerbezetting
Pandbezetting

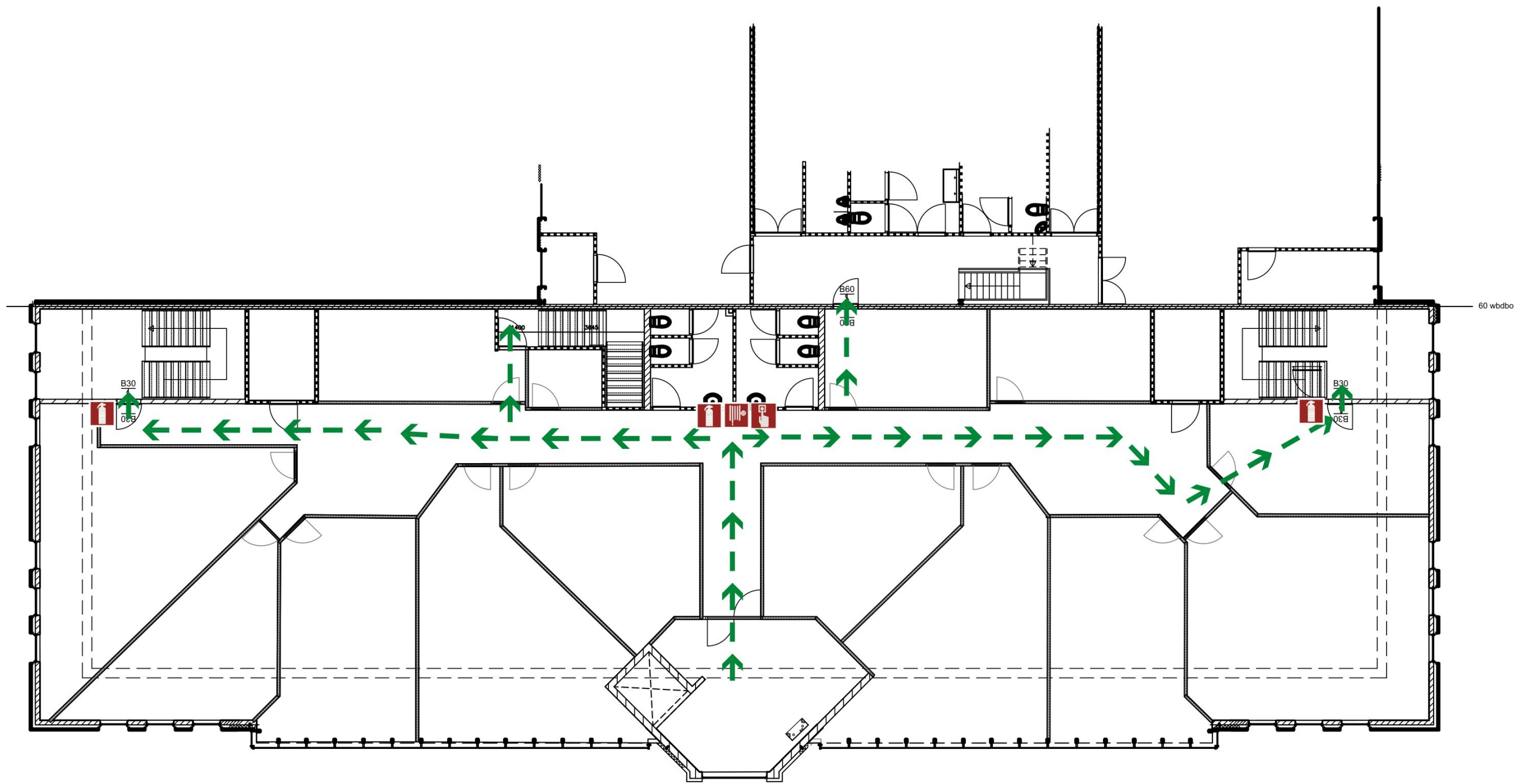
Maximaal 120 personen tegelijk aanwezig
Maximaal 230 personen tegelijk aanwezig

Drawing and layout according to indication without guarantee, please check latest drawing date and dimensions at site.

Bellweg 2 Nieuwe situatie BG + BW
4104BJ Culemborg





	<i>datum:</i> 20-11-2025	<i>verd.:</i> BG
	<i>gewijzigd:</i>	<i>tek.:</i> PLG002BW
	<i>versie:</i> A	<i>formaat:</i> landscape A3
	<i>schaal:</i> 1:150	<i>tek.:</i>

This drawing is property of Being Spaces Copyright is reserved and the drawing is issued on the condition.



1e verdieping

RENVOOI:

-  brandslanghaspel
-  handbrandblusser
-  handbrandmelder
-  vluchtroute


Vloerbezetting
Pandbezetting

Maximaal 80 personen tegelijk aanwezig
Maximaal 230 personen tegelijk aanwezig

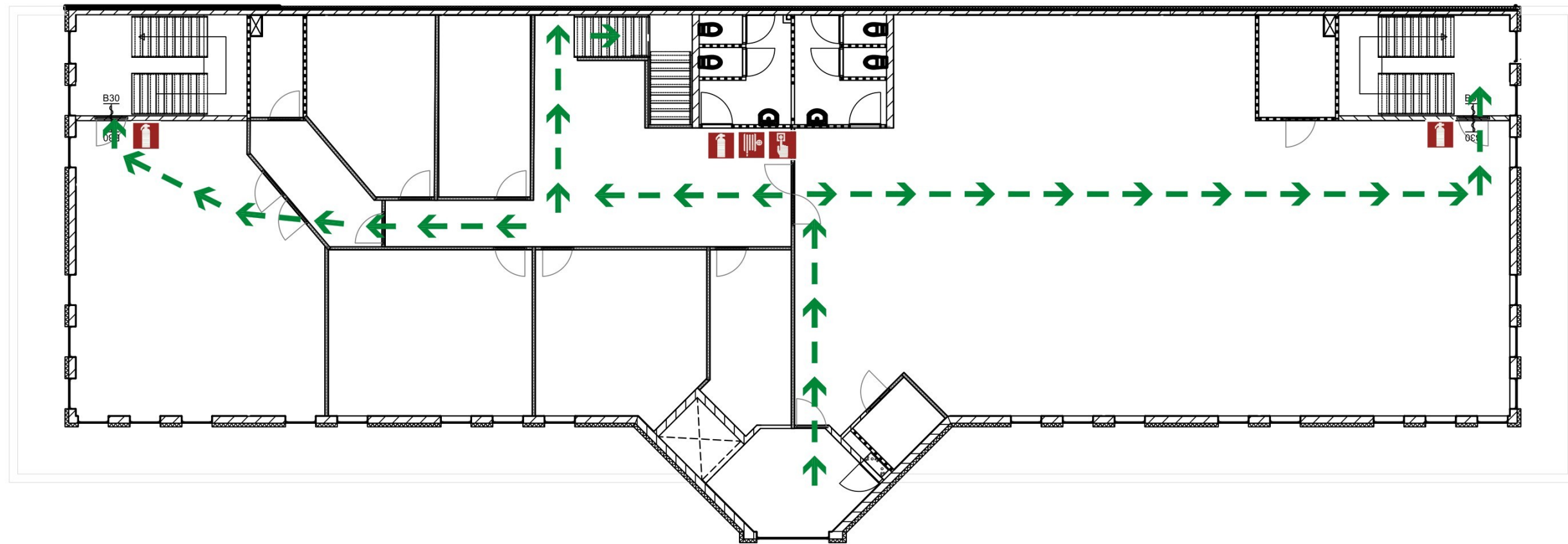
Drawing and layout according to indication without guarantee, please check latest drawing date and dimensions at site.

Bellweg 2
4104BJ Culemborg

Nieuwe situatie 1e VD + BW





	<i>datum:</i> 20-11-2025	<i>verd.:</i> 1e
	<i>gewijzigd:</i>	<i>tek.:</i> PLG102BW
	<i>versie:</i> A	<i>formaat:</i> landscape A3
	<i>schaal:</i> 1:150	<i>tek.:</i>

This drawing is property of Being Spaces Copyright is reserved and the drawing is issued on the condition.



2e verdieping

RENVOOI:

-  brandslanghaspel
-  handbrandblusser
-  handbrandmelder
-  vluchtroute

Vloerbezetting
Pandbezetting

Maximaal 50 personen tegelijk aanwezig
Maximaal 230 personen tegelijk aanwezig

Drawing and layout according to indication without guarantee, please check latest drawing date and dimensions at site.

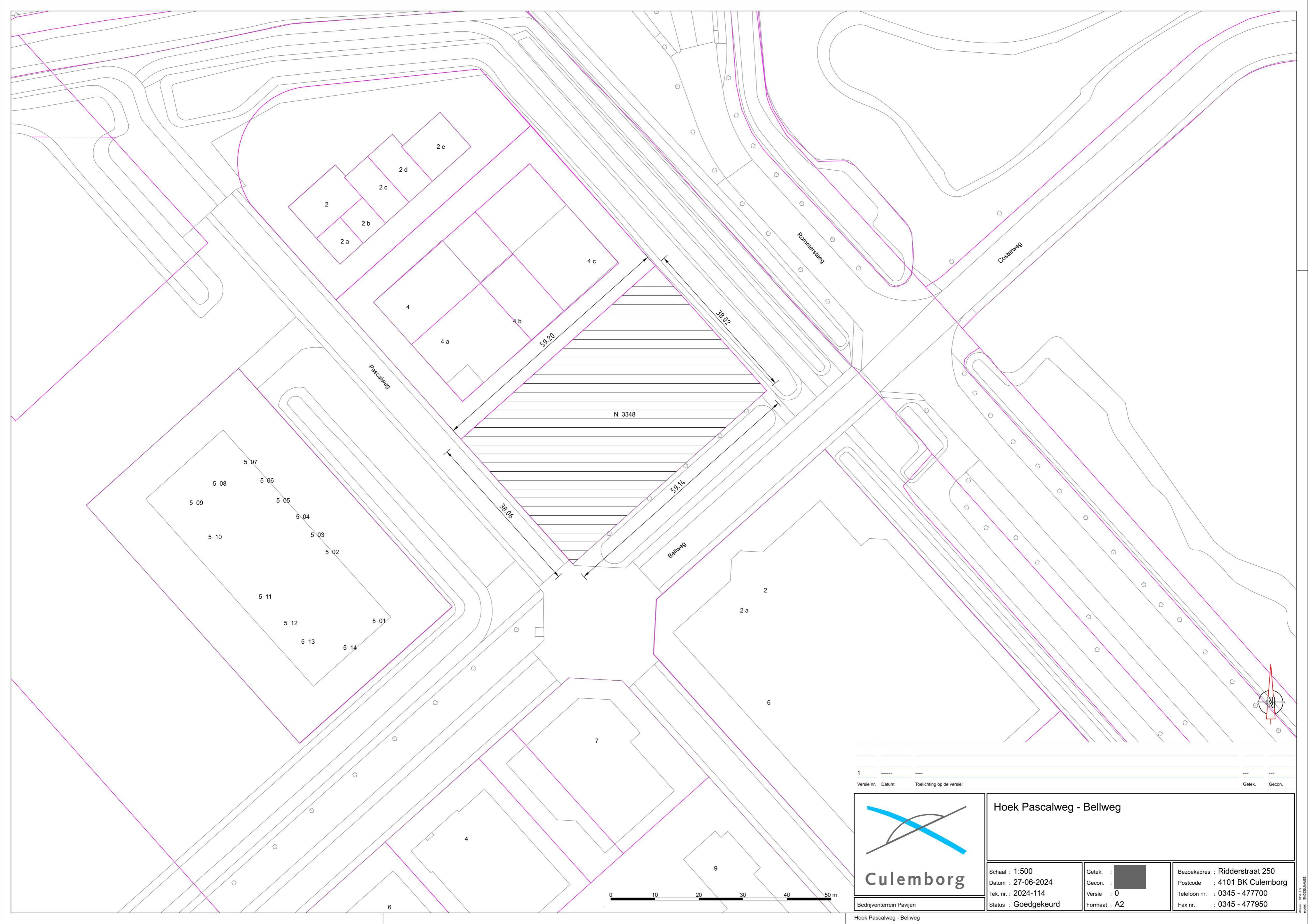
Bellweg 2
4104BJ Culemborg

Nieuwe situatie 2e VD + BW



<i>datum:</i>	20-11-2025	<i>verd.:</i>	1e
<i>gewijzigd:</i>		<i>tek.:</i>	PLG202BW
<i>versie:</i>	A	<i>formaat:</i>	landscape A3
<i>schaal:</i>	1:150	<i>tek.:</i>	

This drawing is property of Being Spaces Copyright is reserved and the drawing is issued on the condition.



1
 Versie nr. Datum: Toelichting op de versie: Getek. Gecon.

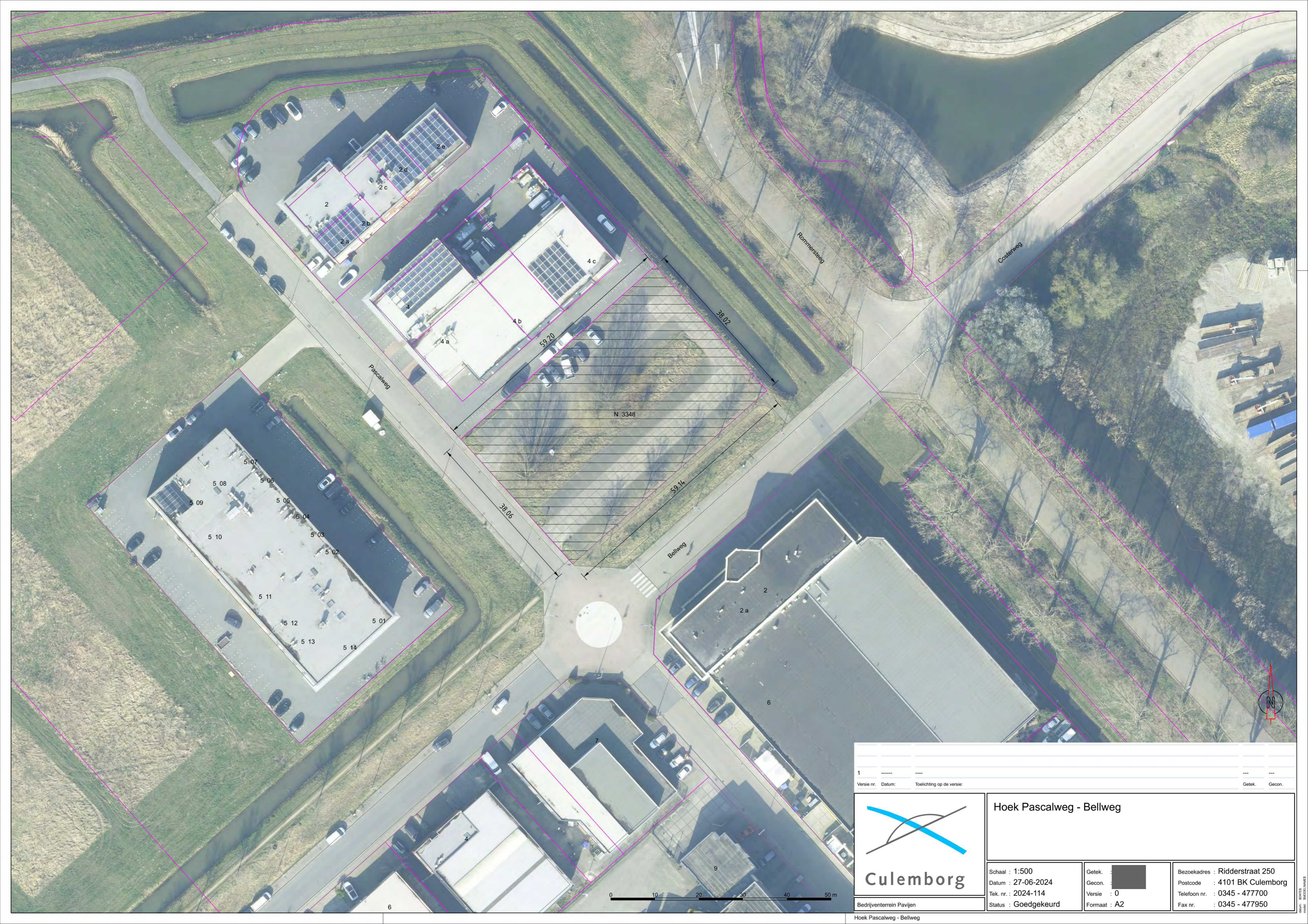


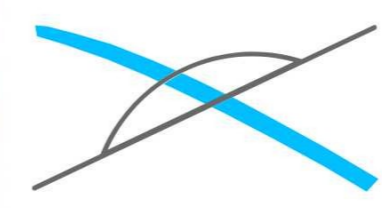


Culemborg
 Bedrijventerrein Pavijen

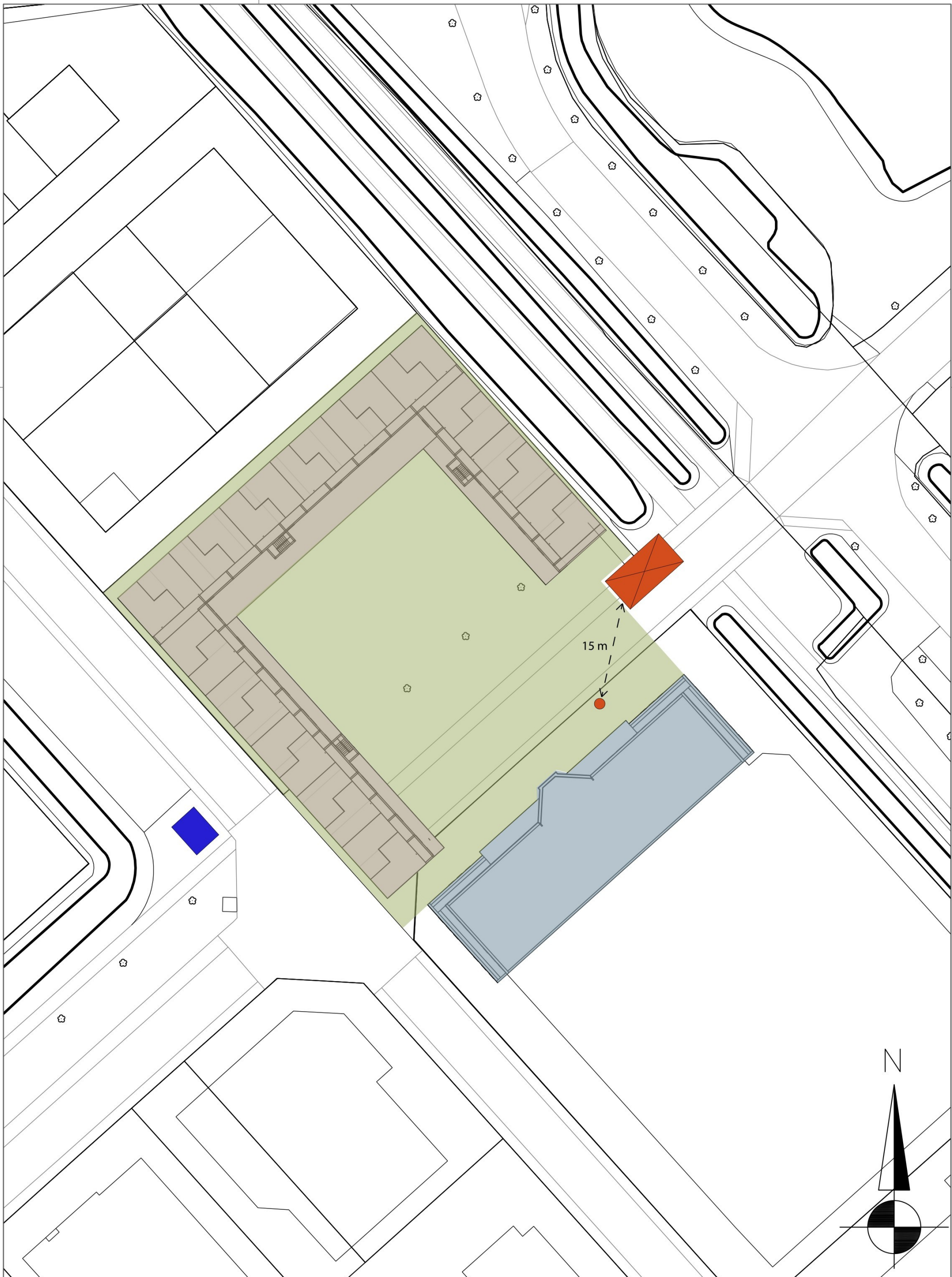
Hoek Pascalweg - Bellweg

Schaal : 1:500	Getek. : 	Bezoekadres : Ridderstraat 250
Datum : 27-06-2024	Gecon. : 	Postcode : 4101 BK Culemborg
Tek. nr. : 2024-114	Versie : 0	Telefoon nr. : 0345 - 477700
Status : Goedgekeurd	Formaat : A2	Fax nr. : 0345 - 477950





1		---	
Versie nr. :	Datum :	Toelichting op de versie :	Getek. Gecon.
		Hoek Pascalweg - Bellweg	
Schaal : 1:500	Getek. : 	Bezoekadres : Ridderstraat 250	
Datum : 27-06-2024	Gecon. : 	Postcode : 4101 BK Culemborg	
Tek. nr. : 2024-114	Versie : 0	Telefoon nr. : 0345 - 477700	
Status : Goedgekeurd	Formaat : A2	Fax nr. : 0345 - 477950	



RENVOOI

- Bestaande bebouwing
- Wonen
- Perceel
- Brandweer opstelplaats. Vluchtroutes volgens BB 2012.

- Brandkraan
- Transformatorhuisje

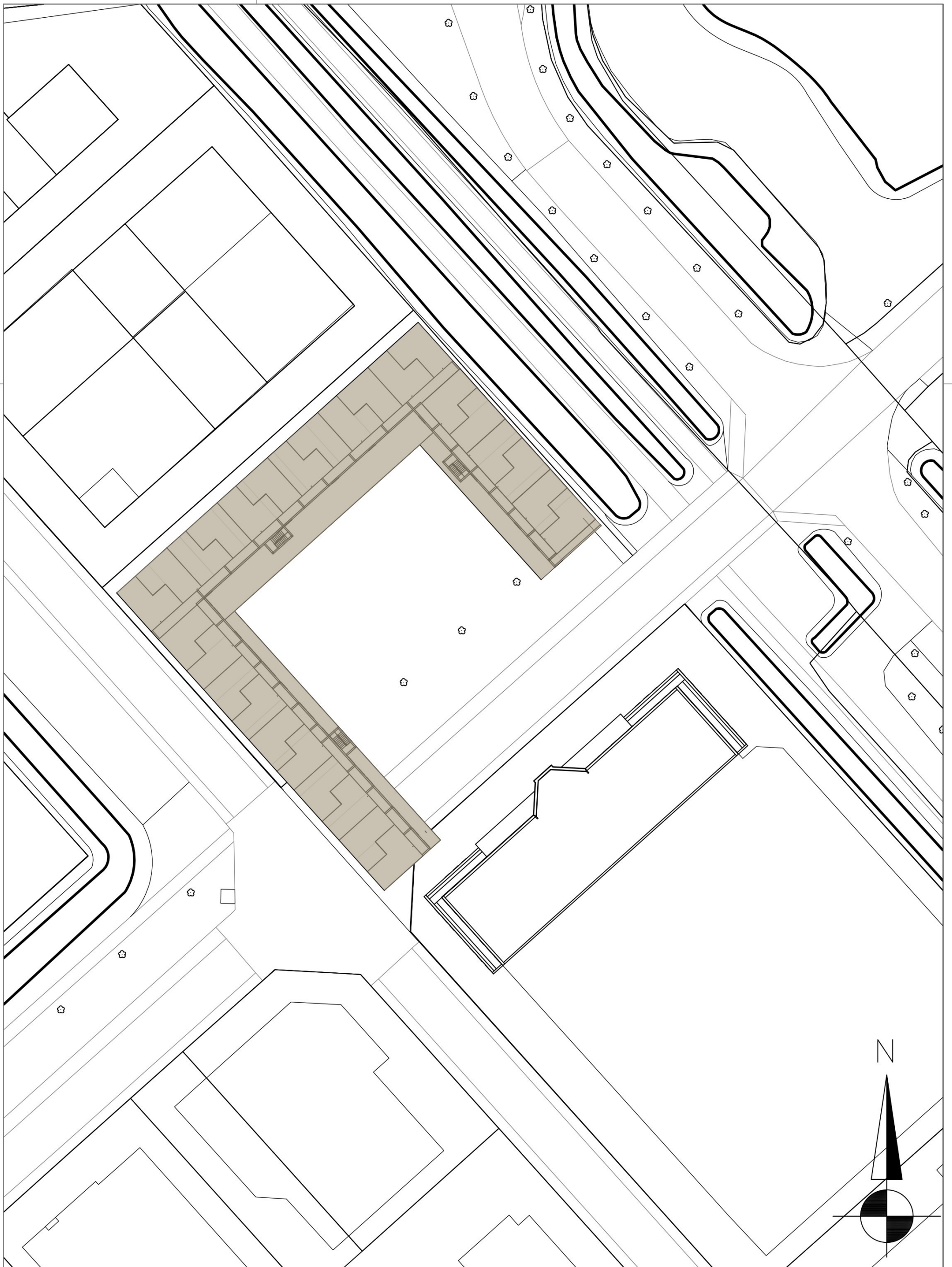
Drawing and layout according to indication without guarantee, please check latest drawing date and dimensions at site.

Bellweg 2 **Nieuwe situatie omgeving**
 4104BJ Culemborg



<i>datum:</i>	20-11-2025	<i>verd.:</i>	
<i>gewijzigd:</i>		<i>tek.:</i>	NST001
<i>versie:</i>	A	<i>formaat:</i>	A3
<i>schaal:</i>	1: 500	<i>tek.:</i>	

This drawing is property of Being Spaces Copyright is reserved and the drawing is issued on the condition.



RENVOOI

- 3 lagen tijdelijke woonunits bestaande uit:
 - Begane grond 21x 4p & 2x 2p
 - 1e verdieping 28x 2 p
 - 2e verdieping 28x 2p

Zie tekeningen 'WU2P' en 'WU4P' voor exacte afmetingen van de tijdelijke woonunits.

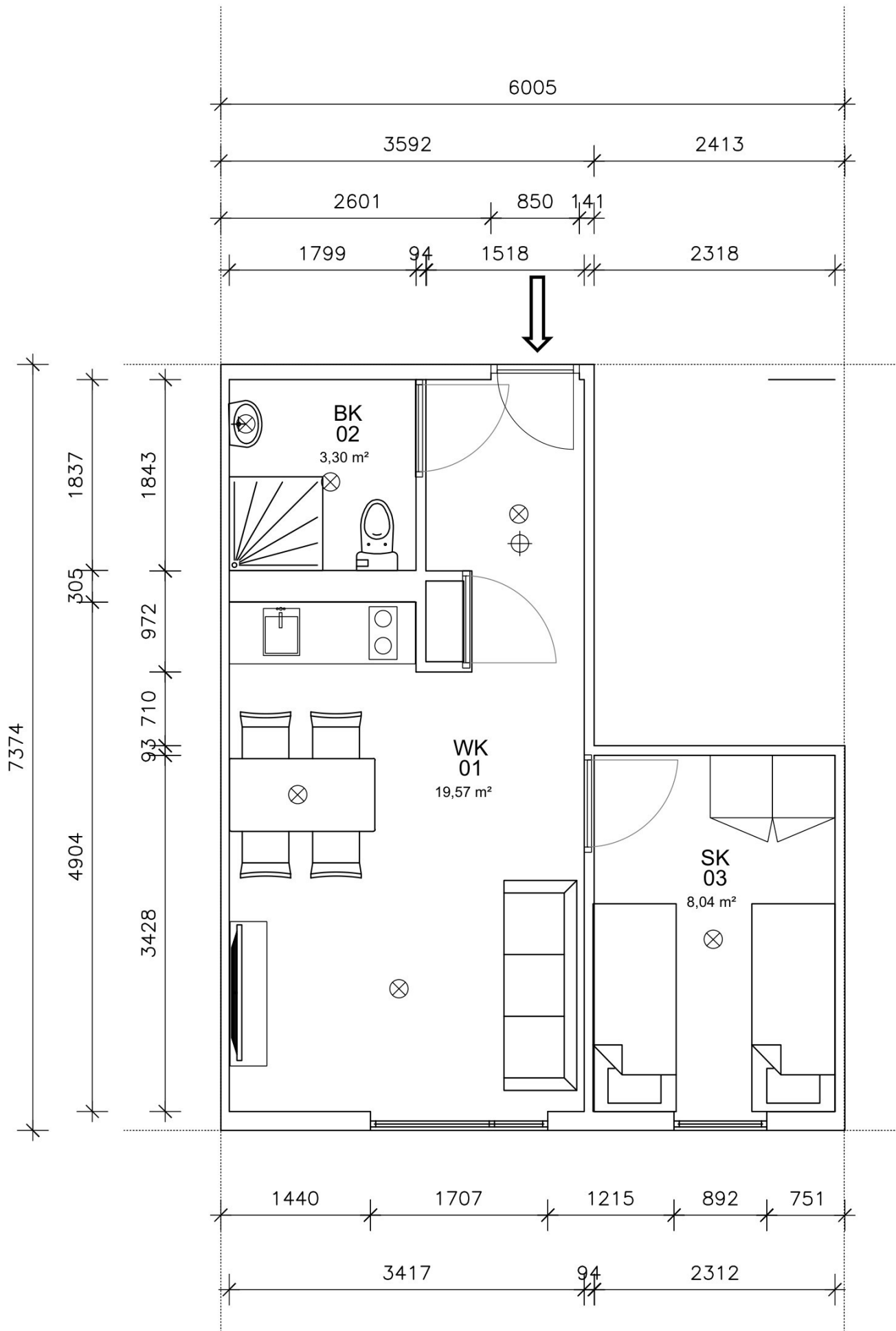
Drawing and layout according to indication without guarantee, please check latest drawing date and dimensions at site.

Bellweg 2 Nieuwe situatie omgeving
 4104BJ Culemborg



datum:	20-11-2025	verd.:	
gewijzigd:		tek.:	NST001
versie:	A	formaat:	A3
schaal:	1: 500	tek.:	

This drawing is property of Being Spaces Copyright is reserved and the drawing is issued on the condition.



	GBO.	32,35 ²
	BVO. opp.	35,41 ²
	Bruto inhoud.	106,23 ³

- ⊕ ruimte voorzien van automatische melder
- ⊙ Lichtpunt

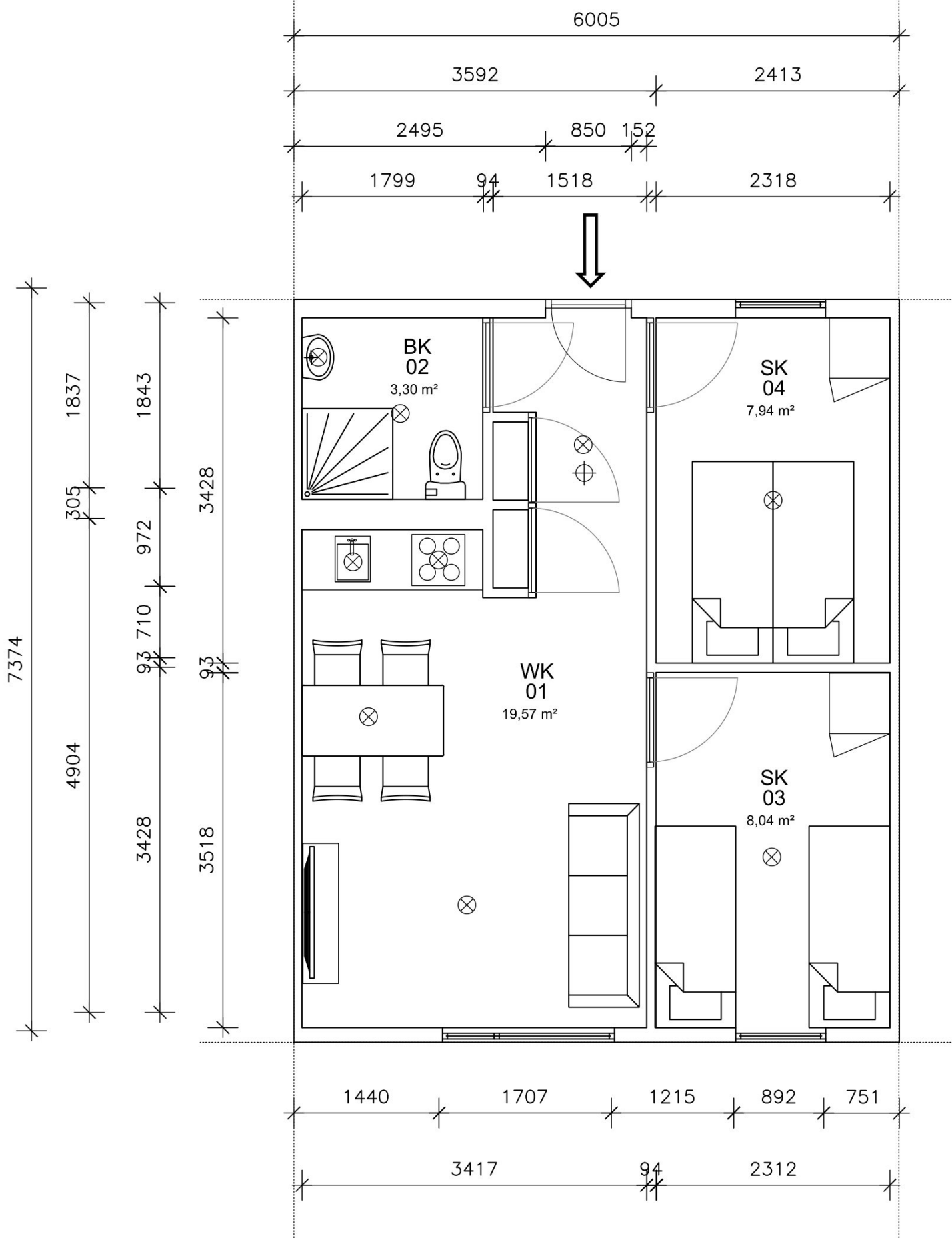
Woonunit voldoet aan BB 2012 op gebied van W/E en BW eisen

Drawing and layout according to indication without guarantee, please check latest drawing date and dimensions at site.

Bellweg 2 Woonunit 2 pers.
4104BJ Culemborg

	datum:	20-11-2025	verd.:	
	gewijzigd:		tek.:	WU2P
	versie:	A	formaat:	portrait A3
	schaal:	1:50	tek.:	

This drawing is property of Being Spaces Copyright is reserved and the drawing is issued on the condition.



	GBO.	41,07 ²
	BVO. opp.	44,94 ²
	Bruto inhoud.	134,82 ³

- ⊕ ruimte voorzien van automatische melder
- ⊙ Lichtpunt

Woonunit voldoet aan BB 2012 op gebied van W/E en BW eisen

Drawing and layout according to indication without guarantee, please check latest drawing date and dimensions at site.

Bellweg 2 Woonunit 4 pers.
4041BJ Culemborg

	datum:	20-11-2025	verd.:	
	gewijzigd:		tek.:	WJ4P
	versie:	A	formaat:	portrait A3
	schaal:	1:50	tek.:	

This drawing is property of Being Spaces Copyright is reserved and the drawing is issued on the condition.