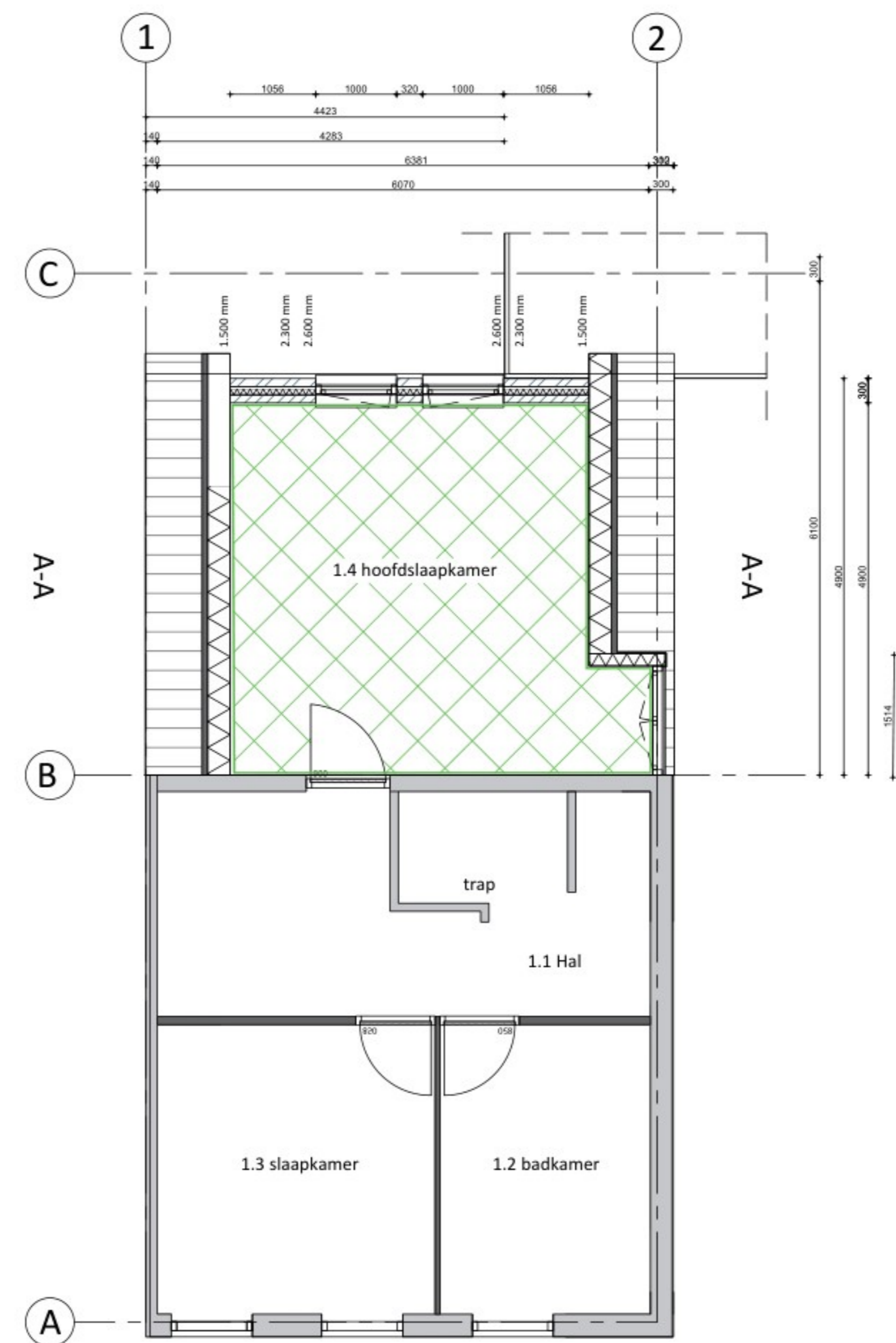


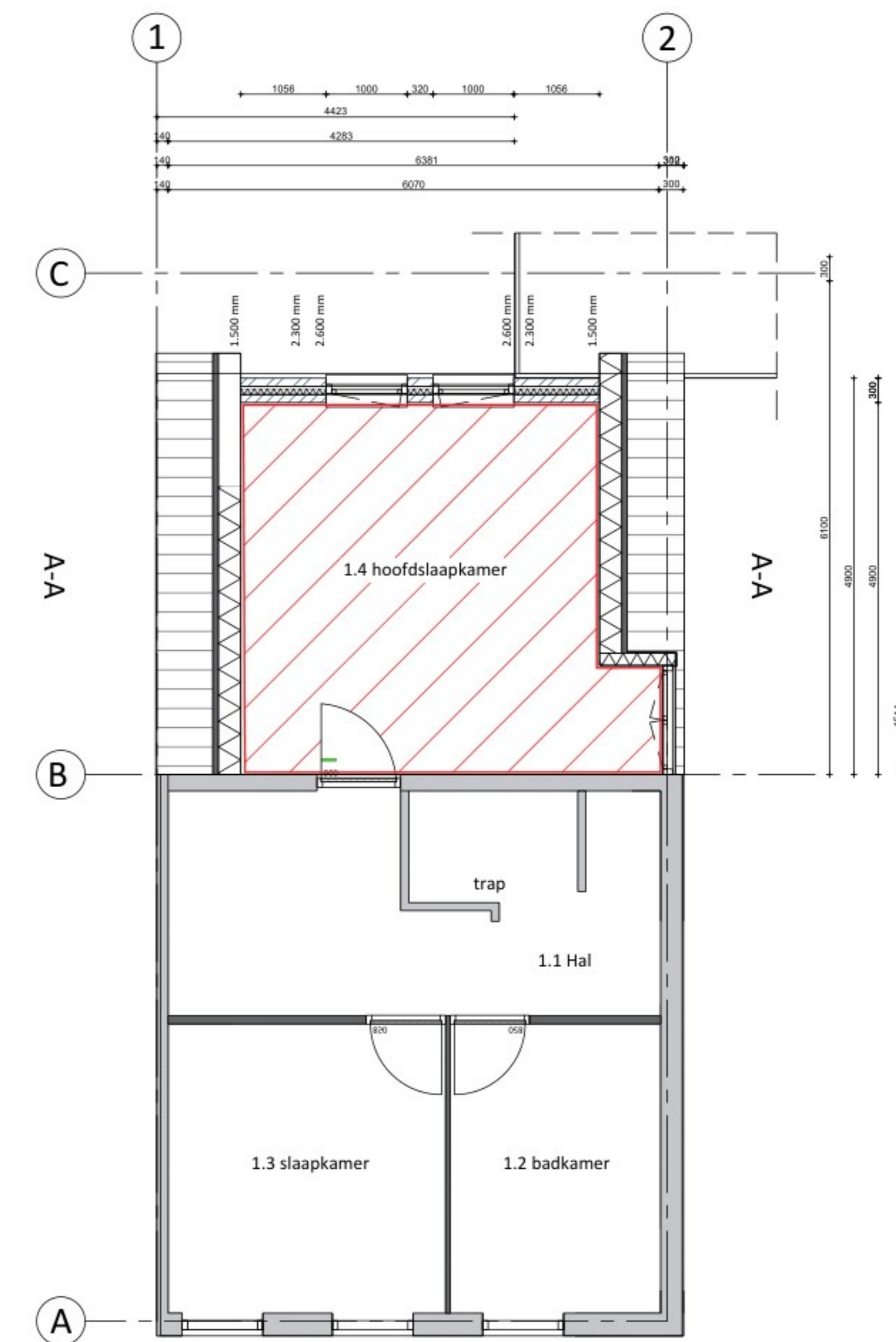
Gebruiksoppervlakte

Schaal 1:100



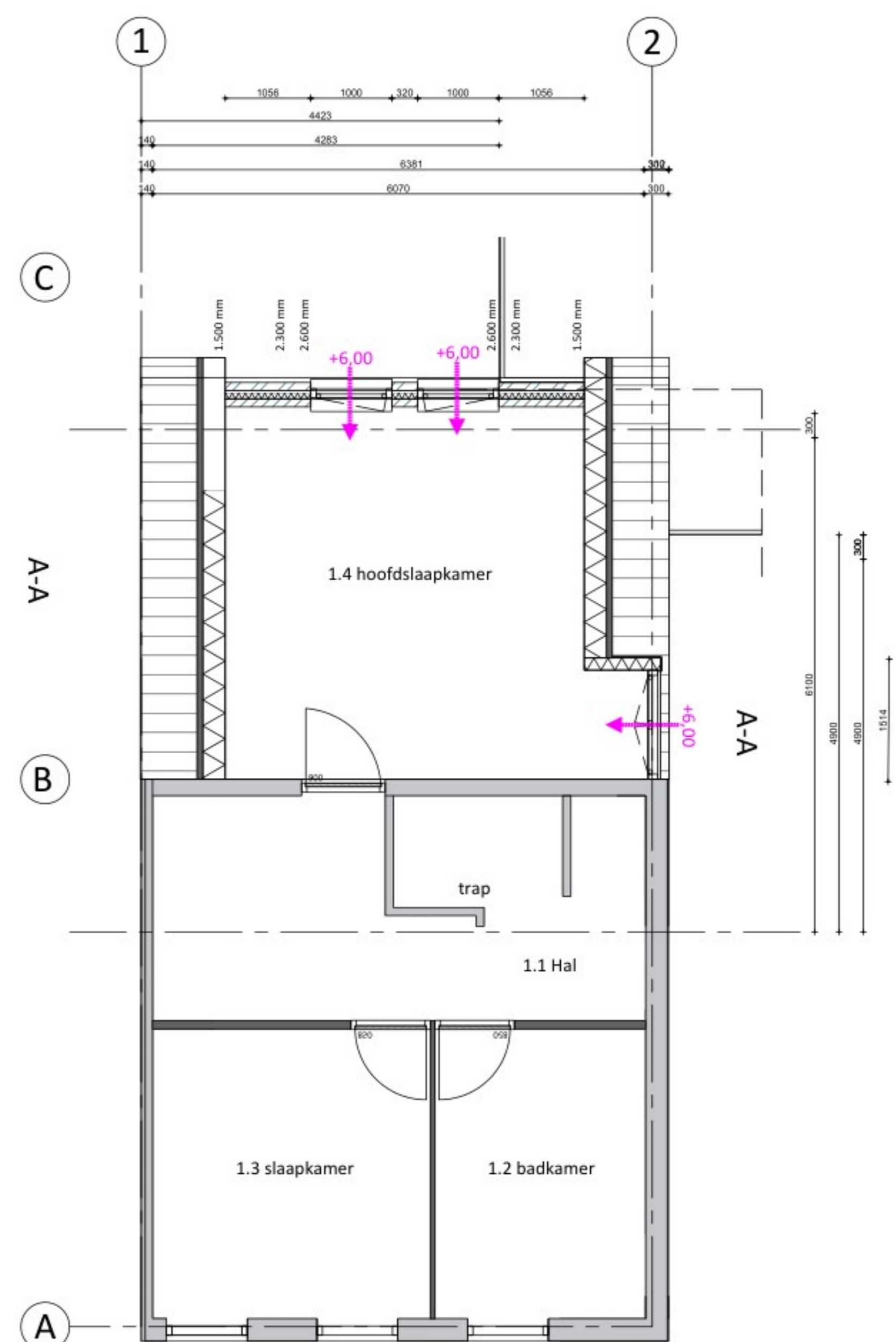
Verblijfsruimte

Schaal 1:100



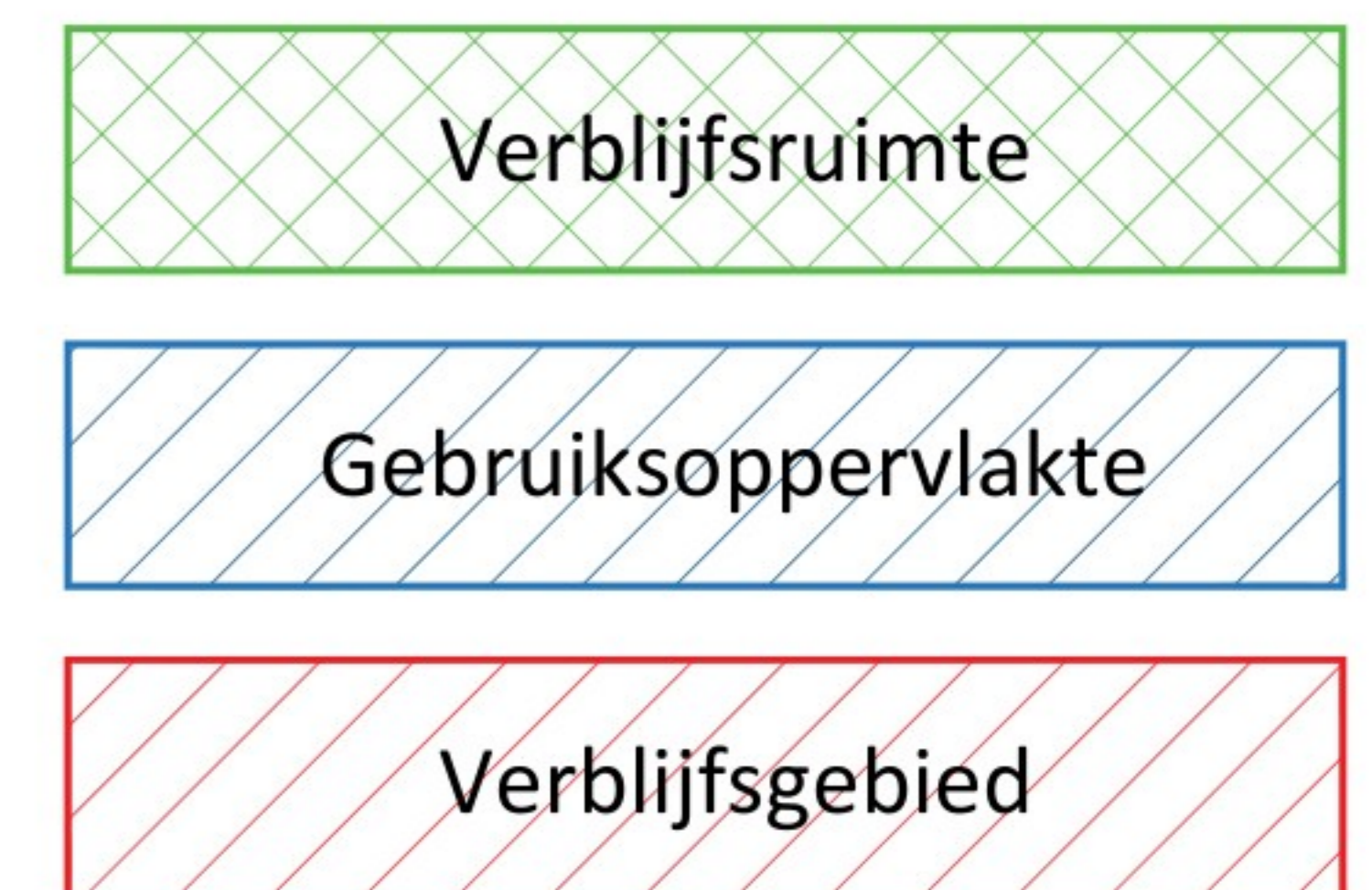
Verblijfsgebied

Schaal 1:100



Ventilatie

Schaal 1:100



Renvooi

| | | |
|--------------------------------------------|-----|----------------------------------|
| metselwerk | hwa | Hemelwater |
| constructieve wand | rm | Rookmelder |
| isolatie | sl | Stalen latei |
| i.h.w.g. beton | bl | Betonlatei |
| aangrenzende bebouwing | vv | Verdelers vloerverwarming |
| Cementdekvloer | wm | Wasmachine |
| Separatiewand | dr | Droger |
| | v. | Ducoton 10 'ZR' cap. 8,6 dm/s |
| inb. mv | | |
| afz. mv | | |
| Rookmelder | | |
| Ducoton 10ZR ventilatierooster (10,3 dm/s) | | |

| | |
|-----------|------------|
| wc Ø110mm | cv Ø40mm |
| f Ø40mm | g Ø75mm |
| d Ø50mm | vt Ø75mm |
| wt Ø50mm | stl Ø110mm |
| Wp Ø50mm | HWA Ø70mm |

| | | |
|------------------|--------------------------------------------|-------------------|
| Project | : Verbouwing 'Jan Vermeerstraat 15' Deurne | |
| Onderdeel | : Ruimtestaten & technische plattegronden | |
| | Fase : | DEFINITIEF |
| | Schaal : | 1:50 |
| | Formaat : | A0 |
| | Getekend : | DvdE |
| | Datum : | 1-10-2025 |
| | Projectnummer : | 25.029 |
| | Bladnummer : | 3.03 |