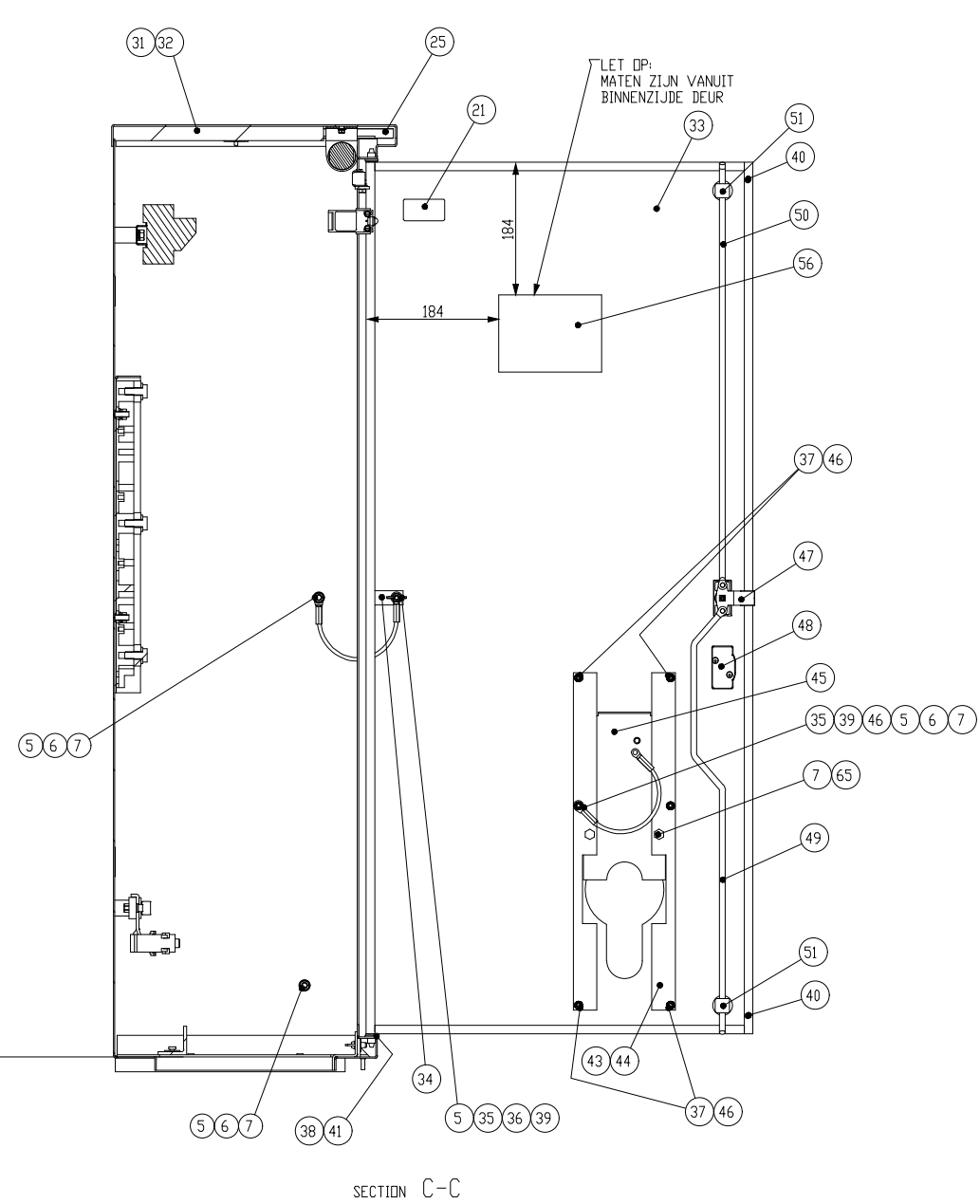
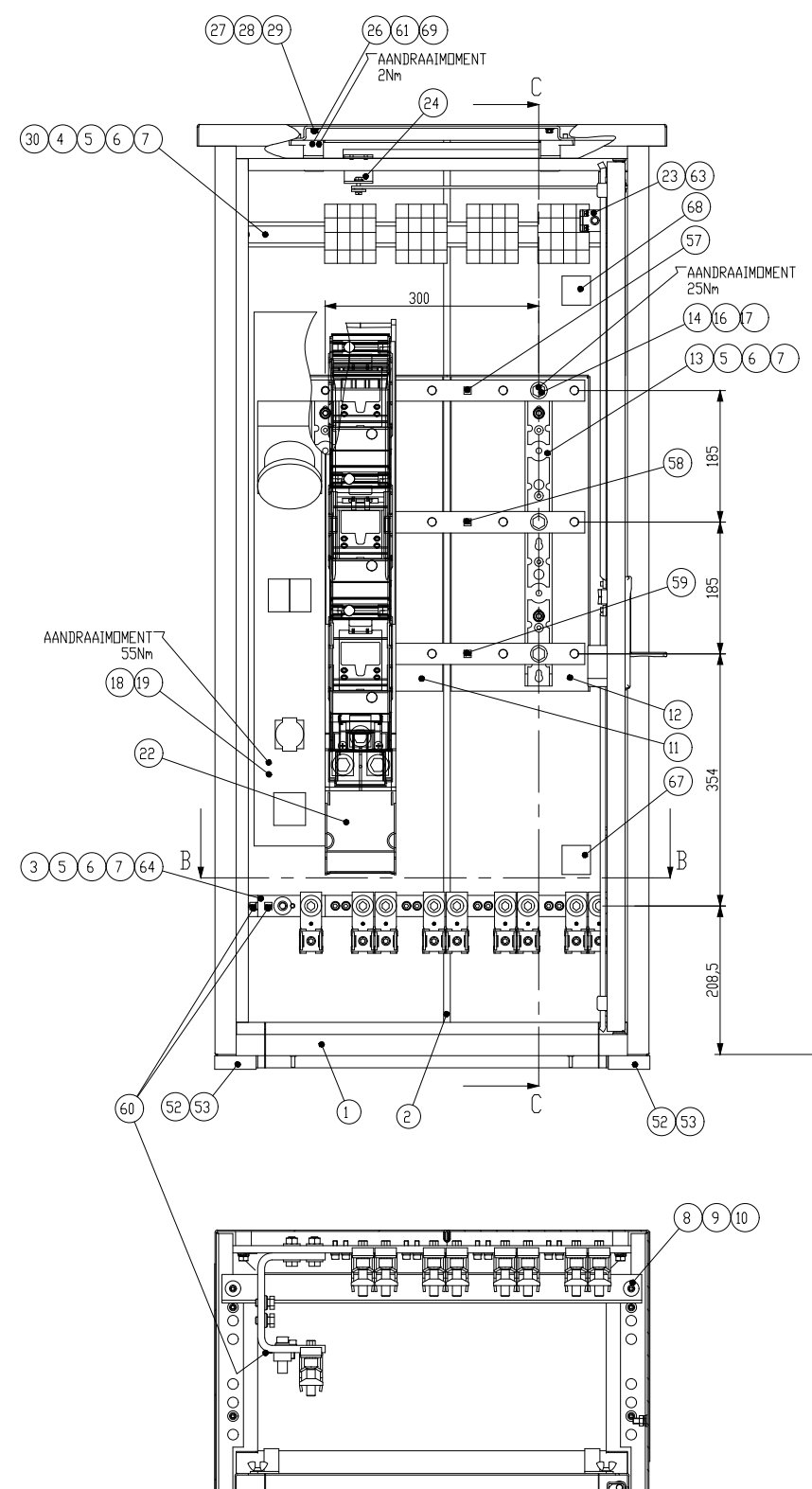
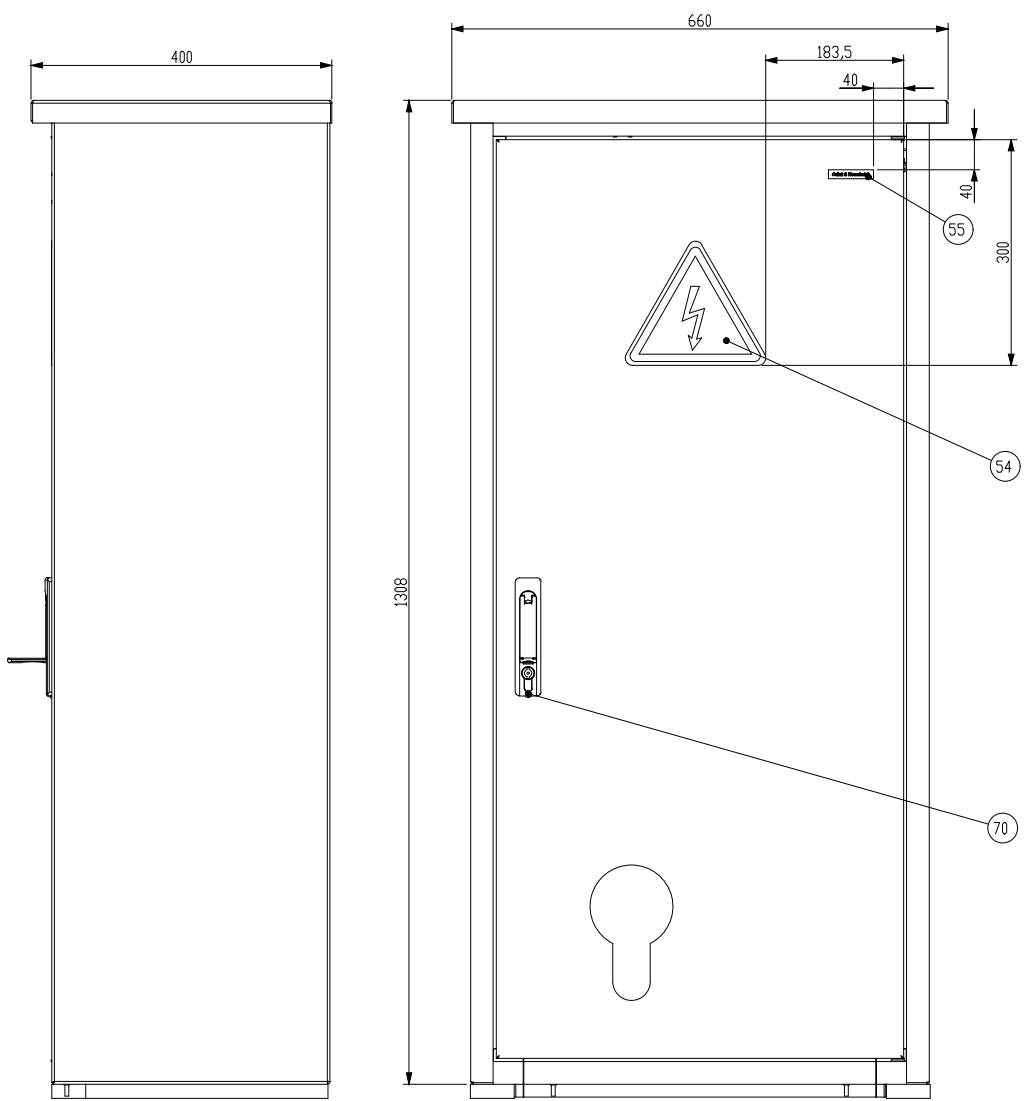


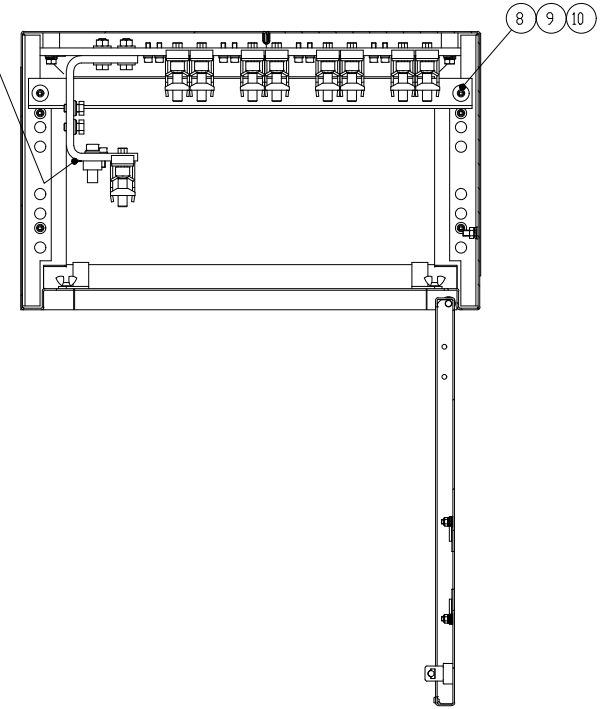
3D Model is the Master Document of Record
 Part that conform to 3D Model shall conform to the IEC 60000-13
 Article of Master of Part conform to the IEC 60000-13
 IEC 60000-13:2009
 IEC 60000-13:2009
 IEC 60000-13:2009

ABB PROPRIETARY AND CONFIDENTIAL INFORMATION
 The information contained in this document is to be kept strictly confidential.
 Any unauthorized disclosure of this information is strictly prohibited.
 ABB reserves all rights regarding intellectual property rights.
 Copyright © 2018 ABB. All rights reserved.

OPENBAAR



SECTION B-B



DRAWING FILE	845693	MODEL FILE	845693	ABB		
DATE MODIFIED	29-Mar-19 02:14:27 PM	DESIGNED BY	AVDH			
Calculated for:	CNR	APPROVED BY	---	TITLE		
VOLUME	0,000 mm ³	Critical to Quality Characteristic		RVS 30 cable distr. cabinet 4W+PL		
MASS	0,000 kg	MATERIAL SPECIFICATION	---	UNITS	LOCAL TITLE	
UNLESS OTHERWISE SPECIFIED	---	FINISH SPECIFICATION	---	mm	RVS 30 kast 4 LS richtingen NH2+OVL	
Linear and Geometry Tolerances:	---	MATERIAL DESCRIPTION	---	SIZE	ROOT NUMBER	REV
Angular Tolerances:	---	FINISH DESCRIPTION	---	A1	---	1
ISO 2768-mk	---	---	---	SCALE	PRODUCT LINE	RELEASE STATE
ISO 2768-c	---	---	---	1:5	---	In Work
						SHEET
						1 of 1

