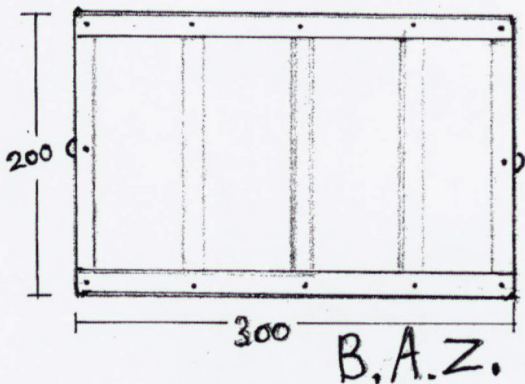
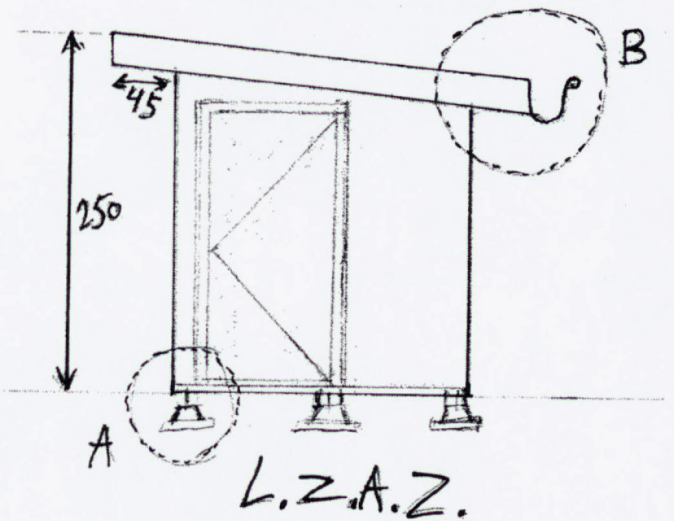
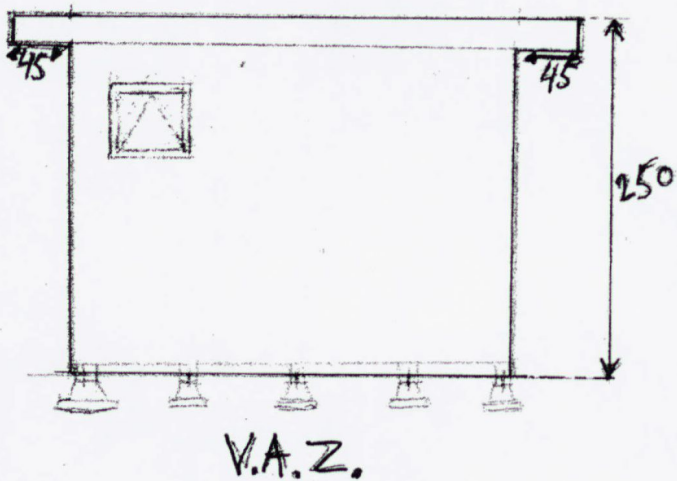
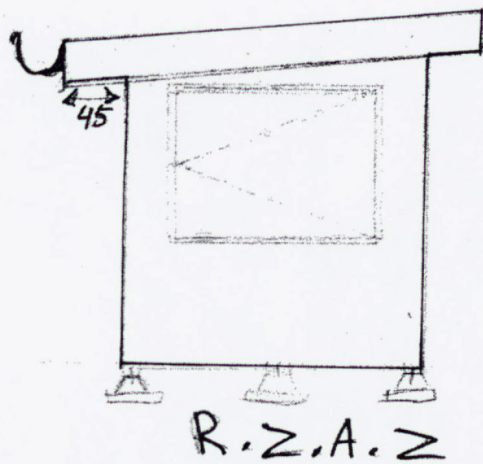
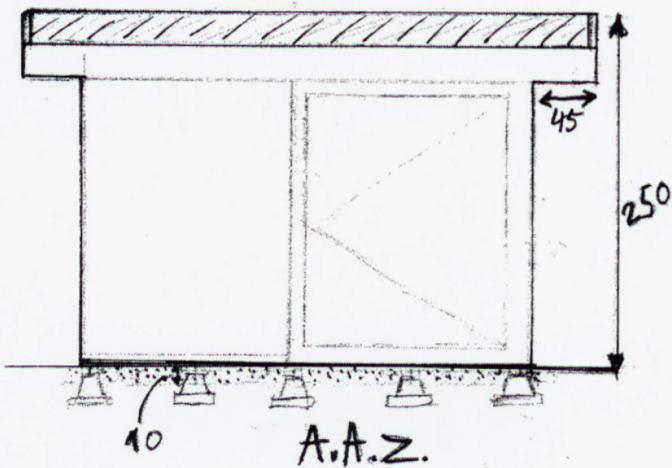
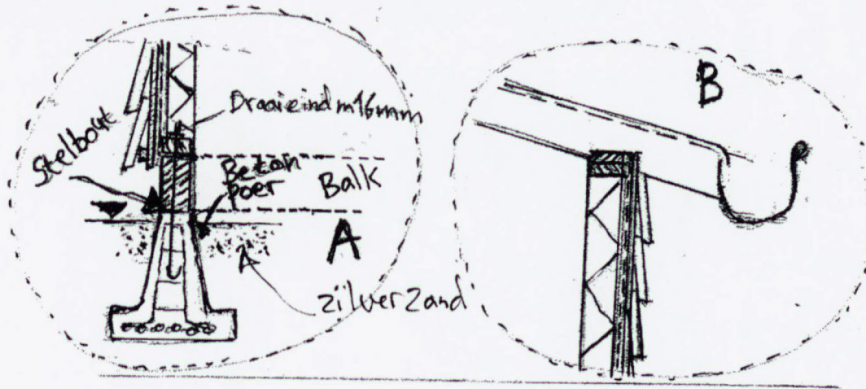


# Schuurtje bij Tuinhuisje 62



Behoort bij beschikking van  
Burgemeester en Wethouders  
van Leiden

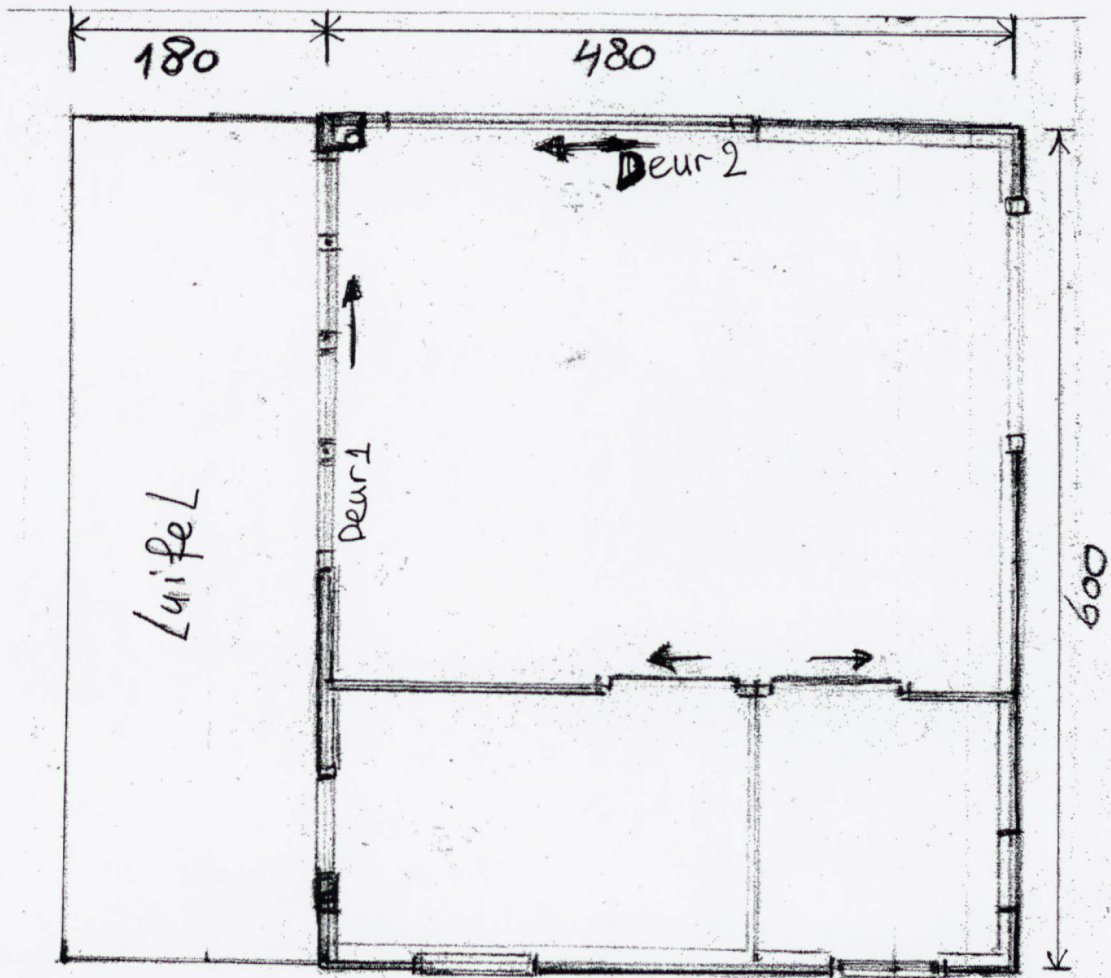
Wabo **Z/23/3487954**



p6

1:50  
Schuurtje

# Tuin huisje 62

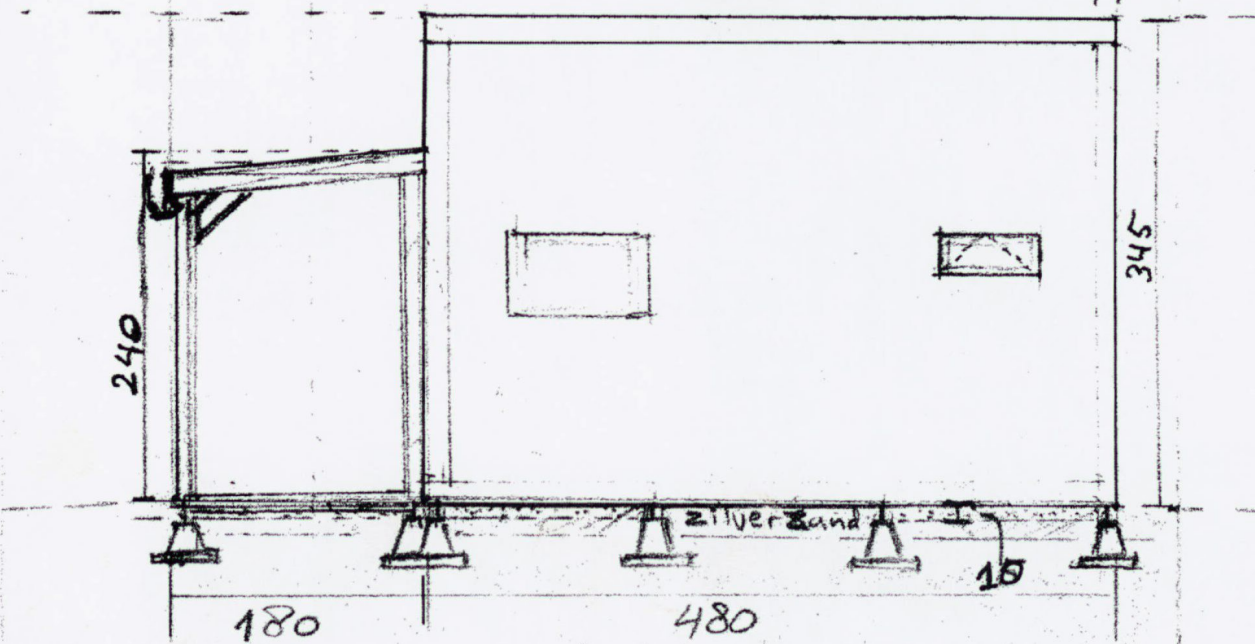


B.A.Z

[zie ook pagina 4]

V.A.Z.

15  
H



Tuin huisje 1:50

P2

# Tuinhuisje 62

## Tuinhuisje en Schuurtje (in cm) Materiaaloverzicht Wanden

- afwerking hout: planken  $2,2 \times 20 \times W$  (=breedte)
- balken:  $3,8 \times 8,9 \times L$  ( $L$  = hoogte huisje of schuur)
- boeidelen: hout planken  $1,8 \times 18,5 \times W$  (=breedte)
- Luitel:  $12 \times 12 \times 240$

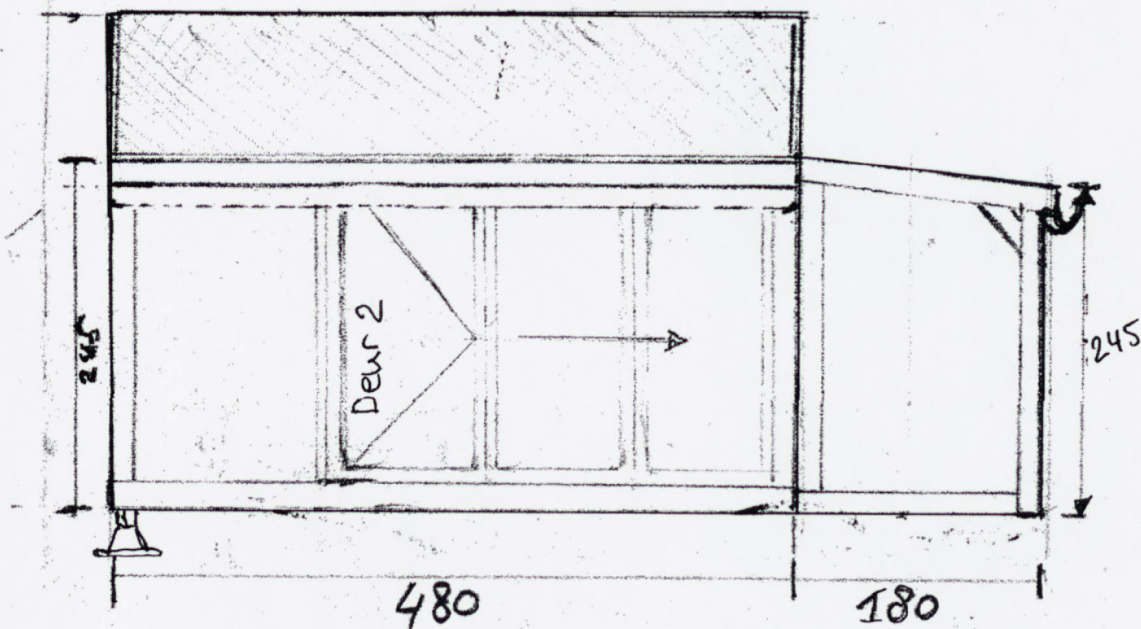
## Dak (huis en schuur) hoogte 60cm

- balken:  $6,3 \times 16,0 \times L$  ( $L$  = lange zijde dak spoor)
- hout underlayment: platen  $244 \times 122 \times 1,8$  cm (huisje of schuur)
- Dakleer: Bitumen

## Vloer

- balken:  $6,3 \times 16,0 \times L$  ( $L$  = huis of schuur  
variabel Balk raam)
- hout underlayment: platen  $244 \times 122 \times 2,1$  cm
- Fundament: Beton poeren met stel bout  $M16$  mm
- Zilverzand: zuiver 10 cm zand onder huisje/schuur

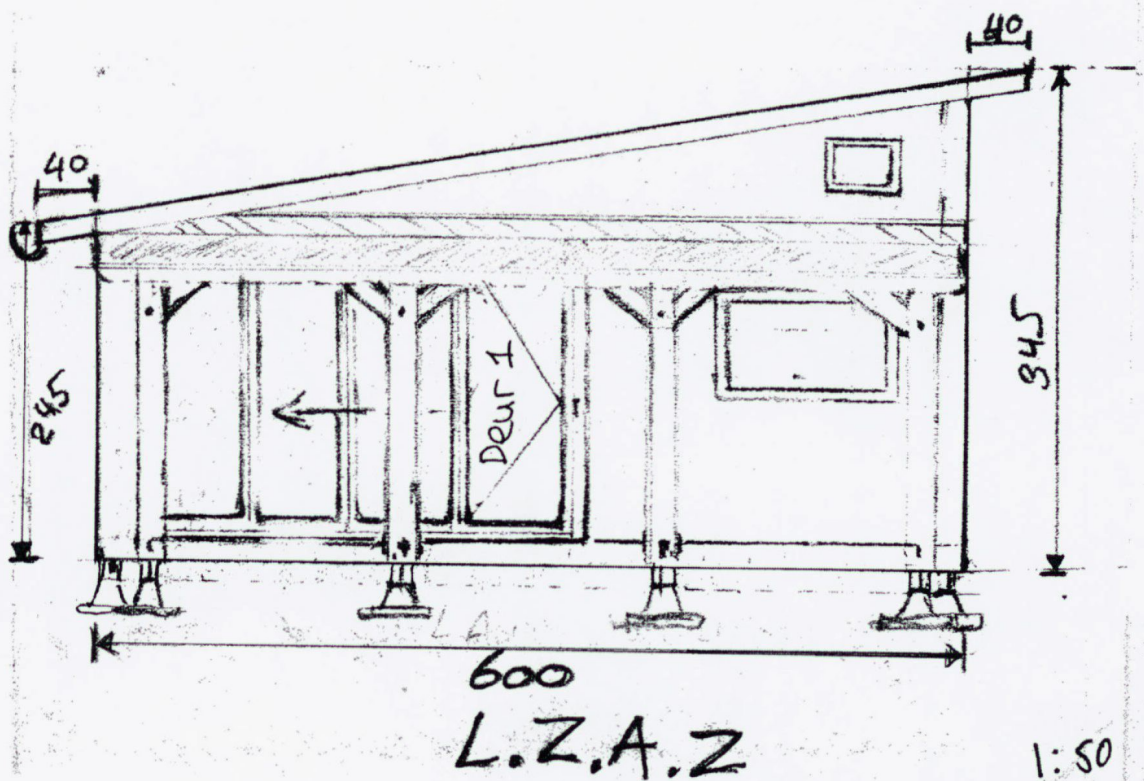
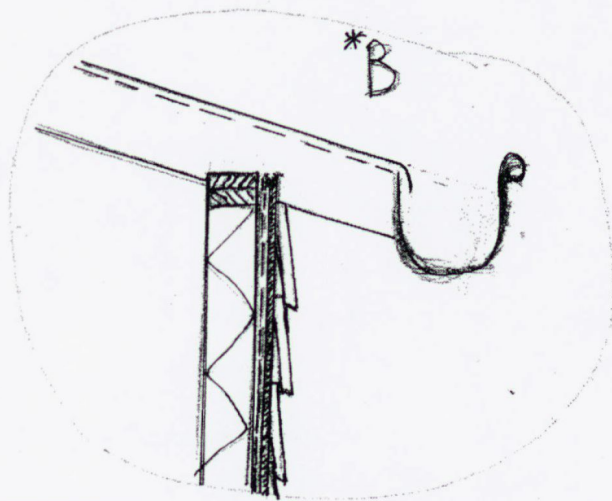
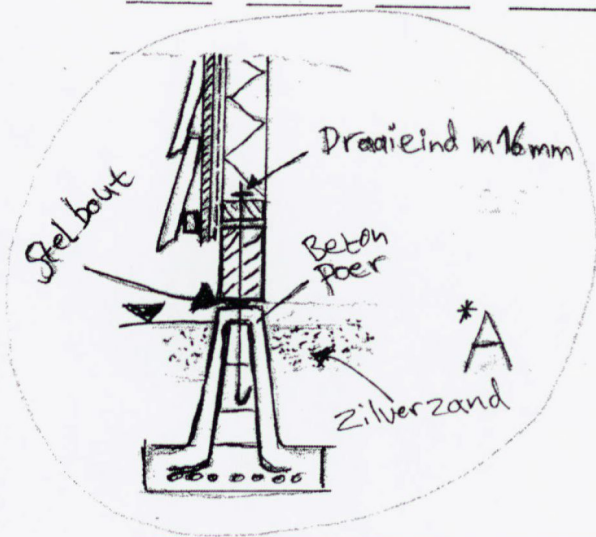
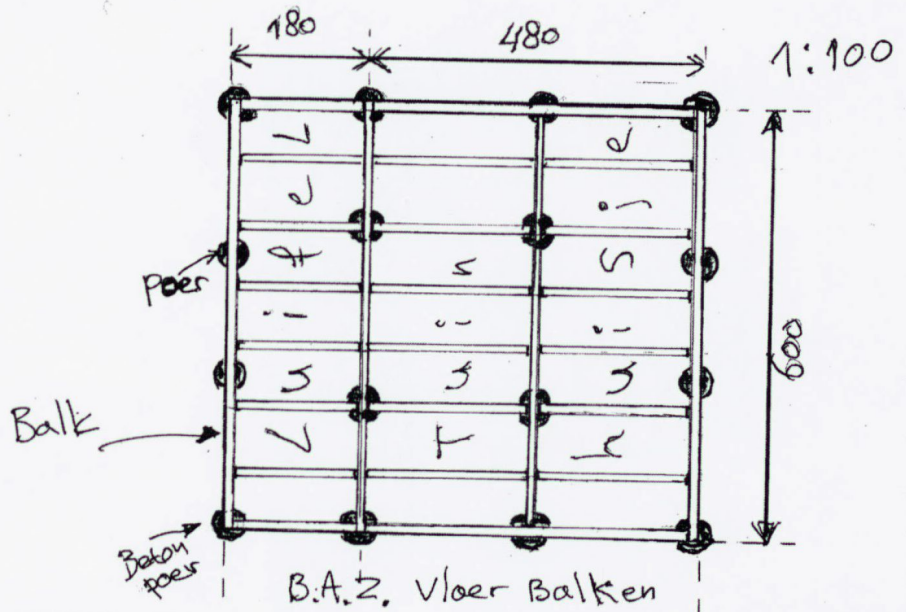
A.A.Z



1:50

P3

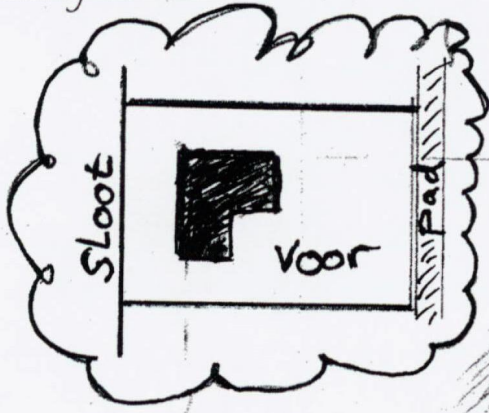
# Tuinhuisje 62



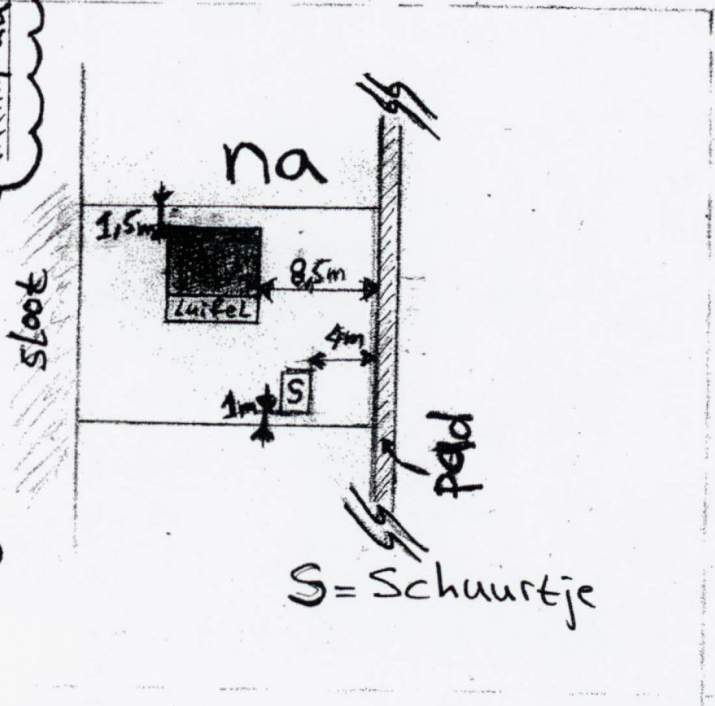
Tuinhuisje 62

Tuinhuisje 62

Situatie



1:500



R.Z.A.Z.

