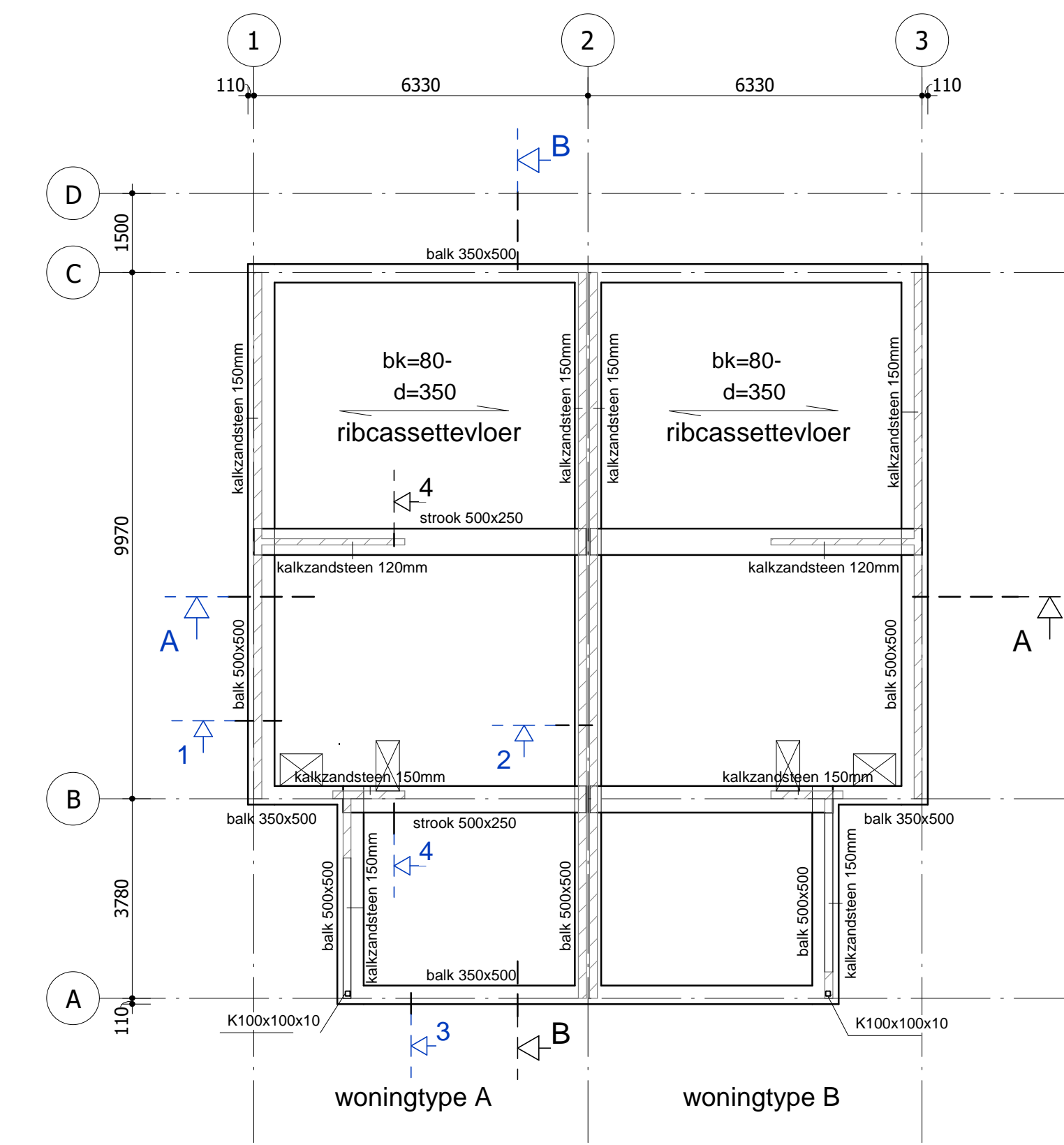
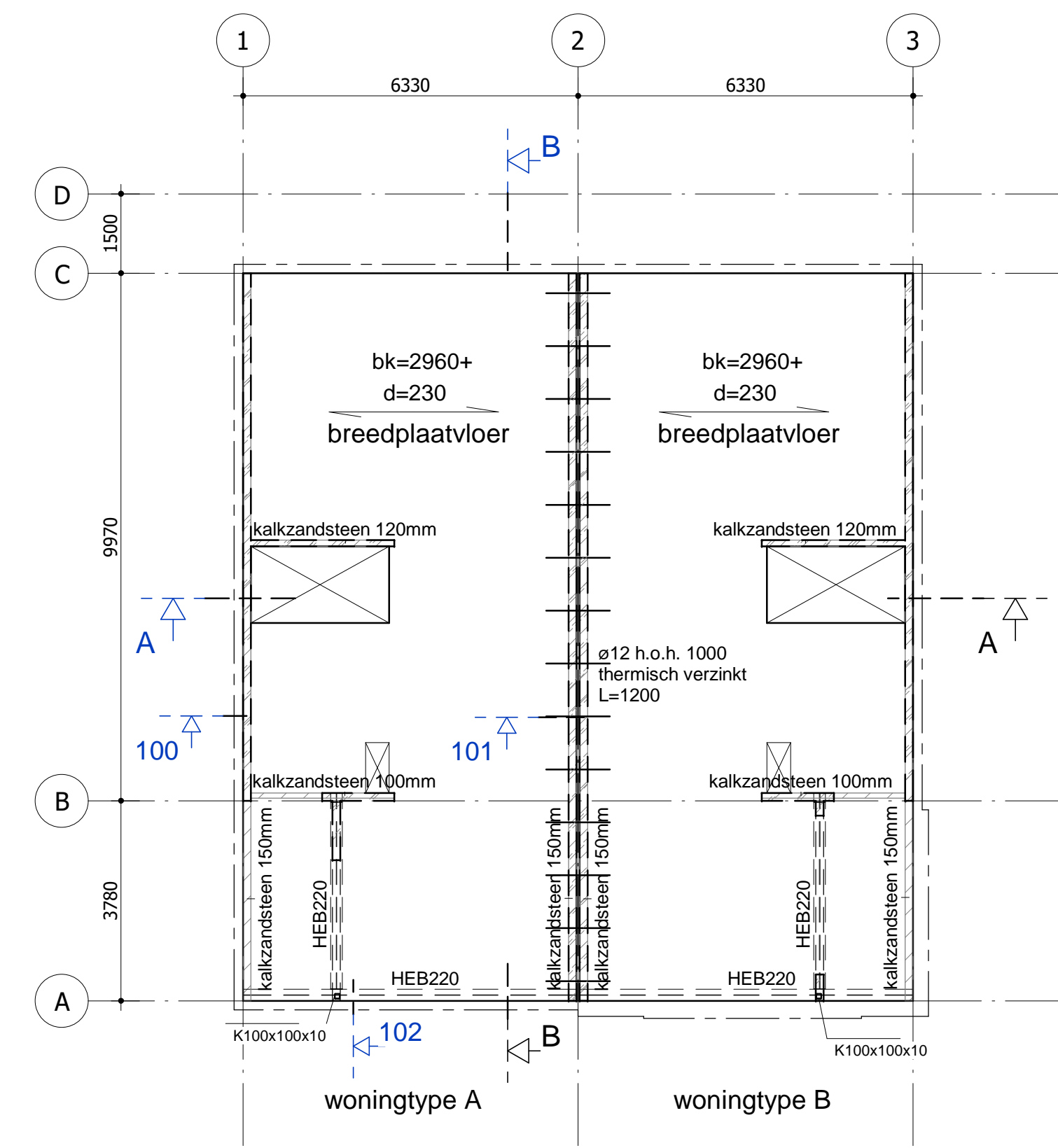


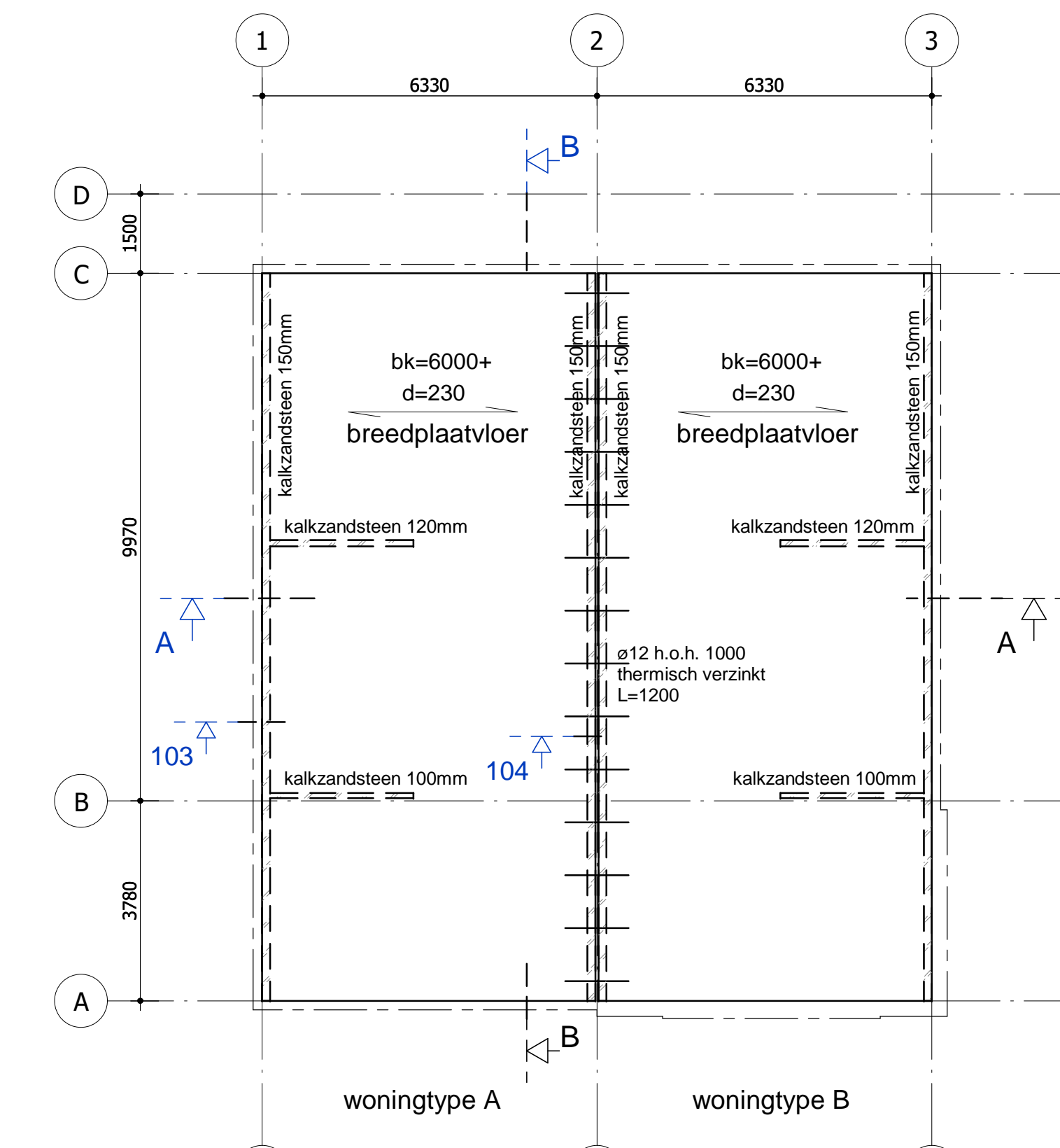
3D totaal woningtype A+B



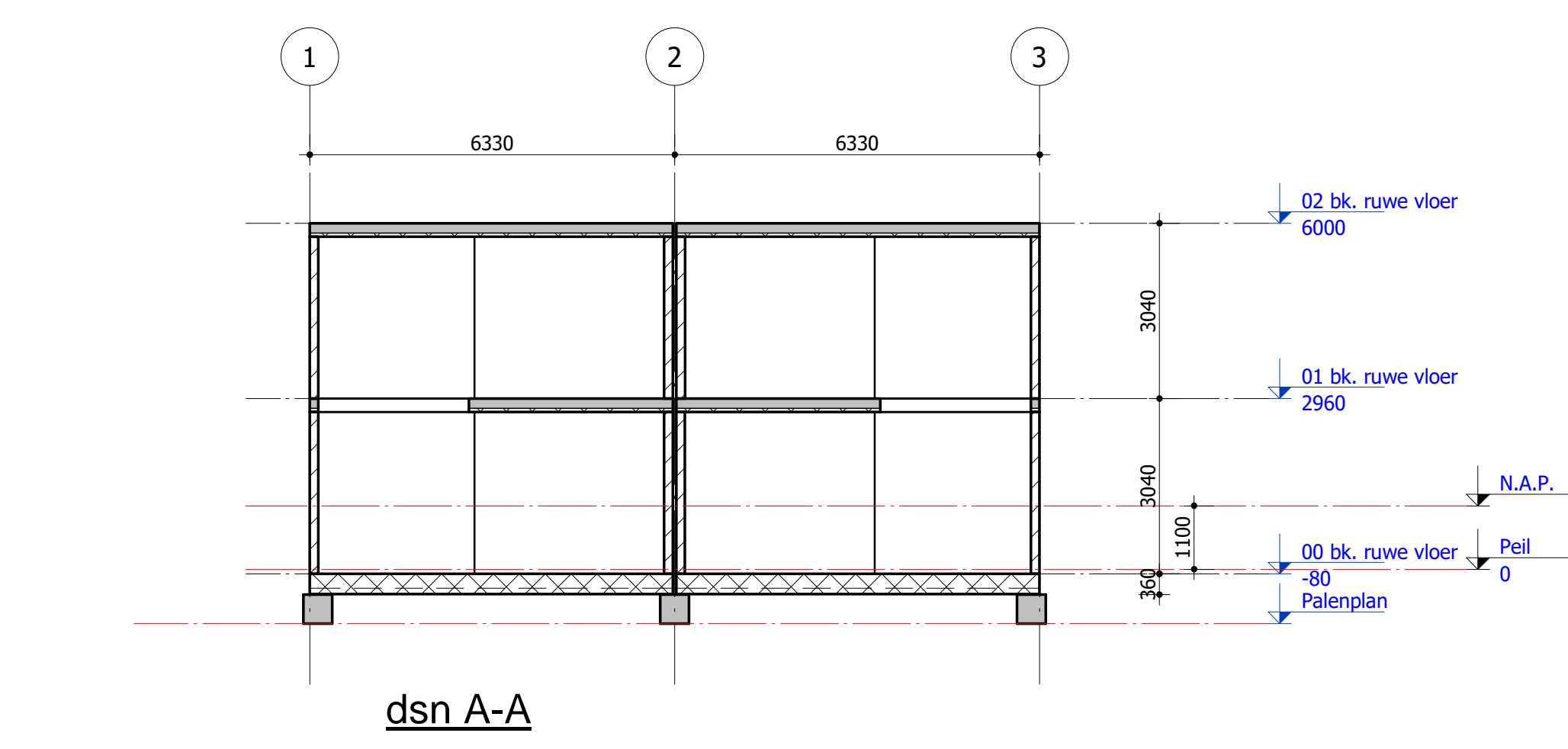
fundering / bg vloer



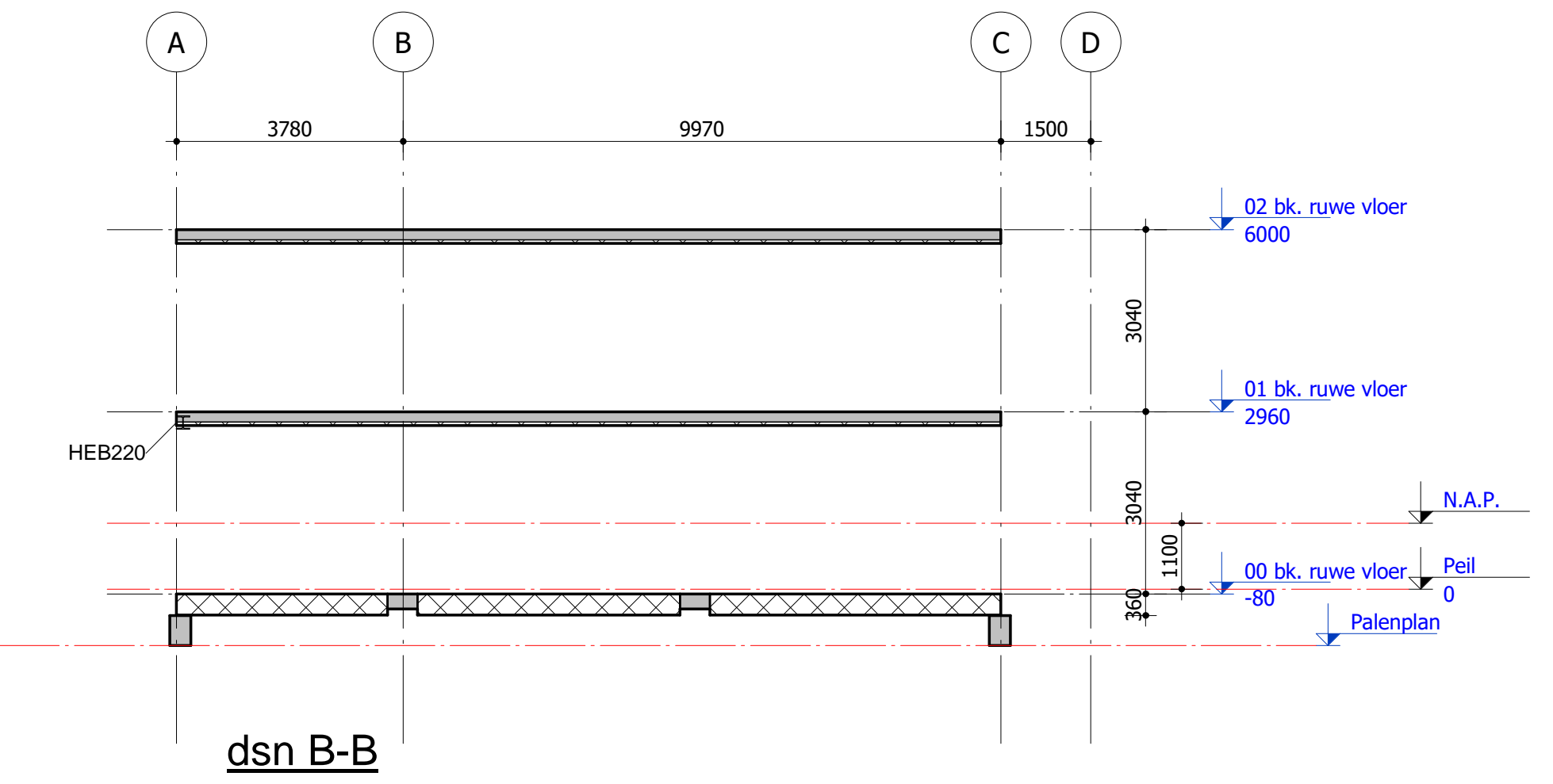
1e verdiepingvloer



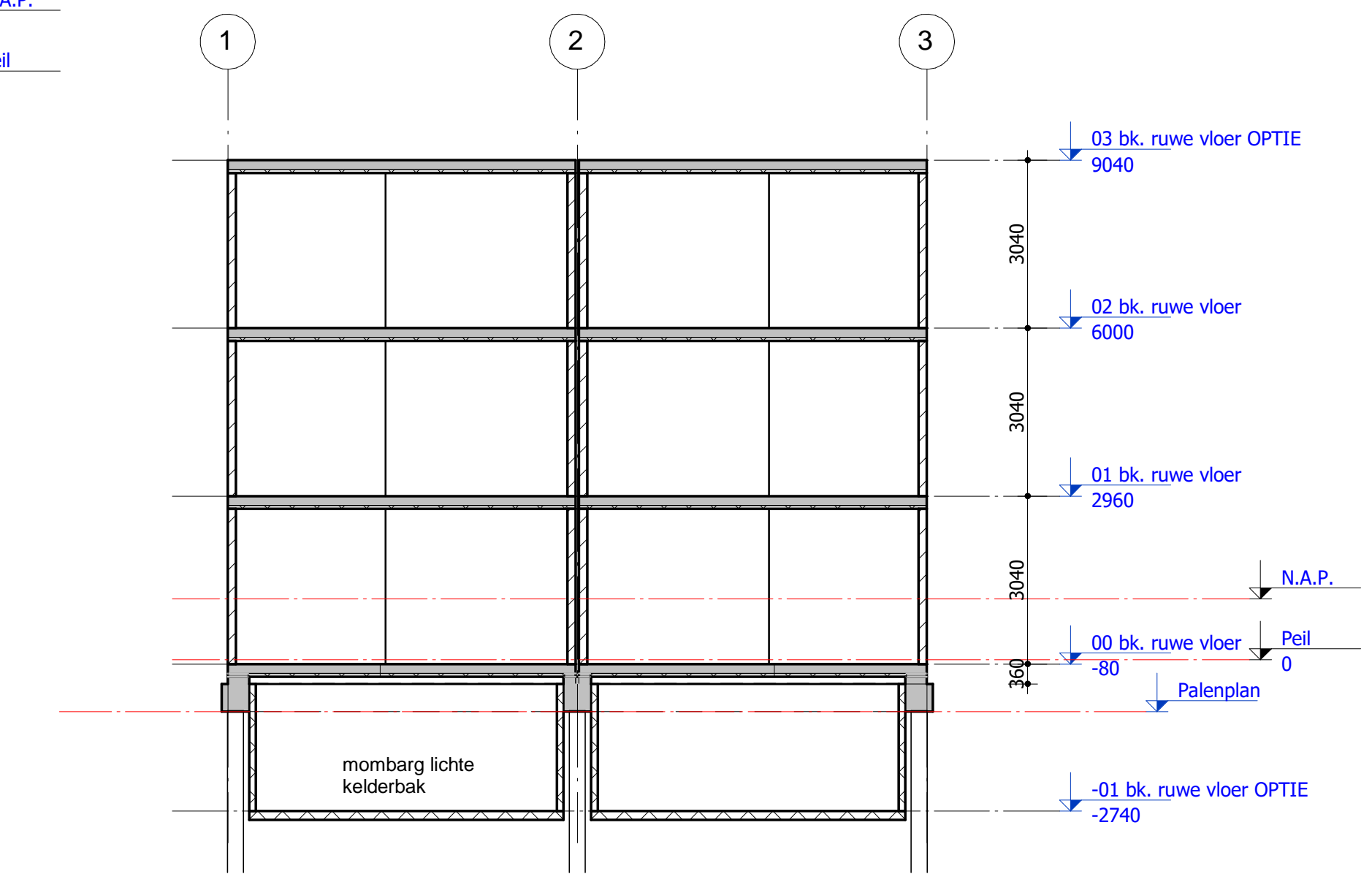
dakvloer



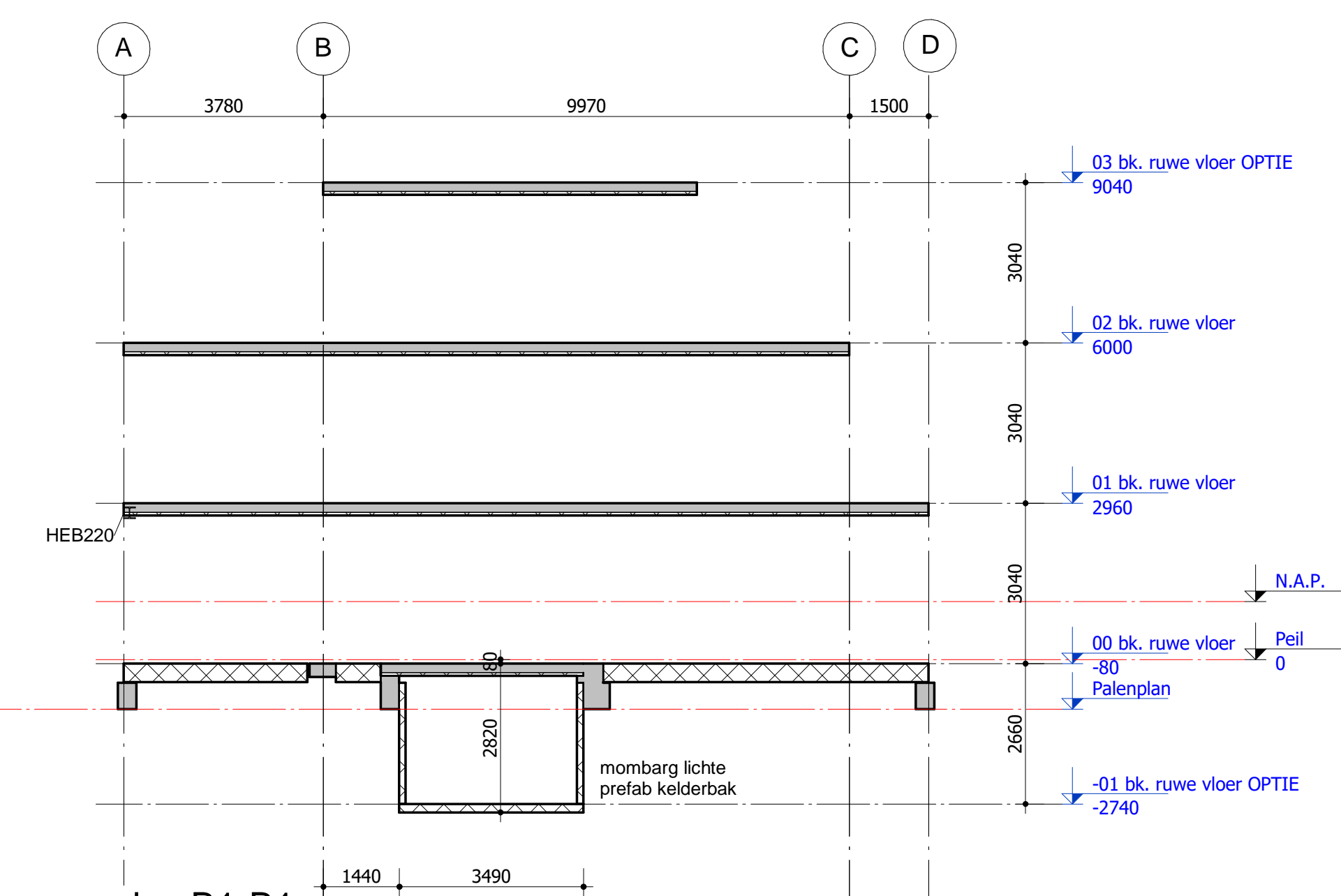
dsn A-A



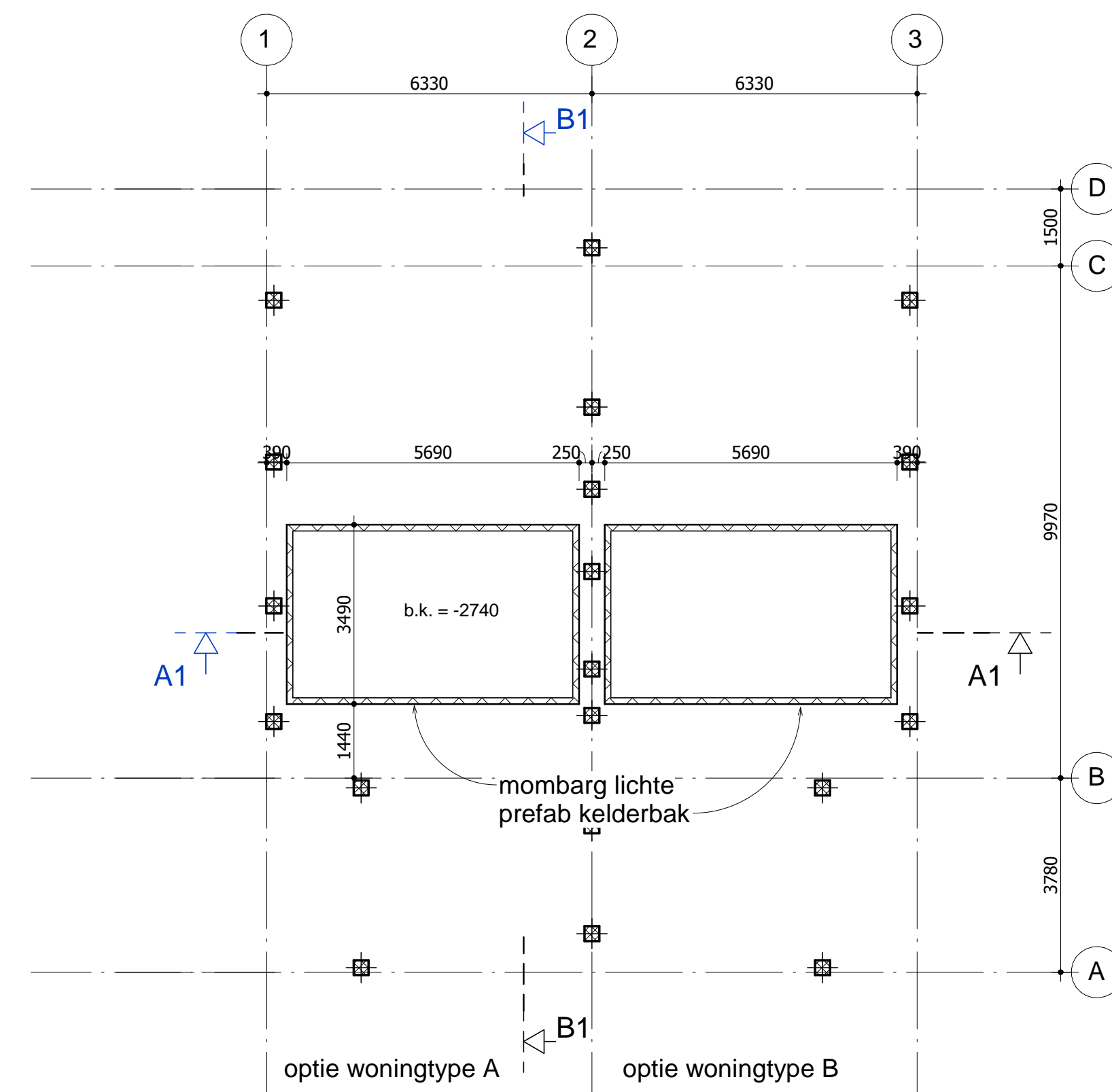
dsn B-B



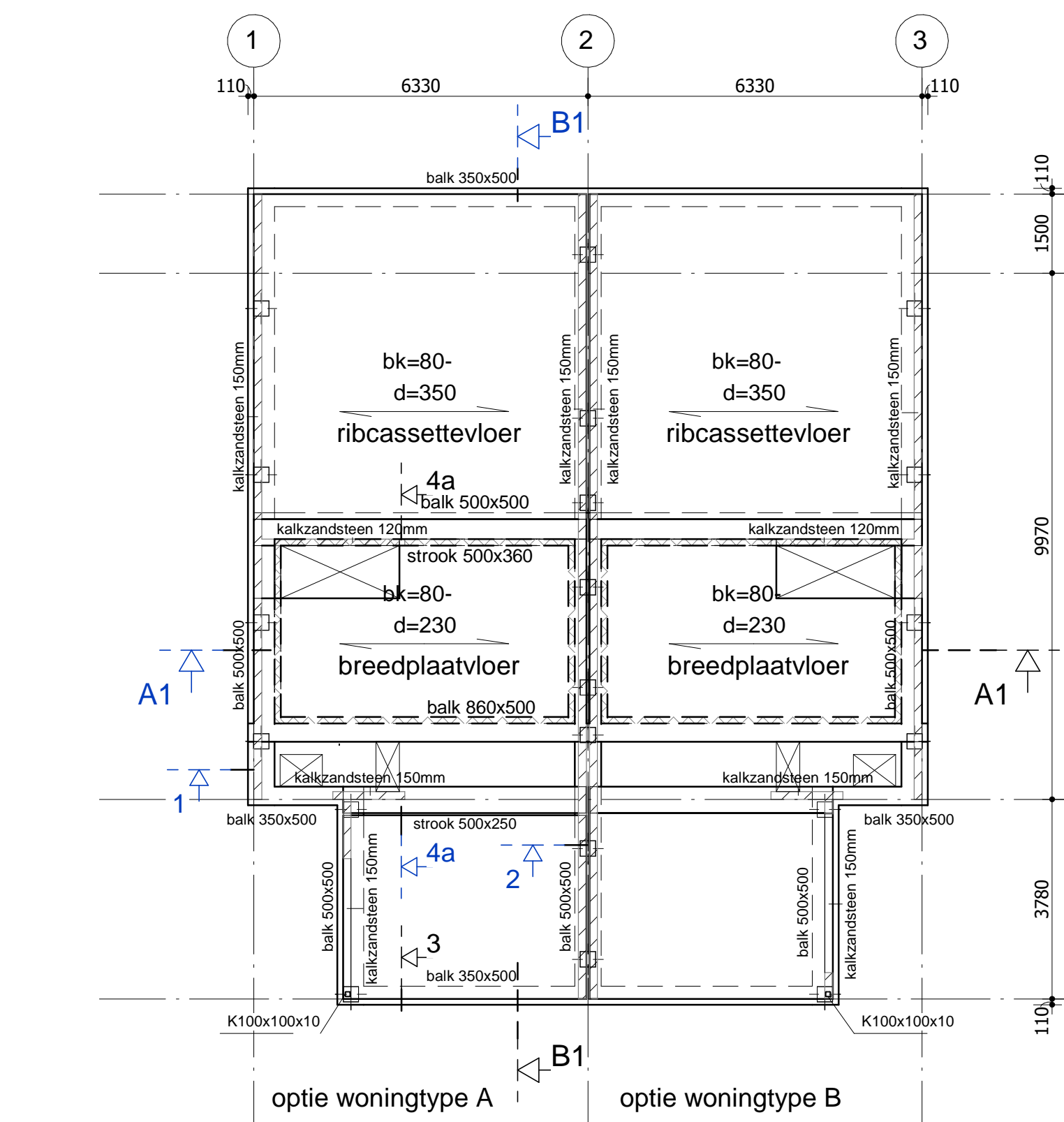
dsn A1-A1



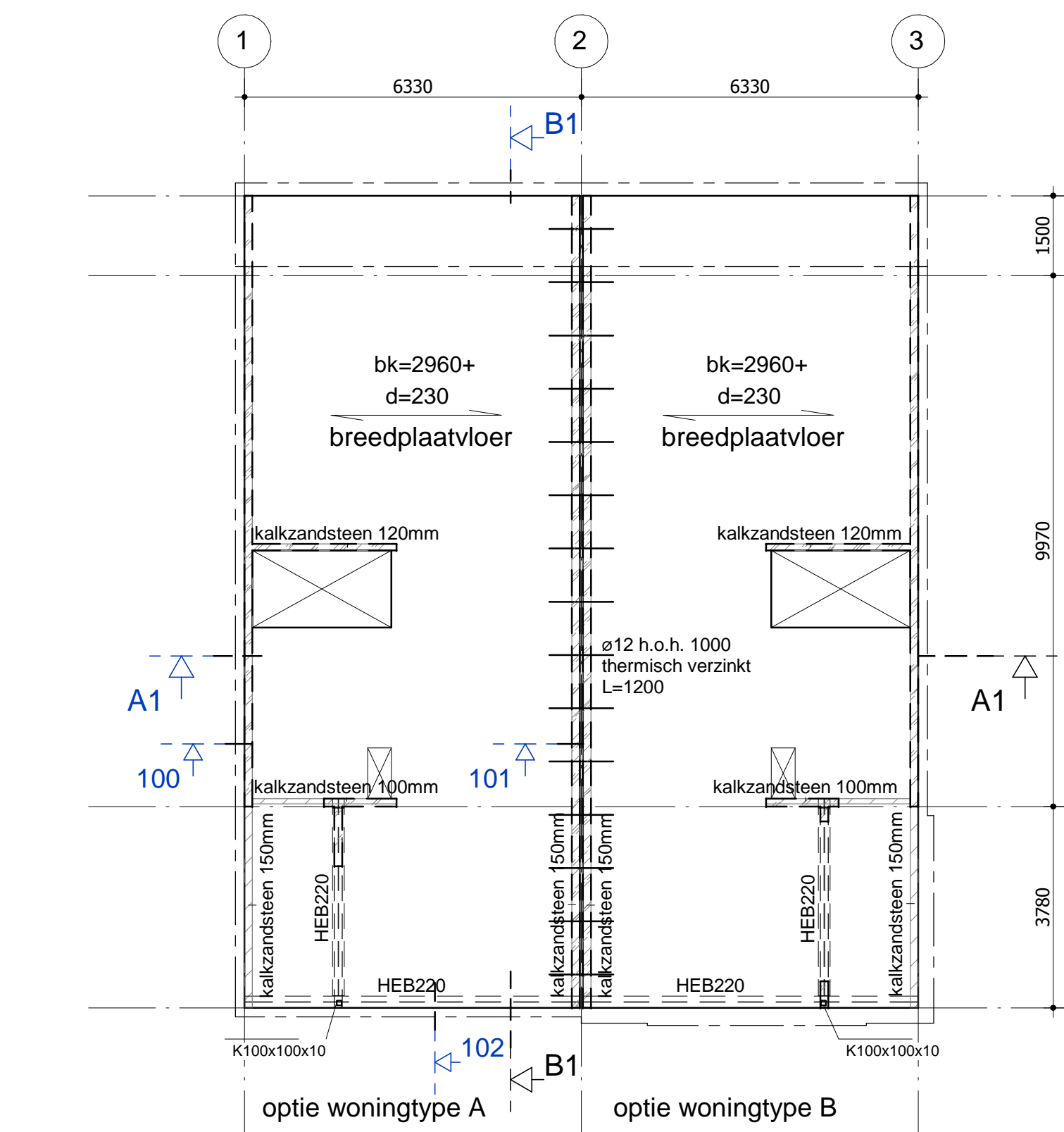
dsn B1-B1



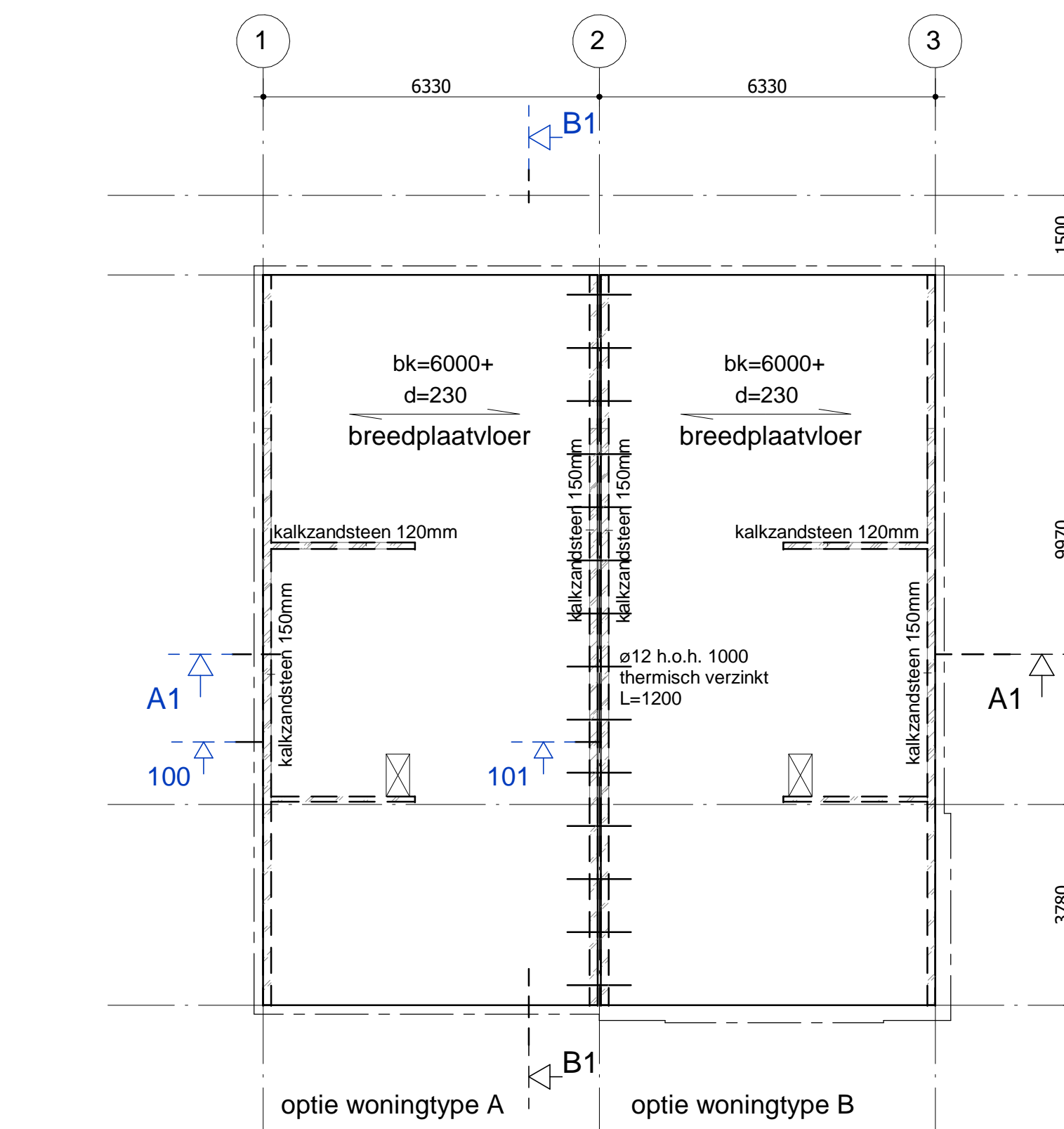
kelder optie



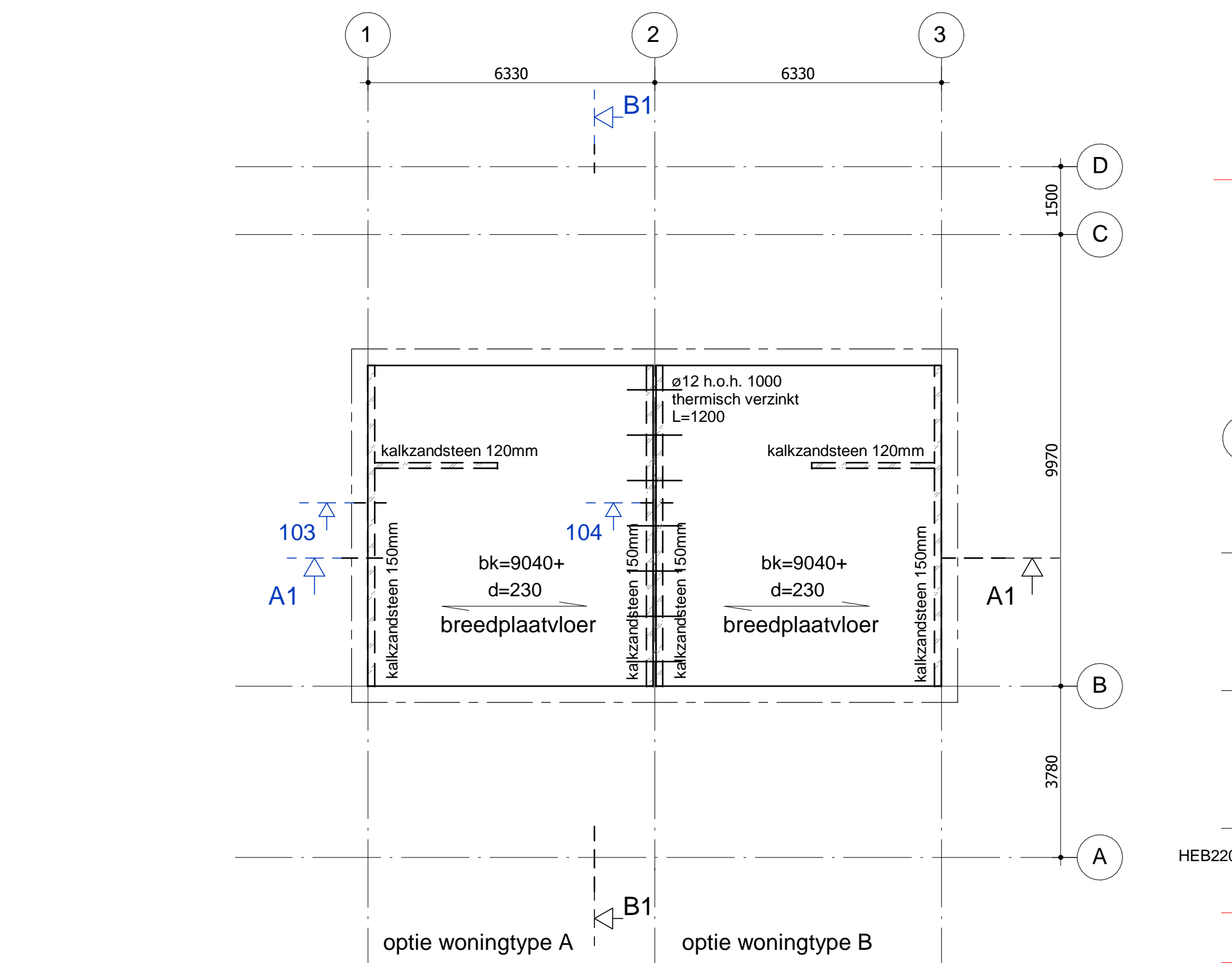
fundering / bg vloer optie



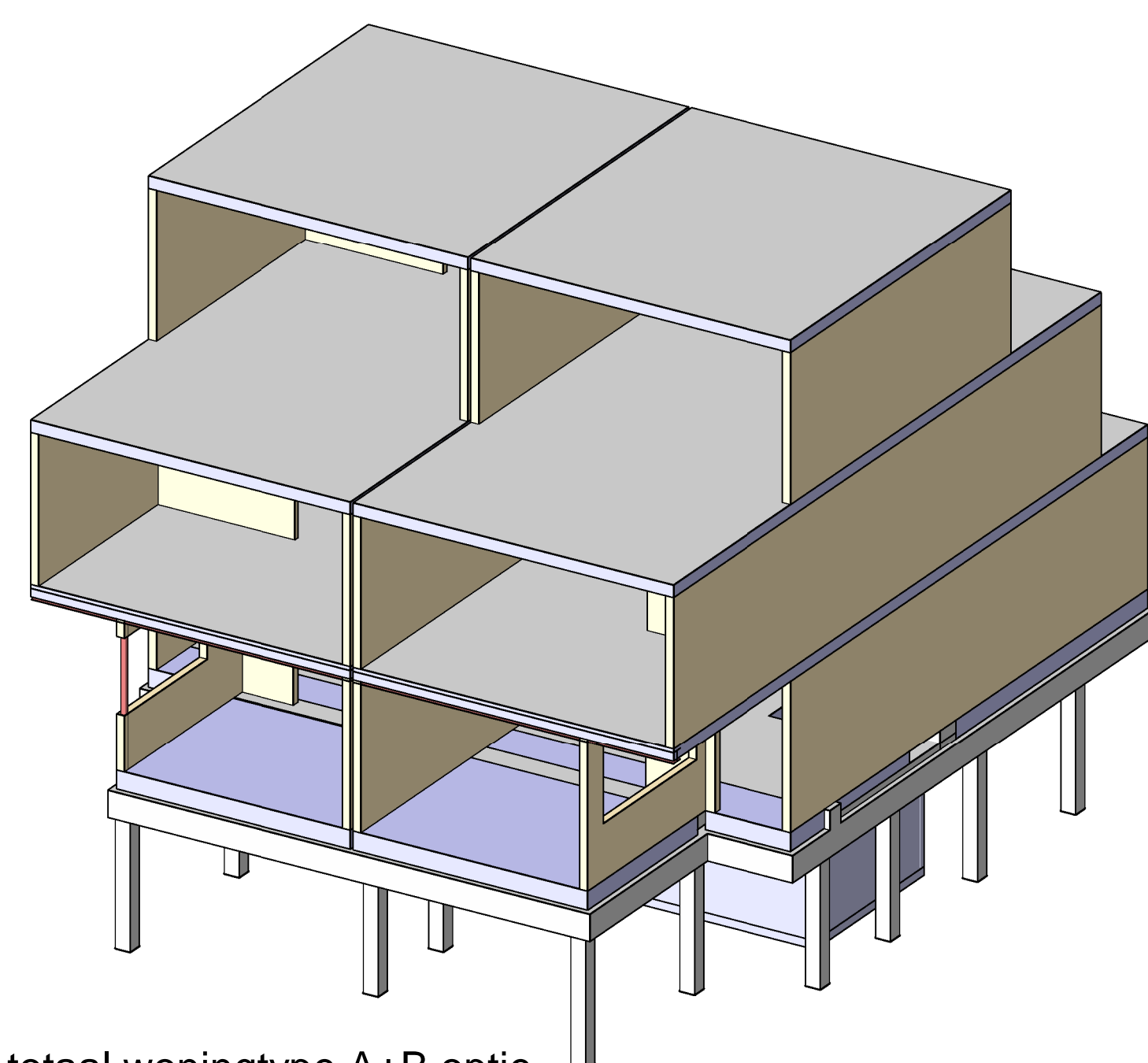
1e verdiepingvloer optie



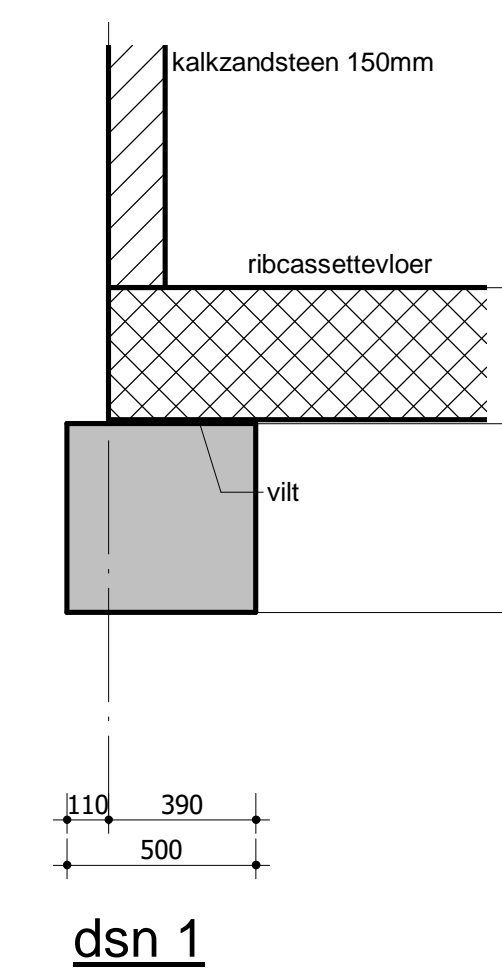
2e verdiepingvloer optie



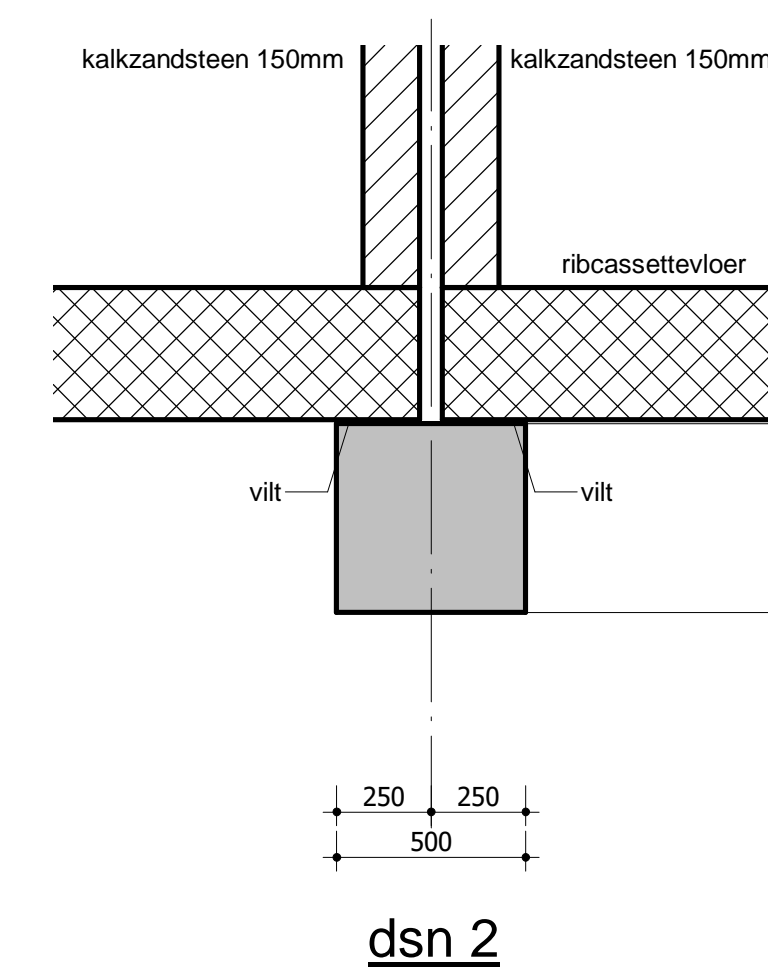
dakvloer optie



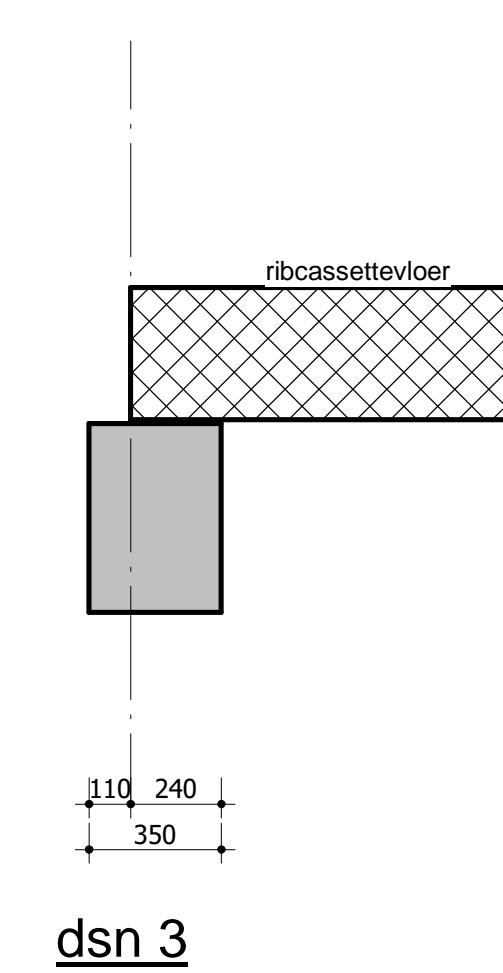
3D totaal woningtype A+B optie



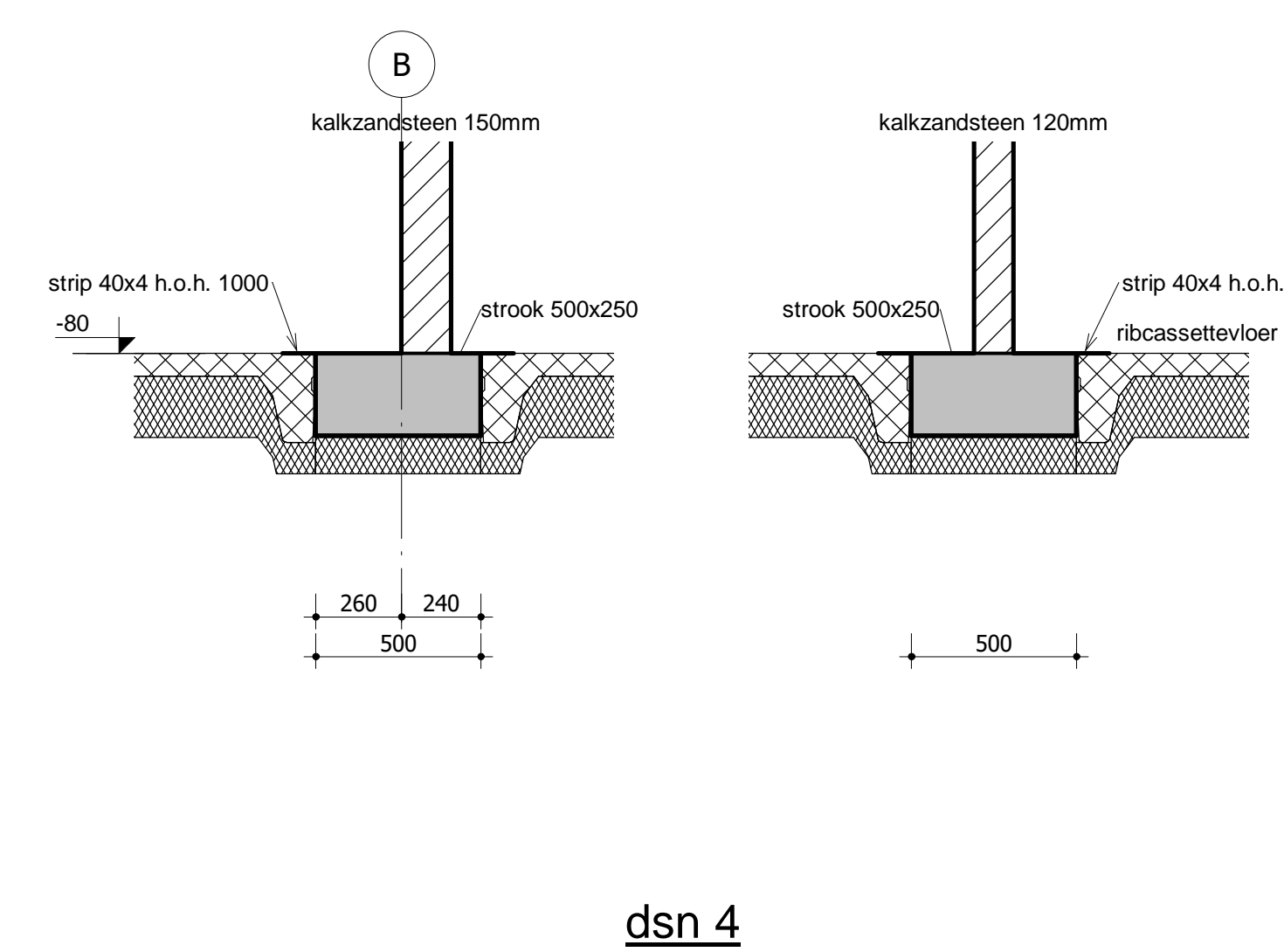
dsn 1



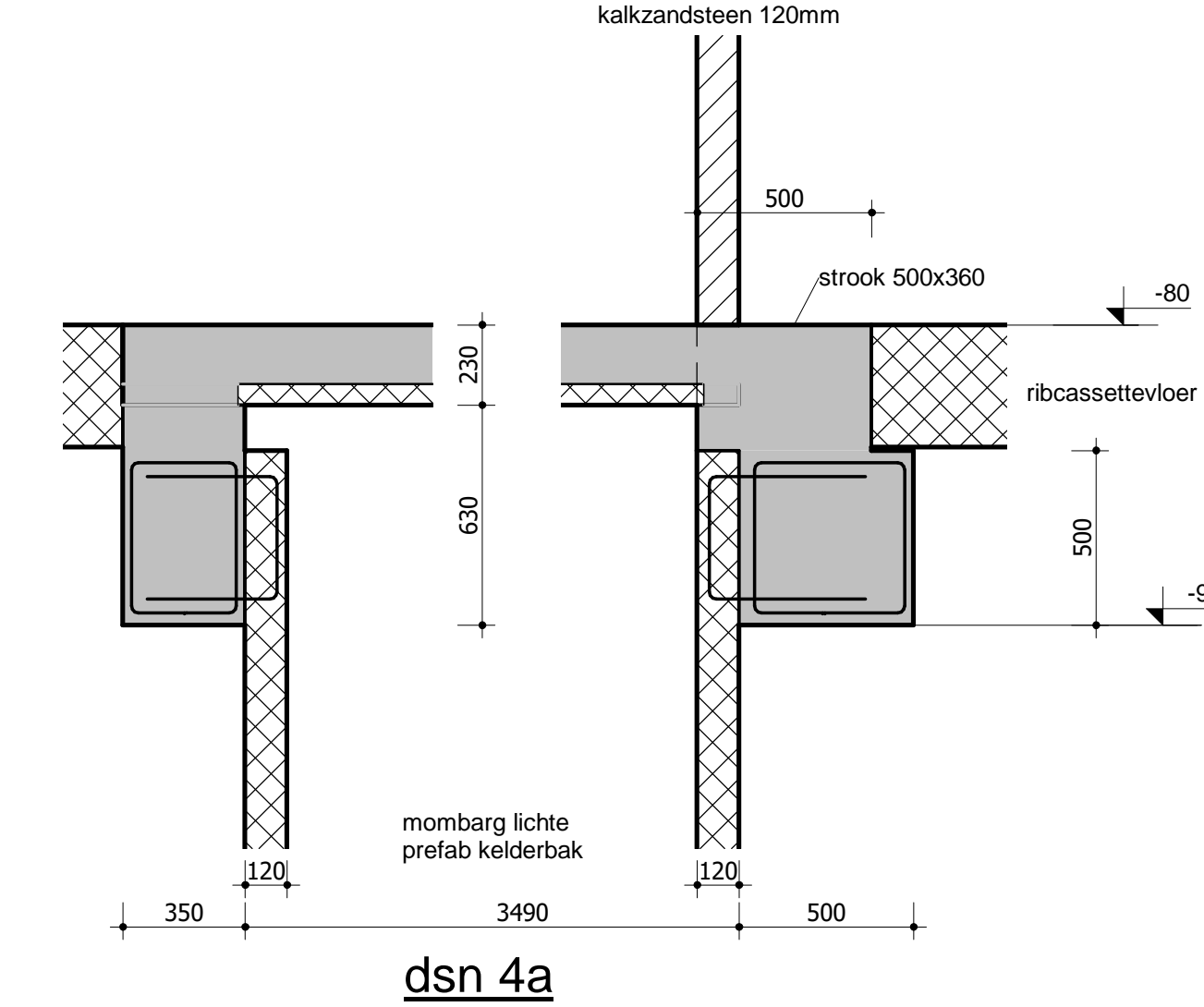
dsn 2



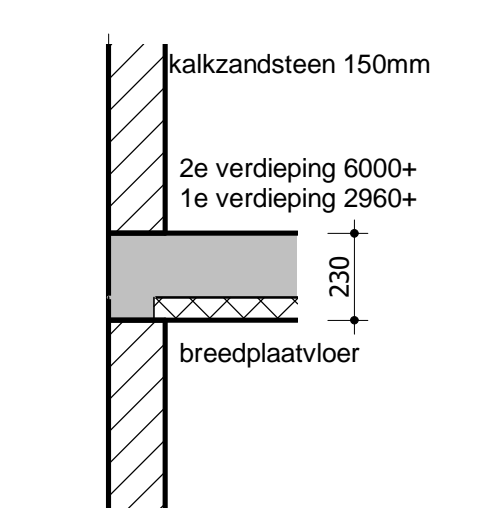
dsn 3



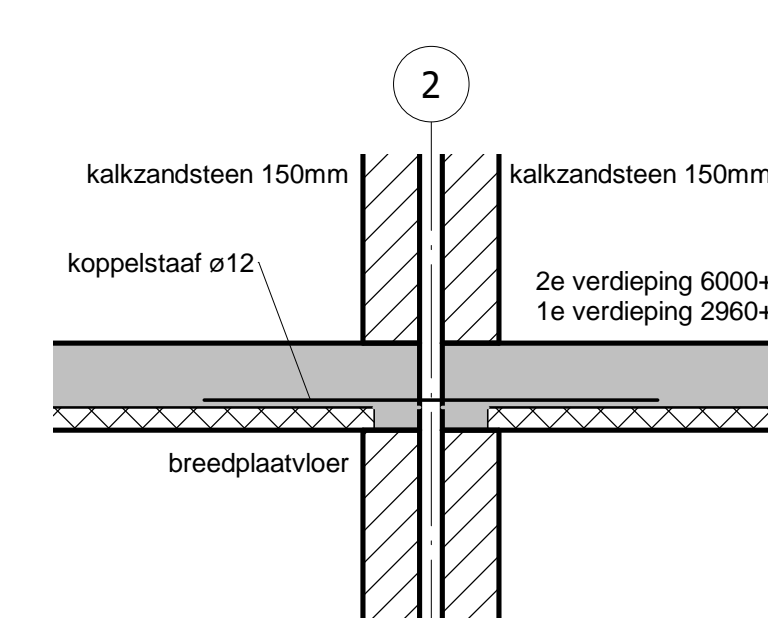
dsn 4



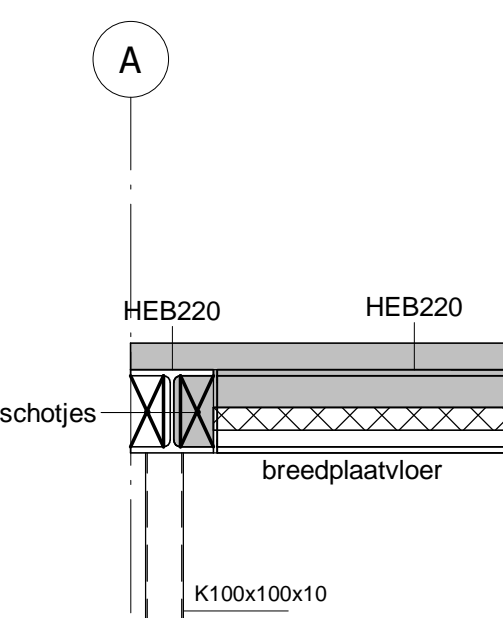
dsn 4a



dsn 100



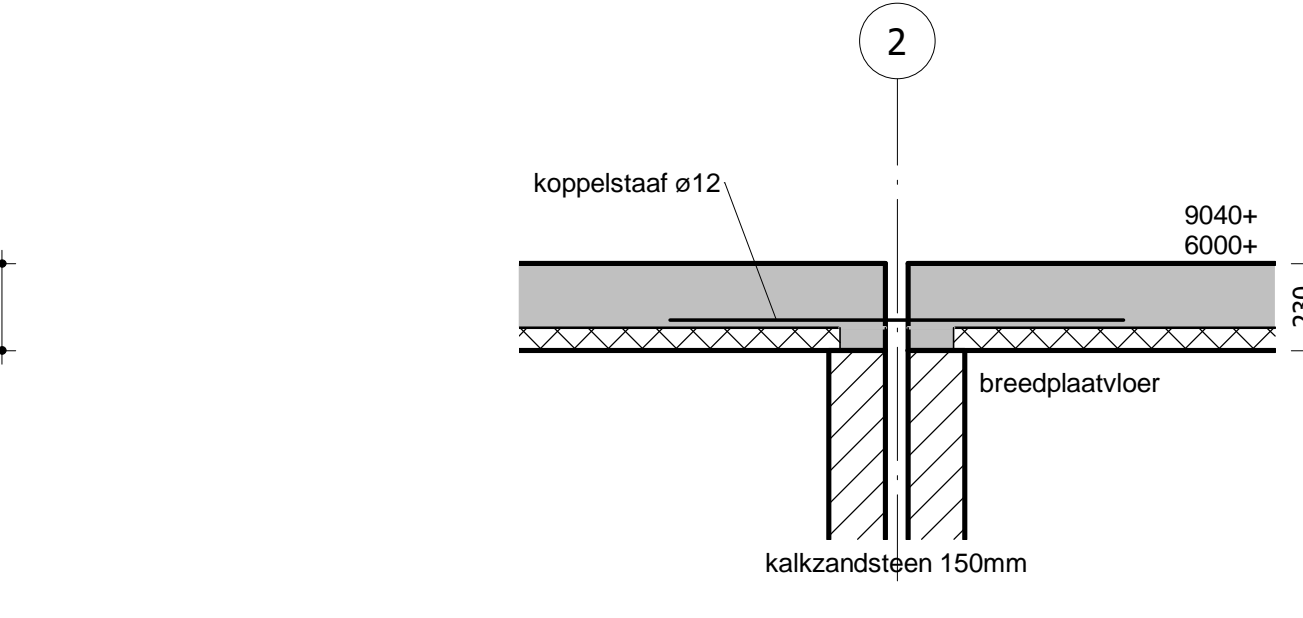
dsn 101



dsn 102



dsn 103



dsn 104

ALGEMENE OPMERKING

- Pell = 1,10m - N.A.P.
- Zie voor detaillering kalkzandsteen handboek werkvoorbereiding en uitvoering CALDURAN.
- Buis en kokerprofielen: staalkwaliteit S275. Overig staalkwaliteit S235.
- Bouwvallei: S. 8. Bouwafmeting M16, tenzij anders vermeld.
- Lasterij: S. 8. met. 4mm, tenzij anders aangegeven.
- Werkplaatstekeningen: tenzij de detailtekeningen van de staalconstructies te vervaardigen door de staalleverancier en deze ter goedkeuring zenden aan ons bureau.
- In te stellen anders bij de staalconstructie volgens afspraken van de staalleverancier.
- Profielen voorzien van kop en voetplaten.
- Raamspiegelingen tot 3,00m² in de gevel voorzien van losse latelen.
- In borstwering Vebo stalen borstweringsteunen toepassen.
- Sparringszone in de vloer.

TWP	1		
Middelenbos 1039	H		
3331 MC Dijkwerf	CG		
	F		
	E		
	D		
	C		
	B	17-07-2019	AJR definitief
	A	11-07-2019	AJR controle ontwerp
	O	10-07-2019	AJR, R. controle ontwerp

opdrachtgever: v.d. tempel Bouw & Ontwikkeling Schiedam
 opdracht: Architectenbureau Rutten van der Weijden te Rotterdam

project nr.: 18052
 project omschrijving: Cornelis van Tollaan Rotterdam

tekening nr.: BB0
 ontworpen door: constructie woningtype A en B
 bestemd voor: bestek

school: 1:100
 tek. formaat: 841x1470
 project leiding: [naam]
 senior architect: [naam]
 projectleider: [naam]
 constructeur: [naam]