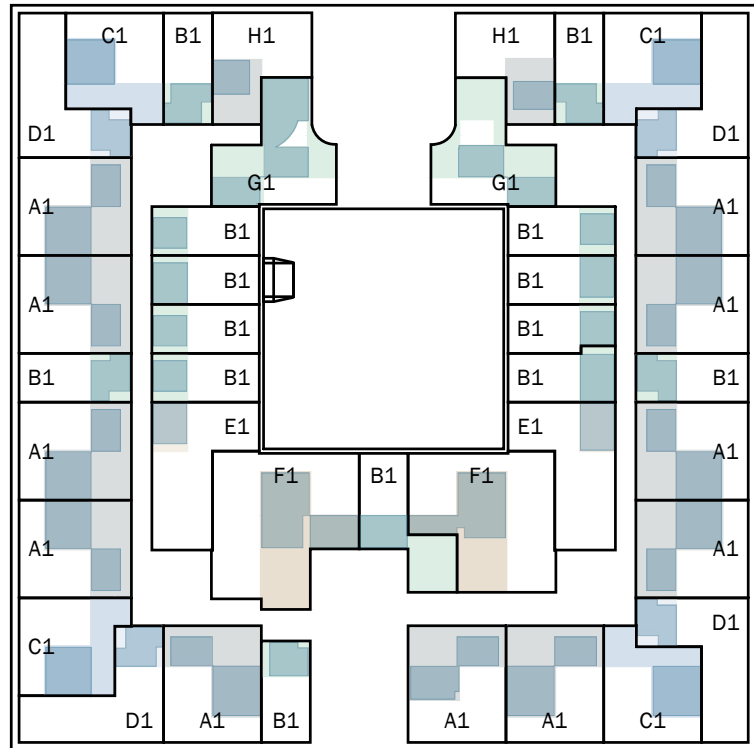
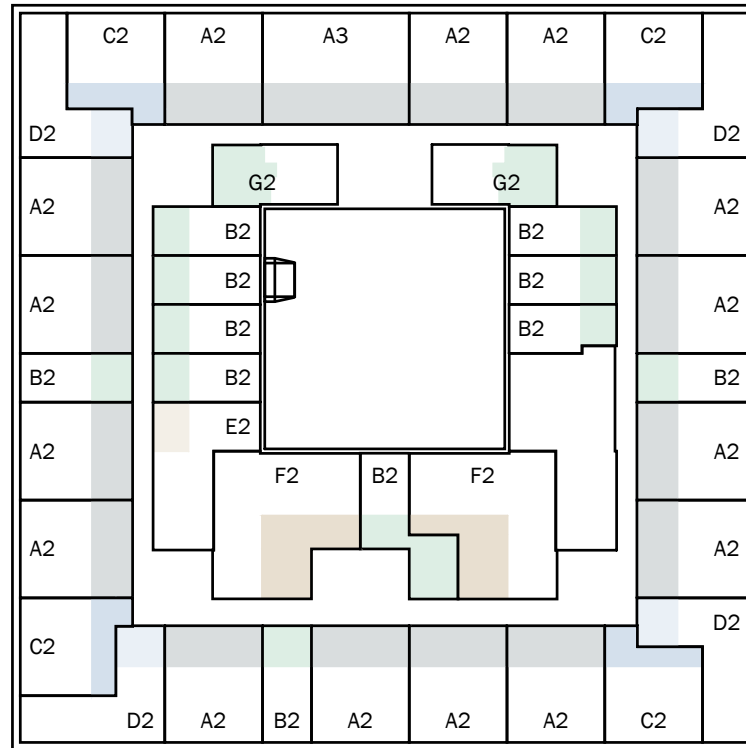




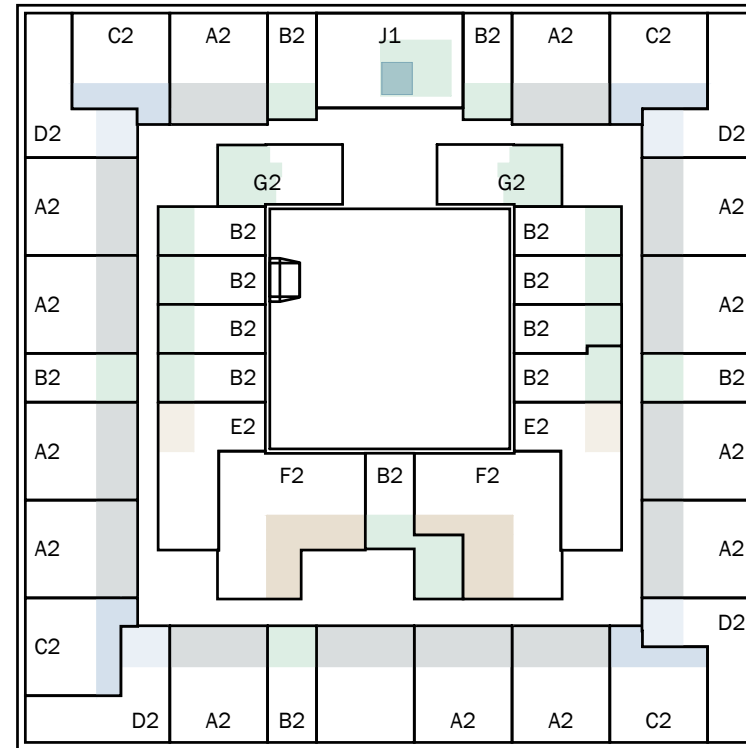
project: WEST507 Rotterdam	projectnummer: 16034
opdrachtgever: Waterford Investments & Vervat Vastgoed Rotterdam	schaal: 1:100
onderwerp: Definitief ontwerp Woningtypes - verblijfsgebieden	datum: 22.12.2017
wijzigingen: a 22.12.2017 d g b e h c f i	formaat: A3
	tekeningnummer: D0-670



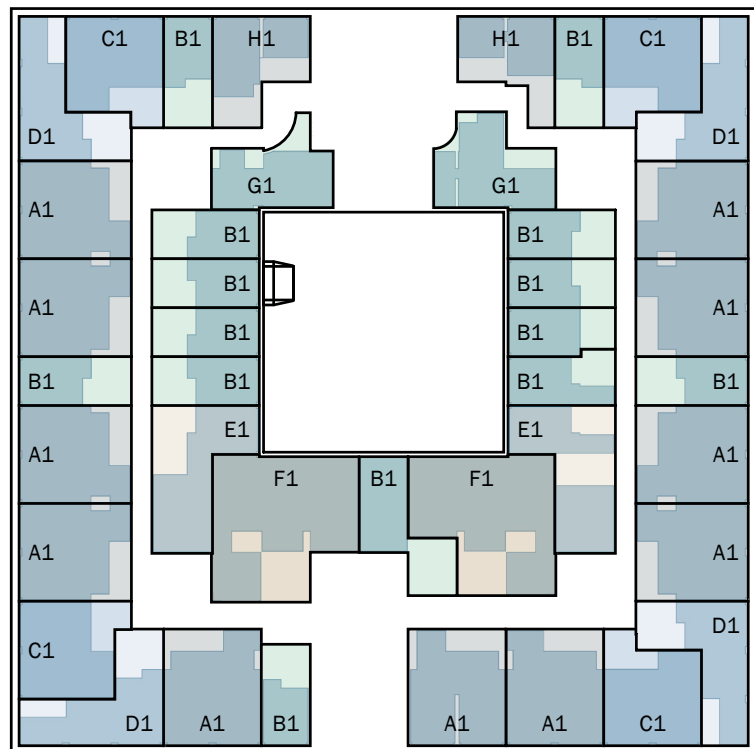
begangrond - entresol



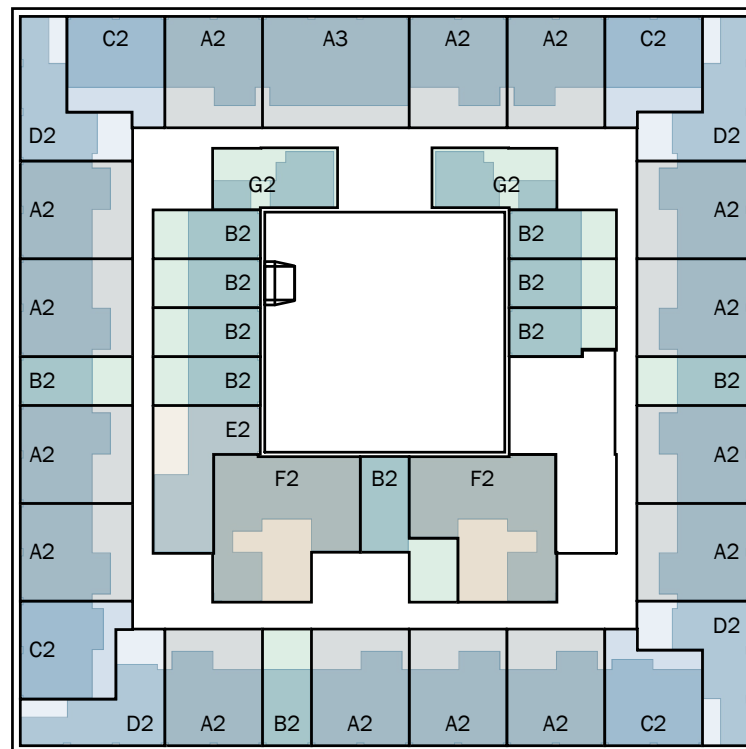
verdieping 1 - entresol



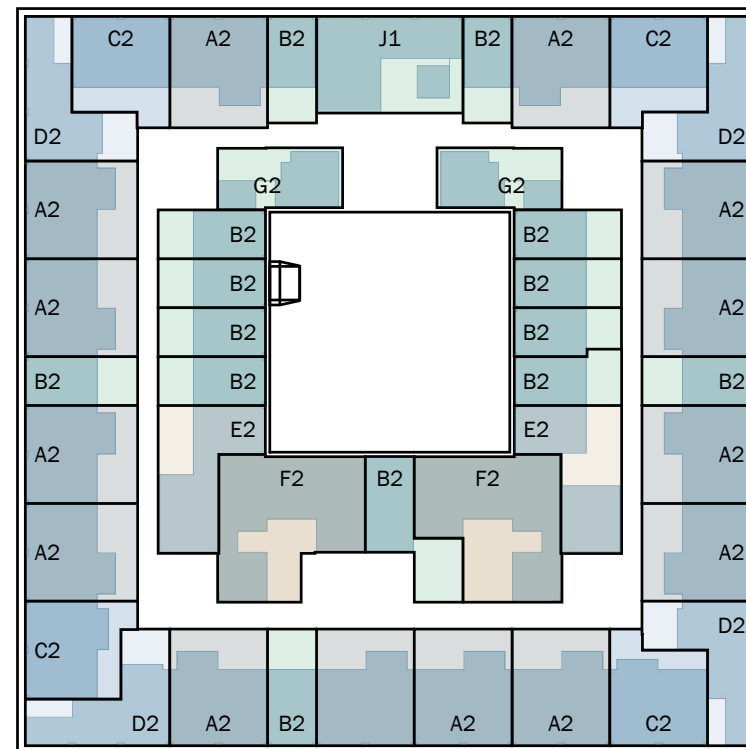
verdieping 2 - entresol



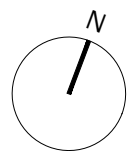
begangrond - entreelaag



verdieping 1 - entreelaag

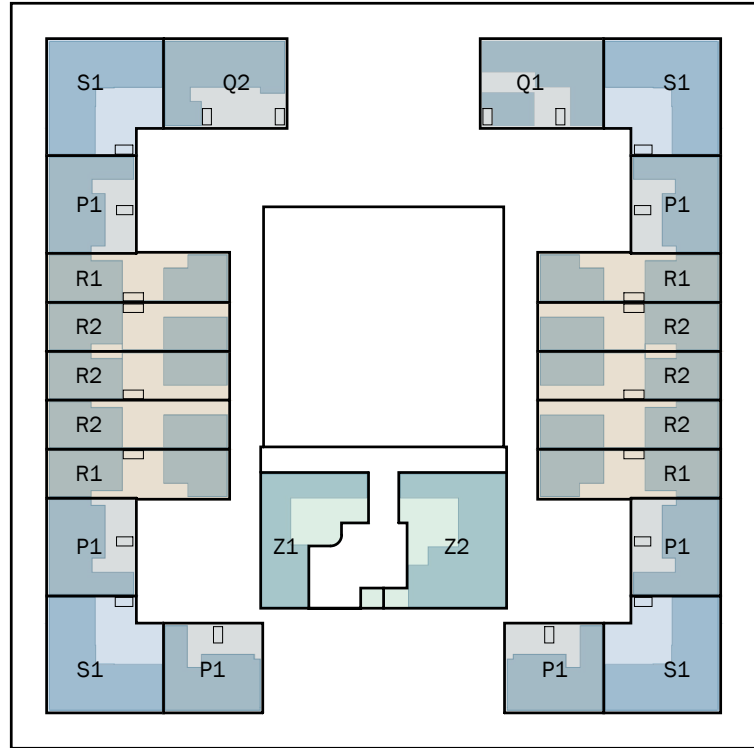


verdieping 2 - entreelaag

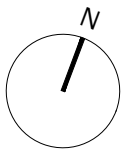


project: WEST507 Westzeedijk 507, Rotterdam	opdrachtgever: Waterford Investments & Vervat Vastgoed Rotterdam	onderwerp: Nieuwe situatie Overzicht woningtypen	projectnummer: 16034	formaat: A3	schaal: 1:750	datum: 22.12.2017	tekeningnummer: DO.170
---	--	--	-------------------------	----------------	------------------	----------------------	---------------------------

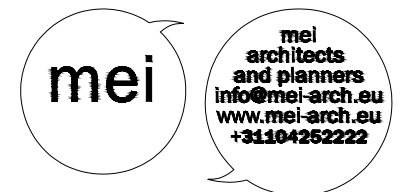


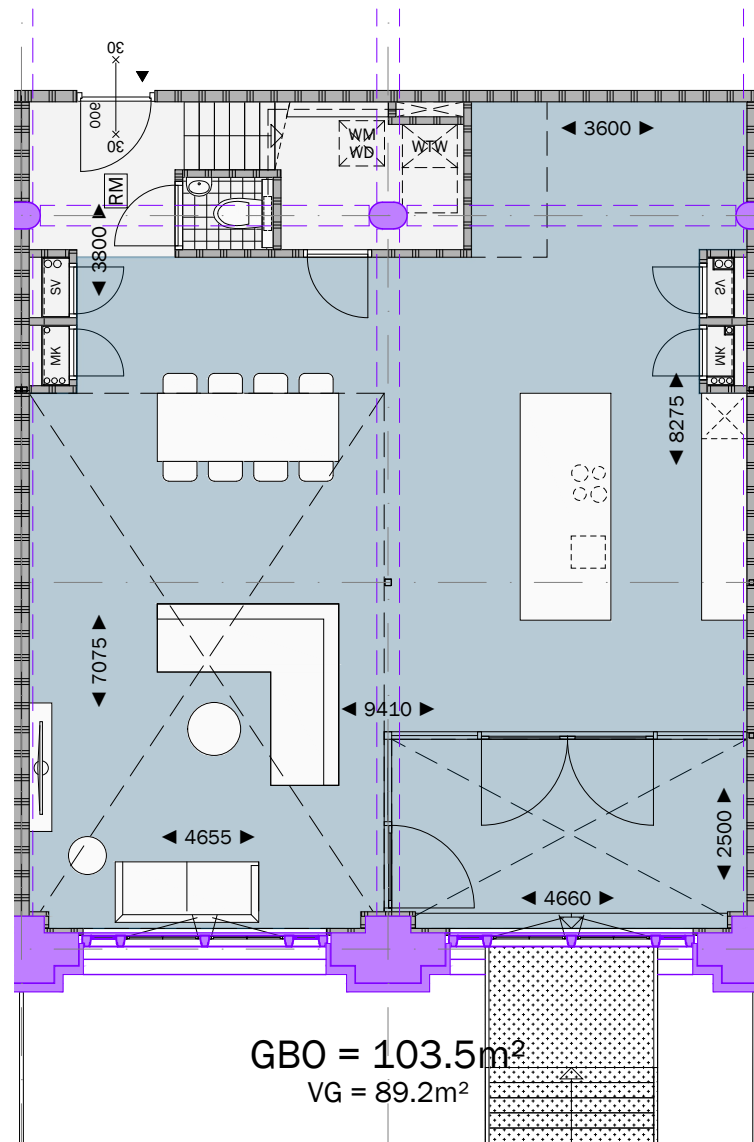


verdieping 3

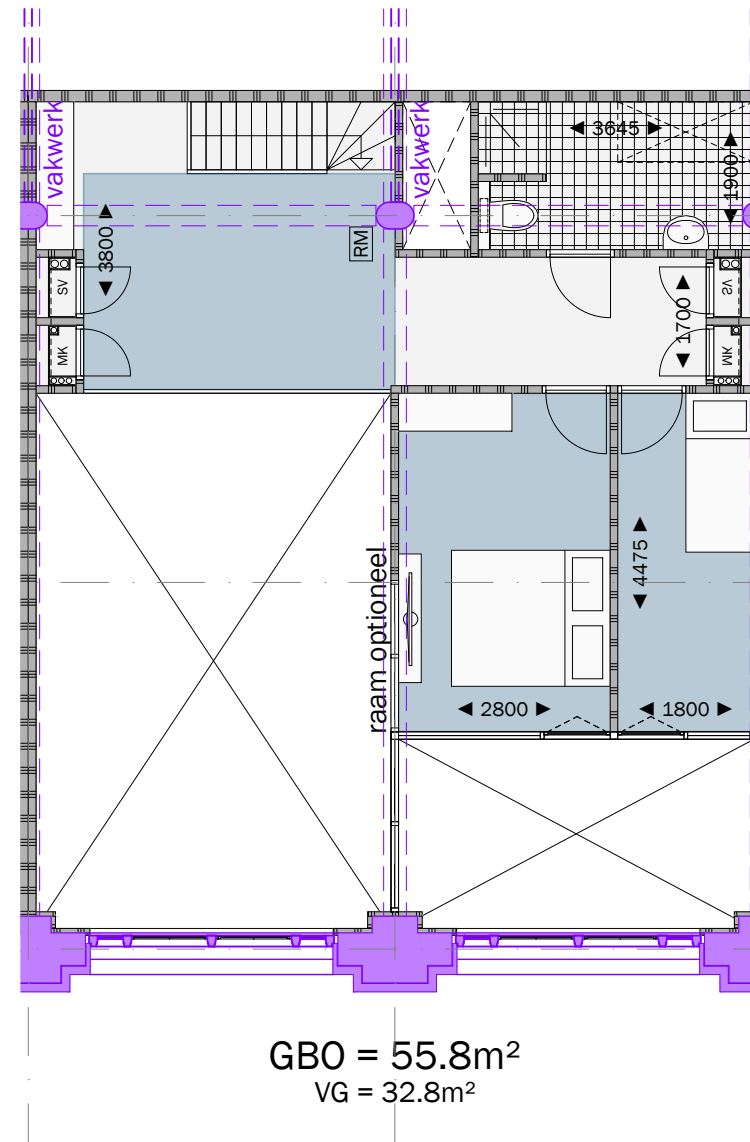


project: WEST507 Westzeedijk 507, Rotterdam	opdrachtgever: Waterford Investments & Vervat Vastgoed Rotterdam	onderwerp: Nieuwe situatie Overzicht woningtypen	projectnummer: 16034	formaat: A3	schaal: 1:750	datum: 22.12.2017	tekeningnummer: DO.170
--	---	--	--------------------------------	-----------------------	-------------------------	-----------------------------	----------------------------------



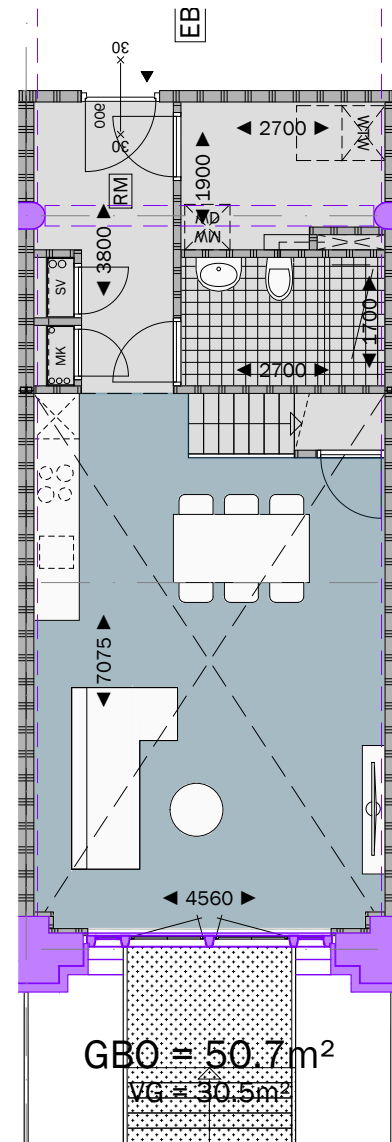


Woningtype A1
begane grond - entreelaag

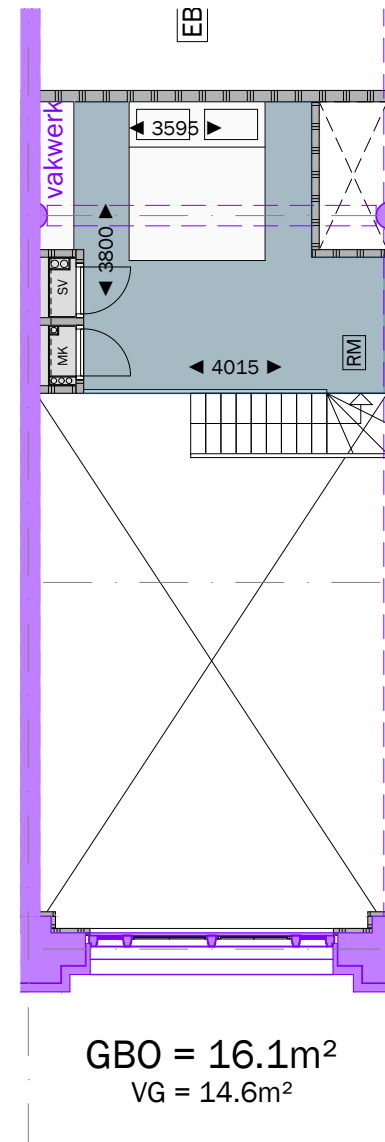


Woningtype A1
begane grond - entresol

project: WEST507 Westzeedijk 507, Rotterdam	opdrachtgever: Waterford Investments & Vervat Vastgoed Rotterdam	onderwerp: Nieuwe situatie Woningtype A1	projectnummer: 16034	formaat: A3	schaal: 1:100	datum: 22.12.2017	tekeningnummer: D0.170
---	--	--	-------------------------	----------------	------------------	----------------------	---------------------------



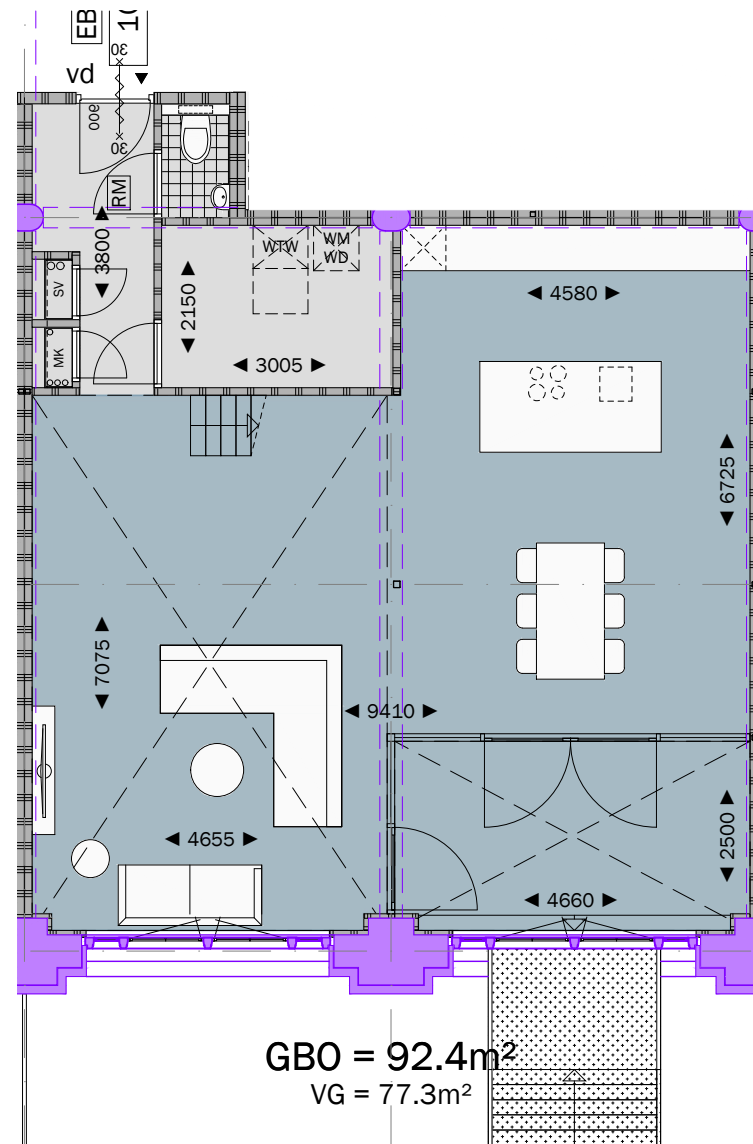
Woningtype B1
beganegrond



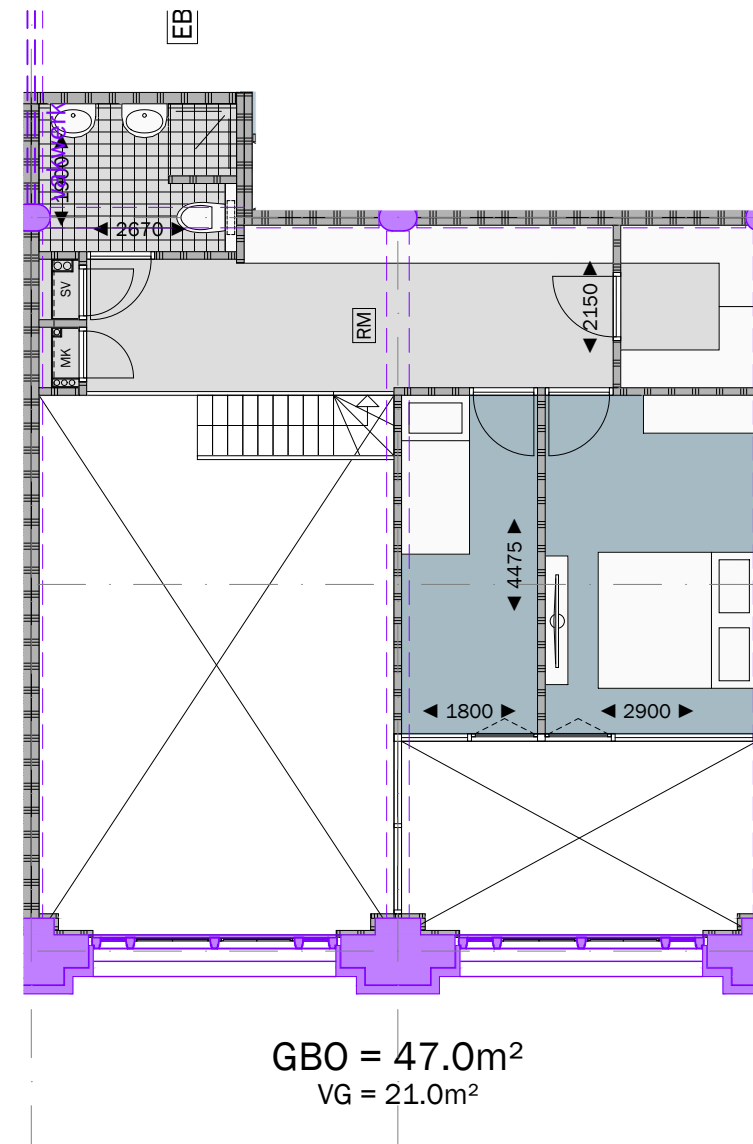
Woningtype B1
beganegrond - entresol

project: WEST507 Westzeedijk 507, Rotterdam	opdrachtgever: Waterford Investments & Vervat Vastgoed Rotterdam	onderwerp: Nieuwe situatie Woningtype B1	projectnummer: 16034	formaat: A3	schaal: 1:100	datum: 22.12.2017	tekeningnummer: DO.170
---	--	--	-------------------------	----------------	------------------	----------------------	---------------------------



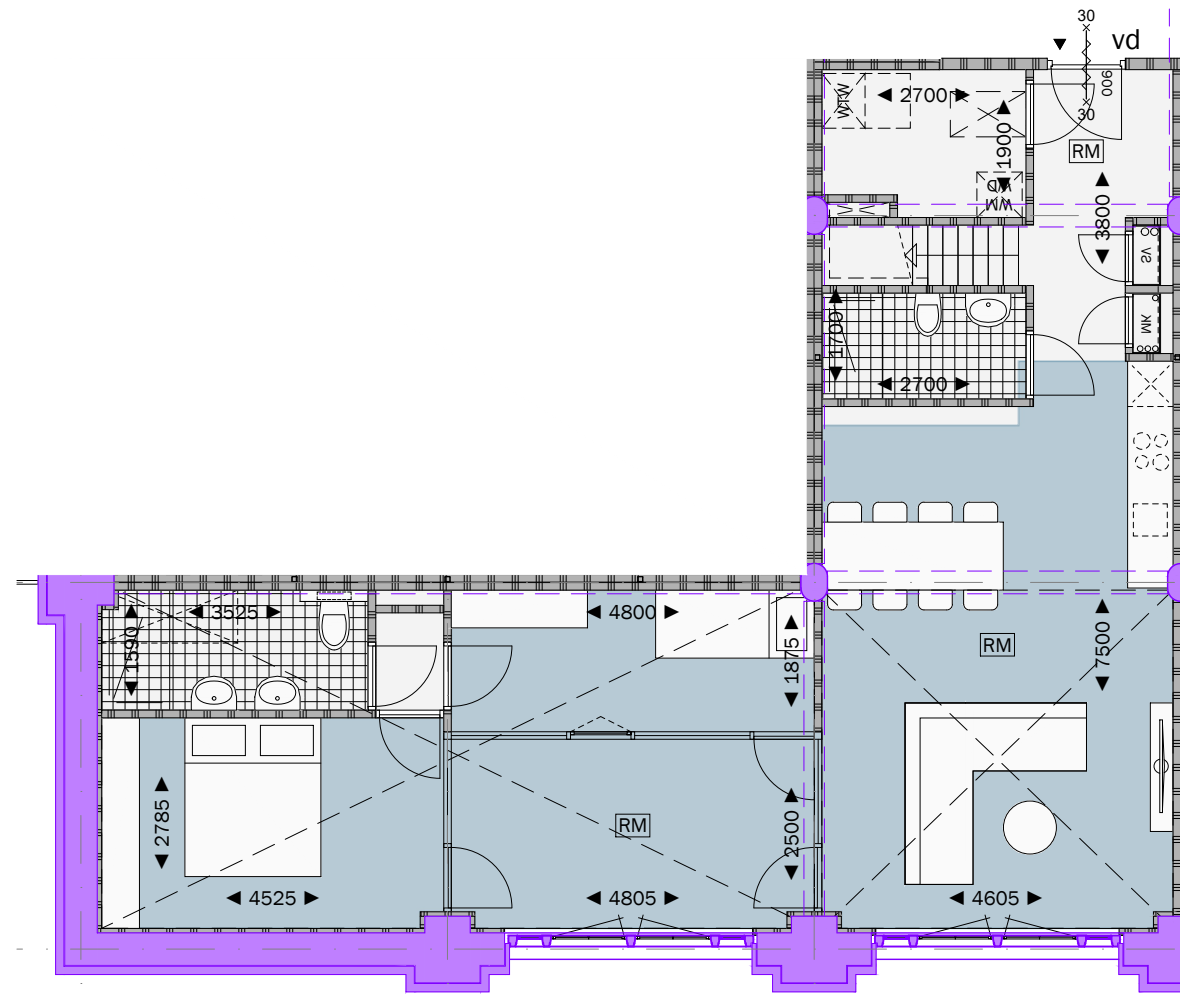


Woningtype C1
begane grond - entreelaag



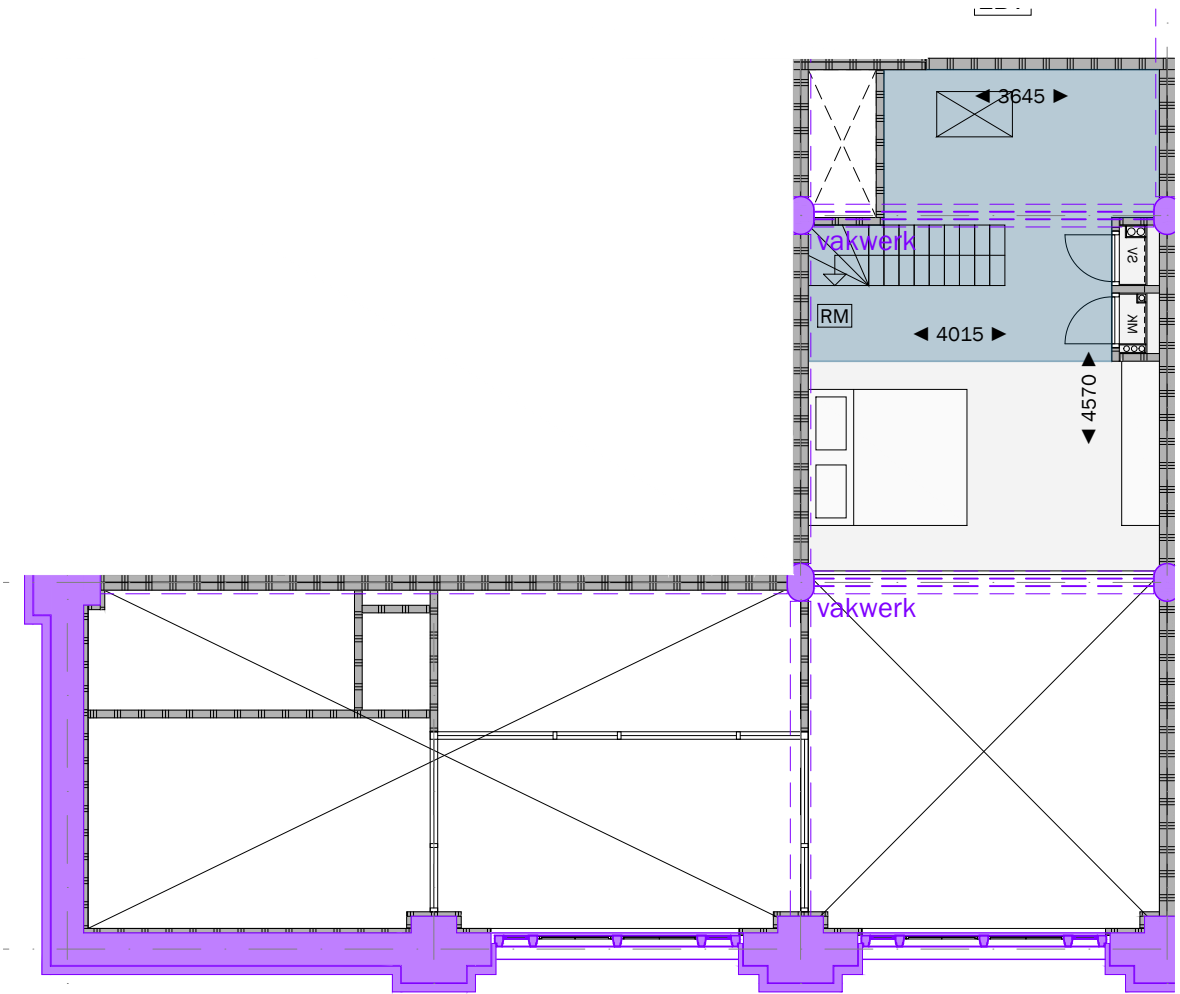
Woningtype C1
begane grond - entresol

project: WEST507 Westzeedijk 507, Rotterdam	opdrachtgever: Waterford Investments & Vervat Vastgoed Rotterdam	onderwerp: Nieuwe situatie Woningtype C1	projectnummer: 16034	formaat: A3	schaal: 1:100	datum: 22.12.2017	tekeningnummer: D0.170
---	--	--	-------------------------	----------------	------------------	----------------------	---------------------------



te openen souterrain ramen:
 26,4m² bruto, 17,8m² netto (75%)
GBO = 95.0m²
 VG = 67.1m²

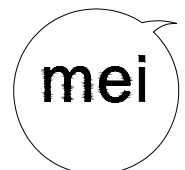
Woningtype D1
 beganegrand - entreelaag

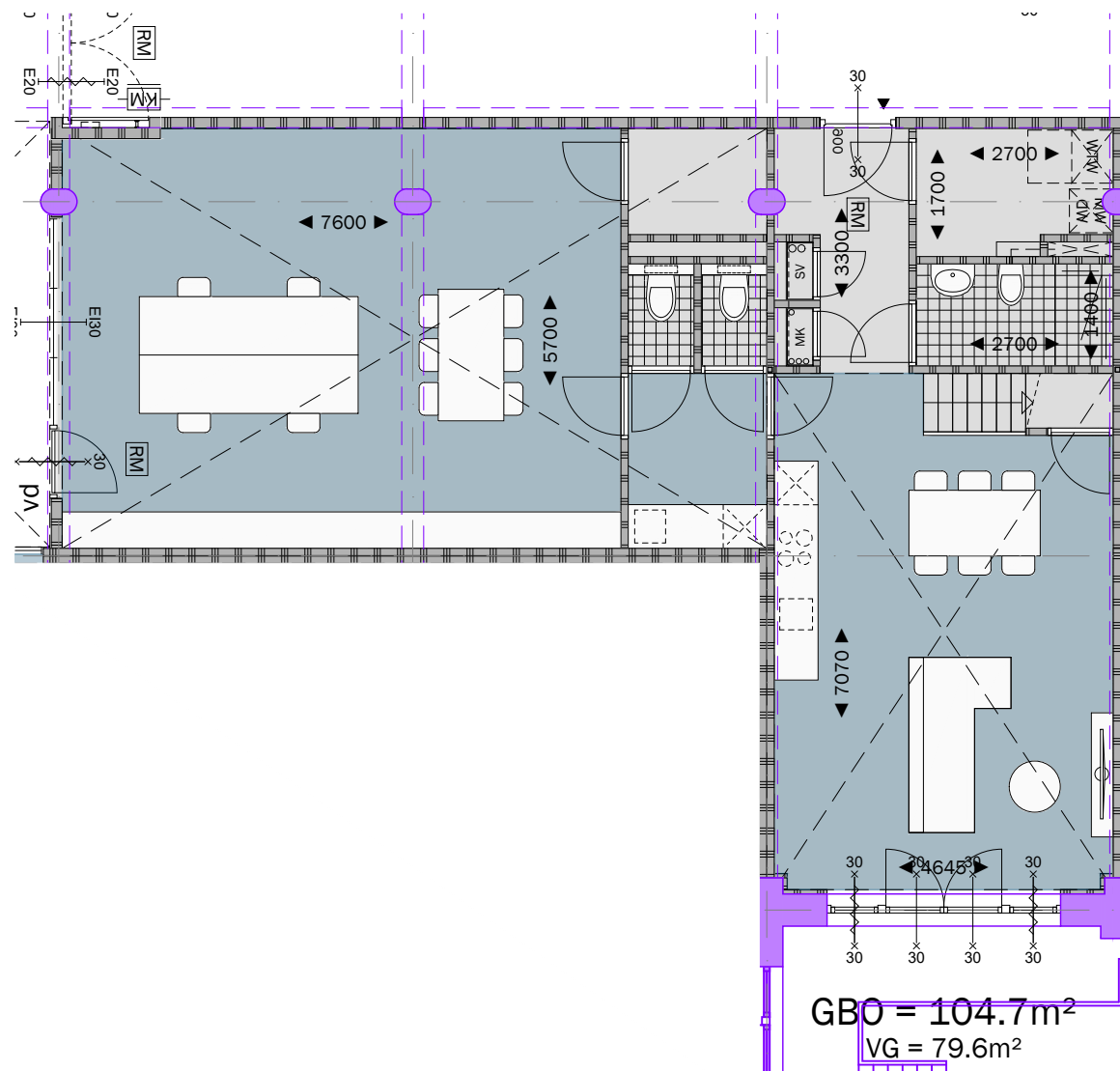


GBO = 29.0m²
 VG = 14.7m²

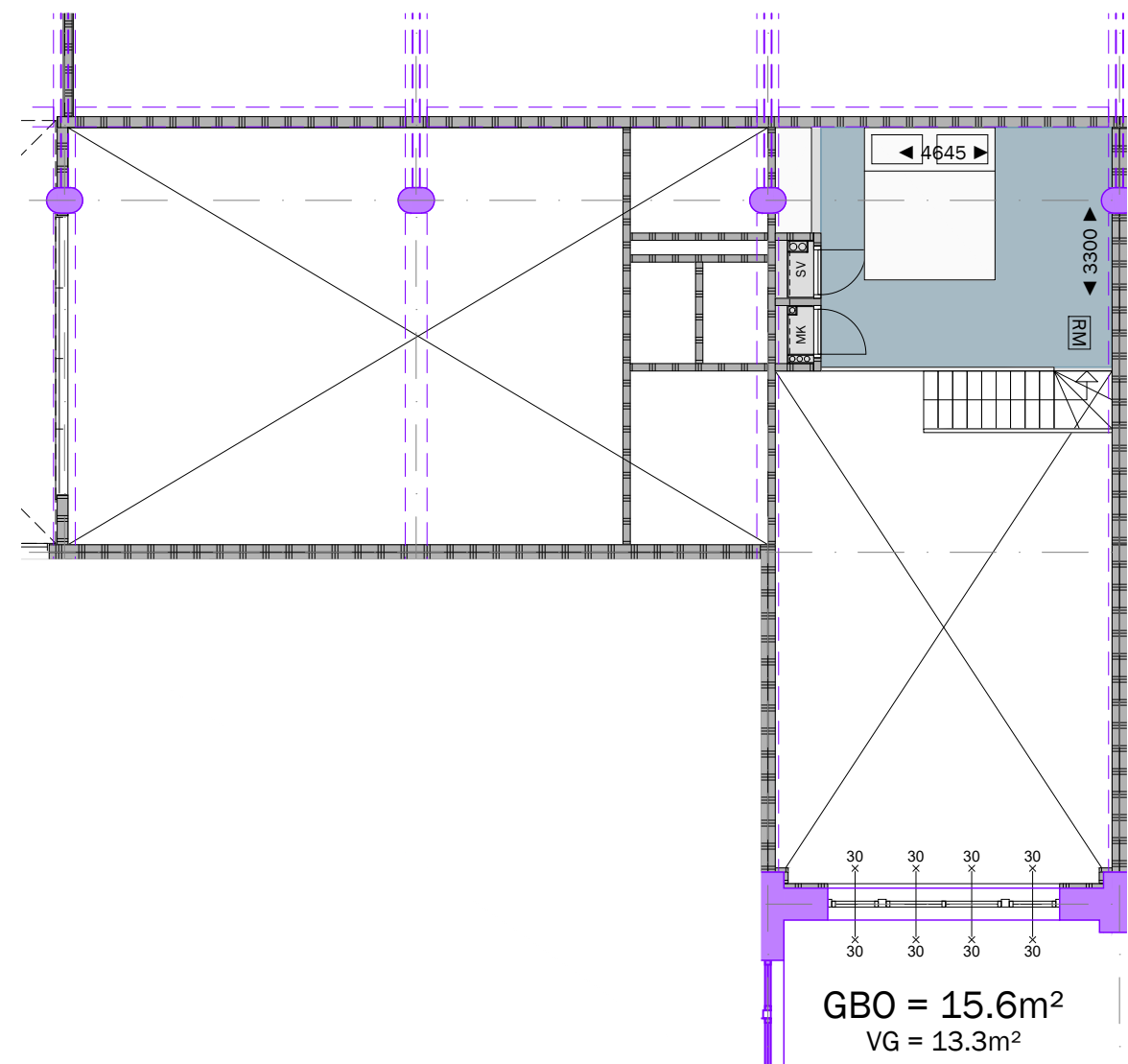
Woningtype D1
 beganegrand - entresol

project: WEST507 Westzeedijk 507, Rotterdam	opdrachtgever: Waterford Investments & Vervat Vastgoed Rotterdam	onderwerp: Nieuwe situatie Woningtype D1	projectnummer: 16034	formaat: A3	schaal: 1:100	datum: 22.12.2017	tekeningnummer: DO.170
---	--	--	-------------------------	----------------	------------------	----------------------	---------------------------



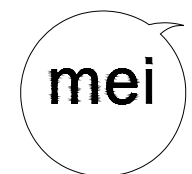


Woningtype E1
beganegrand - entreelaag

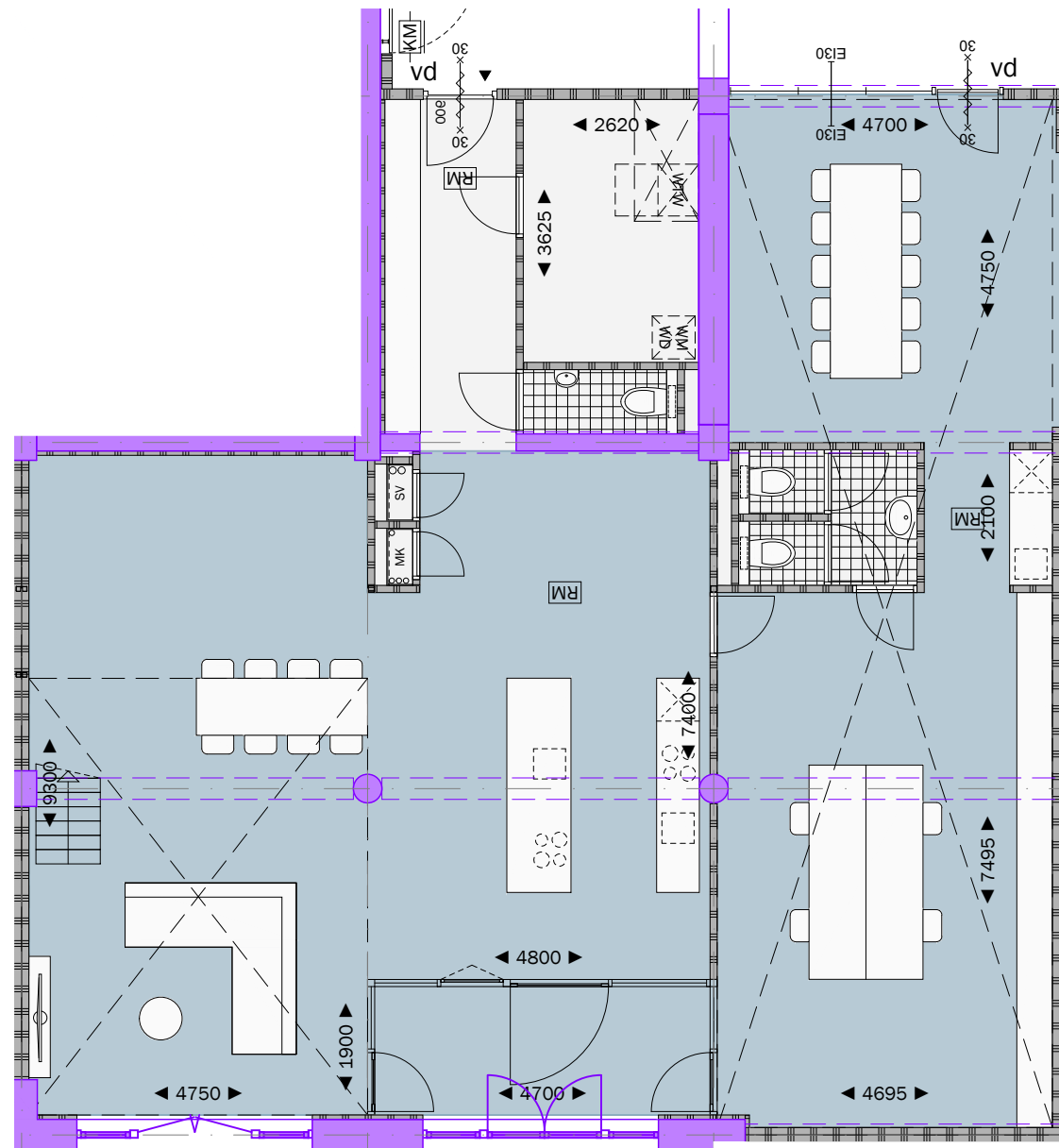


Woningtype E1
beganegrand - entresol

project: WEST507 Westzeedijk 507, Rotterdam	opdrachtgever: Waterford Investments & Vervat Vastgoed Rotterdam	onderwerp: Nieuwe situatie Woningtype E1	projectnummer: 16034	formaat: A3	schaal: 1:100	datum: 22.12.2017	tekeningnummer: D0.170
---	--	--	-------------------------	----------------	------------------	----------------------	---------------------------

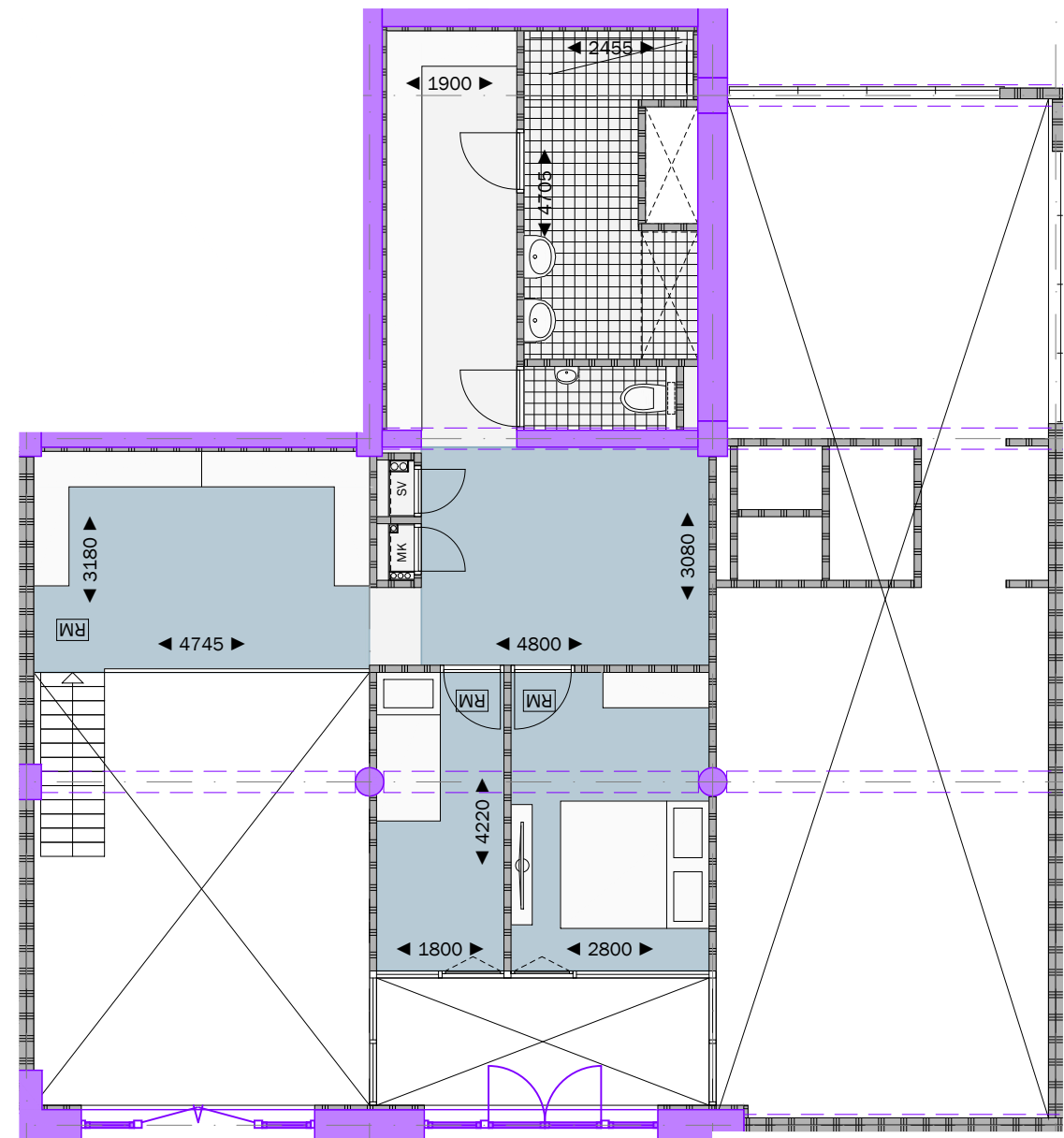


mei
 architects
 and planners
 info@mei-arch.eu
 www.mei-arch.eu
 +31104252222



$GBO = 178.5m^2$
 $VG = 150.3m^2$

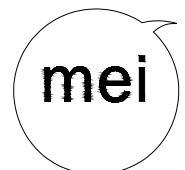
Woningtype F1
 begane grond - entreelaag



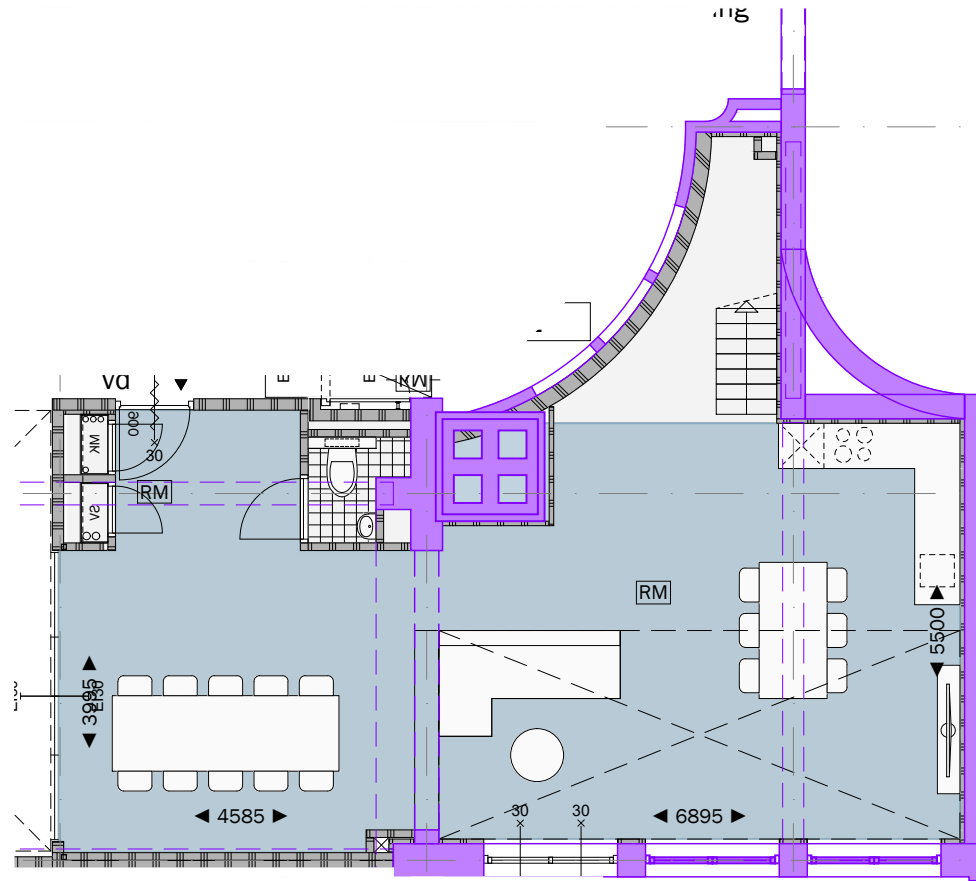
$GBO = 74.1m^2$
 $VG = 32.8m^2$

Woningtype F1
 begane grond - entresol

project: WEST507 Westzeedijk 507, Rotterdam	opdrachtgever: Waterford Investments & Vervat Vastgoed Rotterdam	onderwerp: Nieuwe situatie Woningtype F1	projectnummer: 16034	formaat: A3	schaal: 1:100	datum: 22.12.2017	tekeningnummer: DO.170
--	---	--	--------------------------------	-----------------------	-------------------------	-----------------------------	----------------------------------



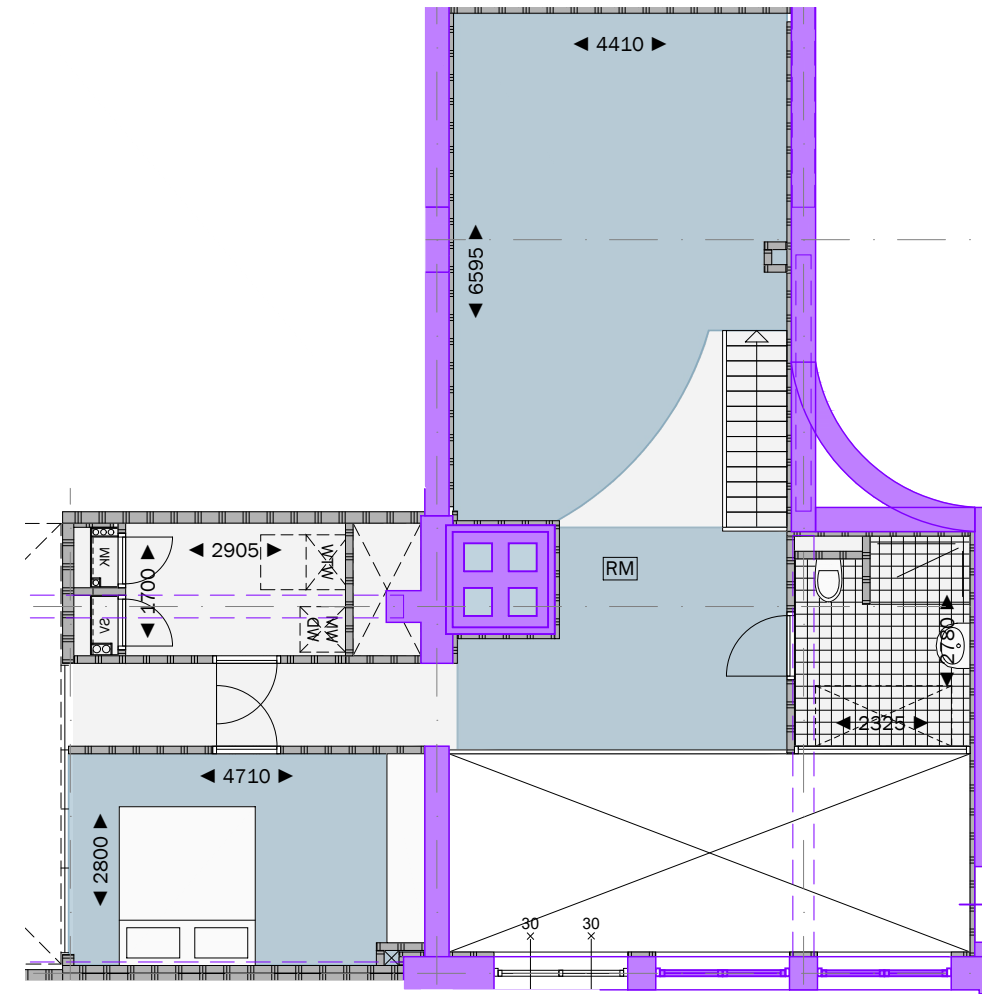
mei
 architects
 and planners
 info@mei-arch.eu
 www.mei-arch.eu
 +31104252222



GBO = 70.2m²
VG = 62.0m²

A⁺
- c

Woningtype G1
beganeground - entreelaag

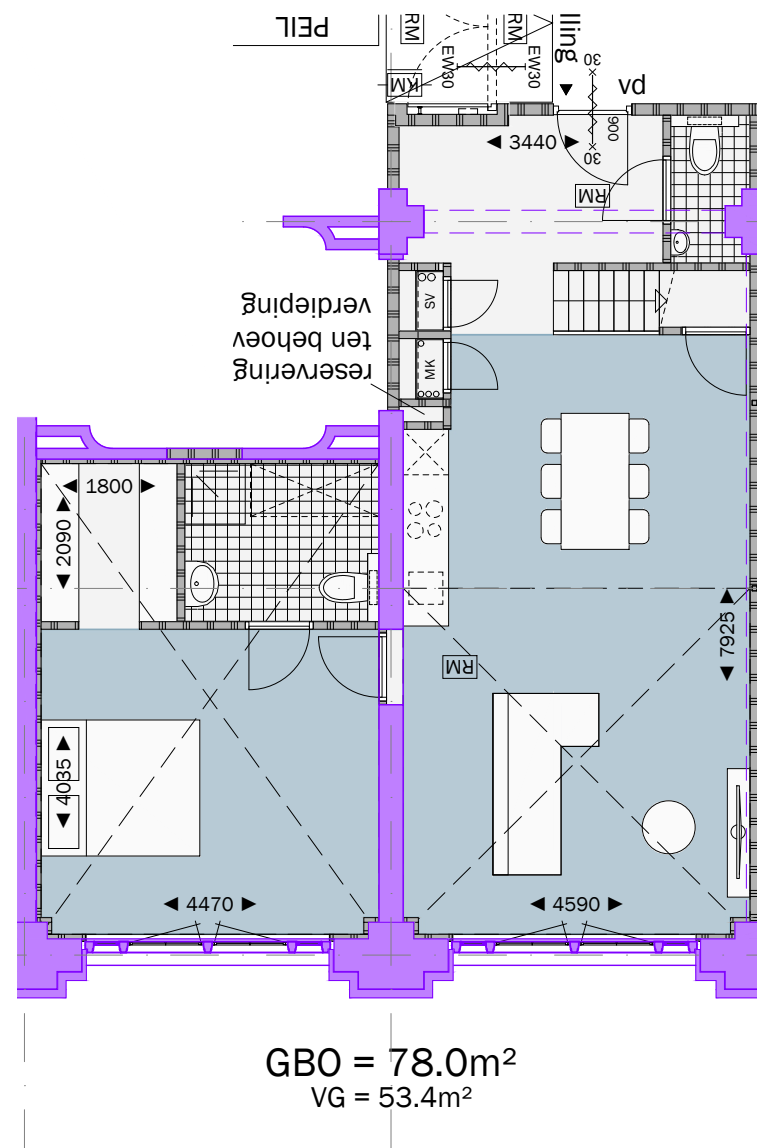


GBO = 75.4m²
VG = 51.2m²

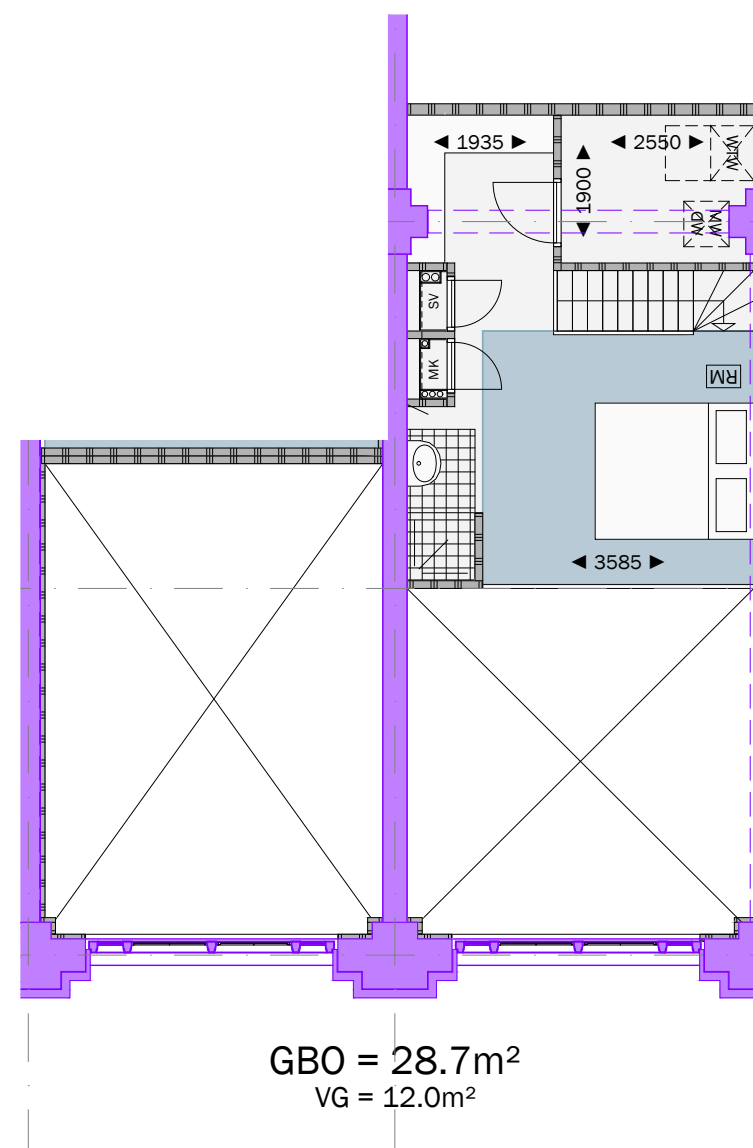
Woningtype G1
beganeground - entresol

project: WEST507 Westzeedijk 507, Rotterdam	opdrachtgever: Waterford Investments & Vervat Vastgoed Rotterdam	onderwerp: Nieuwe situatie Woningtype G1	projectnummer: 16034	formaat: A3	schaal: 1:100	datum: 22.12.2017	tekeningnummer: D0.170
---	--	--	-------------------------	----------------	------------------	----------------------	---------------------------



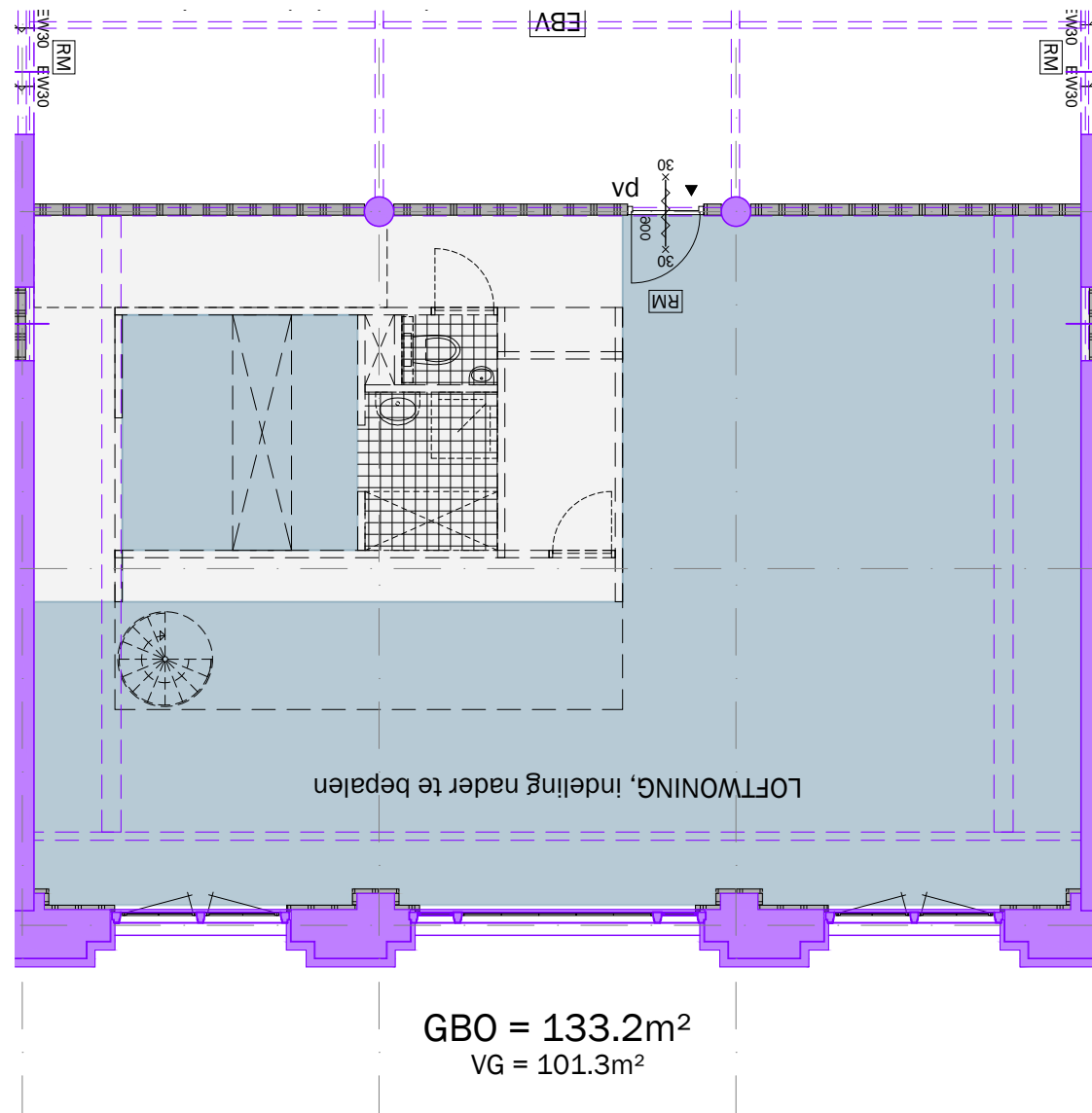


Woningtype H1
begane grond - entreelaag

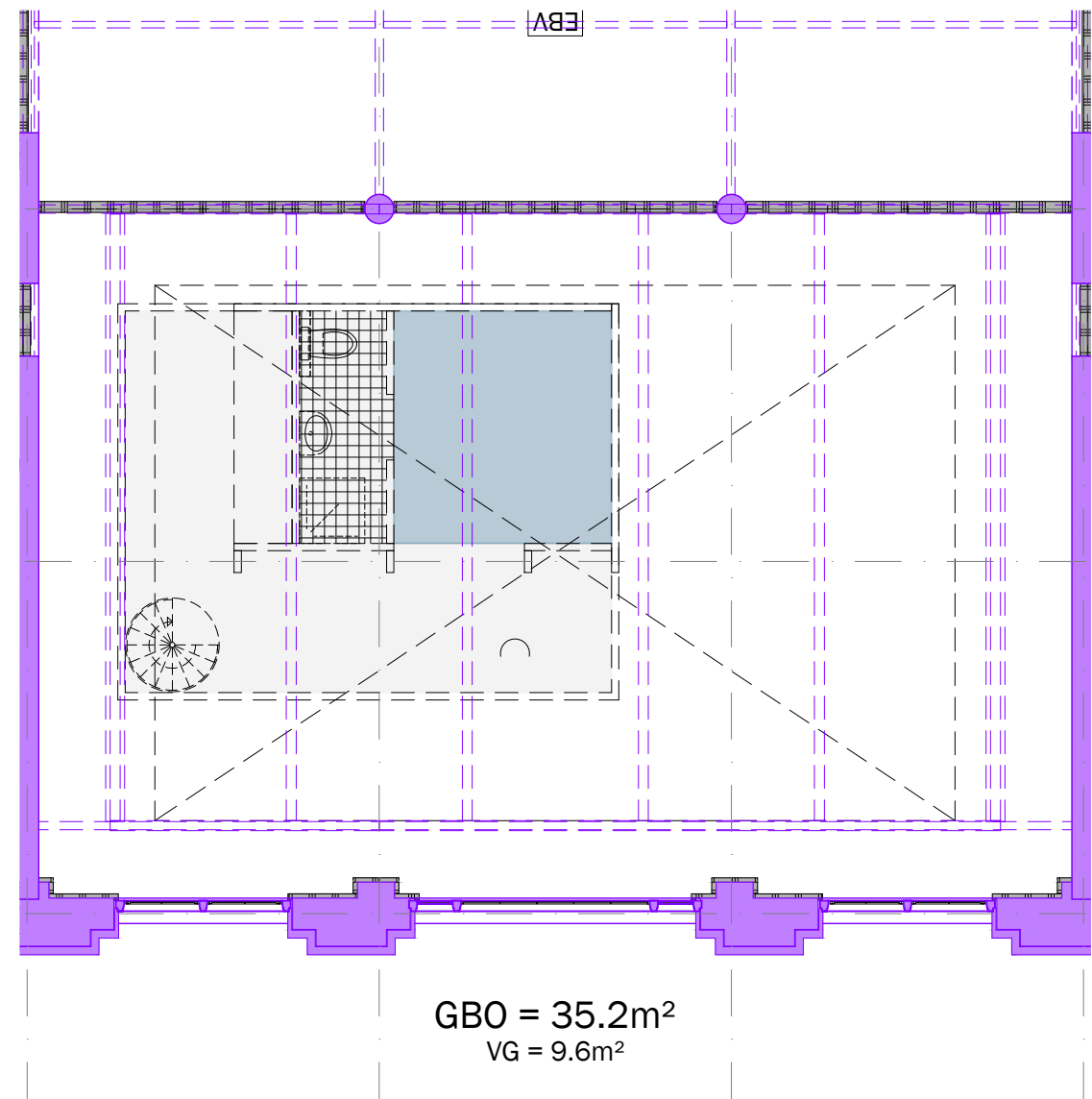


Woningtype H1
begane grond - entresol

project: WEST507 Westzeedijk 507, Rotterdam	opdrachtgever: Waterford Investments & Vervat Vastgoed Rotterdam	onderwerp: Nieuwe situatie Woningtype H1	projectnummer: 16034	formaat: A3	schaal: 1:100	datum: 22.12.2017	tekeningnummer: D0.170
---	--	--	-------------------------	----------------	------------------	----------------------	---------------------------

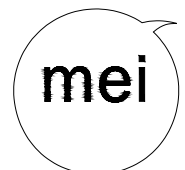


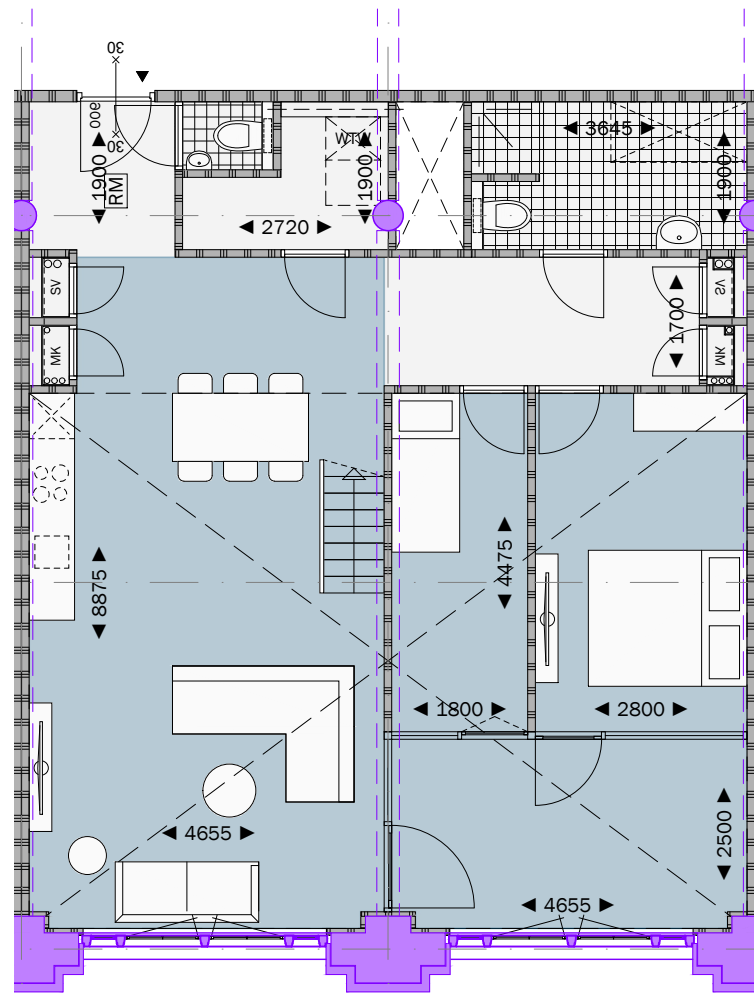
Woningtype J1
verdieping 1 - Julianazaal
Indeling i.o.m. koper



Woningtype J1
optie: verdieping - entresol - Julianazaal
Indeling i.o.m. koper

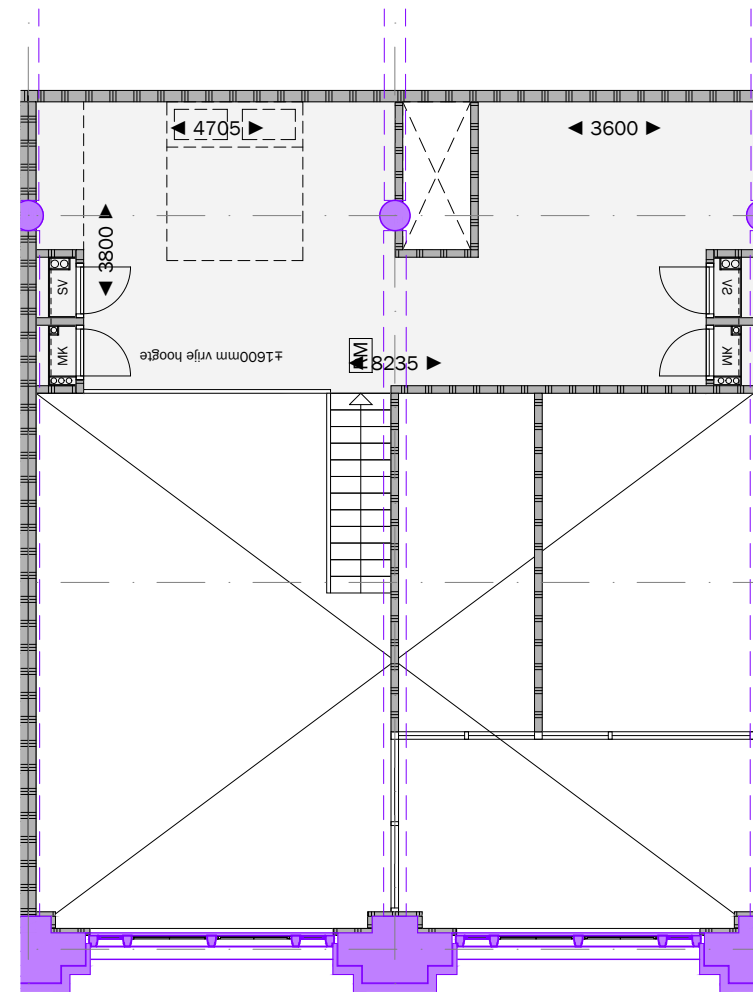
project: WEST507 Westzeedijk 507, Rotterdam	opdrachtgever: Waterford Investments & Vervat Vastgoed Rotterdam	onderwerp: Nieuwe situatie Woningtype J1	projectnummer: 16034	formaat: A3	schaal: 1:100	datum: 22.12.2017	tekeningnummer: D0.170
---	--	--	-------------------------	----------------	------------------	----------------------	---------------------------





GBO = 101.2m²
VG = 74.2m²

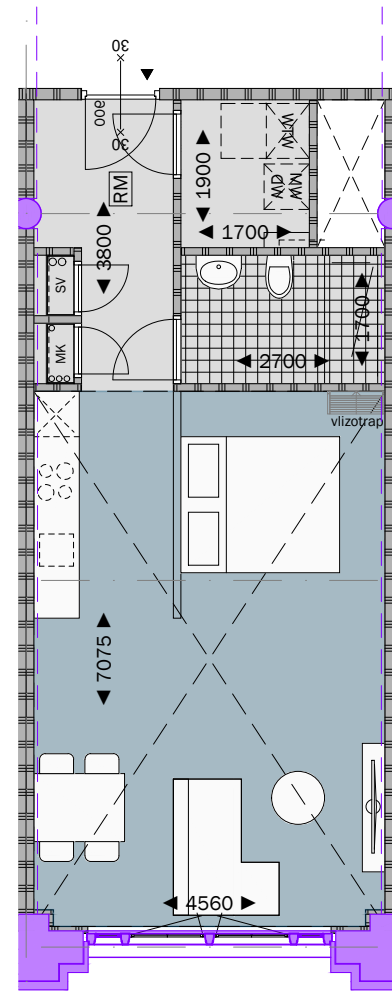
Woningtype A2
verdieping 1 & 2 - entreelaag



Woningtype A2
verdieping 1 & 2 - entresol

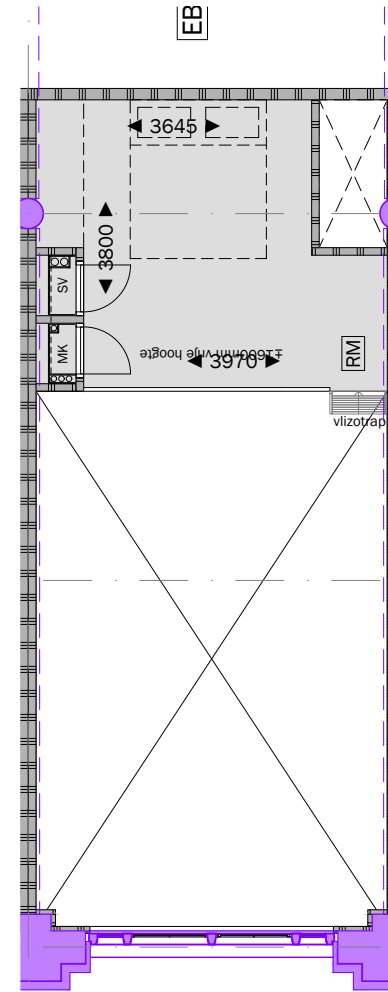
project: WEST507 Westzeedijk 507, Rotterdam	opdrachtgever: Waterford Investments & Vervat Vastgoed Rotterdam	onderwerp: Nieuwe situatie Woningtype A2	projectnummer: 16034	formaat: A3	schaal: 1:100	datum: 22.12.2017	tekeningnummer: D0.170
---	--	--	-------------------------	----------------	------------------	----------------------	---------------------------





GBO = 48.6m²
VG = 32.8m²

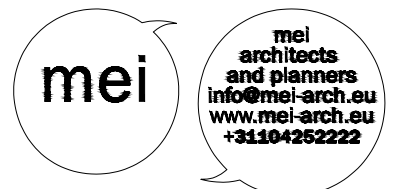
Woningtype B2
verdieping 1 & 2 - entreelaag

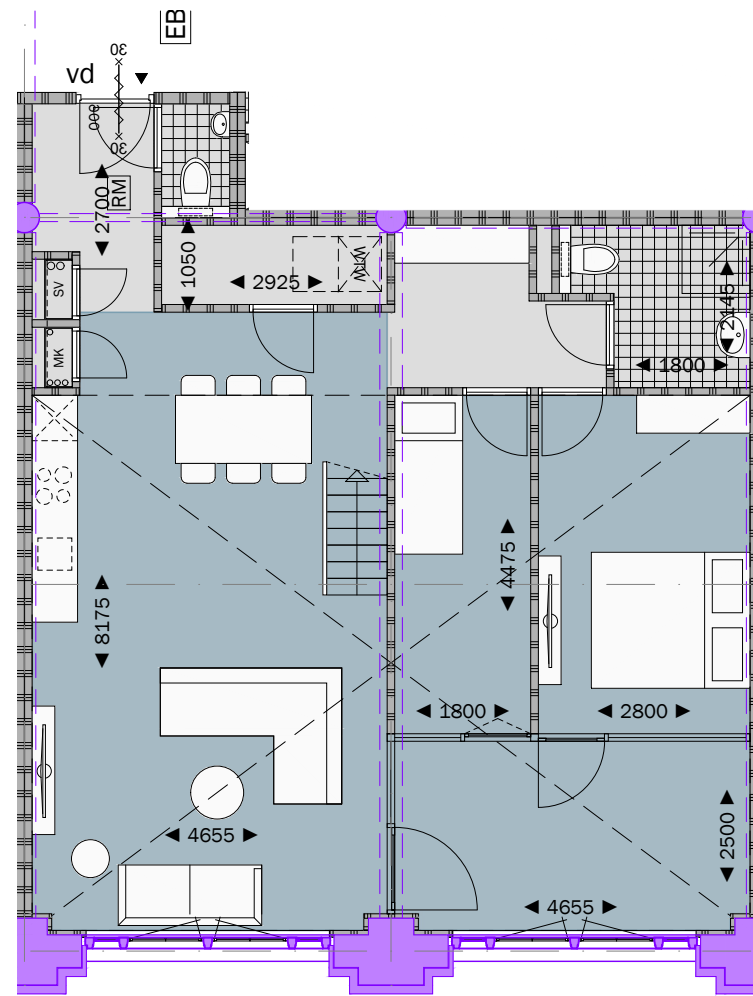


GBO = 15.9m²

Woningtype B2
optie: verdieping - entresol

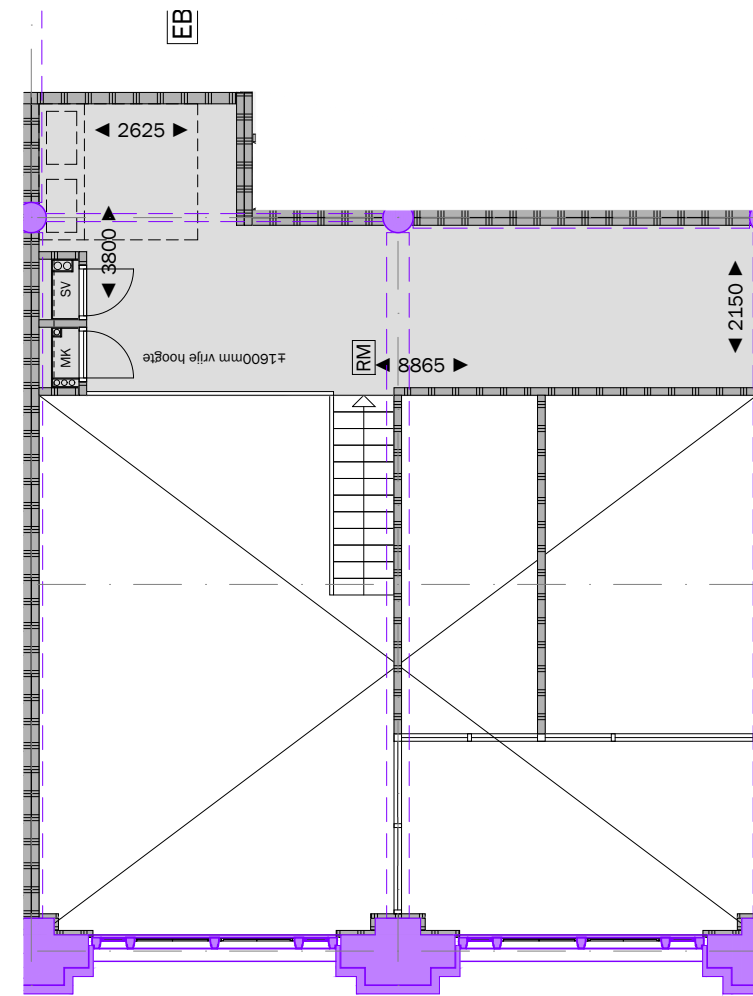
project: WEST507 Westzeedijk 507, Rotterdam	opdrachtgever: Waterford Investments & Vervat Vastgoed Rotterdam	onderwerp: Nieuwe situatie Woningtype B2	projectnummer: 16034	formaat: A3	schaal: 1:100	datum: 22.12.2017	tekeningnummer: DO.170
---	--	--	-------------------------	----------------	------------------	----------------------	---------------------------





GBO = 92.4m²
VG = 71.4m²

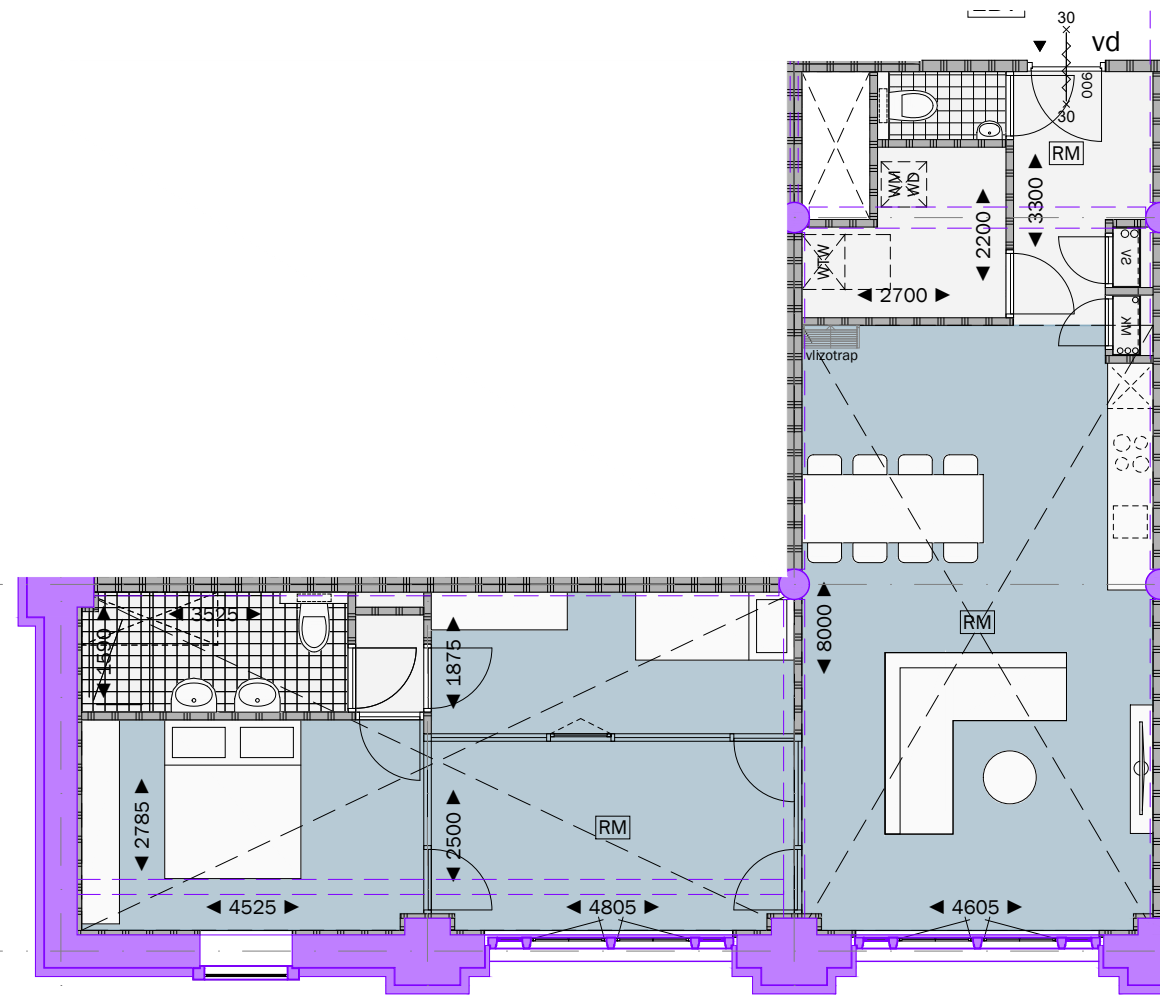
Woningtype C2
verdieping 1 & 2- entree laag



GBO = 25.6m²

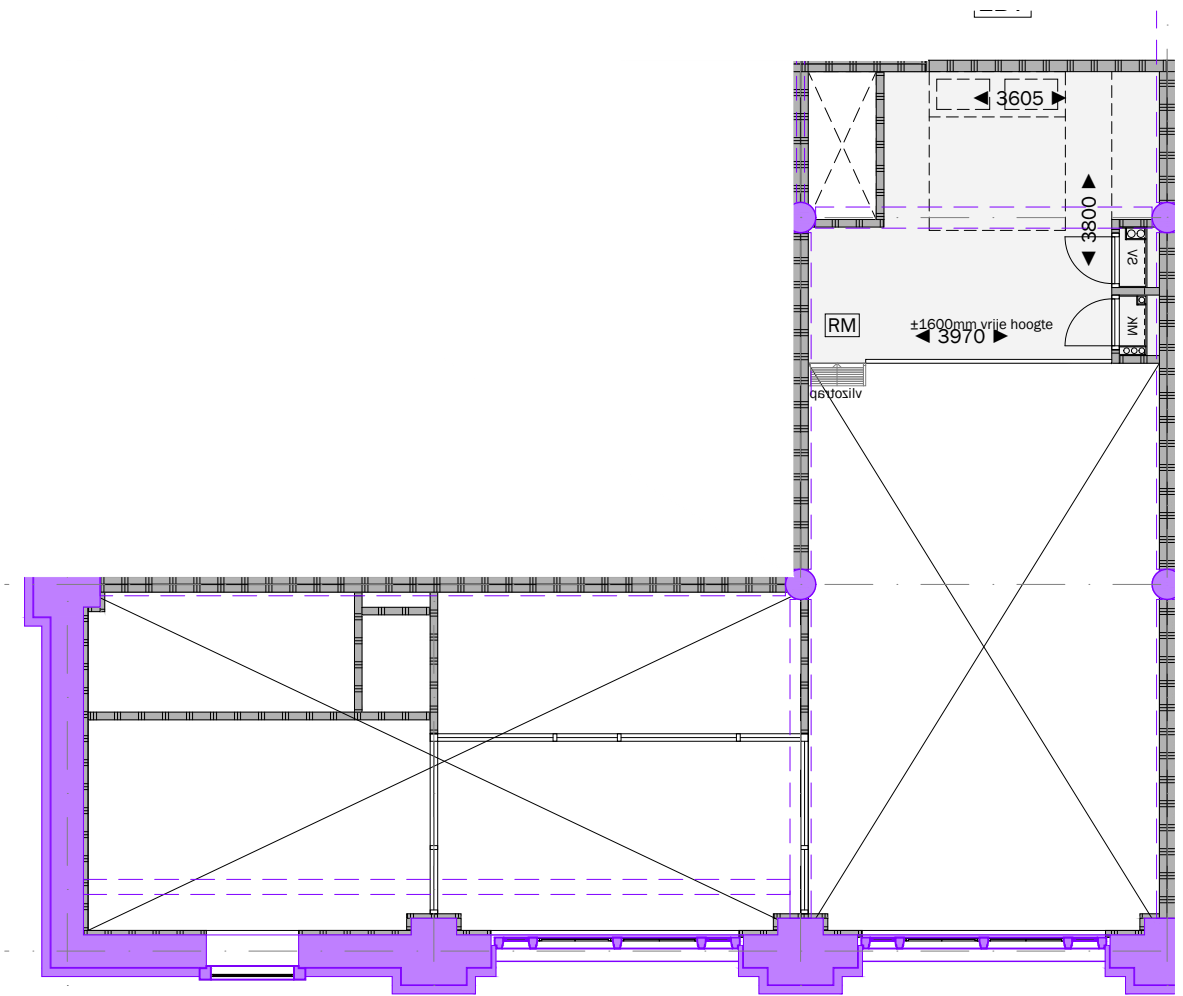
Woningtype C2
optie: verdieping - entresol

project: WEST507 Westzeedijk 507, Rotterdam	opdrachtgever: Waterford Investments & Vervat Vastgoed Rotterdam	onderwerp: Nieuwe situatie Woningtype C2	projectnummer: 16034	formaat: A3	schaal: 1:100	datum: 22.12.2017	tekeningnummer: DO.170
---	--	--	-------------------------	----------------	------------------	----------------------	---------------------------



GBO = 92.9m²
VG = 71.3m²

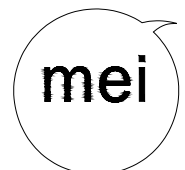
Woningtype D2
verdieping 1 & 2- entreelaag

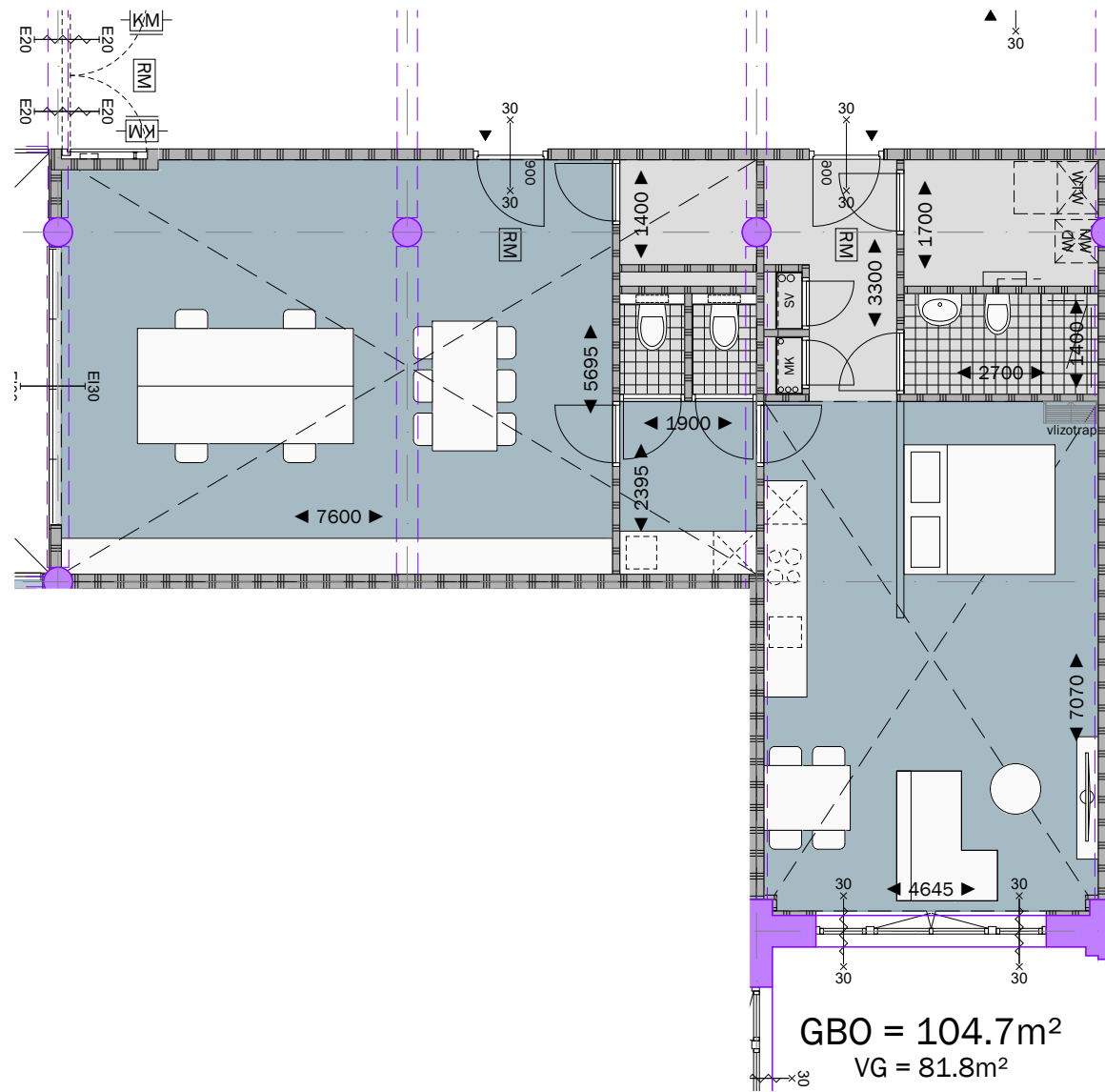


GBO = 15.9m²

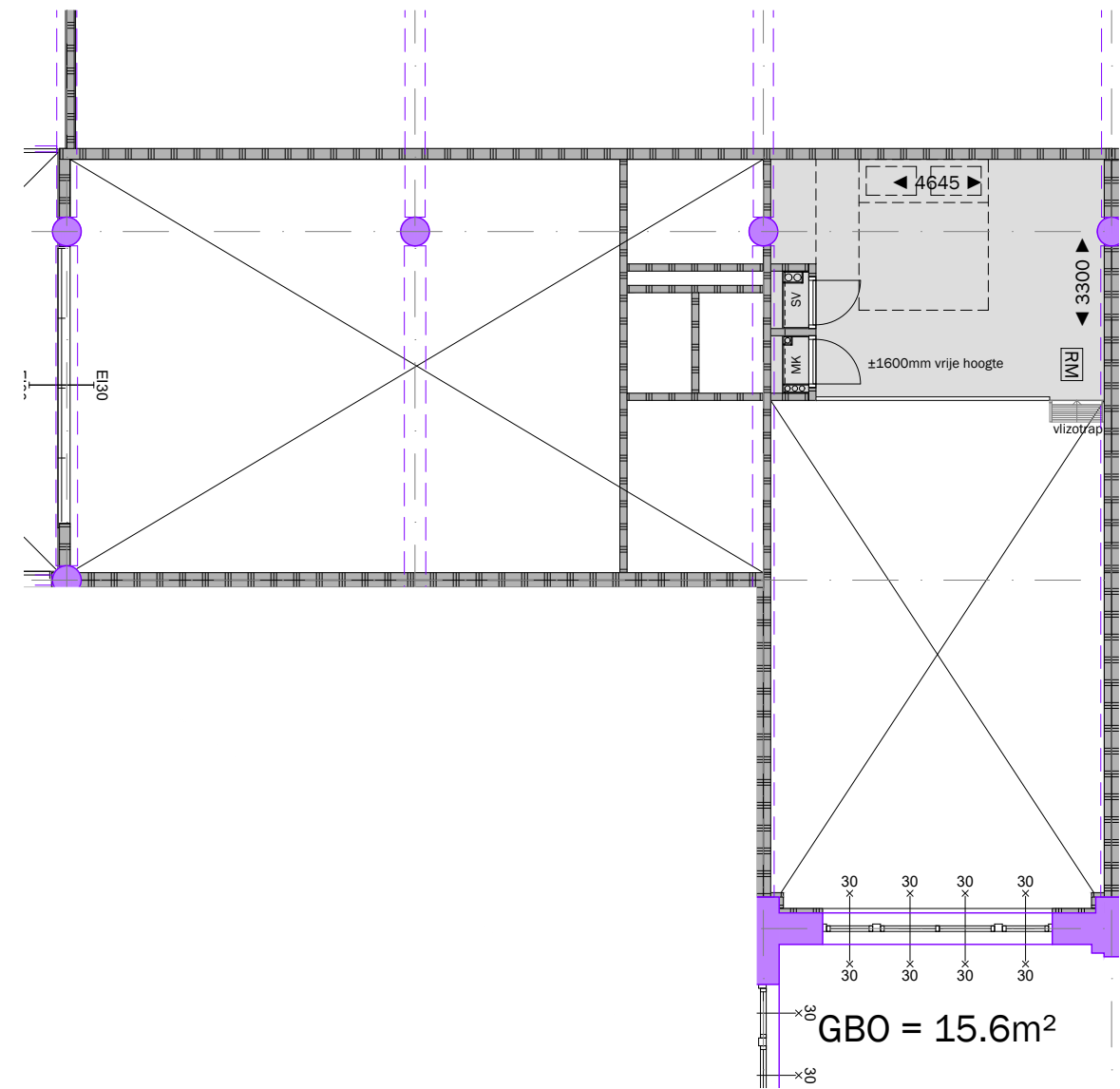
Woningtype D2
optie: verdieping - entresol

project: WEST507 Westzeedijk 507, Rotterdam	opdrachtgever: Waterford Investments & Vervat Vastgoed Rotterdam	onderwerp: Nieuwe situatie Woningtype D2	projectnummer: 16034	formaat: A3	schaal: 1:100	datum: 22.12.2017	tekeningnummer: DO.170
---	--	--	-------------------------	----------------	------------------	----------------------	---------------------------





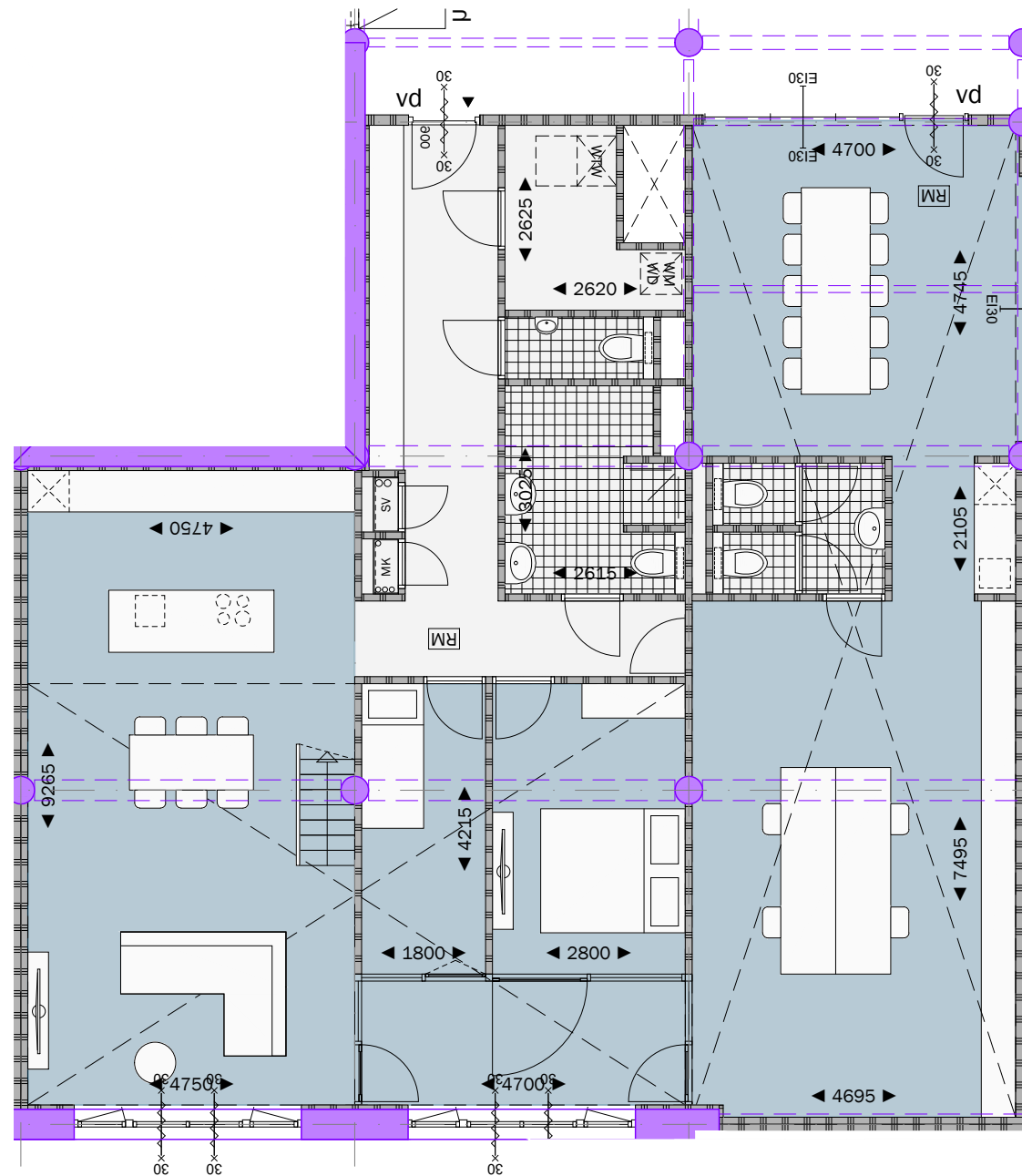
Woningtype E2
verdieping 1 & 2- entreelaag



Woningtype E2
optie: verdieping - entresol

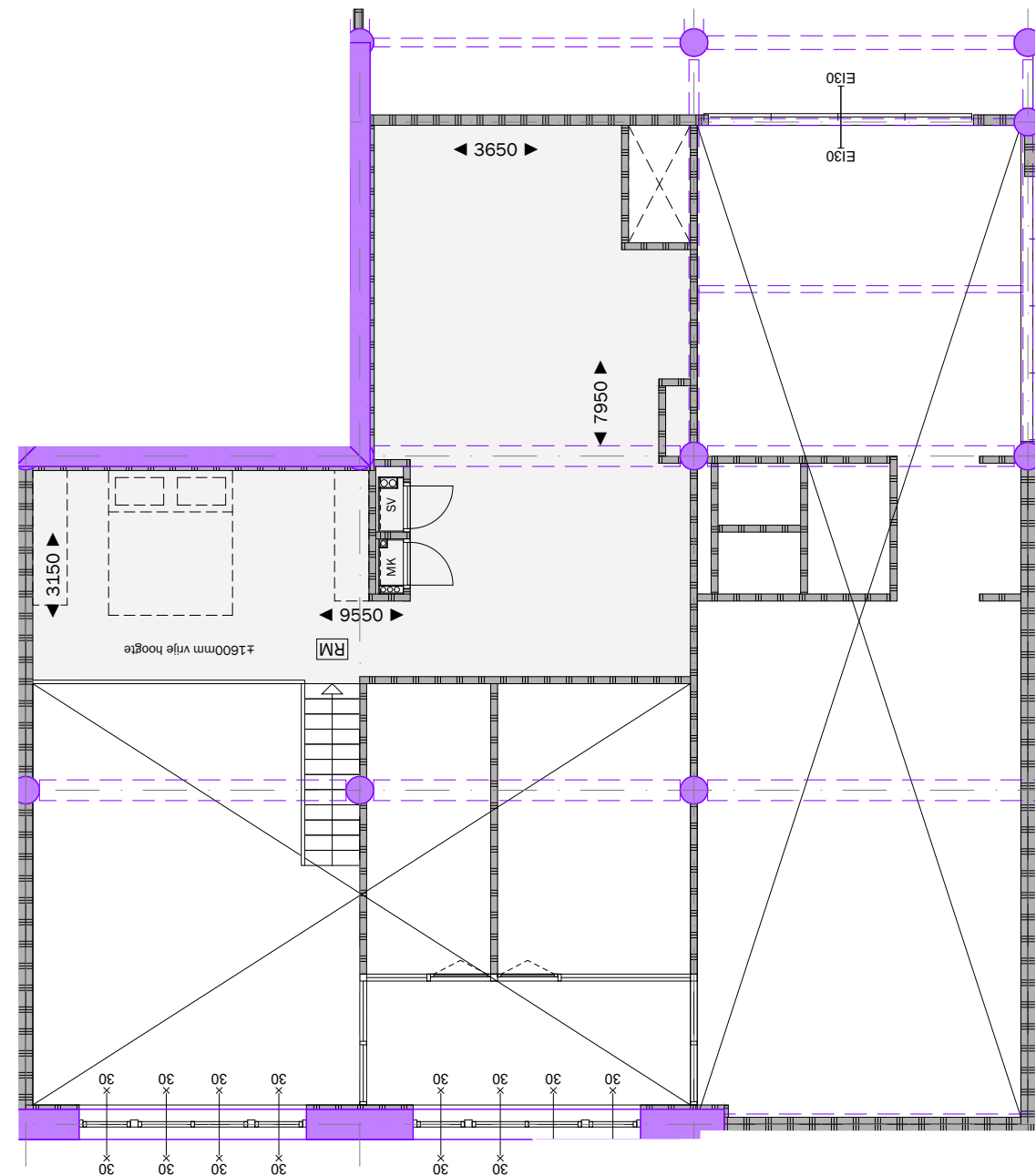
project: WEST507 Westzeedijk 507, Rotterdam	opdrachtgever: Waterford Investments & Vervat Vastgoed Rotterdam	onderwerp: Nieuwe situatie Woningtype E2	projectnummer: 16034	formaat: A3	schaal: 1:100	datum: 22.12.2017	tekeningnummer: D0.170
---	--	--	-------------------------	----------------	------------------	----------------------	---------------------------





GBO = 177.7m²
 VG = 136.3m²

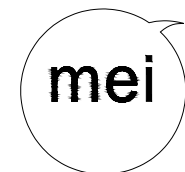
Woningtype F2
 verdieping 1 & 2- entreelaag



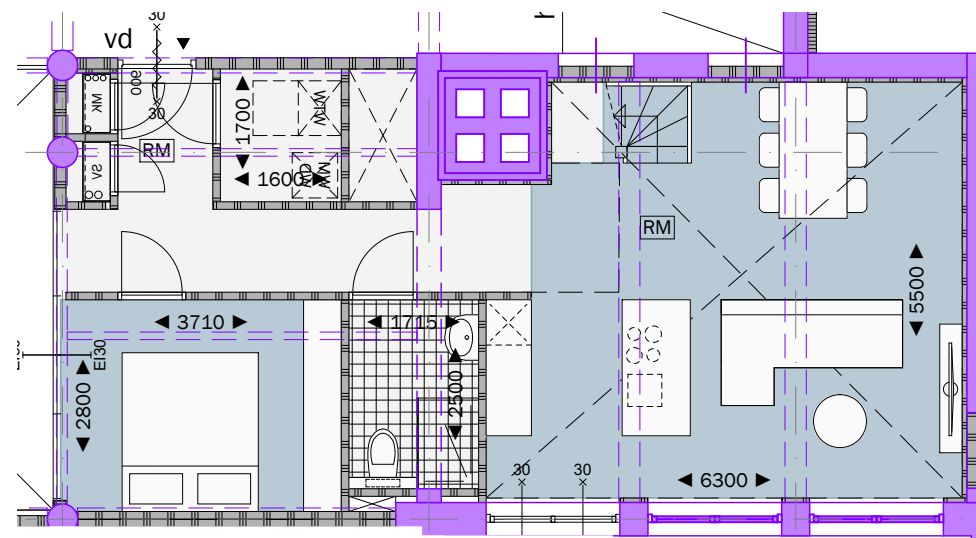
GBO = 50.7m²

Woningtype F2
 optie: verdieping - entresol

project: WEST507 Westzeedijk 507, Rotterdam	opdrachtgever: Waterford Investments & Vervat Vastgoed Rotterdam	onderwerp: Nieuwe situatie Woningtype F2	projectnummer: 16034	formaat: A3	schaal: 1:100	datum: 22.12.2017	tekeningnummer: D0.170
---	--	--	-------------------------	----------------	------------------	----------------------	---------------------------

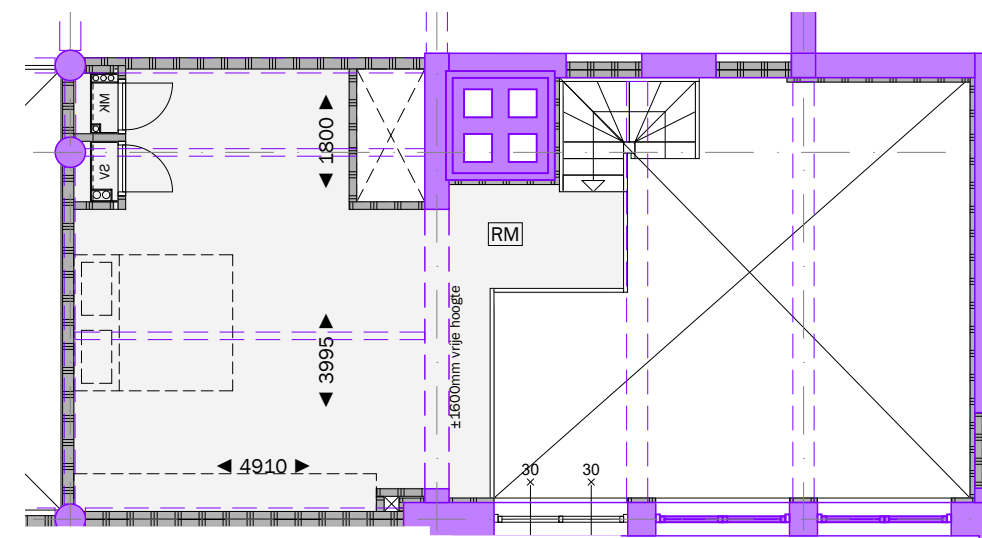


mei
 architects
 and planners
 info@mei-arch.eu
 www.mei-arch.eu
 +31104252222



GBO = 64.2m²
VG = 42.3m²

Woningtype G2
verdieping 1 & 2- entreelaag

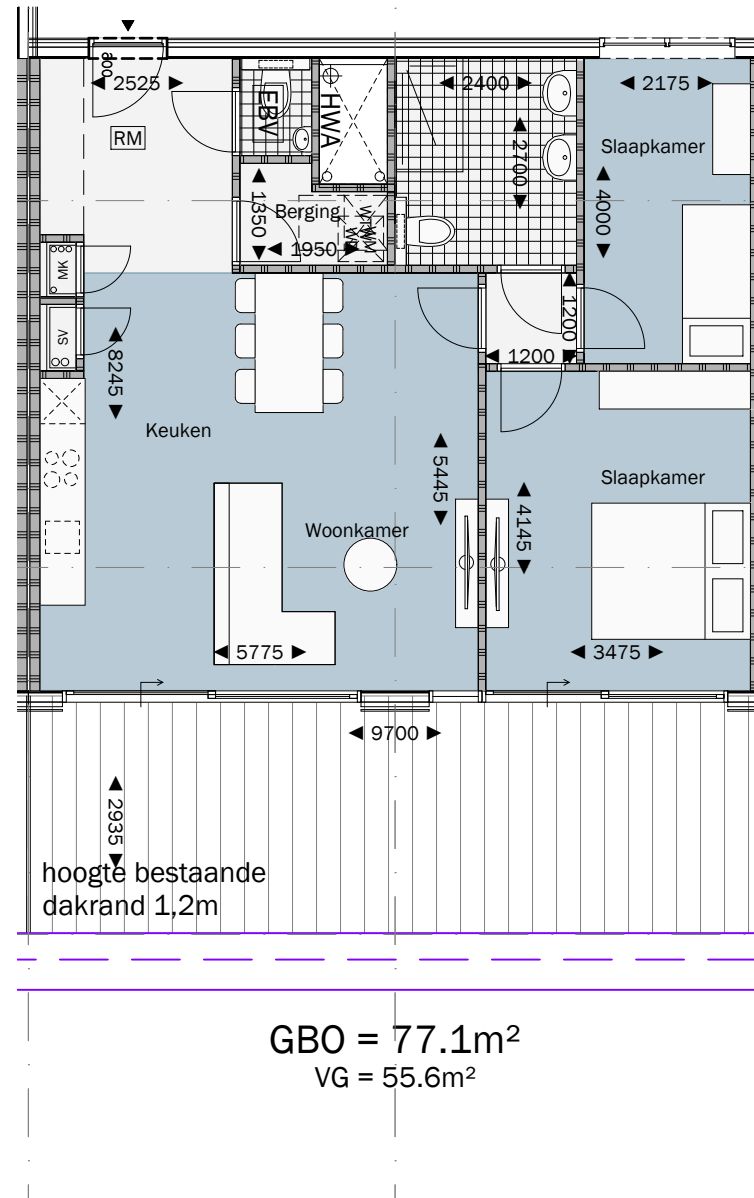


GBO = 31.2m²

Woningtype G2
optie: verdieping - entresol

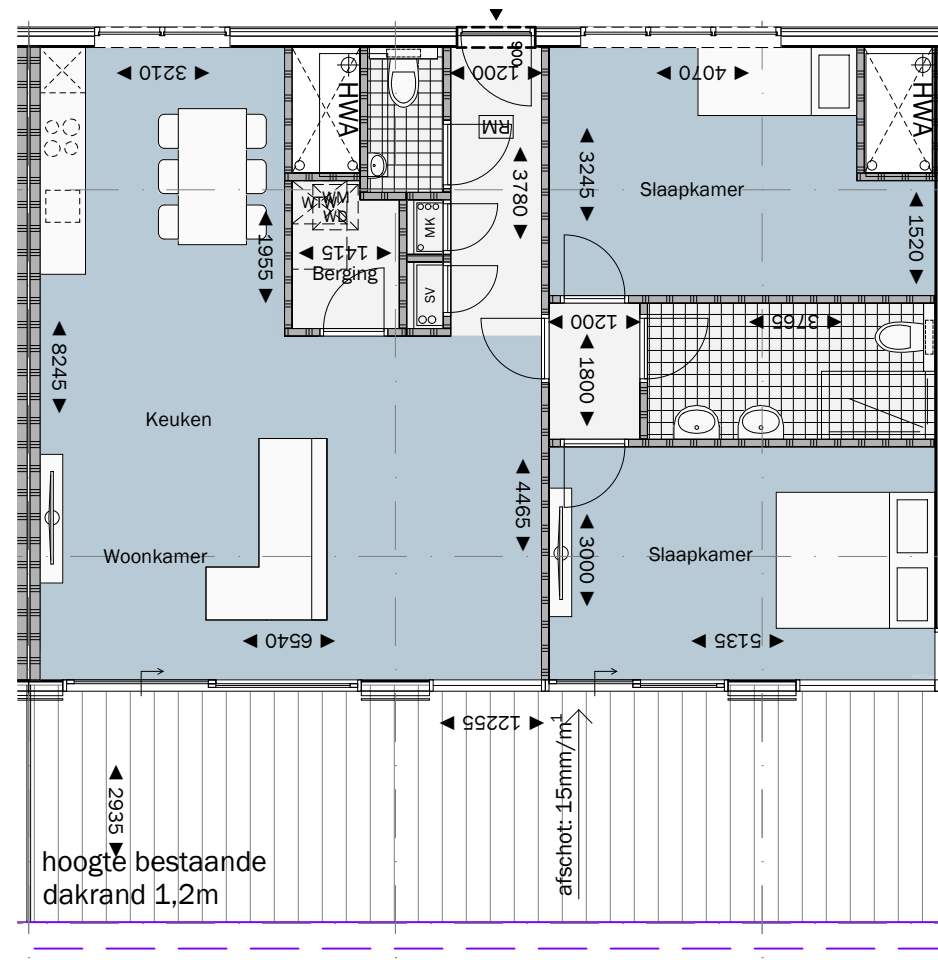
project: WEST507 Westzeedijk 507, Rotterdam	opdrachtgever: Waterford Investments & Vervat Vastgoed Rotterdam	onderwerp: Nieuwe situatie Woningtype G2	projectnummer: 16034	formaat: A3	schaal: 1:100	datum: 22.12.2017	tekeningnummer: D0.170
---	--	--	-------------------------	----------------	------------------	----------------------	---------------------------





Woningtype P1
3e verdieping

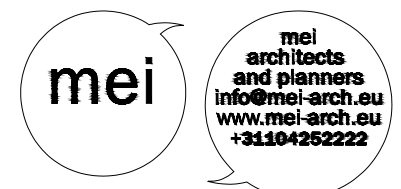
project: WEST507 Westzeedijk 507, Rotterdam	opdrachtgever: Waterford Investments & Vervat Vastgoed Rotterdam	onderwerp: Nieuwe situatie Woningtype P1	projectnummer: 16034	formaat: A3	schaal: 1:100	datum: 22.12.2017	tekeningnummer: DO.170
---	--	--	-------------------------	----------------	------------------	----------------------	---------------------------

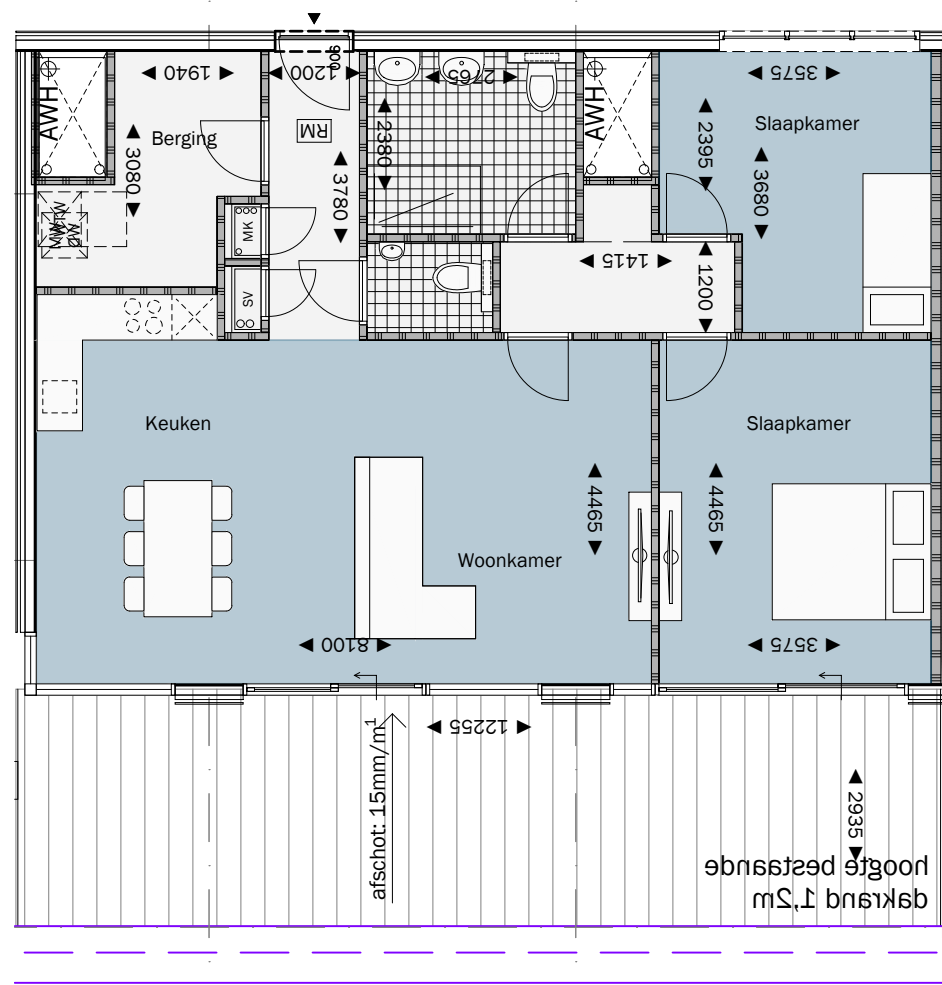


GBO = 95.9m²
73.4m²

Woningtype Q1
3e verdieping

project: WEST507 Westzeedijk 507, Rotterdam	opdrachtgever: Waterford Investments & Vervat Vastgoed Rotterdam	onderwerp: Nieuwe situatie Woningtype Q1	projectnummer: 16034	formaat: A3	schaal: 1:100	datum: 22.12.2017	tekeningnummer: DO.170
---	--	--	-------------------------	----------------	------------------	----------------------	---------------------------

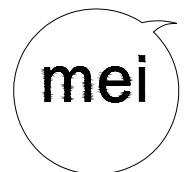


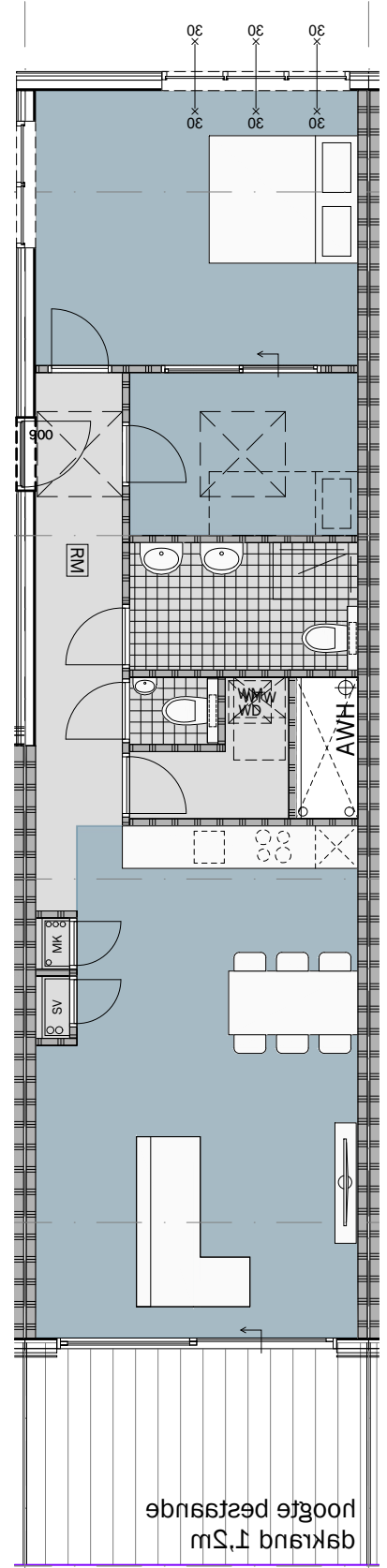


67.4m²
GBO = 62.9m²

Woningtype Q2
3e verdieping

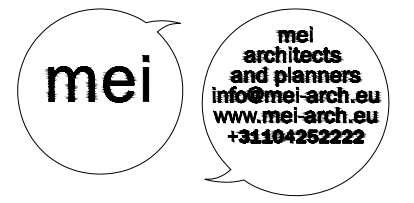
project: WEST507 Westzeedijk 507, Rotterdam	opdrachtgever: Waterford Investments & Vervat Vastgoed Rotterdam	onderwerp: Nieuwe situatie Woningtype Q2	projectnummer: 16034	formaat: A3	schaal: 1:100	datum: 22.12.2017	tekeningnummer: D0.170
---	--	--	-------------------------	----------------	------------------	----------------------	---------------------------

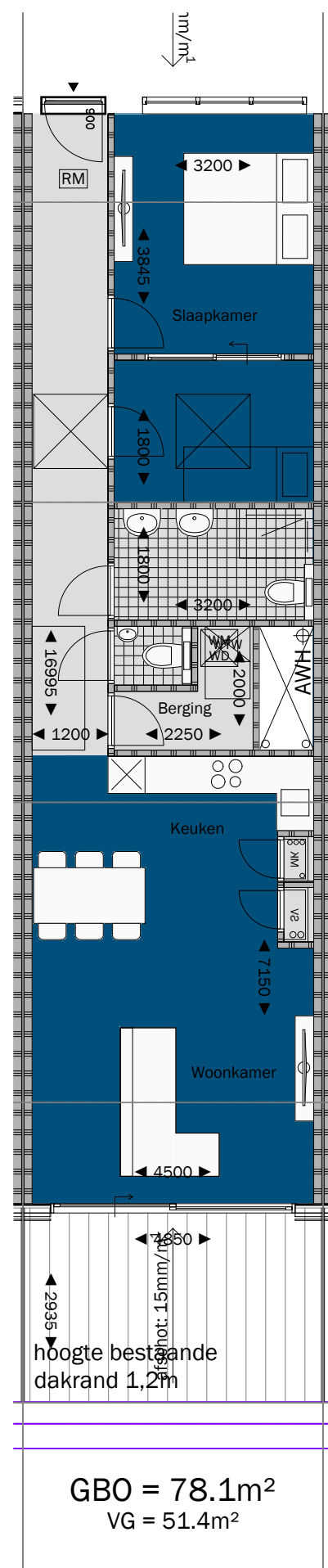




Woningtype R1
 3e verdieping
 VG = 29.2m²
 GBO = 78.4m²

project: WEST507 Westzeedijk 507, Rotterdam	opdrachtgever: Waterford Investments & Vervat Vastgoed Rotterdam	onderwerp: Nieuwe situatie Woningtype R1	projectnummer: 16034	formaat: A3	schaal: 1:100	datum: 22.12.2017	tekeningnummer: D0.170
---	--	--	-------------------------	----------------	------------------	----------------------	---------------------------

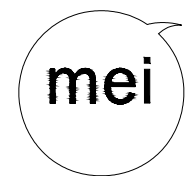


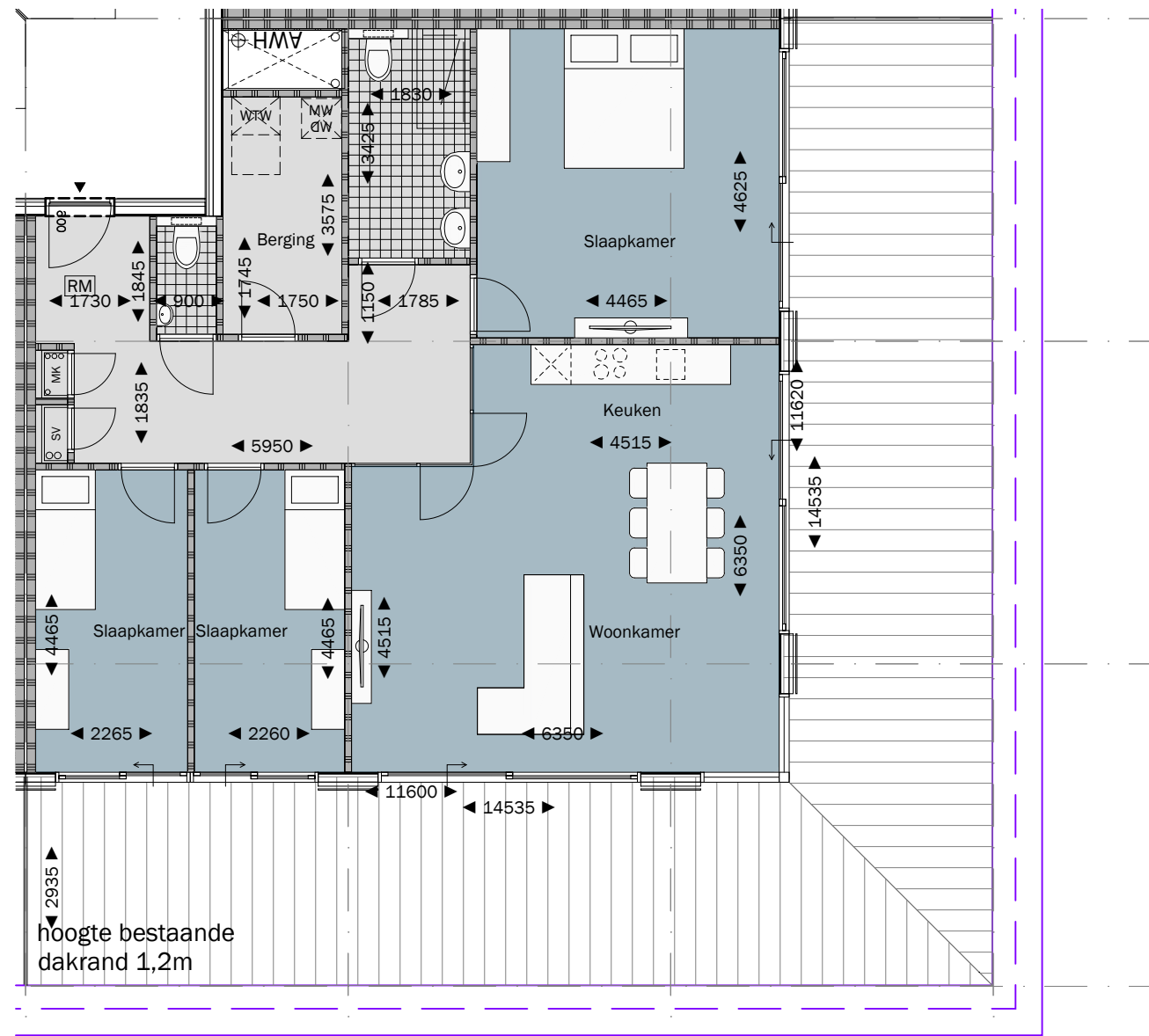


Woningtype R2
3e verdieping

GBO = 78.1m²
VG = 51.4m²

project: WEST507 Westzeedijk 507, Rotterdam	opdrachtgever: Waterford Investments & Vervat Vastgoed Rotterdam	onderwerp: Nieuwe situatie Woningtype R2	projectnummer: 16034	formaat: A3	schaal: 1:100	datum: 22.12.2017	tekeningnummer: DO.170
--	---	---	--------------------------------	-----------------------	-------------------------	-----------------------------	----------------------------------

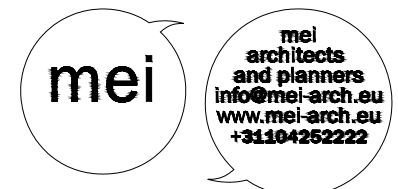


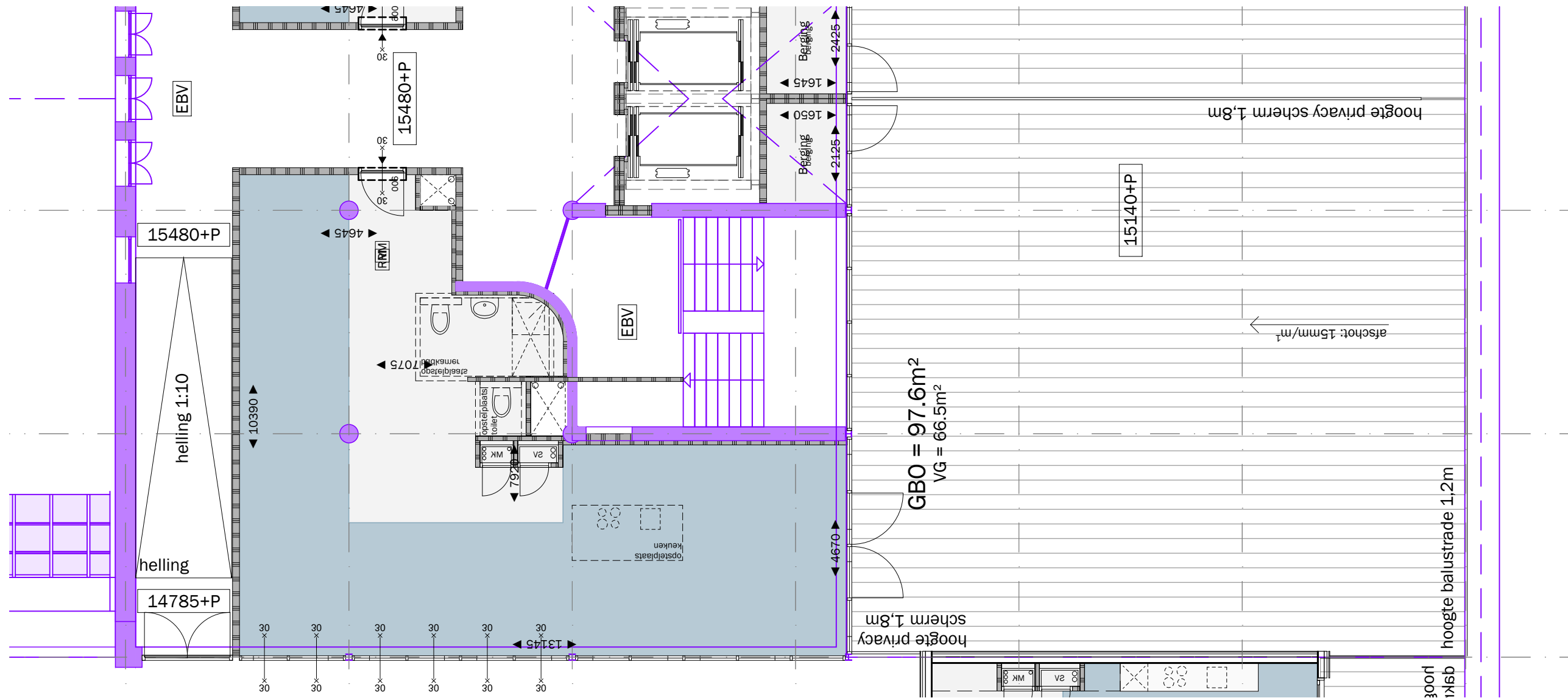


GBO = 115.4m²
VG = 81.2m²

Woningtype S1
3e verdieping

project: WEST507 Westzeedijk 507, Rotterdam	opdrachtgever: Waterford Investments & Vervat Vastgoed Rotterdam	onderwerp: Nieuwe situatie Woningtype S1	projectnummer: 16034	formaat: A3	schaal: 1:100	datum: 22.12.2017	tekeningnummer: DO.170
---	--	--	-------------------------	----------------	------------------	----------------------	---------------------------





Woningtype Z1
3e verdieping

project: WEST507 Westzeedijk 507, Rotterdam	opdrachtgever: Waterford Investments & Vervat Vastgoed Rotterdam	onderwerp: Nieuwe situatie Woningtype Z1	projectnummer: 16034	formaat: A3	schaal: 1:100	datum: 22.12.2017	tekeningnummer: D0.170
---	--	--	-------------------------	----------------	------------------	----------------------	---------------------------



