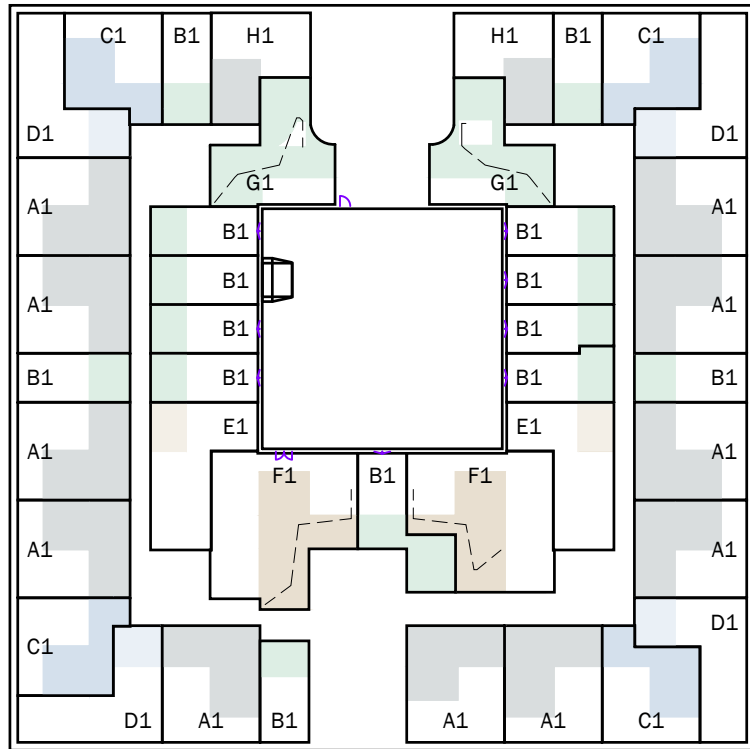
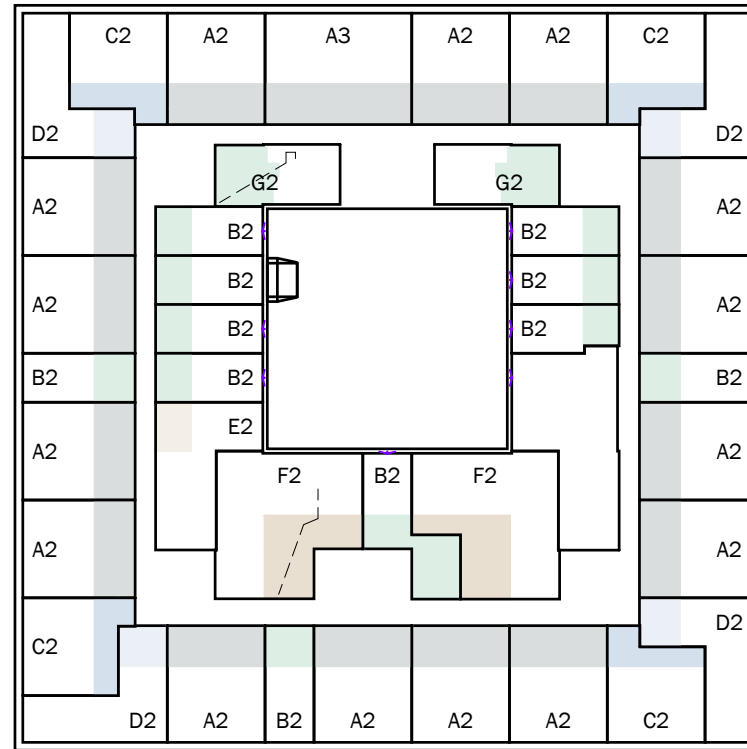




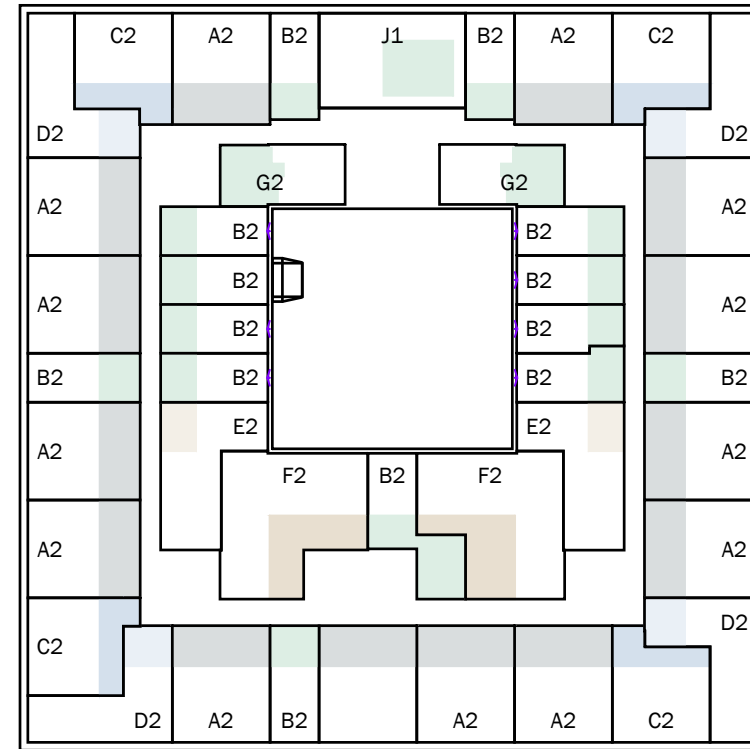
project: WEST507 Rotterdam	projectnummer: 16034
opdrachtgever: Waterford Investments & Vervat Vastgoed Rotterdam	schaal: 1:100
onderwerp: Definitief ontwerp Woningtypes	datum: 05.10.2017
wijzigingen: a 22.12.2017 d g b e h c f i	formaat: A3
	tekeningnummer: DO-170



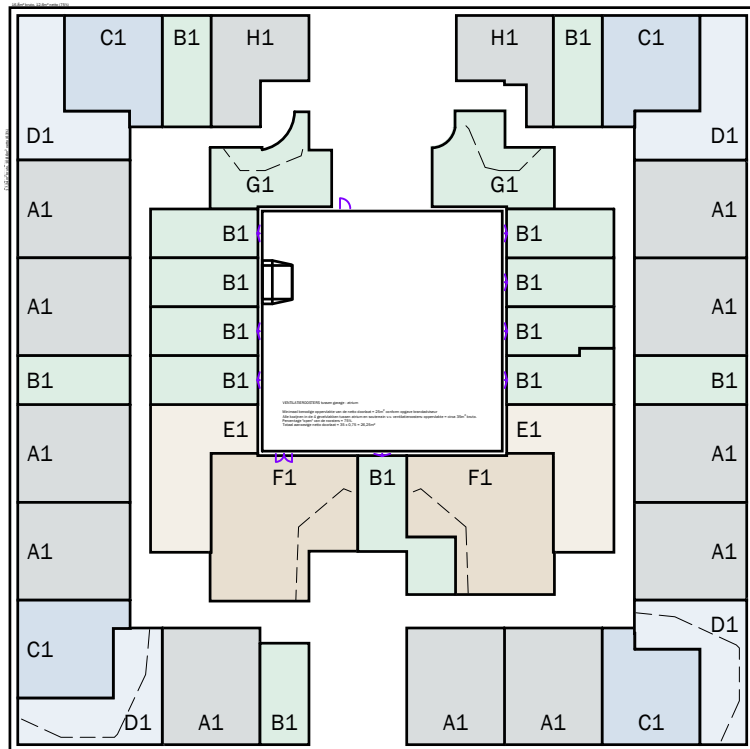
beganegrond - entresol



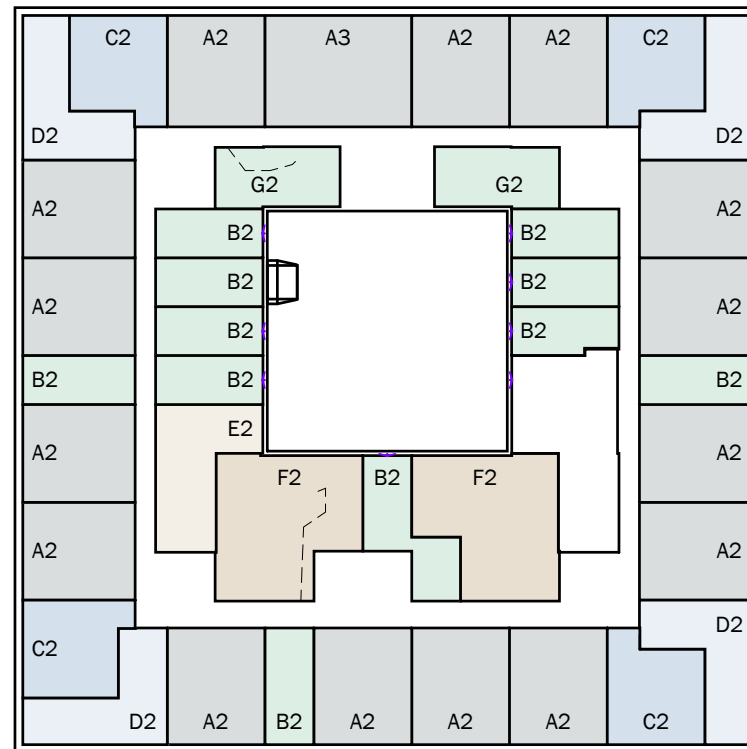
verdieping 1 - entresol



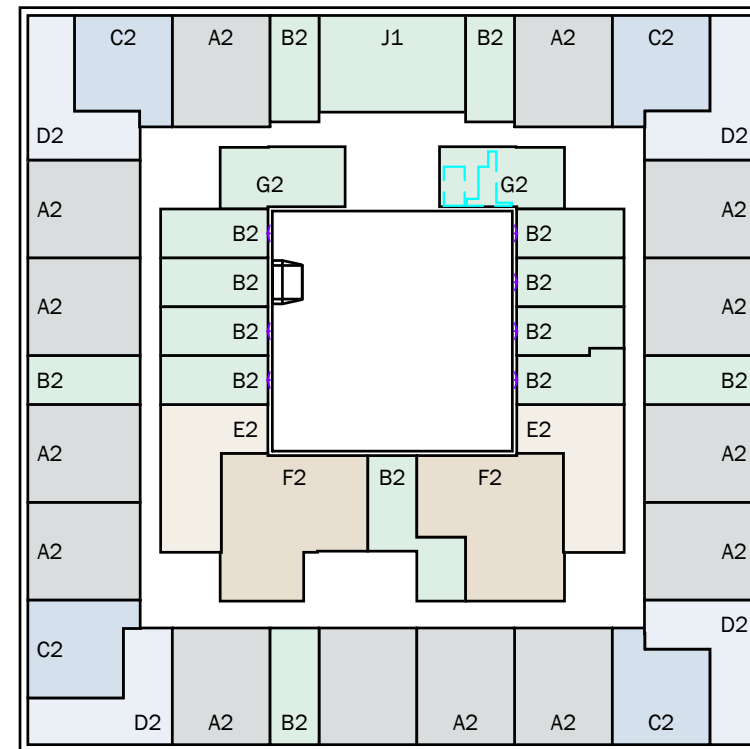
verdieping 2 - entresol



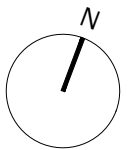
beganegrond - entree laag



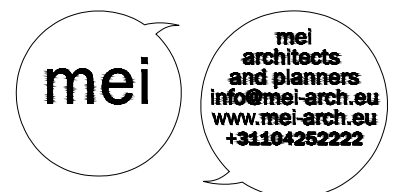
verdieping 1 - entree laag

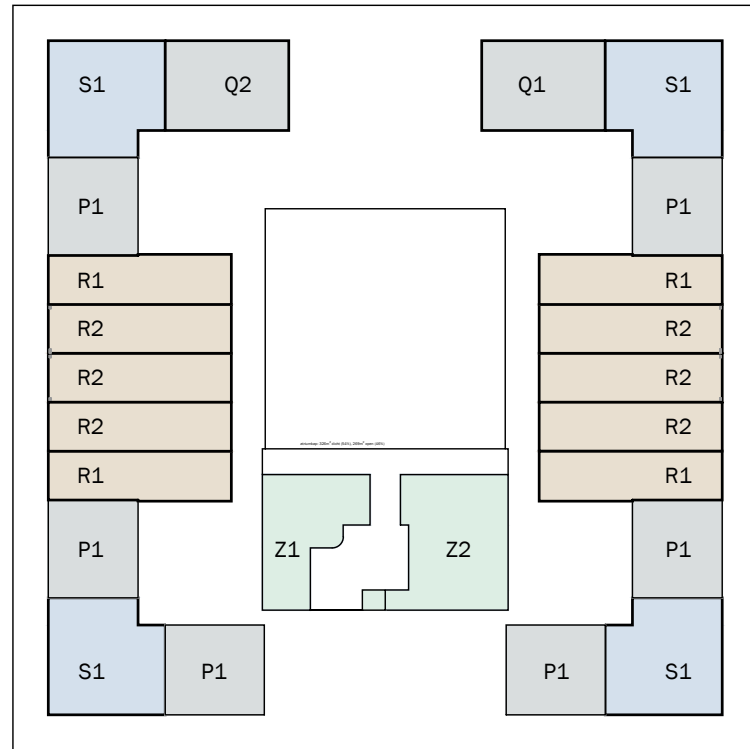


verdieping 2 - entree laag

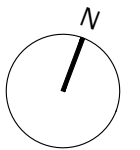


project: WEST507 Westzeedijk 507, Rotterdam	opdrachtgever: Waterford Investments & Vervat Vastgoed Rotterdam	onderwerp: Nieuwe situatie Overzicht woningtypen	projectnummer: 16034	formaat: A3	schaal: 1:750	datum: 22.12.2017	tekeningnummer: DO.170
---	--	--	-------------------------	----------------	------------------	----------------------	---------------------------

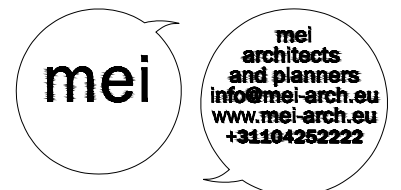


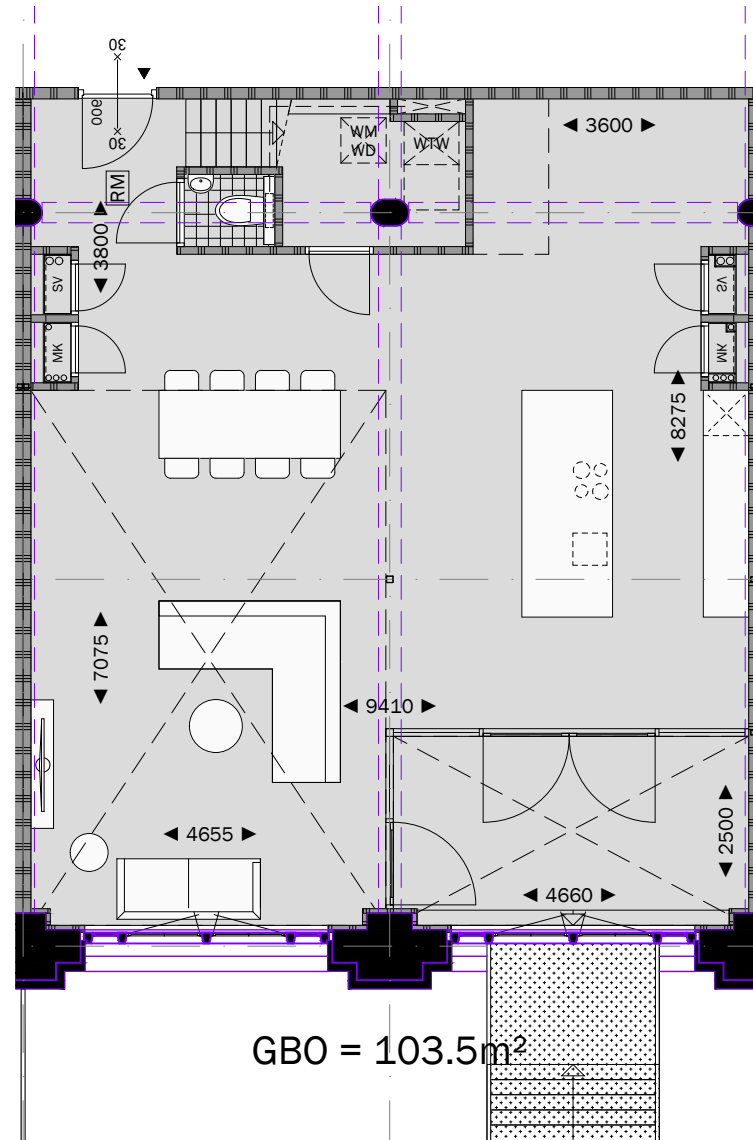


verdieping 3

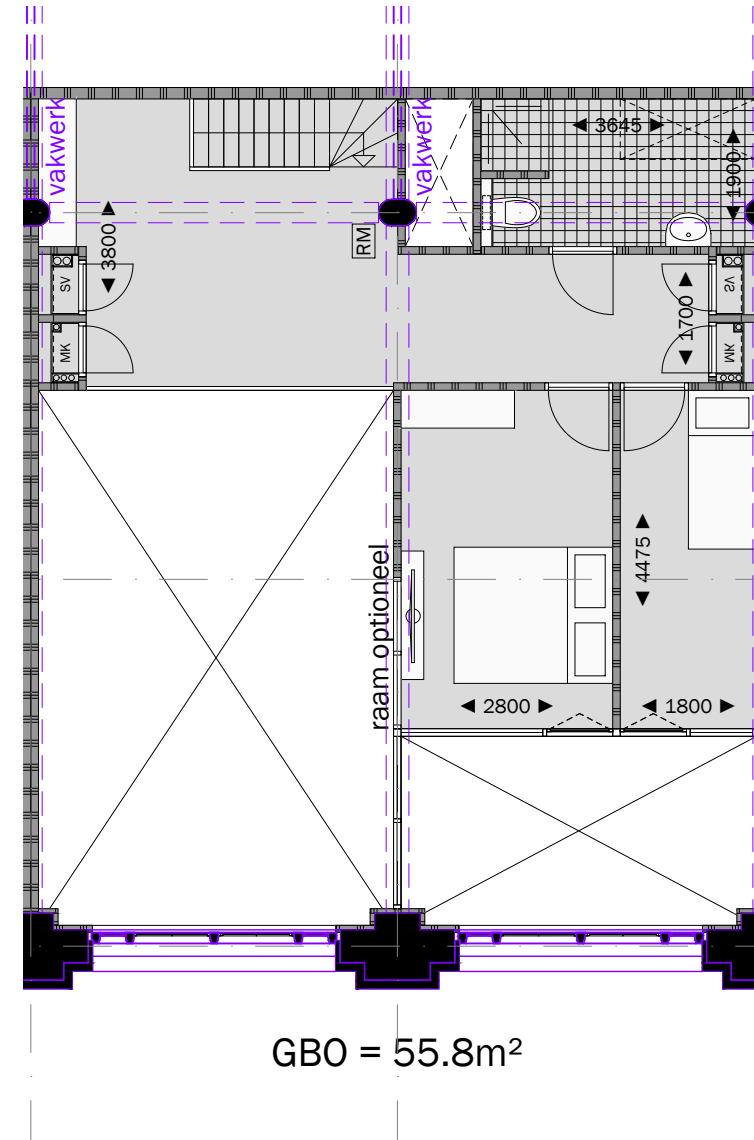


project: WEST507 Westzeedijk 507, Rotterdam	opdrachtgever: Waterford Investments & Vervat Vastgoed Rotterdam	onderwerp: Nieuwe situatie Overzicht woningtypen	projectnummer: 16034	formaat: A3	schaal: 1:750	datum: 22.12.2017	tekeningnummer: D0.170
---	--	--	-------------------------	----------------	------------------	----------------------	---------------------------



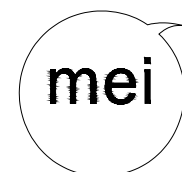


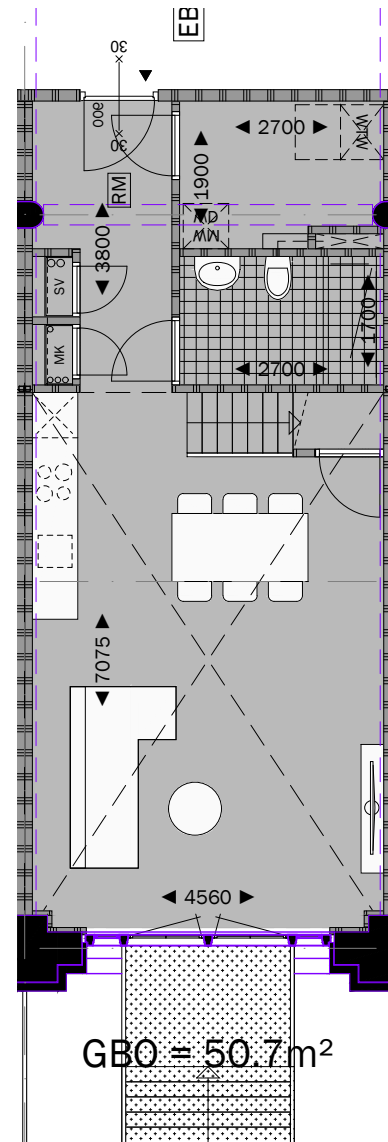
Woningtype A1
begangrond - entree laag



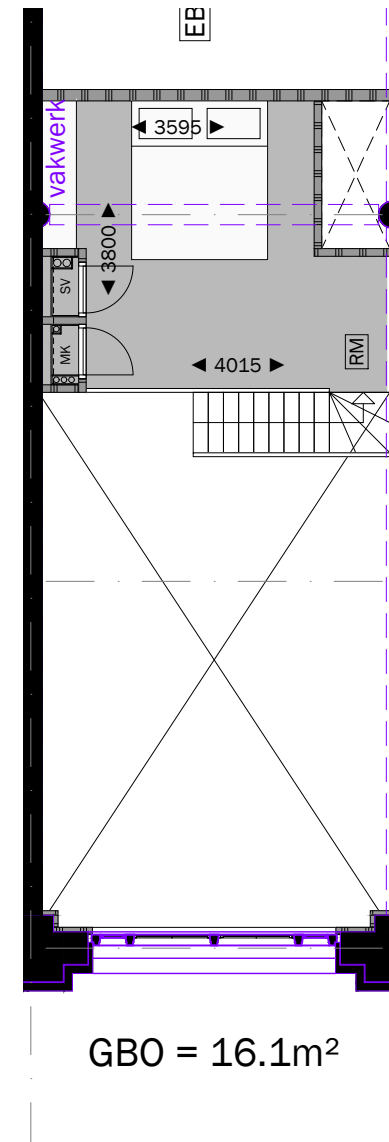
Woningtype A1
begangrond - entresol

project: WEST507 Westzeedijk 507, Rotterdam	opdrachtgever: Waterford Investments & Vervat Vastgoed Rotterdam	onderwerp: Nieuwe situatie Woningtype A1	projectnummer: 16034	formaat: A3	schaal: 1:100	datum: 22.12.2017	tekeningnummer: D0.170
---	--	--	-------------------------	----------------	------------------	----------------------	---------------------------





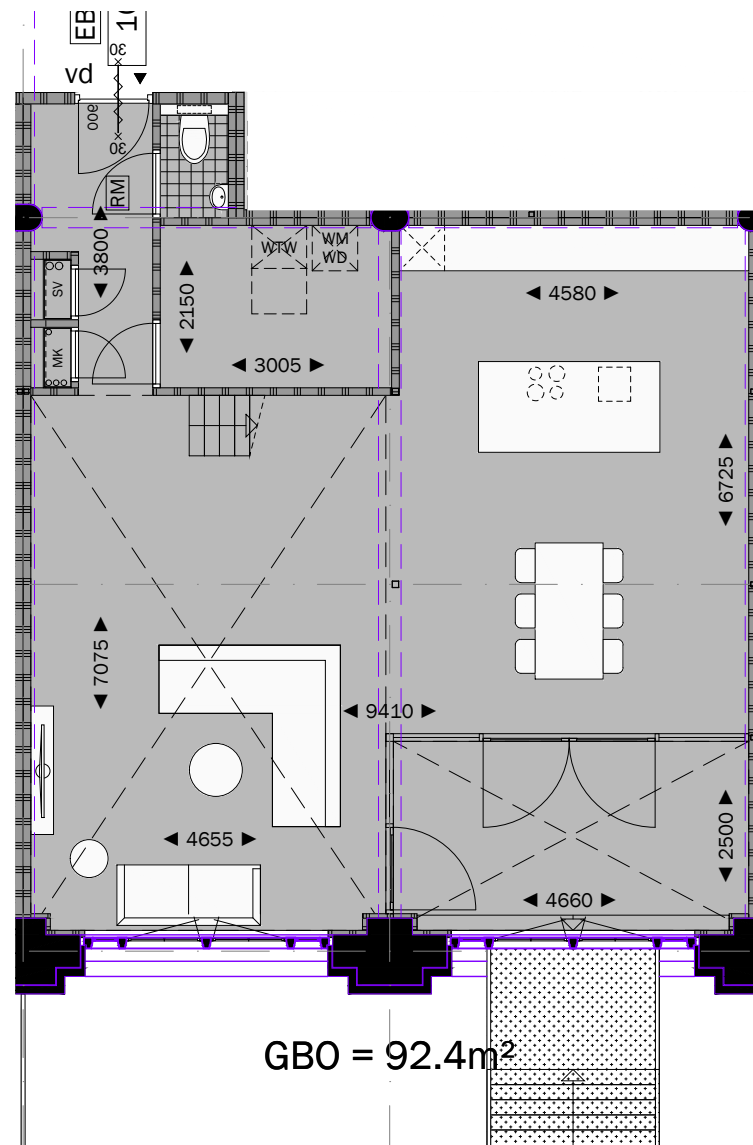
Woningtype B1
beganegrond



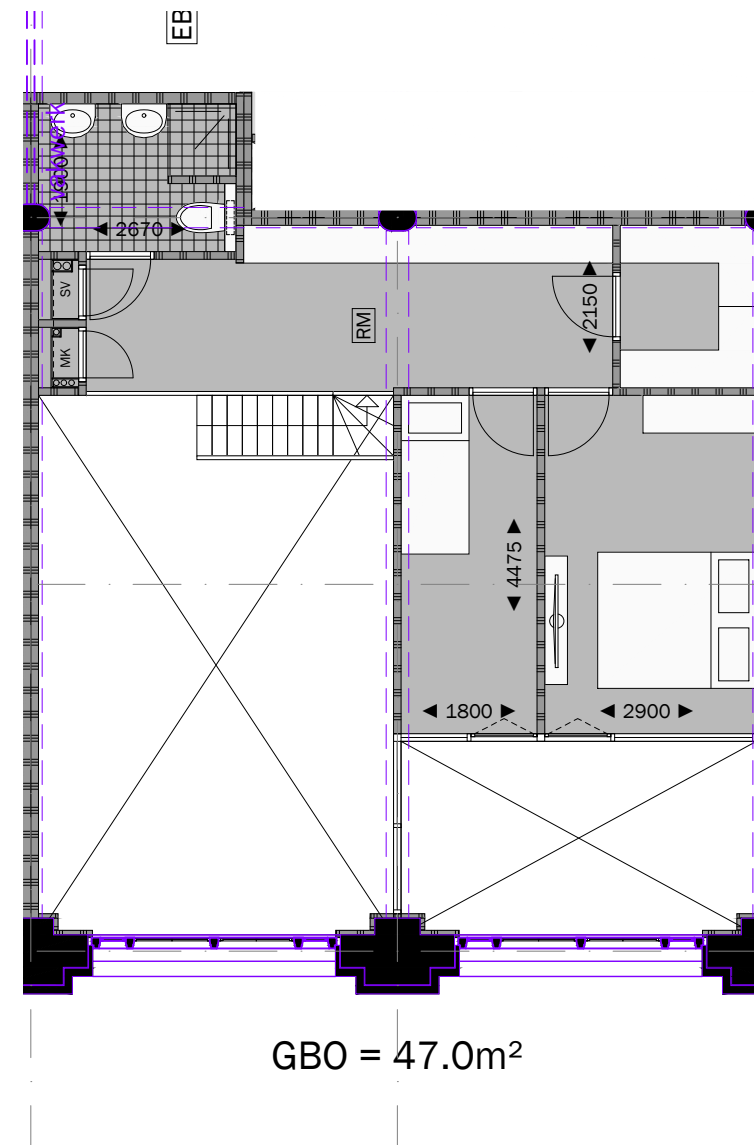
Woningtype B1
beganegrond - entresol

project: WEST507 Westzeedijk 507, Rotterdam	opdrachtgever: Waterford Investments & Vervat Vastgoed Rotterdam	onderwerp: Nieuwe situatie Woningtype B1	projectnummer: 16034	formaat: A3	schaal: 1:100	datum: 22.12.2017	tekeningnummer: D0.170
---	--	--	-------------------------	----------------	------------------	----------------------	---------------------------



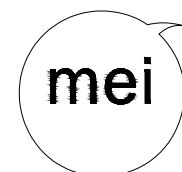


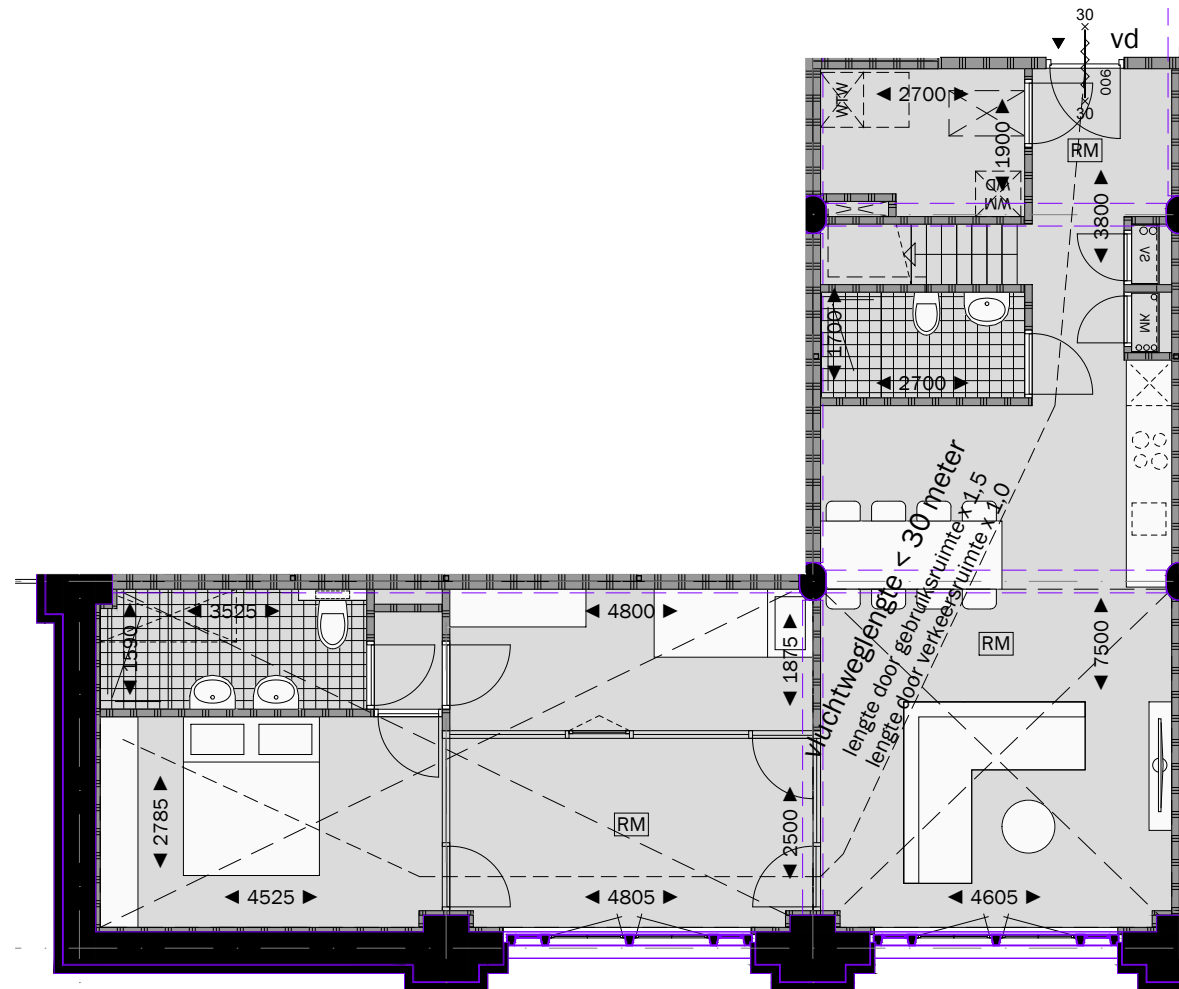
Woningtype C1
begane grond - entreelaag



Woningtype C1
begane grond - entresol

project: WEST507 Westzeedijk 507, Rotterdam	opdrachtgever: Waterford Investments & Vervat Vastgoed Rotterdam	onderwerp: Nieuwe situatie Woningtype C1	projectnummer: 16034	formaat: A3	schaal: 1:100	datum: 22.12.2017	tekeningnummer: D0.170
---	--	--	-------------------------	----------------	------------------	----------------------	---------------------------

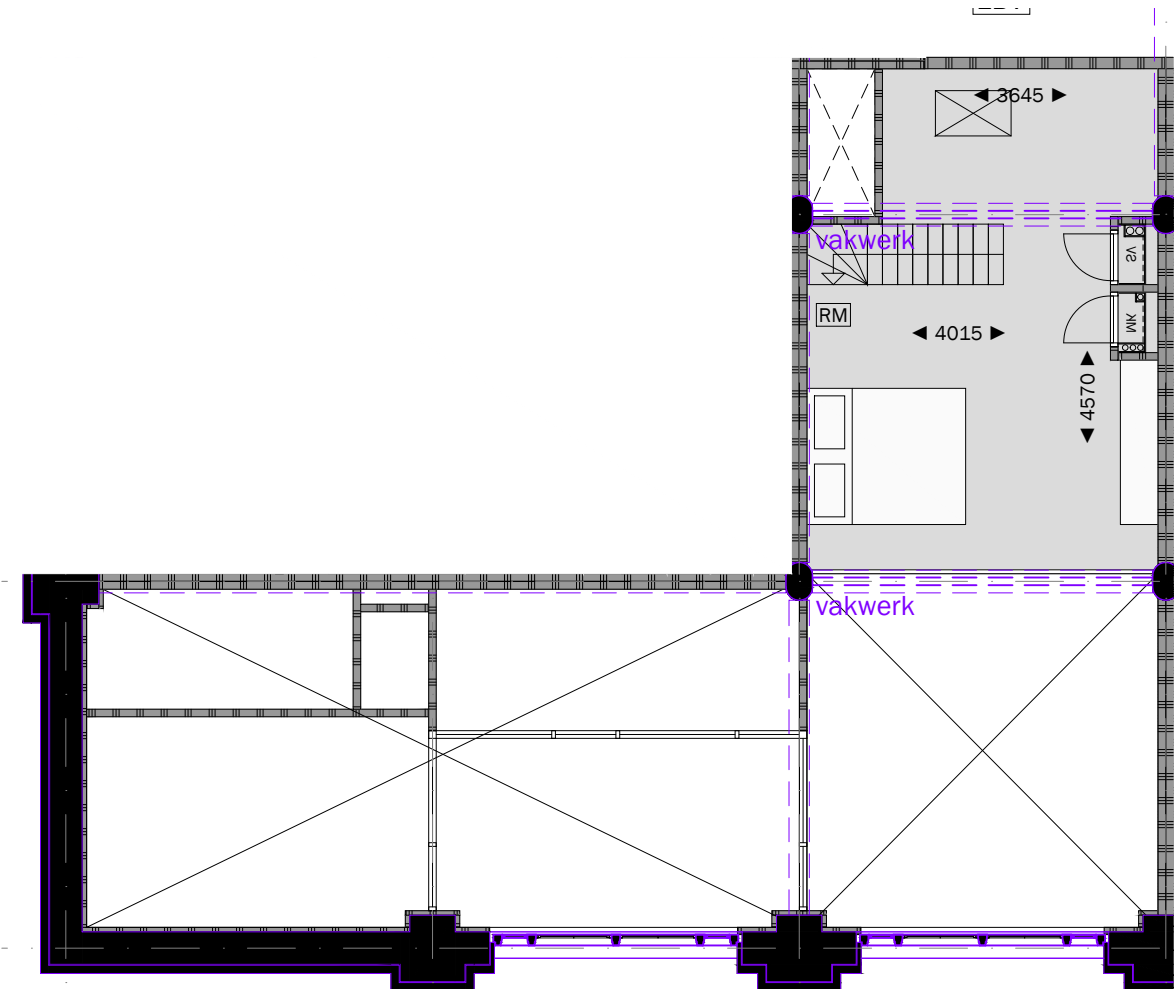




te openen souterrain ramen:
26,4m² bruto, 17,8m² netto (75%) GBO = 95.0m²

BH
⊕

Woningtype D1
beganeground - entree laag



GBO = 29.0m²

Woningtype D1
beganeground - entresol

project:
WEST507
Westzeedijk 507, Rotterdam

opdrachtgever:
Waterford Investments & Vervat Vastgoed
Rotterdam

onderwerp:
Nieuwe situatie
Woningtype D1

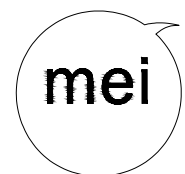
projectnummer:
16034

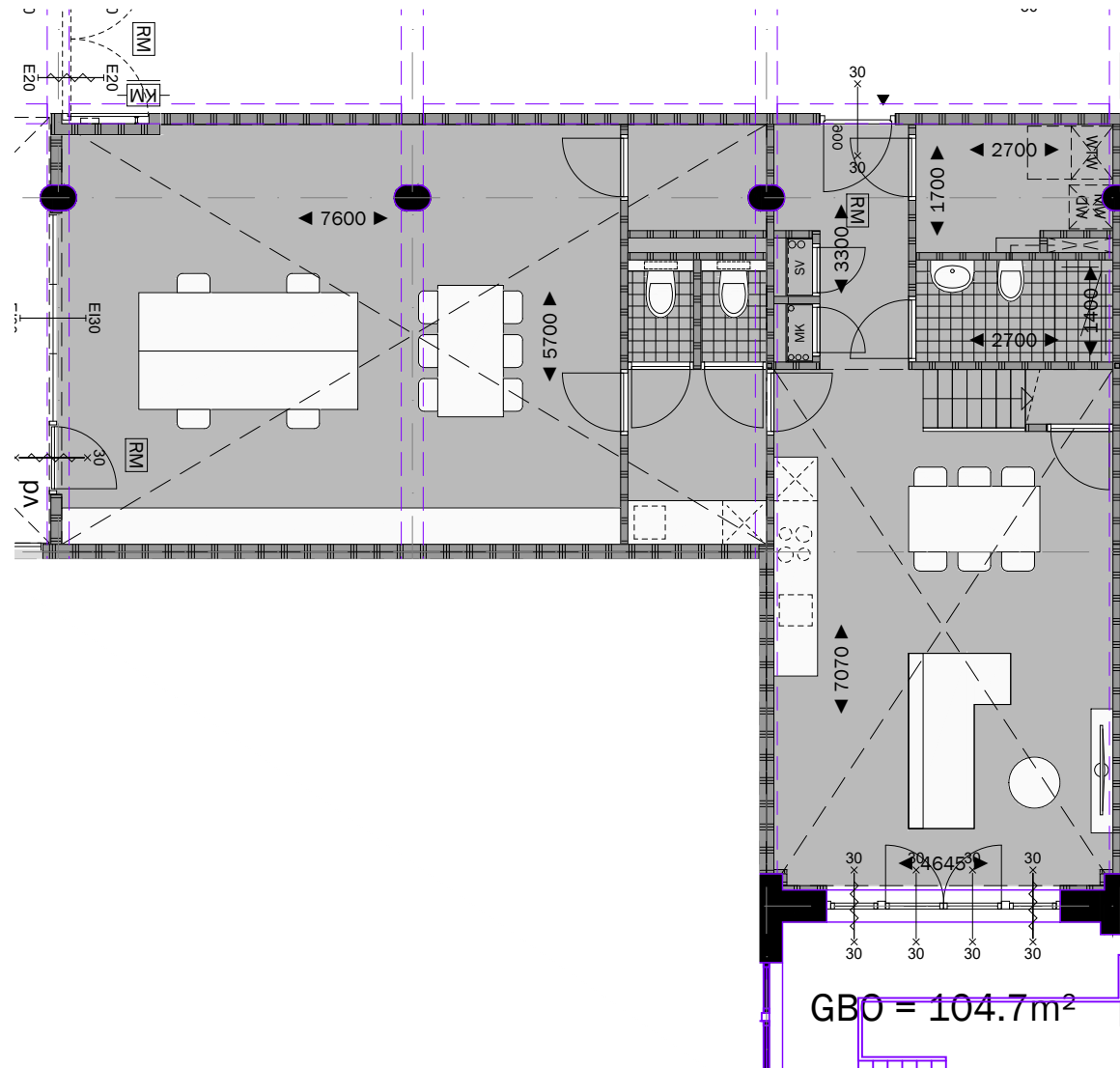
formaat:
A3

schaal:
1:100

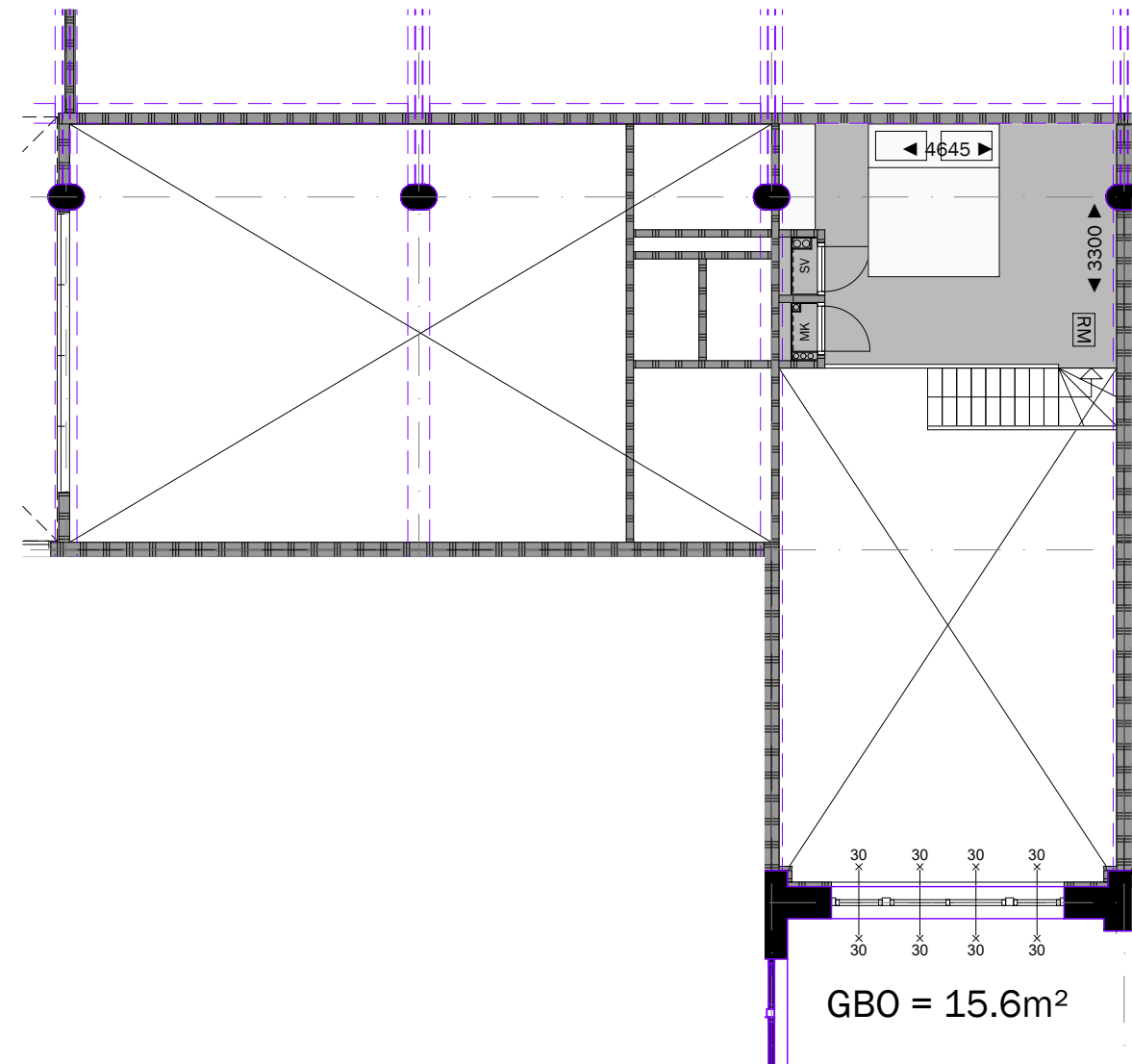
datum:
22.12.2017

tekeningnummer:
D0.170



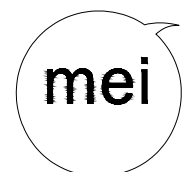


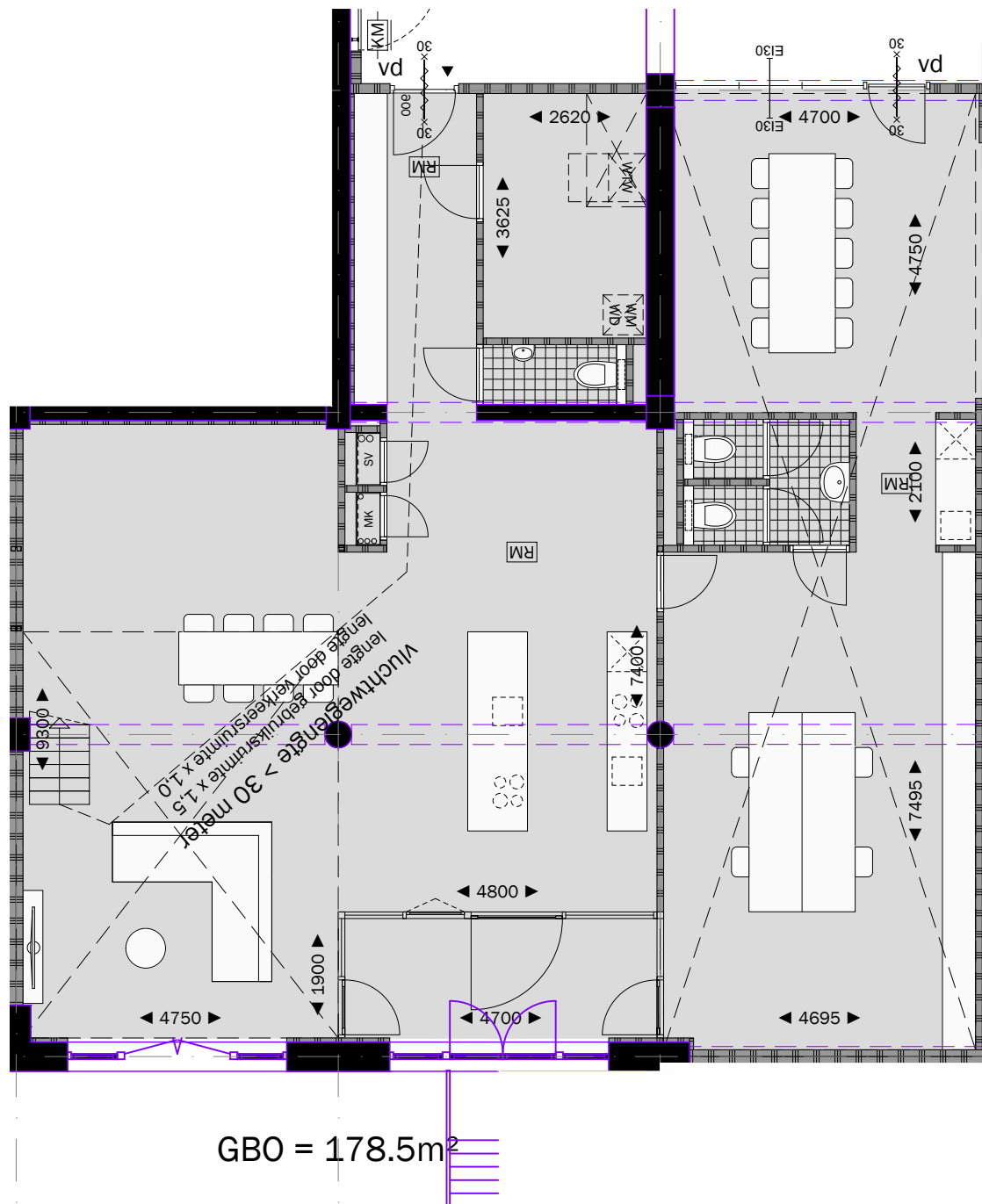
Woningtype E1
beganeground - entree laag



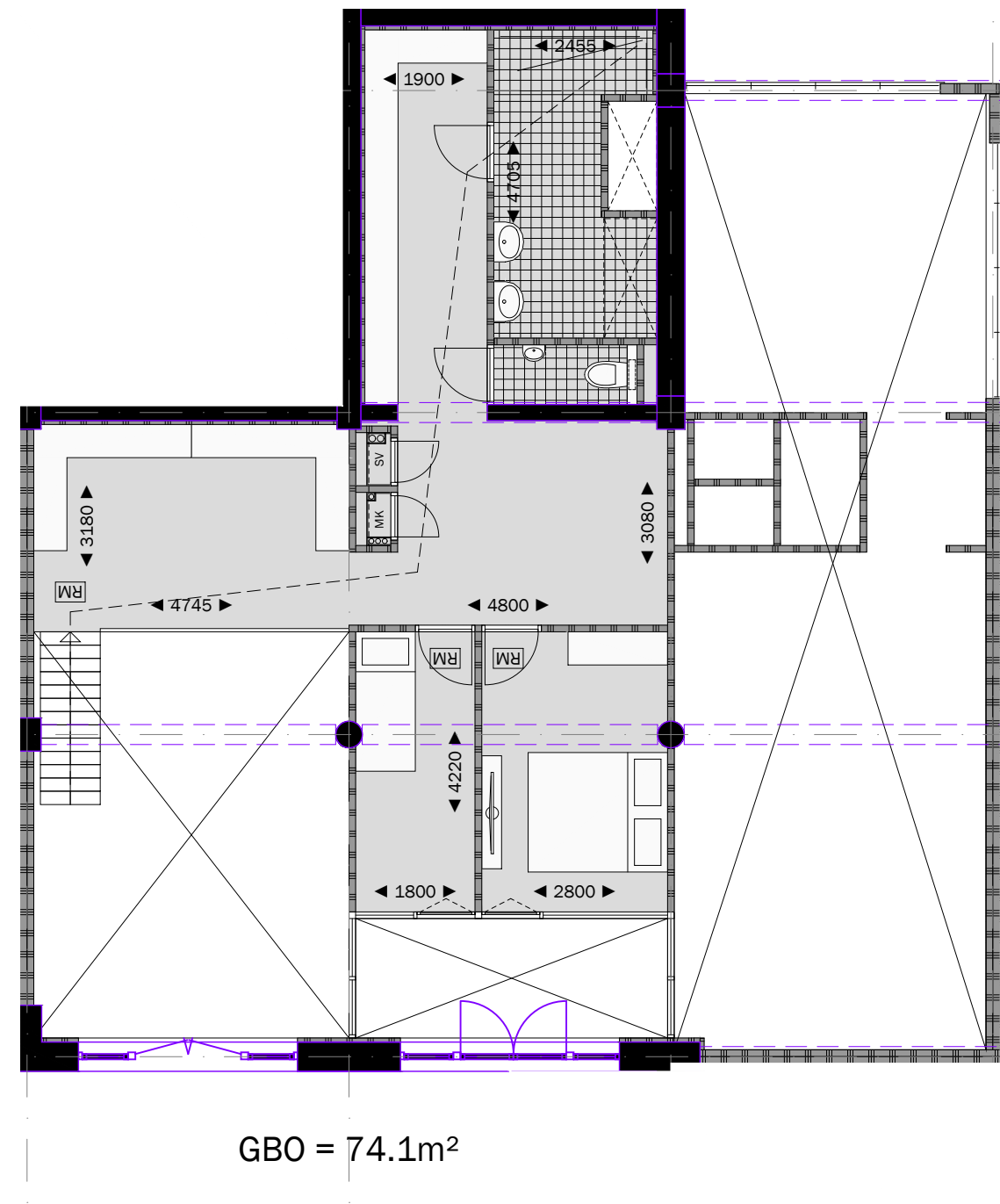
Woningtype E1
beganeground - entresol

project: WEST507 Westzeedijk 507, Rotterdam	opdrachtgever: Waterford Investments & Vervat Vastgoed Rotterdam	onderwerp: Nieuwe situatie Woningtype E1	projectnummer: 16034	formaat: A3	schaal: 1:100	datum: 22.12.2017	tekeningnummer: D0.170
---	--	--	-------------------------	----------------	------------------	----------------------	---------------------------



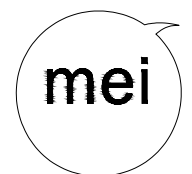


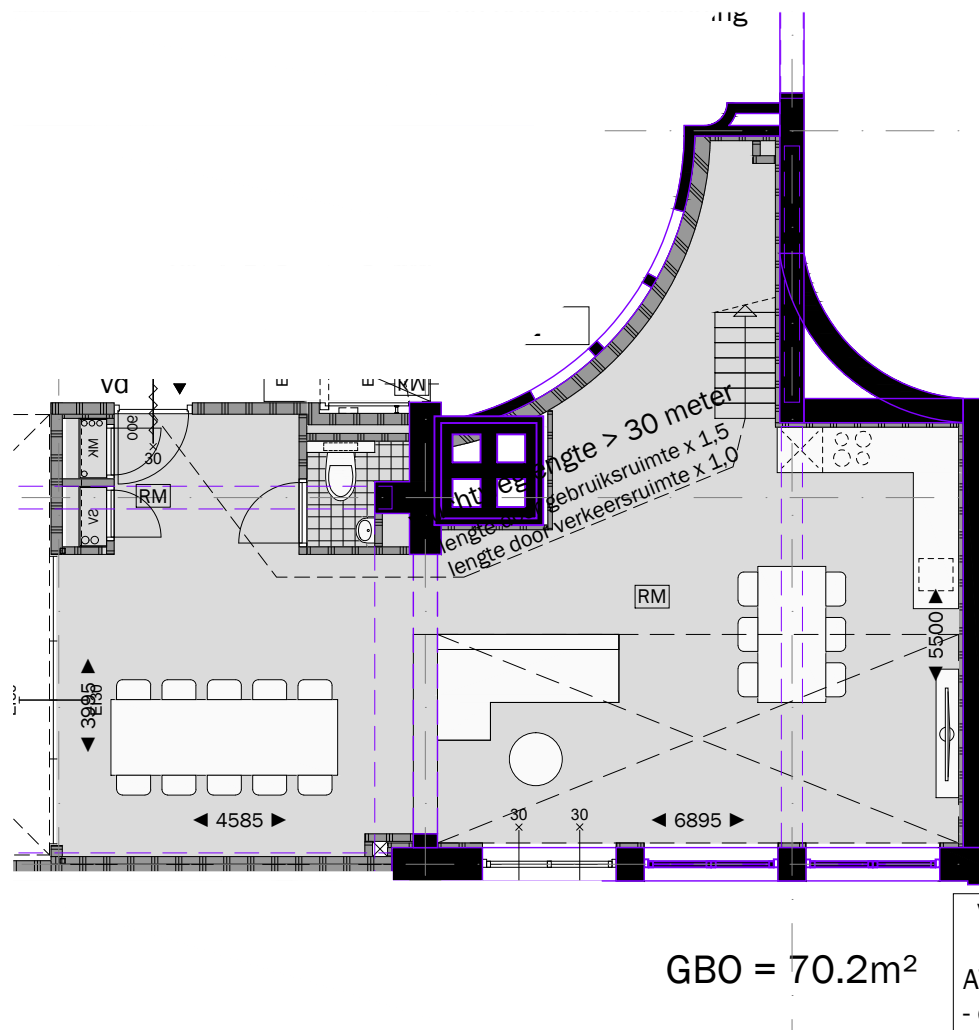
Woningtype F1
beganegrond - entreelaag



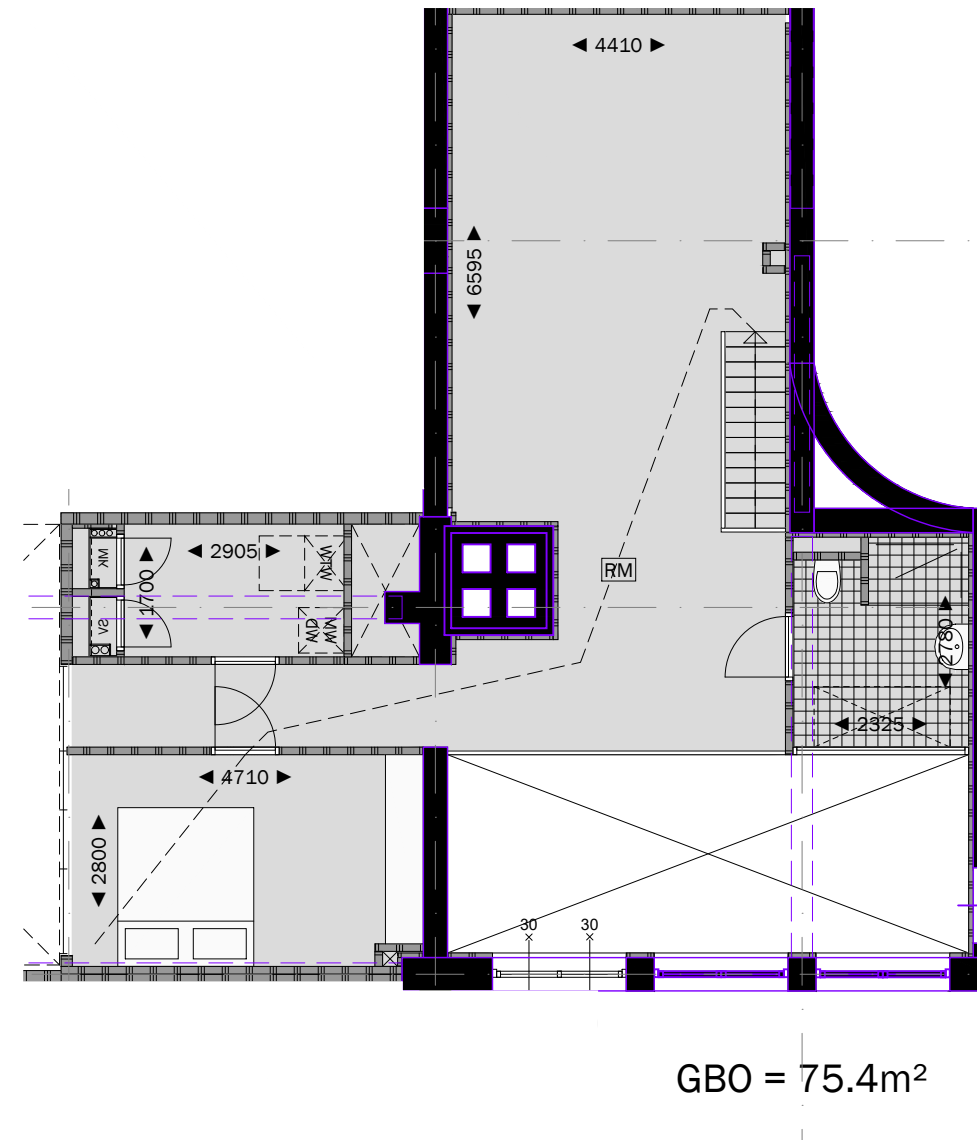
Woningtype F1
beganegrond - entresol

project: WEST507 Westzeedijk 507, Rotterdam	opdrachtgever: Waterford Investments & Vervat Vastgoed Rotterdam	onderwerp: Nieuwe situatie Woningtype F1	projectnummer: 16034	formaat: A3	schaal: 1:100	datum: 22.12.2017	tekeningnummer: D0.170
---	--	--	-------------------------	----------------	------------------	----------------------	---------------------------



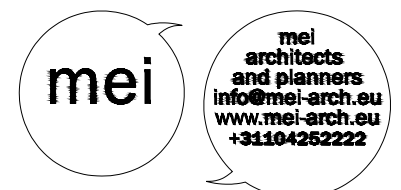


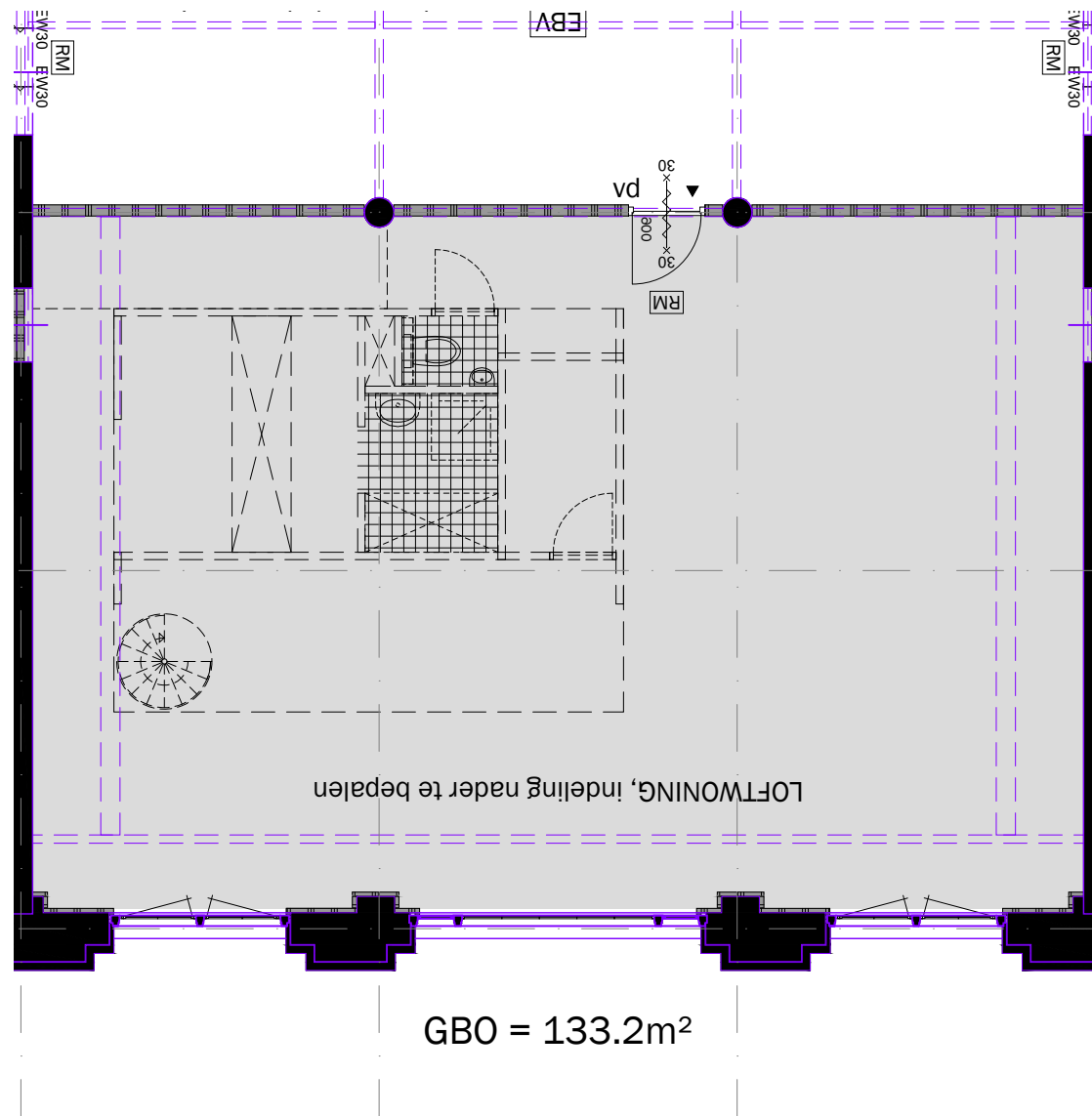
Woningtype G1
begane grond - entreelaag



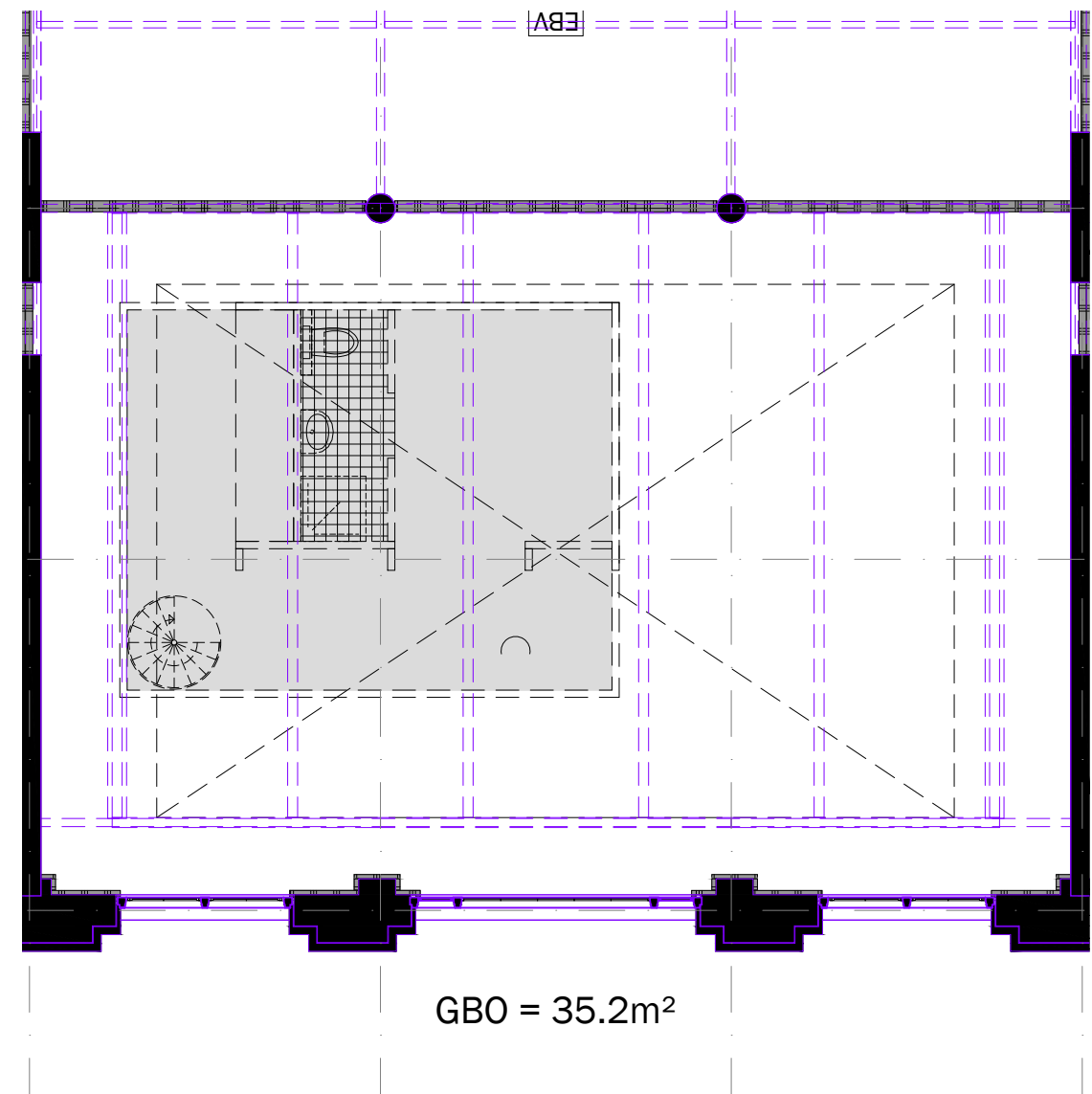
Woningtype G1
begane grond - entresol

project: WEST507 Westzeedijk 507, Rotterdam	opdrachtgever: Waterford Investments & Vervat Vastgoed Rotterdam	onderwerp: Nieuwe situatie Woningtype G1	projectnummer: 16034	formaat: A3	schaal: 1:100	datum: 22.12.2017	tekeningnummer: D0.170
---	--	--	-------------------------	----------------	------------------	----------------------	---------------------------



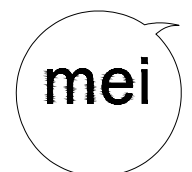


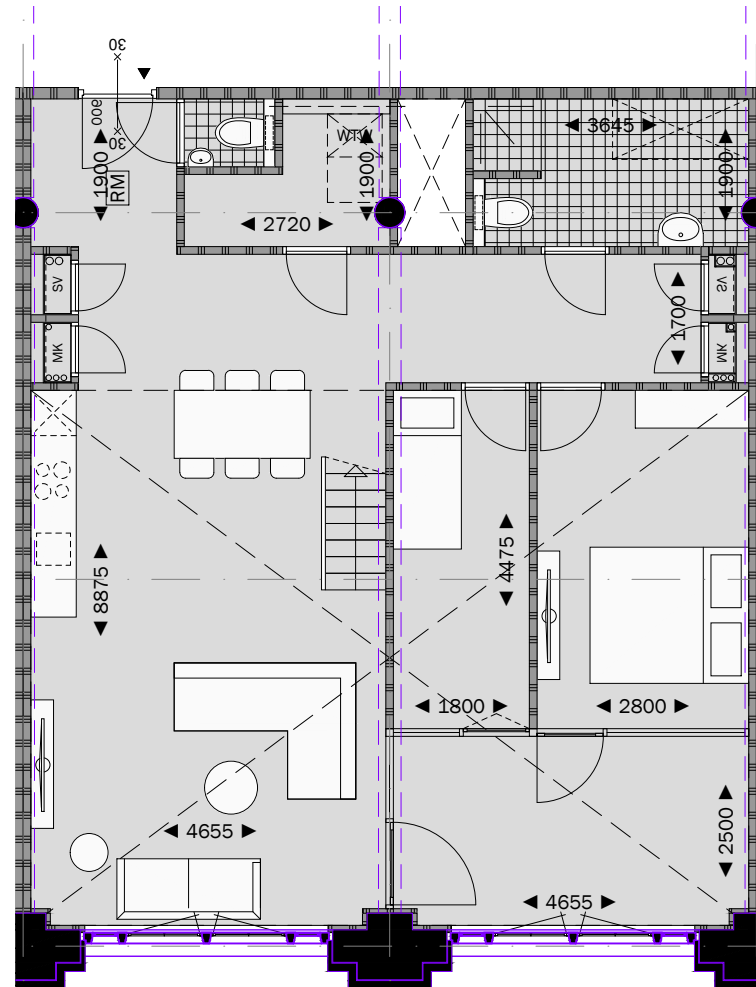
Woningtype J1
 verdieping 1 - Julianazaal
 Indeling i.o.m. koper



Woningtype J1
 optie: verdieping - entresol - Julianazaal
 Indeling i.o.m. koper

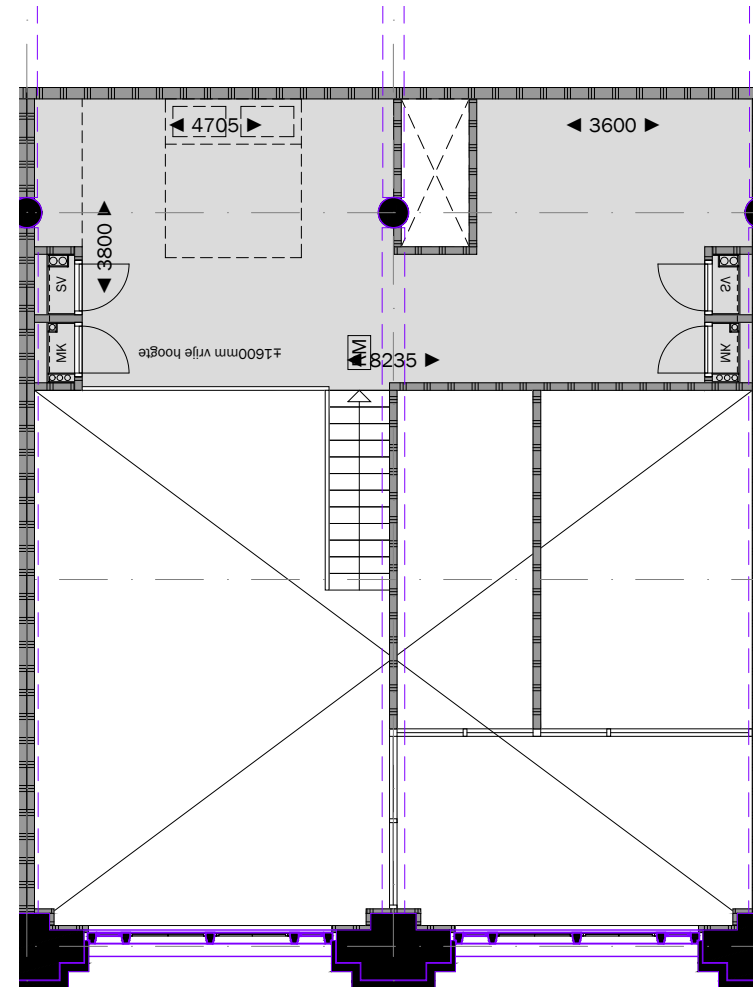
project: WEST507 Westzeedijk 507, Rotterdam	opdrachtgever: Waterford Investments & Vervat Vastgoed Rotterdam	onderwerp: Nieuwe situatie Woningtype J1	projectnummer: 16034	formaat: A3	schaal: 1:100	datum: 22.12.2017	tekeningnummer: DO.170
---	--	--	-------------------------	----------------	------------------	----------------------	---------------------------





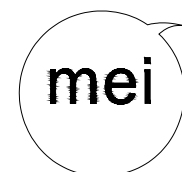
GBO = 101.2m²

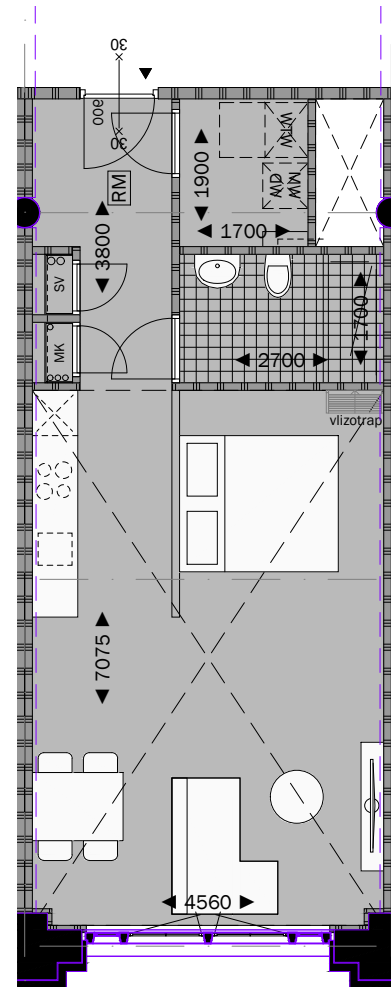
Woningtype A2
verdieping 1 & 2 - entreelaag



Woningtype A2
optie: verdieping - entresol

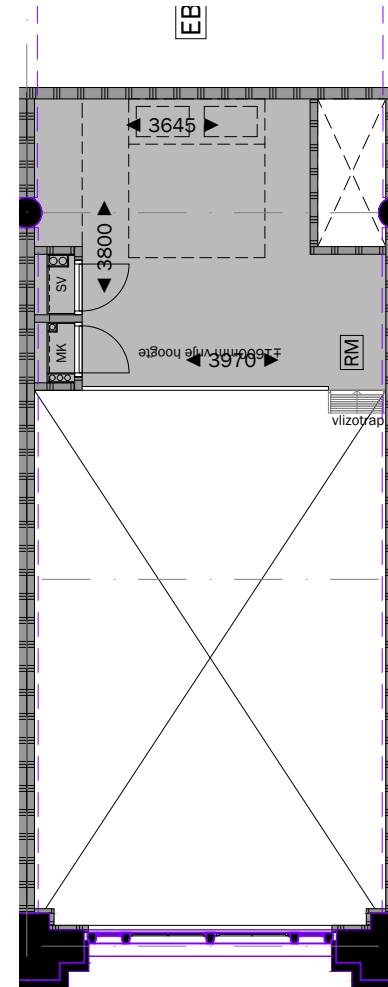
project: WEST507 Westzeedijk 507, Rotterdam	opdrachtgever: Waterford Investments & Vervat Vastgoed Rotterdam	onderwerp: Nieuwe situatie Woningtype A2	projectnummer: 16034	formaat: A3	schaal: 1:100	datum: 22.12.2017	tekeningnummer: D0.170
---	--	--	-------------------------	----------------	------------------	----------------------	---------------------------





GBO = 48.6m²

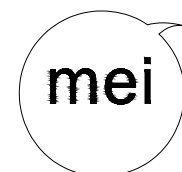
Woningtype B2
verdieping 1 & 2 - entreelaag

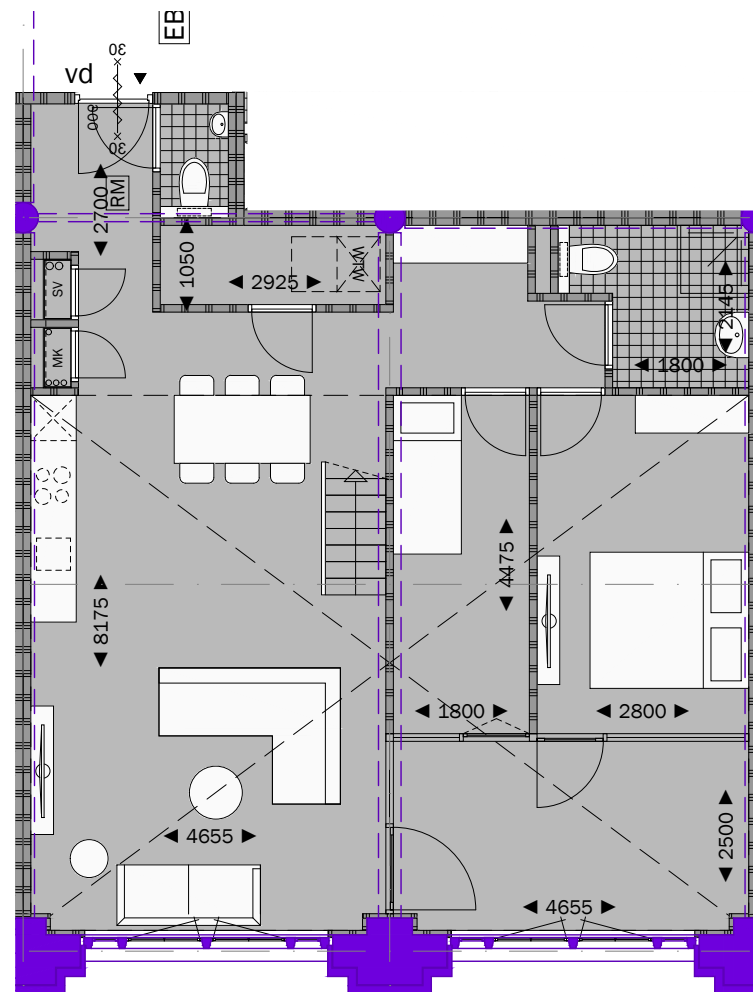


GBO = 15.9m²

Woningtype B2
optie: verdieping - entresol

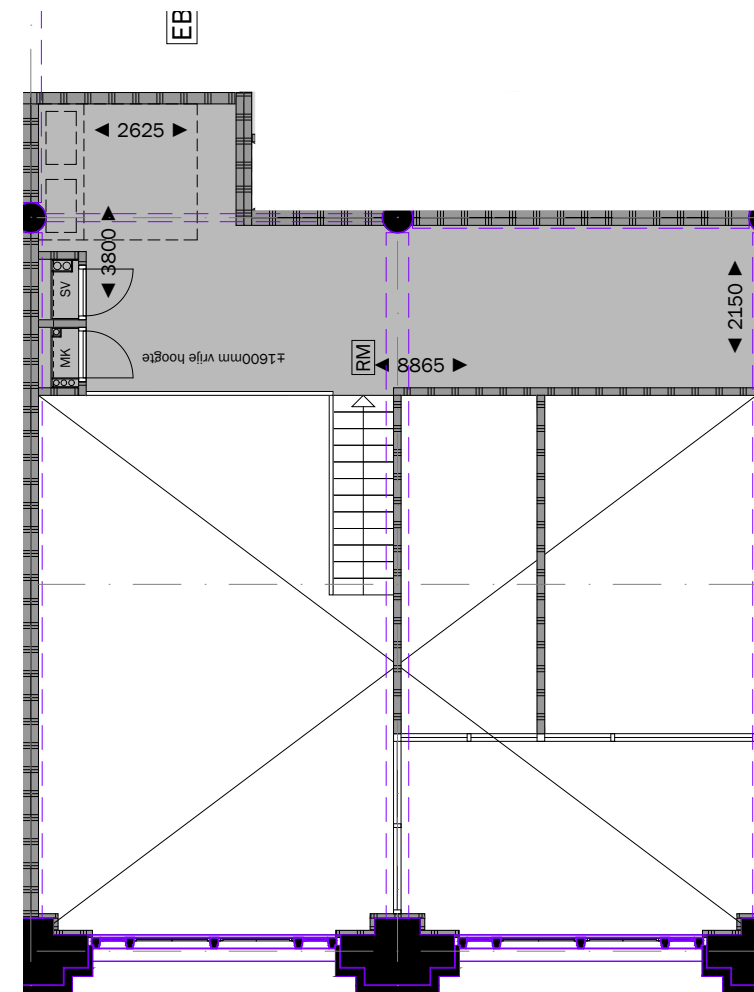
project: WEST507 Westzeedijk 507, Rotterdam	opdrachtgever: Waterford Investments & Vervat Vastgoed Rotterdam	onderwerp: Nieuwe situatie Woningtype B2	projectnummer: 16034	formaat: A3	schaal: 1:100	datum: 22.12.2017	tekeningnummer: D0.170
---	--	--	-------------------------	----------------	------------------	----------------------	---------------------------





GBO = 92.4m²

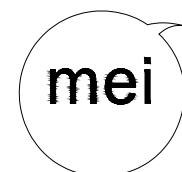
Woningtype C2
verdieping 1 & 2- entreelaag

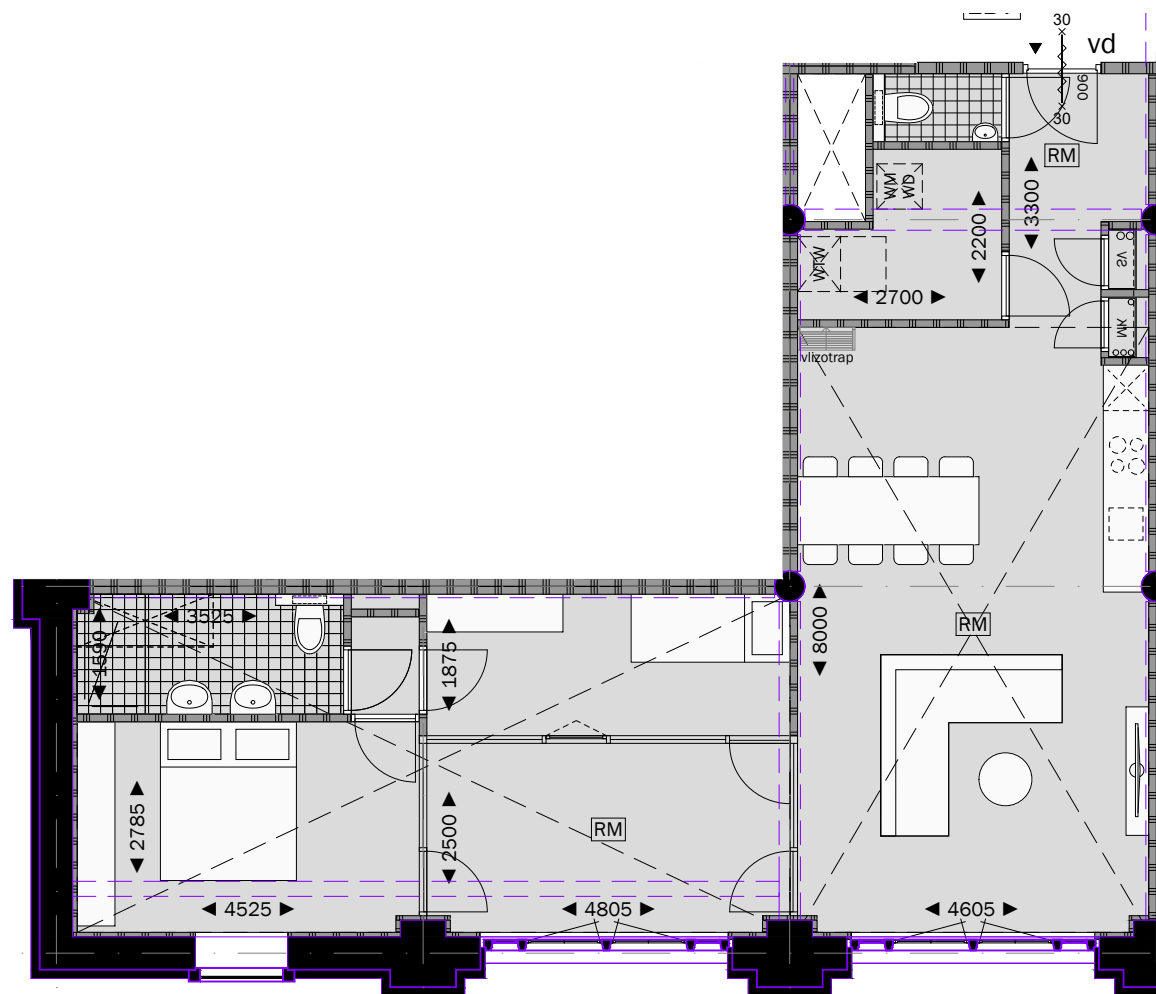


GBO = 25.6m²

Woningtype C2
optie: verdieping - entresol

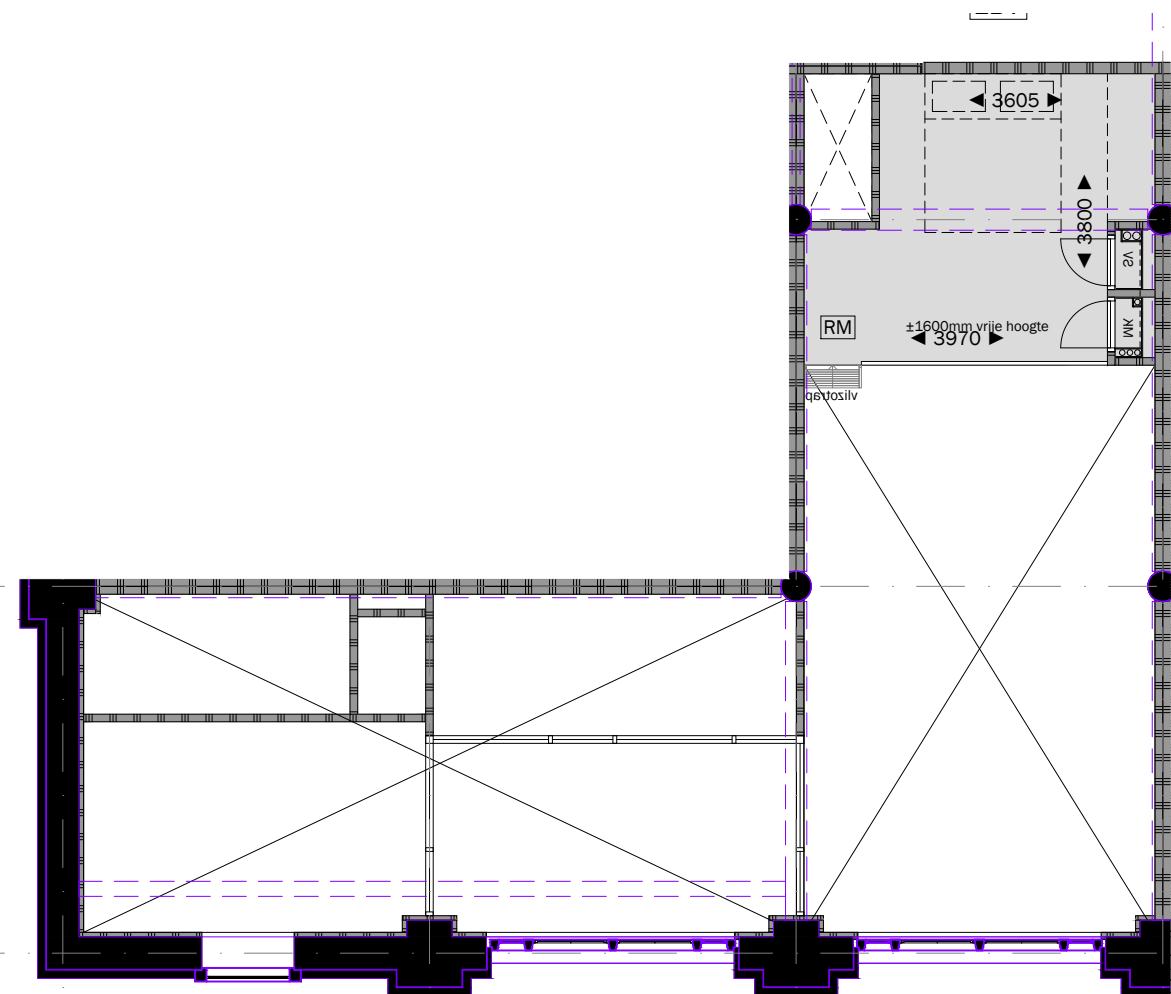
project: WEST507 Westzeedijk 507, Rotterdam	opdrachtgever: Waterford Investments & Vervat Vastgoed Rotterdam	onderwerp: Nieuwe situatie Woningtype C2	projectnummer: 16034	formaat: A3	schaal: 1:100	datum: 22.12.2017	tekeningnummer: D0.170
---	--	--	-------------------------	----------------	------------------	----------------------	---------------------------





GBO = 92.9m²

Woningtype D2
verdieping 1 & 2- entreelaag



GBO = 15.9m²

Woningtype D2
optie: verdieping - entresol

project:
WEST507
Westzeedijk 507, Rotterdam

opdrachtgever:
Waterford Investments & Vervat Vastgoed
Rotterdam

onderwerp:
Nieuwe situatie
Woningtype D2

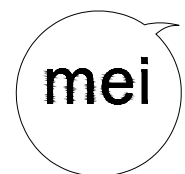
projectnummer:
16034

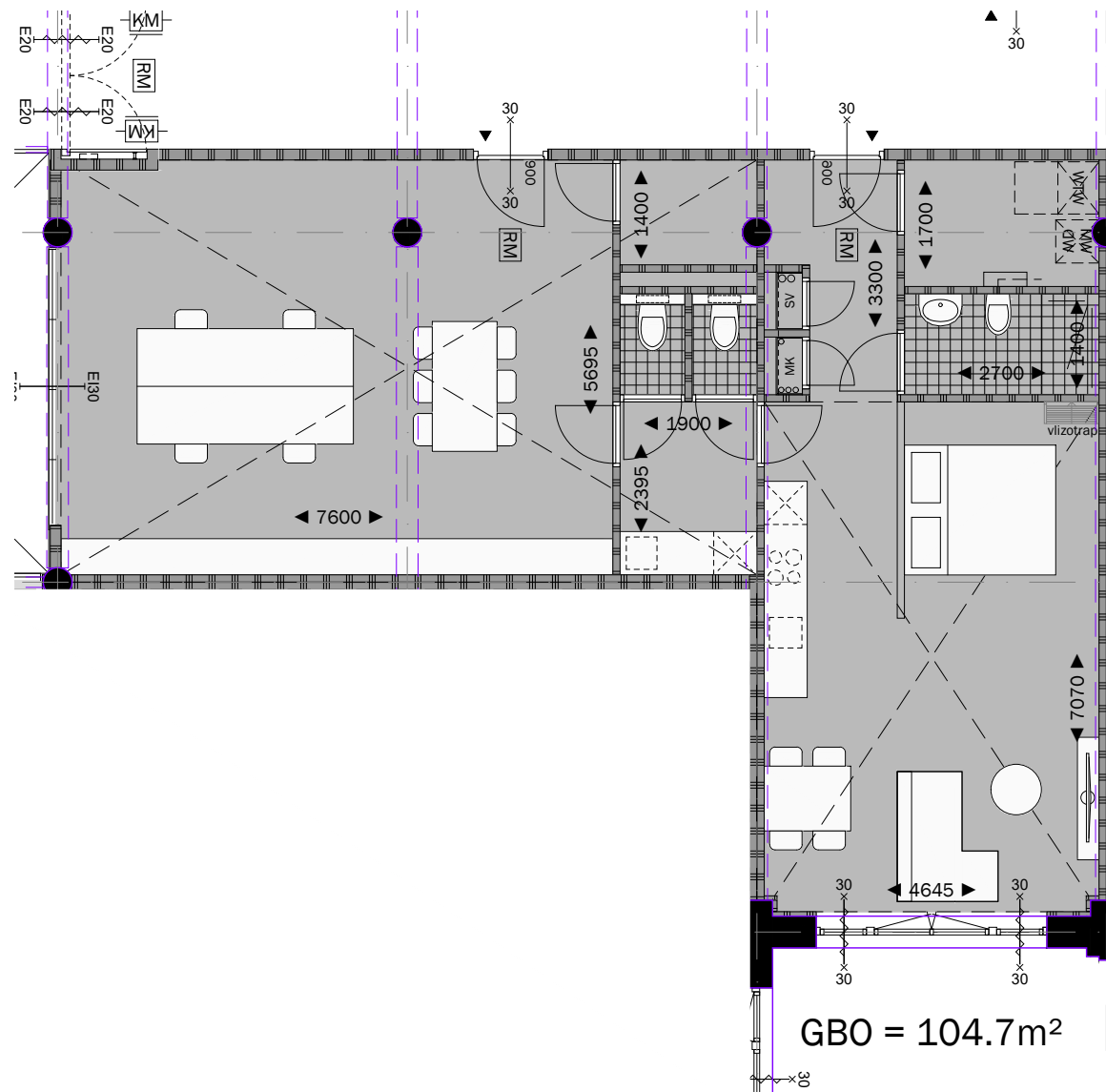
formaat:
A3

schaal:
1:100

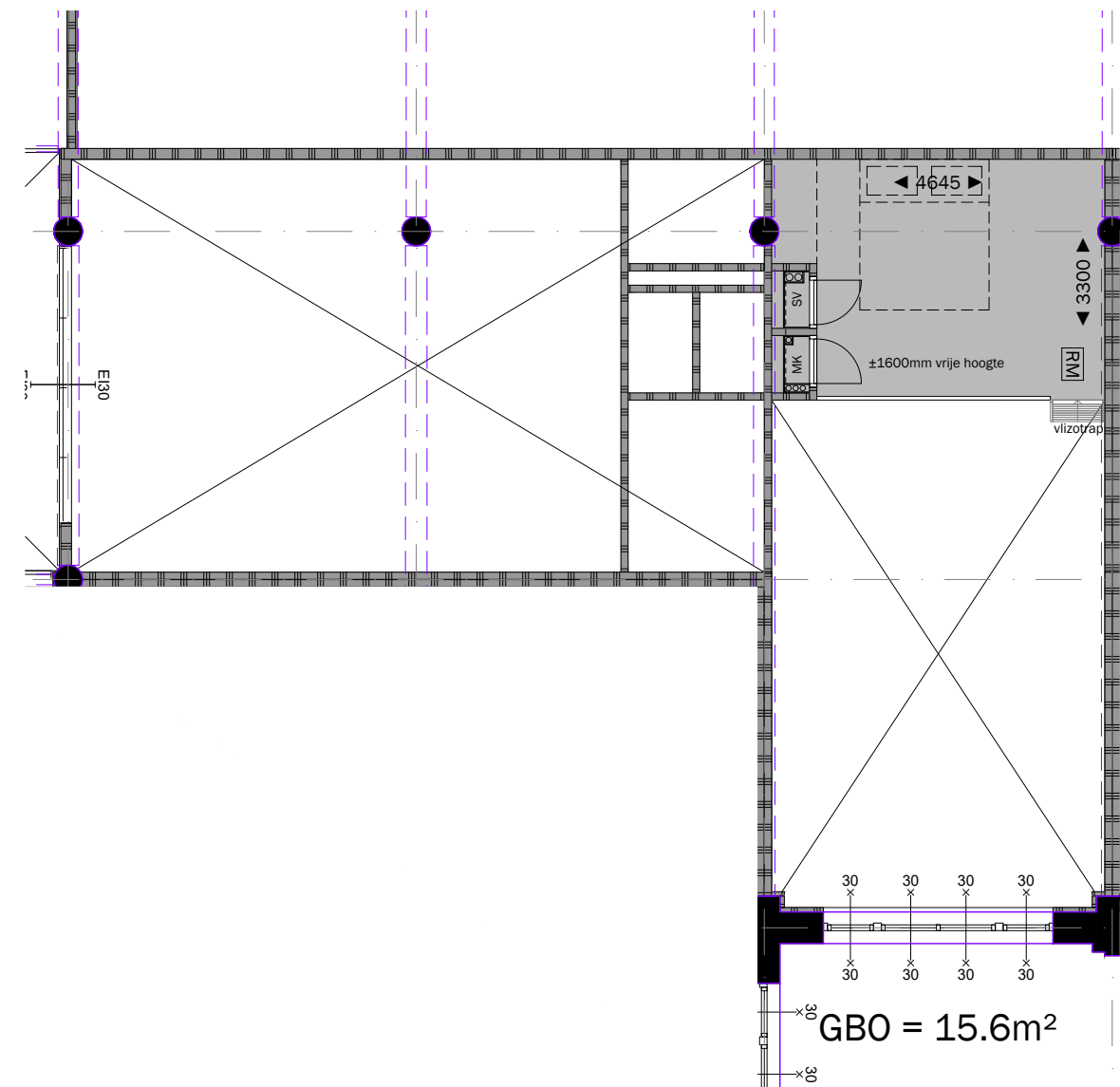
datum:
22.12.2017

tekeningnummer:
D0.170





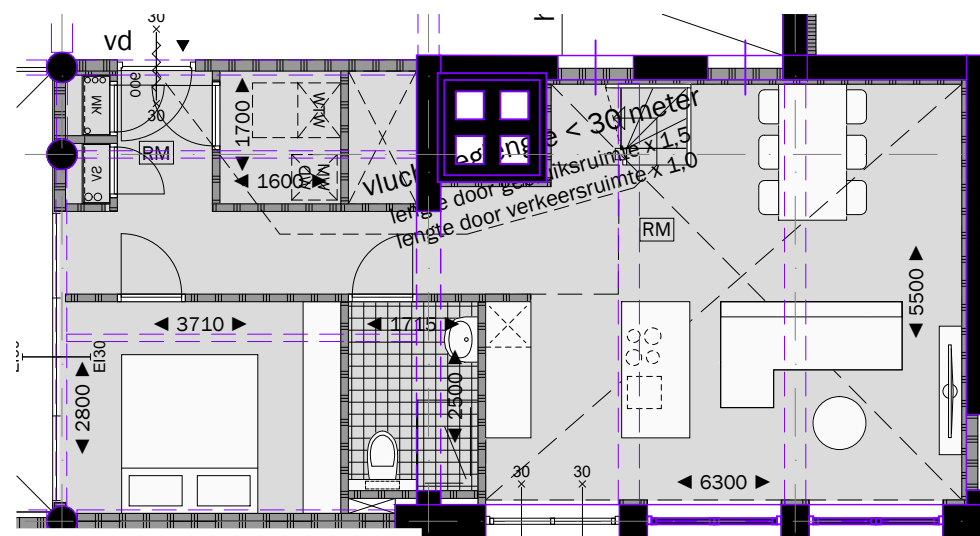
Woningtype E2
verdieping 1 & 2- entreelaag



Woningtype E2
optie: verdieping - entresol

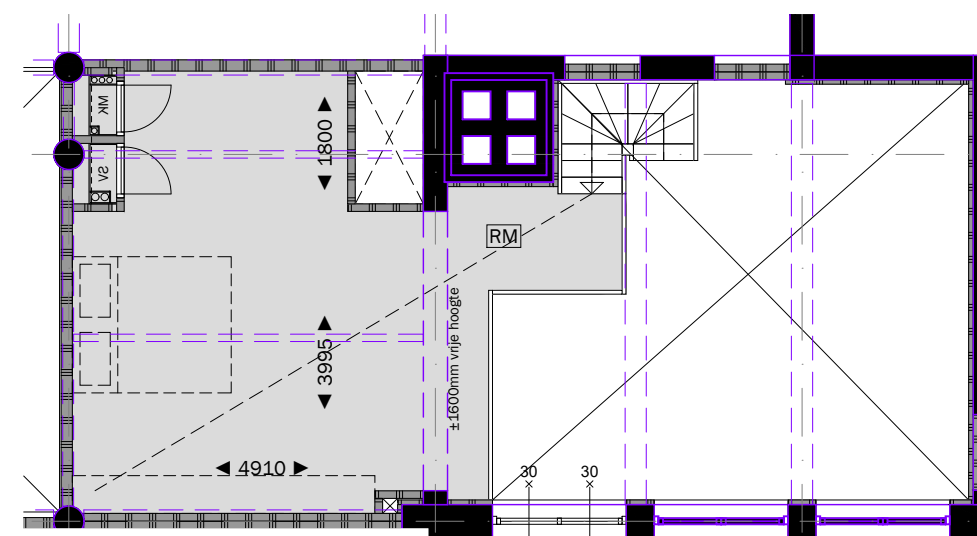
project: WEST507 Westzeedijk 507, Rotterdam	opdrachtgever: Waterford Investments & Vervat Vastgoed Rotterdam	onderwerp: Nieuwe situatie Woningtype E2	projectnummer: 16034	formaat: A3	schaal: 1:100	datum: 22.12.2017	tekeningnummer: D0.170
---	--	--	-------------------------	----------------	------------------	----------------------	---------------------------





GBO = 64.2m²

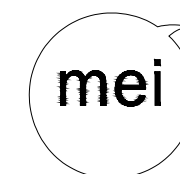
Woningtype G2
verdieping 1 & 2- entree laag

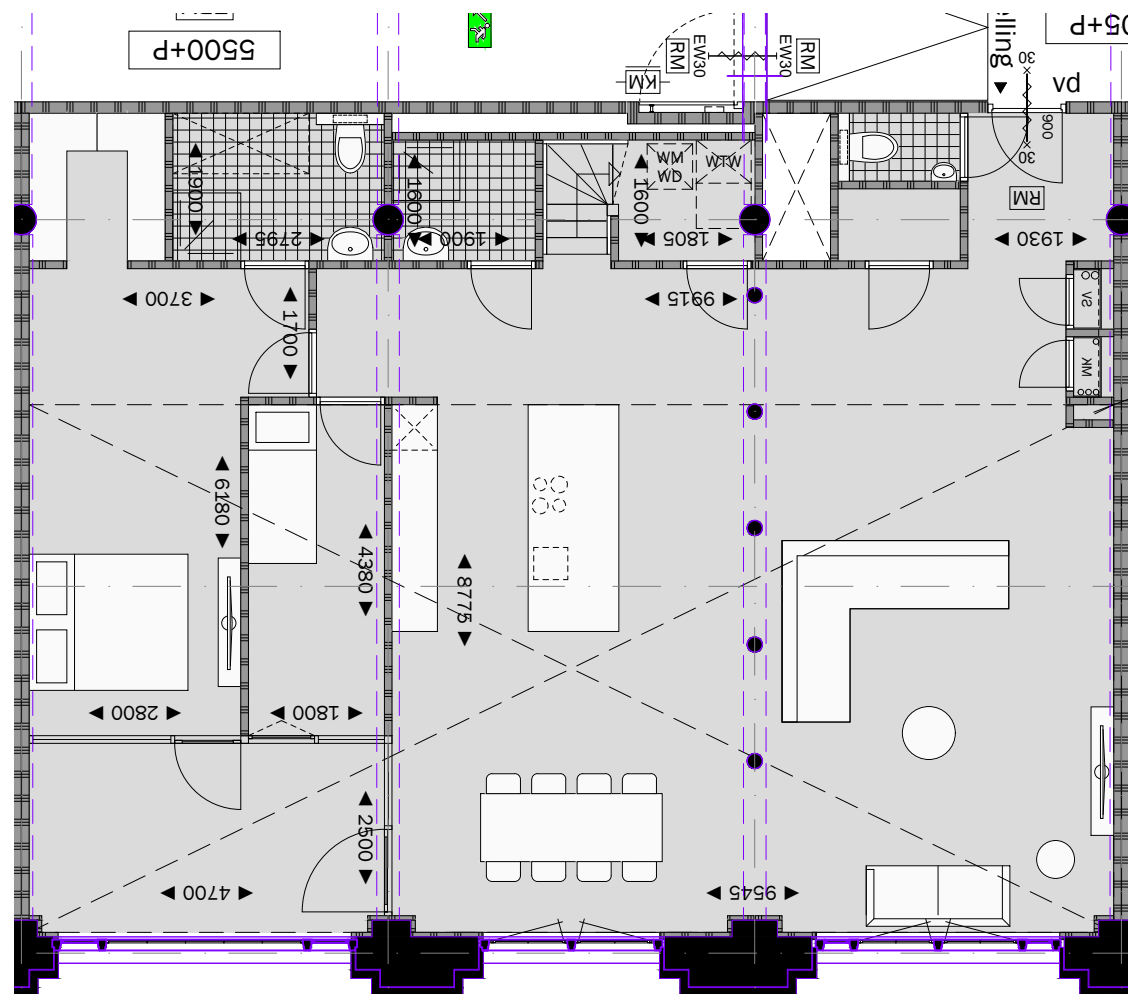


GBO = 31.2m²

Woningtype G2
optie: verdieping - entresol

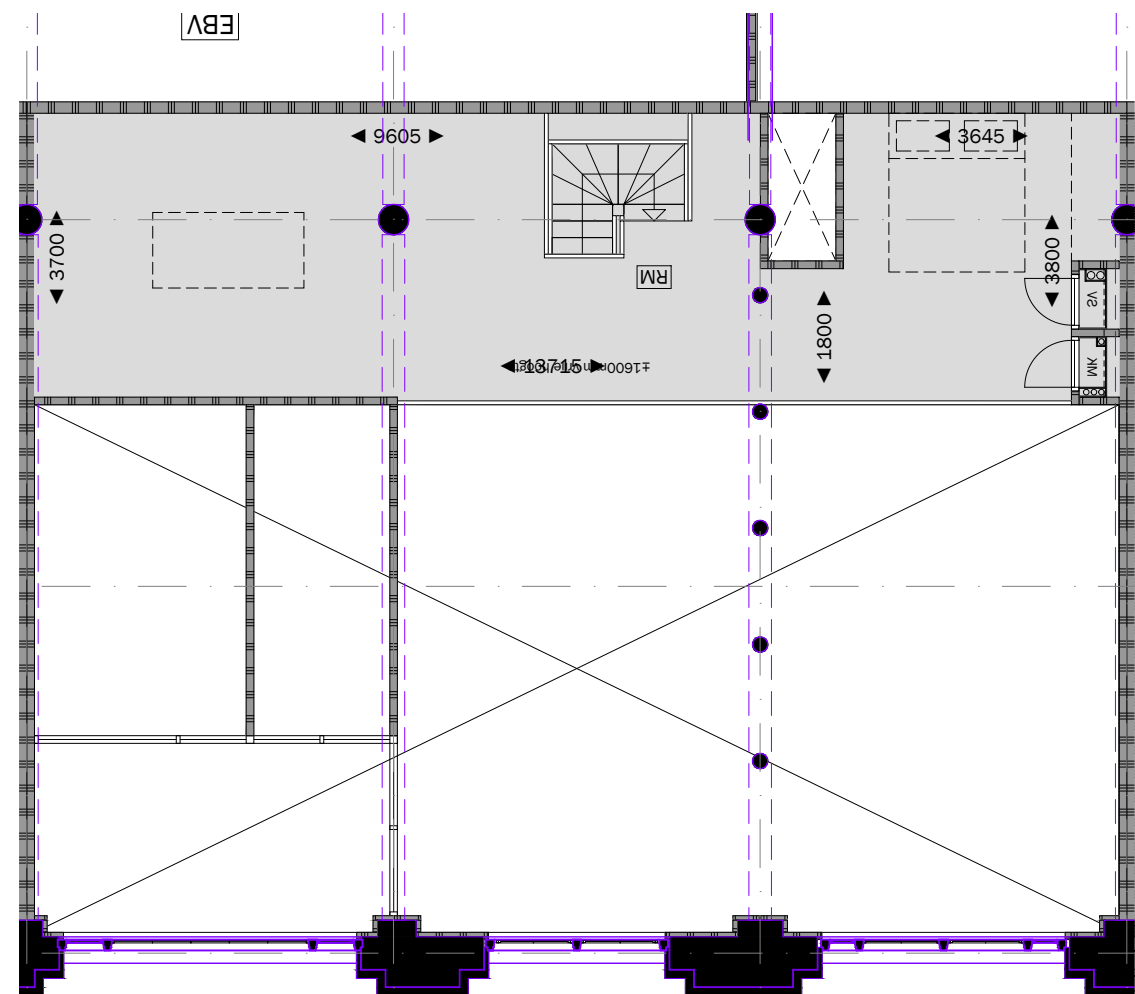
project: WEST507 Westzeedijk 507, Rotterdam	opdrachtgever: Waterford Investments & Vervat Vastgoed Rotterdam	onderwerp: Nieuwe situatie Woningtype G2	projectnummer: 16034	formaat: A3	schaal: 1:100	datum: 22.12.2017	tekeningnummer: D0.170
---	--	--	-------------------------	----------------	------------------	----------------------	---------------------------





GBO = 151.0m²

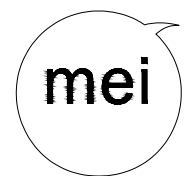
Woningtype A3
verdieping 1 - entreelaag

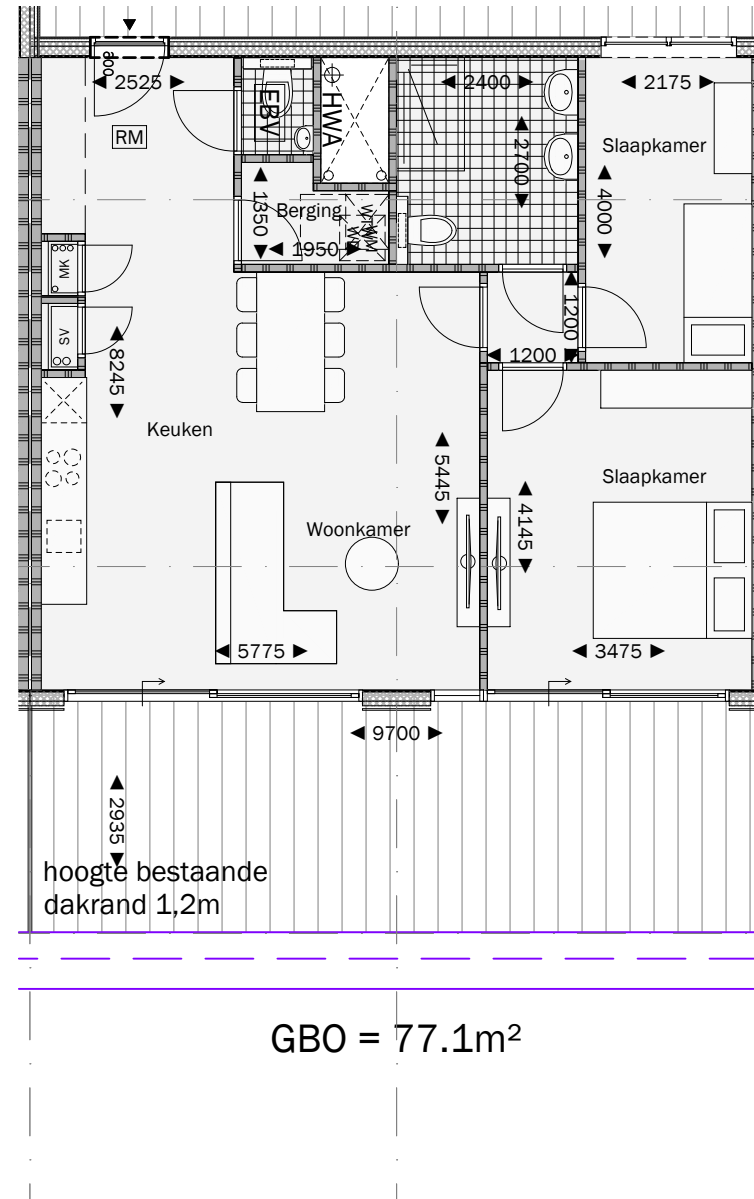


GBO = 53.5m²

Woningtype A3
optie: verdieping - entresol

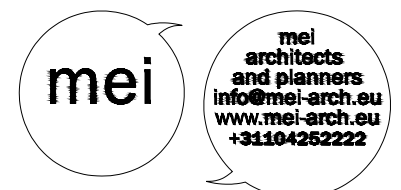
project: WEST507 Westzeedijk 507, Rotterdam	opdrachtgever: Waterford Investments & Vervat Vastgoed Rotterdam	onderwerp: Nieuwe situatie Woningtype A3	projectnummer: 16034	formaat: A3	schaal: 1:100	datum: 22.12.2017	tekeningnummer: D0.170
---	--	--	-------------------------	----------------	------------------	----------------------	---------------------------

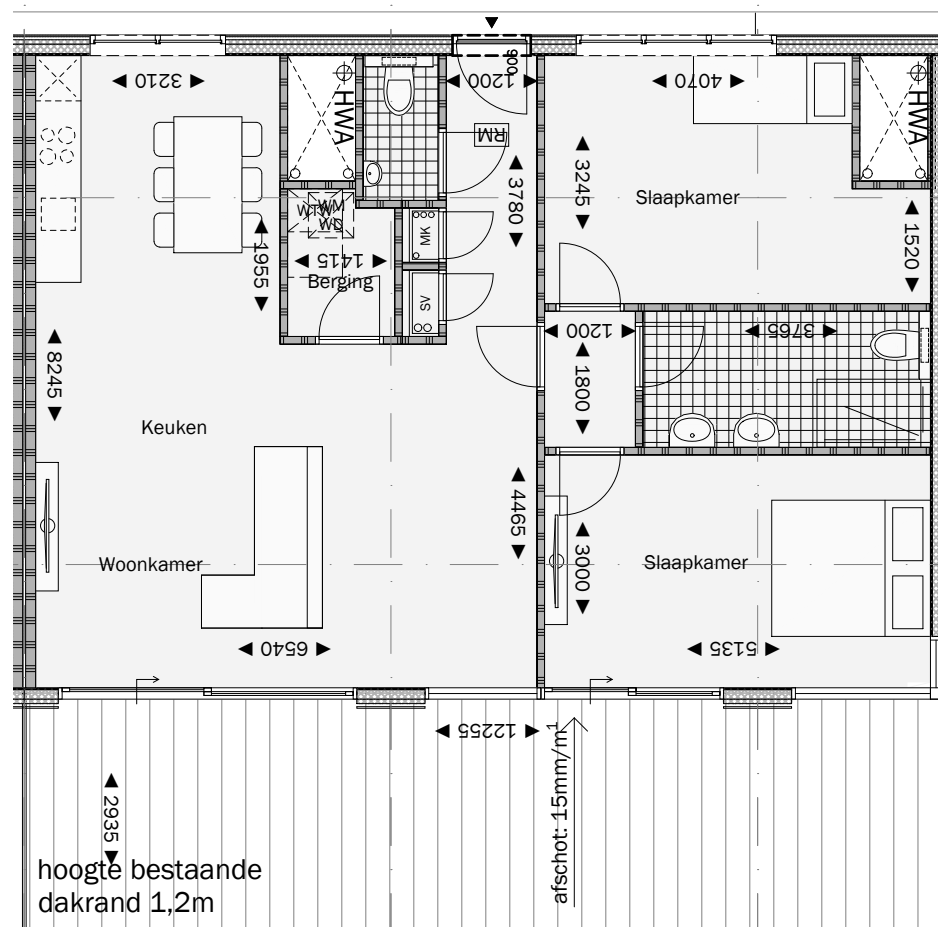




Woningtype P1
3e verdieping

project: WEST507 Westzeedijk 507, Rotterdam	opdrachtgever: Waterford Investments & Vervat Vastgoed Rotterdam	onderwerp: Nieuwe situatie Woningtype P1	projectnummer: 16034	formaat: A3	schaal: 1:100	datum: 22.12.2017	tekeningnummer: D0.170
---	--	--	-------------------------	----------------	------------------	----------------------	---------------------------

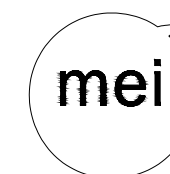


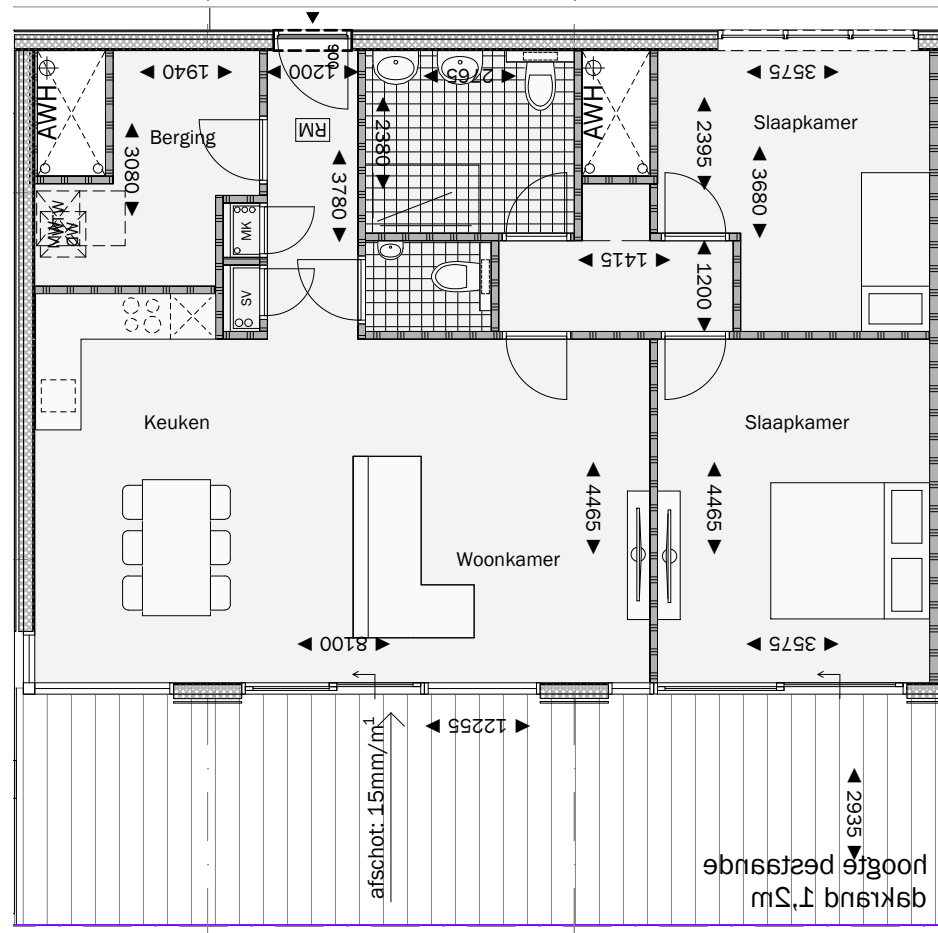


GBO = 95.9m²

Woningtype Q1
3e verdieping

project: WEST507 Westzeedijk 507, Rotterdam	opdrachtgever: Waterford Investments & Vervat Vastgoed Rotterdam	onderwerp: Nieuwe situatie Woningtype Q1	projectnummer: 16034	formaat: A3	schaal: 1:100	datum: 22.12.2017	tekeningnummer: D0.170
---	--	--	-------------------------	----------------	------------------	----------------------	---------------------------

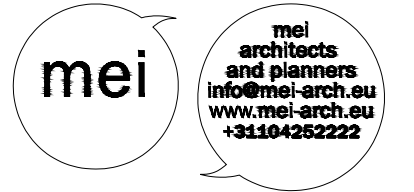


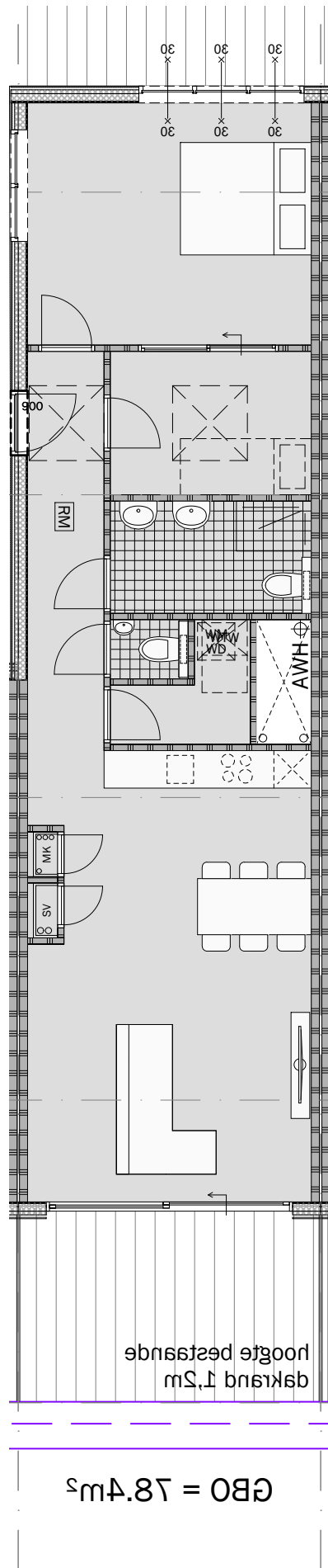


GBO = 27.9m

Woningtype Q2
3e verdieping

project: WEST507 Westzeedijk 507, Rotterdam	opdrachtgever: Waterford Investments & Vervat Vastgoed Rotterdam	onderwerp: Nieuwe situatie Woningtype Q2	projectnummer: 16034	formaat: A3	schaal: 1:100	datum: 22.12.2017	tekeningnummer: D0.170
---	--	--	-------------------------	----------------	------------------	----------------------	---------------------------

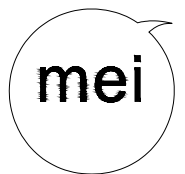


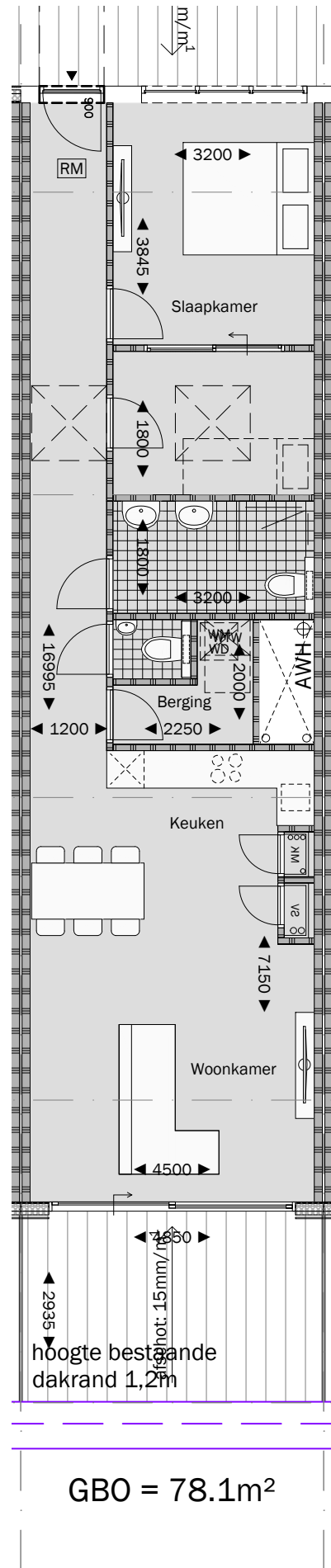


Woningtype R1
3e verdieping

GBO = 78.4m

project: WEST507 Westzeedijk 507, Rotterdam	opdrachtgever: Waterford Investments & Vervat Vastgoed Rotterdam	onderwerp: Nieuwe situatie Woningtype R1	projectnummer: 16034	formaat: A3	schaal: 1:100	datum: 22.12.2017	tekeningnummer: D0.170
--	---	---	--------------------------------	-----------------------	-------------------------	-----------------------------	----------------------------------

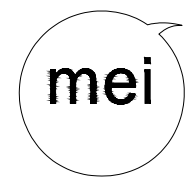


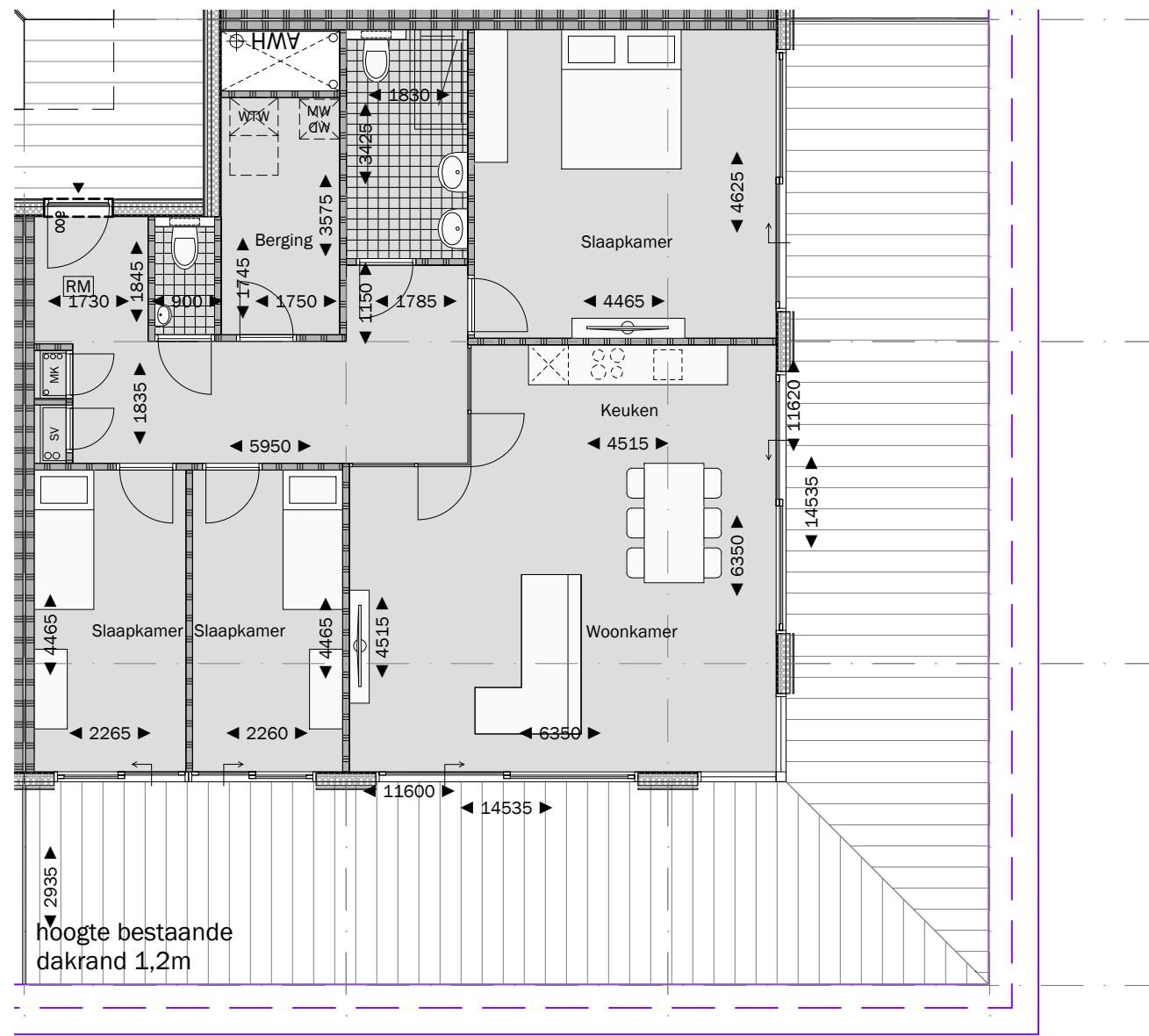


Woningtype R2
3e verdieping

GBO = 78.1m²

project: WEST507 Westzeedijk 507, Rotterdam	opdrachtgever: Waterford Investments & Vervat Vastgoed Rotterdam	onderwerp: Nieuwe situatie Woningtype R2	projectnummer: 16034	formaat: A3	schaal: 1:100	datum: 22.12.2017	tekeningnummer: D0.170
---	--	--	-------------------------	----------------	------------------	----------------------	---------------------------

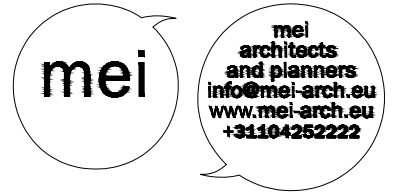


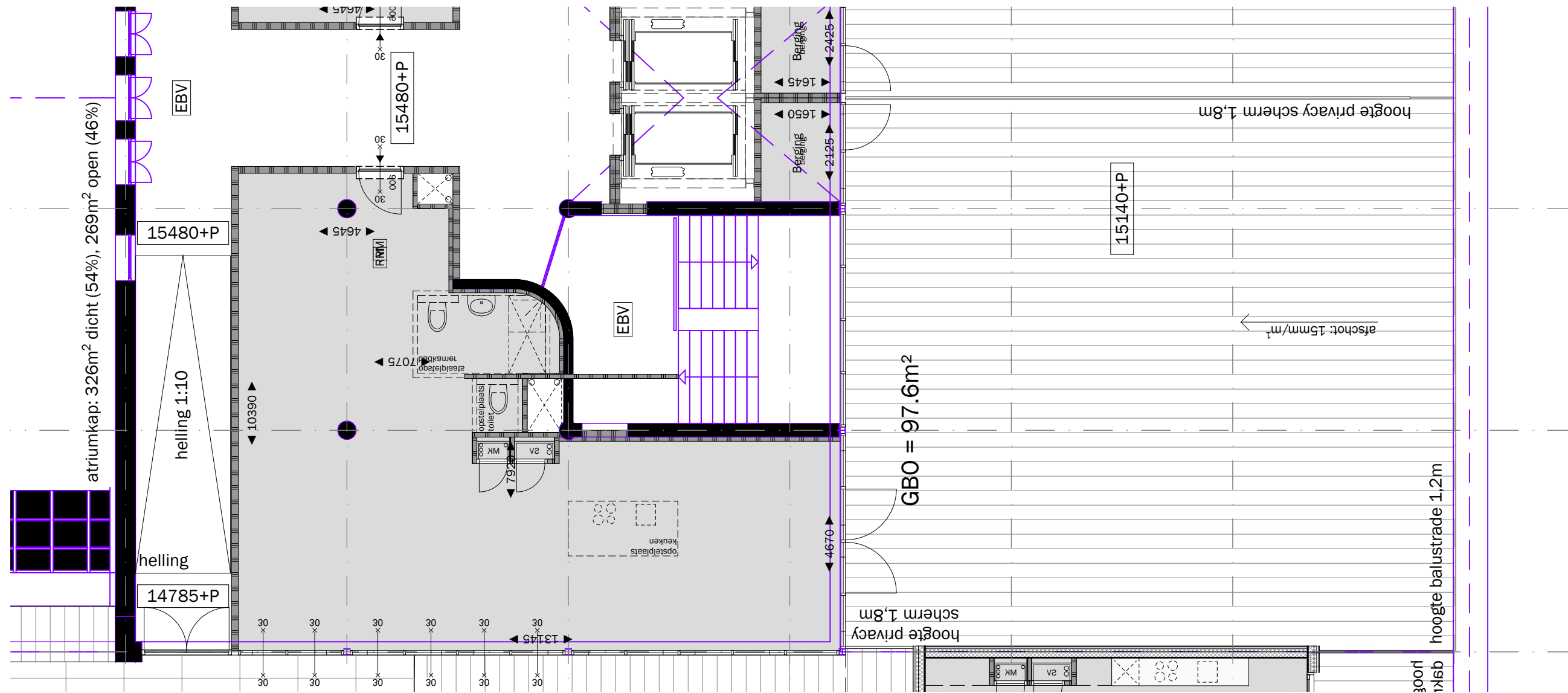


GBO = 115.4m²

Woningtype S1
3e verdieping

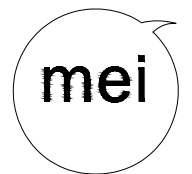
project: WEST507 Westzeedijk 507, Rotterdam	opdrachtgever: Waterford Investments & Vervat Vastgoed Rotterdam	onderwerp: Nieuwe situatie Woningtype S1	projectnummer: 16034	formaat: A3	schaal: 1:100	datum: 22.12.2017	tekeningnummer: D0.170
--	---	---	--------------------------------	-----------------------	-------------------------	-----------------------------	----------------------------------



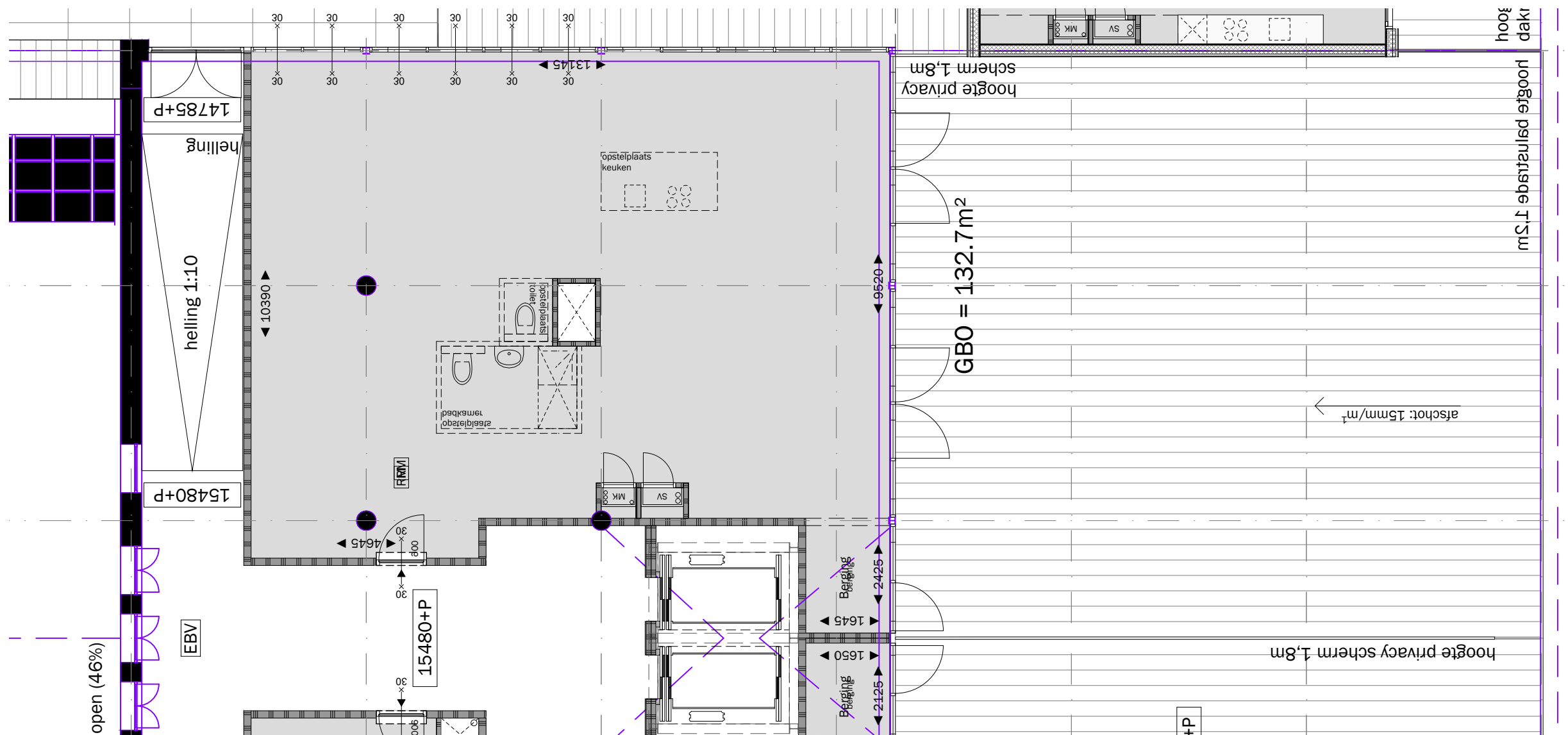


Woningtype Z1
3e verdieping

project: WEST507 Westzeedijk 507, Rotterdam	opdrachtgever: Waterford Investments & Vervat Vastgoed Rotterdam	onderwerp: Nieuwe situatie Woningtype Z1	projectnummer: 16034	formaat: A3	schaal: 1:100	datum: 22.12.2017	tekeningnummer: D0.170
---	--	--	-------------------------	----------------	------------------	----------------------	---------------------------



mei
architects
and planners
info@mei-arch.eu
www.mei-arch.eu
+31104252222



Woningtype Z2
3e verdieping

project: WEST507 Westzeedijk 507, Rotterdam	opdrachtgever: Waterford Investments & Vervat Vastgoed Rotterdam	onderwerp: Nieuwe situatie Woningtype Z2	projectnummer: 16034	formaat: A3	schaal: 1:100	datum: 22.12.2017	tekeningnummer: D0.170
---	--	--	-------------------------	----------------	------------------	----------------------	---------------------------

