

CONCEPT VERKAVELINGSPLAN OVERSCHIESE KLEIWEG 595

Project: Realiseren van 2 vrijstaande villa's en 5 twee-onder-een kap woningen

Locatie: Overschie Kleiweg 595, Rotterdam

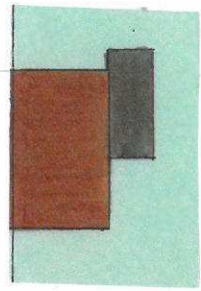
Projectnummer: 16.1244

Datum: 11-05-2016

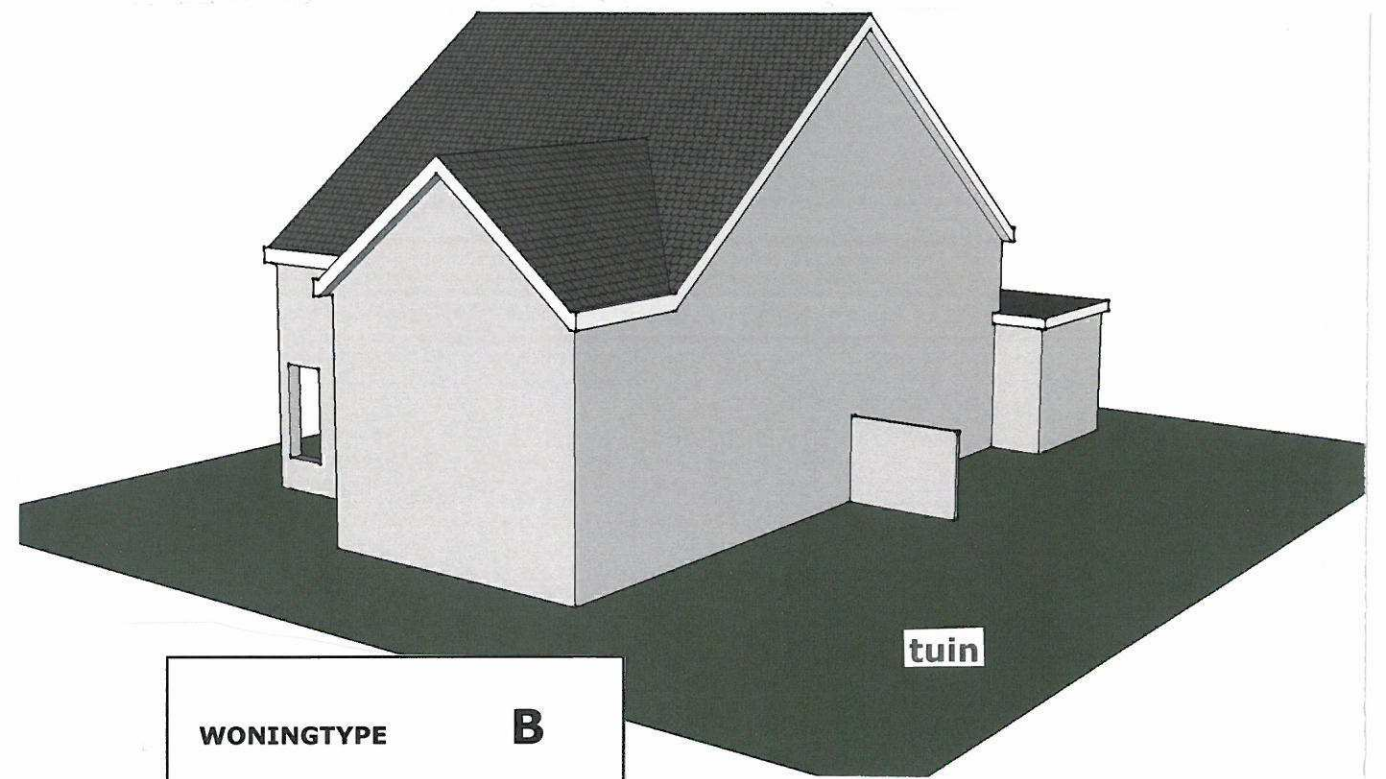
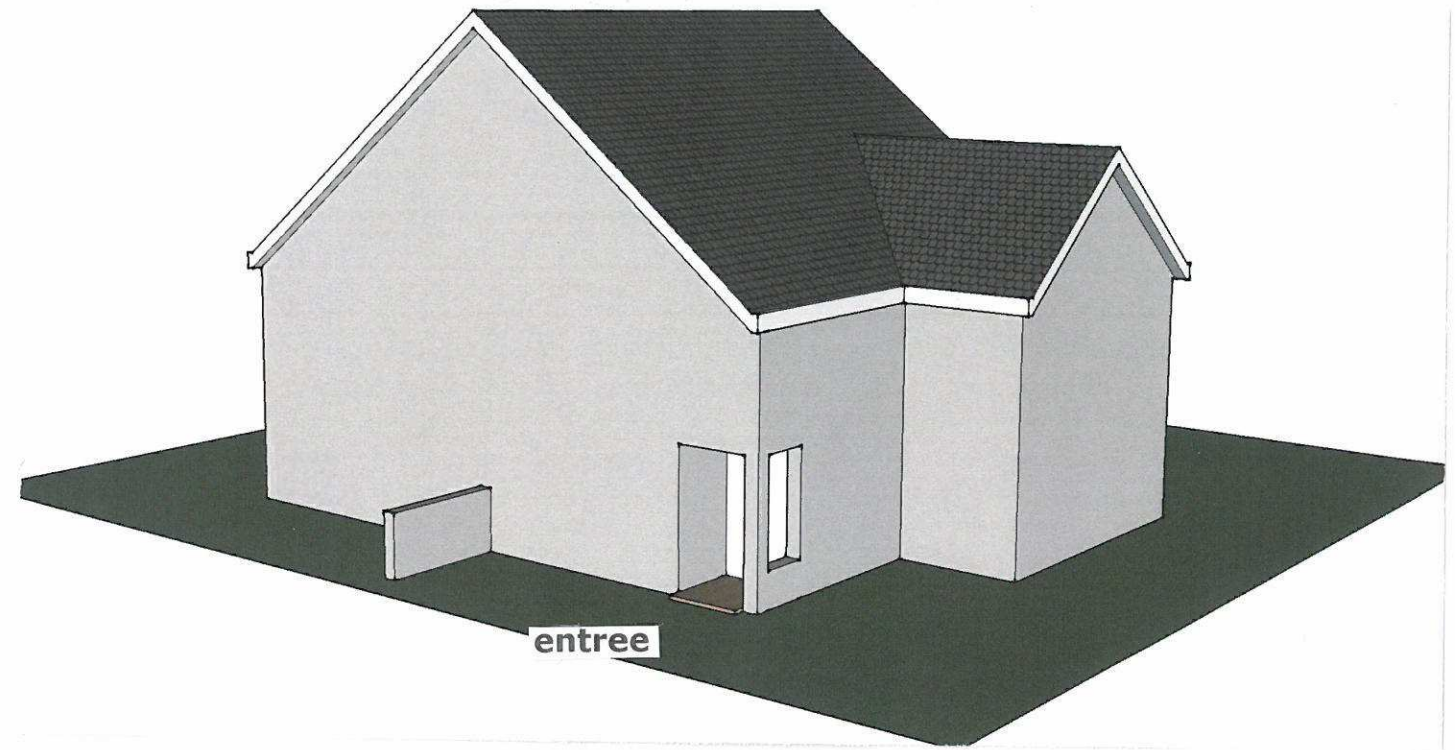
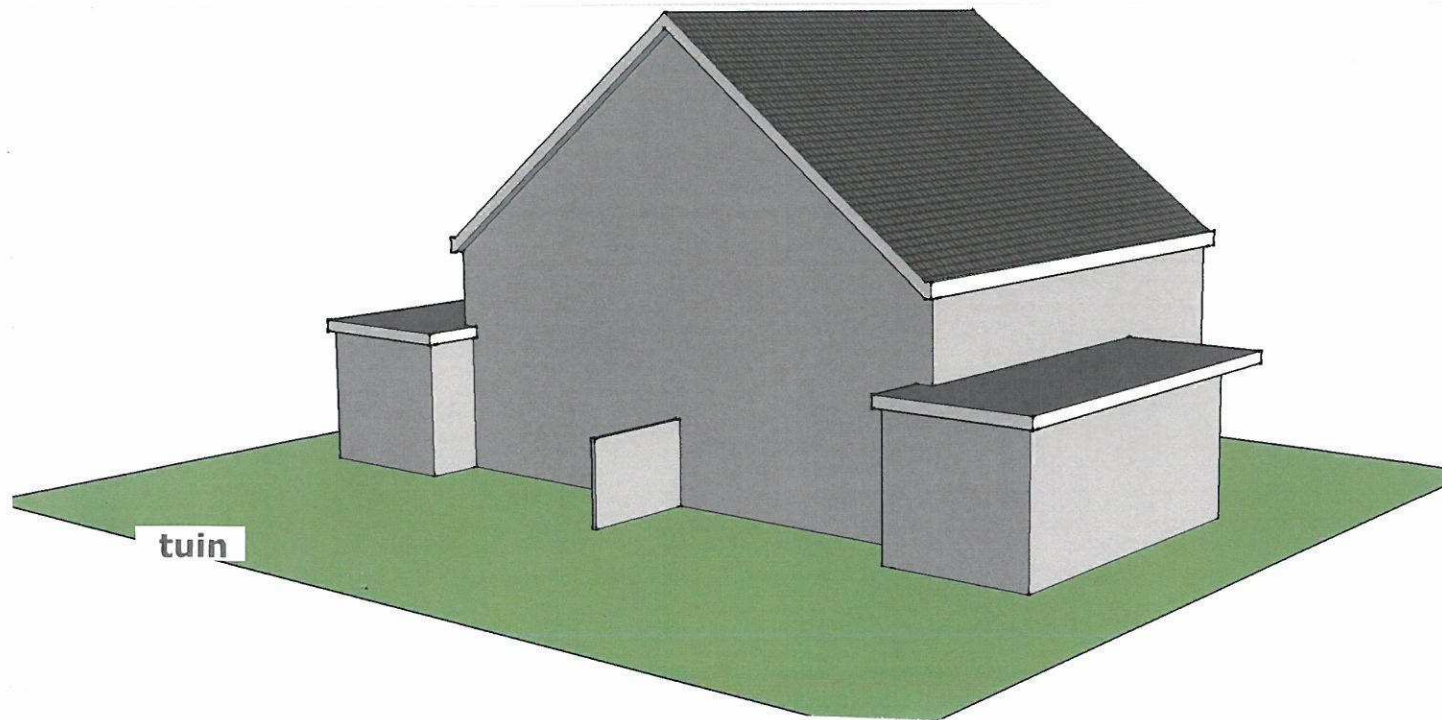
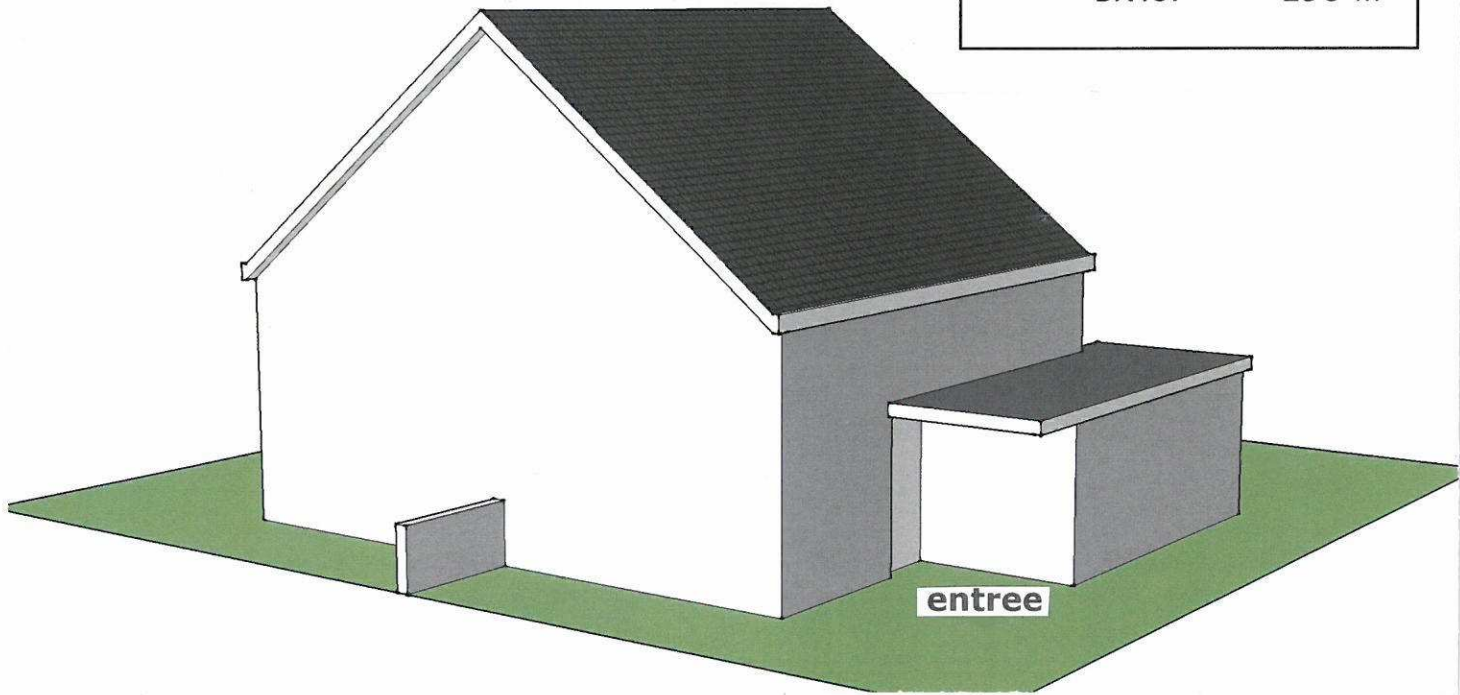




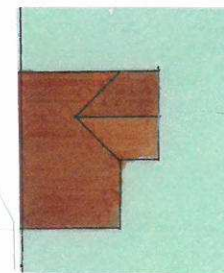
OVERSCHIESE KLEIWEG - OVERSCHIE(schaal 1:500)

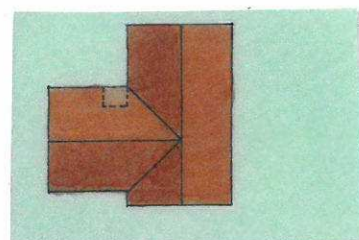


<b>WONINGTYPE</b>	<b>A</b>
goothoogte	<b>5,00</b> m
nokhoogte	<b>10,00</b> m
B.V.O.	<b>190</b> m <sup>2</sup>

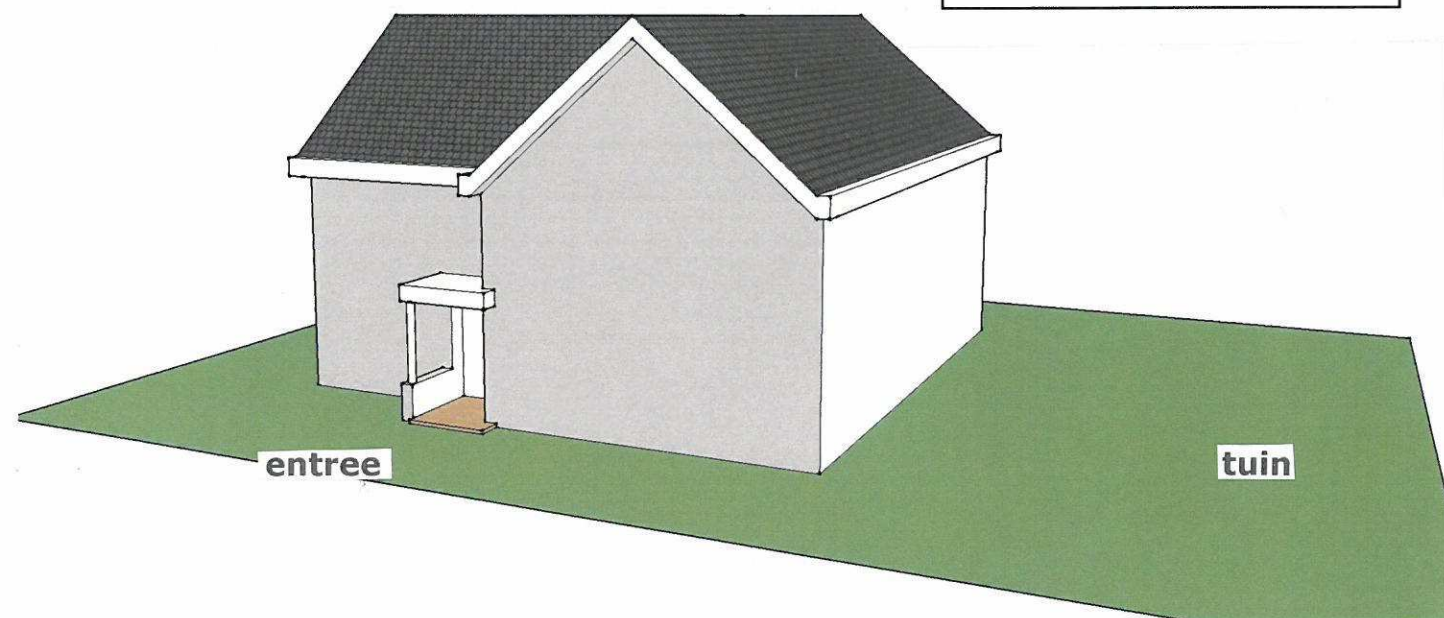


<b>WONINGTYPE</b>	<b>B</b>
goothoogte	<b>5,00</b> m
nokhoogte	<b>10,00</b> m
B.V.O.	<b>230</b> m <sup>2</sup>



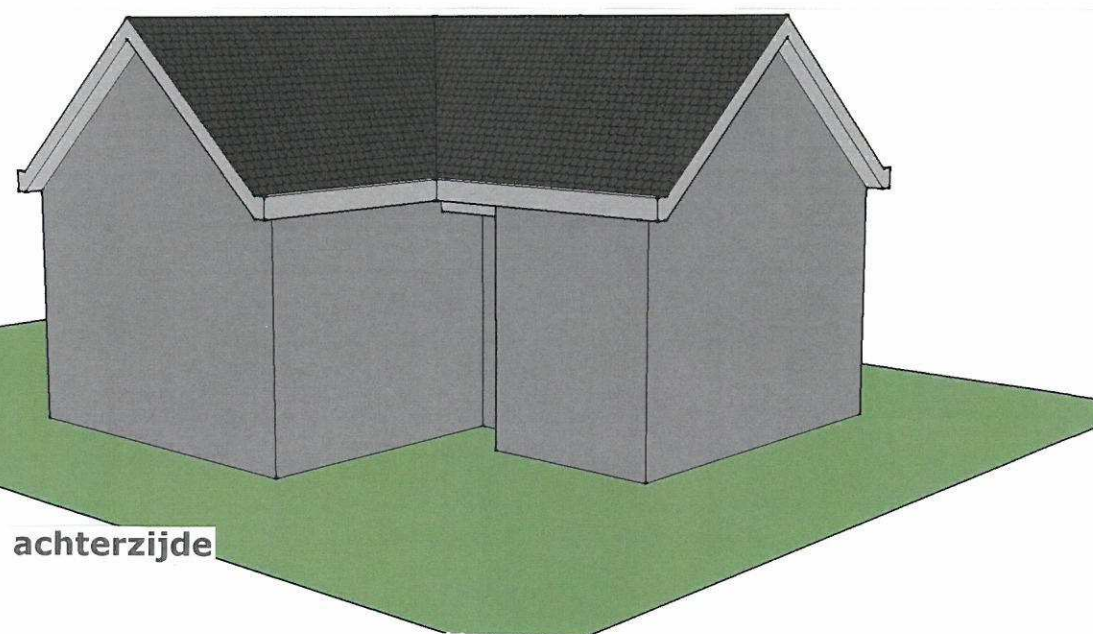


<b>WONINGTYPE</b>	<b>C</b>
goothoogte	<b>5,00</b> m
nokhoogte	<b>8,00</b> m
B.V.O.	<b>245</b> m <sup>2</sup>



entree

tuin



achterzijde

<b>PERCEEL-OPPERVLAK</b>			
<b>nummer</b>	won.type A	won.type B	won.type C
1			540
2	320		
3	290		
4	300		
5	300		
6		310	
7	310		
8	320		
9	330		
10			560
11		440	
12	420		

**totaal uit te geven grondoppervlak : 4.440**

totaal openbaar grondoppervlak : 1.650 27,1 %

