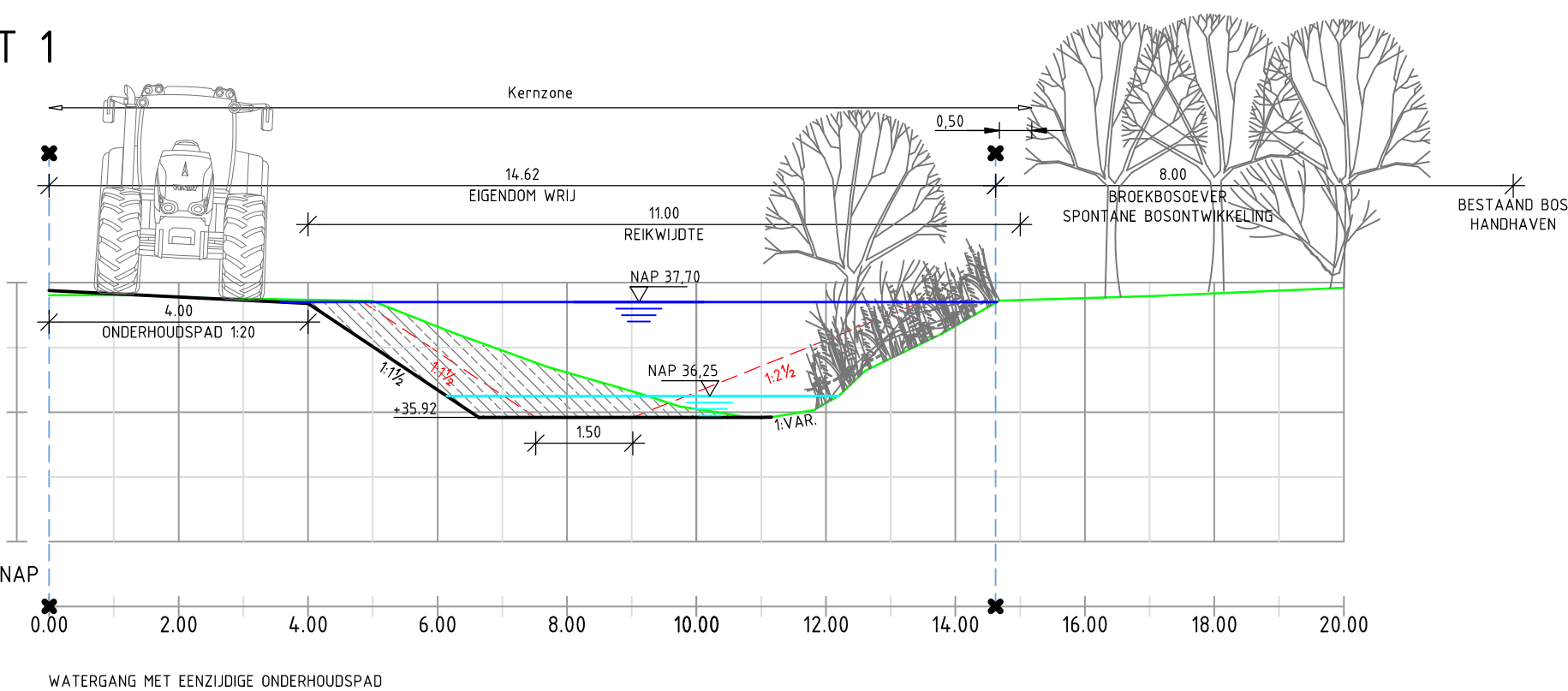
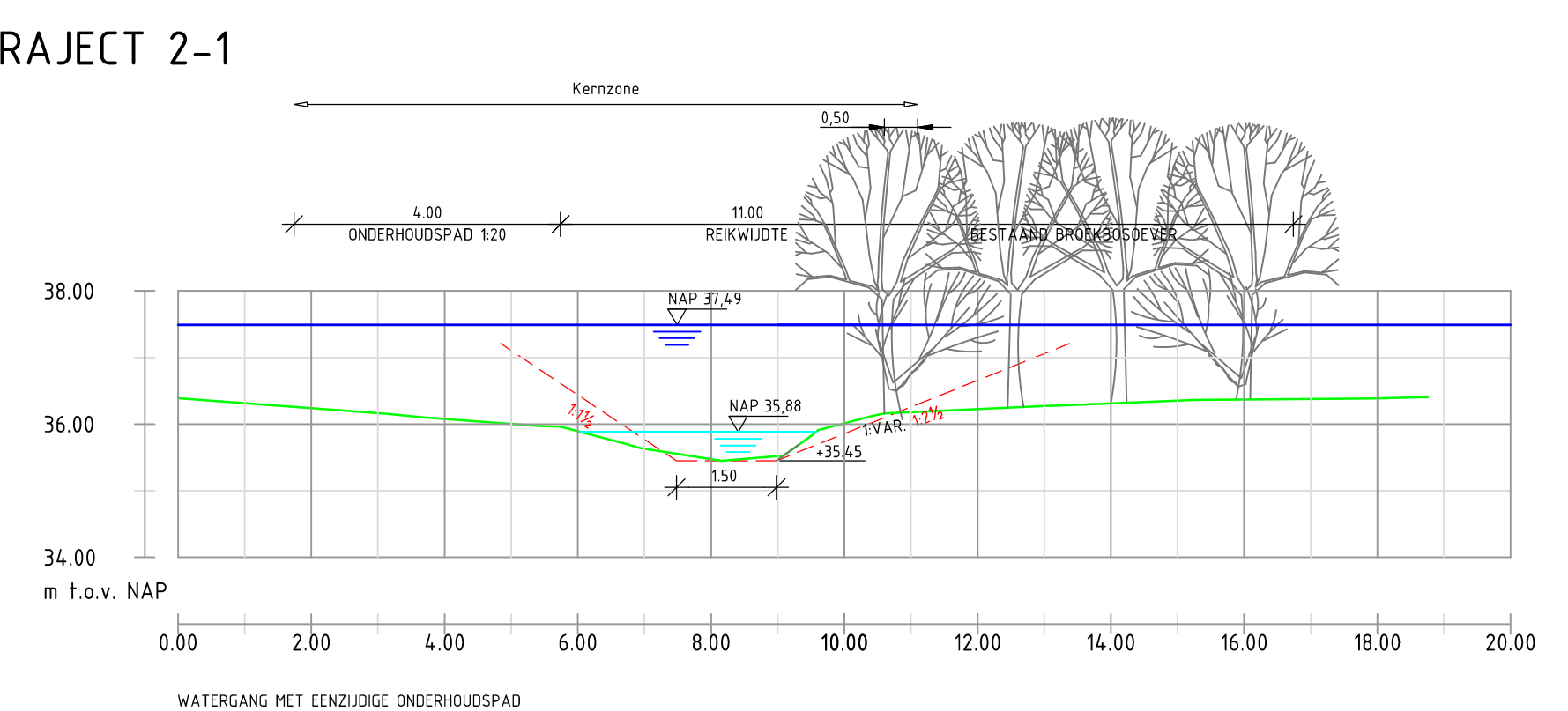


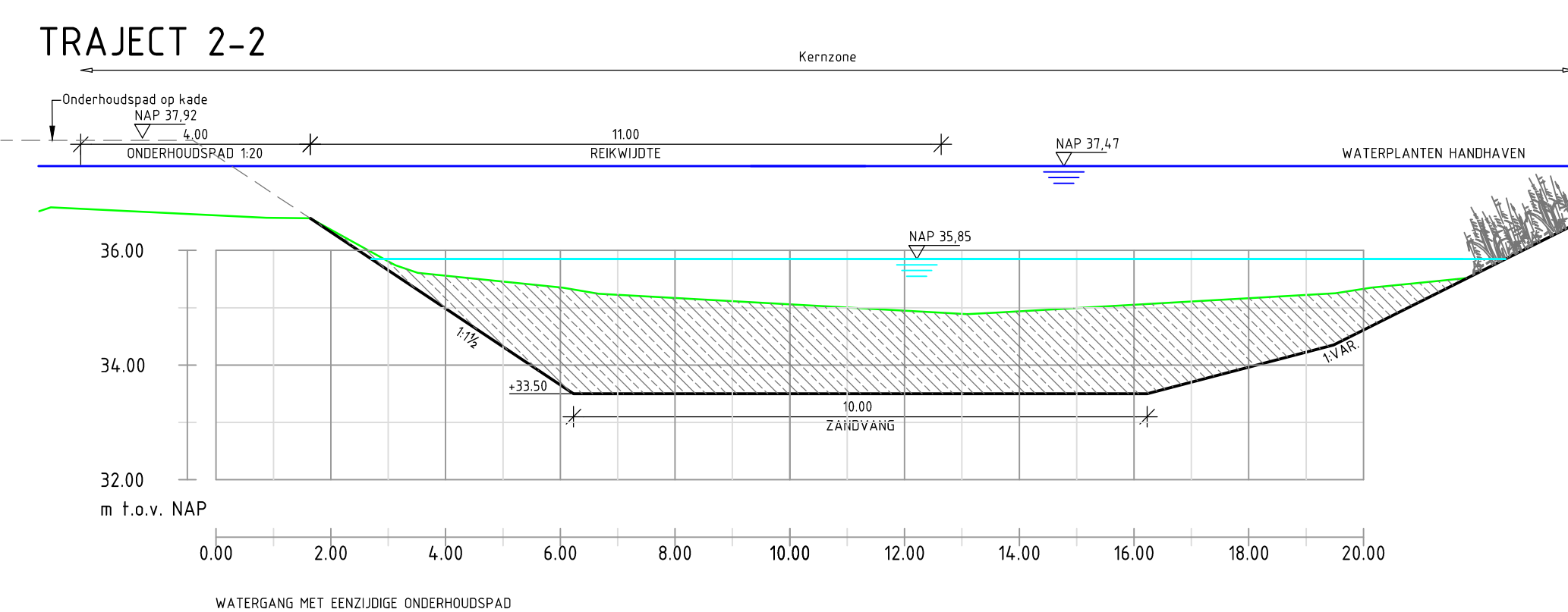
TRAJECT 1



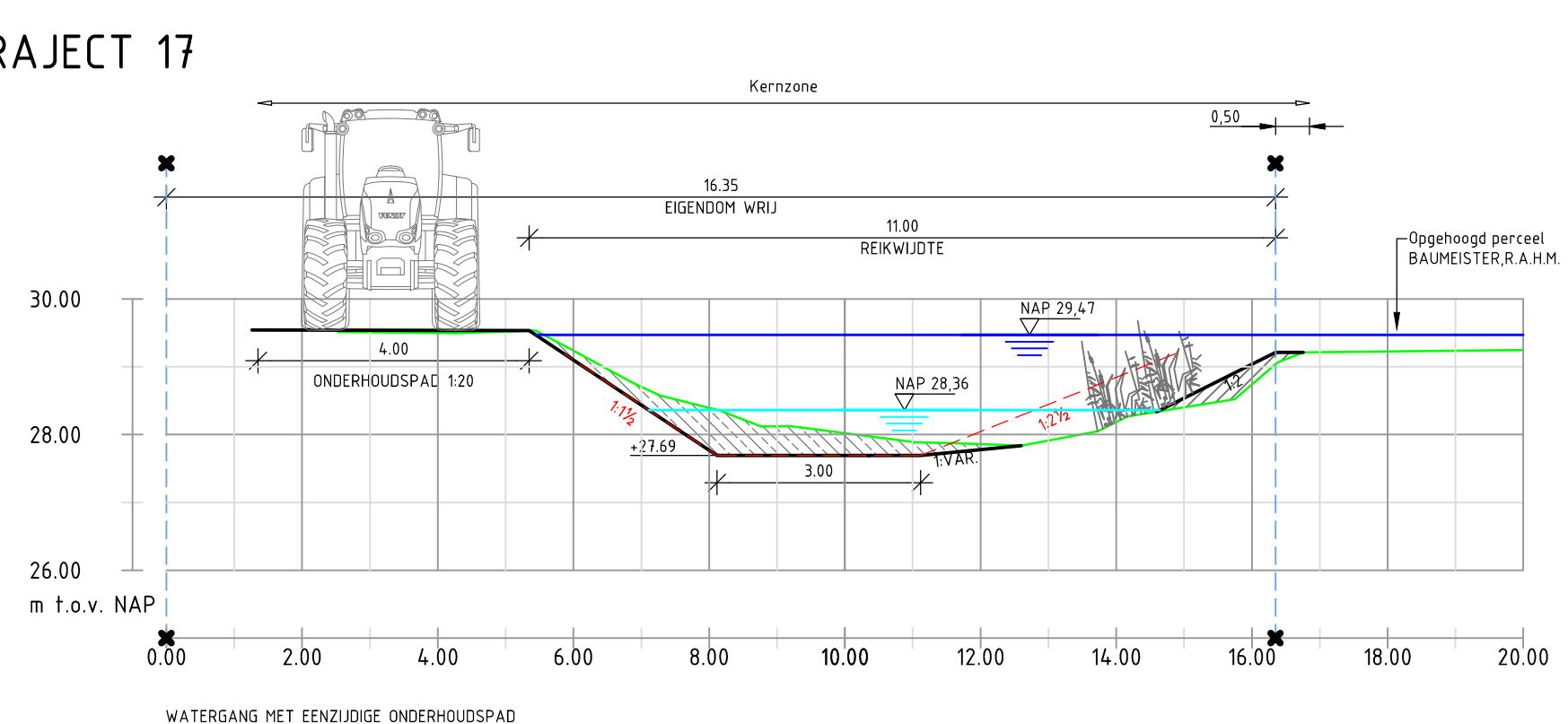
TRAJECT 2-1



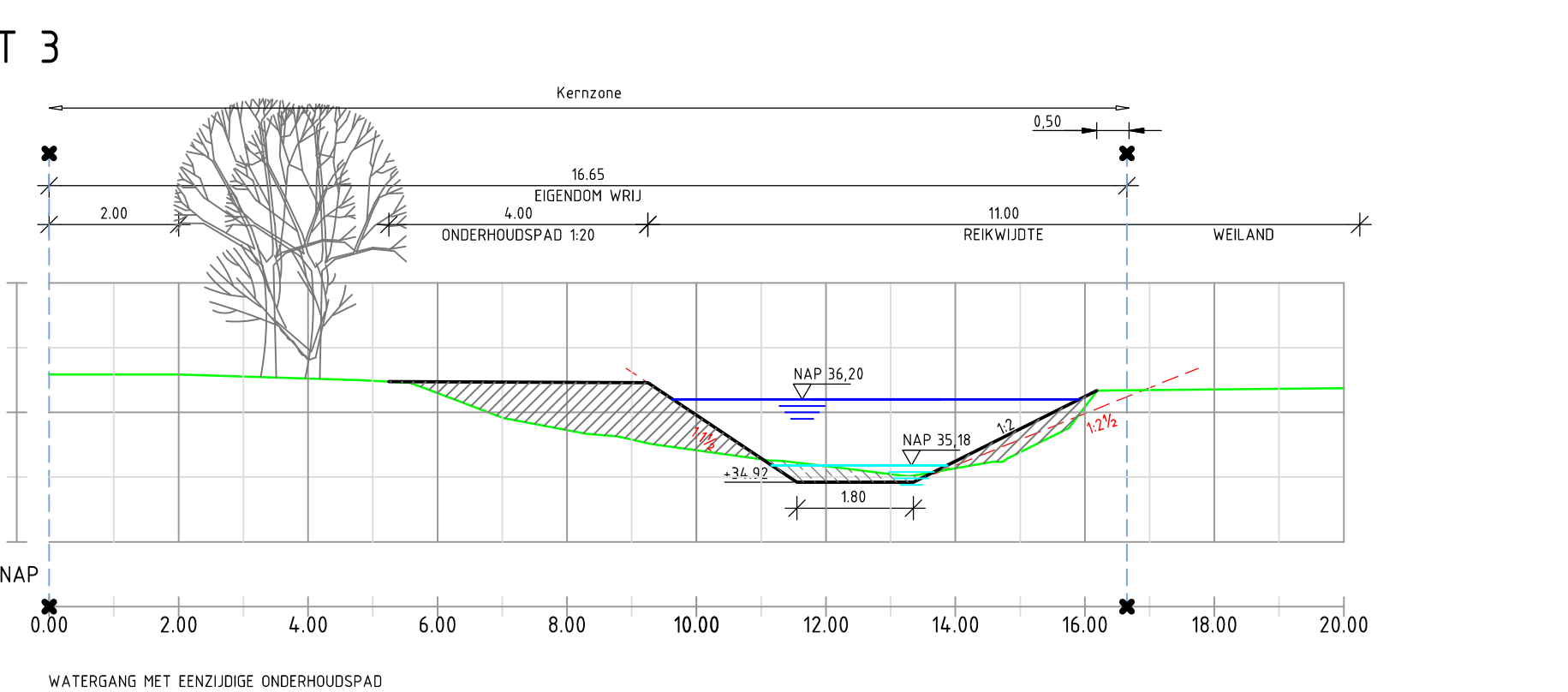
TRAJECT 2-2



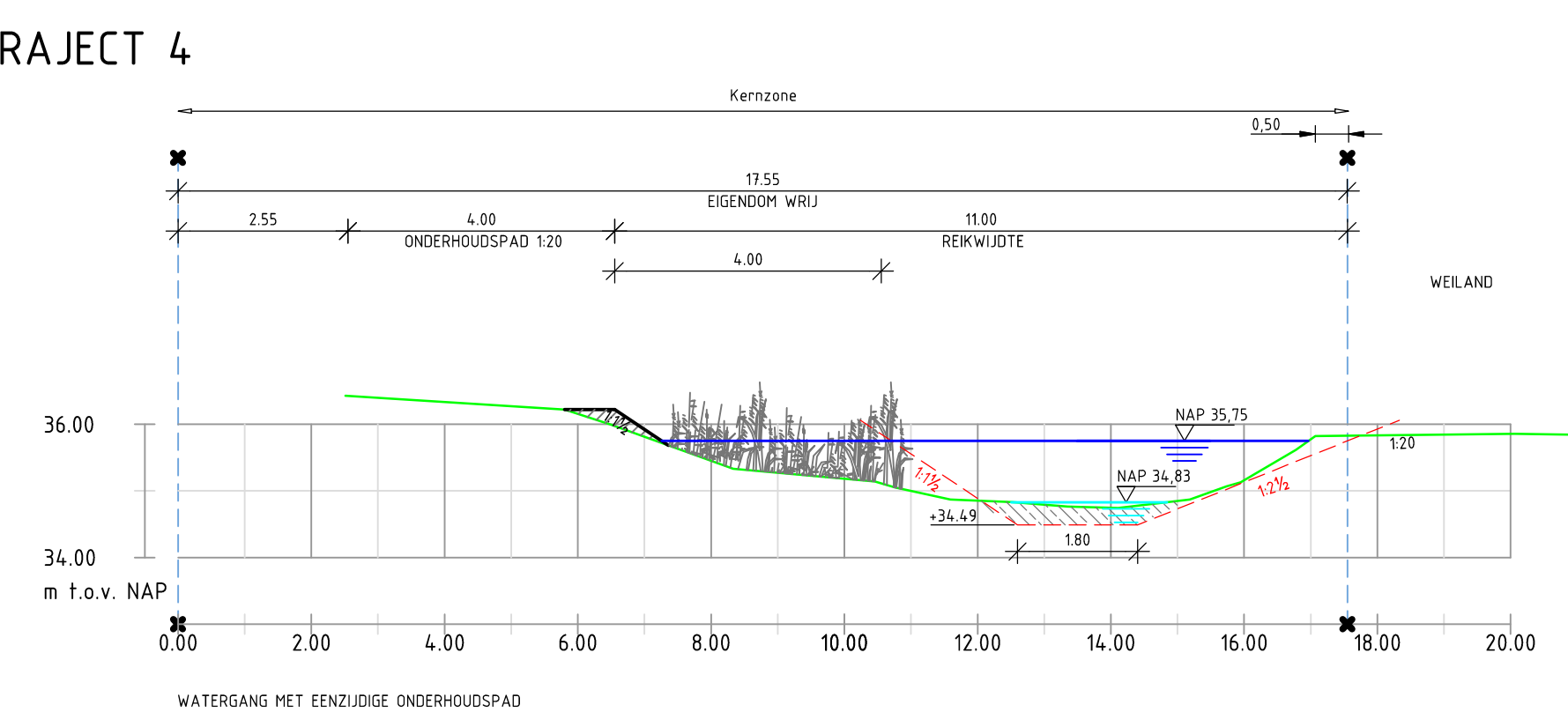
TRAJECT 17



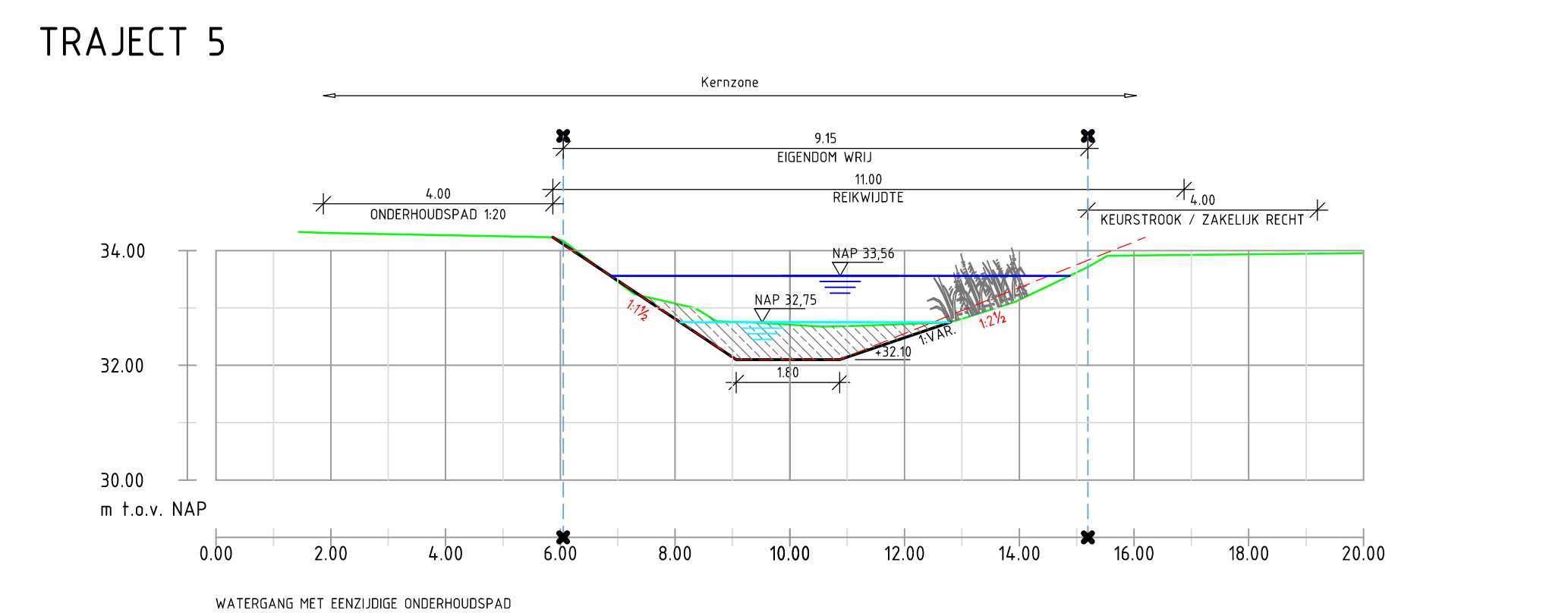
TRAJECT 3



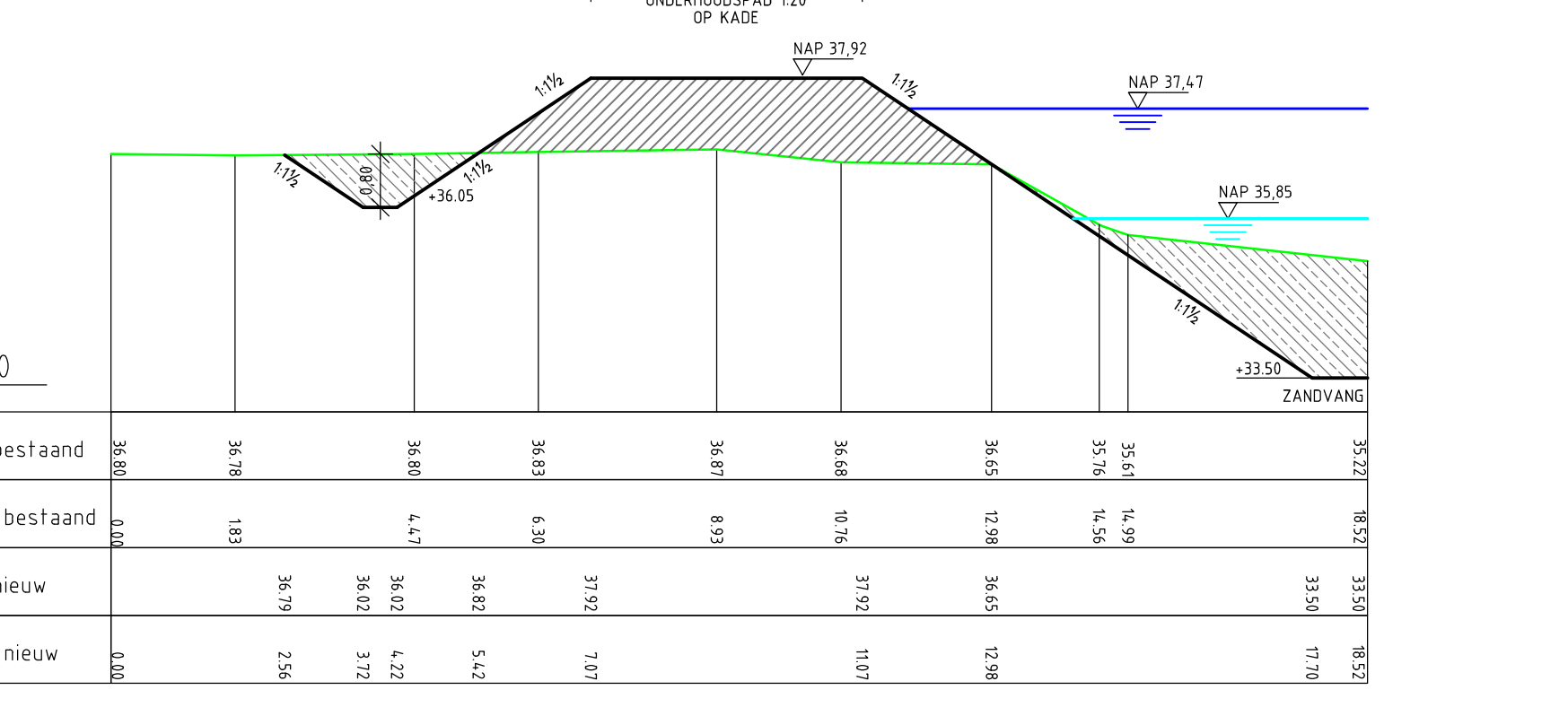
TRAJECT 4



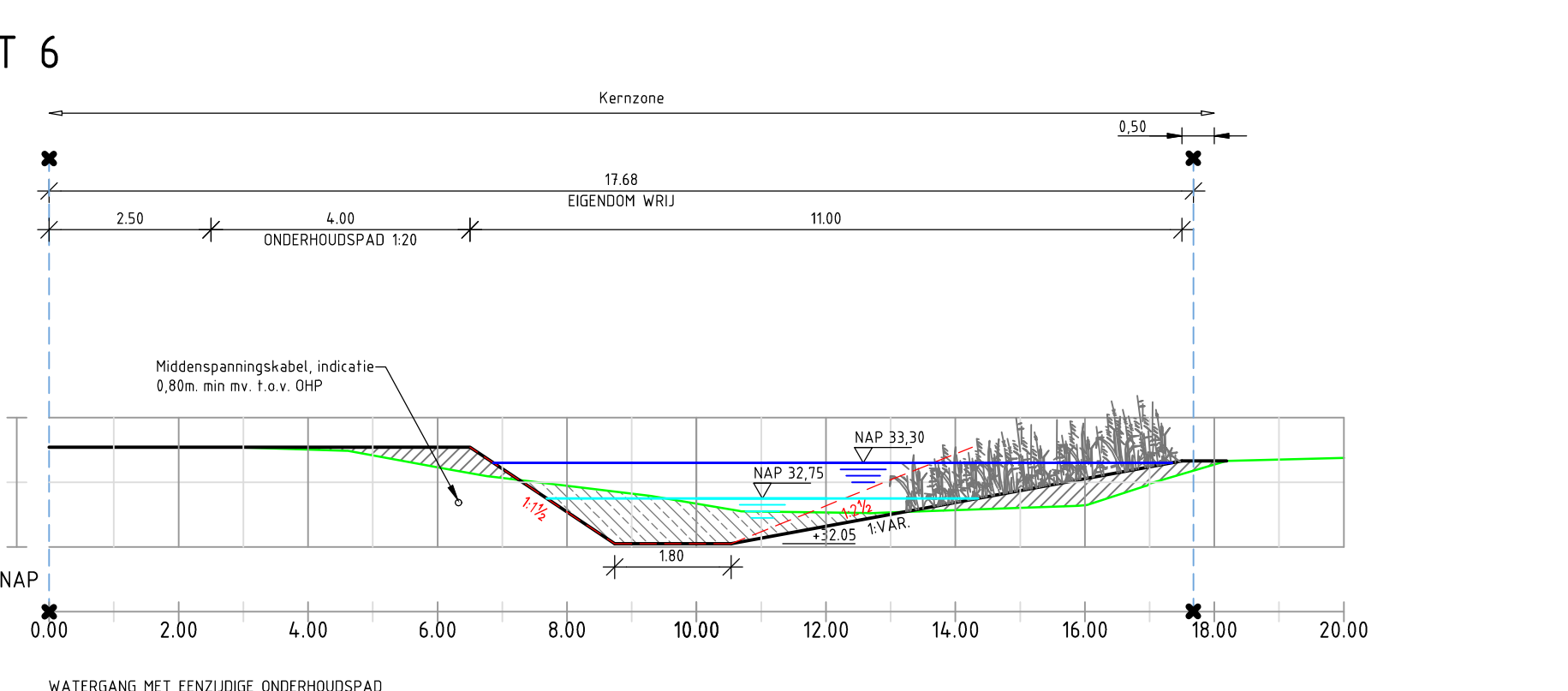
TRAJECT 5



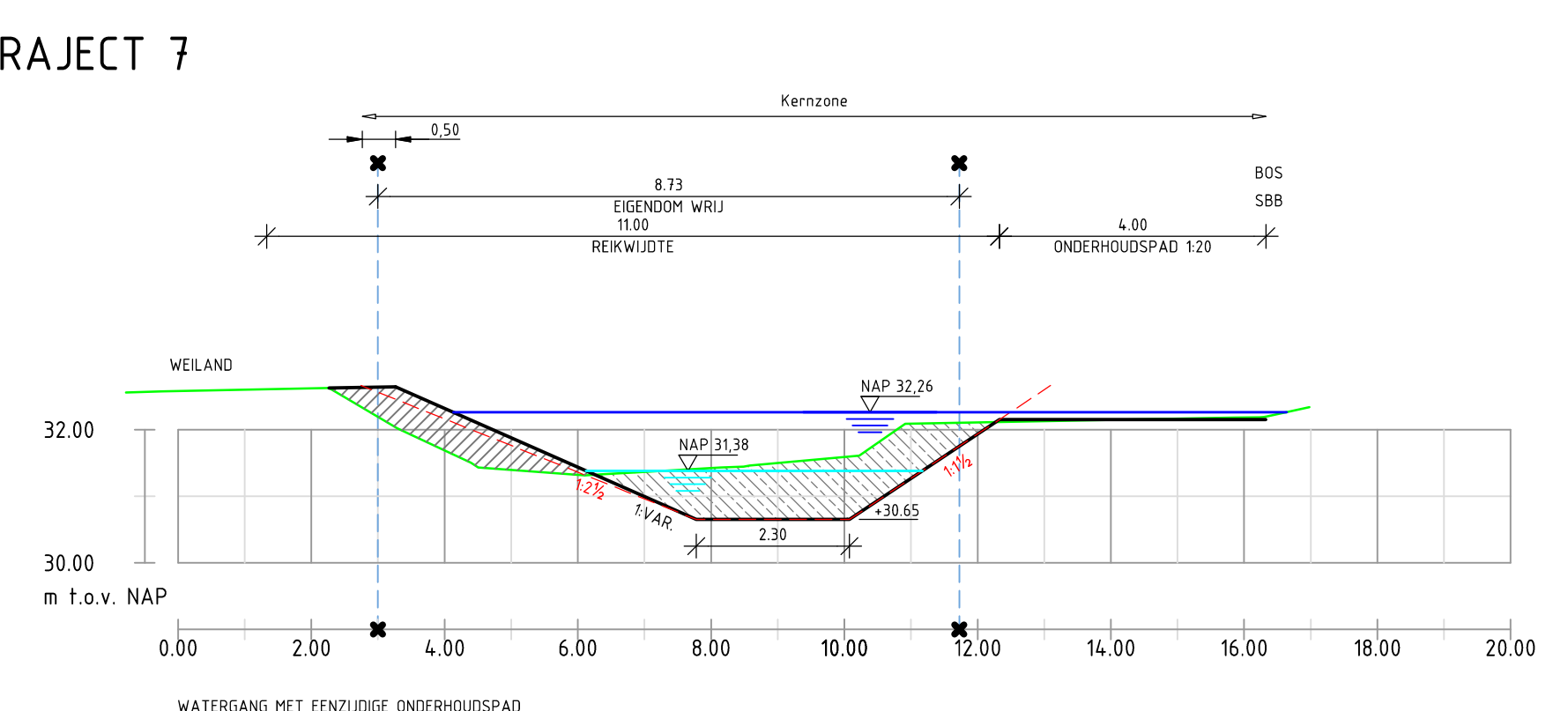
TRAJECT 17



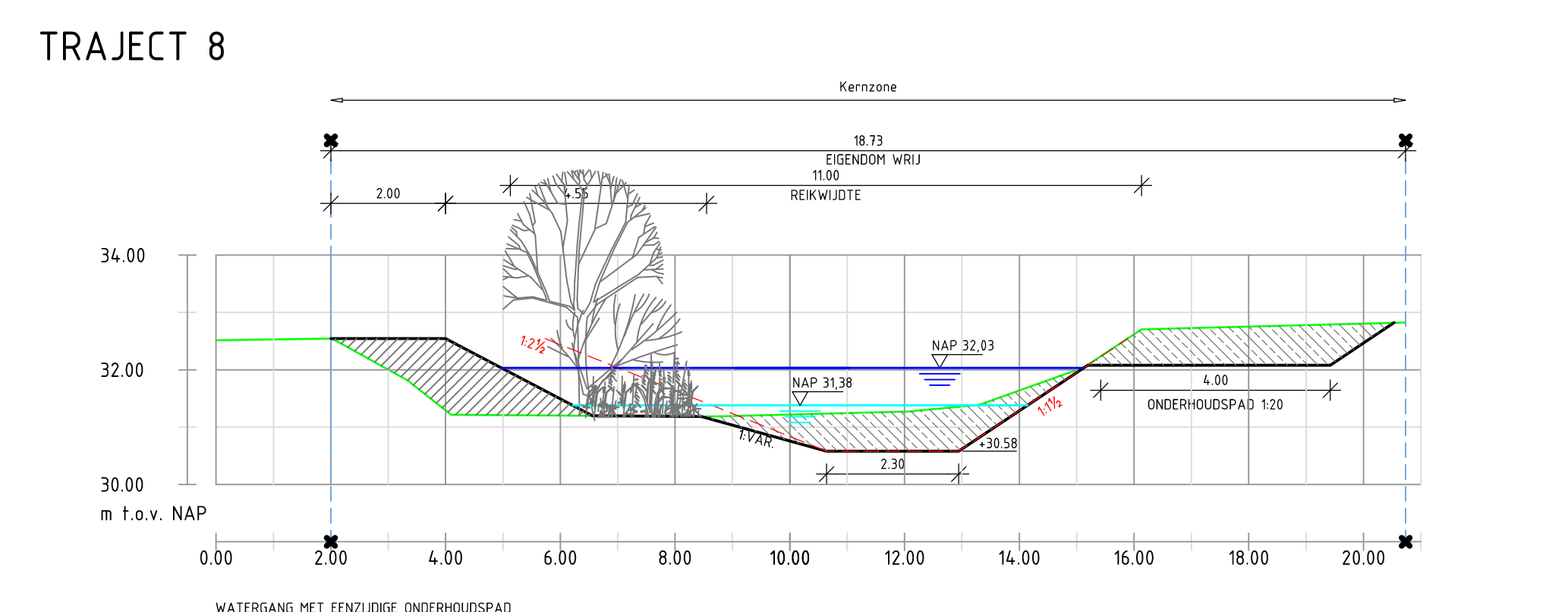
TRAJECT 6



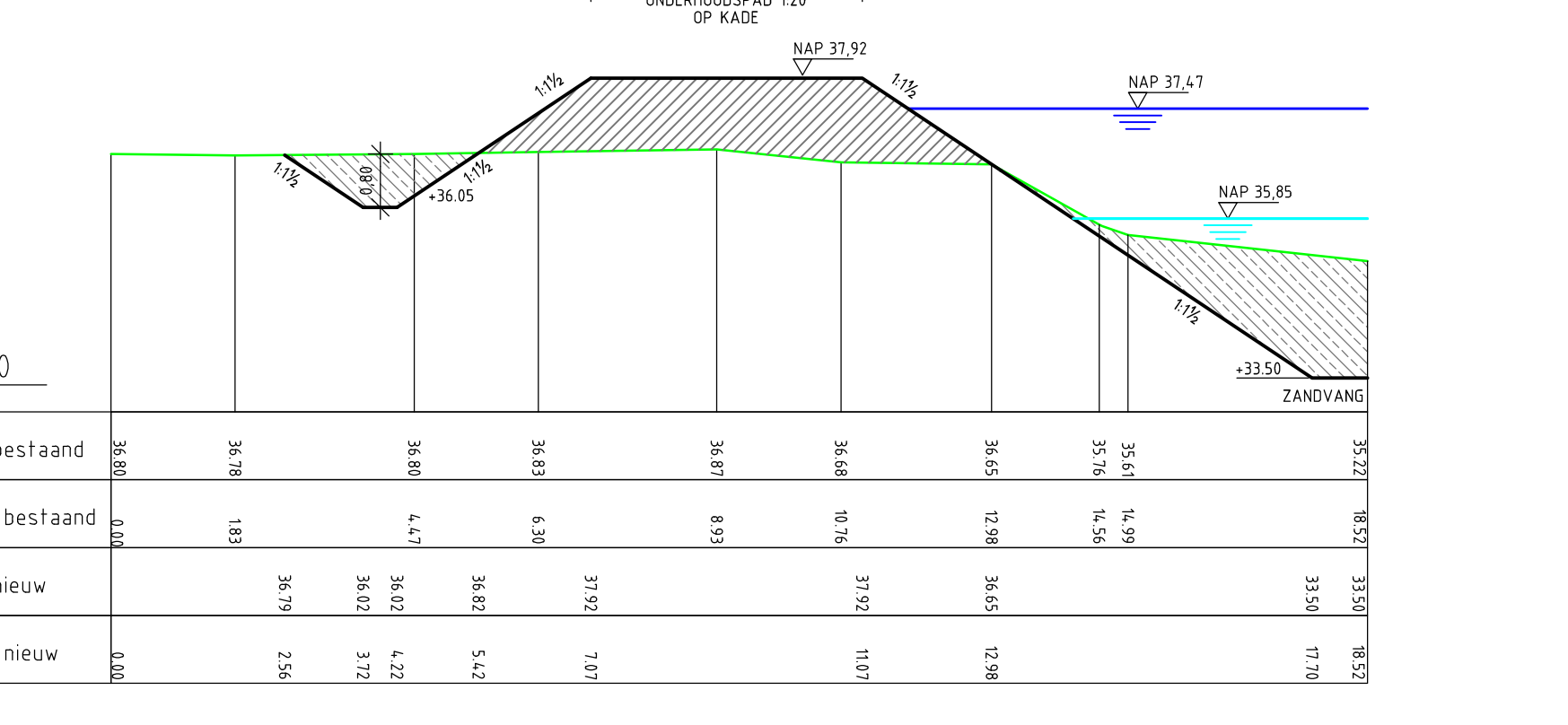
TRAJECT 7



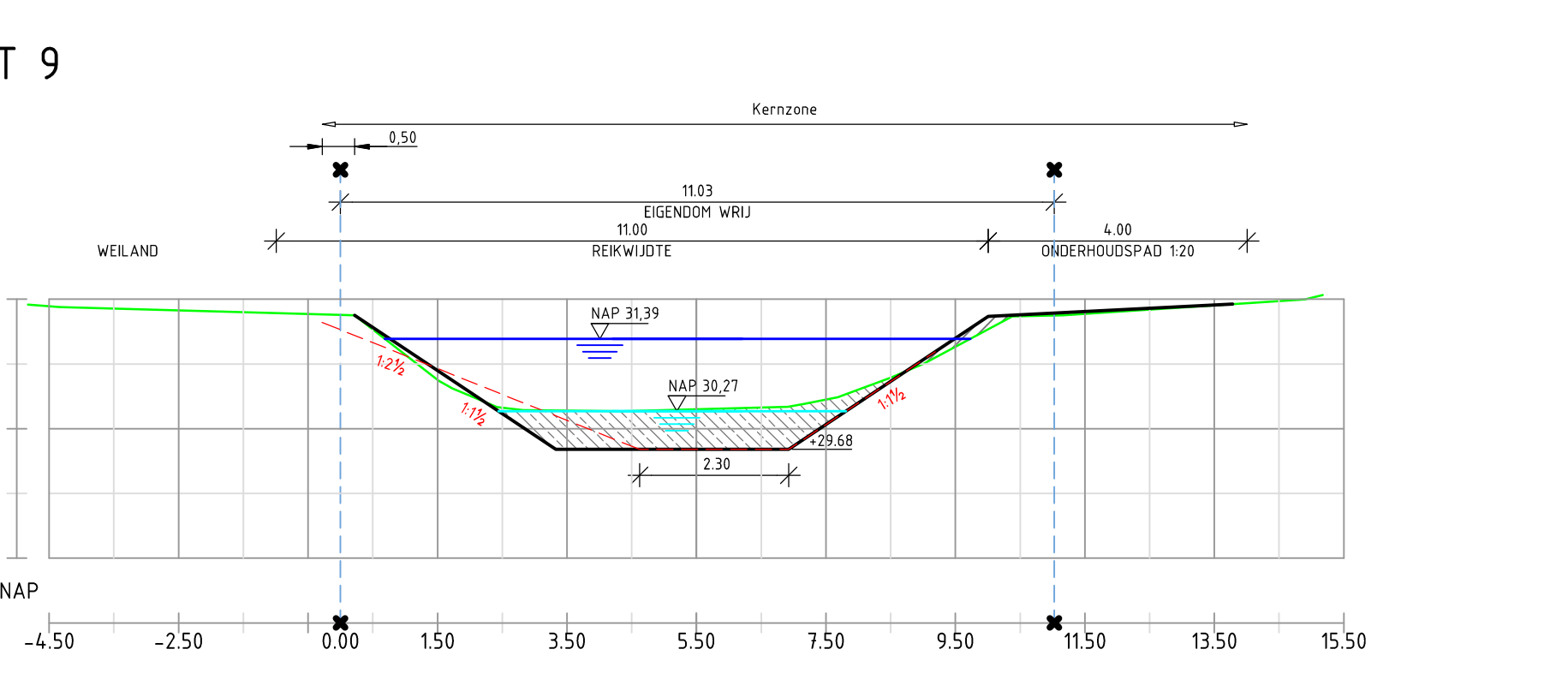
TRAJECT 8



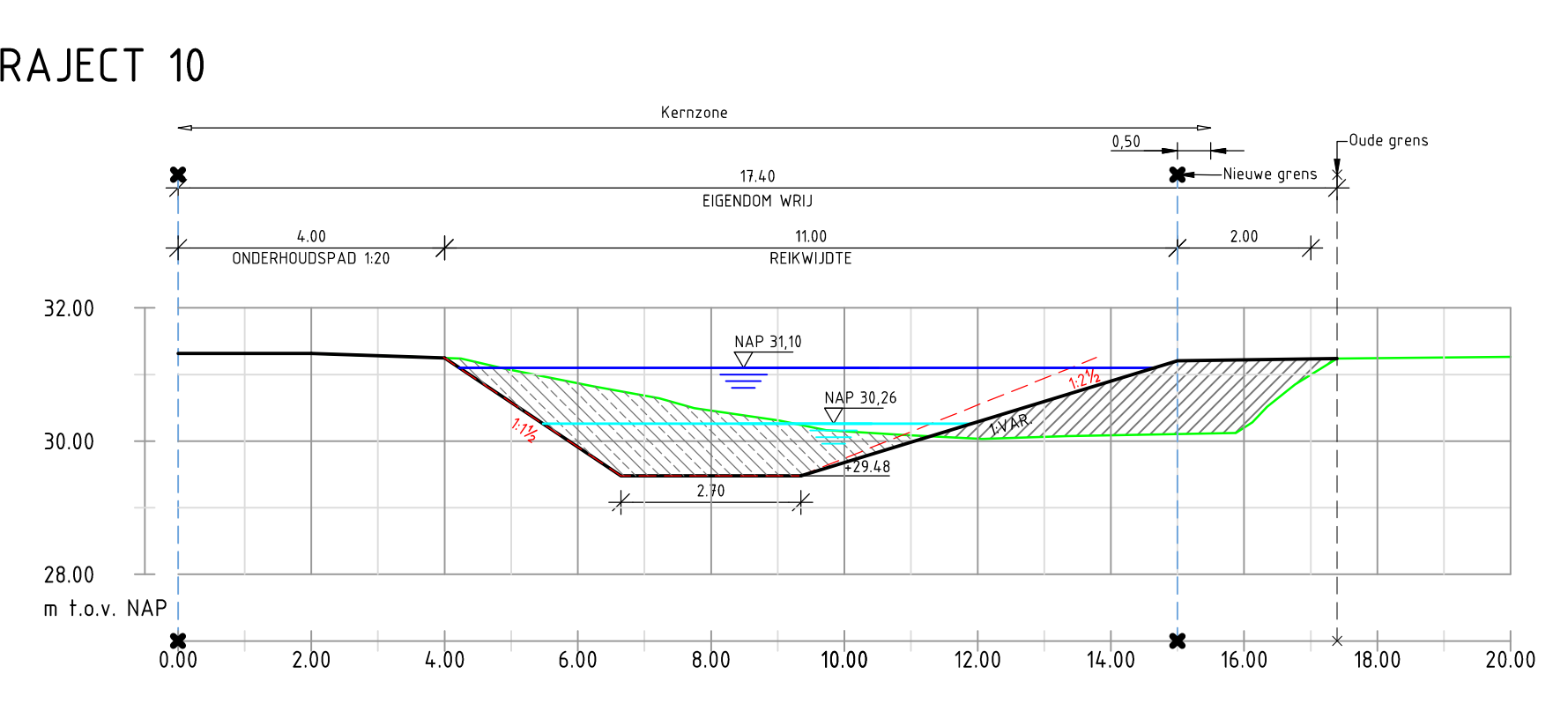
TRAJECT 2-2a



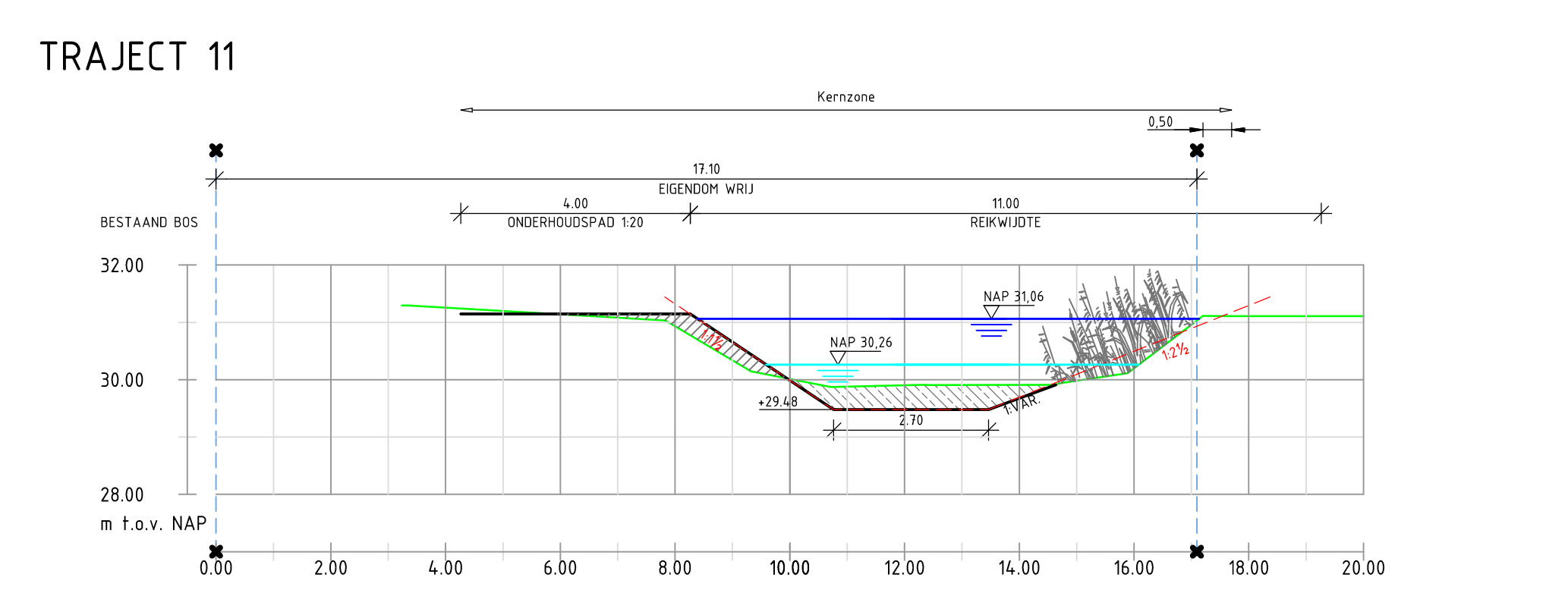
TRAJECT 9



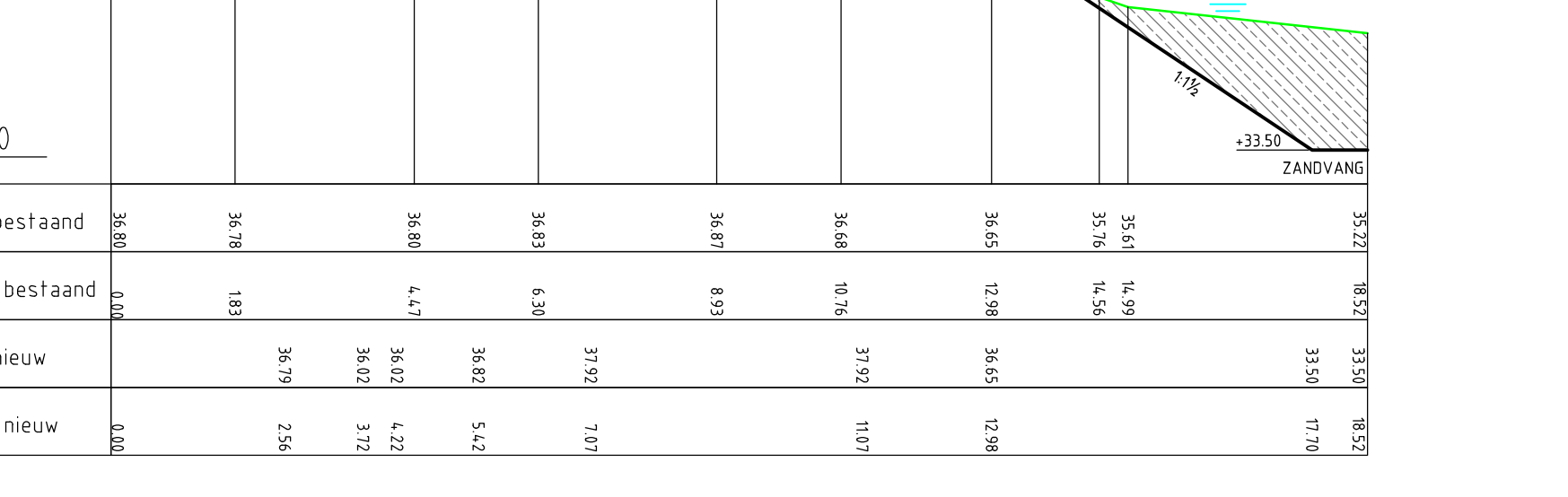
TRAJECT 10



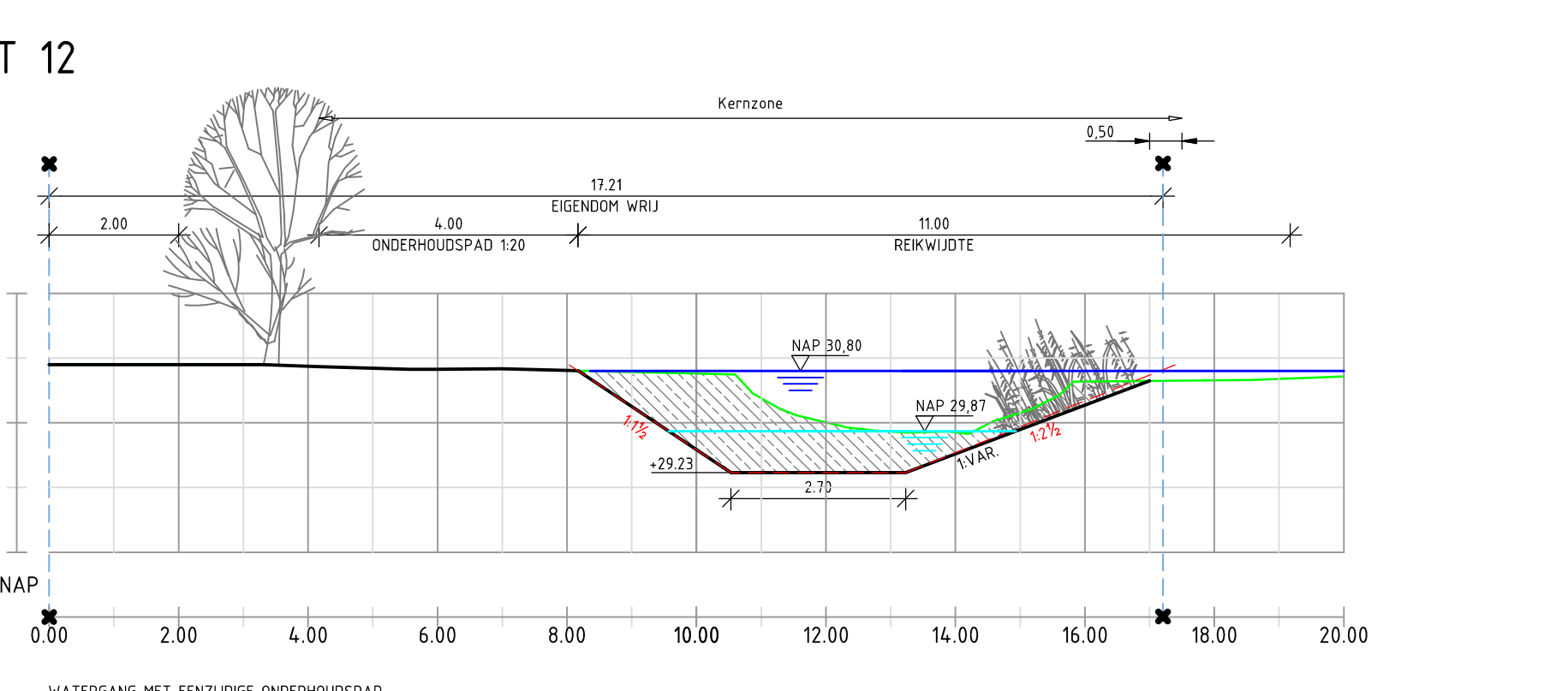
TRAJECT 11



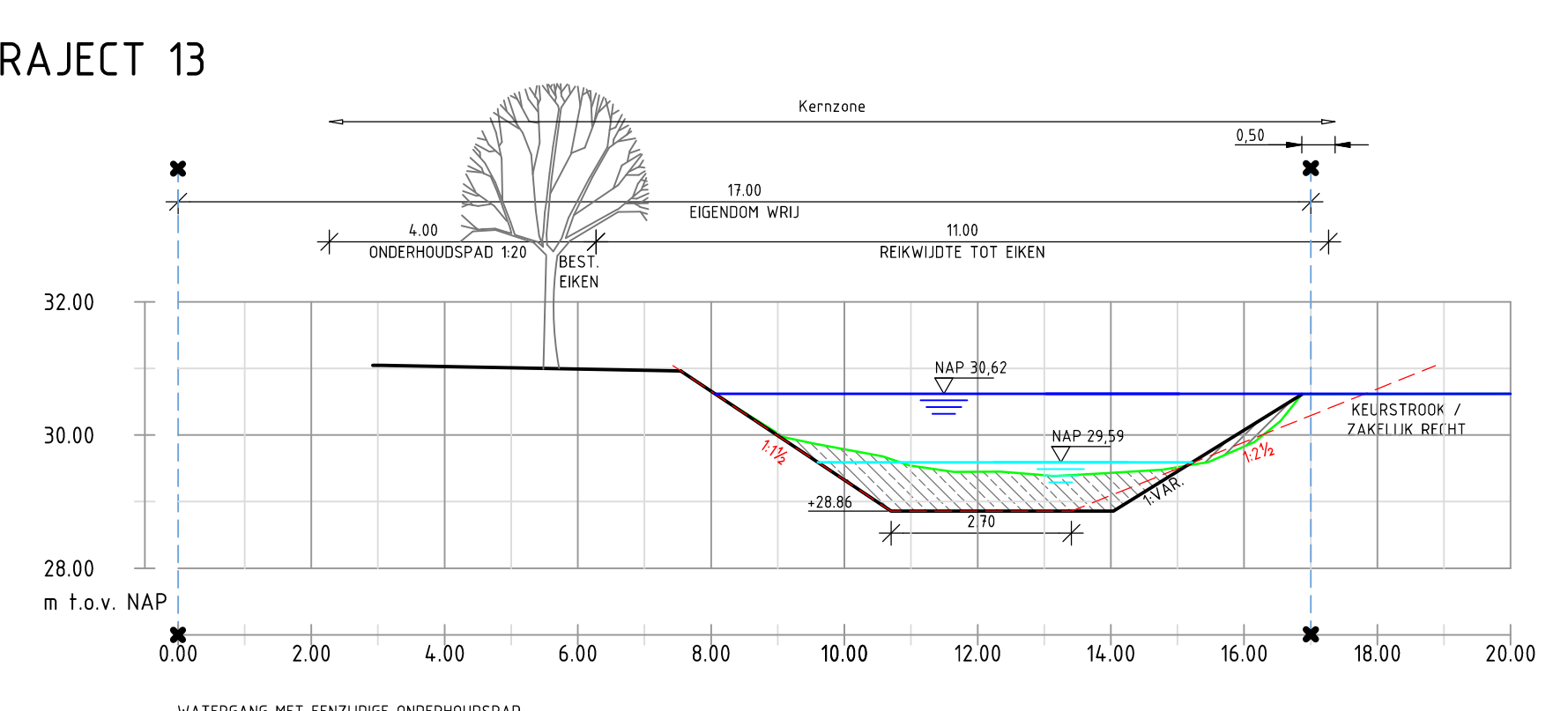
TRAJECT 2-2a



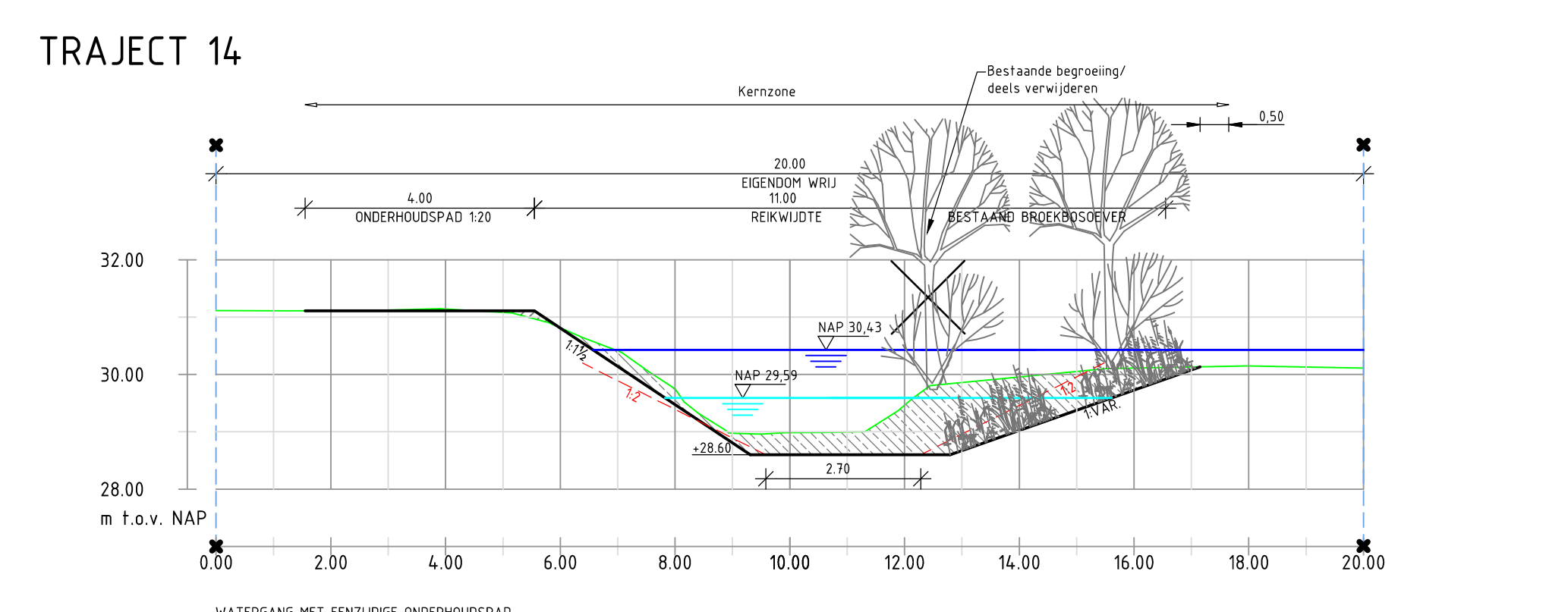
TRAJECT 12



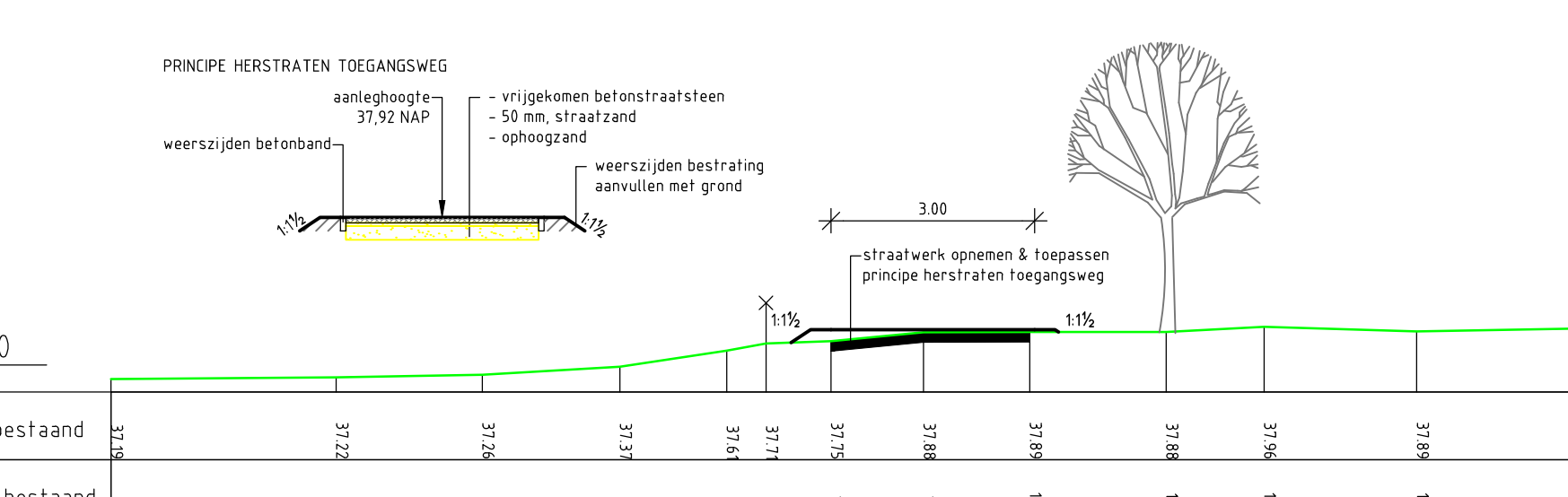
TRAJECT 13



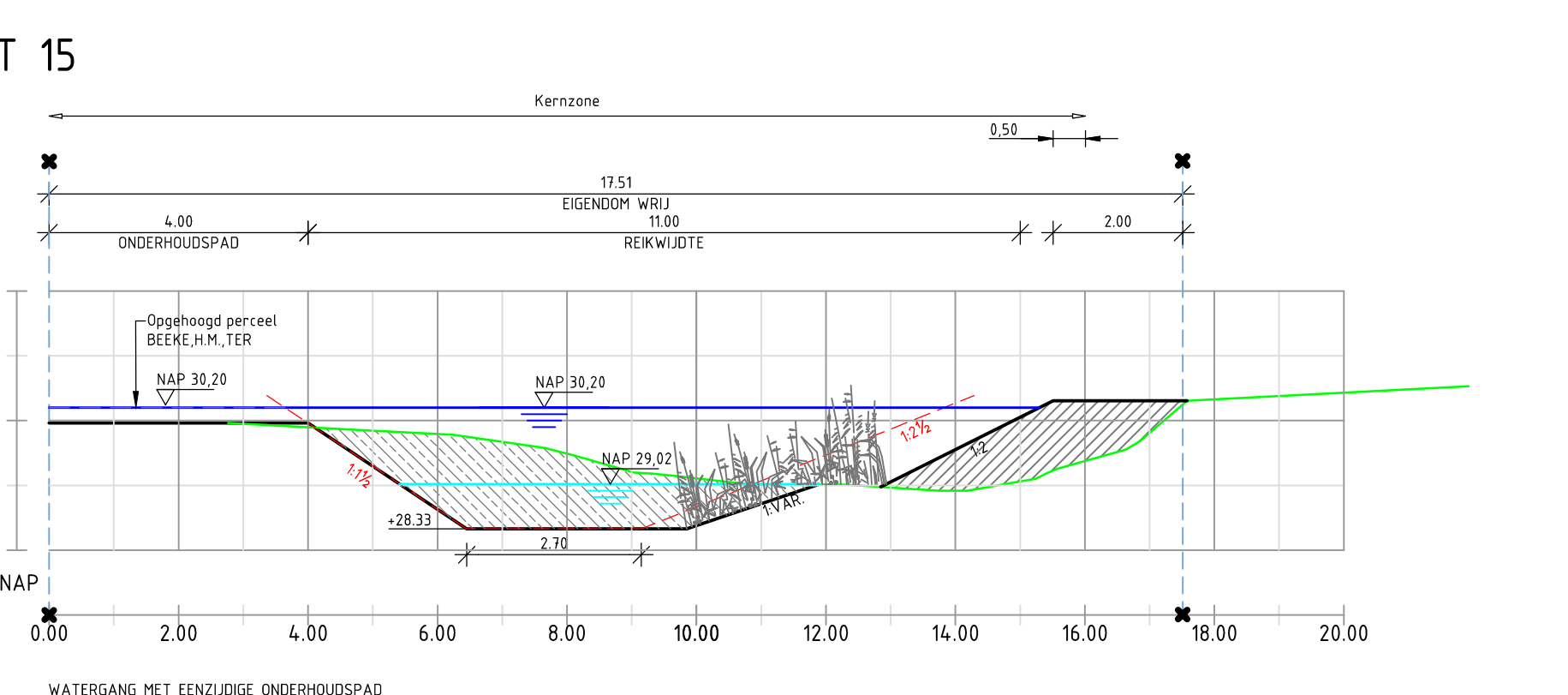
TRAJECT 14



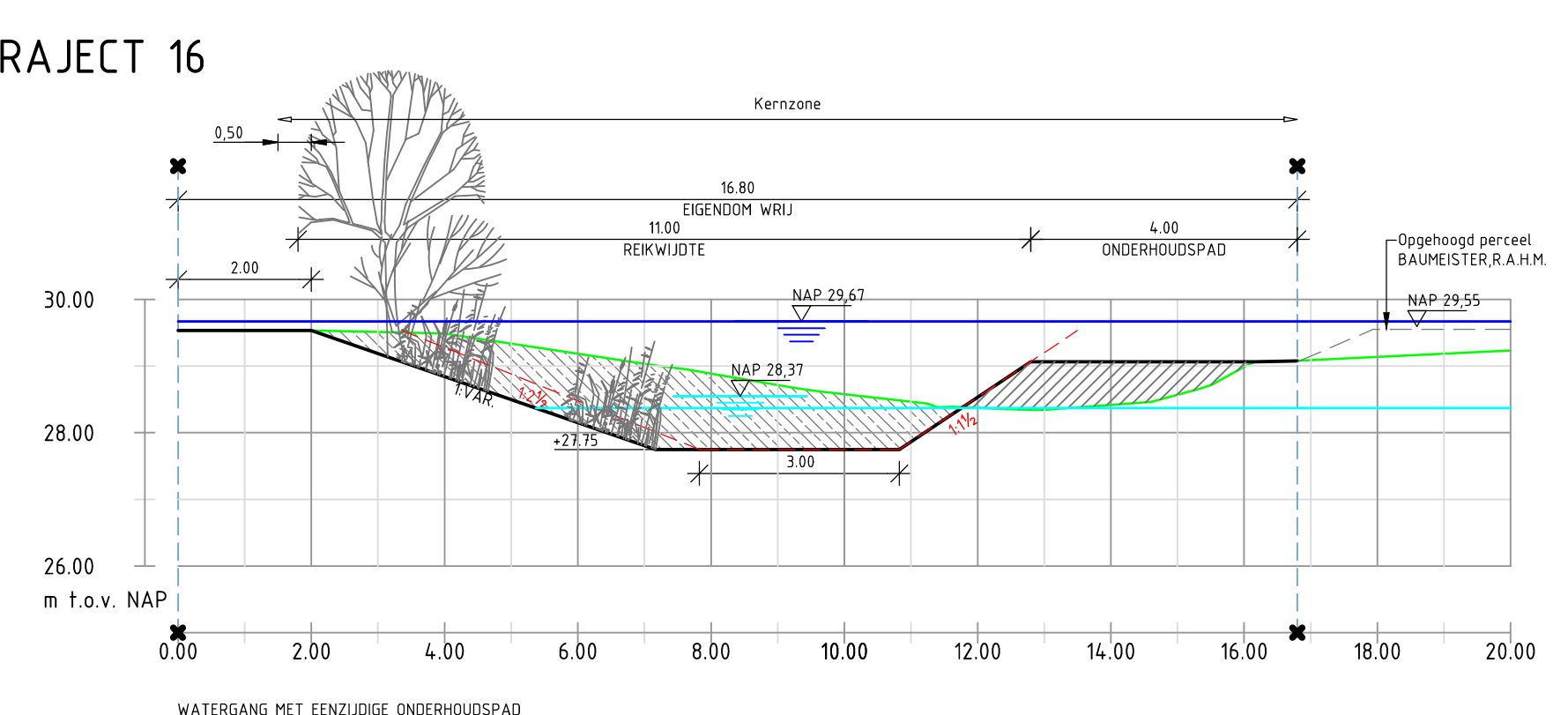
TRAJECT 2-2a



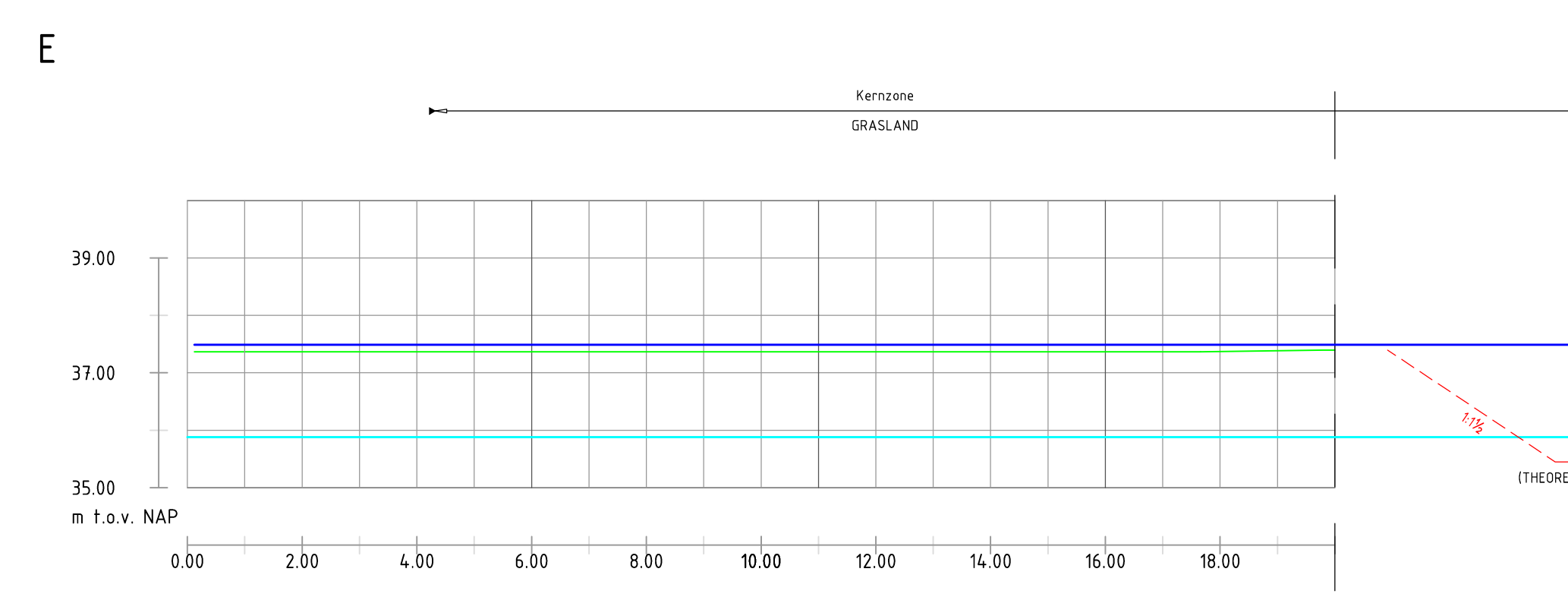
TRAJECT 15



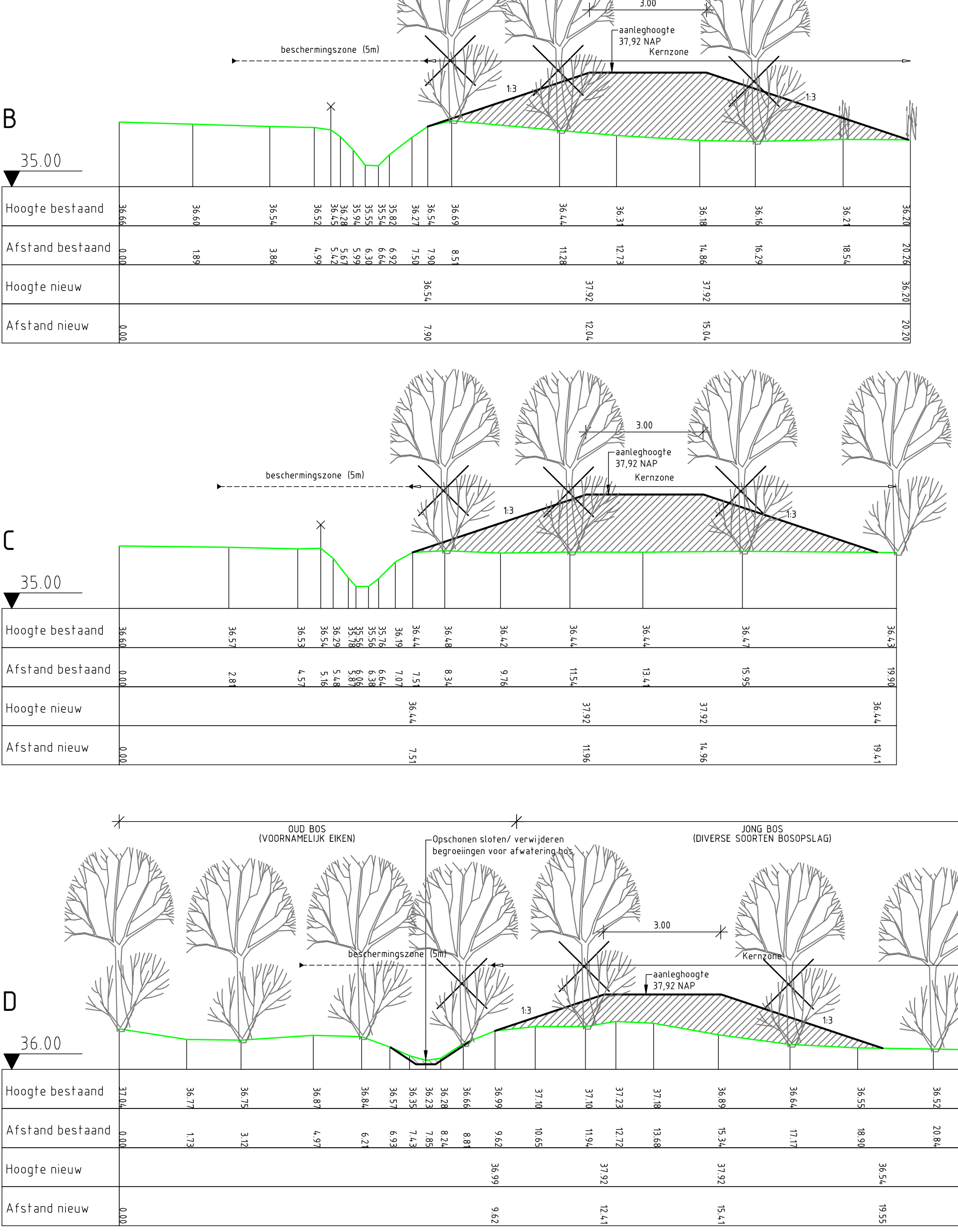
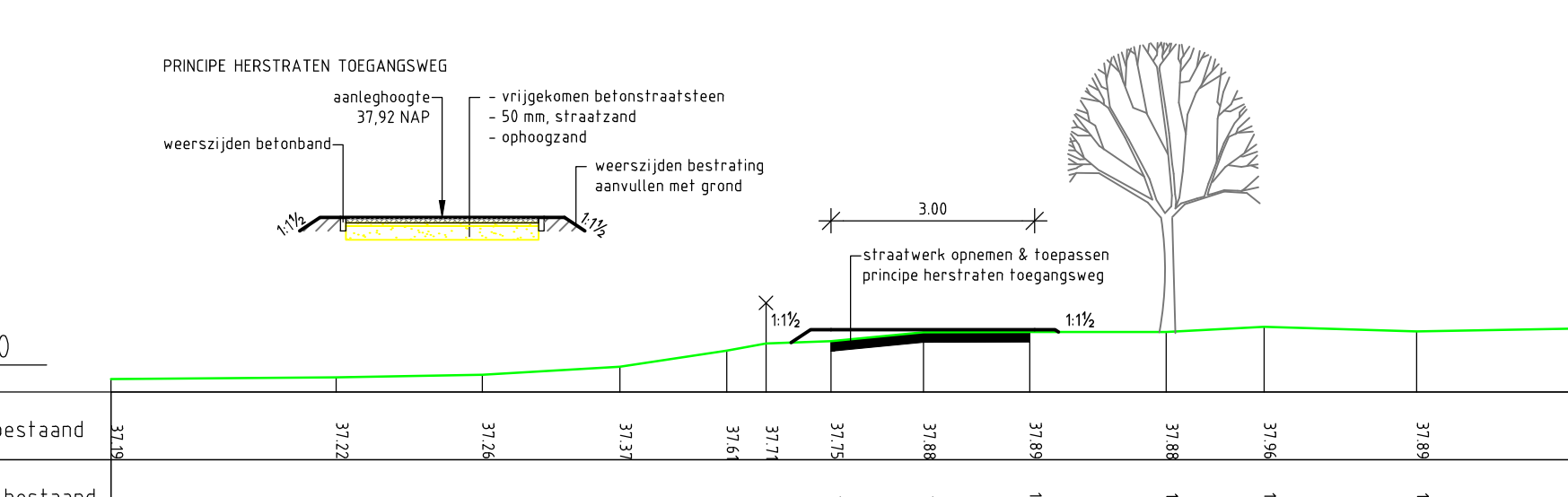
TRAJECT 16



TRAJECT 17



TRAJECT 2-2a



LEGENDA

- Opname/ maaienveld/ bodemlijn
- Theoretisch profiel
- Ontwerp
- Bestaande weg
- Eigendomsgrens
- Raster
- Ontgraven
- Aanvullen
- Basis afvoer
- T=10
- Beschermingszone
- Waterslaatswerk / kerkzone
- Bonen/ struiken
- Verwijderen Bonen/ struiken

Maten in meters, tenzij anders vermeld
 Diameters in millimeters, tenzij anders vermeld
 Hoogten in meters t.o.v. N.A.M. (tenzij anders vermeld)
 Ligging bestaande kabels en leidingen ter indicatie ingetekend

Wijz.	Datum	Get.	Omschrijving
Project: Optimalisatie Buursterbeek en Zoddebeek Opdrachtgever: Waterschap Rijn & IJssel Omschrijving: Profielen Zoddebeek			
Beeldnummer: 1603117A00-B1 Doc. (opgesteld): Doc. (controleur):		Formaat: AD+ Schaal: 1:100 Status: Definitief Datum: 04-12-2017 Bladz. 3 van 5 Nummer: 1603117A00-203 Wijz.: J	
Projectnummer: 1603117A00 Projectleider: Auteur: Fase: Bestek Logo opdrachtgever: Waterschap Rijn en IJssel Logo uitvoerder:			
RPS Natuur, recreatie en waterbeheer P.O. Box 11414, 4400 AC, Lelystad T +31 (0) 520 89 99 W www.rps.nl			