

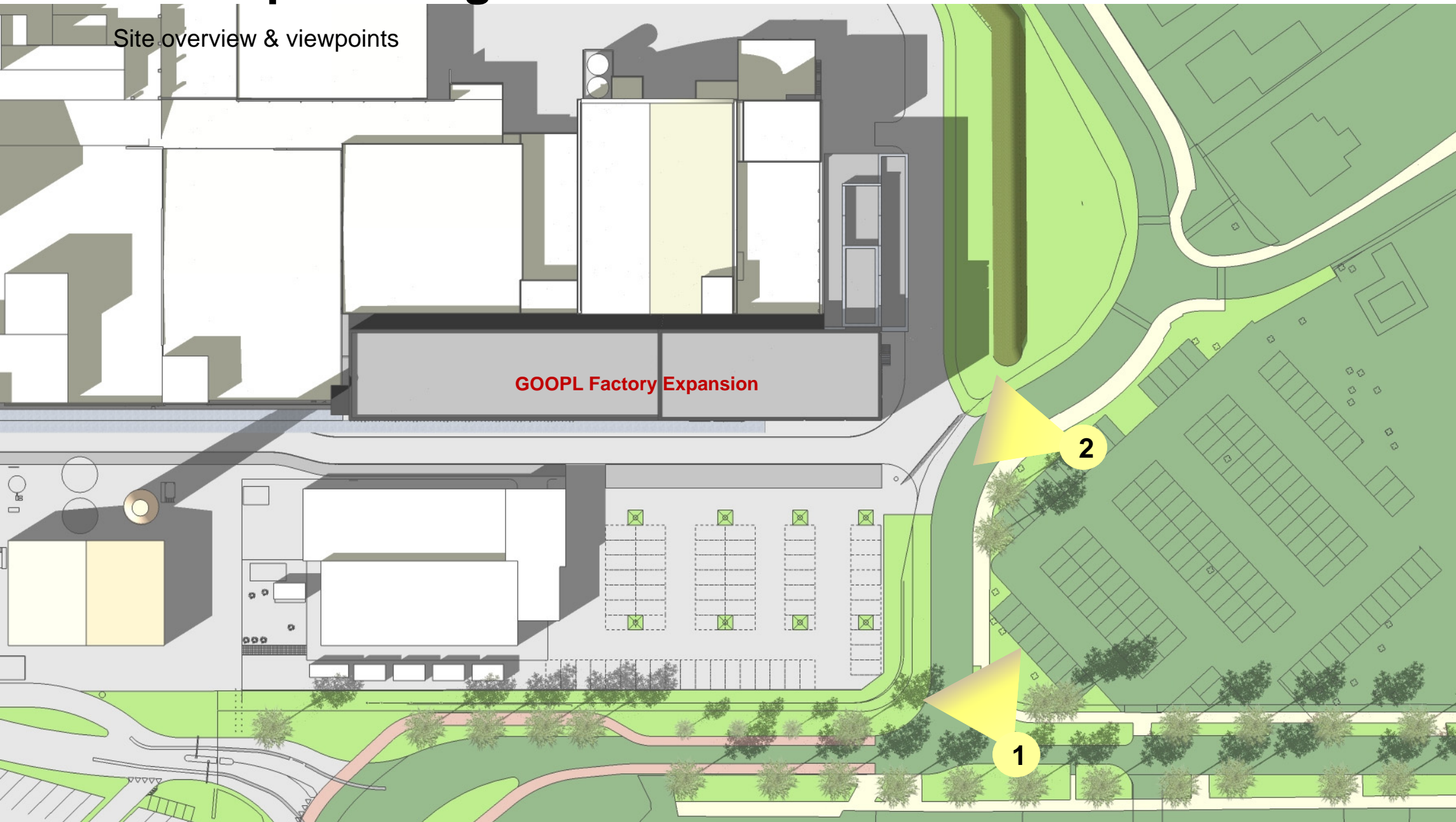


Commissie Vergadering of 27. November & Advisory Note of 23 December 2014

March 20 2015 Revised Proposal | Nestlé GOOPL Factory Expansion, Nunspeet

developed design

Site overview & viewpoints



developed design

Viewpoint 1 current



developed design

Viewpoint 1



developed design

Viewpoint 1 new building



developed design

Viewpoint 1 new building & landscaping



developed design

Viewpoint 2 current



developed design

Viewpoint 2



developed design

Viewpoint 2 new building



developed design

Viewpoint 2 new building & landscaping

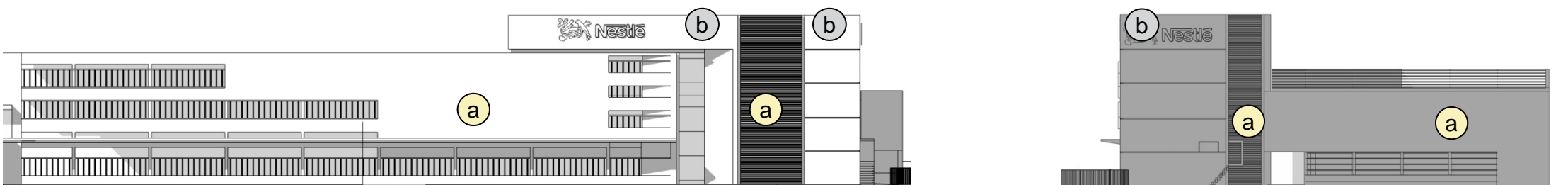


materials + colors



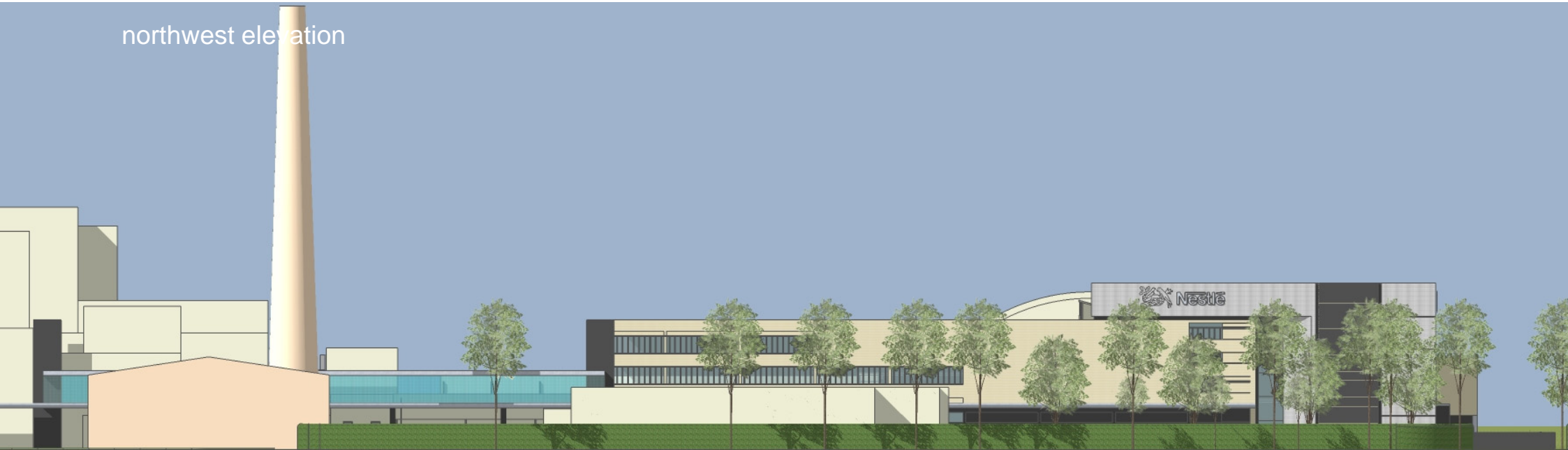
(a) RAINSCREEN FAÇADE (CERAMIC TILE - TERRACOTTA)

(b) RAINSCREEN FAÇADE (METAL CLADDING)



developed design

northwest elevation



southwest elevation



developed design

northwest elevation



northwest elevation & landscaping > current tree inventory & proposed hedge + lime tree arrangement



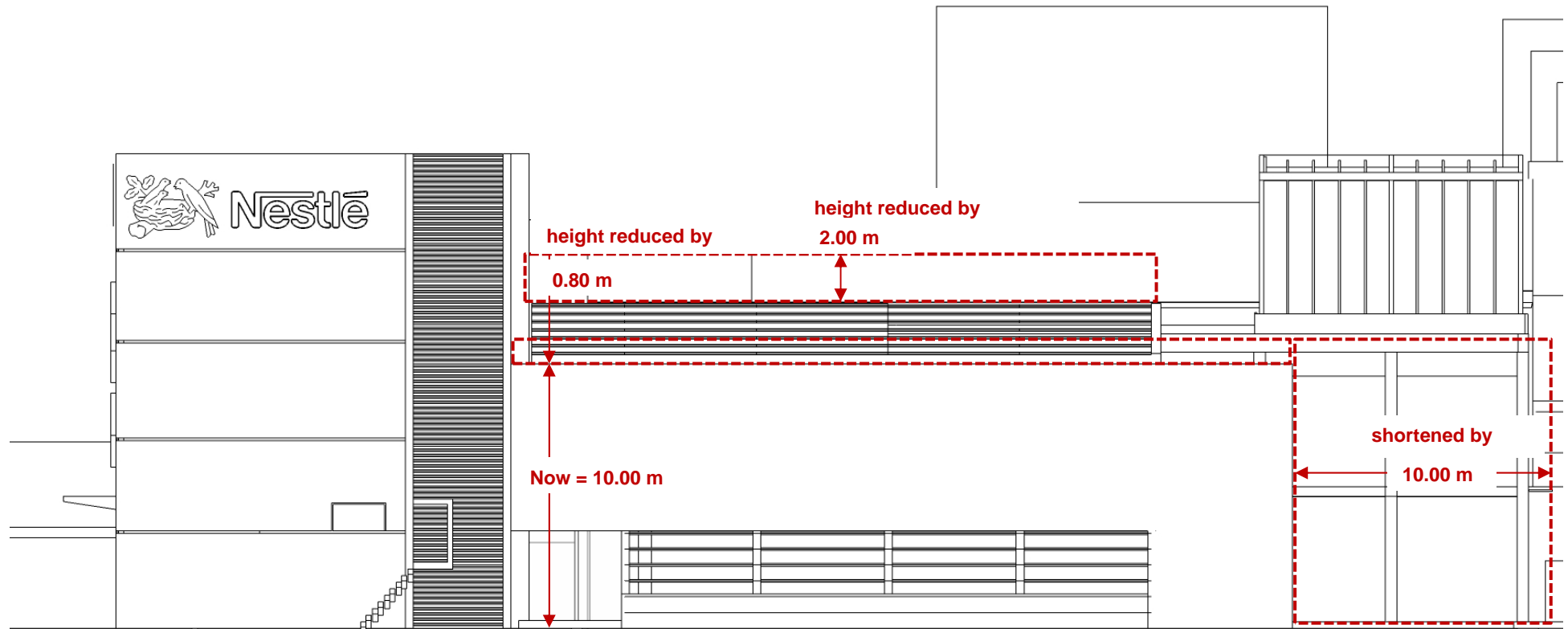
developed design

southwest aerial view



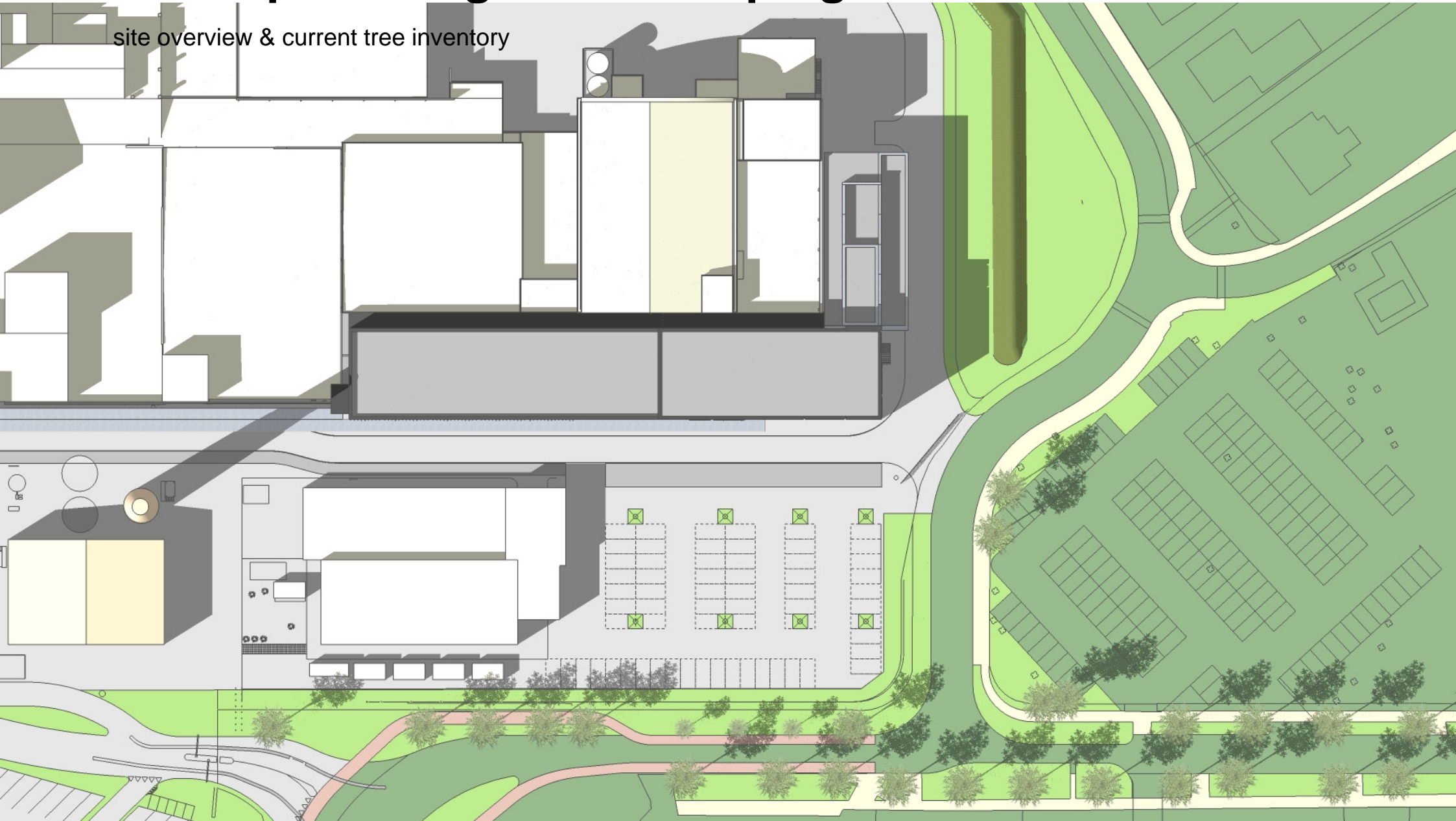
developed design

building mass reduced – new dimensions



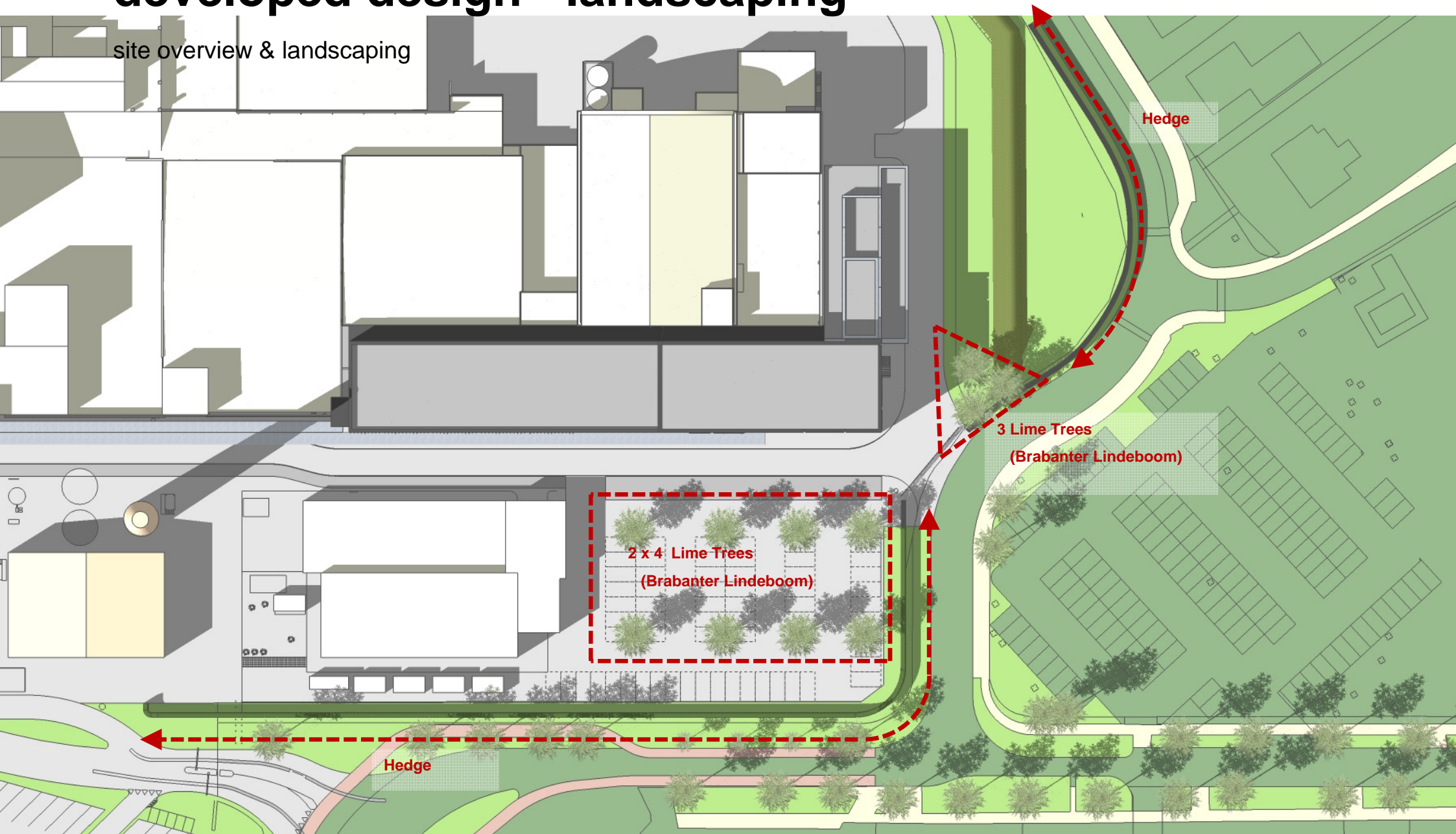
developed design - landscaping

site overview & current tree inventory



developed design - landscaping

site overview & landscaping



developed design - site

aerial view west



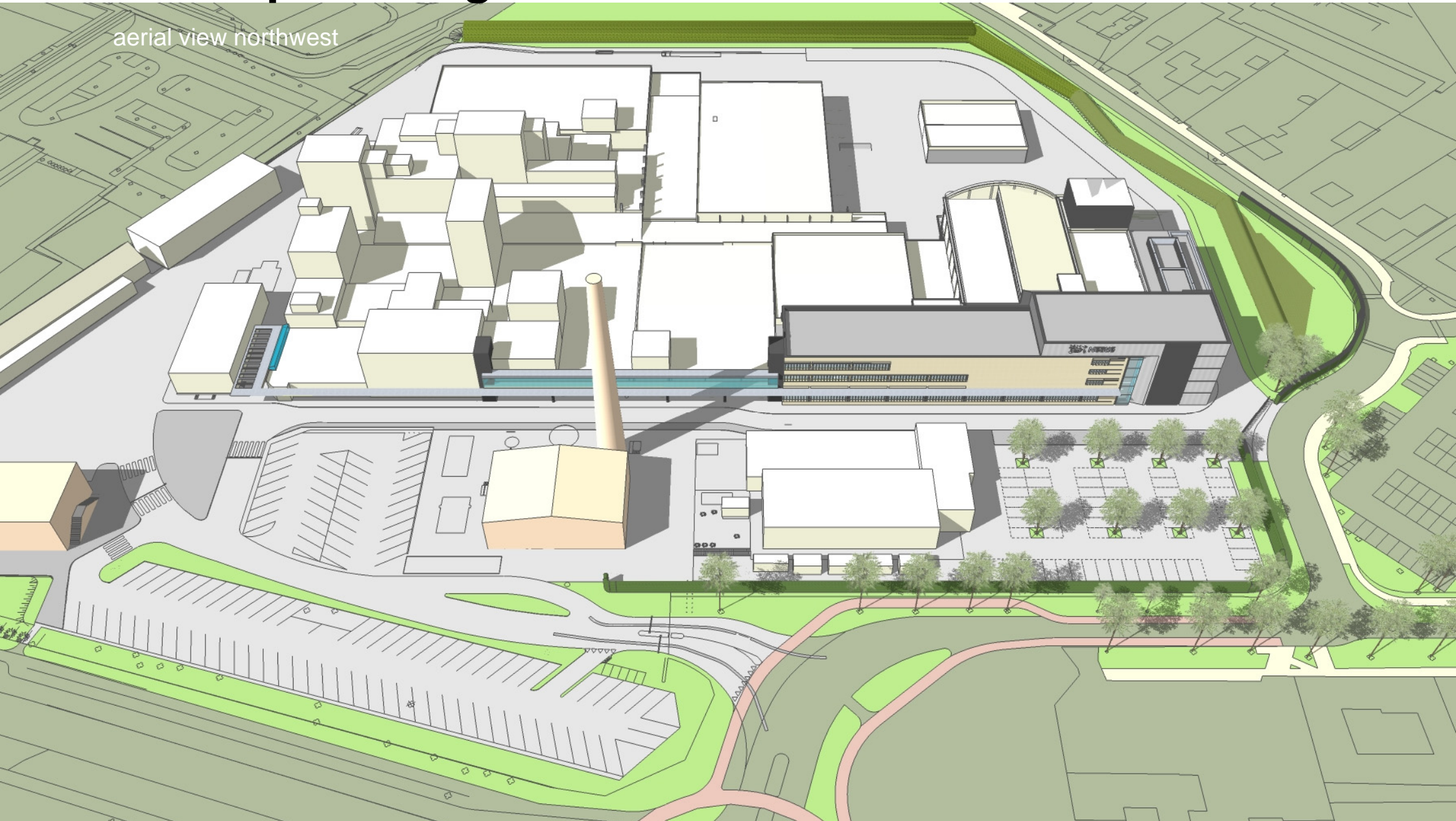
developed design - site

aerial view west



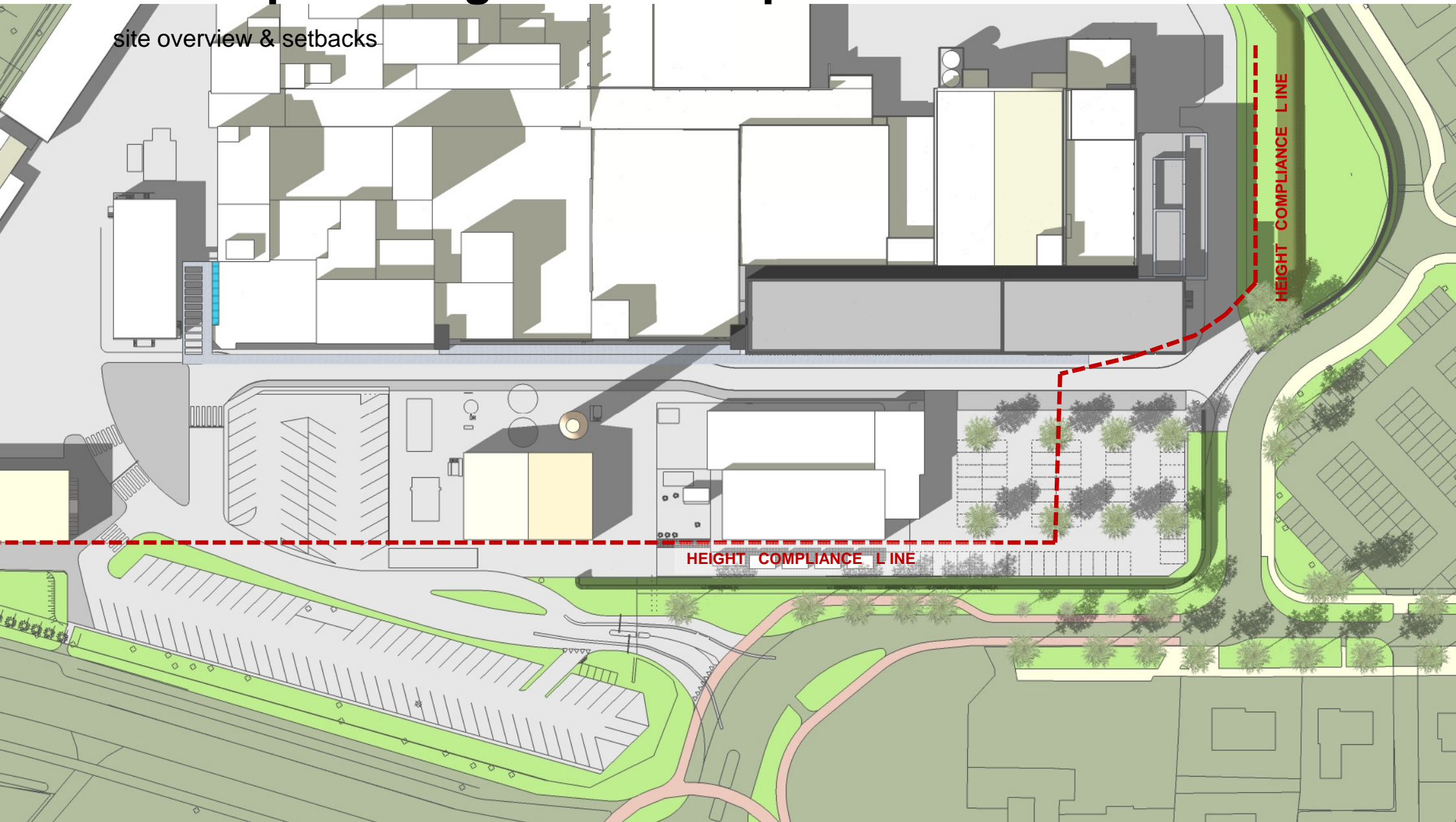
developed design - site

aerial view northwest



developed design code compliance

site overview & setbacks



developed design

site map



your partner for excellence in industrial design + construction

Zurich

IE Industrial Engineering Zürich AG
Wiesenstrasse 7 | 8008 Zürich | Switzerland
T +41 44 389 86 00 | F +41 44 389 86 01 | zuerich@ie-group.com

Genève

IE Industrial Engineering Genève SA
Rue de la Coulouvrenière 29 | 1204 Genève | Switzerland
T +41 22 322 19 99 | F +41 22 322 19 98 | geneve@ie-group.com

Munich

IE Industrial Engineering München GmbH
Paul-Gerhardt-Allee 48 | 81245 München | Germany
T +49 89 82 99 39 0 | F +49 89 82 99 39 33 | muenchen@ie-group.com

Frankfurt

Ein Bereich der IE Industrial Engineering München GmbH
Trakehner Straße 7-9 | 60487 Frankfurt/Main | Germany
T +49 69 959 133 0 | F +49 69 959 133 33 | frankfurt@ie-group.com

www.ie-group.com