

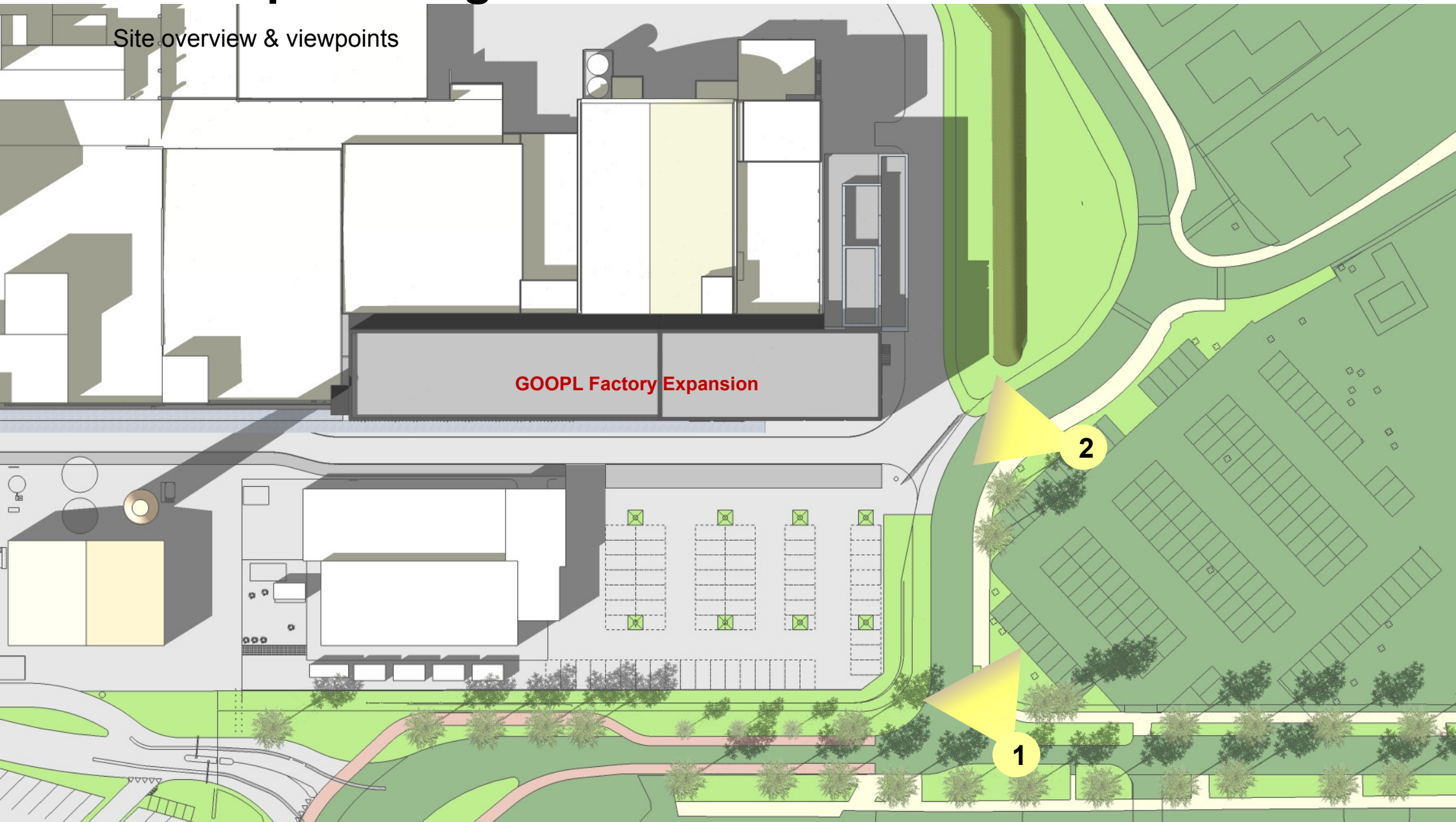


**Commissie Vergadering of 27. November & Advisory Note of 23 December 2014**

**March 11 2015 Revised Proposal** | Nestlé GOOPL Factory Expansion, Nunspeet

# developed design

Site overview & viewpoints





# developed design

Viewpoint 1 current





# developed design

Viewpoint 1

optional slide





# developed design

Viewpoint 1 new building





# developed design

Viewpoint 1 new building & landscaping





# developed design

Viewpoint 2 current





# developed design

Viewpoint 2

optional slide





# developed design

Viewpoint 2 new building





# developed design

Viewpoint 2 new building & landscaping



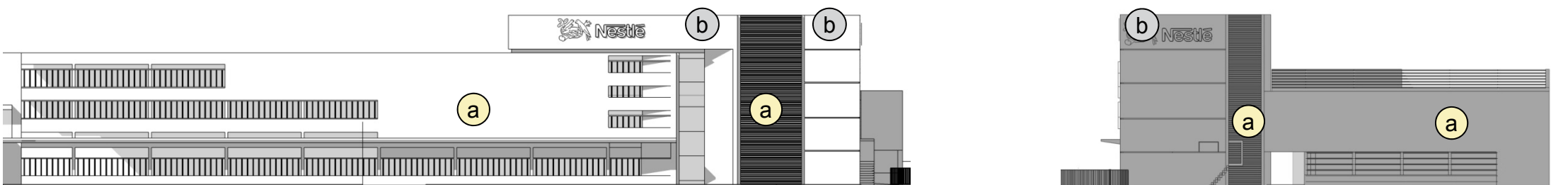


# materials + colors



(a) RAINSCREEN FAÇADE (CERAMIC TILE - TERRACOTTA)

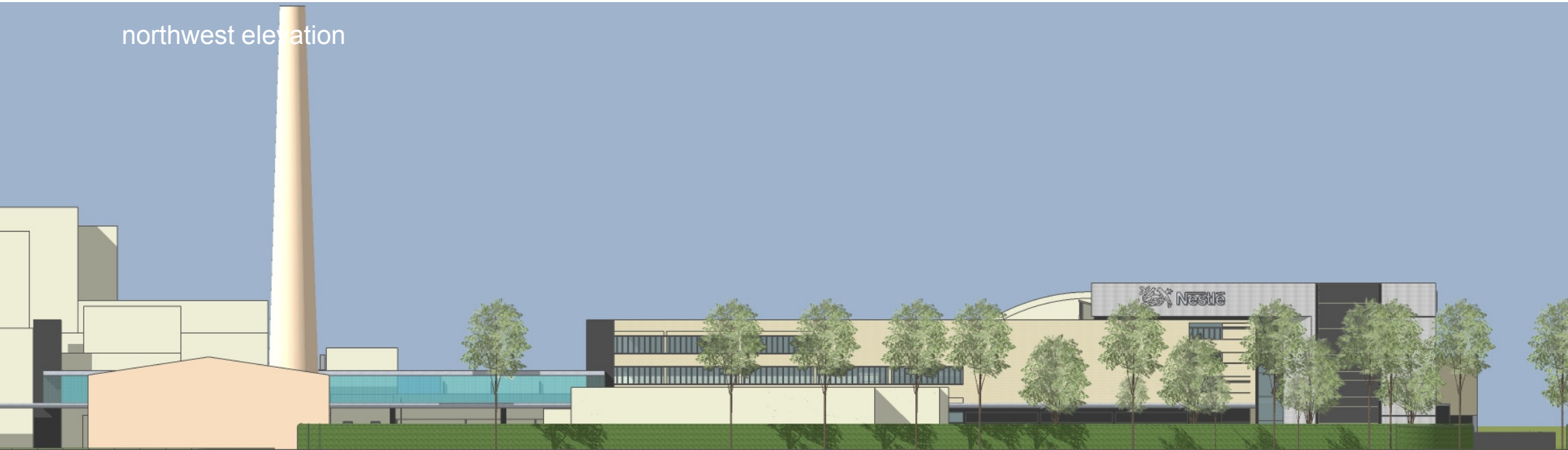
(b) RAINSCREEN FAÇADE (METAL CLADDING)





# developed design

northwest elevation



southwest elevation





# developed design

northwest elevation



northwest elevation & landscaping > current tree inventory & proposed hedge + lime tree arrangement





# developed design

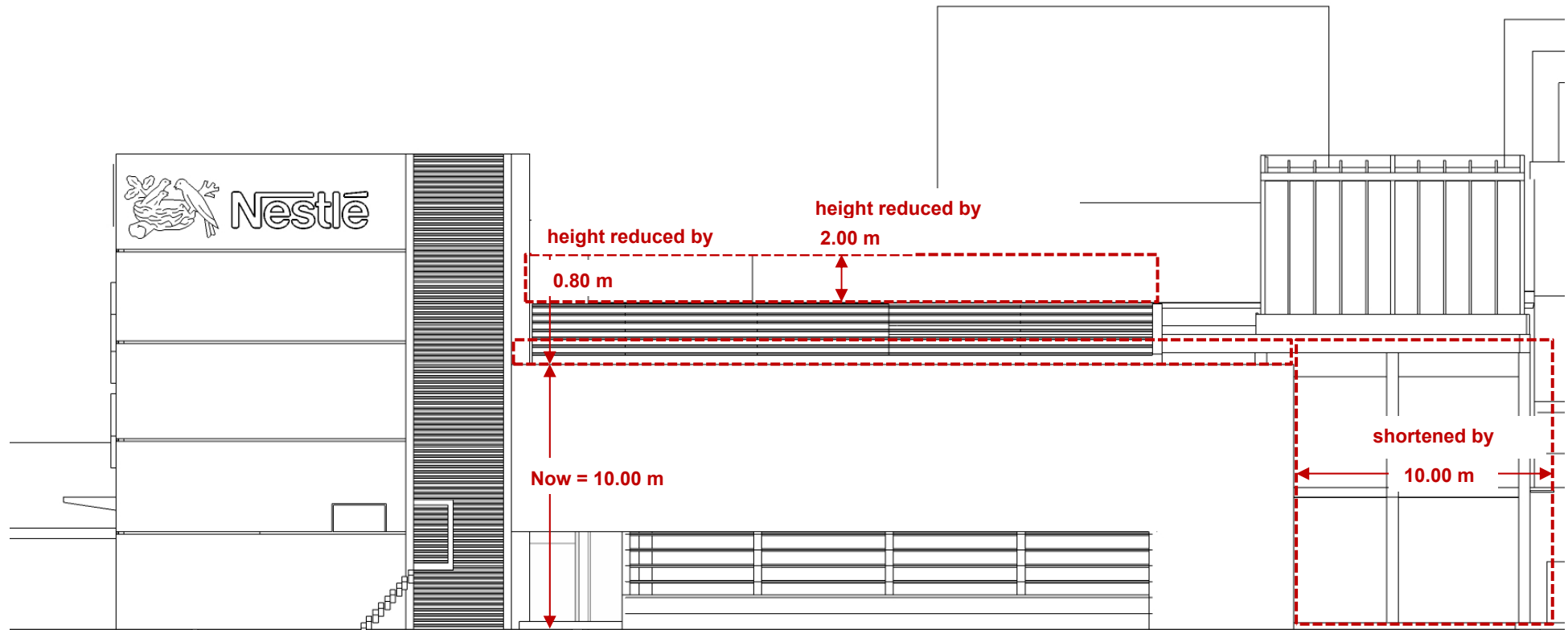
southwest aerial view





# developed design

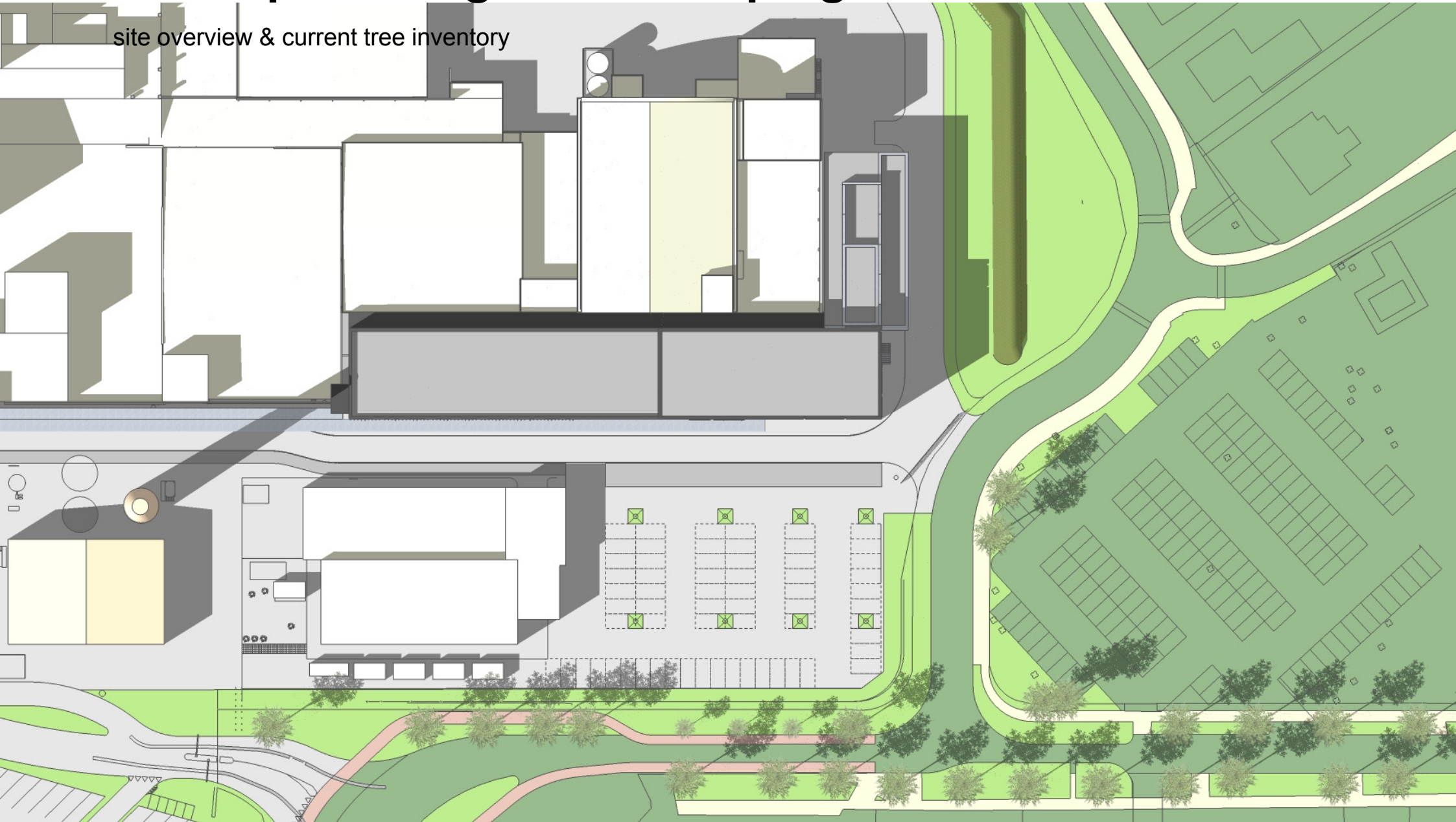
building mass reduced – new dimensions





# developed design - landscaping

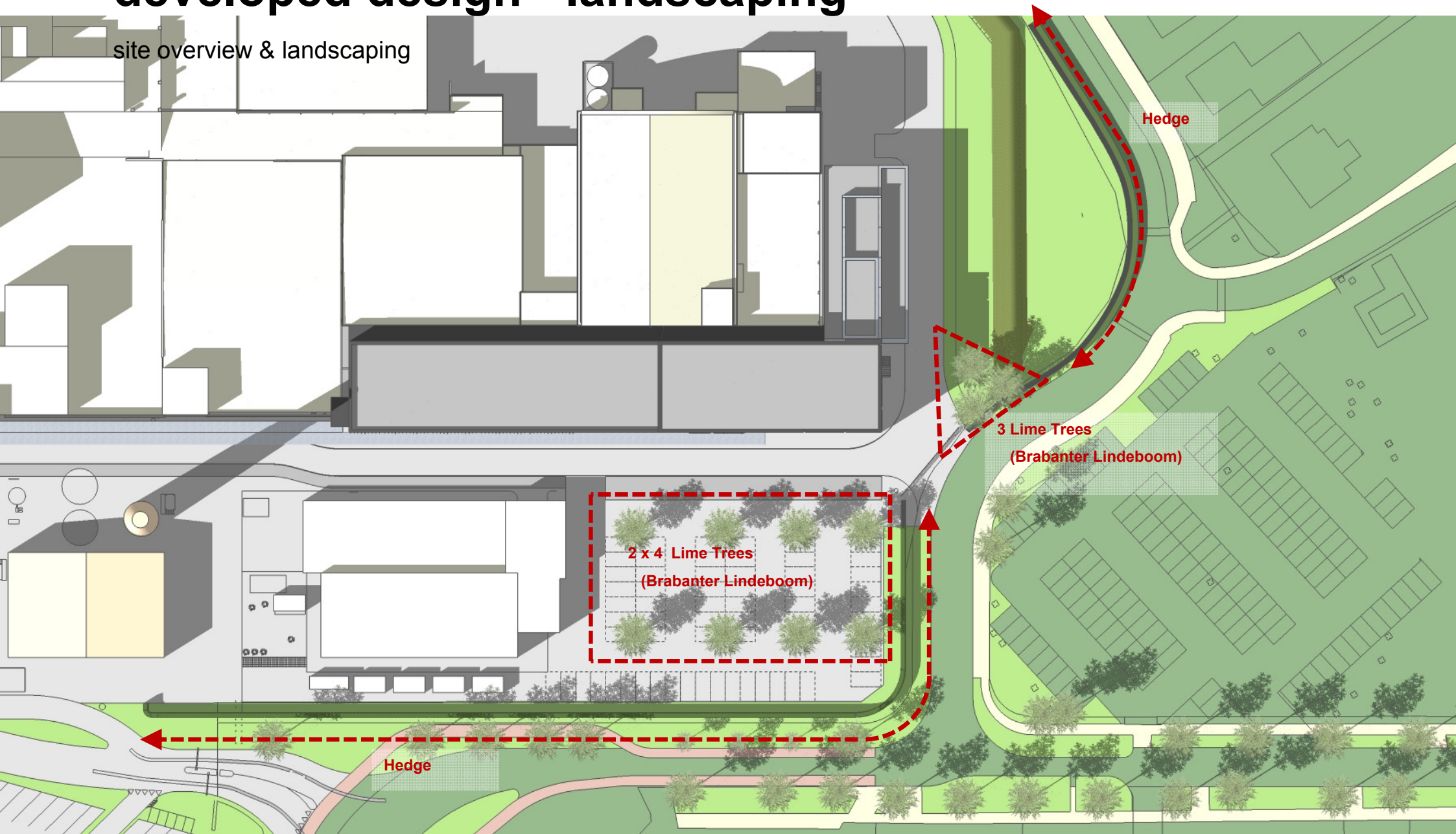
site overview & current tree inventory





# developed design - landscaping

site overview & landscaping





# developed design - site

aerial view west





# developed design - site

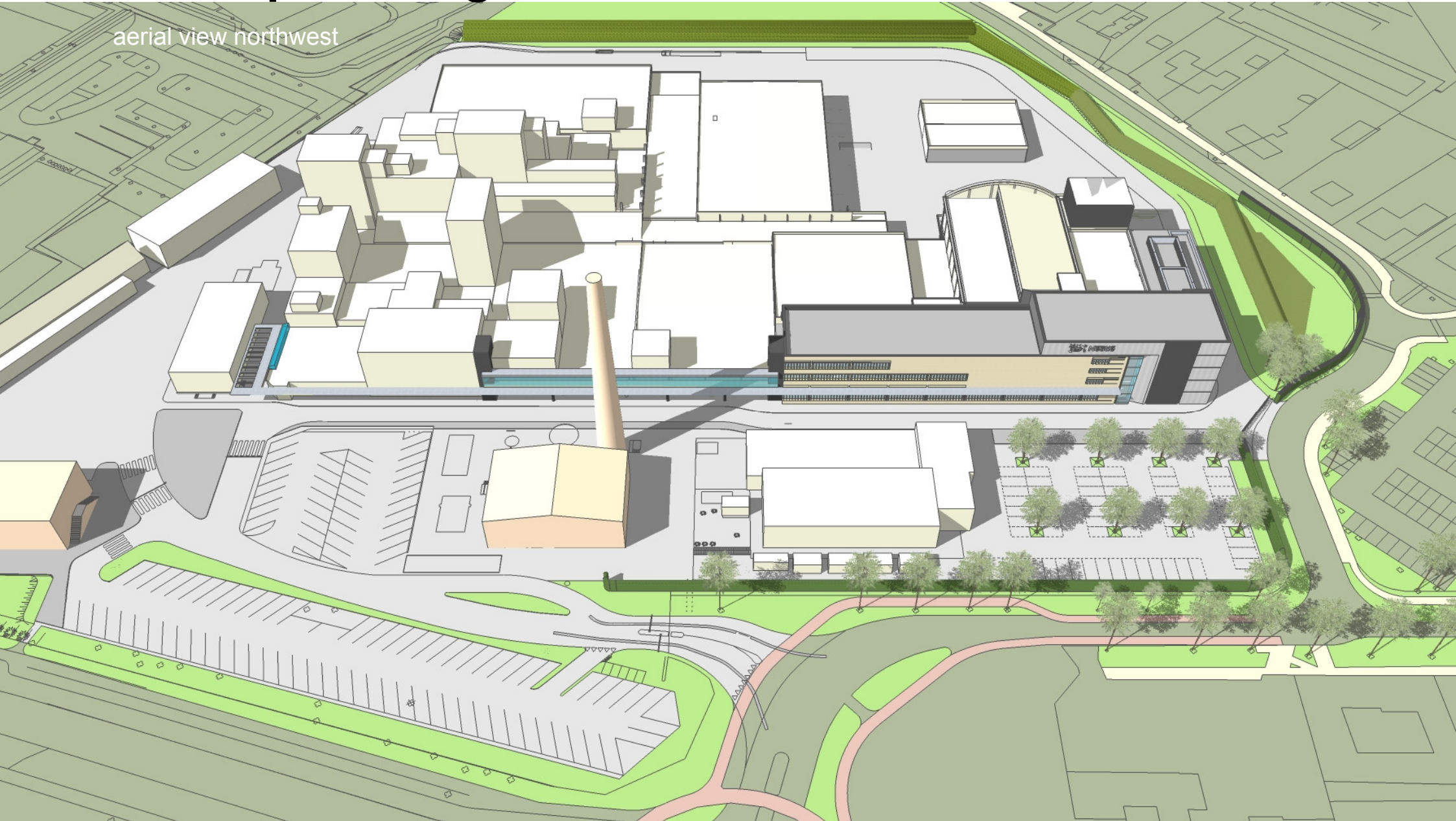
aerial view west





# developed design - site

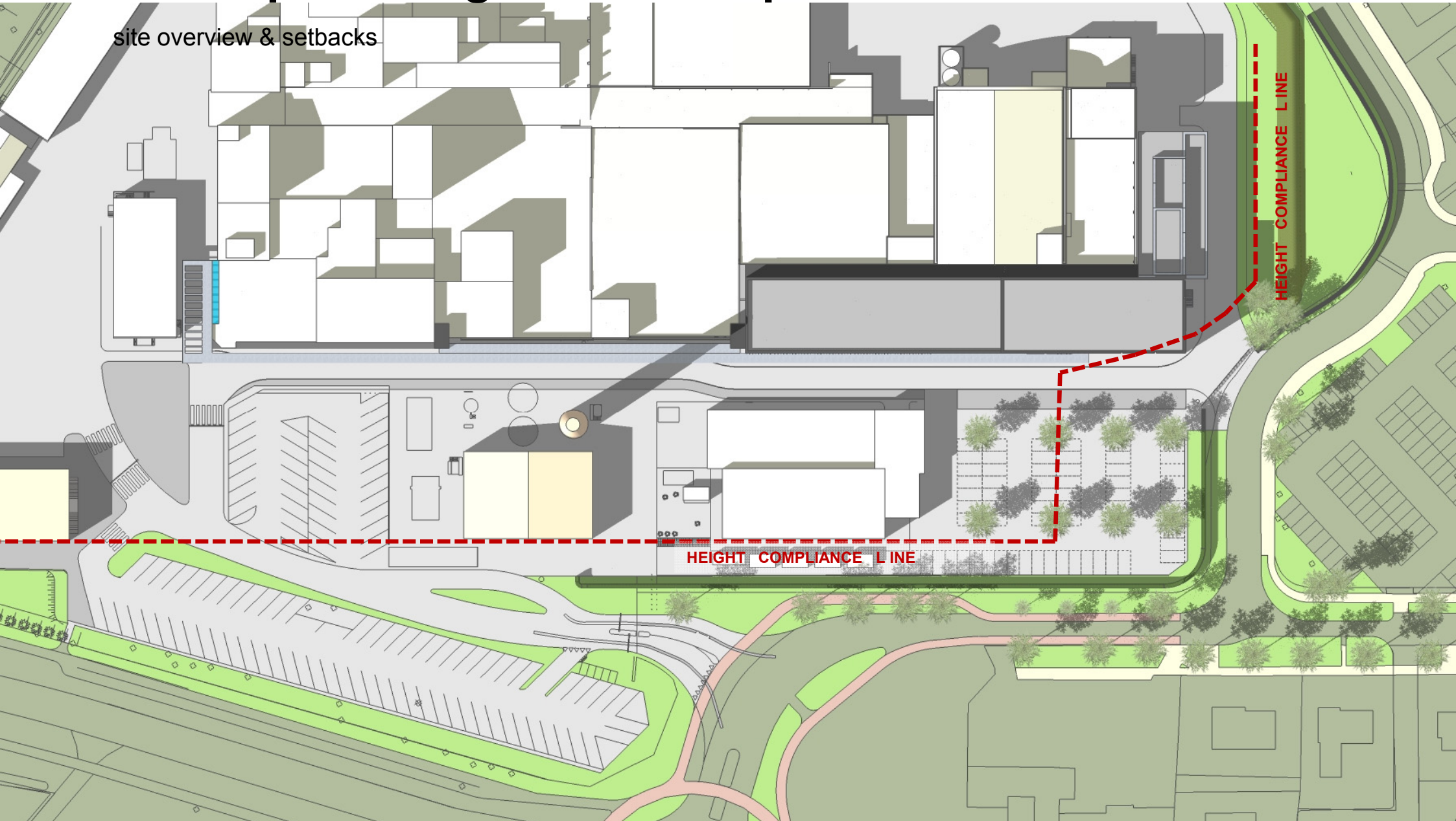
aerial view northwest





# developed design code compliance

site overview & setbacks





# developed design

site map





# your partner for excellence in industrial design + construction

## **Zurich**

IE Industrial Engineering Zürich AG  
Wiesenstrasse 7 | 8008 Zürich | Switzerland  
T +41 44 389 86 00 | F +41 44 389 86 01 | [zuerich@ie-group.com](mailto:zuerich@ie-group.com)

## **Genève**

IE Industrial Engineering Genève SA  
Rue de la Coulouvrenière 29 | 1204 Genève | Switzerland  
T +41 22 322 19 99 | F +41 22 322 19 98 | [geneve@ie-group.com](mailto:geneve@ie-group.com)

## **Munich**

IE Industrial Engineering München GmbH  
Paul-Gerhardt-Allee 48 | 81245 München | Germany  
T +49 89 82 99 39 0 | F +49 89 82 99 39 33 | [muenchen@ie-group.com](mailto:muenchen@ie-group.com)

## **Frankfurt**

Ein Bereich der IE Industrial Engineering München GmbH  
Trakehner Straße 7-9 | 60487 Frankfurt/Main | Germany  
T +49 69 959 133 0 | F +49 69 959 133 33 | [frankfurt@ie-group.com](mailto:frankfurt@ie-group.com)

[www.ie-group.com](http://www.ie-group.com)