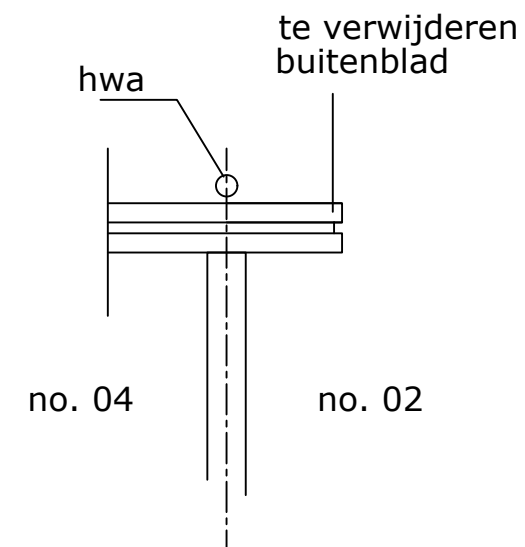
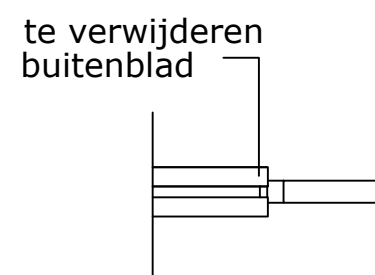
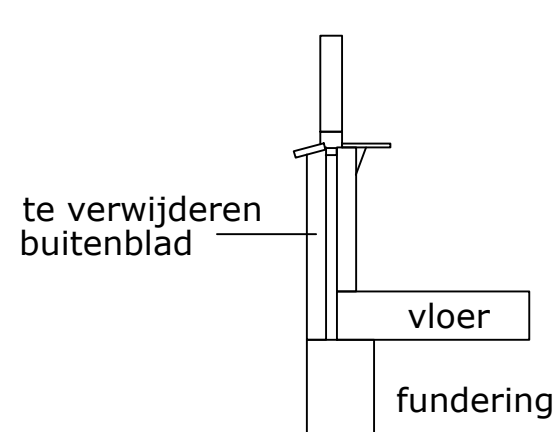
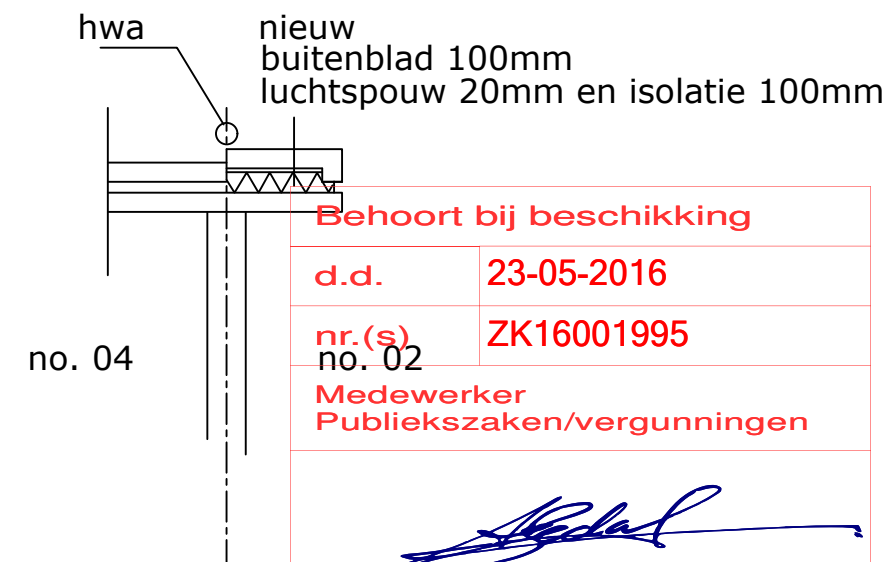
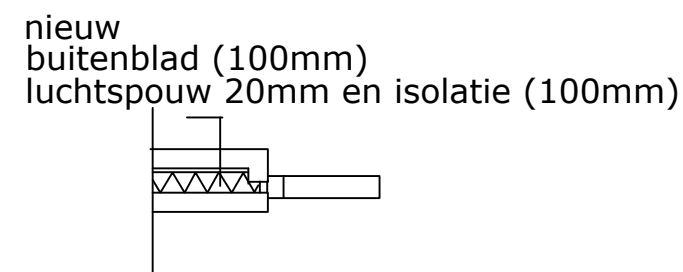
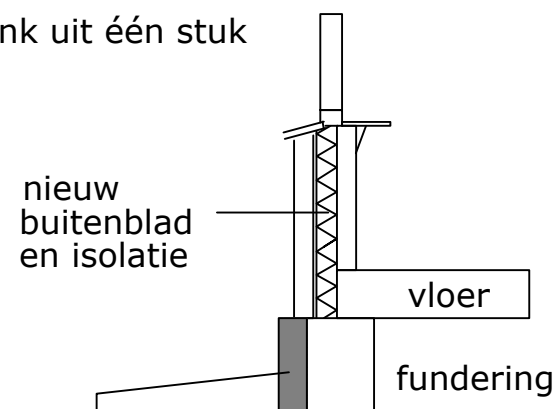


BESTAAND



GEWENST

crème-witte vensterbank uit één stuk



betonaanstorting 200x500mm (praktische maat) met verankering volgens constructeur

| | |
|---|------------|
| Behoort bij beschikking | |
| d.d. | 23-05-2016 |
| nr.(s) no. 02 | ZK16001995 |
| Medewerker Publiekszaken/vergunningen | |
|  | |

verticaal funderingsdetail

horizontaal kozijndetail

horizontaal detail aansluiting burens

DEN HARTOG BOUWPARTNER – A4 – dHb16006

plan te Steenbergen – 2016-05-11 – PRINCIPEDetails