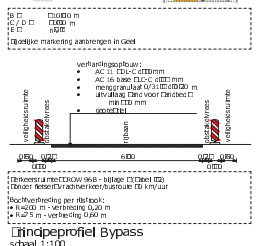
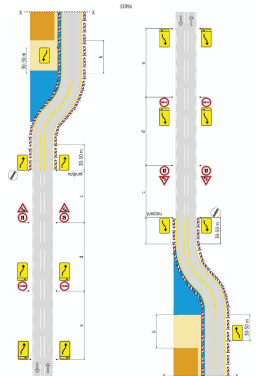
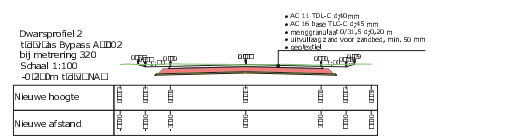
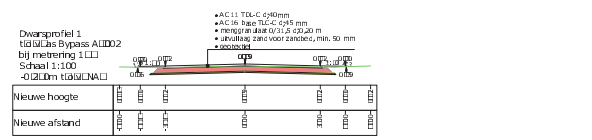
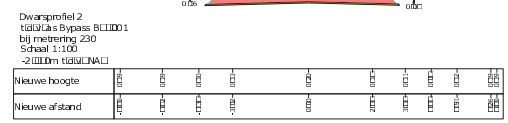
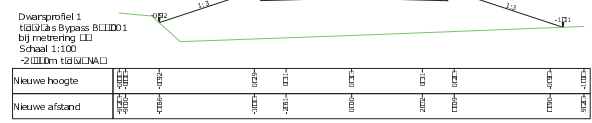


- LEGENDA**
- aanbrennen afwatering
 - aanbrennen schilddes
 - aanbrennen perkopengalen
tijdelijk monteren stabiliteit
noodl. inzet Lengte 2,00 m
1,00 à 1,50 m in de grond plaatsen







Situatie
schaal 1:1000

- AC11 TOL-C 600mm
- AC16 base TOL-C 045 mm
- mengprofiel 0/1,5 0,20 m
- afvalslag 200 voor zandbes, min. 50 mm
- wasserbak



01	Ontwerftijdelijke Bypass	2-10-2016	tek	mdm	mdm
01	Ontwerftijdelijke Bypass	01-10-2016	tek	mdm	mdm



provincie Fryslân
provincie Fryslân

De Centrale As
Contract Noord 1
Ontwerp tijdelijke Bypass

Bld	Aantal	Schaal	Revisie	Ontwoper	toelichting	Ontwerper	Projectbureau De Centrale As	Programma
1	1	divers	T. Afnis	A. Wier	M. Ogan	W.J. de Vries	SP. Huisman	Contract

Formaat: A1 Contractnummer: 14-40-WN Datum: 24-02-2016 Tekeningnummer: 3,5,356,1,1,1, DO