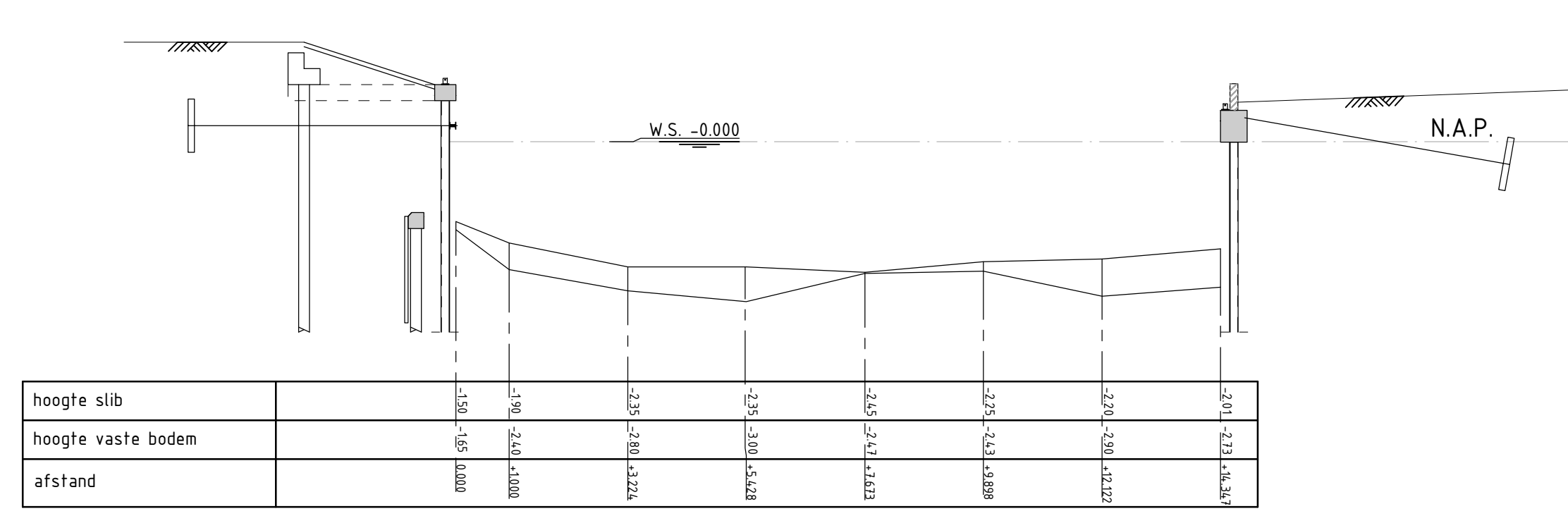
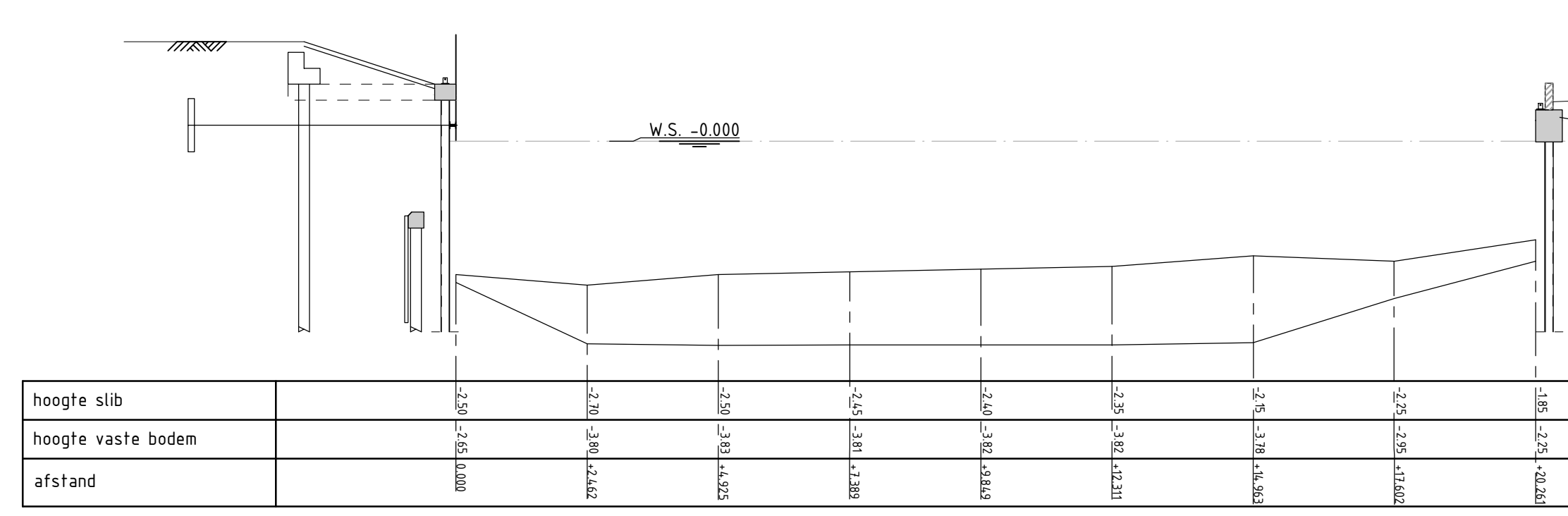




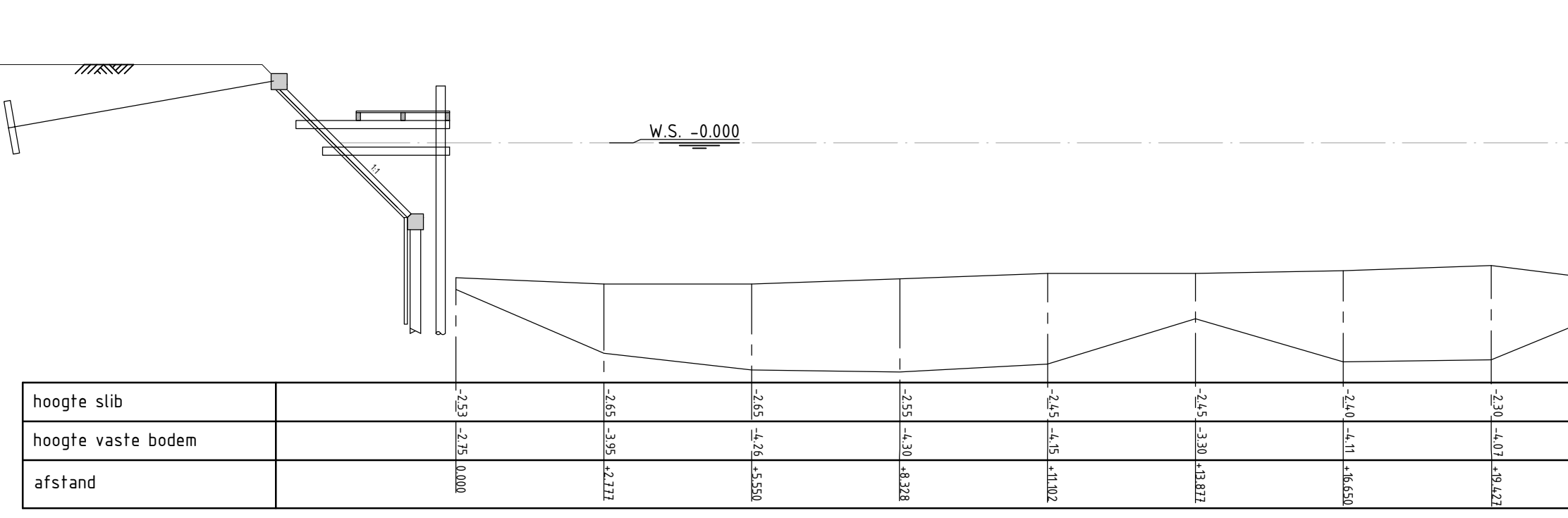
PROFIEL 1
SCHAAL 1:100



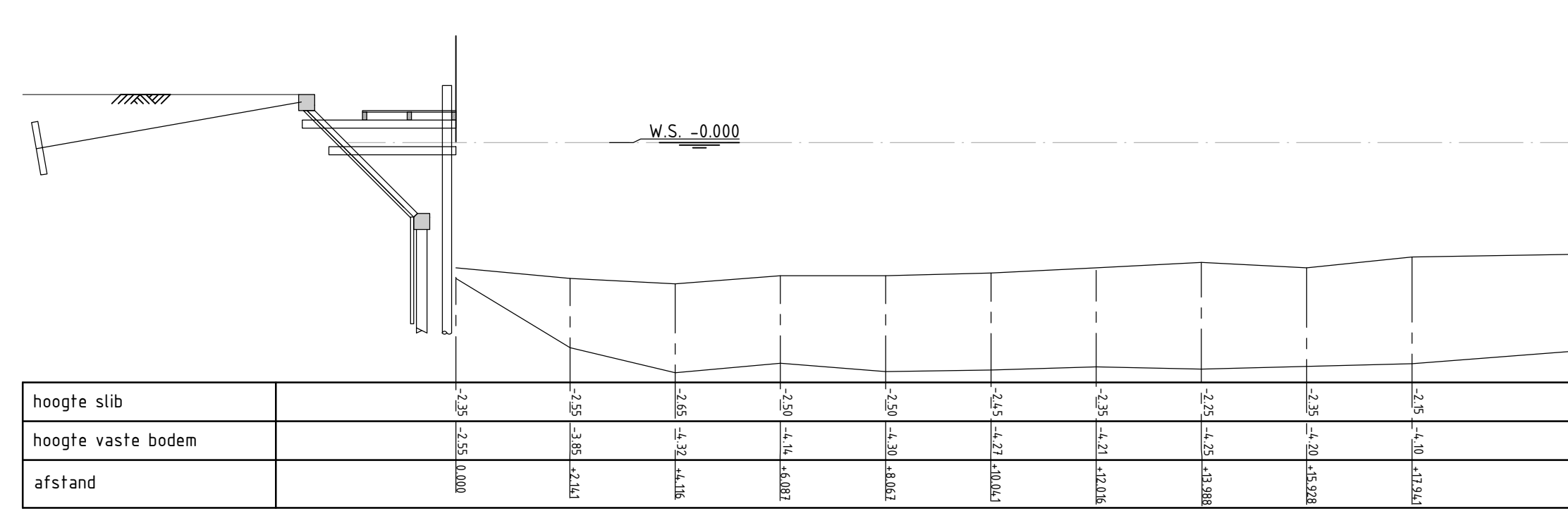
PROFIEL 2
SCHAAL 1:100



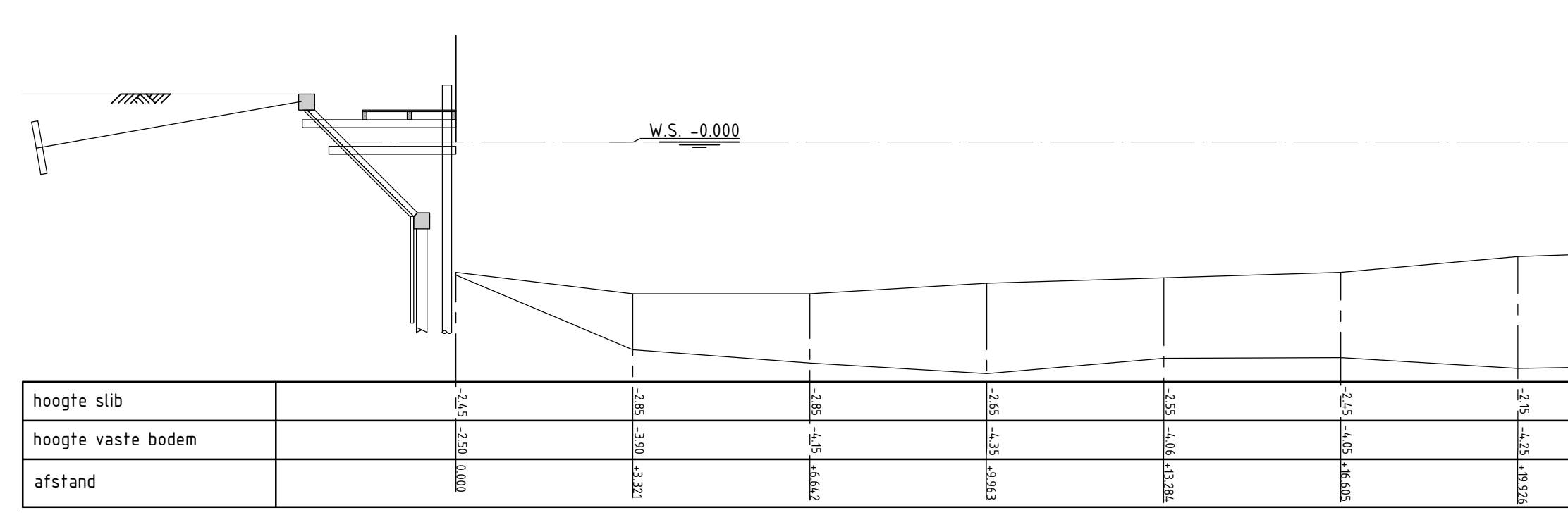
PROFIEL 3
SCHAAL 1:100



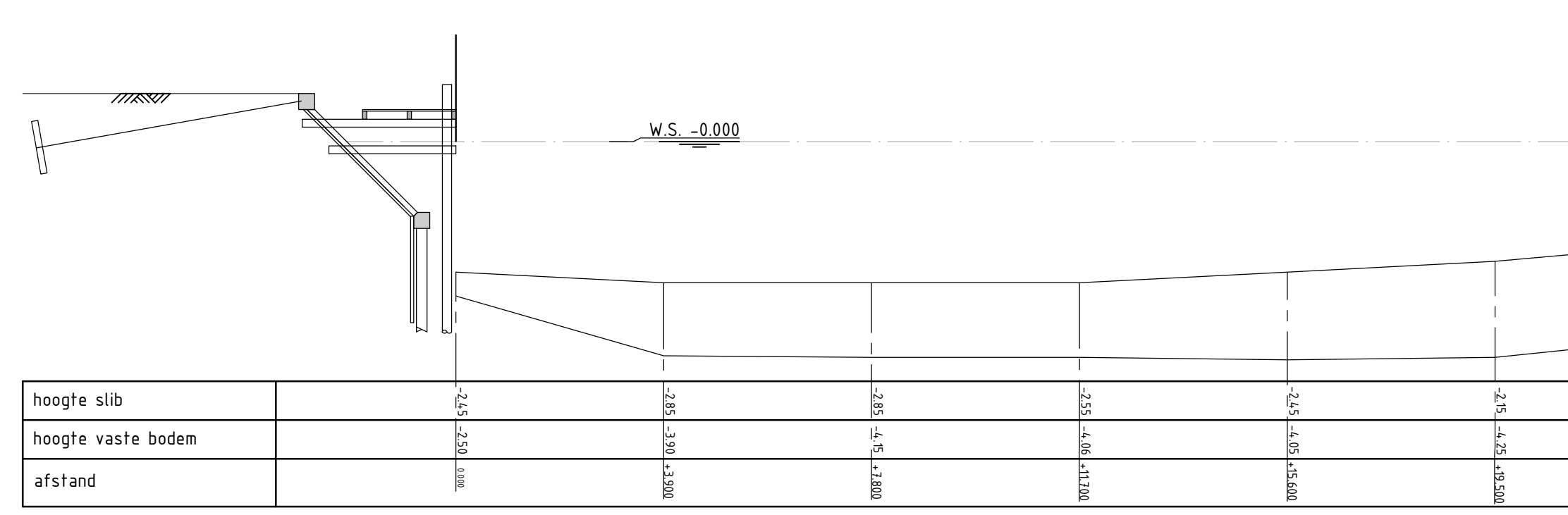
PROFIEL 4
SCHAAL 1:100



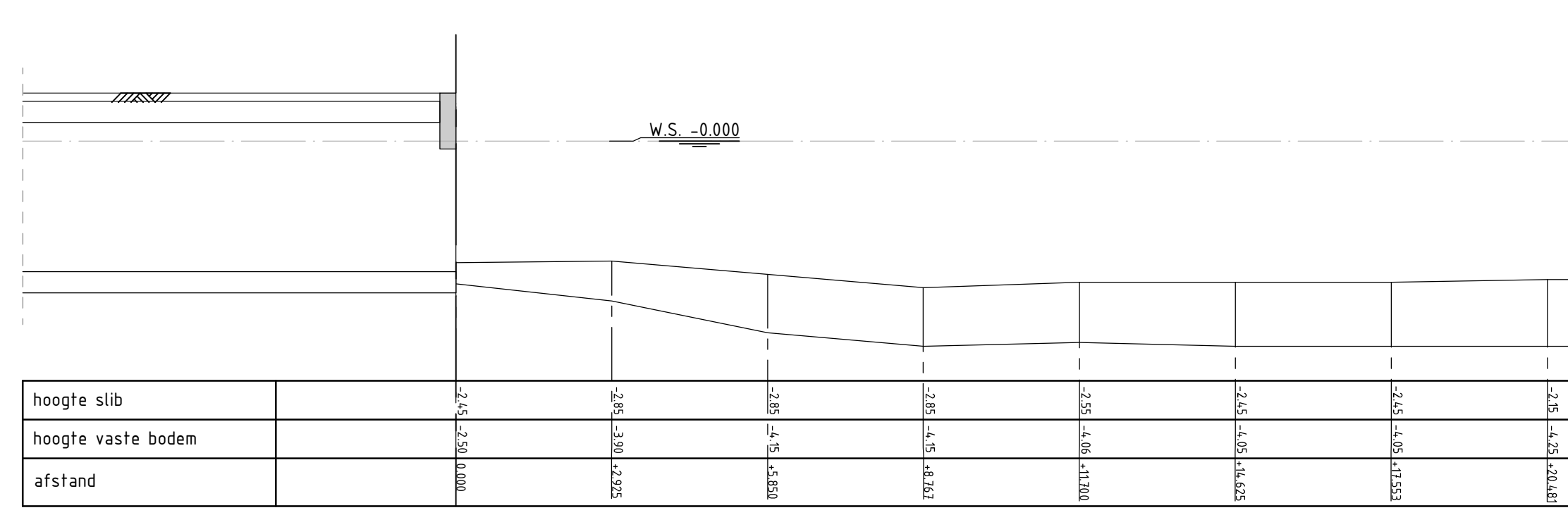
PROFIEL 5
SCHAAL 1:100



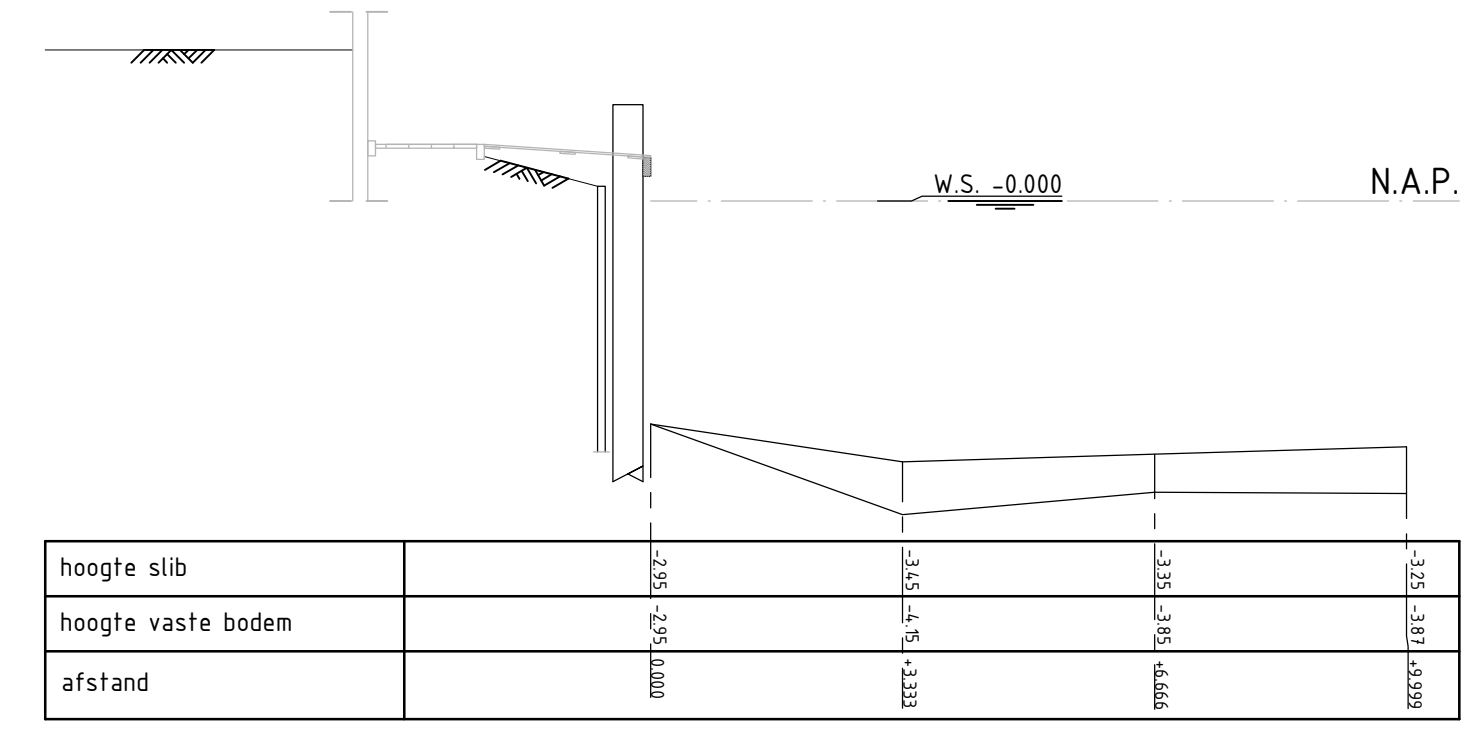
PROFIEL 6
SCHAAL 1:100



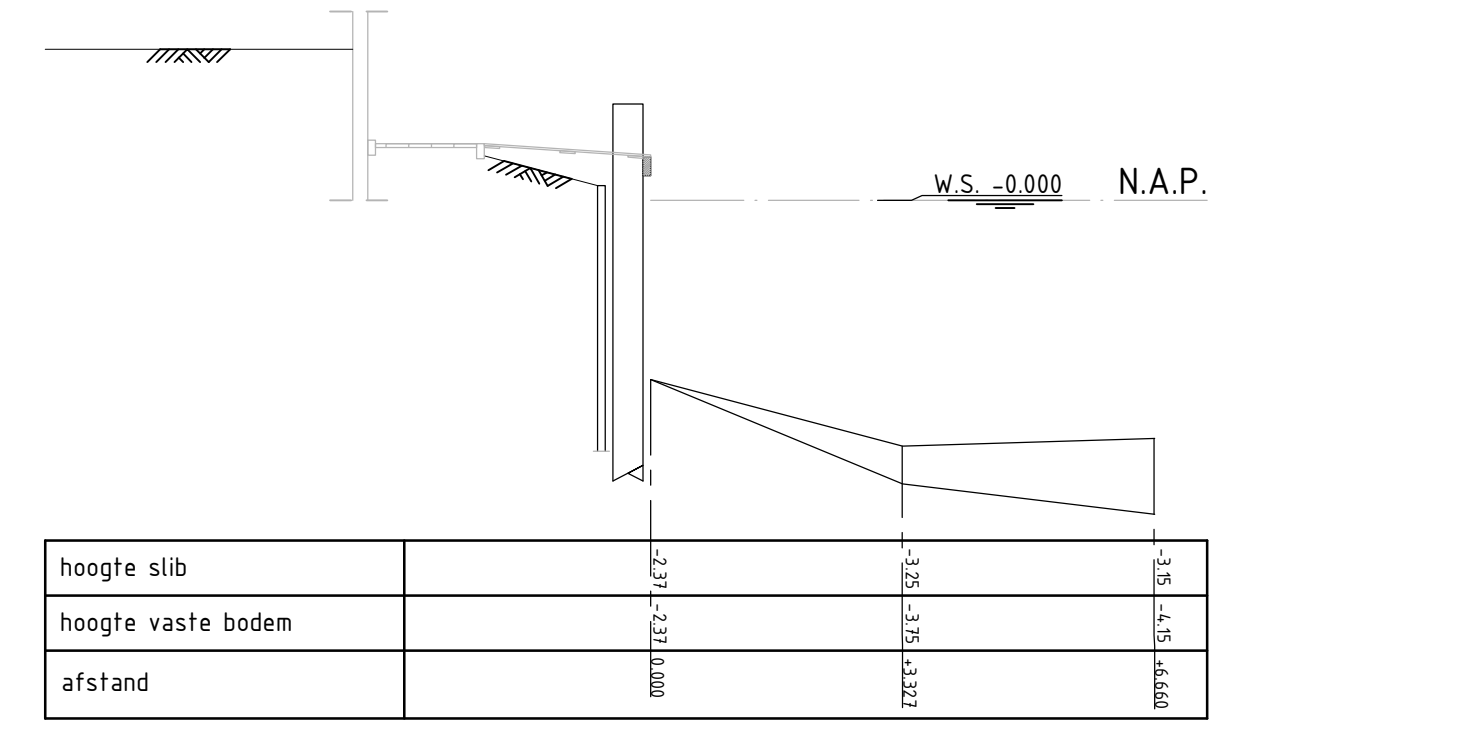
PROFIEL 7
SCHAAL 1:100



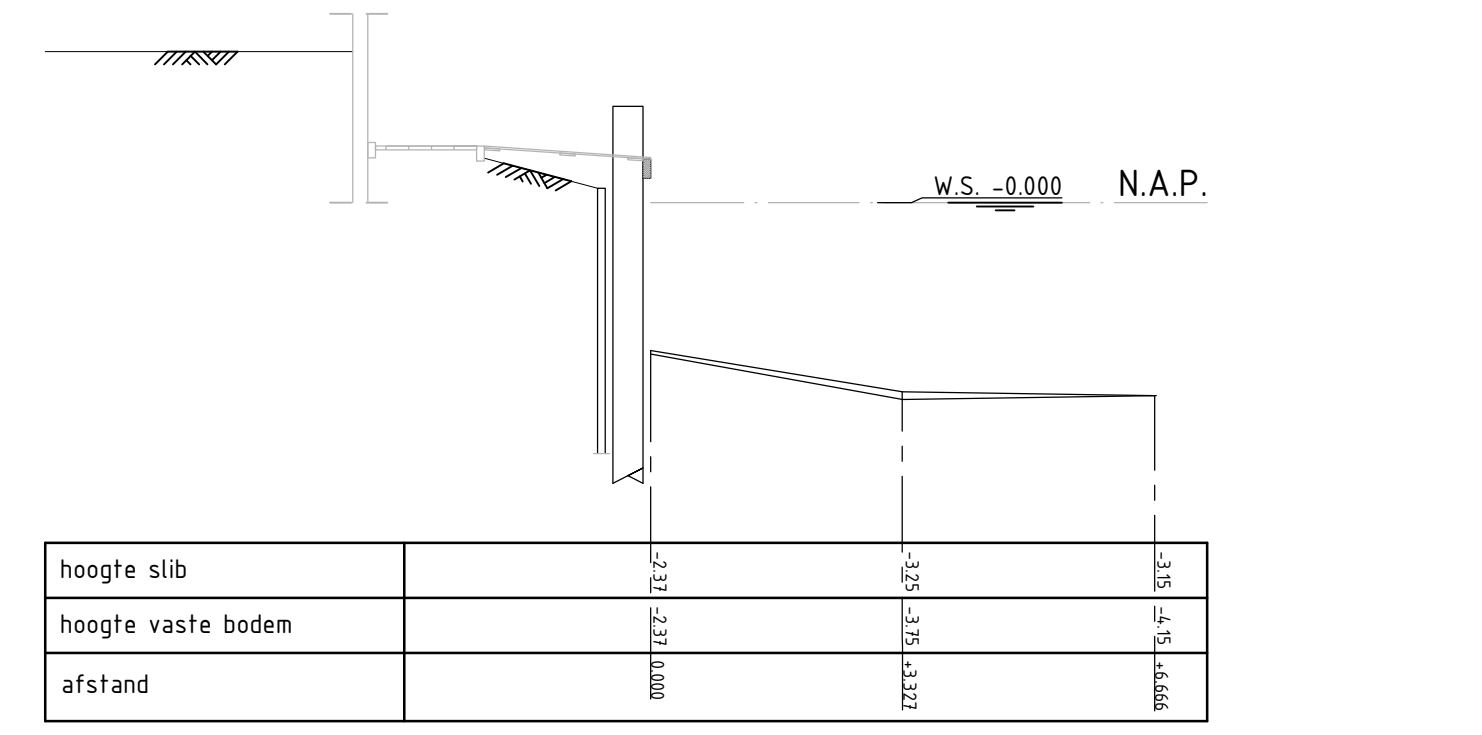
PROFIEL 8
SCHAAL 1:100



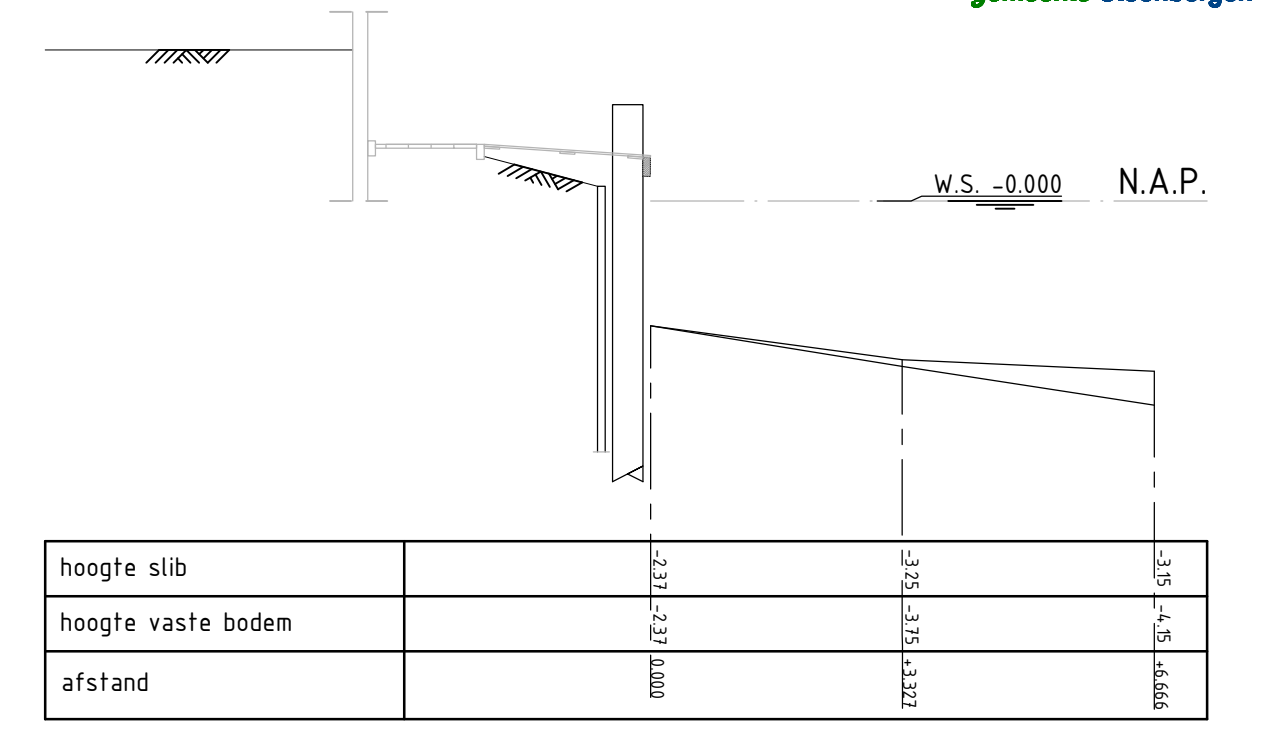
PROFIEL 9
SCHAAL 1:100



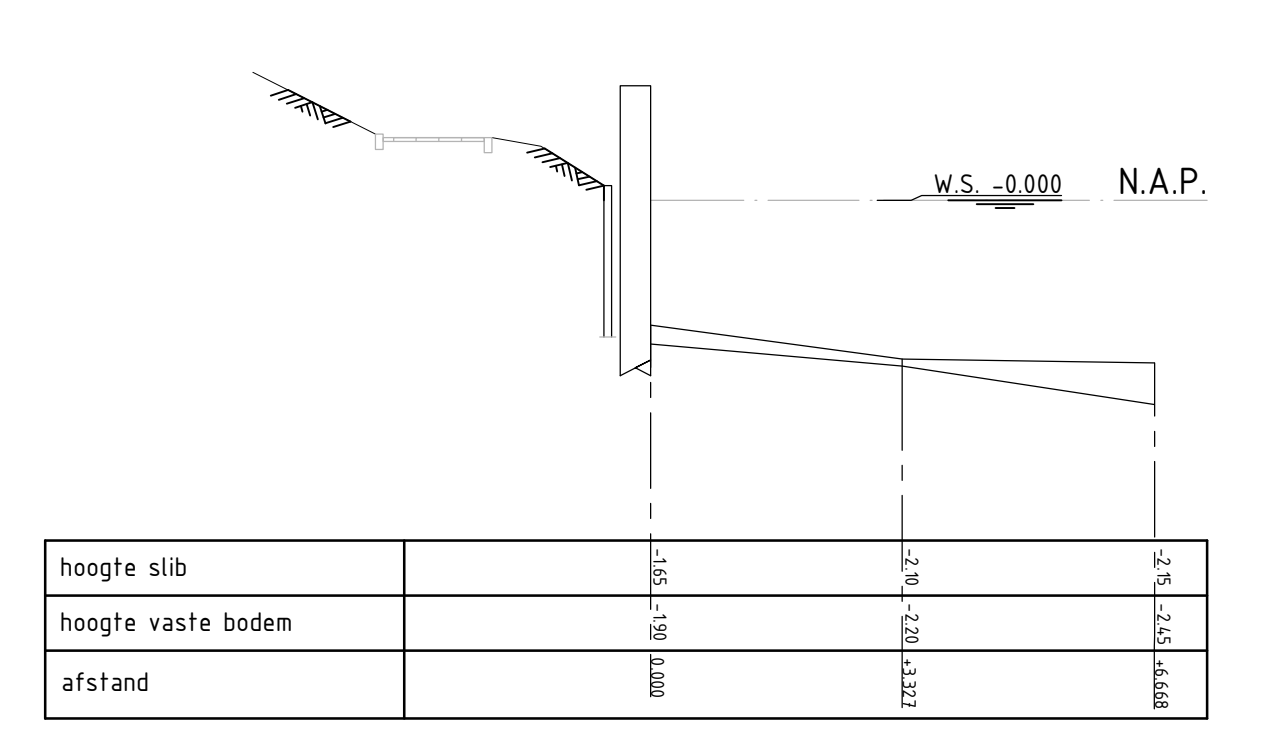
PROFIEL 10
SCHAAL 1:100



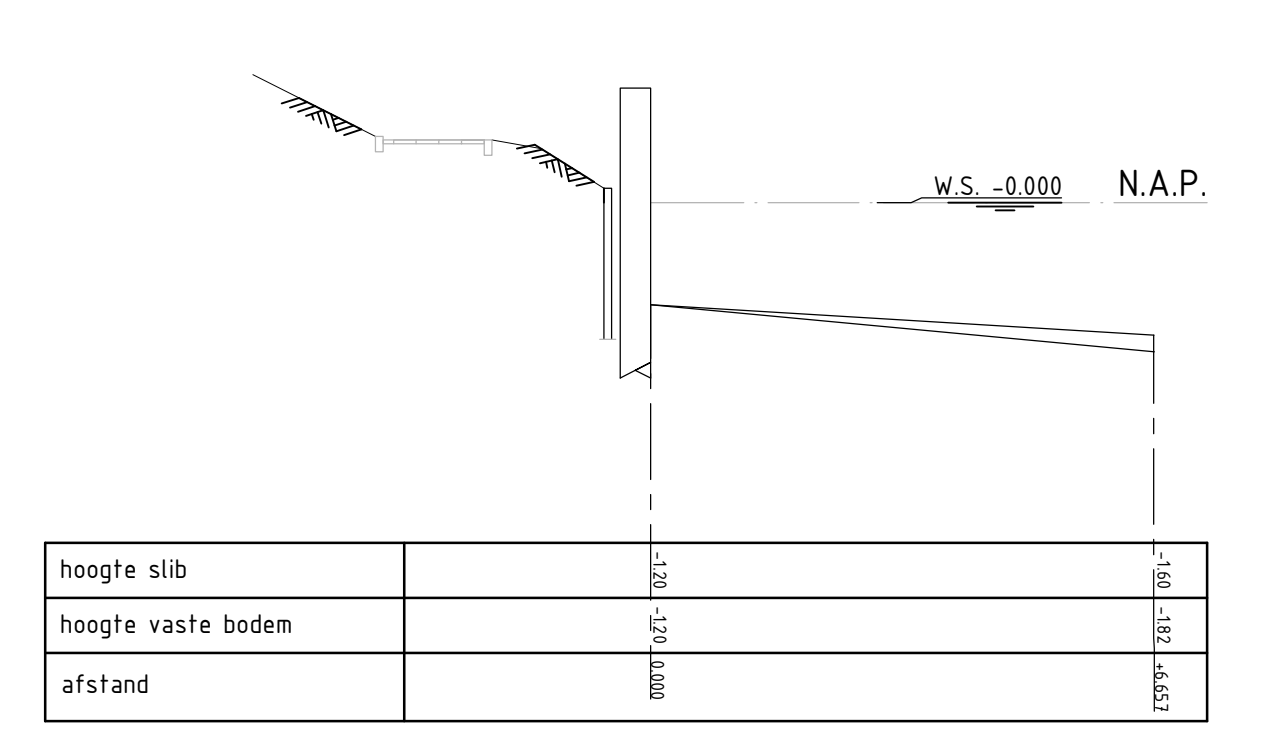
PROFIEL 11
SCHAAL 1:100



PROFIEL 12
SCHAAL 1:100



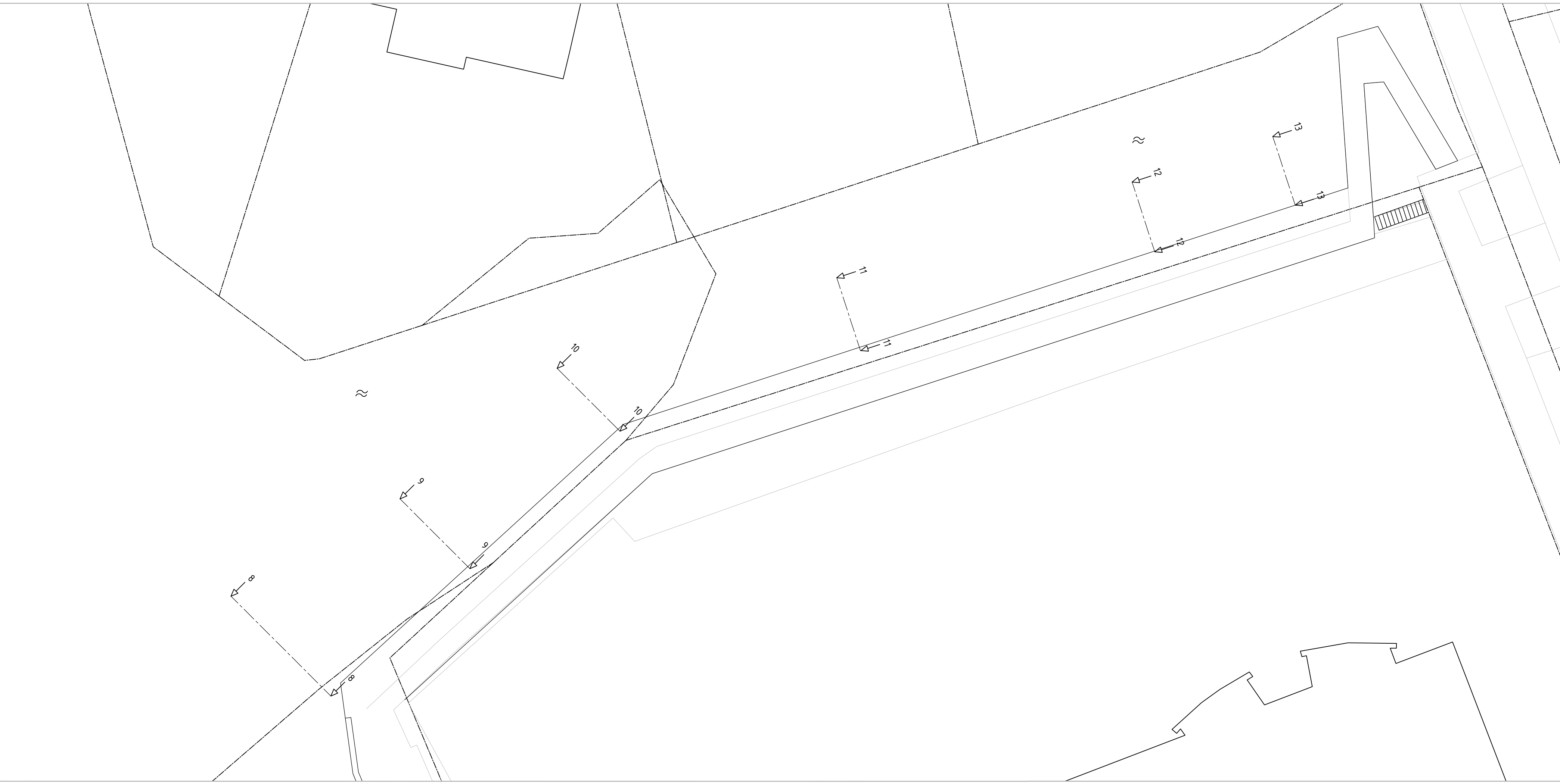
PROFIEL 13
SCHAAL 1:100



PROFIEL 13
SCHAAL 1:100



Behoort bij beschikking
d.d. 07-12-2015
nr.(s) ZK15001044
Medewerker
Publiekszaken/vergunningen

PROFIELEN ZWAAIKOM (STEIGER F)
SCHAAL 1:200

OPMERKINGEN
maatvoering in mm
maatvoering in het werk controleren
hoogtematen in m t.o.v. N.A.P.

LEGENDA

Ingenieursburo Maters en de Koning
Malthuislaan 8
4707 LZ Roosendaal
Tel: (0)165 524 524

Bloisweg 2
2905 AW Capelle a/d IJssel
Tel: (0)10 258 18 20

Weg- en Waterbouwkunde, Beton- en Staalconstructie, Bouwkunde, Grondmechanica
www.matersendekoning.nl

OPDRACHTGEVER
Gemeente Steenberg
Buiten de Vesten 1, 4602 GA, Steenberg

AMBIENT
AQUAVIA
Wervenvweg 3, 4551 MC, Sas van Gent

PROJECTONSCHRIJVING
Herinrichting haven Steenberg

TEKENINGEN
Bestaande doorsnede B2 Haven + B3 Havenkom
Bodempeiling o.b.v. inmeting
B2B3

DATUM	GETEKEND	GECONTROLEERD	OMSCHRIJVING	REVISIE
30 sep 2015				0

PROJ. NR. 8151110 TEK8 BLAD002 DO 0