

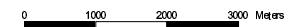
- Peilvakken
- Bodemcodes**
- Rd10A
- Rd10Cp
- Rd90A
- Rd90C
- Rn15C
- Rn44C
- Rn44Cv
- Rn44Cw
- Rn47C
- Rn52A
- Rn62Cp
- Rn66A
- Rn67C
- Rn67Cp
- Rn94C
- Rn95A
- Rn95C
- Zb30
- Zd30
- |f TERP
- |g MOERAS
- |g WATER
- |h BEBOUW
- |h DIJK



**Peilbesluiten
Quarles van Ufford**

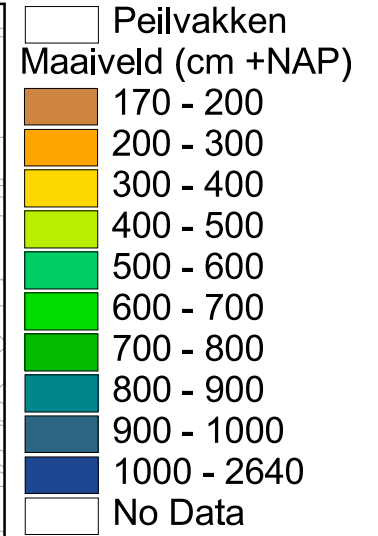
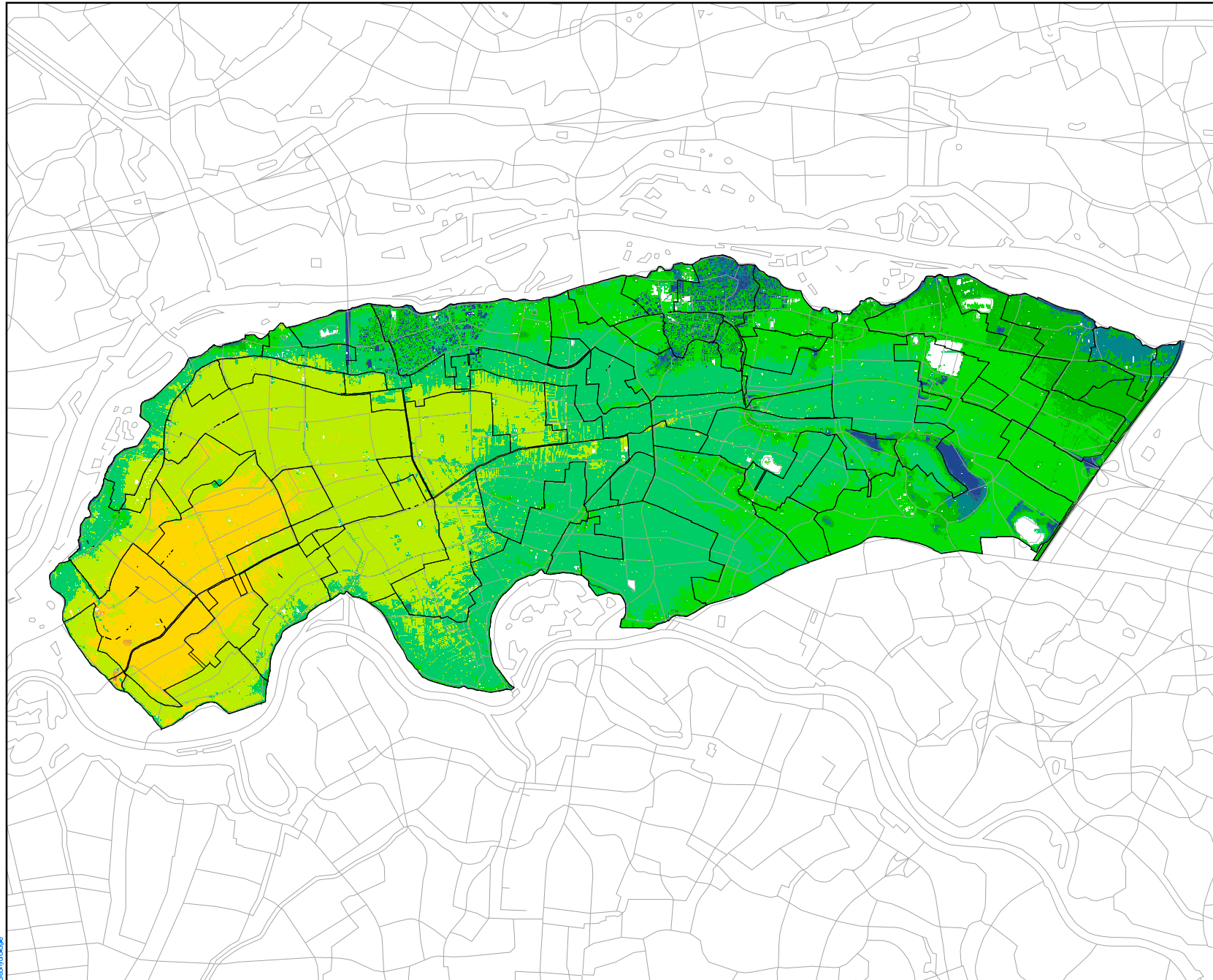
Waterschap Rivierenland

Bodemkaart



projectcode: TL136-1
 getekend: S.A. van den Bos
 versie: 1.0
 datum: 01-02-2005

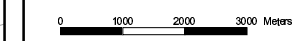




**Peilbesluiten
Quarles van Ufford**

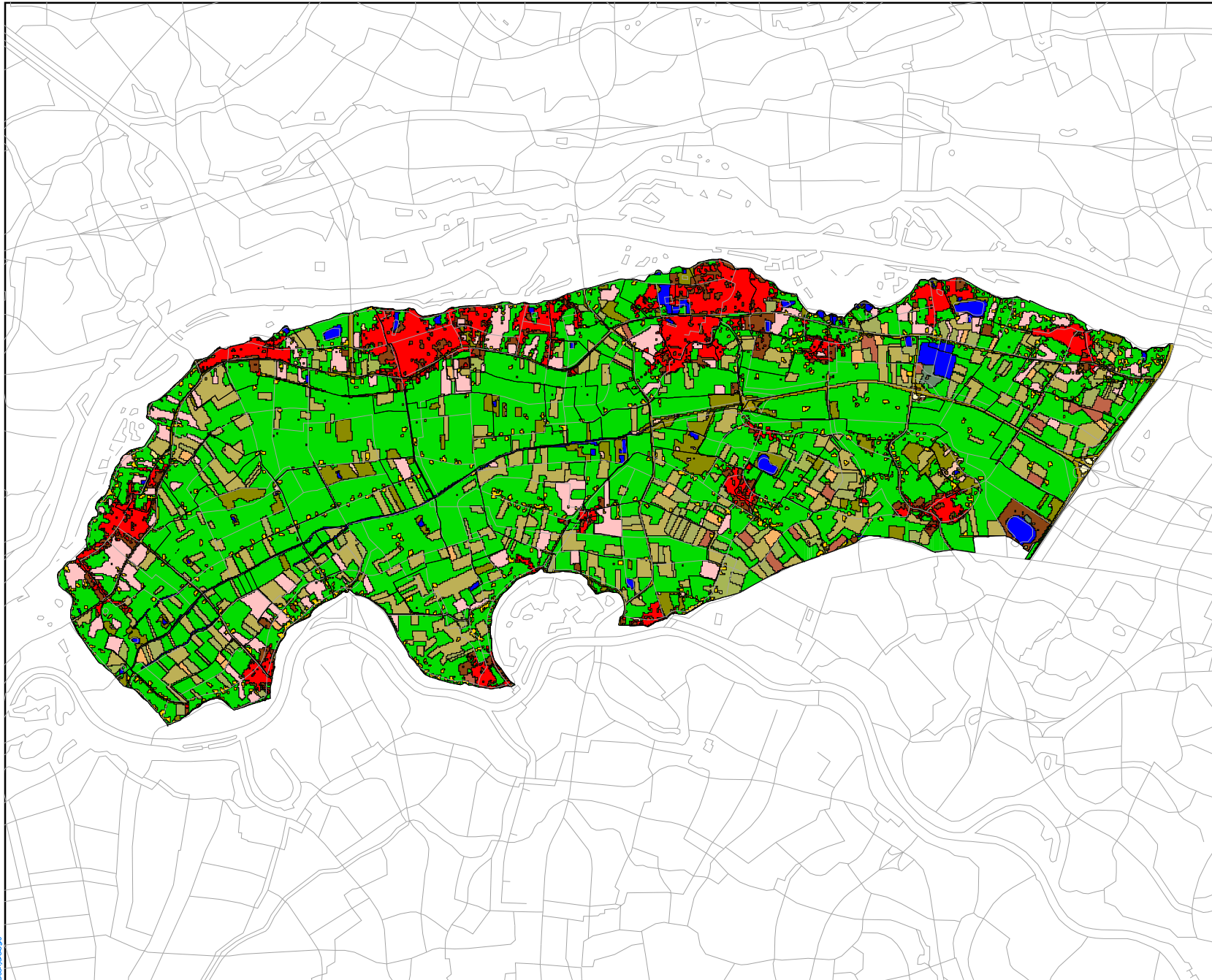
Waterschap Rivierenland

Maaiveldhoogte



projectcode: TL136-1
getekend: S.A. van den Bos
versie: 1.0
datum: 01-02-2005





- Peilvakken
- Landgebruik
- aardappelen
- bebouwing in agrarisch gebied
- bebouwing in buitengebied
- bieten
- boomgaard
- bos met dichte bebouwing
- glastuinbouw
- granen
- gras
- gras in bebouwd gebied
- hoofdwegen en spoorwegen
- kale grond in bebouwd buitengebied
- kale grond in natuurgebied
- loofbos
- loofbos in bebouwd gebied
- mais
- naaldbos
- naaldbos in bebouwd gebied
- overig open begroeid natuurgebied
- overige landbouwgewassen
- stedelijk bebouwd gebied
- zoet water



**Peilbesluiten
Quarles van Ufford**

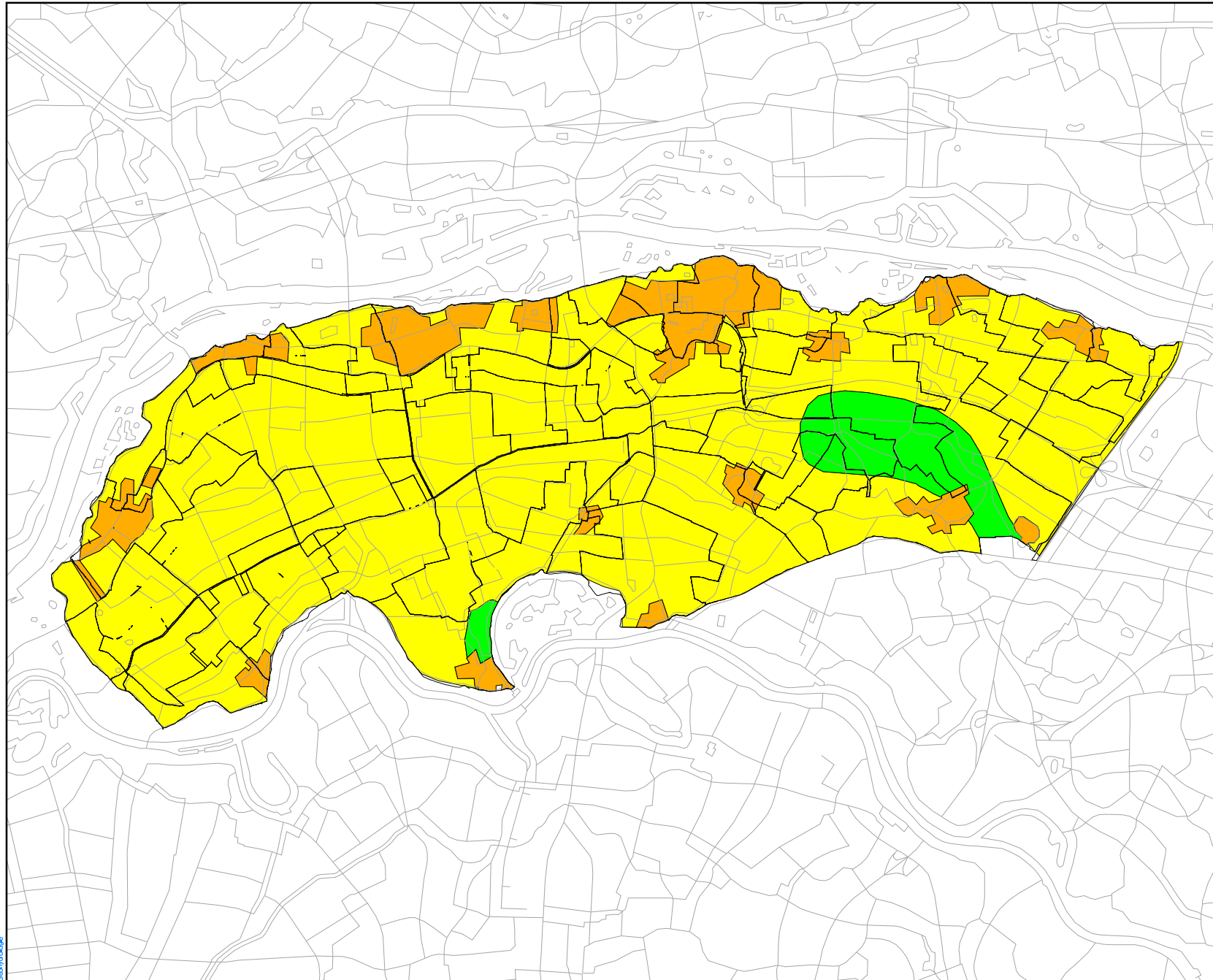
Waterschap Rivierenland

Landgebruik



projectcode: TL136-1
 getekend: S.A. van den Bos
 versie: 1.0
 datum: 01-02-2005





- Peilvakken
- Funcities
- FI: Water voor landbouw
 - FII: Water voor landbouw en niet-kwelafhankelijke landnatuur
 - FVI: Water voor stedelijk gebied

**Peilbesluiten
Quarles van Ufford**

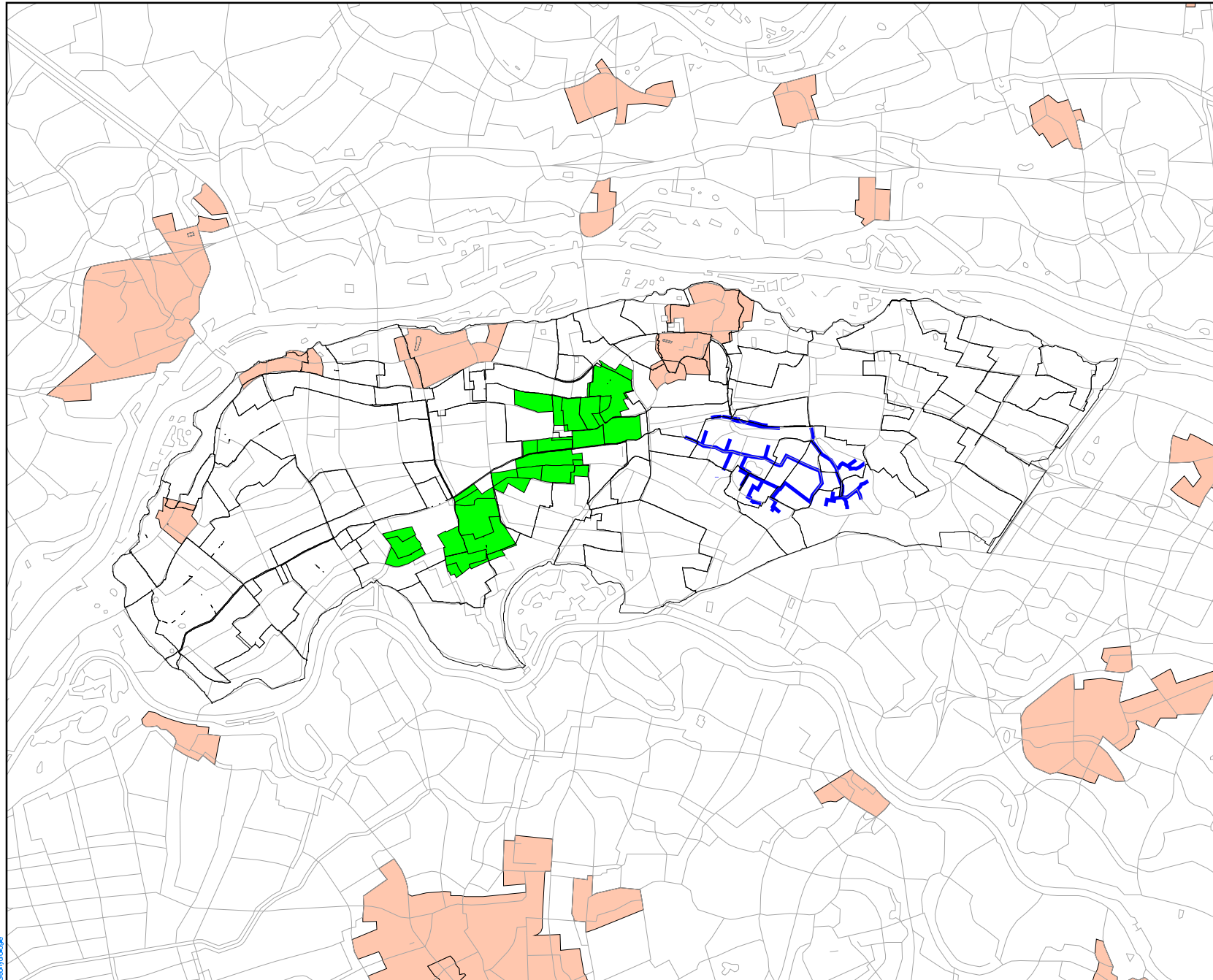
Waterschap Rivierenland

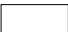



Funcatiegebieden

0 1000 2000 3000 Meters

projectcode: TL136-1
getekend: S.A. van den Bos
versie: 1.0
datum: 01-02-2005





-  Peilvakken
-  Weidevogelgebied
-  Bebouwing
-  SED-wateren

**Peilbesluiten
Quarles van Ufford**

Waterschap Rivierenland

SED-wateren en weidevogelgrasland

0 1000 2000 3000 Meters

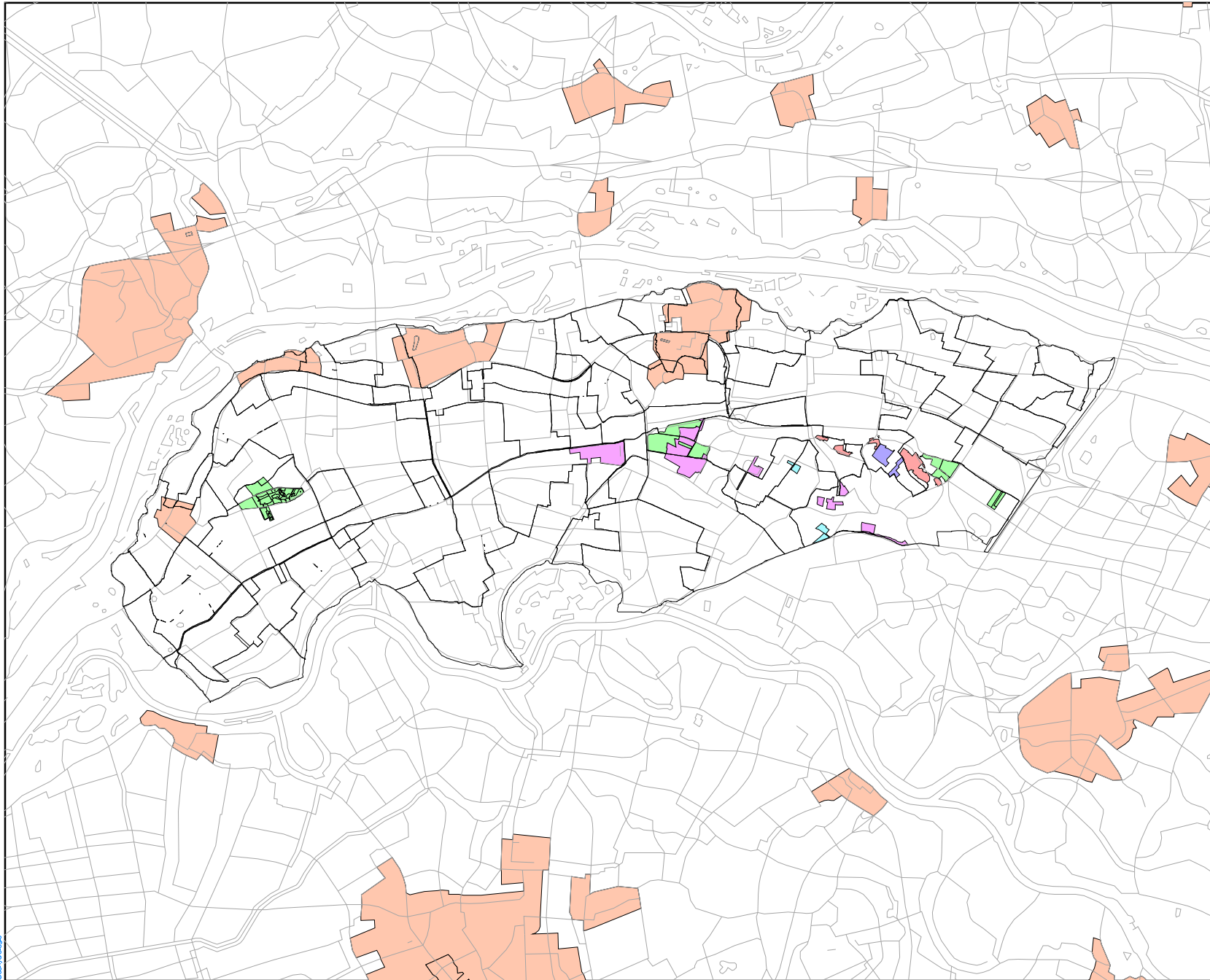
projectcode: TL136-1

getekend: S.A. van den Bos

versie: 1.0

datum: 01-02-2005



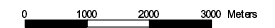


- Peilvakken
- Bebouwing
- Natuurdoeltypen**
- Arm droog bos
- Dotterbloemgrasland van veen en klei
- Elzenbroekbos
- Droog voedselrijk bos
- Vochtig tot nat voedselrijk bos

**Peilbesluiten
Quarles van Ufford**

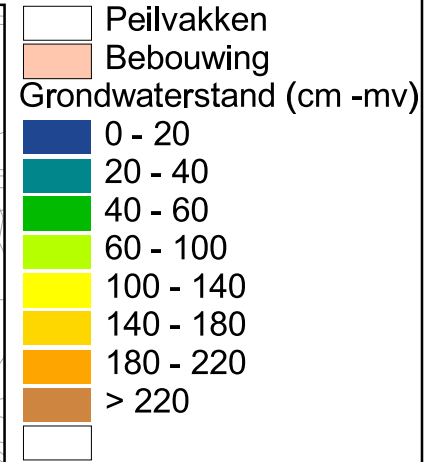
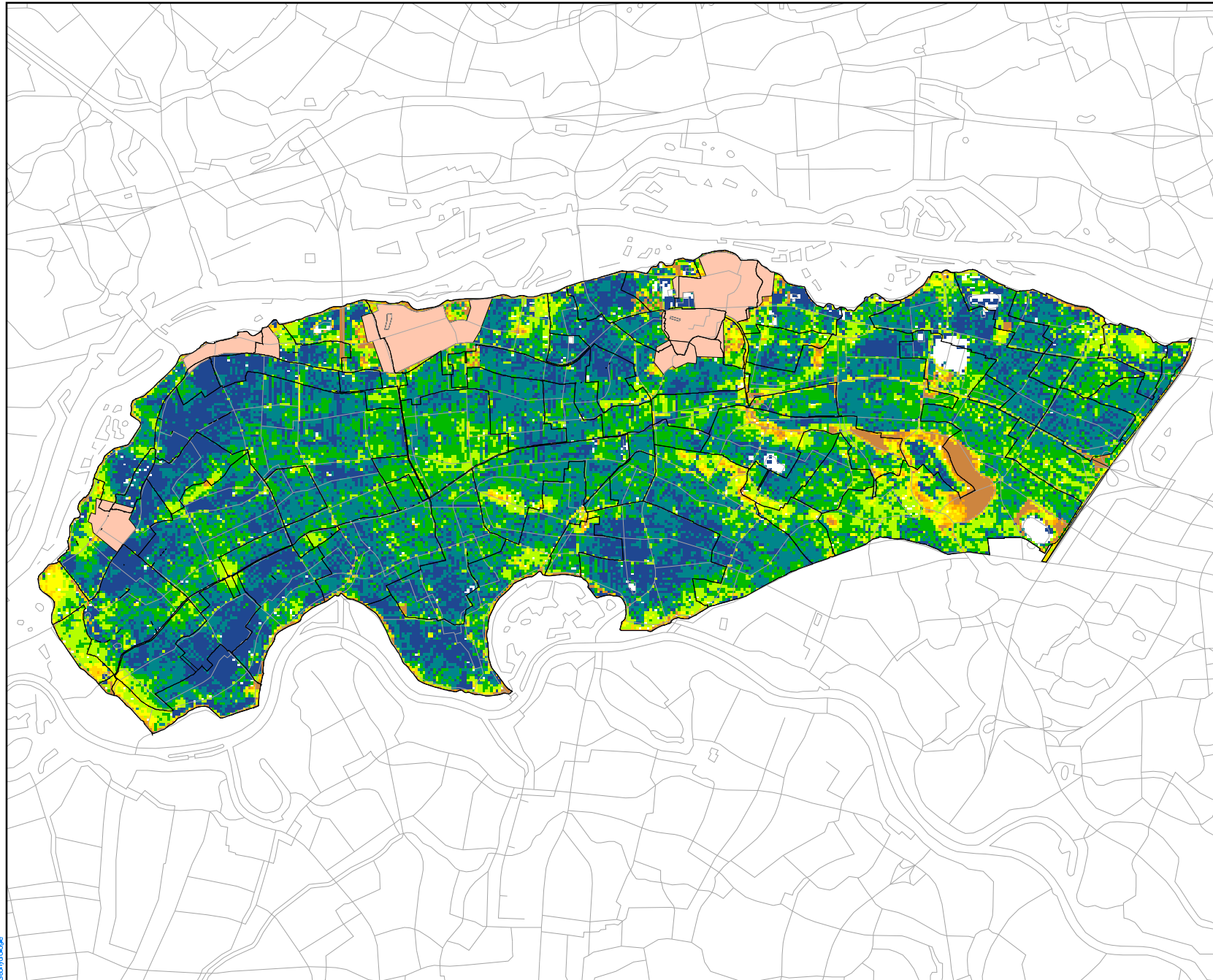
Waterschap Rivierenland

Natuurdoeltypen



projectcode: TL136-1
 getekend: S.A. van den Bos
 versie: 1.0
 datum: 01-02-2005

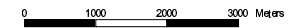




**Peilbesluiten
Quarles van Ufford**

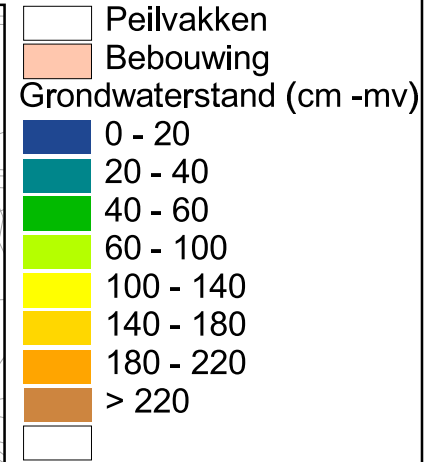
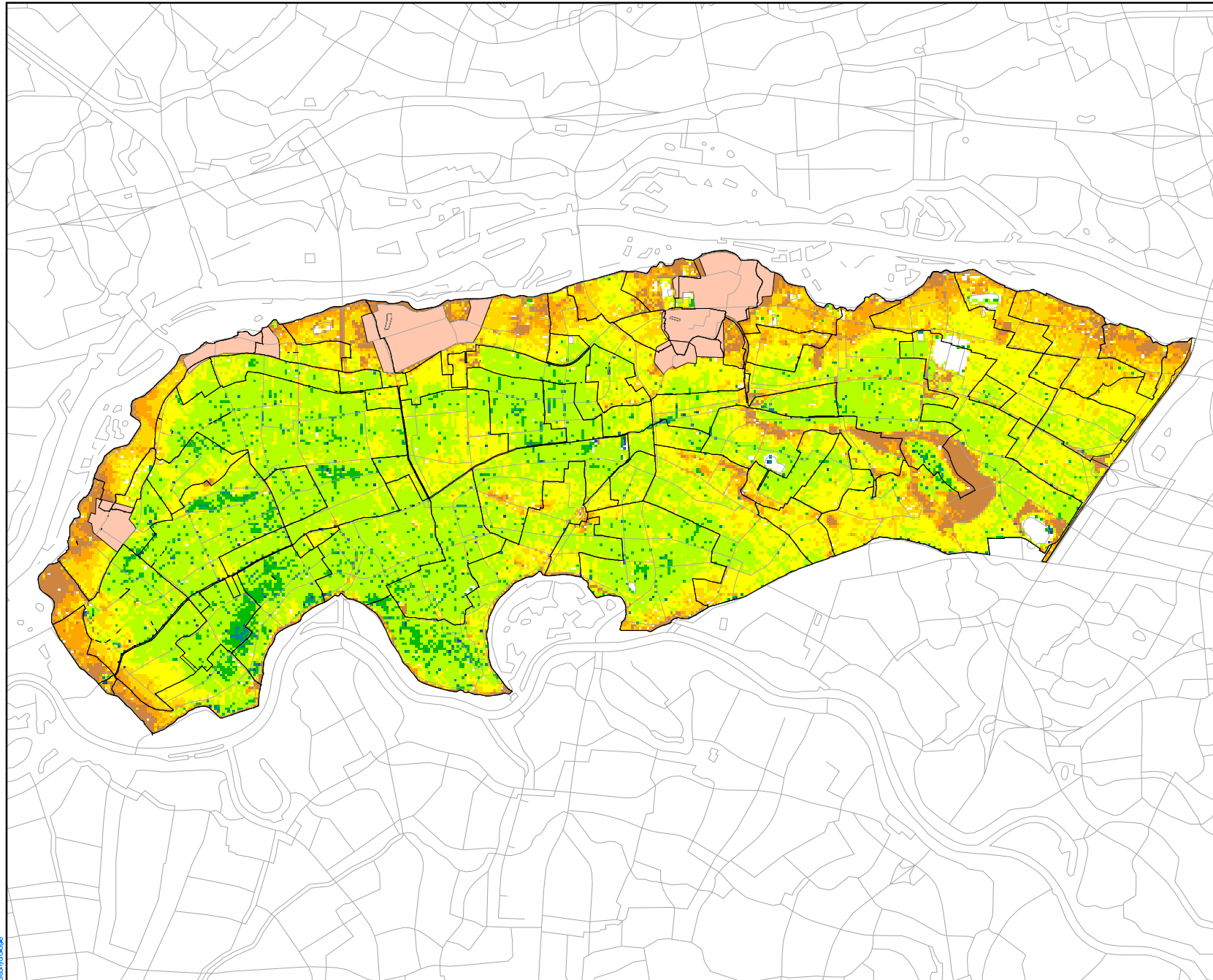
Waterschap Rivierenland

Doelrealisatie landbouw



projectcode: TL136-1
getekend: S.A. van den Bos
versie: 1.0
datum: 01-02-2005

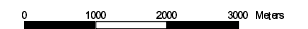




**Peilbesluiten
Quarles van Ufford**

Waterschap Rivierenland

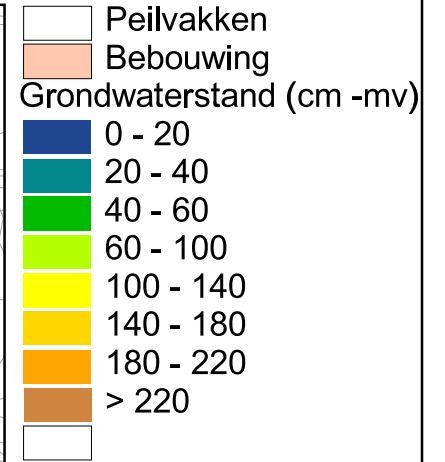
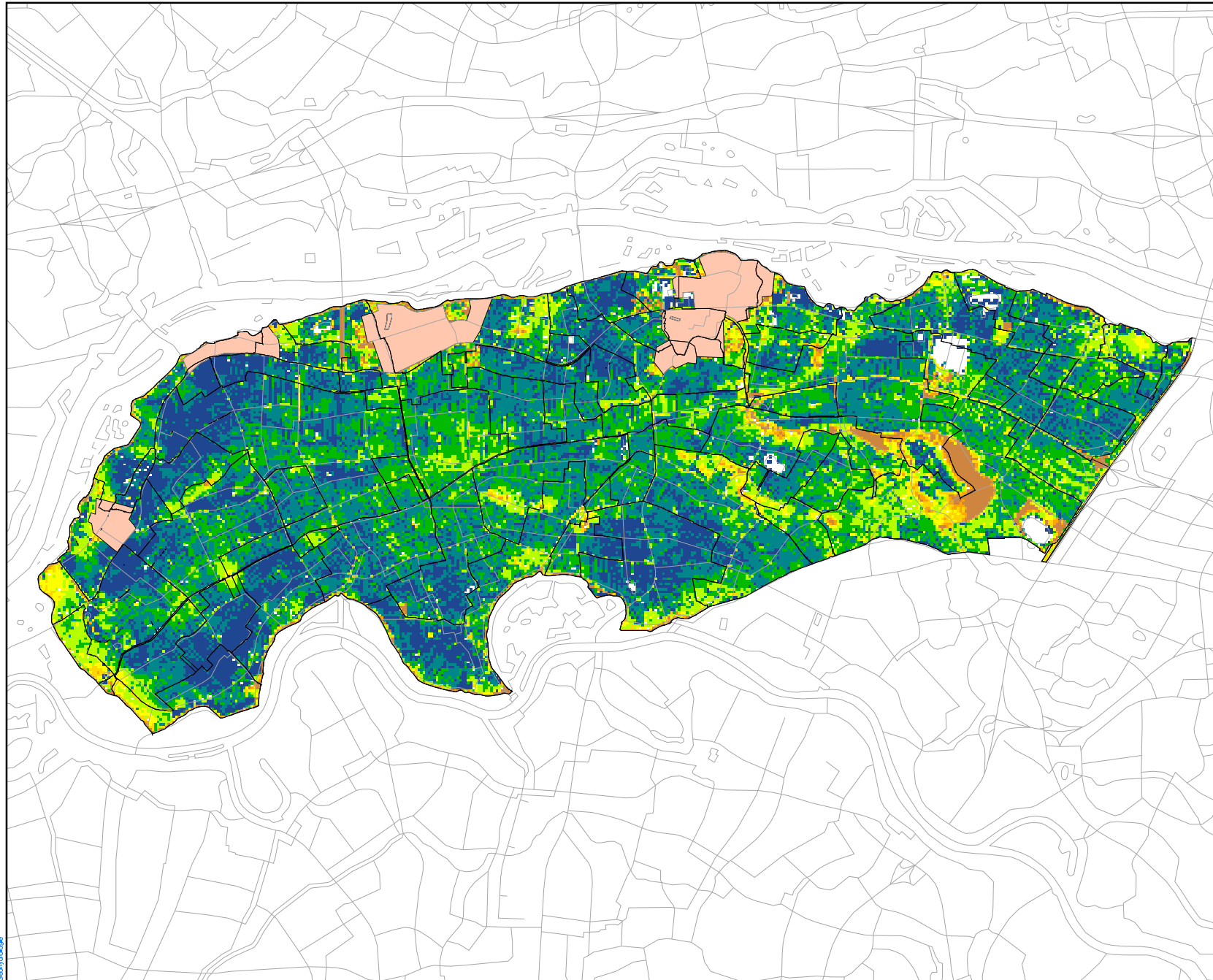
Doelrealisatie landbouw



projectcode: TL136-1
getekend: S.A. van den Bos
versie: 1.0
datum: 01-02-2005



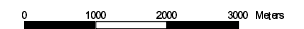
GeoBridges



**Peilbesluiten
Quarles van Ufford**

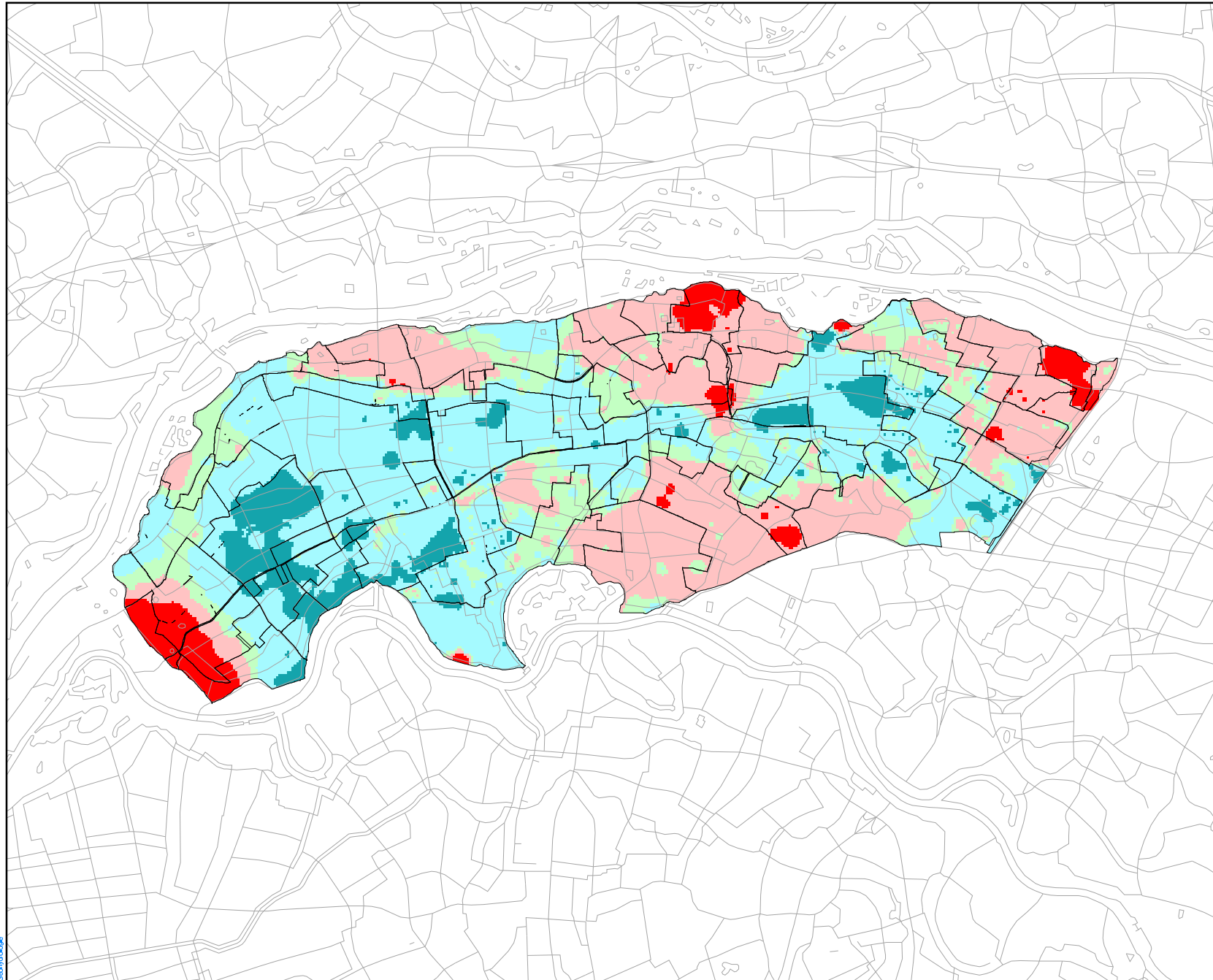
Waterschap Rivierenland








Doelrealisatie landbouw



projectcode: TL136-1
getekend: S.A. van den Bos
versie: 1.0
datum: 01-02-2005



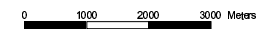


-  Peilvakken
- Kwel en infiltratie**
-  infiltratie >1 mm/dag
-  infiltratie 0.1 - 1 mm/dag
-  evenwicht kwel/infiltratie
-  kwel 0.1 - 1 mm/dag
-  kwel > 1 mm/dag
-  No Data

**Peilbesluiten
Quarles van Ufford**

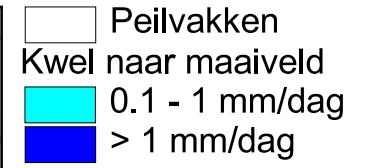
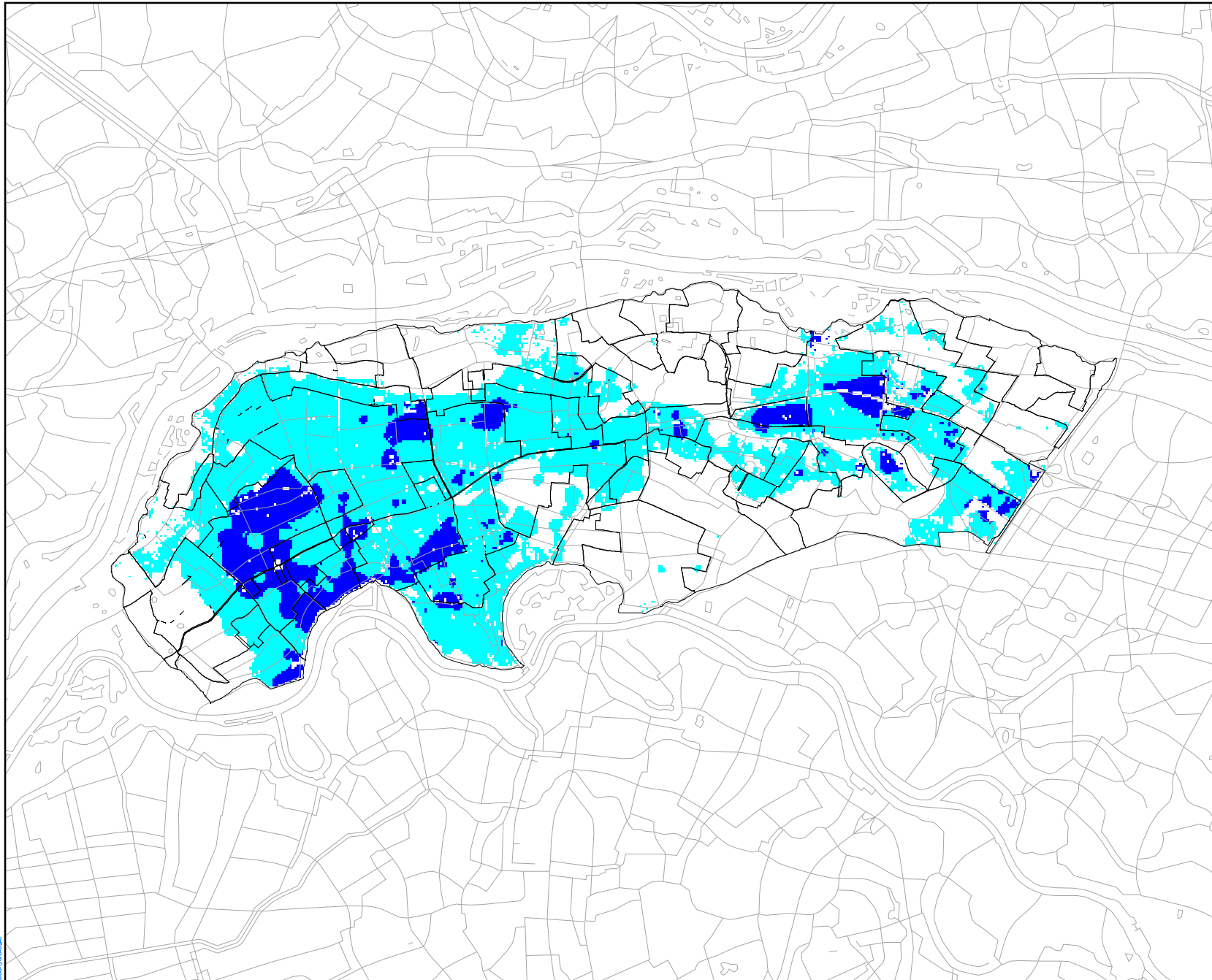
Waterschap Rivierenland

Kwel en infiltratie



projectcode: TL136-1
getekend: S.A. van den Bos
versie: 1.0
datum: 03-01-2005

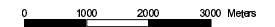




**Peilbesluiten
Quarles van Ufford**

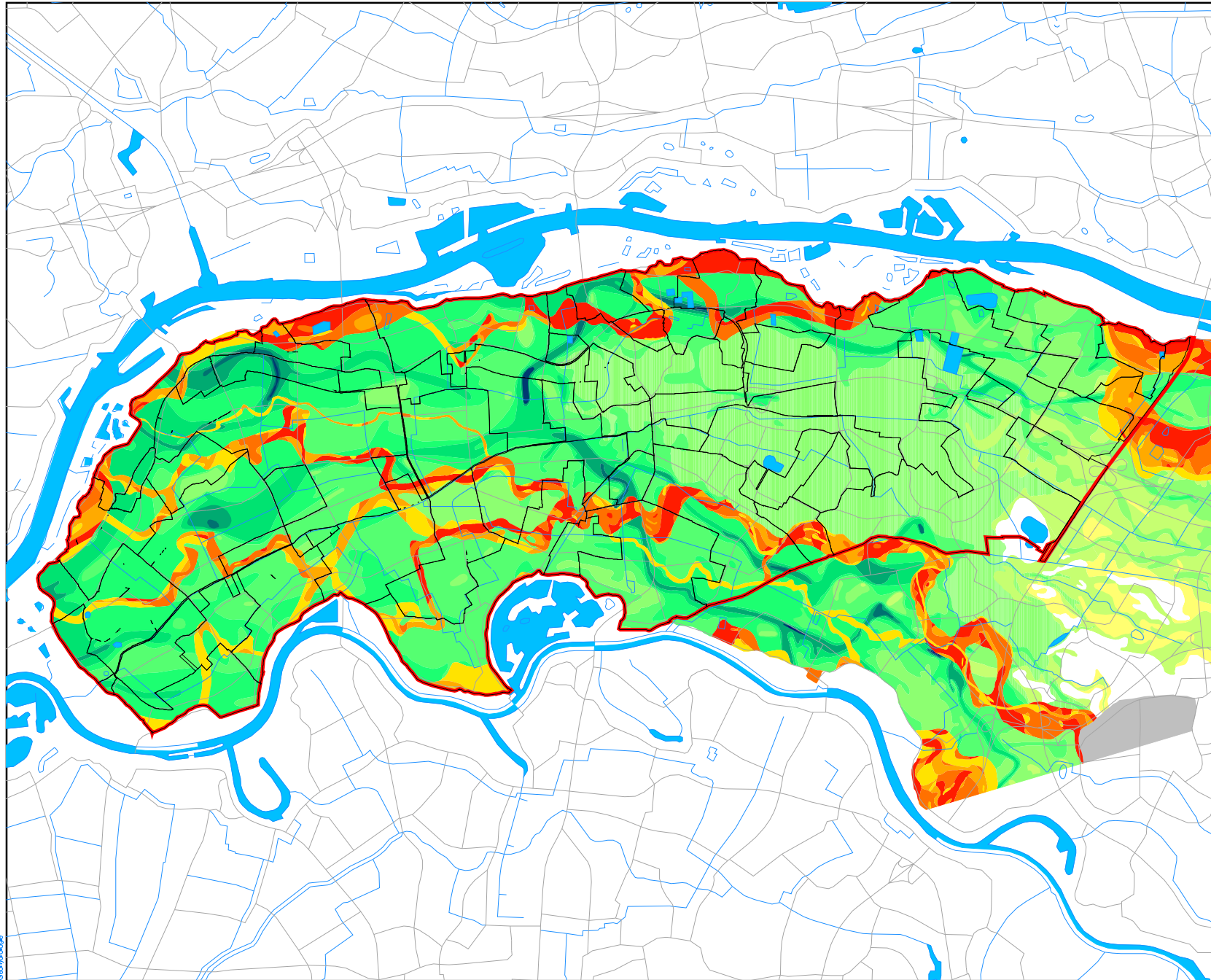
Waterschap Rivierenland

Kwel naar maaiveld



projectcode: TL136-1
getekend: S.A. van den Bos
versie: 1.0
datum: 03-01-2005



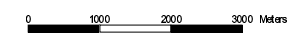


- Peilvakken
- Stroomgebied
- water
- Dikte zandbanen**
- Antropogeen verstoord
- Ondoorl.mat.dikte 9-10 m
- Ondoorl.mat.dikte 8-9 m
- Ondoorl.mat.dikte 7-8 m
- Ondoorl.mat.dikte 6-7 m
- Ondoorl.mat.dikte 5-6 m
- Ondoorl.mat.dikte 4-5 m
- Ondoorl.mat.dikte 3-4 m
- Ondoorl.mat.dikte 2-3 m
- Ondoorl.mat.dikte 1-2 m
- Ondoorl.mat.dikte 0-1 m
- Doorl.mat.top 3.0-6.0 m-mv
- Doorl.mat.top 2.0-3.0 m-mv
- Doorl.mat.top 1.5-2.0 m-mv
- Doorl.mat.top 1.0-1.5 m-mv
- Doorl.mat.top < 1.0 m-mv

**Peilbesluiten
Quarles van Ufford**

Waterschap Rivierenland

Zandbanenkaart



projectcode: TL136-1
 getekend: S.A. van den Bos
 versie: 1.0
 datum: 01-02-2005

