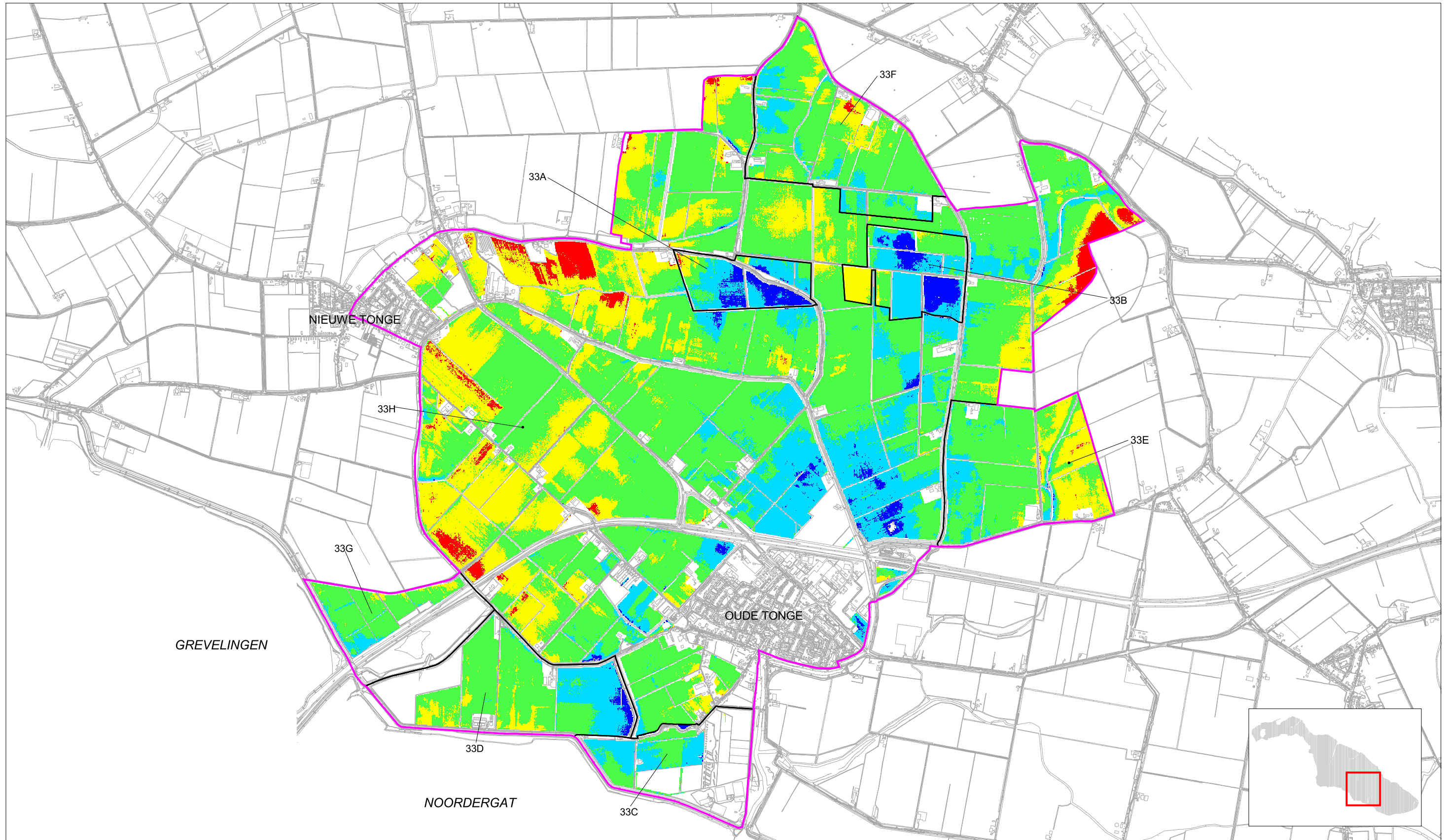



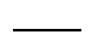






TE DROOG TE NAT DE HAAS VAN DORSSER (HUIDIGE SITUATIE)




LEGENDA

- | | | | |
|---|----------|---|------------------|
|  | te nat |  | bemaalingsgebied |
|  | nat |  | grens peilgebied |
|  | goed | | |
|  | droog | | |
|  | te droog | | |

PROJECT: PEILBESLUITEN GOEREE-OVERFLAKKEE
 PROJECTNUMMER: 12070110
 DATUM: 22 april 2005
 SCHAAAL: 1 : 30.000
 TEKENINGNUMMER: 5

Opdrachtgever:  WATERSCHAP GOEREE-OVERFLAKKEE
 MIDDELHARNIS

Vervaardigd door:  INGENIEURS BUREAU BCC