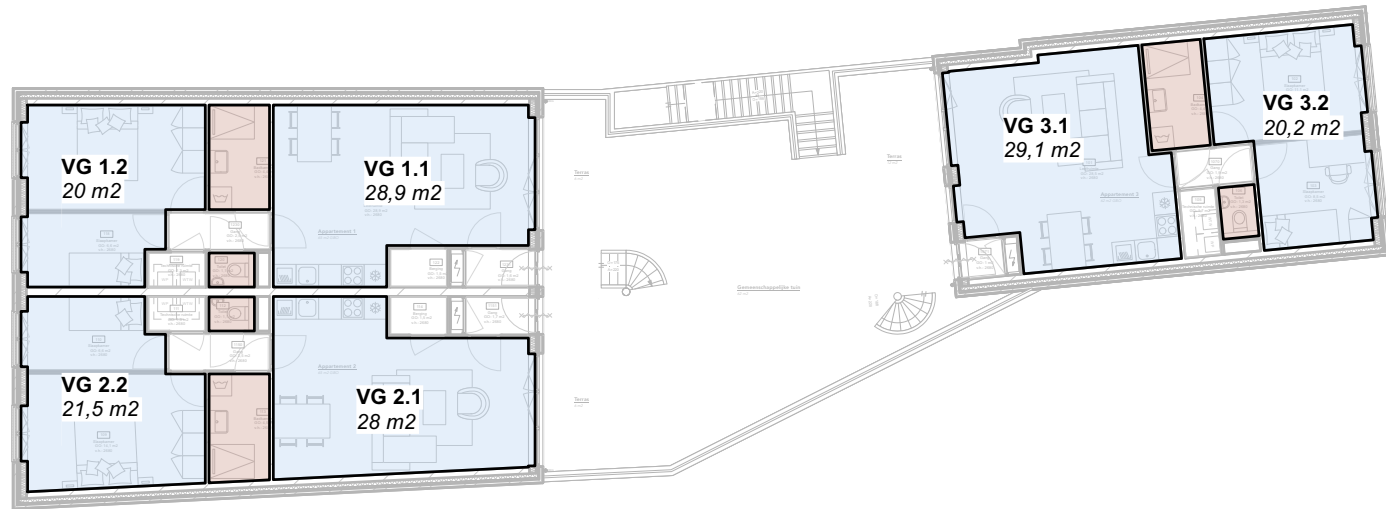


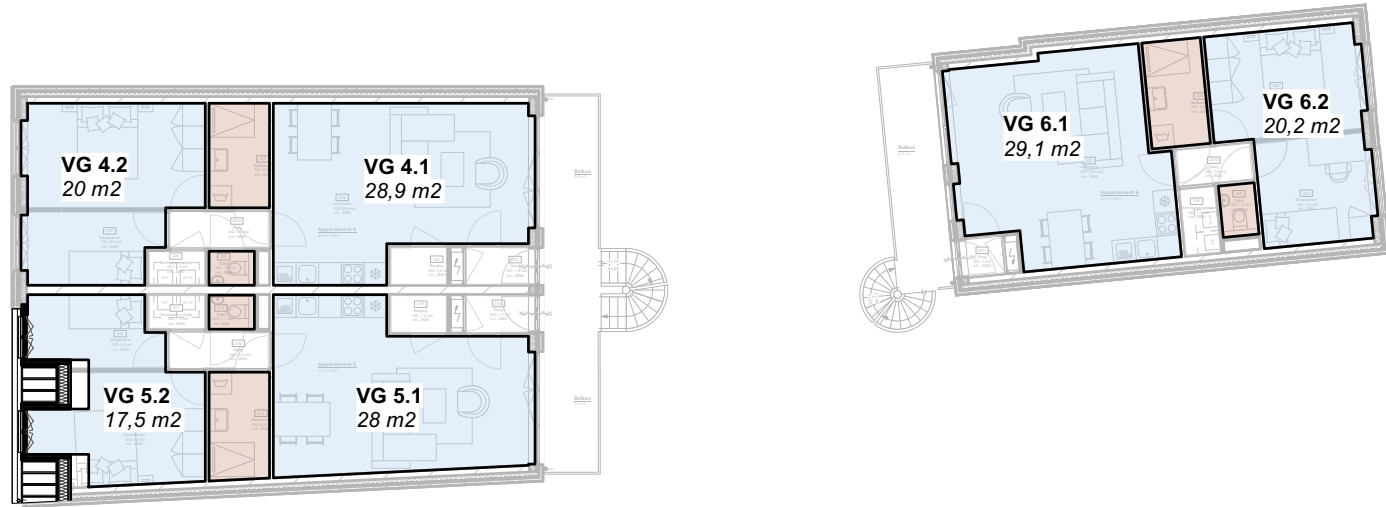
Begane grond

Schaal: 1:200



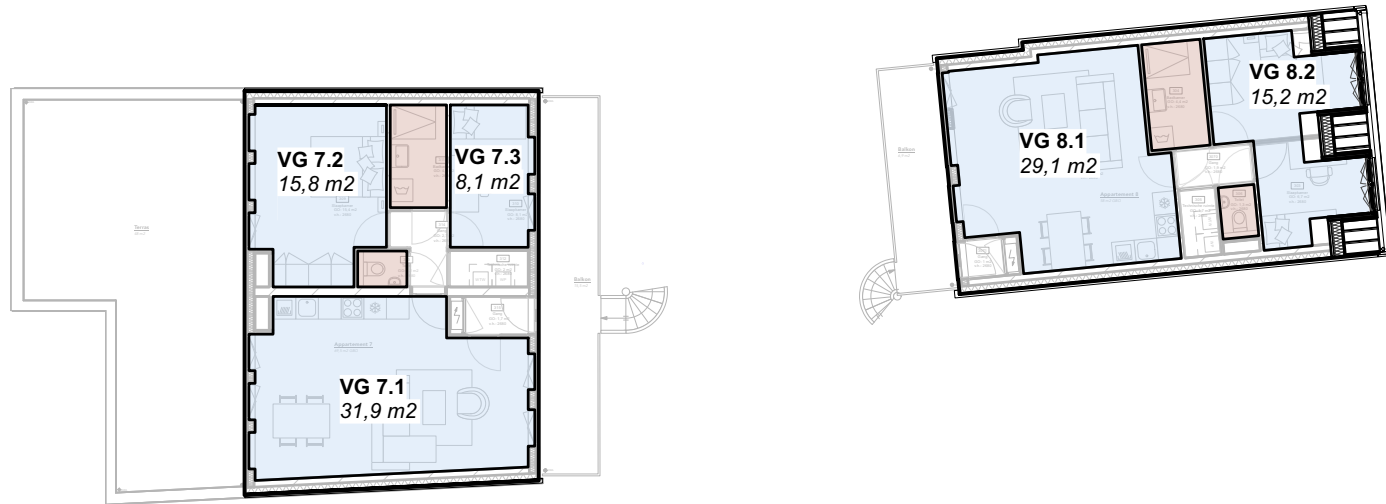
Eerste verdieping

Schaal: 1:200



Tweede verdieping

Schaal: 1:200



Derde verdieping

Schaal: 1:200

Ventilatieberekening

Conform bouwbesluit onderdeel 3.6.1 Luchtverversing nieuwbouw

| Functie | VG | eis | dm³/s IN | dm³/s UIT | dm³/s van o.s | dm³/s naar o.s. | notitie |
|-----------------------------------|---------------------|-----|----------|-----------|---------------|-----------------|---|
| Begane grond | | | | | | | |
| Commerciële ruimte | | | | | | | |
| | VG 0.1 (9 personen) | 36 | 36 | 0 | 0 | 36 | |
| | Pantry | 0 | 0 | 29 | 29 | 0 | |
| | Toilet | 7 | 0 | 7 | 7 | 0 | |
| Gemeenschappelijke verkeersruimte | | | | | | | |
| | GVR 0.2 40 m2 | 20 | 23 | 0 | 0 | 23 | |
| | Technische ruimte | 0 | 0 | 5 | 5 | 0 | |
| | Afvalruimte | 18 | 0 | 18 | 18 | 0 | |
| Eerste verdieping | | | | | | | |
| Woning 1 | | | | | | | |
| | VG 1.1 28,9 m2 | 26 | 26 | 21 | 0 | 4 | Kleine slaapkamer is 6,6 m2 dus ≥ 7 dm³/s |
| | VG 1.2 20 m2 | 19 | 19 | 0 | 0 | 19 | |
| | Toilet | 7 | 0 | 7 | 7 | 0 | |
| | Badruimte | 14 | 0 | 16 | 16 | 0 | |
| Woning 2 | | | | | | | |
| | VG 2.1 28 m2 | 26 | 26 | 21 | 0 | 4 | Kleine slaapkamer is 6,6 m2 dus ≥ 7 dm³/s |
| | VG 2.2 21,5 m2 | 20 | 20 | 0 | 0 | 20 | |
| | Toilet | 7 | 0 | 7 | 7 | 0 | |
| | Badruimte | 14 | 0 | 17 | 17 | 0 | |
| Woning 3 | | | | | | | |
| | VG 3.1 29,1 m2 | 27 | 27 | 21 | 0 | 5 | Kleine slaapkamer is 6,6 m2 dus ≥ 7 dm³/s |
| | VG 3.2 20,2 m2 | 20 | 20 | 0 | 0 | 20 | |
| | Toilet | 7 | 0 | 7 | 7 | 0 | |
| | Badruimte | 14 | 0 | 18 | 18 | 0 | |
| Tweede verdieping | | | | | | | |
| Woning 4 | | | | | | | |
| | VG 4.1 28,9 m2 | 26 | 26 | 21 | 0 | 4 | Kleine slaapkamer is 6,6 m2 dus ≥ 7 dm³/s |
| | VG 4.2 20 m2 | 19 | 19 | 0 | 0 | 19 | |
| | Toilet | 7 | 0 | 7 | 7 | 0 | |
| | Badruimte | 14 | 0 | 16 | 16 | 0 | |
| Woning 5 | | | | | | | |
| | VG 5.1 28 m2 | 26 | 26 | 21 | 0 | 4 | Kleine slaapkamer is 6,3 m2 dus ≥ 7 dm³/s |
| | VG 5.2 17,5 m2 | 17 | 17 | 0 | 0 | 17 | |
| | Toilet | 7 | 0 | 7 | 7 | 0 | |
| | Badruimte | 14 | 0 | 14 | 14 | 0 | |
| Woning 6 | | | | | | | |
| | VG 6.1 29,1 m2 | 27 | 27 | 21 | 0 | 5 | Kleine slaapkamer is 6,6 m2 dus ≥ 7 dm³/s |
| | VG 6.2 20,2 m2 | 20 | 20 | 0 | 0 | 20 | |
| | Toilet | 7 | 0 | 7 | 7 | 0 | |
| | Badruimte | 14 | 0 | 18 | 18 | 0 | |
| Derde verdieping | | | | | | | |
| Woning 7 | | | | | | | |
| | VG 7.1 31,9 m2 | 29 | 29 | 29 | 0 | 0 | |
| | VG 7.2 15,8 m2 | 15 | 15 | 0 | 0 | 15 | |
| | VG 7.3 8,1 m2 | 9 | 9 | 0 | 0 | 9 | |
| | Toilet | 7 | 0 | 7 | 7 | 0 | |
| | Badruimte | 14 | 0 | 17 | 17 | 0 | |
| Woning 8 | | | | | | | |
| | VG 6.1 29,1 m2 | 27 | 27 | 21 | 0 | 5 | Kleine slaapkamer is 6,6 m2 dus ≥ 7 dm³/s |
| | VG 6.2 15,2 m2 | 16 | 16 | 0 | 0 | 16 | |
| | Toilet | 7 | 0 | 7 | 7 | 0 | |
| | Badruimte | 14 | 0 | 14 | 14 | 0 | |

