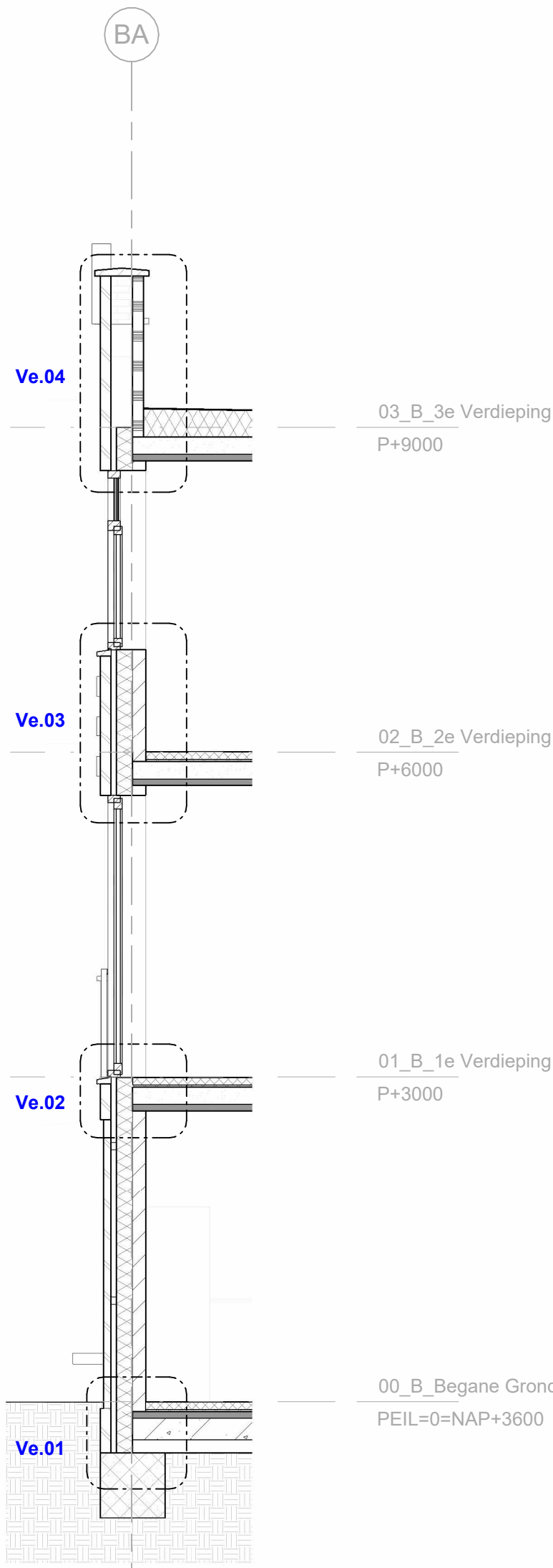
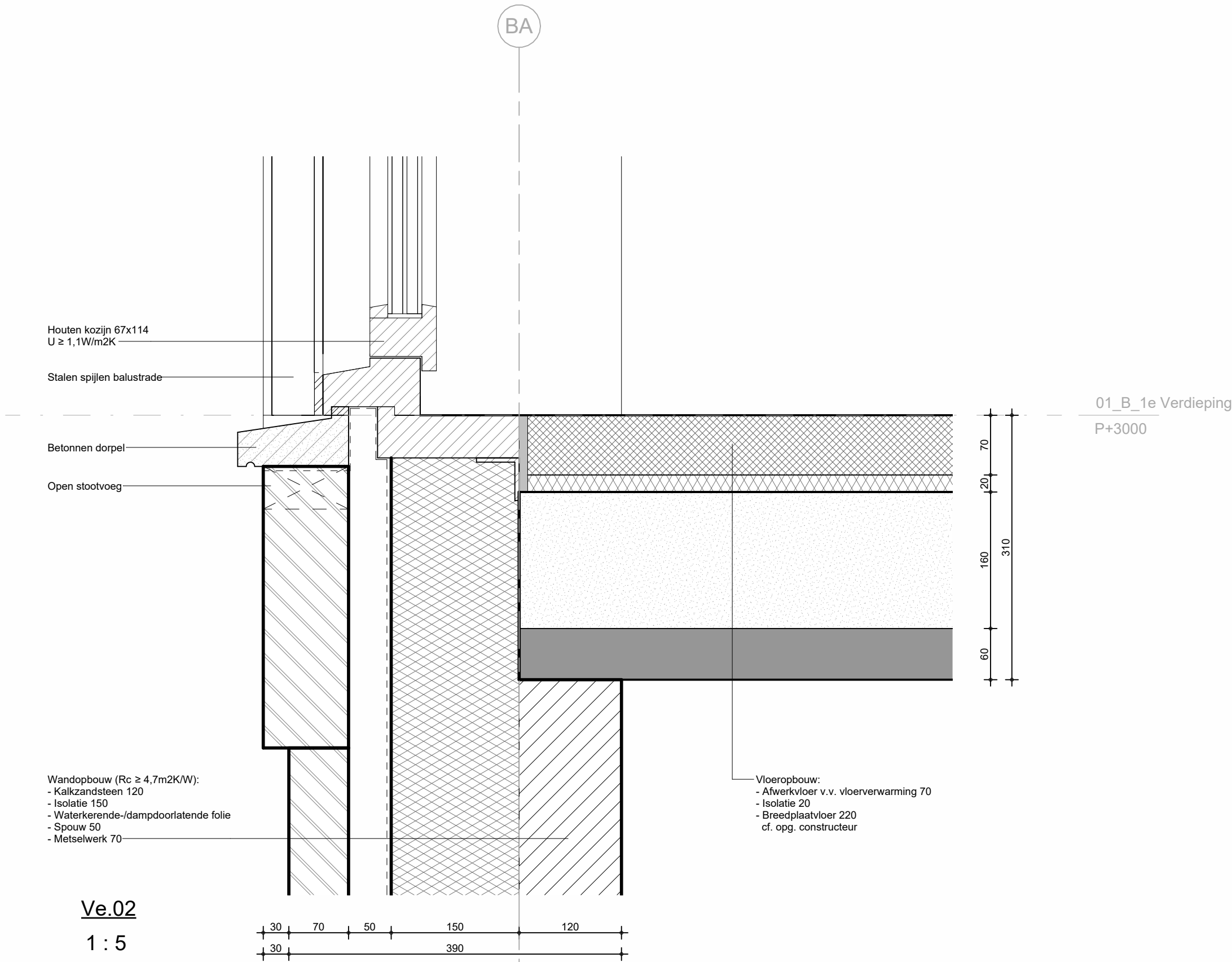




Gevelfragment A
1 : 50

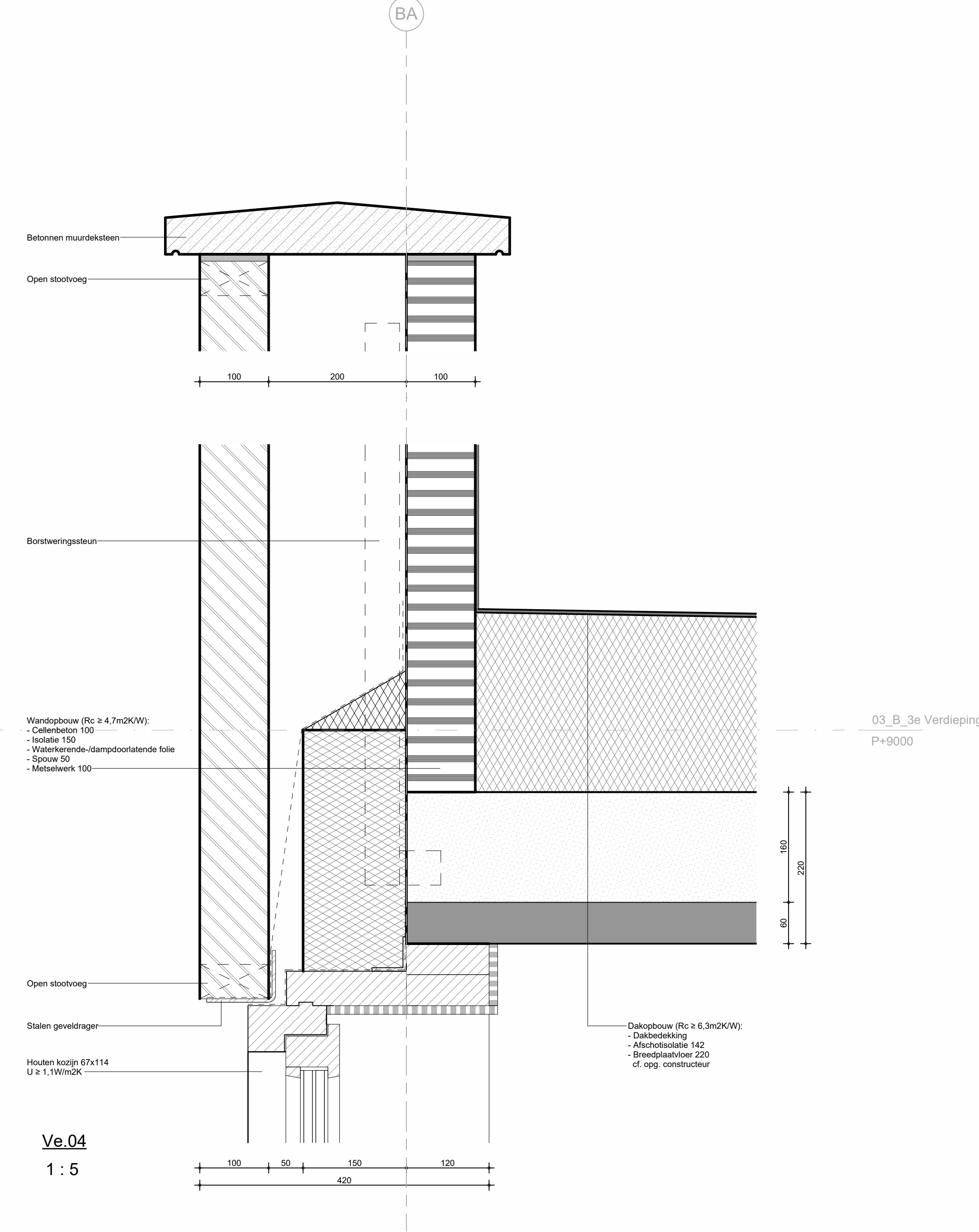


Doorsnede A
1 : 50



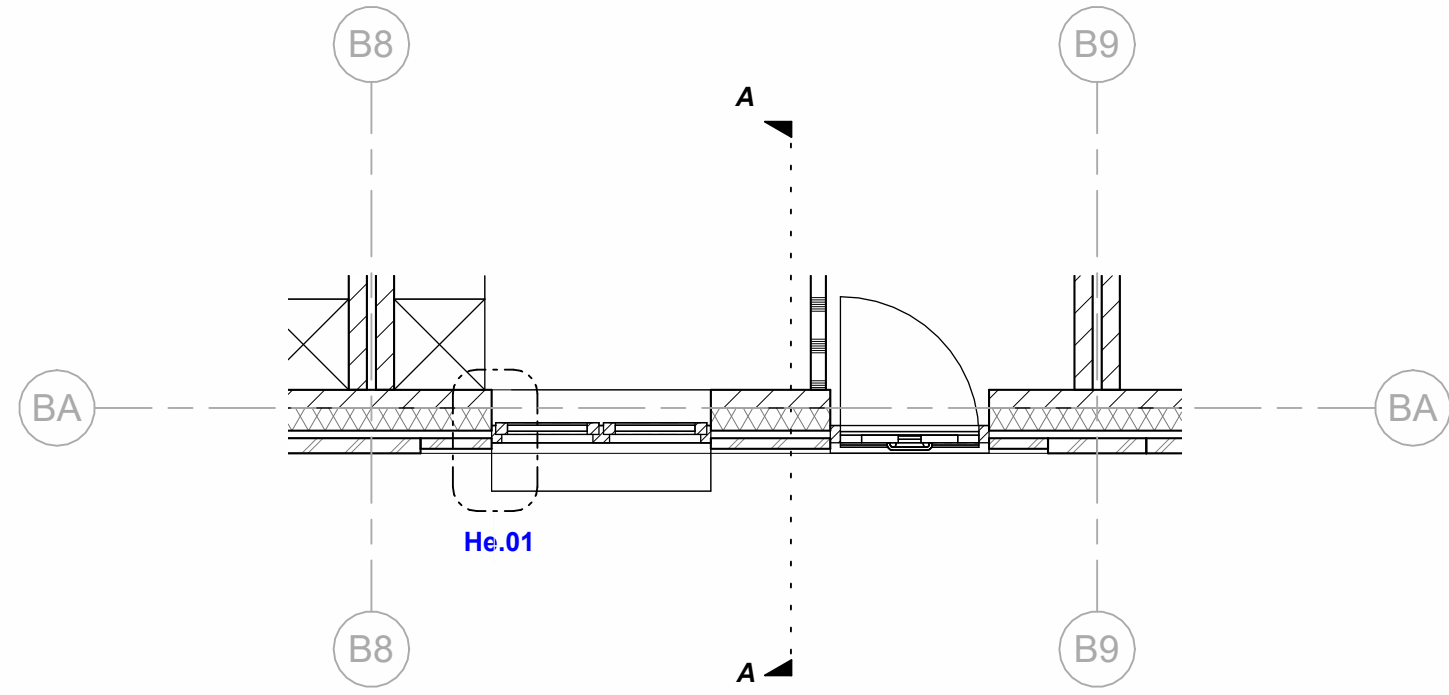
Ve.02

1 : 5

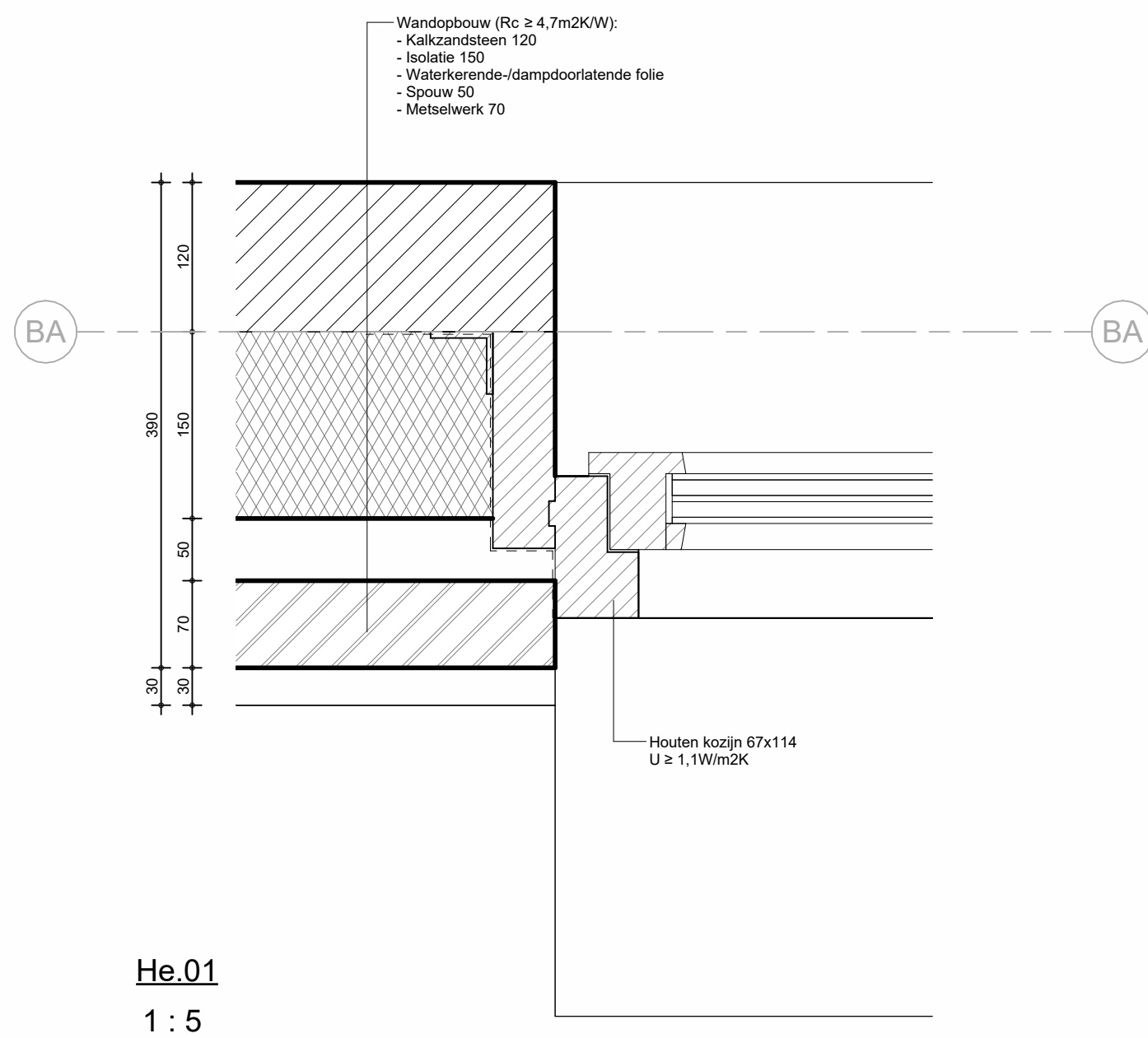


Ve.04

1 : 5

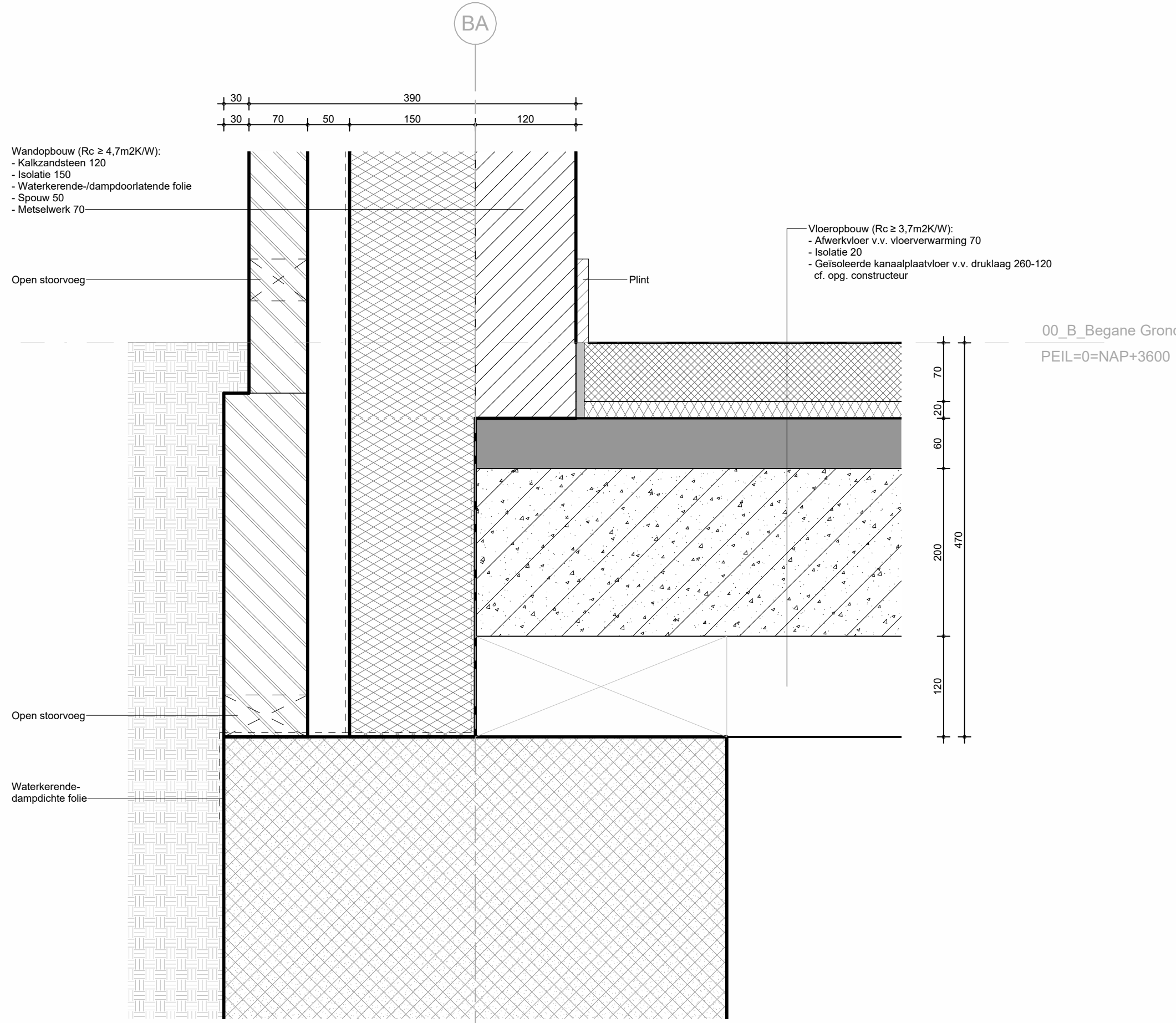


Plattegrond
1 : 50



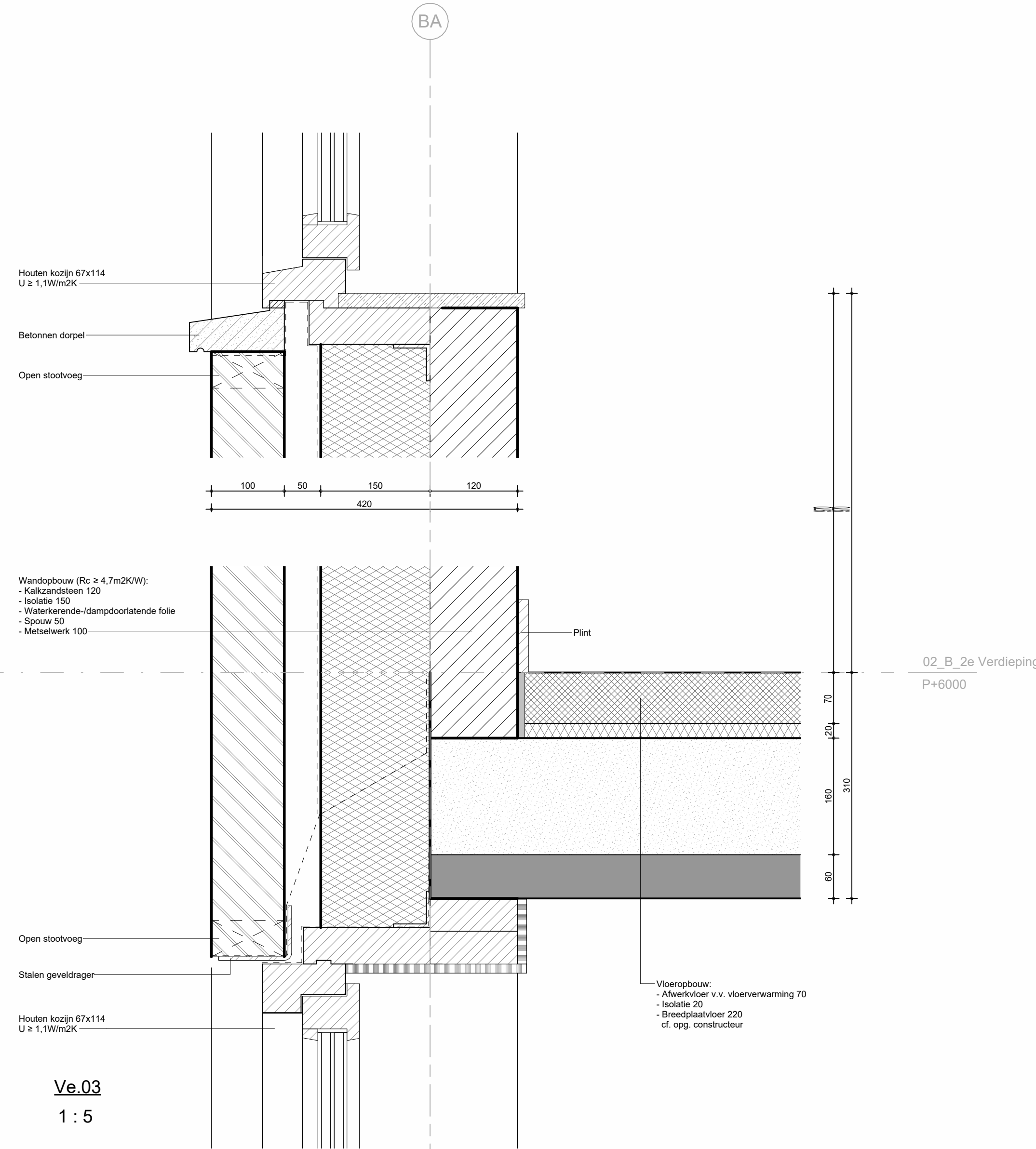
He.01

1 : 5



Ve.01

1 : 5



Ve.03

1 : 5

ARCHITECTENAANDEMAAS

Wim Oudejans 41.1
Wim Oudejans 41.1
Wim Oudejans 41.1
Wim Oudejans 41.1

Projectontwerper: Roland van Buren
Projectontwerper: Twan Hermans
Projectontwerper: Tim Meertens
BIM Regisseur: -

De Haven Spijkenisse - Blok B
Veerweg
Dorus Vastgoedontwikkeling
Tolweg 6a
3741 LK Baarn
DEFINITIEF ONTWERP
Details
Gevelfragment A

2023-12-19	TM
1:5 / 1:50	AOL
678010	
DO B 4 -- A	