

Uitgangspunten Principe details

- 1.00 - 1.xx Principe details funderings
- 2.00 - 2.xx Principe details gevel
- 3.00 - 3.xx Principe details dak
- 4.00 - 4.xx Principe details binnen
- 5.00 - 5.xx Principe details horizontaal
- 6.00 - 6.xx Principe details tuinmuur en berging

Uitgangspunten Rc-waarden

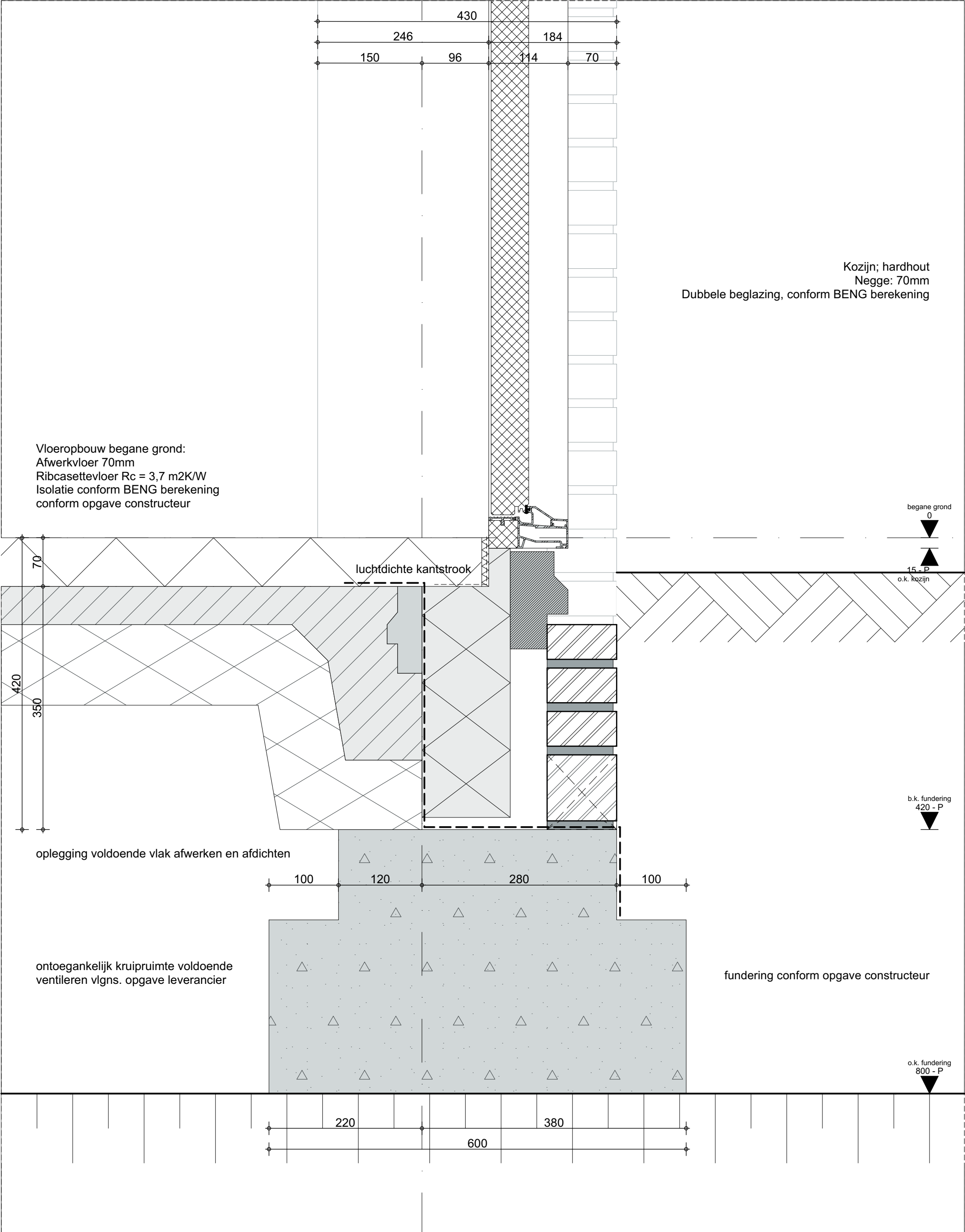
Vloer 3,7 m².K/W
Wand 4,7 m².K/W
Dak 6,3 m².K/W

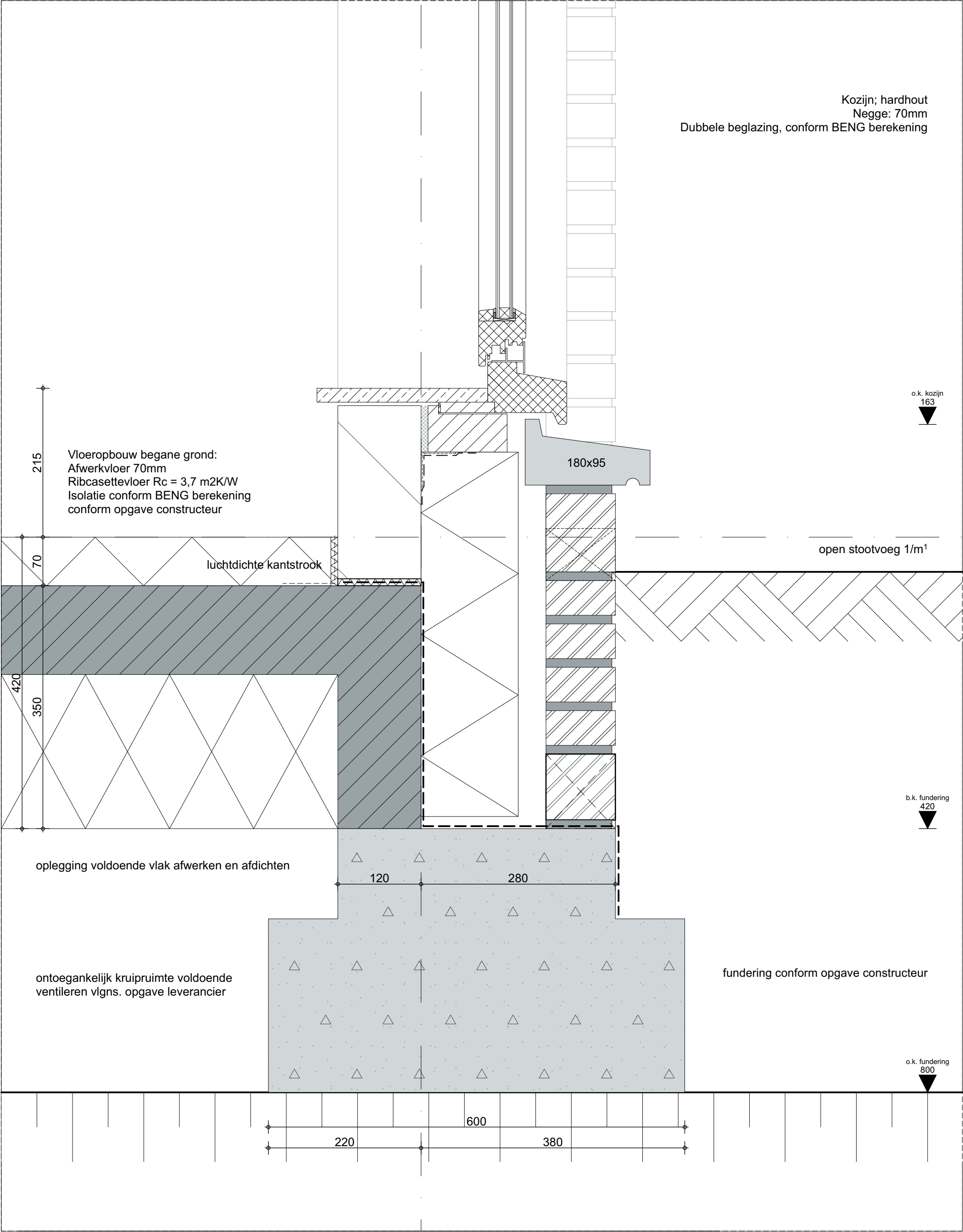


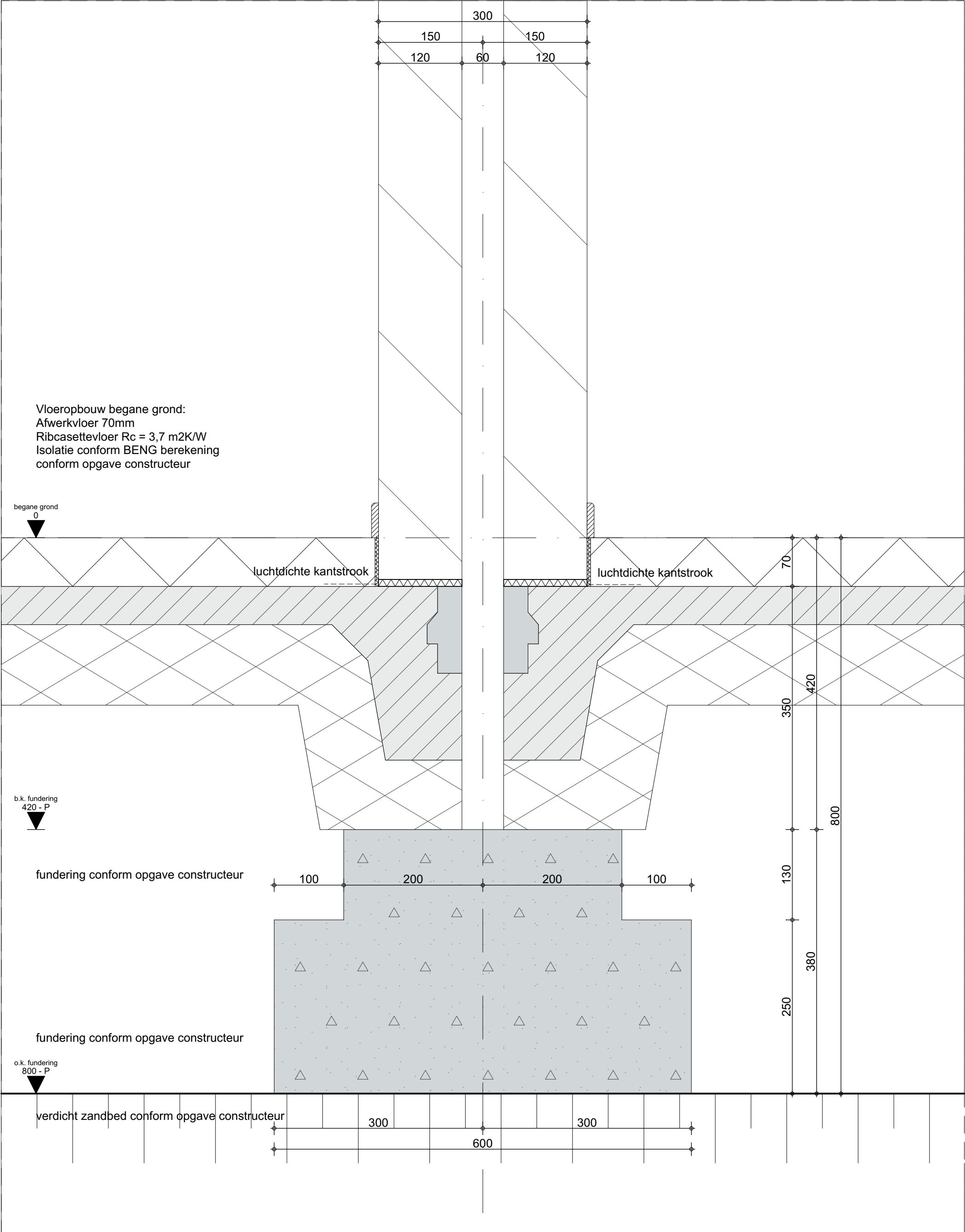
VFO Architects | Urban design bv

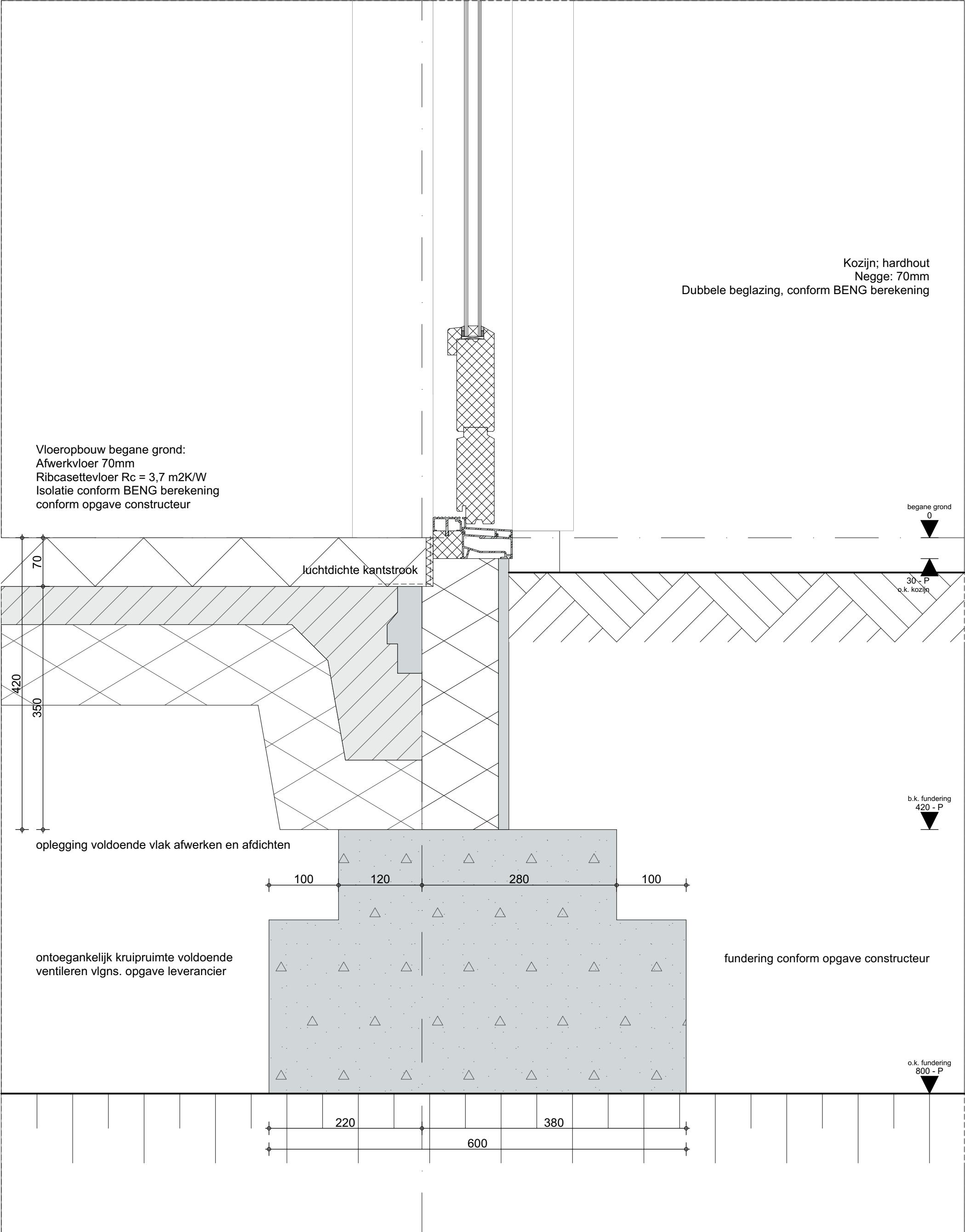
For architectural design
Interior | product design
Urbanism and planning
Architectural advisory

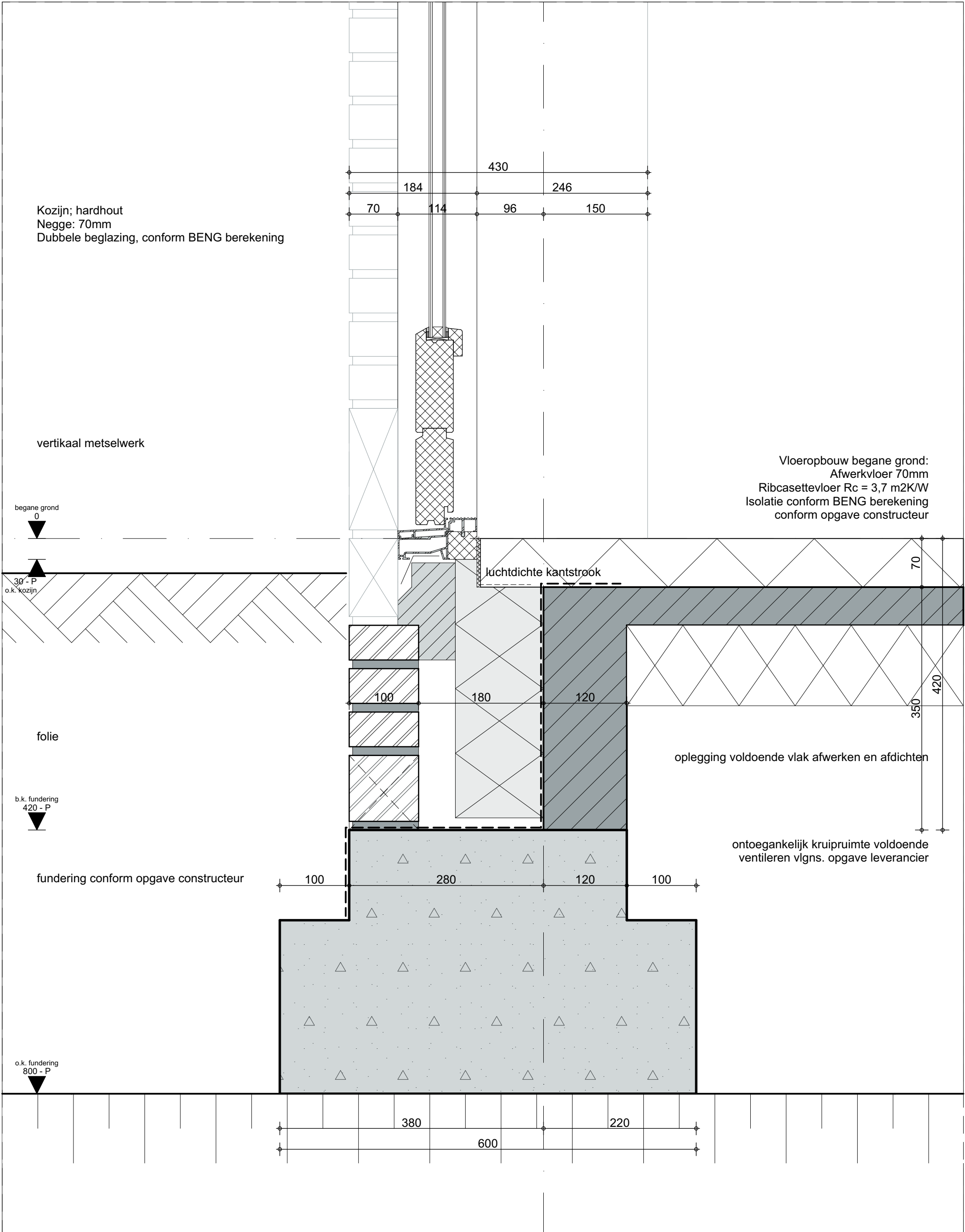
Werknummer:	2021311.1
Project:	47 woningen Abdijlaan Helmond
Opdrachtgever:	Nieuw Binderen Bv
adres: Croy 7L postcode: 5653 LC plaats: Eindhoven telefoon: 06-20775390	
Tekeningnummer:	TO42
Onderdeel:	Principe details Blok FG
Fase:	TECHNISCH ONTWERP
Status:	WABO
Schaal:	
Opmerking:	
Datum:	dinsdag 18 juni 2024

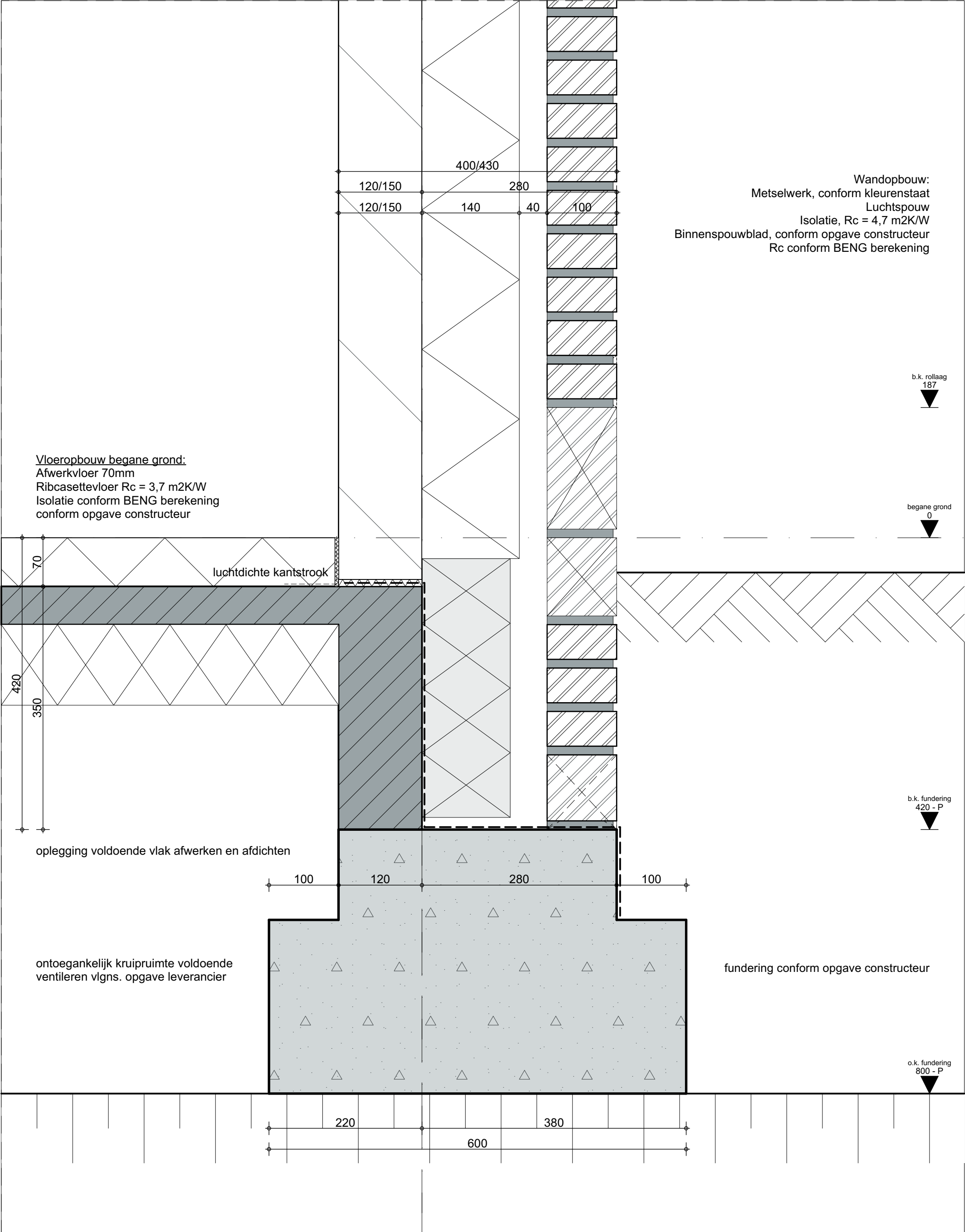


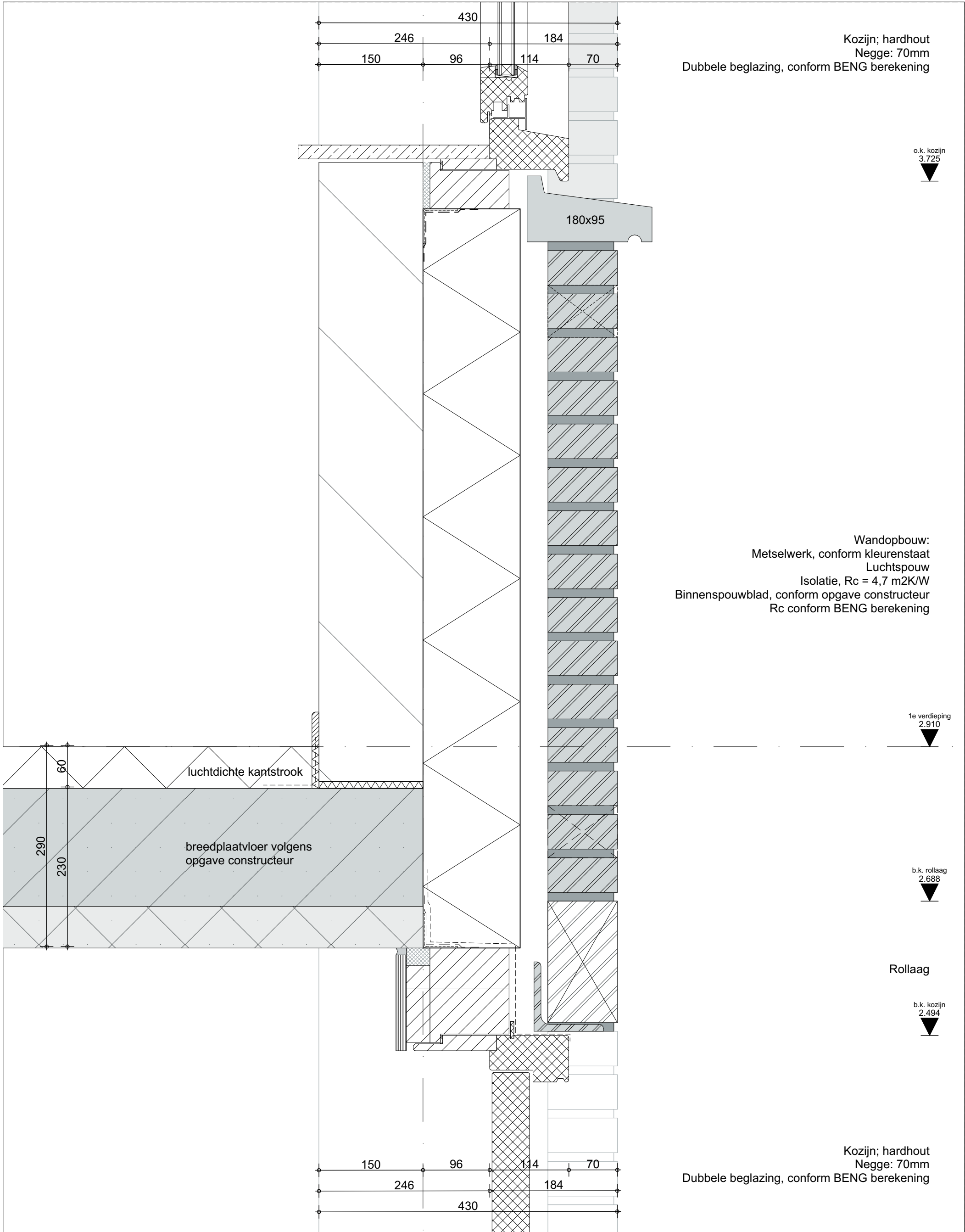












VFO ARCHITECTS | URBAN DESIGN BV

Grote Berg 18D | 5611 KK Eindhoven | T (040) 250 77 00 | info@vfo-arch.nl | www.vfo-arch.nl

Werknummer: 2021311.1

Teknr.: TO42

Detail:

Project: 47 woningen Abdijlaan Helmond

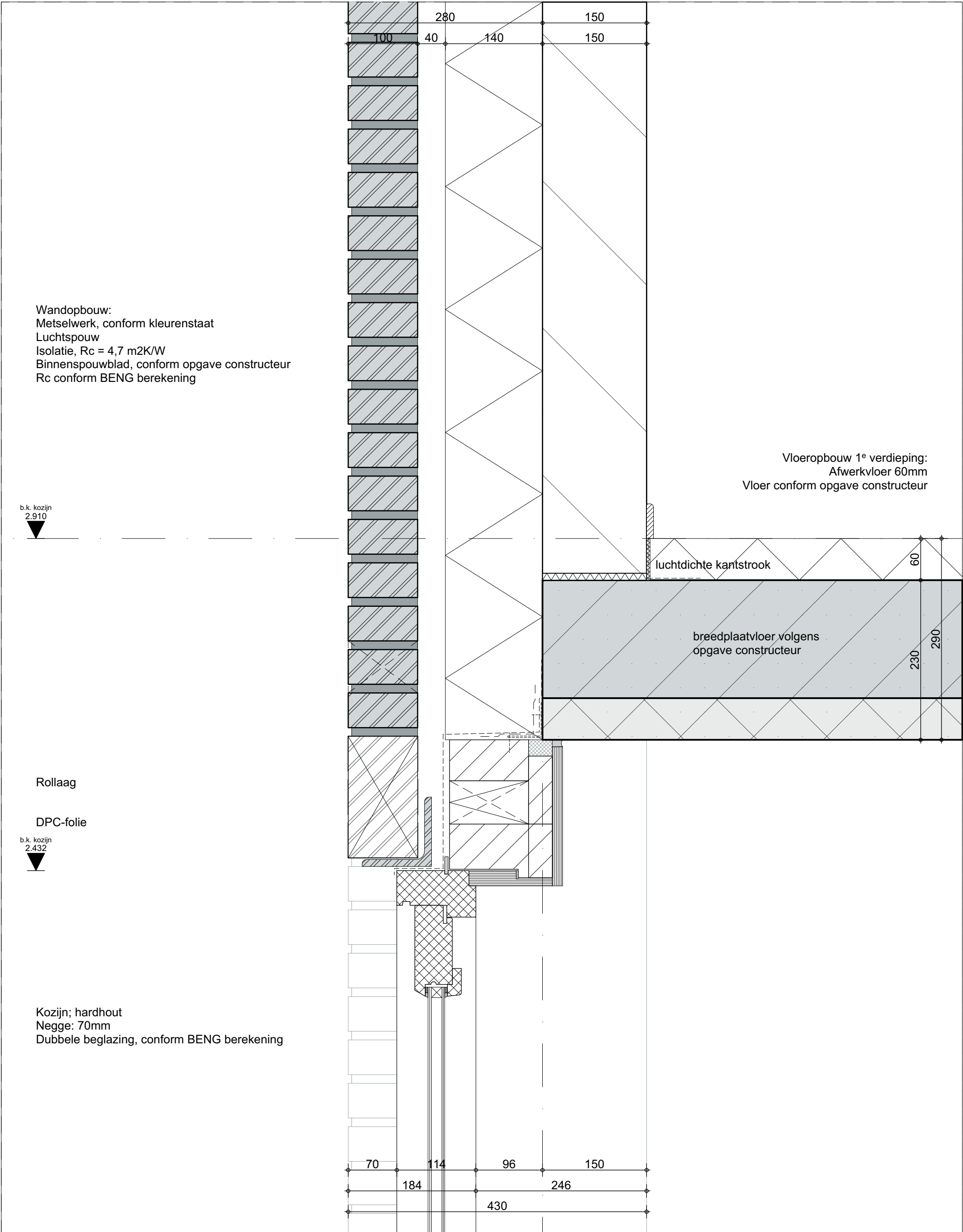
Schaal: 1:5

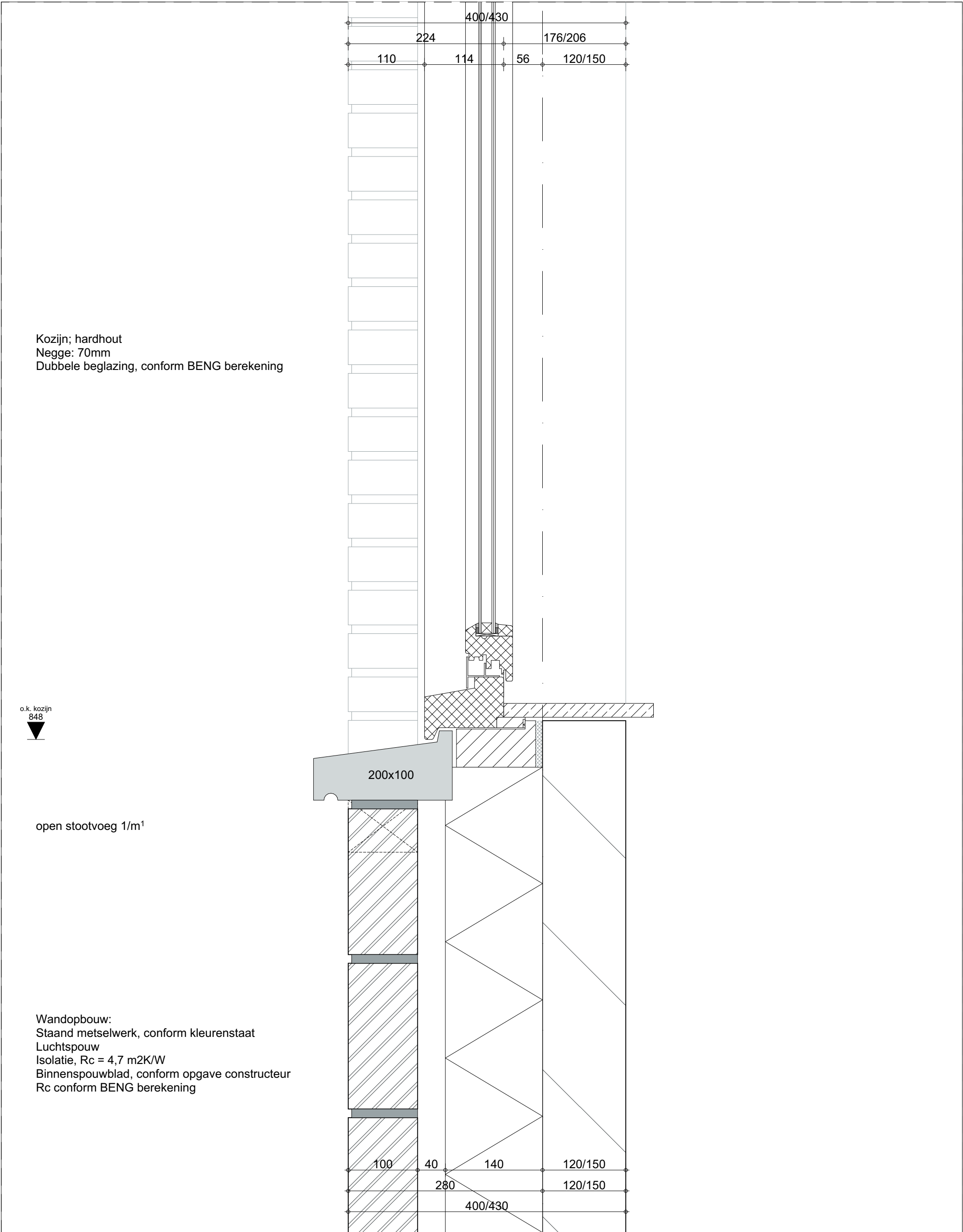
201

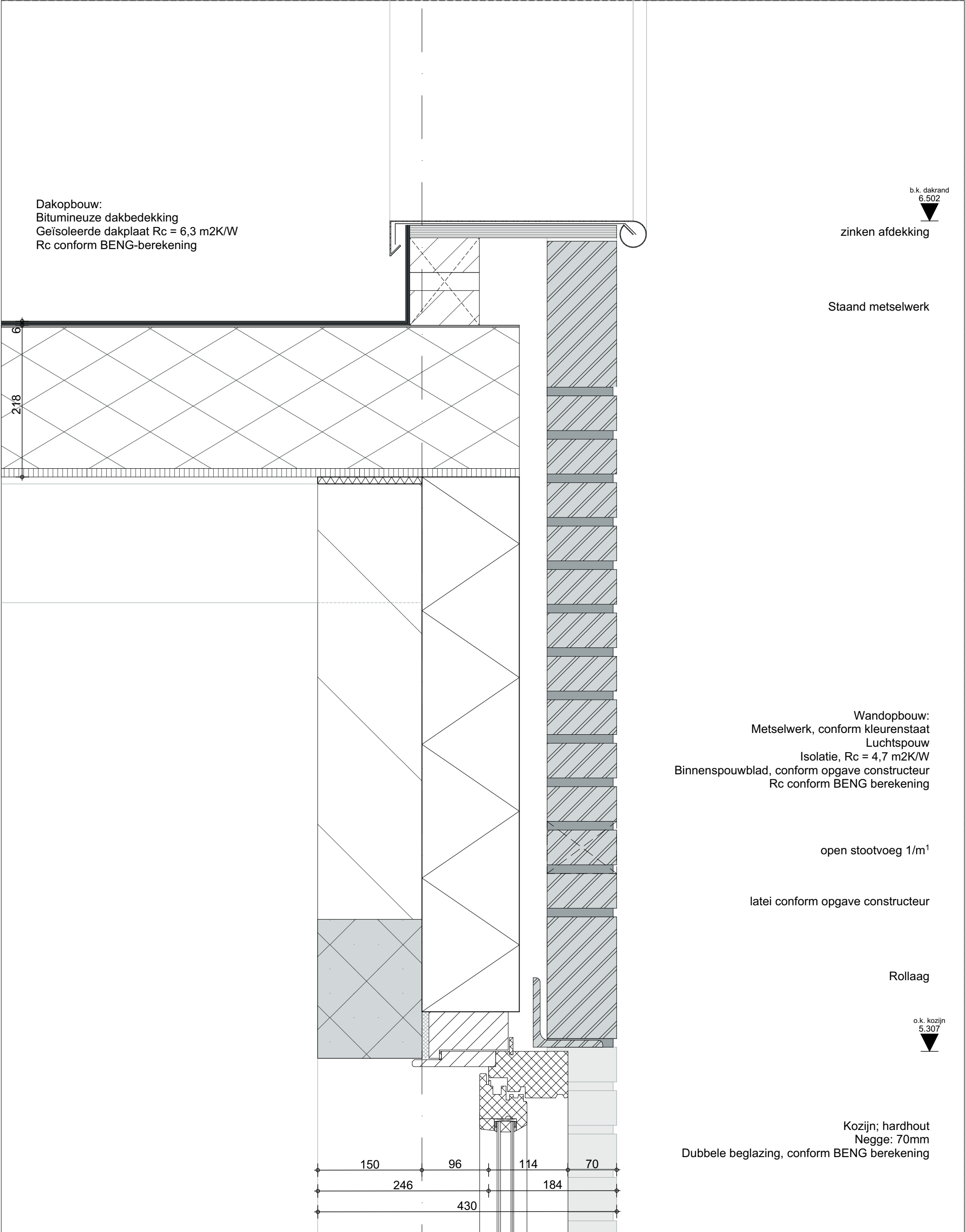
Datum:

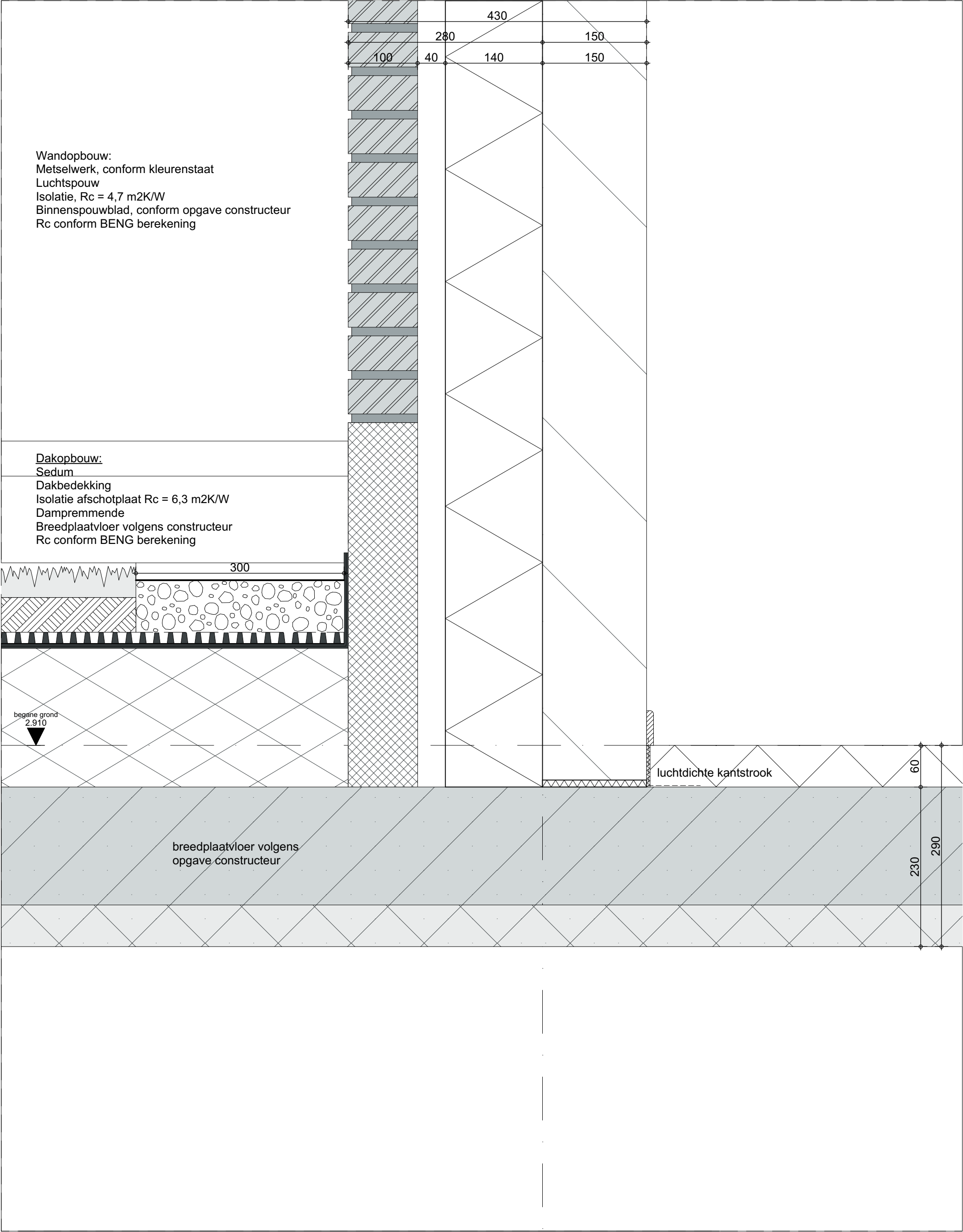
15-12-2023

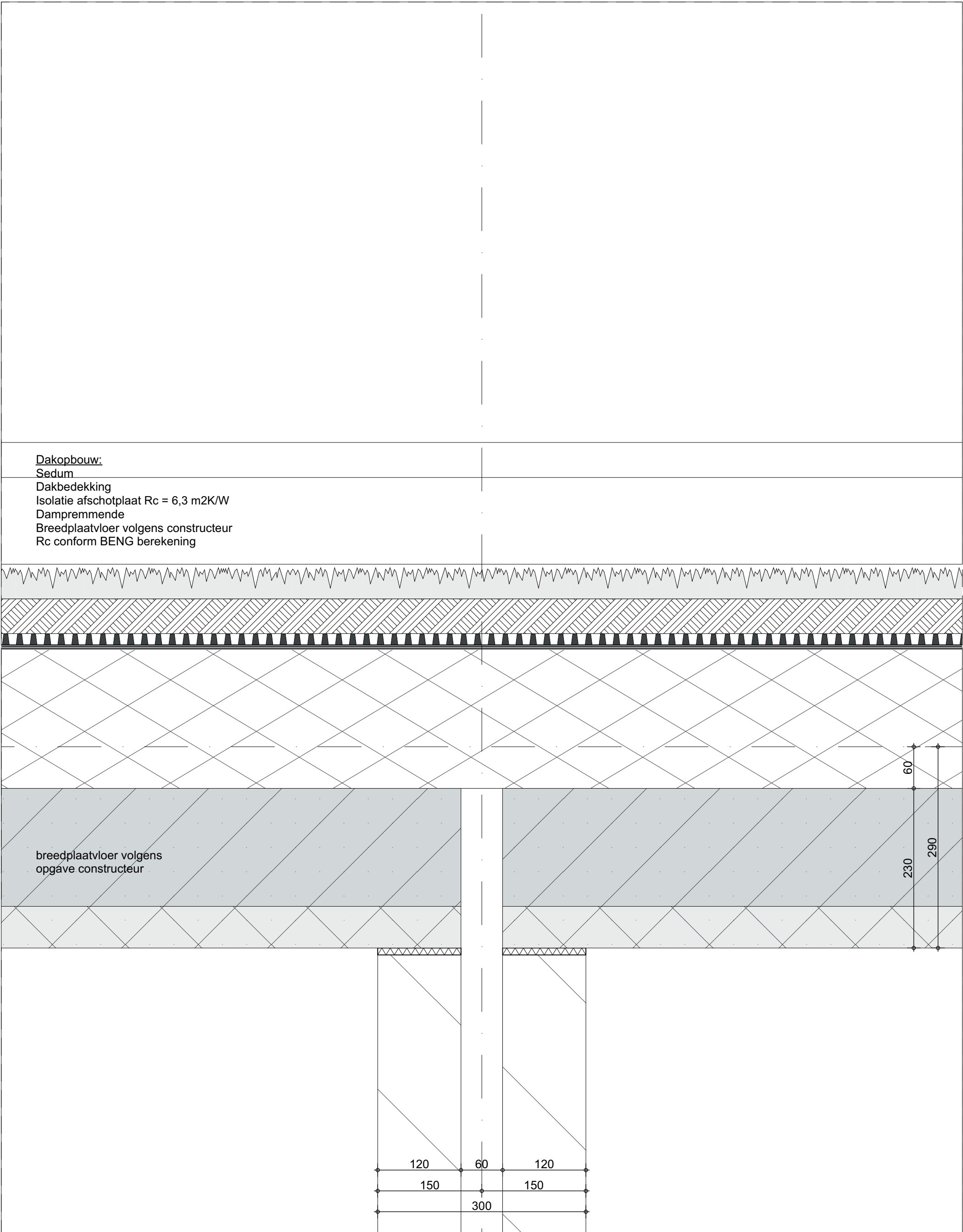
VFO

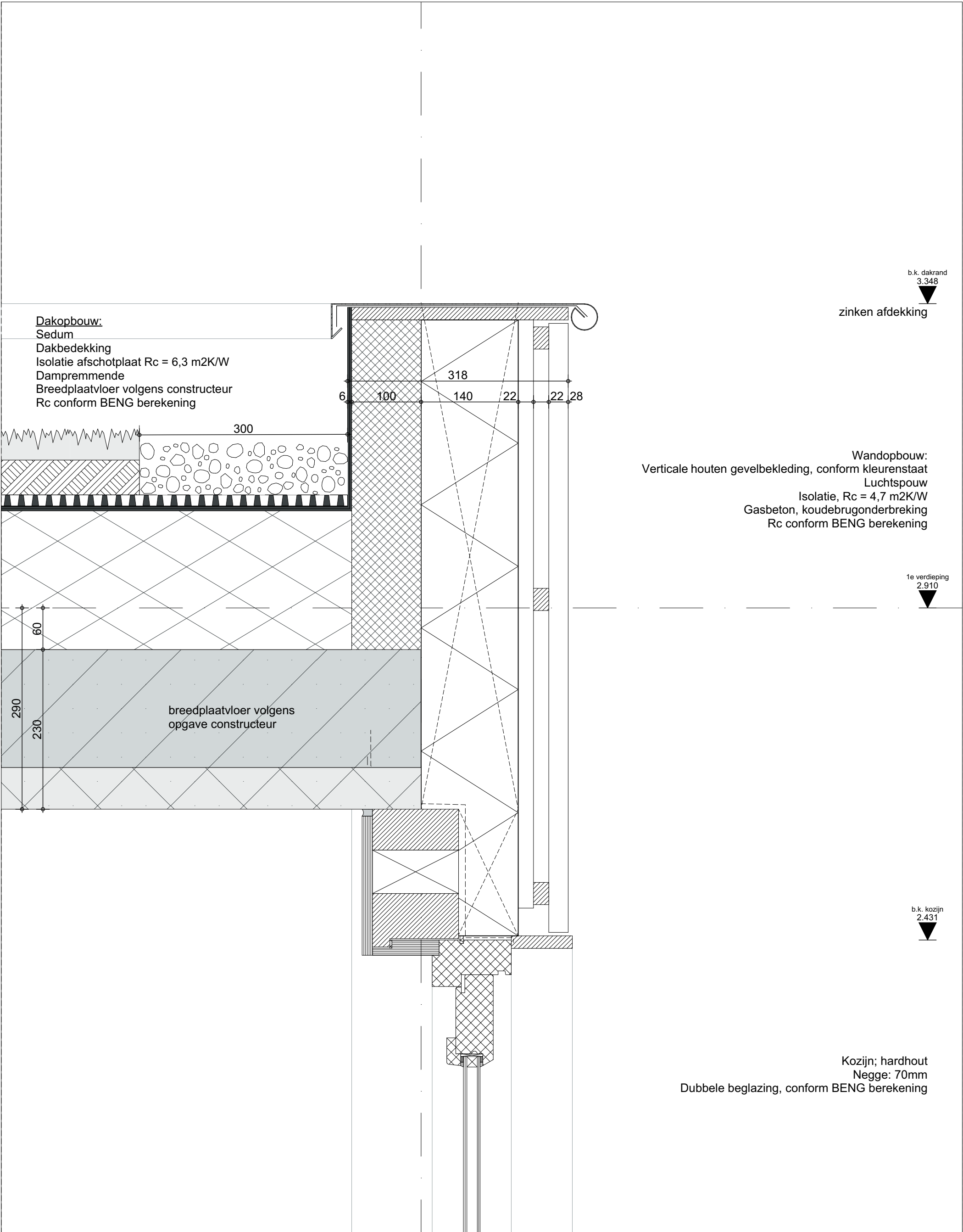


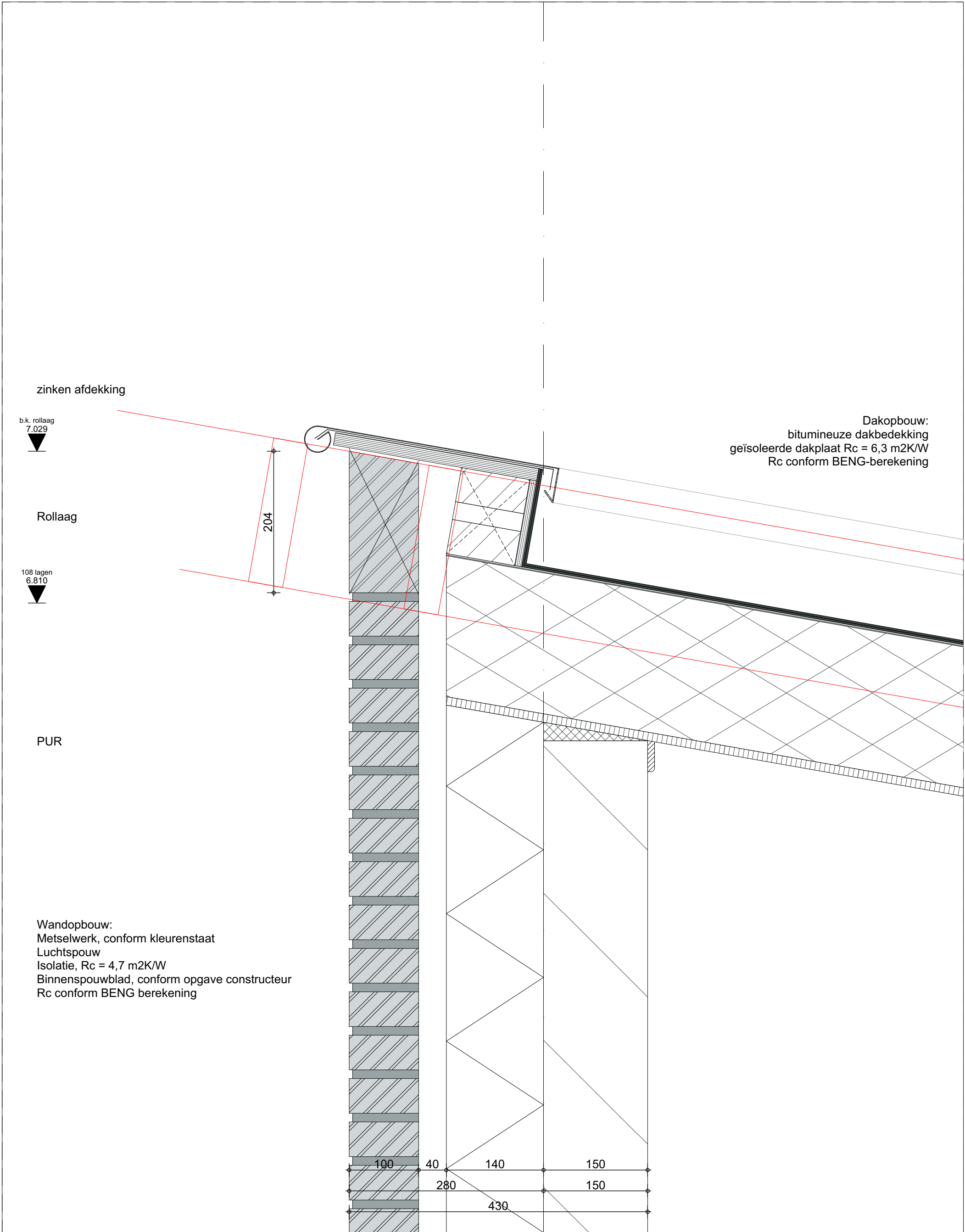


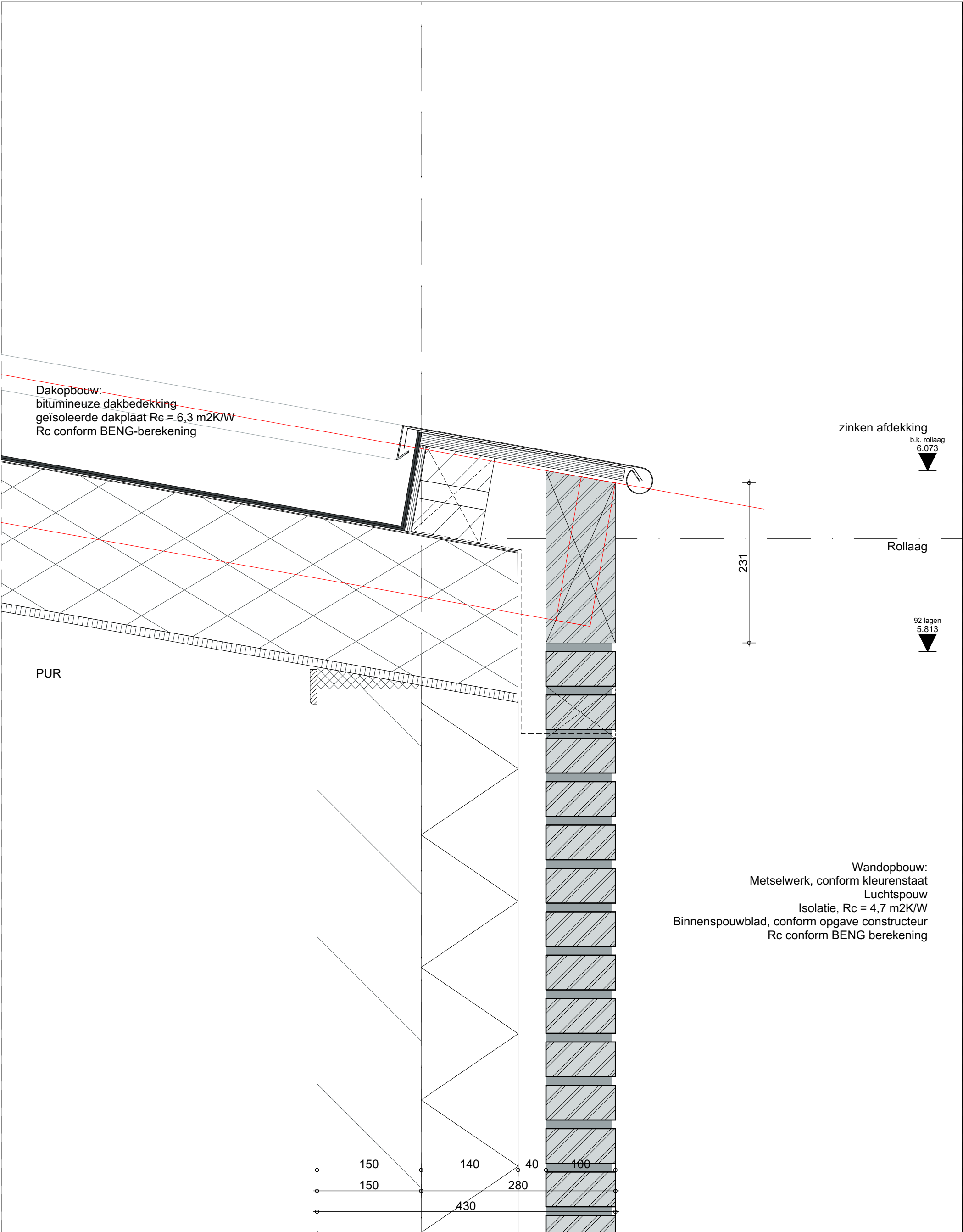


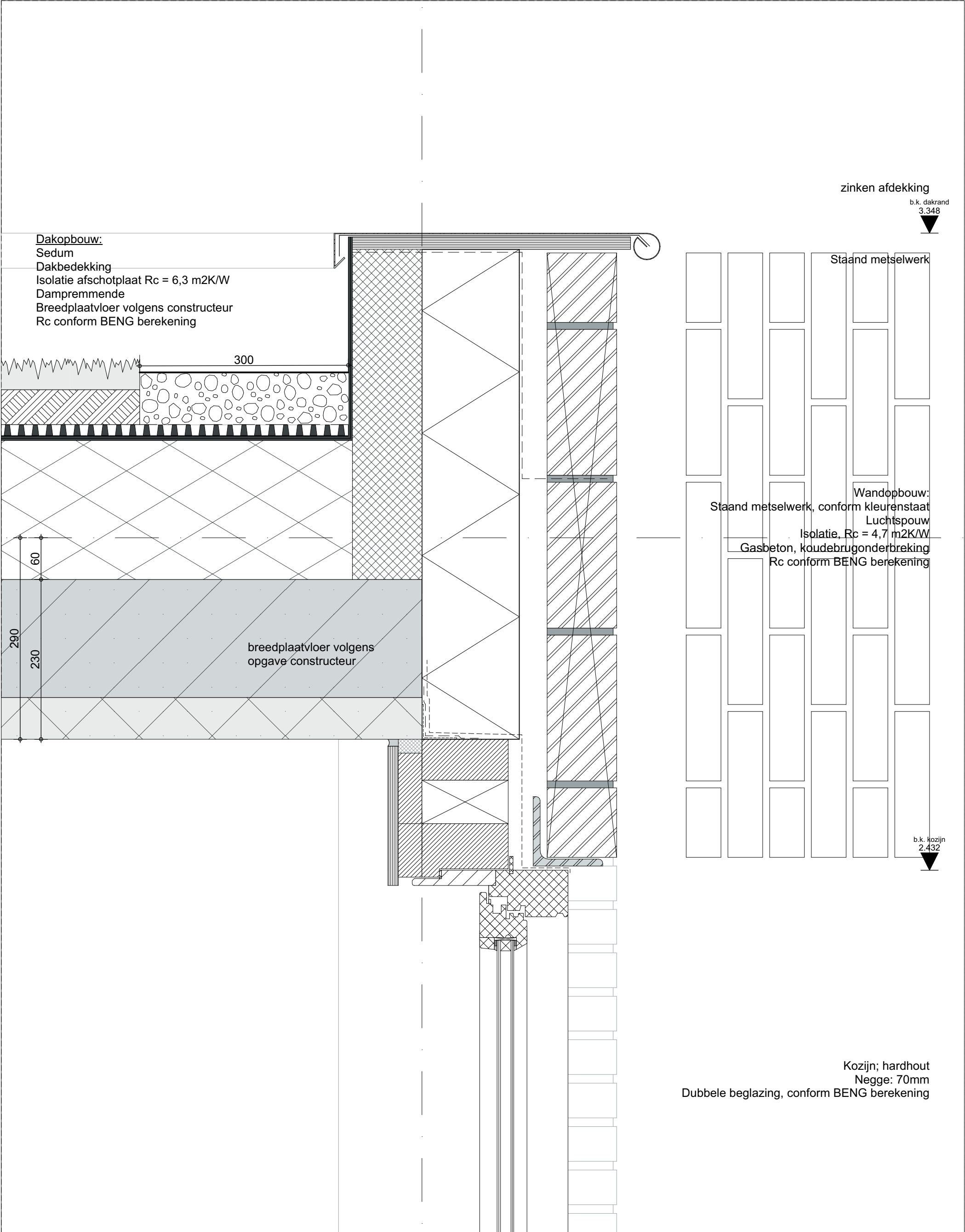


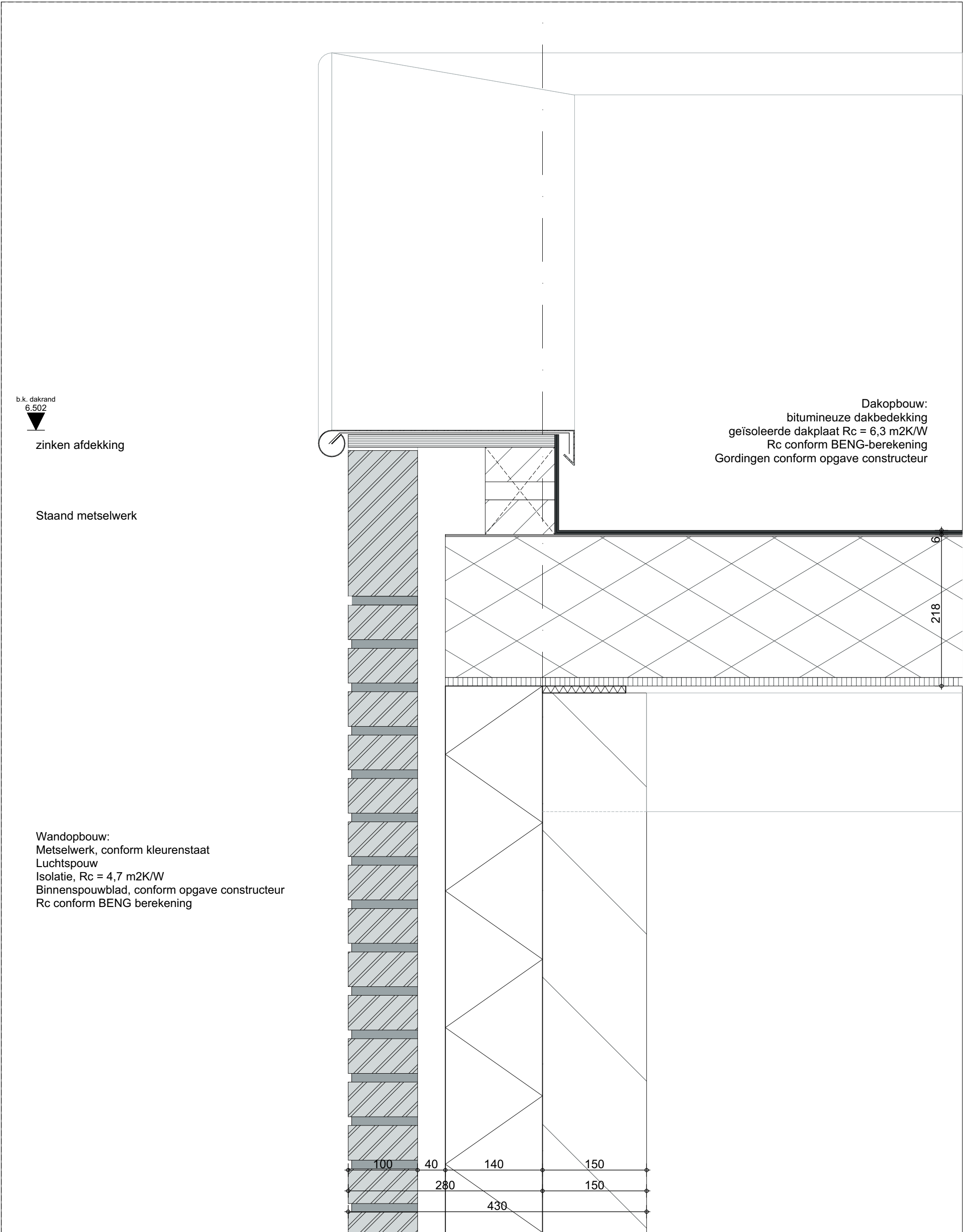


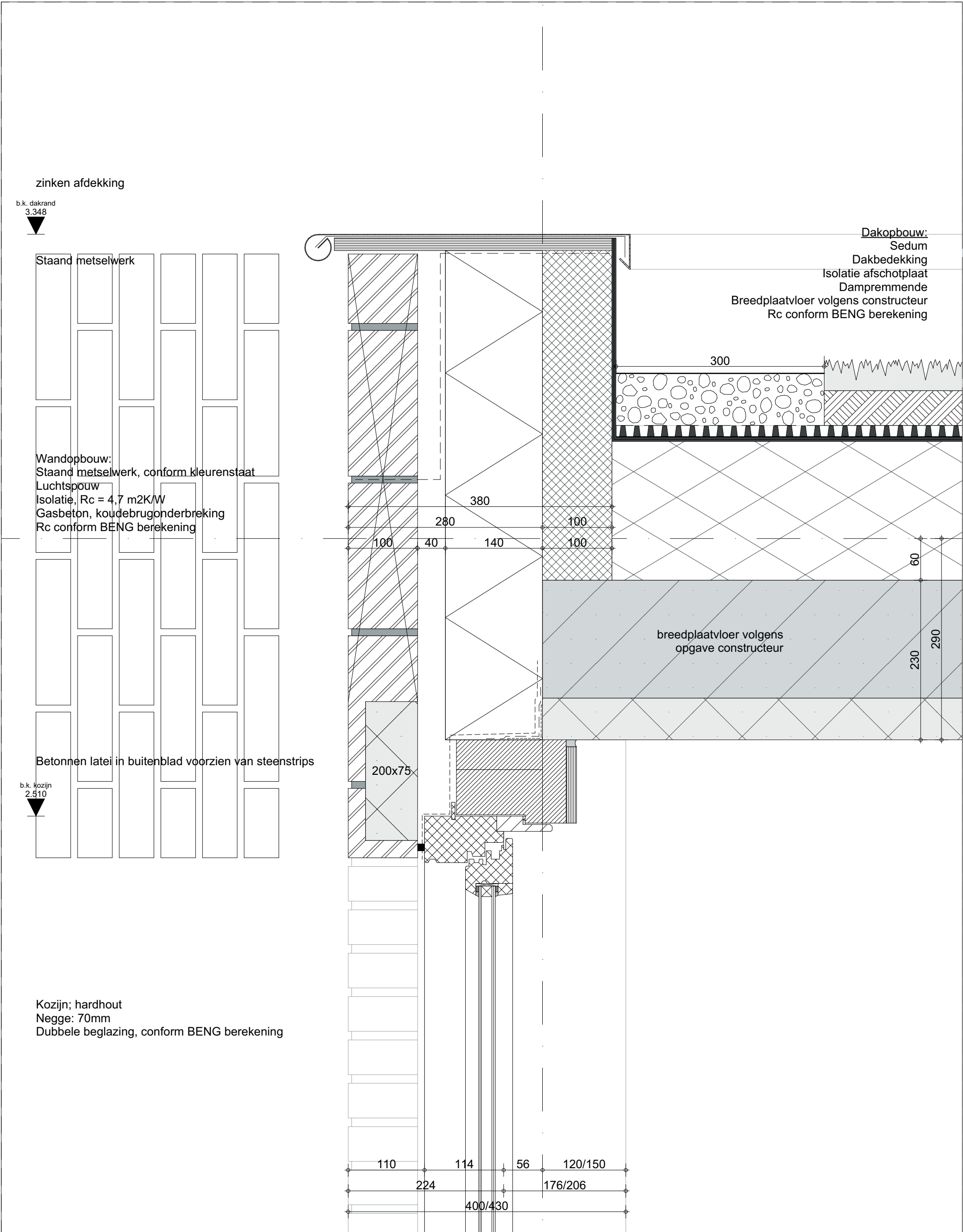






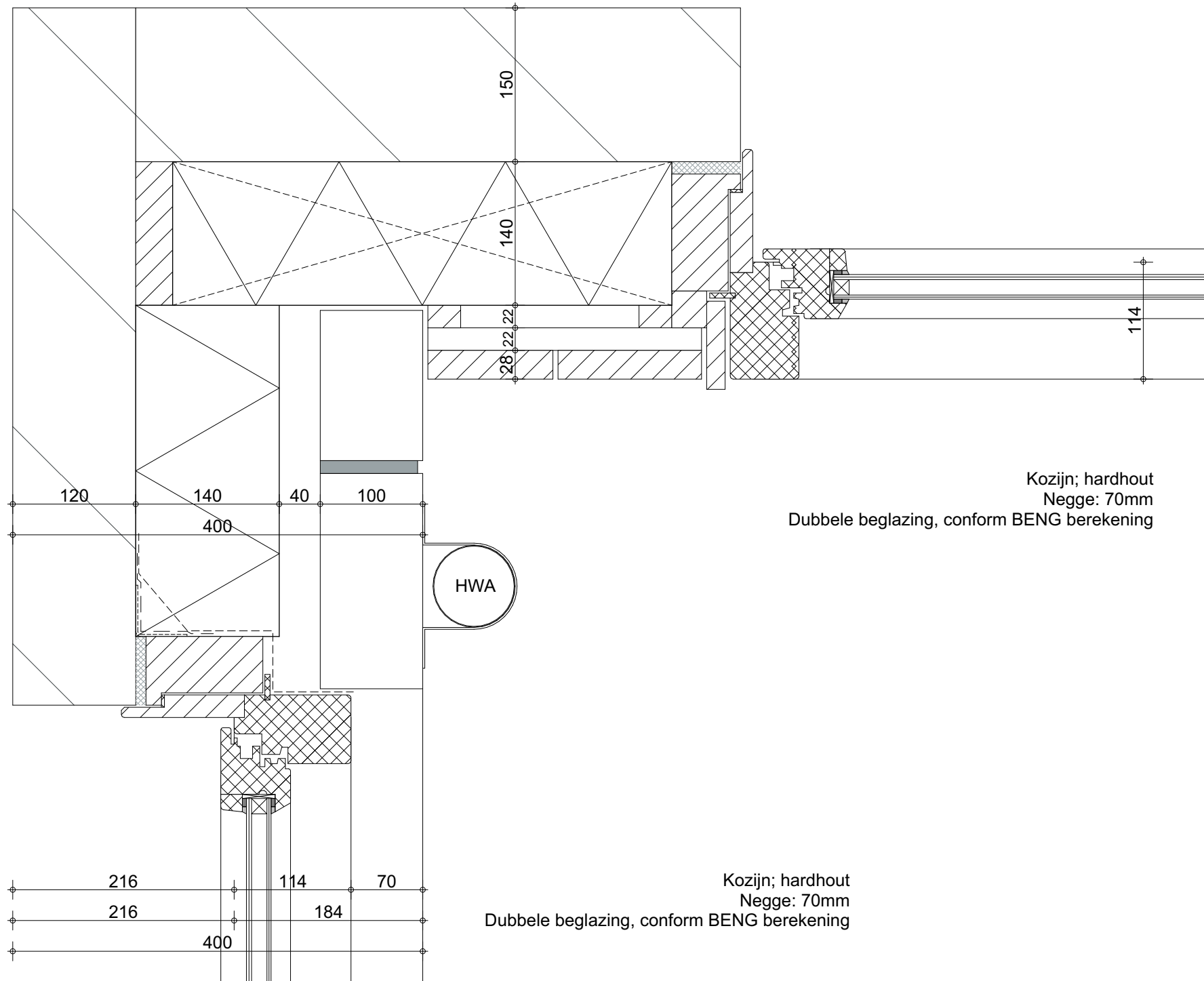






Wandopbouw:
Metselwerk, conform kleurenstaat
Luchtpouw
Isolatie, Rc = 4,7 m2K/W
Binnenspouwblad, conform opgave constructeur
Rc conform BENG berekening

Wandopbouw:
Gipskarton
Multiplex
HSB, conform opgave constructeur
Gevuld met isolatie, Rc = 4,7 m2K/W
Geventileerd verticaal en horizontaal regelwerk
Verticale houten gevelbekleding
Rc conform BENG berekening



VFO ARCHITECTS | URBAN DESIGN BV

Grote Berg 18D | 5611 KK Eindhoven | T (040) 250 77 00 | info@vfo-arch.nl | www.vfo-arch.nl

Werknummer: **2021311.1**

Project: **47 woningen Abdijlaan Helmond**

Teknr.: **TO42**

Schaal: **1:5**

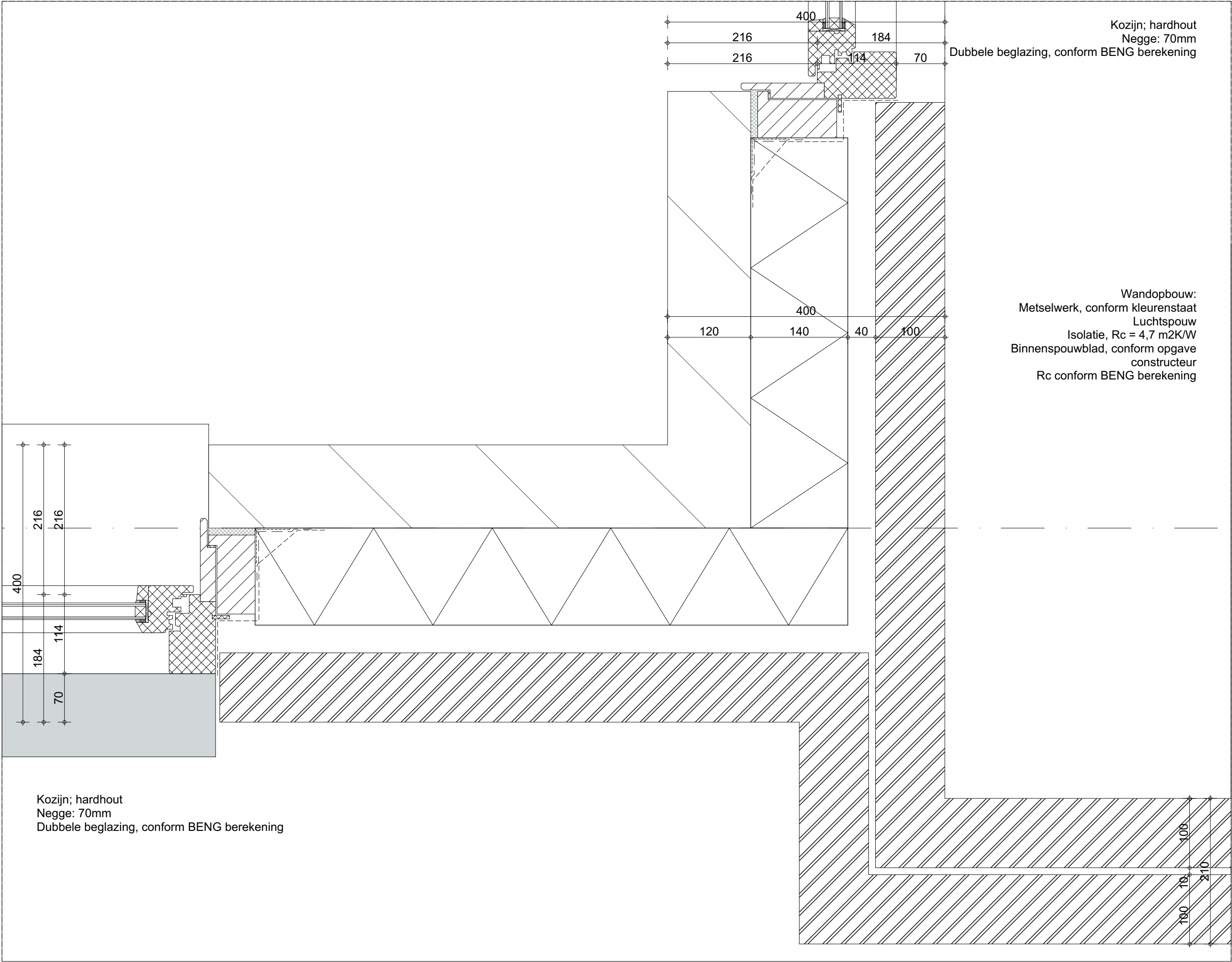
Detail:

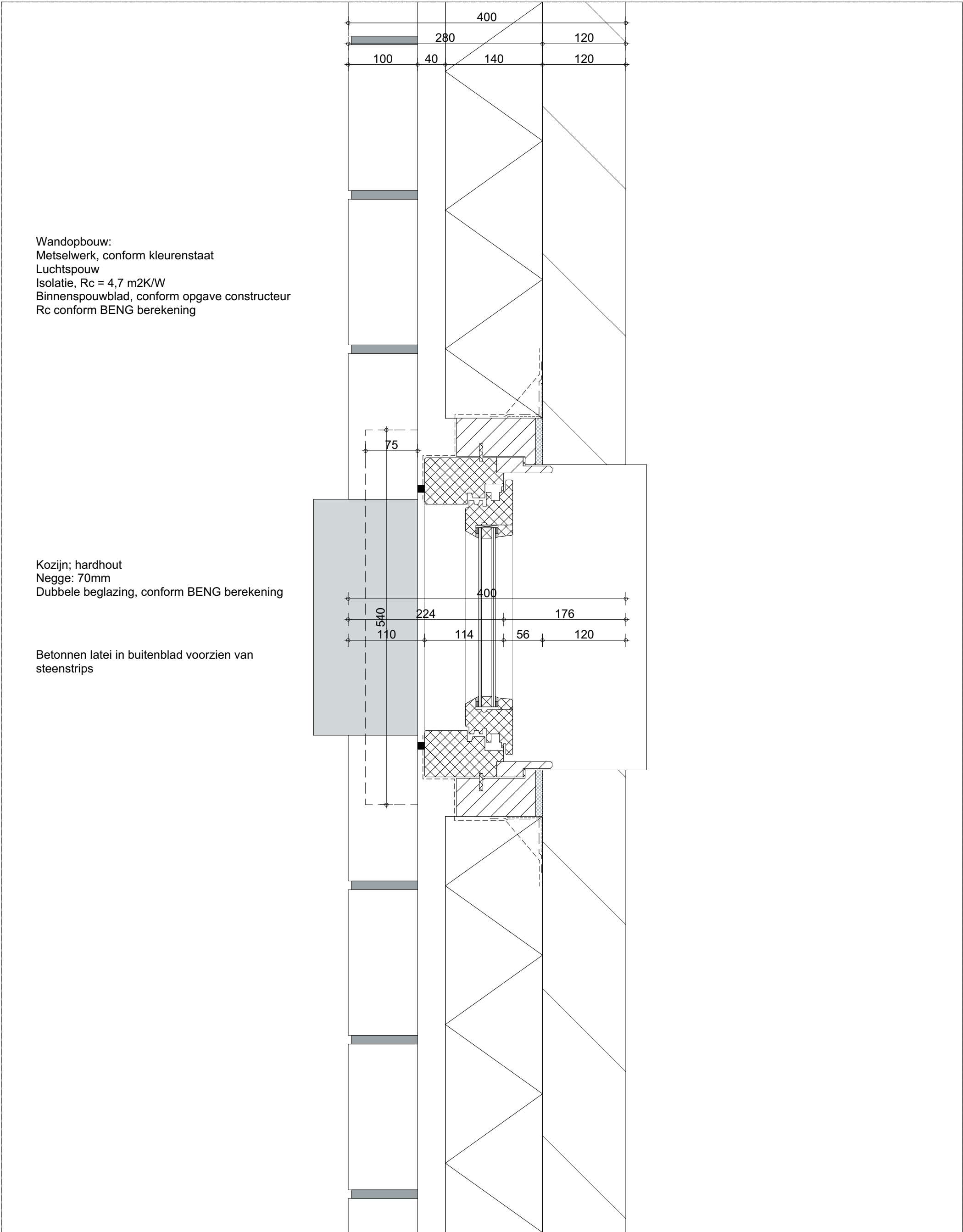
501

VFO

Datum:

15-12-2023





Wandopbouw:
Metselwerk, conform kleurenstaat
Luchtspouw
Isolatie, Rc = 4,7 m2K/W
Binnenspouwblad, conform opgave constructeur
Rc conform BENG berekening

Kozijn; hardhout
Negge: 70mm
Dubbele beglazing, conform BENG berekening

Betonnen latei in buitenblad voorzien van
steenstrips

