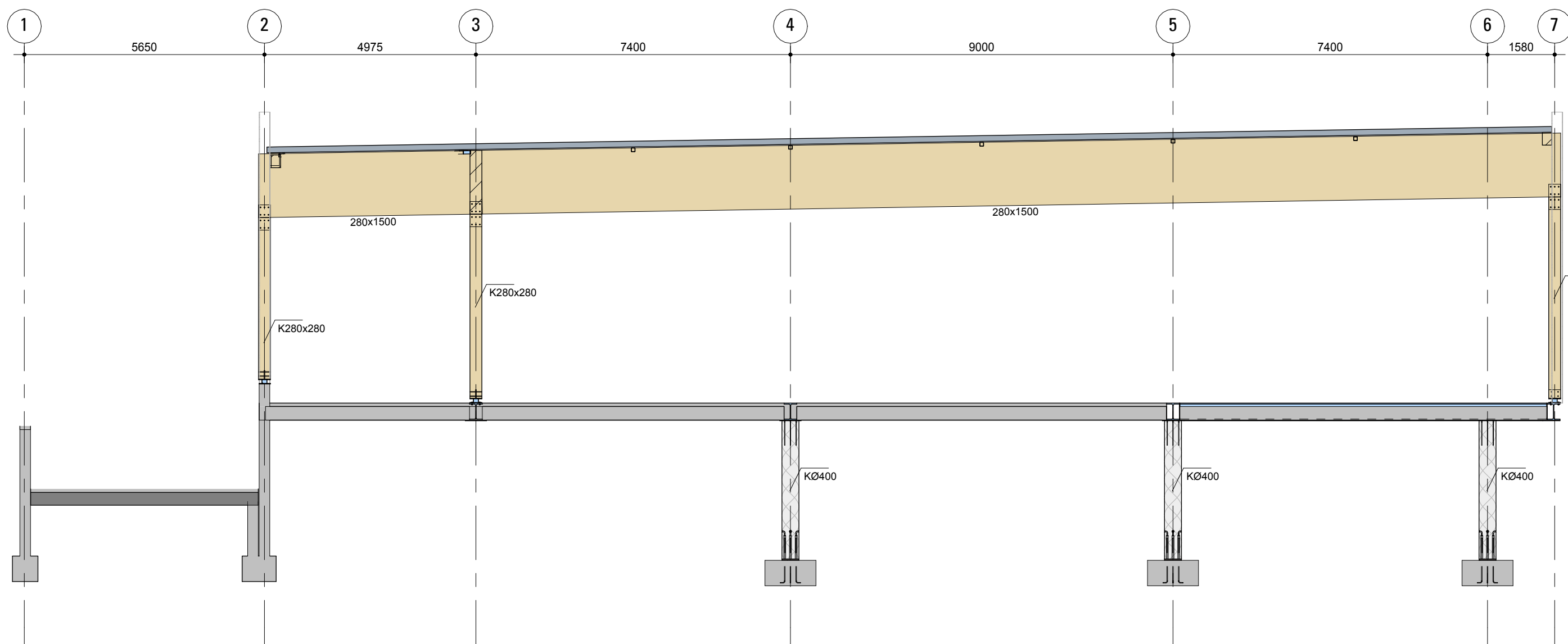
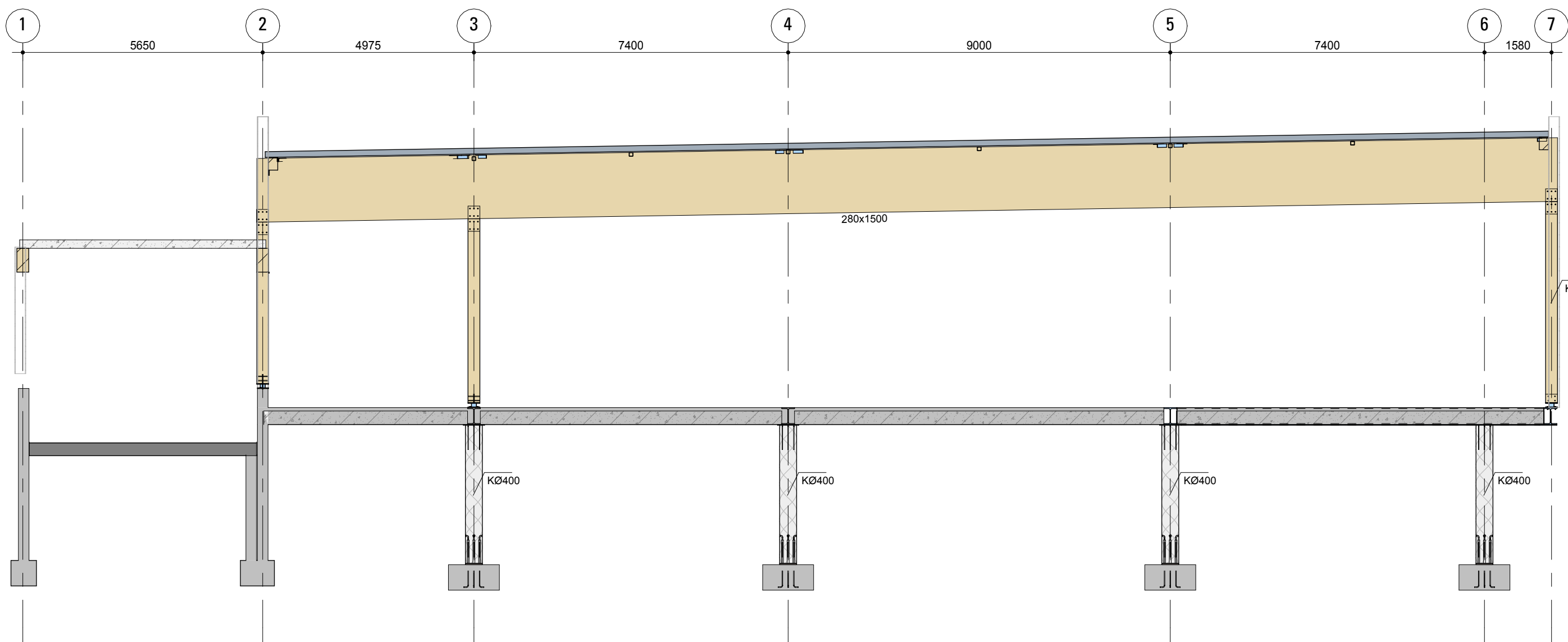


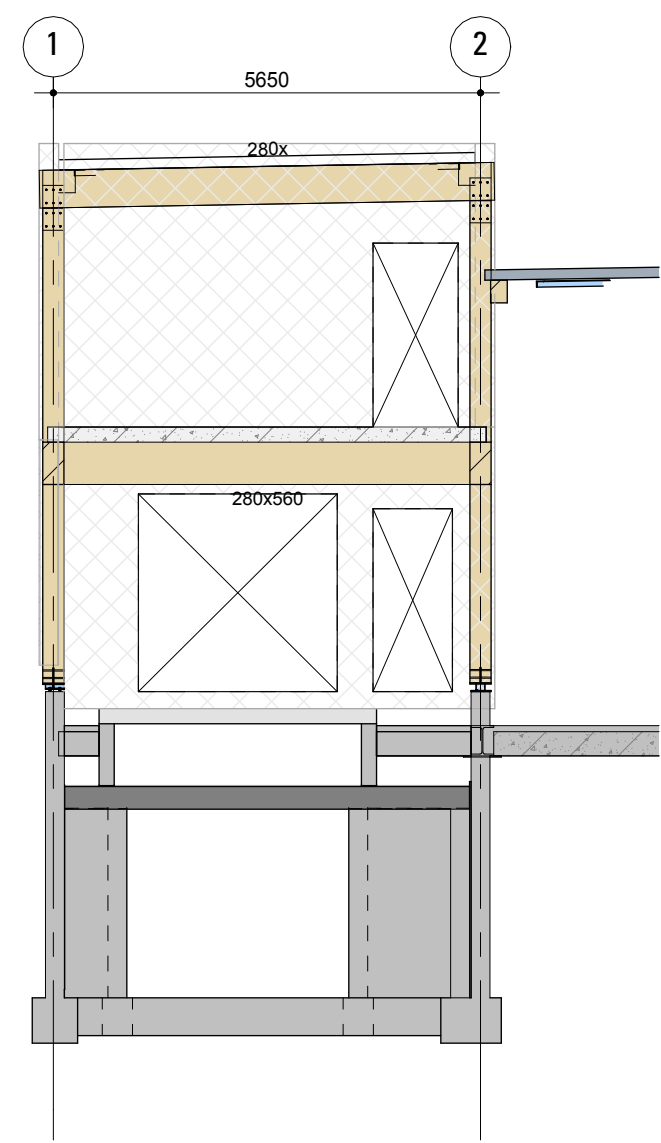
Detail K



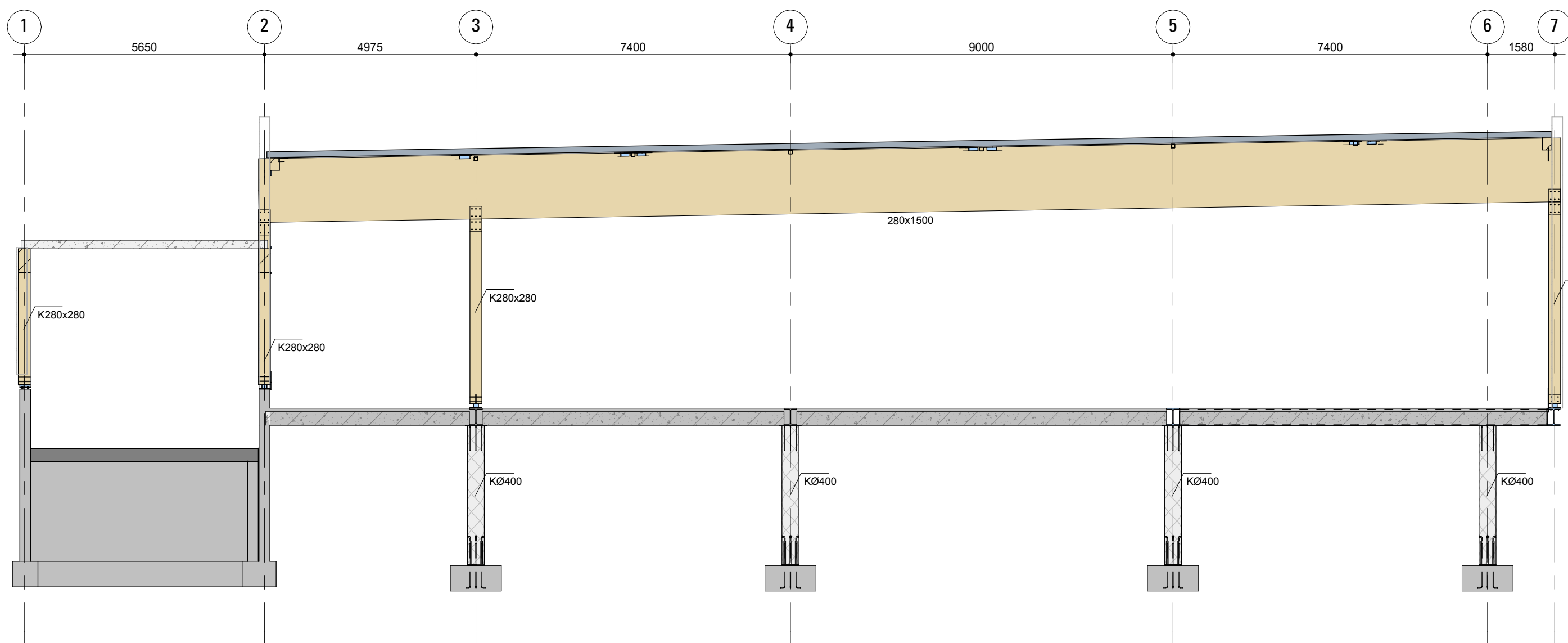
Detail L



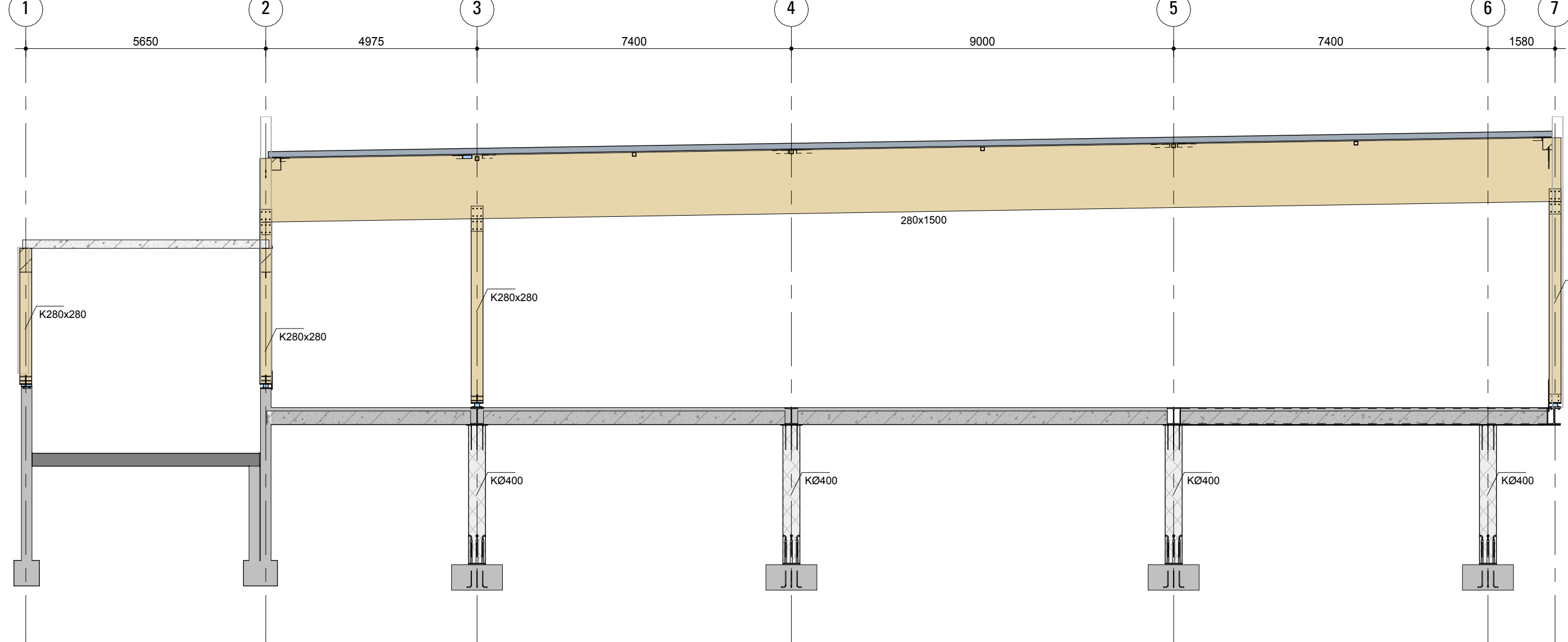
Detail H



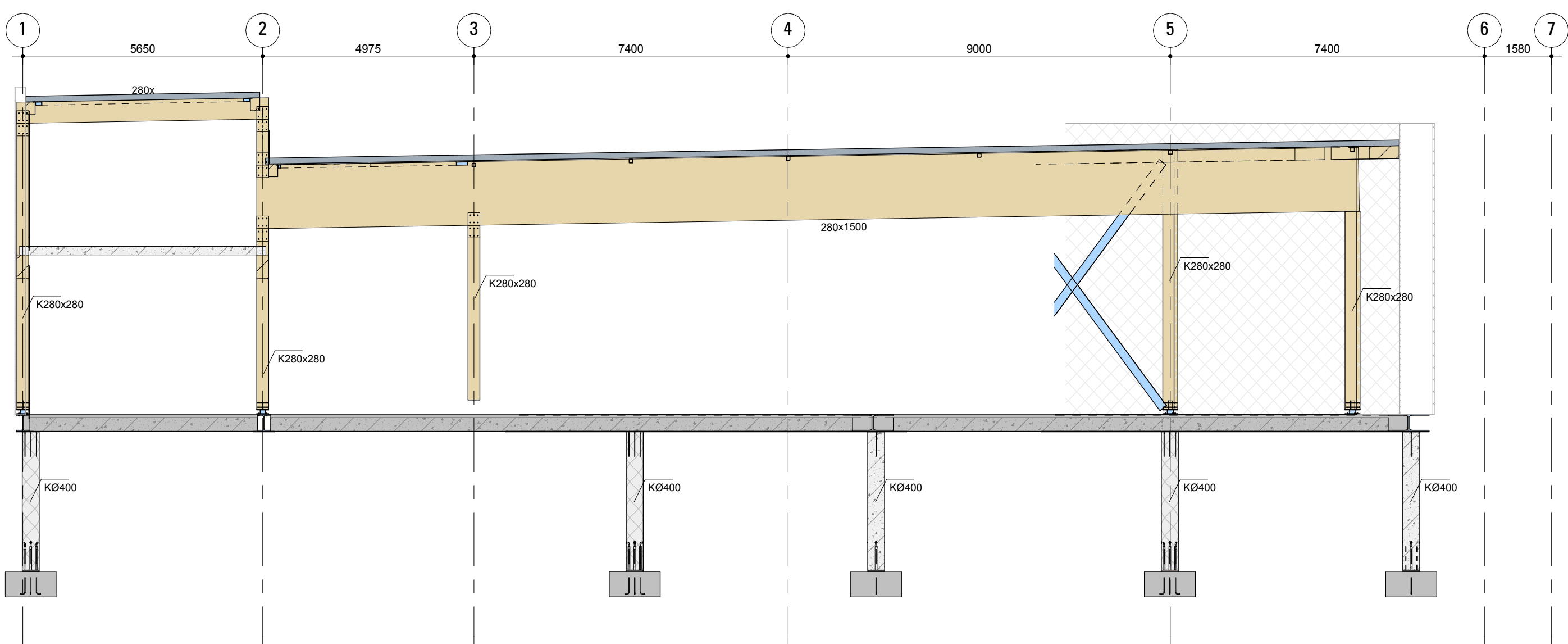
Detail H1



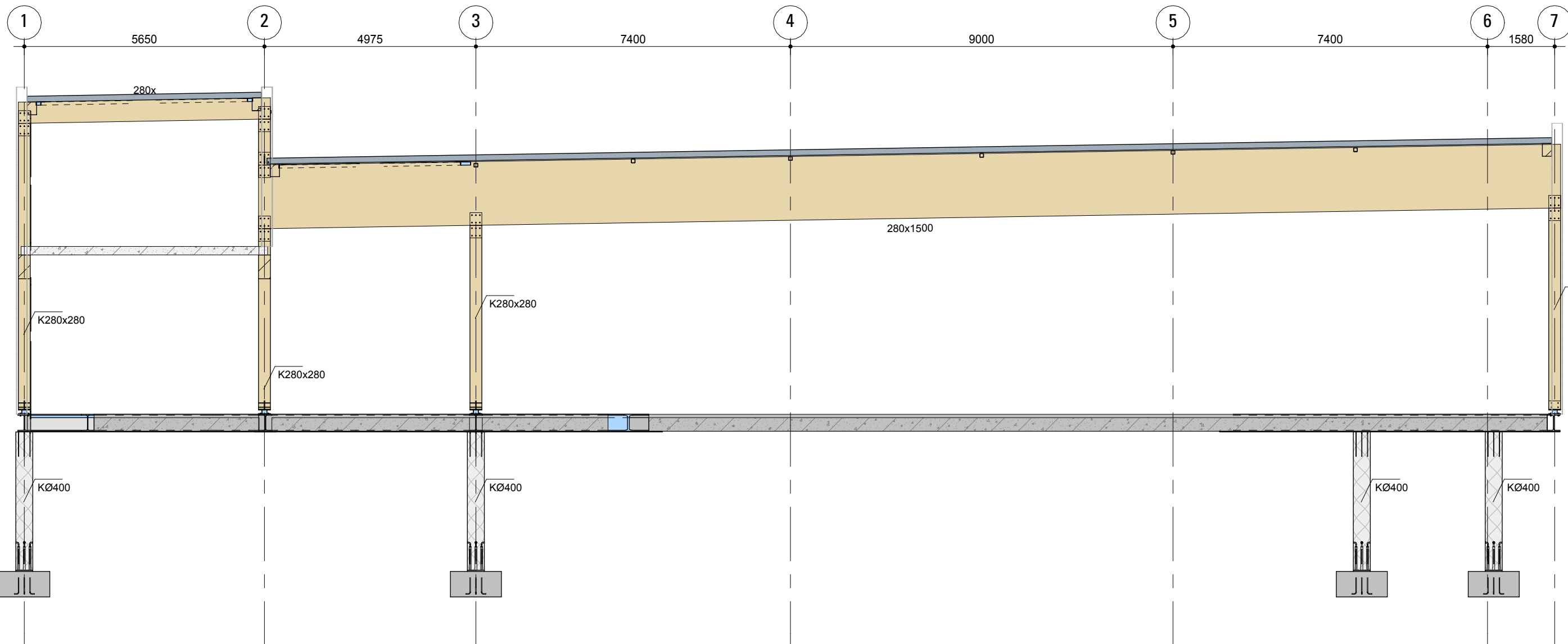
Detail I



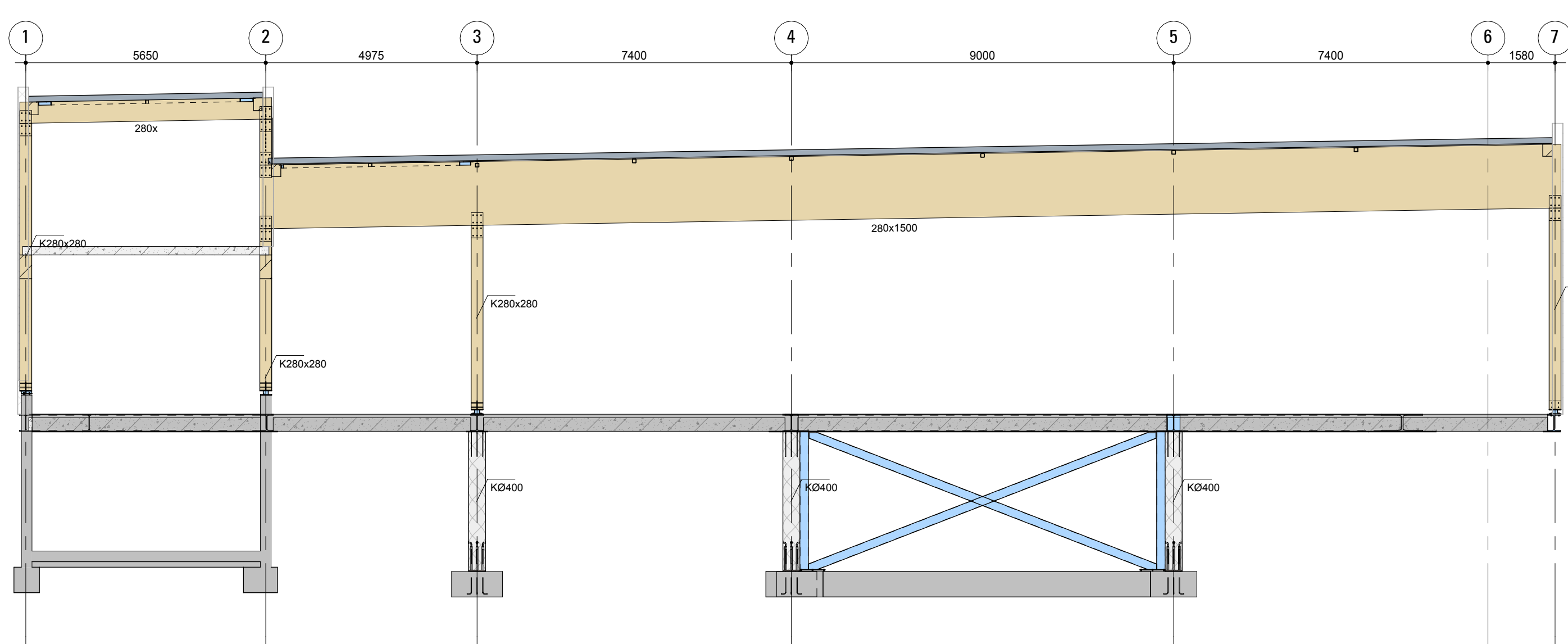
Detail J



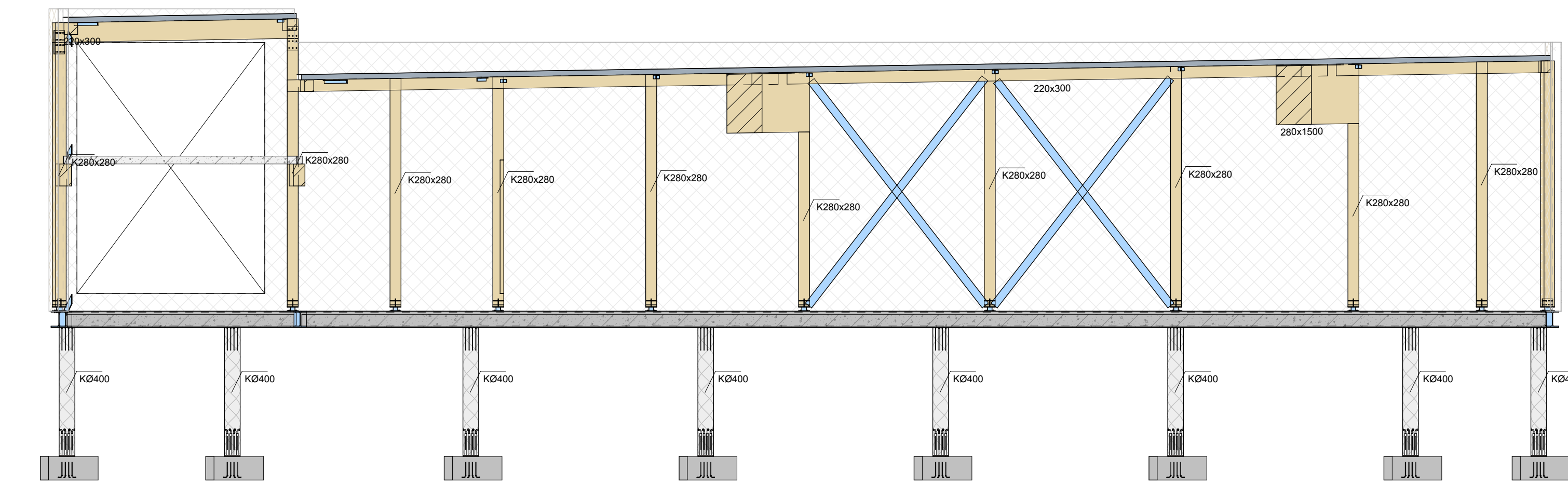
Detail D



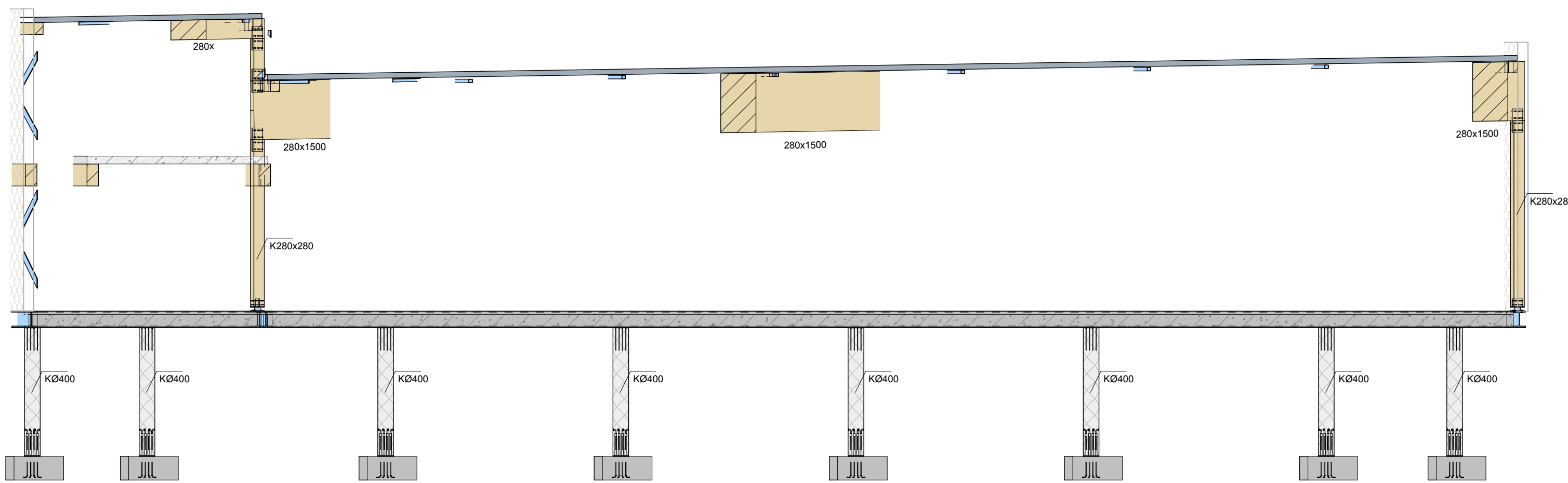
Detail F



Detail G



Detail A



Detail B

| | | | | | |
|---------------------|------------|---------------|--|----------|----------|
| | | | | | |
| | | | | | |
| | | | | | |
| | | | | | |
| A | 16-10-2025 | Optimalisatie | | | |
| Wf: | Datum: | Omschrijving: | | Gebouwt: | Gedrukt: |
| Berekening: | | | | | |
| Model architect: | | | | | |
| Model installateur: | | | | | |

| | | | | | |
|----------------|---------------------------|----------|-------------------|----------------------|-------------|
| Project: | Nieuwbouw Lidl Wormerveer | | | | |
| Locatie: | Wormerveer | | | | |
| Opdrachtgever: | Lidl Nederland GmbH | | | | |
| Architect: | Buro Ursem te De Gooij | | | | |
| Ontwerper: | Doorsnedes | | | | |
| Fase: | Definitief ontwerp | | | | |
| Fermt: A0 | Schaal: 1:100 | Gekend: | Status: VOORLOPIG | Projectnummer: 24064 | Blad: BA-11 |
| | | Gedrukt: | Datum: | | |



Laan Gooij de Heide 102-4
3728 JR Grootegert
info@dijkhuis-ingenieurs.nl
www@dijkhuis-ingenieurs.nl