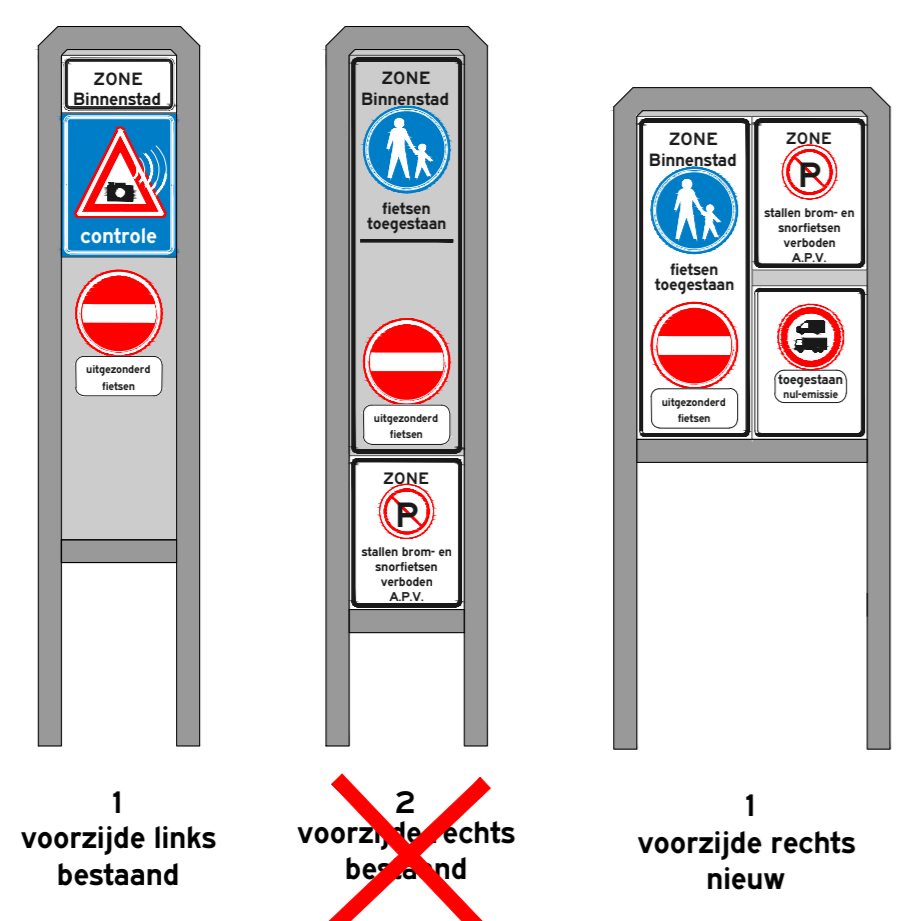


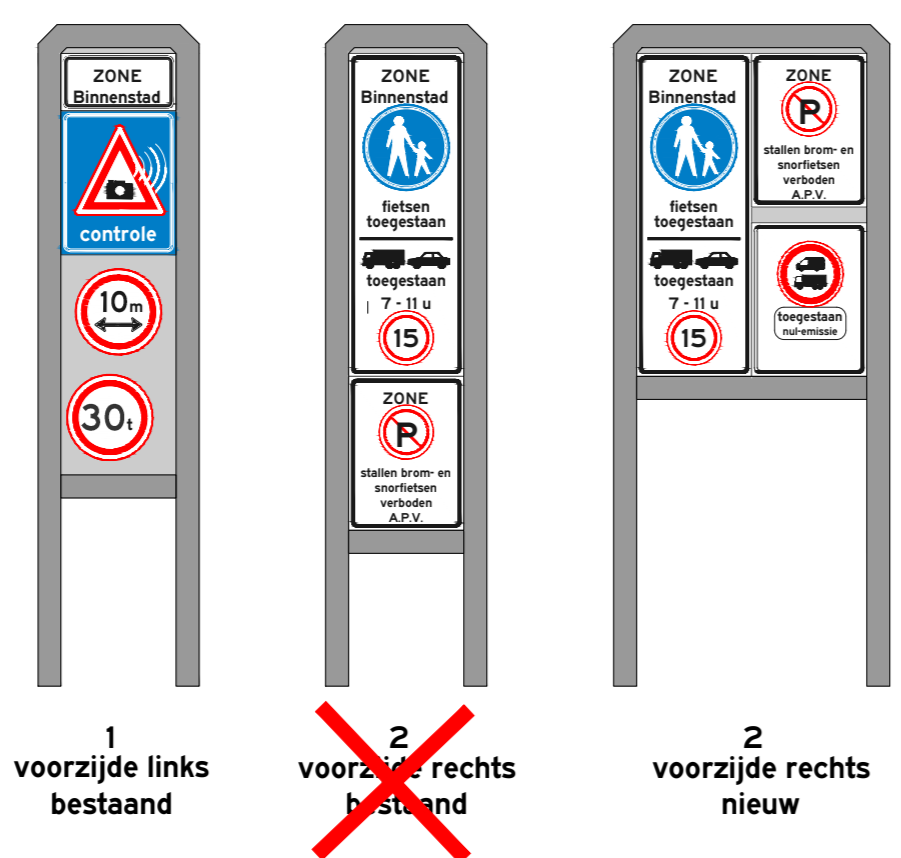
# Bebording toegangswegen

## Binnenstad in

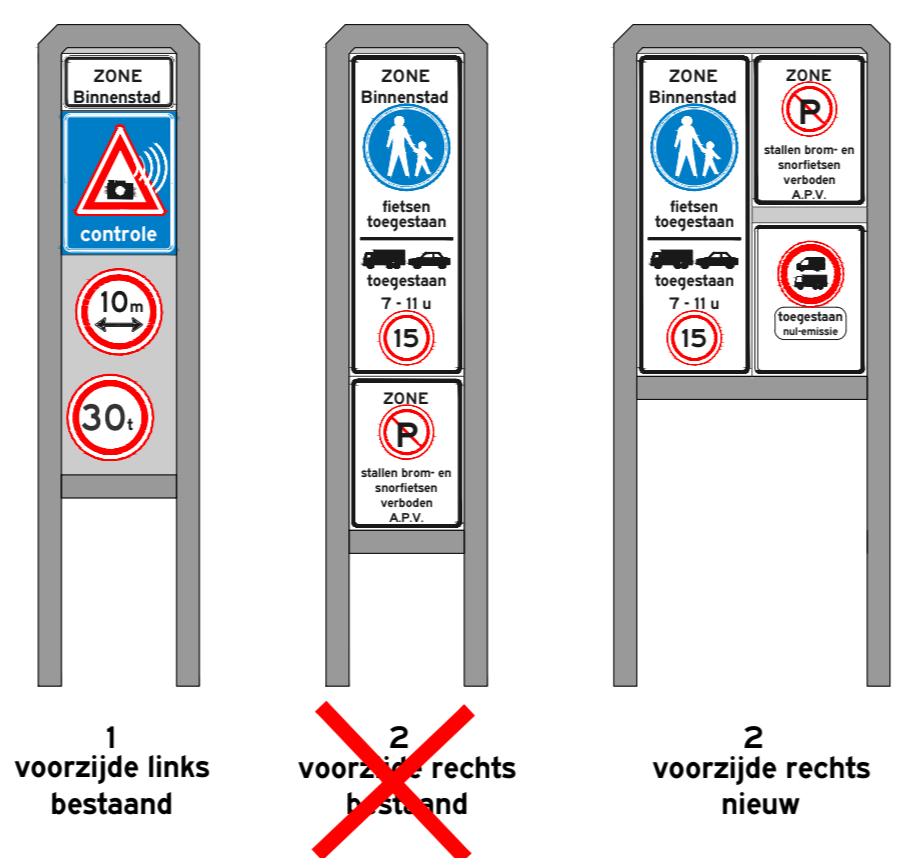
A. Korte Hengelsestraat



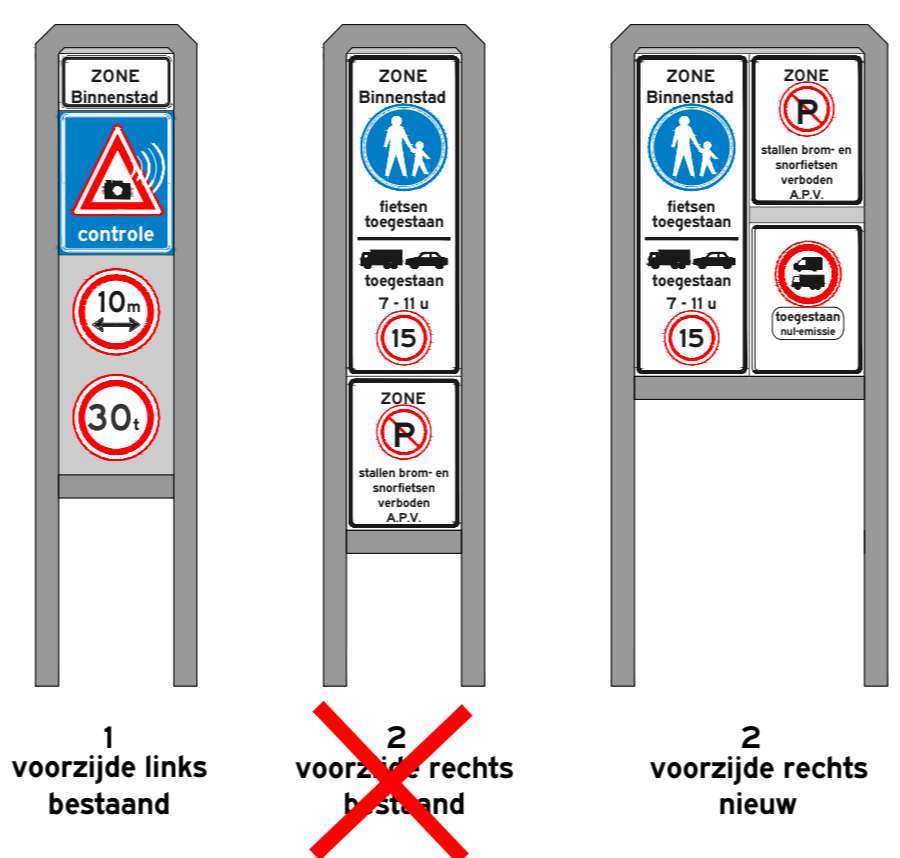
B. Van Lochemstraat



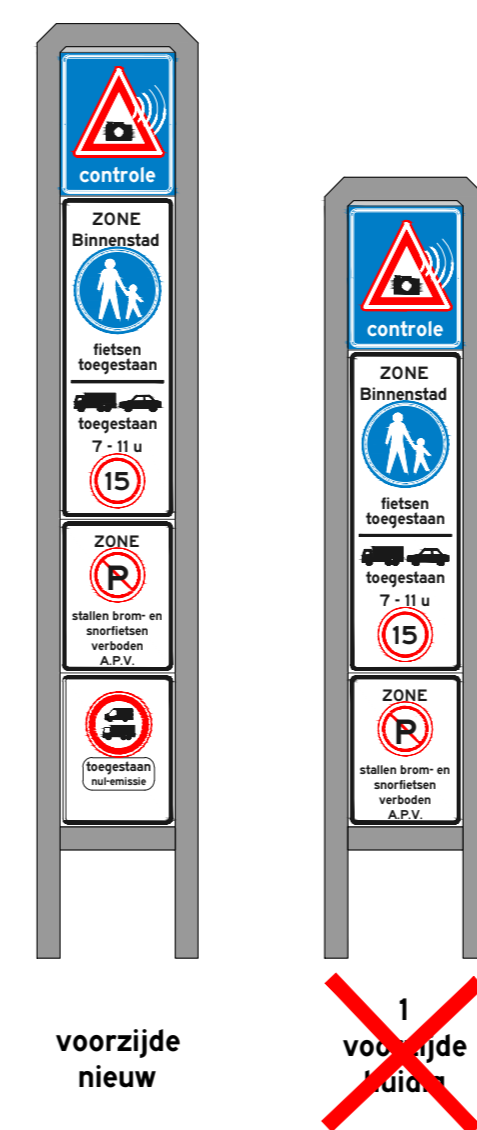
C. De Heurne



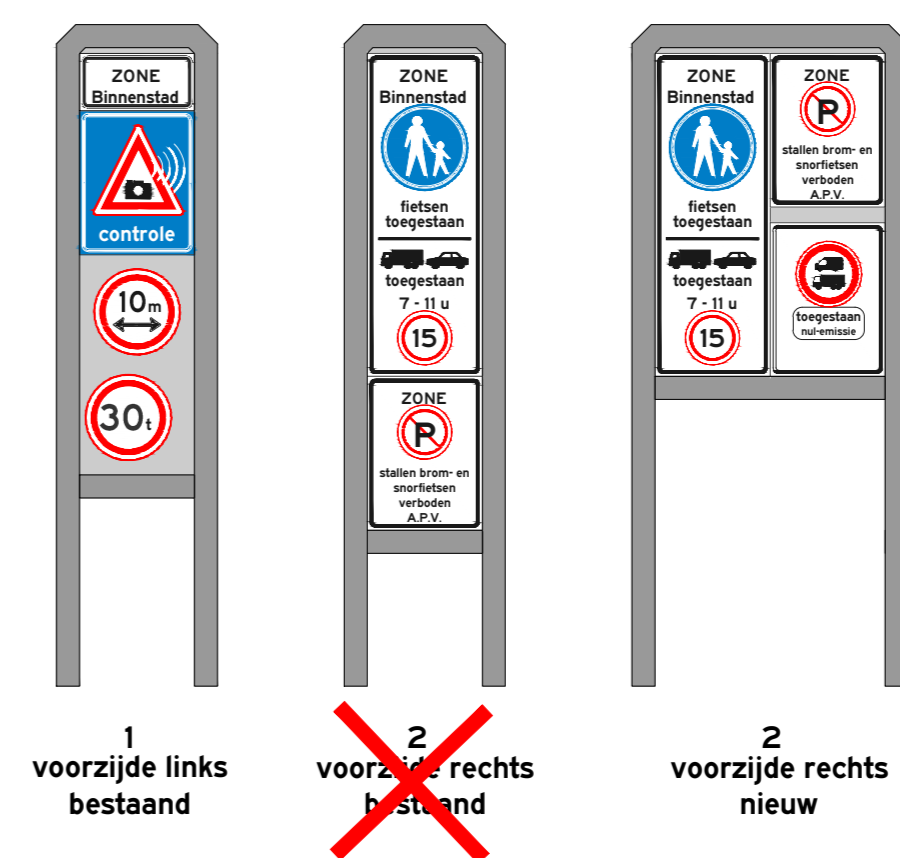
D. De Klomp



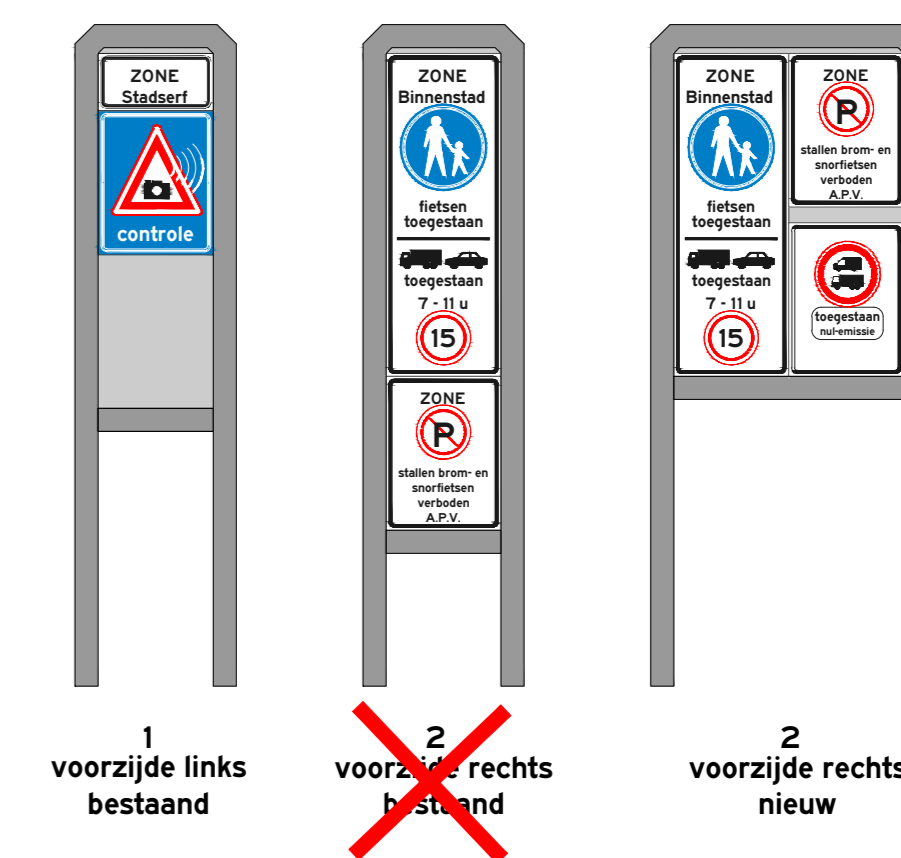
E. Kalandergang



F. Nijverheidstraat (t.h.v. politiebureau)

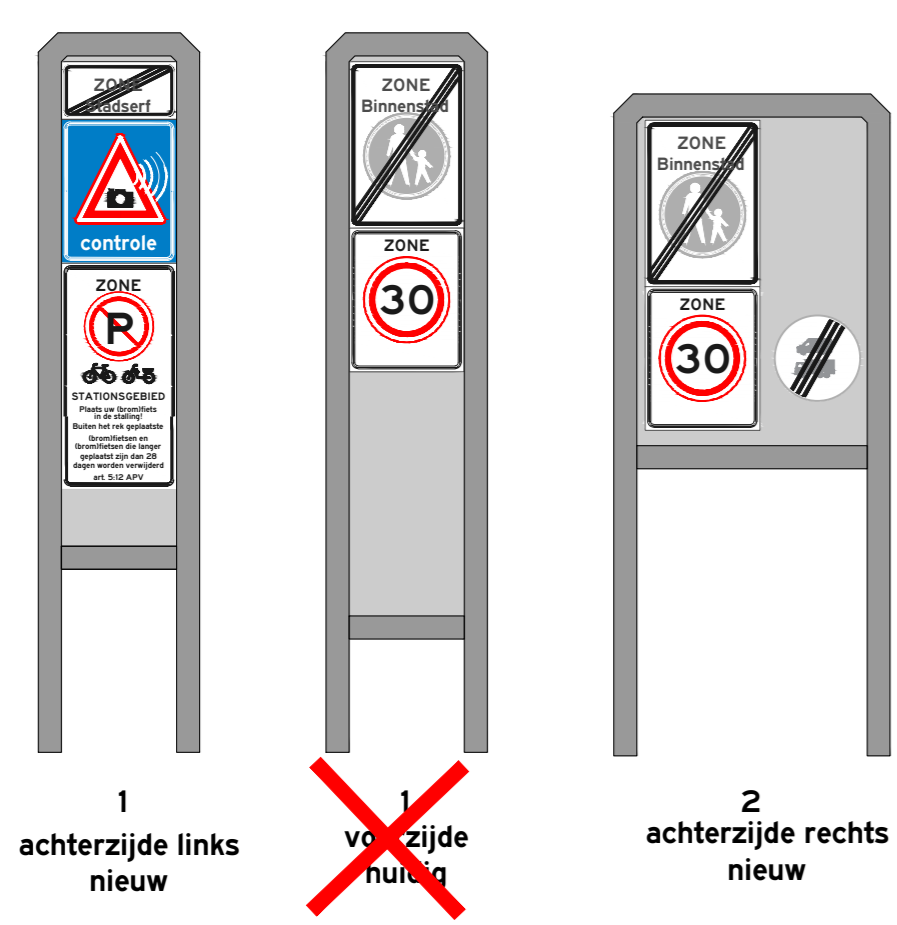


G. Brammelerstraat

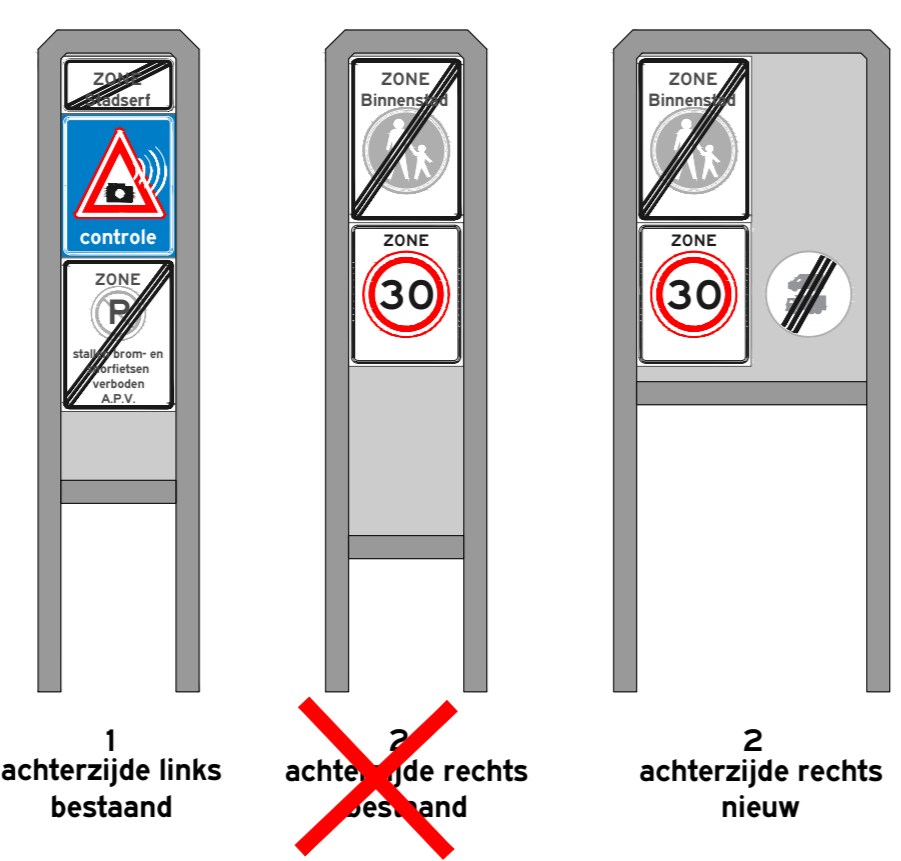


## Binnenstad uit

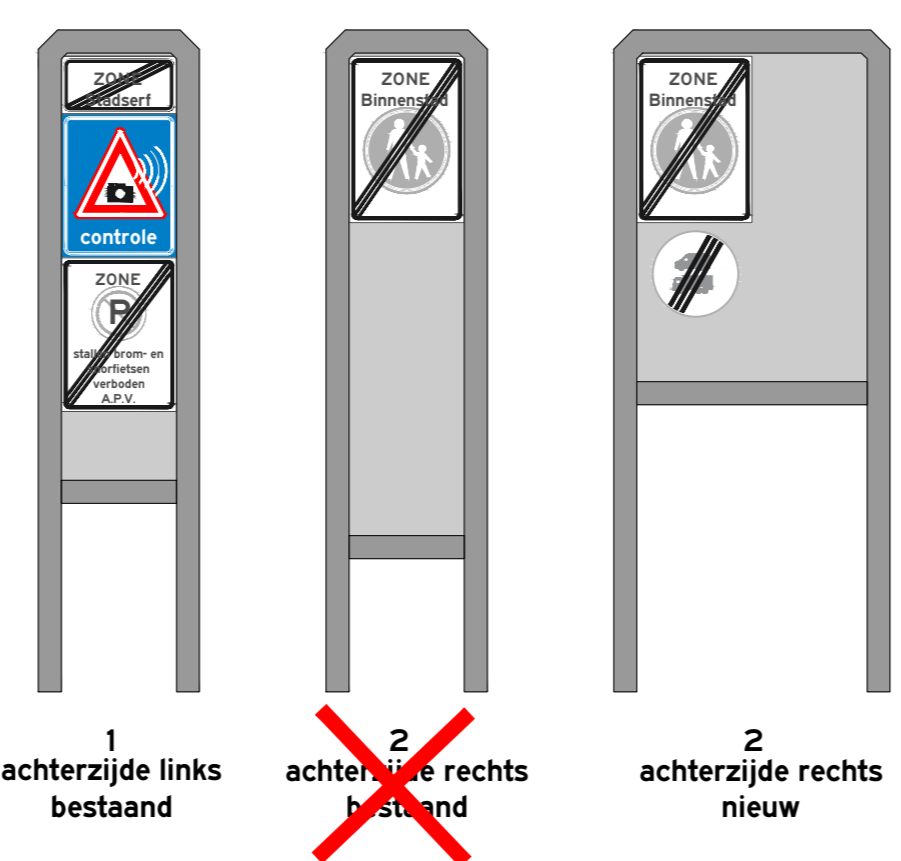
Korte Hengelsestraat



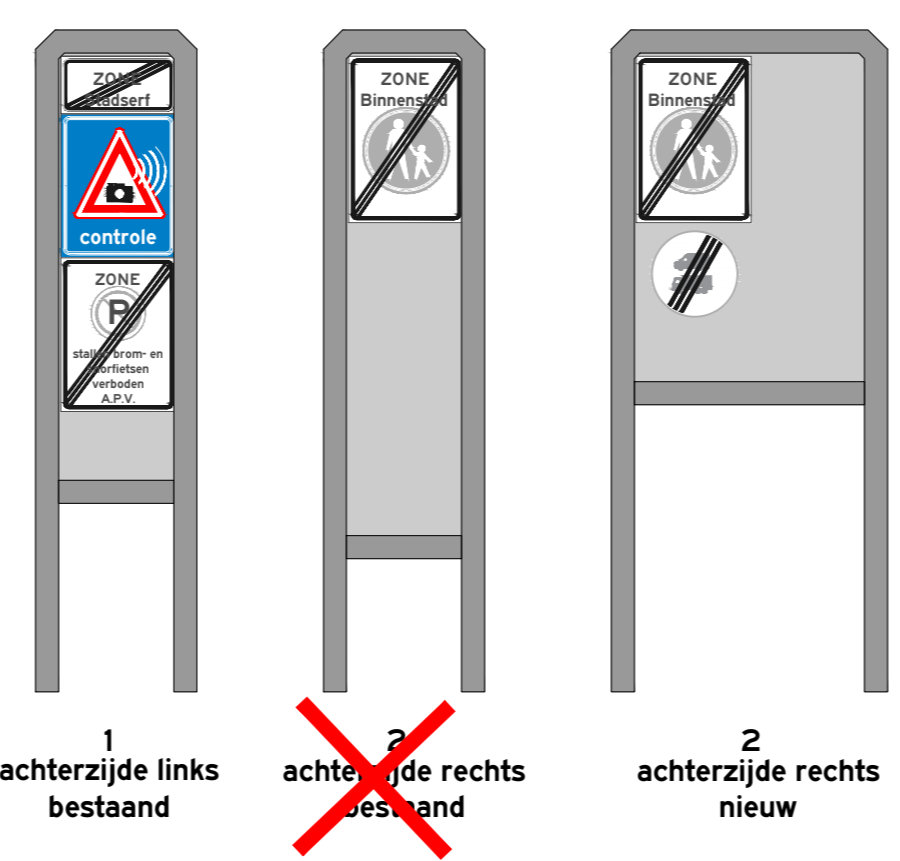
Van Lochemstraat



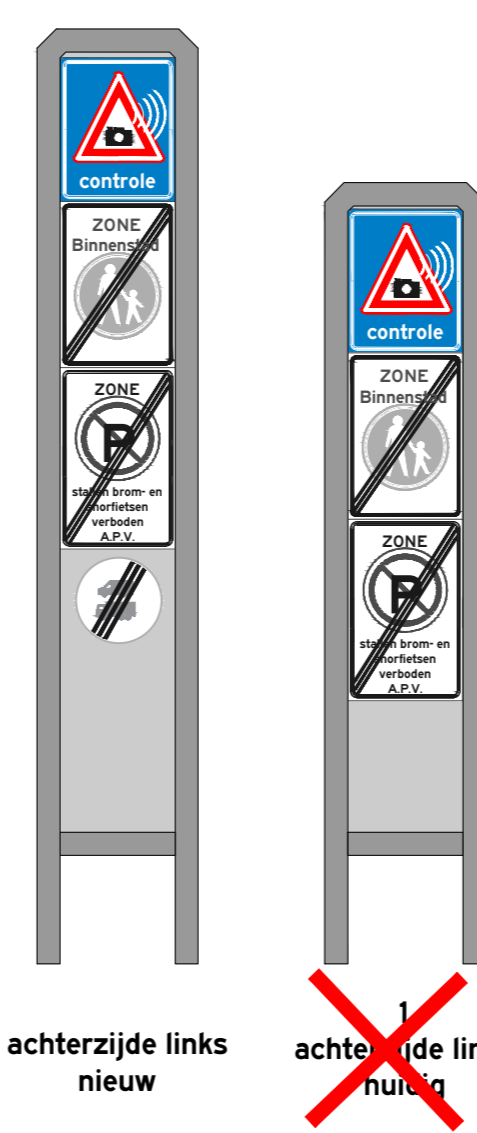
De Heurne



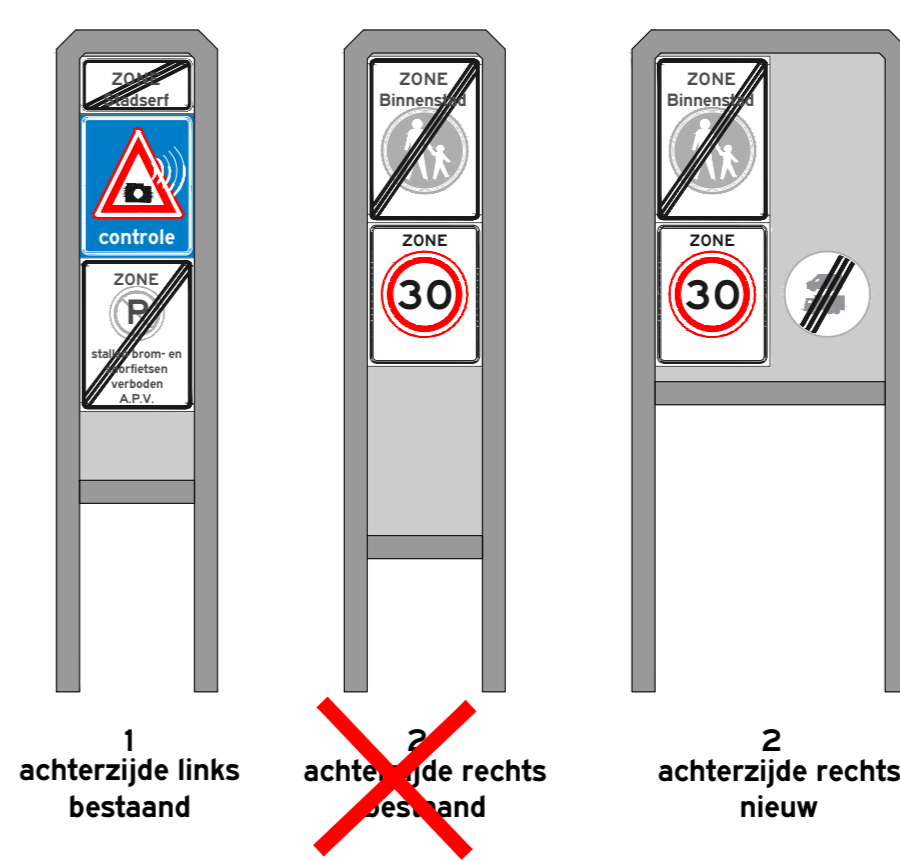
De Klomp



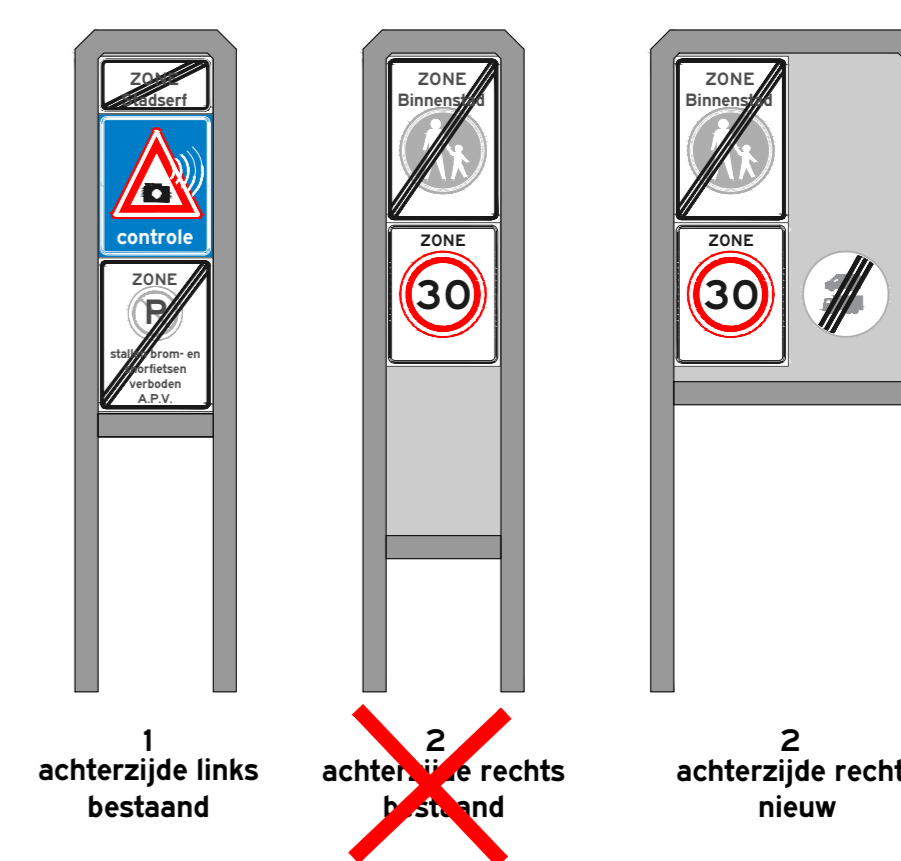
Kalandergang



Nijverheidstraat (t.h.v. politiebureau)



Brammelerstraat



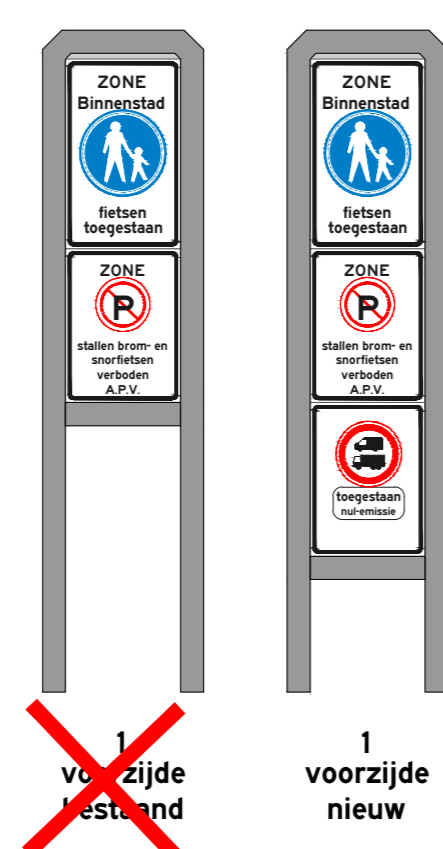
Korte Hengelsestraat (t.p.v. kruispunt Brammelerstraat)



Brammelerstraat (bij inritconstructie Piet Heinstraat)

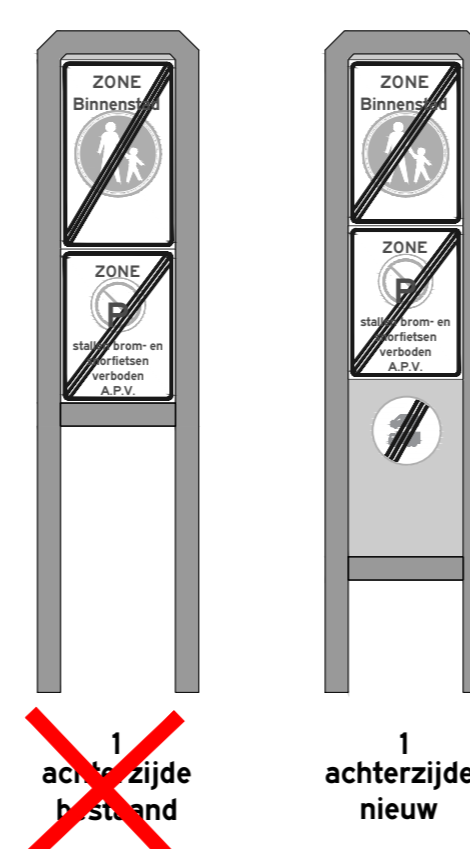


Voetgangerstoegang (portaal)

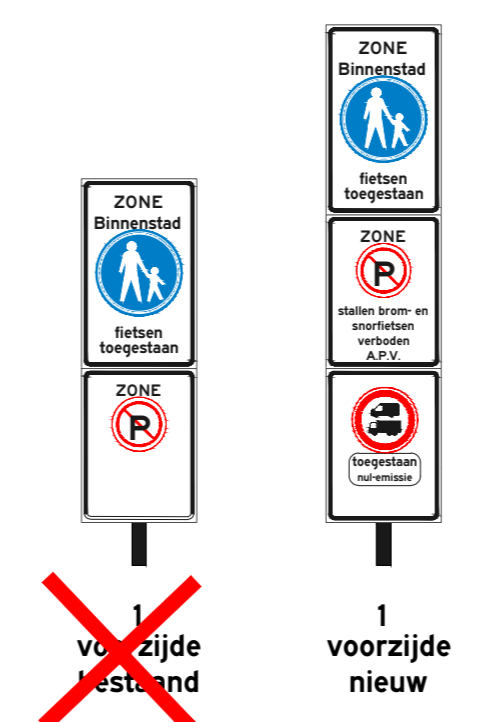


Locaties 1 t/m 16

Voetgangerstoegang (portaal)

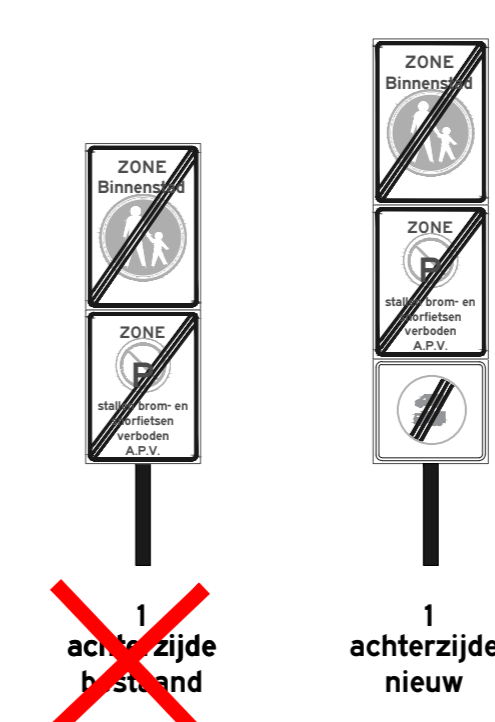


Voetgangerstoegang (paal)



Locaties 1 t/m 16

Voetgangerstoegang (paal)



Project			
NUL EMISSIEZONE BINNENSTAD			
Bebording per locatie			
Formaat	Tekenaar	Datum	Documenttype
A0	P. Drent	2024-11-25	Tekening
Schaal	Gecontroleerd door	Gegevens	
Geen	J. Lufen	2024-11-25	
Tekeningnummer	Aanpak		
	Gemeente Enschede		
Blad	Aantal		
2	2		
Documentstatus			
Definitief			
Tekeningnummer			

