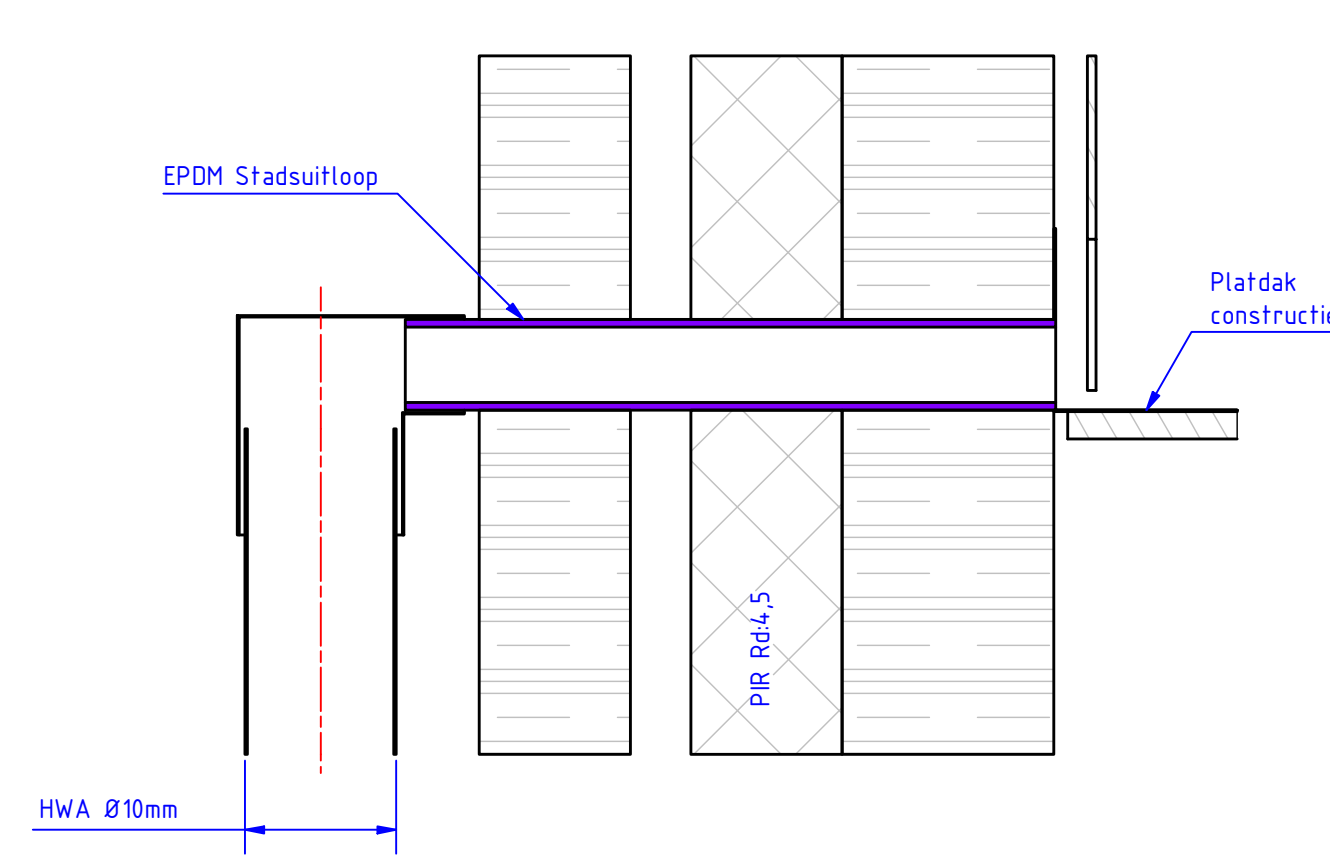
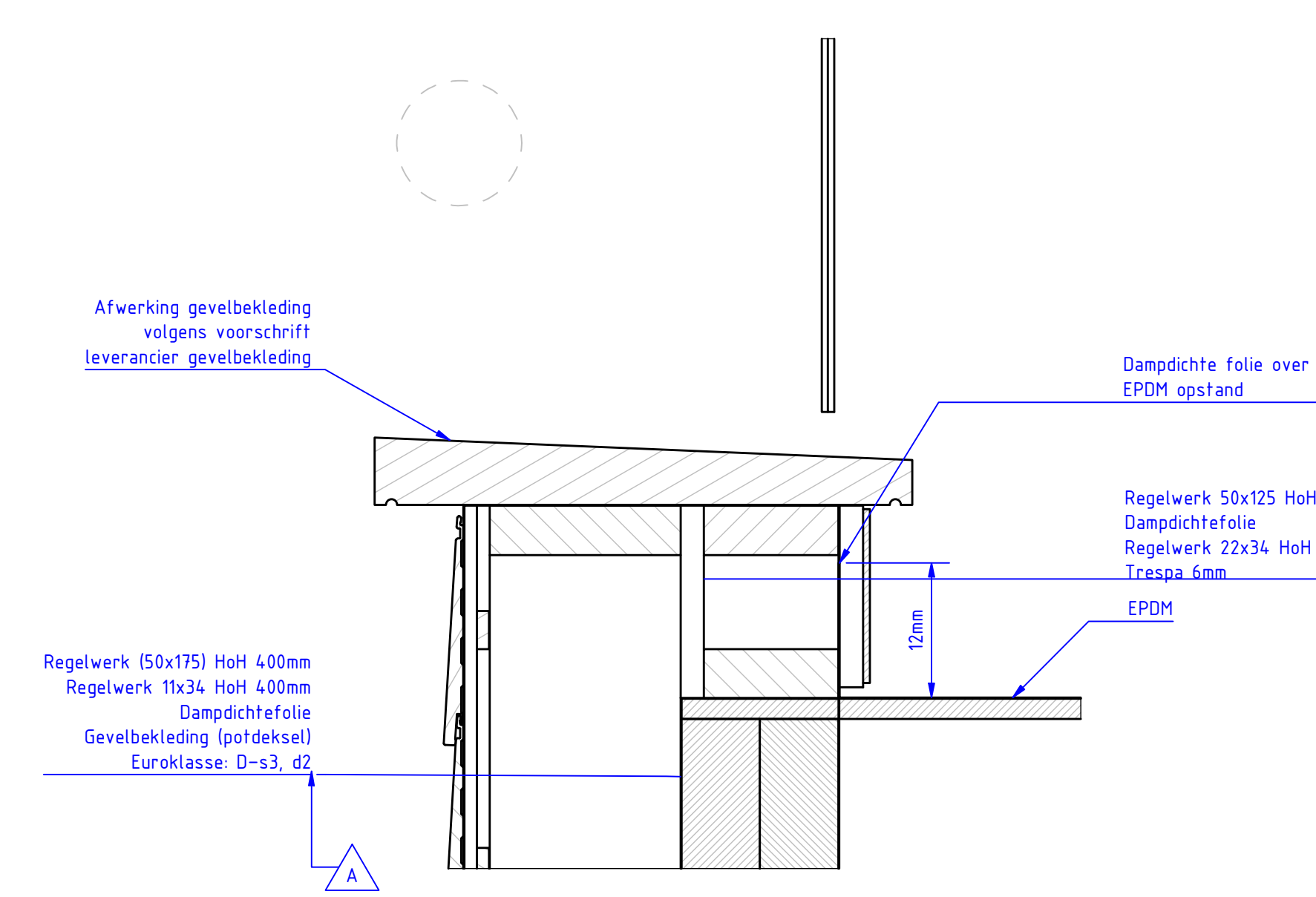
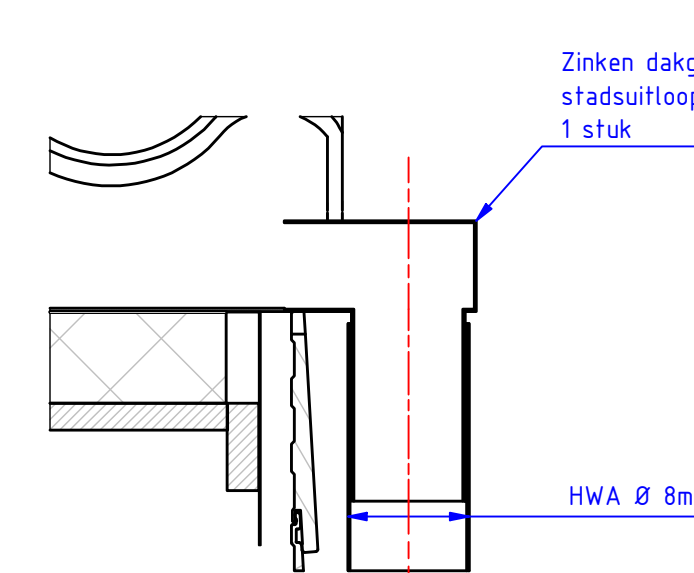
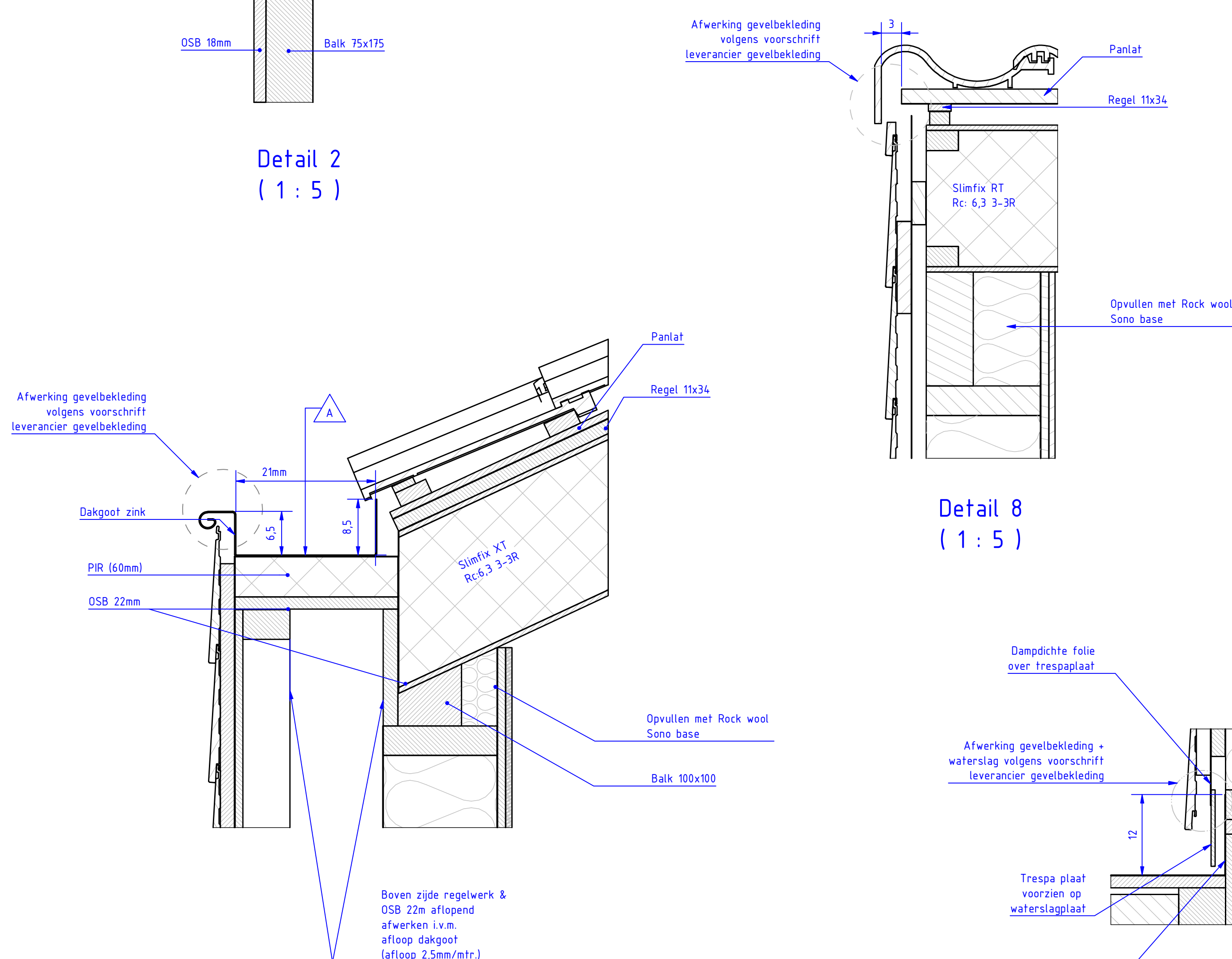
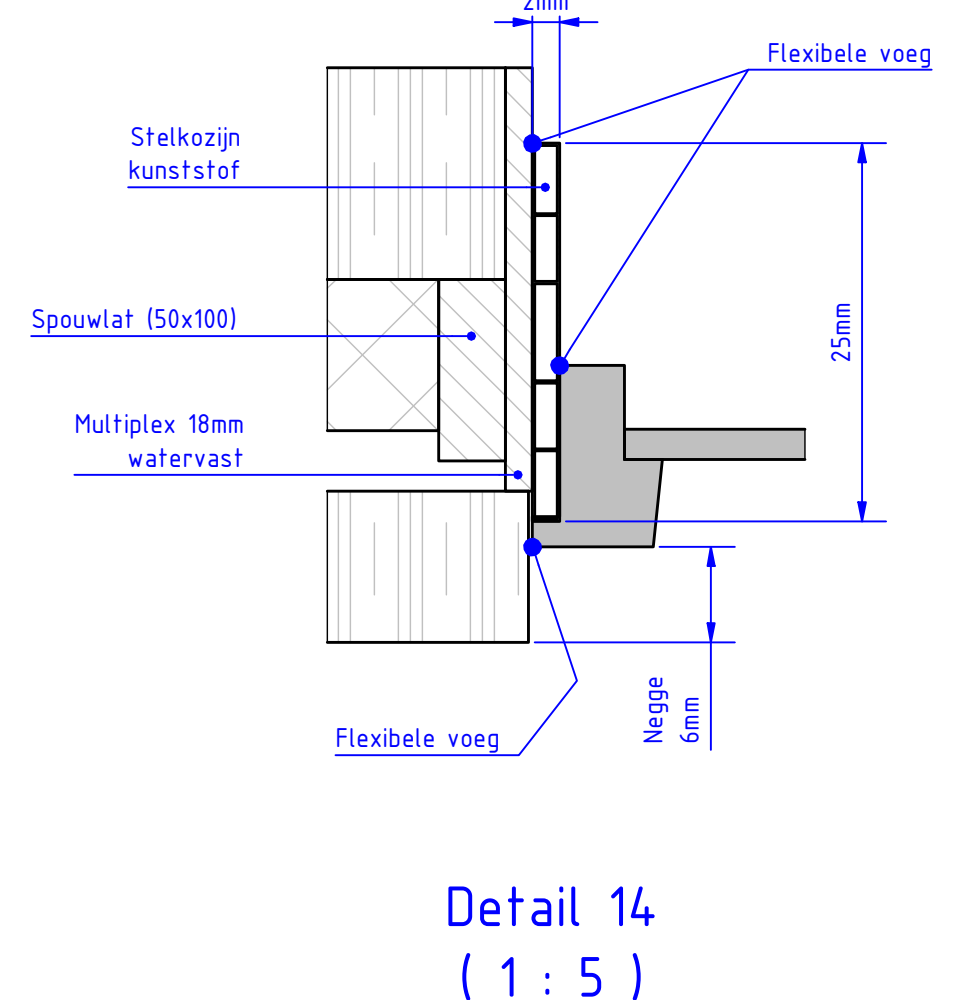
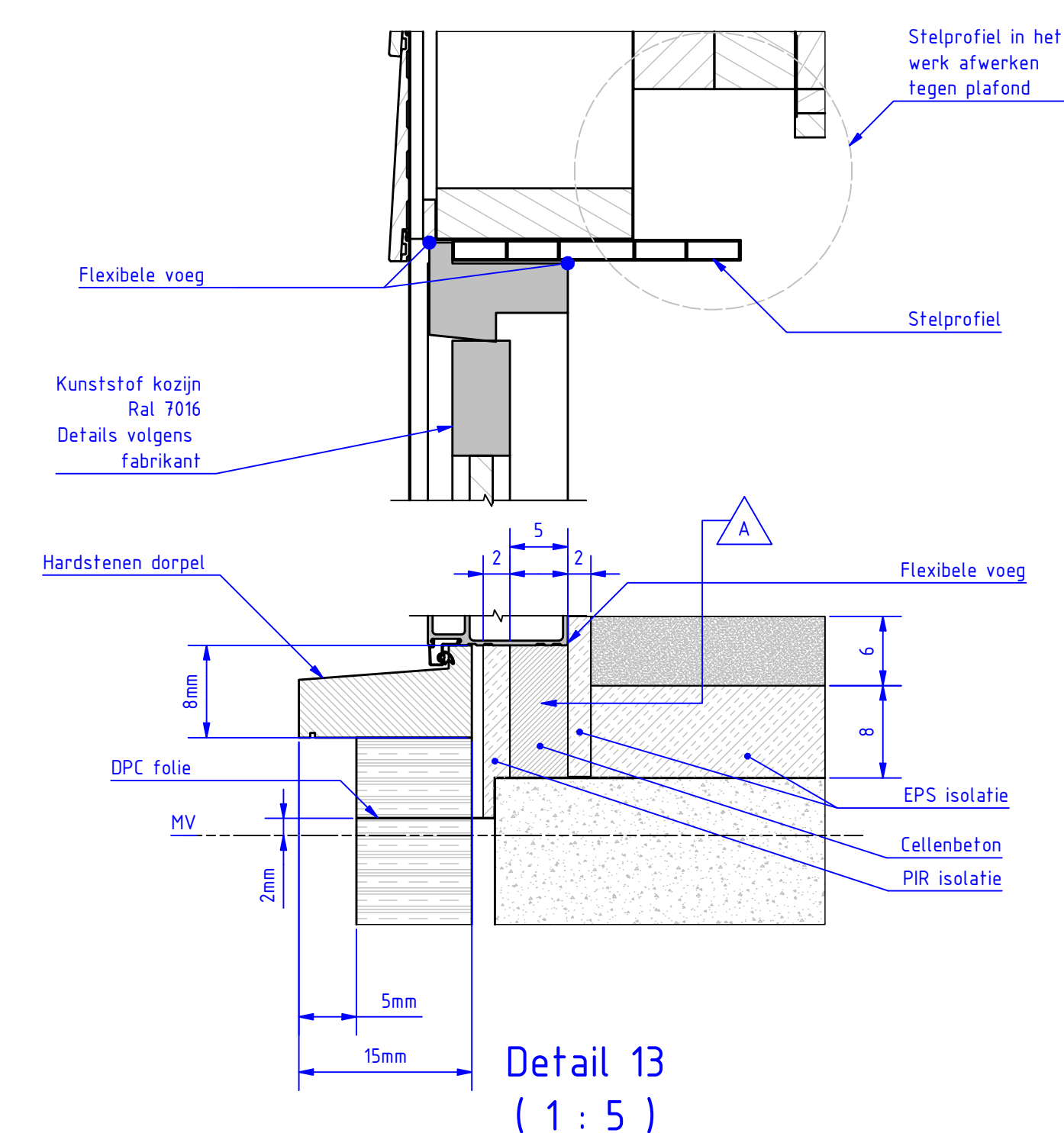
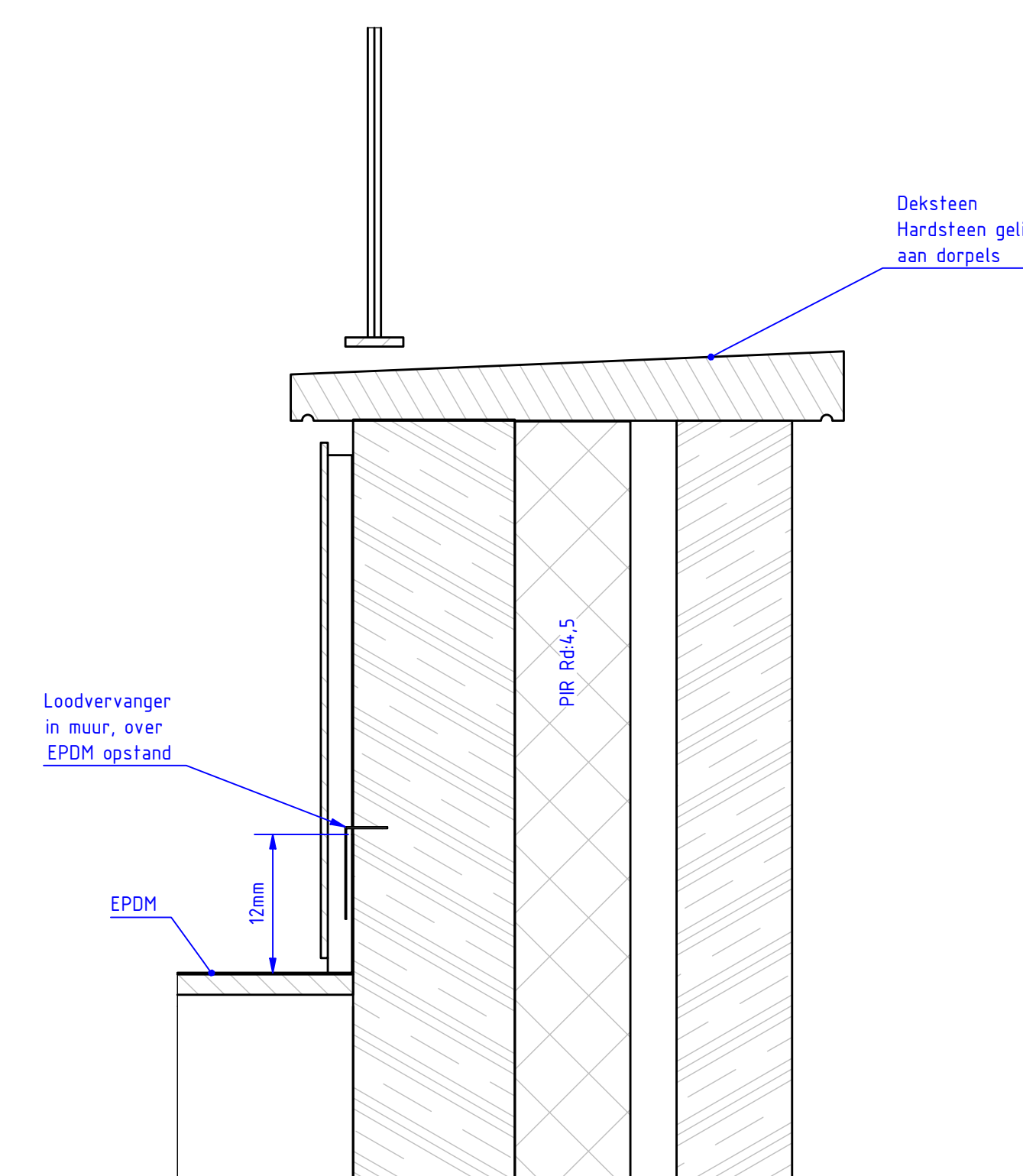
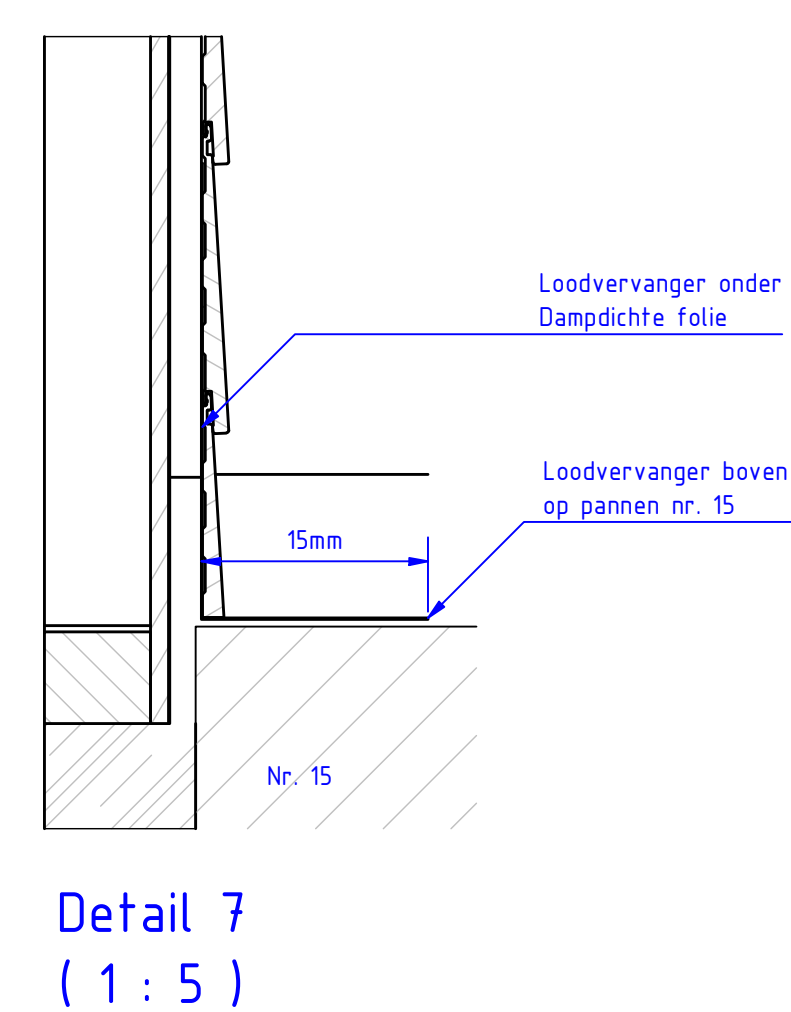
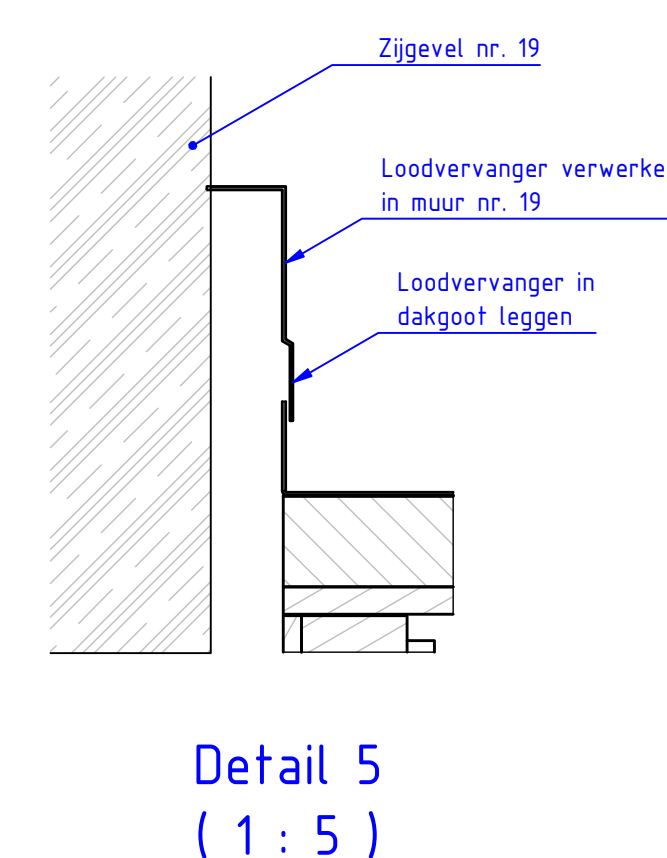
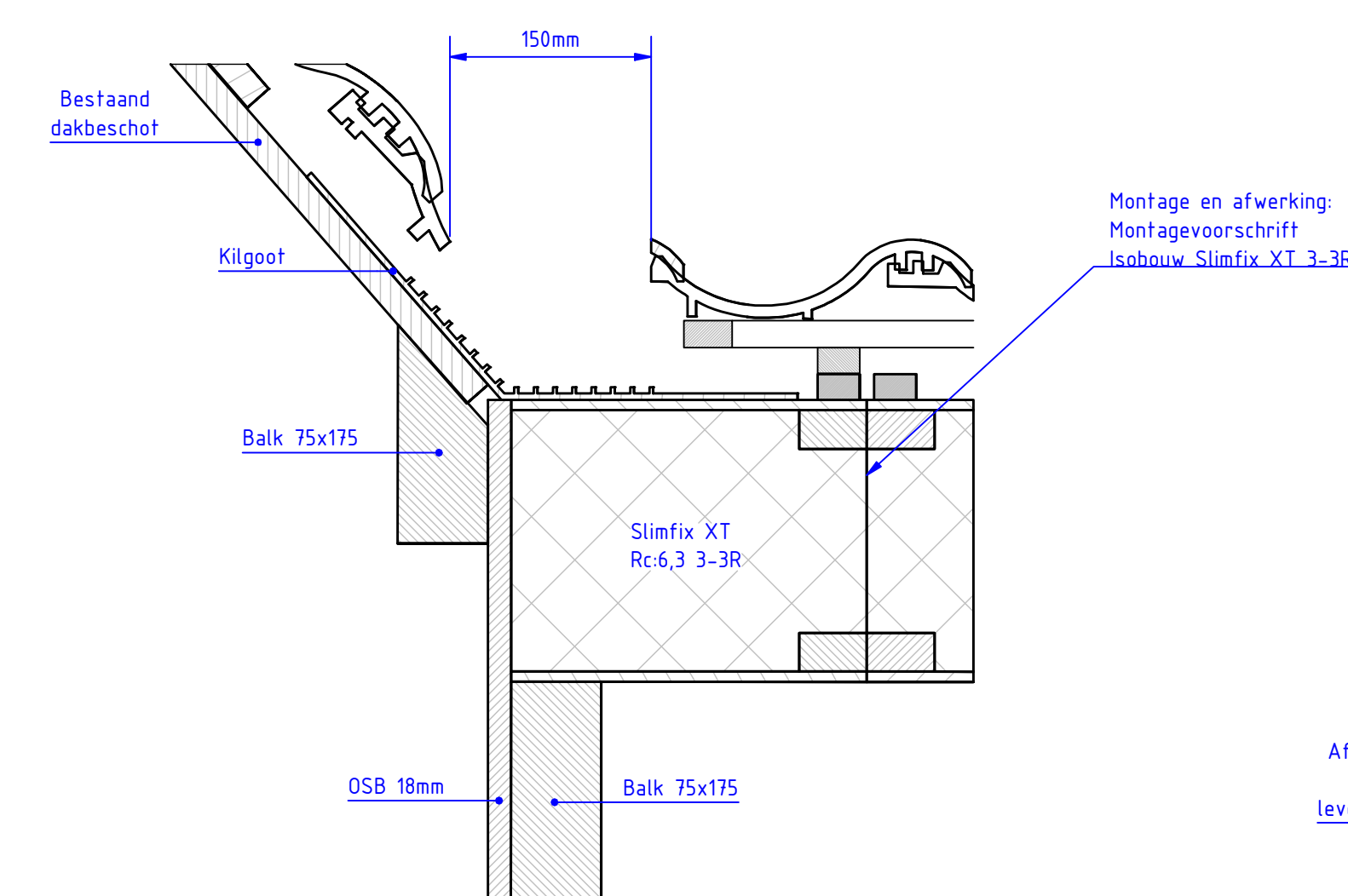
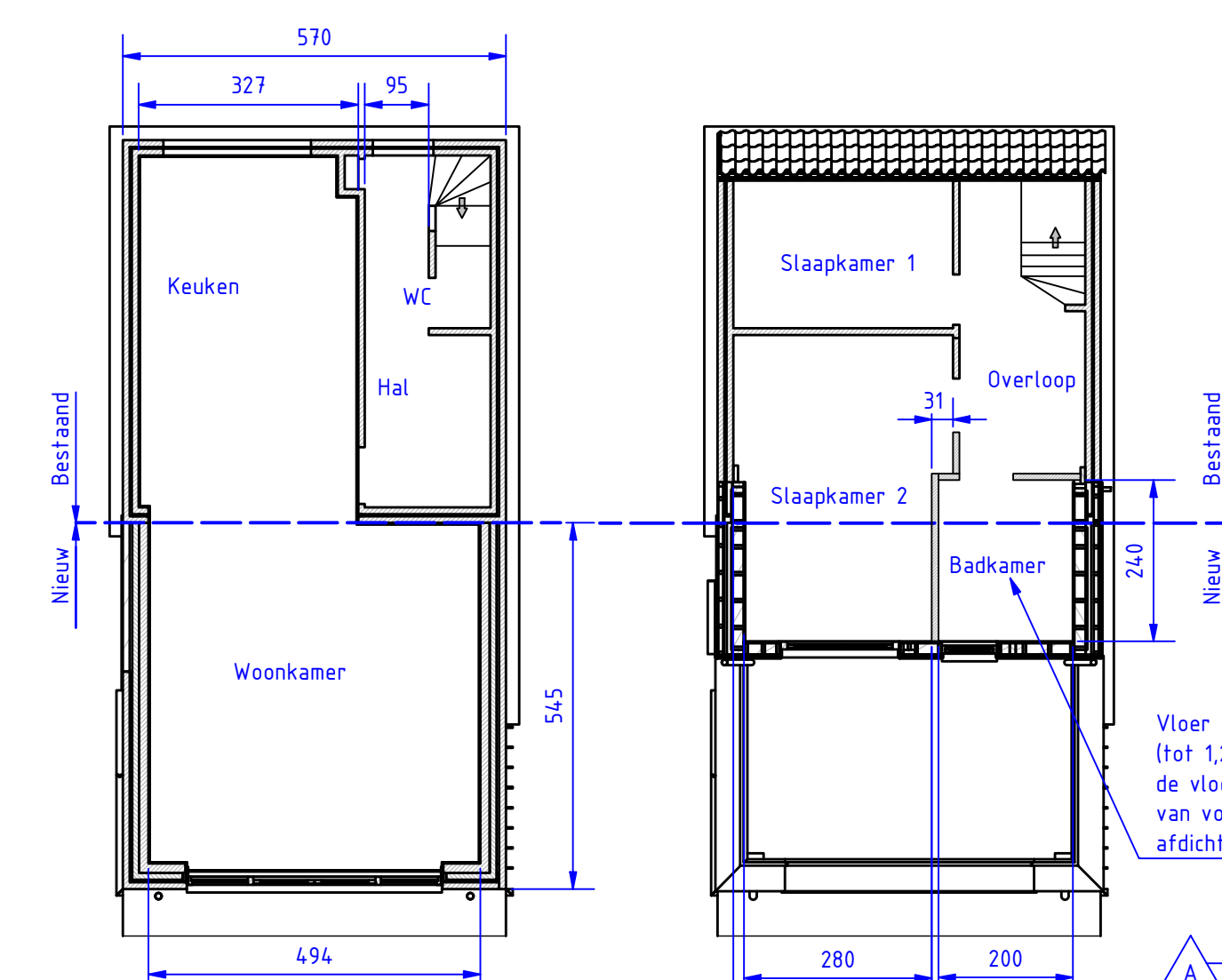
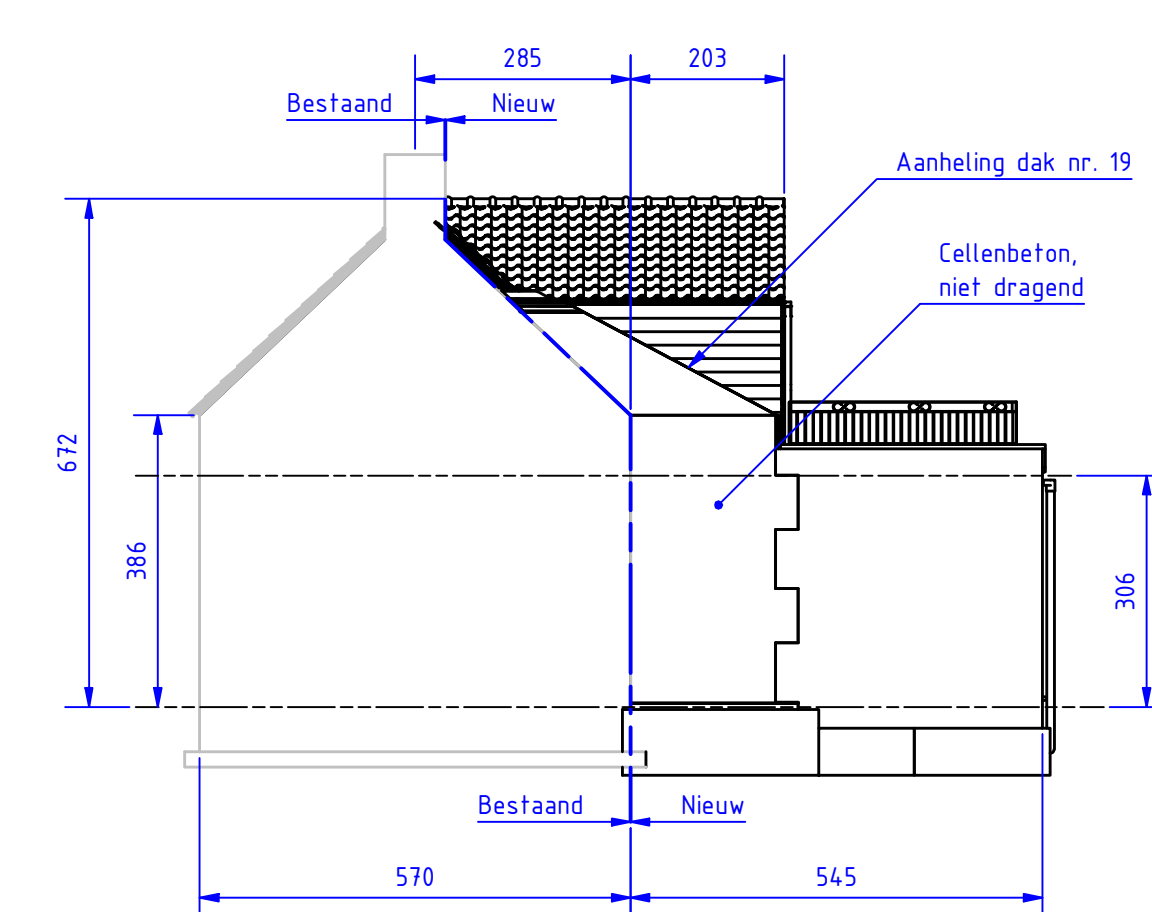
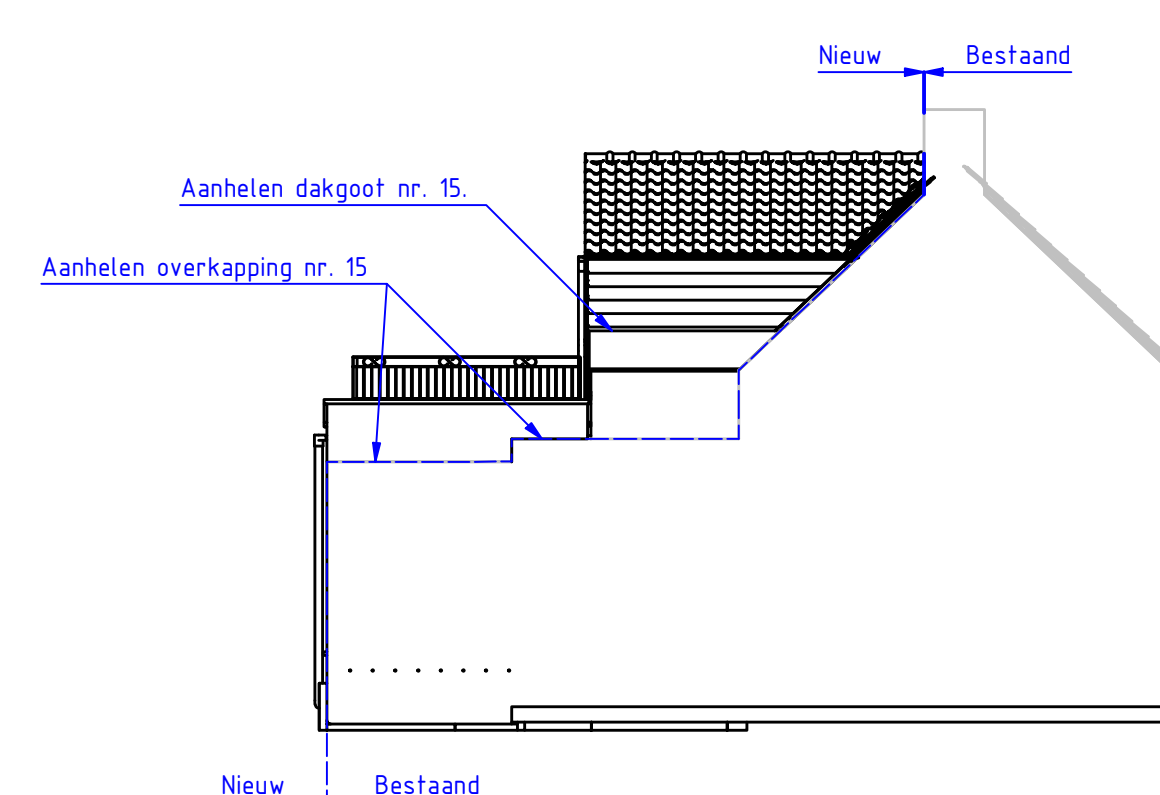
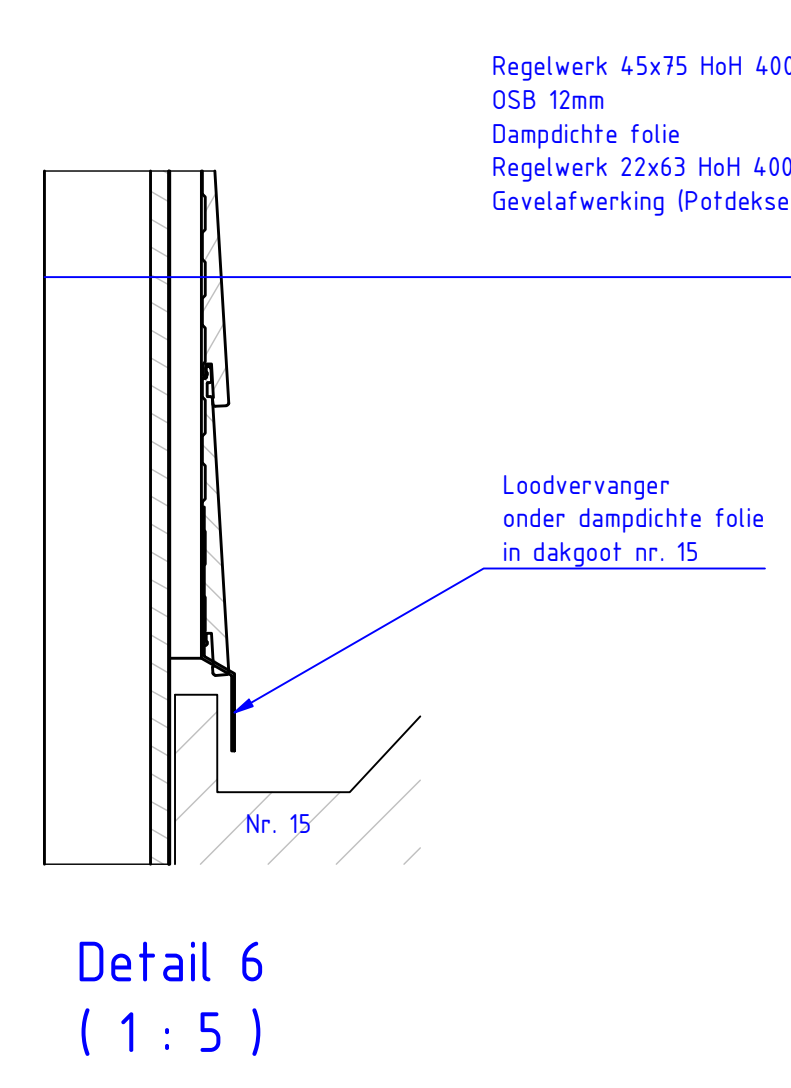
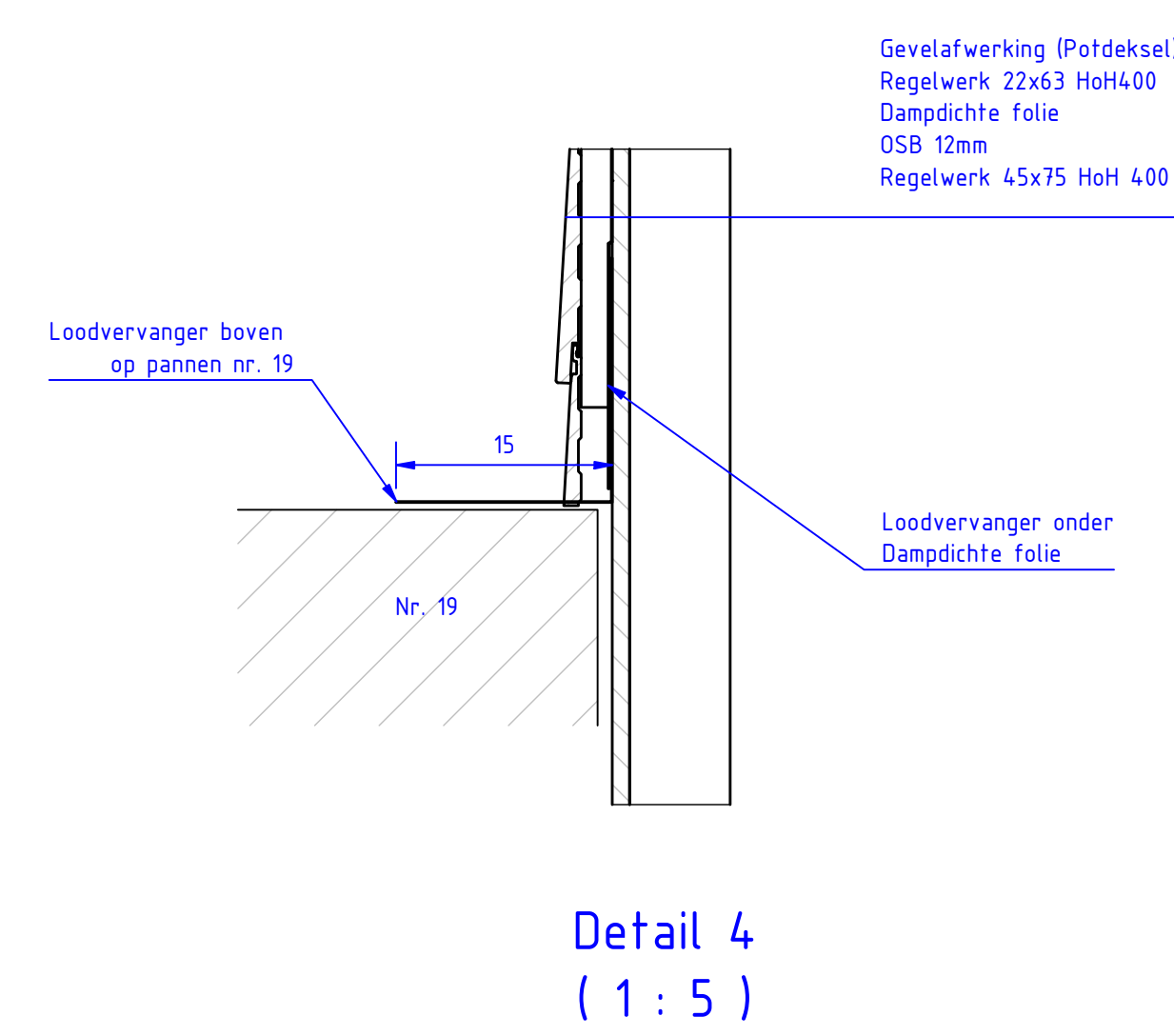
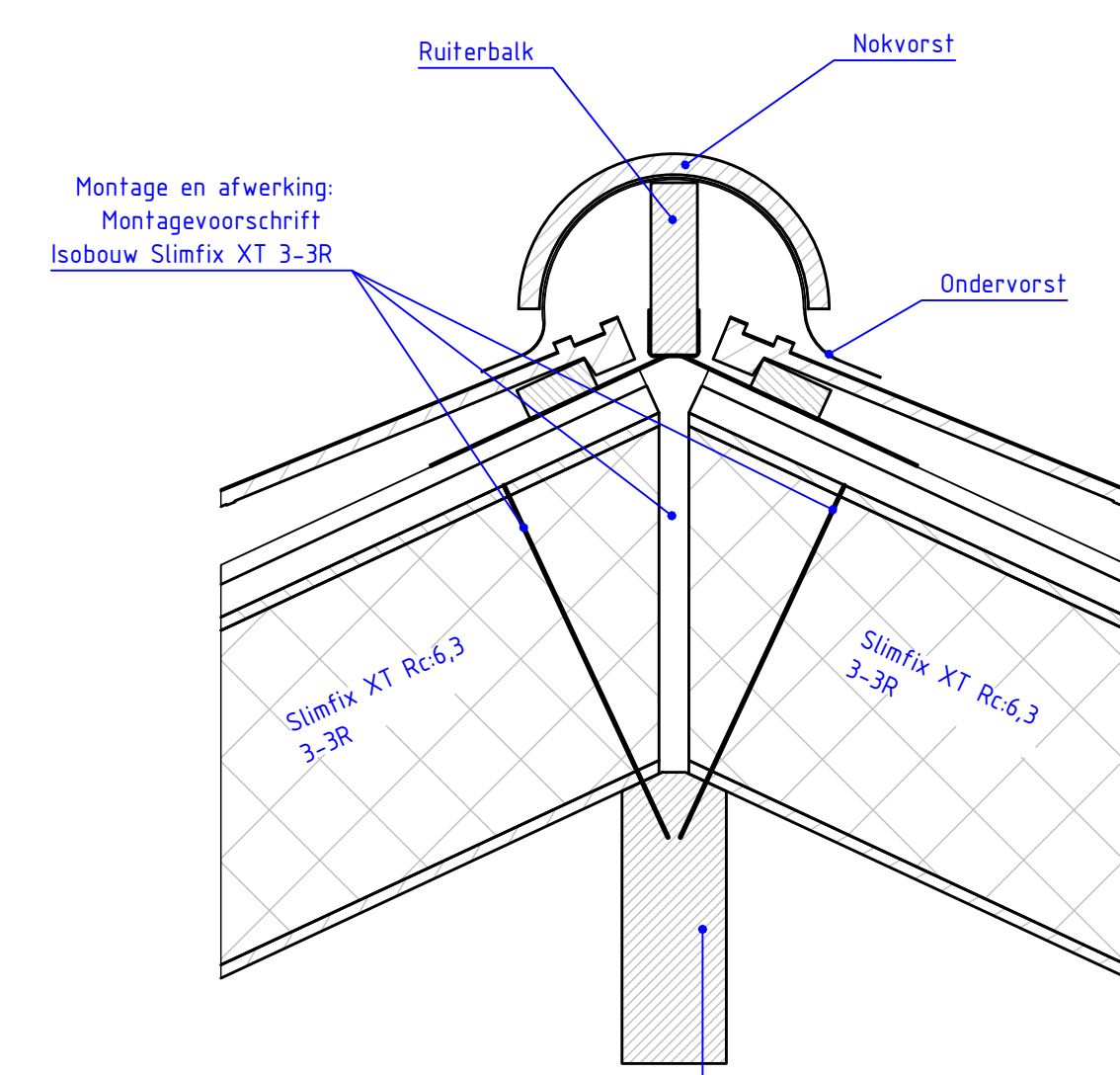
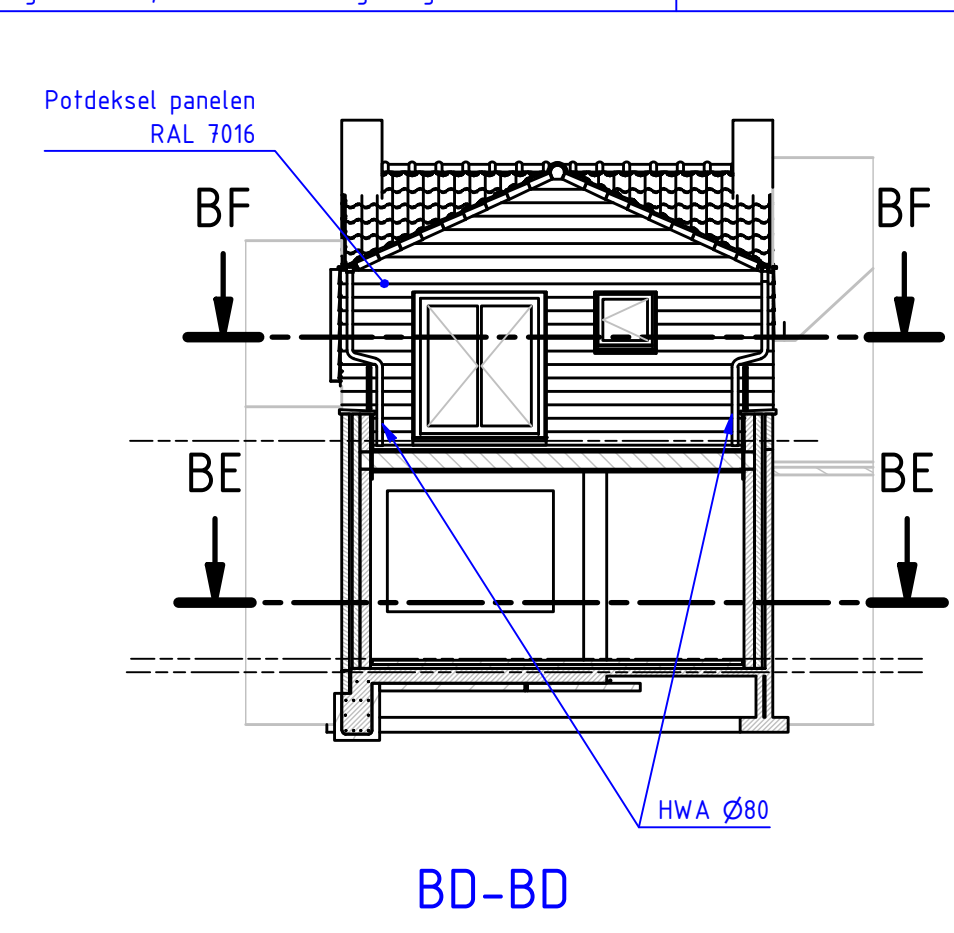
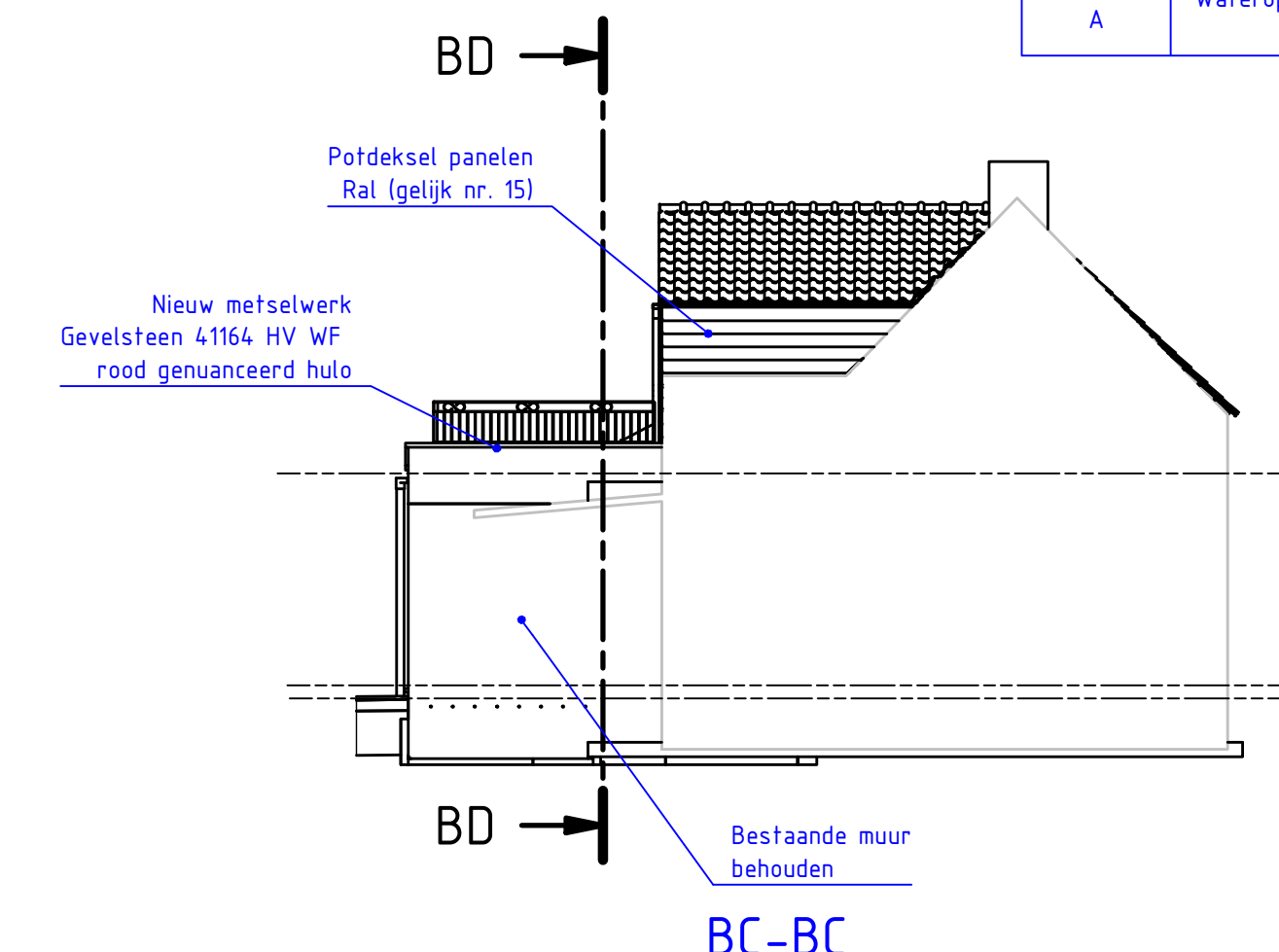
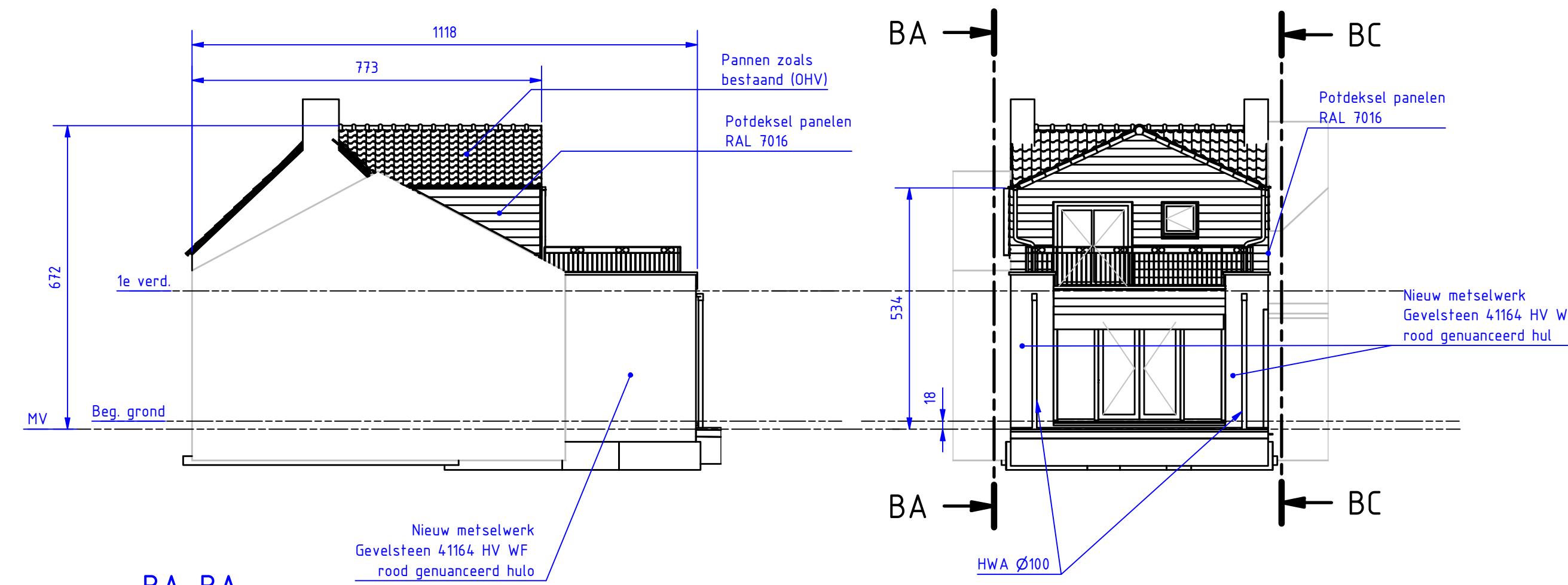
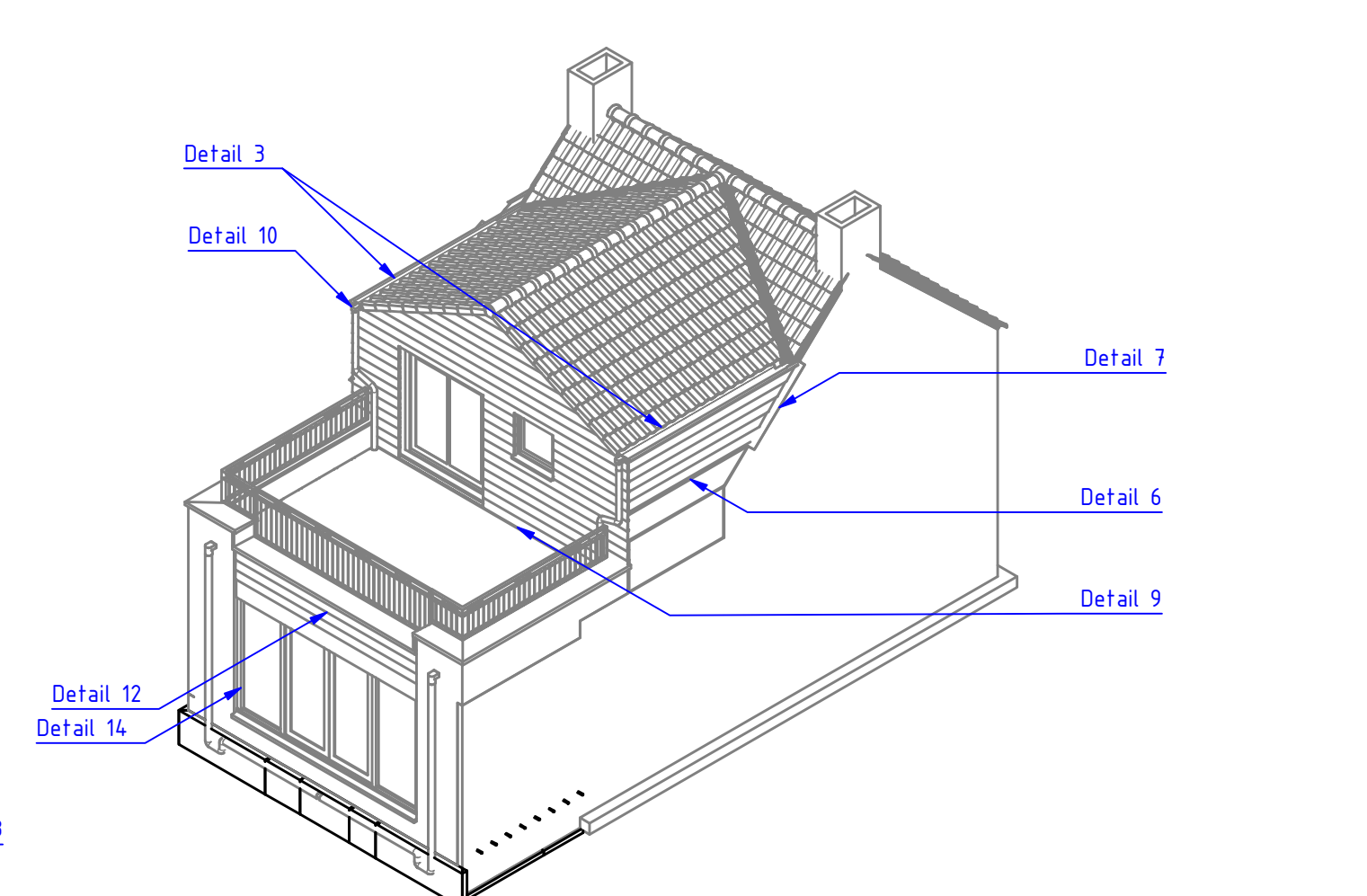
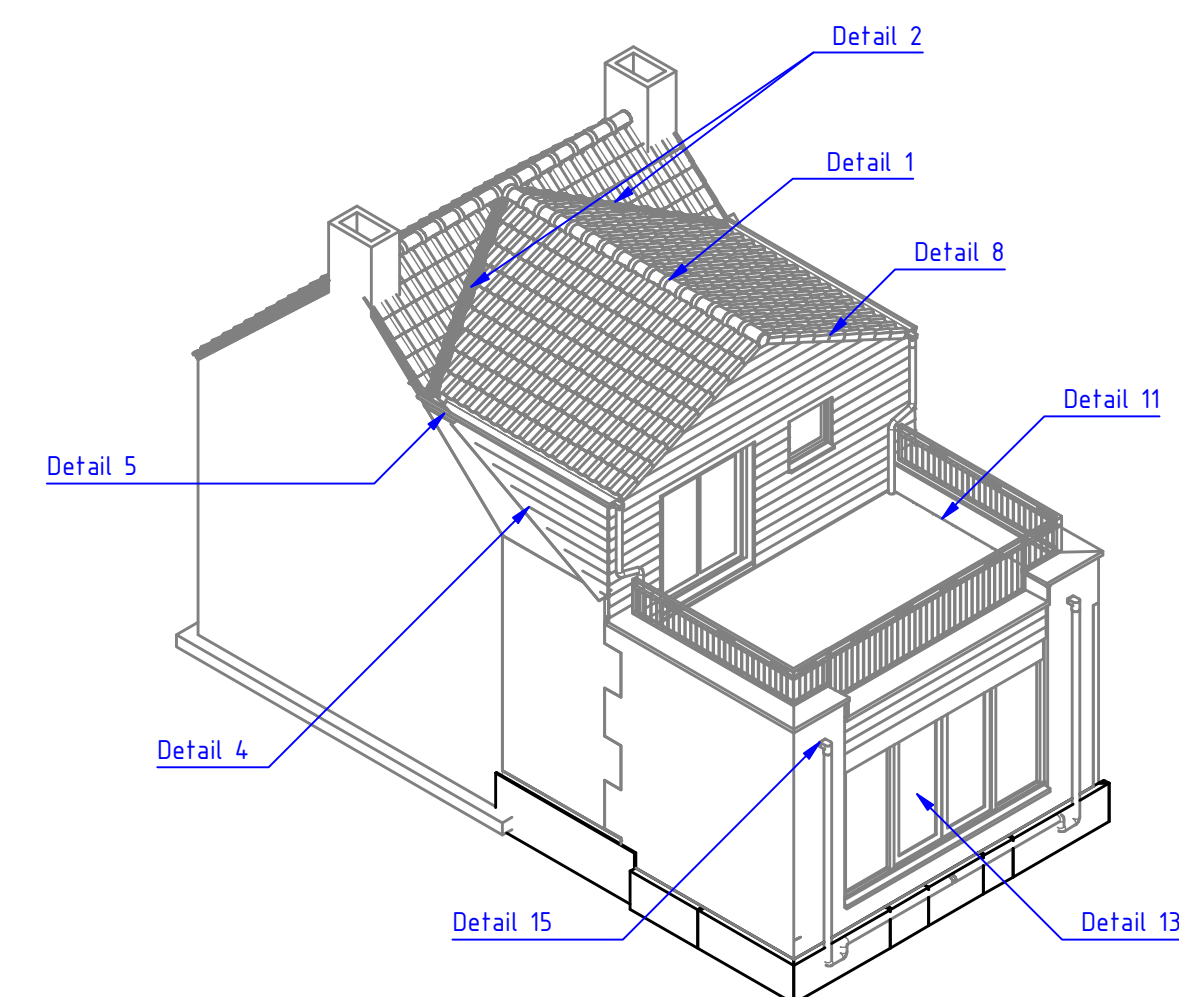


REV	DESCRIPTION	DATE
A	Wateropname badkamer vermeld, aanpassing renvooi, dorpen achterkozijn, dakgoot detail, brandklasse toegevoegd	12-10-2025



A → Bepaling warmteweerstand en berekening dragende constructie zie bijgevoegde documentatie

Warmtedoorgangscoefficient ramen, deuren en kozijnen in scheidingsconstructies $-1,96 \text{ W/m}^2 \cdot \text{K}$

Blad 1: Onderbouw
Blad 2: Bovenbouw
Blad 3: Detaillering
Blad 4: Reling
Blad 5: Rolieringsplan
Blad 6: Brandpreventie