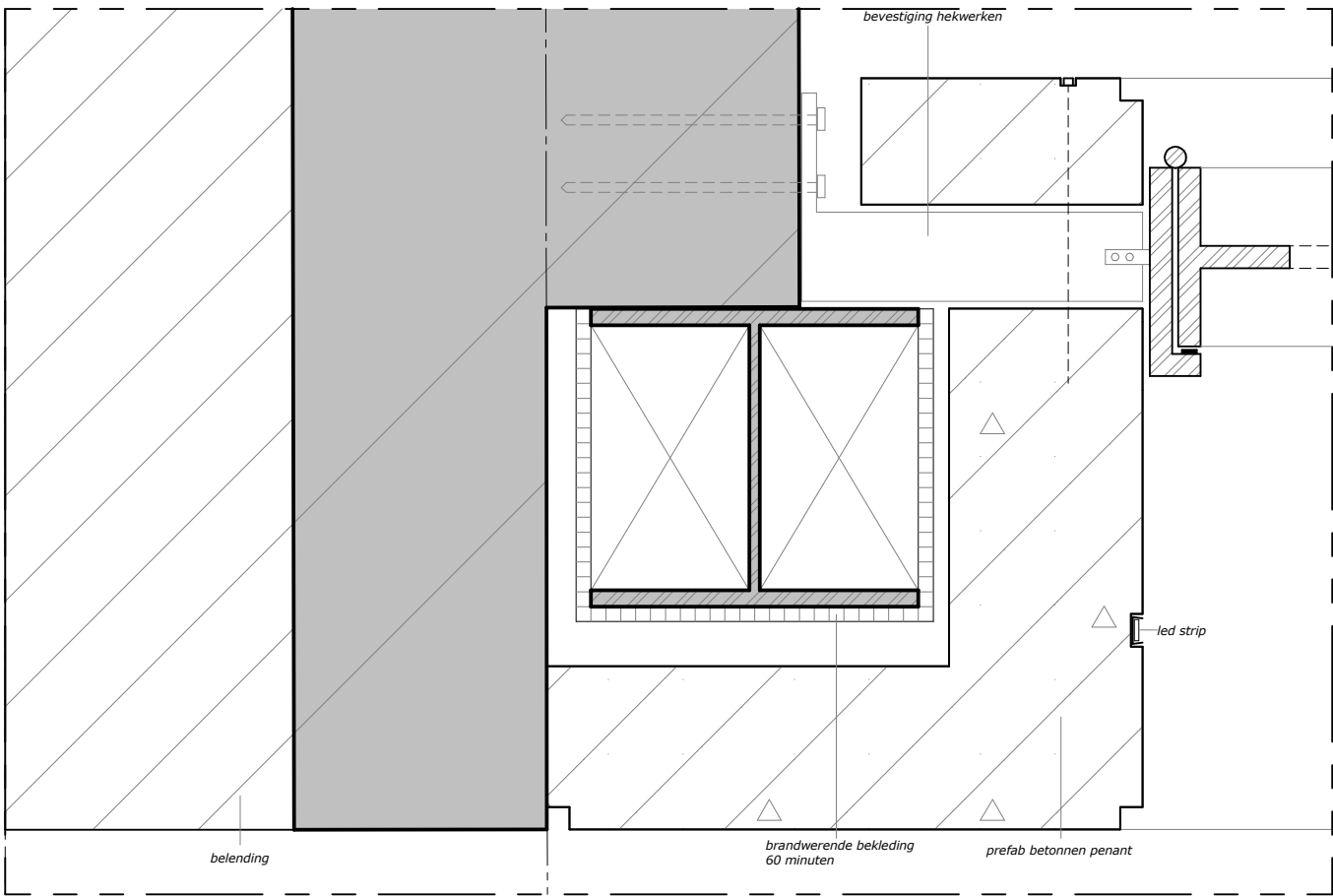
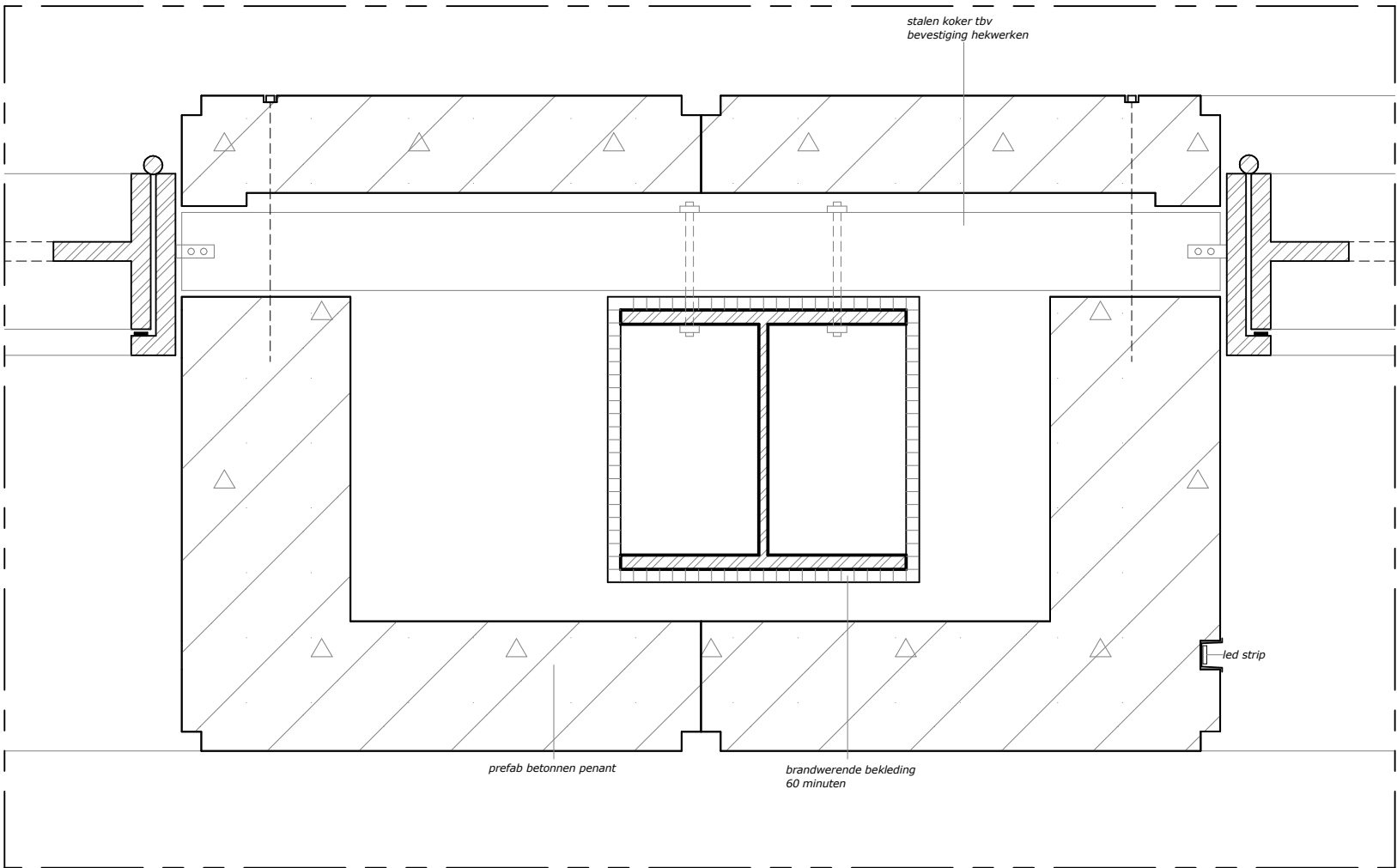
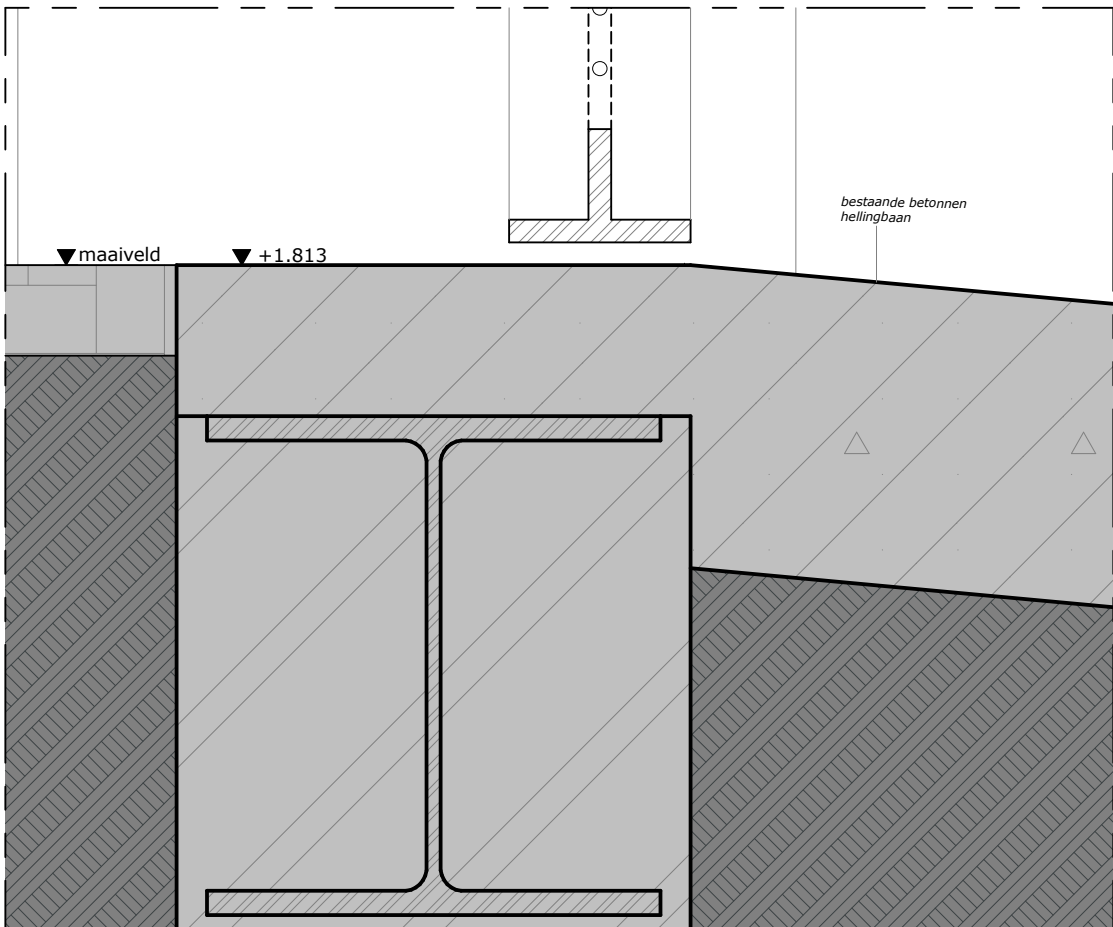
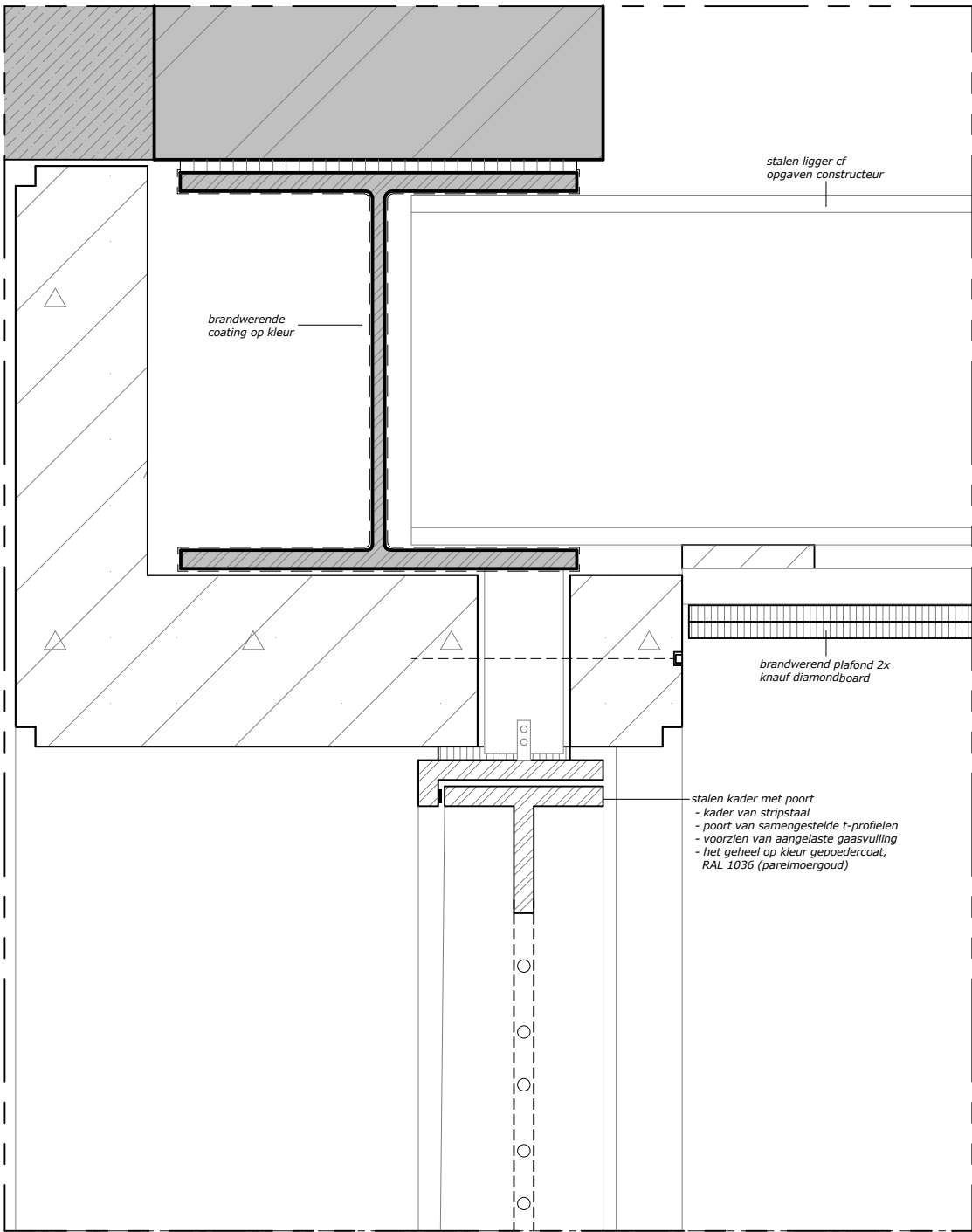
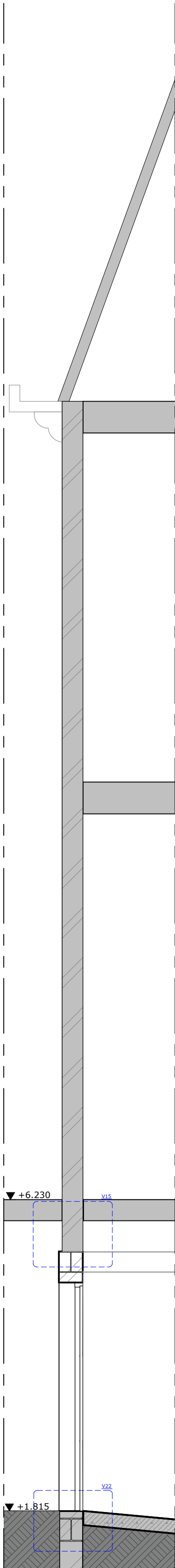
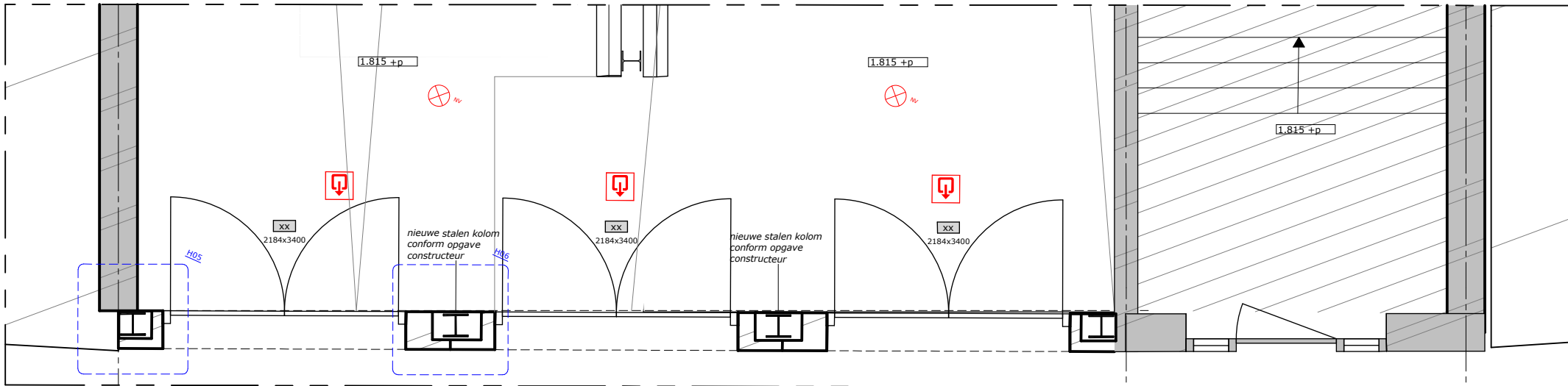
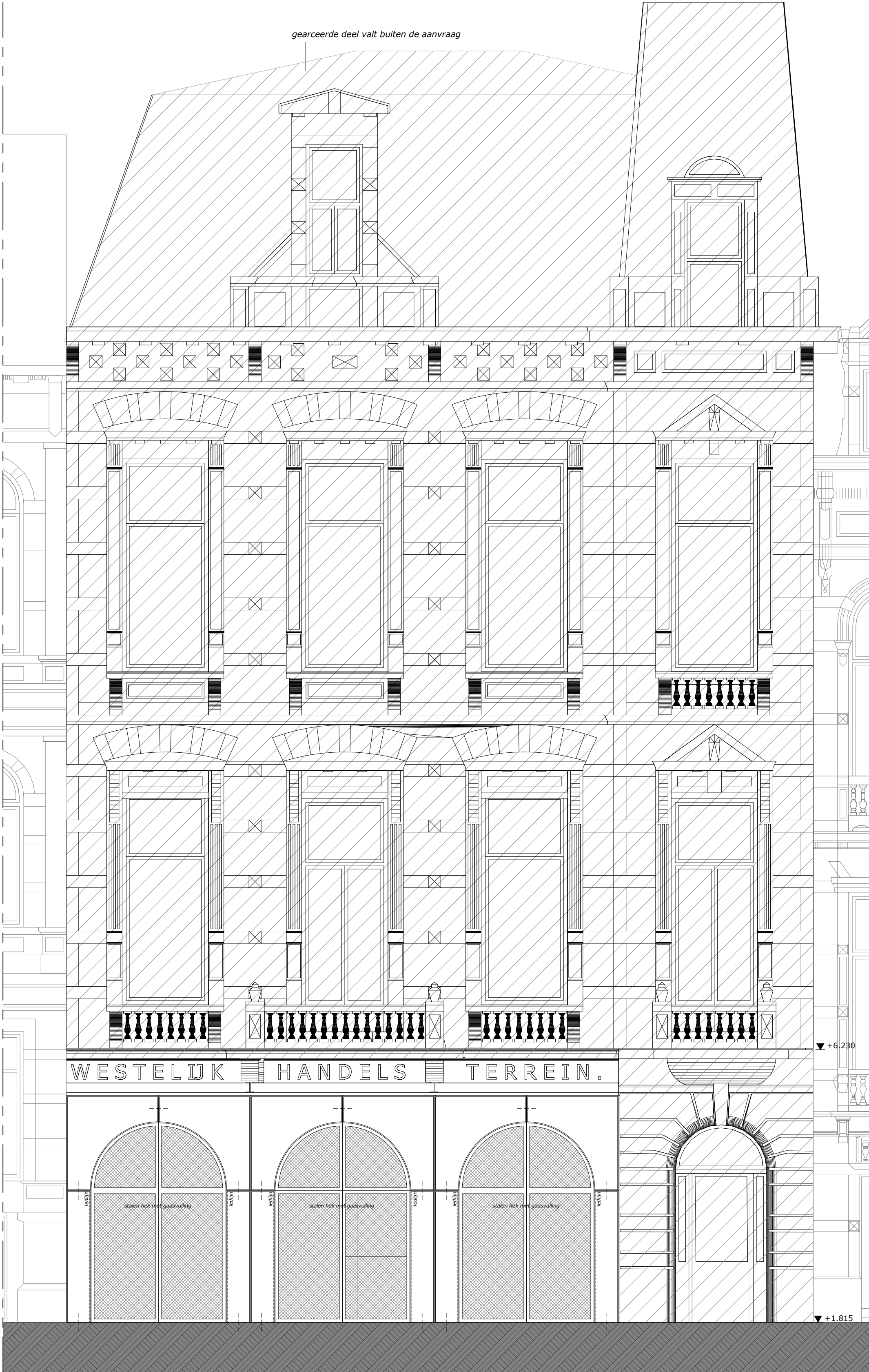


fragment entree



DEFINITIEF ONTWERP

178 Westelijk Handelsterrein

NIEUWE TOESTAND

3.5.1 fragment entree

formaat: A1

schaal: 1:50, 1:5

datum: 18-7-2024

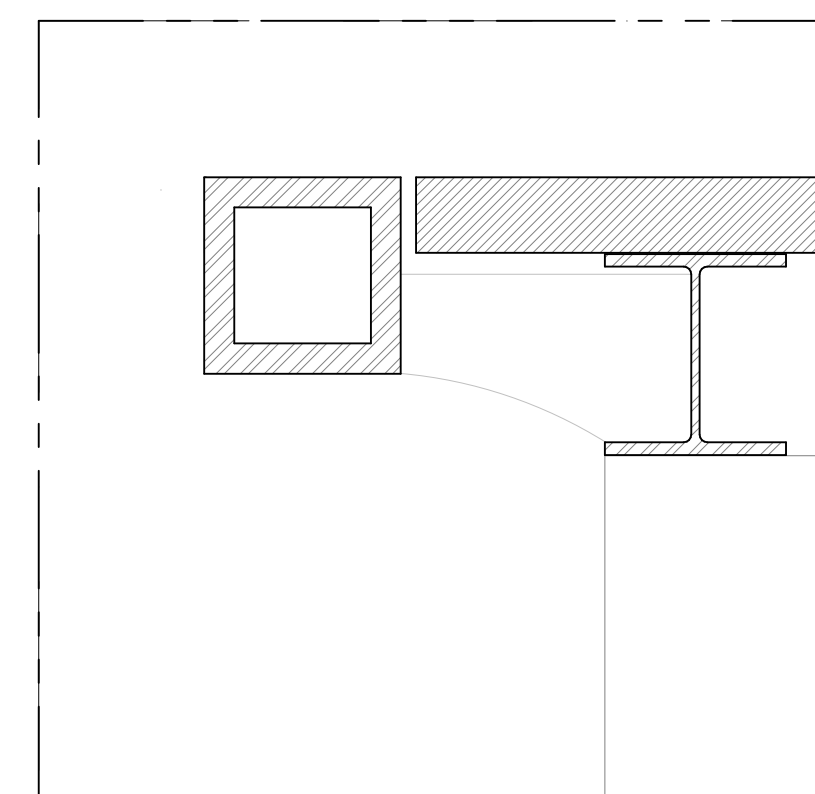
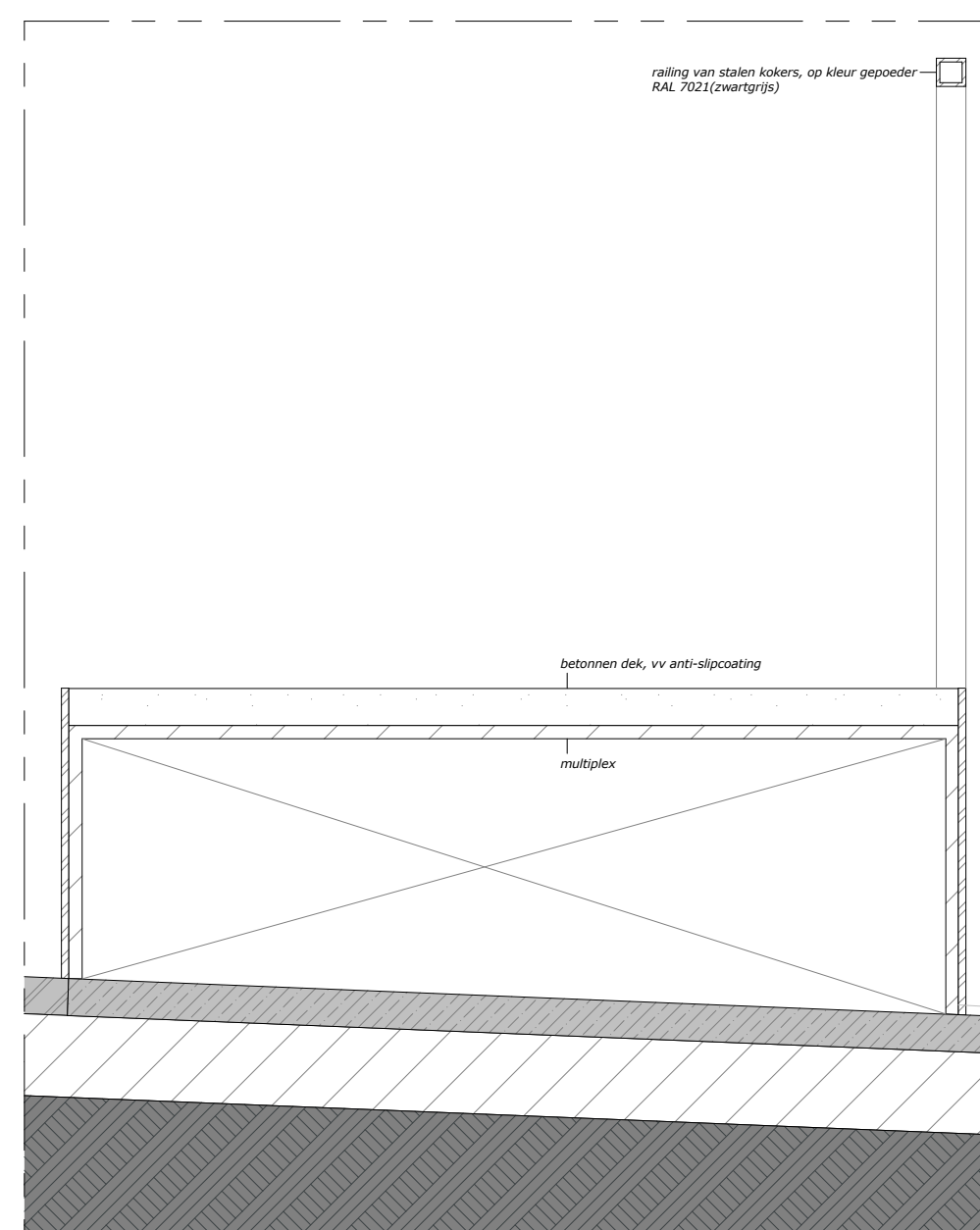
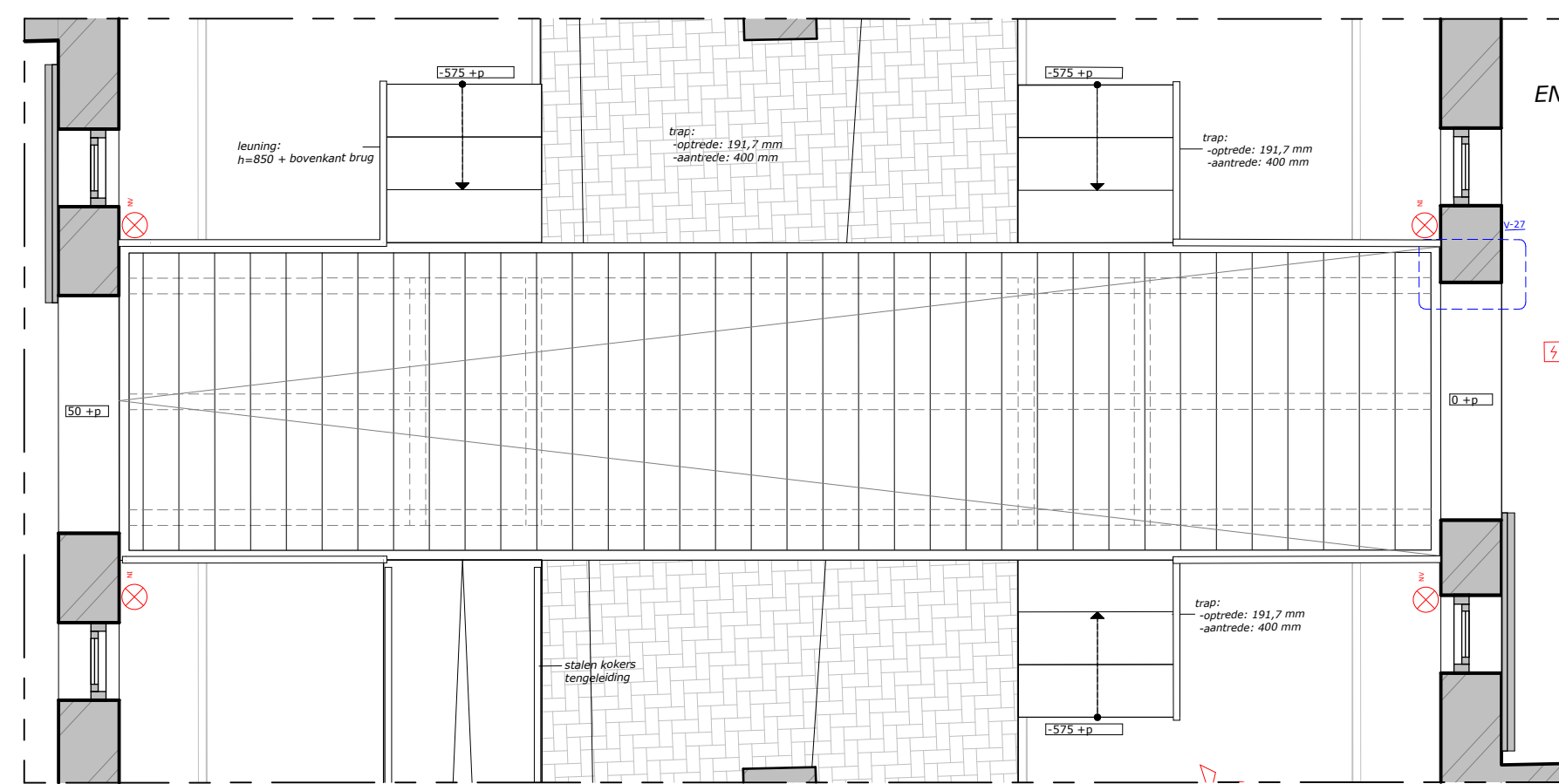
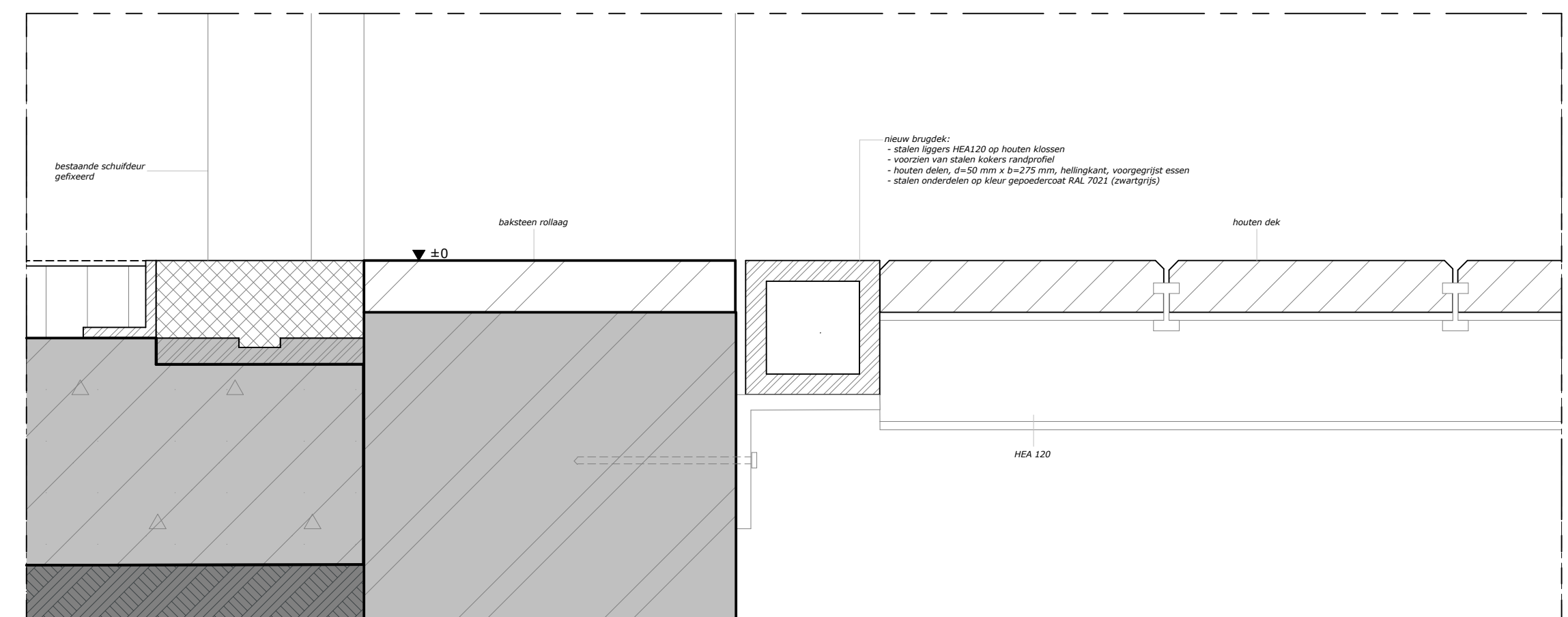
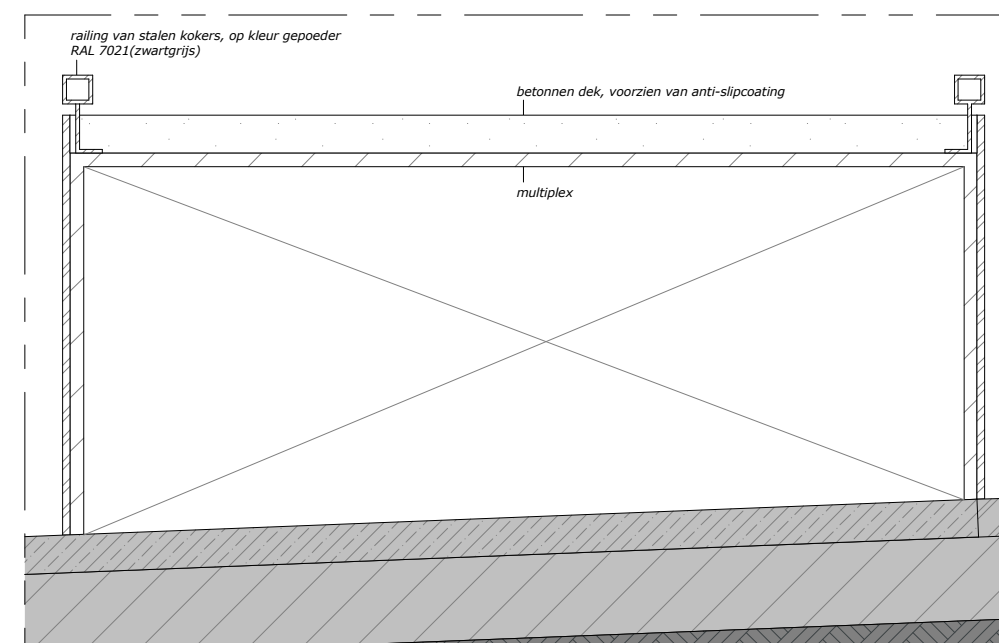
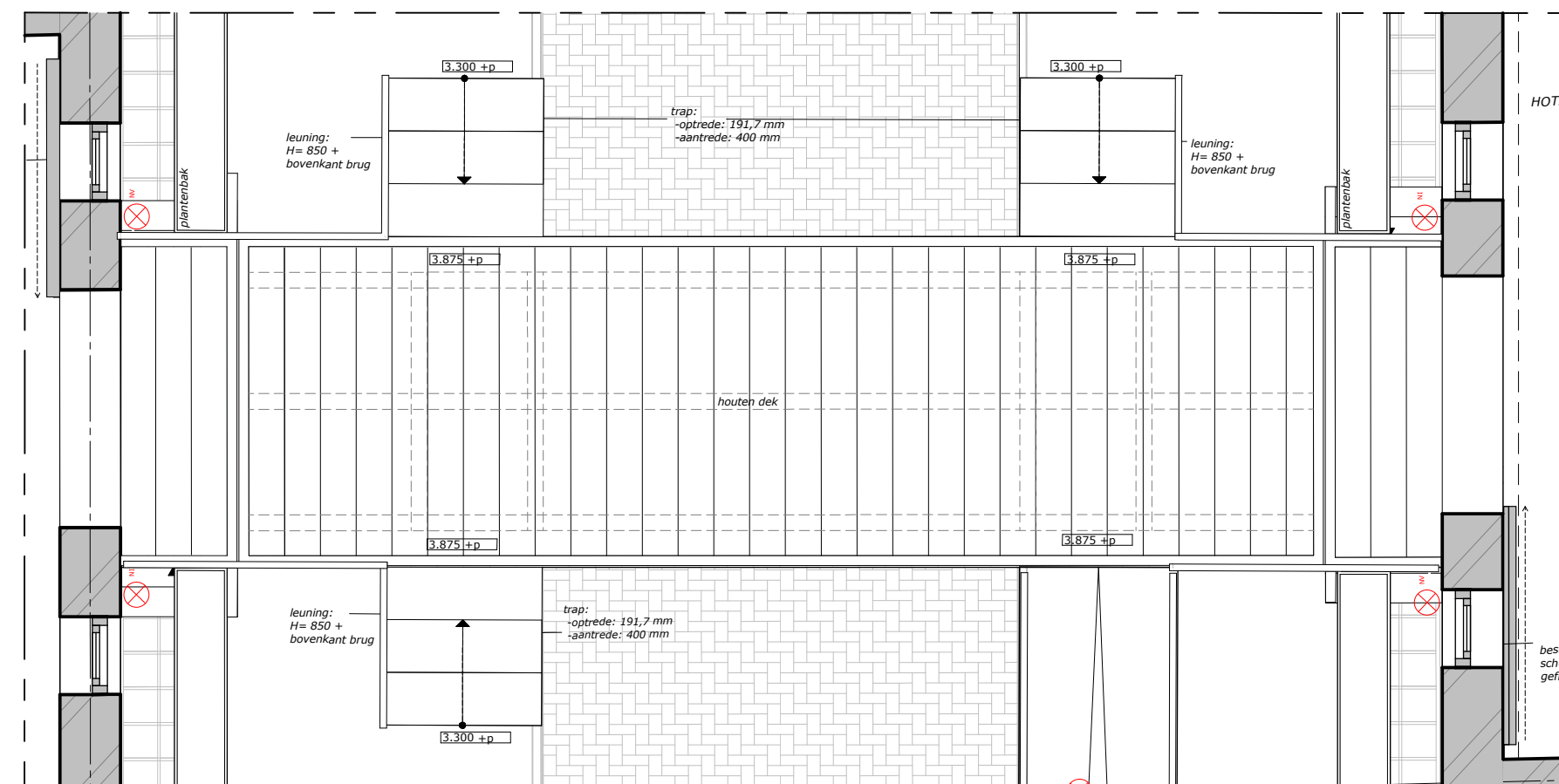
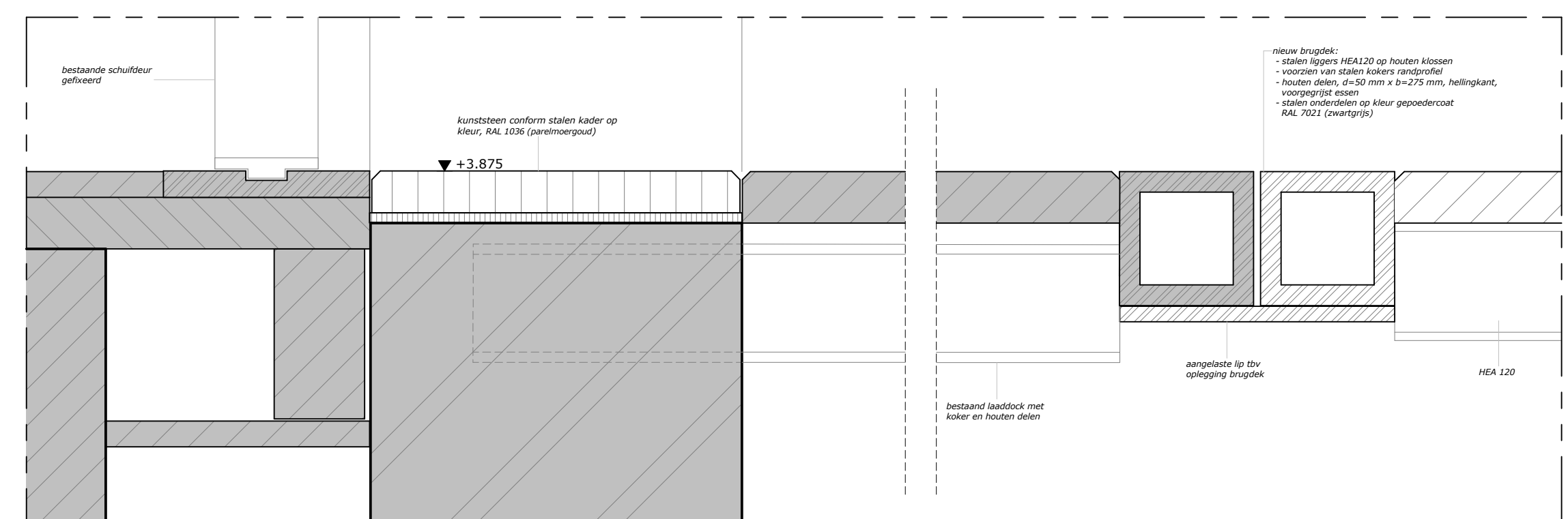
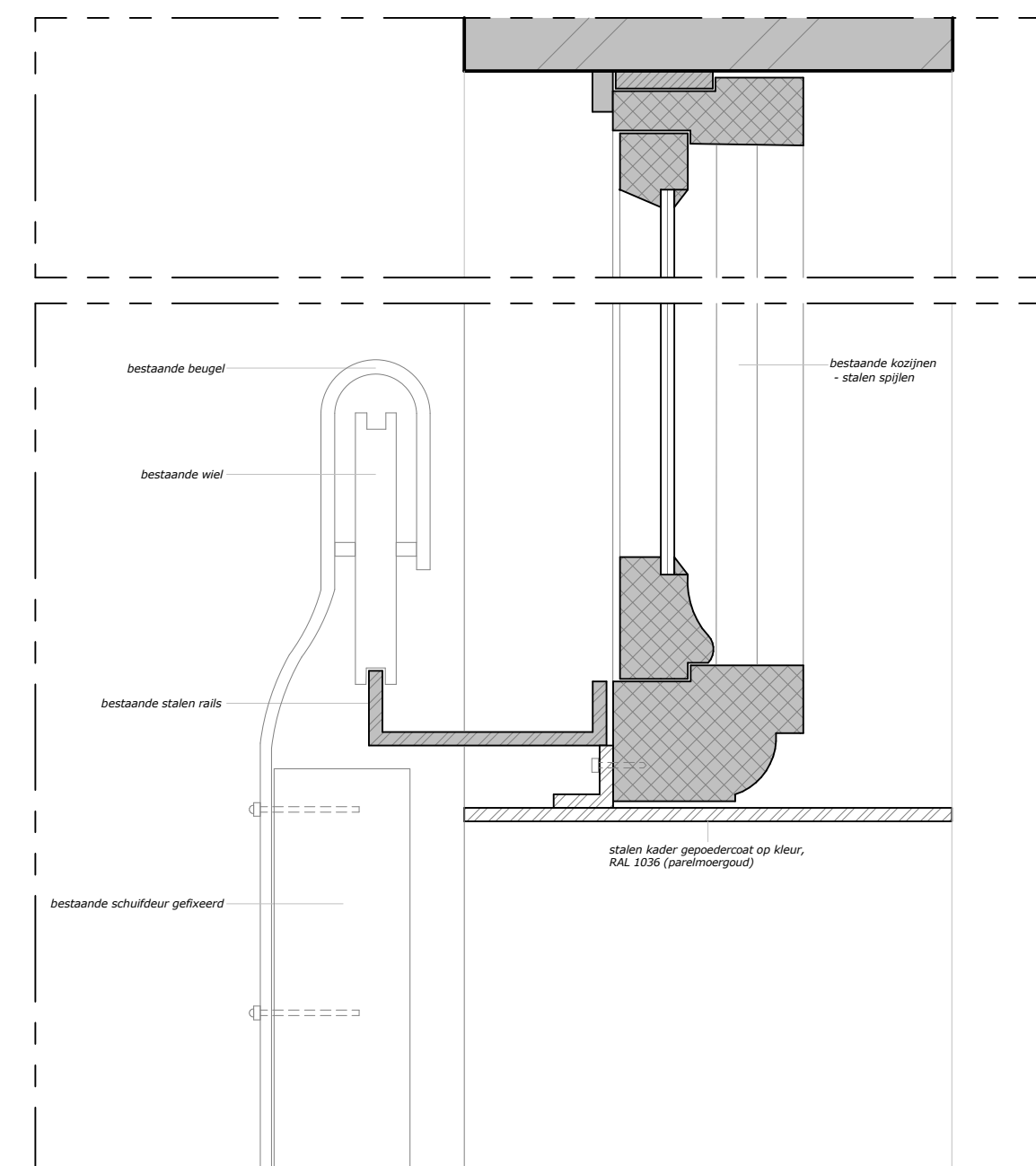
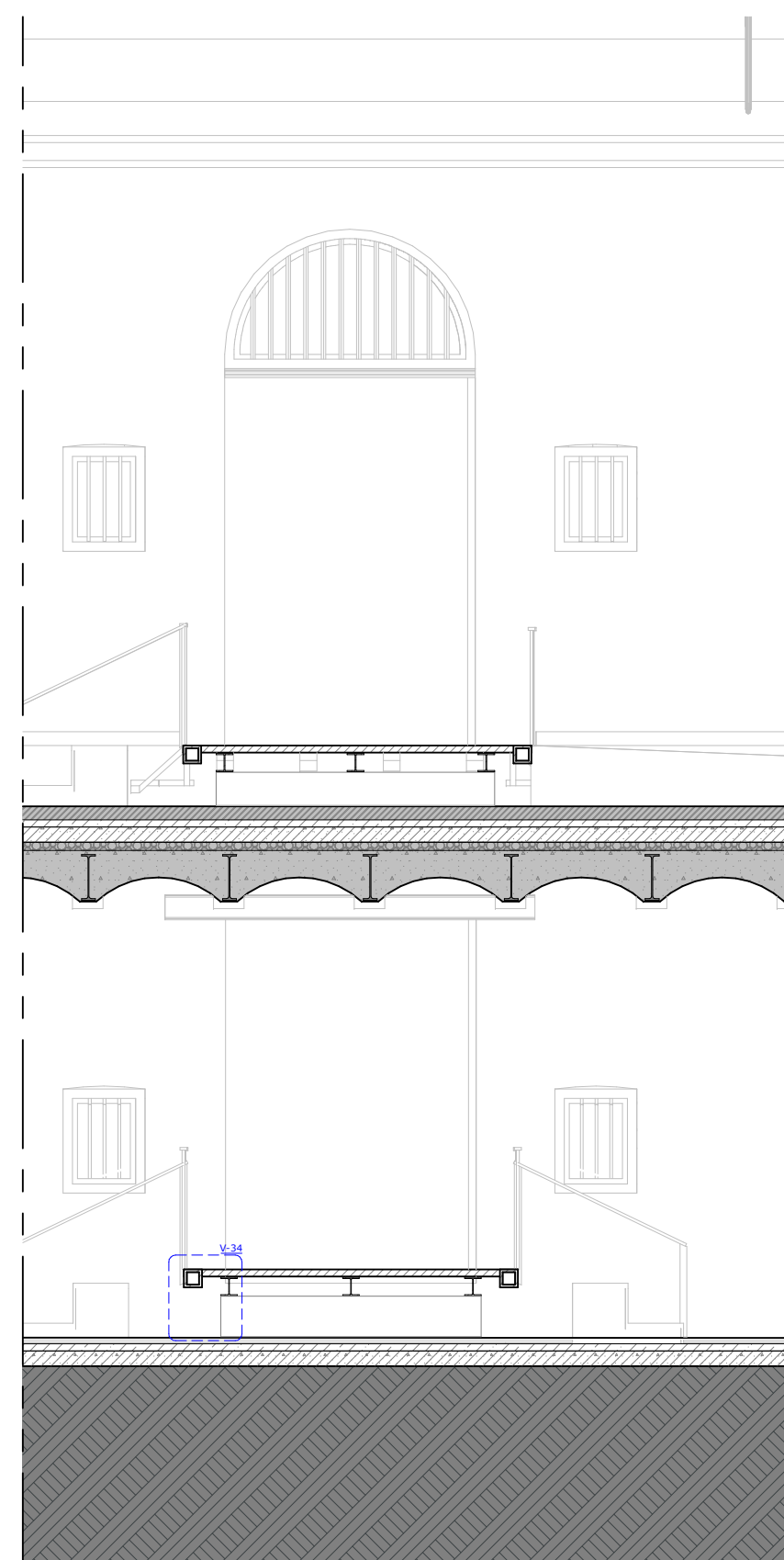
wijz. A:

wijz. B:

wijz. C:

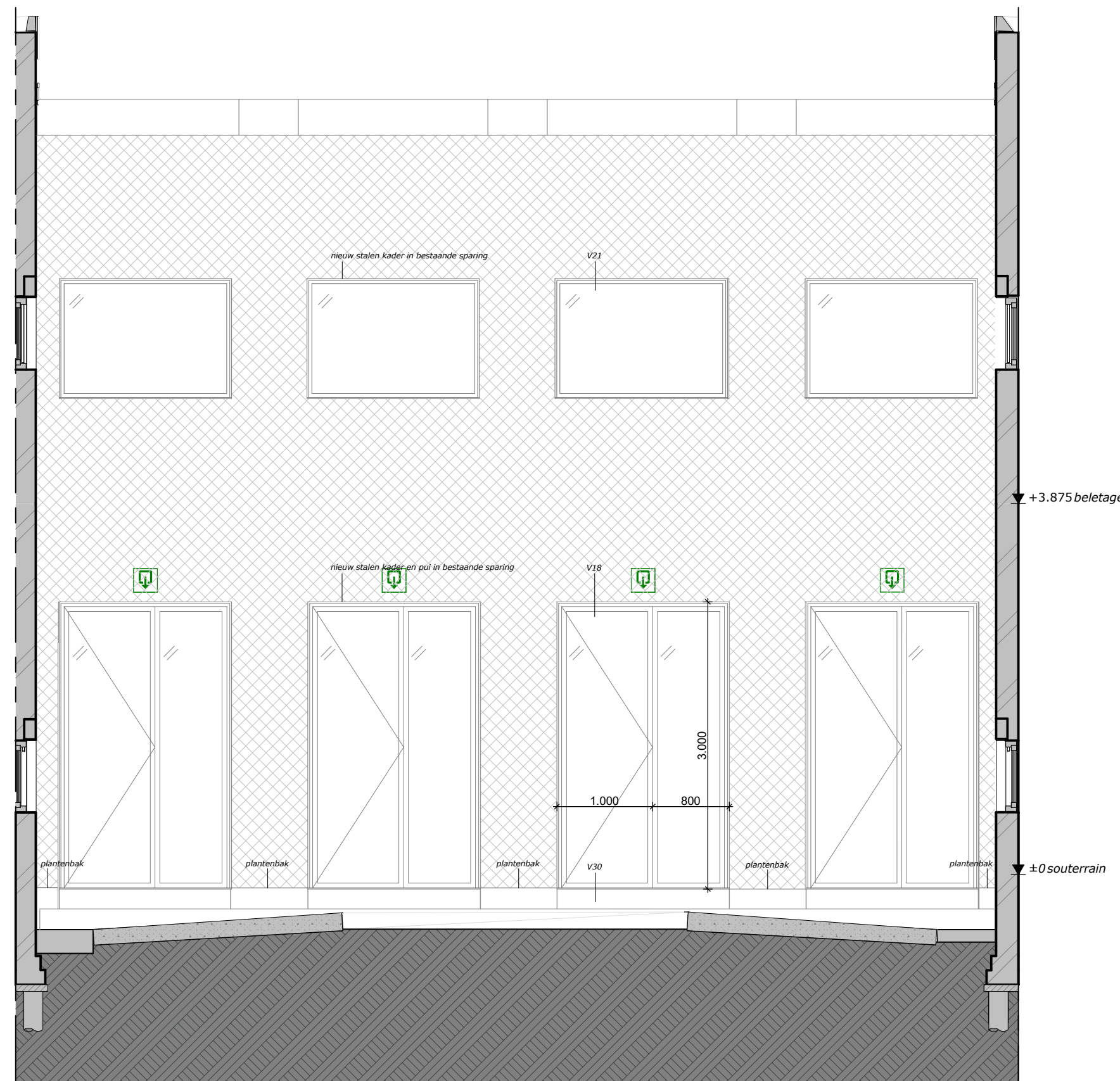


fragment doorsnede/aanzicht bruggen - schaal 1:50

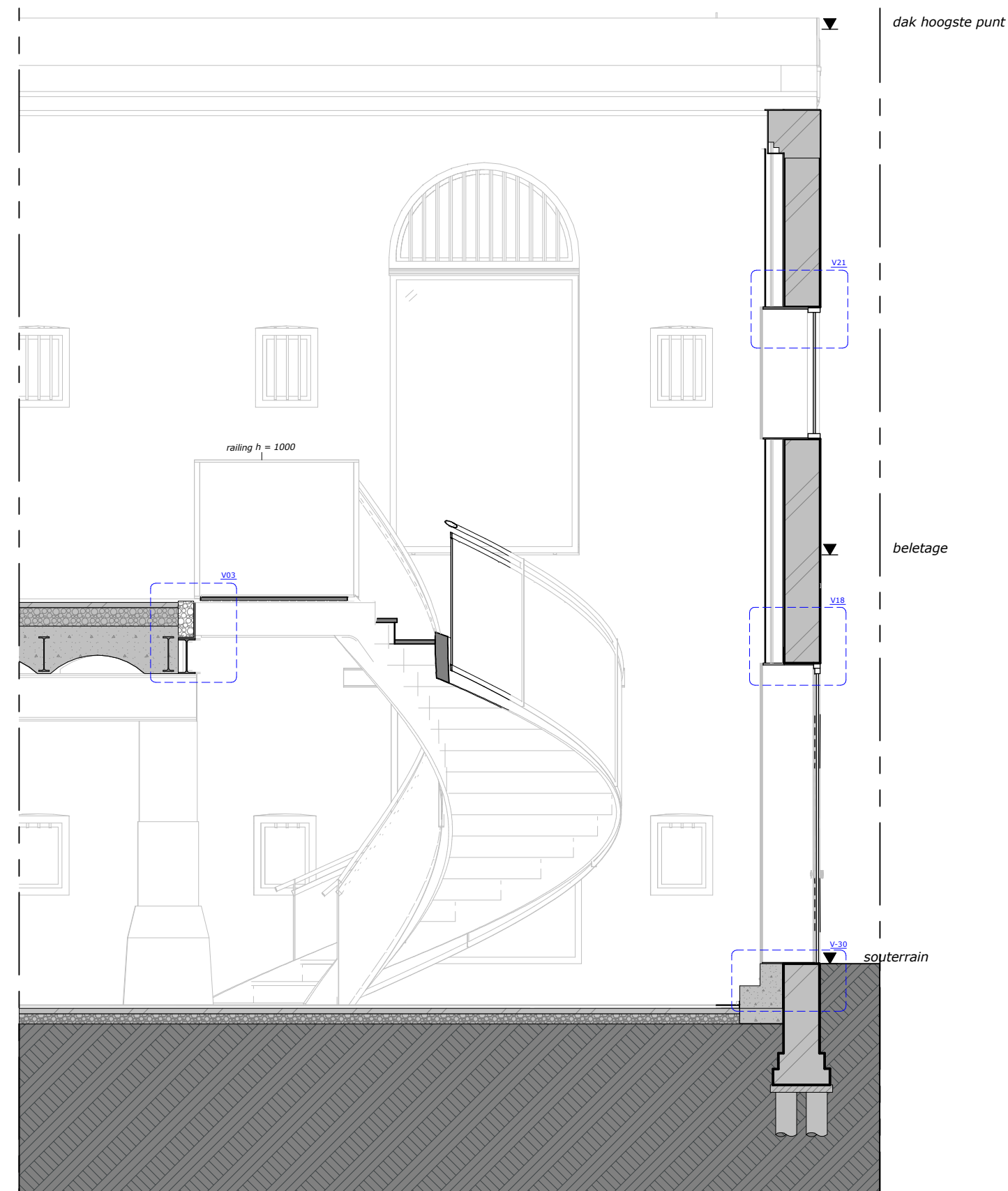




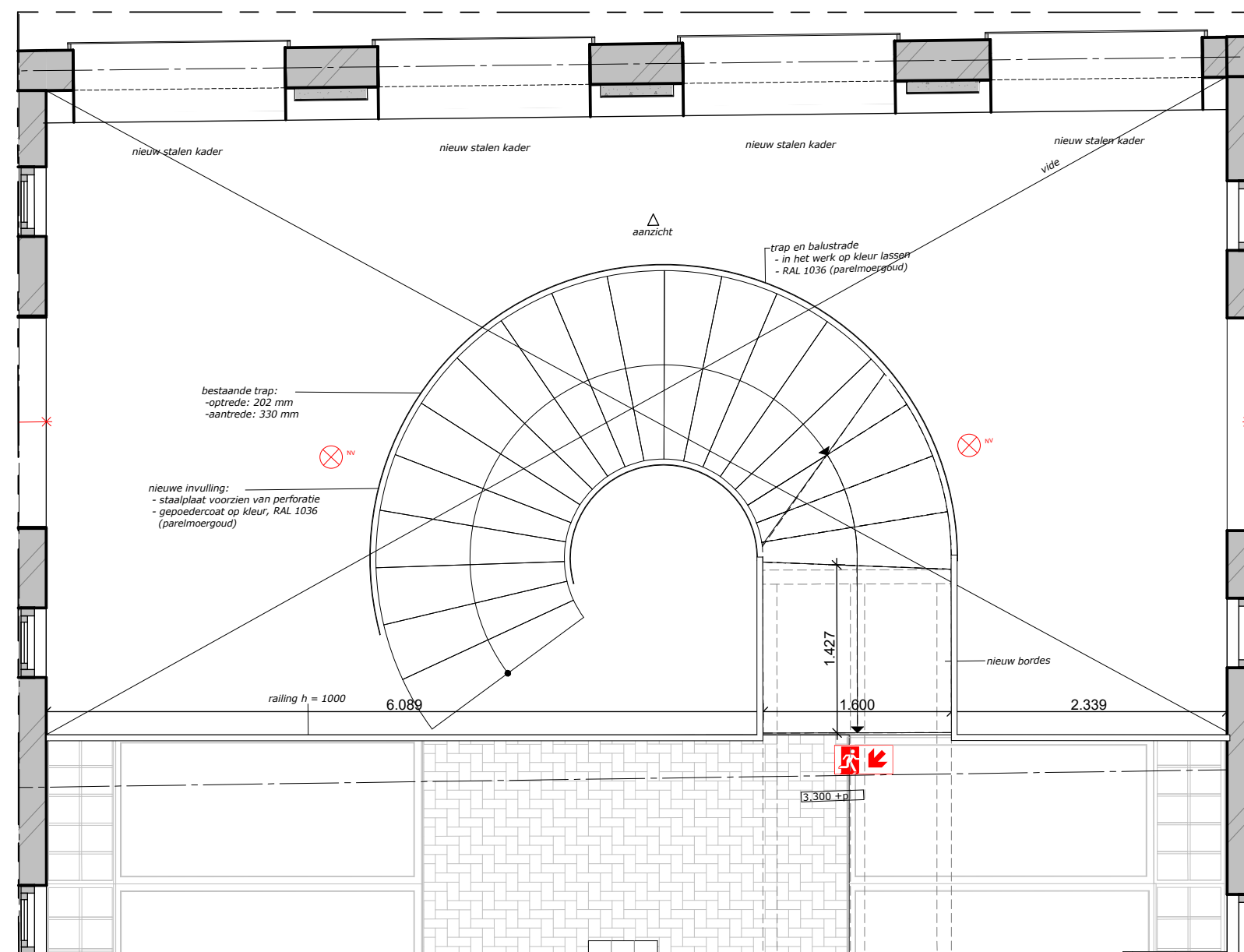
fragment vide middenstraat



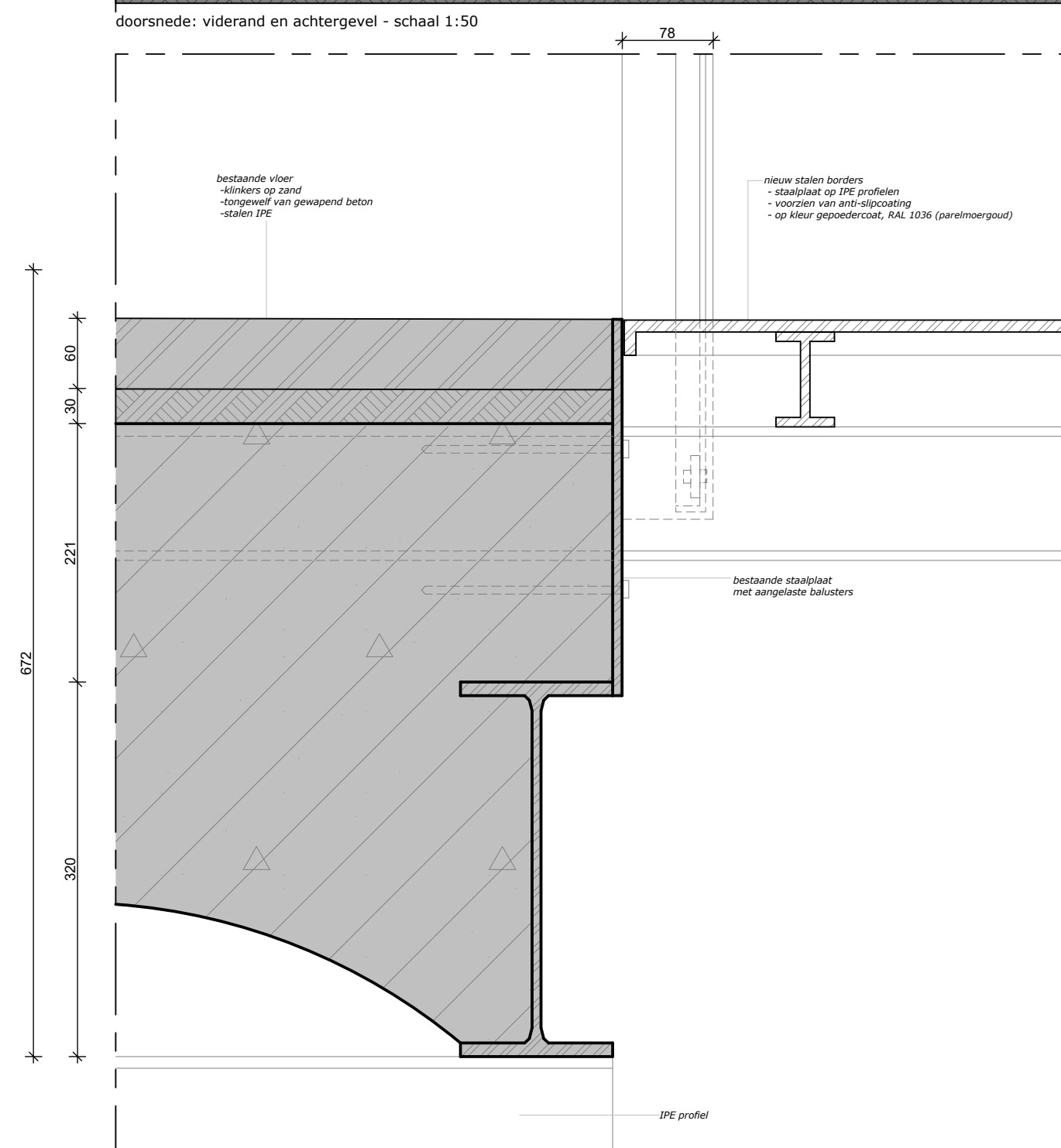
doorsnede: achtergevel - schaal 1:50



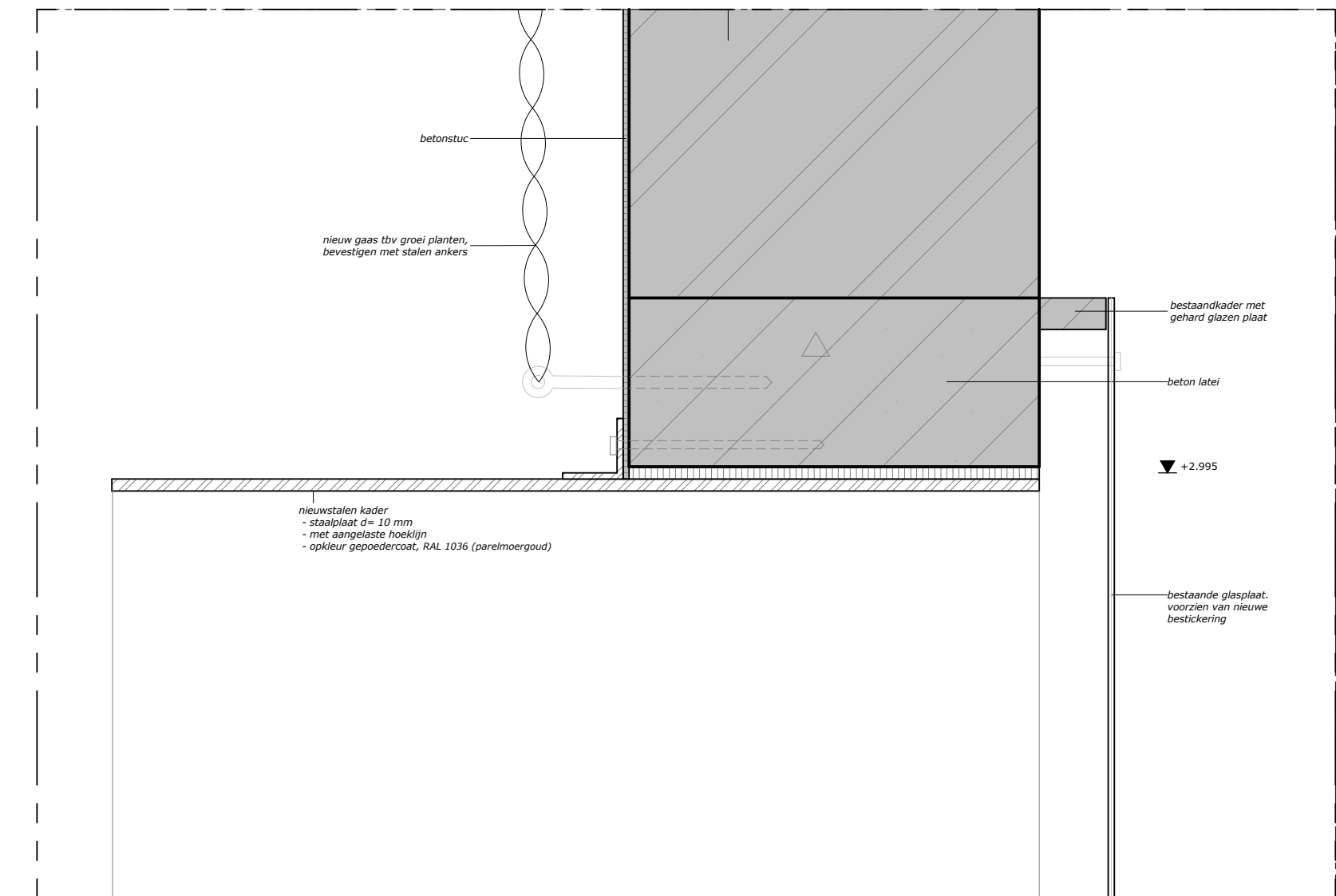
doorsnede: viderand en achtergevel - schaal 1:50



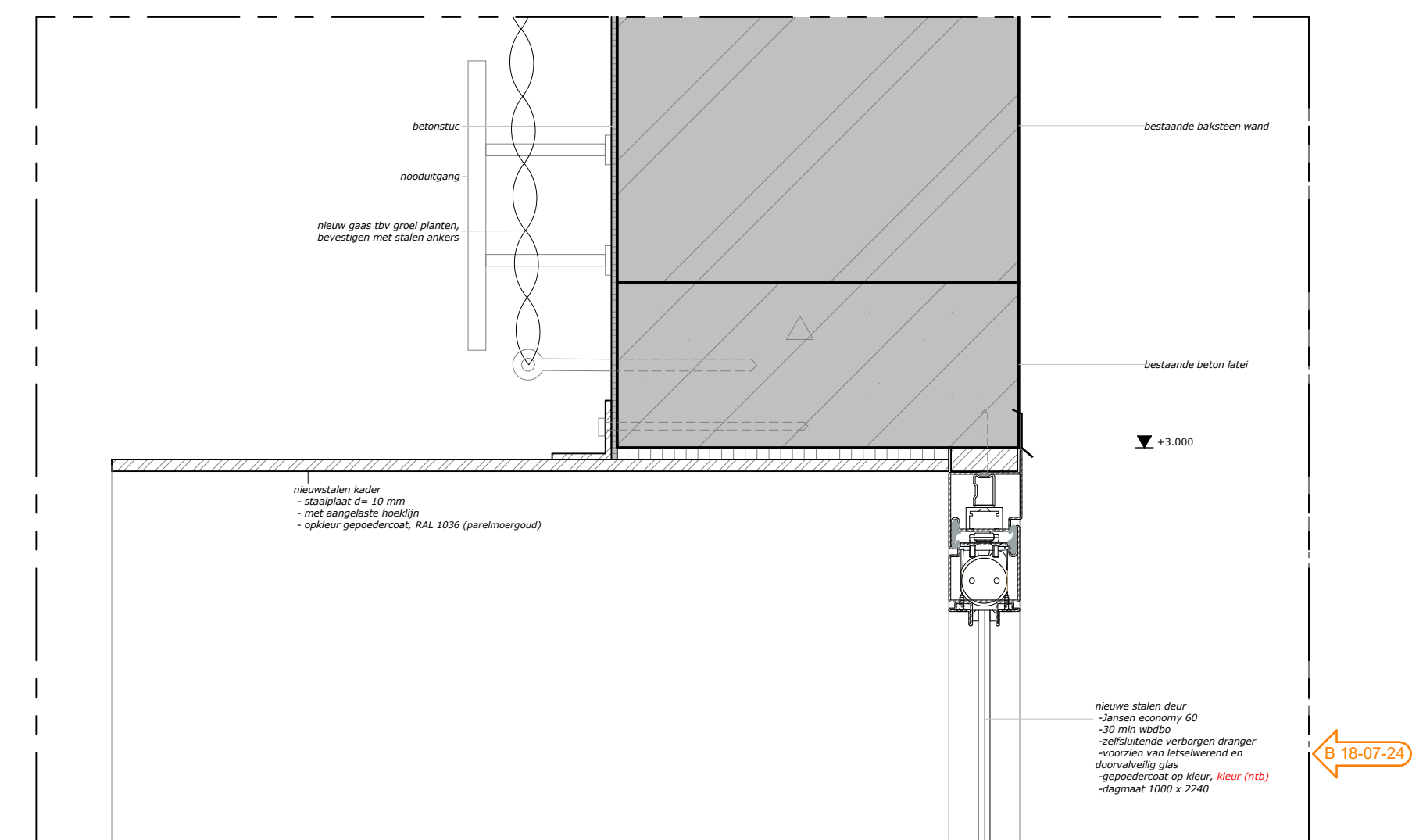
fragment plattegrond: vide binnenstraat - schaal 1:50



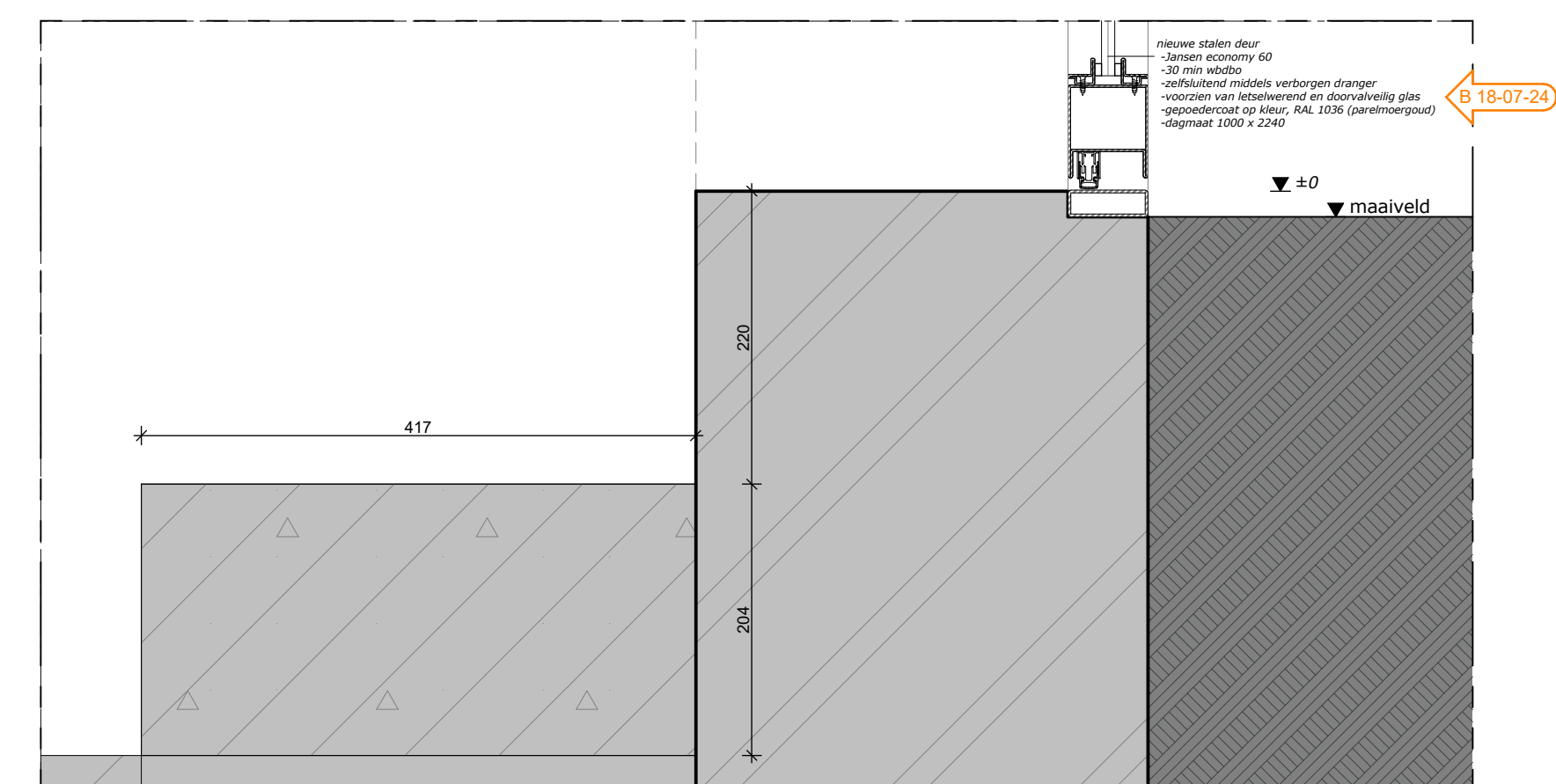
detail V03: viderand - schaal 1:5



detail V21: verticaal detail tpv raamsparing in achtergevel - schaal 1:5



detail V18: verticaal detail tpv pui in achtergevel - schaal 1:5



details V30: achtergevel middenstraat - schaal 1:5



impressie



terugliggende wand met stuc- en sauswerk op RAL 7021 (zwartgrijs)

+8.859 dak(hoogte)

kunstwerk over hele wand

bank gemaakt van houten (viber)pijlen

+3.875 beelagte

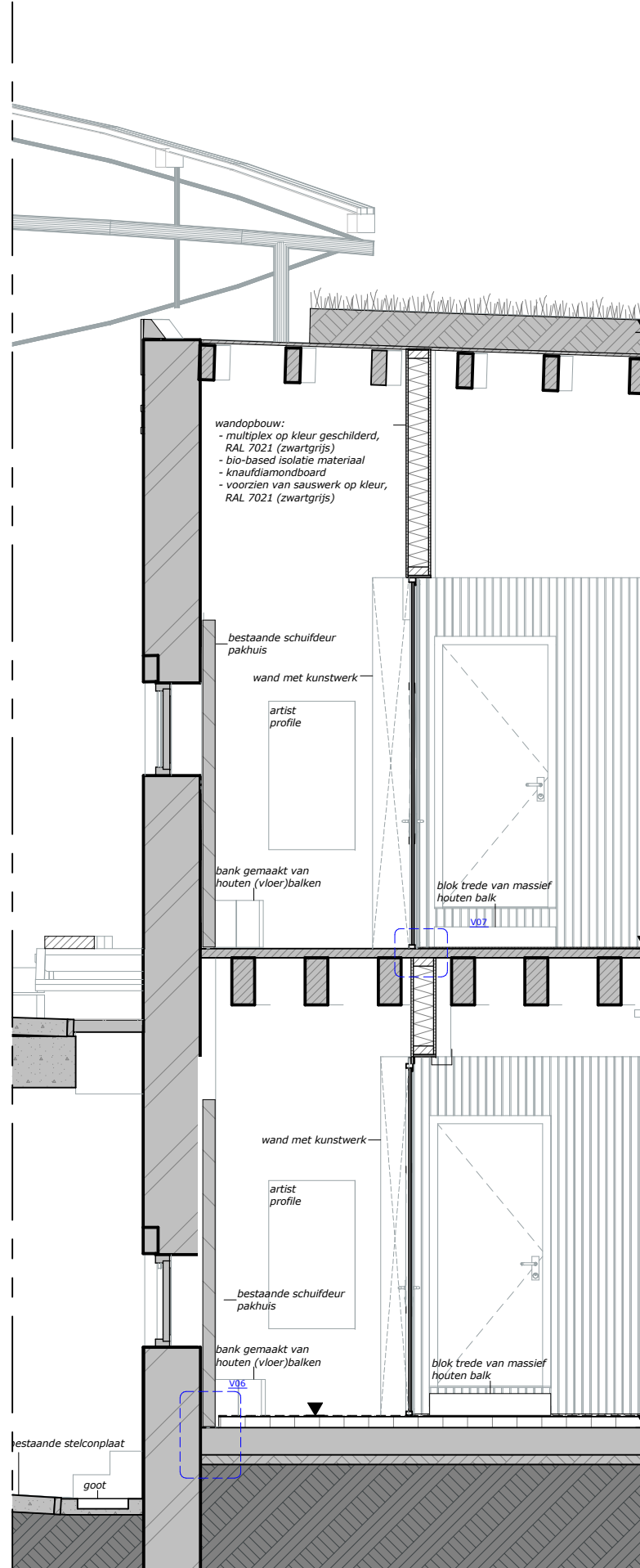
terugliggende wand met stuc- en sauswerk op RAL 7021 (zwartgrijs)

kunstwerk over hele wand

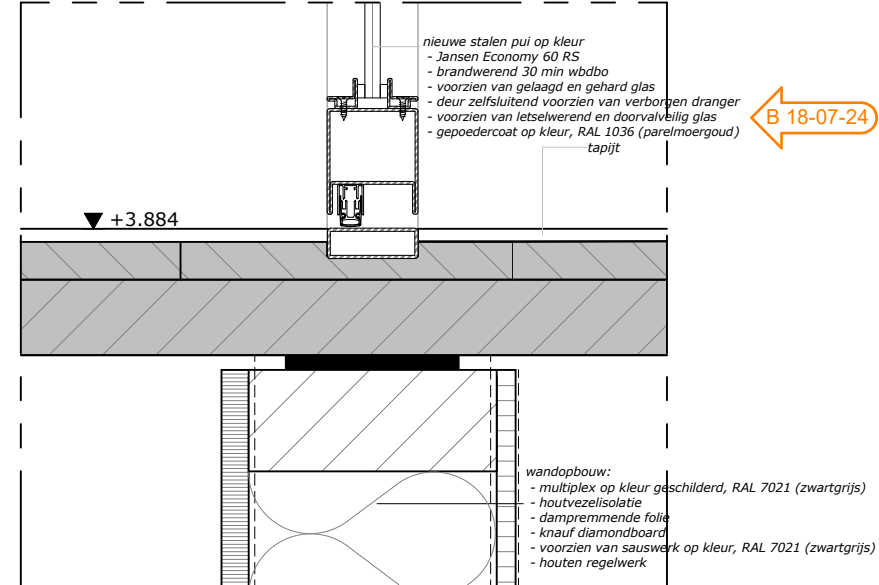
bank gemaakt van houten (viber)pijlen

+0 souterrain

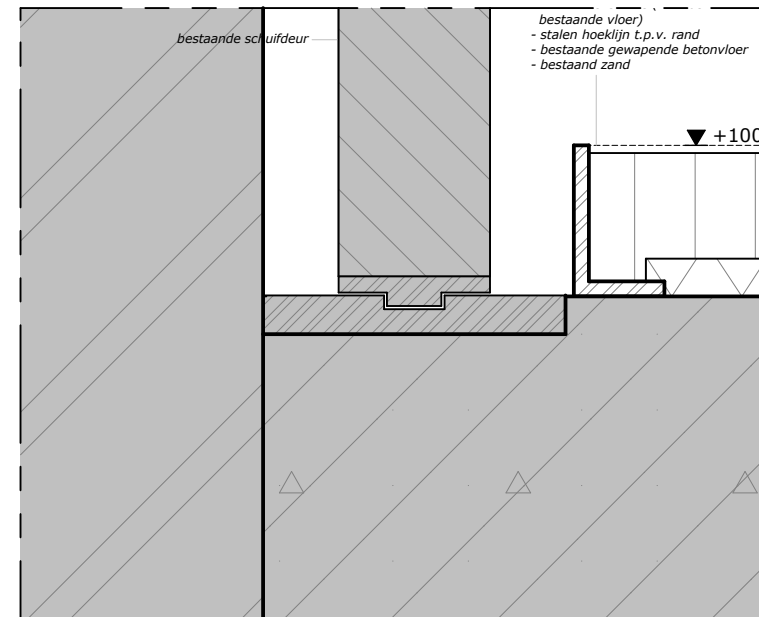
doorsnede: entree pakhuizen- schaal 1:50



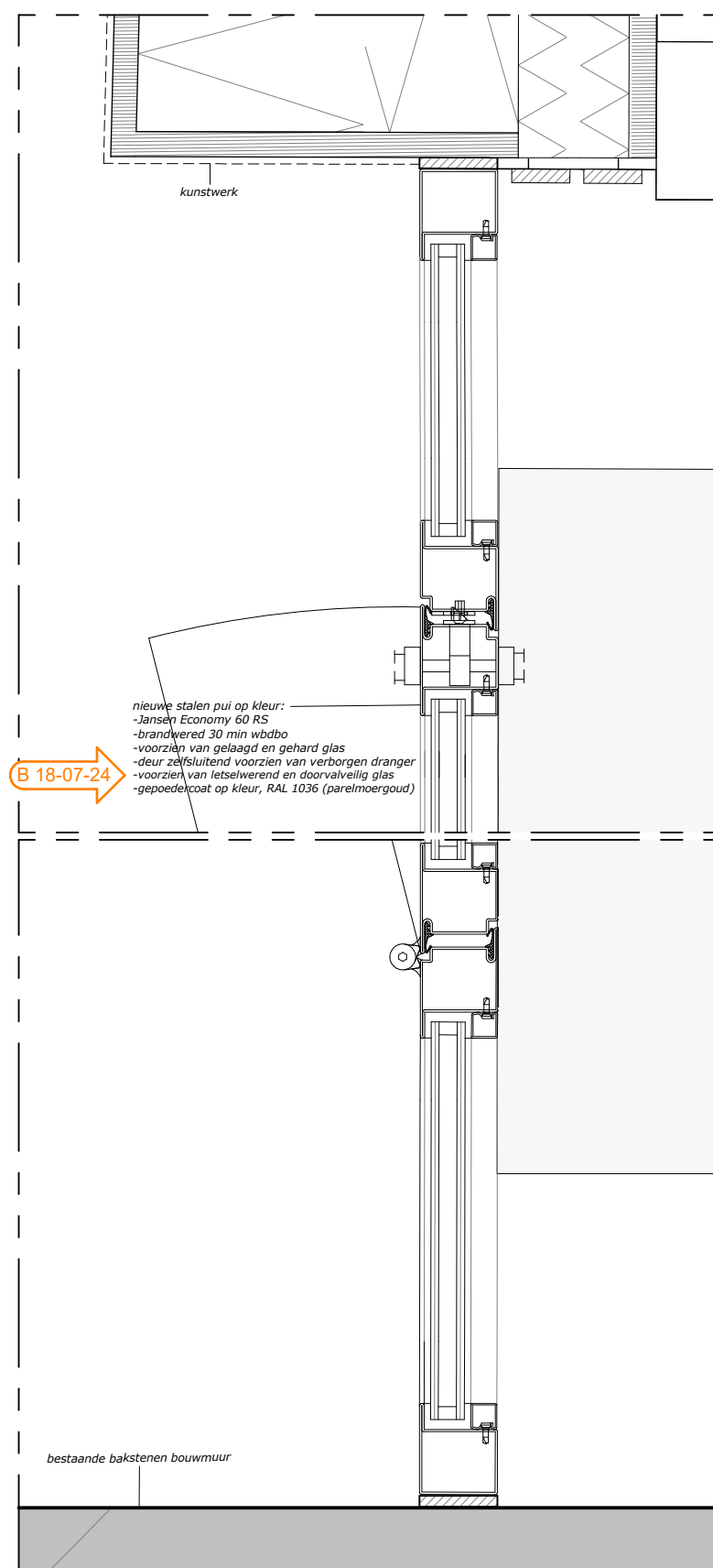
doorsnede: entree pakhuizen - schaal 1:50



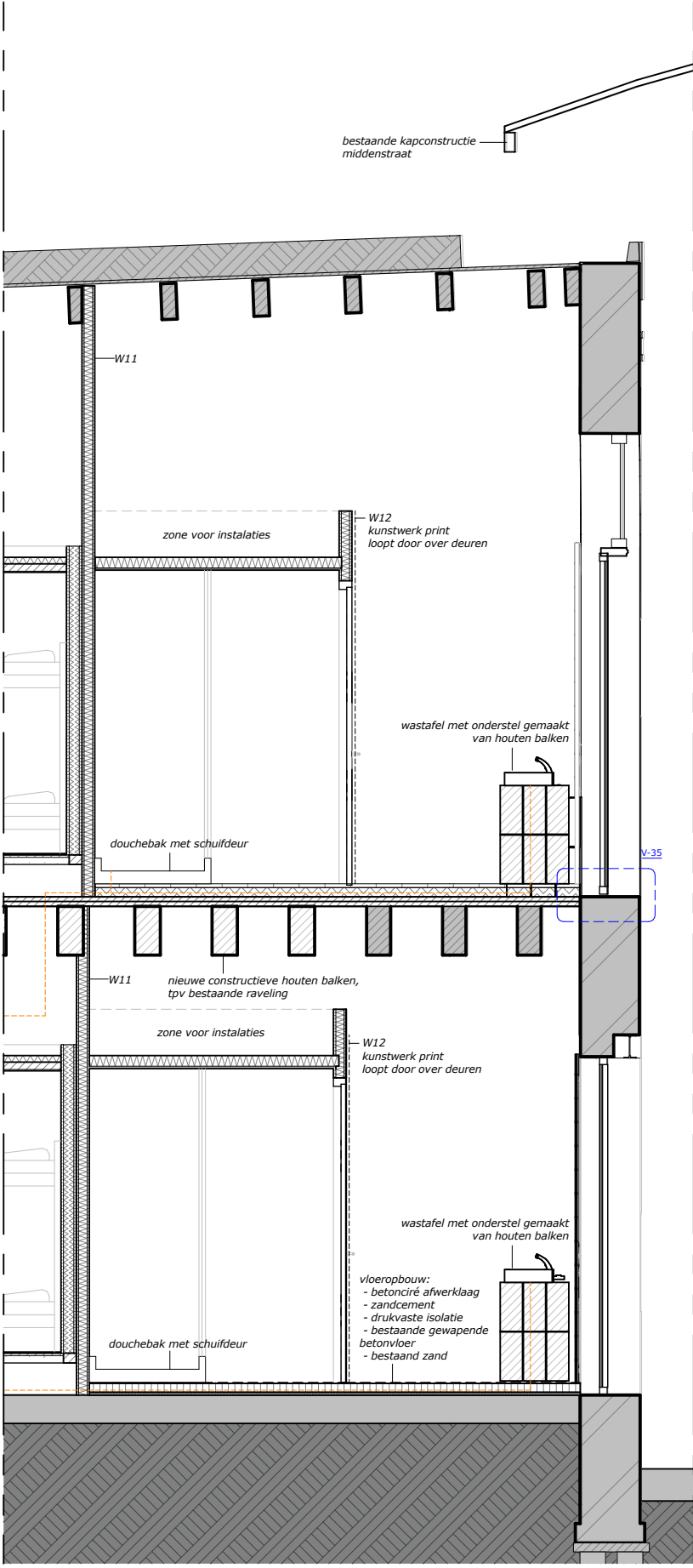
detail V07: aansluiting wand en pui op bestaande vloer - schaal 1:5



detail V06: entree pakhuis - schaal 1:5



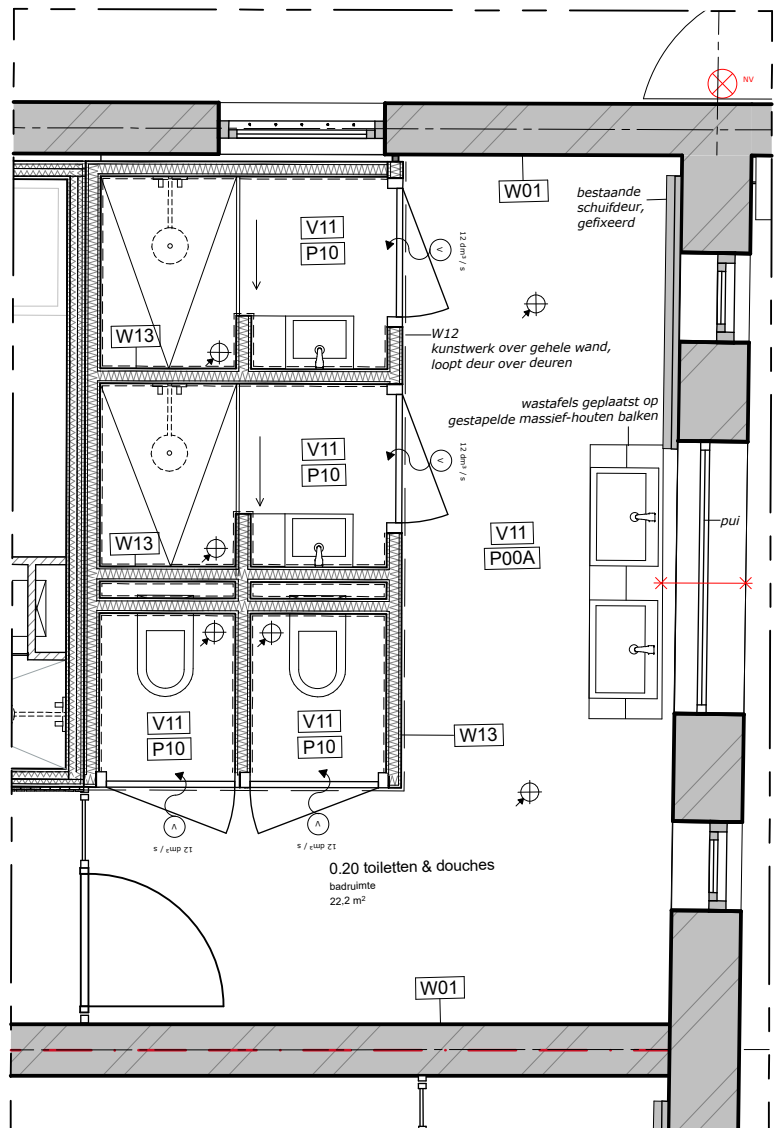
detail V31: entree deur gangen - schaal 1:5



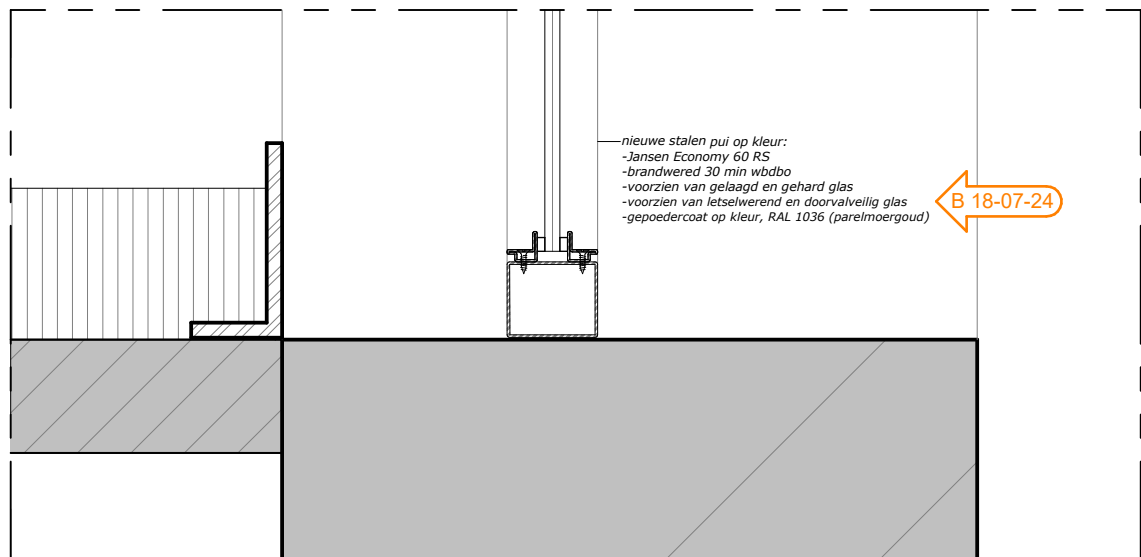
doorsnede: badkamer - schaal 1-50



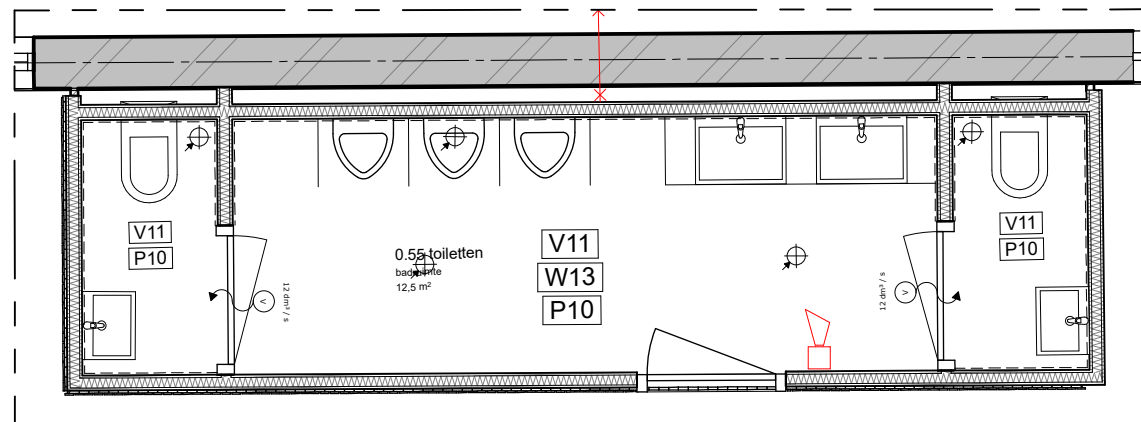
Impressie - 1:3,92



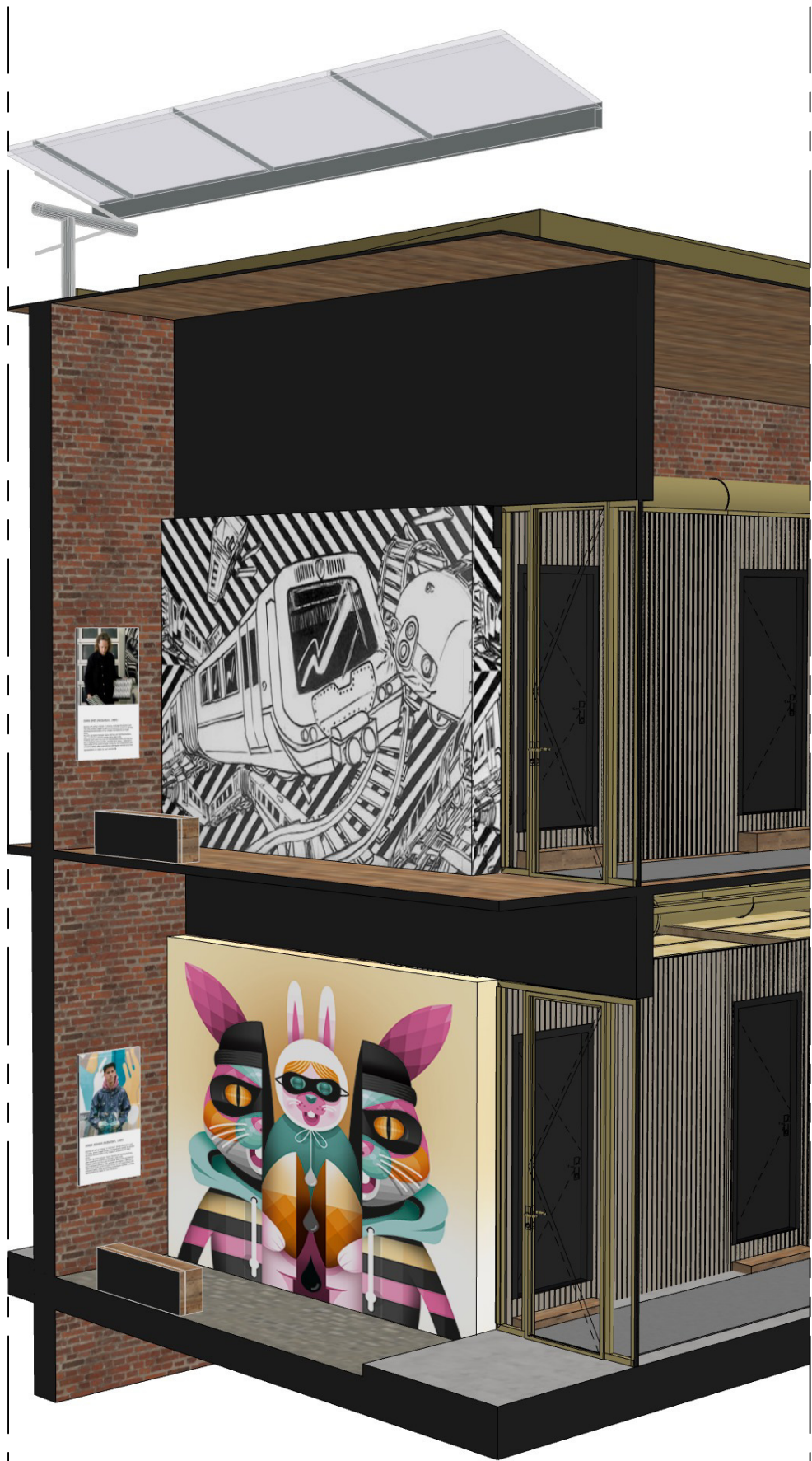
plattegrond: badkamer - schaal 1:50



detail V35: aansluiting pui badkamer - schaal 1:5



plattegrond: badkamer - schaal 1:50



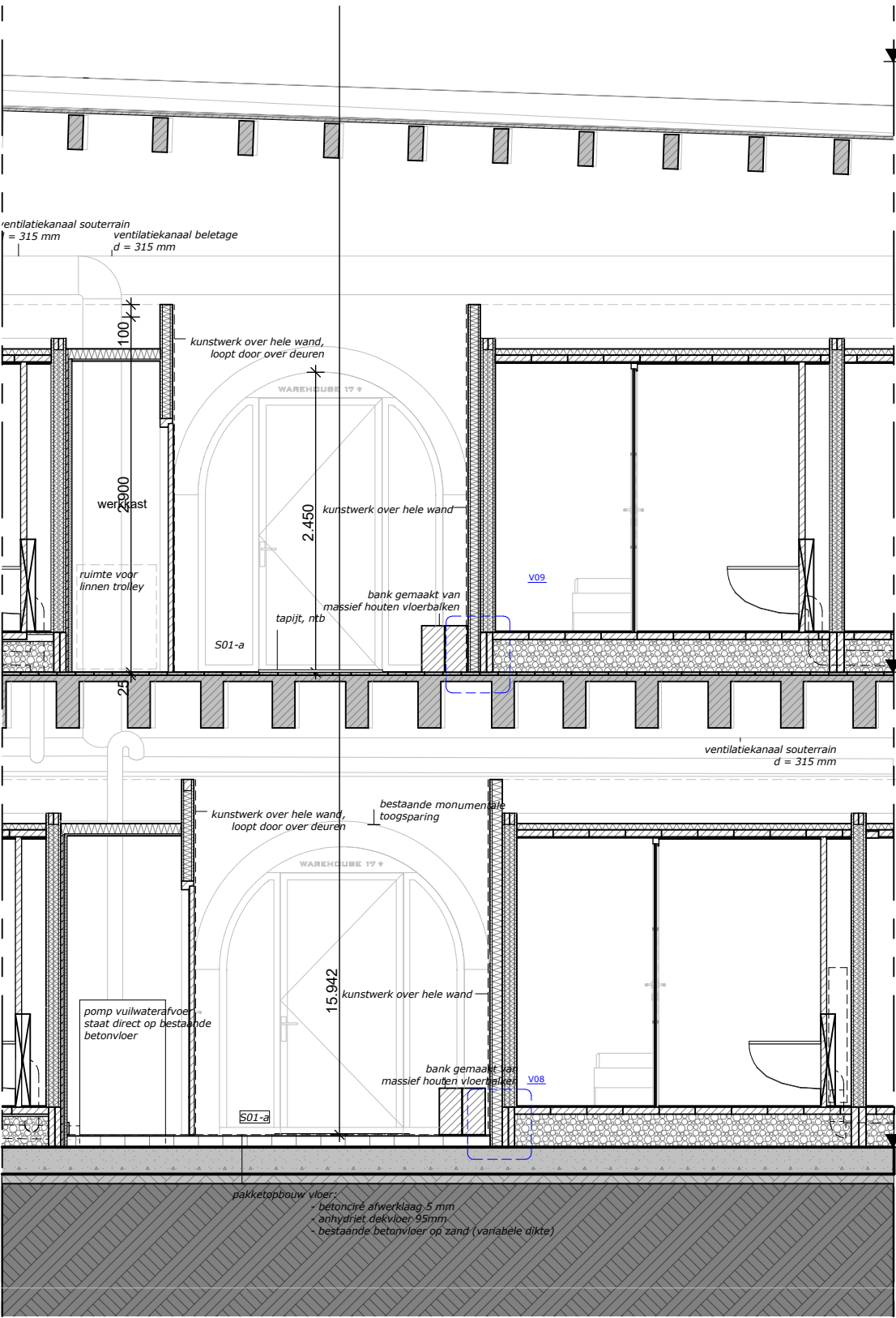
3d doorsnede



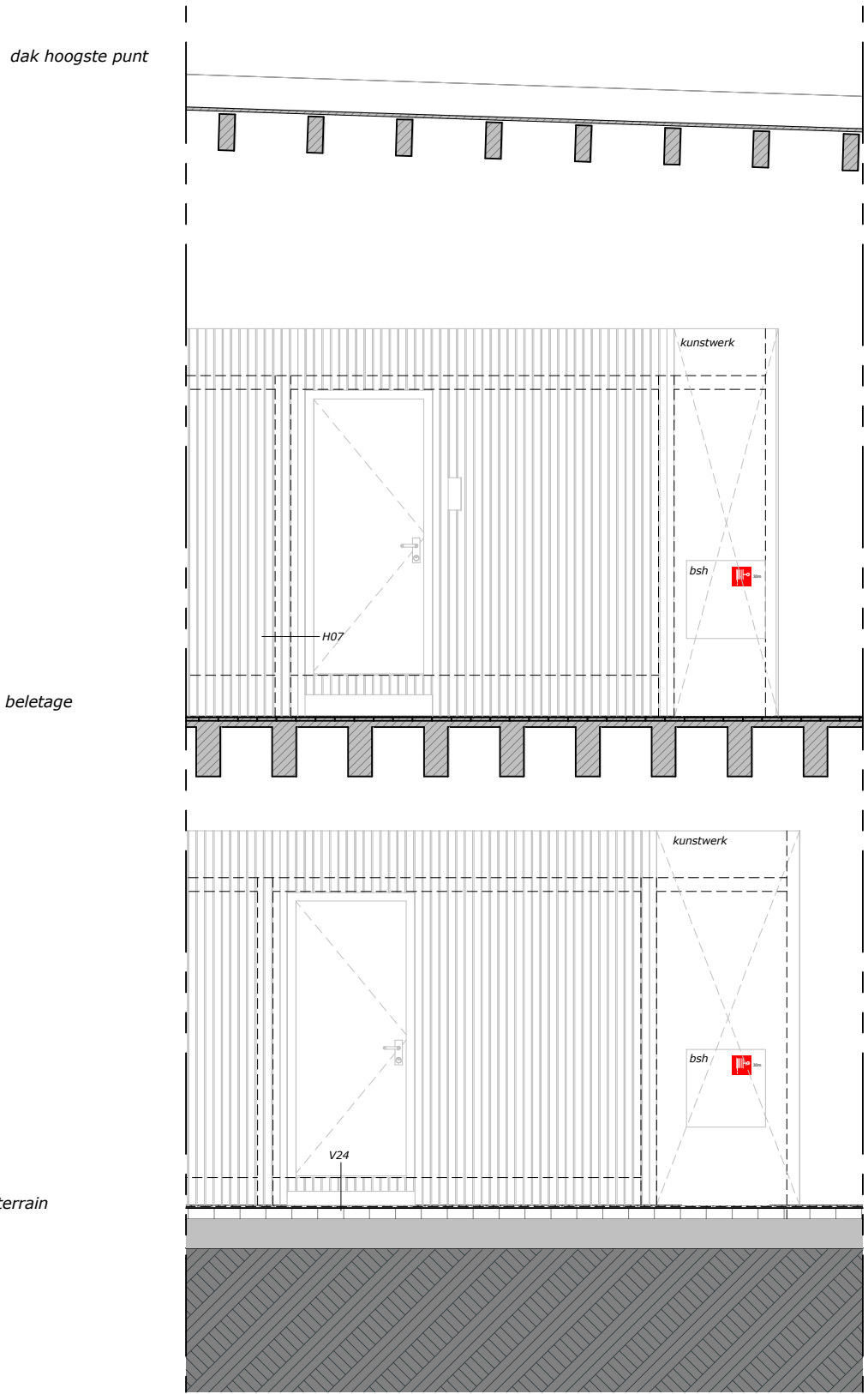
impressie



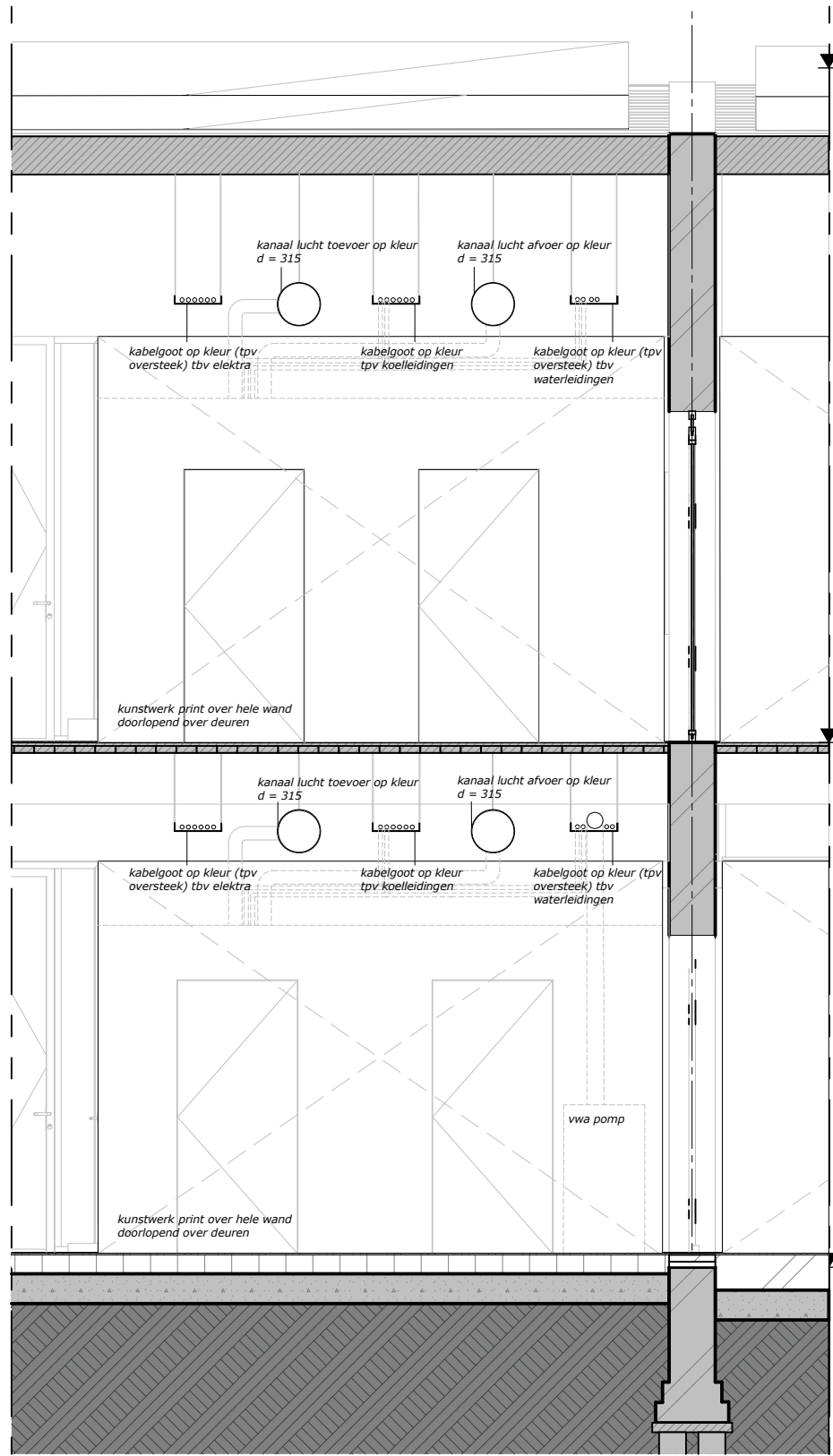
fragment module



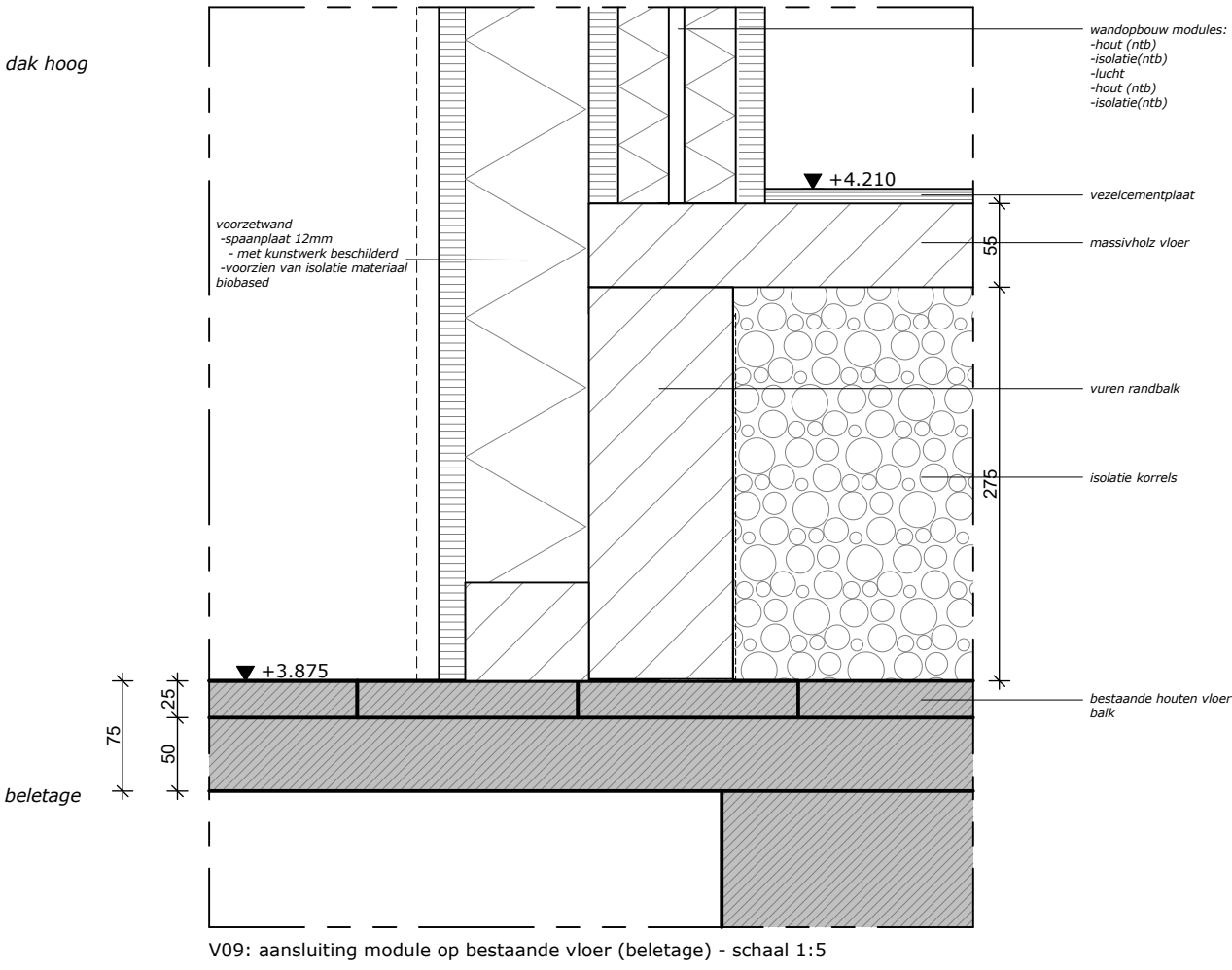
fragment doorsnede: modules - schaal 1:50



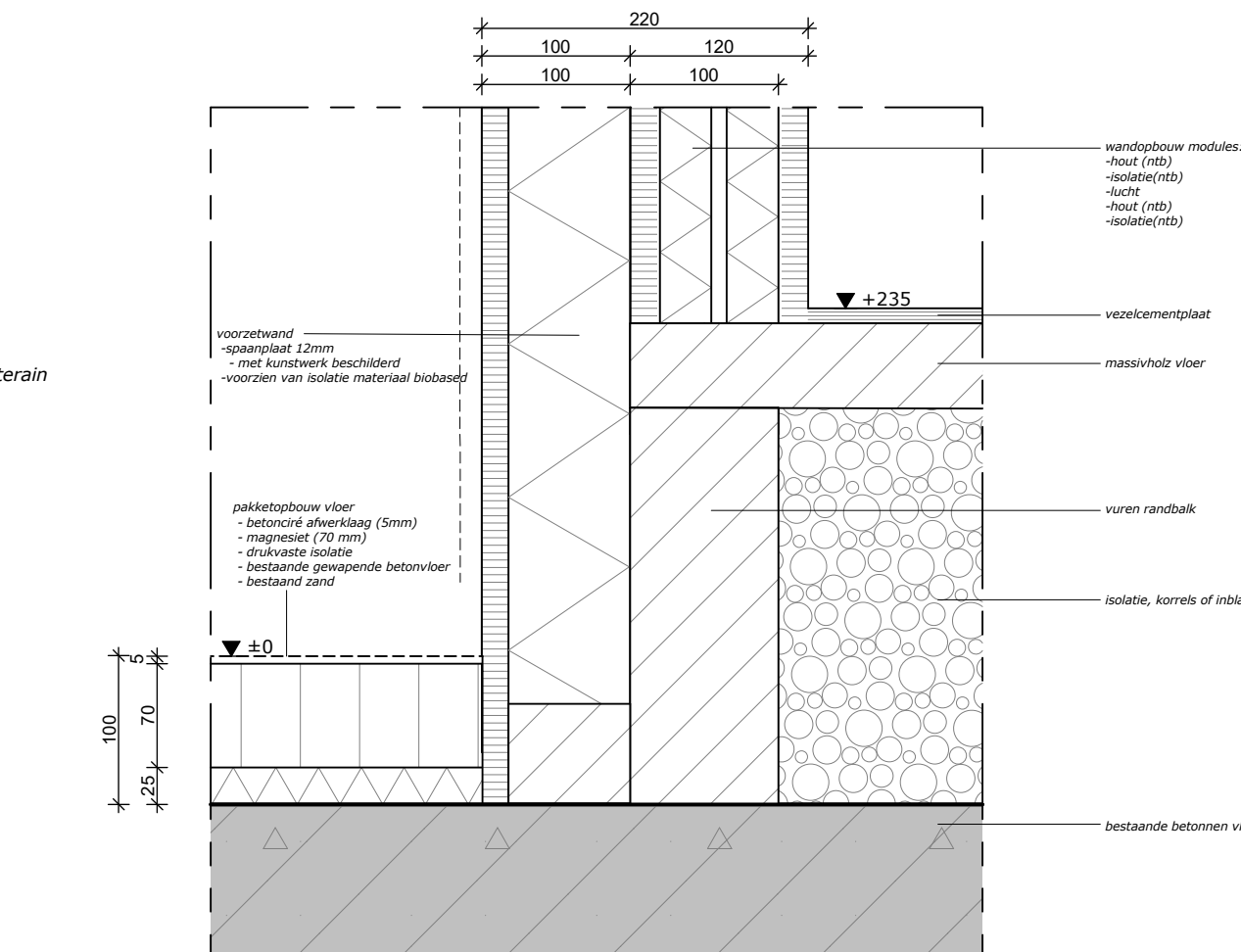
fragment doorsnede: doorsnede - schaal 1:50



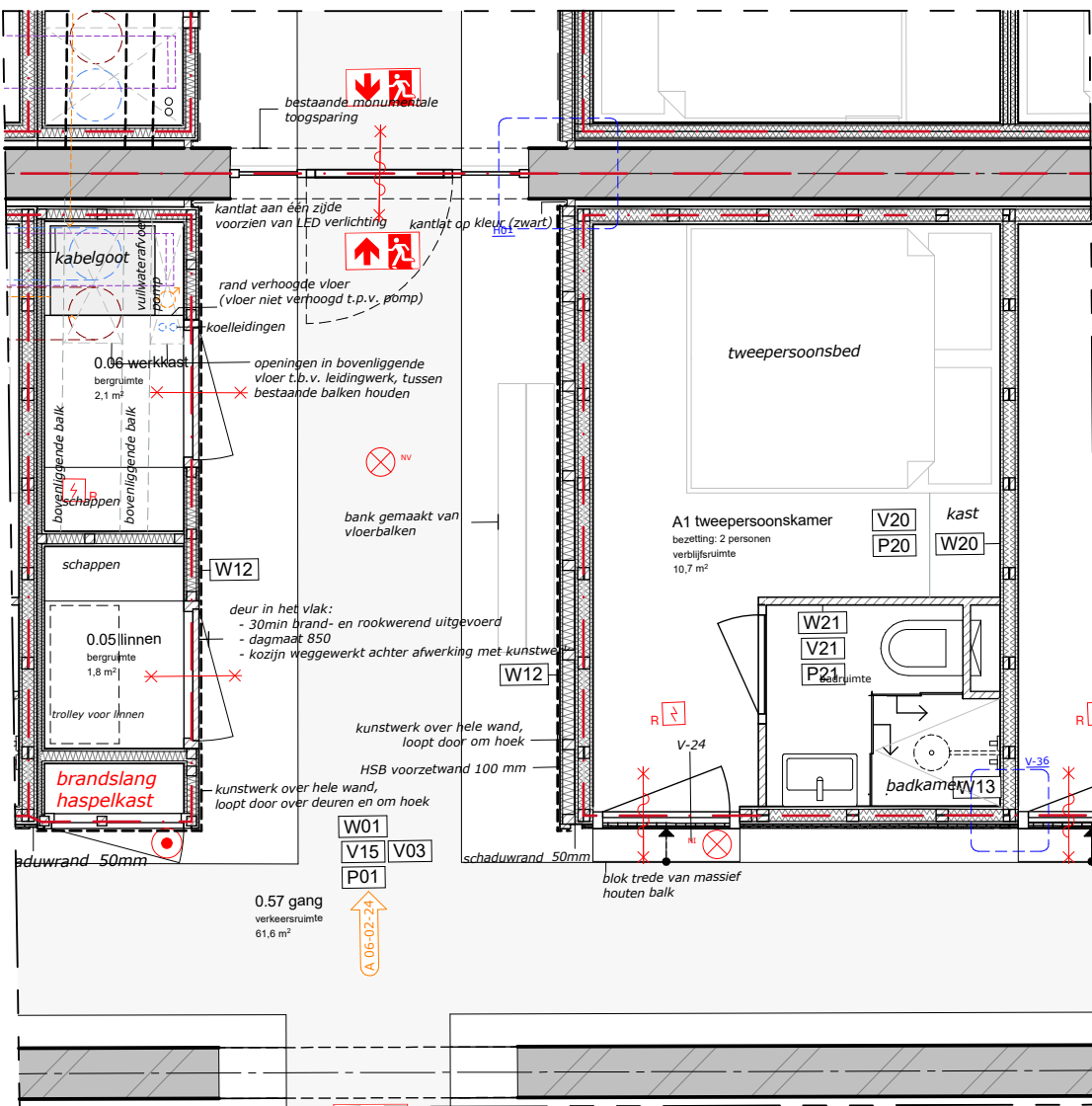
fragment doorsnede: modules - schaal 1:50



V09: aansluiting module op bestaande vloer (beletage) - schaal 1:5



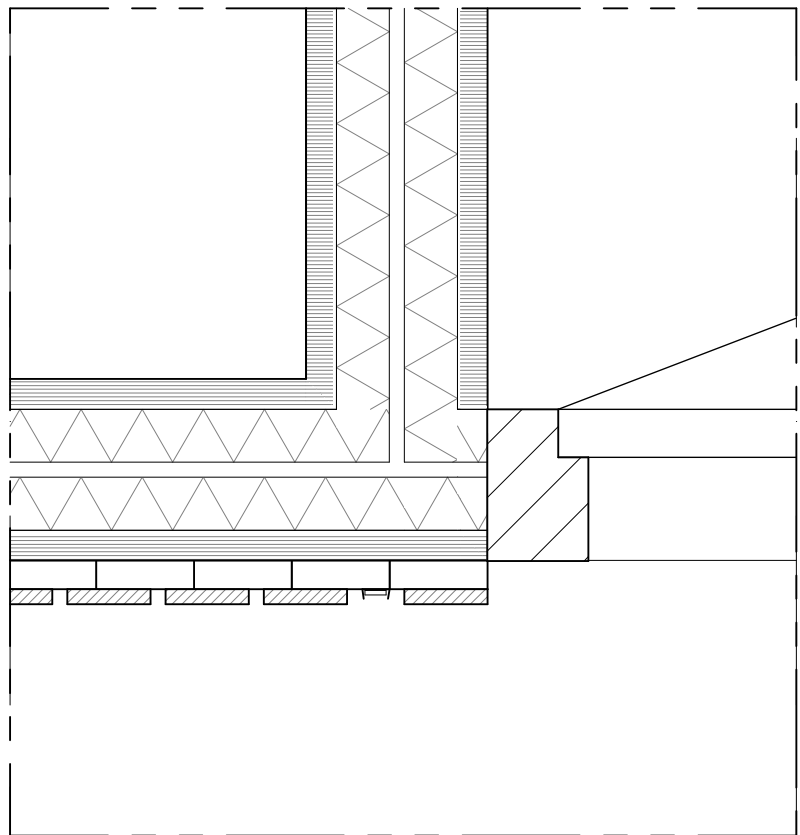
detail V08: aansluiting module op bestaande vloer (souterrain) - schaal 1:5



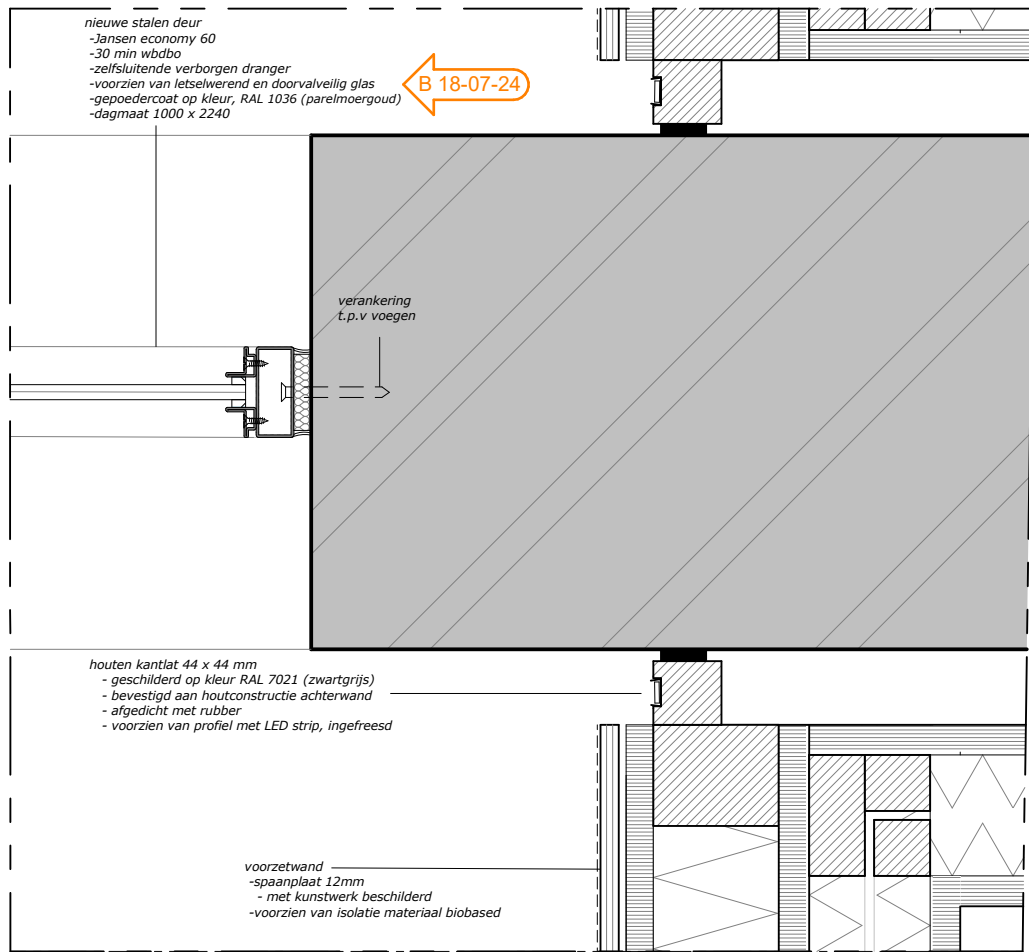
fragment plattegrond: modules(souterrain) - schaal 1:50



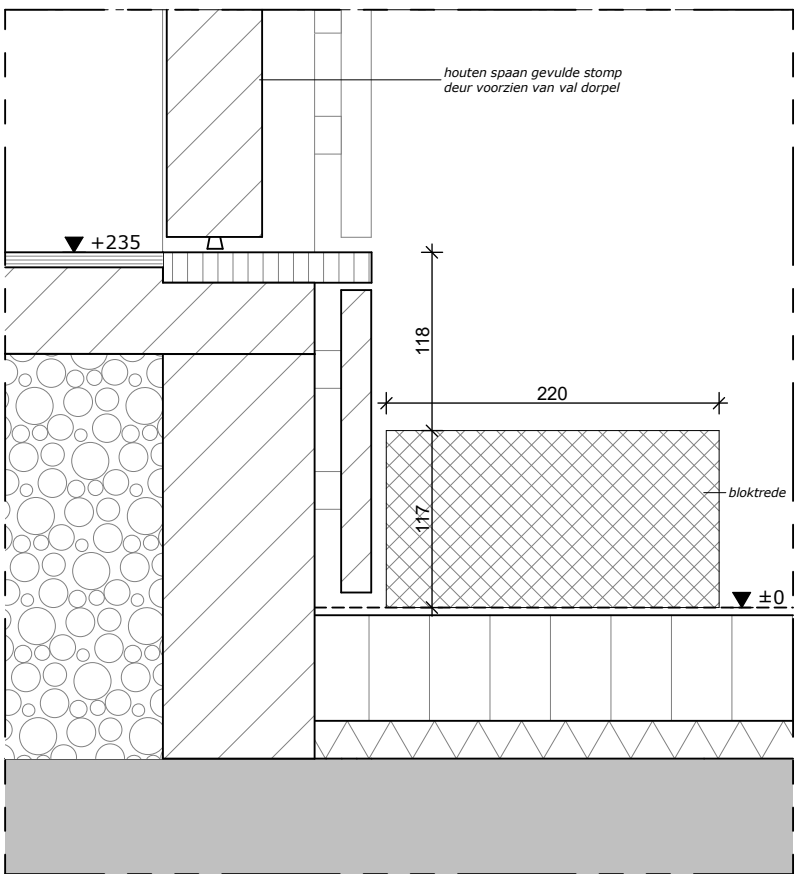
Impressie



detail H07: overgang tussen modules - schaal 1:5



detail H01: aansluiting pui in toegangsruimte en module op bestaande bouwmuur - schaal 1:5



detail V24: ingang modules - 1:5

DEFINITIEF ONTWERP

178 Westelijk Handelsterrein

NIEUWE TOESTAND

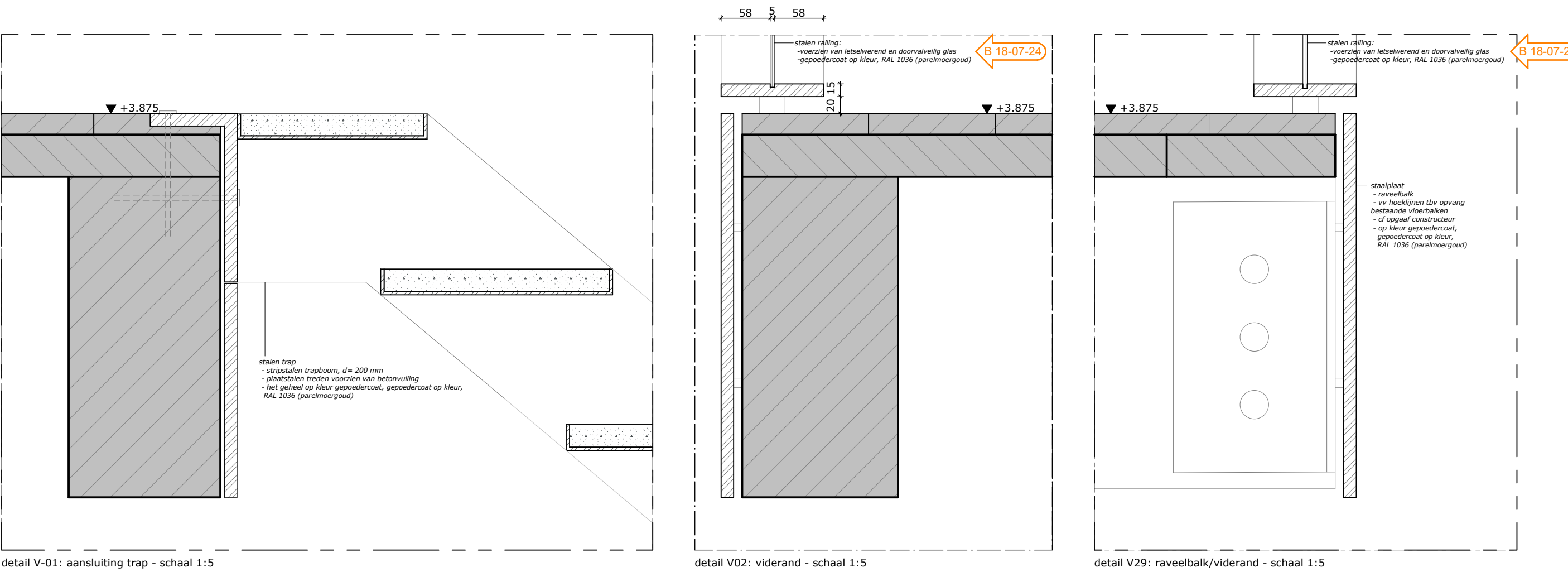
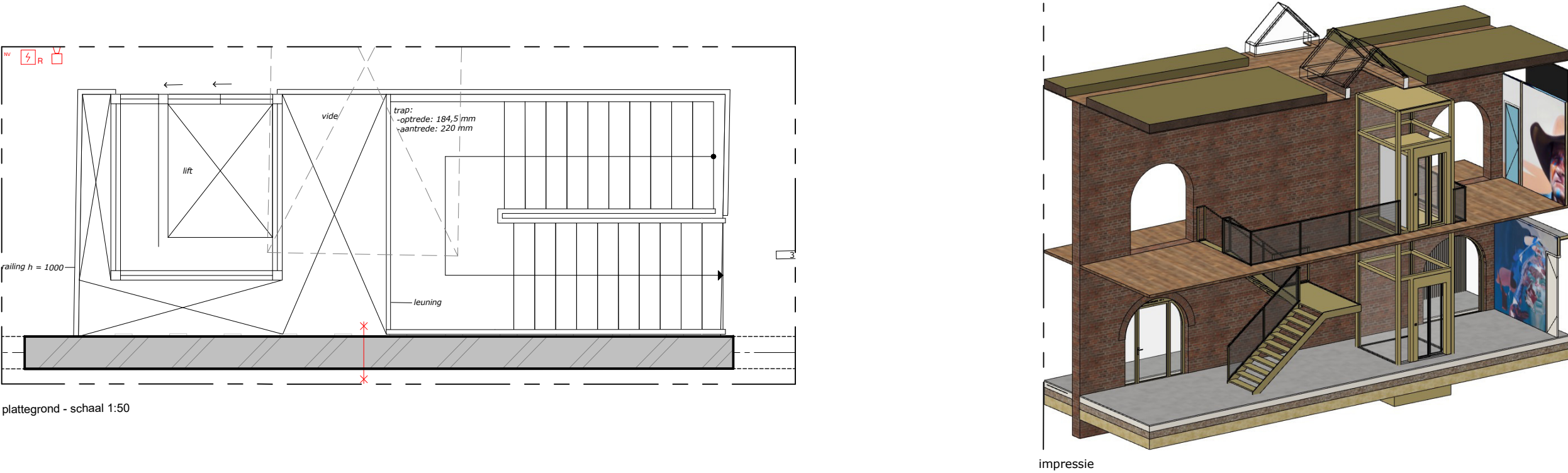
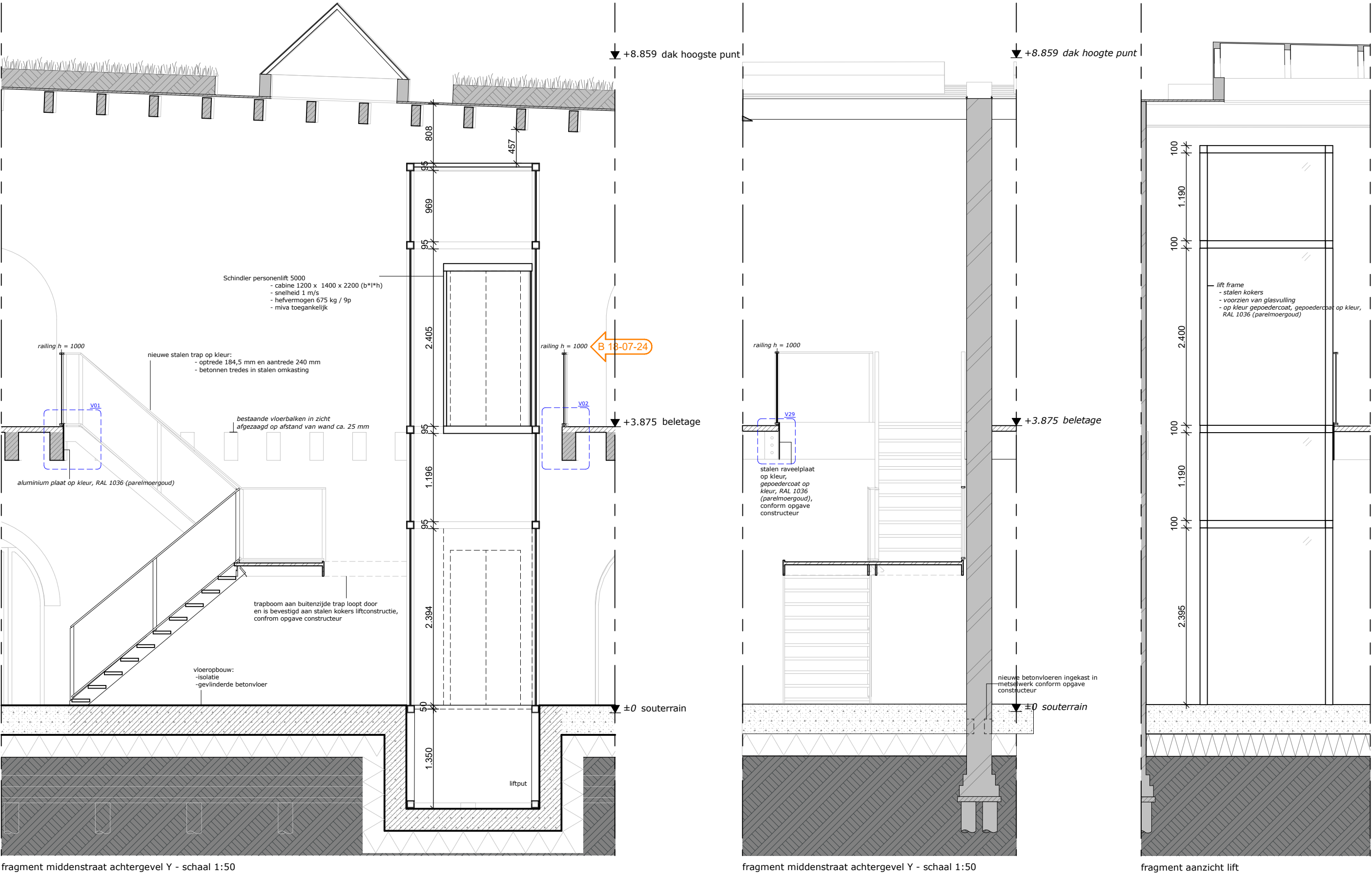
3.5.5 fragment modules

formaat: A1  
schaal: 1:50, 1:5  
datum: 18-7-2024

wijz. A:  
wijz. B:  
wijz. C:



trap en lift pakhuis 6 en 24



trap pakhuis 13 en 31

