

Basisframe aanzichten

FLEXHAL

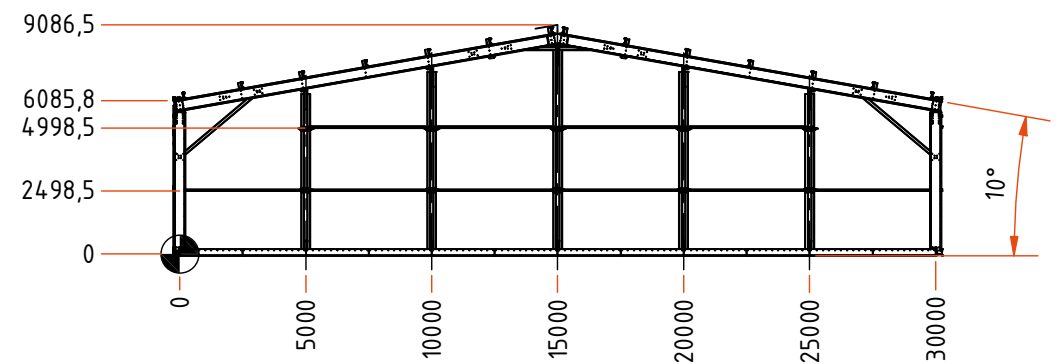
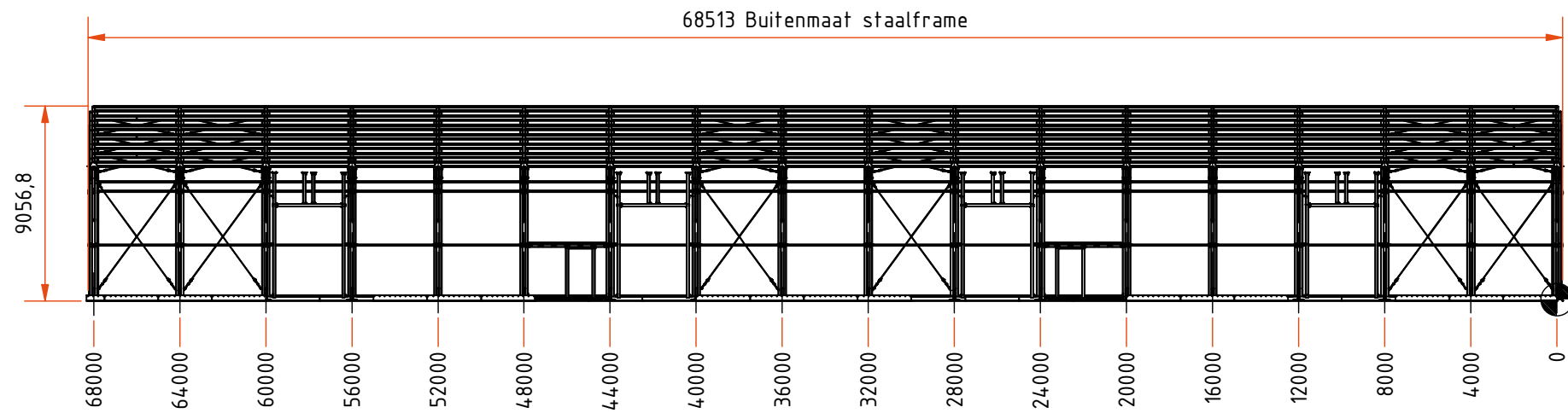
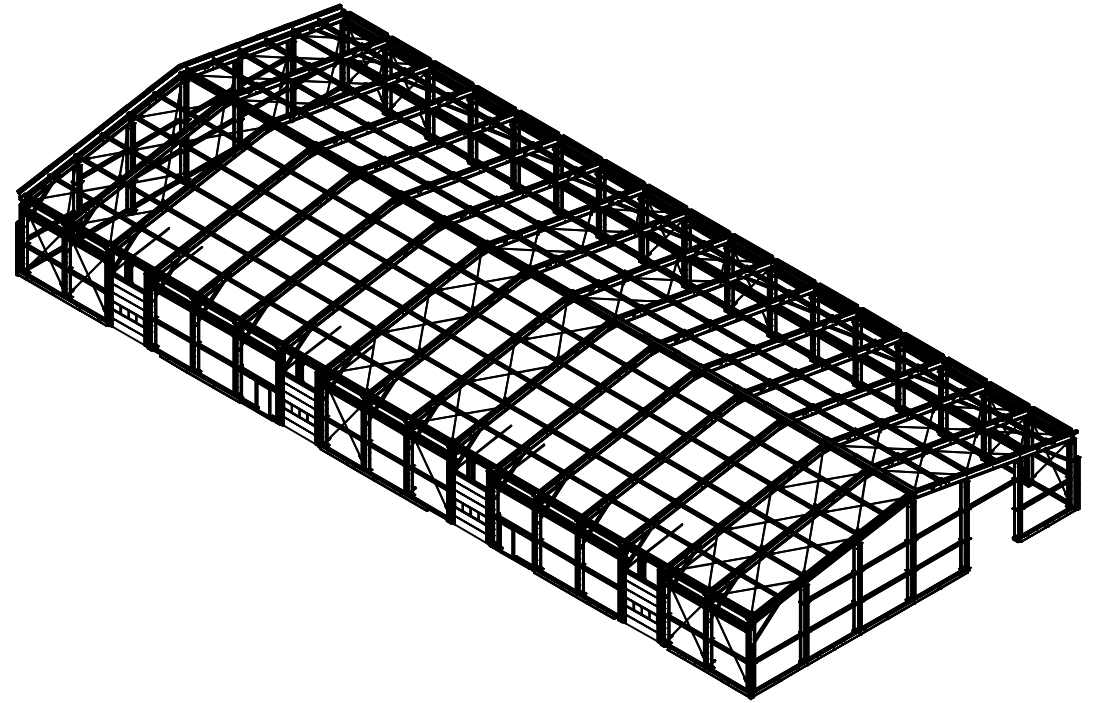
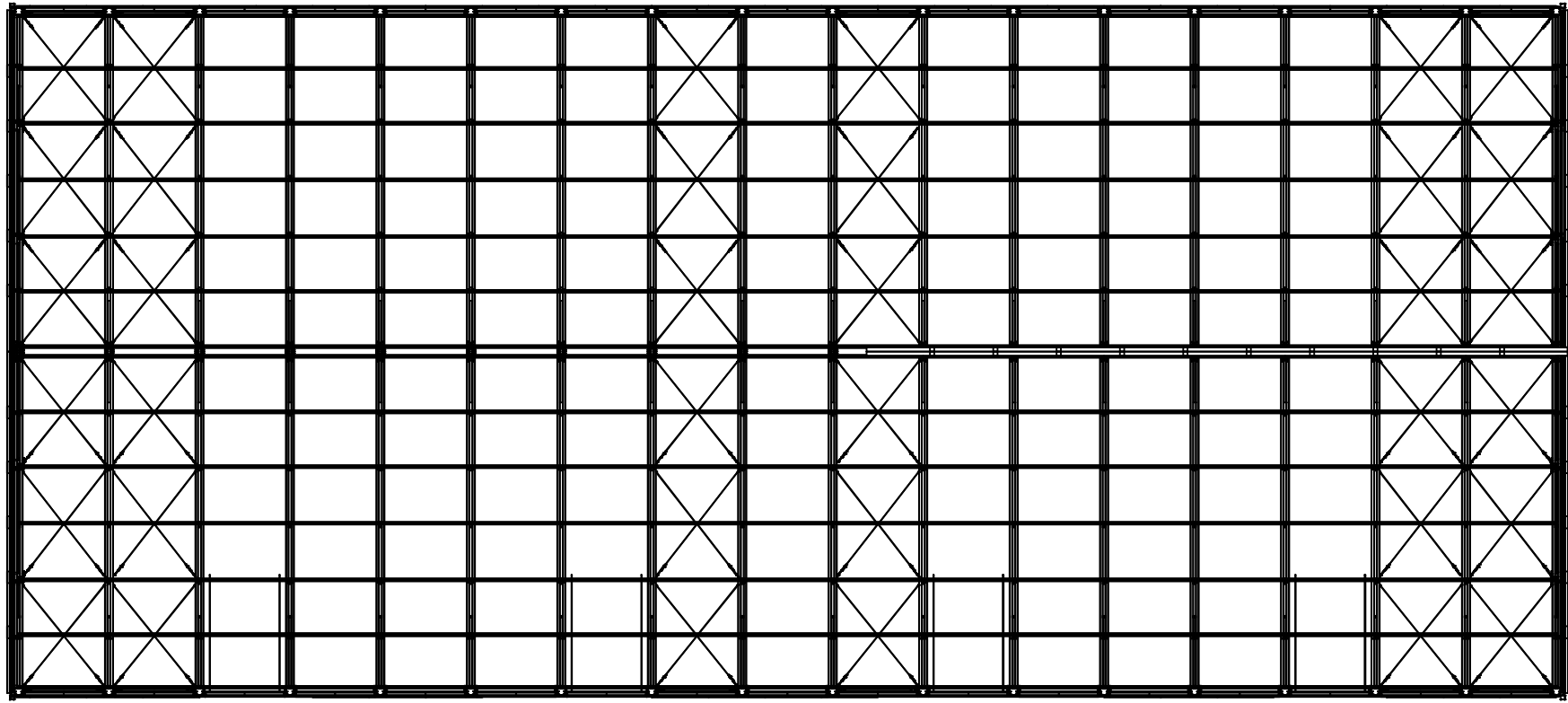


Dimensions in mm

Description: FH450XL - Most (Hardenberg)

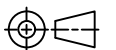
Status: Engineering
Article code: 159308
Revision: A
Material + treatment:

Drawn by: GD
Scale: 1 : 150
Format: A1
Mass: 432270,375 kg



Basisframe afmetingen

FLXHAL



Dimensions in mm

Description: FH450XL - Most (Hardenberg)

Status: Engineering
Article code: 159308
Revision: A
Material + treatment:

Drawn by: GD
Scale: 1 : 300
Format: A3
Mass: 432270,375 kg

Flashing roof barge

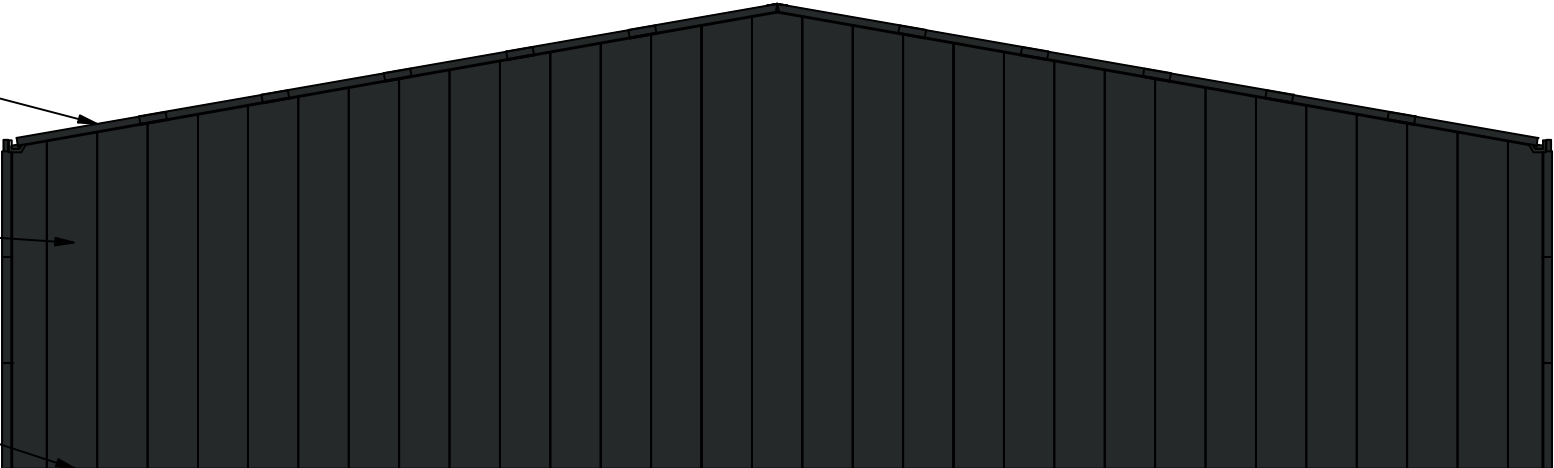
Thickness: 0.7mm
Color (outside): RAL 7021

Wallpanel

Isolation type: PIR
Isolation thickness: 60mm
Color (inside): RAL 9002
Color (outside): RAL 7021

Flashing ground finishing

Thickness: 0.7mm
Color (outside): RAL 7021



Front

Flashing roof barge

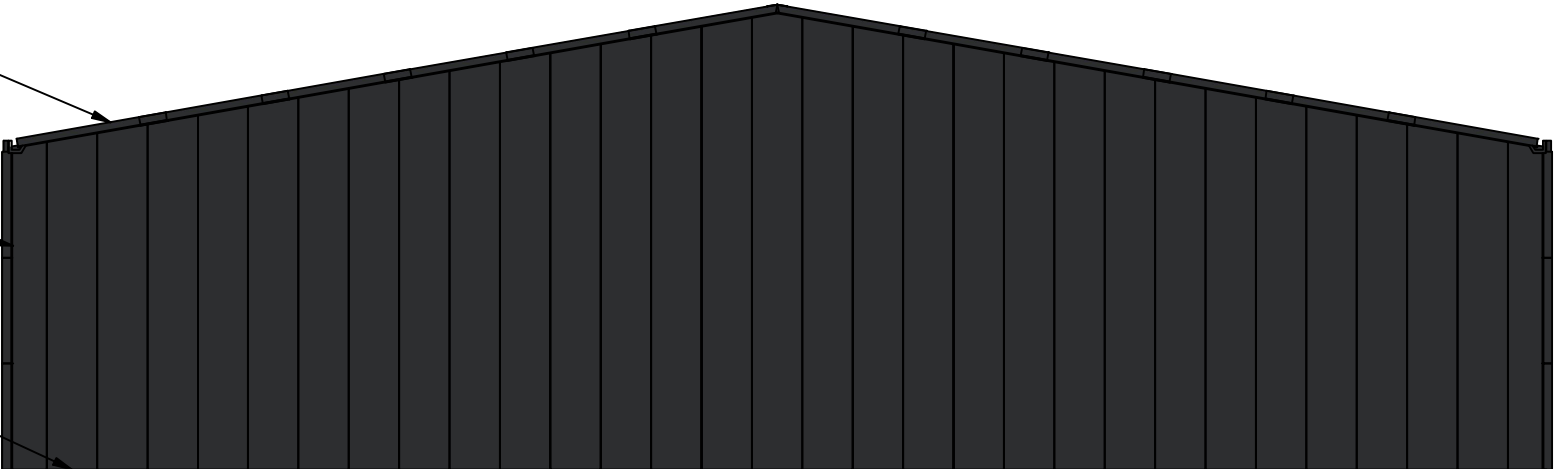
Thickness: 0.7mm
Color (outside): RAL 7021

Wallpanel

Isolation type: PIR
Isolation thickness: 60mm
Color (inside): RAL 9002
Color (outside): RAL 7021

Flashing ground finishing

Thickness: 0.7mm
Color (outside): RAL 7021



Rear

Aanzichten gevels

FLXHAL

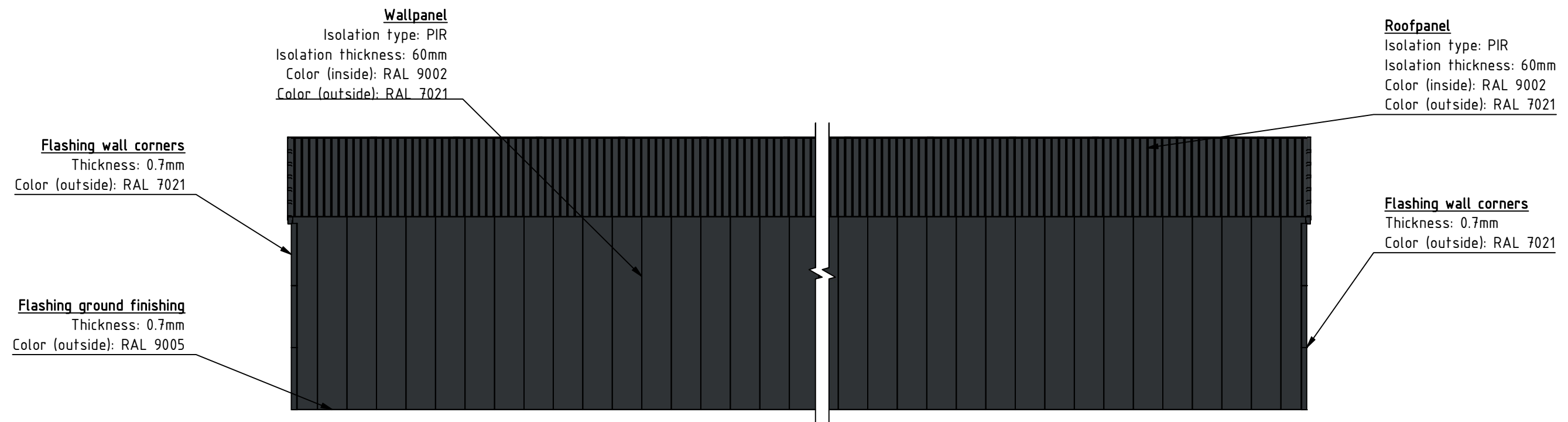


Dimensions in mm

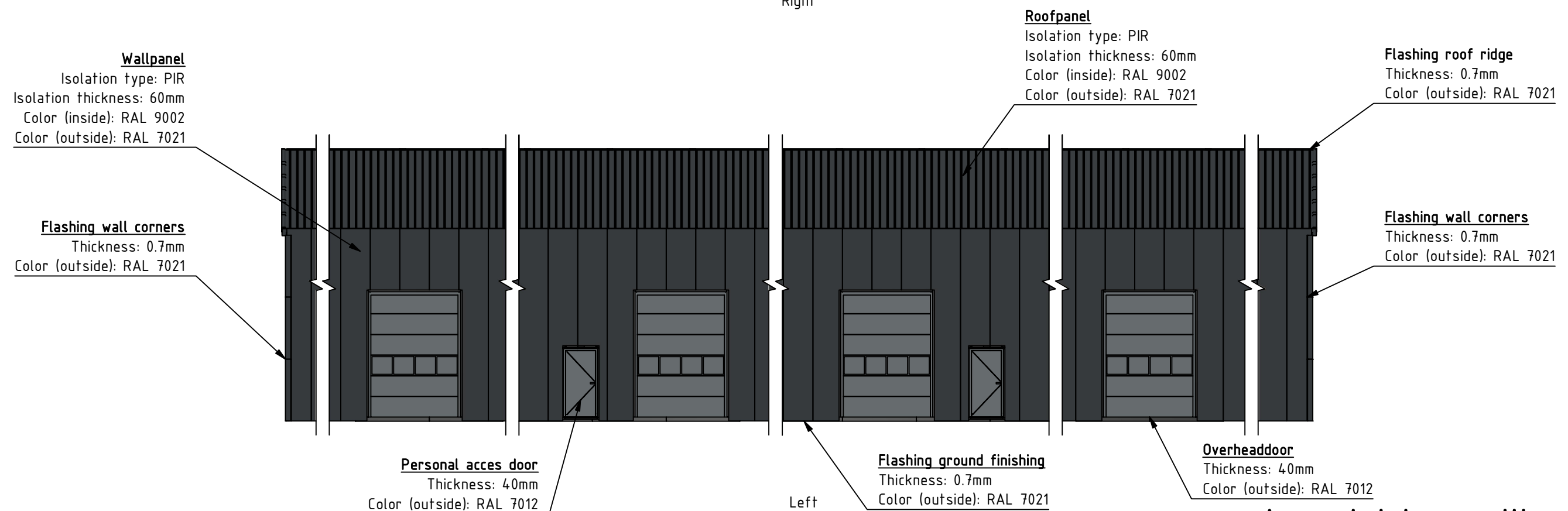
Description: FH450XL - Most (Hardenberg)

Status: Engineering
Article code: 159308
Revision: A
Material + treatment:

Drawn by: GD
Scale: 1 : 150
Format: A3
Mass: 432270,375 kg



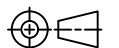
Right



Left

Aanzichten zijkanten

FLXHAL

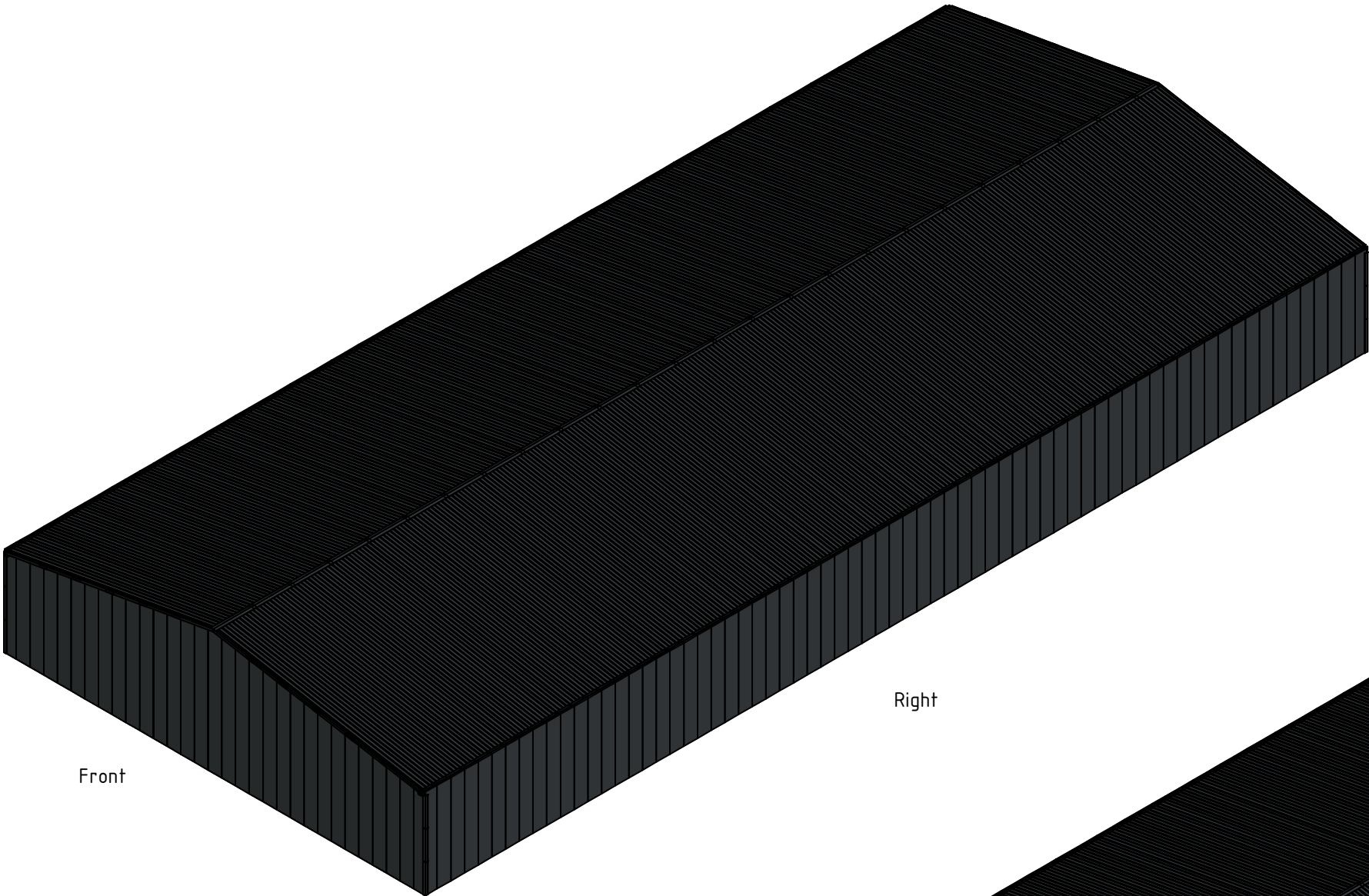


Dimensions in mm

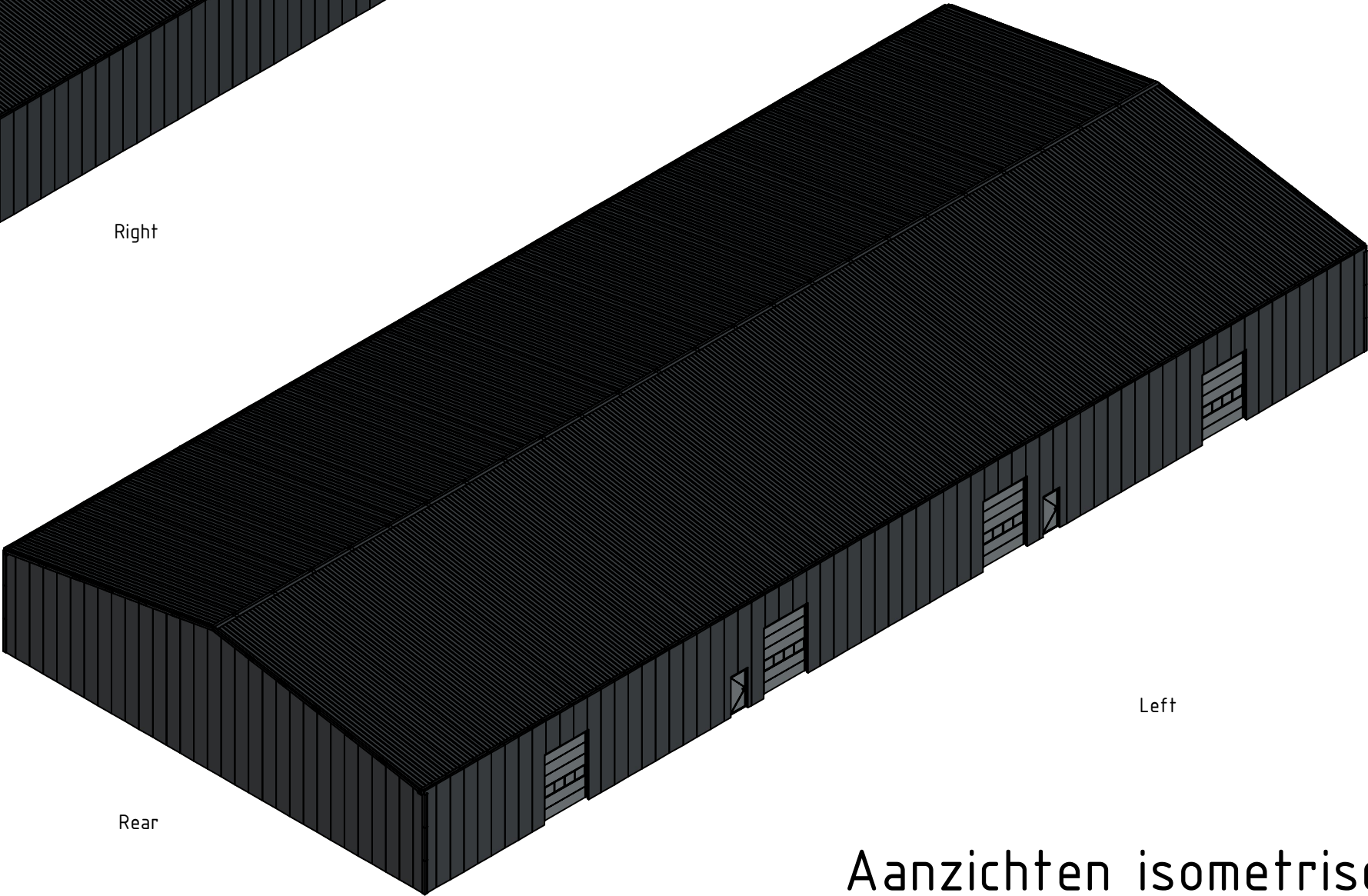
Description: FH450XL - Most (Hardenberg)

Status: **Engineering**
Article code: 159308
Revision: A
Material + treatment:

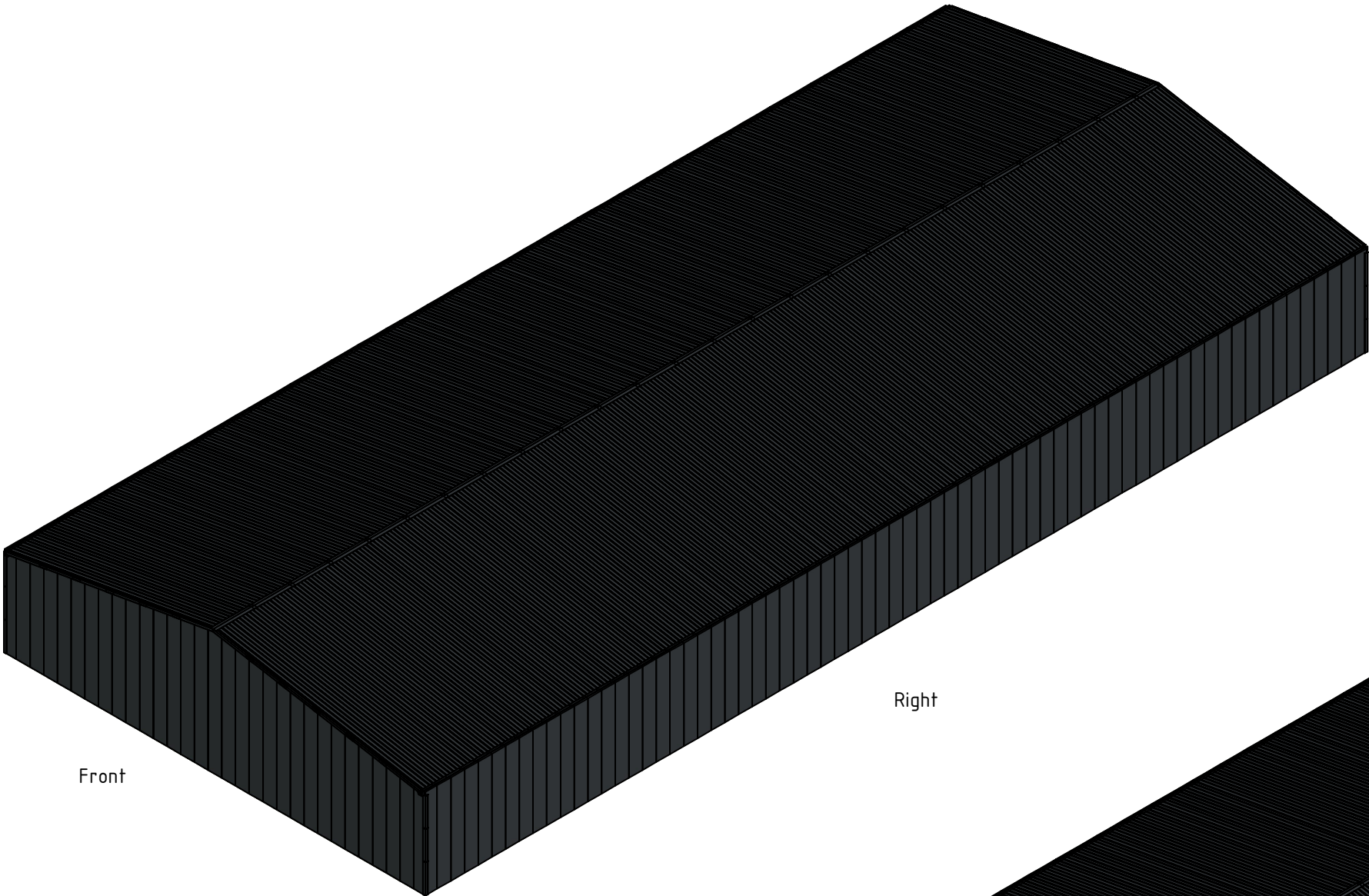
Drawn by: GD
Scale: 1 : 150
Format: A3
Mass: 432270,375 kg



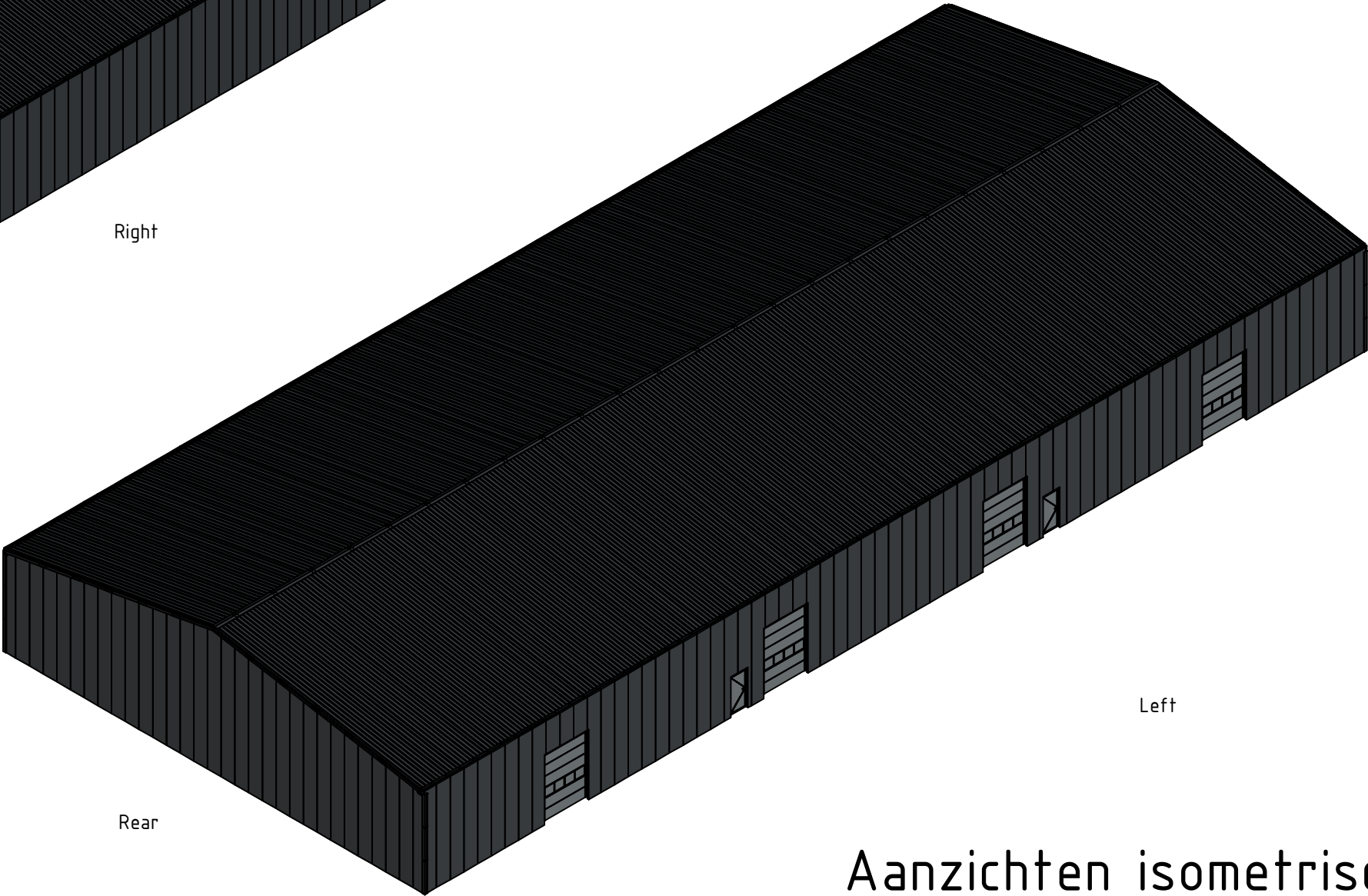
Front



Left



Right



Rear

Aanzichten isometrisch

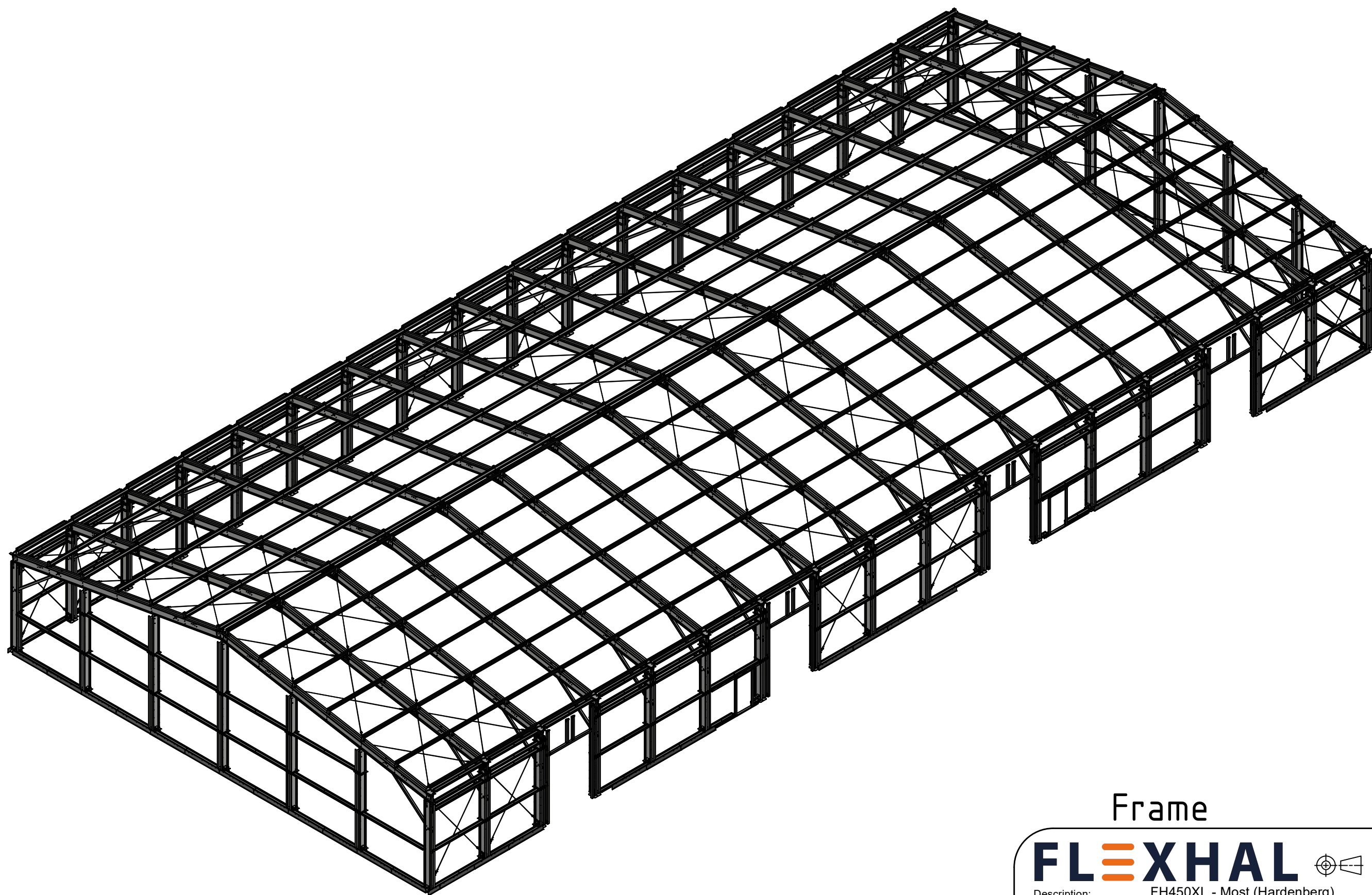


Dimensions in mm

Description: FH450XL - Most (Hardenberg)

Status: Engineering
Article code: 159308
Revision: A
Material + treatment:

Drawn by: GD
Scale: 1 : 300
Format: A3
Mass: 432270,375 kg



Frame

FLXHAL

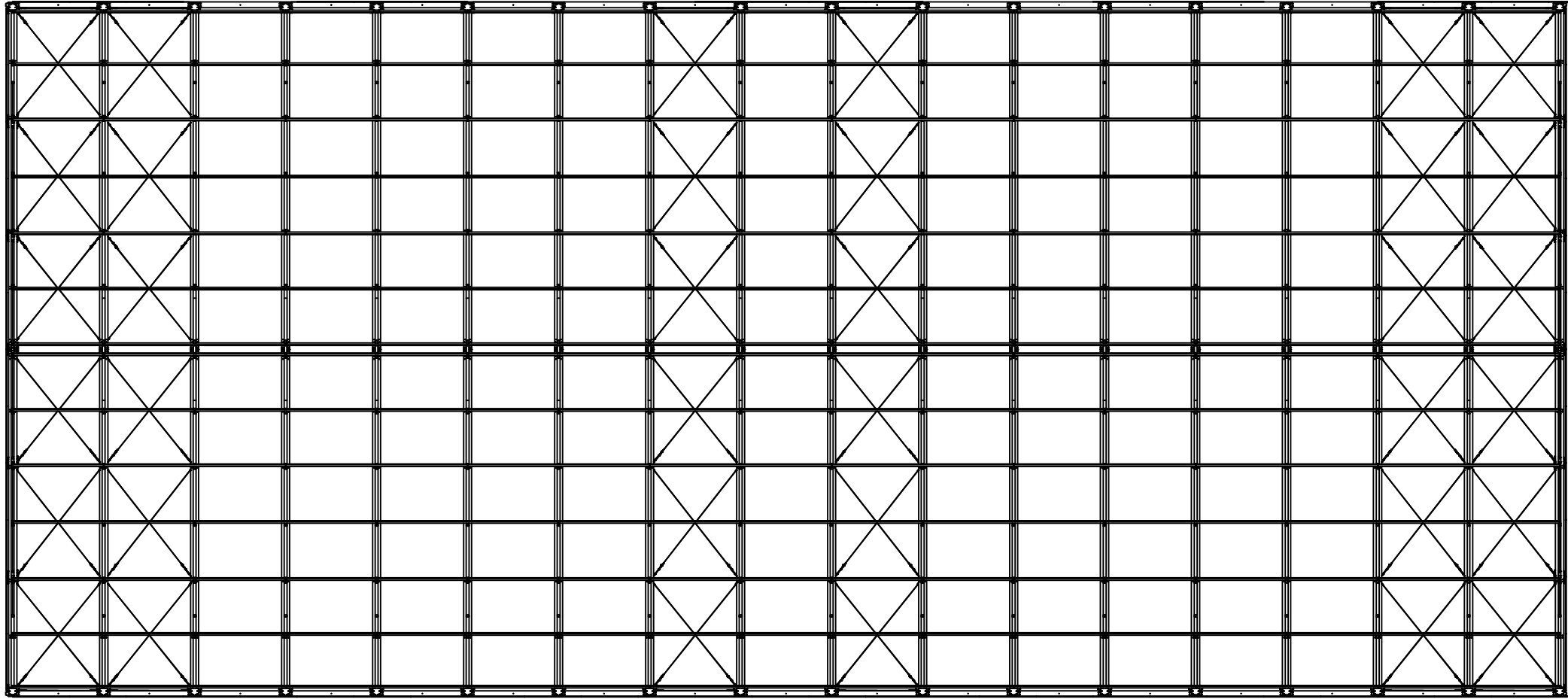


Dimensions in mm

Description: FH450XL - Most (Hardenberg)

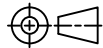
Status: **Engineering**
Article code: 159308
Revision: A
Material + treatment:

Drawn by: GD
Scale: 1 : 200
Format: A3
Mass: 432270,375 kg



Bovenaanzicht

FLXHAL

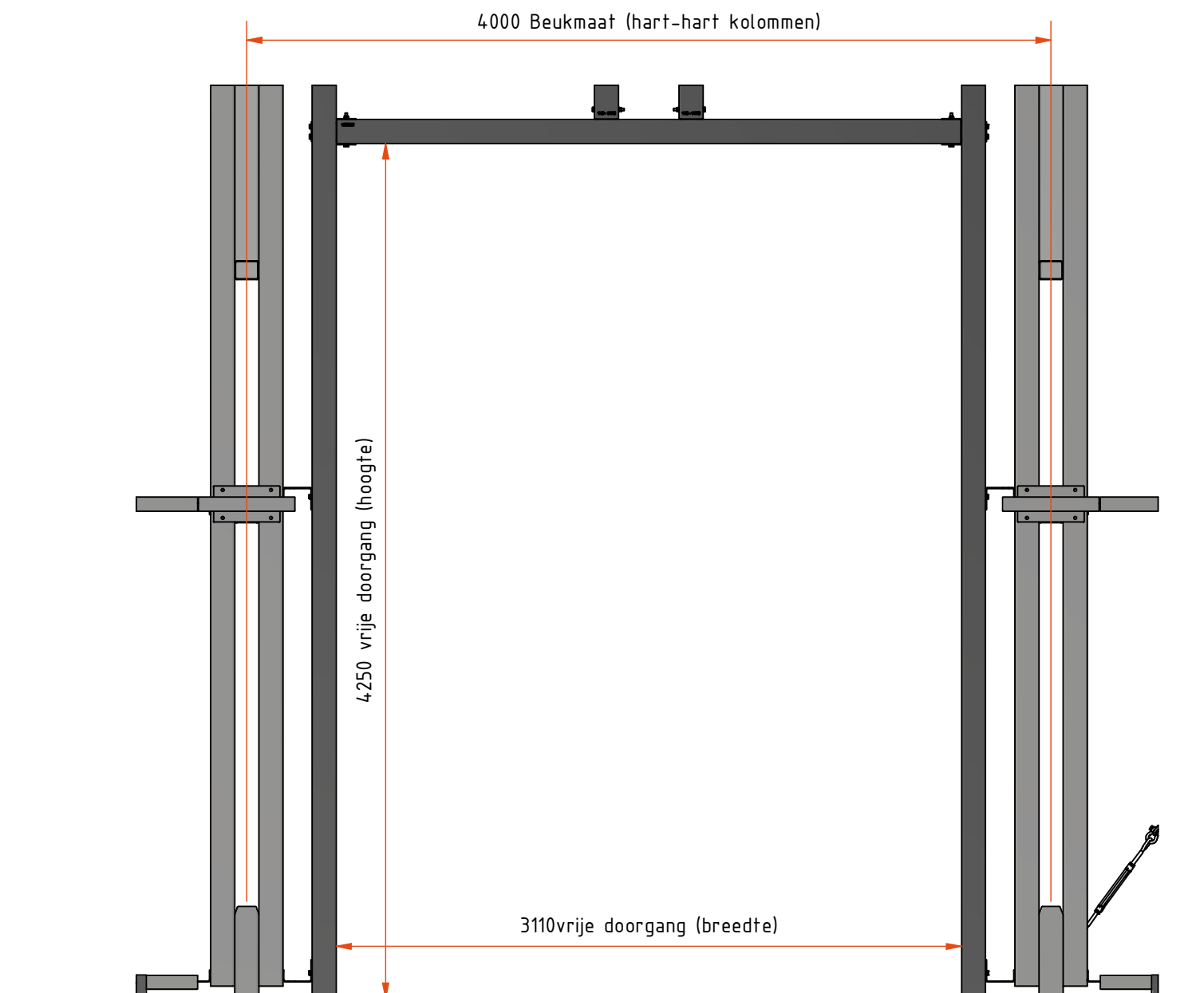


Dimensions in mm

Description: FH450XL - Most (Hardenberg)

Status: Engineering
Article code: 159308
Revision: A
Material + treatment:

Drawn by: GD
Scale: 1 : 250
Format: A3
Mass: 432270,375 kg



OHD afmetingen

FLXHAL



Dimensions in mm

Description: FH450XL - Most (Hardenberg)

Status: Engineering
Article code: 159308
Revision: A
Material + treatment:

Drawn by: GD
Scale: 1 : 300
Format: A3
Mass: 432270,375 kg