



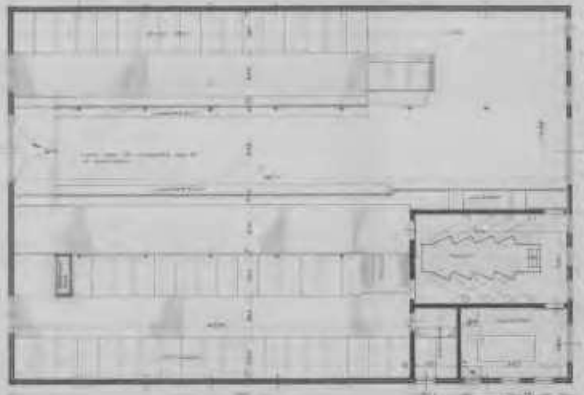
FAÇADE GAUCHE



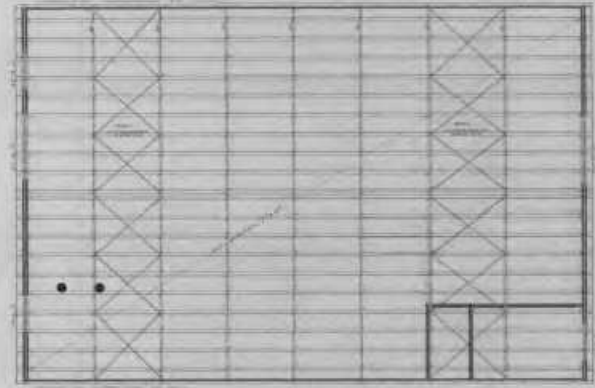
FAÇADE AVANT



FAÇADE DROITE



PLAN



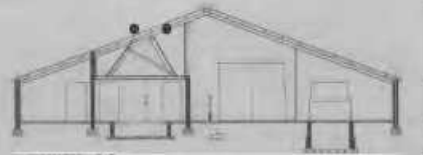
TOITURE



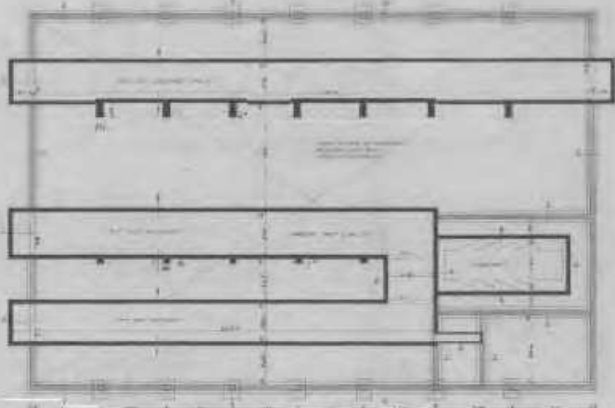
FAÇADE ARRIÈRE



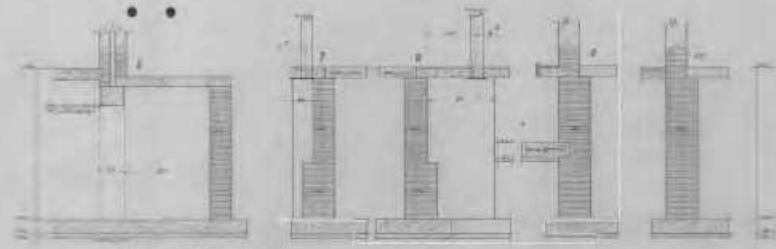
SECTION A-A



SECTION B-B



PLAN DÉTAILLÉ



SECTION VERTICALE MUR ET TOITURE



DÉTAIL VITRE



DÉTAIL TOITURE



DÉTAIL TRAPÈZE

MÉTRES		PIEDS	
1.00	3.28	1.00	3.28
2.00	6.56	2.00	6.56
3.00	9.84	3.00	9.84
4.00	13.12	4.00	13.12
5.00	16.40	5.00	16.40
6.00	19.68	6.00	19.68
7.00	22.96	7.00	22.96
8.00	26.24	8.00	26.24
9.00	29.52	9.00	29.52
10.00	32.80	10.00	32.80

