



TREE HOUSE

Cie OCE
31 januari 2024

PLP/ARCHITECTURE



PRO
VAST

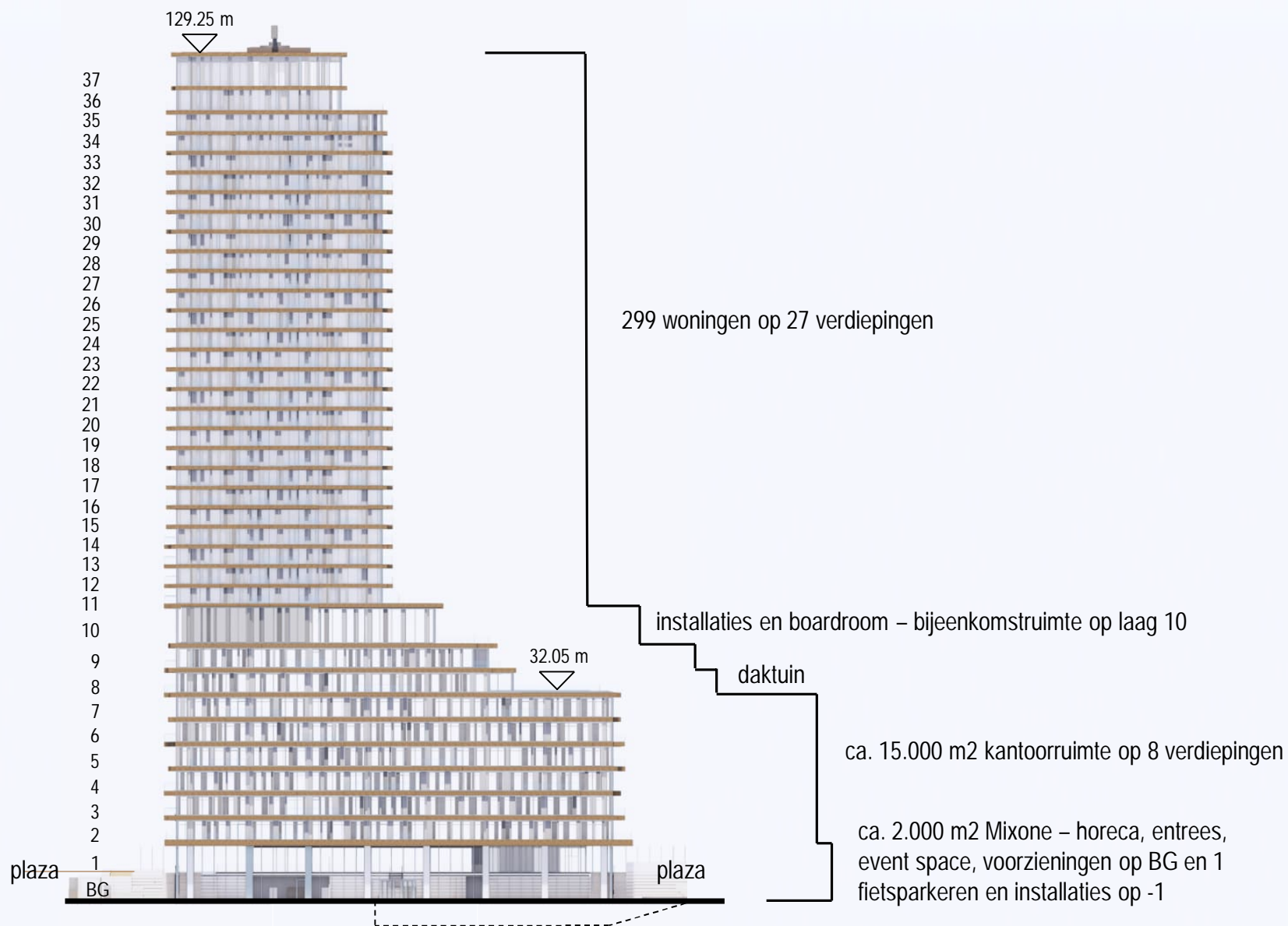


PLP/ARCHITECTURE

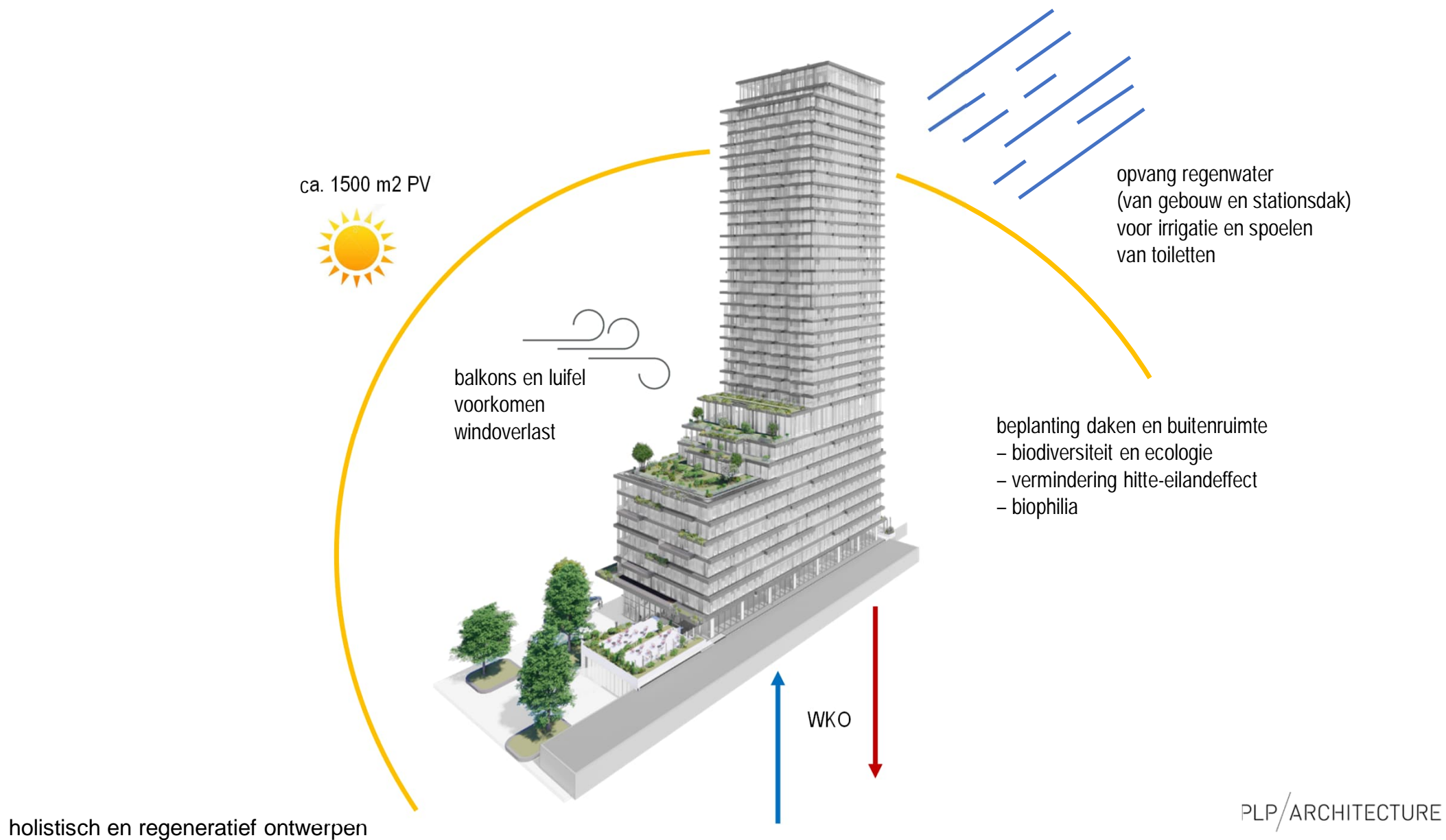




PLP/ARCHITECTURE









- Swift boxes**


Recessed or surface-mounted on the North facade
10-40 meters high.
20 nest boxes 1 pt, 30 nest boxes 2 pt.
Cost indication:
800 (1st point)
1200 (2nd point) euros excl. placement


- Starling nest boxes**


East facade, at roof gardens
5 nest boxes 1 pt, 10 nest boxes 2 pt
Cost indication:
160 (1st point)
320 (2nd point) euros excl. placement


- Semi-open nest box**


East facade, sheltered spot
30 meters high or above. 2 nest boxes
Cost indication:
50 euros excl. placement


- Bee hotel**

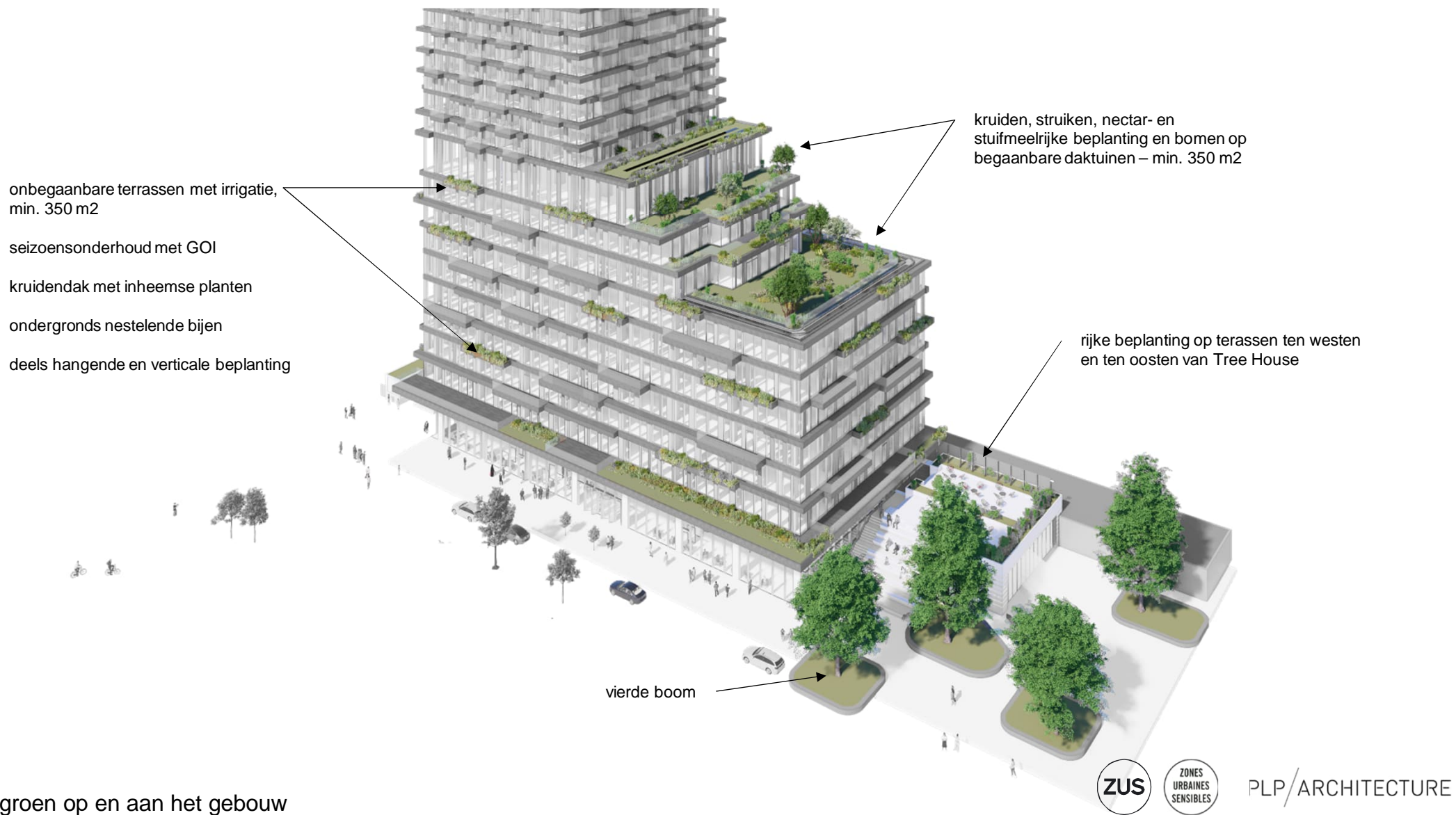
South facade in the sun
4 small bee hotels or 2 large ones
Corridors >15 cm long
Cost indication:
400 euros excl. placement

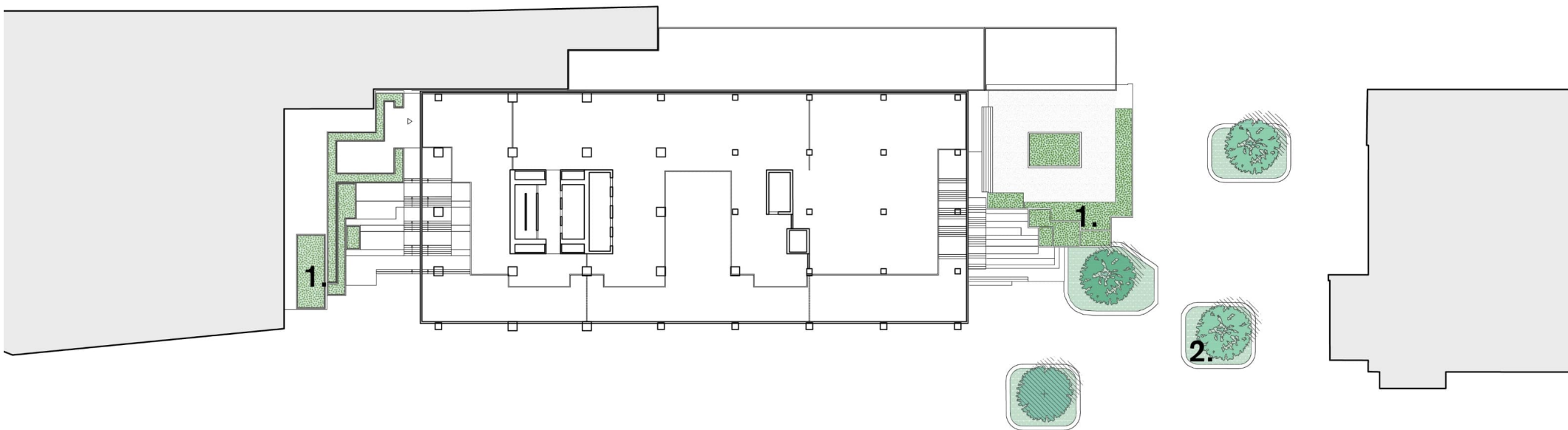

- Stapelmuur**

South facade in the sun
Brick wall with small openings for bees to live in. Doubles as a seating area.
45x45 plus 20x80.







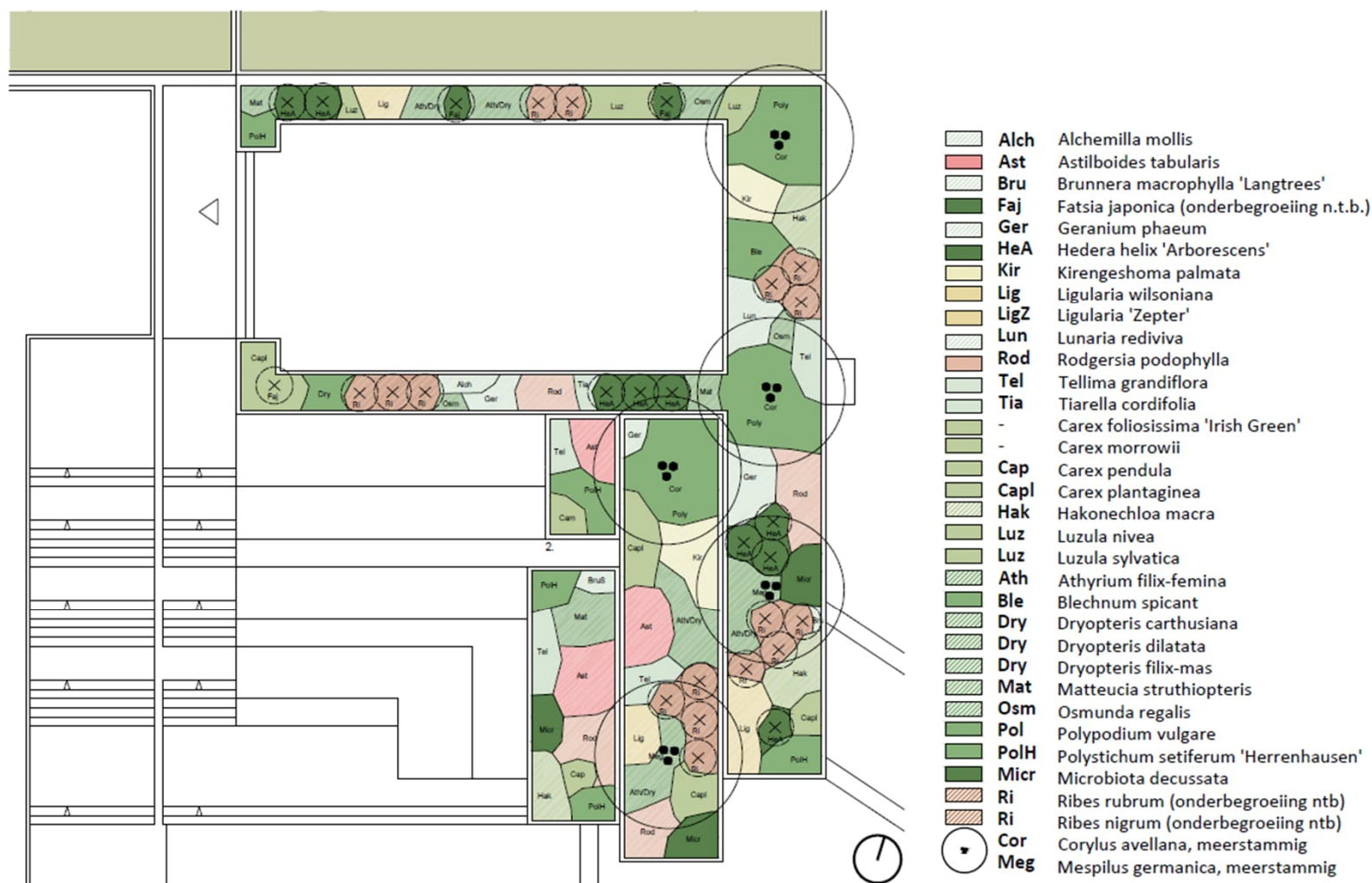


1. Beplanting tribunes
2. Beplanting boomspiegels

beplanting rond het gebouw



PLP/ARCHITECTURE



beplanting tribunes – voorbeelduitwerking (NB.contour plantvakken nog aan te passen aan laatste stand ontwerp)



PLP/ARCHITECTURE

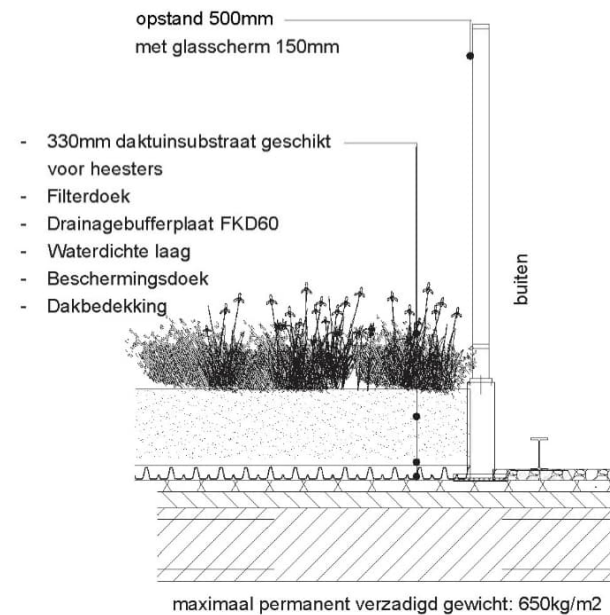
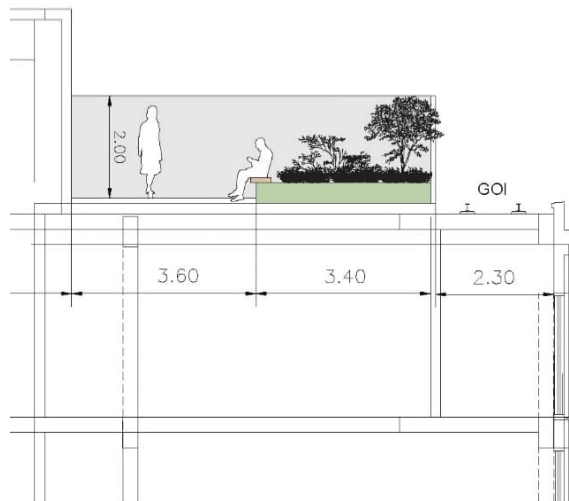


beplantingsvoorstel tribunes en terrassen 8e en 10e verdieping

N.v.t. voor hoge terrassen ivm wind en zon



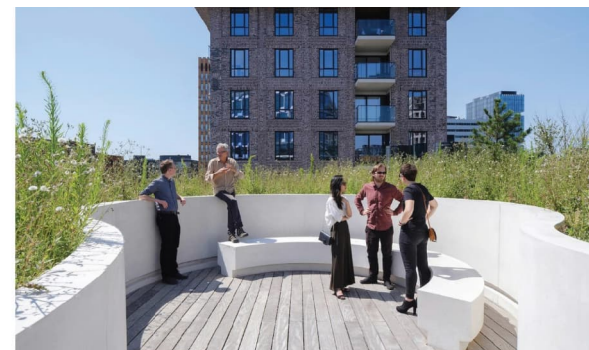
PLP/ARCHITECTURE



Pinus mugo 'Uncinata'



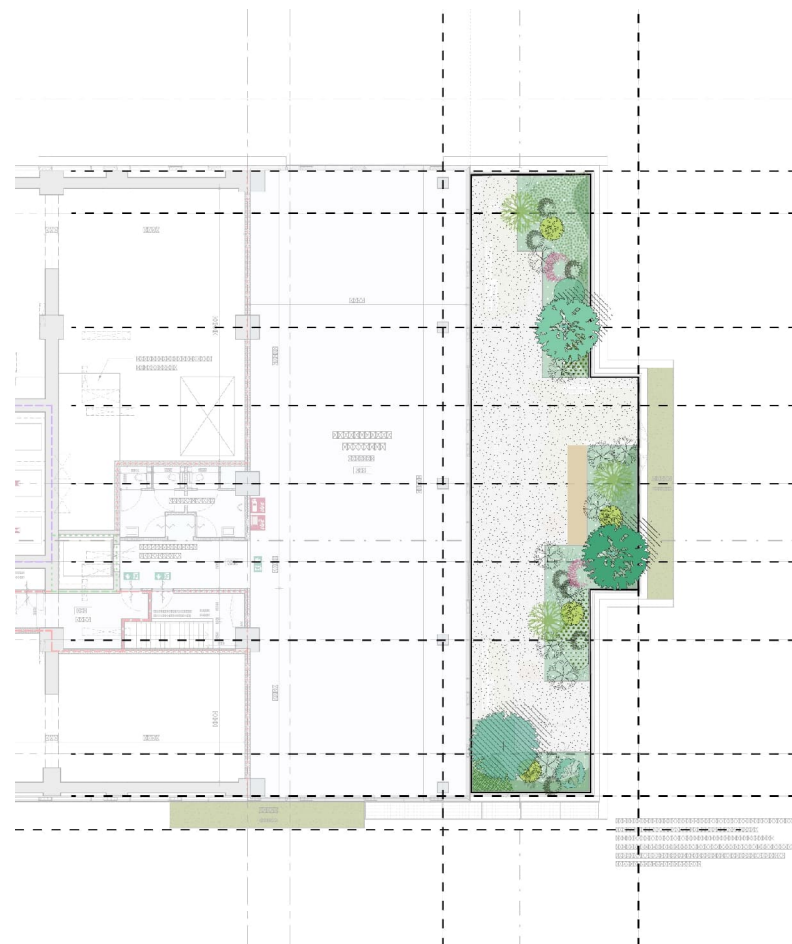
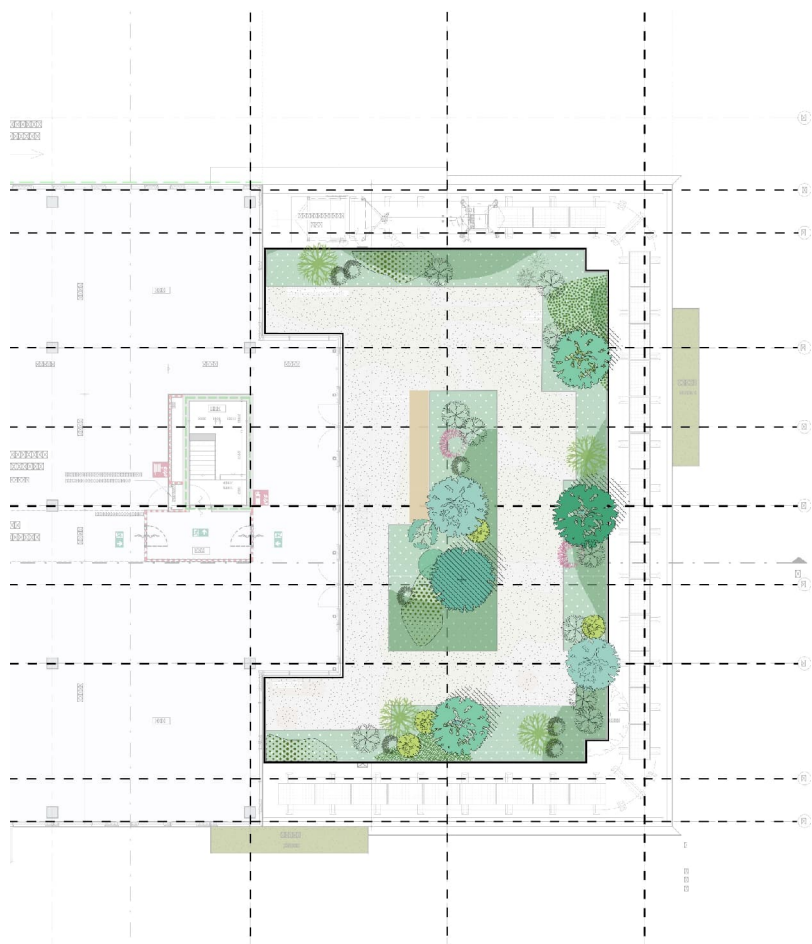
Crataegus monogyna



Voorbeelduitwerking terrassen verdieping 8 en 10



PLP/ARCHITECTURE



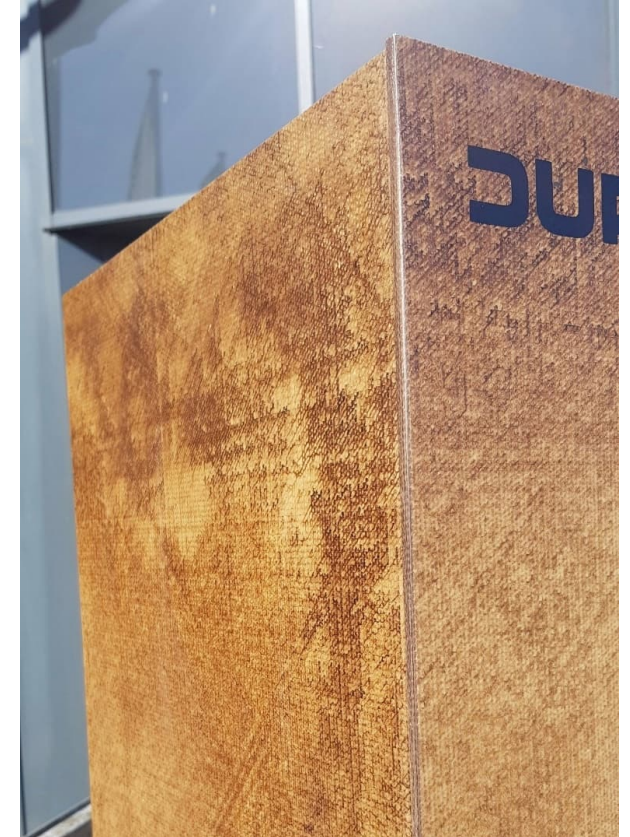
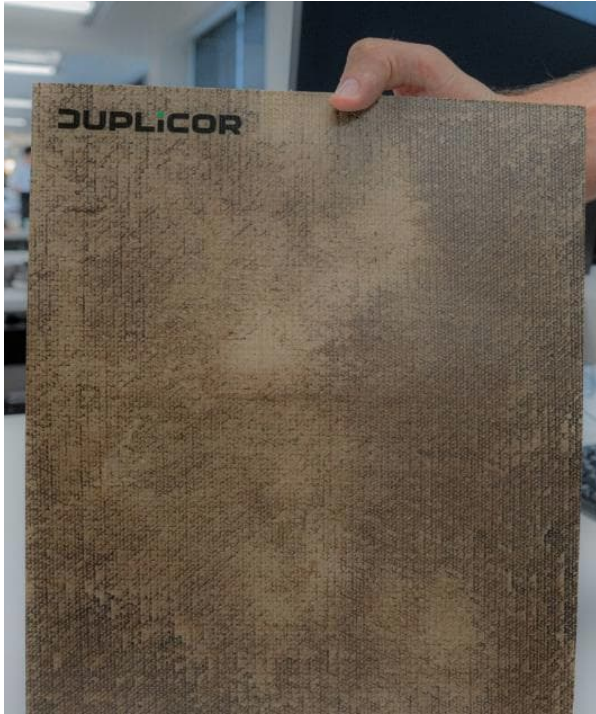
Balkons verdieping 8 en 10



PLP/ARCHITECTURE





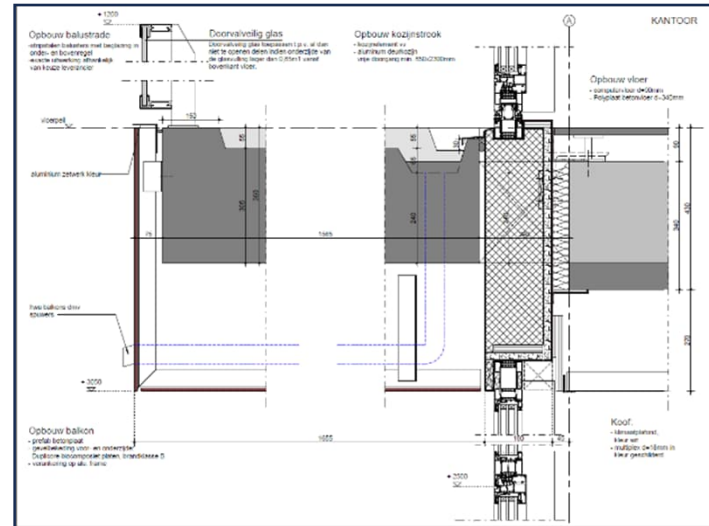


Duplicor

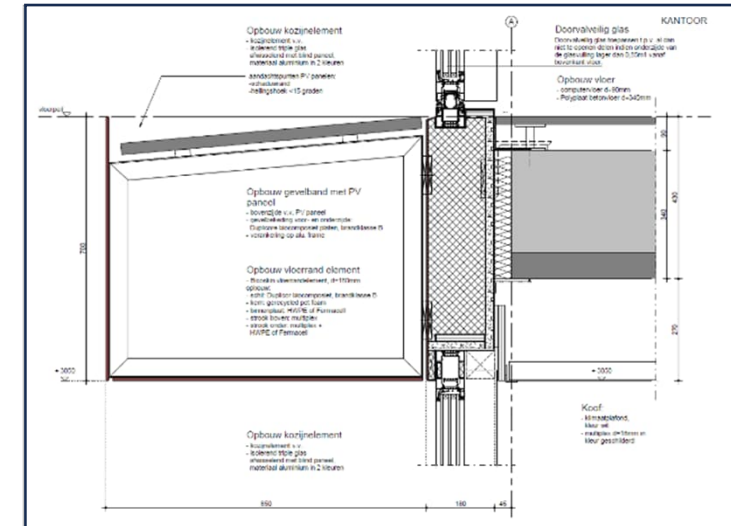
- biohars (agrarisch afval) en glasvezel
- CO₂ negatief bio-based materiaal (CO₂ opslag ca. 4 kg/m²)
- geen onderhoud, behandeld met transparante lak (UV bescherming), vergrijst niet
- brandklasse A mogelijk – zelfde materiaal in plasbrandgebied

materialisering gevels – bio-based paneelbekleding

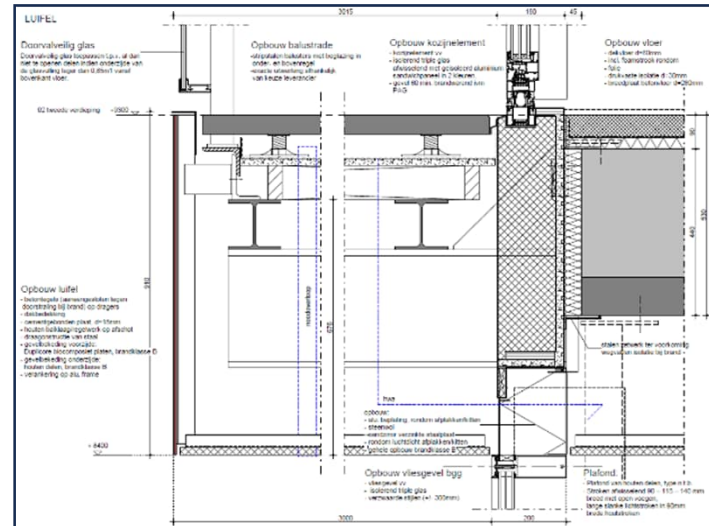
PLP/ARCHITECTURE



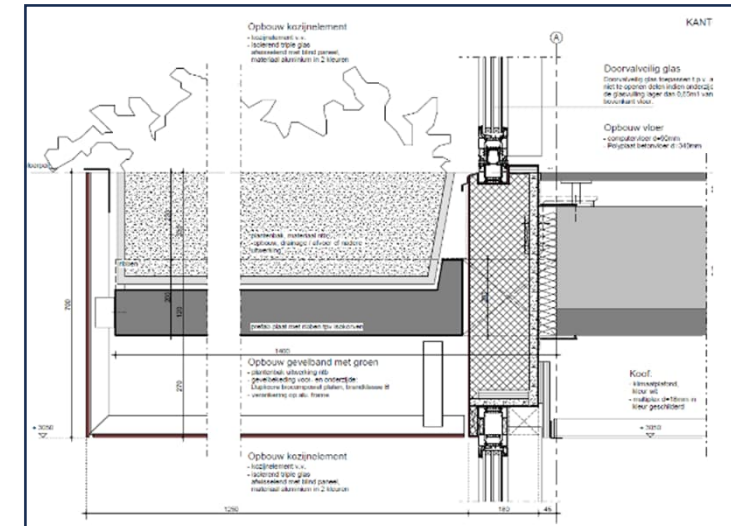
1 – kantoorbalkon



2 – PV uitkraging



3 – luifeldoorsnede



4 – groen balkon

detailering gevels en balkons – inbo

PLP/ARCHITECTURE



PLP/ARCHITECTURE



ZUS

PLP/ARCHITECTURE



PLP/ARCHITECTURE



PLP/ARCHITECTURE



PLP/ARCHITECTURE



