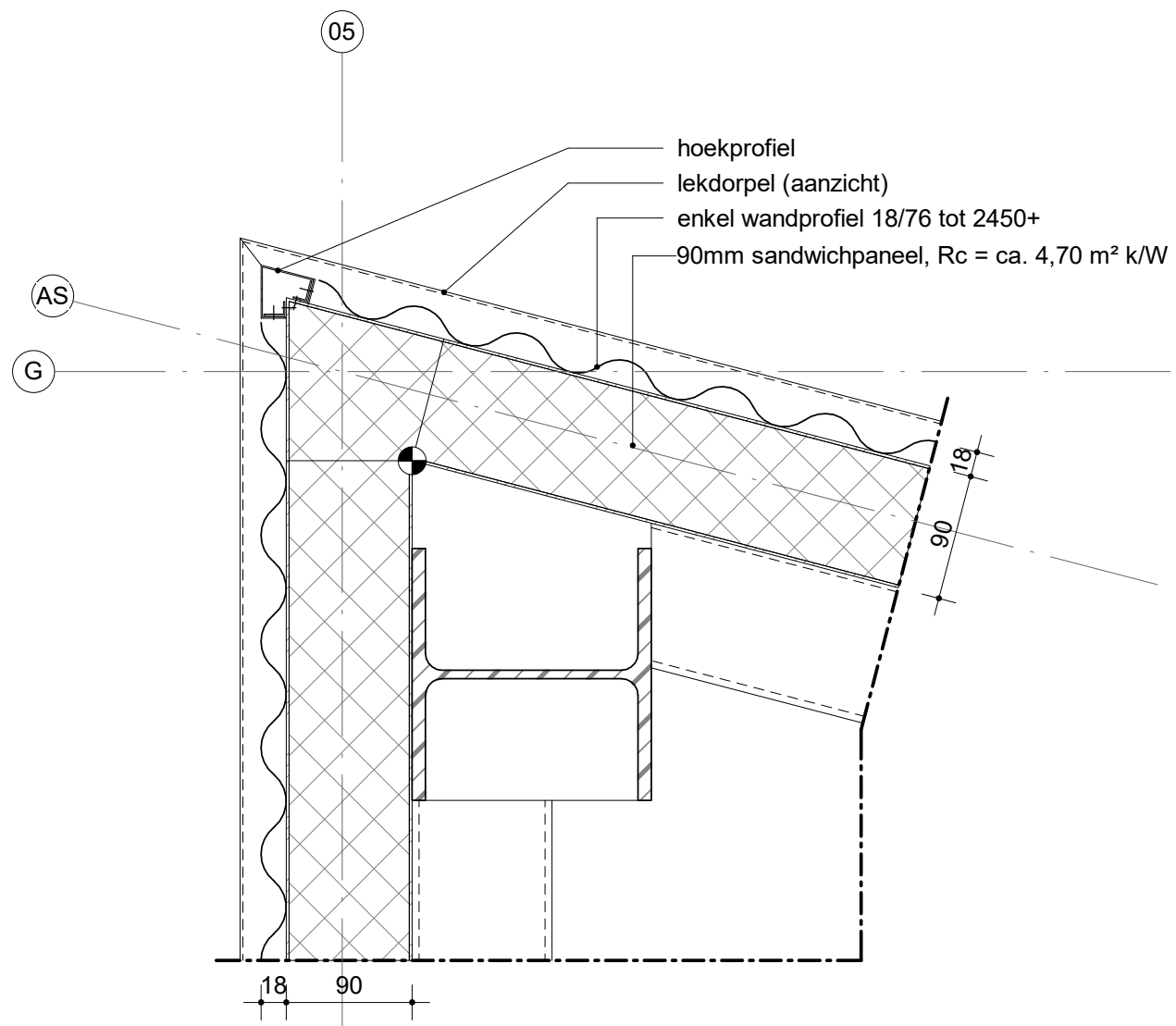


MAATVOERING IN HET WERK CONTROLEREN

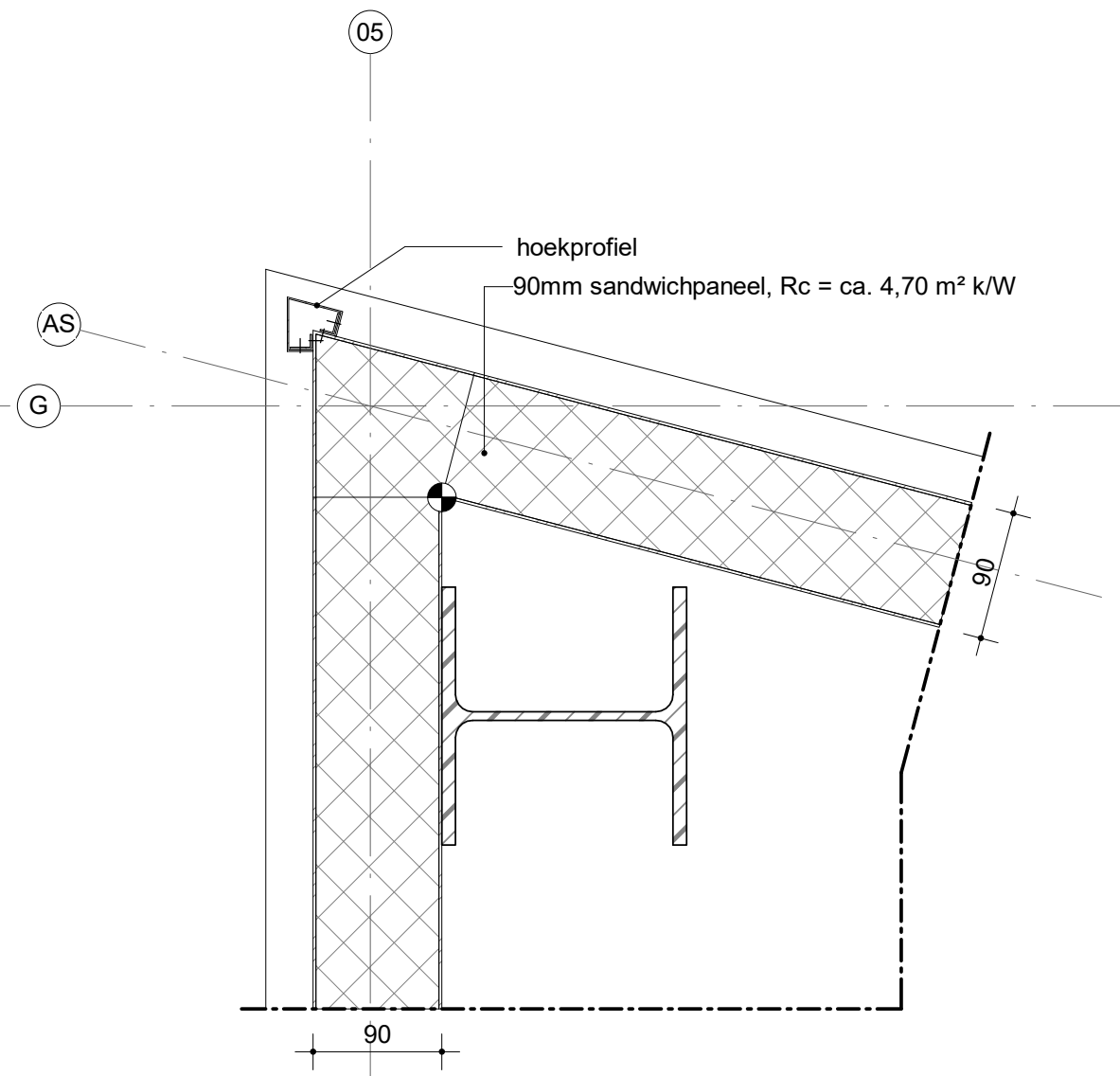
Project : **Uitbreiding Gym XL te Amersfoort**
Adres : **Schiermonnikooghof 21 te
Amersfoort**
Projectnr. : **23-2296**
Tekening : **DO-07**
 DETAILLERING
 DEFINITIEF ONTWERP
Schaal : **1 : 5 (A3)**
Status : **DEFINITIEF**
Datum : **29-11-2023**



Westsingel 9
3811 BA Amersfoort
bureau@vanhoogevest.nl
T 0031 33 4631705

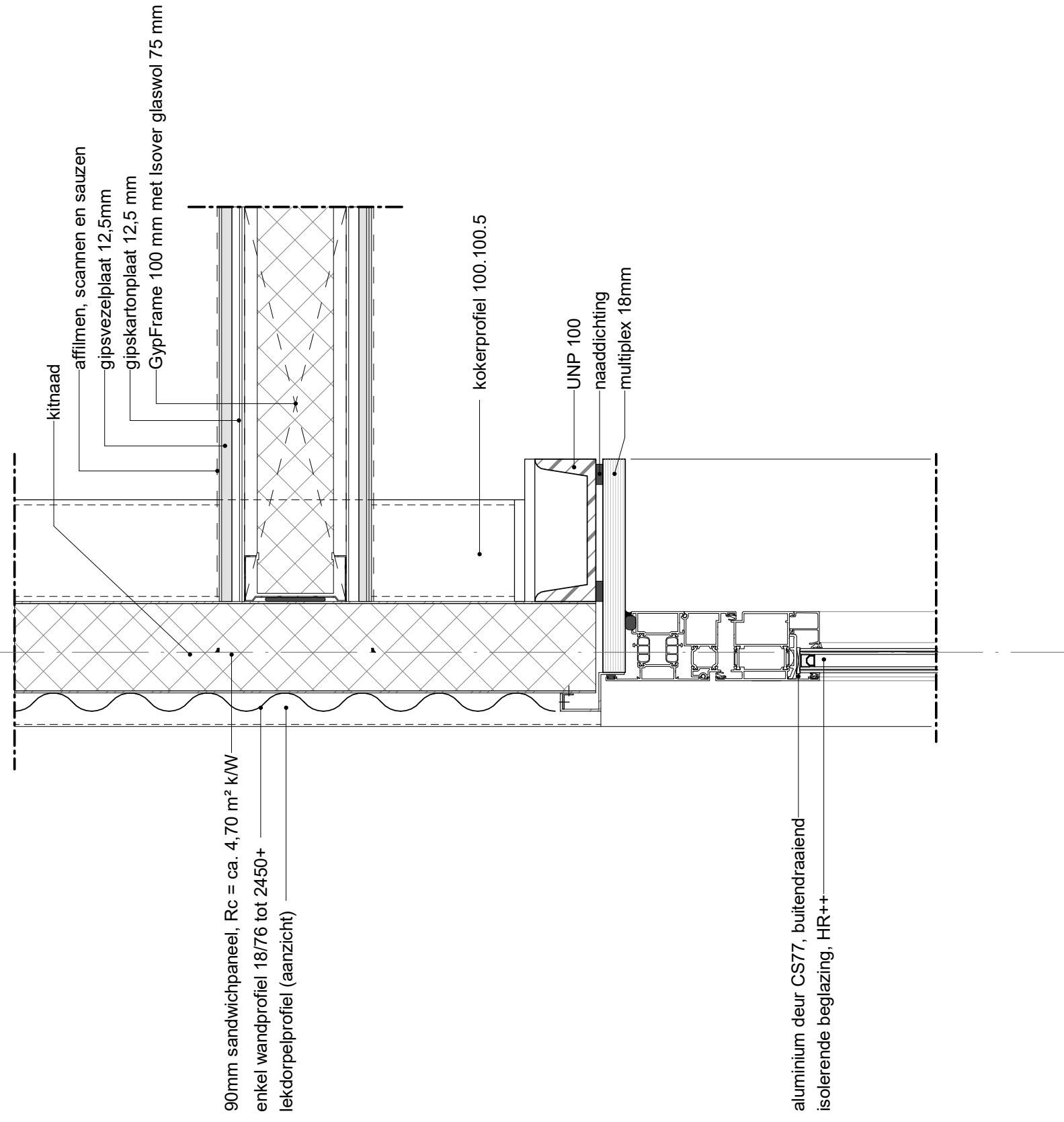


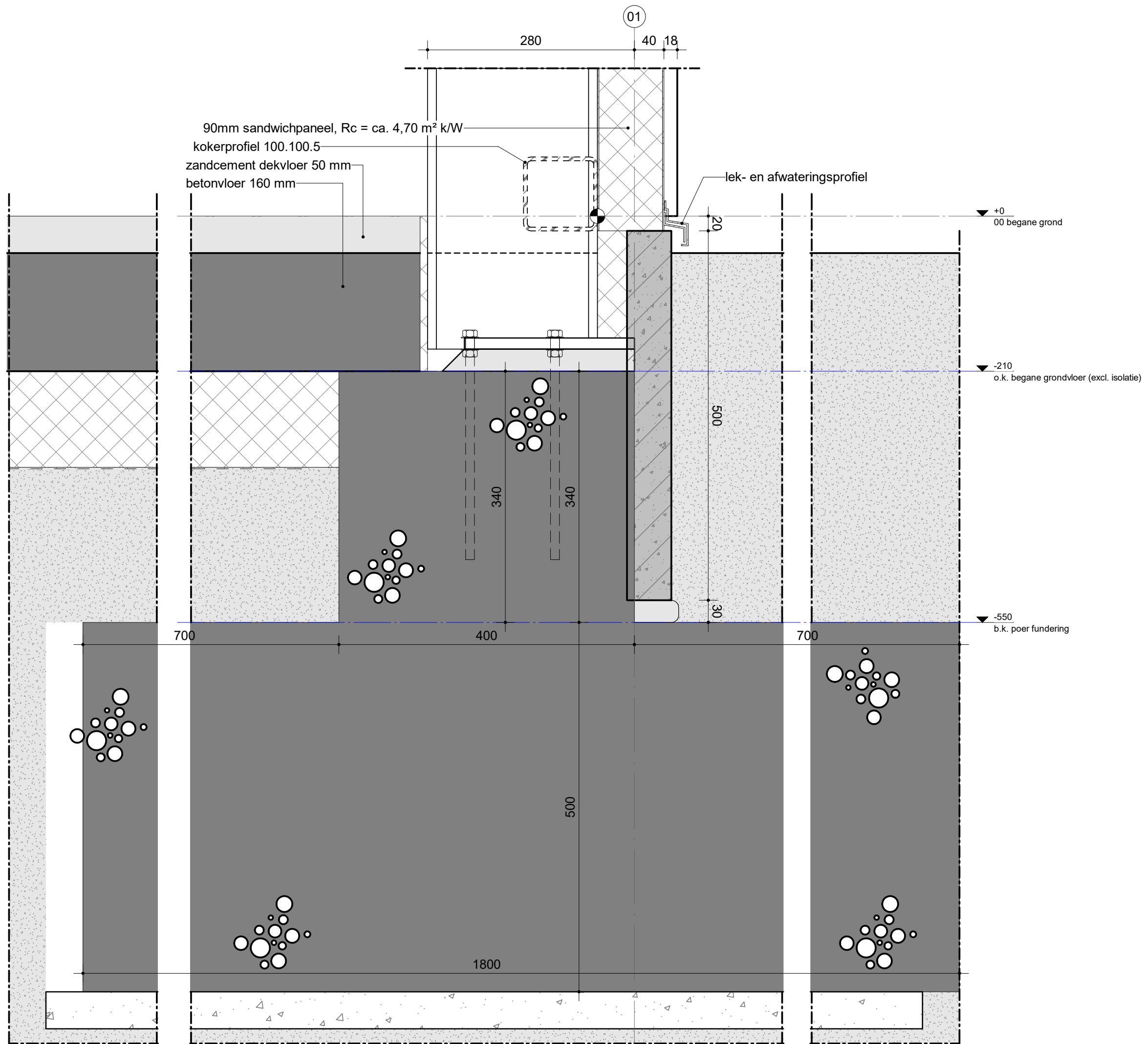
H.01a



H.01b

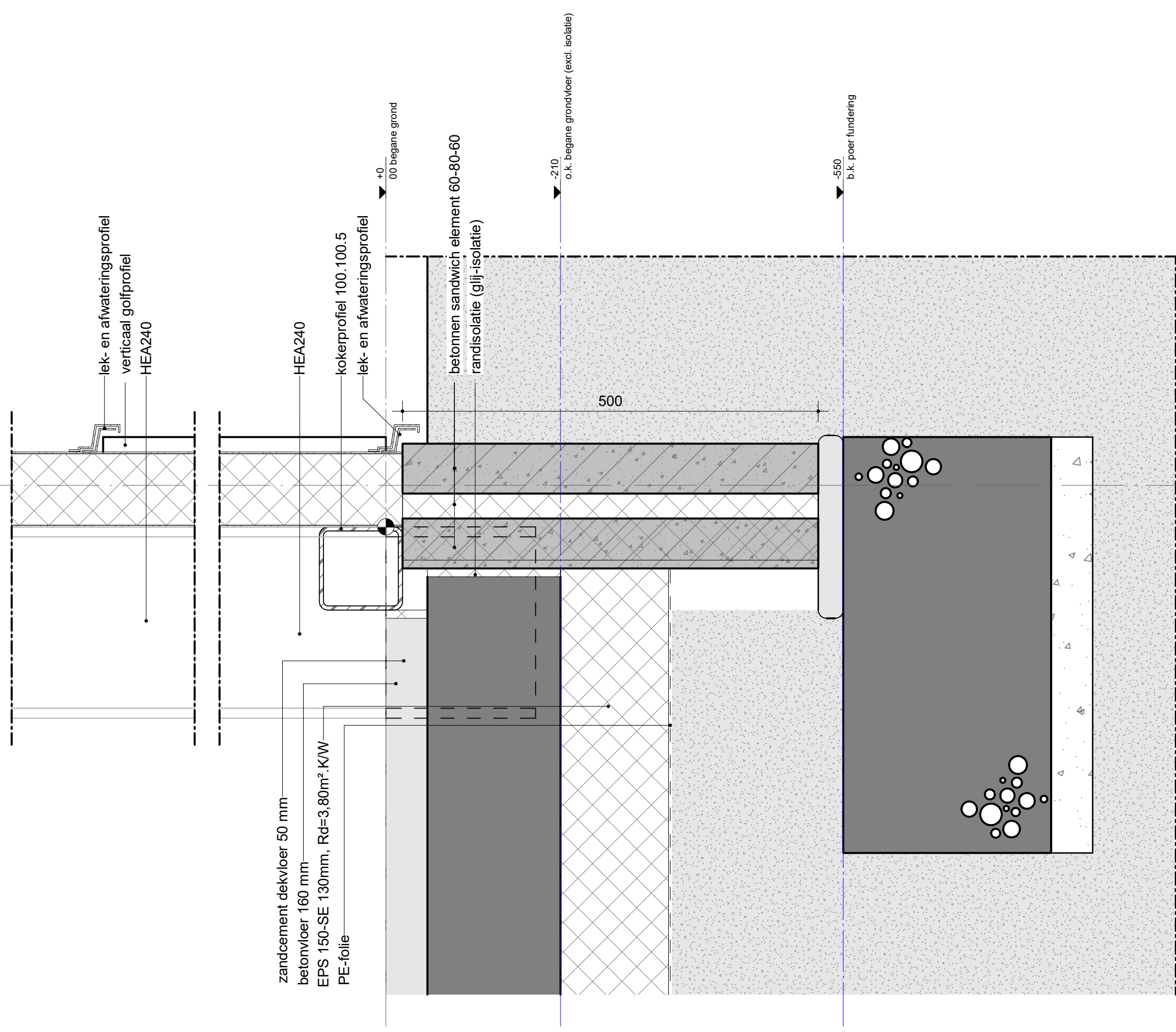
05

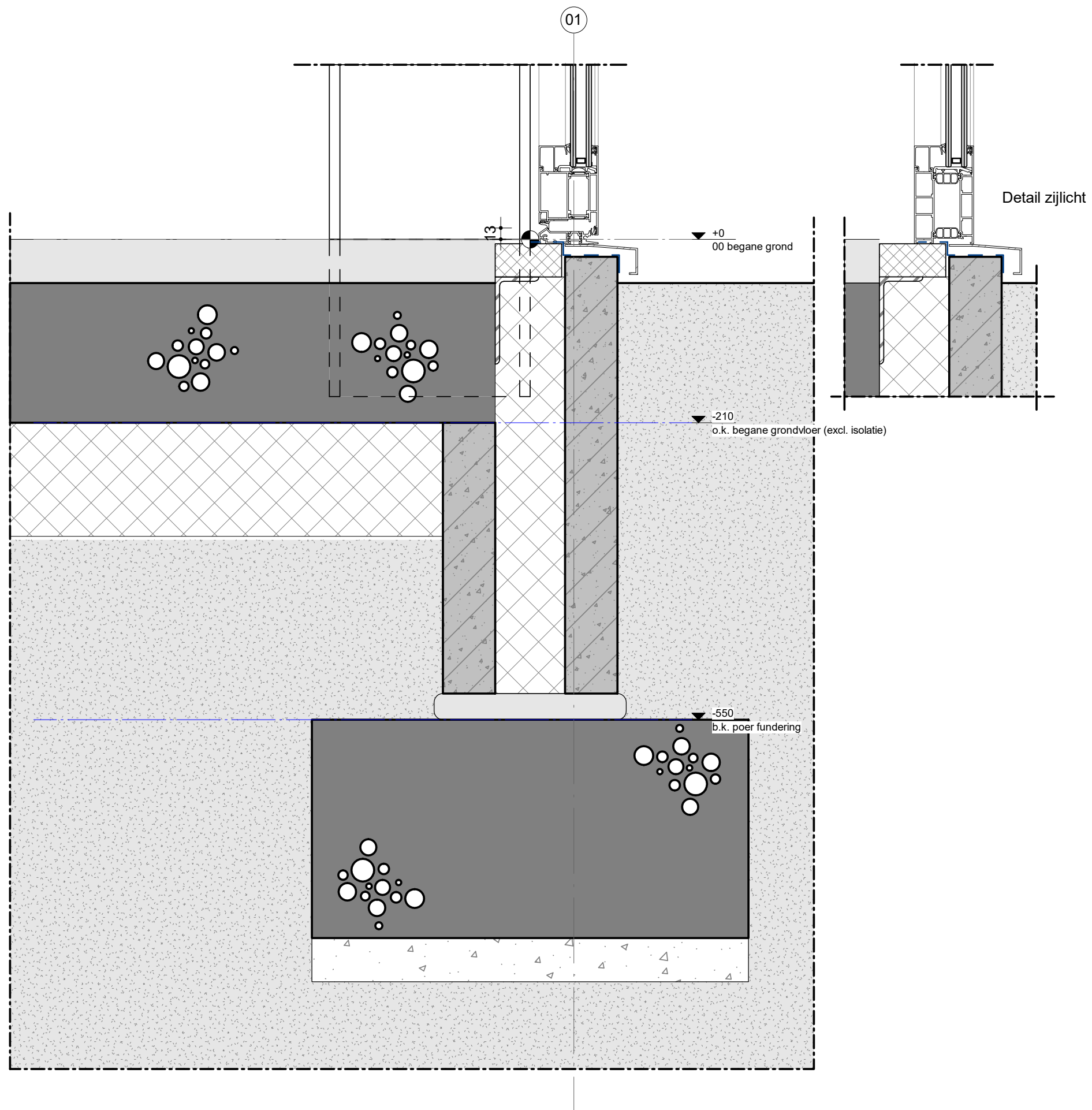


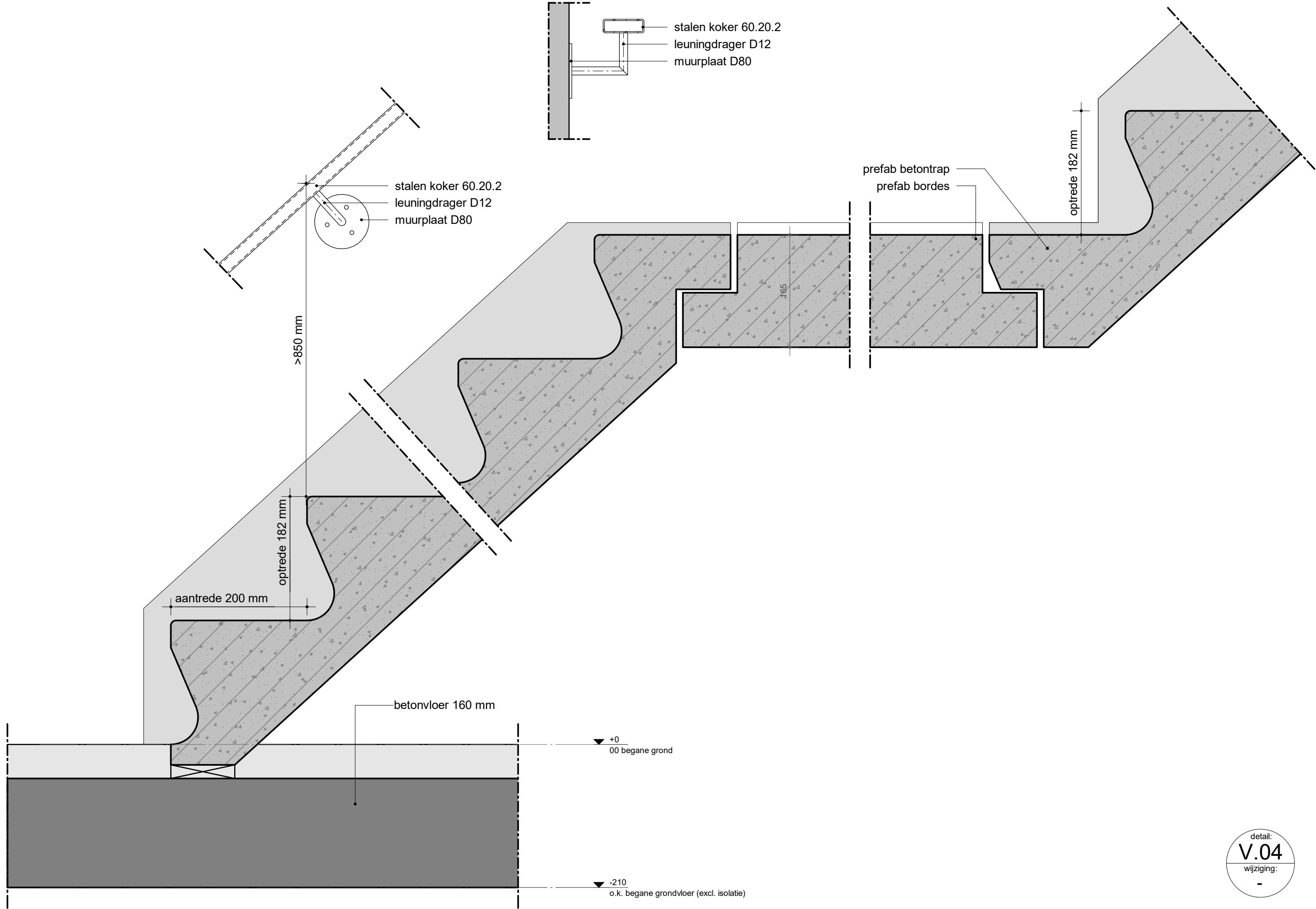
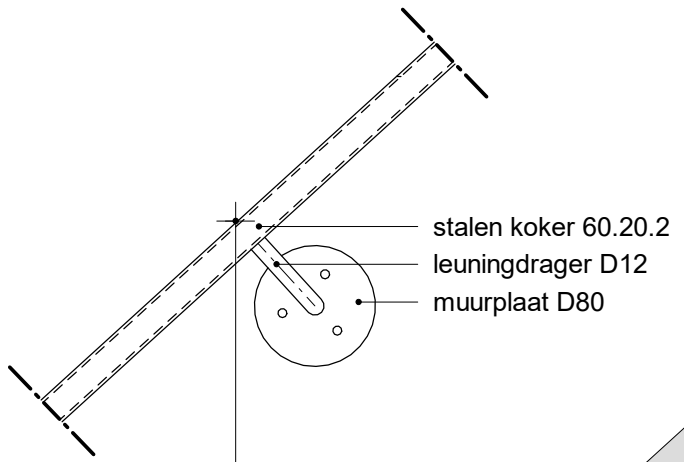
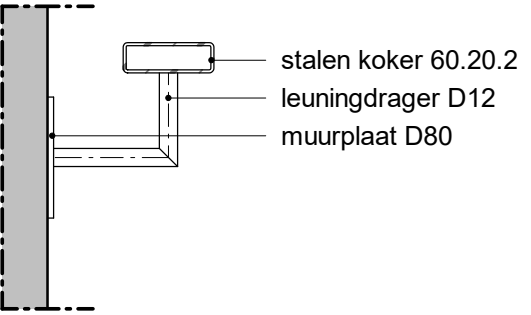


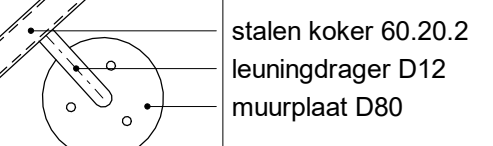
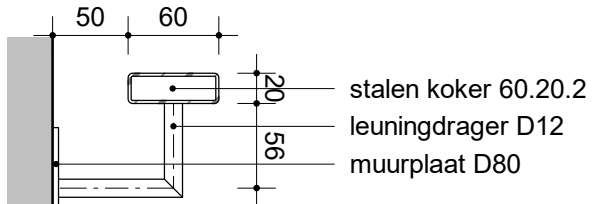
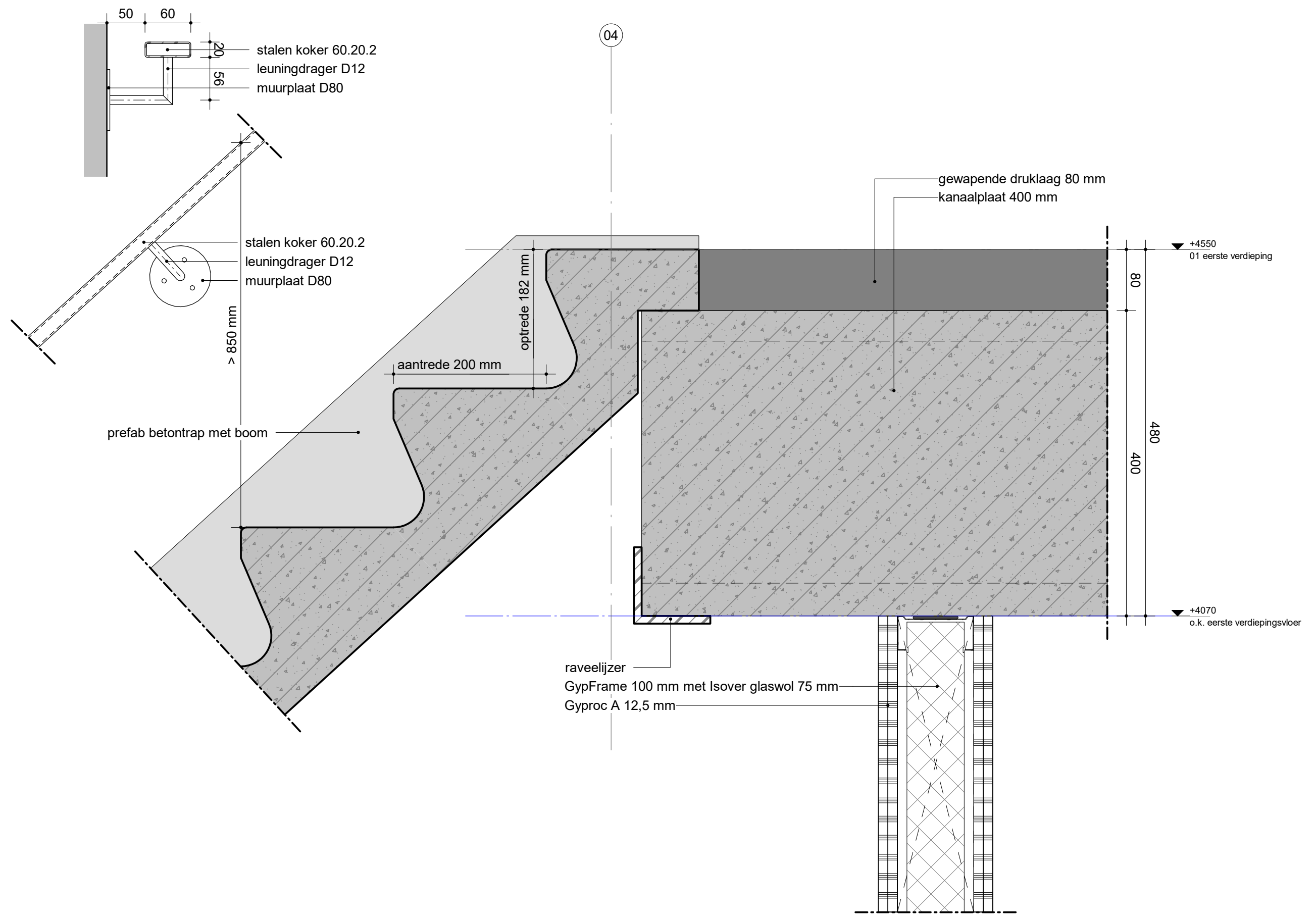
detail:
V.01
 wijziging:
 --

01

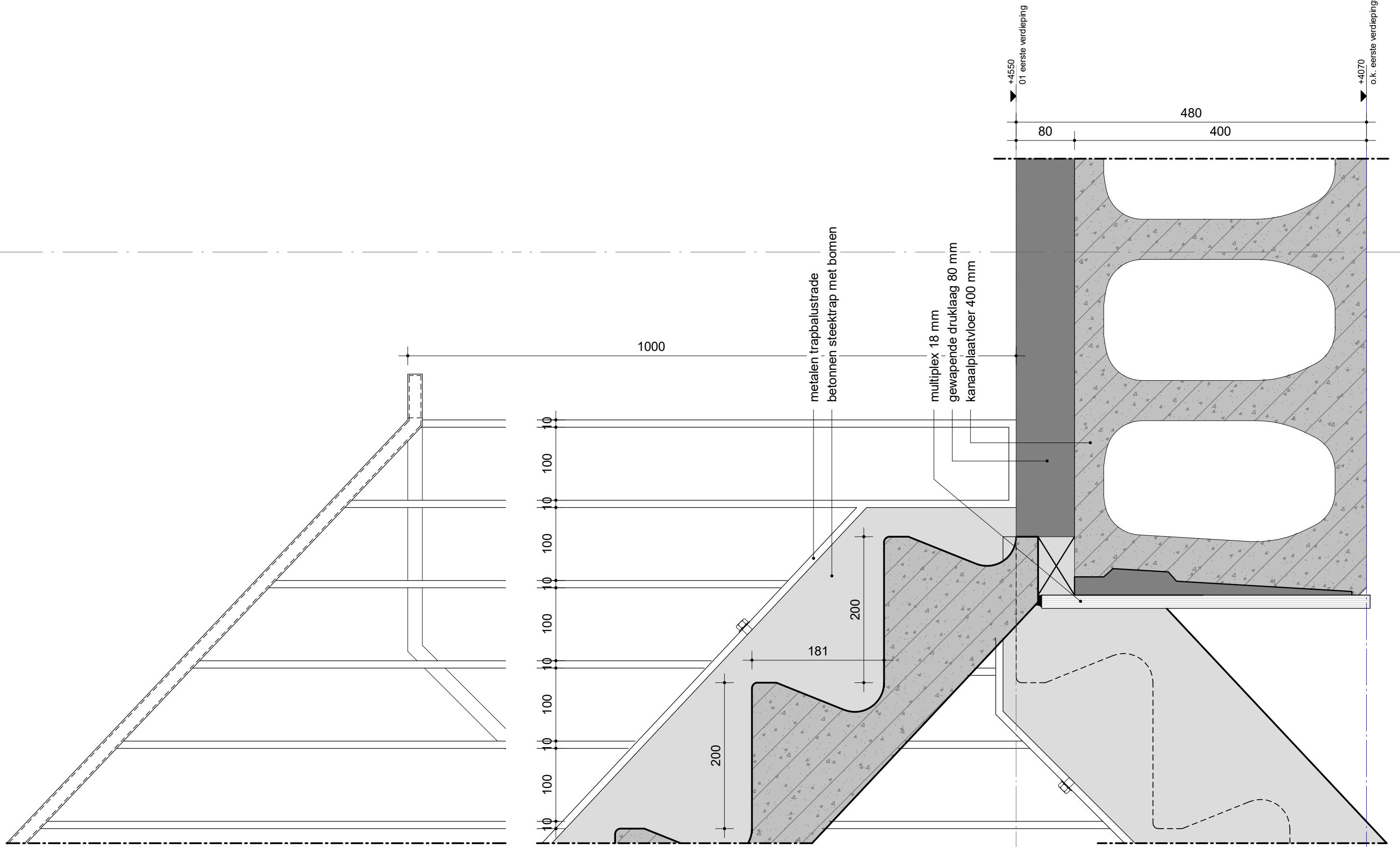








F



01

HEA260, conform opgave constructeur
kanaalplaat 400 mm
gewapende druklaag 80 mm

90mm sandwichpaneel, $R_c = \text{ca. } 4,70 \text{ m}^2 \text{ k/W}$

▼ +4550
01 eerste verdieping

▼ +4070
o.k. eerste verdiepingsvloer

90mm sandwichpaneel, $R_c = \text{ca. } 4,70 \text{ m}^2 \text{ k/W}$
HEA 300, conform opgave constructeur

01

▼ +14400
o.k. dakvloer +800

aluminium afdekkap
EPDM dakbedekking
Therma TR26 Platdak Plaat $R_d=6,45\text{m}^2\text{K/W}$
dampremmende folie
stalen dakplaat SAB 158R+/750

▼ +14110
b.k. dakrand paneel 0 punt

Therma TR26 Platdak Plaat $R_d=6,45\text{m}^2\text{K/W}$
dampremmende folie
stalen dakplaat SAB 158R+/750

HEA160
90mm sandwichpaneel, $R_c = \text{ca. } 4,70\text{ m}^2\text{ k/W}$

▼ +13600
o.k. dakvloer 0 punt

detail:
V.08
wijziging:
--

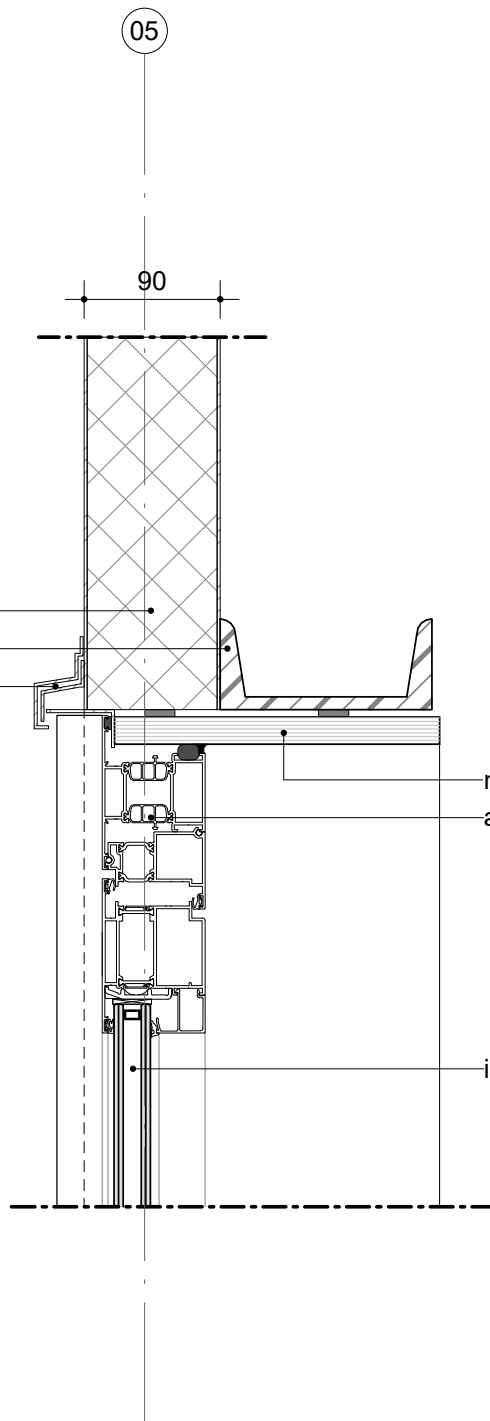
05

90

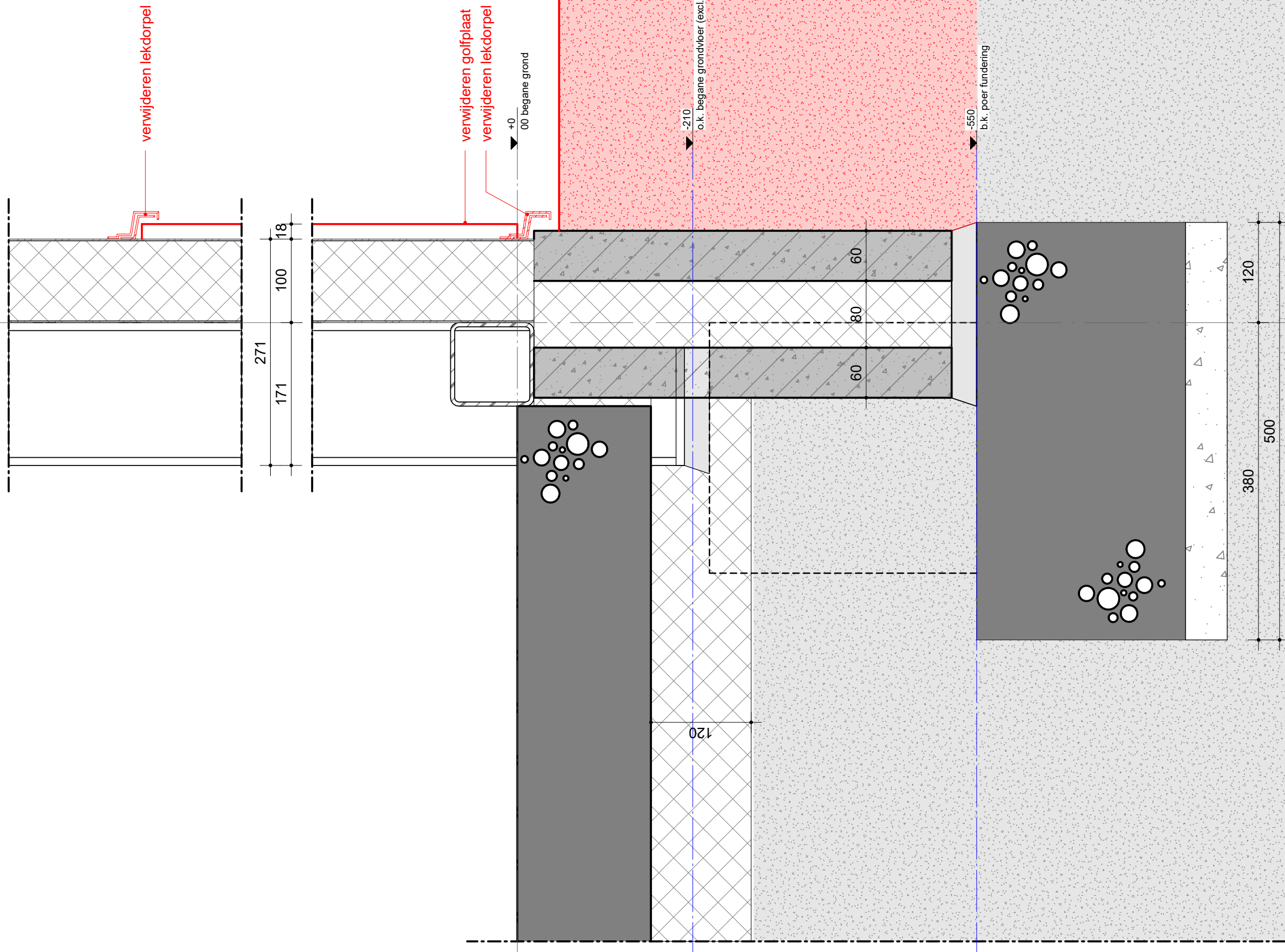
90mm sandwichpaneel, $R_c = \text{ca. } 4,70 \text{ m}^2 \text{ k/W}$
UNP 100
lek- en afwateringsprofiel

multiplex 18mm
aluminium deur CS77, buitendraaiend

isolerende beglazing, HR++

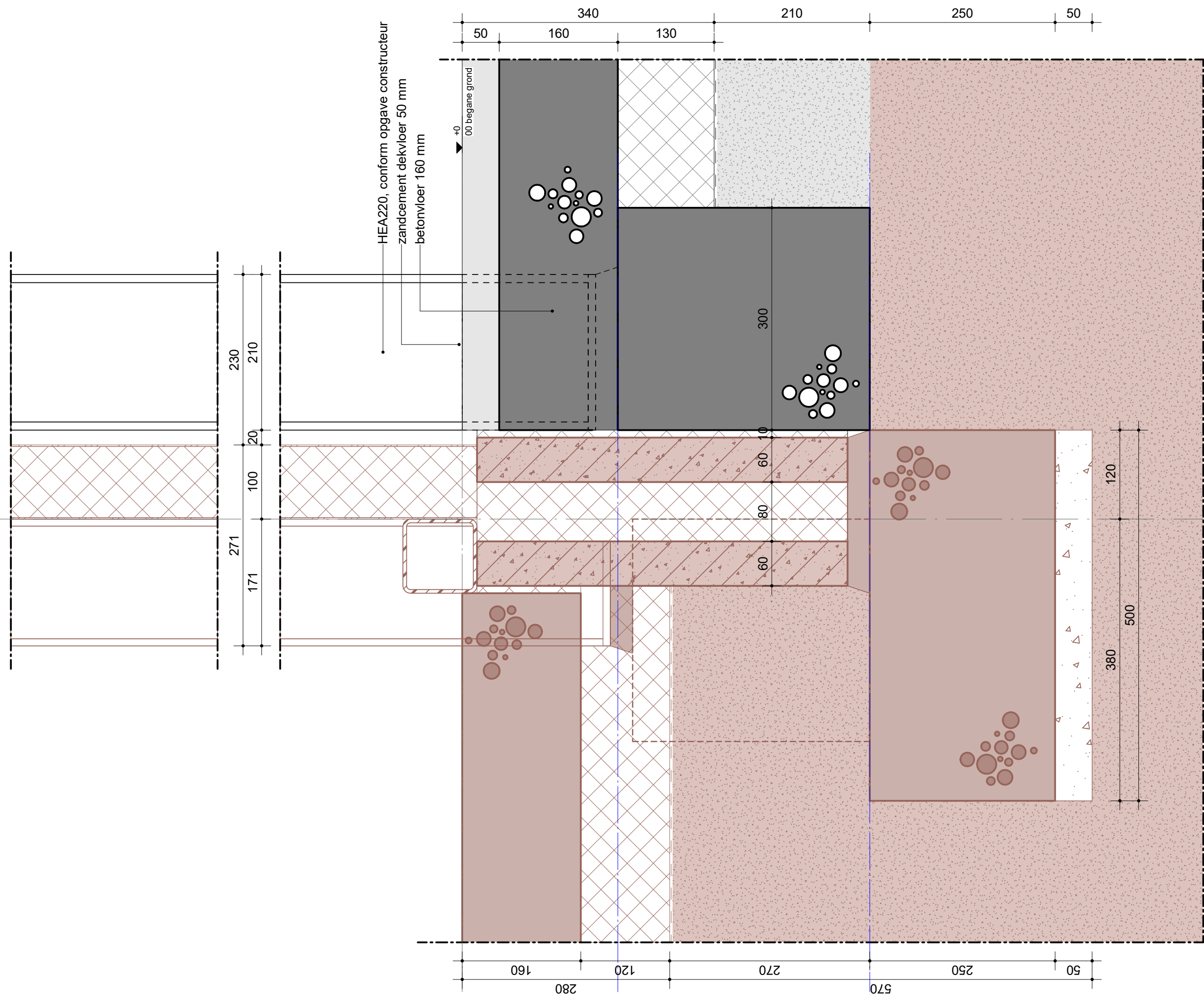


BT



detail:
V.10b
wijziging: -

BT



(BT)

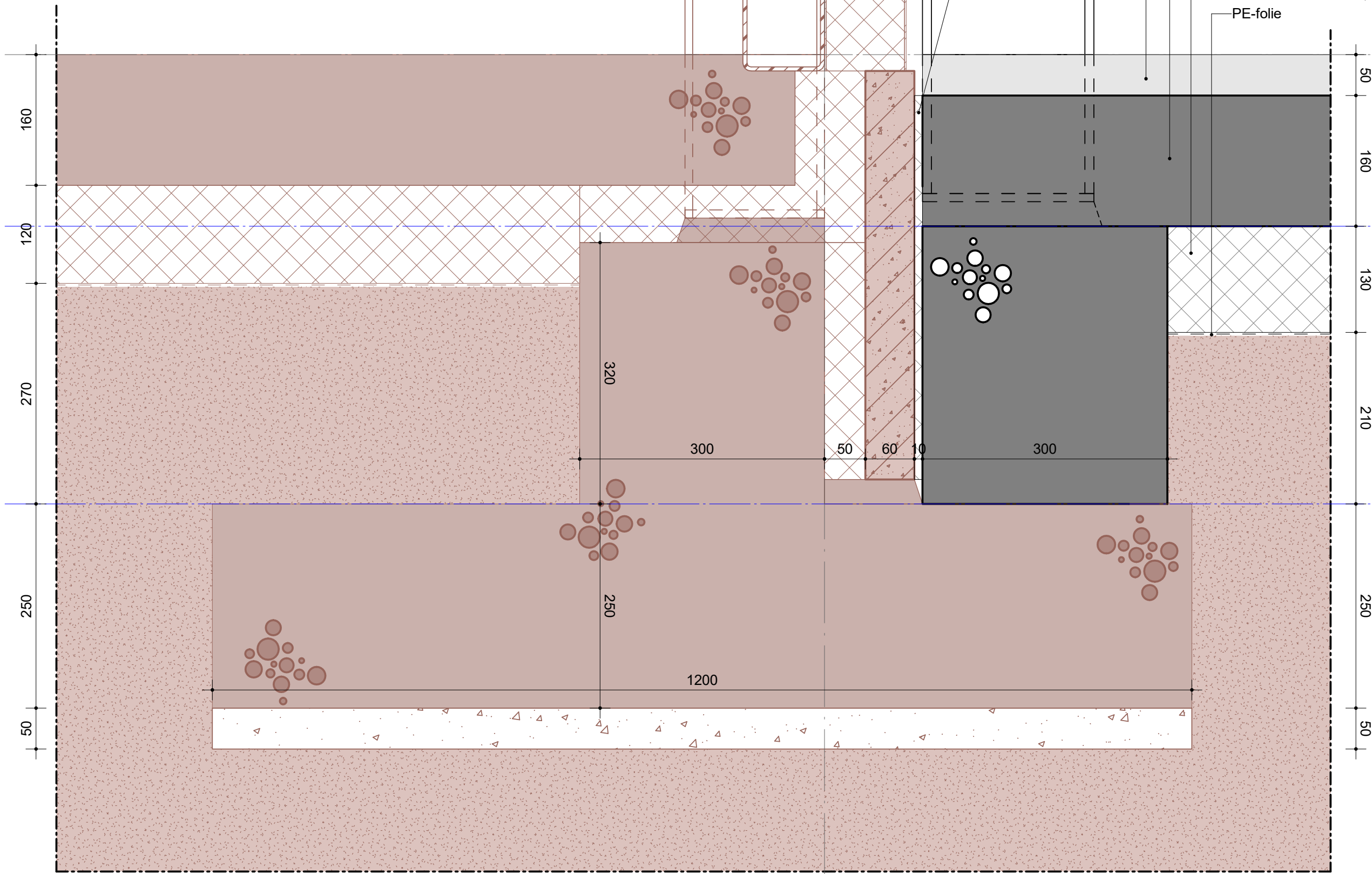
171 100 20 210

- randisolatie (glij-isolatie)
- HEA220, conform opgave constructeur
- zandcement dekvloer 50 mm
- betonvloer 160 mm
- EPS 150-SE 130mm, $R_d=3,80\text{m}^2\cdot\text{K/W}$
- PE-folie

+0
o.o. begane grond

-210
o.k. begane grondvloer (excl. isolatie)

-550
b.k. poer fundering



detail:
V.11
wijziging:
-

C

▼ +15783
b.k. dakrand paneel +1600

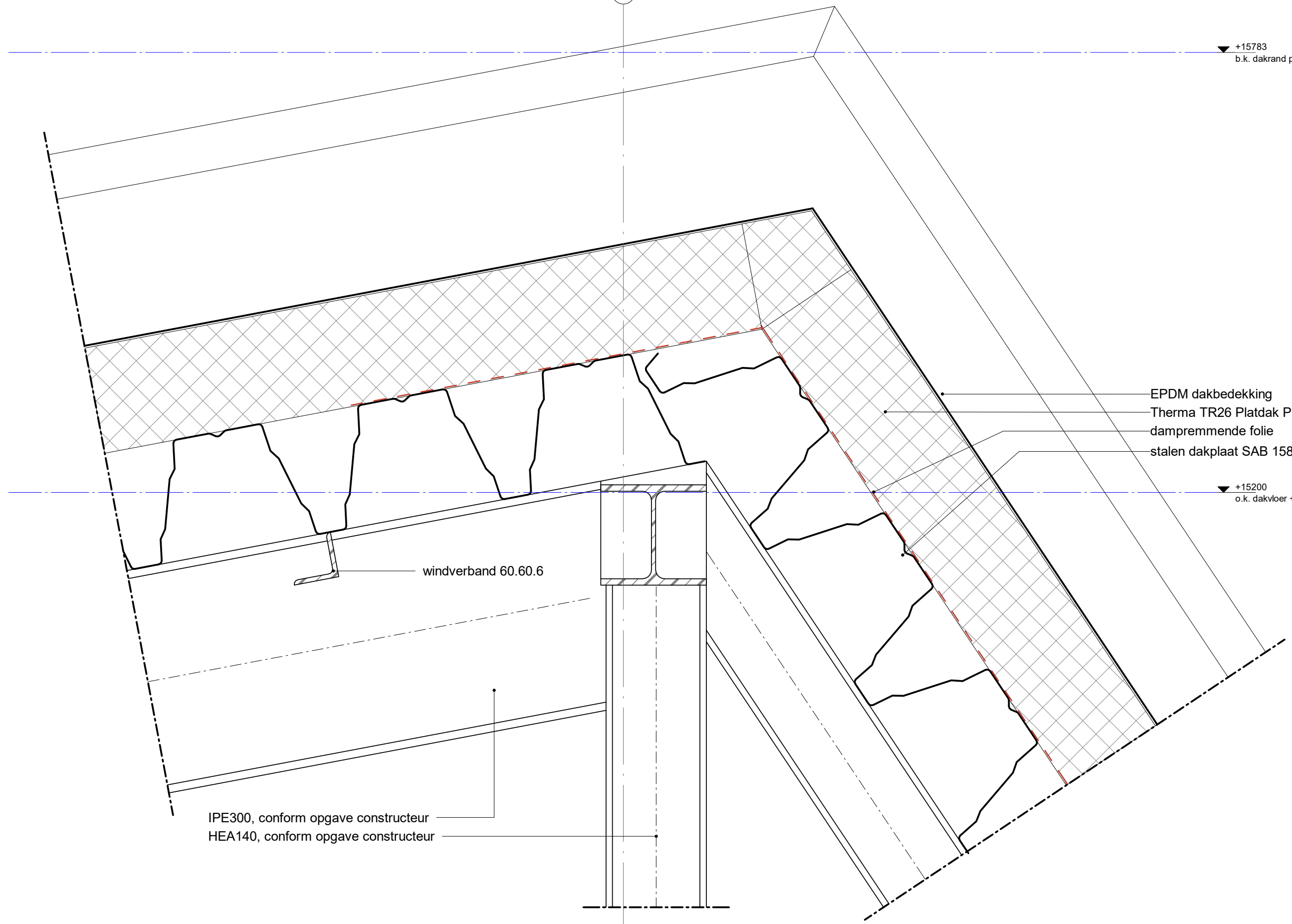
- EPDM dakbedekking
- Therma TR26 Platdak Plaat Rd=6,45m²K/W
- dampremmende folie
- stalen dakplaat SAB 158R+/750

▼ +15200
o.k. dakvloer +1600

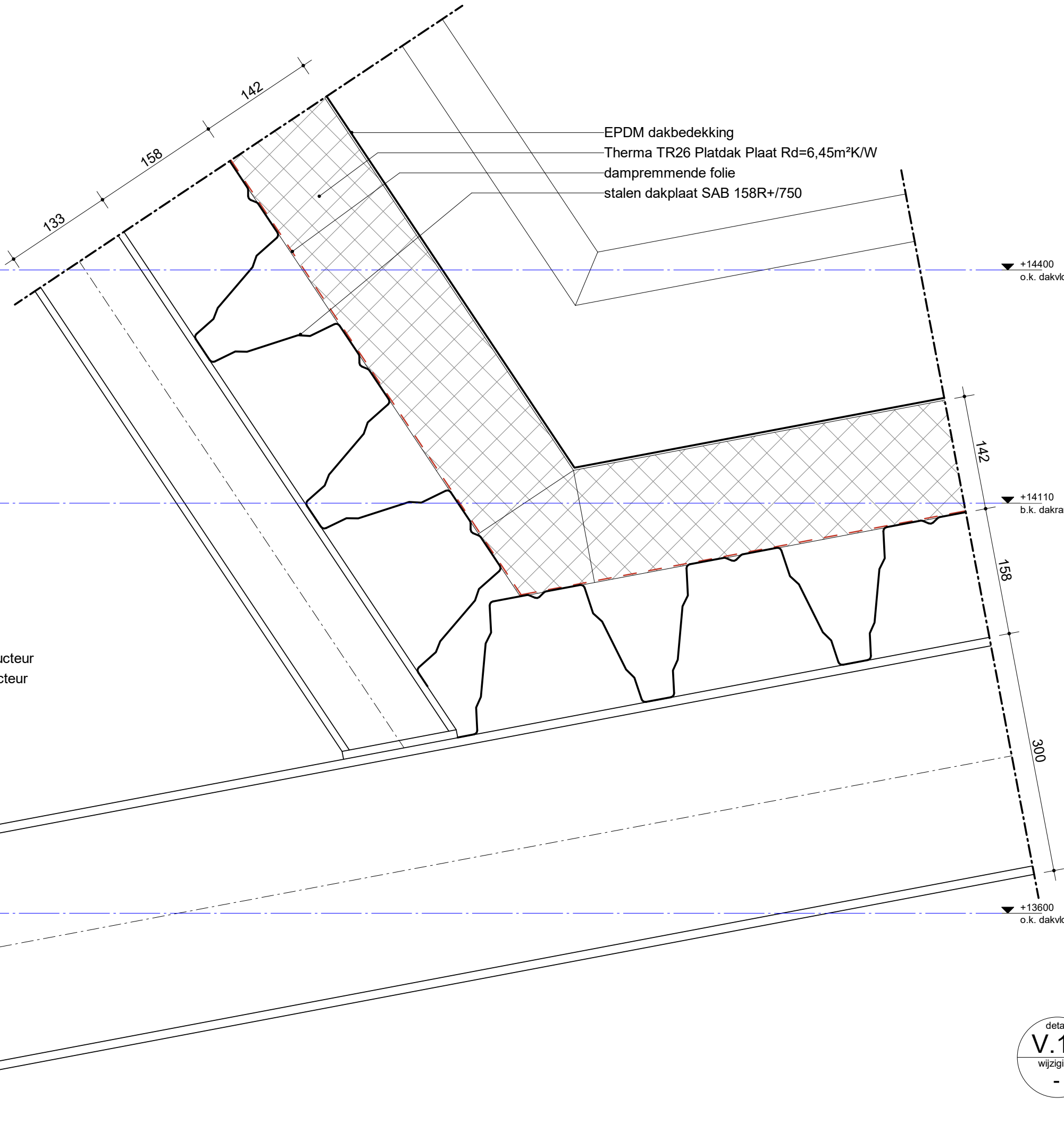
windverband 60.60.6

IPE300, conform opgave constructeur
HEA140, conform opgave constructeur

detail:
V.12
wijziging:
-



C



- EPDM dakbedekking
- Therma TR26 Platdak Plaat Rd=6,45m²K/W
- dampremmende folie
- stalen dakplaat SAB 158R+/750

- HEA140, conform opgave constructeur
- IPE300, conform opgave constructeur

+14400
o.k. dakvloer +800

+14110
b.k. dakrand paneel 0 punt

+13600
o.k. dakvloer 0 punt

detail:
V.13
wijziging:
-

BT A

90 210

90mm sandwichpaneel, Rc = ca. 4,70 m² kW
lek- en afwateringsprofiel
EPDM dakbedekking

HEA220, conform opgave constructeur

bestaande dakrand verwijderen
dakbedekking, bestaand
dakisolatie, bestaand
stalen dakplaat, bestaand
staalconstructie, bestaand

bestaand sandwich paneel, 100mm

+8350
02 Tweede verdieping

+8200

+7870
o.k. Tweede verdiepingvloer

171 100 20 210