

Chamfer

Remark \*\*:

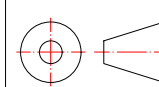
Chamfer 28 x 84 for the mid plate

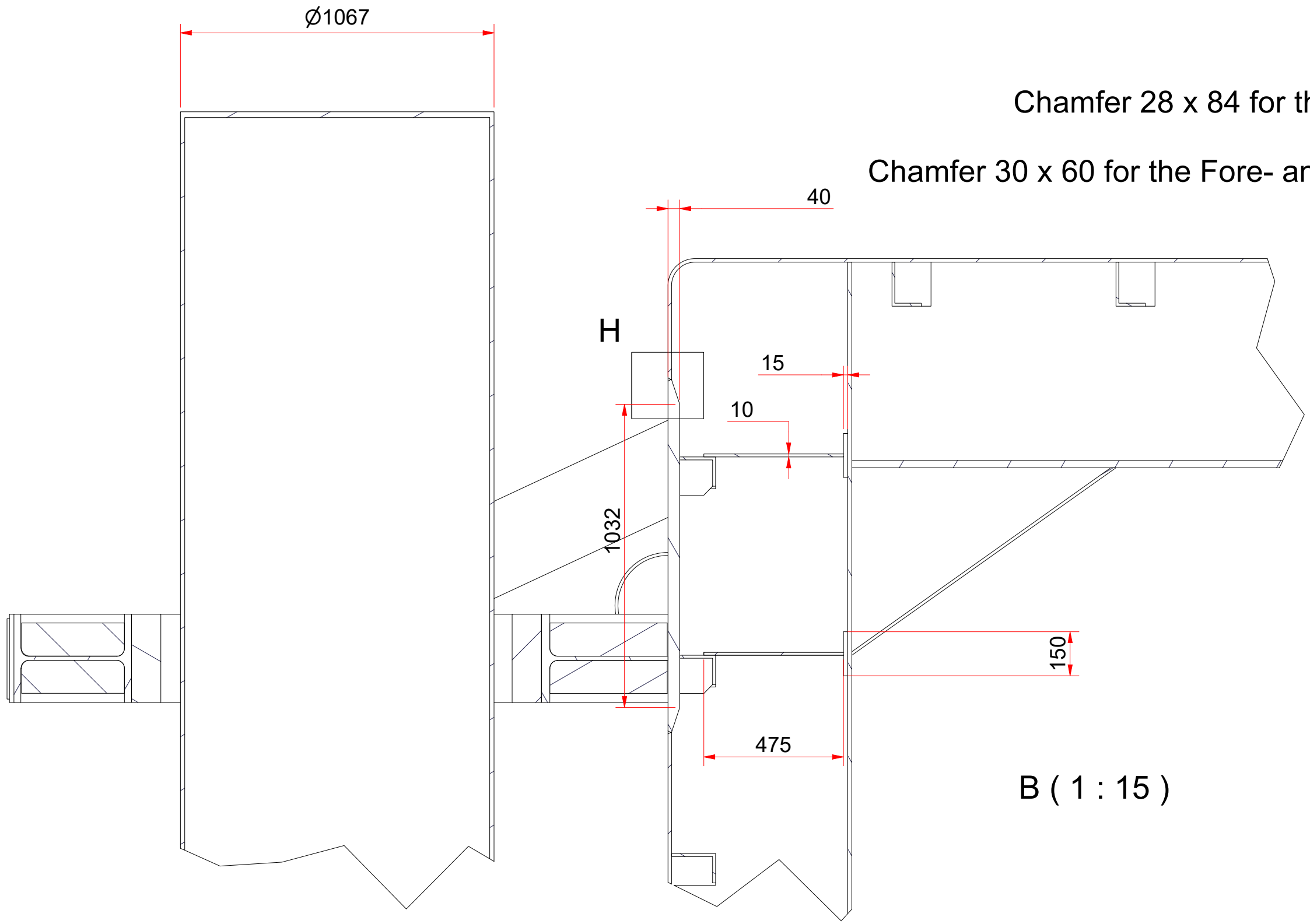
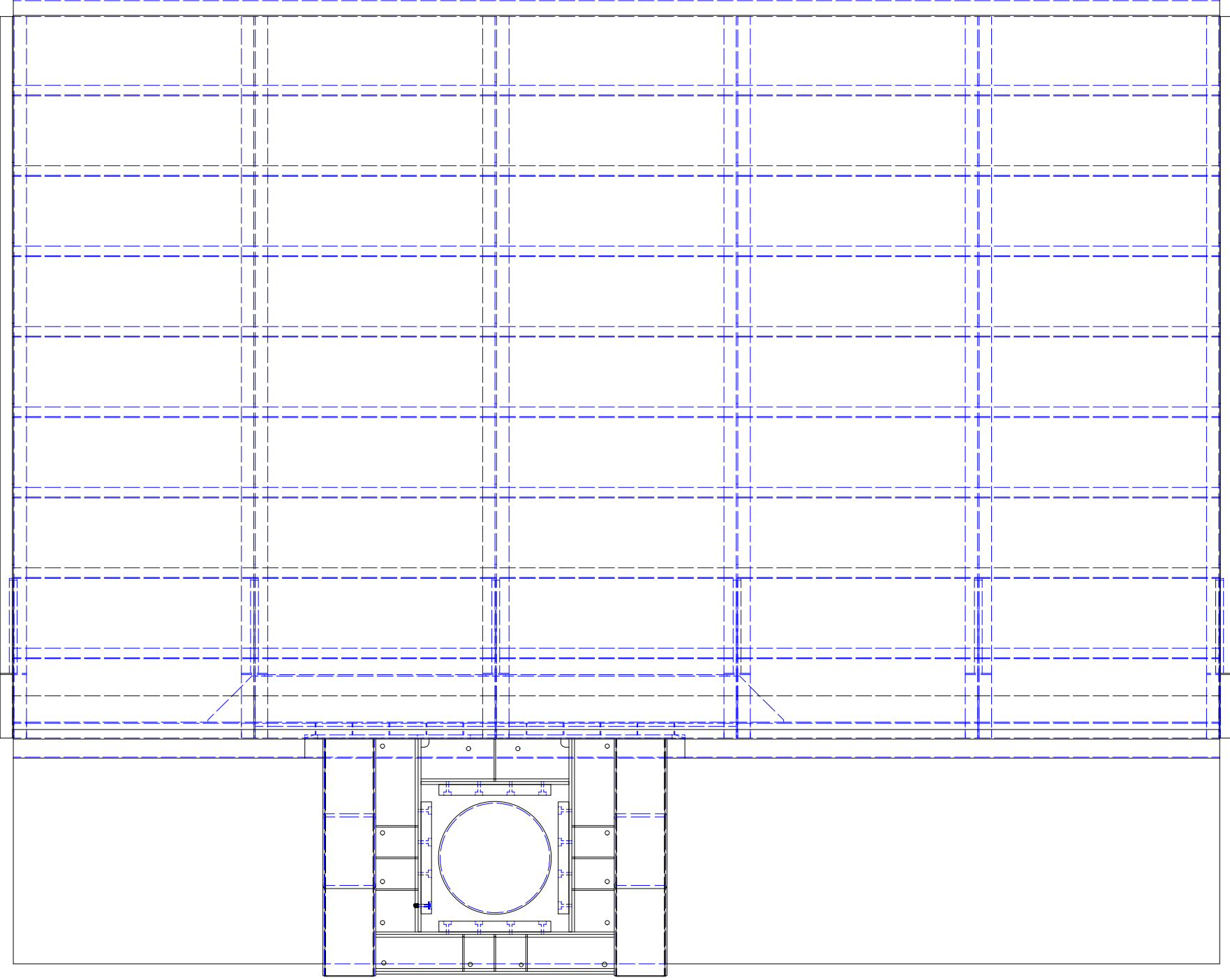
Chamfer 30 x 60 for the Fore- and Aft plates

Dichtlassen na aanbrengen  
Collar

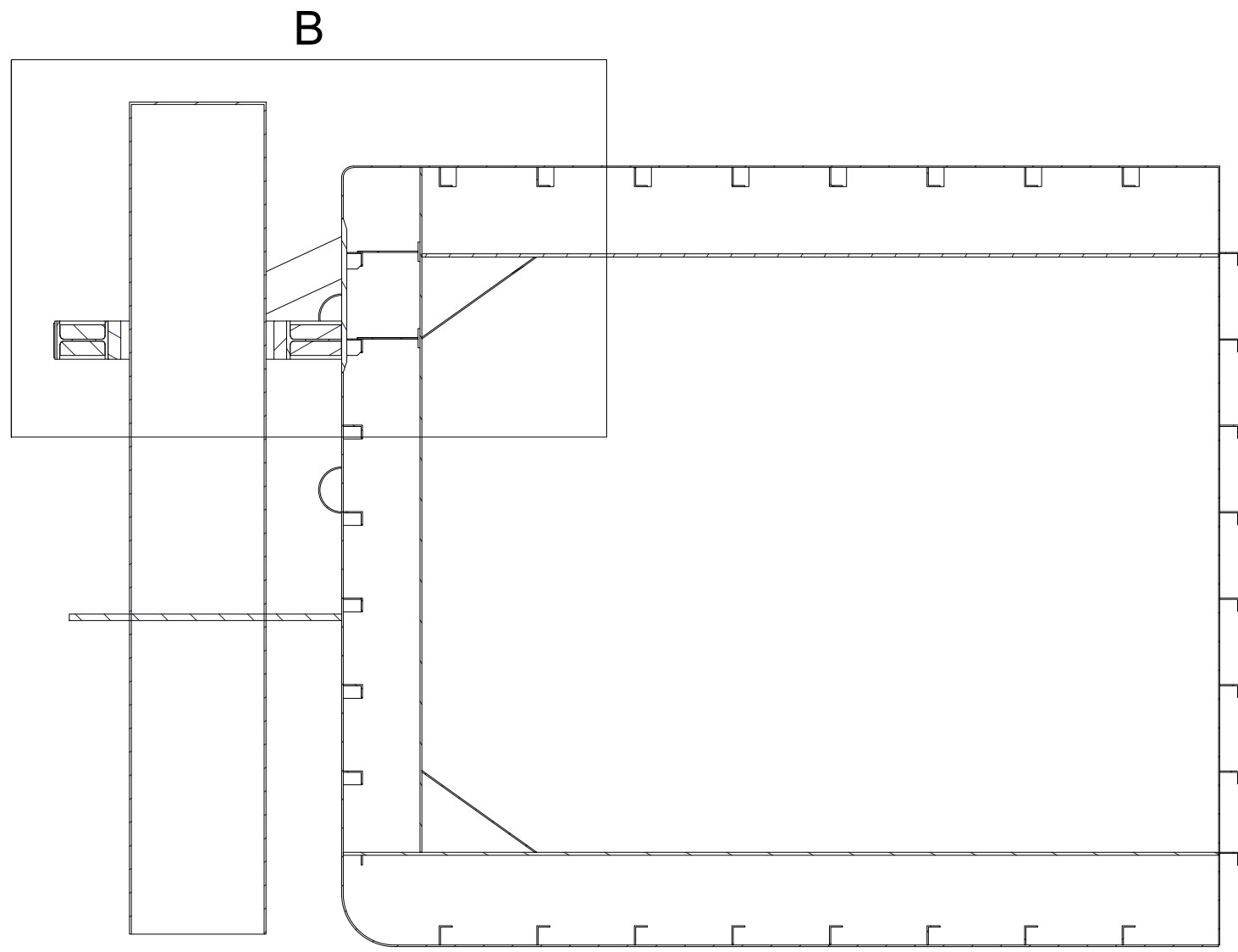
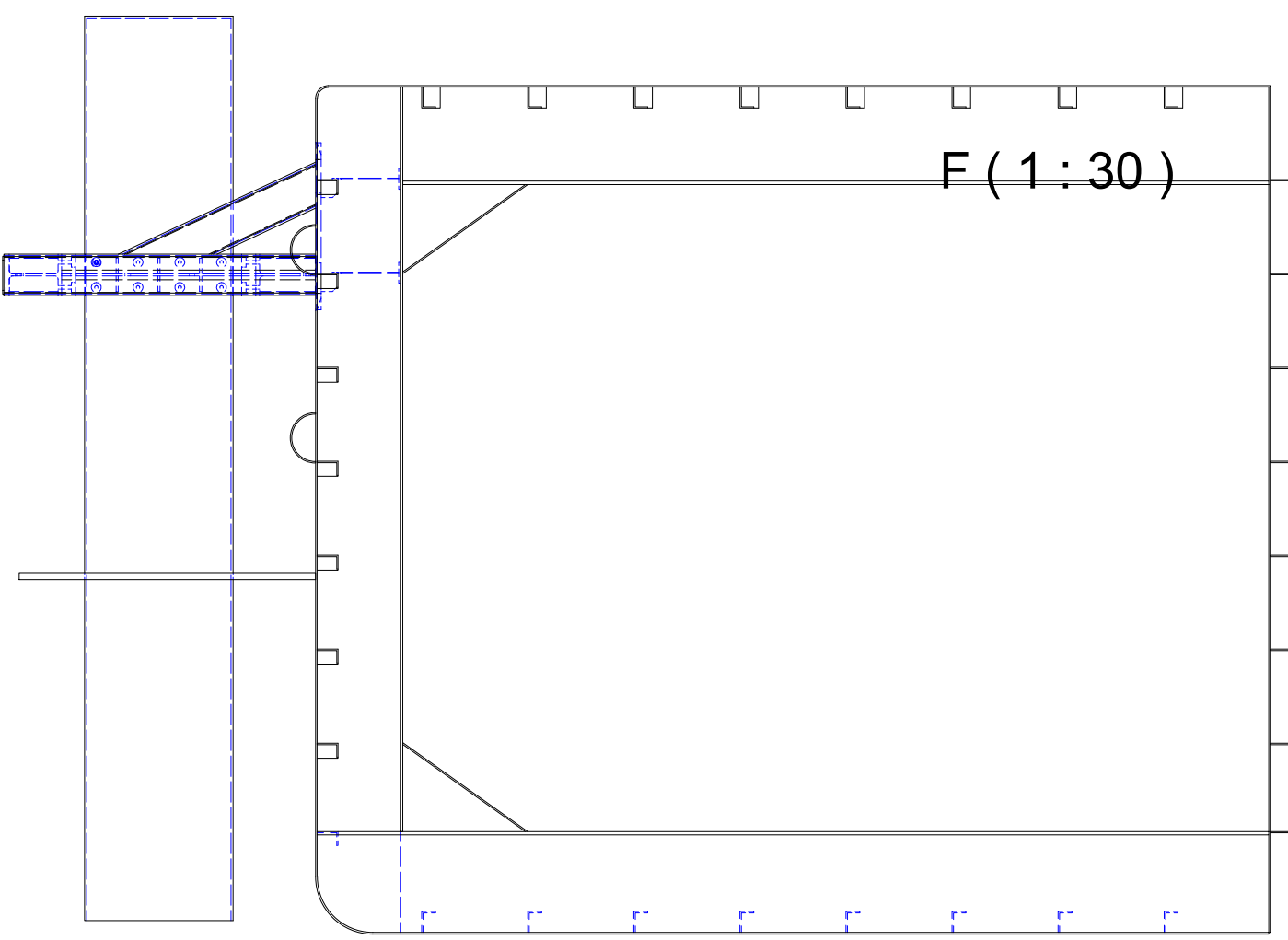
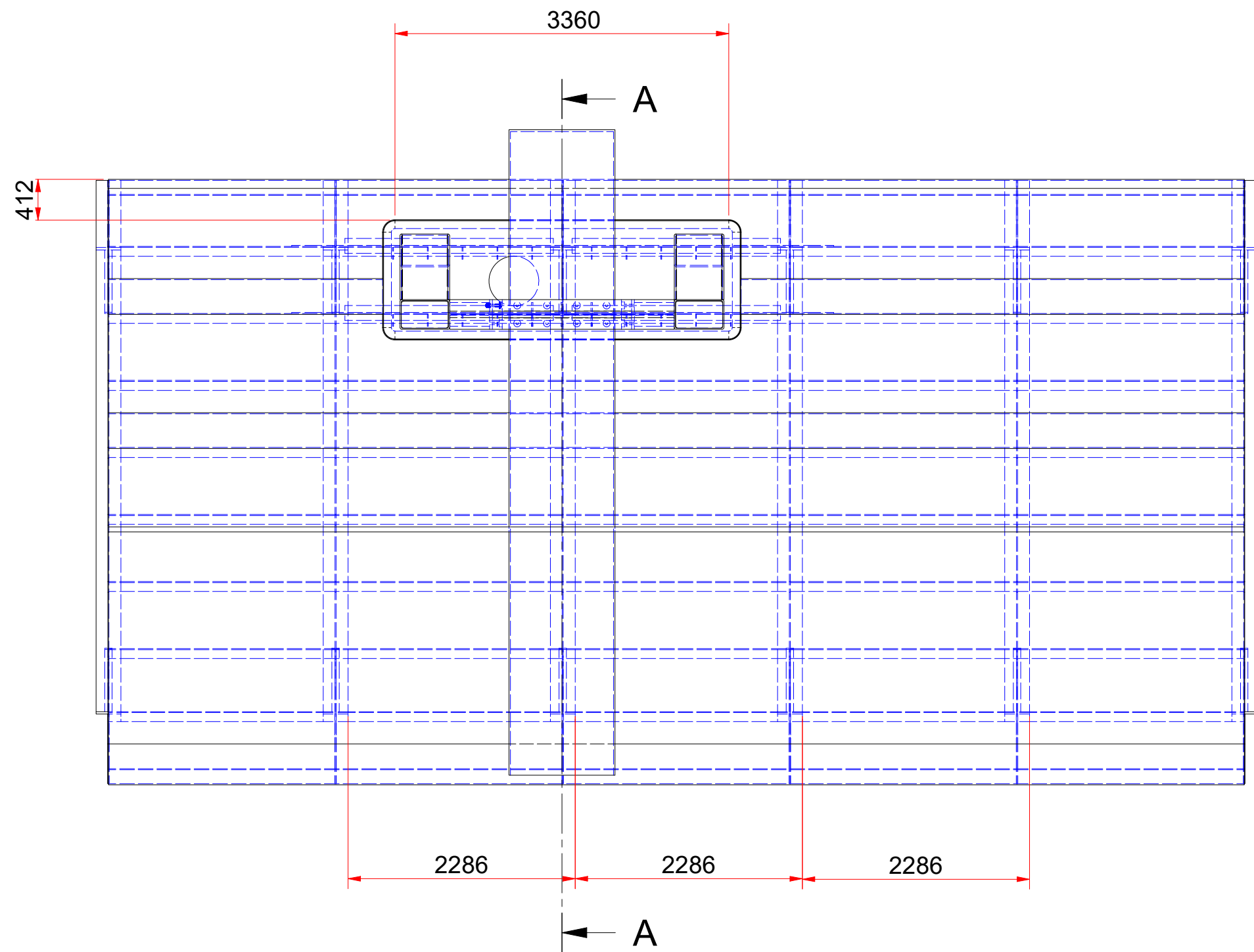
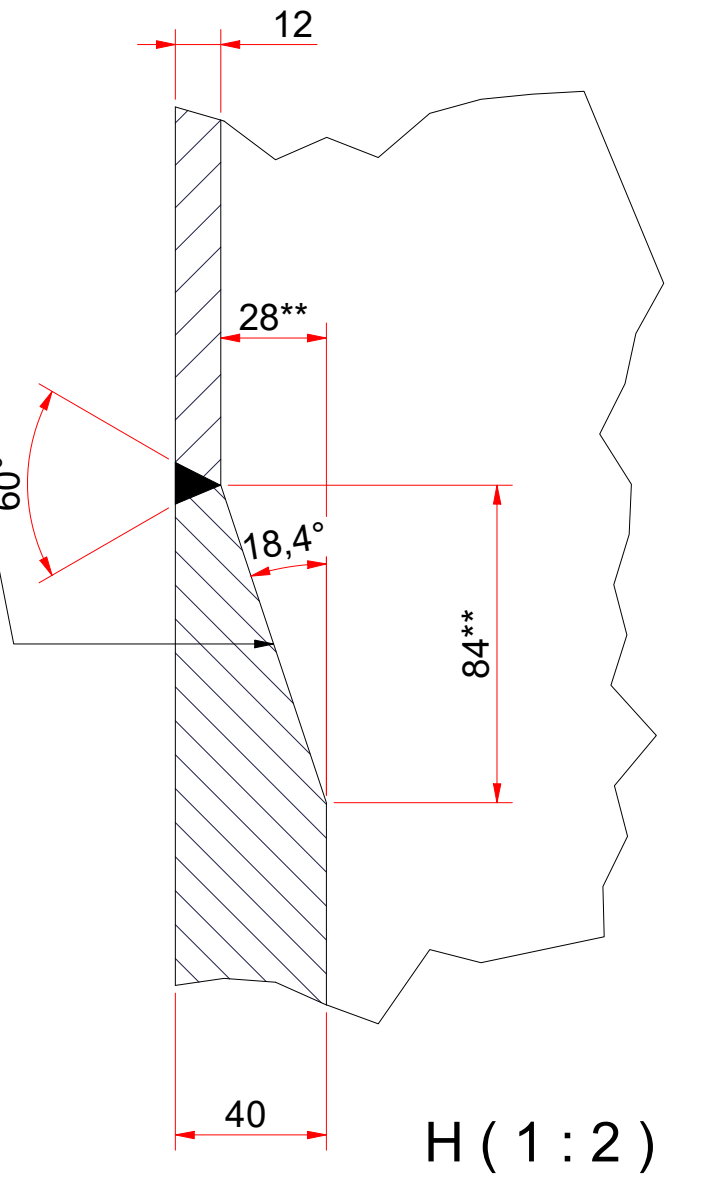
Staalwerk: 3870 kg

Stuklijst 3x uitvoeren

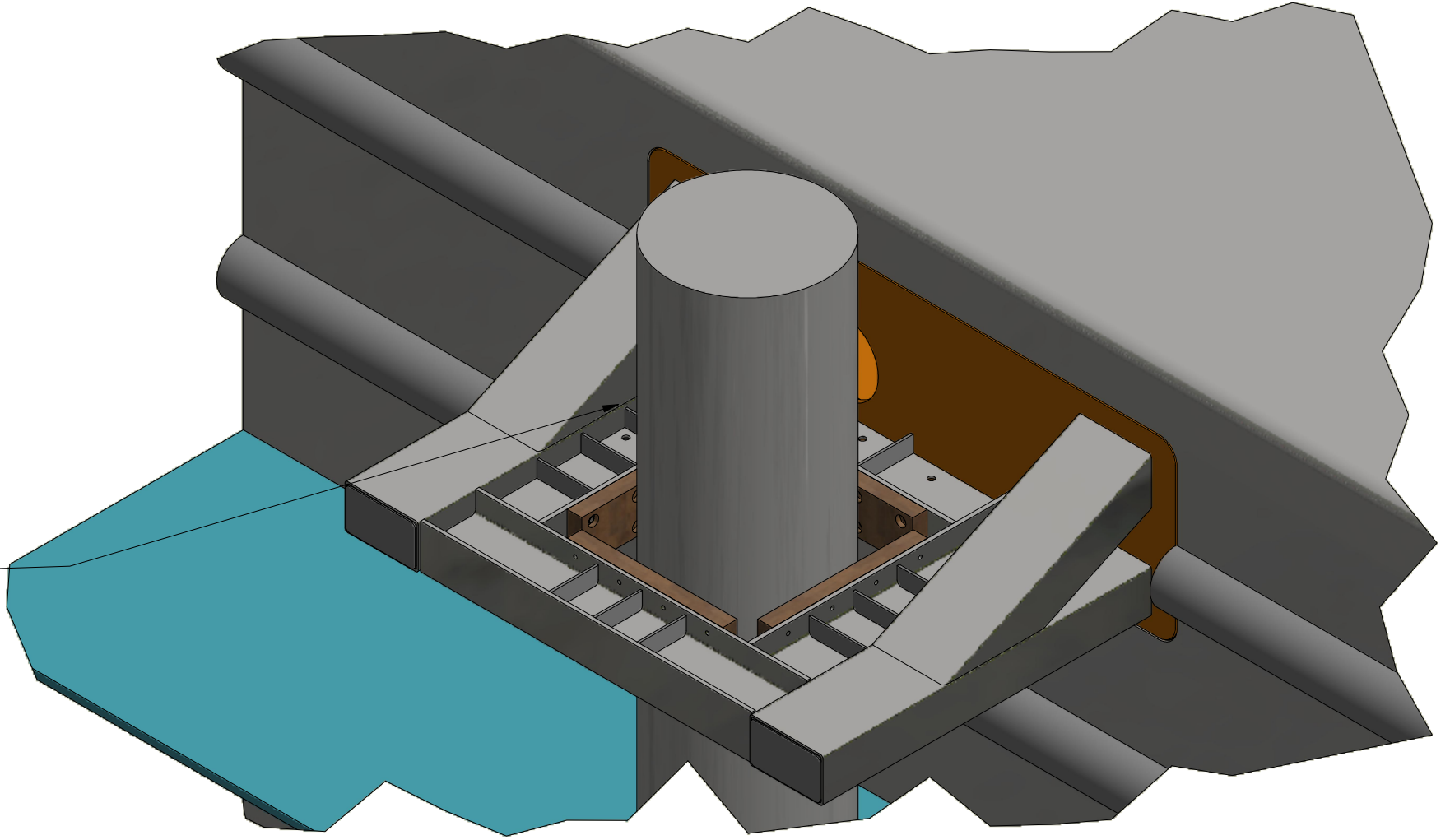
105	20	Plaat 8mm	PRO-142							
104	4	Plaat 10mm	PRO-141							
103	1	Paalraam	PRO-006							
102	4	Plaat 15mm	PRO-1126							
101	4	Plaat 10mm	PRO-114							
100	1	Plaat 40mm	PRO-111							
ITEM		QTY	DESCRIPTION	PART NUMBER	MATERIAL					
Parts List										
Name		MvB	Description		Mooring Collar					
Date		20-9-2023				Progress				
Scale			Status	Schepswierf Talsma	Edisonstraat 15 8801 PN Franeker 0517-383747 info@schepswierfalsma.nl					
Mass		62557,194 kg				Drawingnr.	Rev.	Projection	A1	
Geometrical tolerance ISO 1101			PRO-005	B						Sheet 1 / 4
Surface roughness ISO 1302										
Limits and fits ISO 286+2768-m										
--REMOVE SHARP EDGES--										
This drawing remains our property and shall not be copied, reproduced or shown to third parties without written approval										



Remark \*\*:



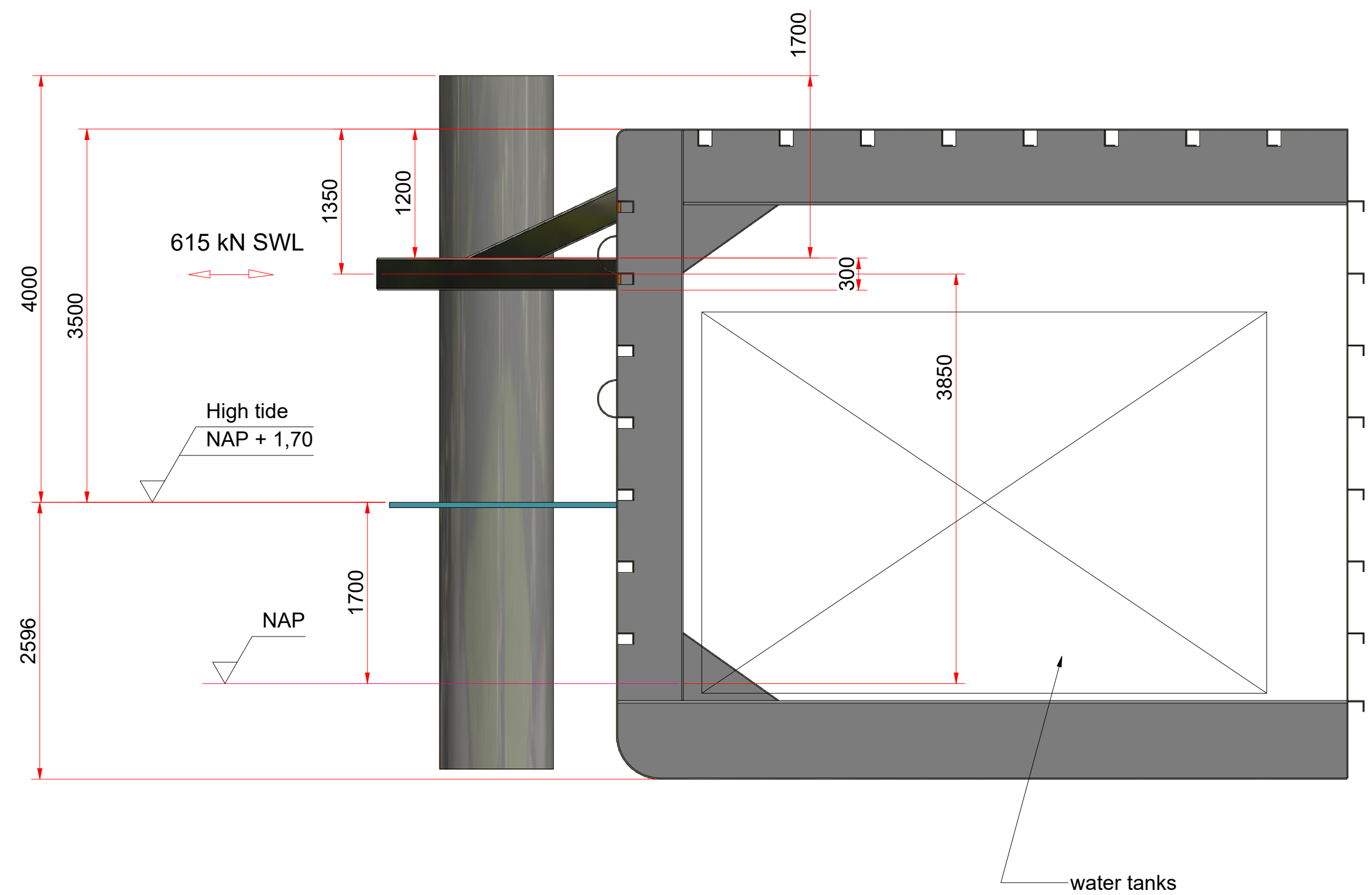
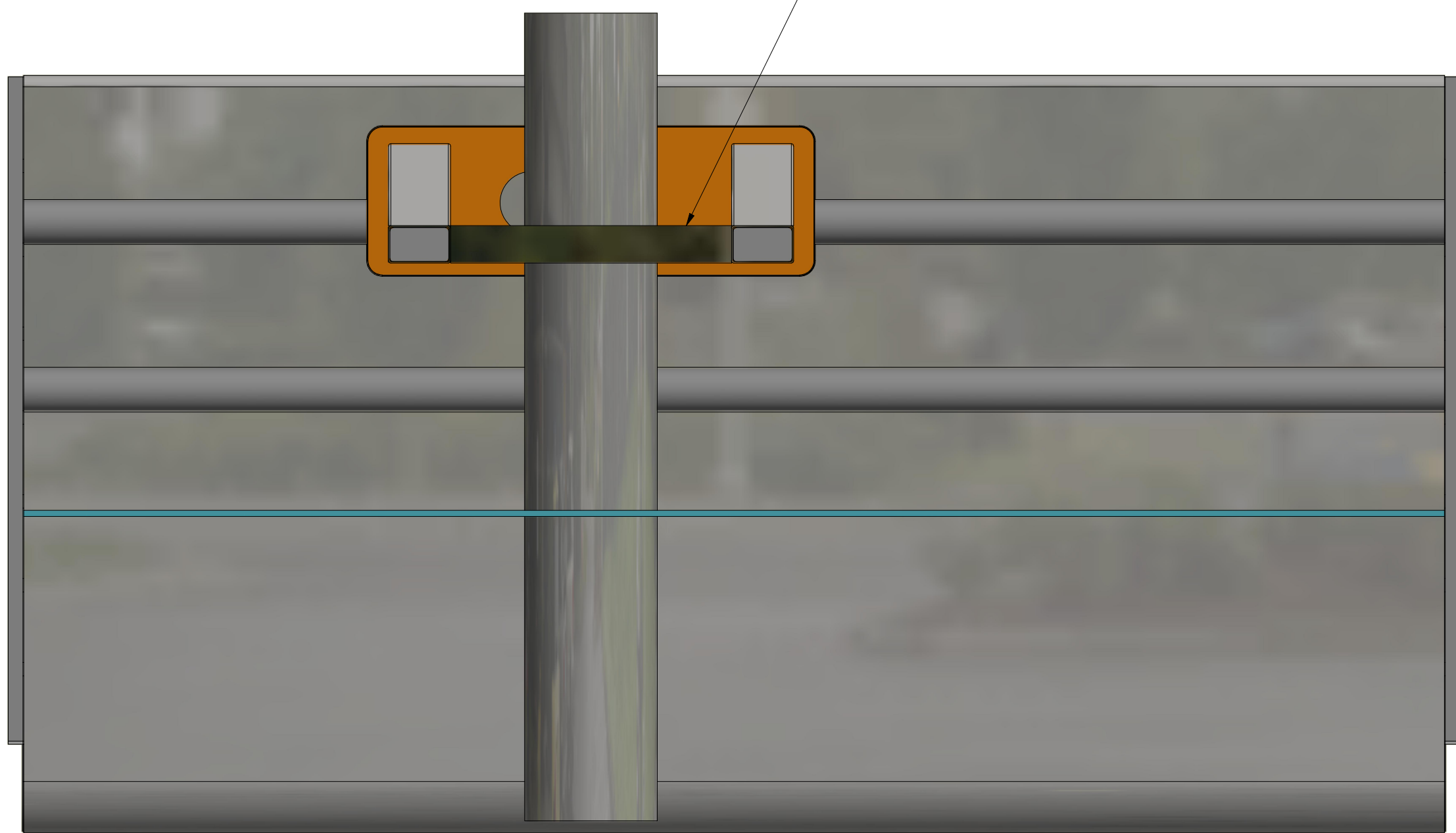
A-A ( 1 : 50 )



Hout 100x300  
L=1060

Name	MvB	Description	Mooring Collar		
Date	20-9-2023		Progress		
Scale					
Mass	62557,194 kg	Status			
Geometrical tolerance ISO 1101		Drawingnr.		Rev.	Projection
Surface roughness ISO 1302		PRO-005		B	A1
Limits and fits ISO 286+2768-m					Sheet
--REMOVE SHARP EDGES--					2 / 4
This drawing remains our property an shall not be copied, reproduced or shown to third parties without written approval					





From document Orca Offshore:  
Port of Amsterdam  
Mooring Analysis Gerrit Bolkade  
Doc. 233007.POW.001  
Rev.R01  
Date 06-06-2023


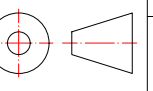
Page 25:

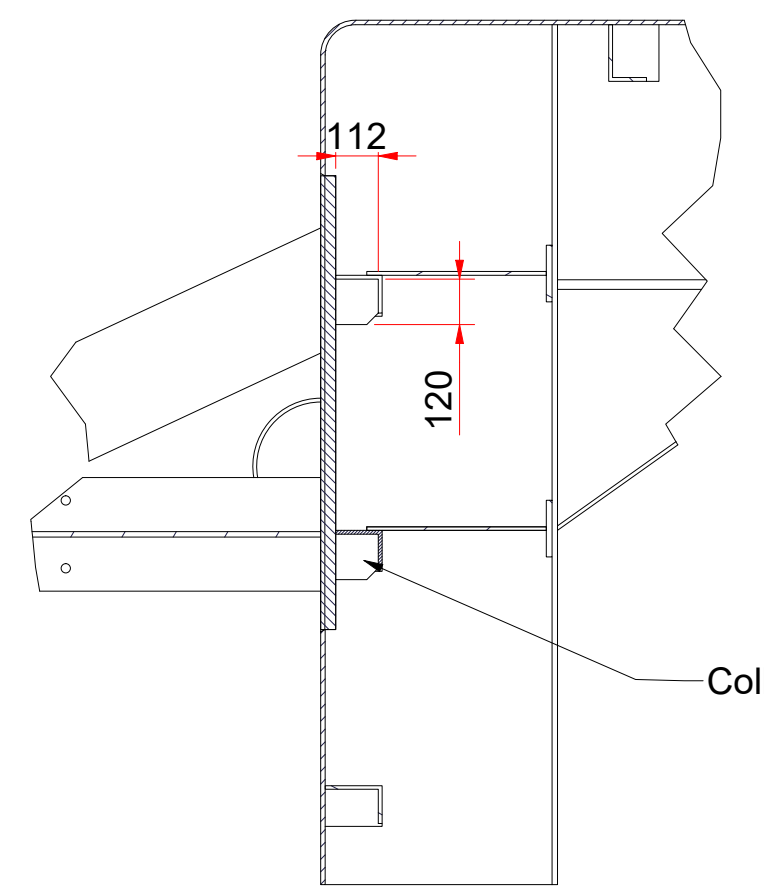
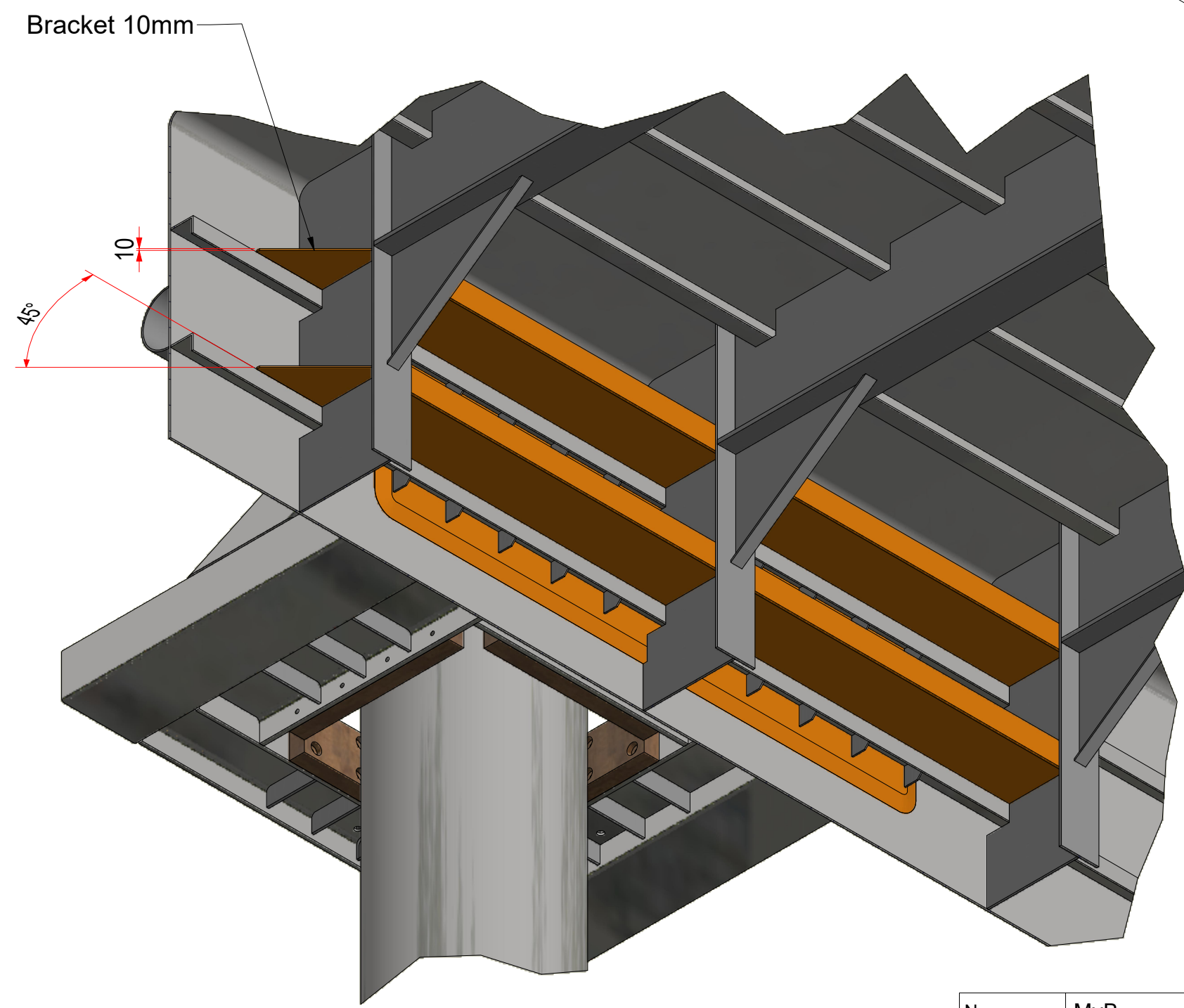
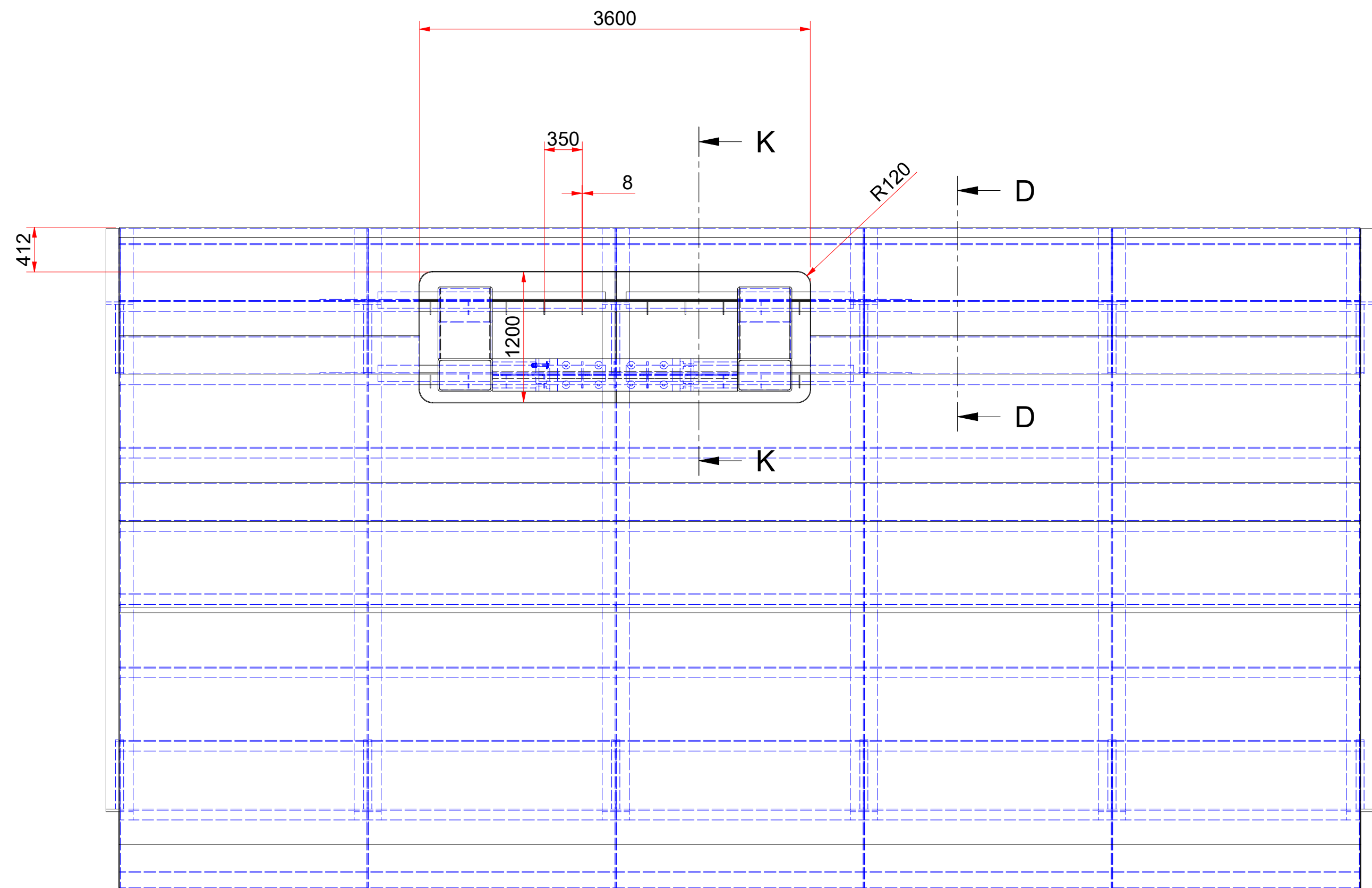
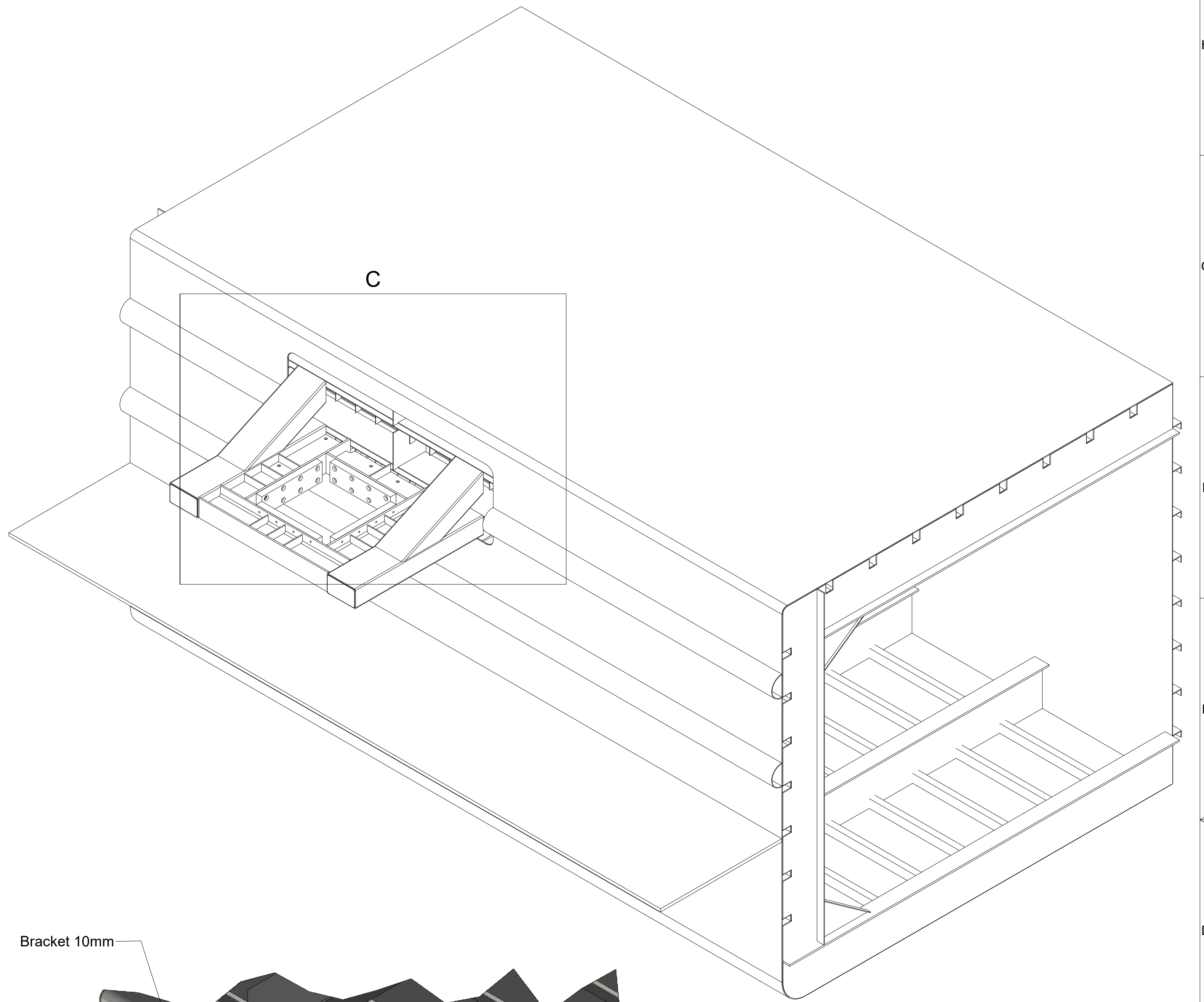
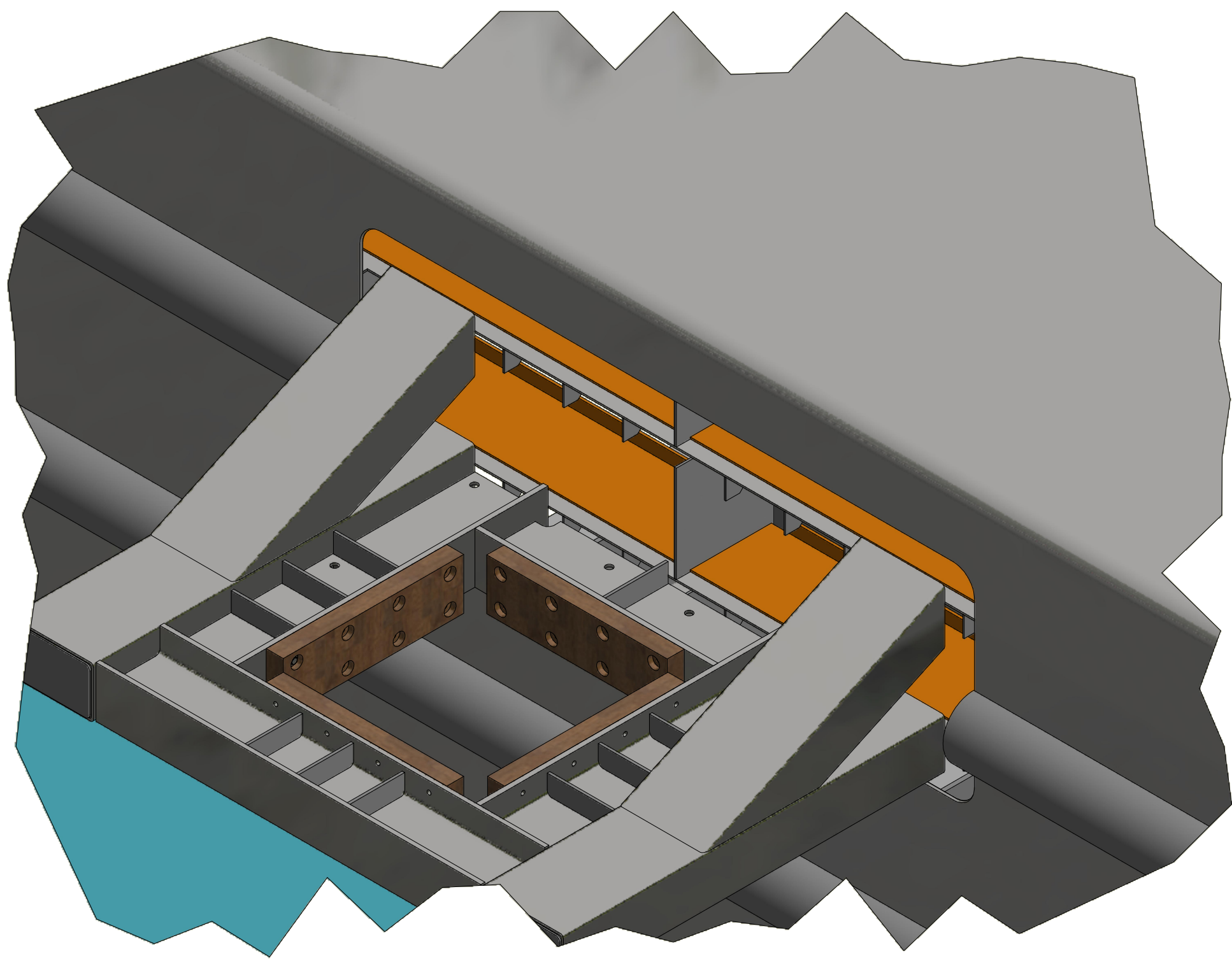
Slotted Moored

- Pile intact capacity looks fine
- Limiting BF 10 South South-East
- Extreme winds expected from heading 240 BF 10.  
Capacity is BF>11 OK for unrestricted mooring

Worstcase as shown:  
Mooringforce 615 kN SWL @ NAP +3850



*Resistance pile to be verified/ confirmed by Orca*

Name	MvB	Description Mooring Collar Progress		 <div>Edisonstraat 15 8801 PN Franeker 0517-383747 info@scheepswerftalsma.nl</div>	
Date	20-9-2023				
Scale					
Mass	62557,194 kg	Status			
Geometrical tolerance ISO 1101		Drawingnr.		Rev.	Projection
Surface roughness ISO 1302					
Limits and fits ISO 286+2768-m		PRO-005		B	
--REMOVE SHARP EDGES--					A1 Sheet 3 / 4
This drawing remains our property an shall not be copied, reproduced or shown to third parties without written approval					



K-K ( 1:20 )

DD ( 1:25 )

Name	MvB	Description	Mooring Collar		Edisonstraat 15 8801 PN Franeker 0517-383747 info@scheepswerftalsma.nl
Date	20-9-2023				
Scale					
Mass	62557,194 kg	Status			
Geometrical tolerance ISO 1101		Drawingnr.	Rev.	Projection	A1
Surface roughness ISO 1302					
Limits and fits ISO 286+2768-m					
--REMOVE SHARP EDGES--					
		PRO-005	B		Sheet 4 / 4
This drawing remains our property and shall not be copied, reproduced or shown to third parties without written approval					