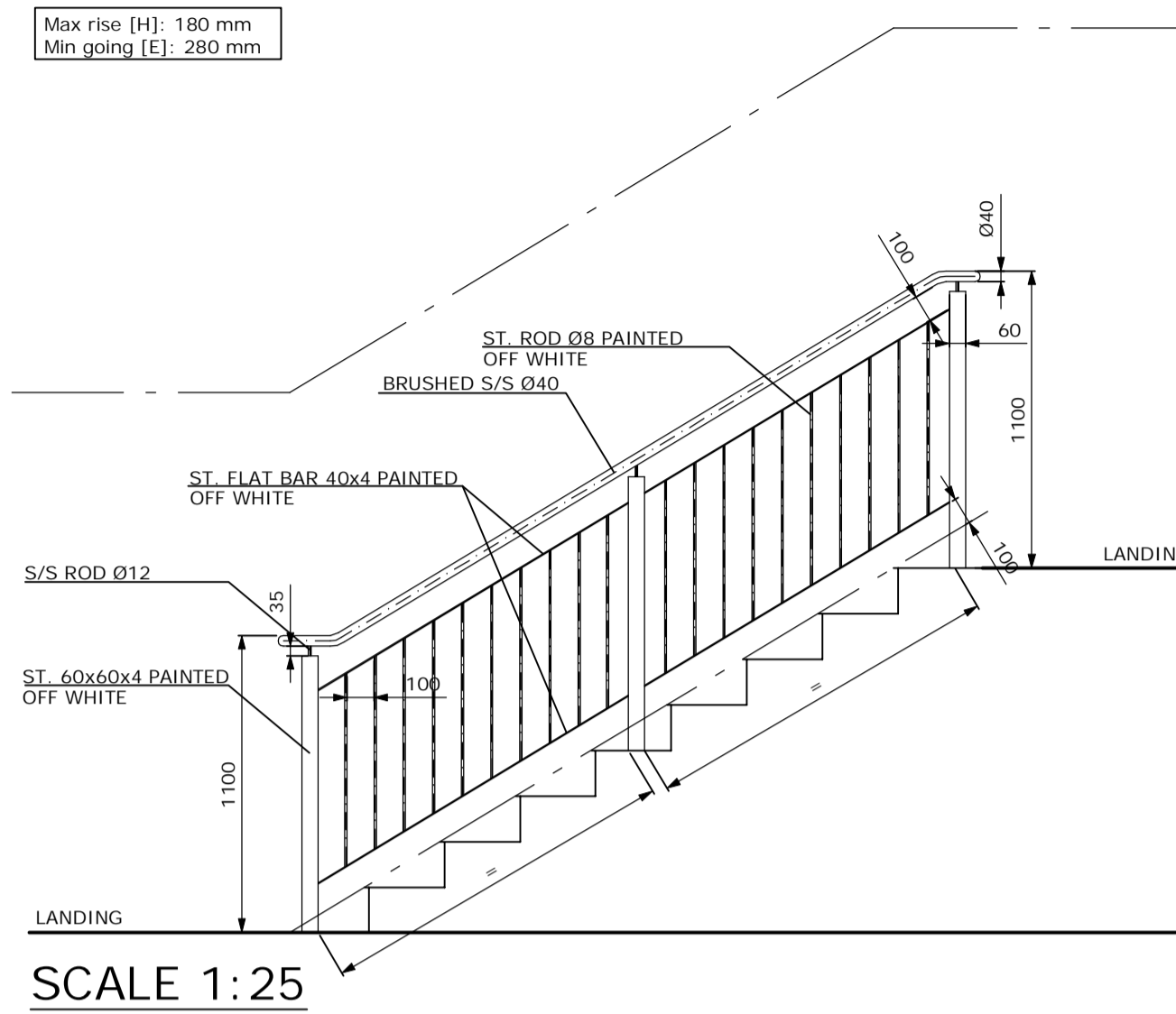


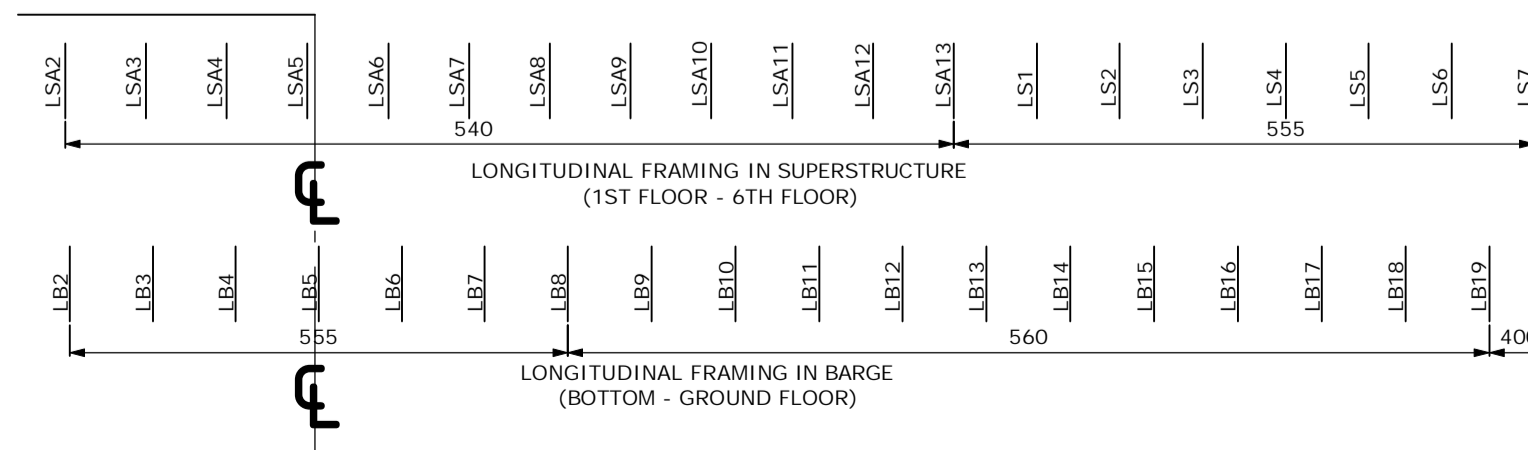
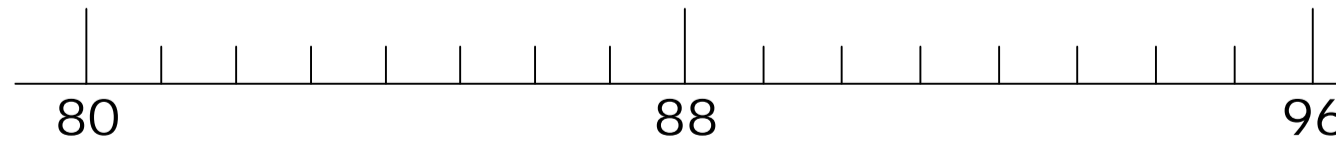
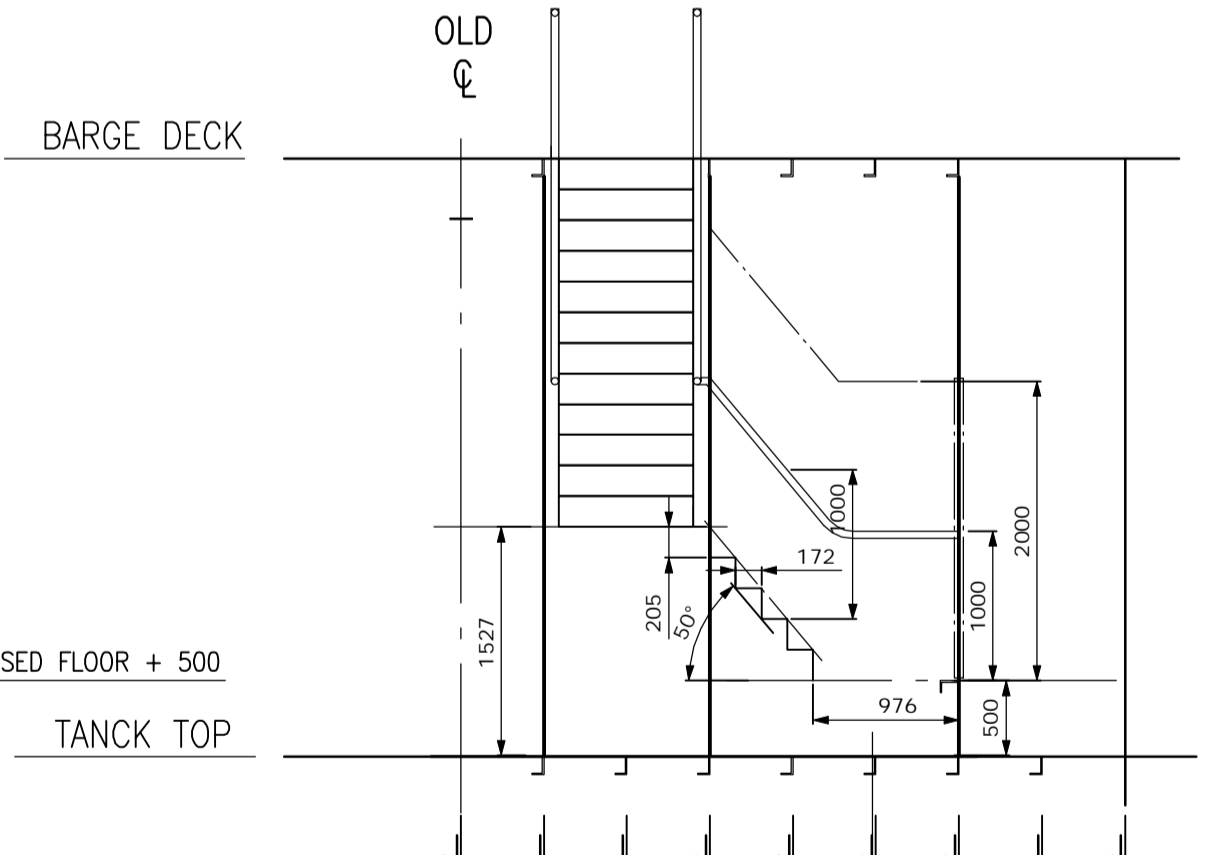
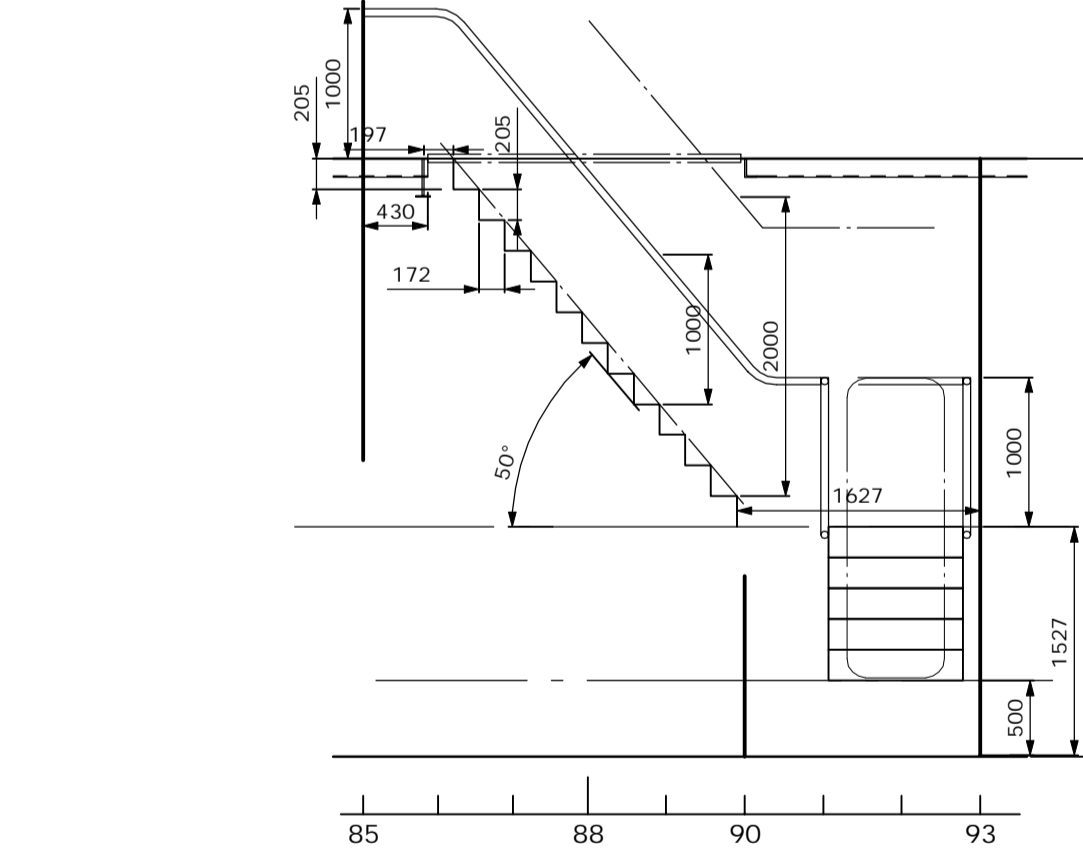
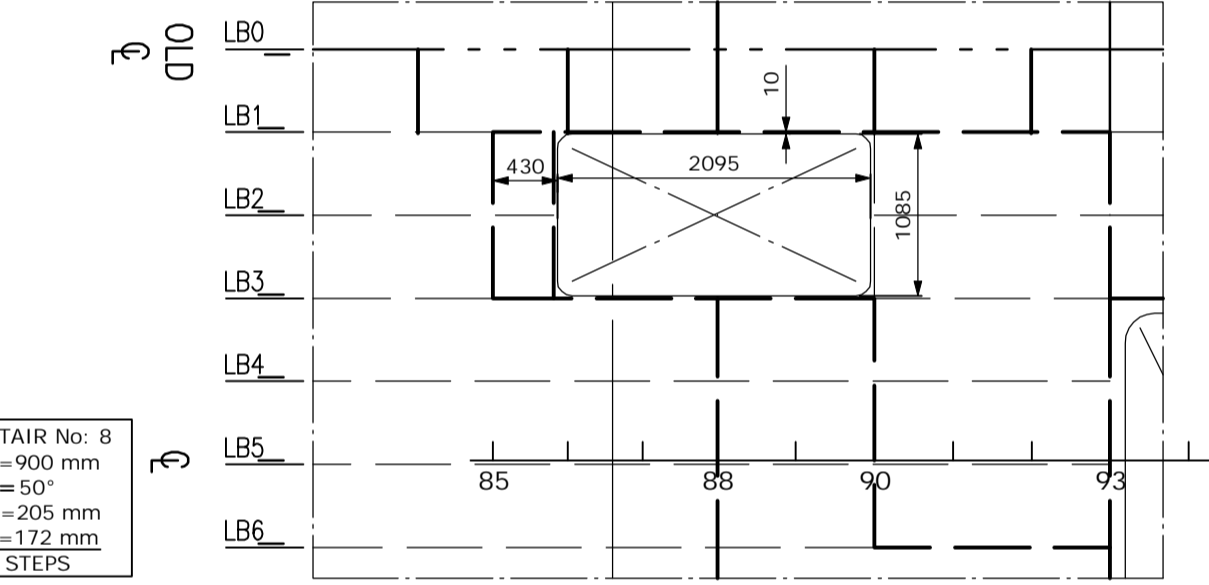
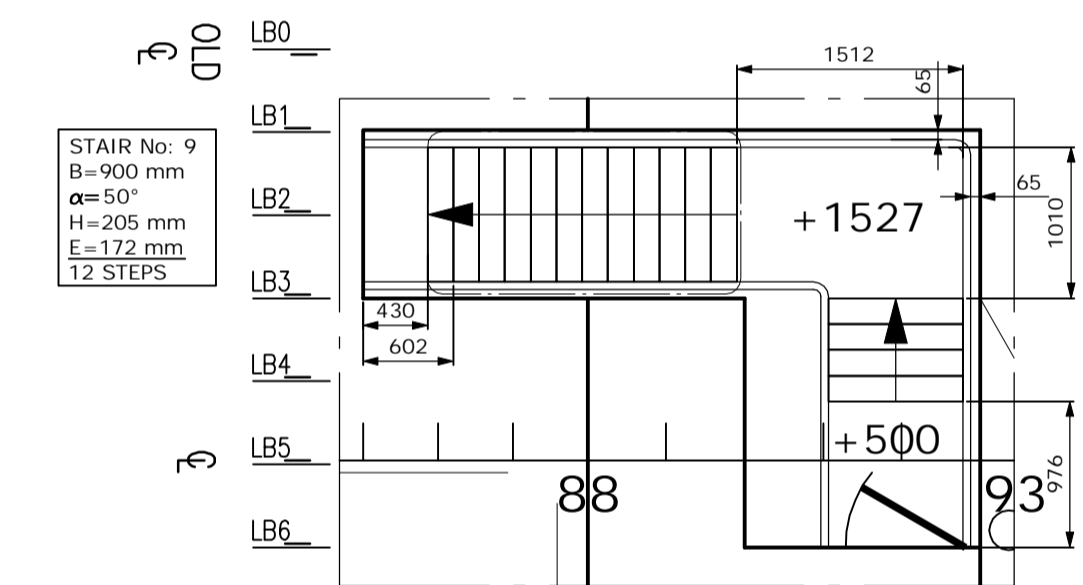
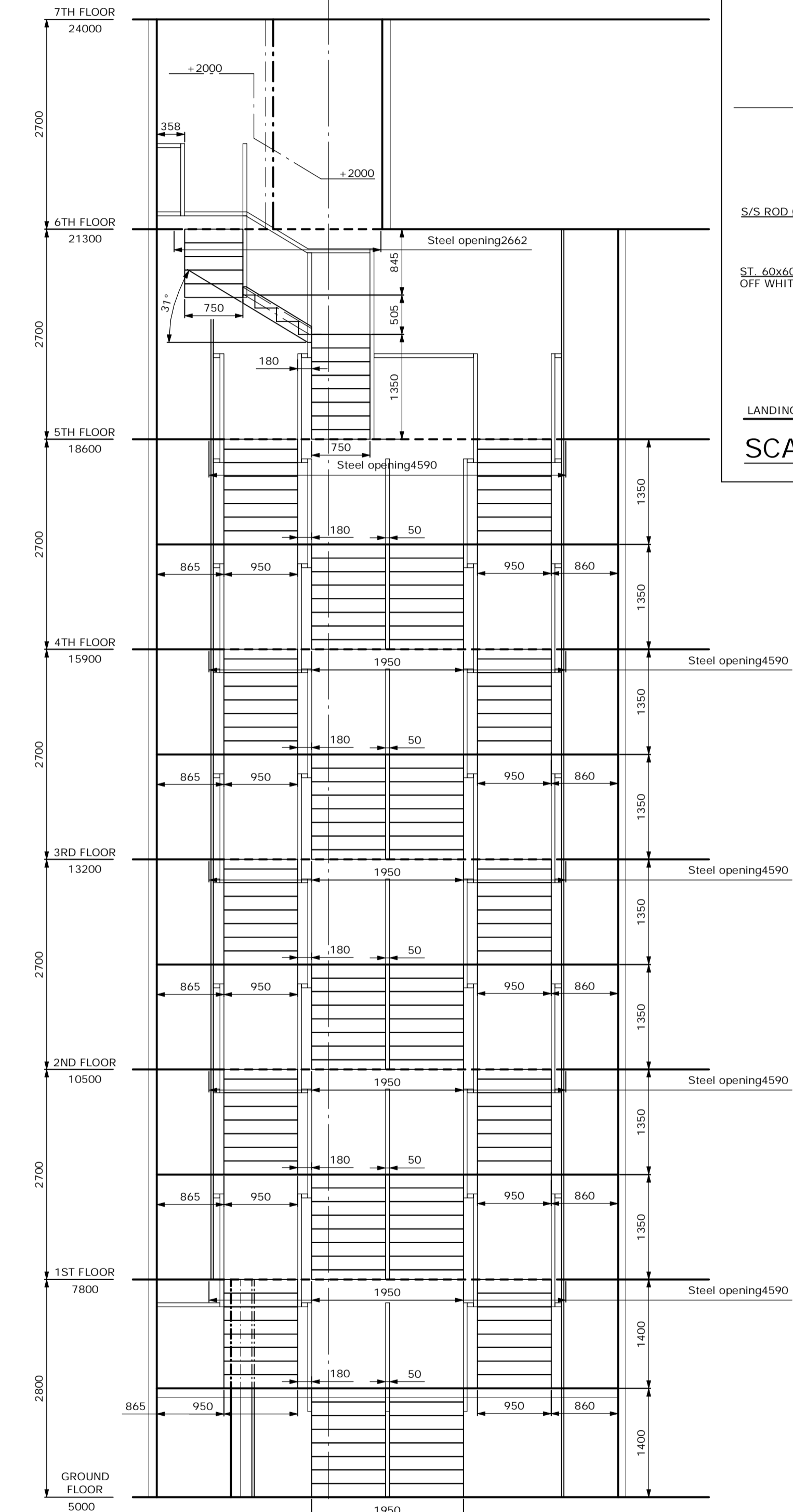
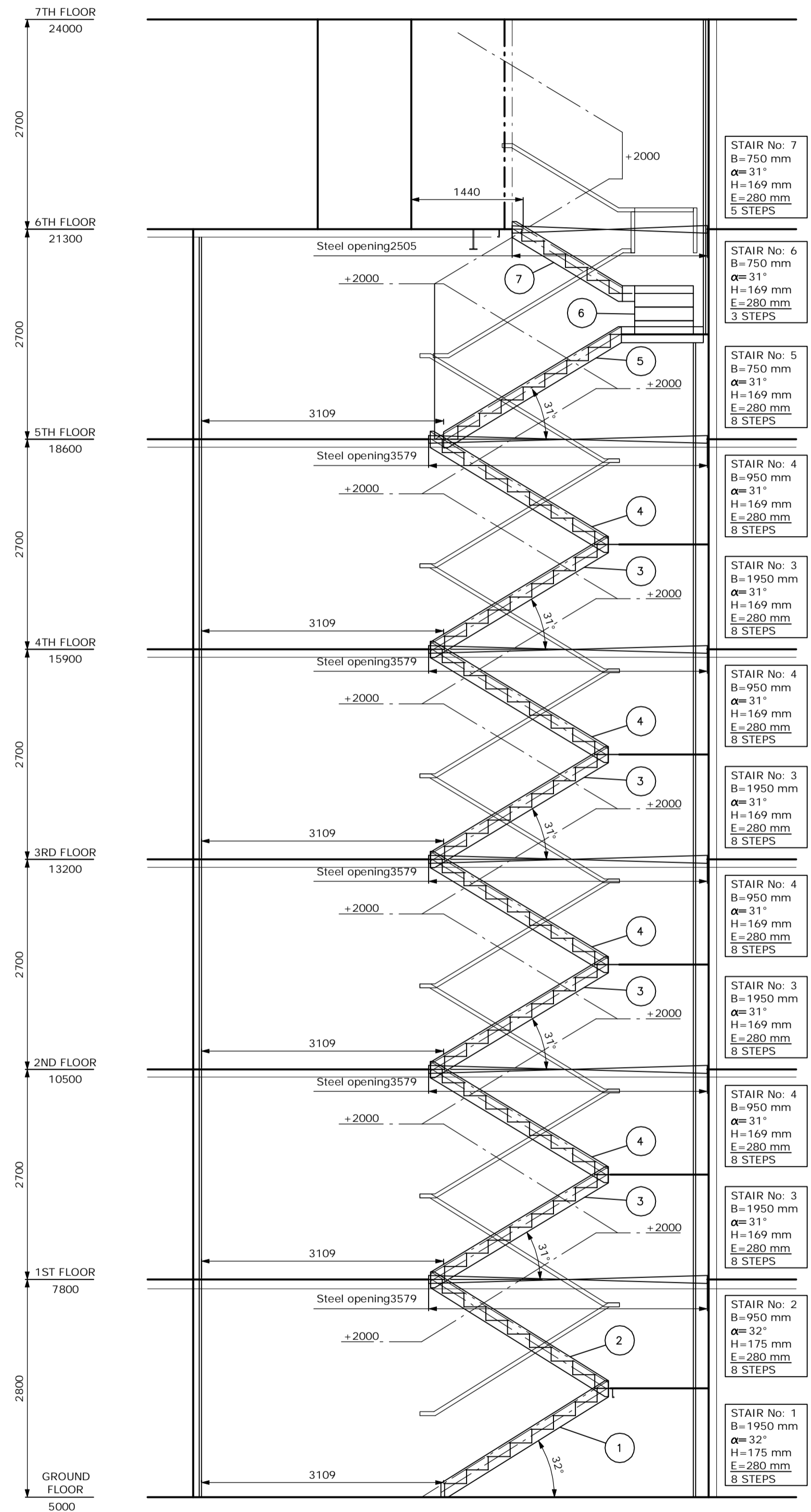
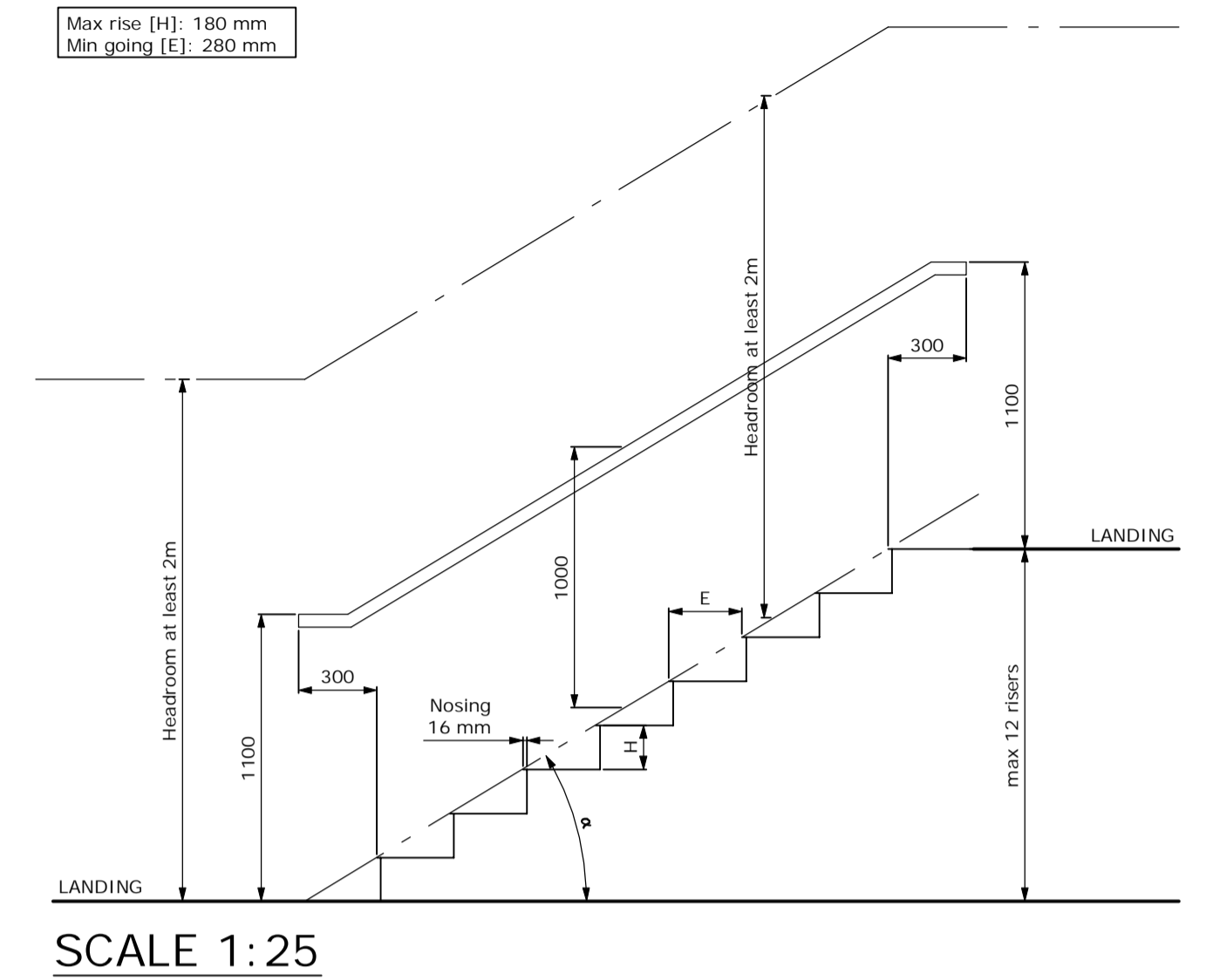
Stair No	1	2	3	4	5	6	7	8	9	10	11
Bevel [°]	32	32	31	31	31	31	31	50	50	40	60
Rise [mm]	175	175	169	169	169	169	169	205	205	200	200
Going [mm]	280	280	280	280	280	280	280	172	172	240	116
Steps [pcs]	8	8	8	8	8	3	5	5	12	5	20
Width [mm]	1950	950	1950	950	750	750	750	900	900	1100	700
Amount [pcs]	1	2	4	8	1	1	1	1	1	1	1

Rev.	Description	Date	Sign.
A	Updated acc. to BML's comments	2008-05-30	JO/FS
B	Legend for stair 11 updated, stair 12 deleted	2008-06-19	JO/FS
C	Delivery drawing	2009-04-01	JO/FS

KEY DIMENSIONS OF INTERNAL STAIRS



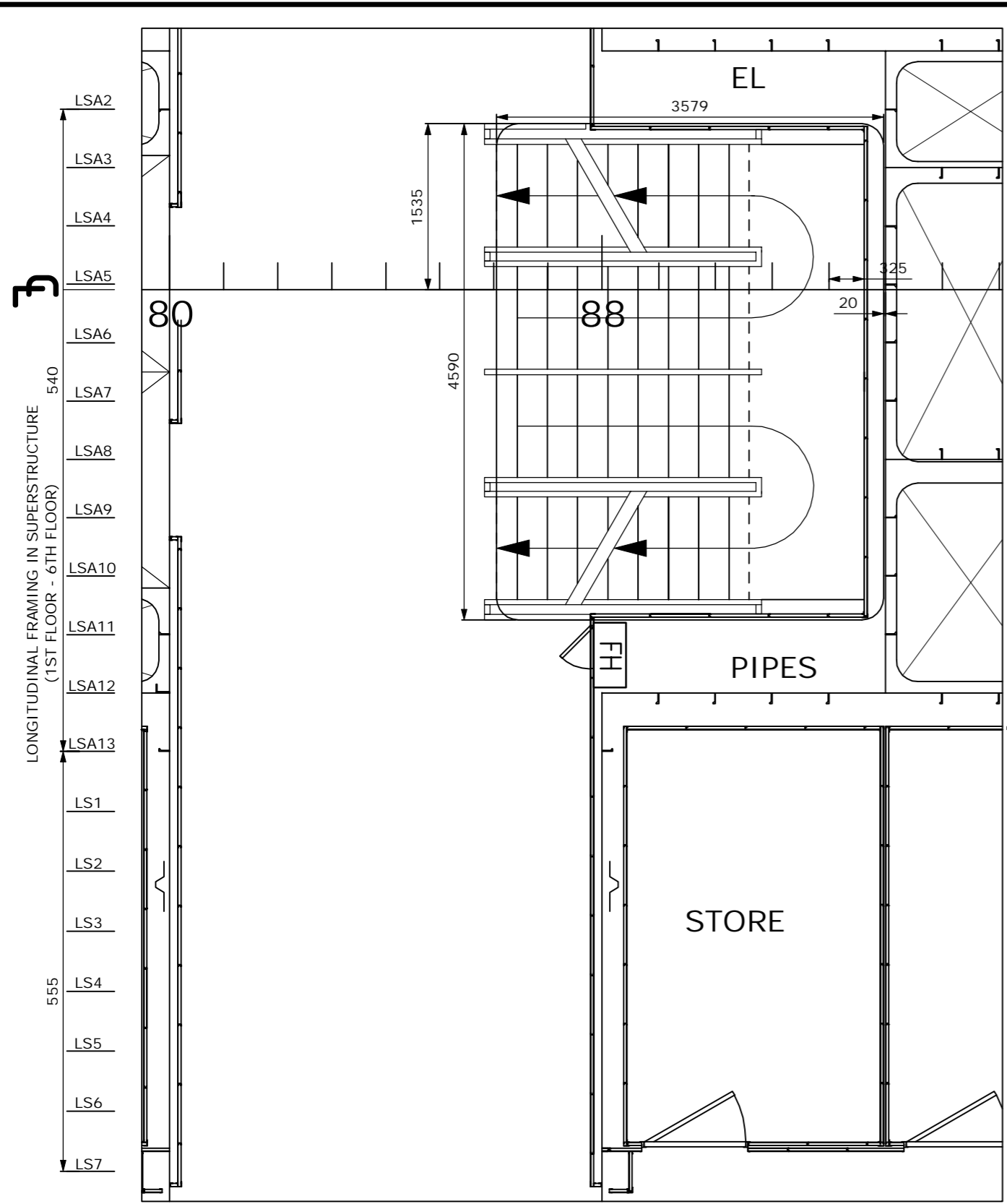
KEY DIMENSIONS OF INTERNAL STAIRS



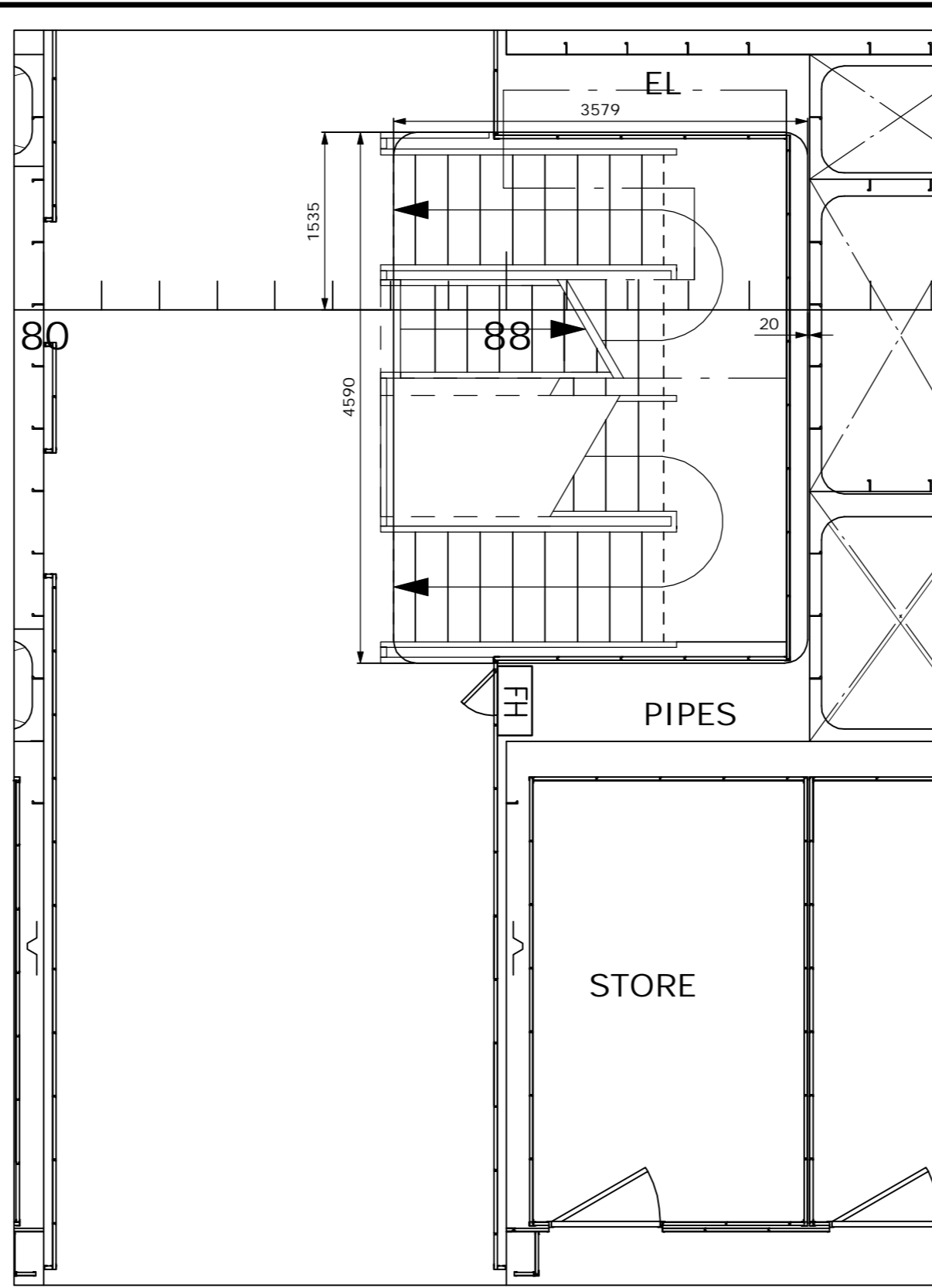
See also drawings:
D.1417.1100.002 ESCAPE STRATEGY PLAN

	Scale: 1:50	Owner logo: BIBBY RENAISSANCE CONVERSION PROJECT		
	Designed: 15.02.2008/JO	Drawing name: Arrangement of internal stairs		
	Checked: 15.02.2008/HJ	Project #: 1417	Drawing number: D.1417.4100.007	Page: 1(2)
	Metric	Revision: C	Page: 1(2)	Revision: C

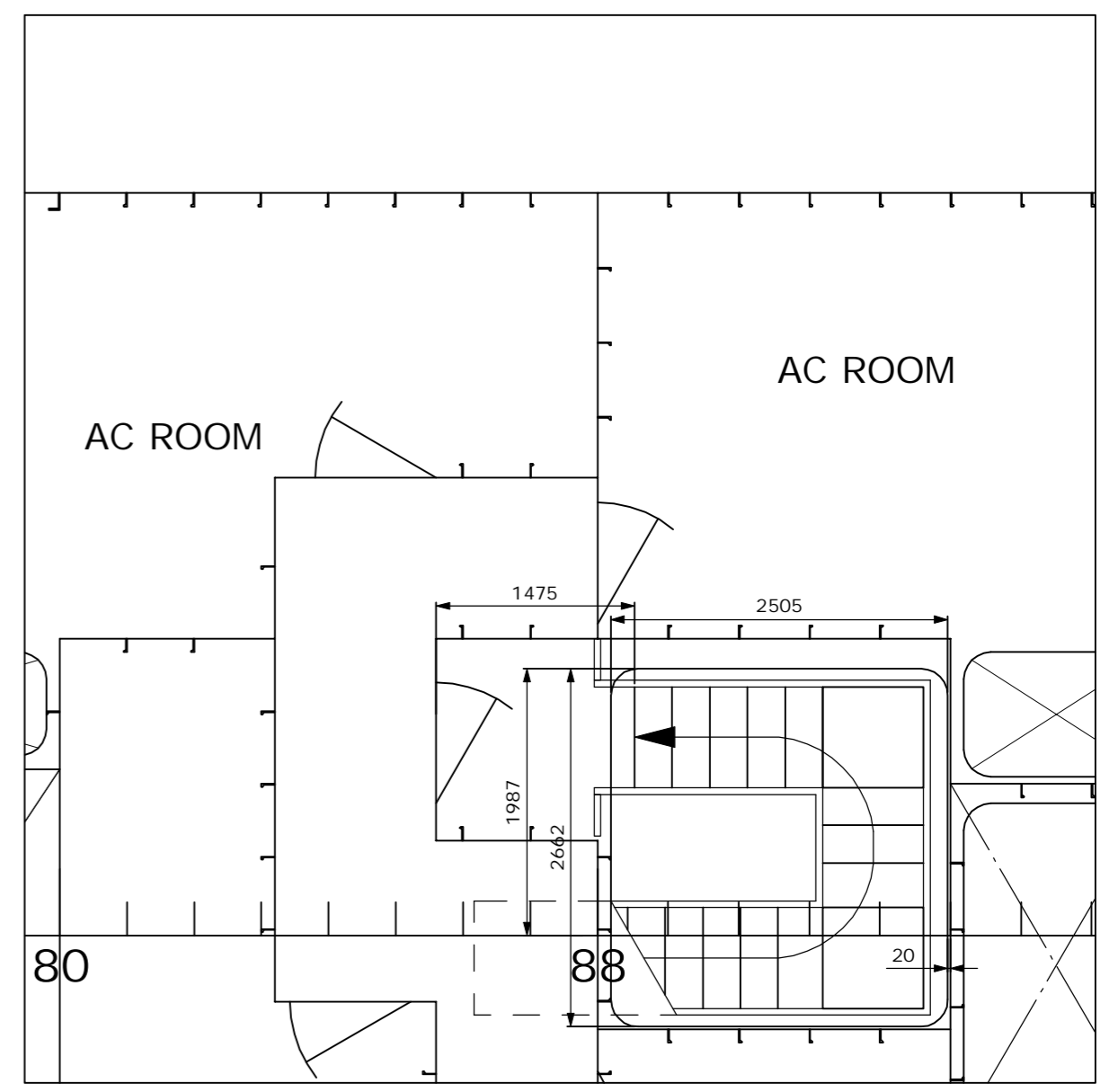
Rev.	Description	Date	Sign.
A	Updated acc. to BML's comments	2008-05-30	JO/FS
B	Legend for stair 11 updated, stair 12 deleted	2008-06-19	JO/FS
C	Delivery drawing	2009-04-01	JO/FS



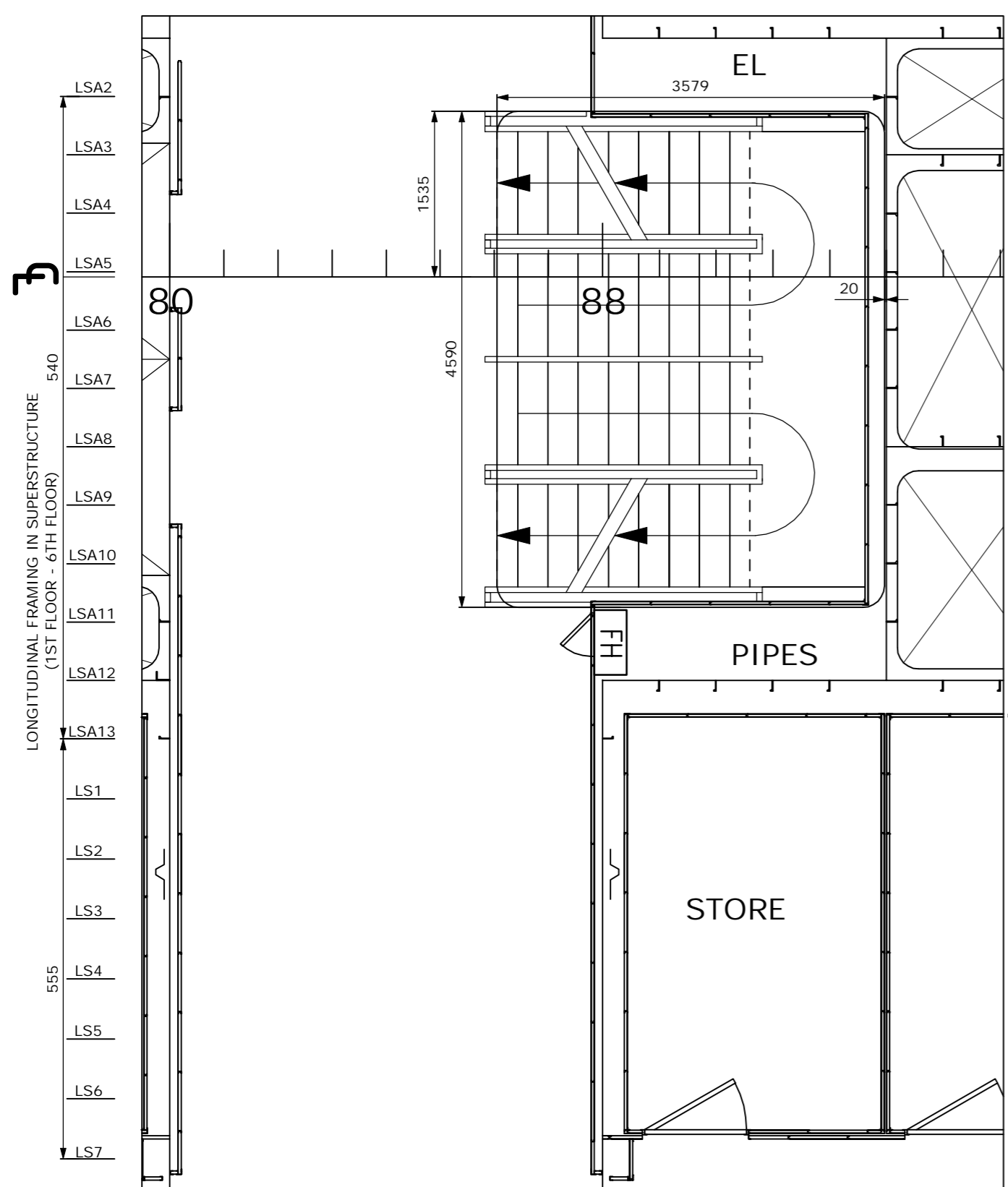
FOURTH FLOOR
15900 mm above BL



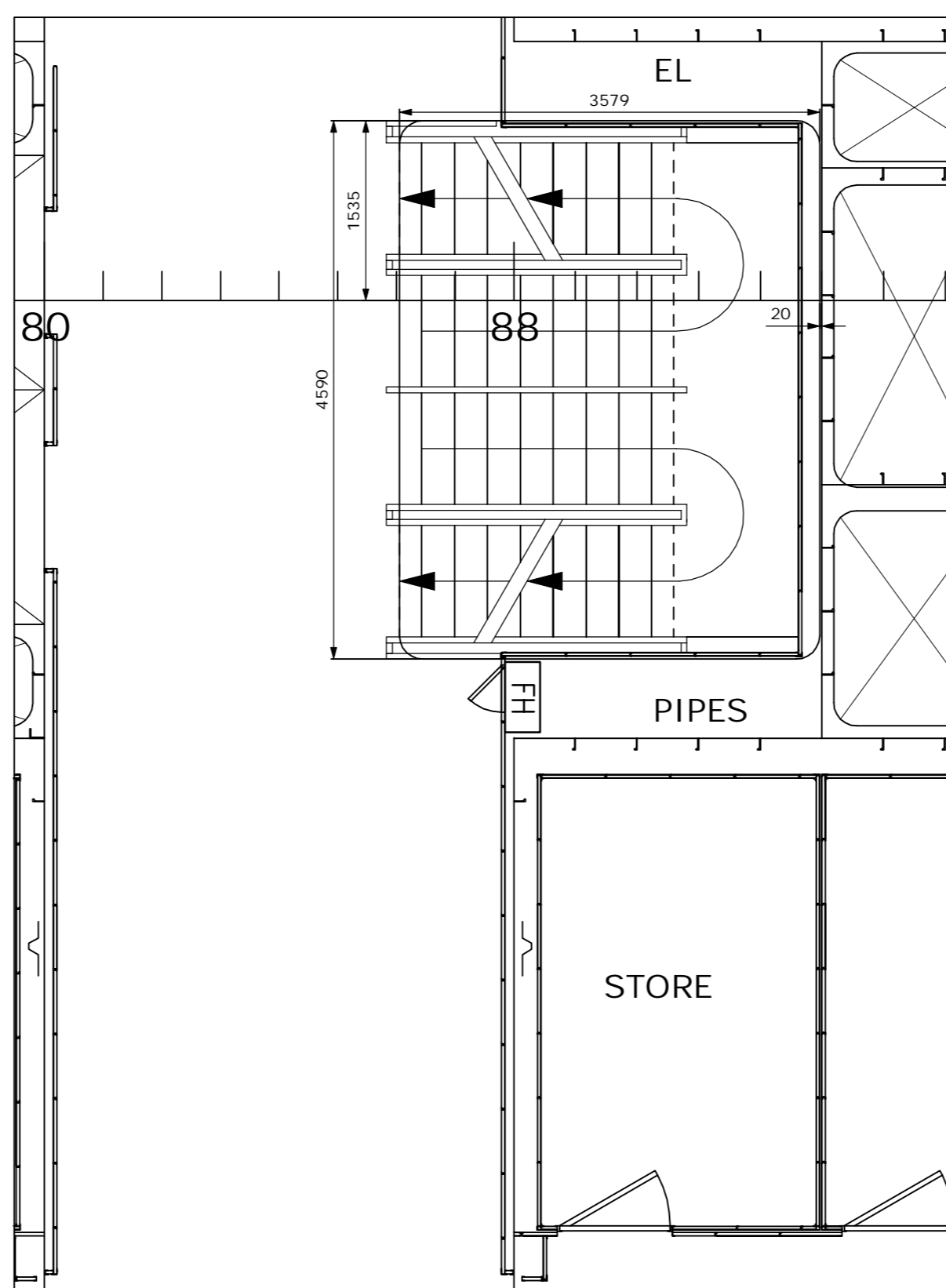
FIFTH FLOOR
18600 mm above BL



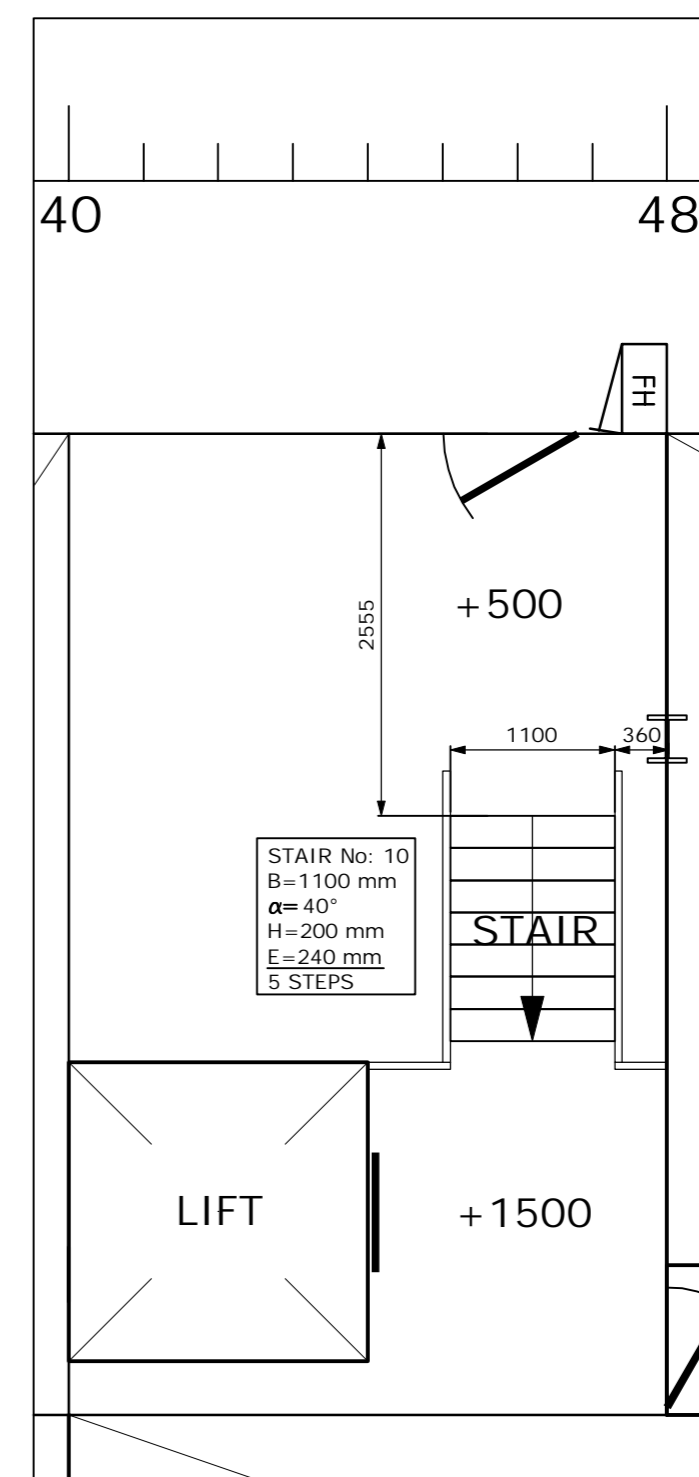
SIXTH FLOOR
21300 mm above BL



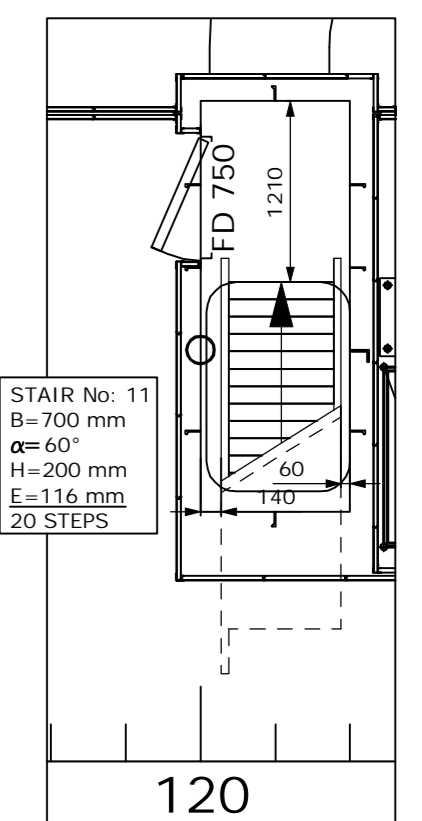
SECOND FLOOR
10500 mm above BL



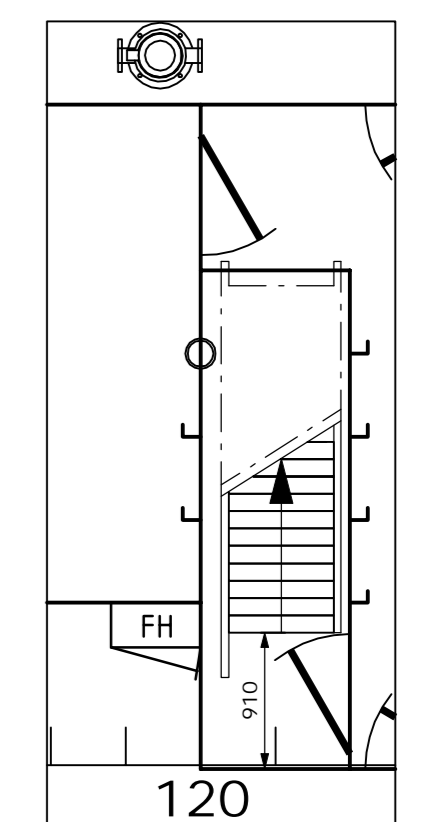
THIRD FLOOR
13200 mm above BL



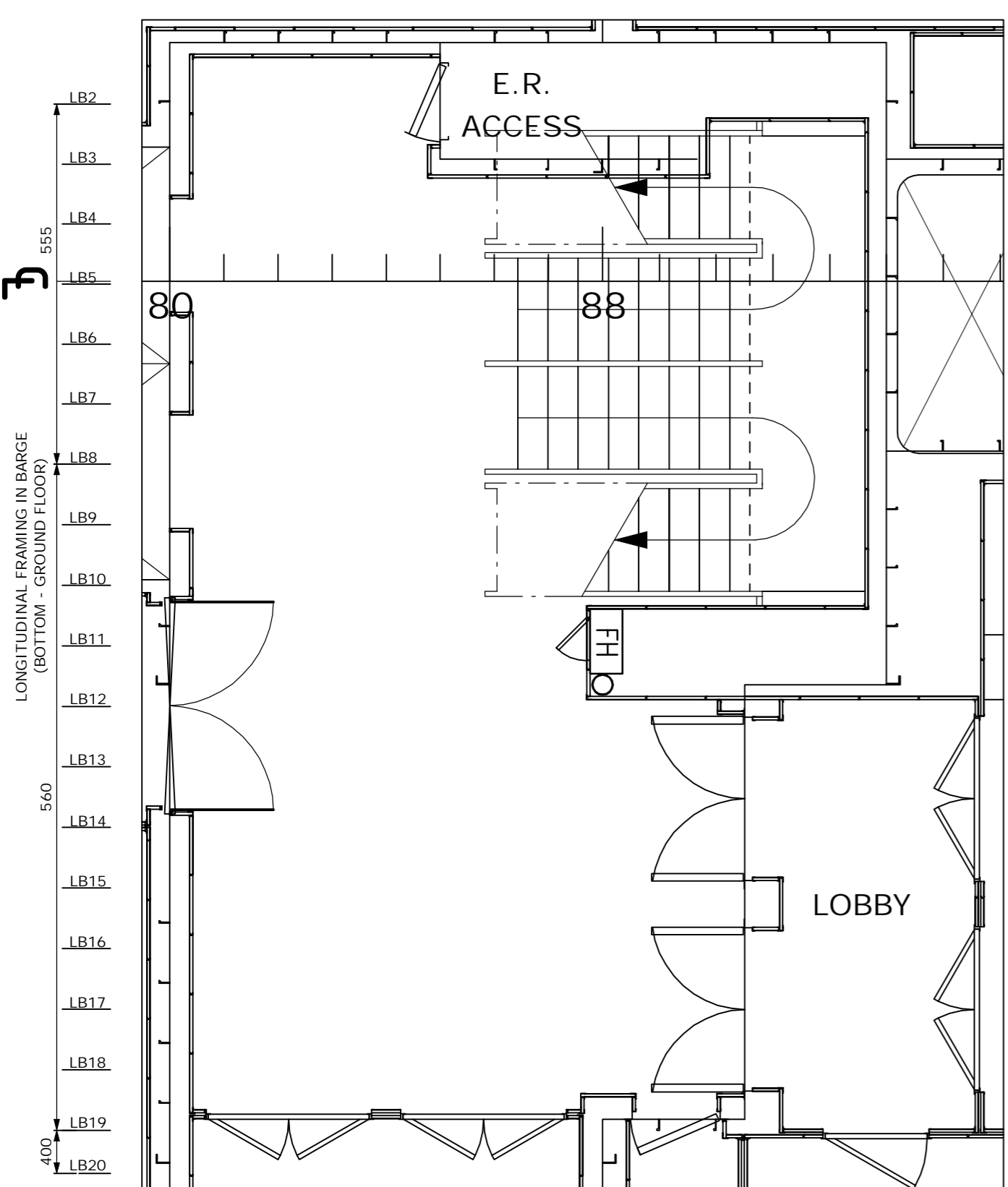
TANK TOP
1000 mm above BL



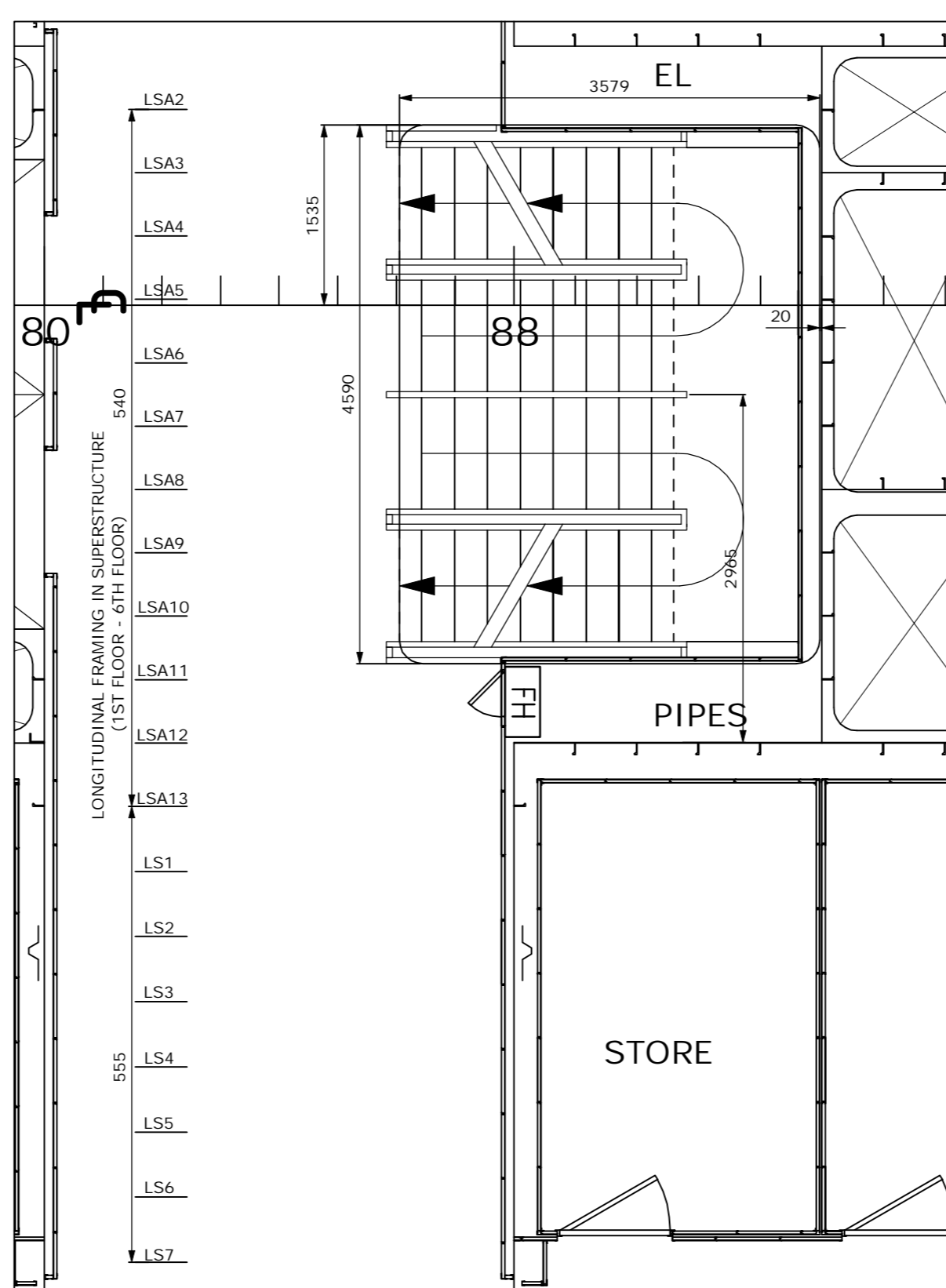
GROUND FLOOR
5000 mm above BL
STAIR No: 11 according to FSS Code Chapter 13.3



TANK TOP
1000 mm above BL



GROUND FLOOR
5000 mm above BL



FIRST FLOOR
7800 mm above BL

Stair No: 12
Shown in drawing
D.1417.3100.007
Arrangement of
external stairs

RADIUS OF OPENINGS R=200
UNLESS OTHERWISE SHOWN

	Scale:	1:50	Owner logo:	
	Designed:	15.02.2008/JO	Drawing name:	Arrangement of internal stairs
	Checked:	15.02.2008/HJ	Project #:	1417
	Metric		Drawing number:	D.1417.4100.007
			Page:	2(2)
			Revision:	C