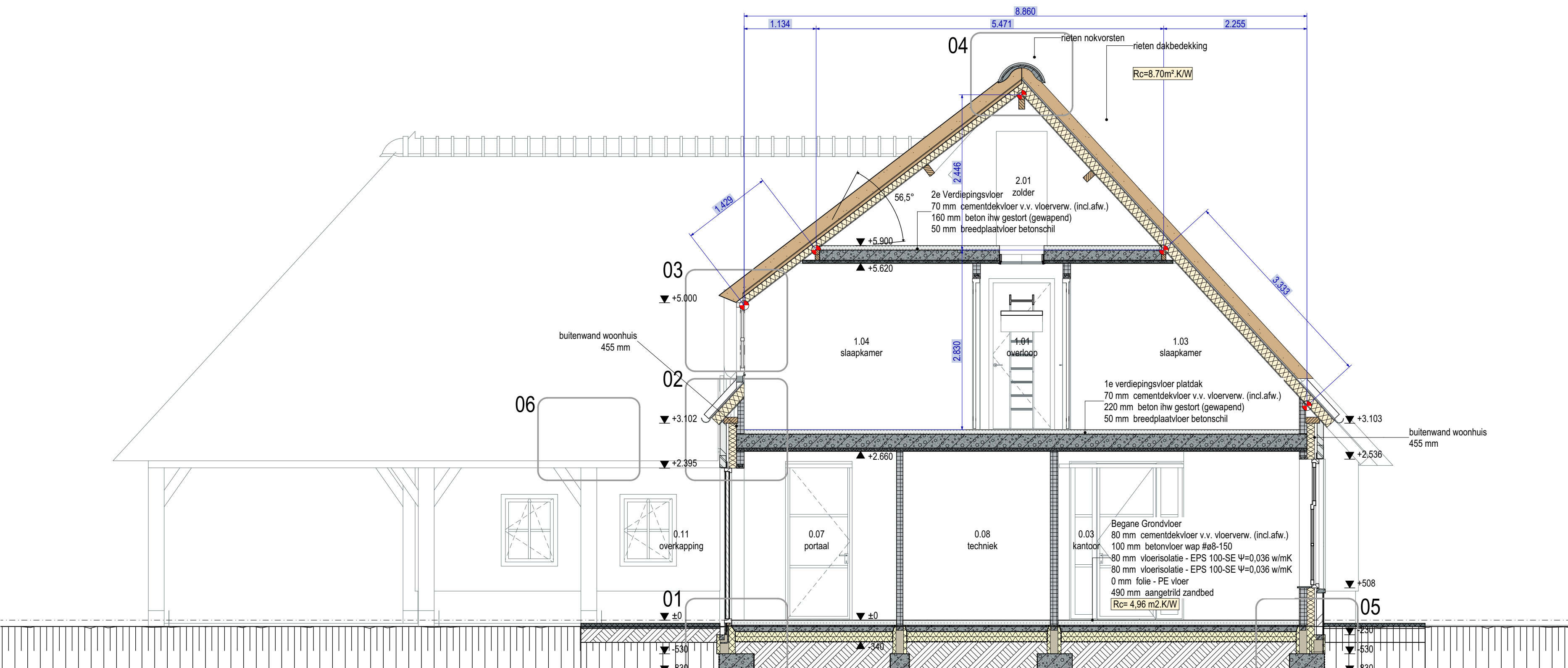
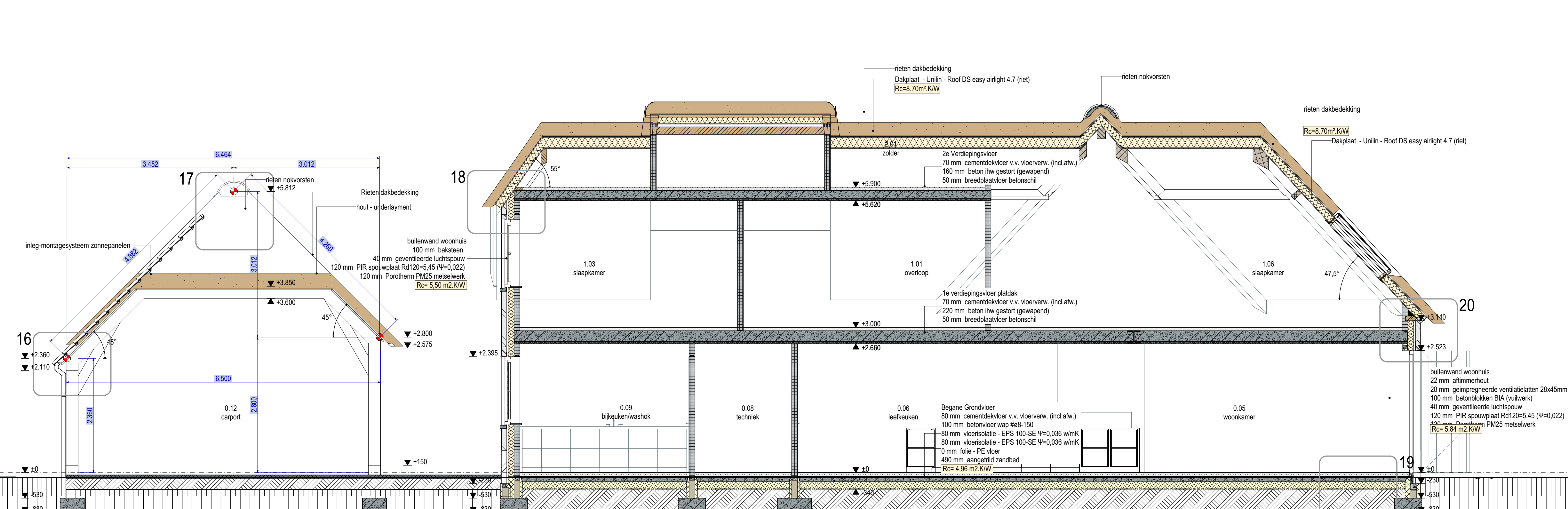


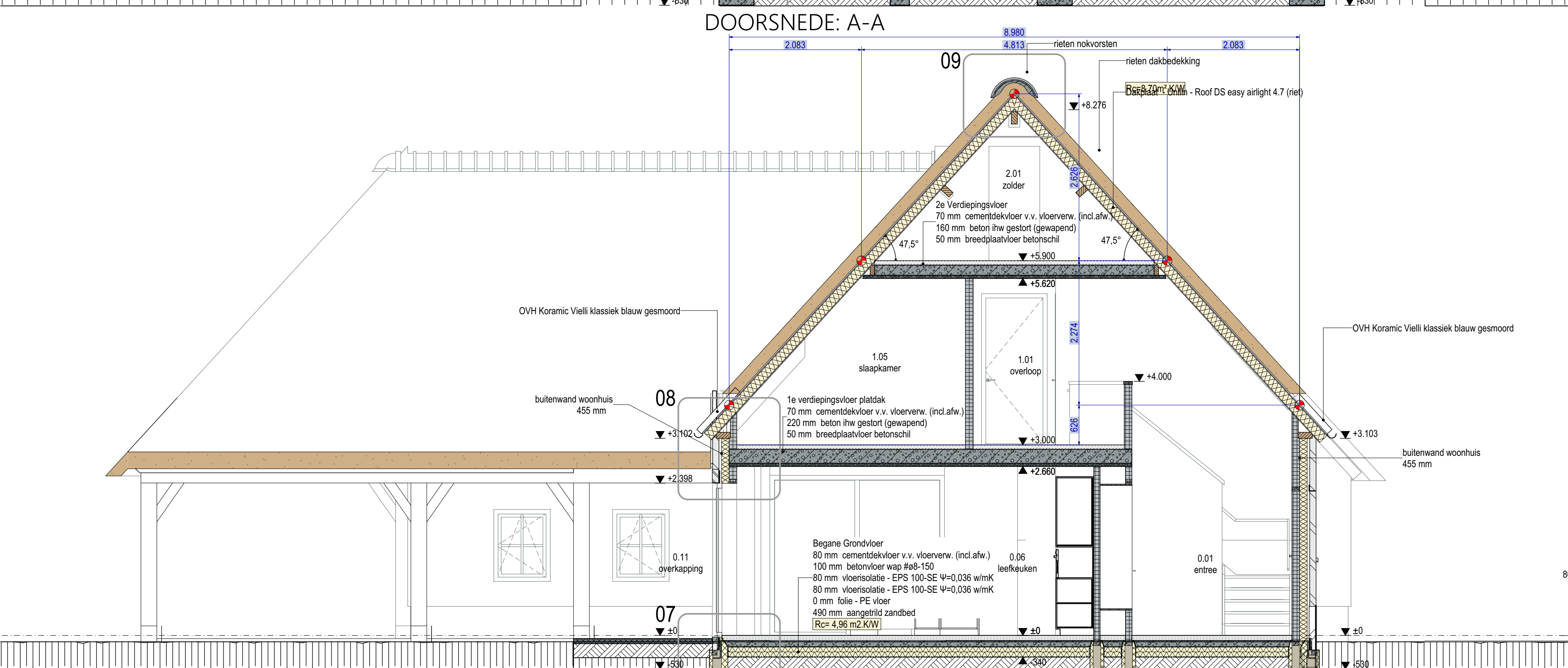
221 e laag bk steen=7.645
 220 e laag bk steen=7.520
 19 e laag bk steen=7.458
 18 e laag bk steen=7.395
 17 e laag bk steen=7.333
 16 e laag bk steen=7.270
 15 e laag bk steen=7.208
 14 e laag bk steen=7.145
 13 e laag bk steen=7.083
 12 e laag bk steen=7.020
 11 e laag bk steen=6.958
 10 e laag bk steen=6.895
 109 e laag bk steen=6.833
 108 e laag bk steen=6.770
 107 e laag bk steen=6.708
 106 e laag bk steen=6.645
 105 e laag bk steen=6.583
 104 e laag bk steen=6.520
 103 e laag bk steen=6.458
 102 e laag bk steen=6.395
 101 e laag bk steen=6.333
 100 e laag bk steen=6.270
 99 e laag bk steen=6.208
 98 e laag bk steen=6.145
 97 e laag bk steen=6.083
 96 e laag bk steen=6.020
 95 e laag bk steen=5.958
 94 e laag bk steen=5.895
 93 e laag bk steen=5.833
 92 e laag bk steen=5.770
 91 e laag bk steen=5.708
 90 e laag bk steen=5.645
 89 e laag bk steen=5.583
 88 e laag bk steen=5.520
 87 e laag bk steen=5.458
 86 e laag bk steen=5.395
 85 e laag bk steen=5.333
 84 e laag bk steen=5.270
 83 e laag bk steen=5.208
 82 e laag bk steen=5.145
 81 e laag bk steen=5.083
 80 e laag bk steen=5.020
 79 e laag bk steen=4.958
 78 e laag bk steen=4.895
 77 e laag bk steen=4.833
 76 e laag bk steen=4.770
 75 e laag bk steen=4.708
 74 e laag bk steen=4.645
 73 e laag bk steen=4.583
 72 e laag bk steen=4.520
 71 e laag bk steen=4.458
 70 e laag bk steen=4.395
 69 e laag bk steen=4.333
 68 e laag bk steen=4.270
 67 e laag bk steen=4.208
 66 e laag bk steen=4.145
 65 e laag bk steen=4.083
 64 e laag bk steen=4.020
 63 e laag bk steen=3.958
 62 e laag bk steen=3.895
 61 e laag bk steen=3.833
 60 e laag bk steen=3.770
 59 e laag bk steen=3.708
 58 e laag bk steen=3.645
 57 e laag bk steen=3.583
 56 e laag bk steen=3.520
 55 e laag bk steen=3.458
 54 e laag bk steen=3.395
 53 e laag bk steen=3.333
 52 e laag bk steen=3.270
 51 e laag bk steen=3.208
 50 e laag bk steen=3.145
 49 e laag bk steen=3.083
 48 e laag bk steen=3.020
 47 e laag bk steen=2.958
 46 e laag bk steen=2.895
 45 e laag bk steen=2.833
 44 e laag bk steen=2.770
 43 e laag bk steen=2.708
 42 e laag bk steen=2.645
 41 e laag bk steen=2.583
 40 e laag bk steen=2.520
 39 e laag bk steen=2.458
 38 e laag bk steen=2.395
 37 e laag bk steen=2.333
 36 e laag bk steen=2.270
 35 e laag bk steen=2.208
 34 e laag bk steen=2.145
 33 e laag bk steen=2.083
 32 e laag bk steen=2.020
 31 e laag bk steen=1.958
 30 e laag bk steen=1.895
 29 e laag bk steen=1.833
 28 e laag bk steen=1.770
 27 e laag bk steen=1.708
 26 e laag bk steen=1.645
 25 e laag bk steen=1.583
 24 e laag bk steen=1.520
 23 e laag bk steen=1.458
 22 e laag bk steen=1.395
 21 e laag bk steen=1.333
 20 e laag bk steen=1.270
 19 e laag bk steen=1.208
 18 e laag bk steen=1.145
 17 e laag bk steen=1.083
 16 e laag bk steen=1.020
 15 e laag bk steen=958
 14 e laag bk steen=895
 13 e laag bk steen=833
 12 e laag bk steen=770
 11 e laag bk steen=708
 10 e laag bk steen=645
 9 e laag bk steen=583
 8 e laag bk steen=520
 7 e laag bk steen=458
 6 e laag bk steen=395
 5 e laag bk steen=333
 4 e laag bk steen=270
 3 e laag bk steen=208
 2 e laag bk steen=145
 1 e laag bk steen=83
 0 e laag bk steen=20
 -1 e laag bk steen=-43
 -2 e laag bk steen=-105
 -3 e laag bk steen=-168
 -4 e laag bk steen=-230



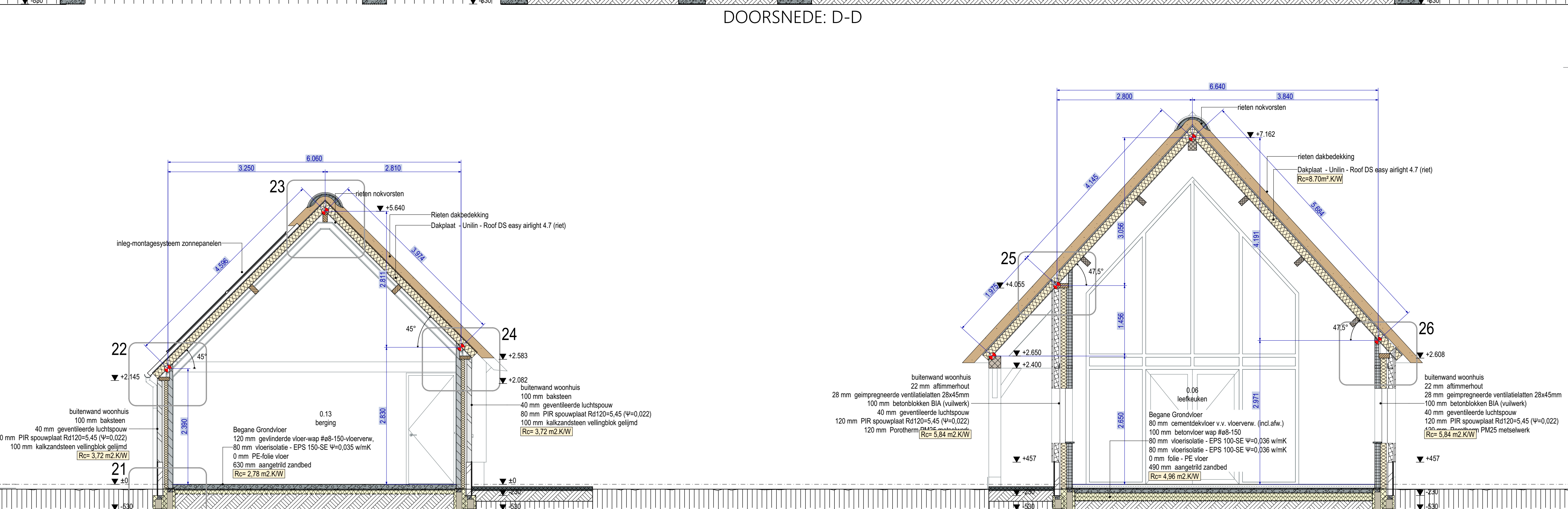
DOORSNEDE: A-A



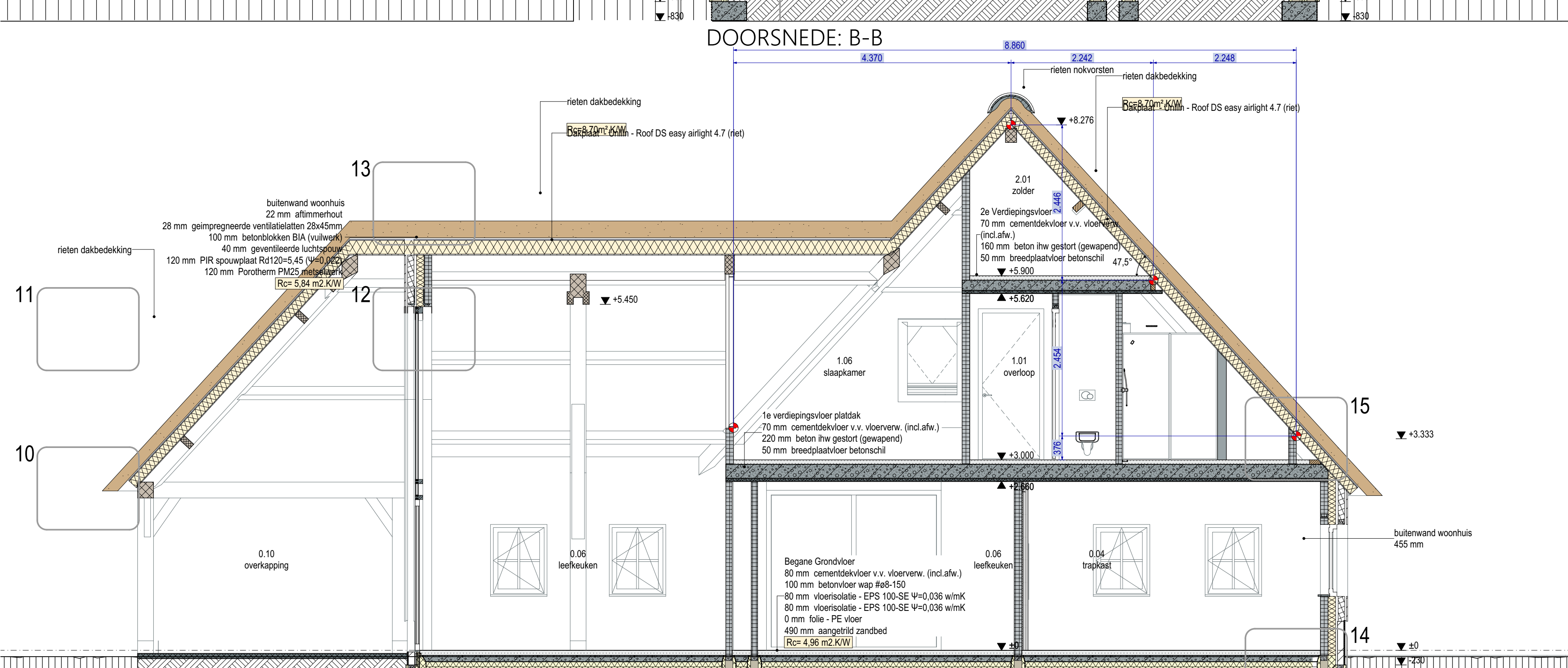
DOORSNEDE: D-D



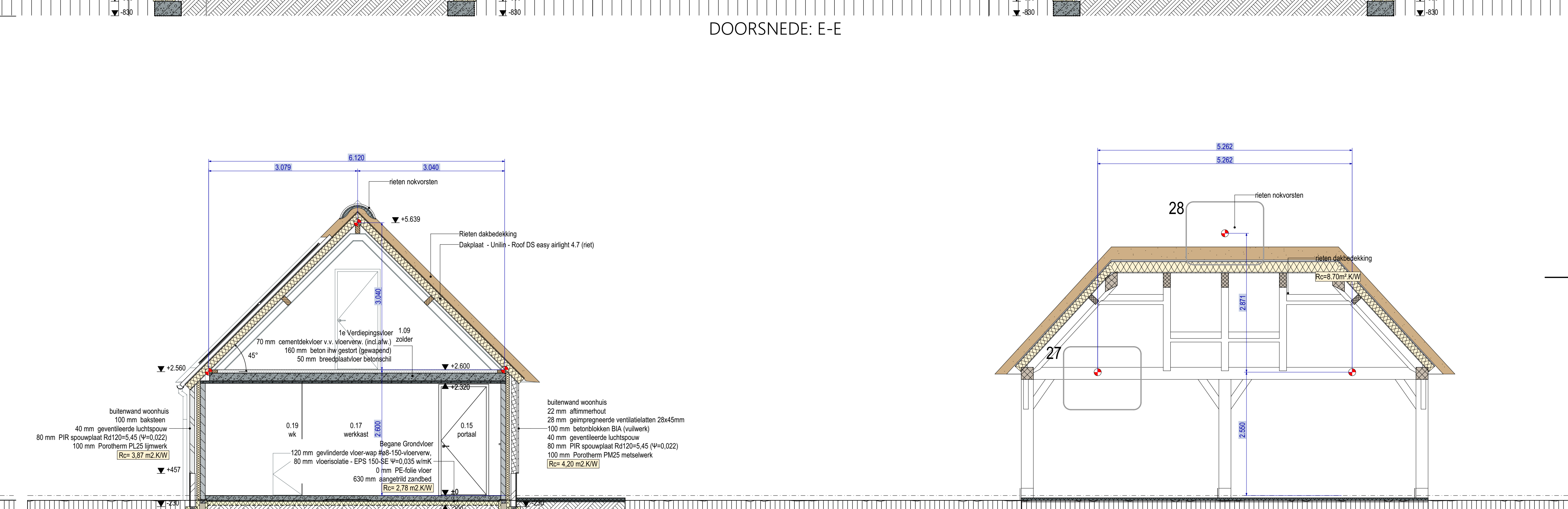
DOORSNEDE: B-B



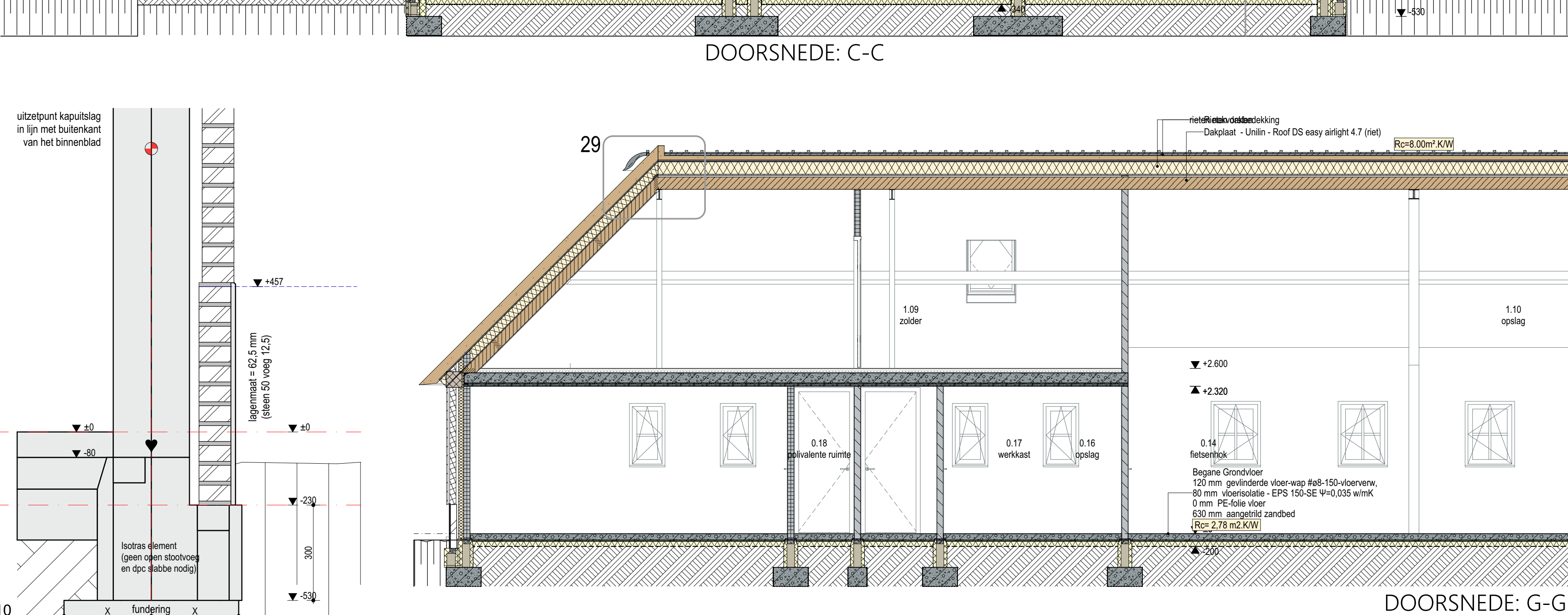
DOORSNEDE: E-E



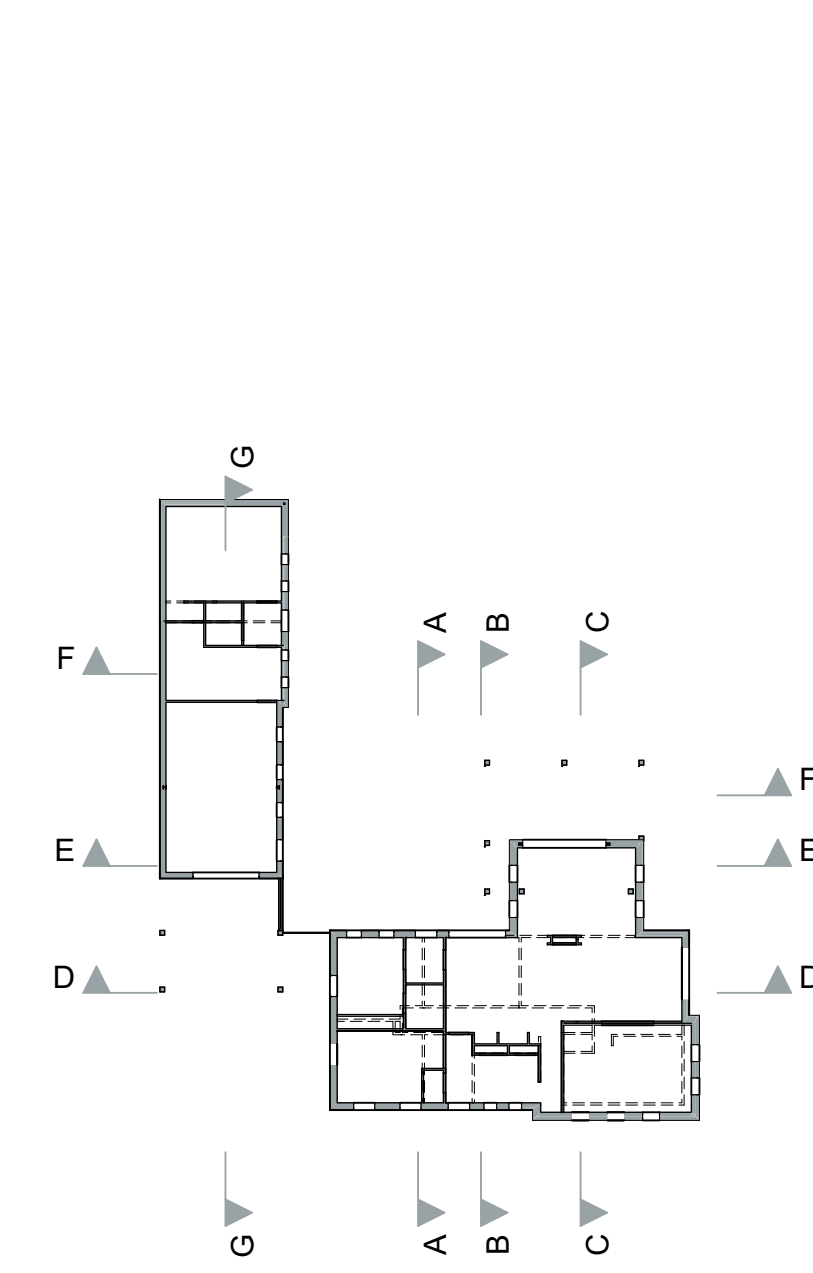
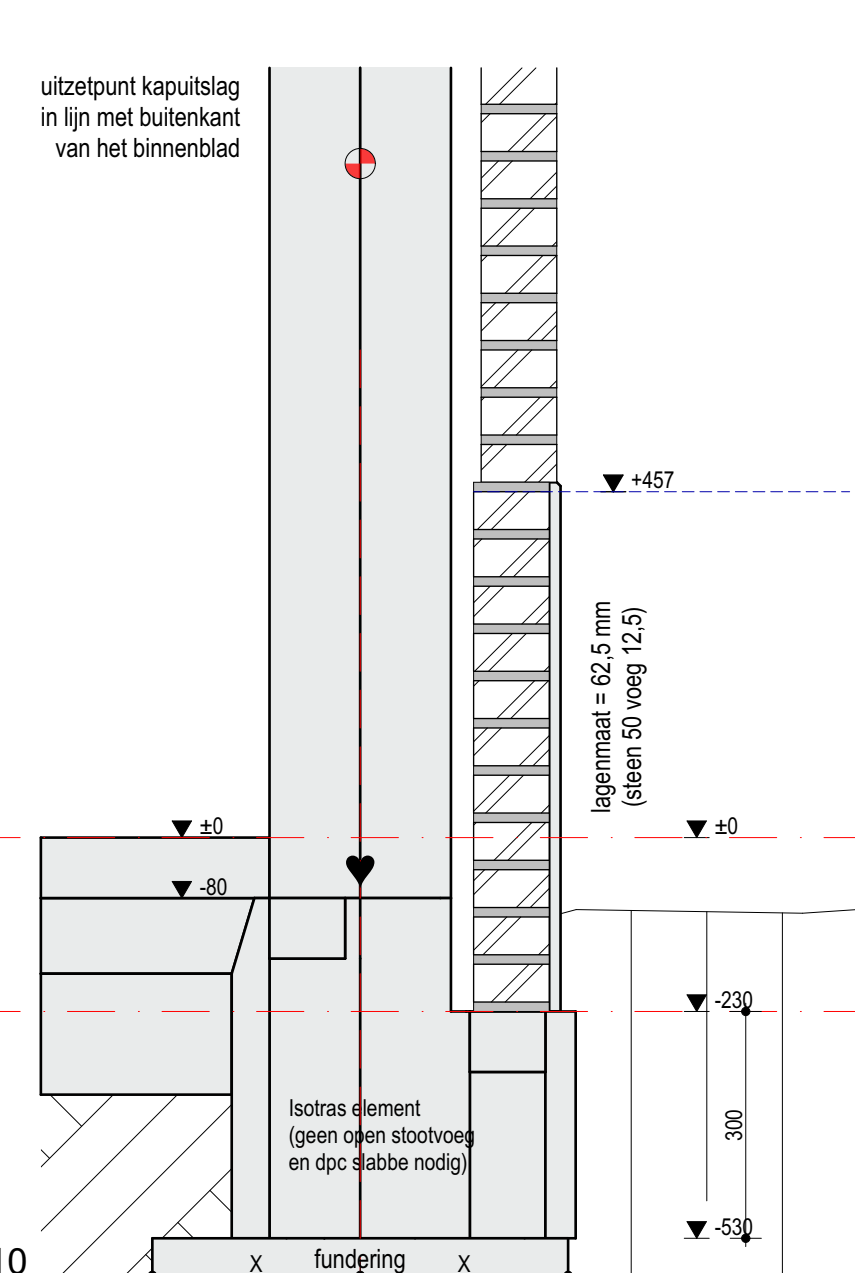
DOORSNEDE: C-C



DOORSNEDE: F-F



DOORSNEDE: G-G



bouwkundig ontwerp- & tekenbureau
LAWES
 ontwerp.

PROJECT
 bouwen van een woonboerderij met bijbehorend bouwwerk a/d Akkerstraat 3 Lage Mierde

ONDERDEEL
 DOORSNEDEN

GEWIZIGD
 25-06-2024

DATUM
 27-12-2023

GETEKEND
 F.L.

SCHAAL
 1:50, 1:10

PROJECTNUMMER
 23005

FORMAAT
 A0 841x1189

BLAD
 BT-04

OPDRACHTGEVER
 FASE
 BESTEKTEKENING
 (niet voor uitvoering)

www.lawesontwerp.nl | info@lawesontwerp.nl
 Voort 13A | 1545ER Heteren | 0497 130011
 © 2023, Lawes Ontwerp