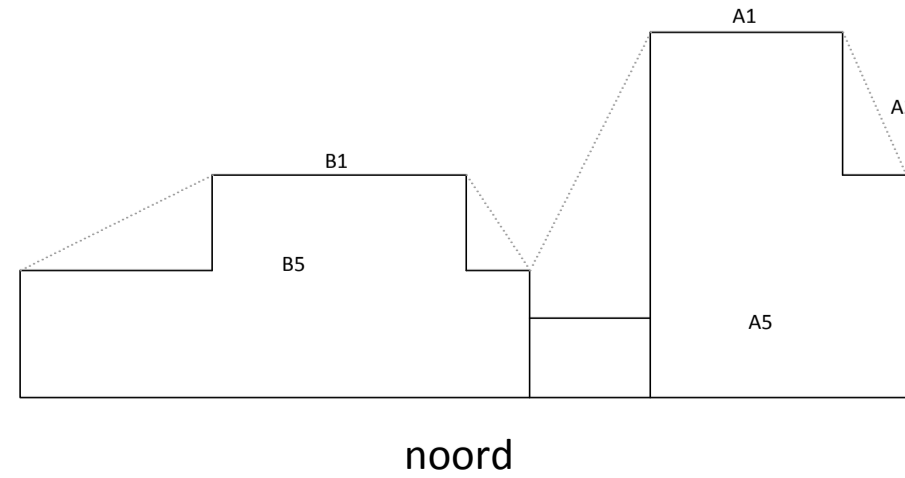
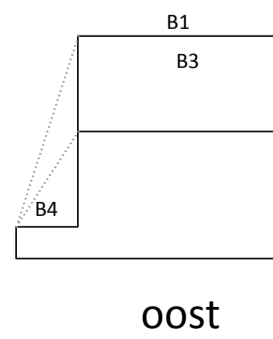
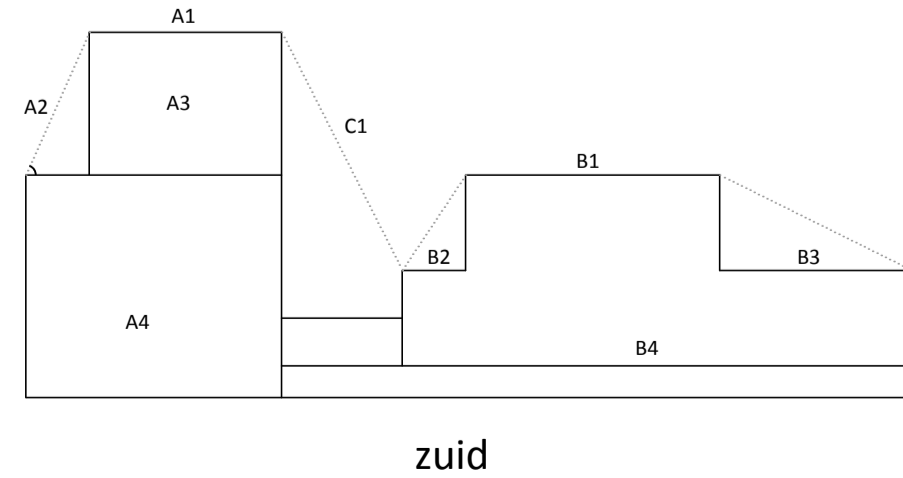
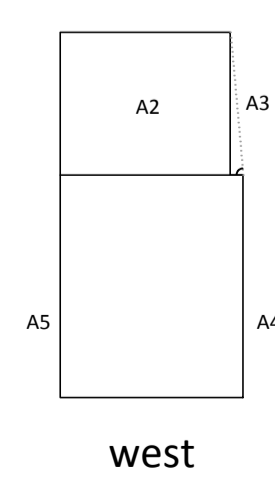
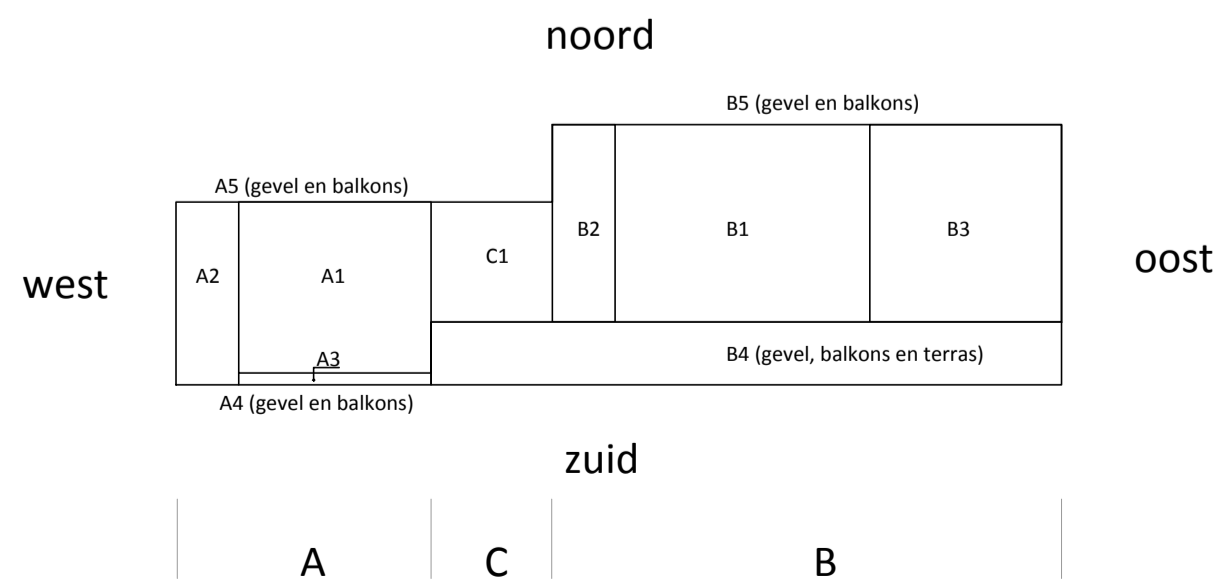
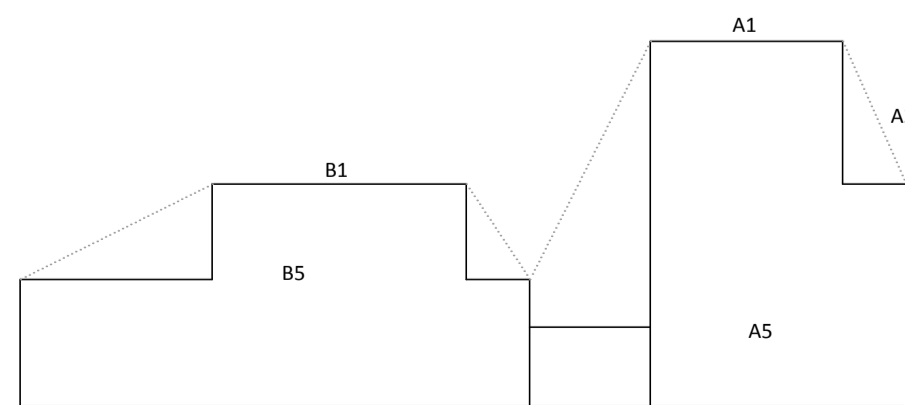
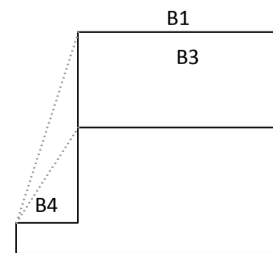
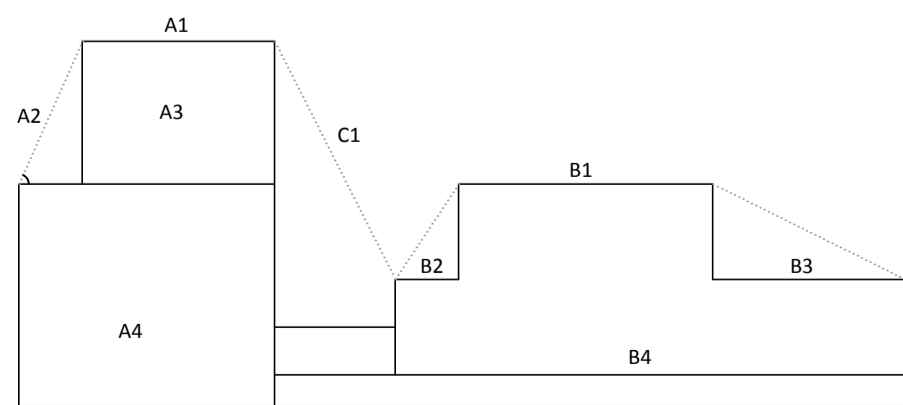
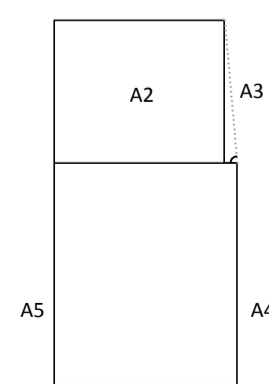
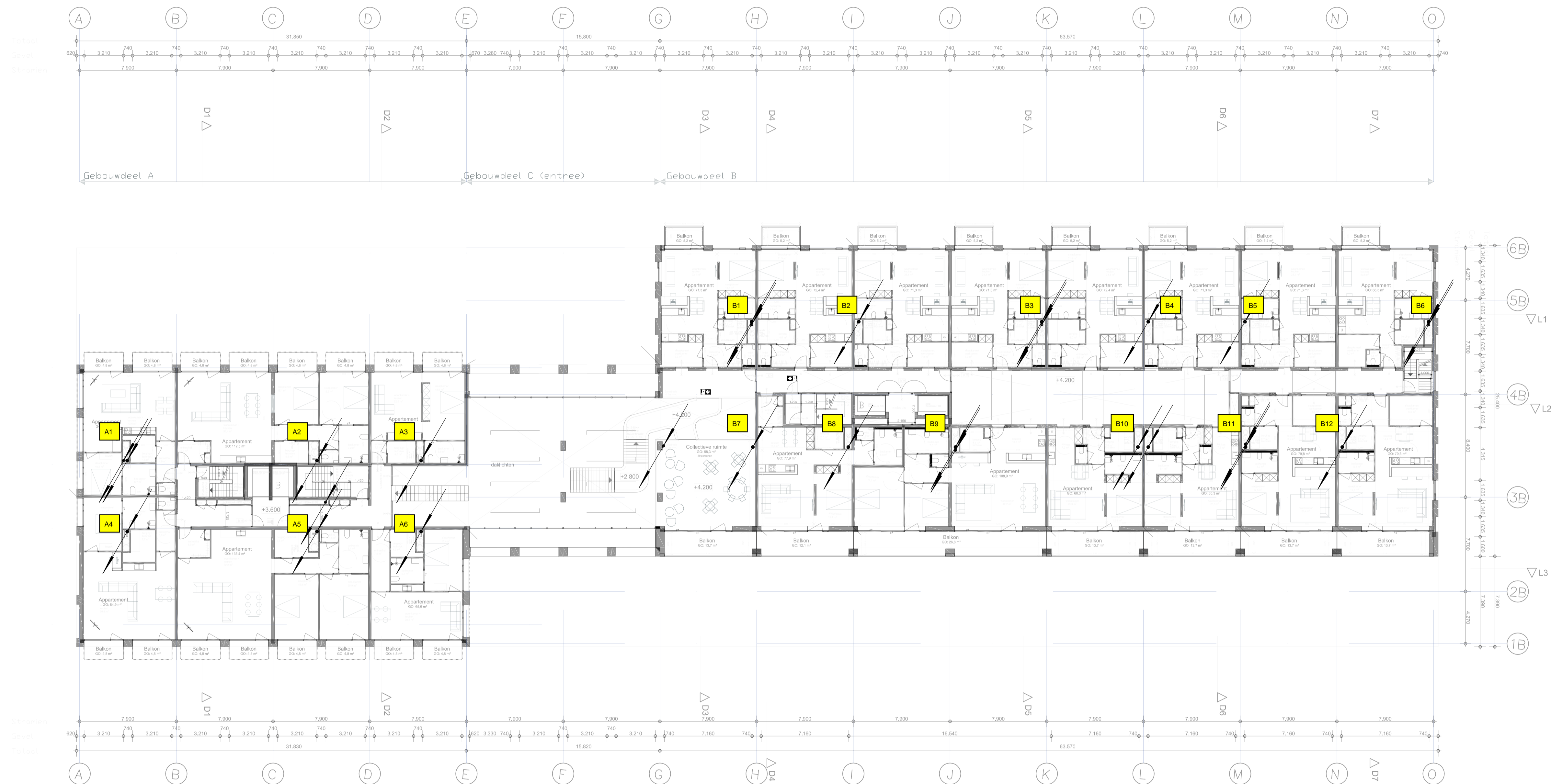


Project Q, Groningen  
17153  
Kelder  
17153-BA-W-K  
nemelwater en riolering - capaciteiten en uitlopers  
R-1  
06-05-2020



**Project Q, Groningen**  
**17153**  
**Begane grond**  
 17153-BA-W-0  
 nemelwater en riolering - capaciteiten en uitlopers  
 R-2  
 t:200  
 06-05-2020



dezwartehond\_zw\_8pt 1B89B99C.jpg

LEGENDA BRAND

[illegible]

LEGENDA OVERIC

	algemeen noodverlichting
	Kleefmagneet op branddetectie
	elektrische deur
	peilhoogte
	entree gebouwen

## Project

Project Q, Groningen

**Tekeningnummer**

OV-01

**Onderwerp**

### Plattegrond, 1e verdieping

**Projectnummer**

G171005

**Schaal**

1:200

**Datum**

27.11.2019

**Opdrachtgever**

Stichting Querido Groningen

### Formaat

**A1**

**File**

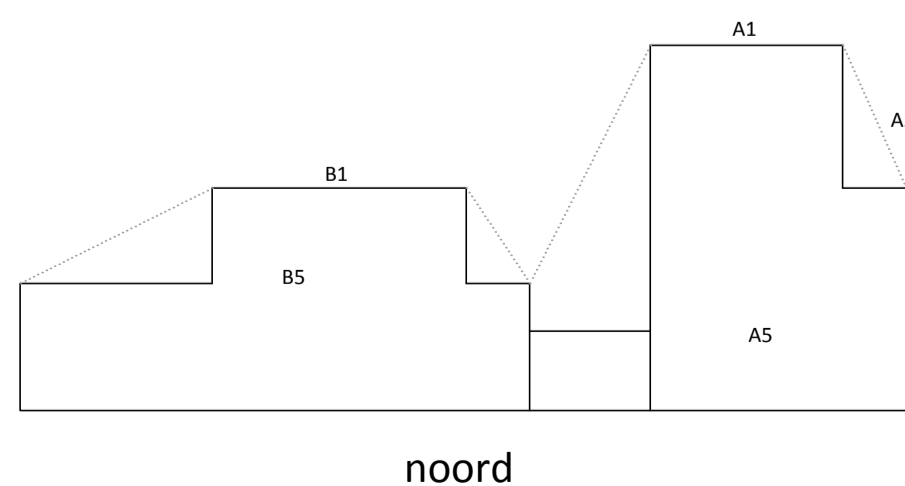
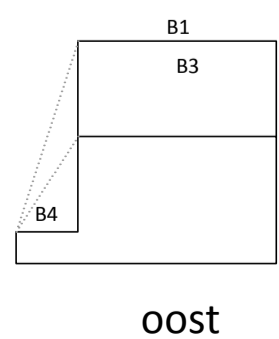
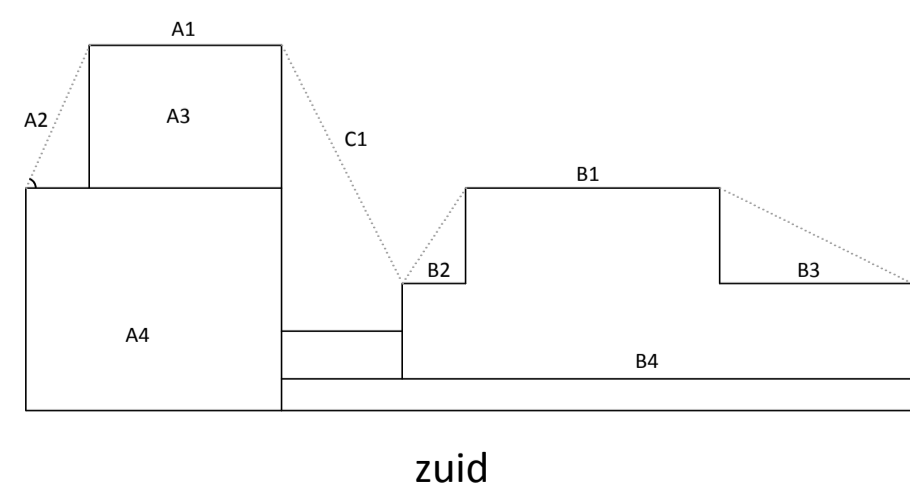
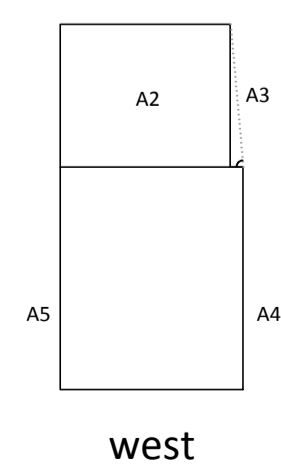
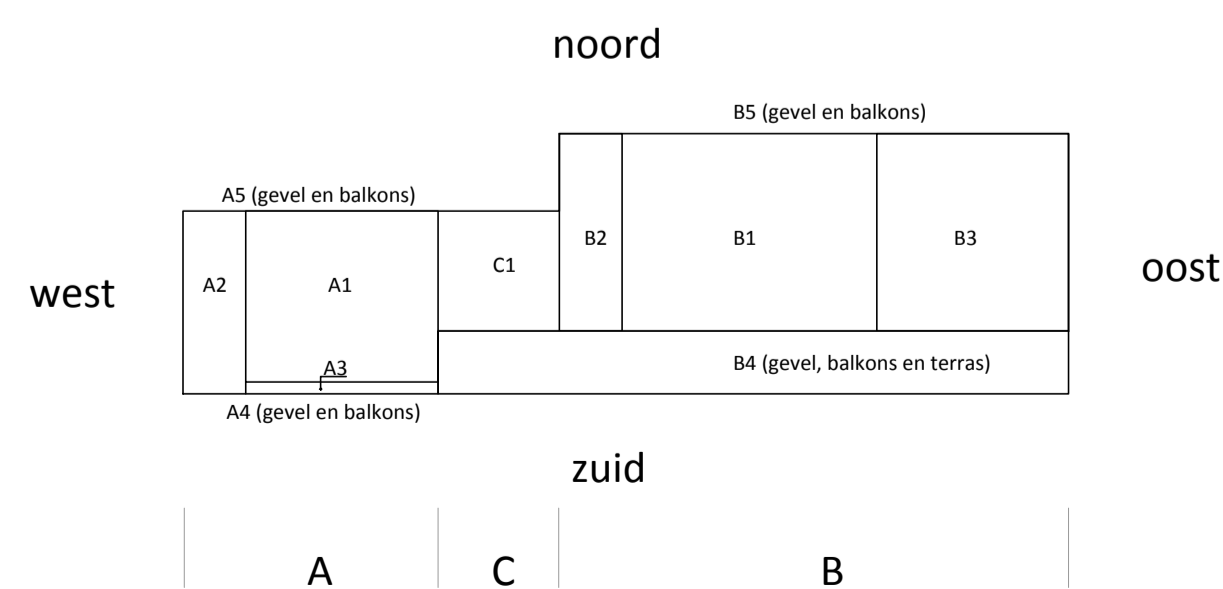
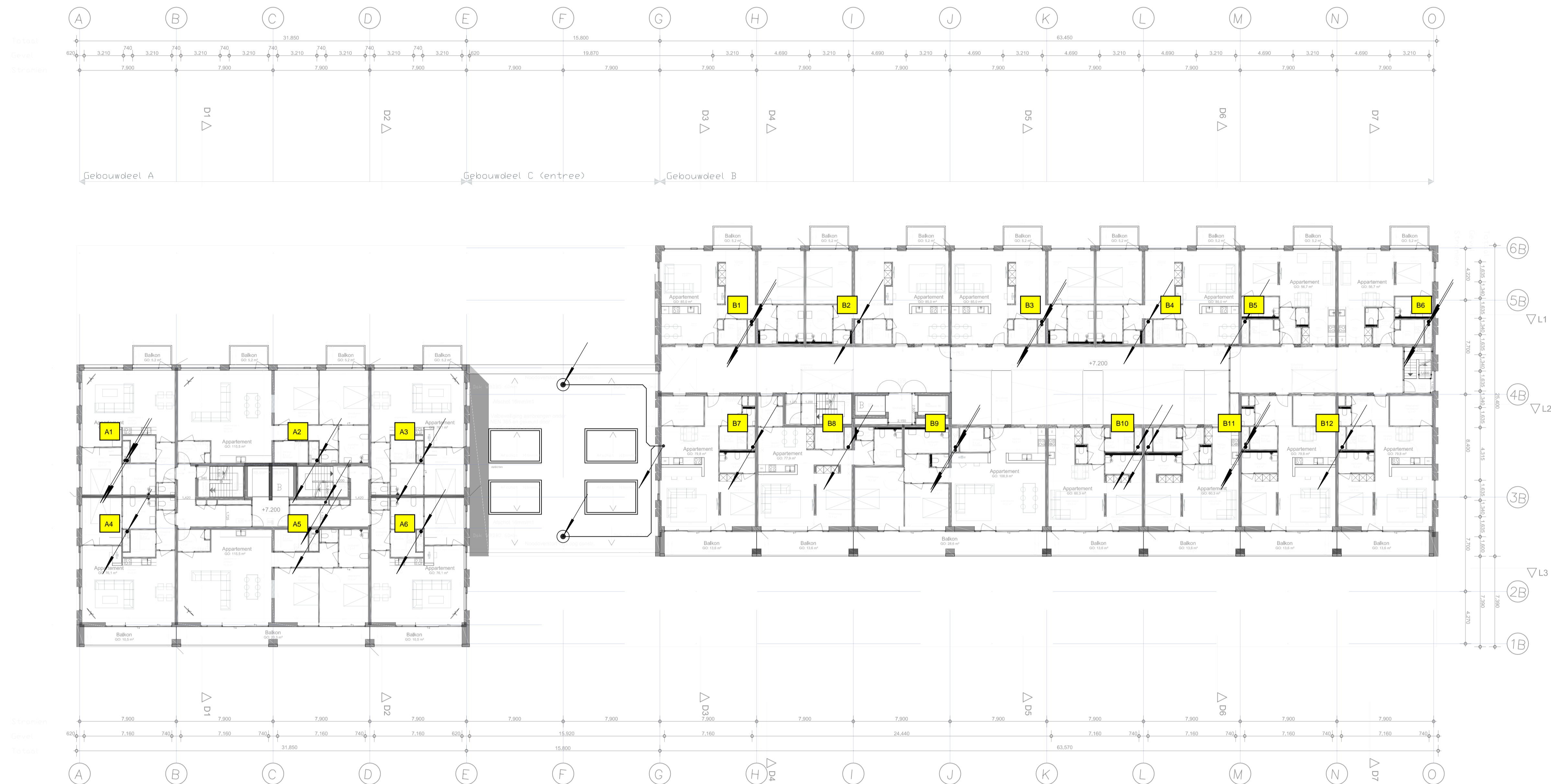
G171005 Groningen, Project Q/G171005\_Project Q

## Wijzigingen

**Datum**  
00.01.0000




**Aard**  
OVA aanvulling 2

project	<b>Project Q, Groningen</b>
kenmerk	<b>17153</b>
onderdeel	<b>1e verdieping</b>
tekening	<b>17153-BA-W-1</b>
betreft	<b>hemelwater en riolering - capaciteiten en uitlopers</b>
blad	<b>R-3</b>
schaal	<b>1:200</b>
datum	<b>06-05-2020</b>



dezwarthond\_zw\_8pt 1B89B99C.jpg

LEGENDA BRANI

	new = Einführung
	Neuweg beschreiben
	Neuweg erklären = abstrahieren (abstrakt)
	Neuweg beschreiben (abstrakt)
	Neuweg erklären
	Neuweg erklären (abstrakt)
	Neuweg erklären (abstrakt)
	Neuweg erklären (abstrakt)
	Neuweg erklären (abstrakt)
	Neuweg erklären (abstrakt)
	Neuweg erklären (abstrakt)
	Neuweg erklären (abstrakt)
	Neuweg erklären (abstrakt)
	Neuweg erklären (abstrakt)
	Neuweg erklären (abstrakt)

LEGENDA OVERIG

	algemene noodverlichting
	Reefmagneet op branddetectie
	elektrische deur
	peelhoogte
	entree rebazen

## Project

Project Q, Groningen

**Tekeningnummer**

OV-02

**Onderwerp**

Plattegrond, 2e verdieping

**Projectnummer**

G171005

### Schaal

1:200

**Datum**

27.11.2019

**Opdrachtgever**

Stichting Querido Groningen

### Formaat

A1

**File**  
G171005 Groningen, Project Q/G171005\_Project C

## Wijzigingen

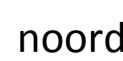
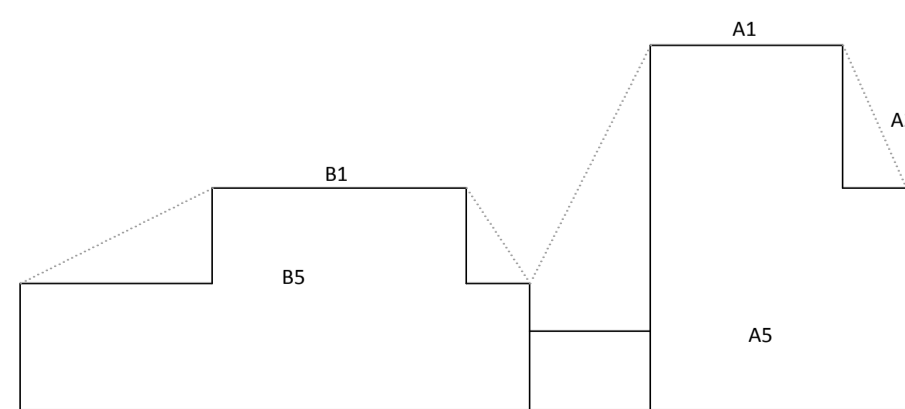
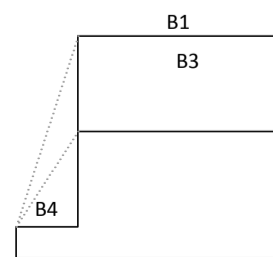
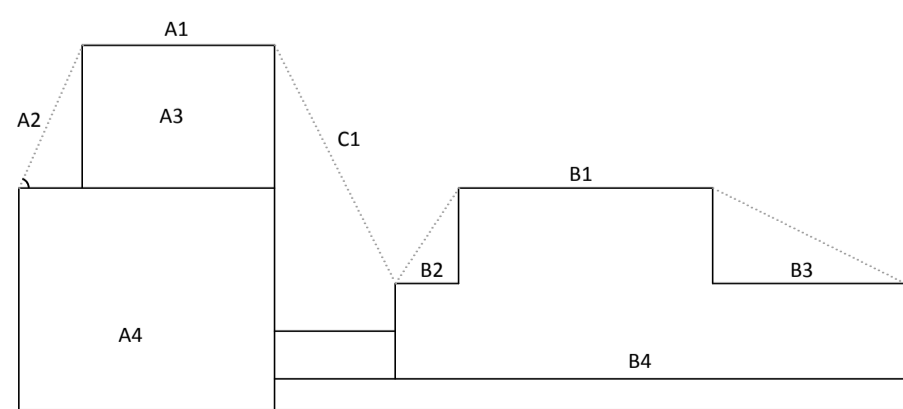
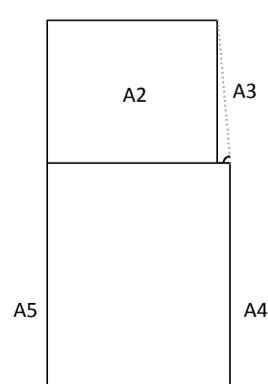
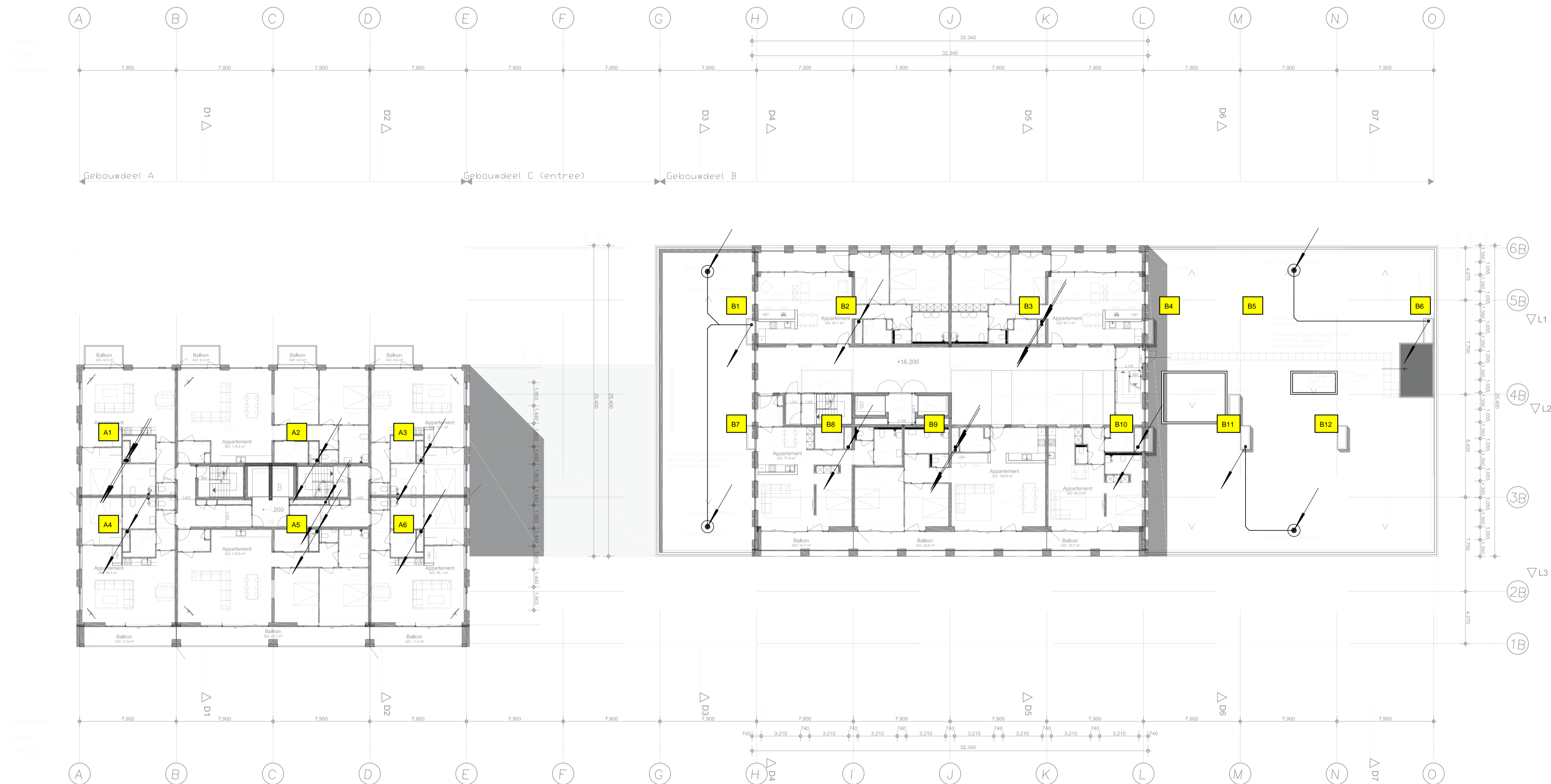
<b>Datum</b>	<b>Aard</b>
02.04.2020	OVA aanvulling 1

## Project Q, Groningen

17153


## 2e verdieping

17153-BA-W-2  
 Memelwater en riolering - capaciteiten en uitlopers  
 R-4  
 1:200  
 06-05-2020



dezwartehond\_zw\_8pt 1B89B99C.jpg




LEGENDA BRAND










1. **Introduction**  
 2. **Background**  
 3. **Methodology**  
 4. **Results**  
 5. **Discussion**  
 6. **Conclusion**  
 7. **References**  
 8. **Appendix**  
 9. **Index**  
 10. **Table of Contents**  
 11. **Figure 1**  
 12. **Figure 2**  
 13. **Figure 3**  
 14. **Figure 4**  
 15. **Figure 5**  
 16. **Figure 6**  
 17. **Figure 7**  
 18. **Figure 8**  
 19. **Figure 9**  
 20. **Figure 10**  
 21. **Figure 11**  
 22. **Figure 12**  
 23. **Figure 13**  
 24. **Figure 14**  
 25. **Figure 15**  
 26. **Figure 16**  
 27. **Figure 17**  
 28. **Figure 18**  
 29. **Figure 19**  
 30. **Figure 20**  
 31. **Figure 21**  
 32. **Figure 22**  
 33. **Figure 23**  
 34. **Figure 24**  
 35. **Figure 25**  
 36. **Figure 26**  
 37. **Figure 27**  
 38. **Figure 28**  
 39. **Figure 29**  
 40. **Figure 30**  
 41. **Figure 31**  
 42. **Figure 32**  
 43. **Figure 33**  
 44. **Figure 34**  
 45. **Figure 35**  
 46. **Figure 36**  
 47. **Figure 37**  
 48. **Figure 38**  
 49. **Figure 39**  
 50. **Figure 40**  
 51. **Figure 41**  
 52. **Figure 42**  
 53. **Figure 43**  
 54. **Figure 44**  
 55. **Figure 45**  
 56. **Figure 46**  
 57. **Figure 47**  
 58. **Figure 48**  
 59. **Figure 49**  
 60. **Figure 50**  
 61. **Figure 51**  
 62. **Figure 52**  
 63. **Figure 53**  
 64. **Figure 54**  
 65. **Figure 55**  
 66. **Figure 56**  
 67. **Figure 57**  
 68. **Figure 58**  
 69. **Figure 59**  
 70. **Figure 60**  
 71. **Figure 61**  
 72. **Figure 62**  
 73. **Figure 63**  
 74. **Figure 64**  
 75. **Figure 65**  
 76. **Figure 66**  
 77. **Figure 67**  
 78. **Figure 68**  
 79. **Figure 69**  
 80. **Figure 70**  
 81. **Figure 71**  
 82. **Figure 72**  
 83. **Figure 73**  
 84. **Figure 74**  
 85. **Figure 75**  
 86. **Figure 76**  
 87. **Figure 77**  
 88. **Figure 78**  
 89. **Figure 79**  
 90. **Figure 80**  
 91. **Figure 81**  
 92. **Figure 82**  
 93. **Figure 83**  
 94. **Figure 84**  
 95. **Figure 85**  
 96. **Figure 86**  
 97. **Figure 87**  
 98. **Figure 88**  
 99. **Figure 89**  
 100. **Figure 90**  
 101. **Figure 91**  
 102. **Figure 92**  
 103. **Figure 93**  
 104. **Figure 94**  
 105. **Figure 95**  
 106. **Figure 96**  
 107. **Figure 97**  
 108. **Figure 98**  
 109. **Figure 99**  
 110. **Figure 100**  
 111. **Figure 101**  
 112. **Figure 102**  
 113. **Figure 103**  
 114. **Figure 104**  
 115. **Figure 105**  
 116. **Figure 106**  
 117. **Figure 107**  
 118. **Figure 108**  
 119. **Figure 109**  
 120. **Figure 110**  
 121. **Figure 111**  
 122. **Figure 112**  
 123. **Figure 113**  
 124. **Figure 114**  
 125. **Figure 115**  
 126. **Figure 116**  
 127. **Figure 117**  
 128. **Figure 118**  
 129. **Figure 119**  
 130. **Figure 120**  
 131. **Figure 121**  
 132. **Figure 122**  
 133. **Figure 123**  
 134. **Figure 124**  
 135. **Figure 125**  
 136. **Figure 126**  
 137. **Figure 127**  
 138. **Figure 128**  
 139. **Figure 129**  
 140. **Figure 130**  
 141. **Figure 131**  
 142. **Figure 132**  
 143. **Figure 133**  
 144. **Figure 134**  
 145. **Figure 135**  
 146. **Figure 136**  
 147. **Figure 137**  
 148. **Figure 138**  
 149. **Figure 139**  
 150. **Figure 140**  
 151. **Figure 141**  
 152. **Figure 142**  
 153. **Figure 143**  
 154. **Figure 144**  
 155. **Figure 145**  
 156. **Figure 146**  
 157. **Figure 147**  
 158. **Figure 148**  
 159. **Figure 149**  
 160. **Figure 150**  
 161. **Figure 151**  
 162. **Figure 152**  
 163. **Figure 153**  
 164. **Figure 154**  
 165. **Figure 155**  
 166. **Figure 156**  
 167. **Figure 157**  
 168. **Figure 158**  
 169. **Figure 159**  
 170. **Figure 160**  
 171. **Figure 161**  
 172. **Figure 162**  
 173. **Figure 163**  
 174. **Figure 164**  
 175. **Figure 165**  
 176. **Figure 166**  
 177. **Figure 167**  
 178. **Figure 168**  
 179. **Figure 169**  
 180. **Figure 170**  
 181. **Figure 171**  
 182. **Figure 172**  
 183. **Figure 173**  
 184. **Figure 174**  
 185. **Figure 175**  
 186. **Figure 176**  
 187. **Figure 177**  
 188. **Figure 178**  
 189. **Figure 179**  
 190. **Figure 180**  
 191. **Figure 181**  
 192. **Figure 182**  
 193.

LEGENDA QUERIC

LEGENDA OVERTOEGANG	
	algemene noodverlichting
	loefmagneet op branddetectie
	elektrische deur
	peilhoogte
	entree gebouwen

**Project**  
Project Q, Groningen

**Tekeningnummer**  
OV-05

**Onderwerp**  
Plattegrond, 5e verdieping

**Projectnummer**  
G171005

### Schaal

1:200

**Datum**  
27.11.2019

27.11.2019

**Opdrachtgever**  
Stichting Querido Groningen

### Formaat

A1

**File**  
G171005 Groningen, Project Q/G171005\_Project Q

## Wijzigingen

<b>Datum</b>	<b>Aard</b>
02.04.2020	OVA aanvulling 2

Project Q, Groningen  
17153  
5e verdieping  
17153-BA-W-5  
Niemelwater en riolering - capaciteiten en uitlopers  
R-5  
L:200  
06-05-2020





**Datum**

Bureau 1232 Postbus 1232 9701 BE Groningen T 050 - 7502057 E [bureau@1232.nl](mailto:bureau@1232.nl) [www.1232.nl](http://www.1232.nl) KvK 01139859