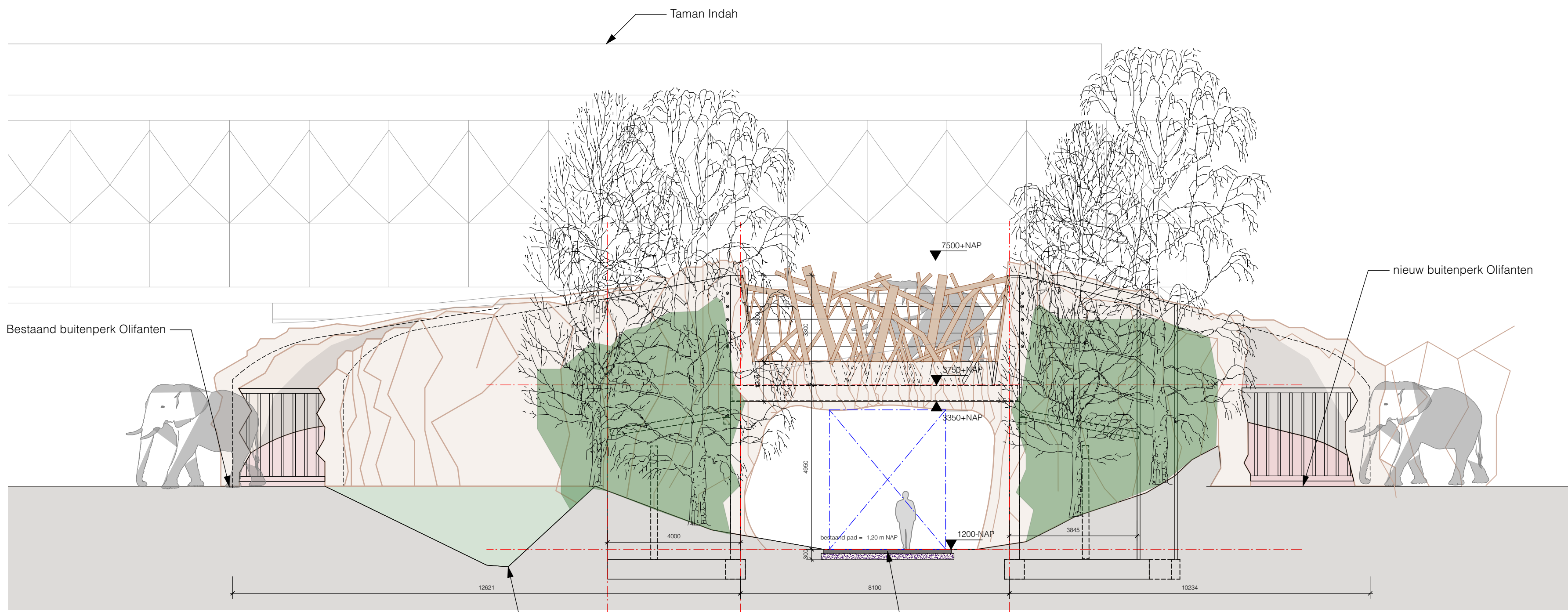
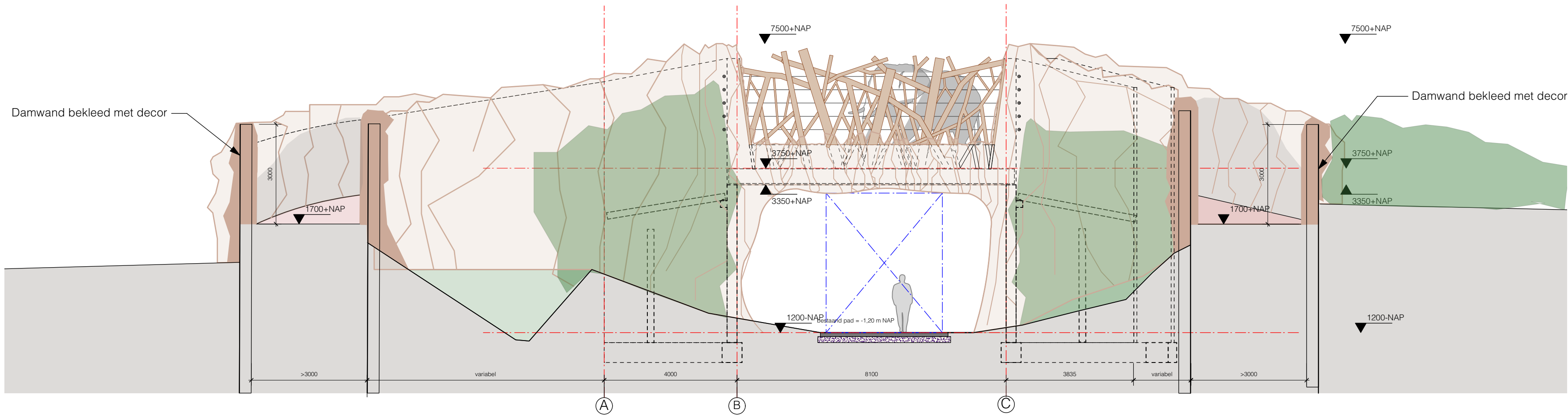


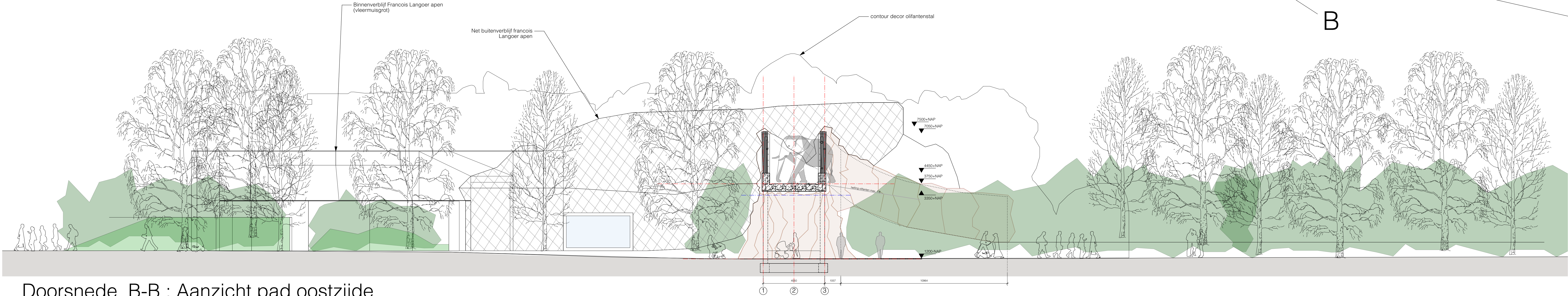
Doorsnede A-A ; Aanzicht pad westzijde



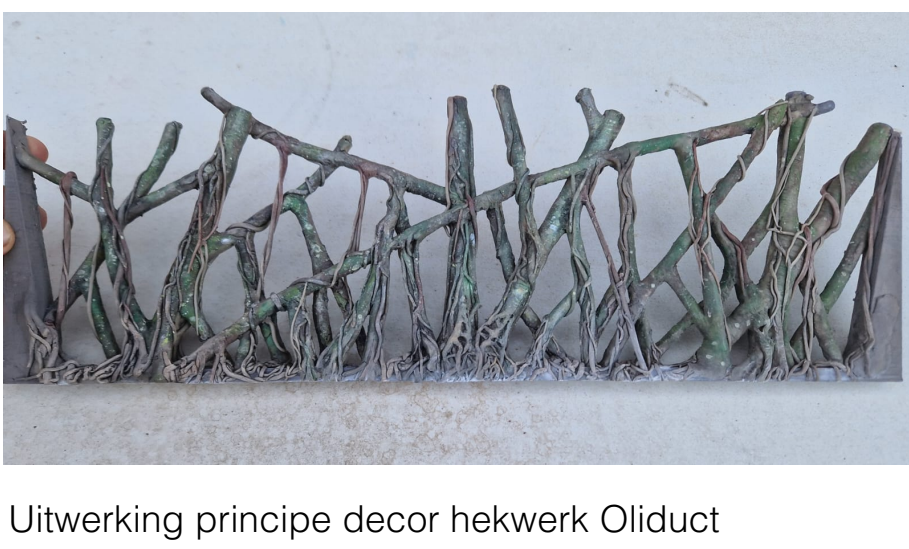
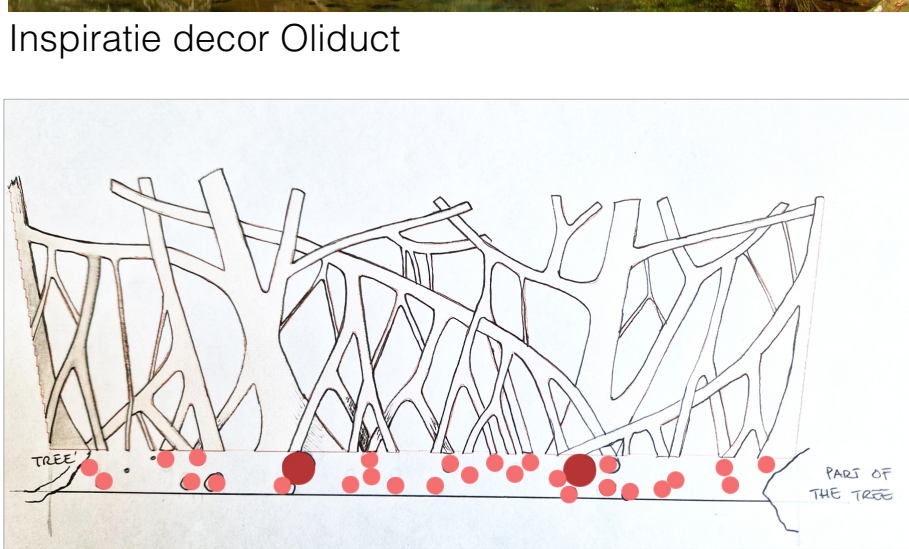
Doorsnede C-C ; Aanzicht Oliduct vanaf pad zuidzijde



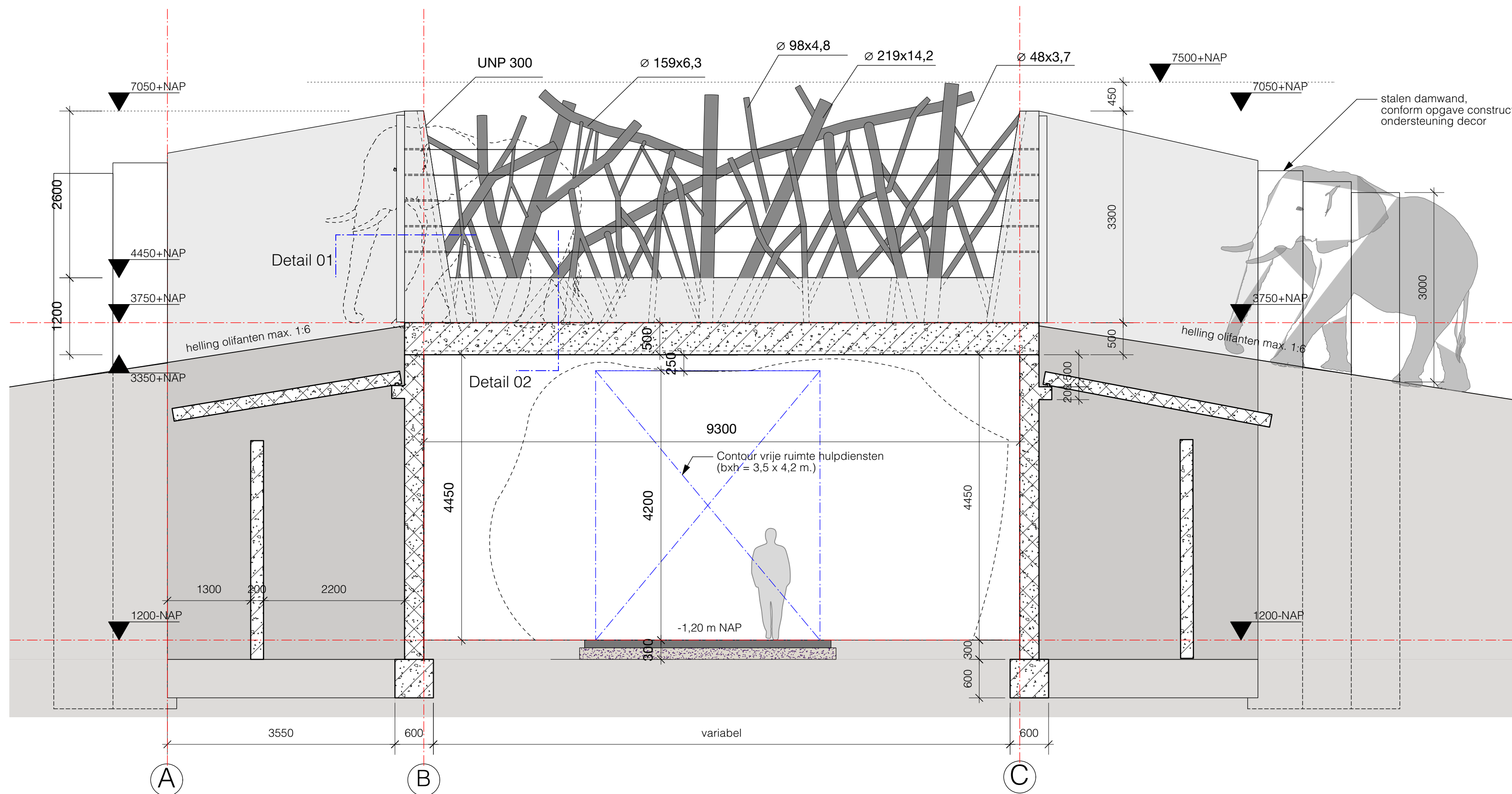
Doorsnede D-D ; Doorsnede over opgang naar Oliduct



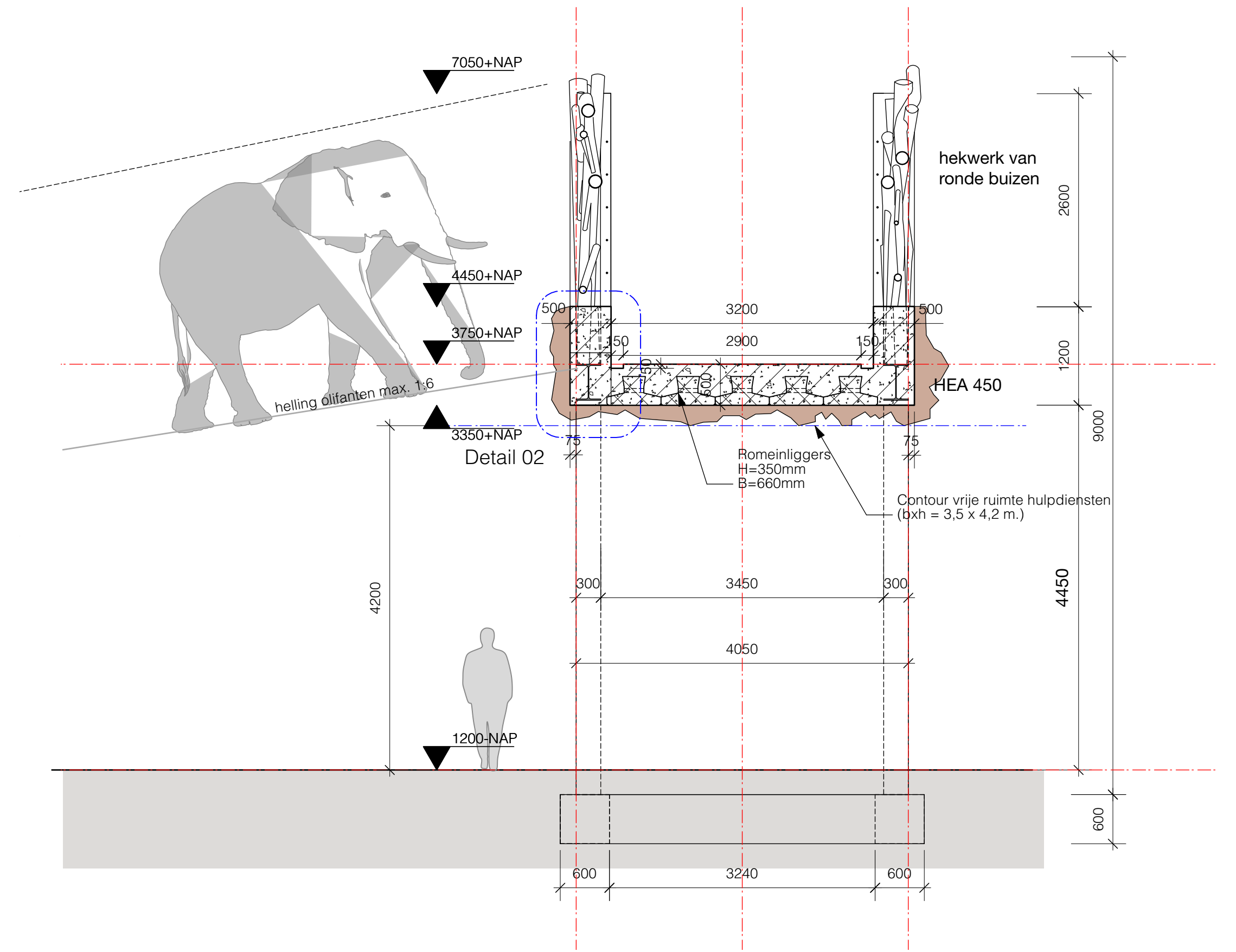
Doorsnede B-B ; Aanzicht pad oostzijde



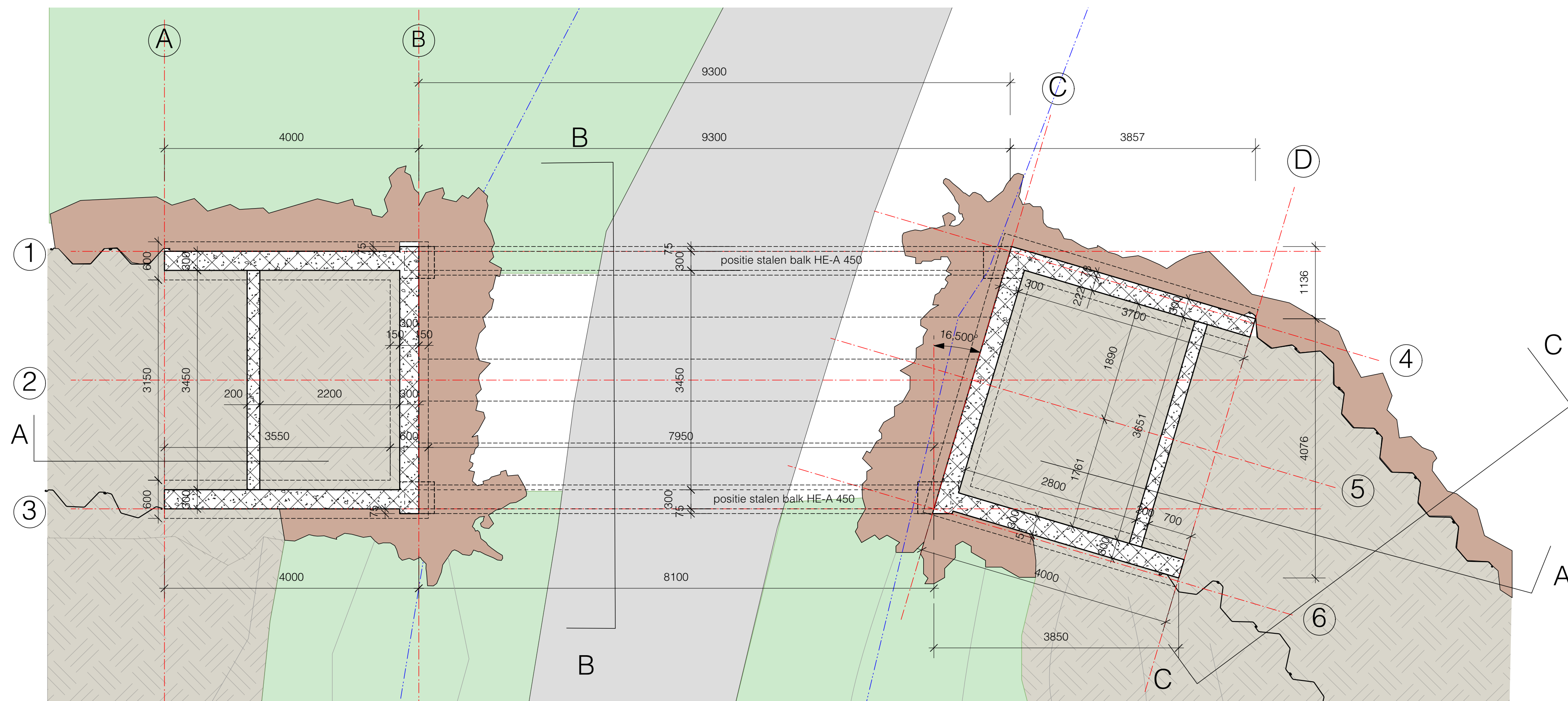
Situatie nieuw



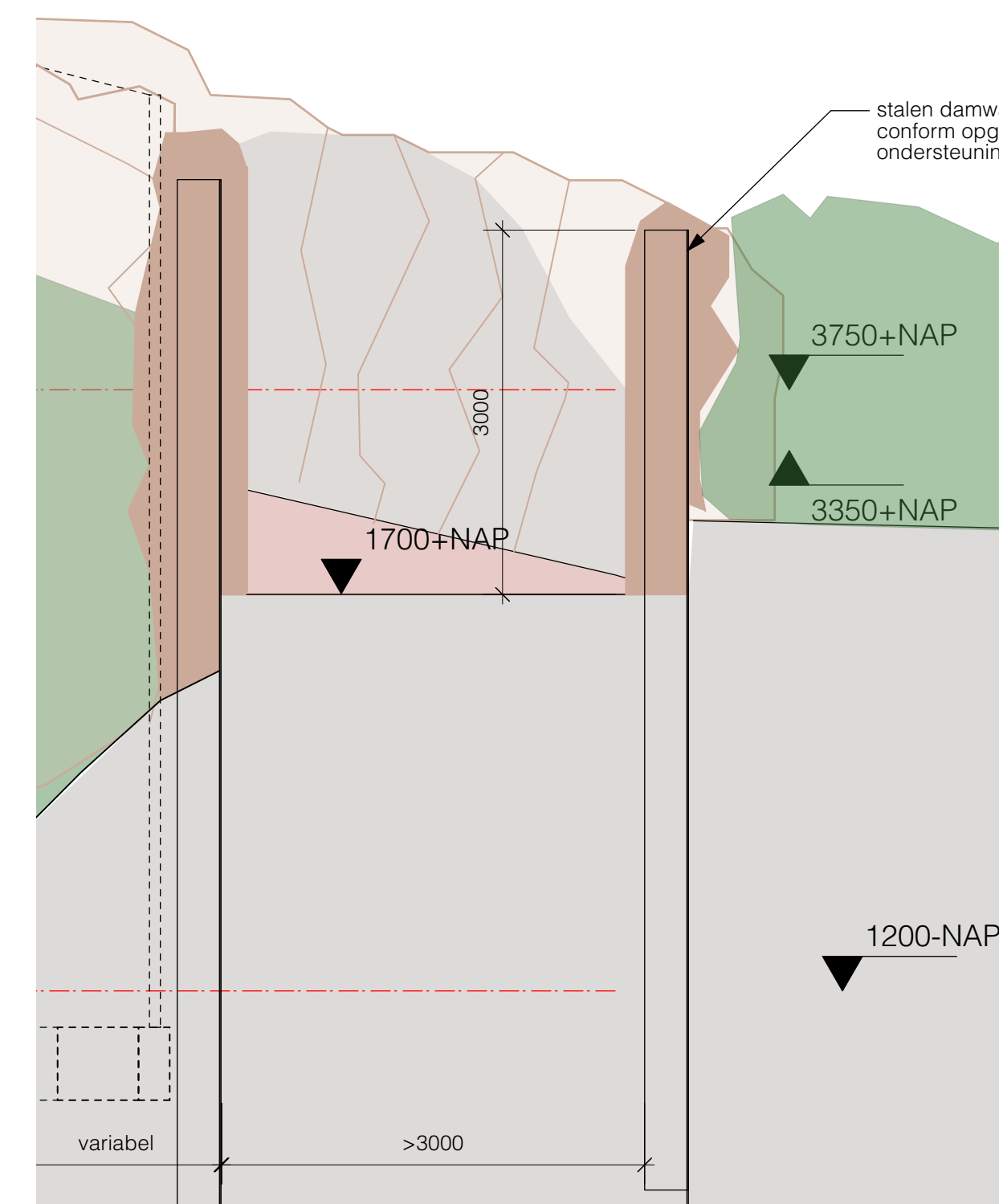
Doorsnede A-A



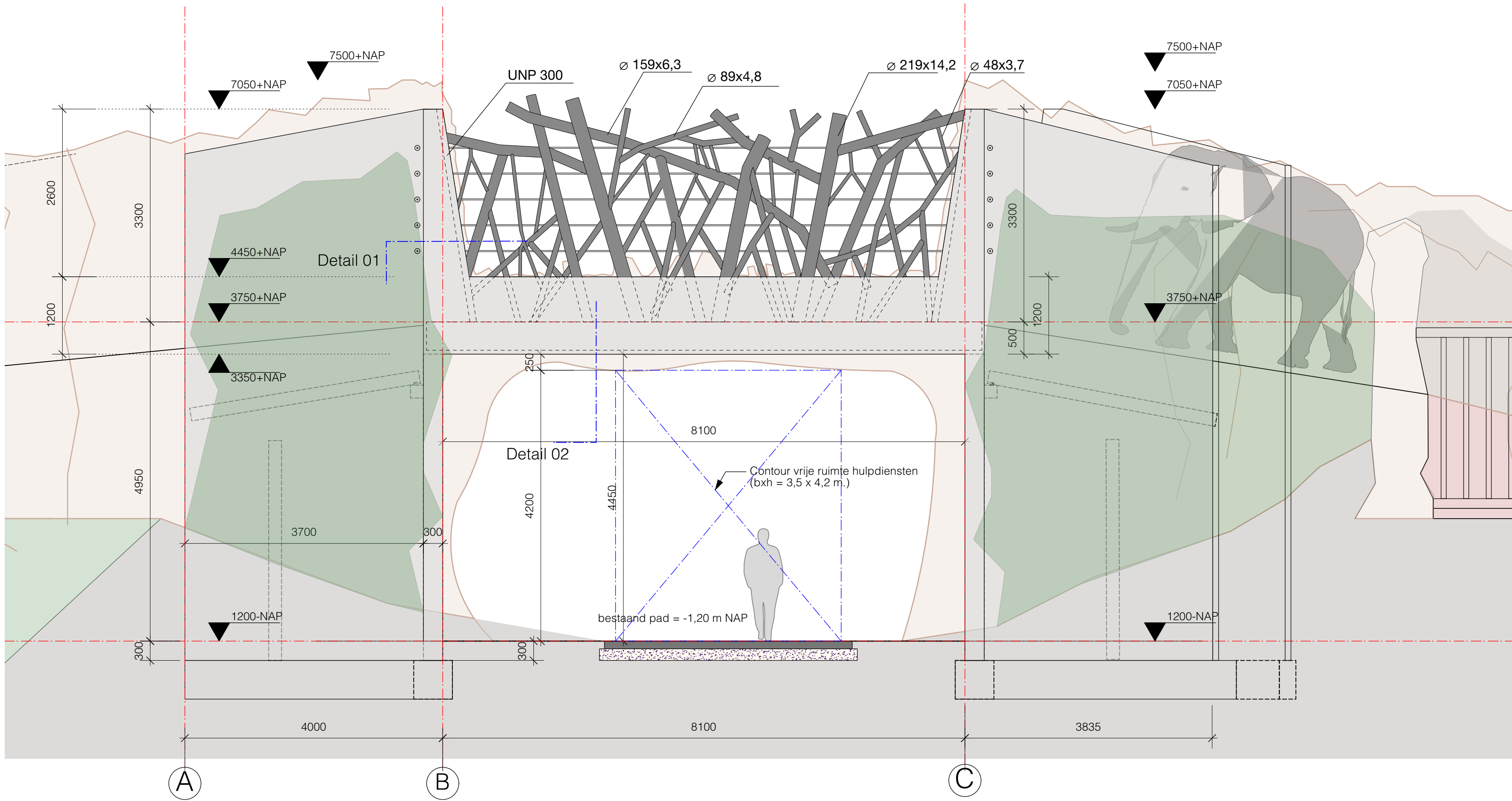
Doorsnede B-B



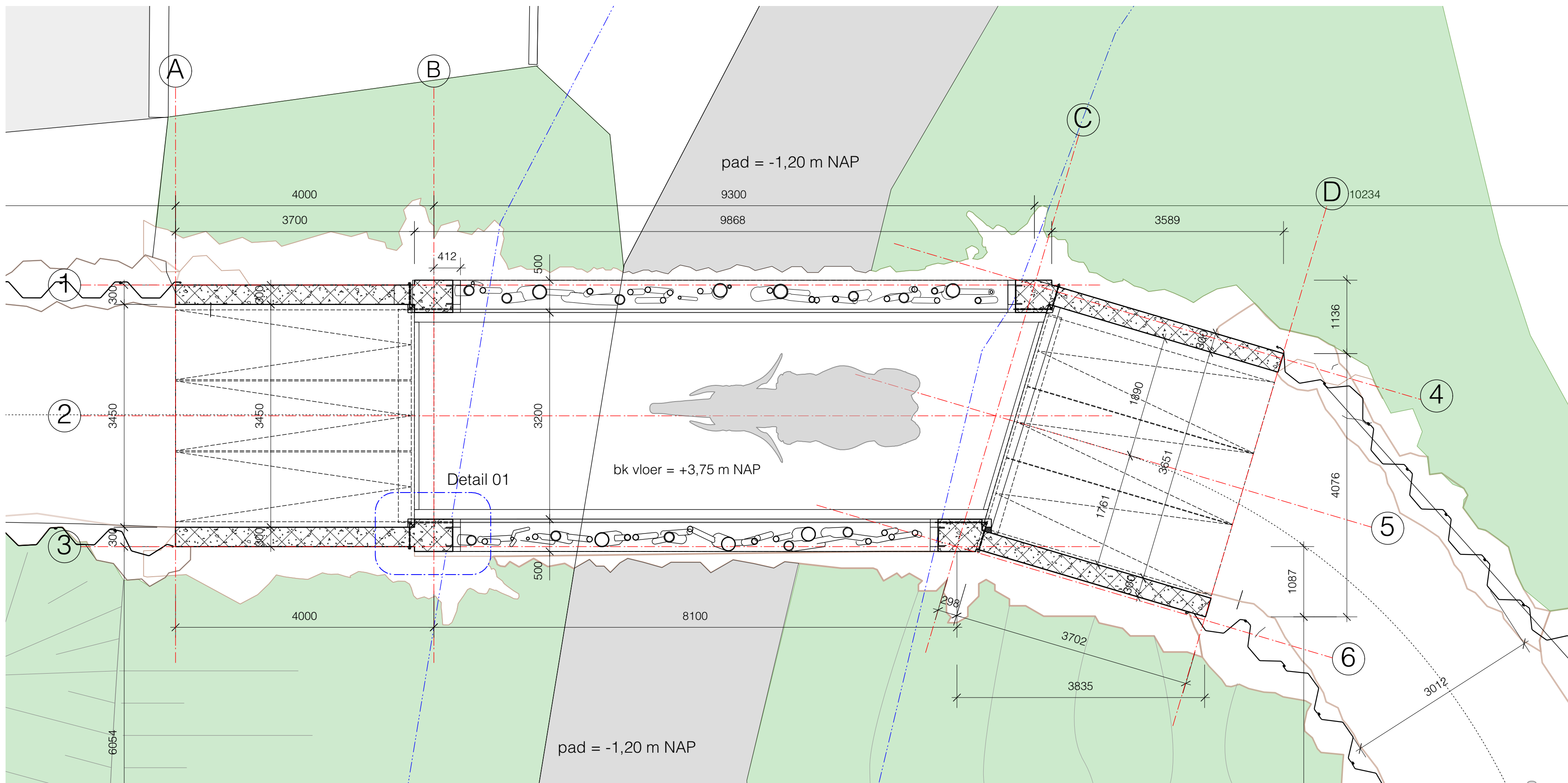
Plattegrond maaiveld



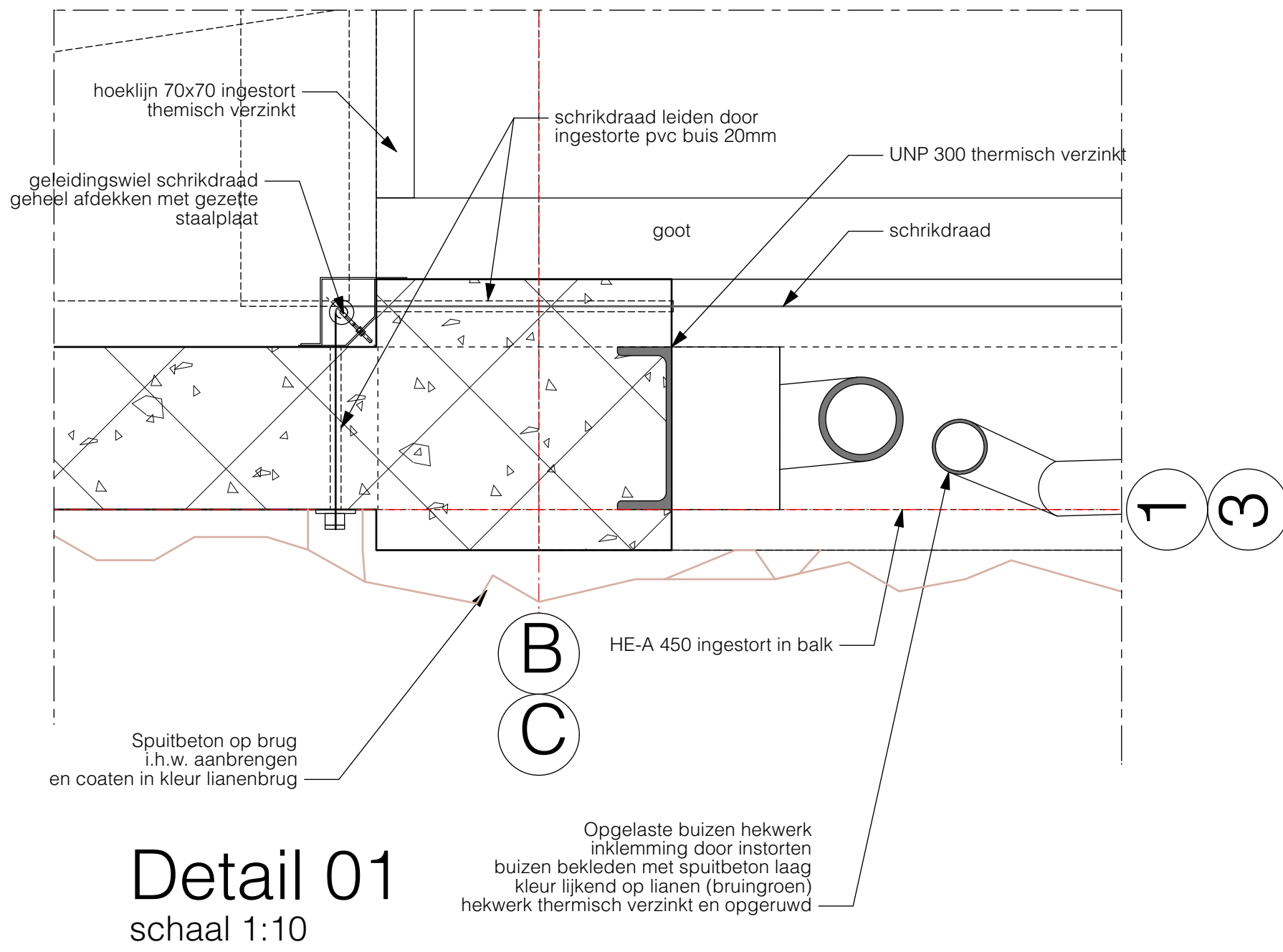
Doorsnede C-C



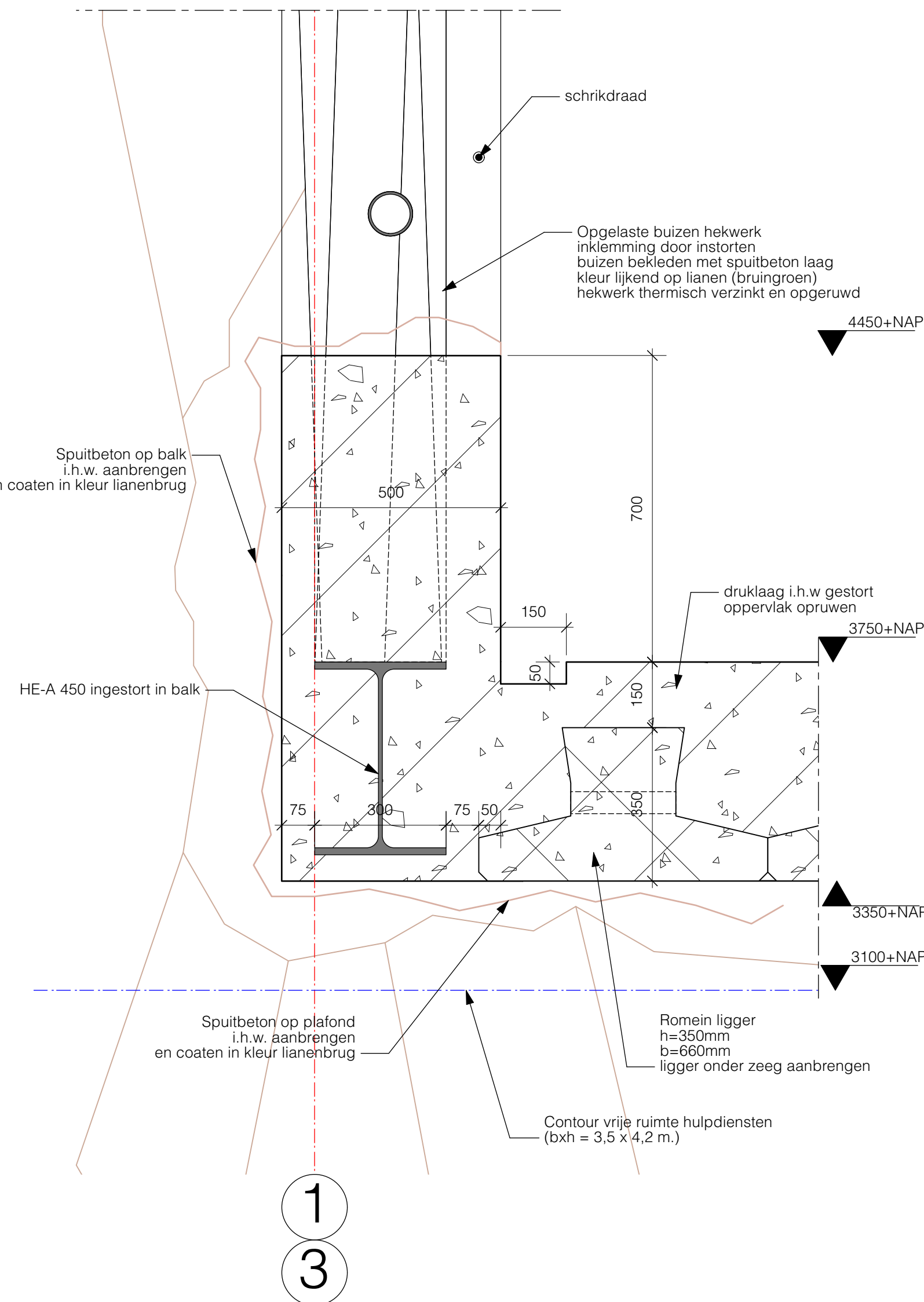
Aanzicht



Brugdek oliduct



Detail 01
schaal 1:10



Detail 02
schaal 1:10

Aansluitende hoogte maaiveld conform bestemmingsplan art 1.44 en 2.4 = hoogte publiekspad = 1200+NAP

Hersbach en Könst Architecten
Mathenesserdijk 416a
3026 GV Rotterdam
+31 (0)10 - 750 32 10
info@hersbachenkunst.nl

Opdrachtgever: Koninklijke Diergaarde Blijdorp

Project: Olifantenproject Olieeduct

Onderdeel: Brugdek en aanzicht
Principedetails

Datum: 28-02-2024

Schaal: 1:50 / 1:10

Formaat: A1

wijziging: A 15-04-2024 Projectnr.: 2213

B Tek.n.r.: BA-OD-200

C

D