

Item	PartNo	Description	Qty.	Material	Remark
1	-	Foundation	1	Concrete	-
2	H4944-tek10-200	Assembly CO2 liquefaction container	1	-	-
3	B0000-tek06-251	Assembly carbon filter	1	-	-
4	-	CO2 storage tank 60m3 vertical	2	-	-

**Notes:**

**General requirements:**

No inclination of concrete floor allowed. Flat concrete floor surface required.  
 To prevent slip hazard it is recommend to apply transverse grooved concrete structure as a surface treatment, This can be achieved by a rake.  
 Typical depth of the grooves is 2 - 3 mm.

Flatness according NEN-2747:2001 class 5 or higher.

**Compressor requirements:**

Flatness according NEN-2747:2001 class 1.  
 Concrete thickness minimum 250mm.  
 Uncracked concrete with a minimum compressive resistance of 30 N/mm2.  
 Floor under concrete with a minimum compressive resistance of 2 kg/cm2.

02	26-05-2023	Added storage and filter, changed foundation			
01	13-04-2023	Changed flatness at compressor subskid area			

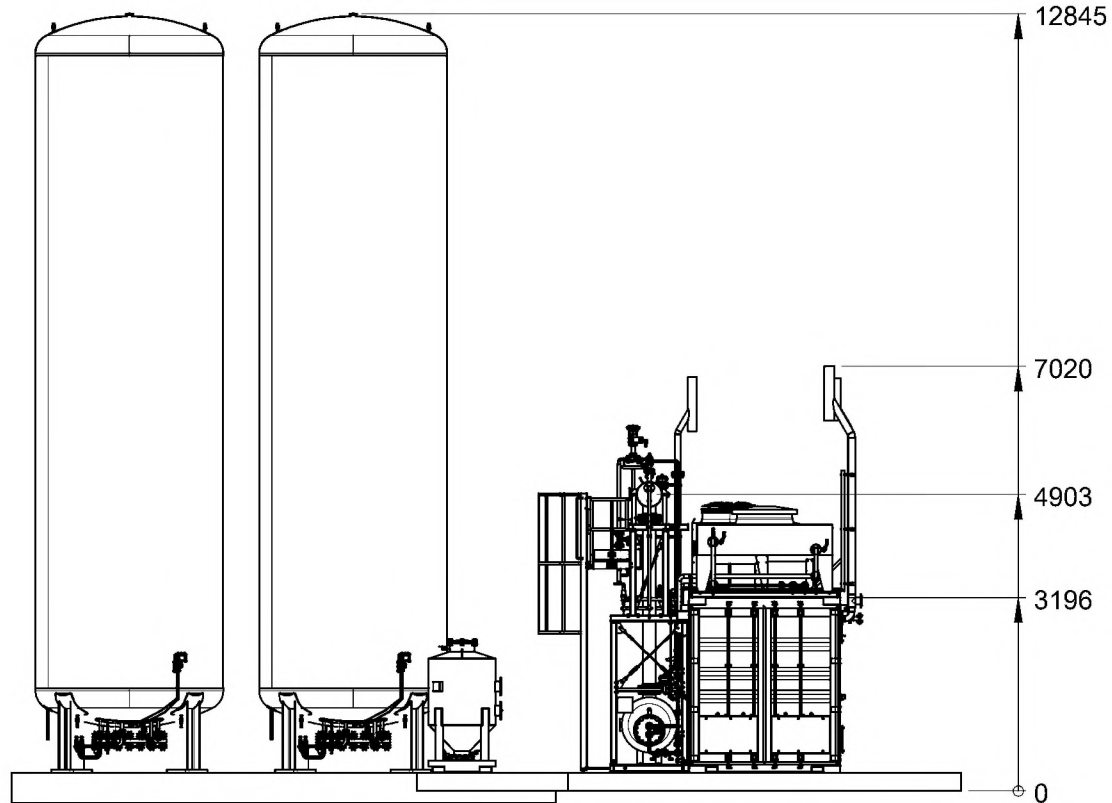
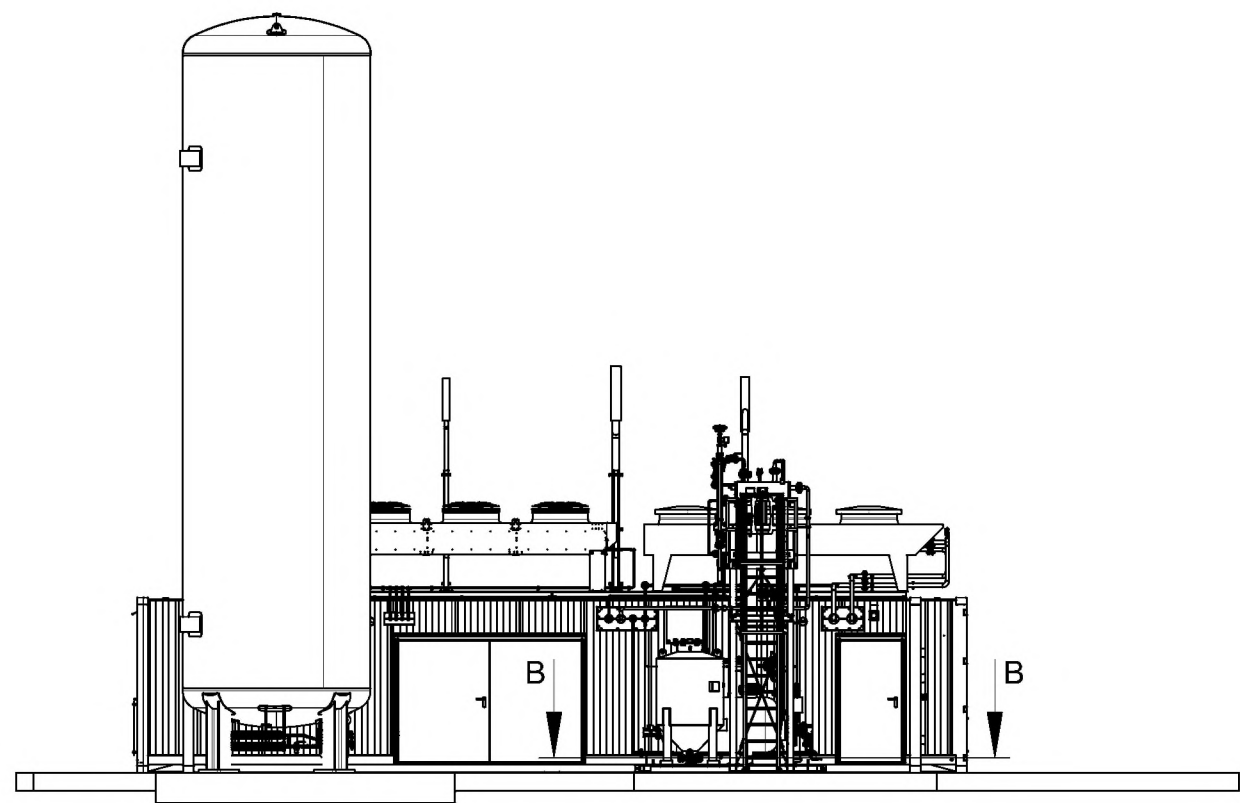
Rev.	Date	Description	Drawn by	Checked by	Approved by



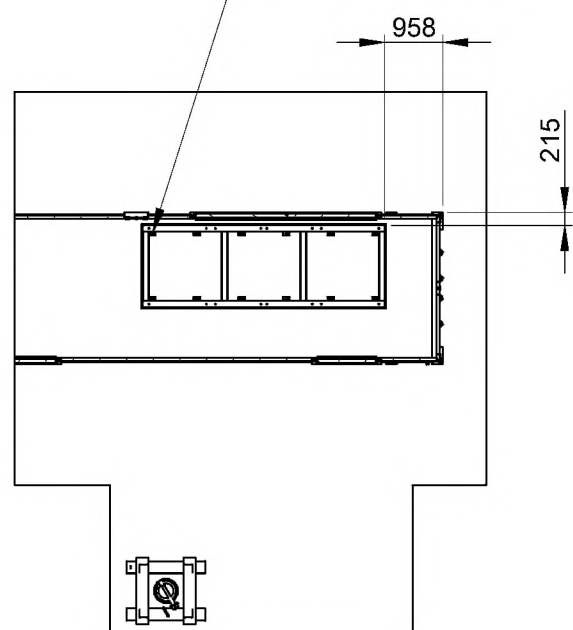
Drawn by	
Checked by	
Approved by	

Title <b>Layout CO2 liquefaction</b>			Unless otherwise specified all dimensions are in mm		
Drawing no. <b>H4944-tek02-200</b>	Rev. <b>02</b>	Plot date <b>30-5-2023</b>	Date rev. 0 (original) <b>11-04-2023</b>	Projection 	
Project name <b>RVO HR-gas</b>			Scale <b>1:100</b>	Size <b>A3</b>	Sheet <b>1 of 5</b>


THIS DRAWING REMAINS THE PROPERTY OF BRIGHT AND MUST BE NEITHER BE PASSED ON TO ANY PERSON NOT AUTHORIZED NOR BE REPRODUCED OR OTHERWISE MADE USE OF ANYBODY WITHOUT OUR PERMISSION.

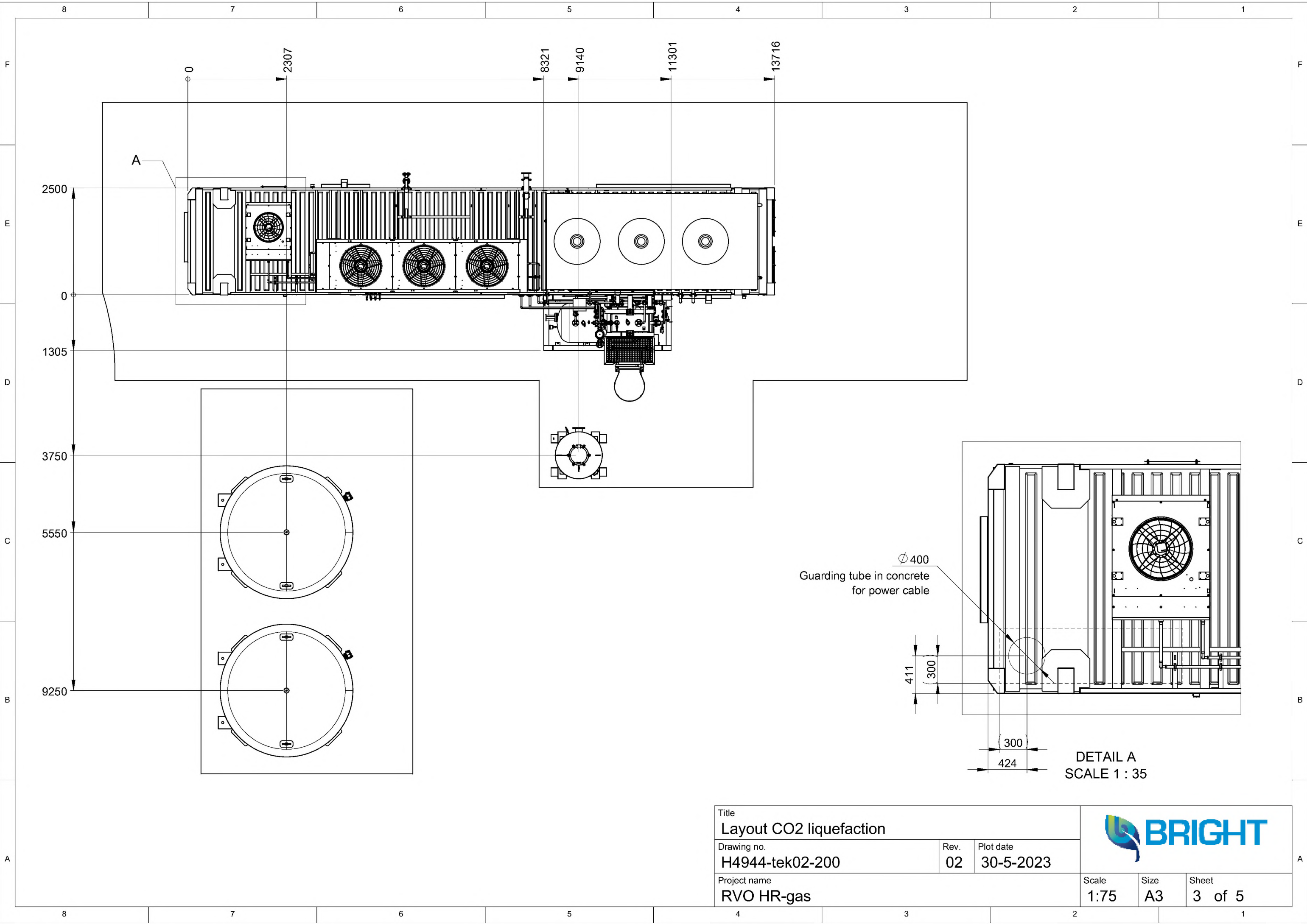


M16 anchor stud bolt L=200mm  
 Hole depth 150mm (12x)  
 Resin HY 200-A  
 Double hex nut M16 (fixing torque 80 Nm)  
 M16 heavy washer DIN 7349



SECTION B-B  
 Fixation subskid to concrete

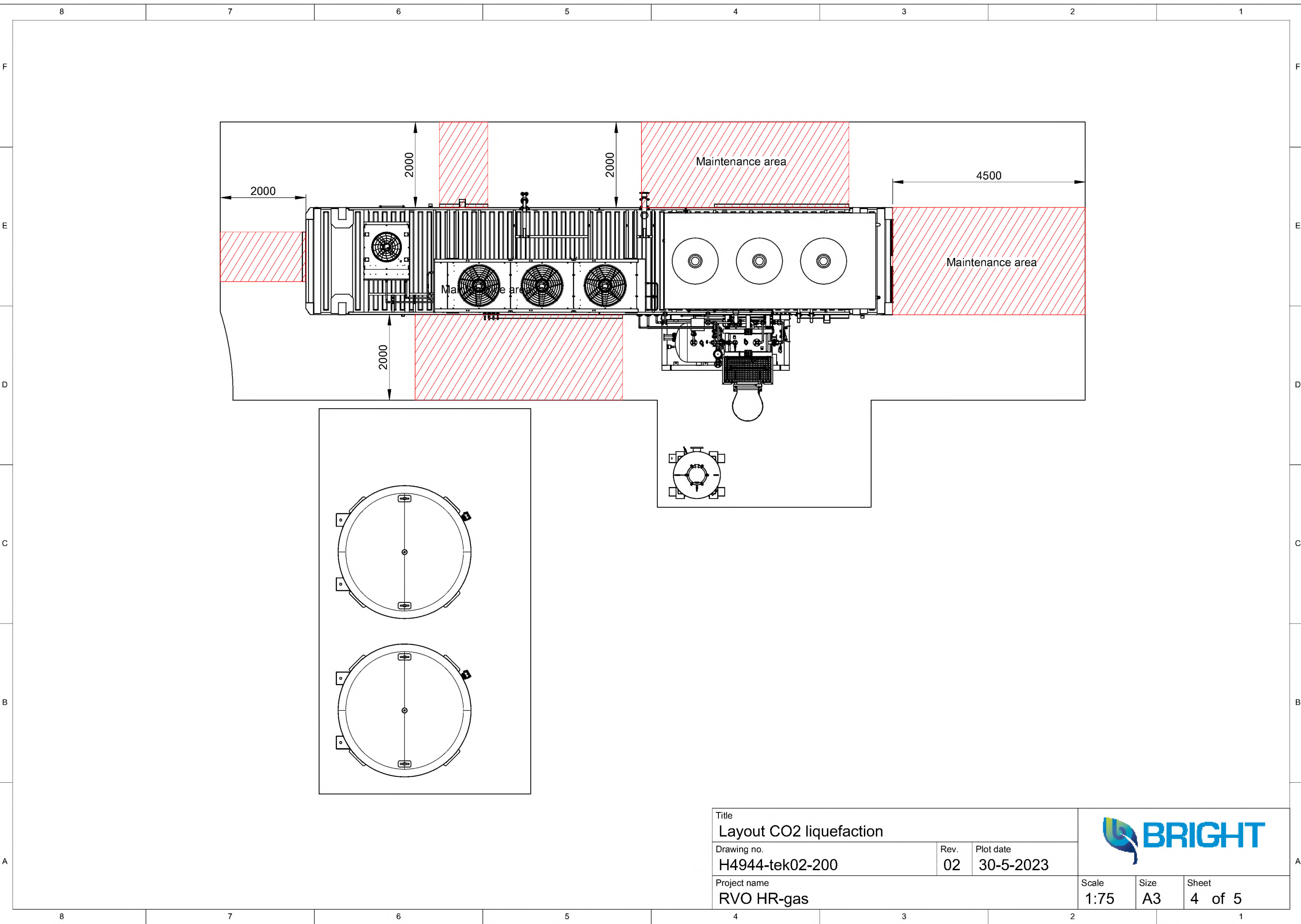
Title Layout CO2 liquefaction					
Drawing no. H4944-tek02-200		Rev. 02			Plot date 30-5-2023
Project name RVO HR-gas			Scale 1:125	Size A3	Sheet 2 of 5



Title Layout CO2 liquefaction		
Drawing no. H4944-tek02-200	Rev. 02	Plot date 30-5-2023
Project name RVO HR-gas		



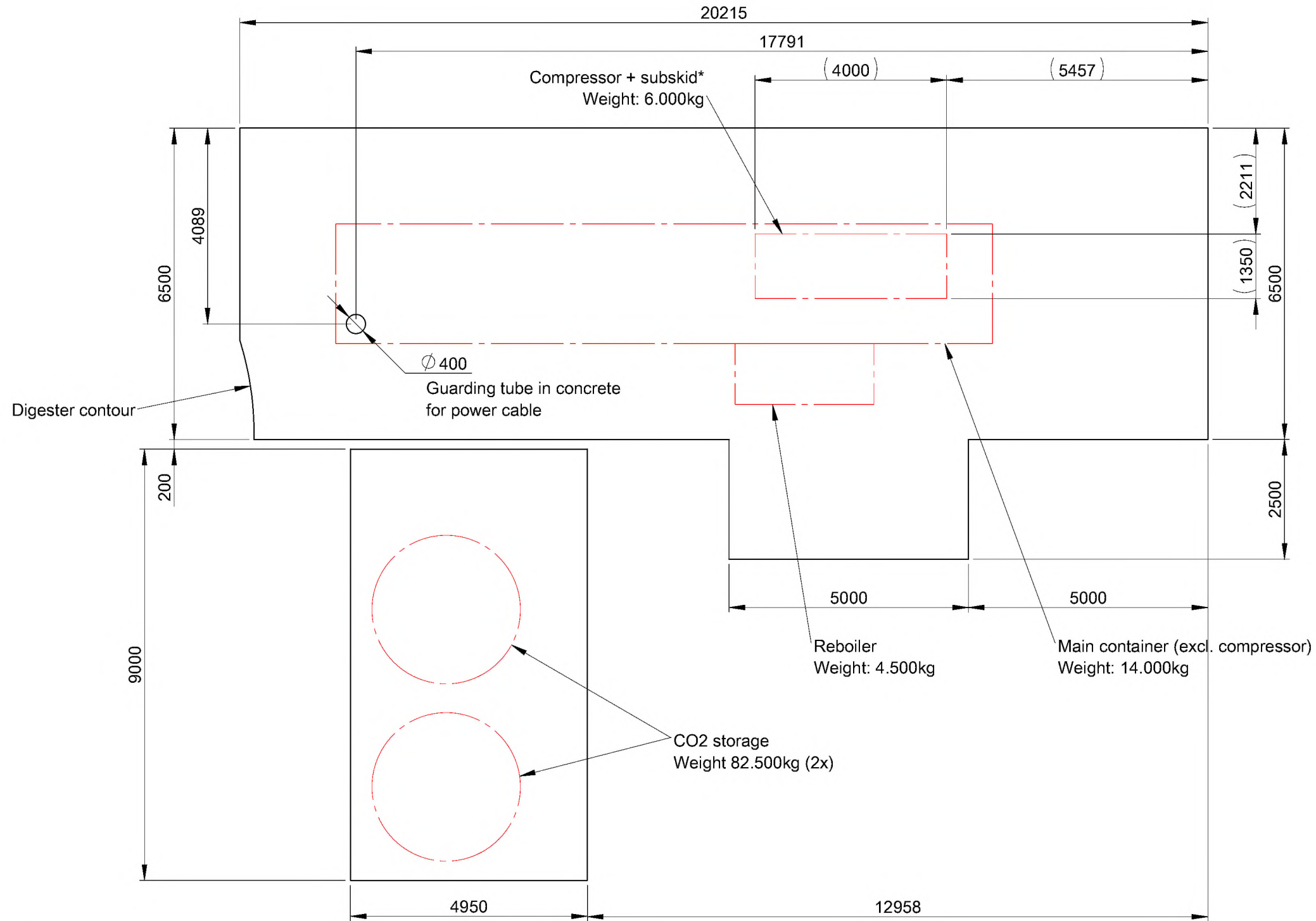
Scale 1:75	Size A3	Sheet 3 of 5
---------------	------------	-----------------



Title Layout CO2 liquefaction		
Drawing no. H4944-tek02-200	Rev. 02	Plot date 30-5-2023
Project name RVO HR-gas		



Scale 1:75	Size A3	Sheet 4 of 5
---------------	------------	-----------------



Notes:


General requirements:

No inclination of concrete floor allowed. Flat concrete floor surface required.  
 To prevent slip hazard it is recommend to apply transverse grooved concrete structure as a surface treatment,  
 This can be achieved by a rake.  
 Typical depth of the grooves is 2 - 3 mm.

Flatness according NEN-2747:2001 class 5 or higher.

\*Compressor requirements:

Flatness according NEN-2747:2001 class 1.  
 Concrete thickness minimum 250mm.  
 Uncracked concrete with a minimum compressive resistance of 30 N/mm<sup>2</sup>.  
 Floor under concrete with a minimum compressive resistance of 2 kg/cm<sup>2</sup>.

Title Layout CO2 liquefaction				
Drawing no. H4944-tek02-200	Rev. 02	Plot date 30-5-2023		
Project name RVO HR-gas	Scale 1:100	Size A3	Sheet 5 of 5	