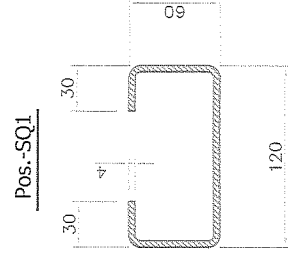
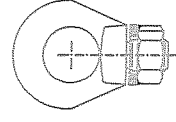
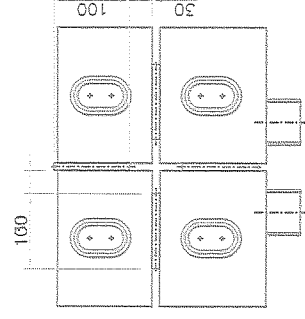
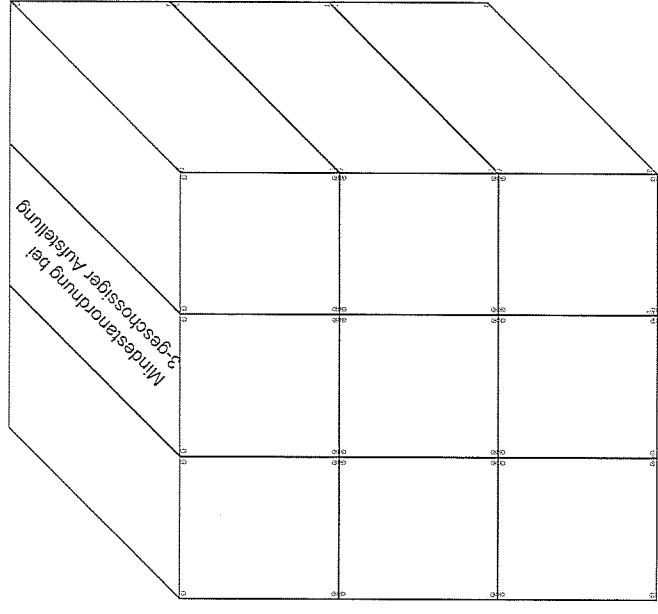


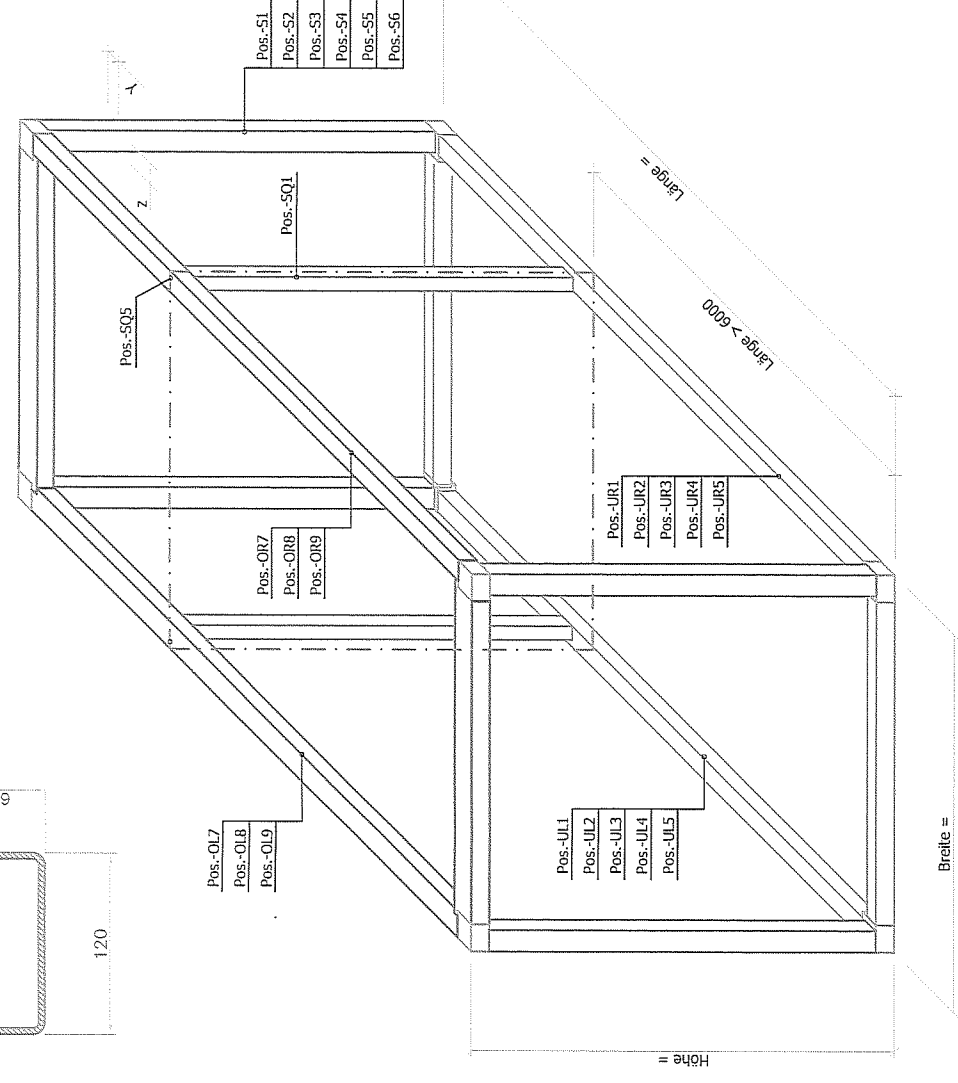
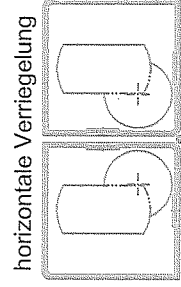
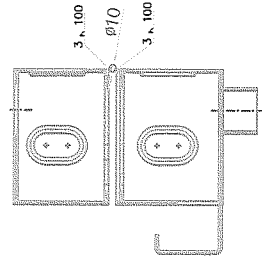
Pos.-SQL



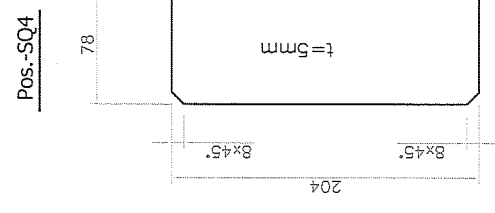
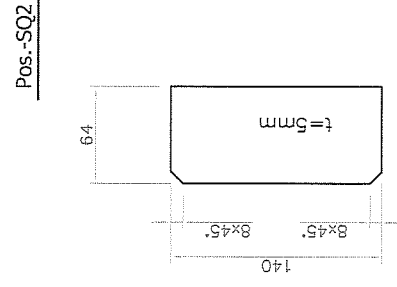
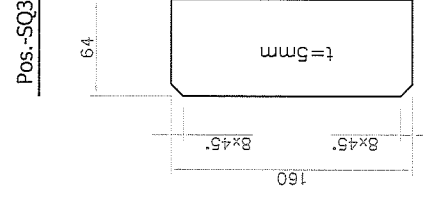
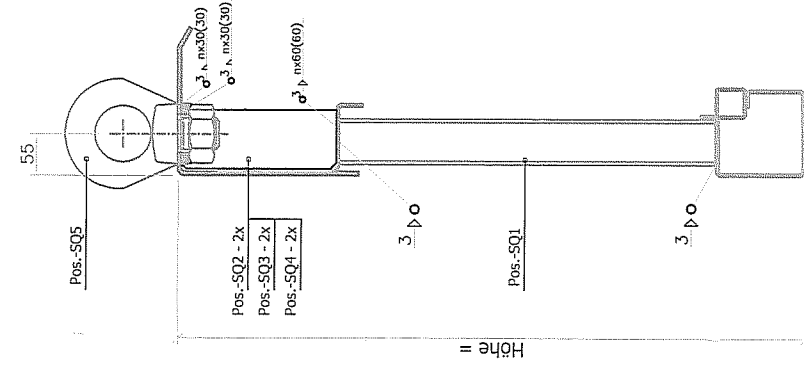
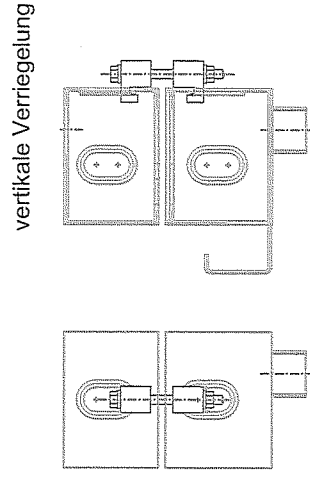
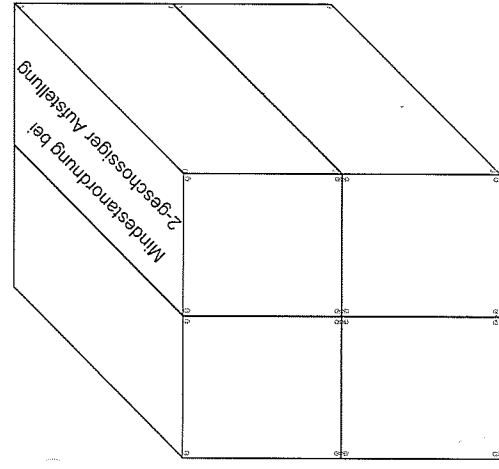
Ausführung - Schweißverbindung



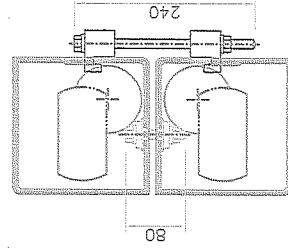
vertikale Verriegelung



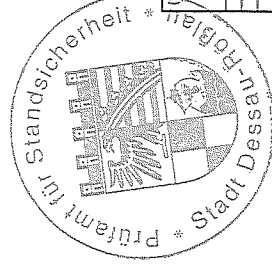
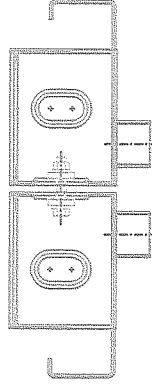
Ausführung Standardkopplungen



horizontale Verriegelung

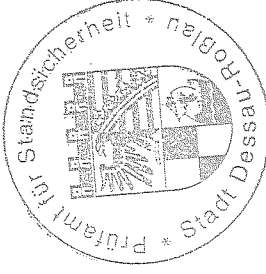
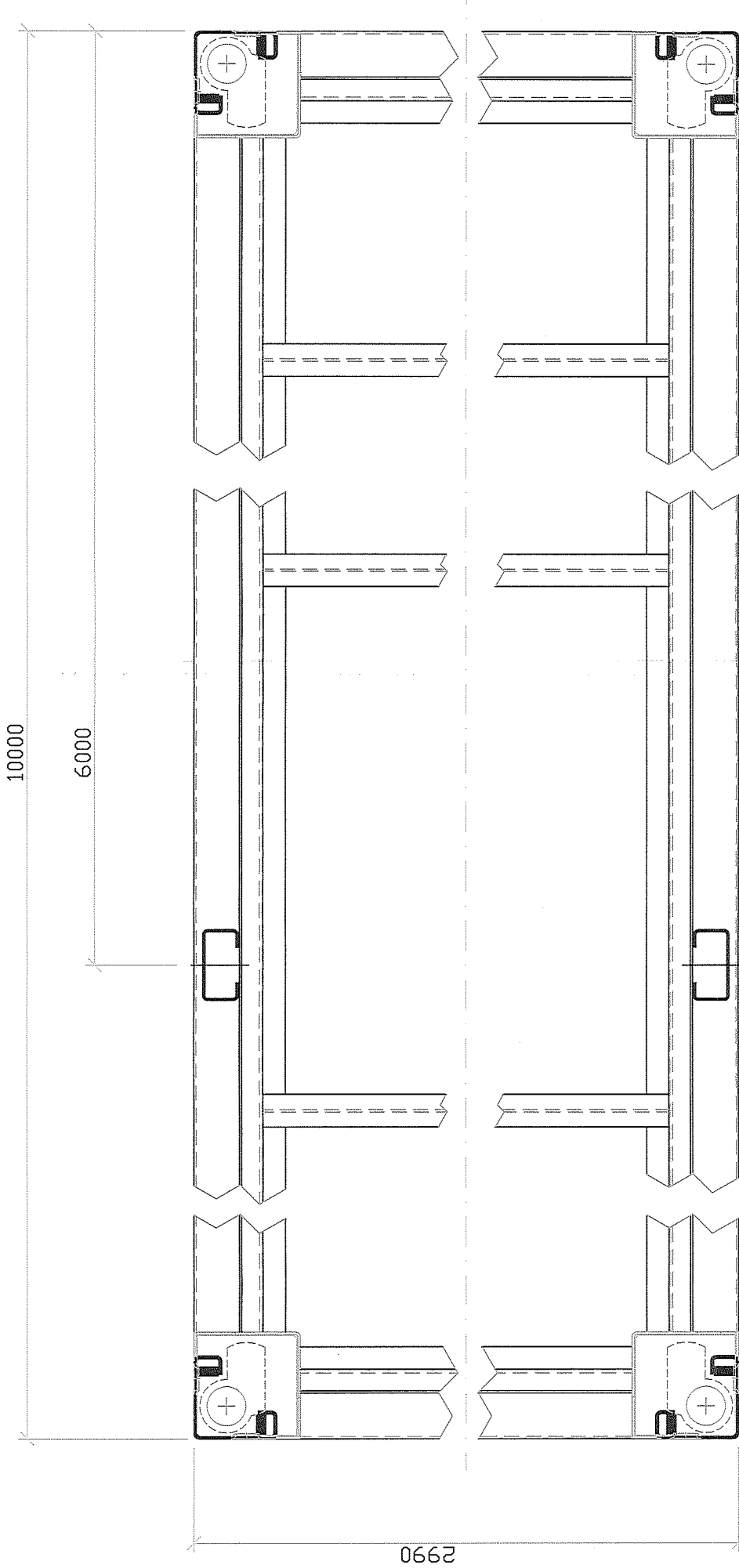


vertikale Verriegelung

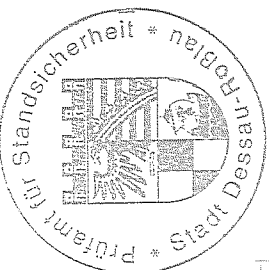
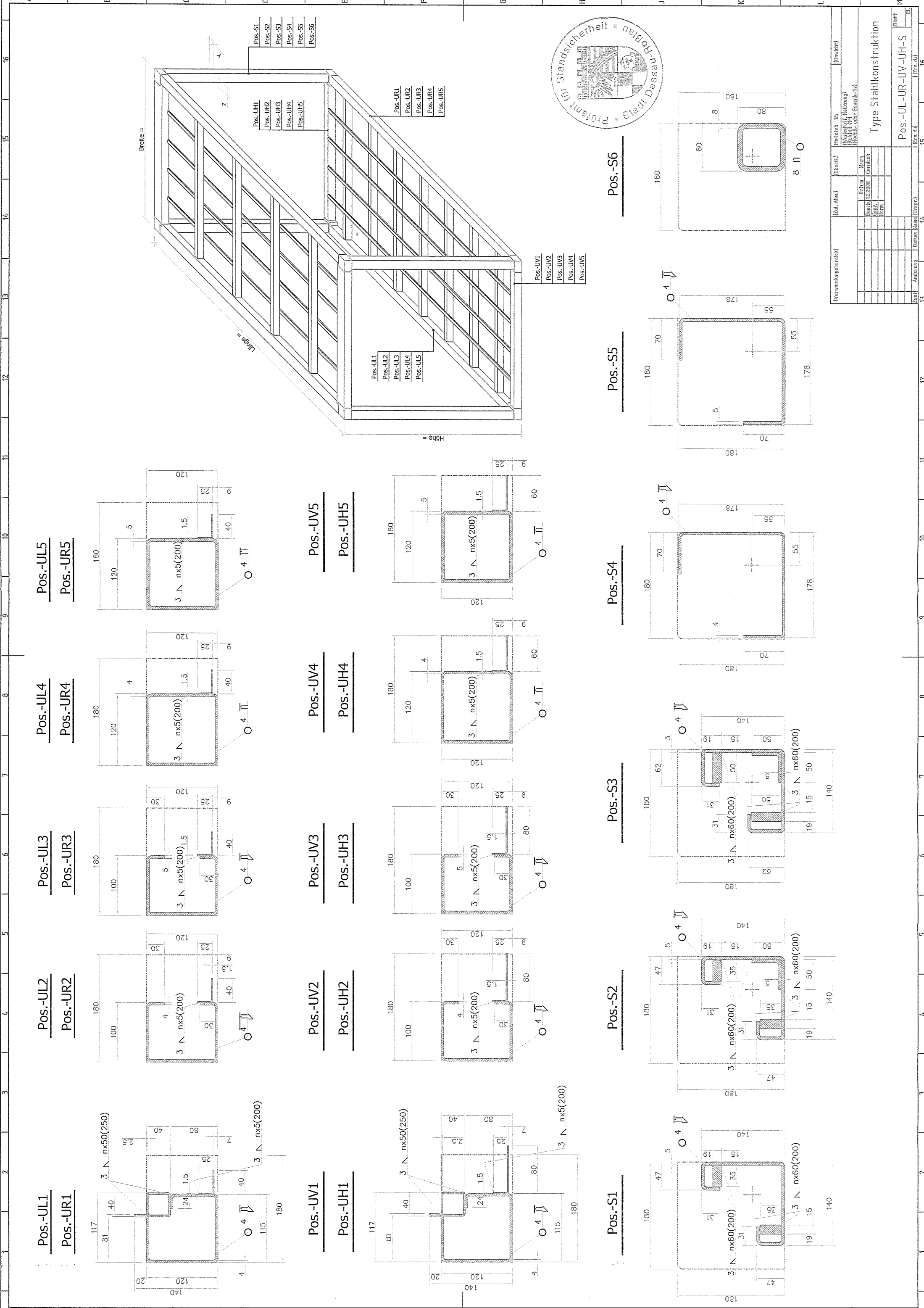


	(Verwendungszweck)	(Zahl. Abw.)	(Quartl.)	Hinweis 15 (Werkstoff, Halbzweig) (Hotel- / Nr) Produkt - oder Geograph-Nr)	(Einfachst)
		Datum	Name		
		Durch.	Cernick		
		Spr.	form		
Zustf. Änderung	Datum	Basis	(Usp.)	Ers. f.d.	(Erg. d.)
				Schnitt -Raum	d.

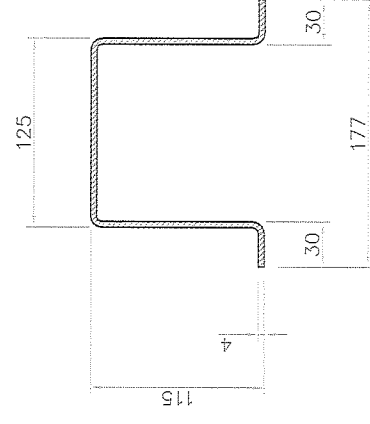
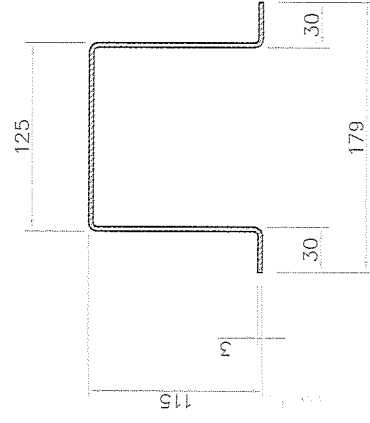
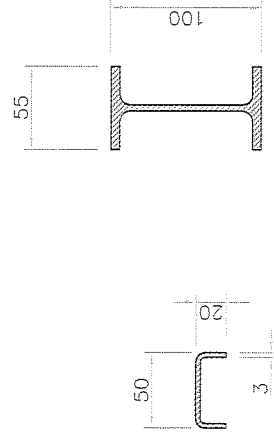
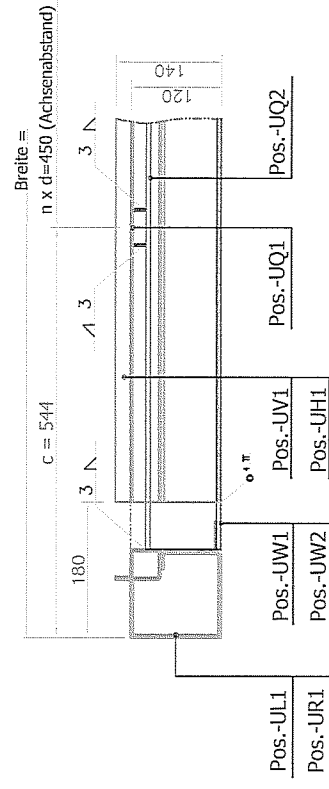
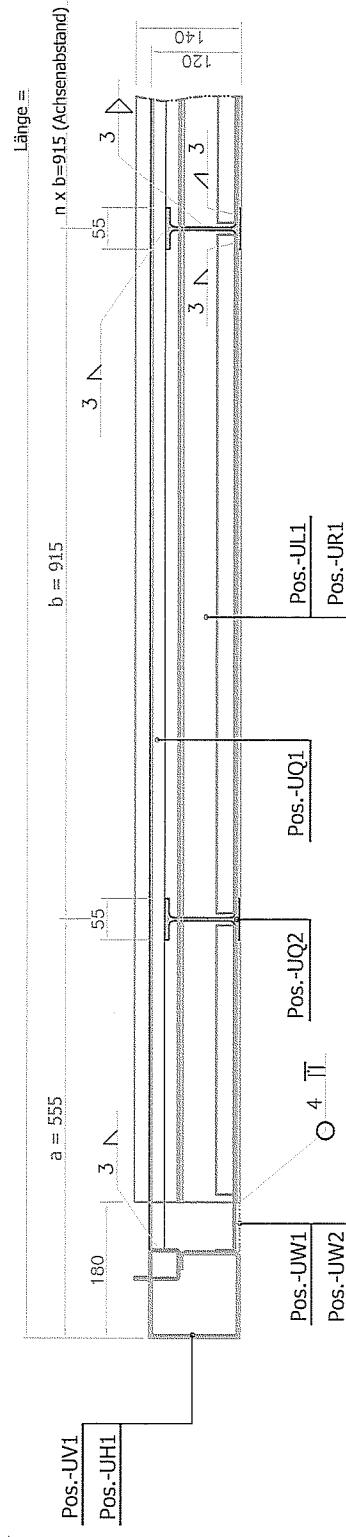
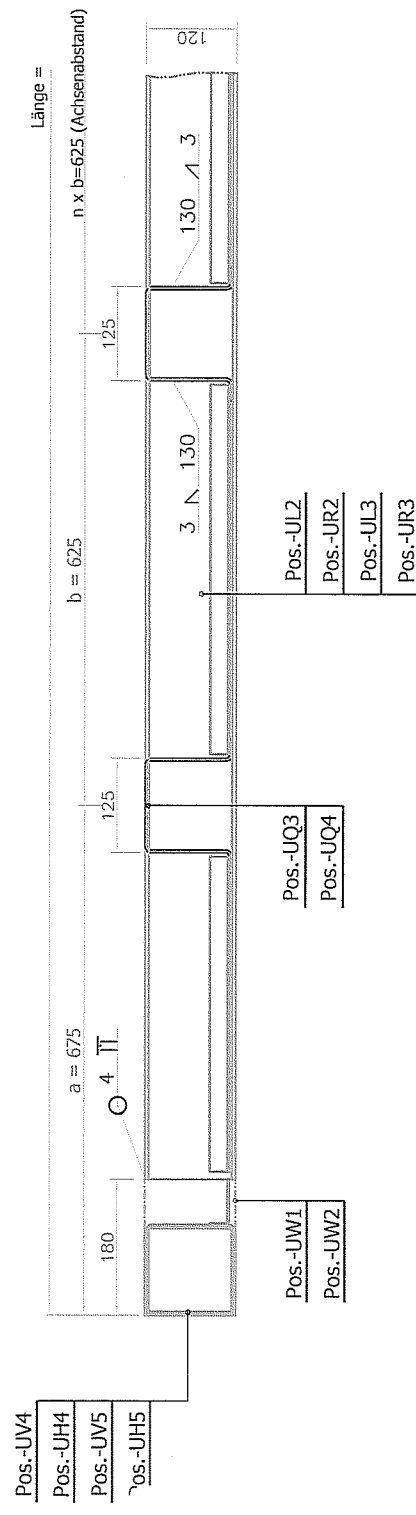
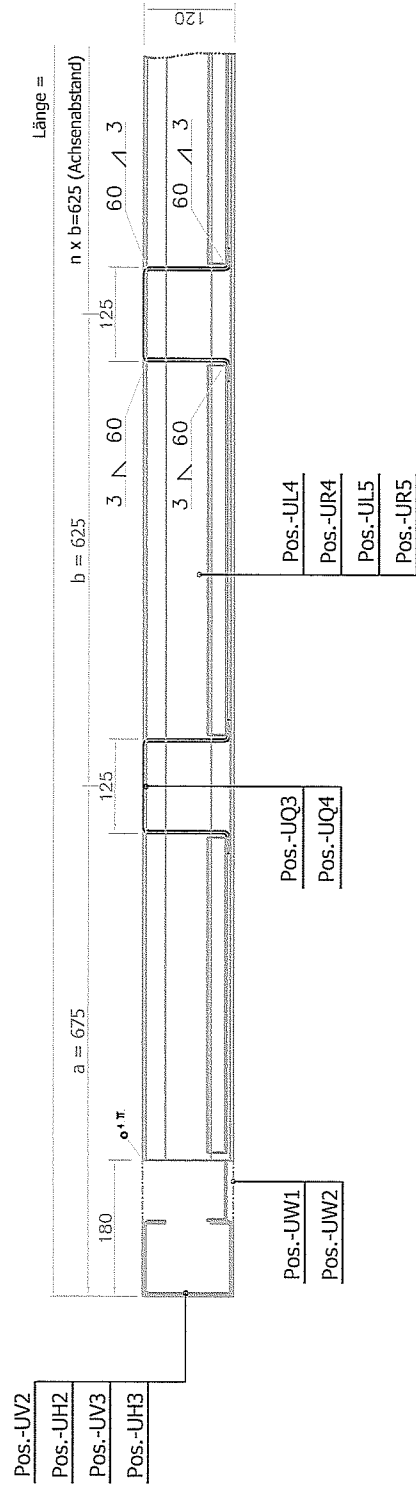
Horizontalschnitt 10m Container



	(Zut. Abw.)	(Oberfl.)	Maisfab MABSTAB [werkstoff: Halbleitung] [kontrolliert-ja] [Produkt - oder Gesamtk-Nr]	[Gewicht]
	Datum	Name		
	Bearb.	16.11.2009	Jkl	
	Gespr.			
	Norm			
	Datum	Name	[Fres. f.]	[Fres. d.]



Verwendungsbereich		Zul. Abw.		Übereinst.		Heißeabw. 15		[Gezeichnet]	
						Verfahren: Halbzeug			
						Profil: 60x 60x 60x 60x			

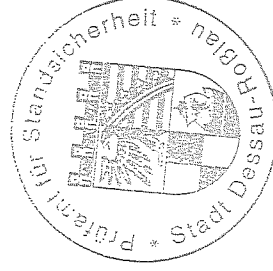
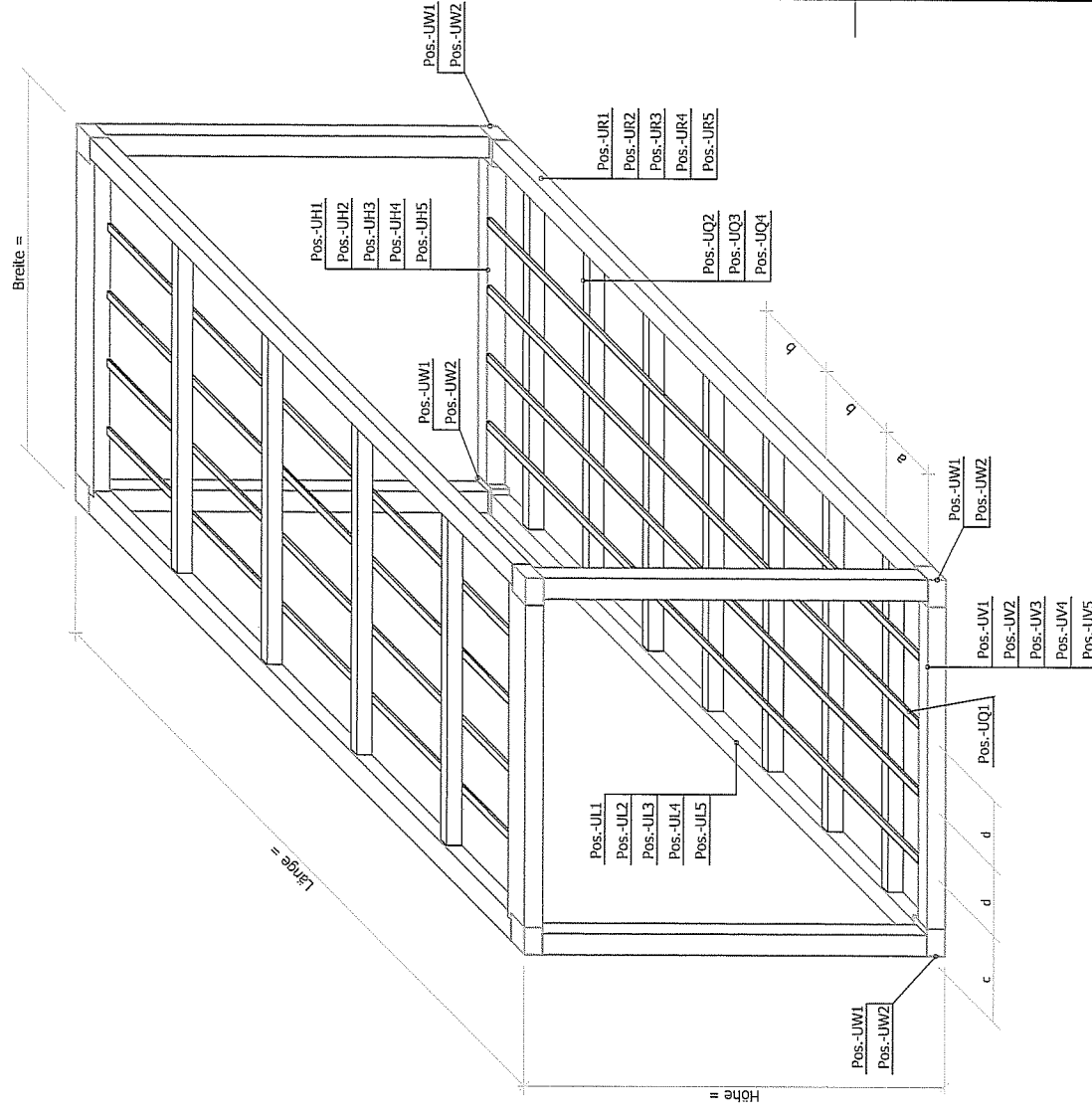


Pos.-UQ1

Pos.-UQ2

Pos.-UQ3

Pos.-UQ4

[illegible]

Pos.-OV1

Pos.-OH1

Pos.-OV2

Pos.-OH2

Pos.-OV3

Pos.-OH3

Pos.-OV4

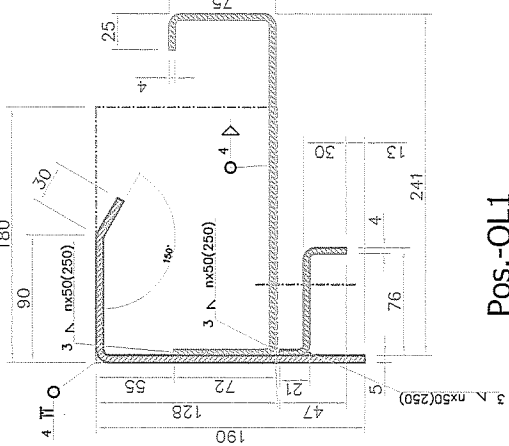
Pos.-OH4

Pos.-OV5

Pos.-OH5

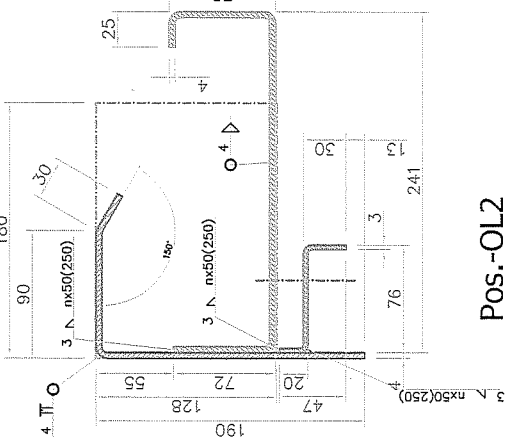
Pos.-OV6

Pos.-OH6



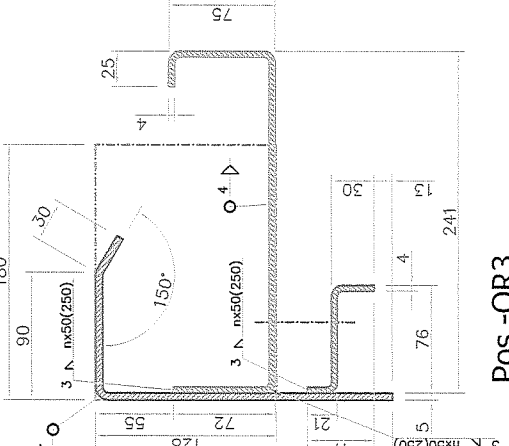
Pos.-OL1

Pos.-OR1



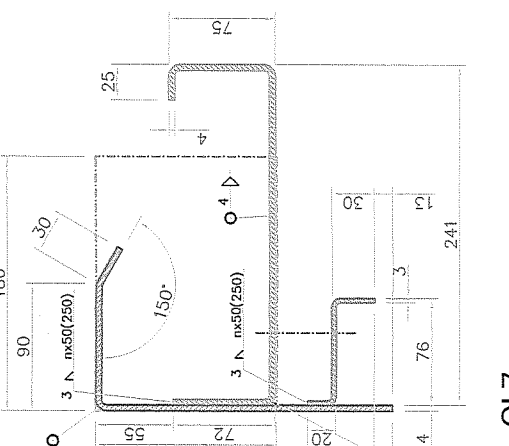
Pos.-OL2

Pos.-OR2



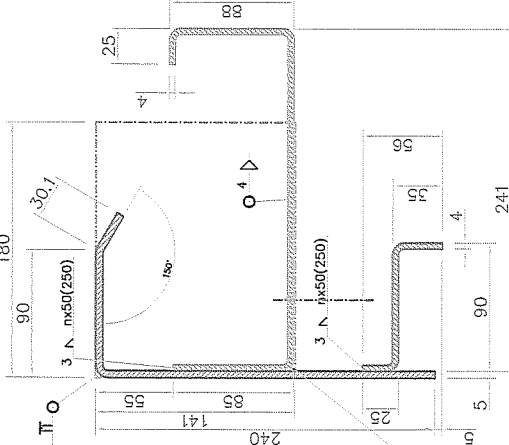
Pos.-OR3

Pos.-OL3



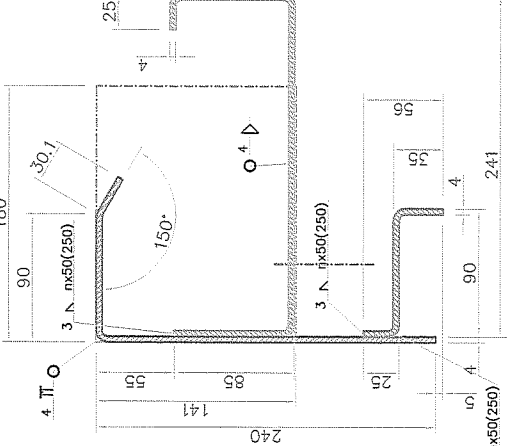
Pos.-OL7

Pos.-OR7



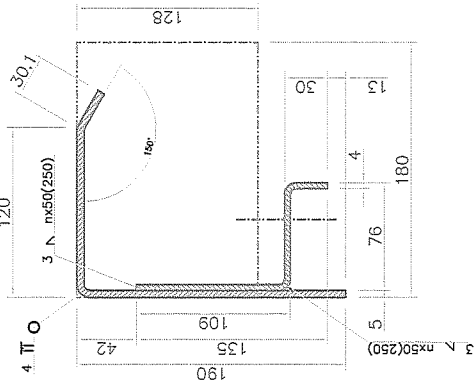
Pos.-OL8

Pos.-OR8



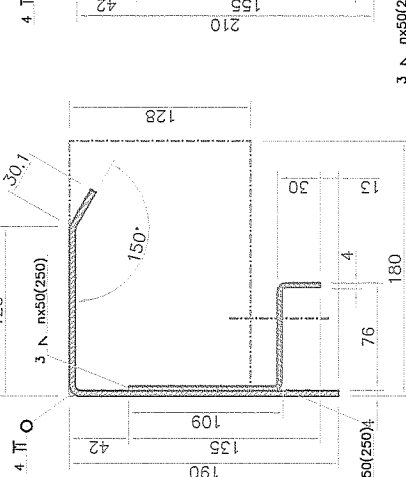
Pos.-OL4

Pos.-OR4



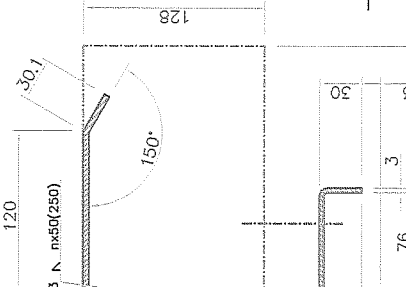
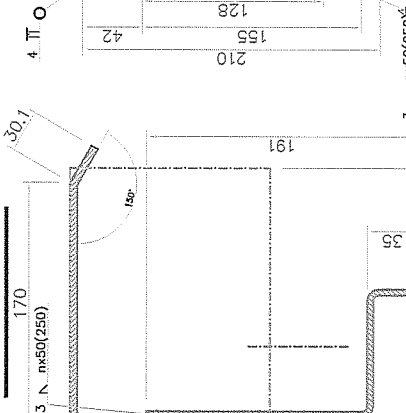
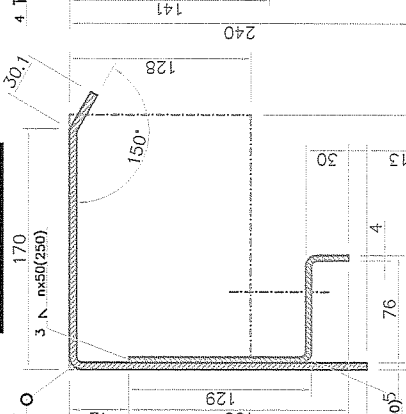
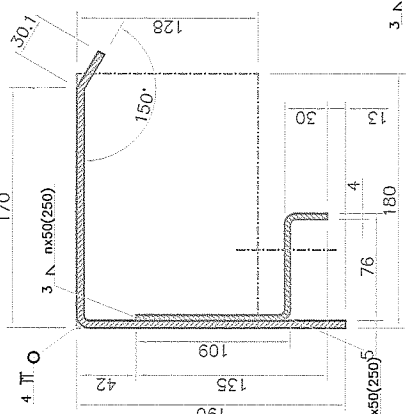
Pos.-OL5

Pos.-OR5



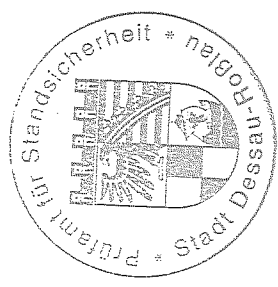
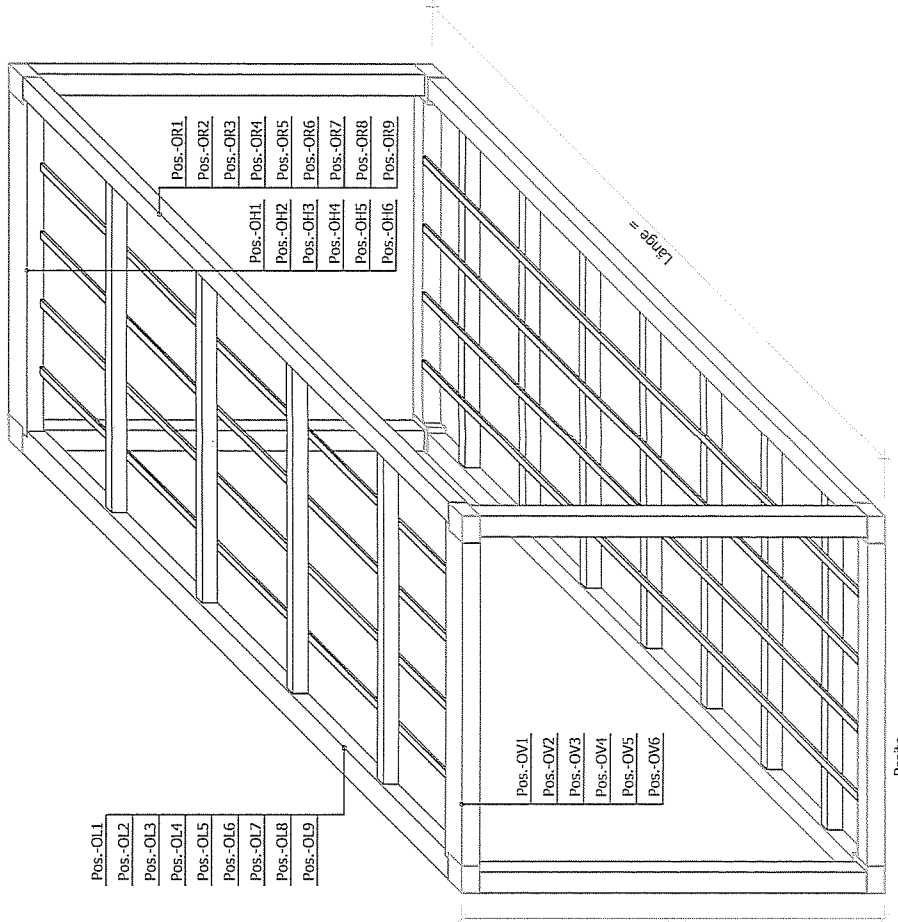
Pos.-OL6

Pos.-OR6

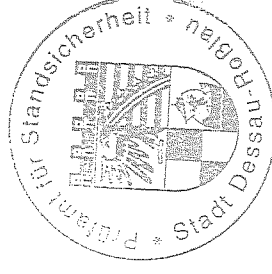
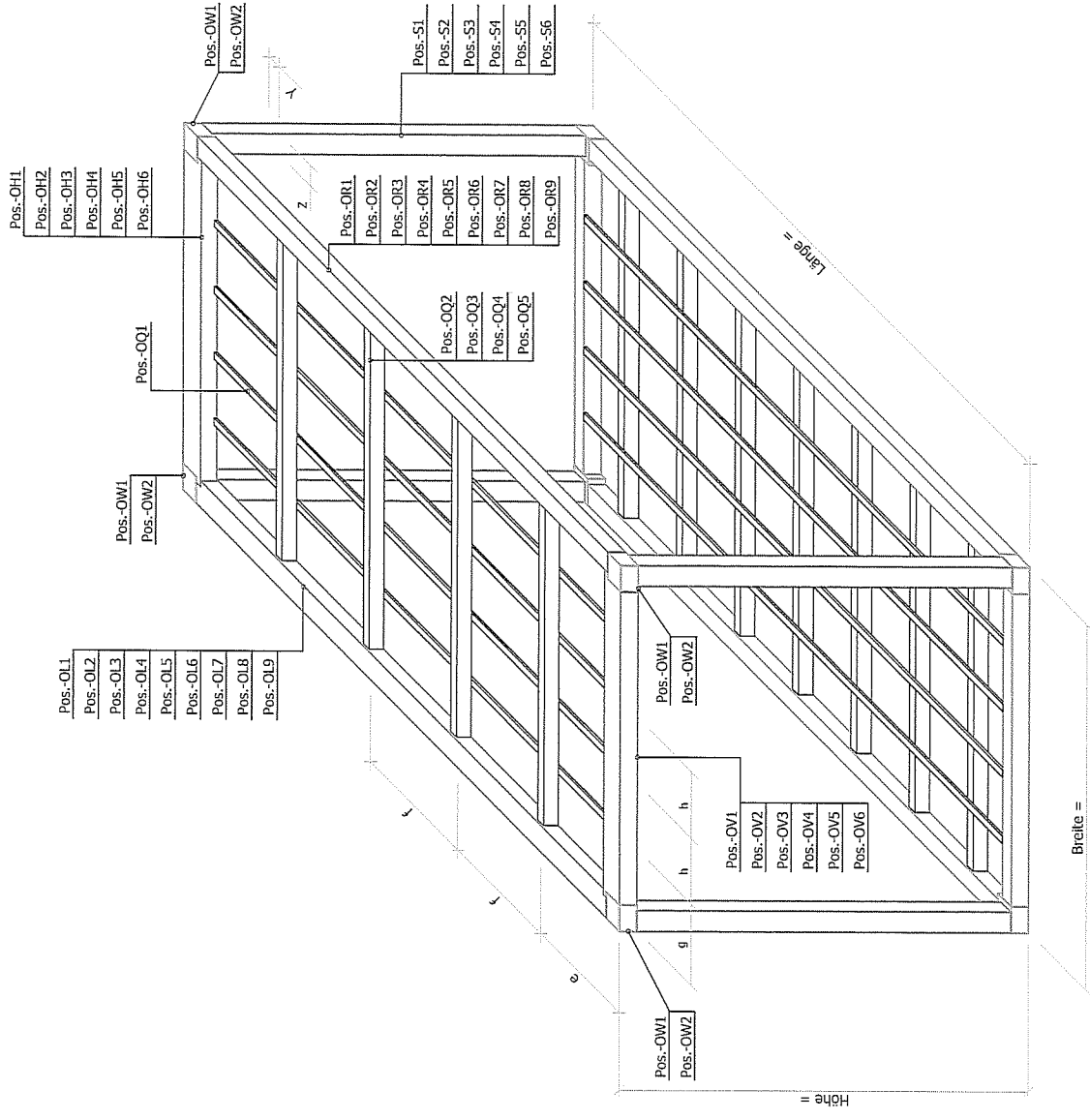
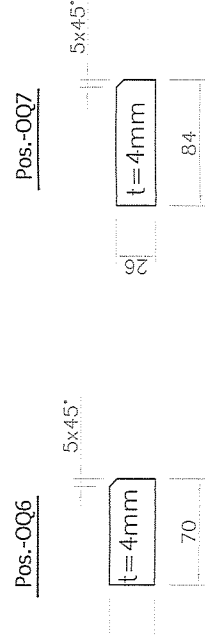
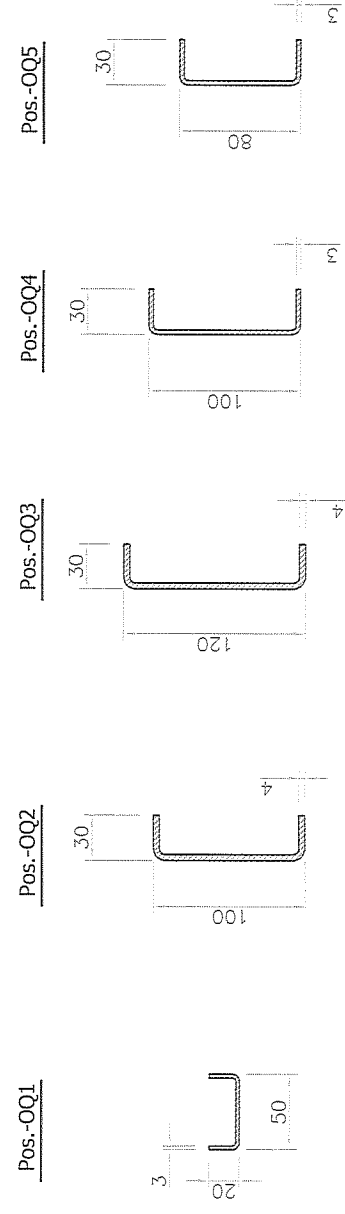
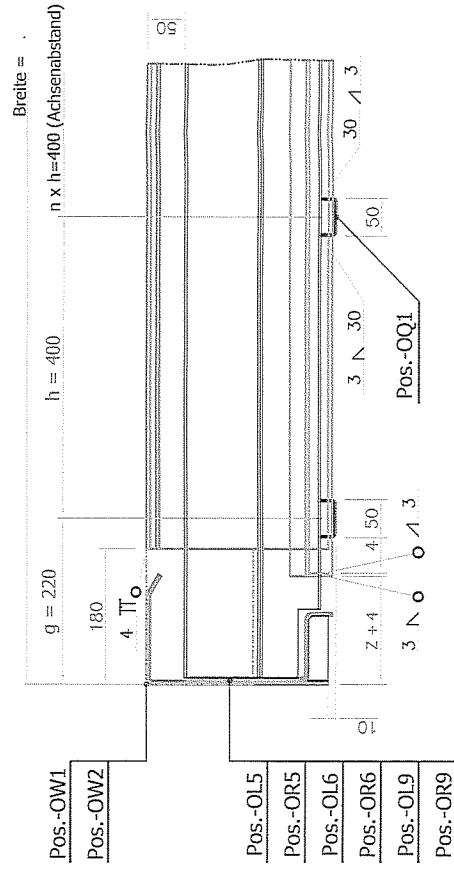
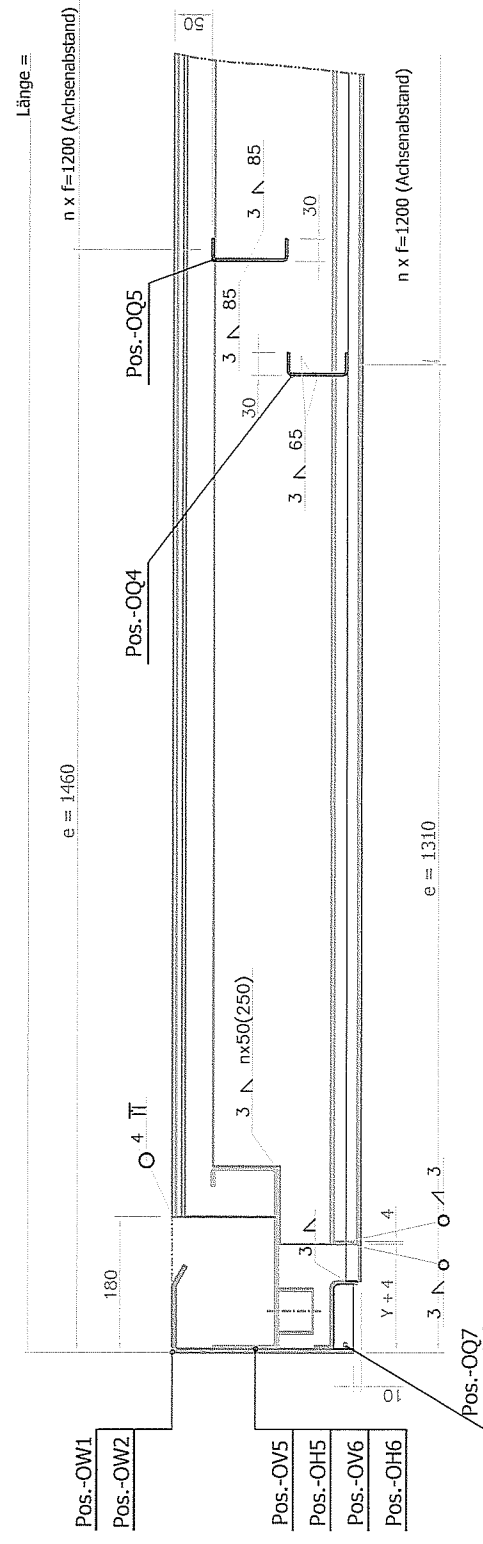
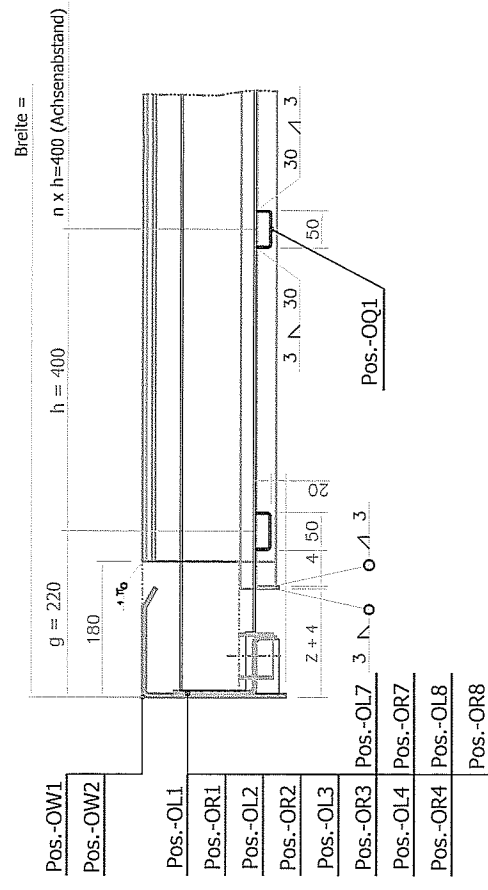
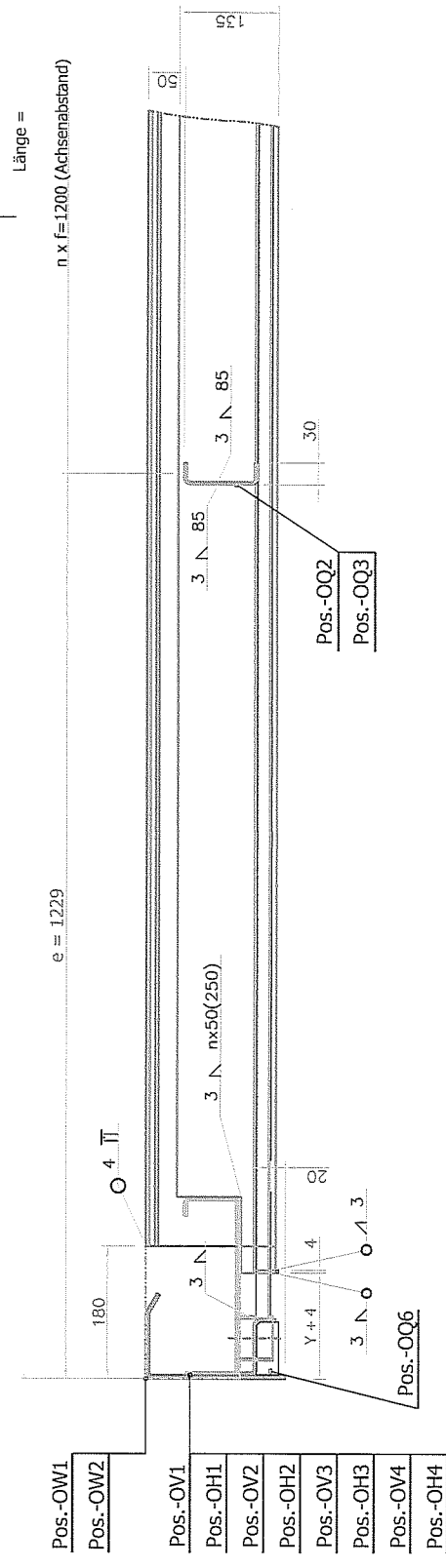


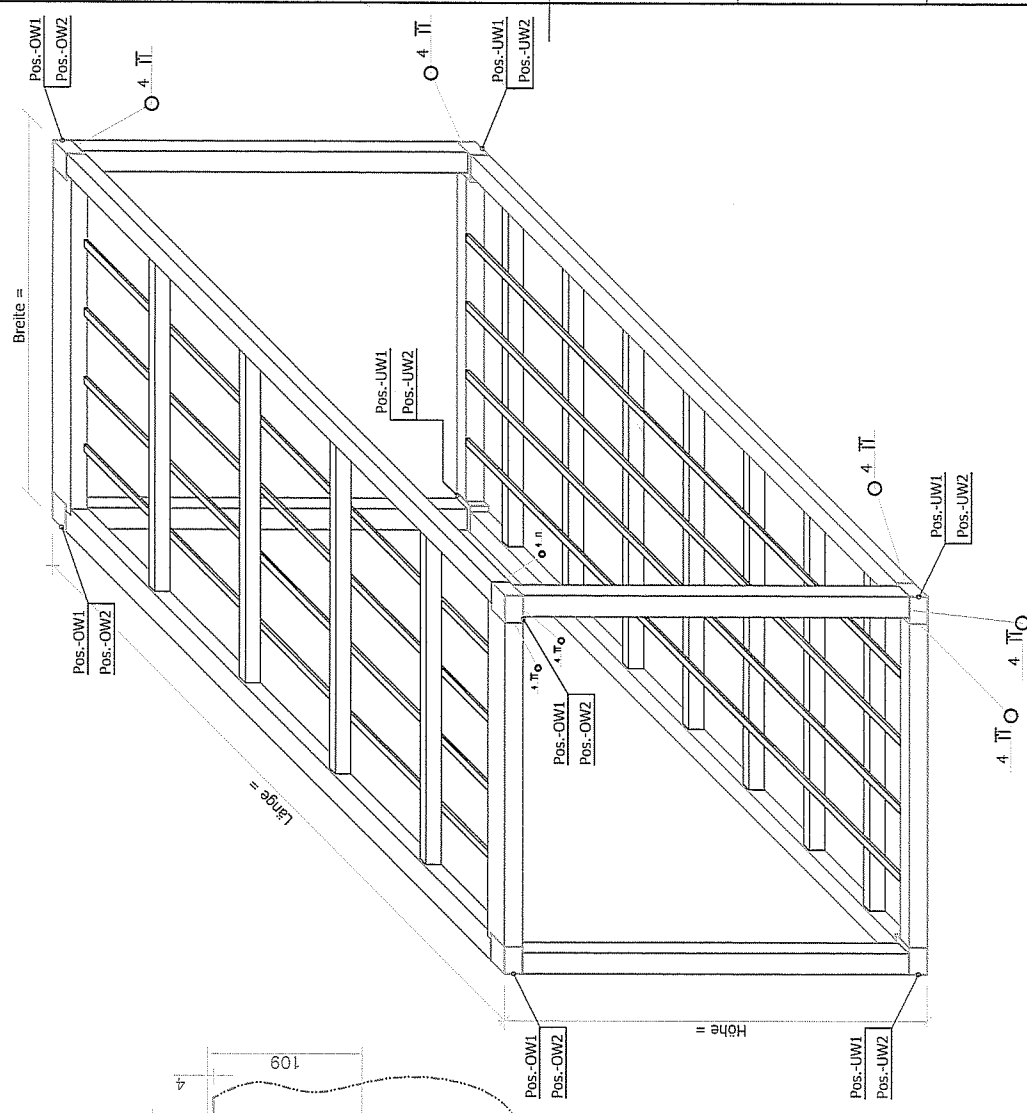
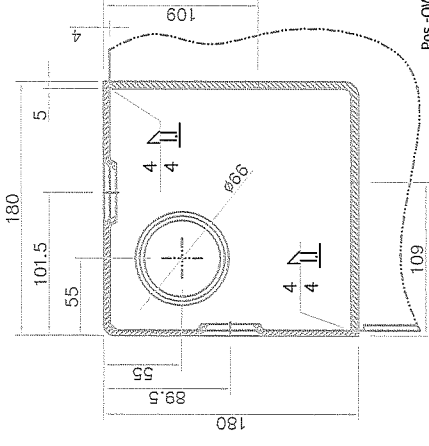
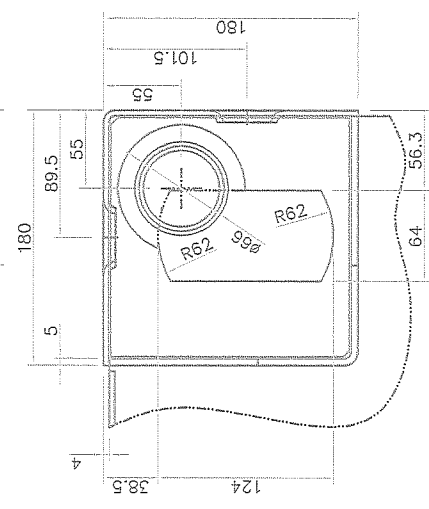
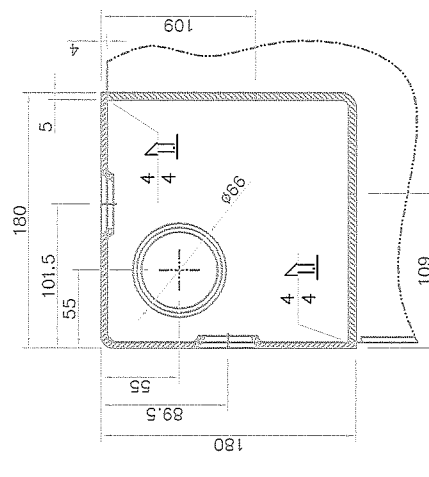
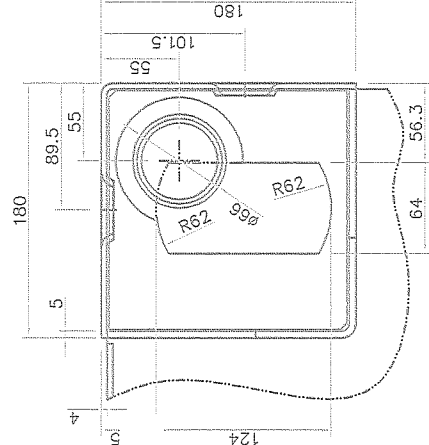
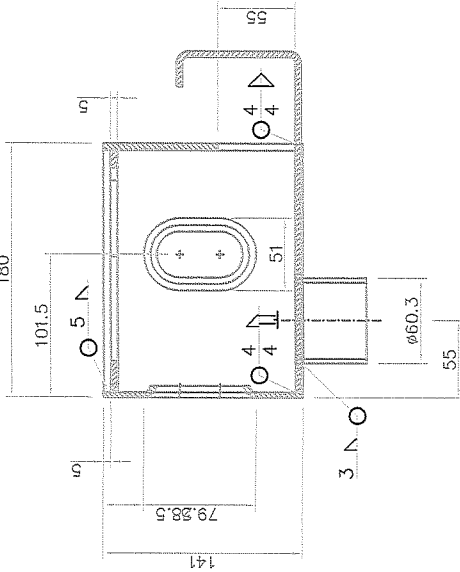
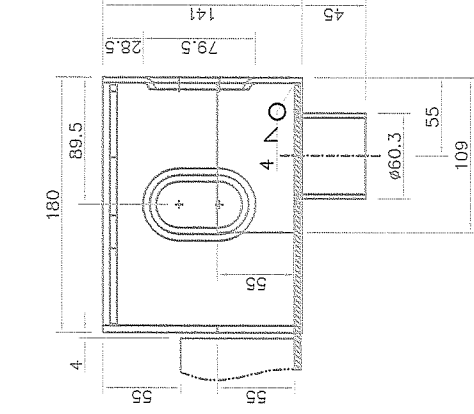
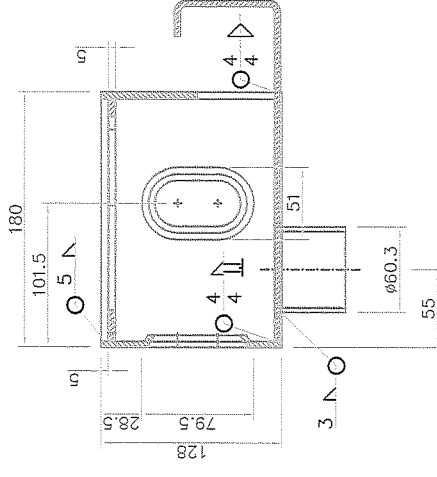
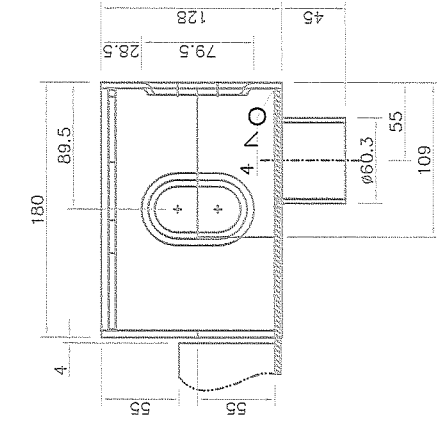
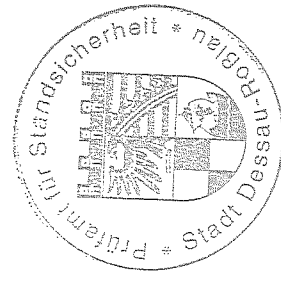
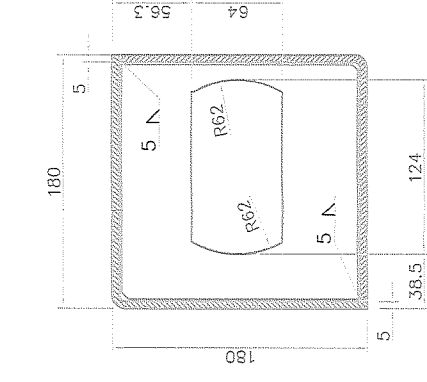
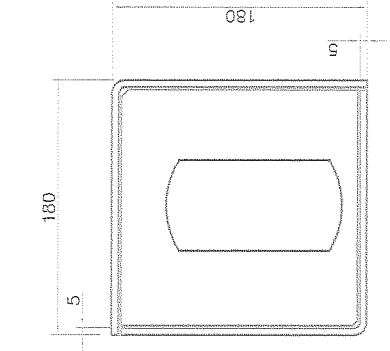
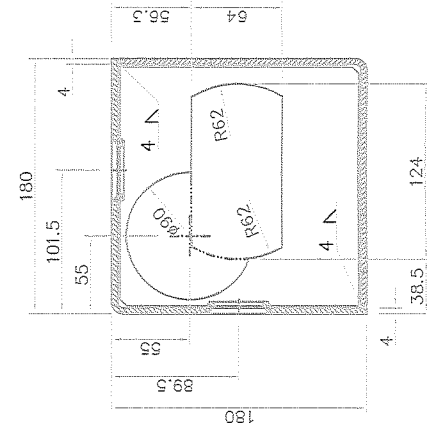
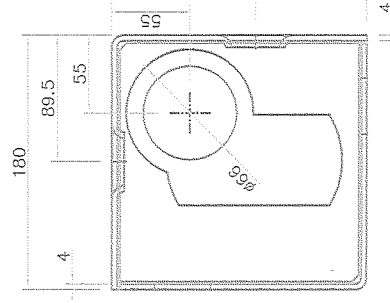
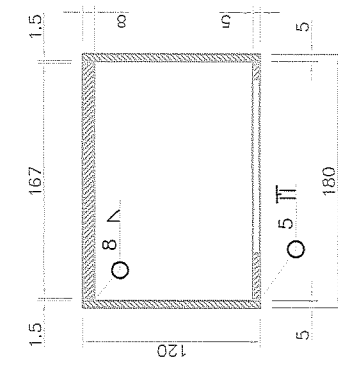
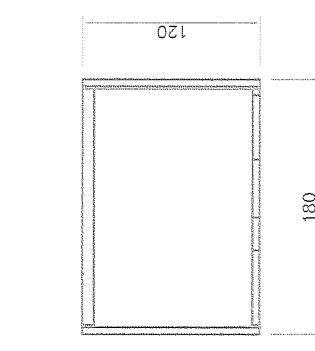
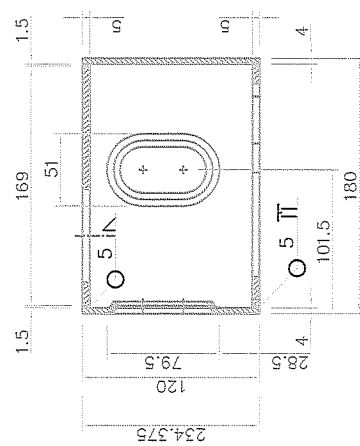
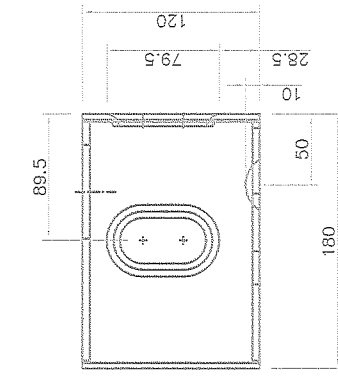
- Pos.-OL1
- Pos.-OL2
- Pos.-OL3
- Pos.-OL4
- Pos.-OL5
- Pos.-OL6
- Pos.-OL7
- Pos.-OL8
- Pos.-OL9

- Pos.-OR1
- Pos.-OR2
- Pos.-OR3
- Pos.-OR4
- Pos.-OR5
- Pos.-OR6
- Pos.-OR7
- Pos.-OR8
- Pos.-OR9



(Verwendungsart)		(Zul. Abw.)	(Oberfl.)	Halterab 15		(Einheit)
				Verfahren (Halterab)		
				Material- oder Gesenk-Id		
				Type Stahlkonstruktion		
				Pos.-OV-OH-OL-OR		
				Blatt		
				Pos.-OV-OH-OL-OR		
				Blatt		

[illegible]

Pos.-OW1Pos.-OW2[illegible]