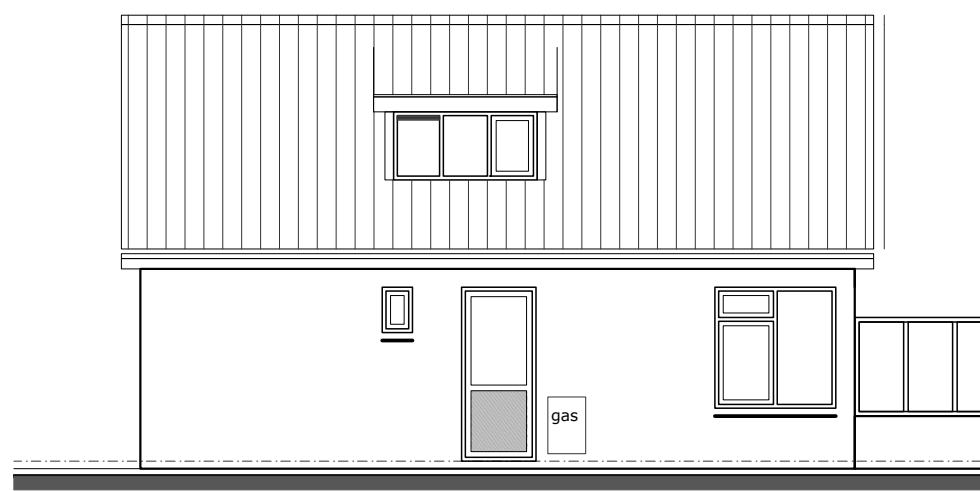
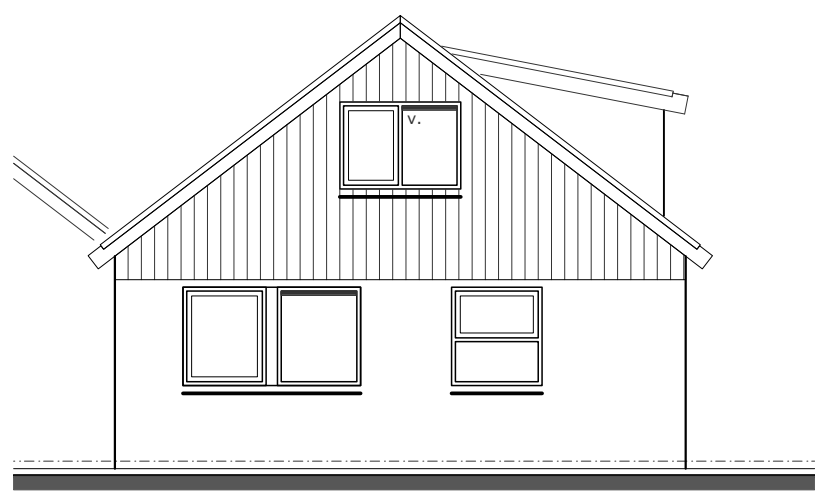




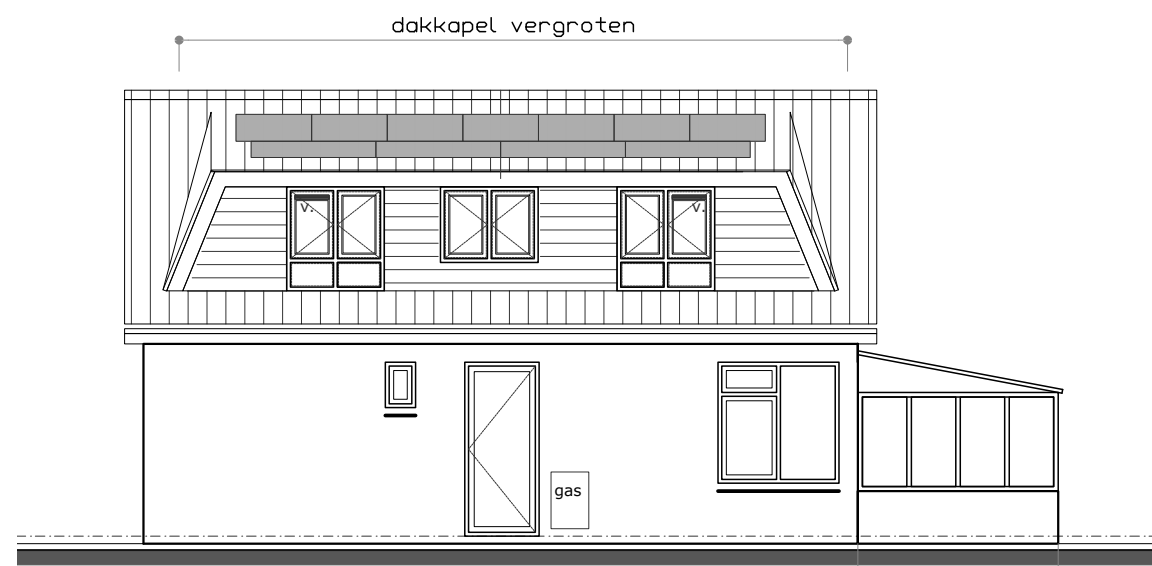
voorgevel



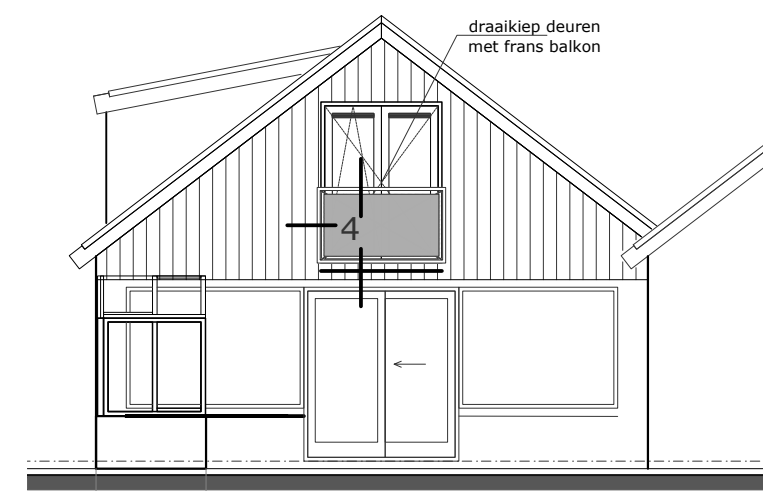
rechter zijgevel



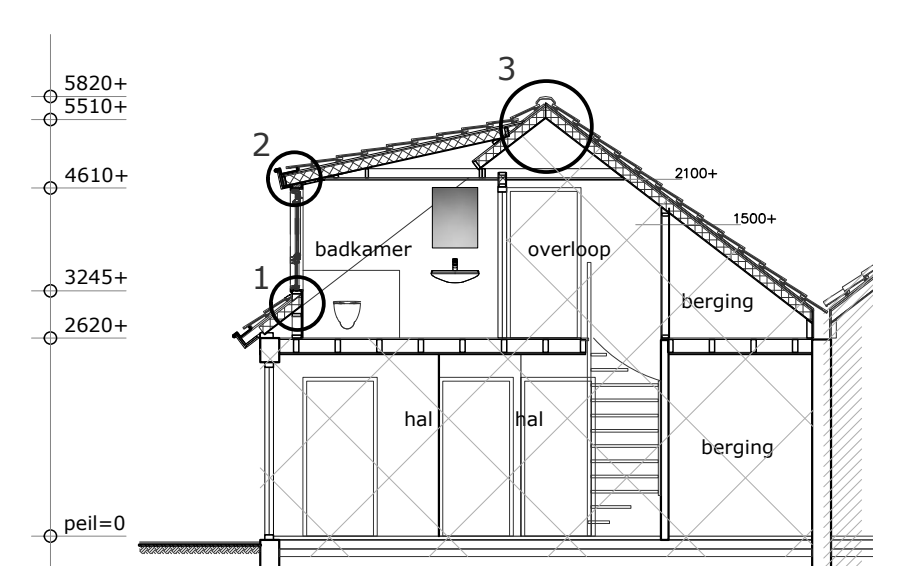
voorgevel



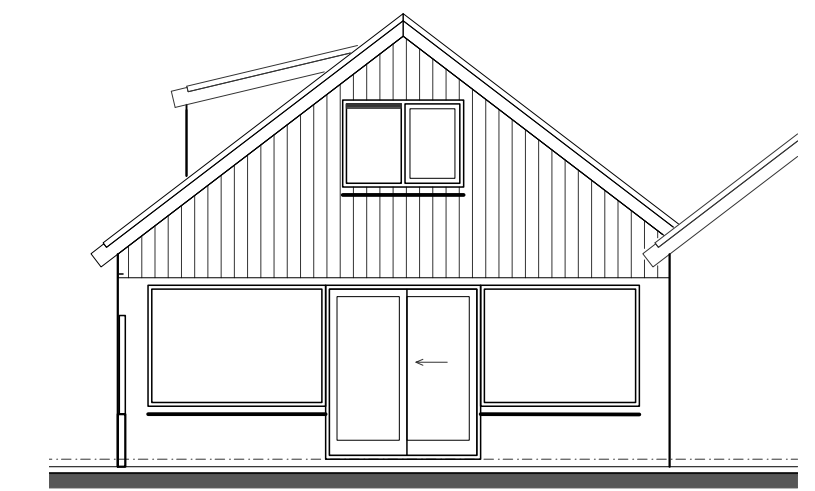
rechter zijgevel



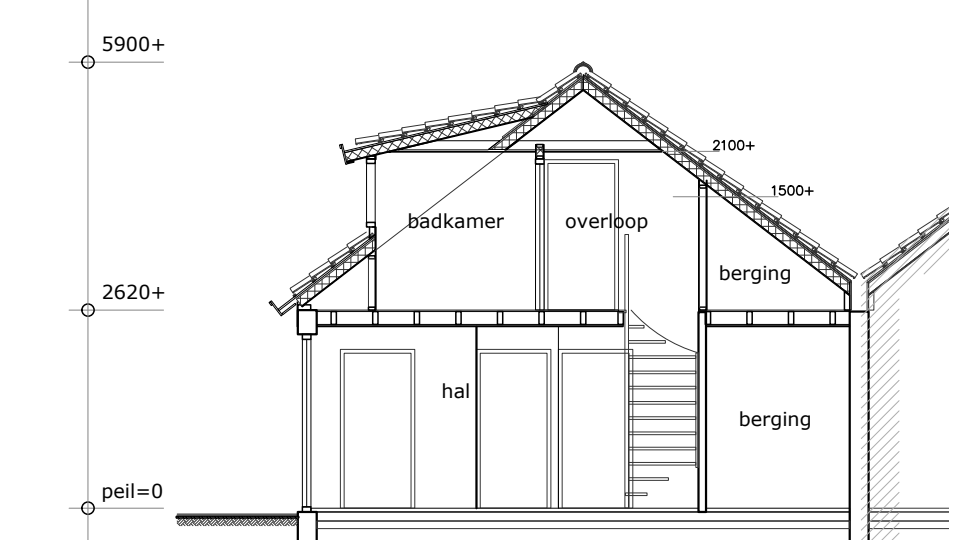
achtergevel



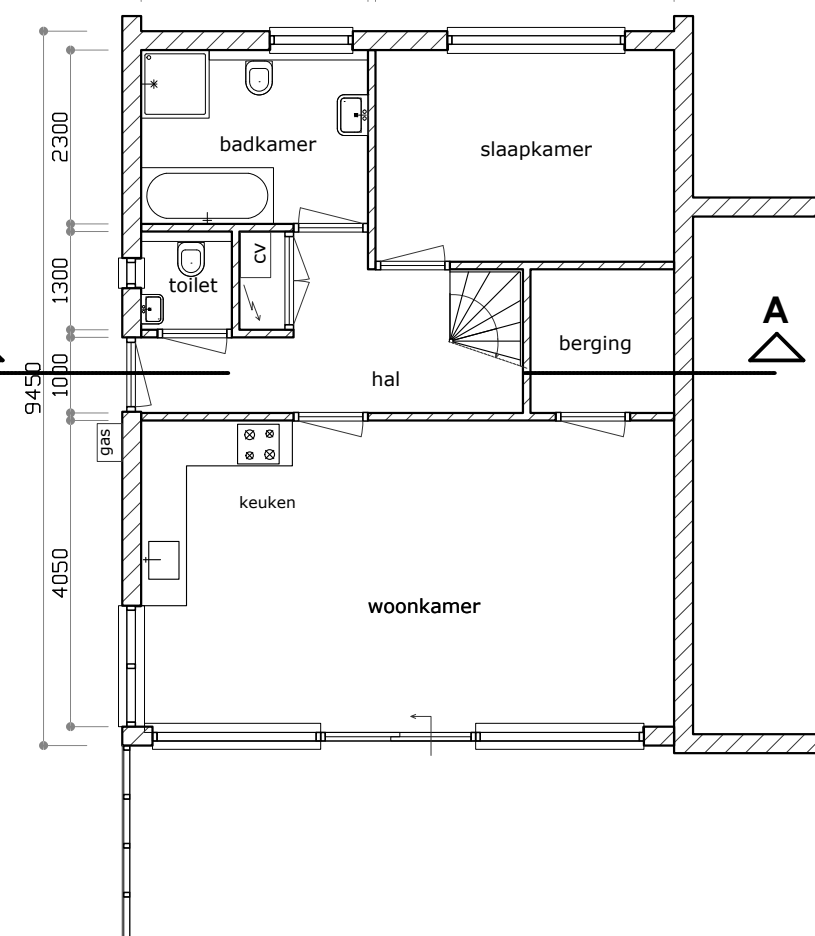
Doorsnede A-A



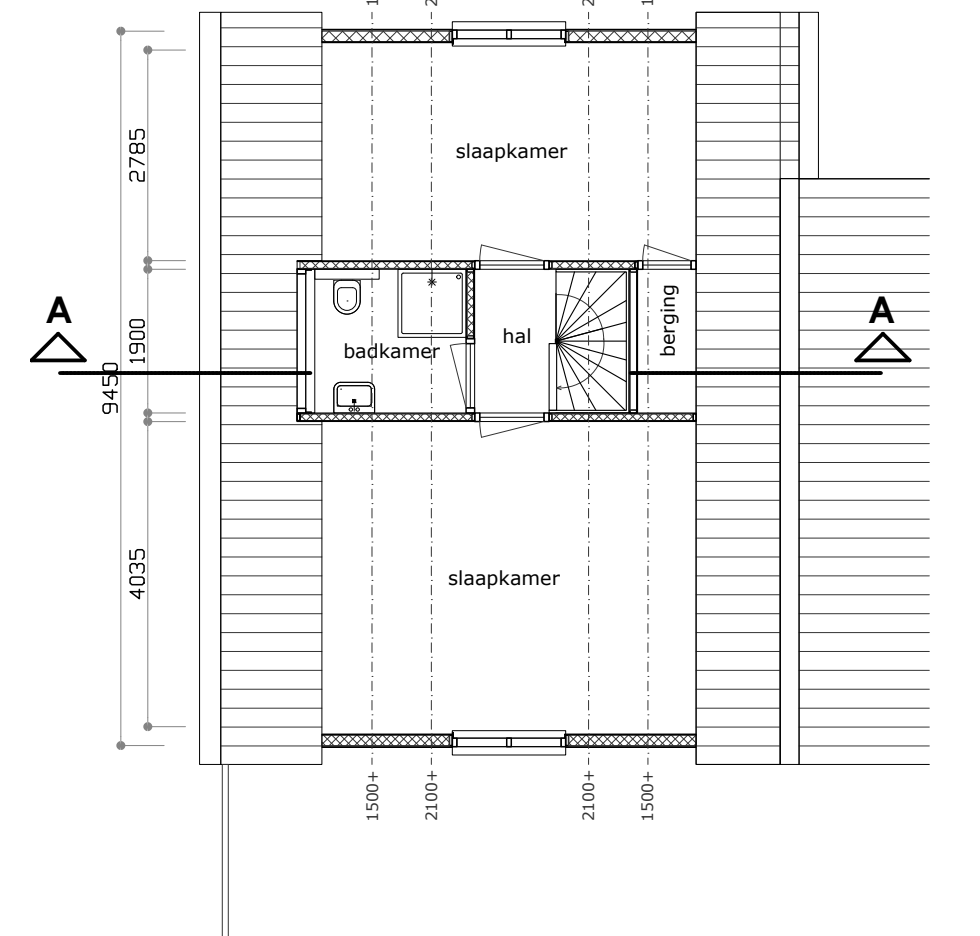
achtergevel



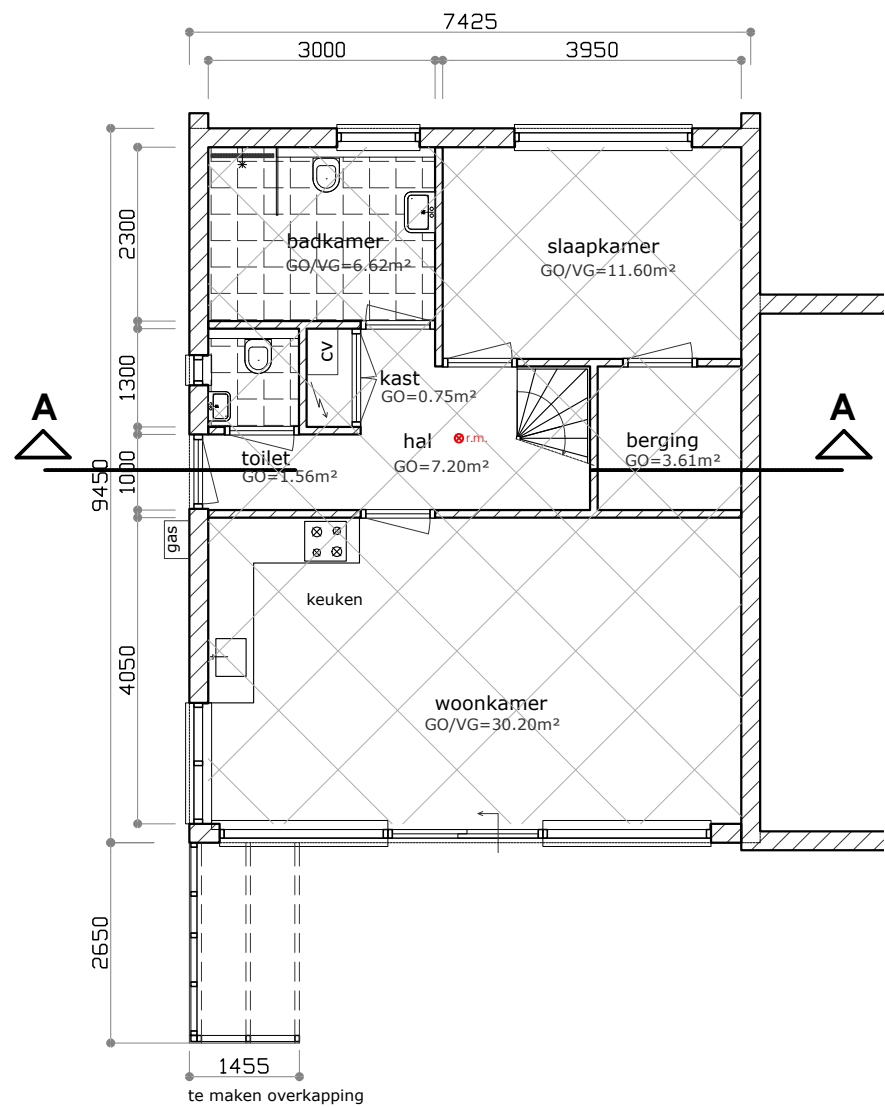
Doorsnede A-A



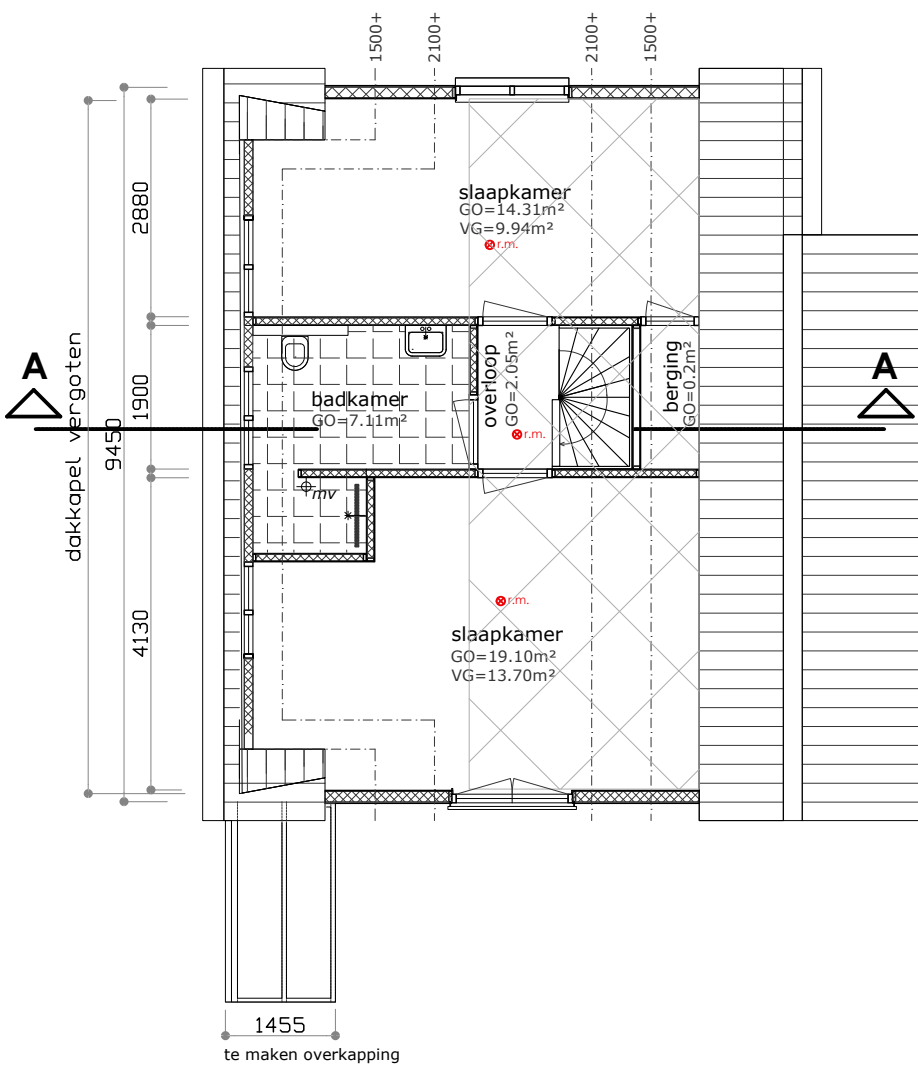
plattegrond



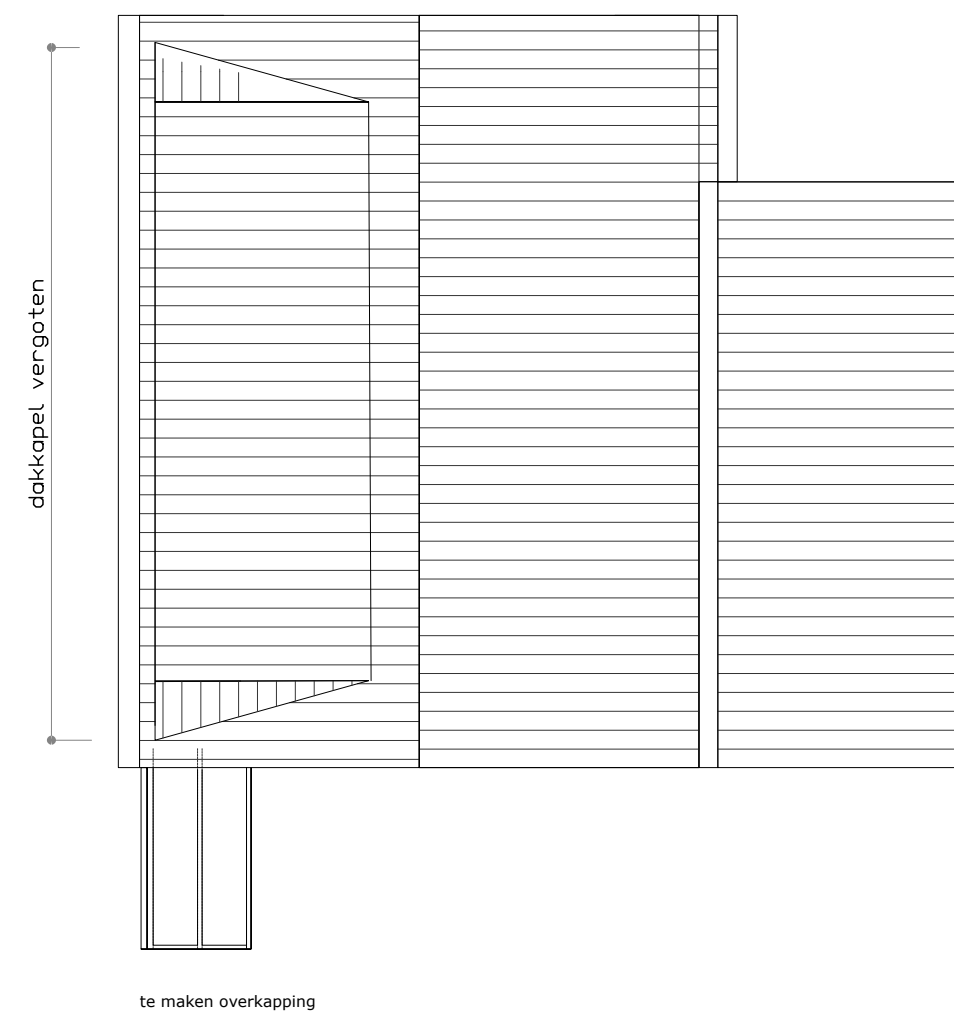
verdieping



plattegrond



verdieping



dak

kleuren en materialen

onderdeel	materiaal	kleur
geveldelen	Keralit sidings	groen
kozijnen	kunststof	wit
ramen en deuren	vlakke dakpannen	antraciet
dakbedekking	kunststof / zink	wit / naturel
dakgoten		

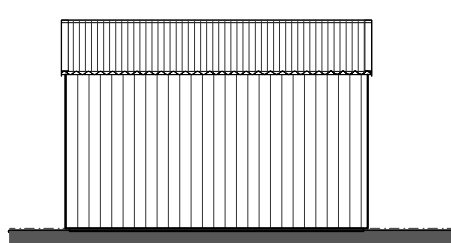
bebouwd oppervlak 75,35m²
inhoud 340m³

GO/VG - berekening

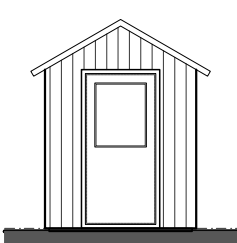
	gebruiksoppervlak	verblijfsruimte
begane grond	61,54 m²	41,80 m²
verdieping	37,37 m²	23,64 m²
TOTAAL	98,91 m²	65,44 m²

bestaande situatie

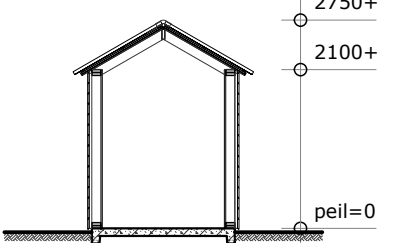
gewijzigde situatie



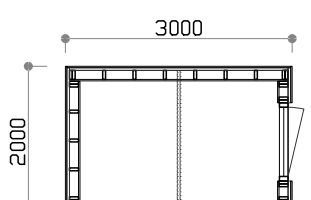
zijaanzicht



vooraanzicht



doorsnede



plattegrond

- vloeropbouw:
 - * betonvloer dik 100mm., met vorstrand
 - * wapening Ø8-#150
- wandopbouw:
 - * stijl en regelwerk 38x89mm., hoh. 600mm.
 - * regels 22x35mm.
- * keralit sidings
- dakopbouw:
 - * underlayment dik 19mm.
 - * dakpanplaat op panlatten

Gemeente Texel .txl

Behoort bij besluit van burgemeester en wethouders van Texel, zaaknummer: 3206304 kenmerk document: Bijlage 1/3 namens de burgemeester en wethouders van Texel, de heer F. Galarce Morales, teamleider Vergunningen, Toezicht & Handhaving

EPC-constructiewaarde

EPG-berekening nietvan toepassing, betreft verbouw
Rc min. wanden en dak dakkapel 4,5k/W
ramen, kozijnen en gelijke constructiedelen min. 1,1 W/m²K

daglichttoetreding

daglicht berekening nietvan toepassing, betreft verbouw.

beglazing

beglazing uitvoeren conform NEN 3569
veiligheidsbeglazing uitvoeren conform NEN 3569 *

inbraakwerendheid

deuren, ramen en kozijnen en daarmee gelijk te stellen constructieonderdelen m.b.t. de woonfunctie dienen te voldoen aan weerstandklasse 2 volgens de in NEN 5096 bepaalde inbraakwerendheid (SKG**)

ventilatievoorzieningen

ventilatievoorzieningen zijn bestaand, m.u.v. nieuwe badkamer.
Nieuwe badkamer voorzien van mechanische afzuiging, capaciteit min. 14dm³/s
badkamer begane grond, toiletten, douche en keuken voorzien van mechanische ventilatie (m.v.) = bestaand
verblifgebieden voorzien van natuurlijke toevoer (v.) d.m.v. roosters in of boven de ramen = bestaand
ventilatievoorzieningen uitvoeren conform de geldende normen en voorschriften NEN1087

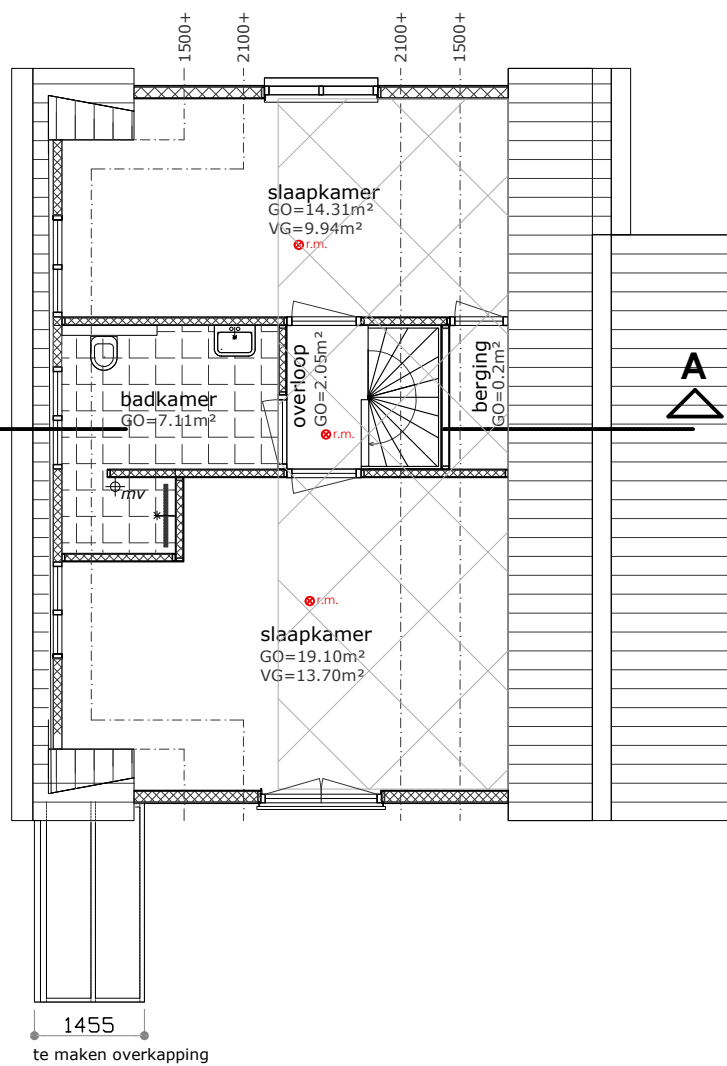
1 3245+

dakopbouw:
vlakke dakpan - nieuw
panlatten en tengel
bestaande zelfdragende geïsoleerde dakplaat
Rc=2,5m²K/W

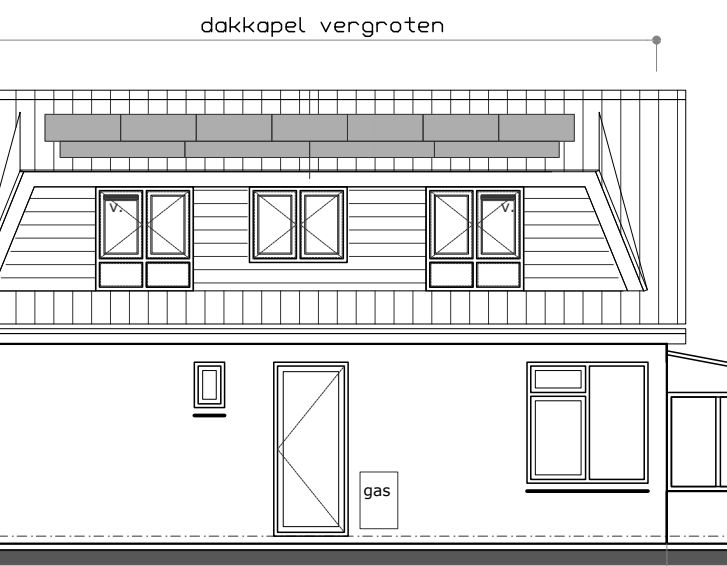
2 4610+

dakopbouw:
vlakke dakpan - nieuw
panlatten en tengel
geïsoleerde dakplaat, Rc=6,35m²K/W
* spaanplaat dik 13mm.
* IKO Enertherm Alu duk 140mm.,
Rd=6,35m²K/W
* sporen 38x140mm.
* spaanplaat dik 13mm
* gipsplaat 12,5mm.

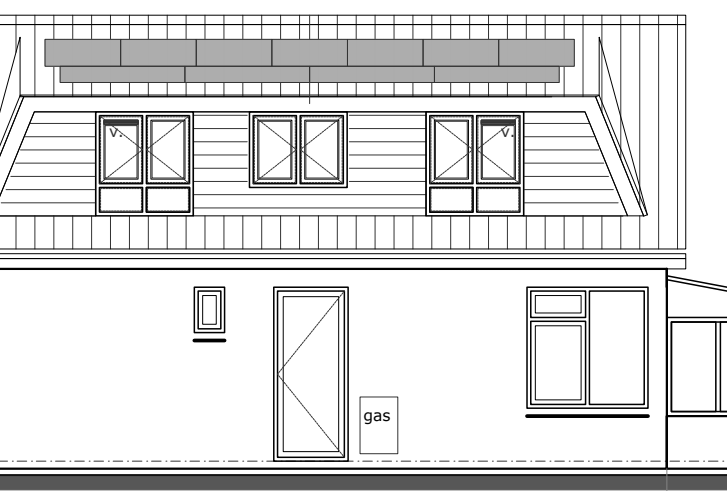
verdieping



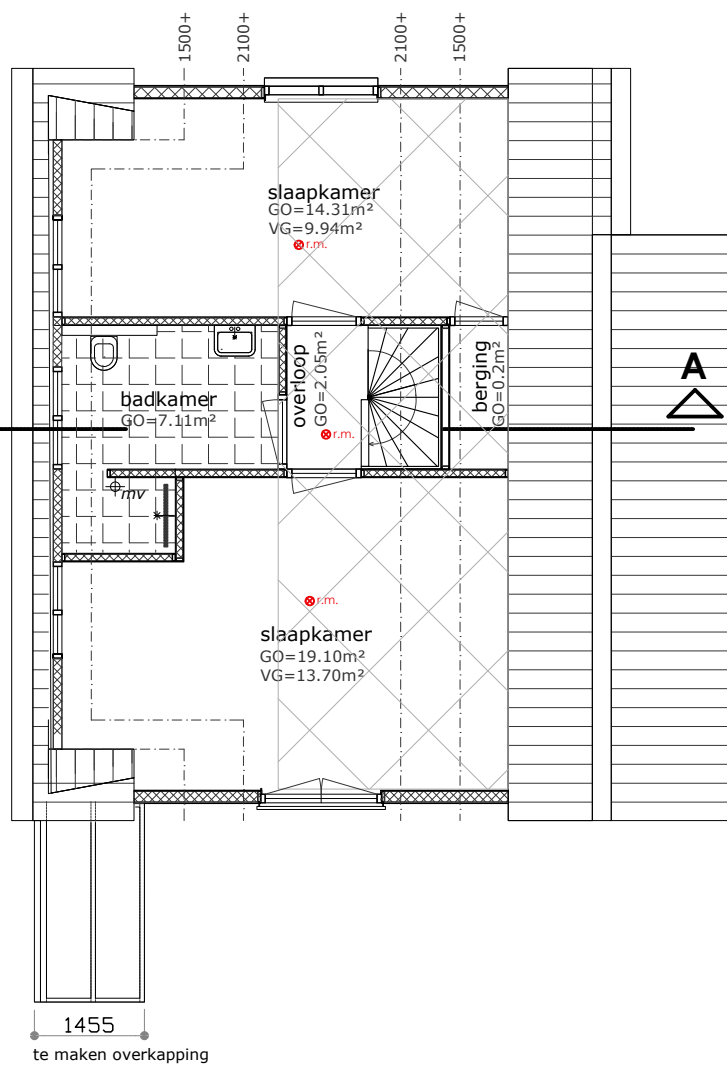
verdieping



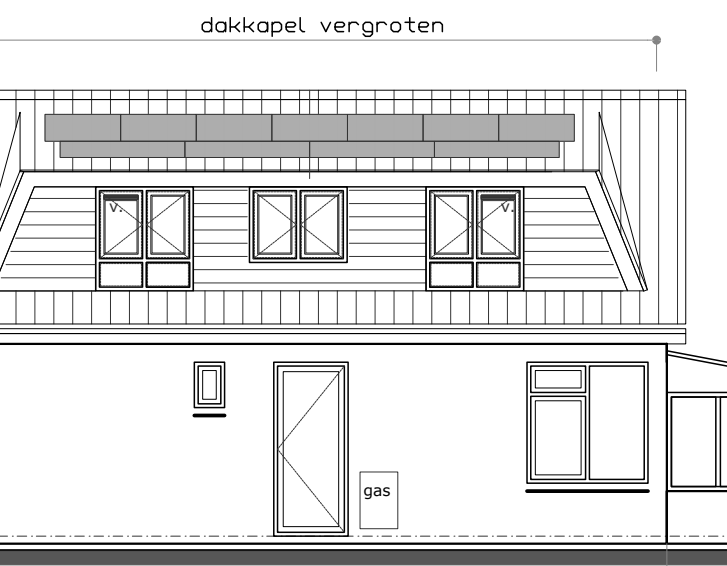
rechter zijgevel



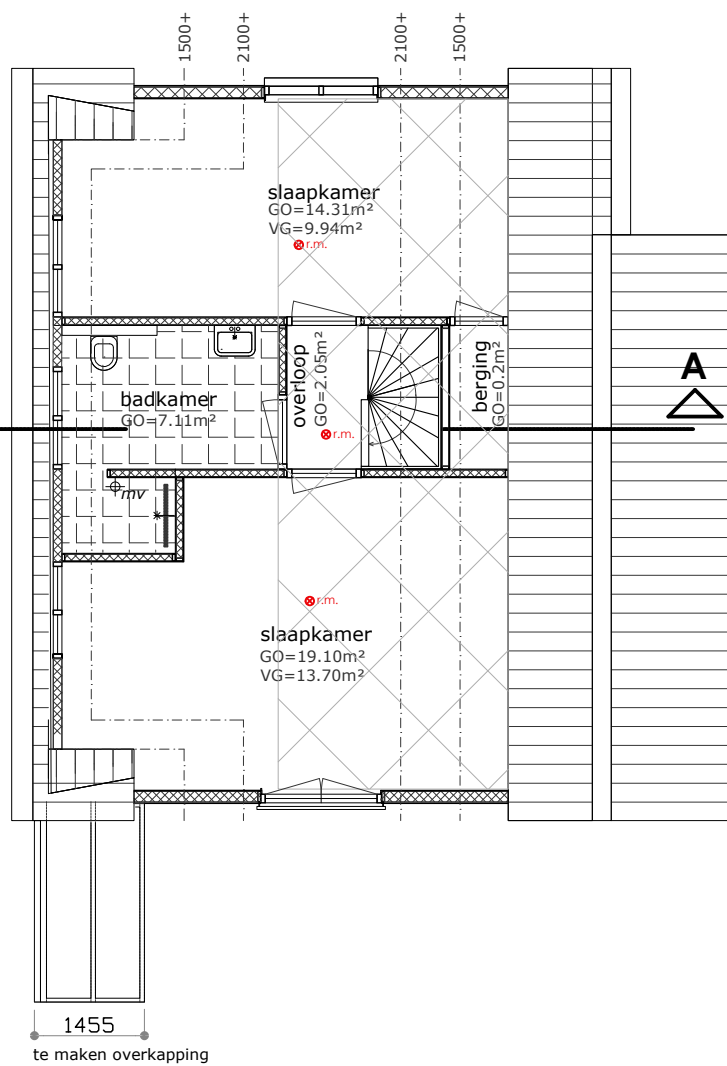
rechter zijgevel



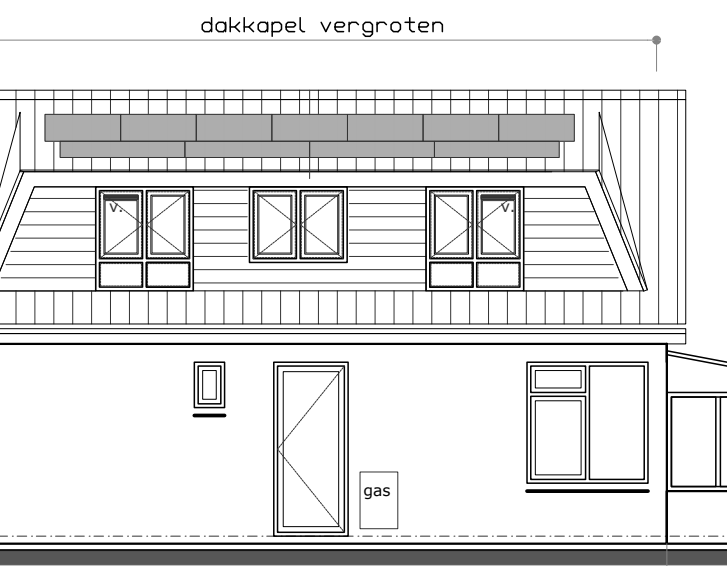
rechter zijgevel



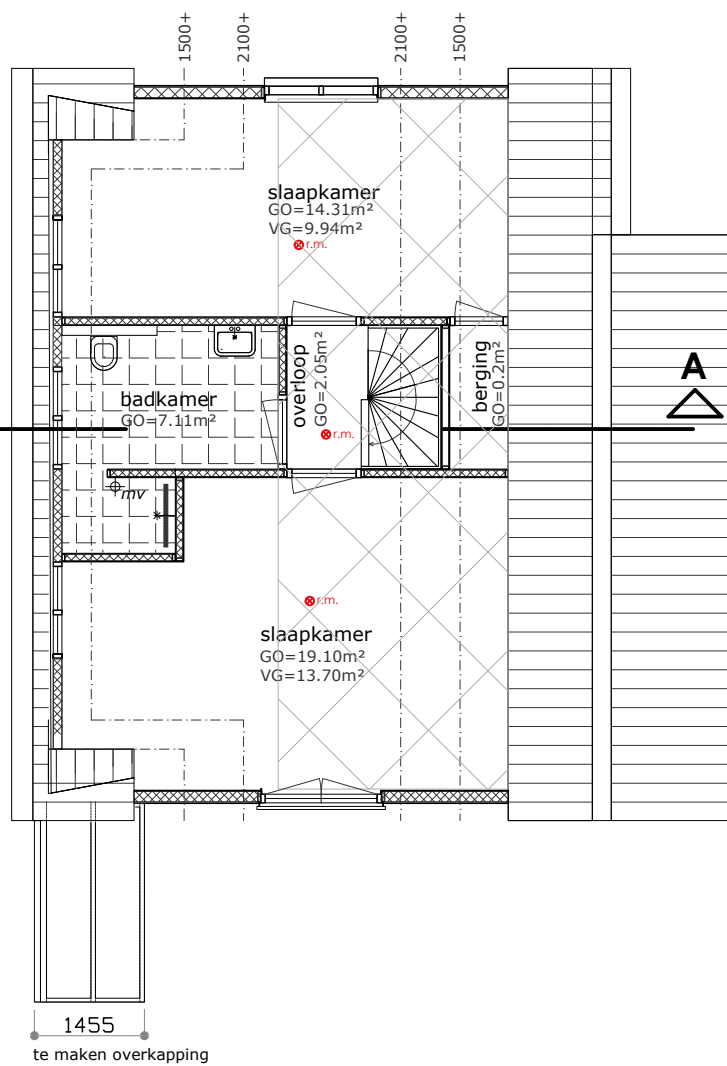
rechter zijgevel



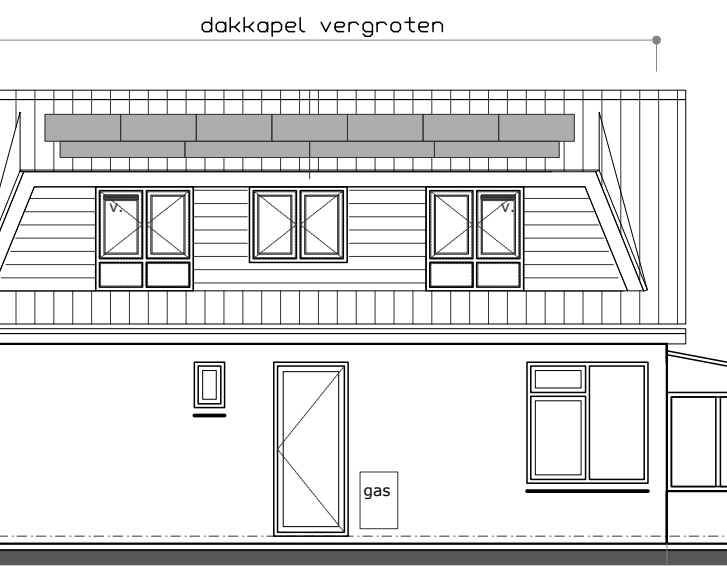
rechter zijgevel



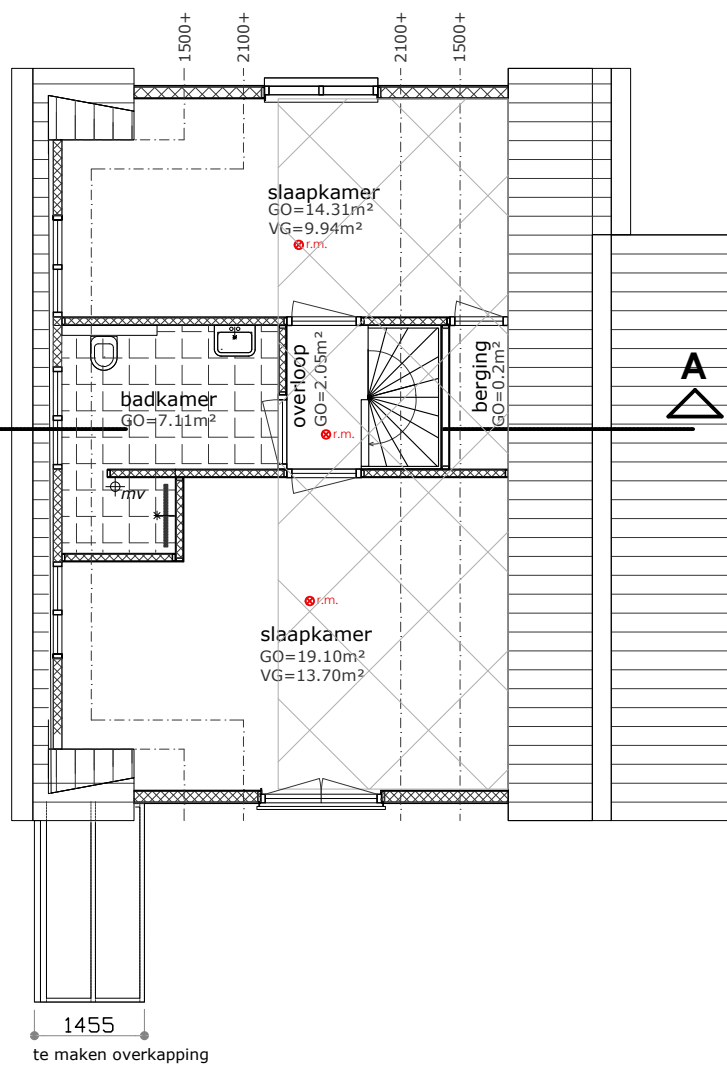
rechter zijgevel



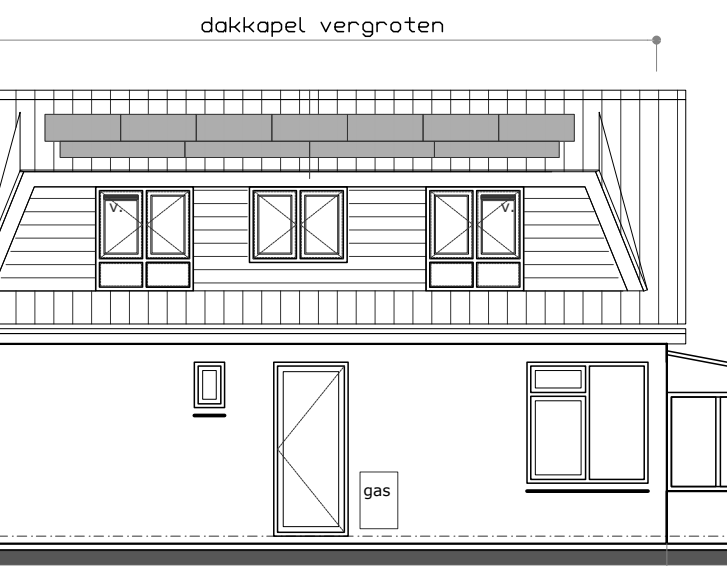
rechter zijgevel



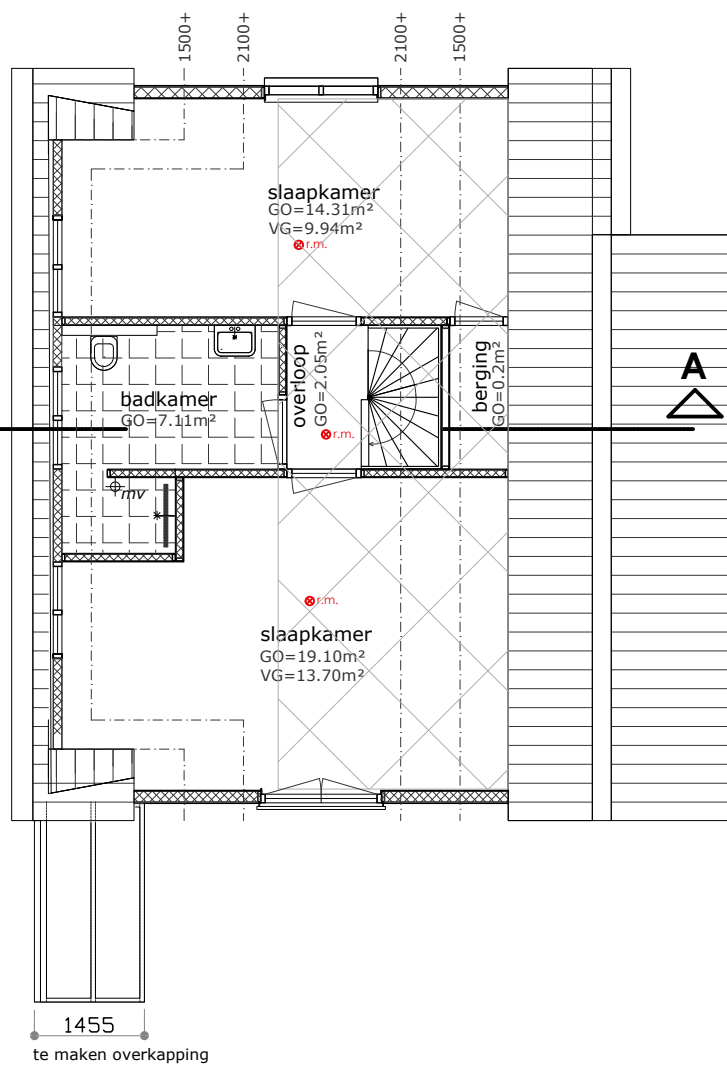
rechter zijgevel



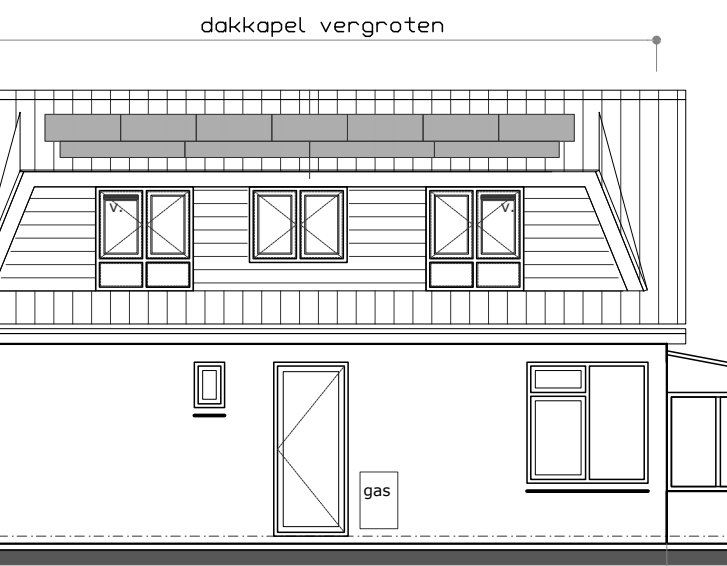
rechter zijgevel



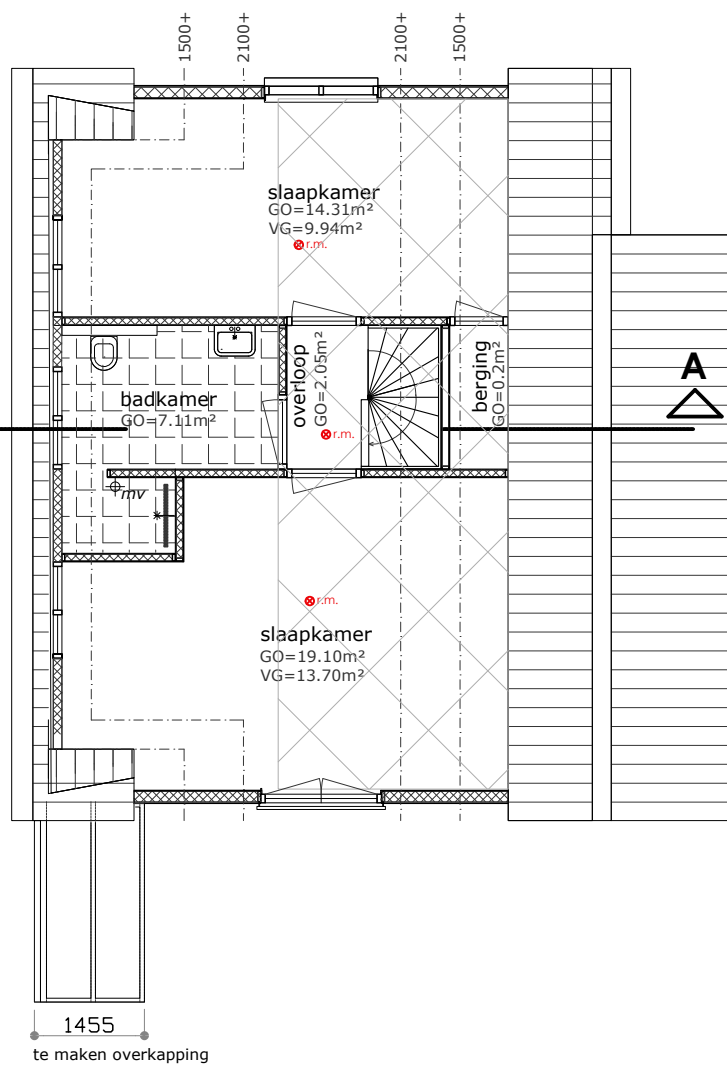
rechter zijgevel



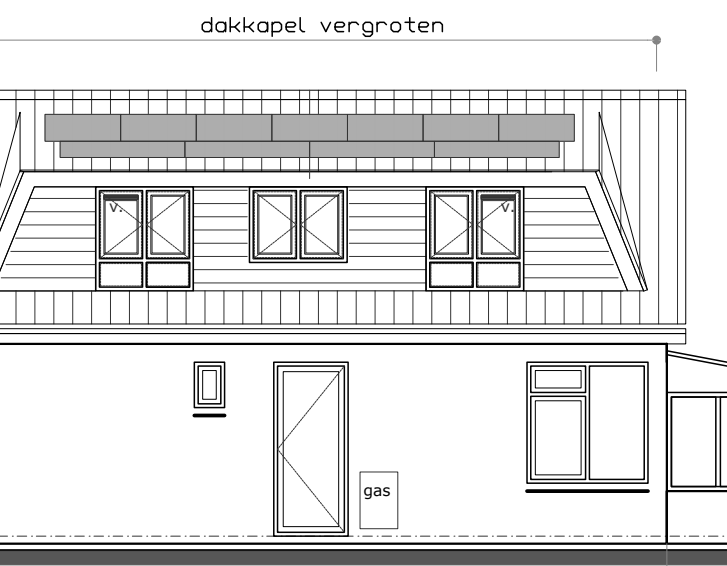
rechter zijgevel



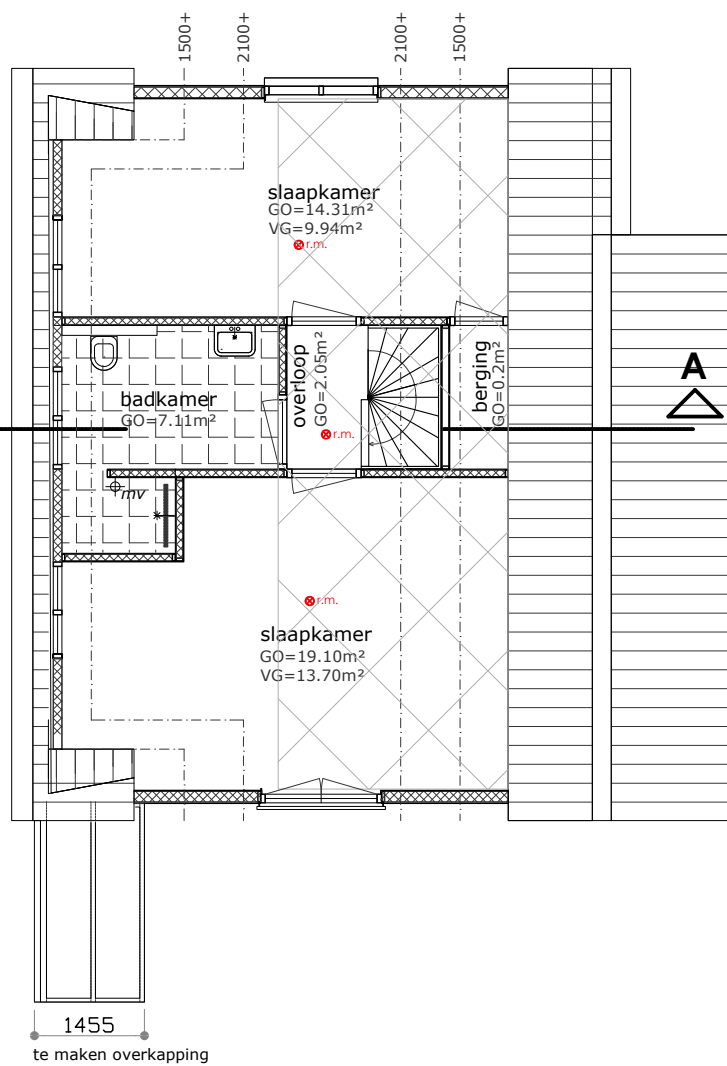
rechter zijgevel



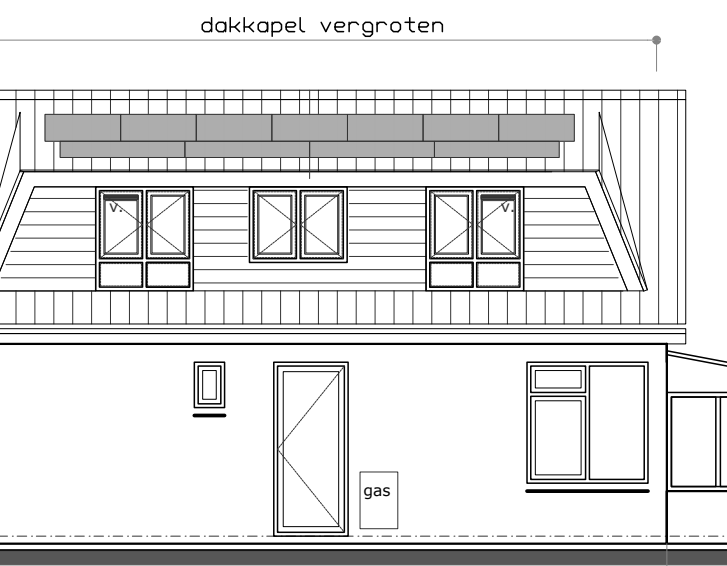
rechter zijgevel



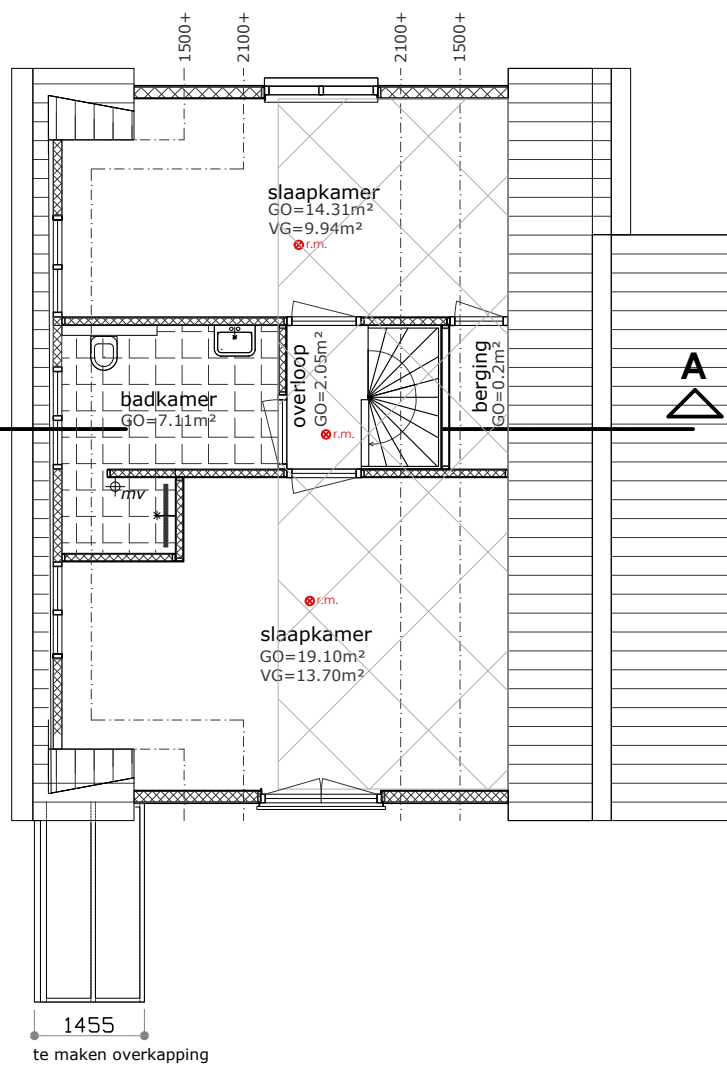
rechter zijgevel



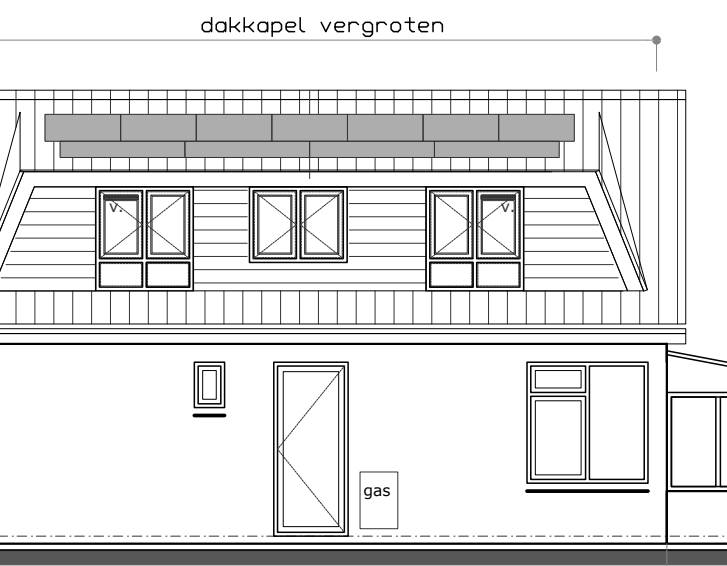
rechter zijgevel



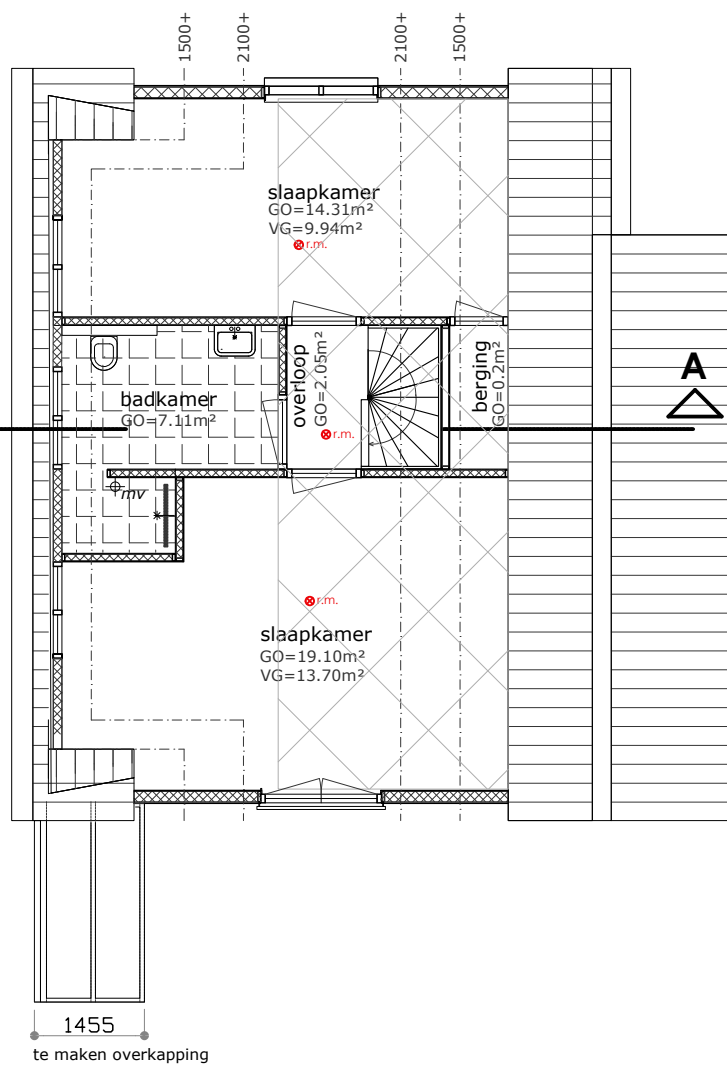
rechter zijgevel



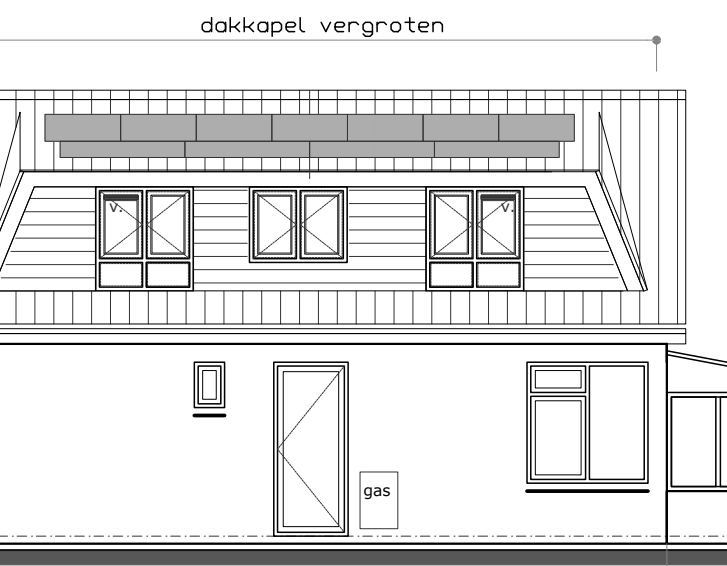
rechter zijgevel



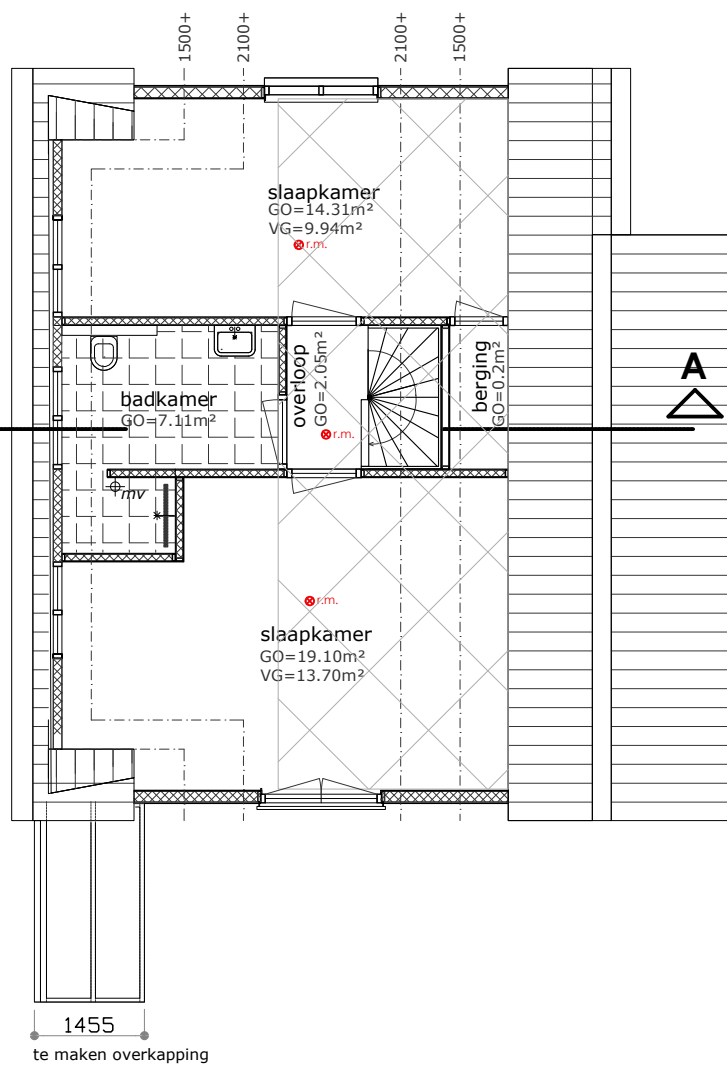
rechter zijgevel



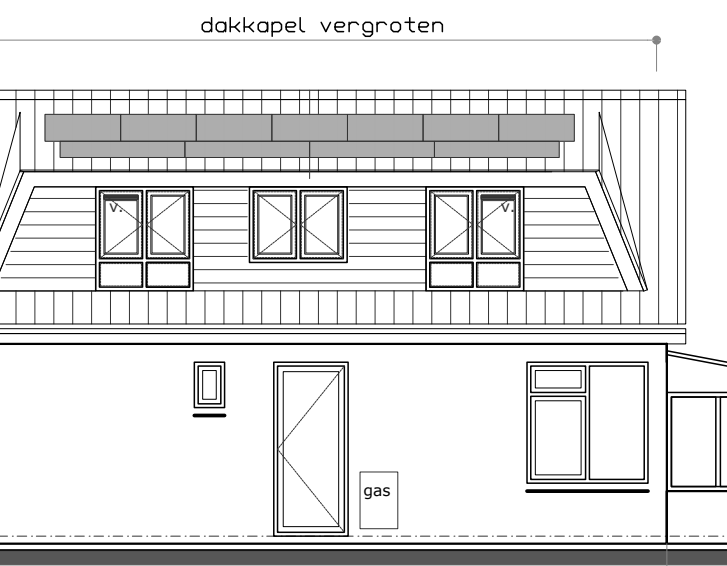
rechter zijgevel



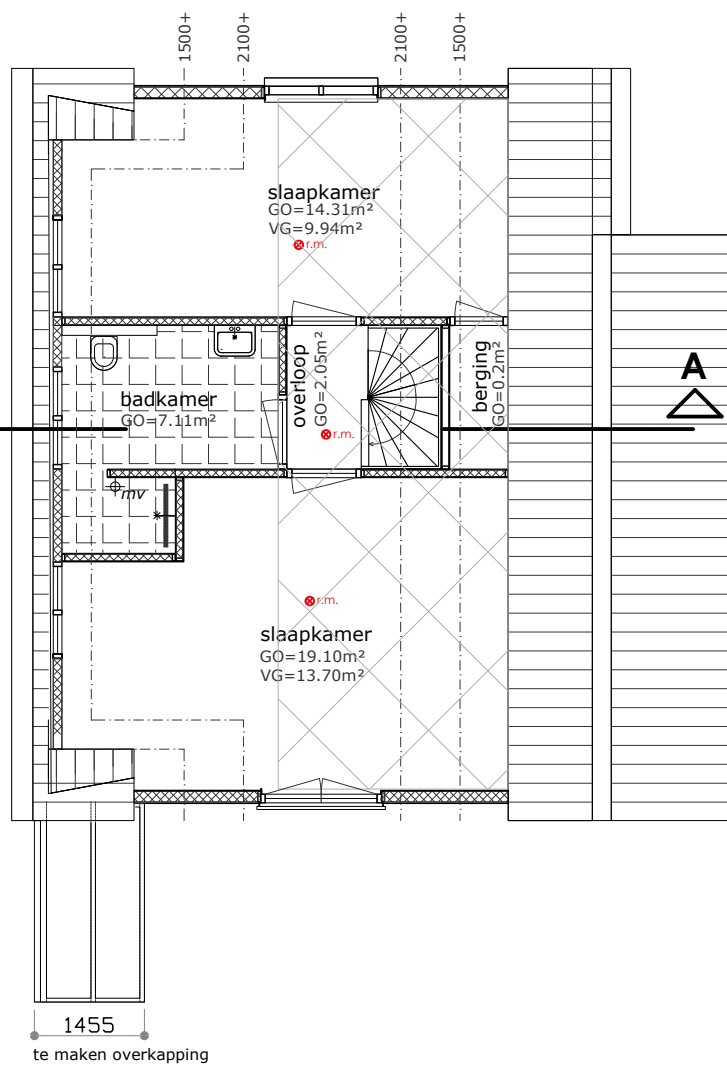
rechter zijgevel



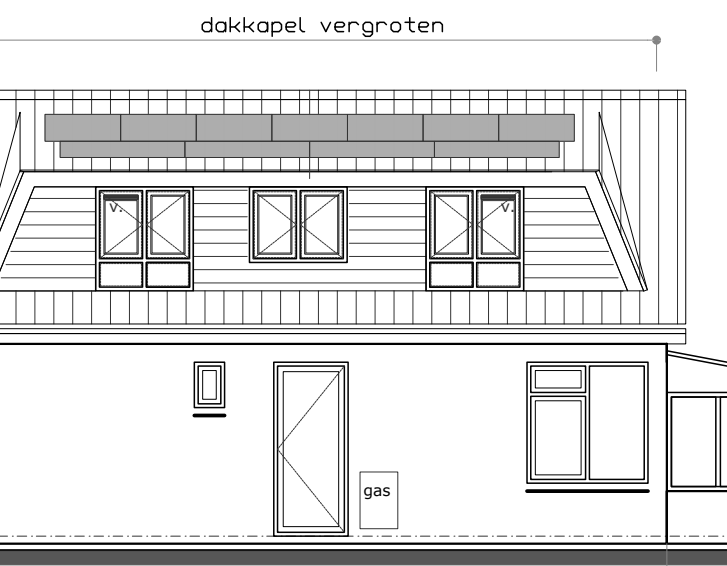
rechter zijgevel



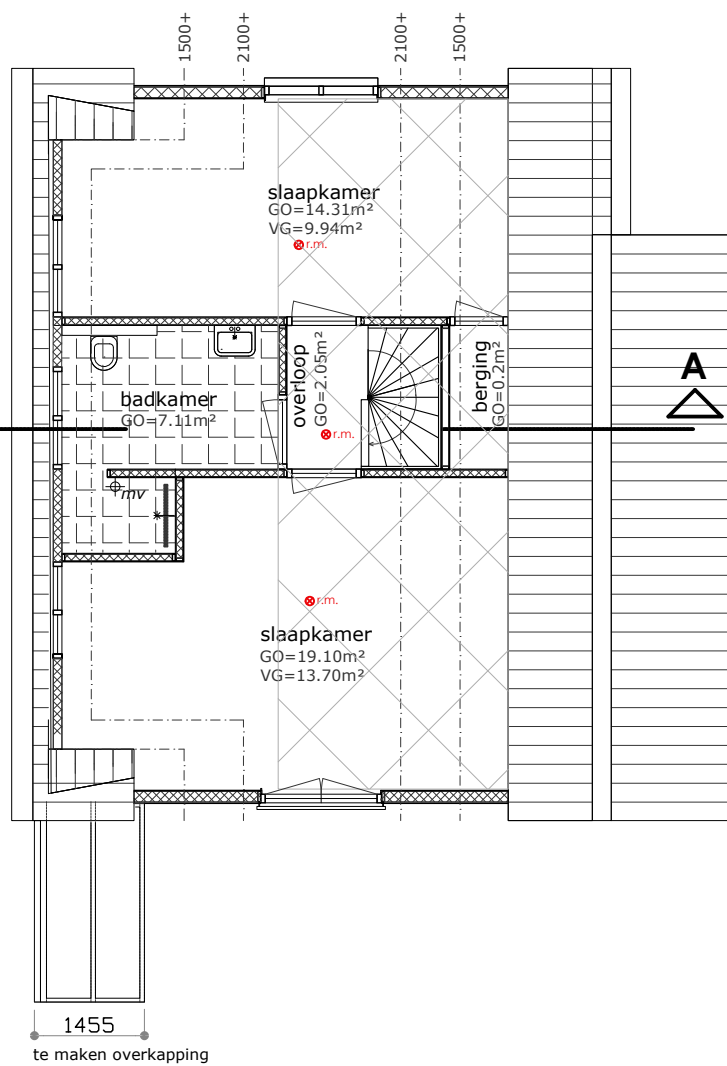
rechter zijgevel



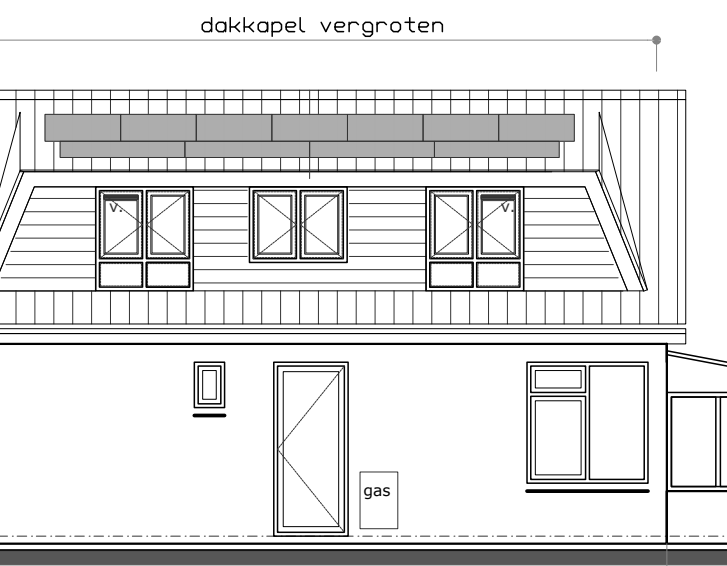
rechter zijgevel



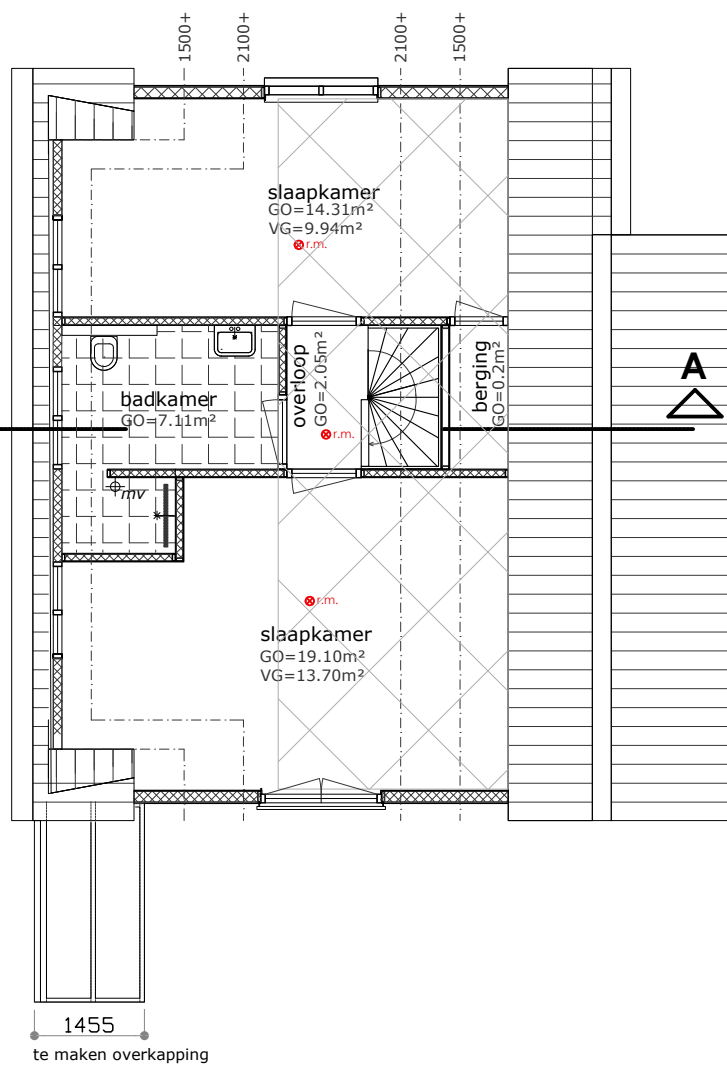
rechter zijgevel



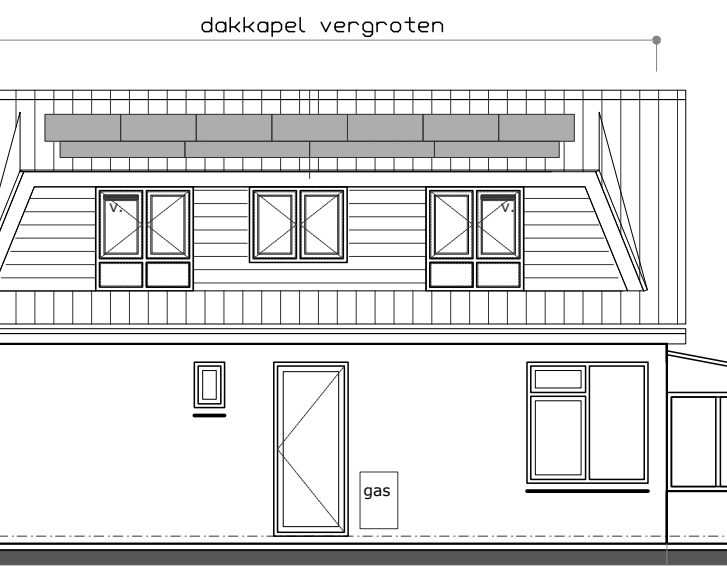
rechter zijgevel



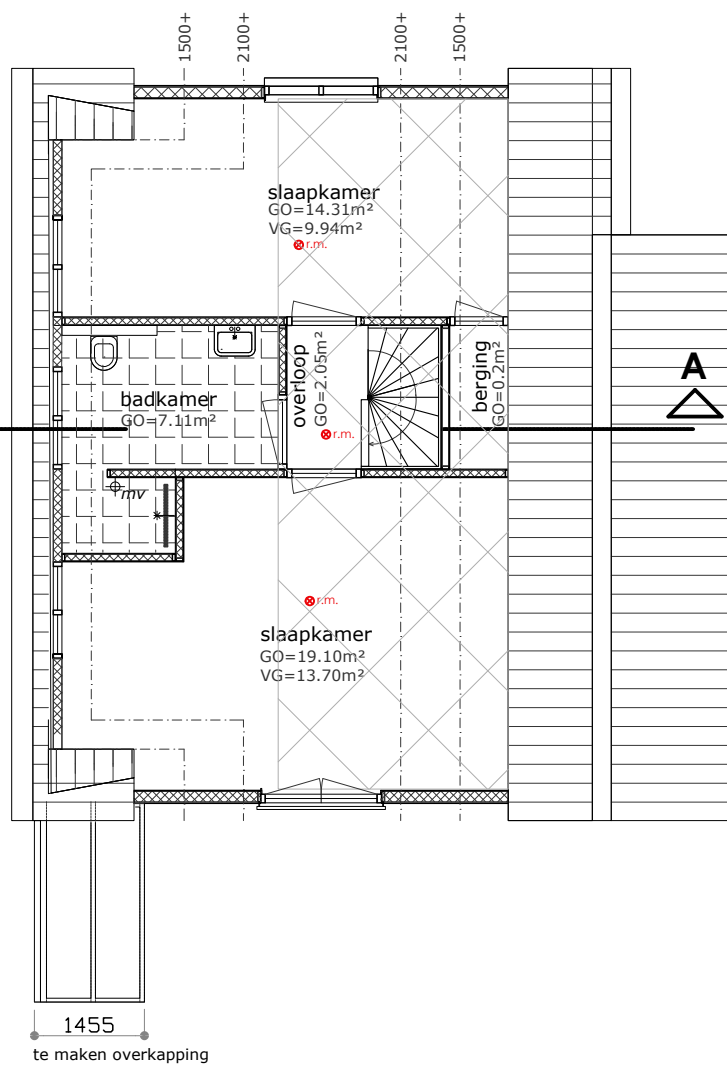
rechter zijgevel



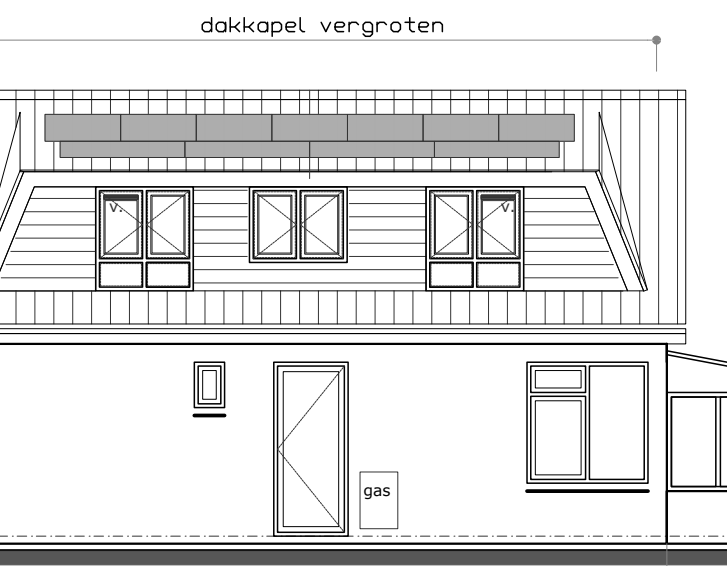
rechter zijgevel



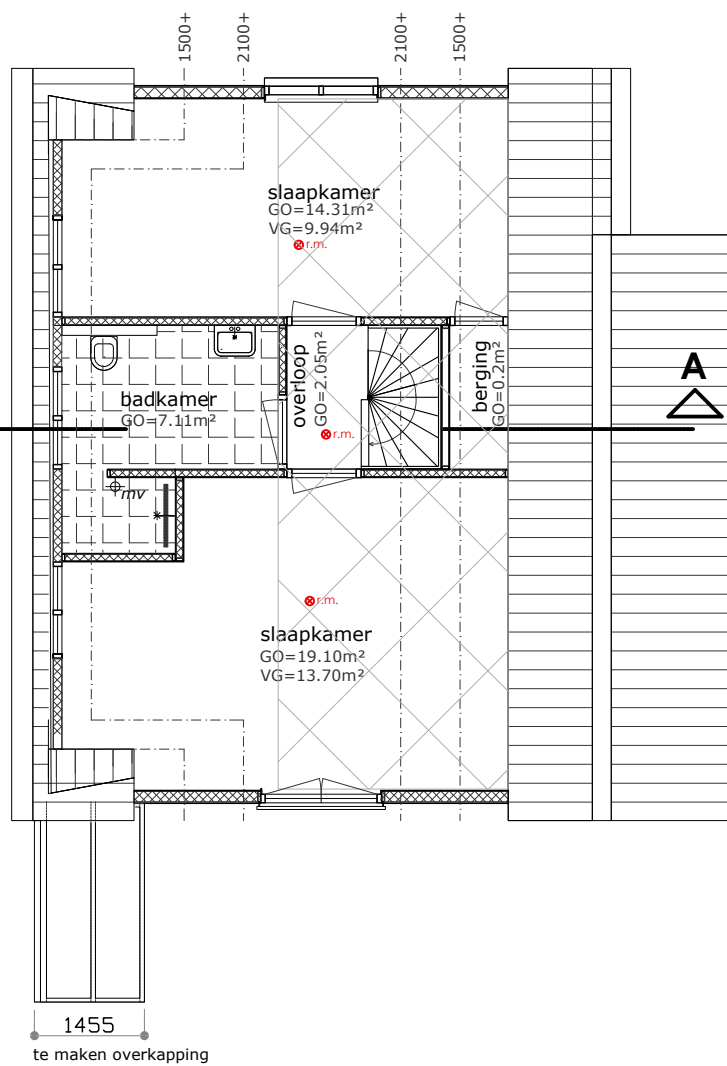
rechter zijgevel



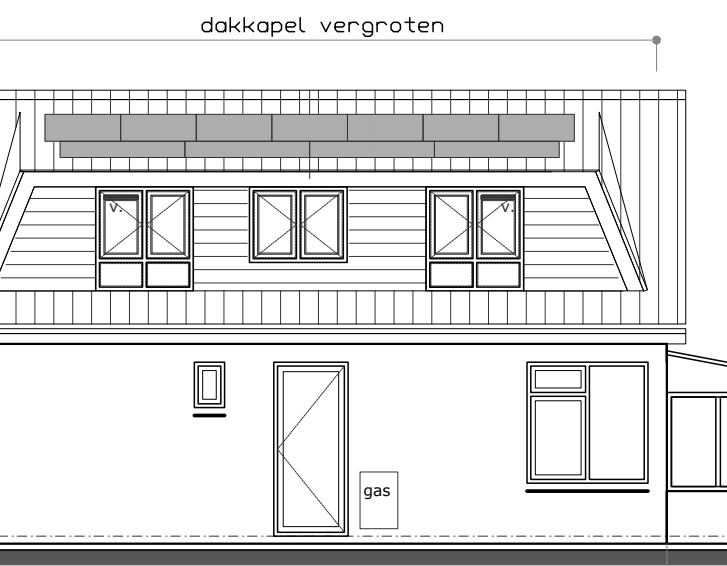
rechter zijgevel



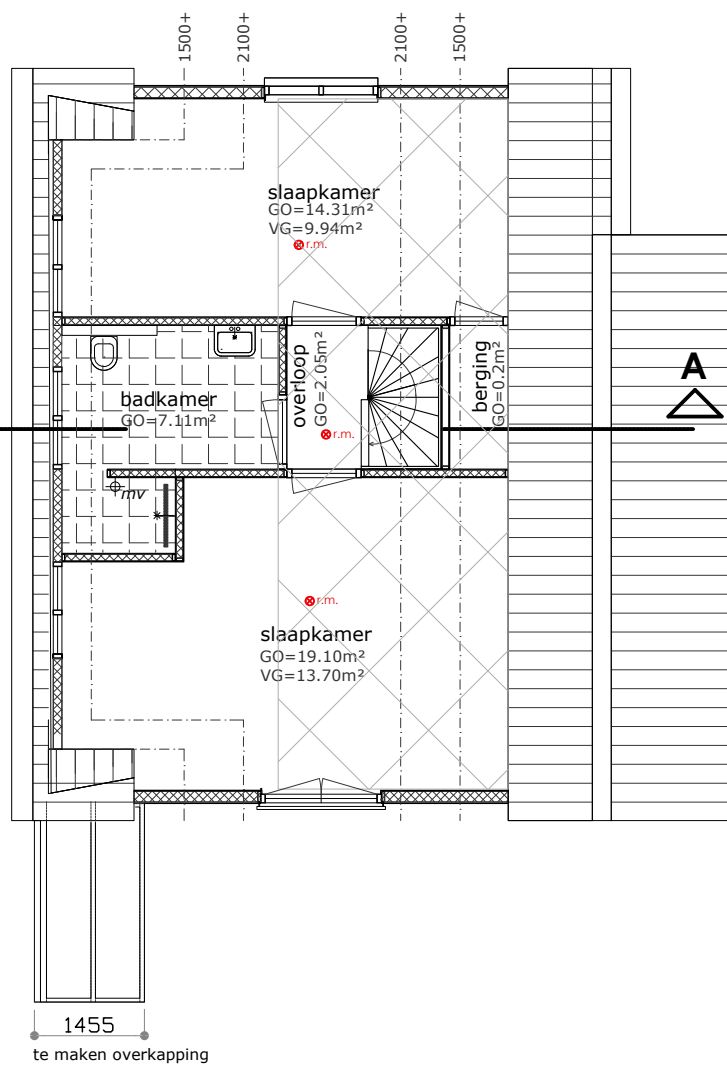
rechter zijgevel



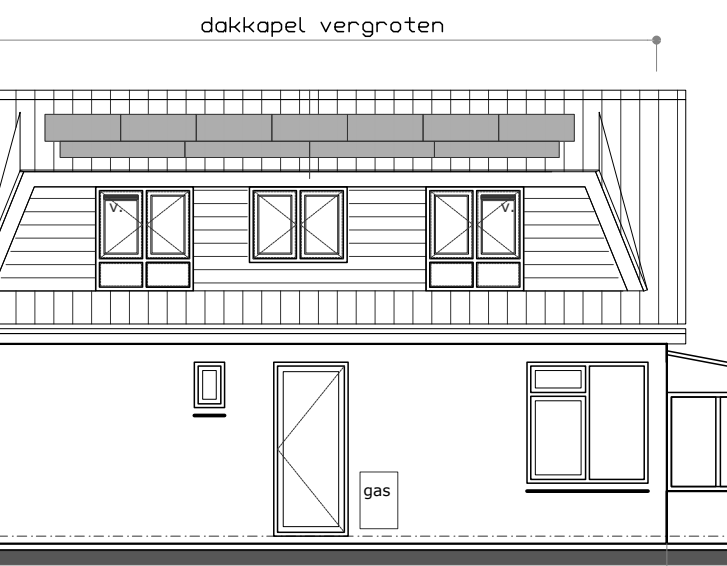
rechter zijgevel



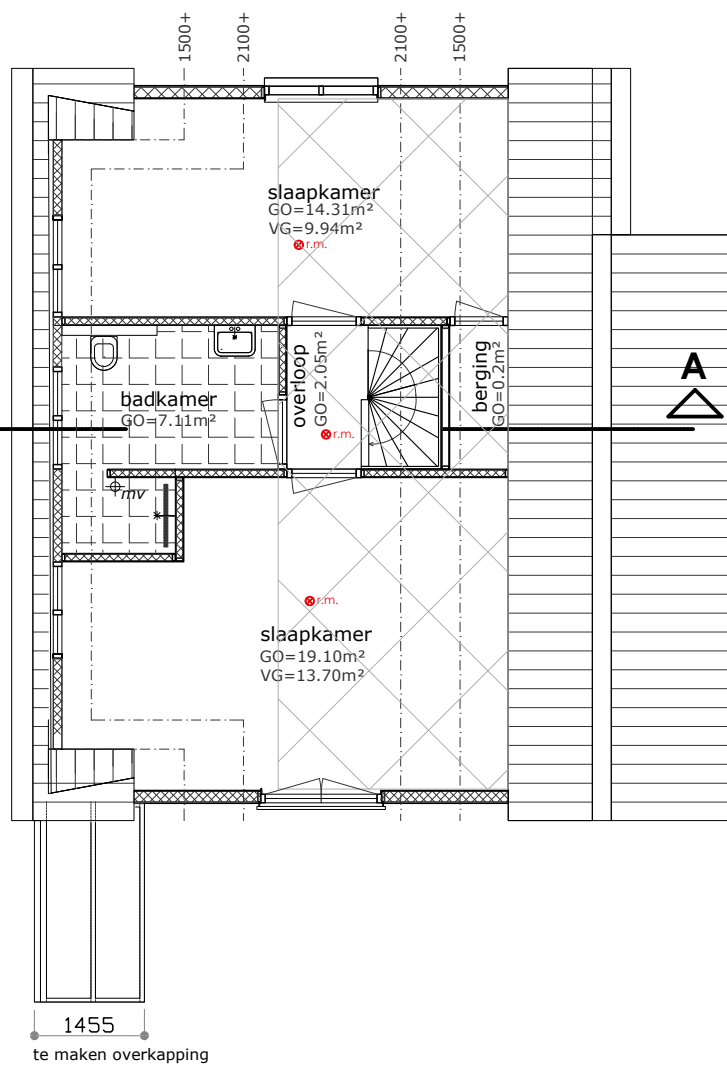
rechter zijgevel



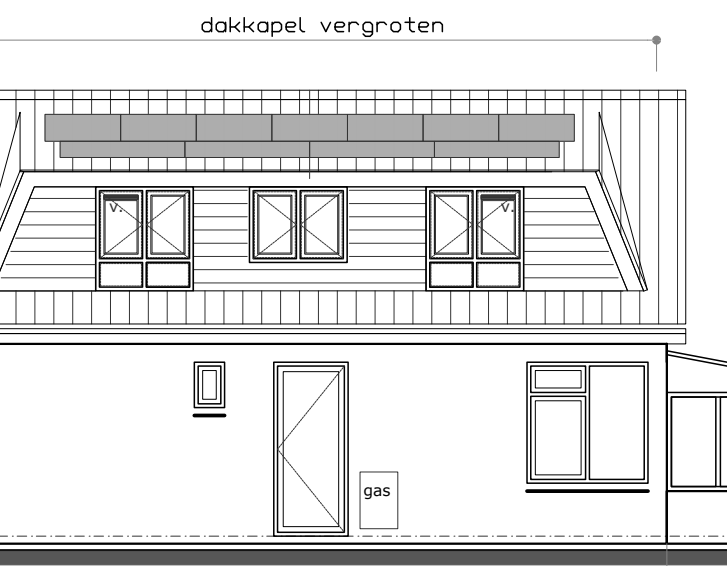
rechter zijgevel



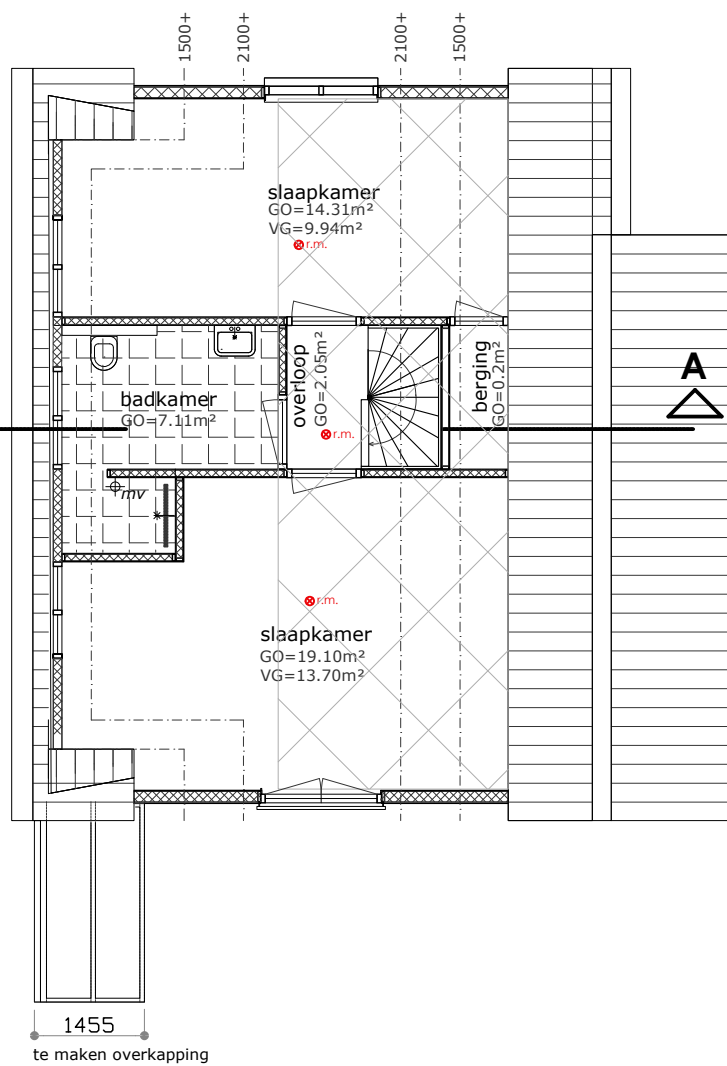
rechter zijgevel



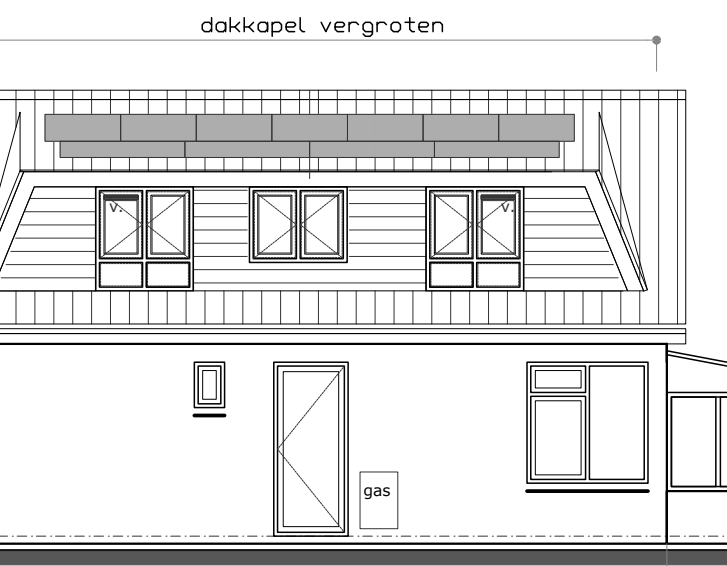
rechter zijgevel



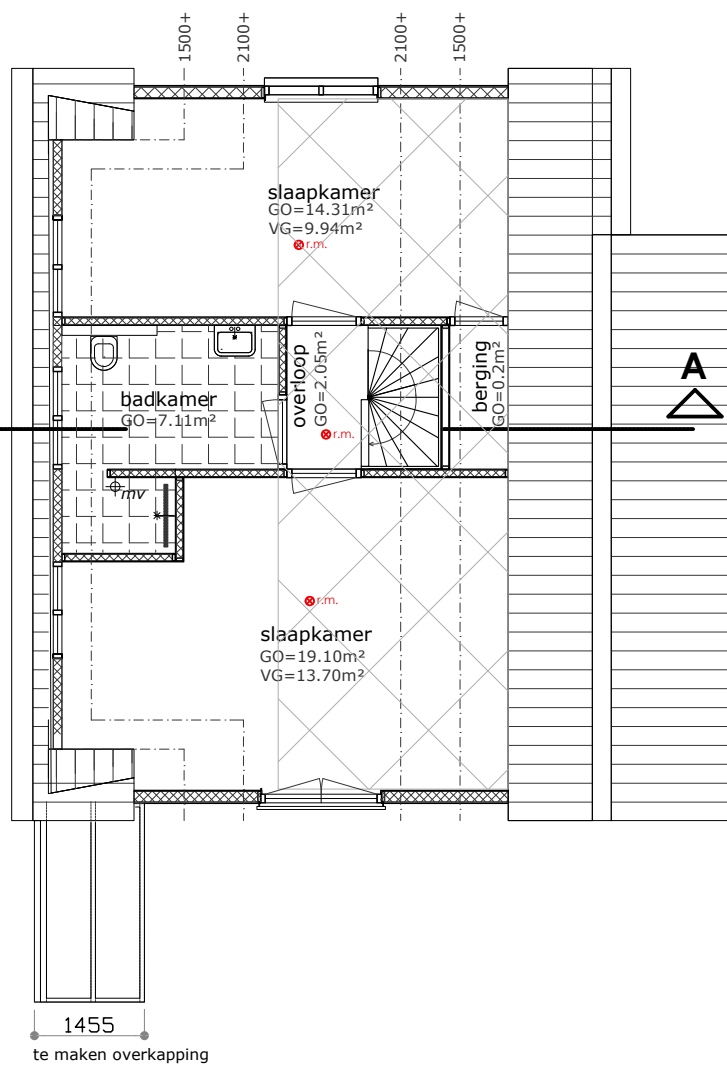
rechter zijgevel



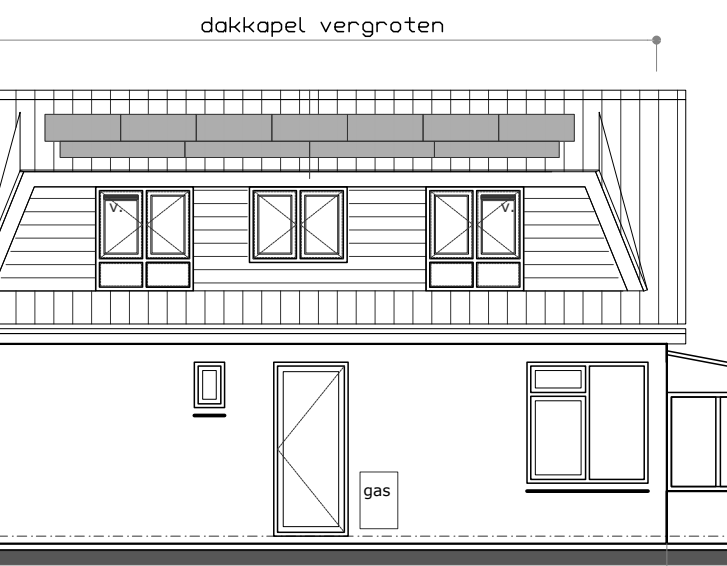
rechter zijgevel



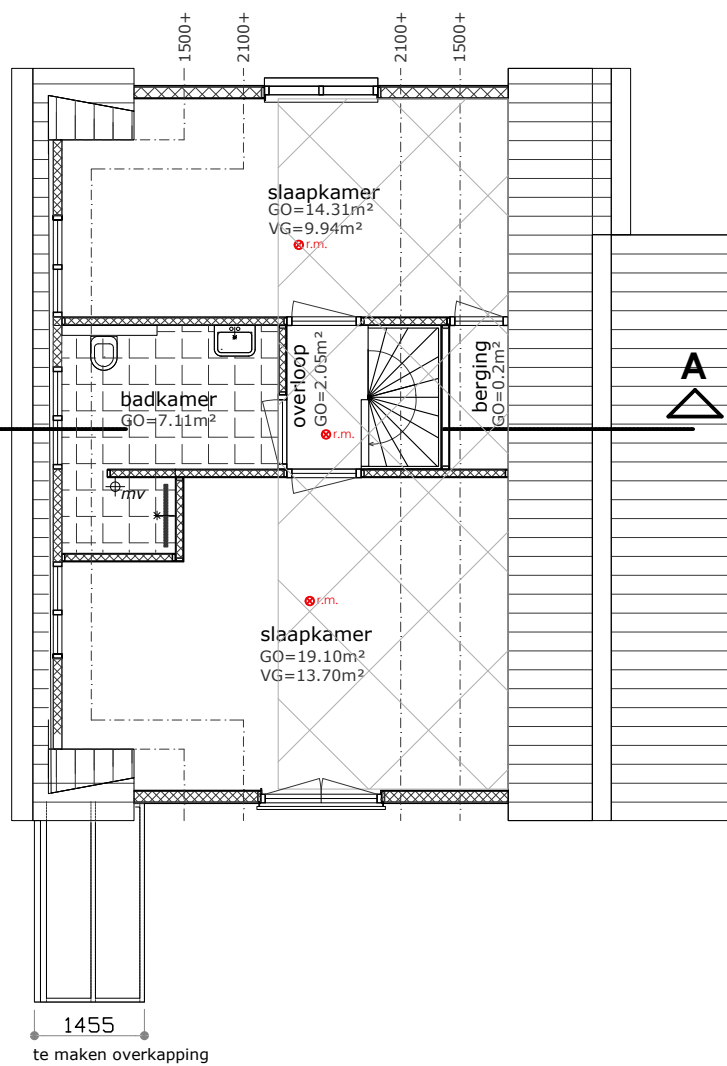
rechter zijgevel



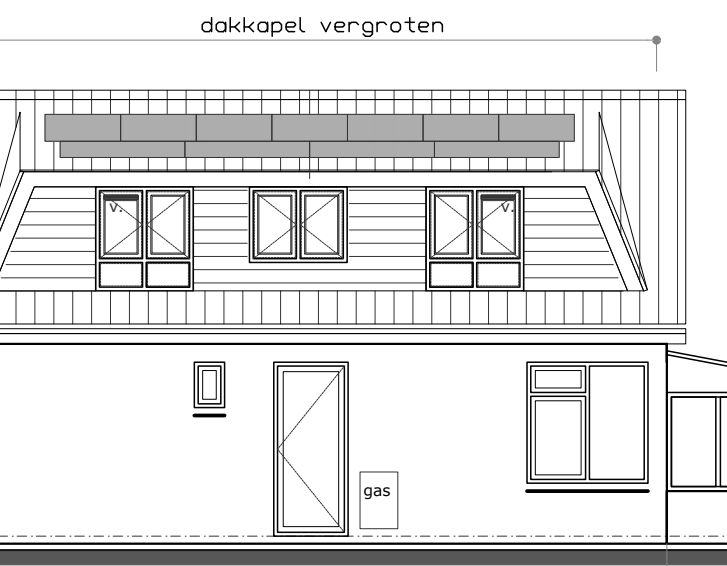
rechter zijgevel



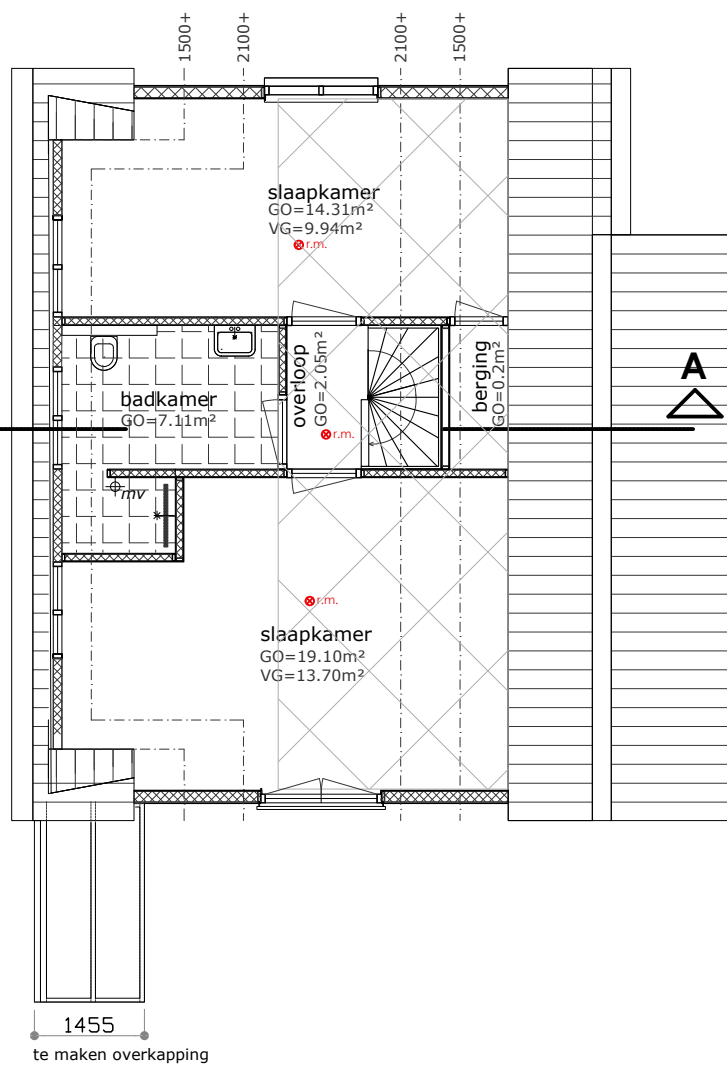
rechter zijgevel



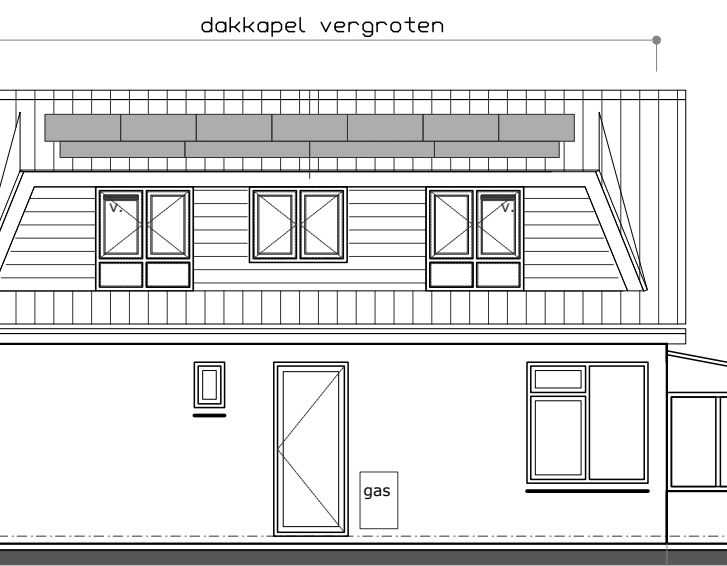
rechter zijgevel



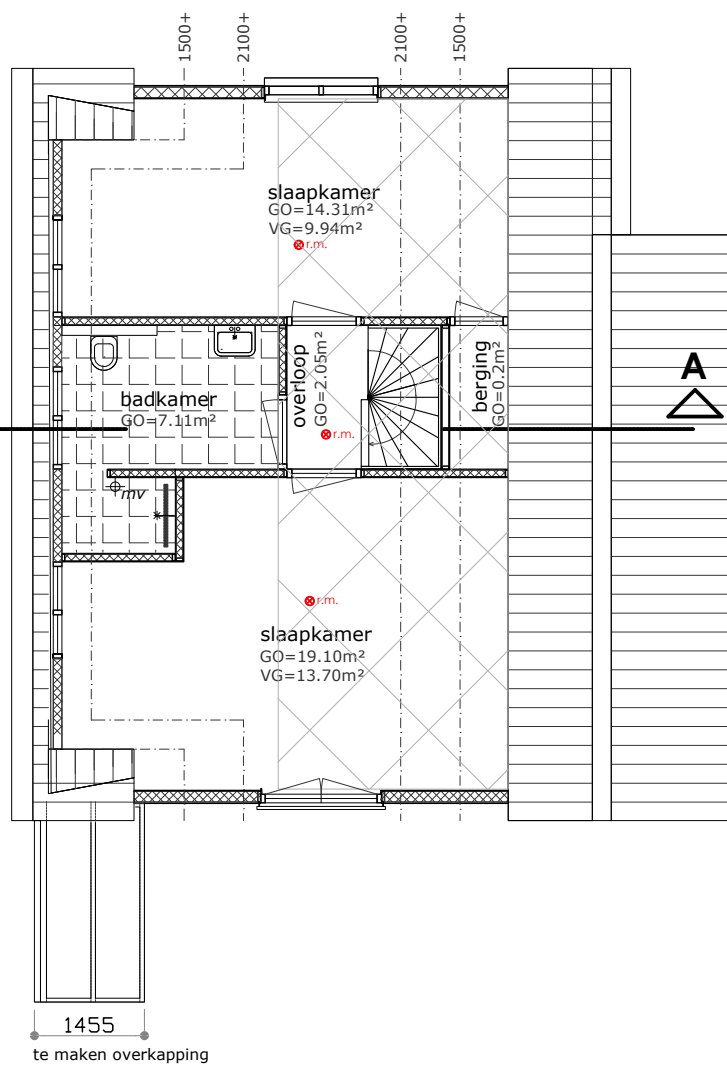
rechter zijgevel



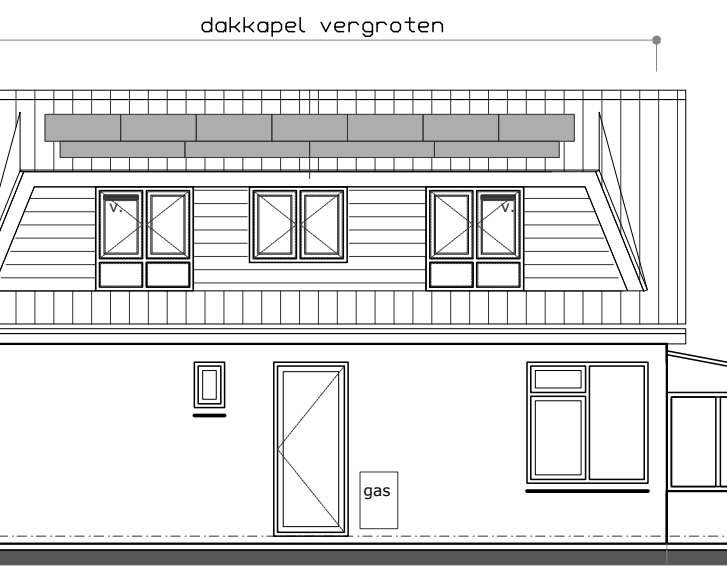
rechter zijgevel



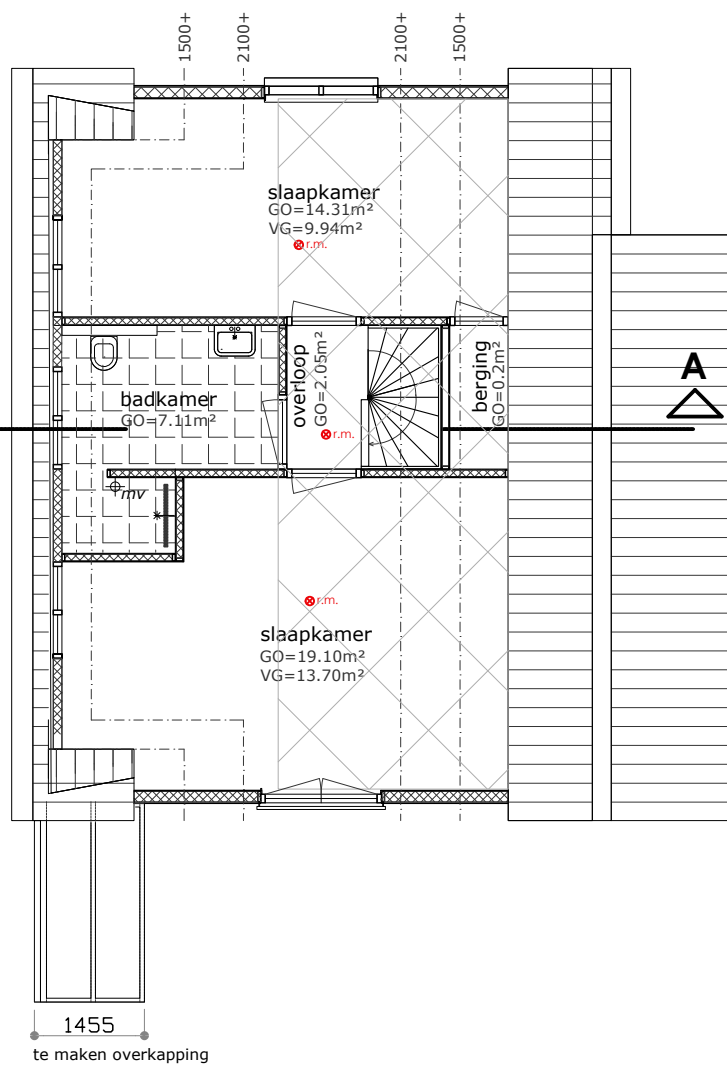
rechter zijgevel



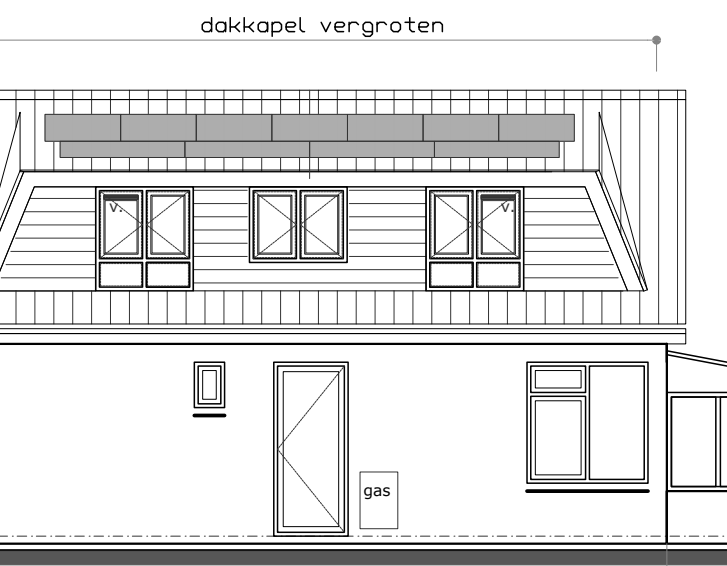
rechter zijgevel



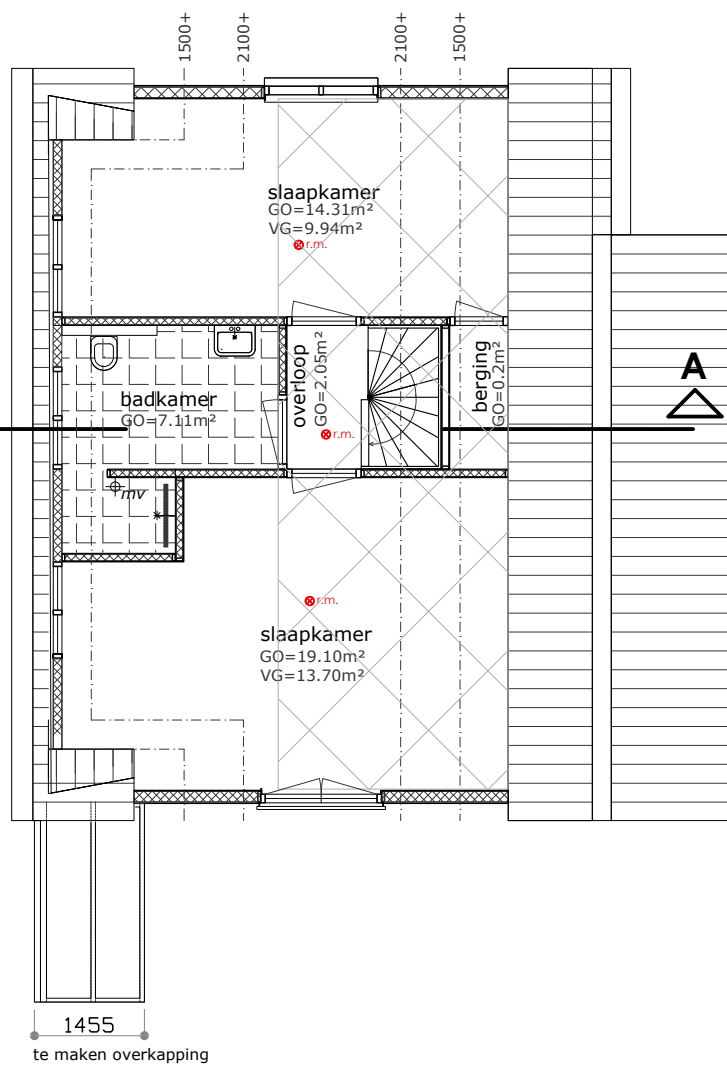
rechter zijgevel



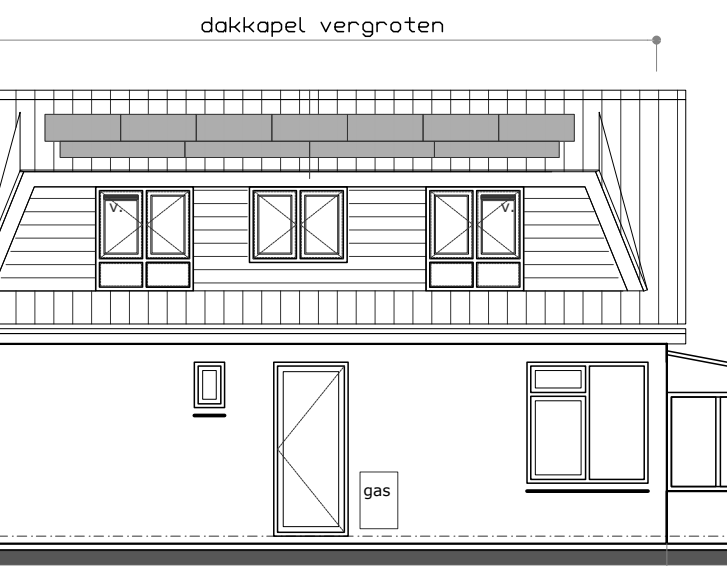
rechter zijgevel



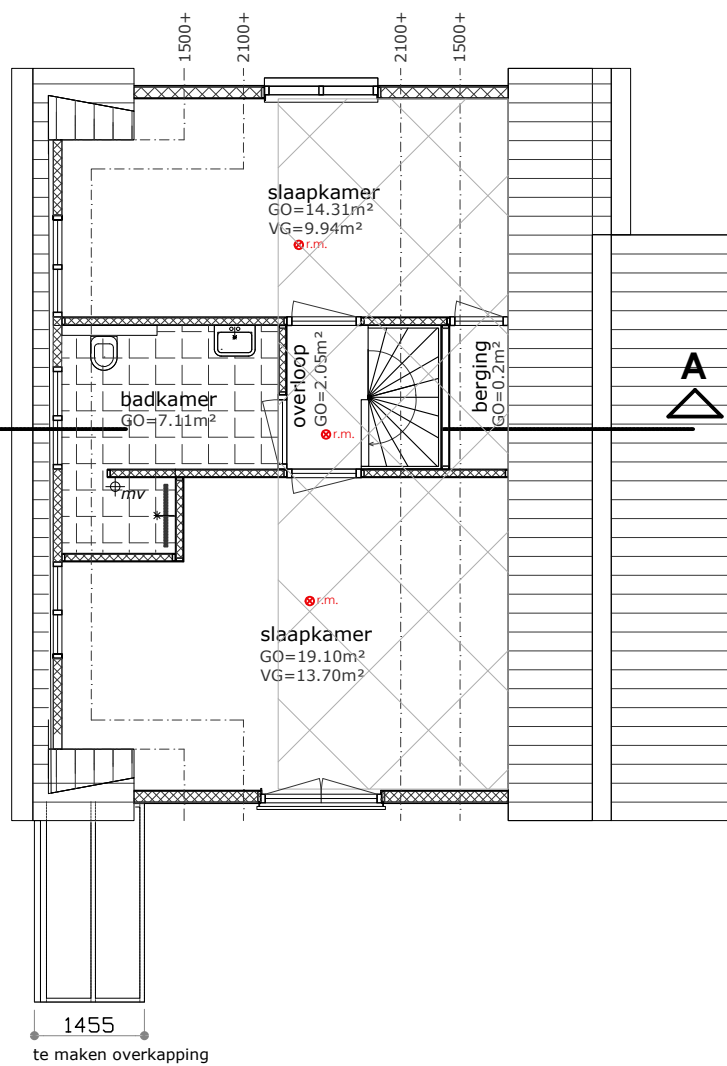
rechter zijgevel



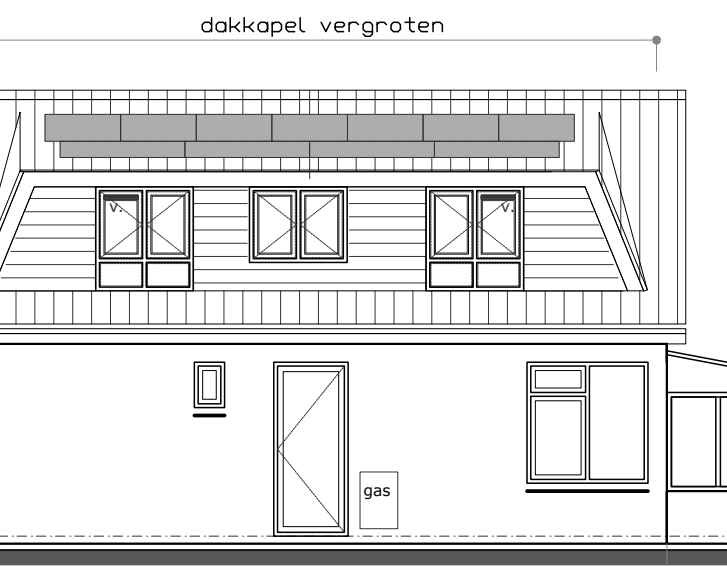
rechter zijgevel



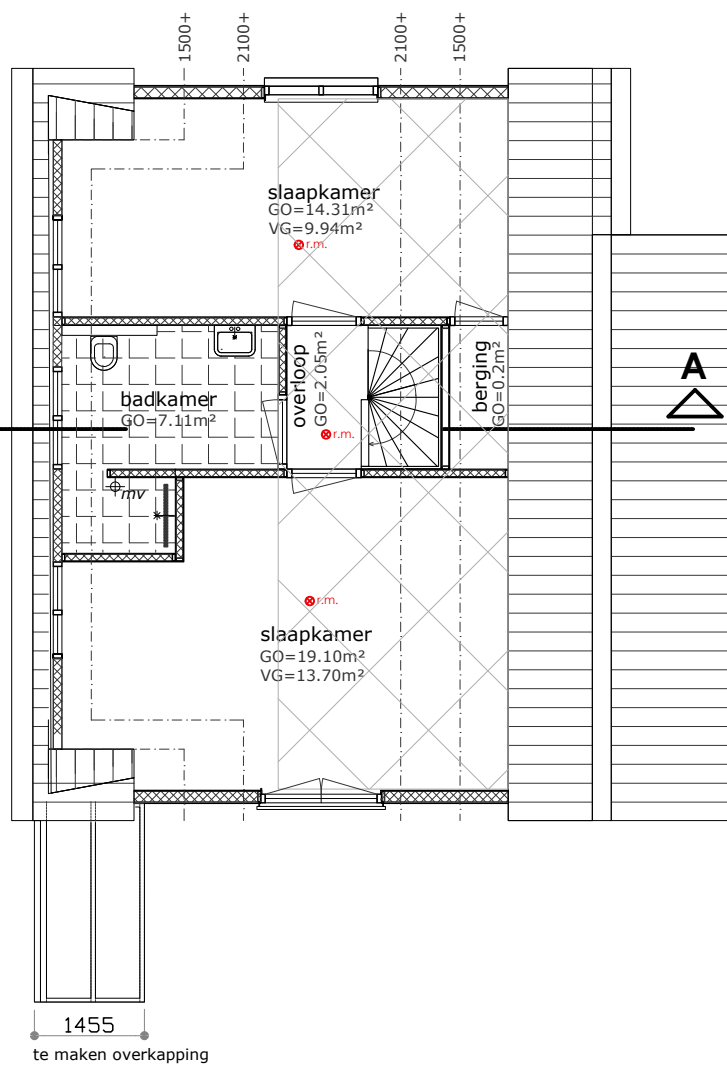
rechter zijgevel



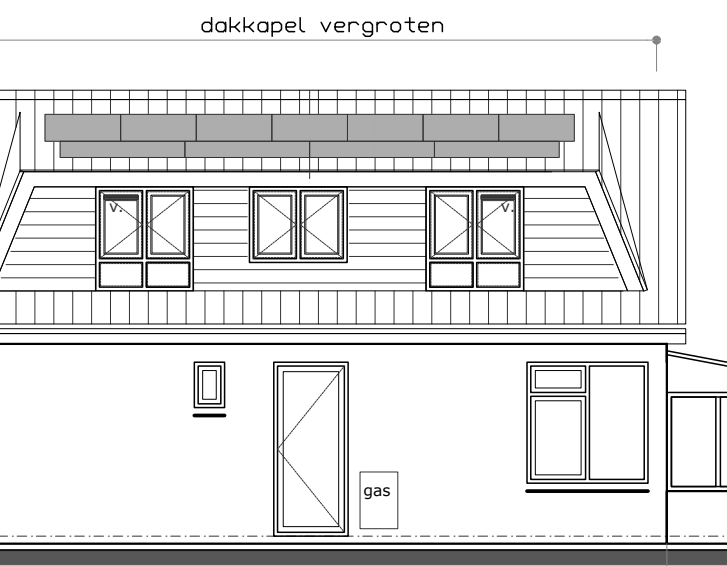
rechter zijgevel



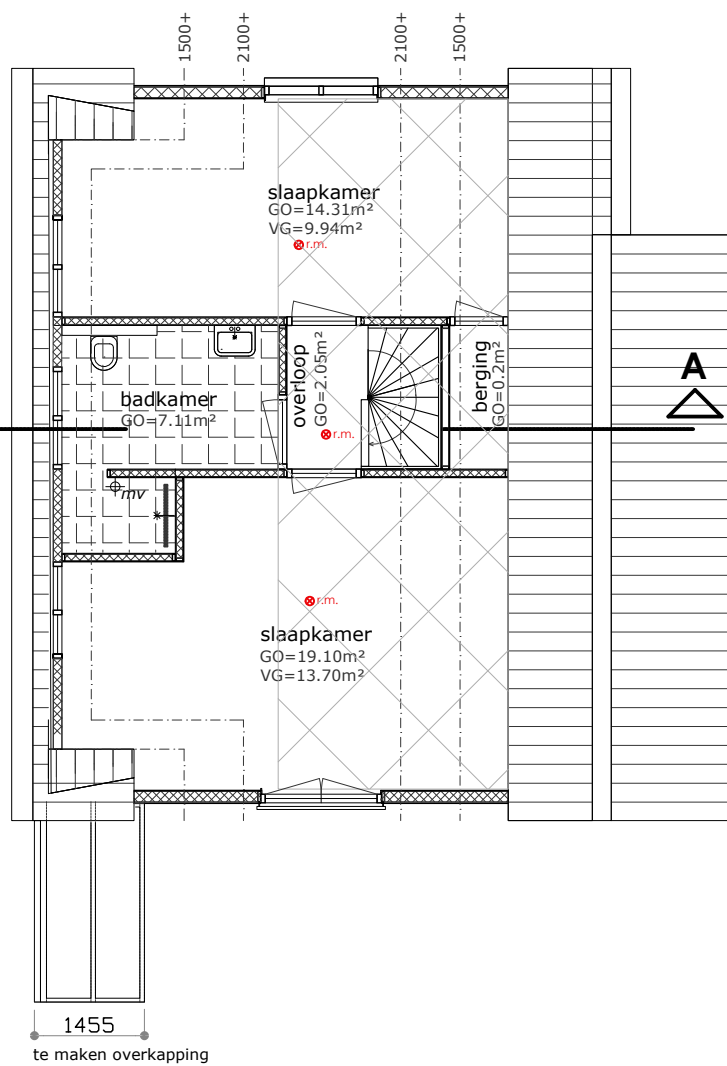
rechter zijgevel



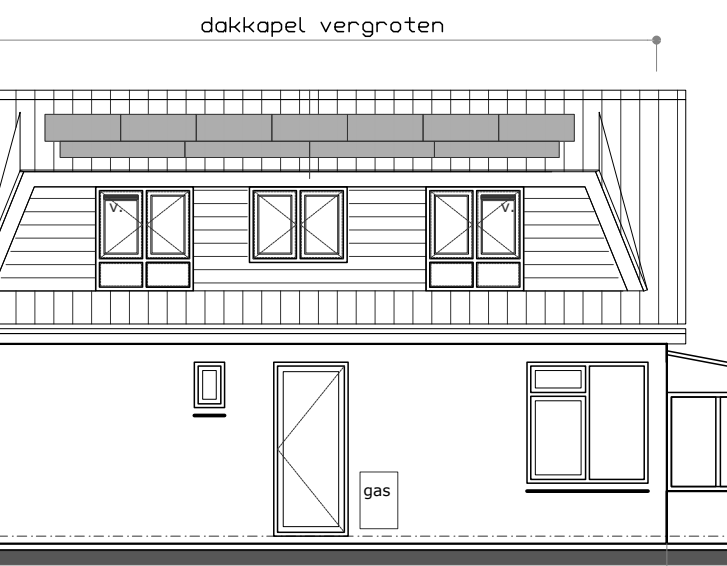
rechter zijgevel



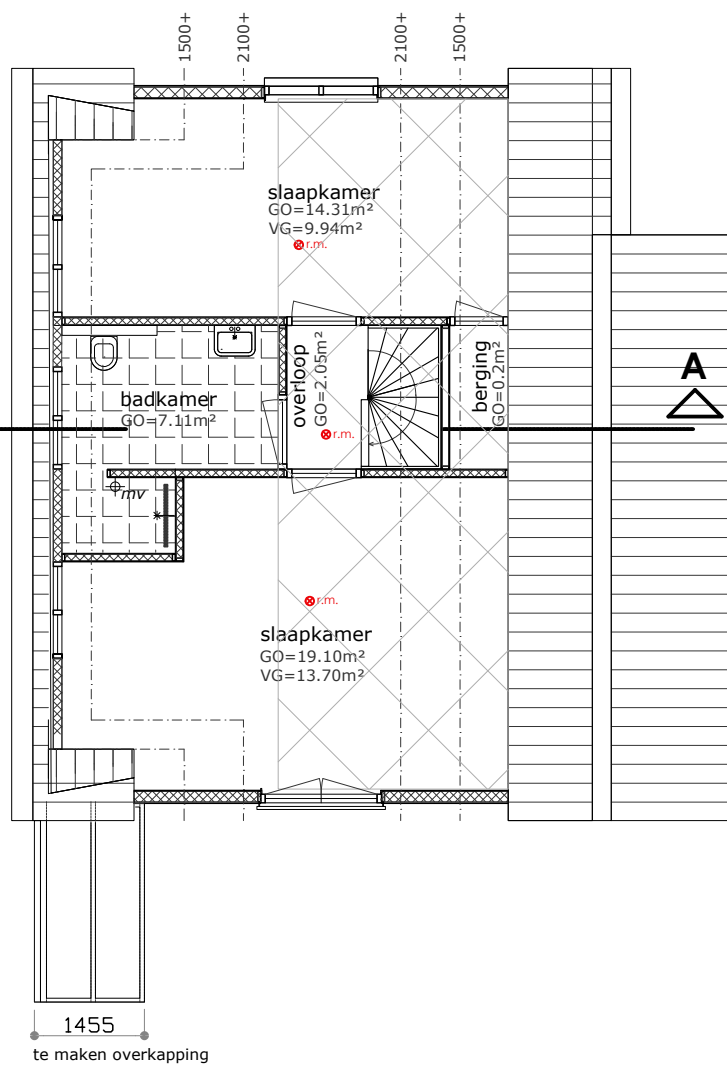
rechter zijgevel



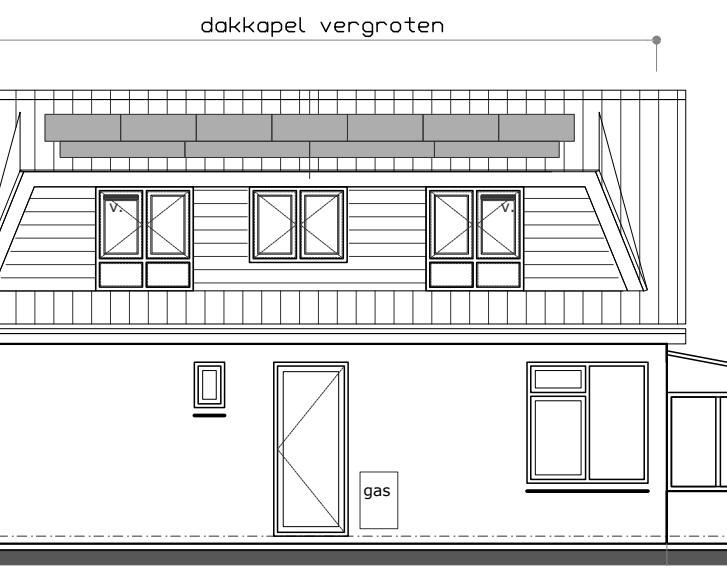
rechter zijgevel



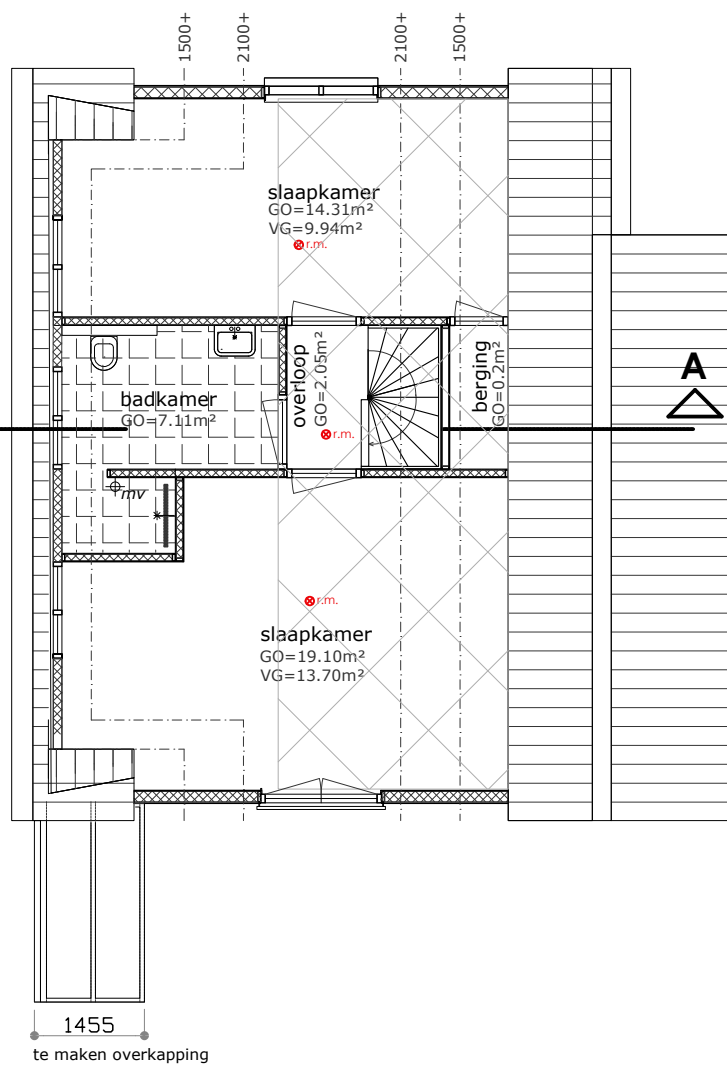
rechter zijgevel



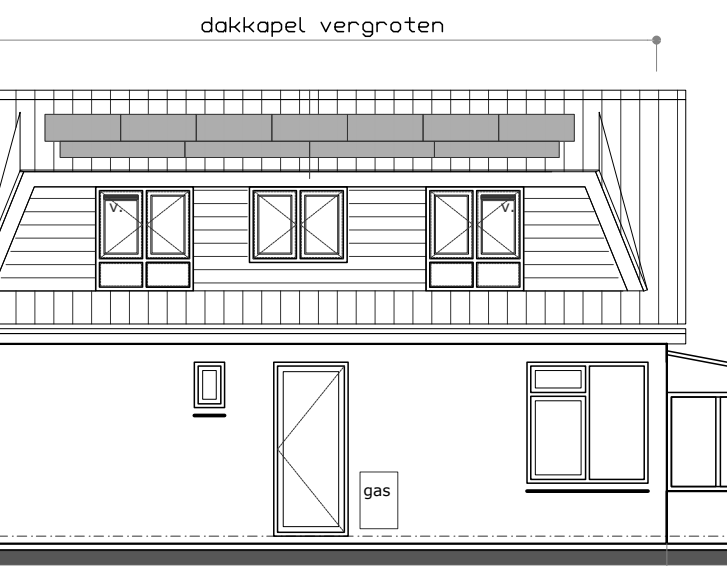
rechter zijgevel



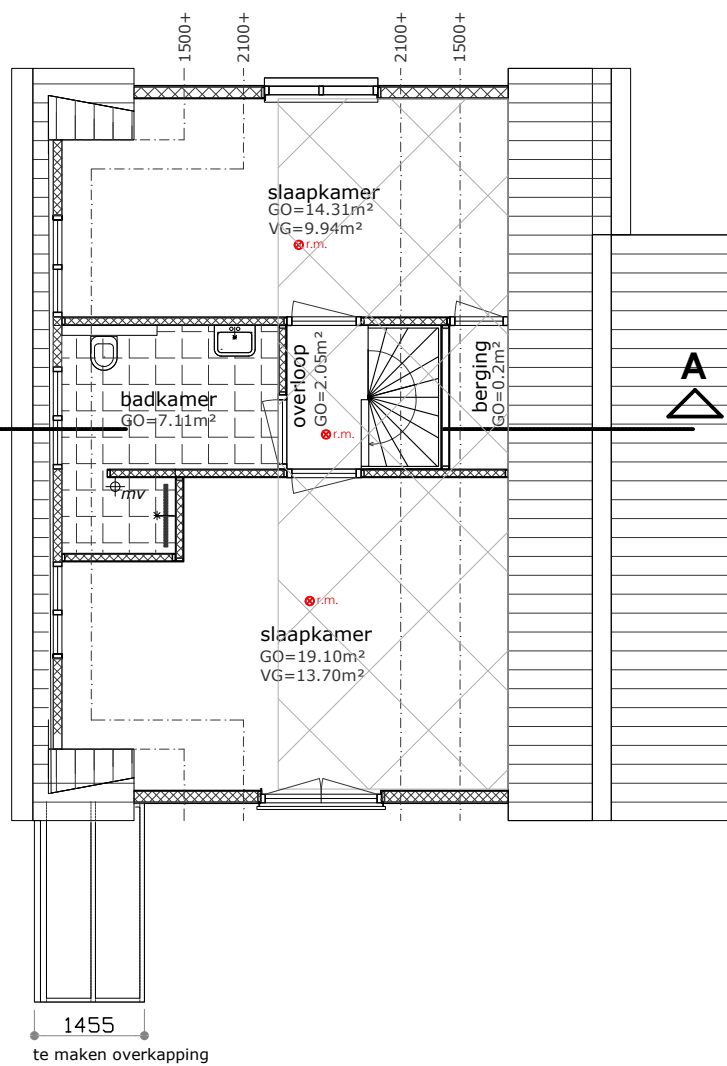
rechter zijgevel



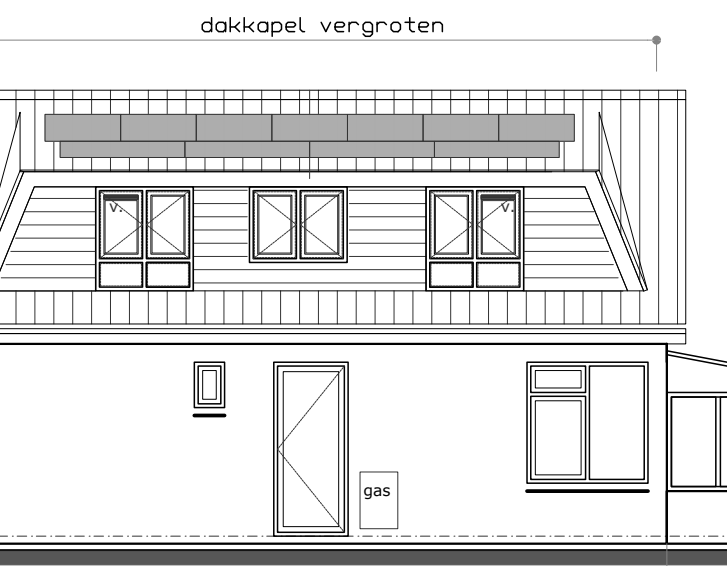
rechter zijgevel



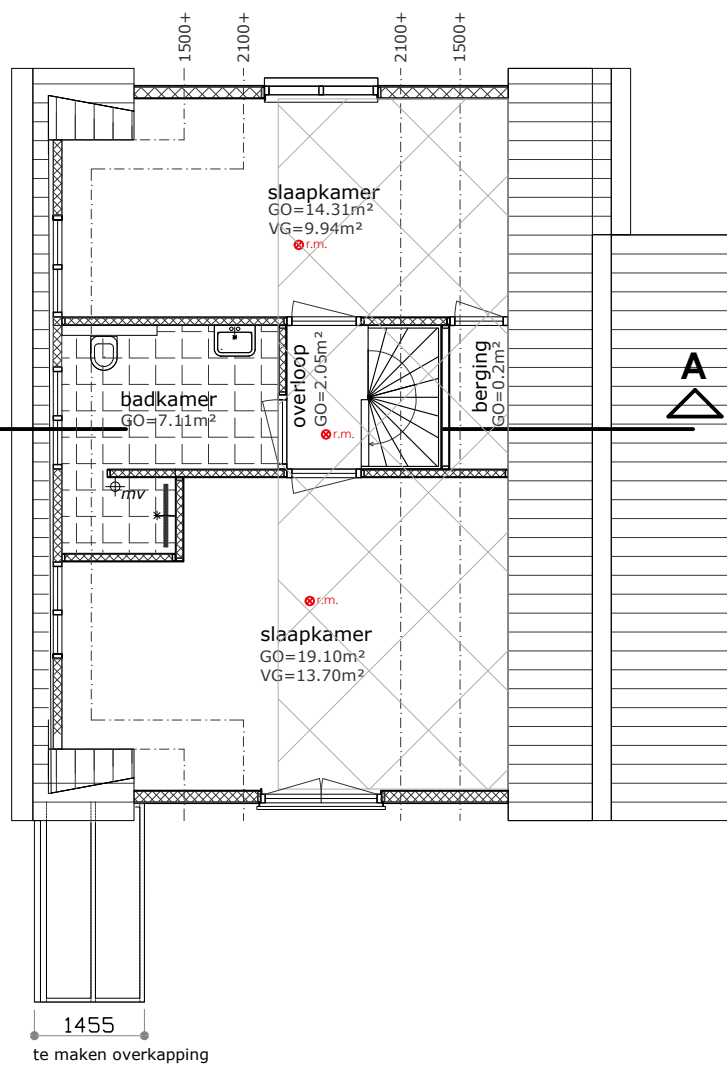
rechter zijgevel



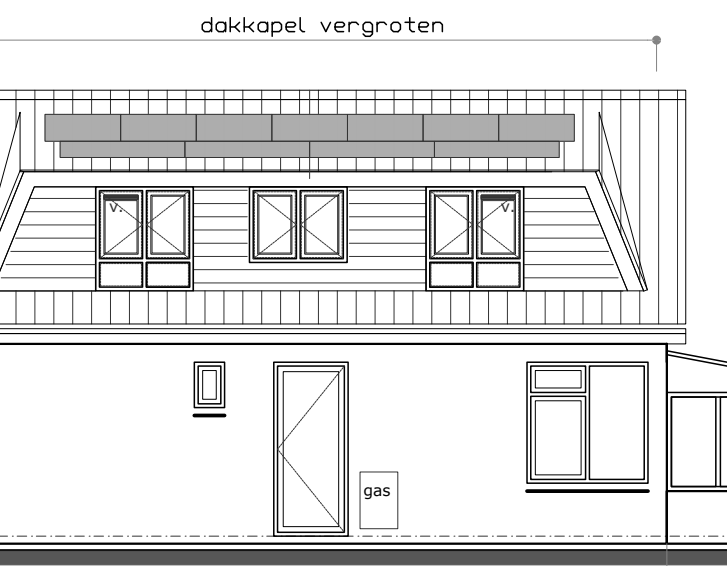
rechter zijgevel



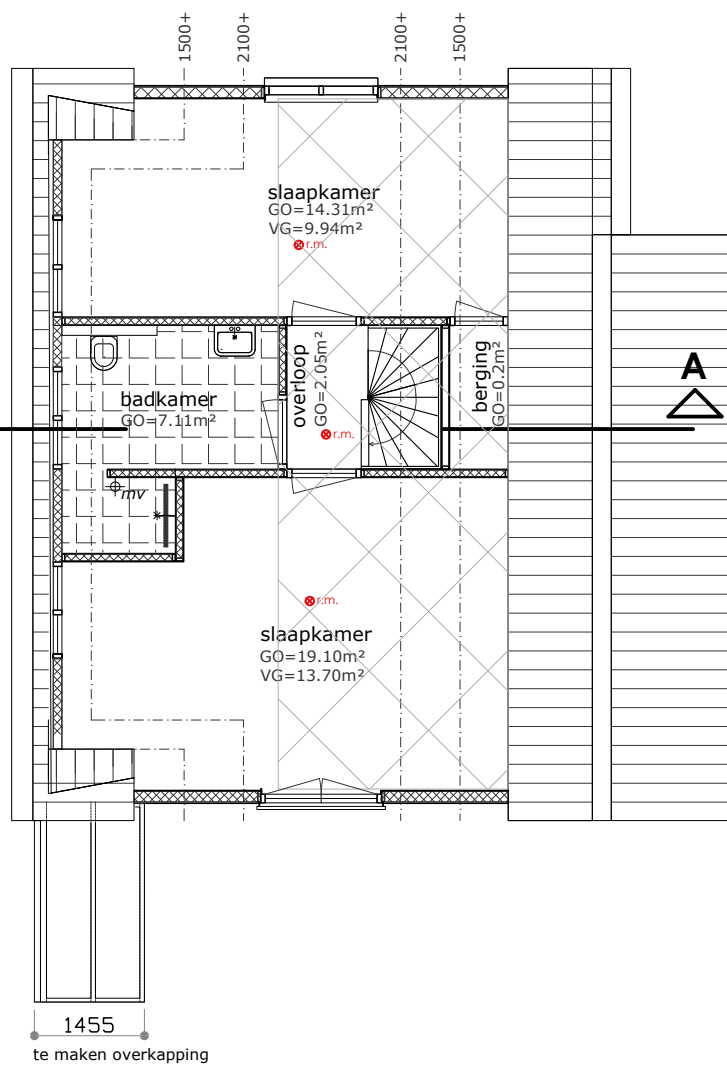
rechter zijgevel



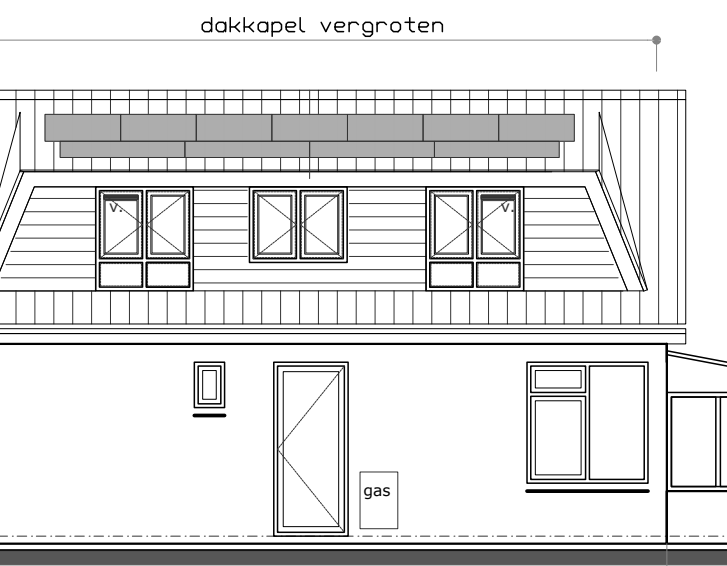
rechter zijgevel



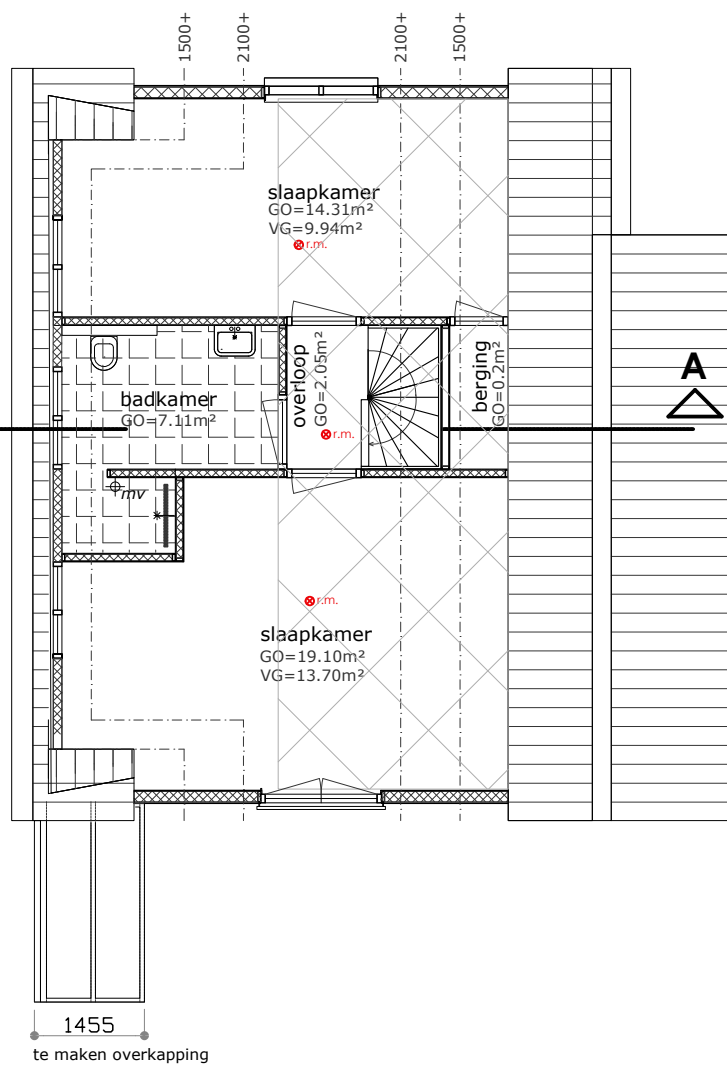
rechter zijgevel



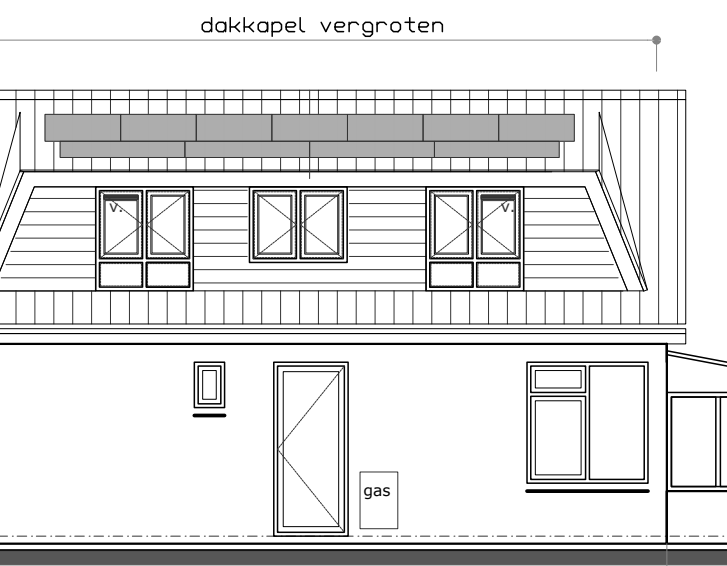
rechter zijgevel



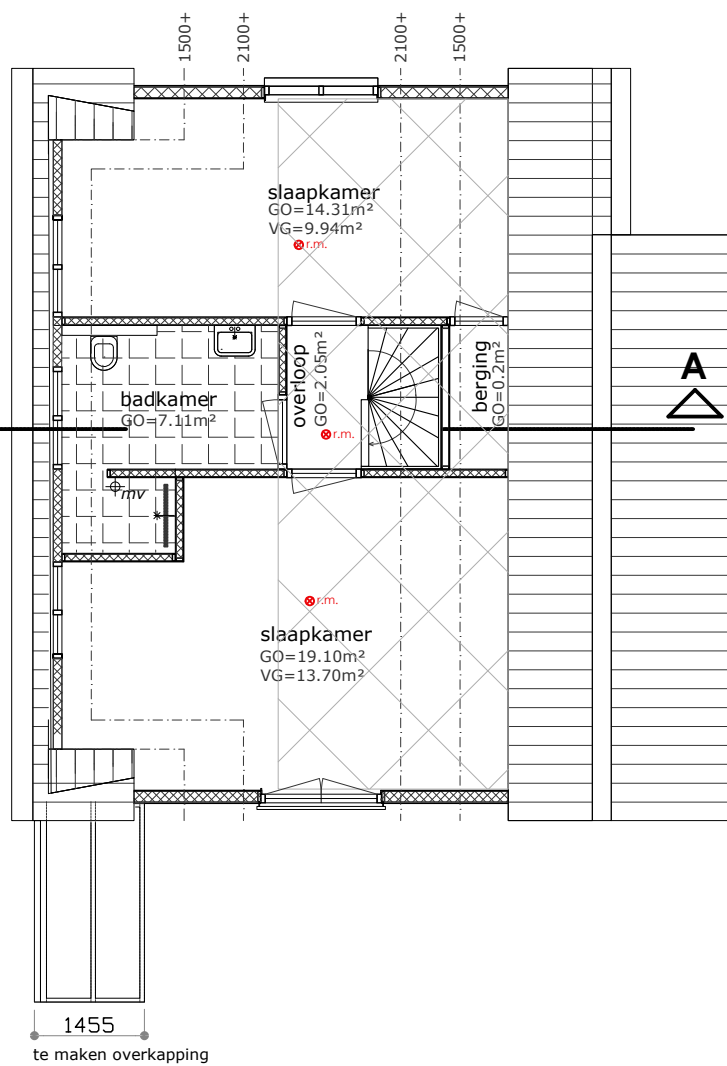
rechter zijgevel



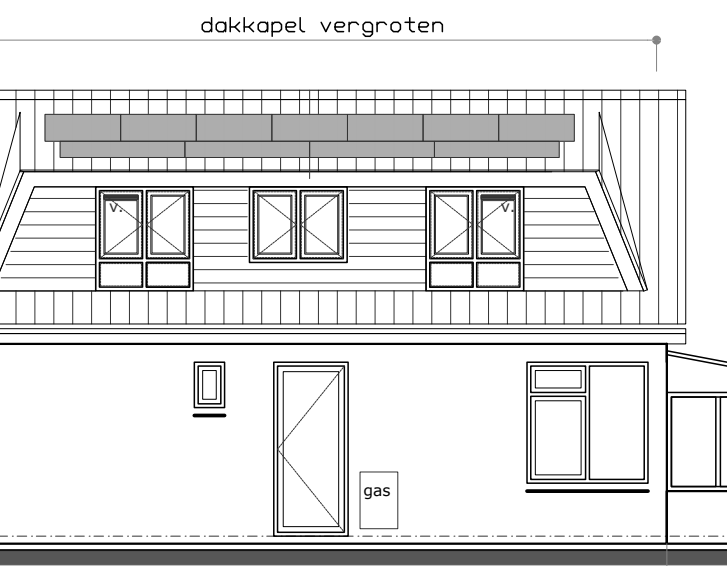
rechter zijgevel



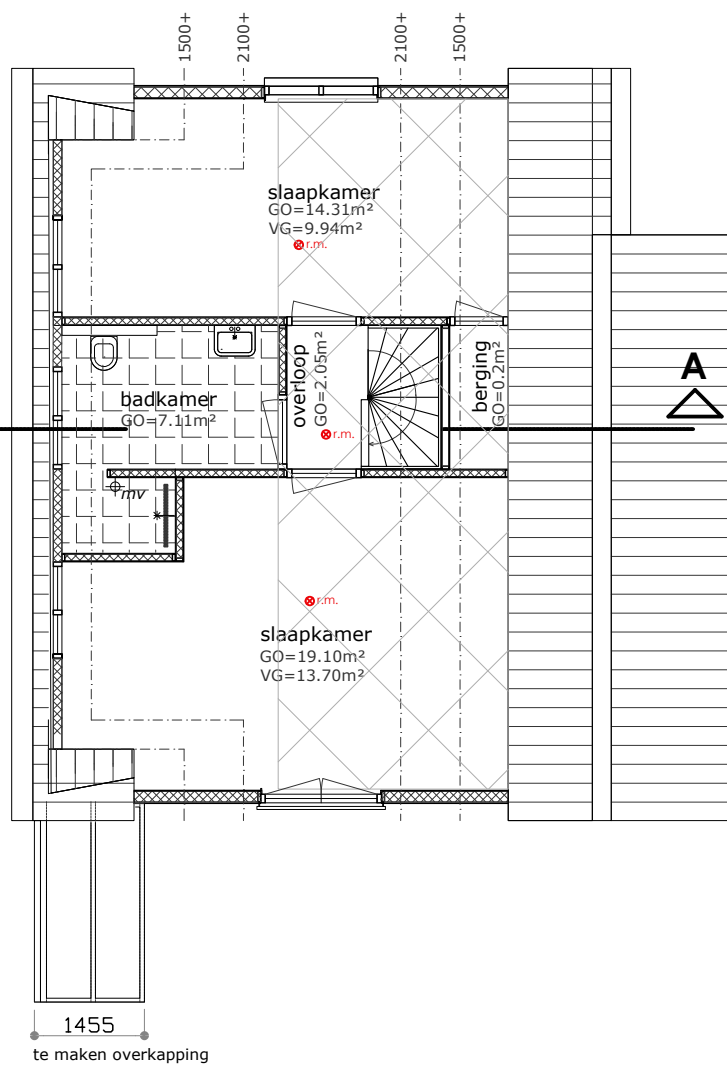
rechter zijgevel



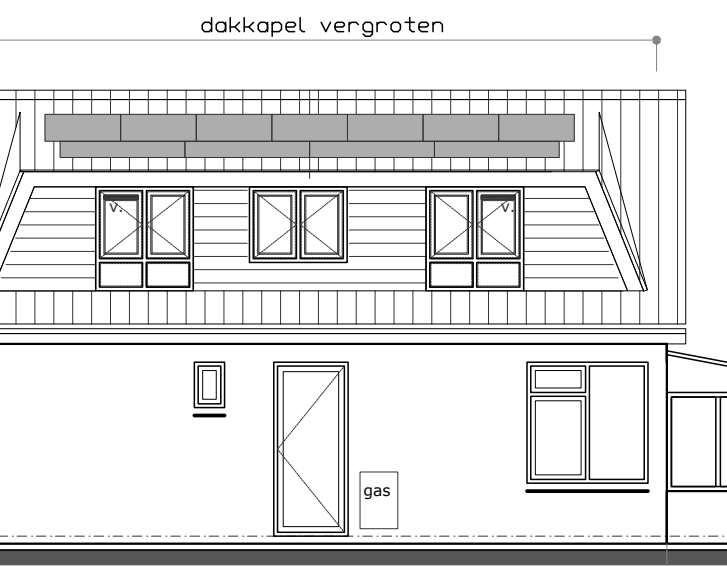
rechter zijgevel



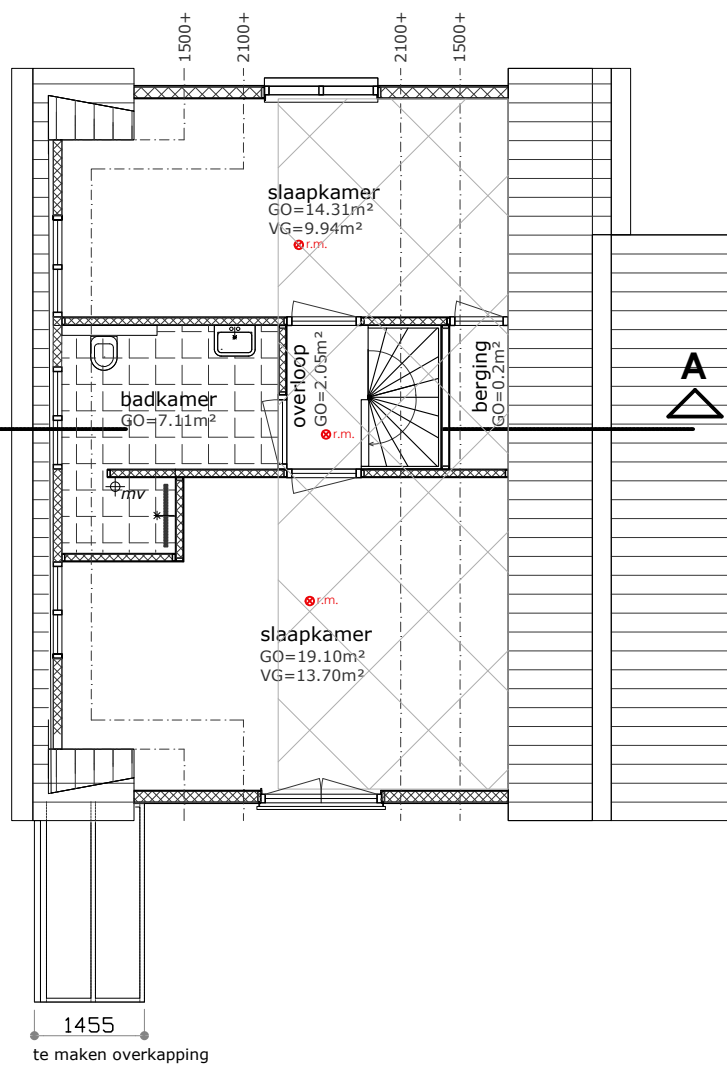
rechter zijgevel



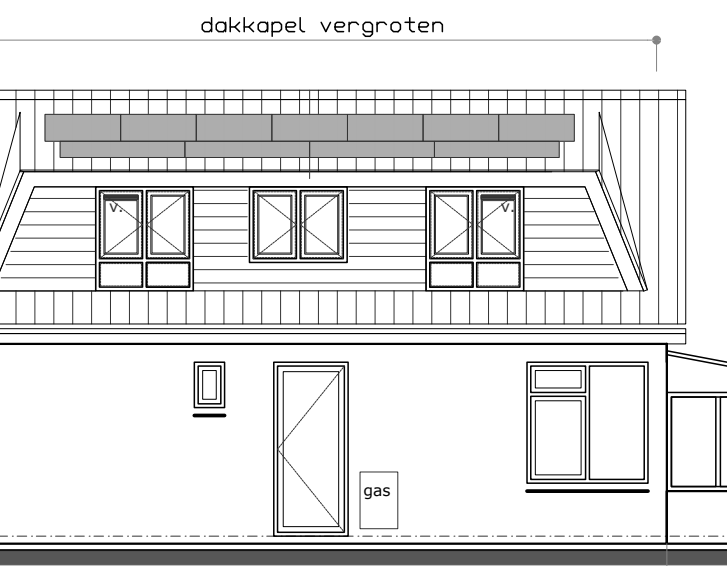
rechter zijgevel



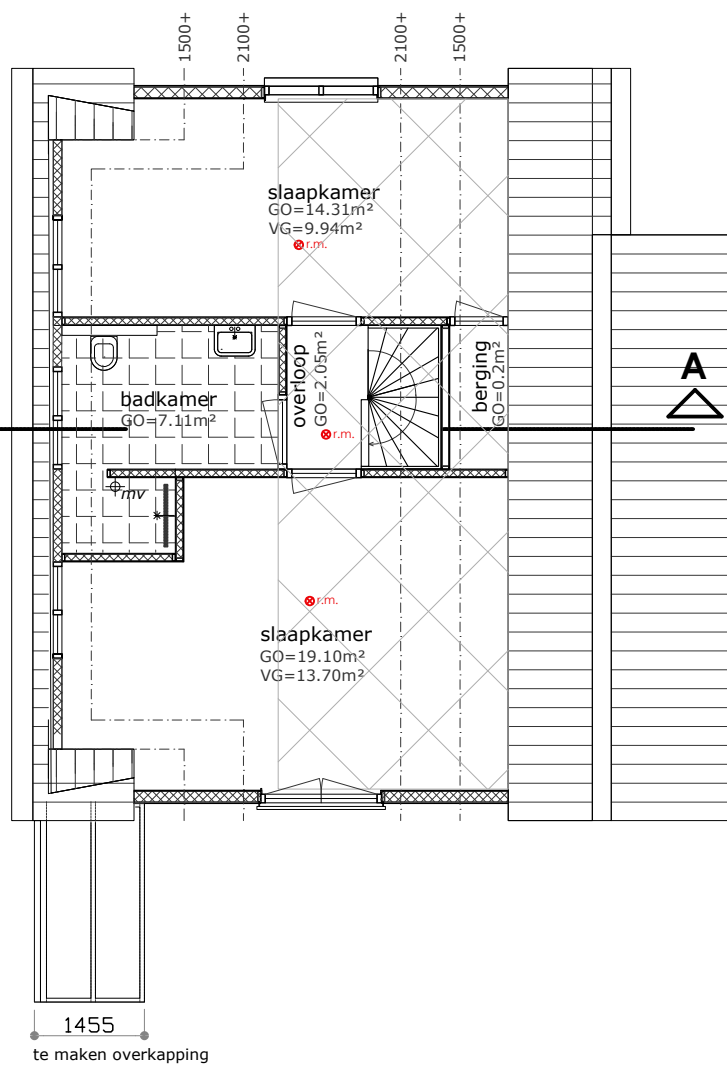
rechter zijgevel



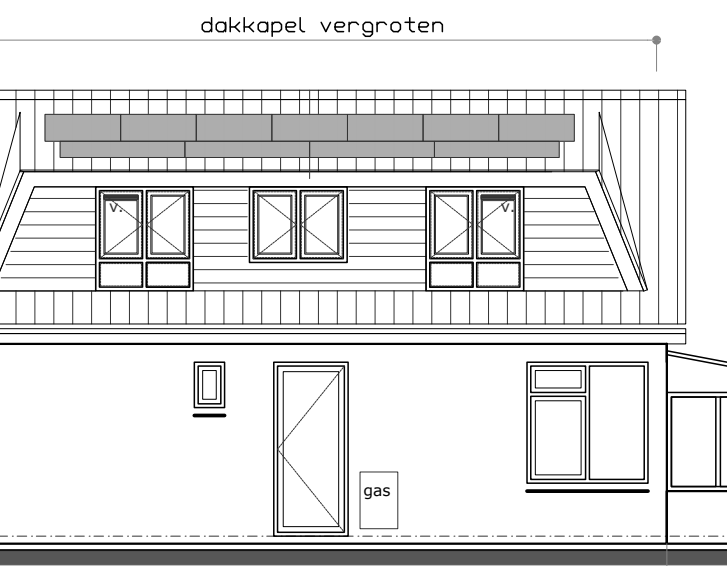
rechter zijgevel



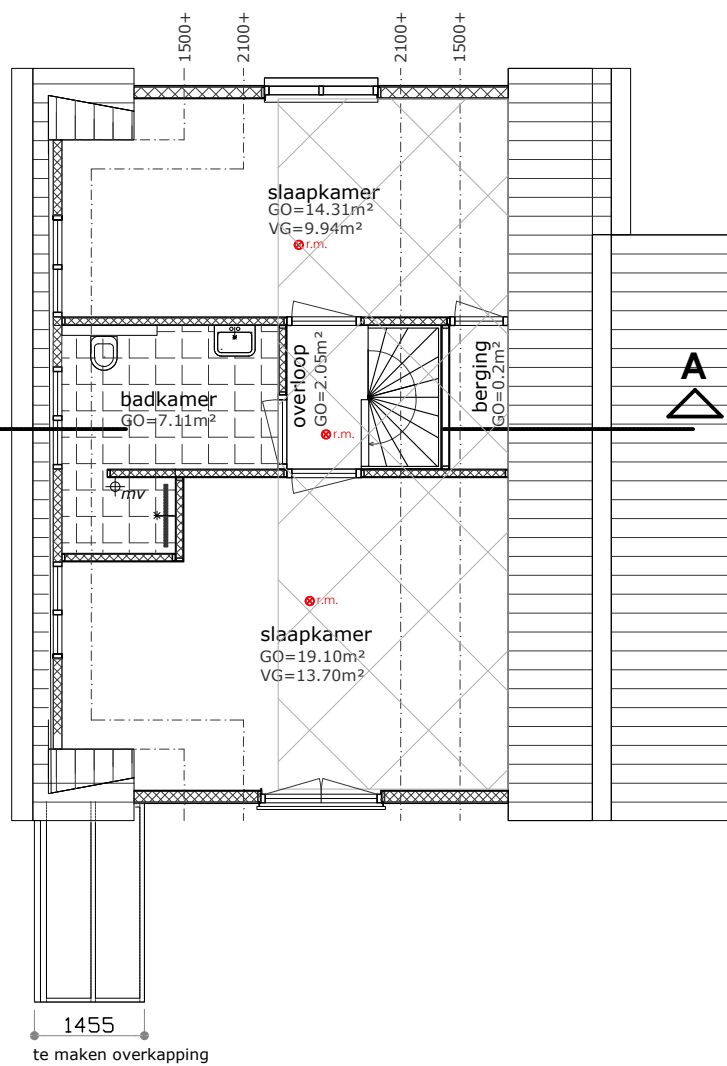
rechter zijgevel



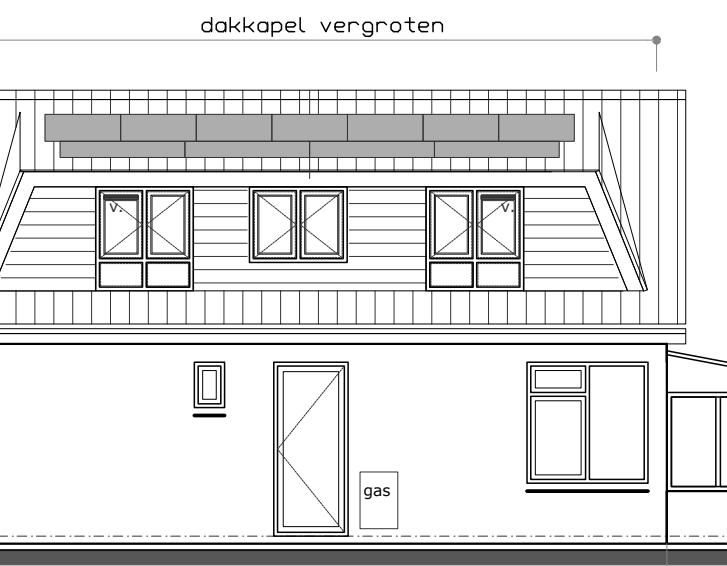
rechter zijgevel



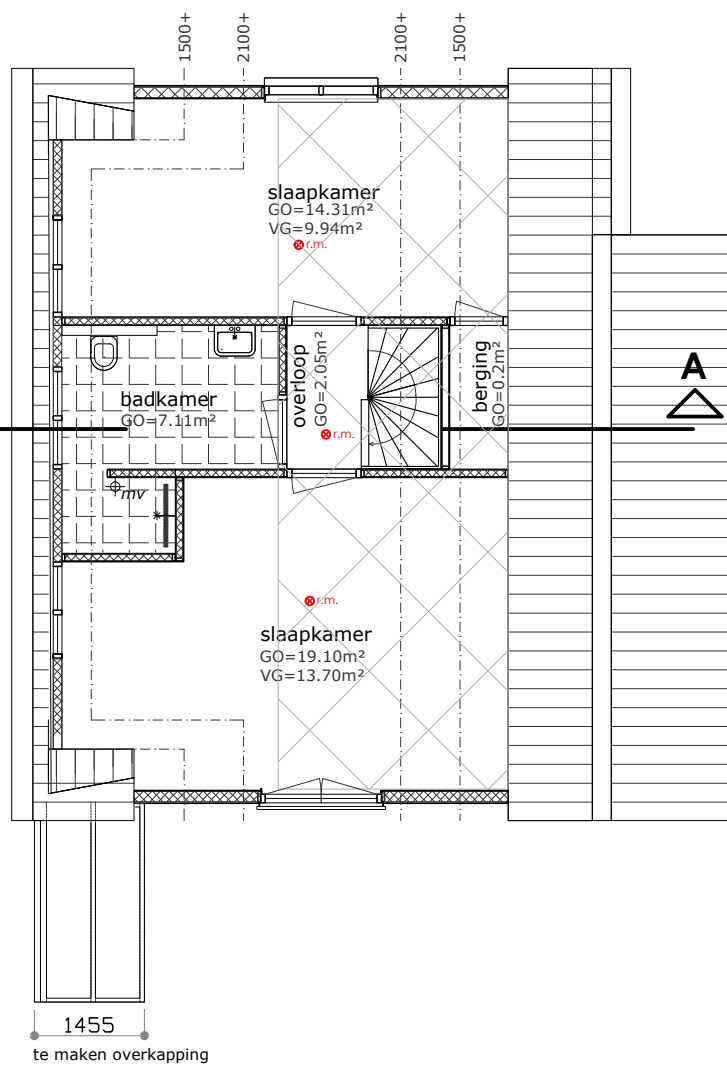
rechter zijgevel



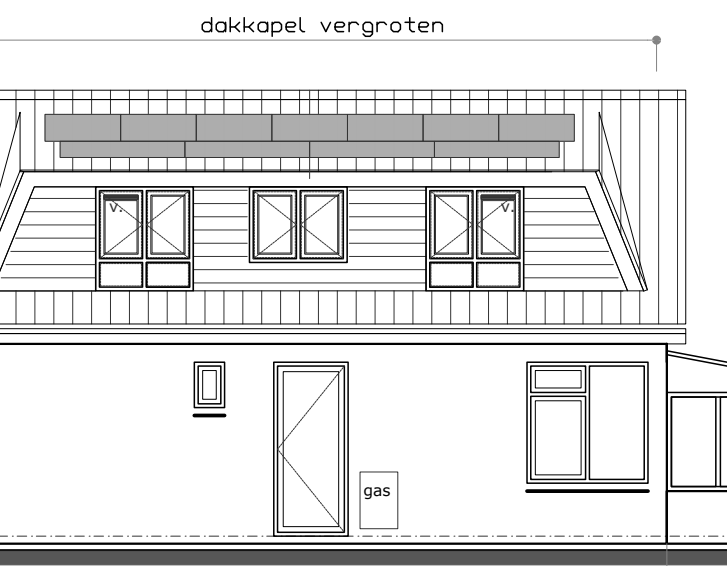
rechter zijgevel



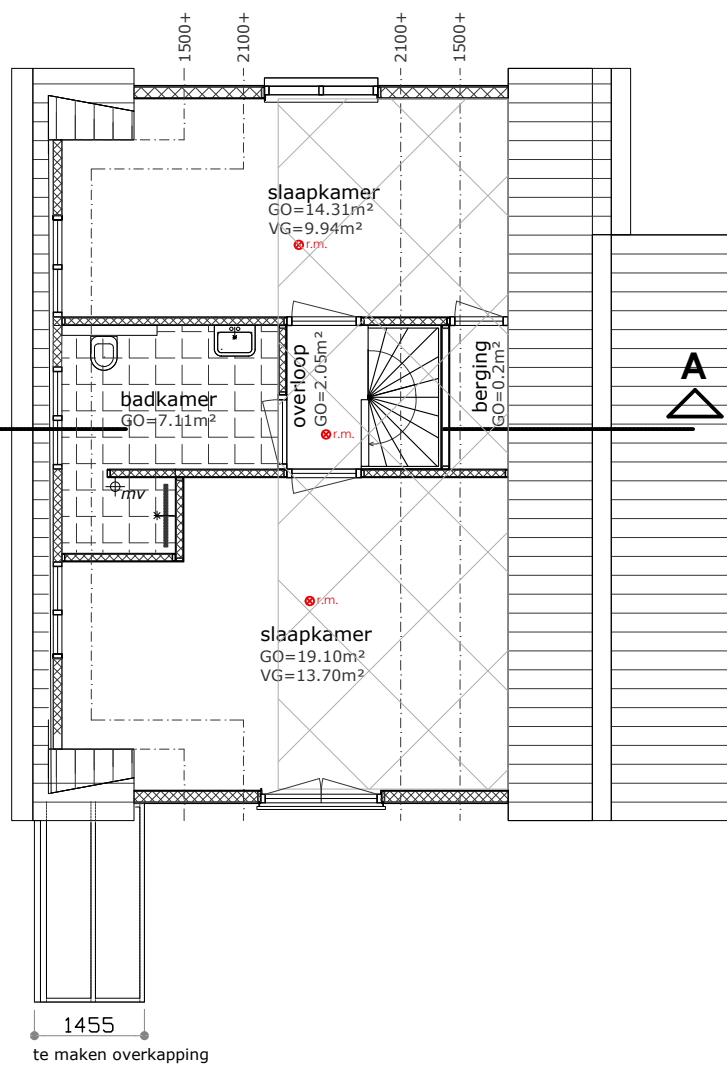
rechter zijgevel



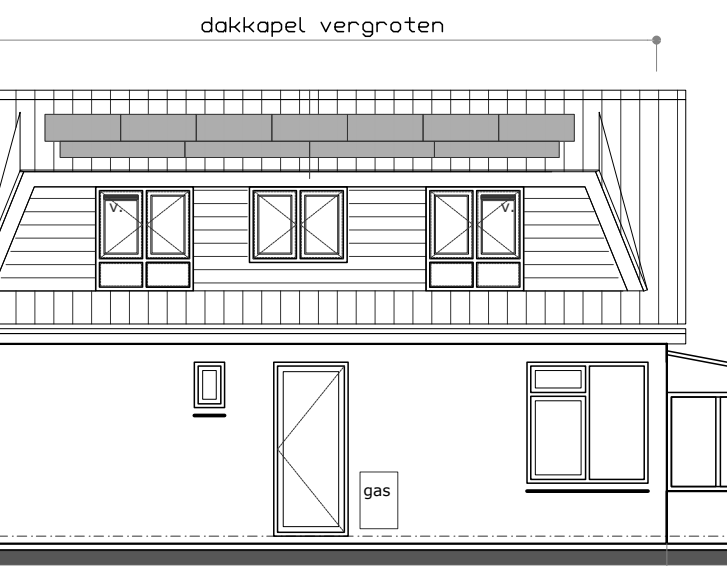
rechter zijgevel



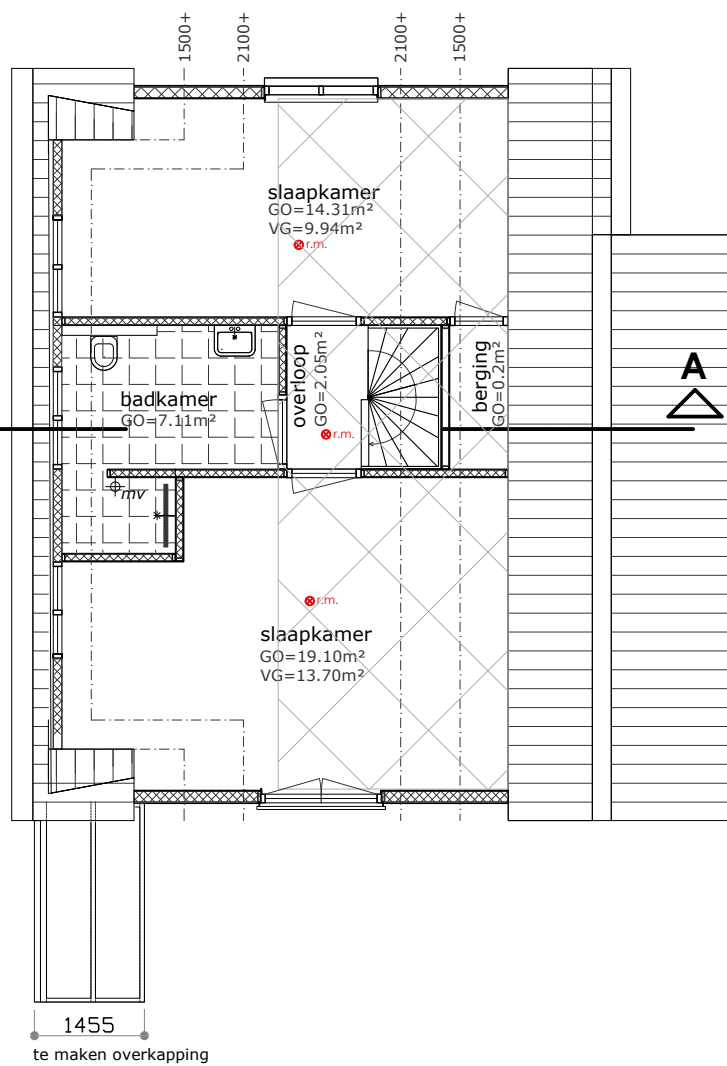
rechter zijgevel



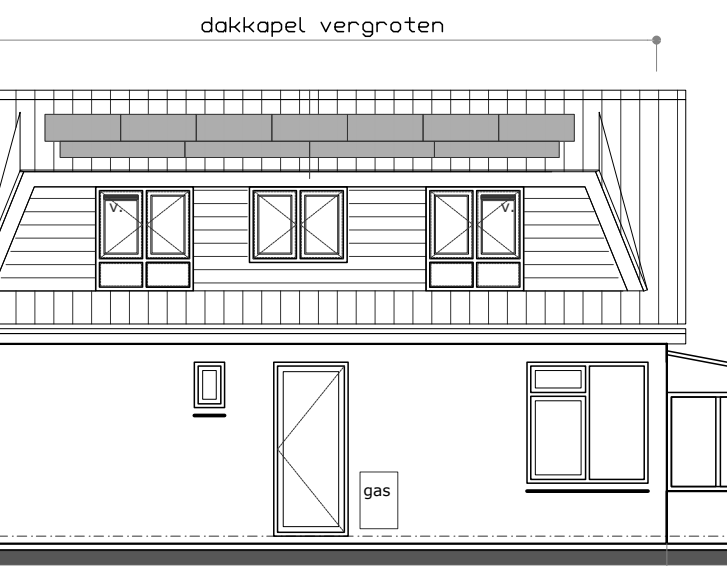
rechter zijgevel



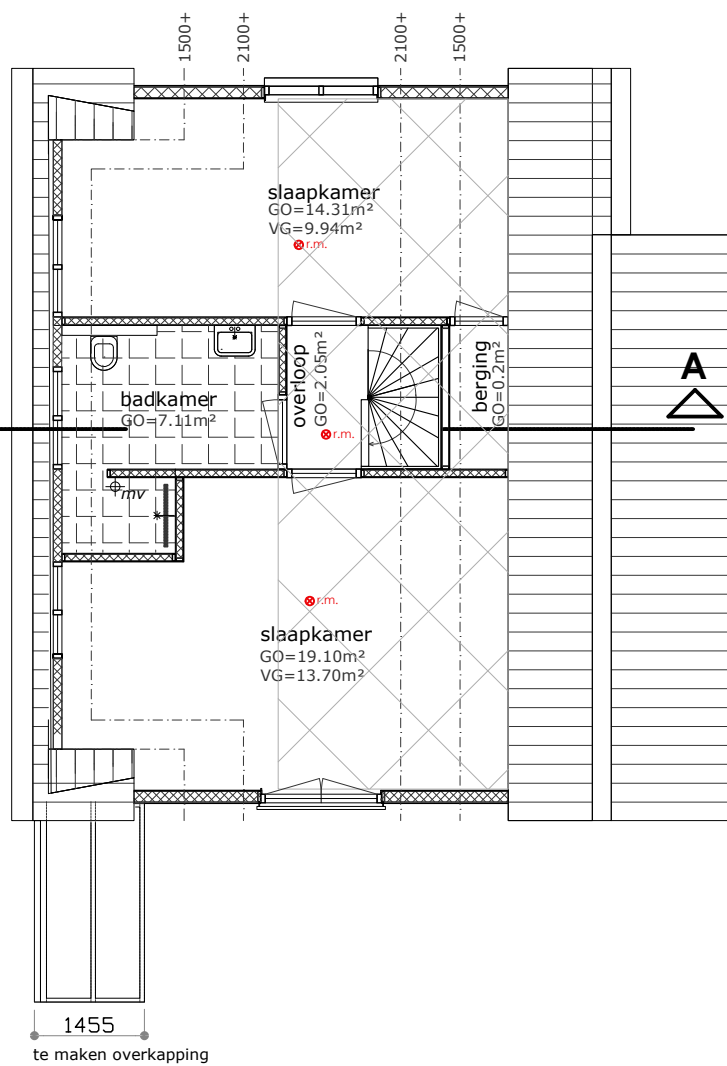
rechter zijgevel



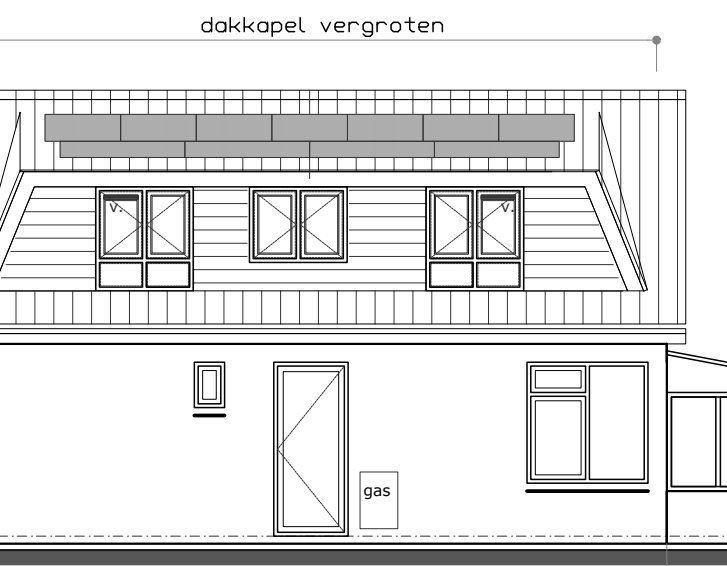
rechter zijgevel



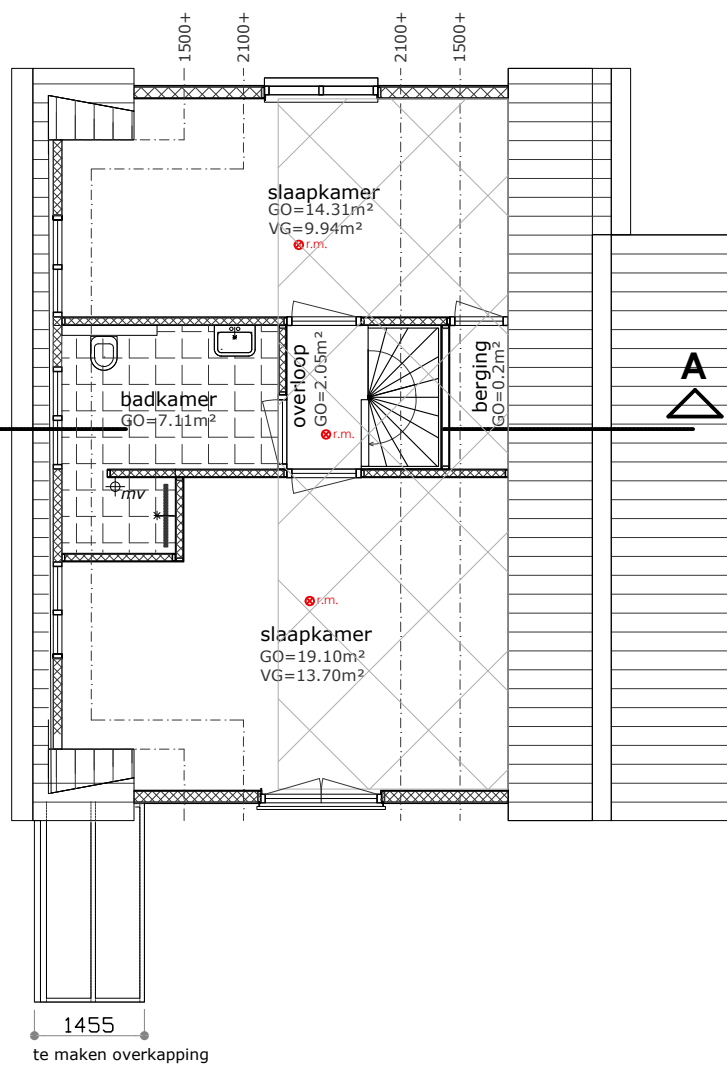
rechter zijgevel



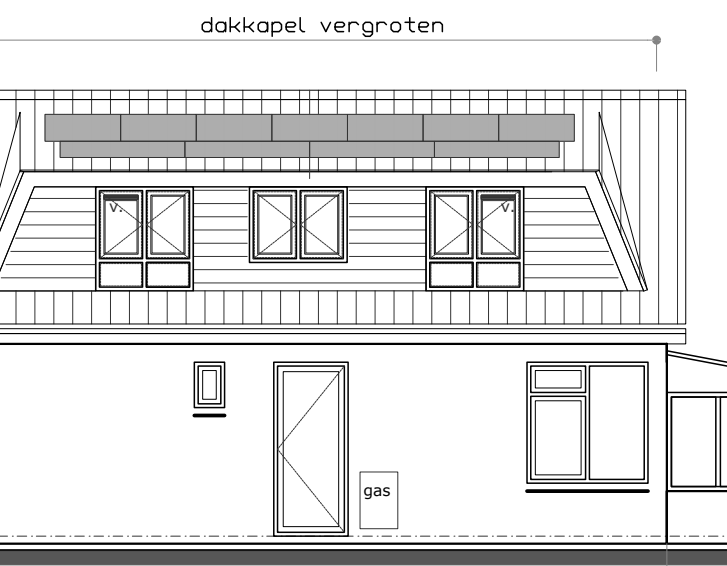
rechter zijgevel



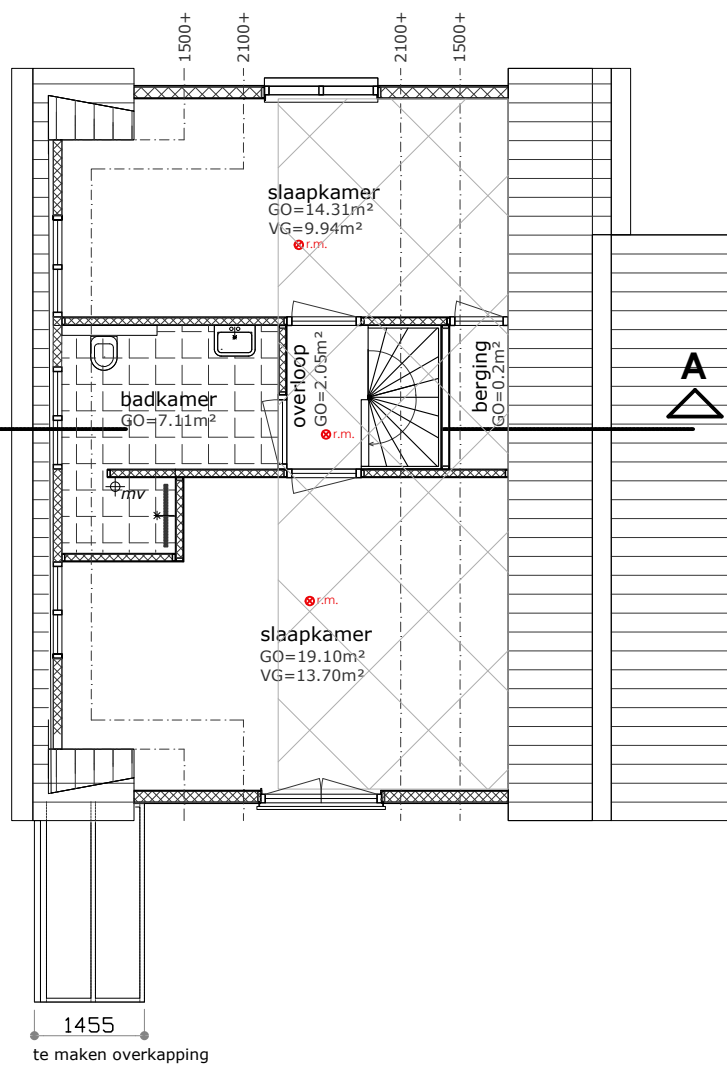
rechter zijgevel



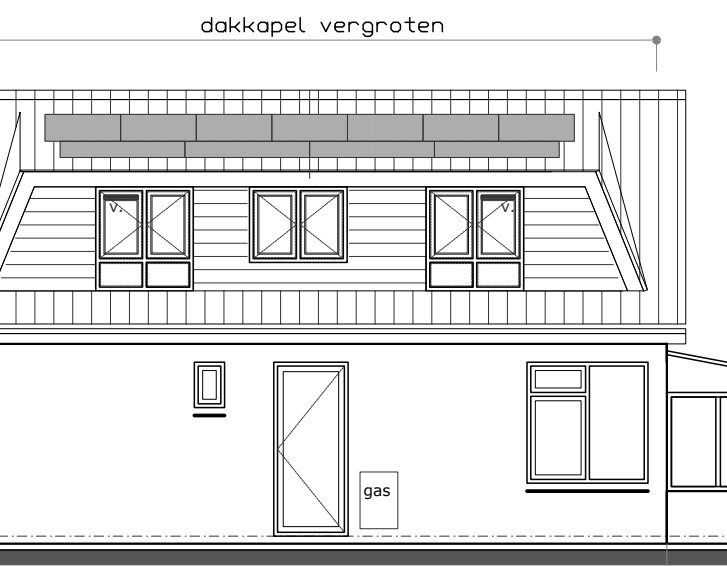
rechter zijgevel



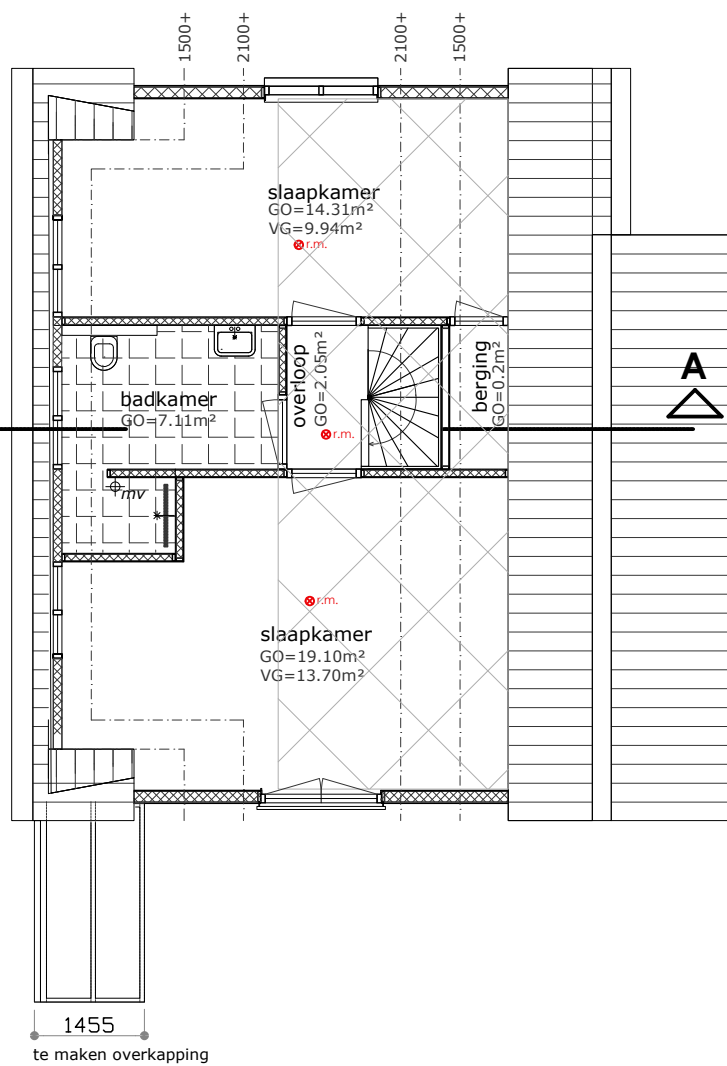
rechter zijgevel



rechter zijgevel



rechter zijgevel



rechter zijge