

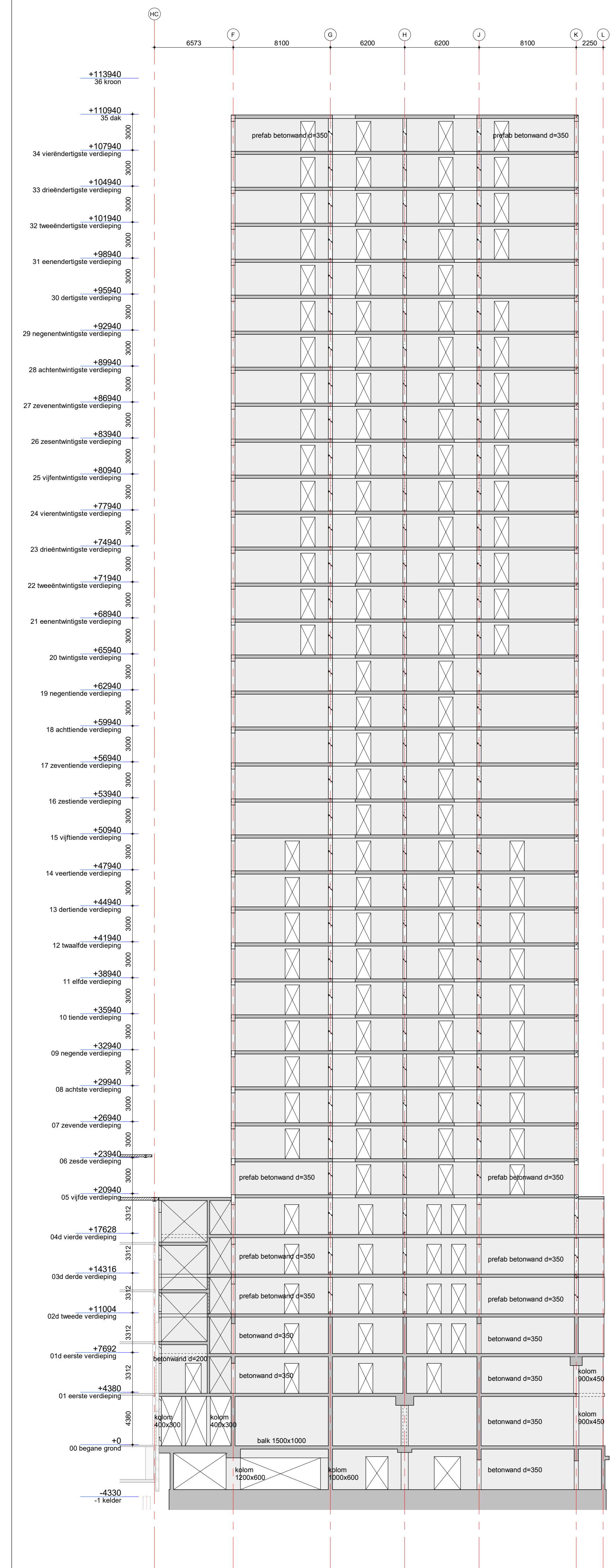
aanzicht as F

aanzicht as G

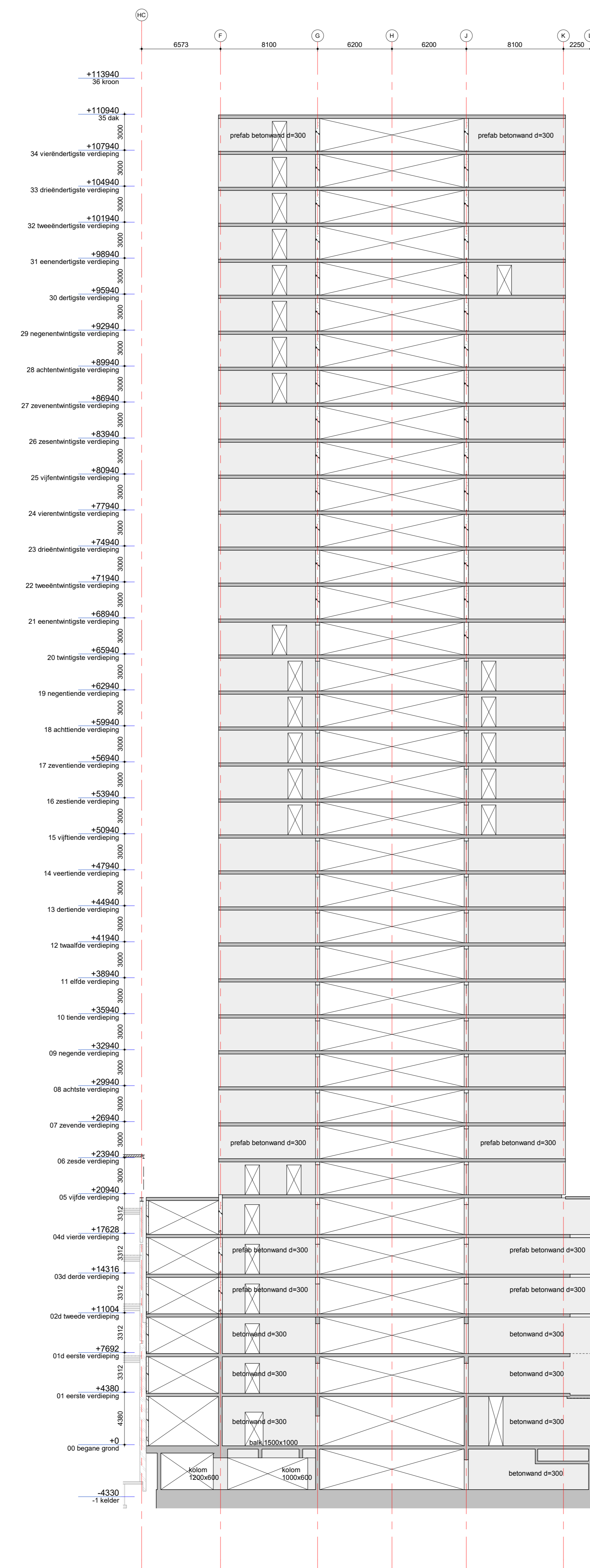
aanzicht as H

aanzicht as J

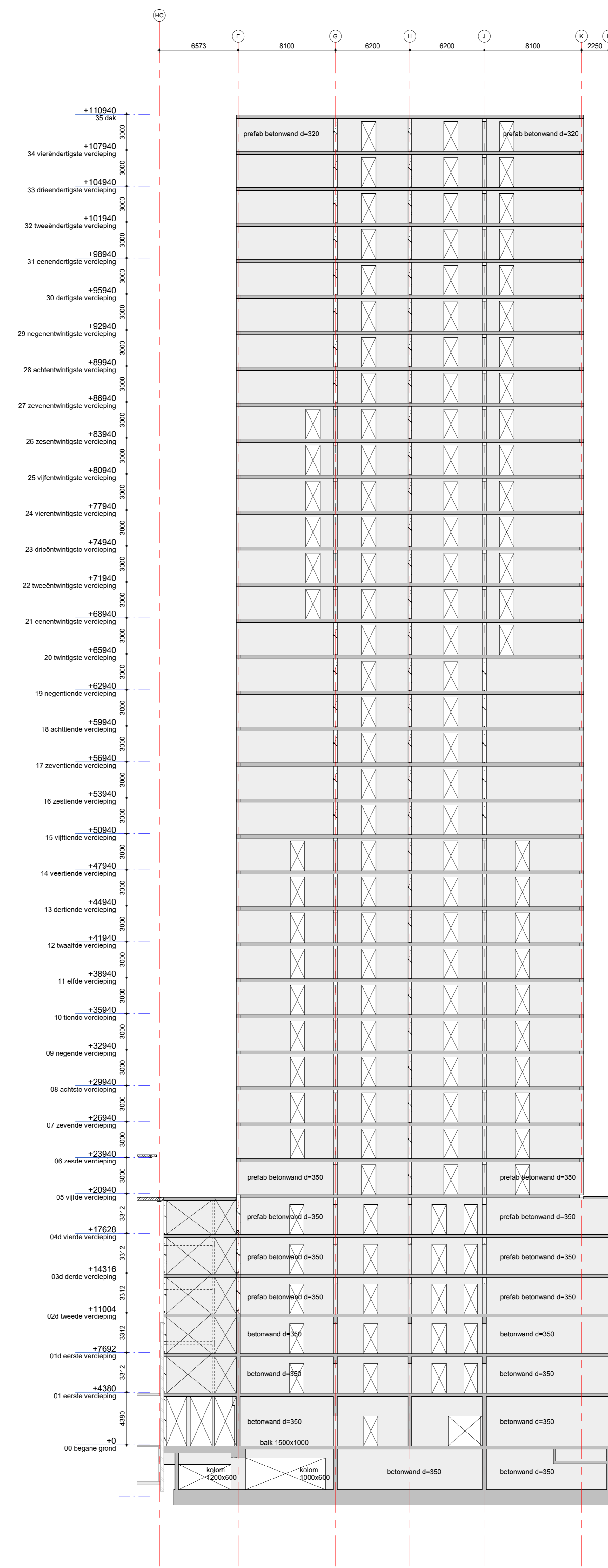
aanzicht as K



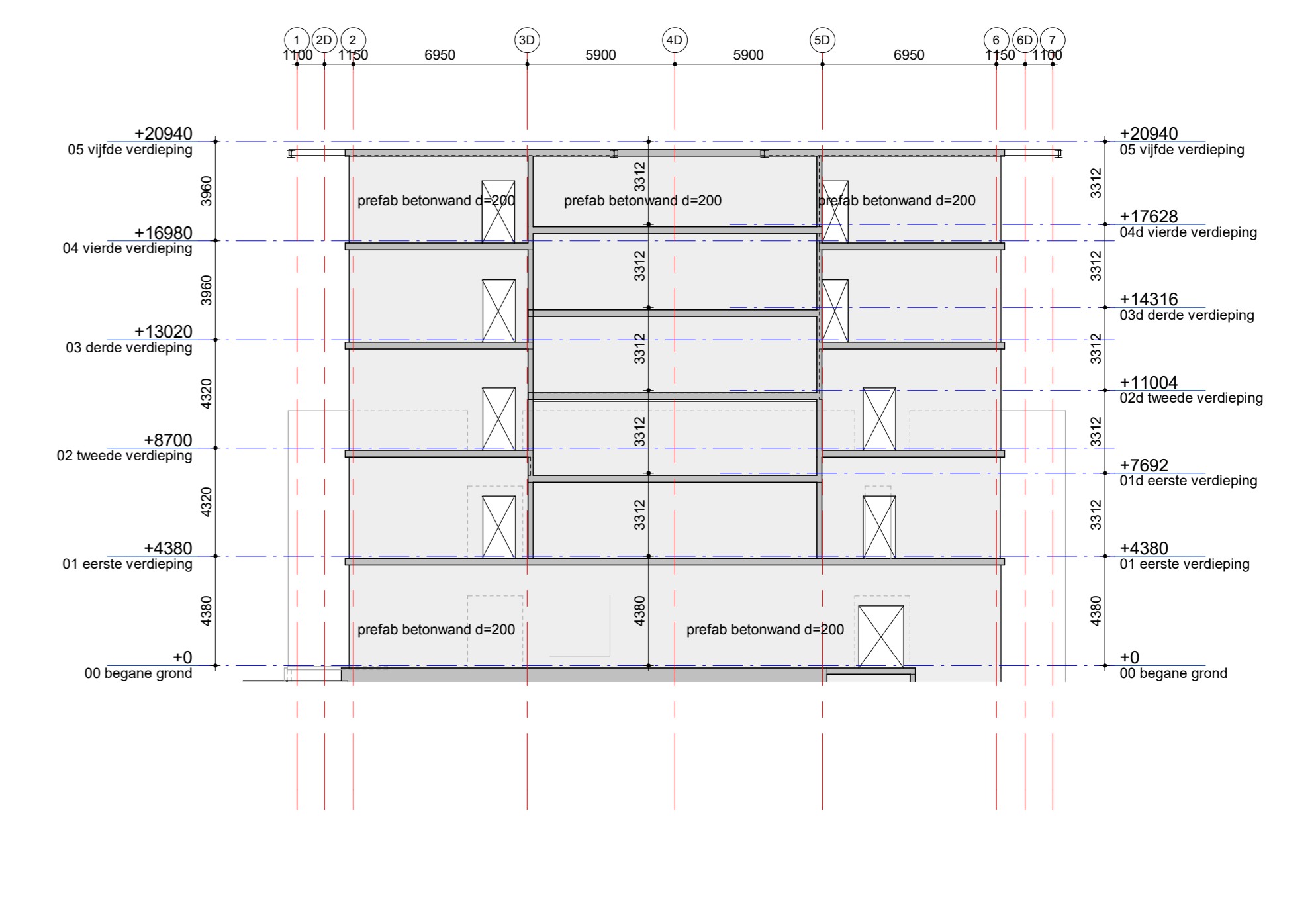
aanzicht as 3D



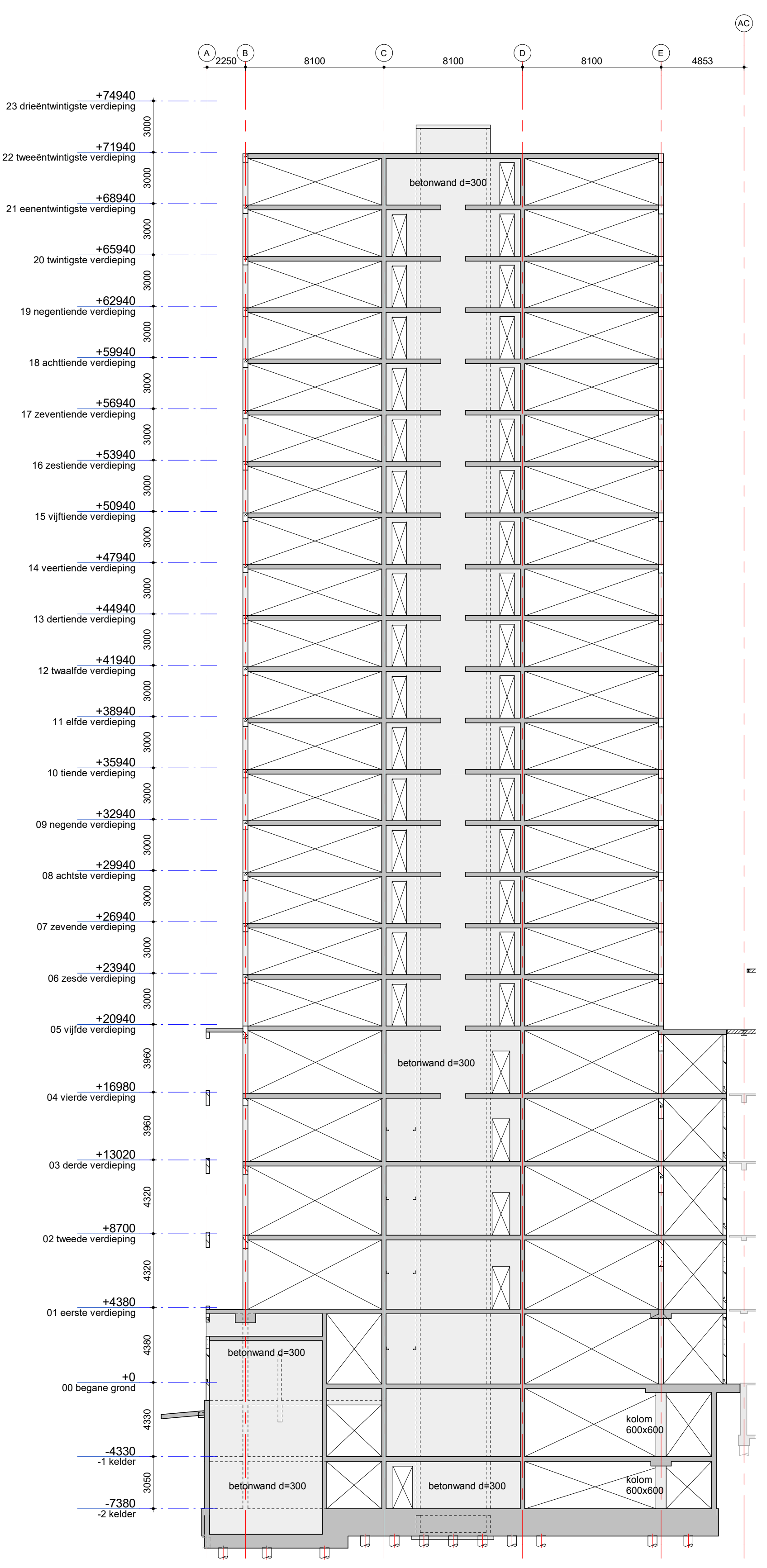
aanzicht as 4D



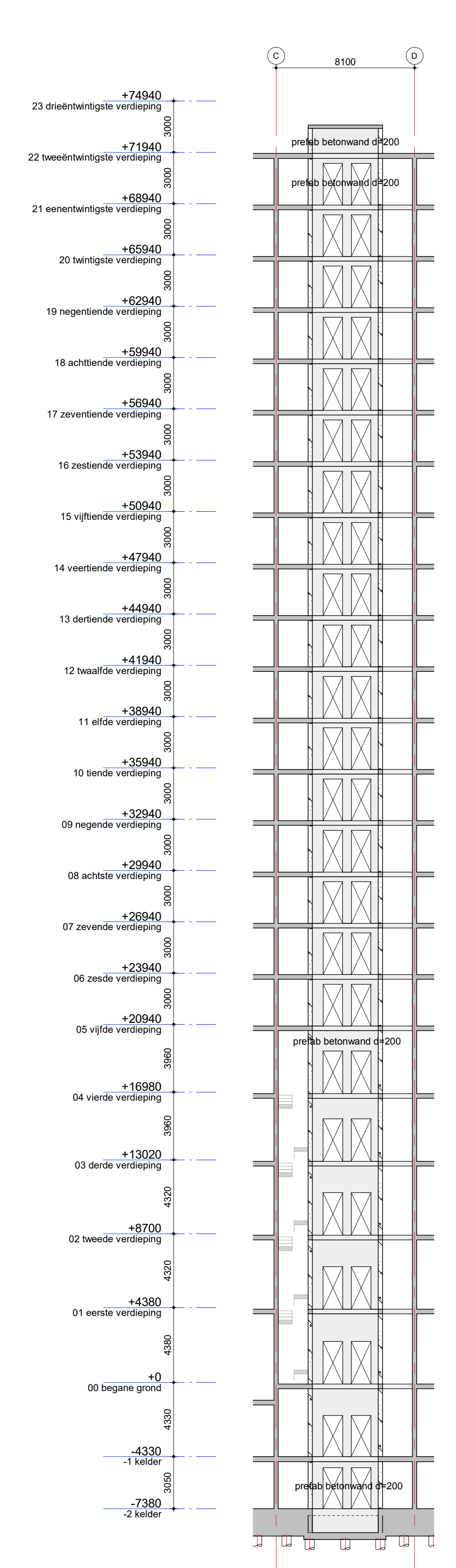
aanzicht as 5D



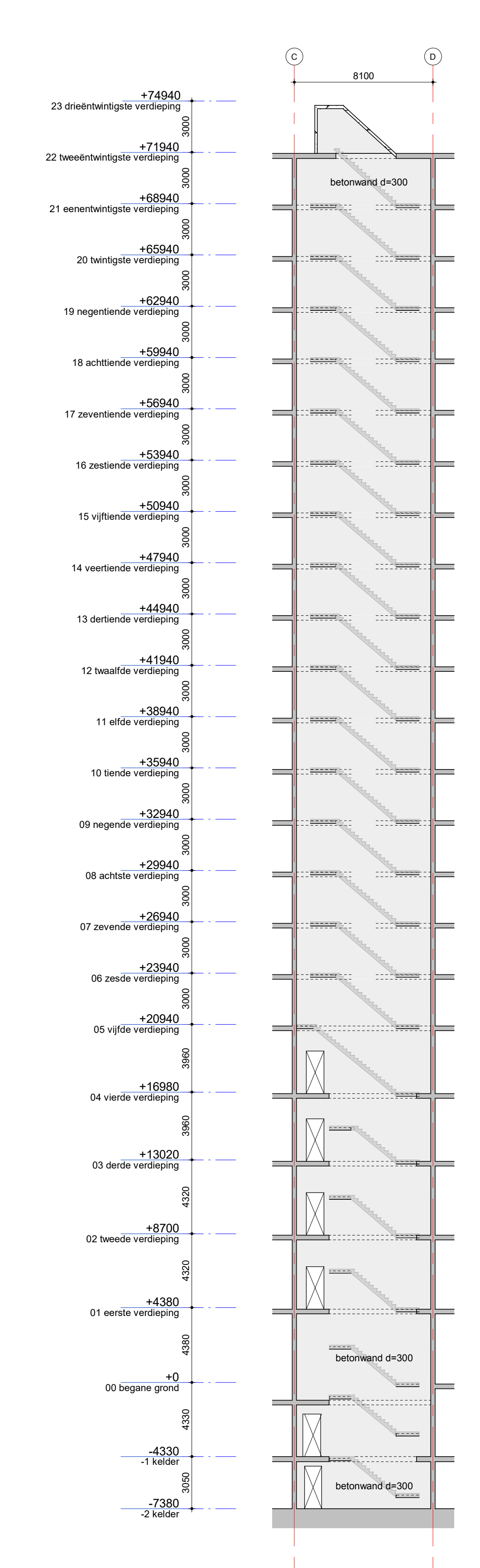
as HC
schaal 1 : 200



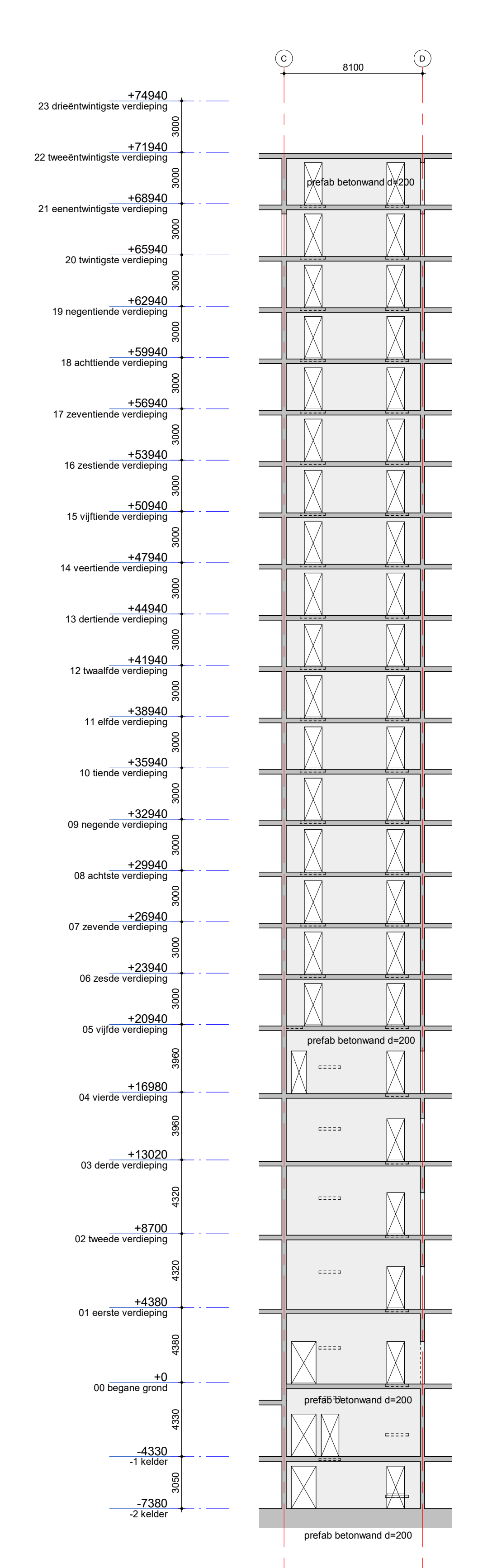
3B
schaal 1:200



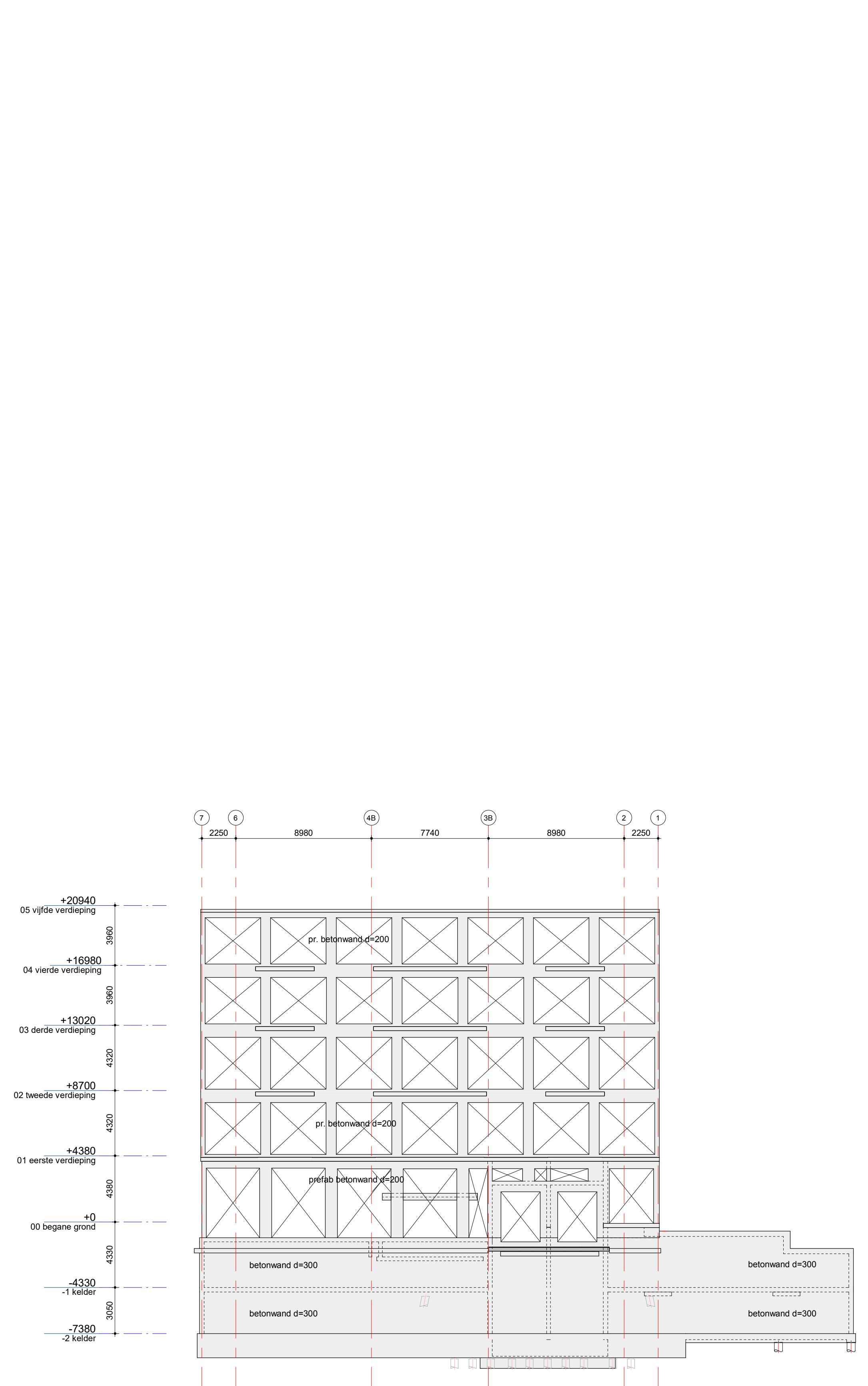
wand //as 3B
schaal 1:200



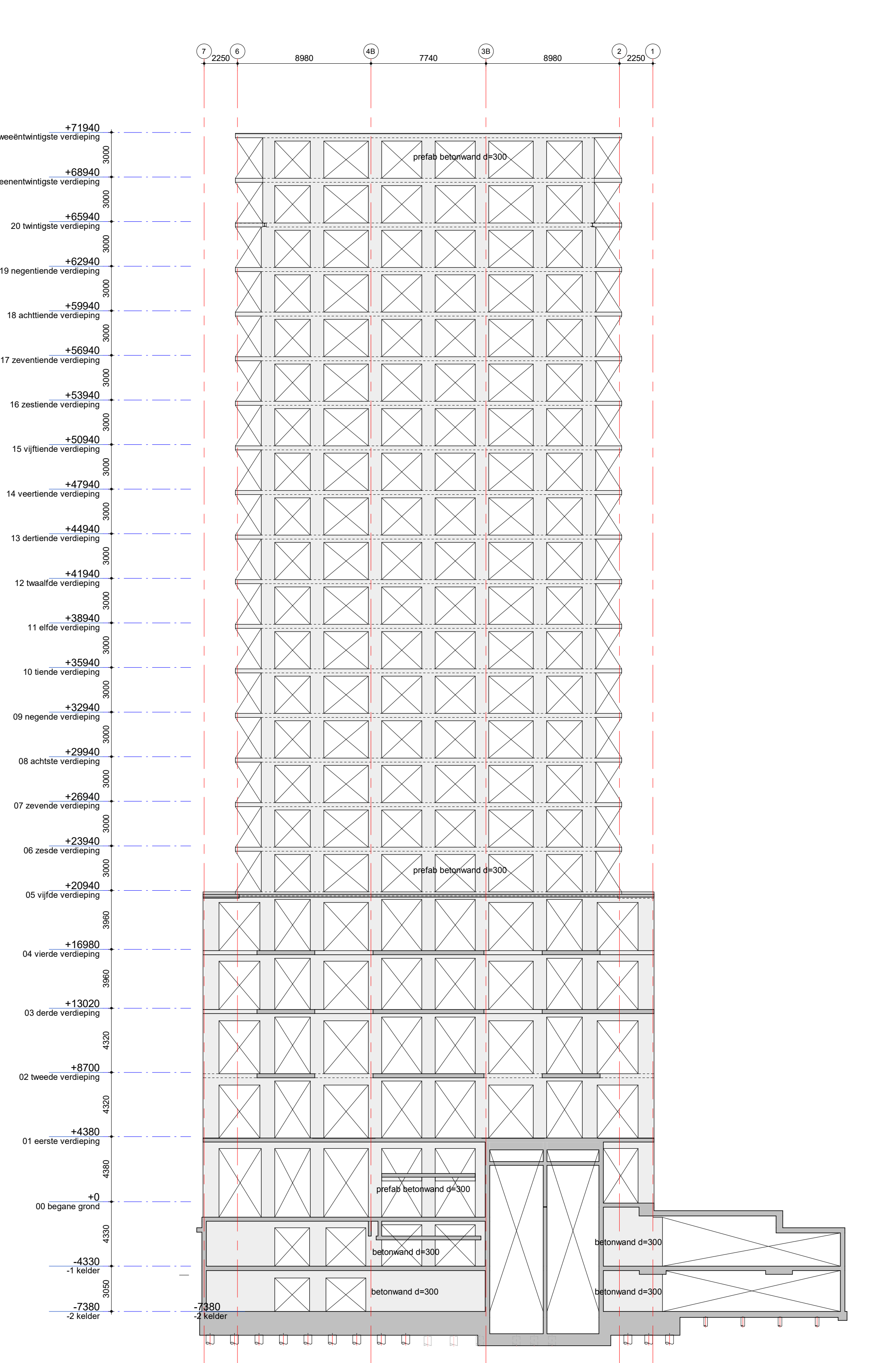
4B
schaal 1:200



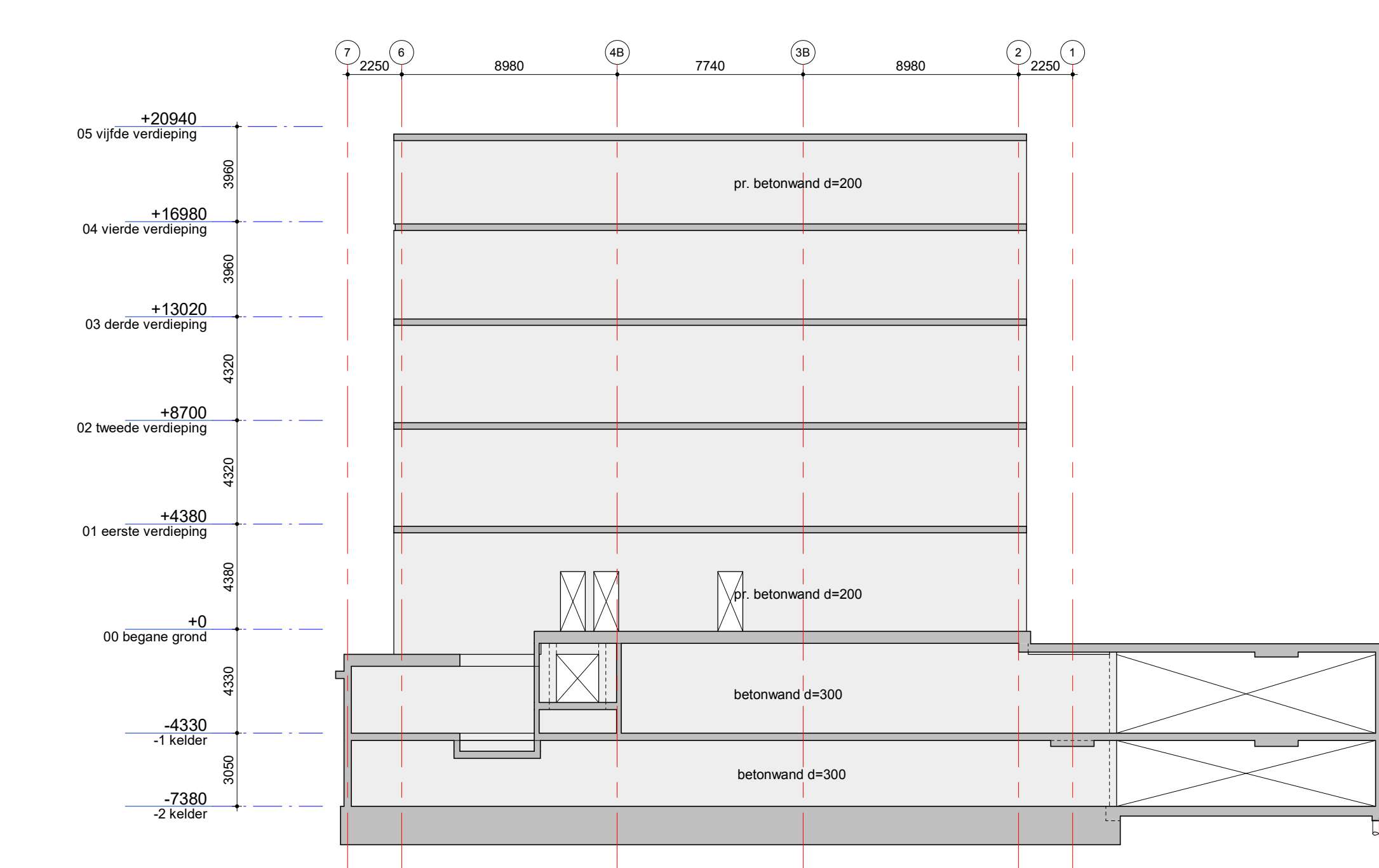
wand //as 4B
schaal 1:200



A
schaal 1:200



B
schaal 1:200



AC
schaal 1:200

