

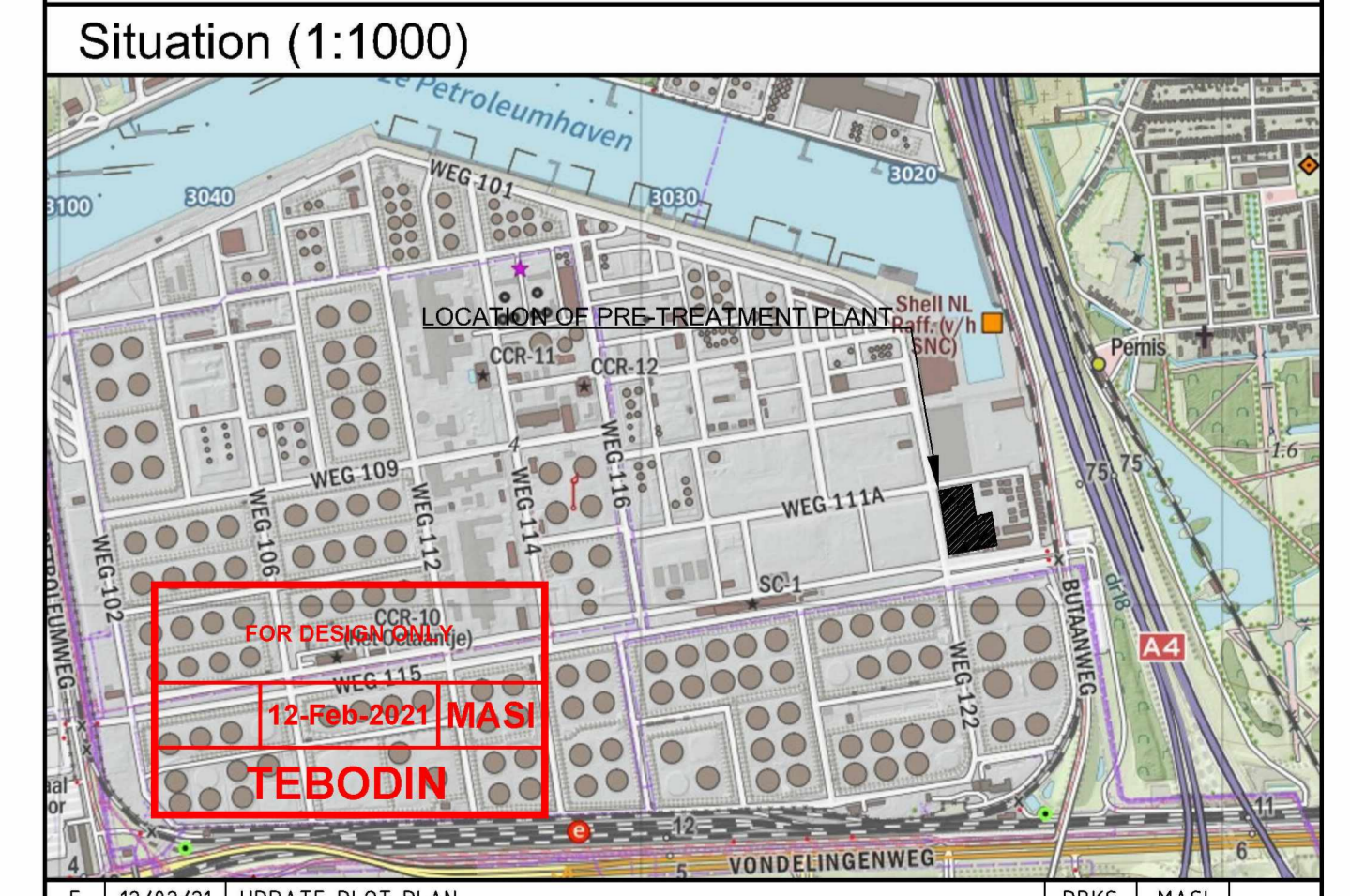
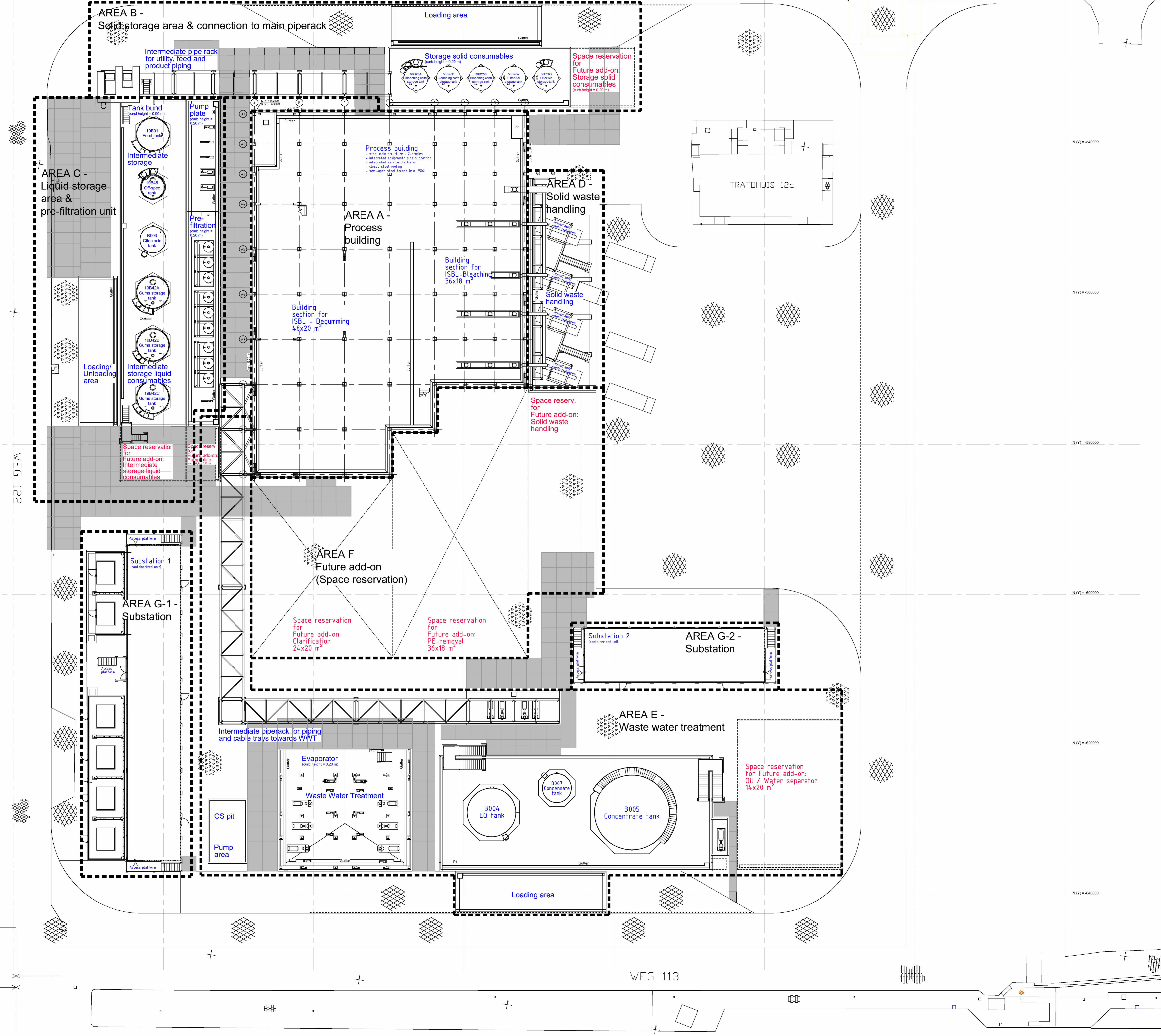
General remarks

- Grade level = 0.000 ± 1.100+N.A.P. (general soil elevation)
- All dimensions in mm, unless otherwise indicated
- Levels in millimeters with respect to level 0, unless otherwise indicated
- All dimensions must be checked at site
- It is not allowed to measure from this drawing

= Revision
 = Hold
 = Revision indication
 = Dimensioning not on scale
 = Dimensioning to be checked on site

Project coordinates

	Description	Value (mm)	RD Coordinate/ NAP reference	Additional remarks
Model Zero Point (Point 96)	Plant Coordinate X	0	84568,39 m	
	Plant Coordinate Y	0	433571,75 m	
	Plant Coordinate Z	0	4,1 m + N.A.P.	To be verified with site survey
Project Reference Point (Point 22)	Plant Coordinate X	474634	85137,48 m	
	Plant Coordinate Y	-652401	433007,81 m	
	Plant Coordinate Z	0	4,1 m + N.A.P.	To be verified with site survey



REV.	DATE	DESCRIPTION	DRAWN	CHECKED	APPROVED
E	12/02/21	UPDATE PLOT PLAN	RBKS	MASI	
D	26/11/20	UPDATE PLOT PLAN REGARDING WWT	MASI	RKNL	WBUS
C	14/10/20	UPDATES REG. PLOT LOCATION AND REPOSITIONING OSBL EQUIPMENT	MASI	TSPN	APKL

Plot plan

PROJECT	New Biodiesel Pre-treatment Plant - Pernis			SCALE	SIZE
CLIENT	Shell	DATE	15/02/2021	SCALE	A0
DESIGNER	154306	SUB	30	DATE	13
PROJECT NO.	154306	REV.	1	DATE	1