

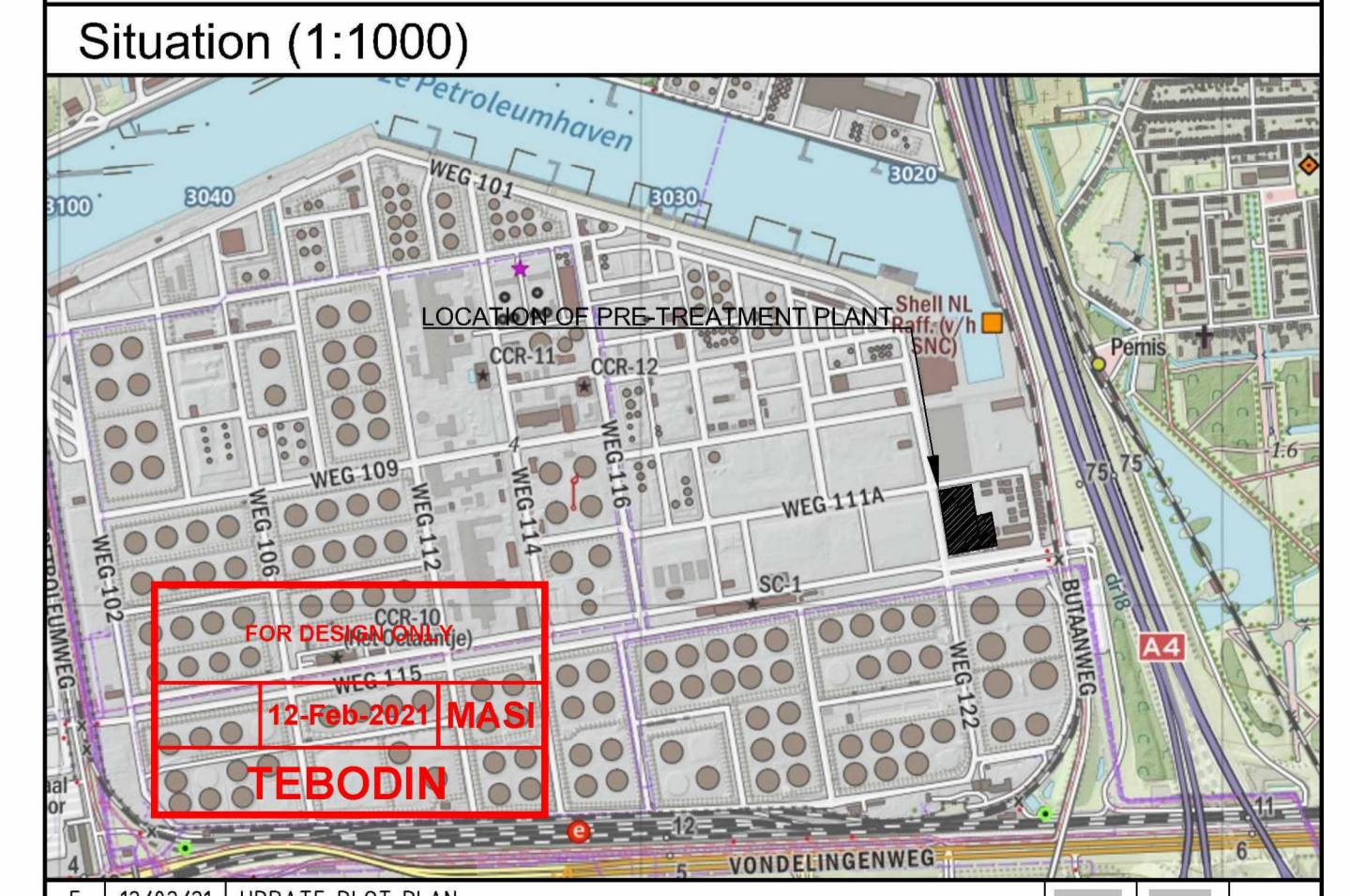
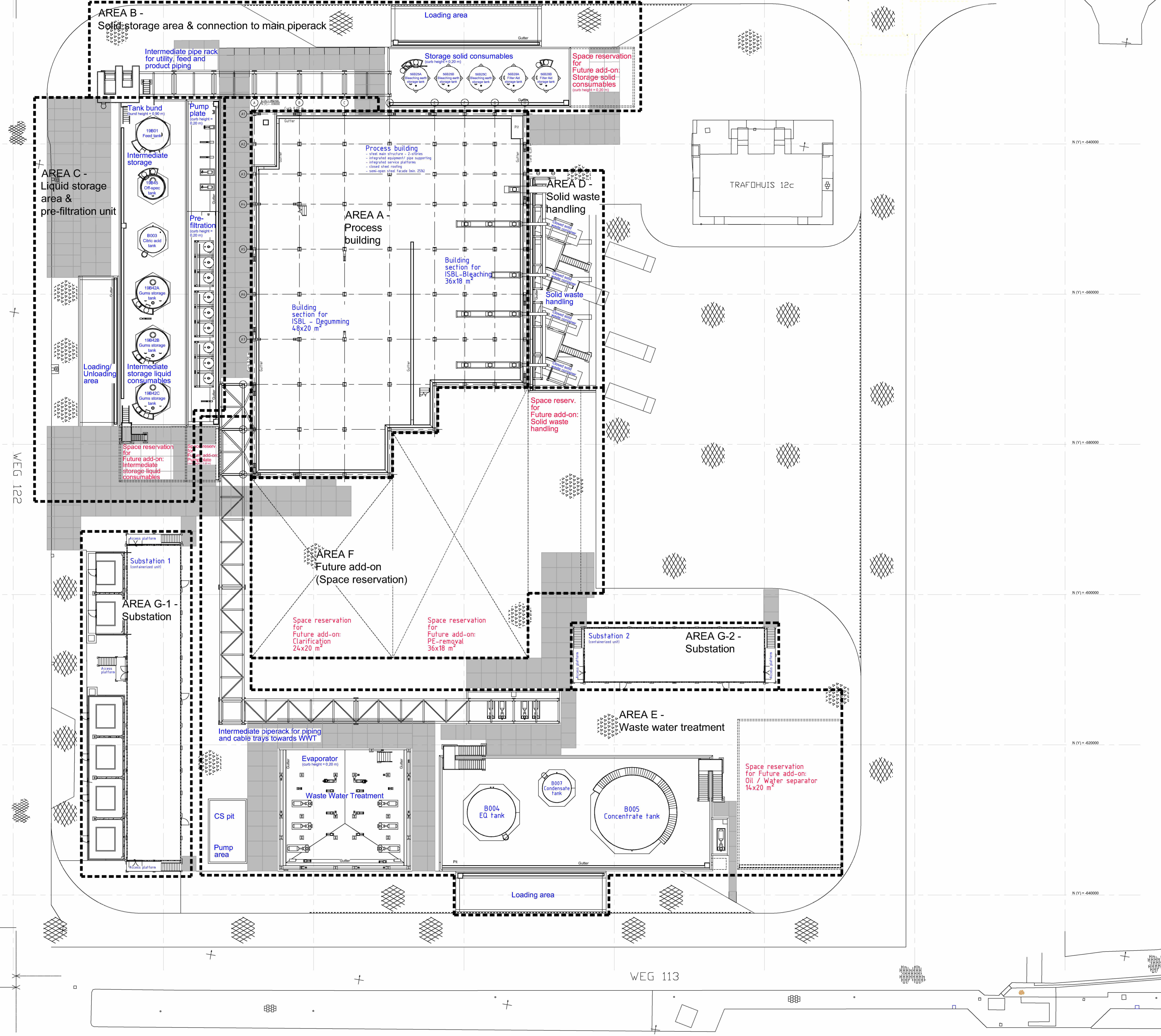
**General remarks**

- Grade level = 0.000 ± 1.100+N.A.P. (general soil elevation)
- All dimensions in mm, unless otherwise indicated
- Levels in millimeters with respect to level 0, unless otherwise indicated
- All dimensions must be checked at site
- It is not allowed to measure from this drawing

= Revision  
 = Hold  
 = Revision indication  
 = Dimensioning not on scale  
 = Dimensioning to be checked on site

**Project coordinates**

|                                    | Description        | Value (mm) | RD Coordinate/<br>NAP reference | Additional remarks              |
|------------------------------------|--------------------|------------|---------------------------------|---------------------------------|
| Model Zero Point (Point 96)        | Plant Coordinate X | 0          | 84568,39 m                      |                                 |
|                                    | Plant Coordinate Y | 0          | 433571,75 m                     |                                 |
|                                    | Plant Coordinate Z | 0          | 4,1 m + N.A.P.                  | To be verified with site survey |
| Project Reference Point (Point 22) | Plant Coordinate X | 474634     | 85137,48 m                      |                                 |
|                                    | Plant Coordinate Y | -652401    | 433007,81 m                     |                                 |
|                                    | Plant Coordinate Z | 0          | 4,1 m + N.A.P.                  | To be verified with site survey |



| REV. | DATE     | DESCRIPTION   | DRAWN | CHECKED | APPROVED |
|------|----------|---|-------|---------|----------|
| E    | 12/02/21 | UPDATE PLOT PLAN  |       |         |          |
| D    | 26/11/20 | UPDATE PLOT PLAN REGARDING WWT                              |       |         |          |
| C    | 14/10/20 | UPDATES REG. PLOT LOCATION AND REPOSITIONING OSBL EQUIPMENT |       |         |          |

**Plot plan**

|  |             |  |     |      |               |       |      |    |
|--|-------------|--|-----|------|---------------|-------|------|----|
|  | PROJECT     | New Biodiesel Pre-treatment Plant - Pernis |     |      | SCALE         | 1:200 | SIZE | A0 |
|  | CLIENT      | Sheet                                      | SUB | DISC | DRAMA/PROJECT | 1     | 1    | E  |
|  | NO. DRAWING | 154306                                     | 30  | 13   | 1362001       |       |      |    |