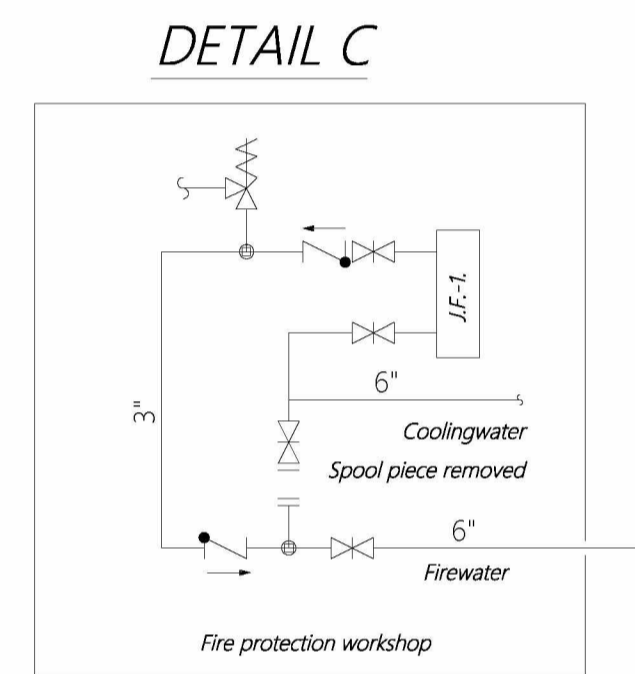
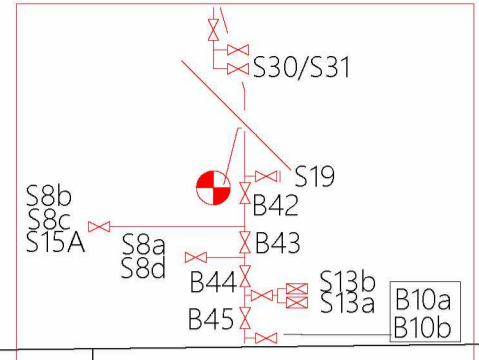


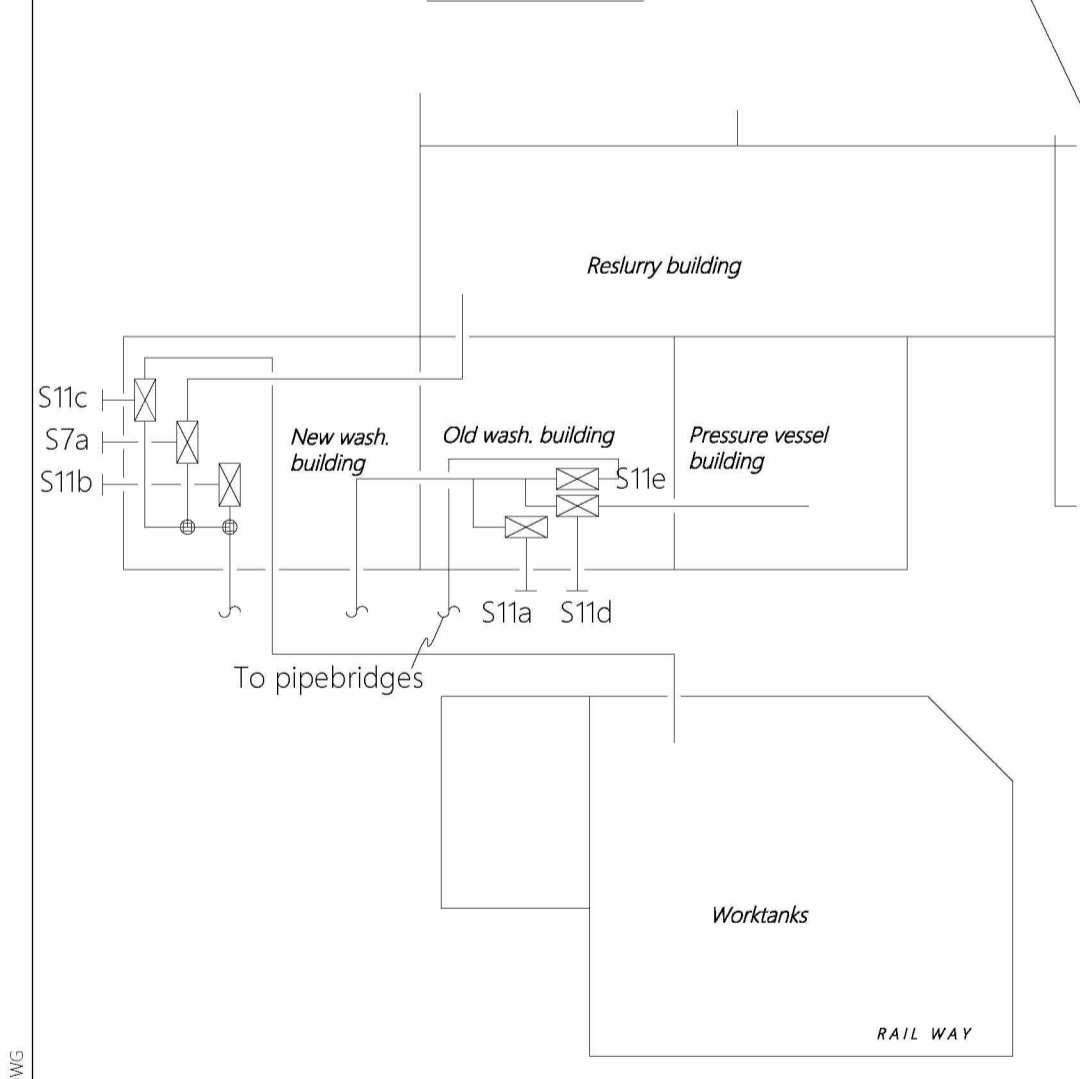
DETAIL S20

DETAIL AA

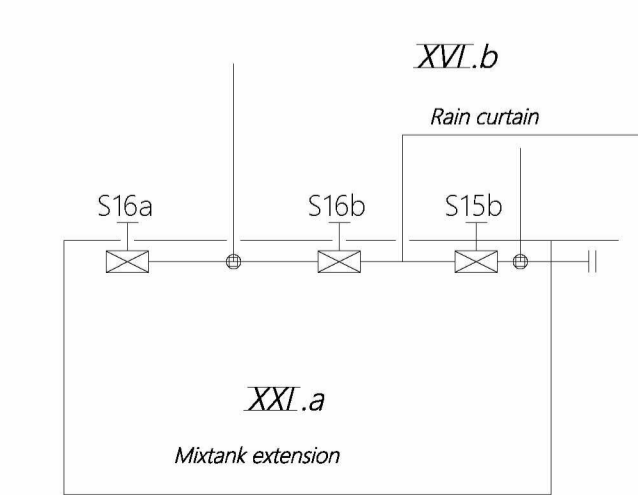
CAPACITEIT BRANDWATER DIESELPOMPEN BIJ 10 Bar:		BLUSBOOTAANSLUITING:		CAPACITEIT SCHUIMVORMEND MIDDEL:	
P-4580-3A	456 M3/H	2x Nok 160mm	T-0580-11A	6000 L	2x FIREDOSPOMP 6000 L/min per pomp
P-4580-3B	456 M3/H	2x Nok 81mm	T-0580-11B	6000 L	
P-4580-3C	456 M3/H		TOTAAL	12000 L	
P-4580-3D	684 M3/H				
TOTAAL		2052 M3/H			



DETAIL A



DETAIL B



NOOT:
- S19 IS BUITEN GEBRUIK

BRANDWATER

Symbol	Code	Description
		Monitor
		Rapid intervention canon
	BH	Above ground hydrant
	OH	Under ground hydrant
		Under ground valve
		Post indicator valve
		Valve before sprinkler system
		Wall valve before sprinkler system
		Sprinkler system without valve
		Gatevalve
		Checkvalve
		Firewaterline / Sprinkler system line

6 HA	60.000 m ²
81 ARE	8.100 m ²
90 CENTIARE	90 m ²
	68.190 m ²

Drawing name: FIREWATER INSTALLATION ASHLAND PLANT

NOORDWEG 9
ZWIJNDRECHT
THE NETHERLANDS

Ashland
always solving
Ashland Industries Nederland BV

P	UPDATE SLOOP SCM S1+2/S6/S17	25-01-19	BKG
Q	Leiding rond drukt. as built	24-02-20	RVT
R	SCHUIMBLUSVOORZIENING	20-09-21	JDN
Rev.	Description	Drawn	By
		26-01-87	MBH
		Checked	NVE
Drawing nr.	08.00.6.001 B01		
Ref.	-		
Scale	1:500		

C:\USERS\B009\APPDATA\LOCAL\TEMP\3CT1B649-5A5-45B-8739-3A456973FA60500001.DWG