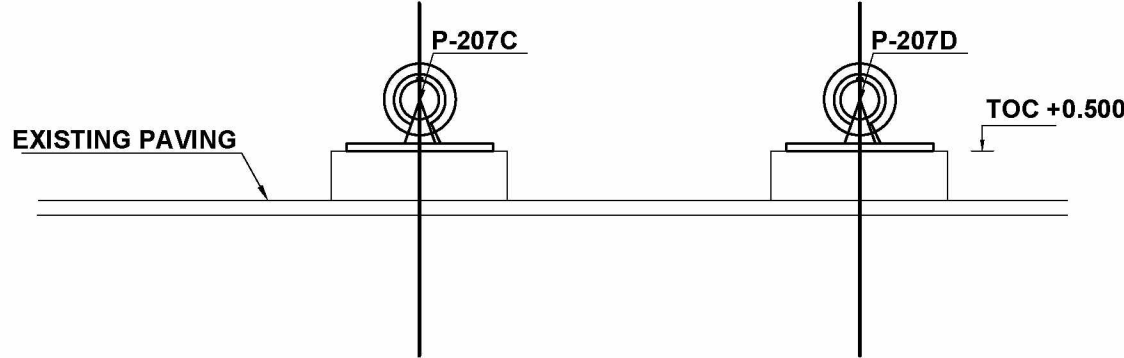
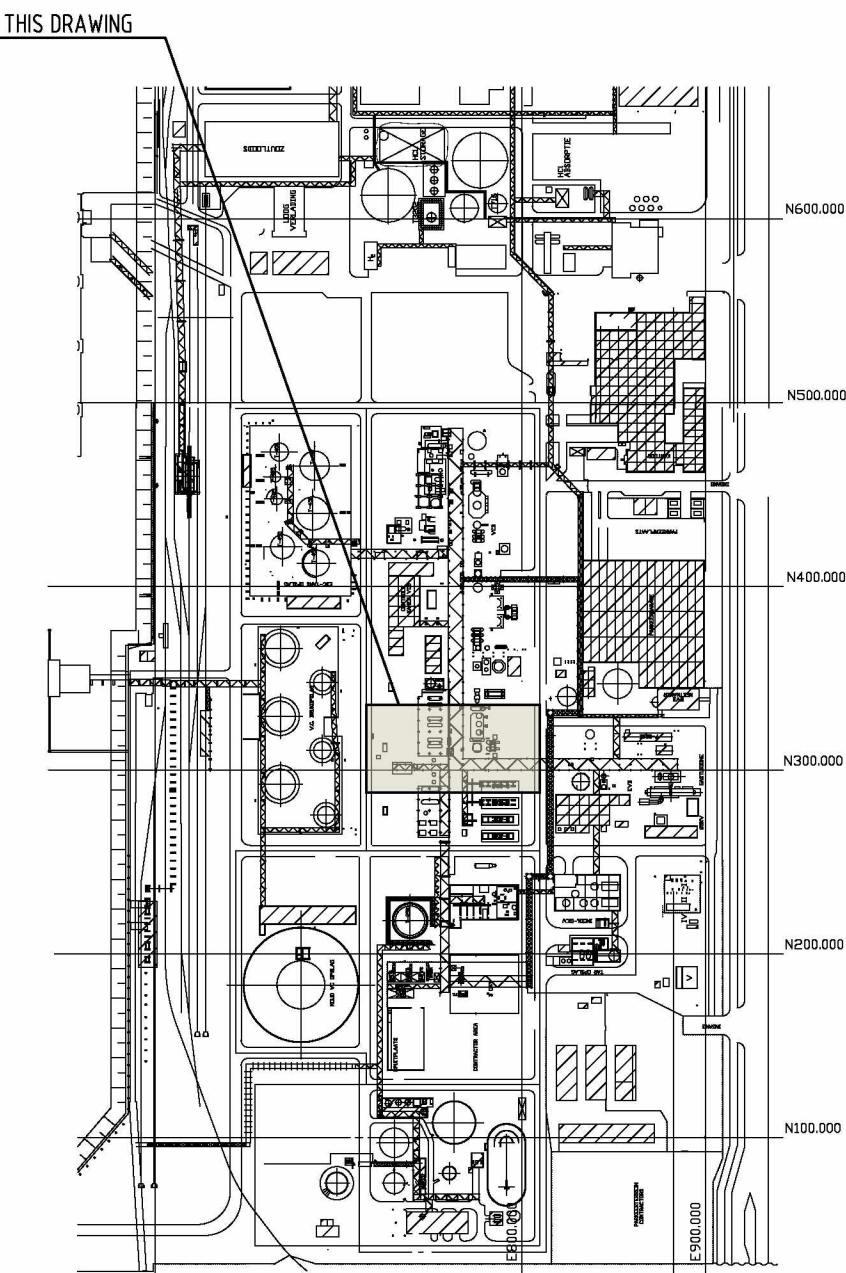


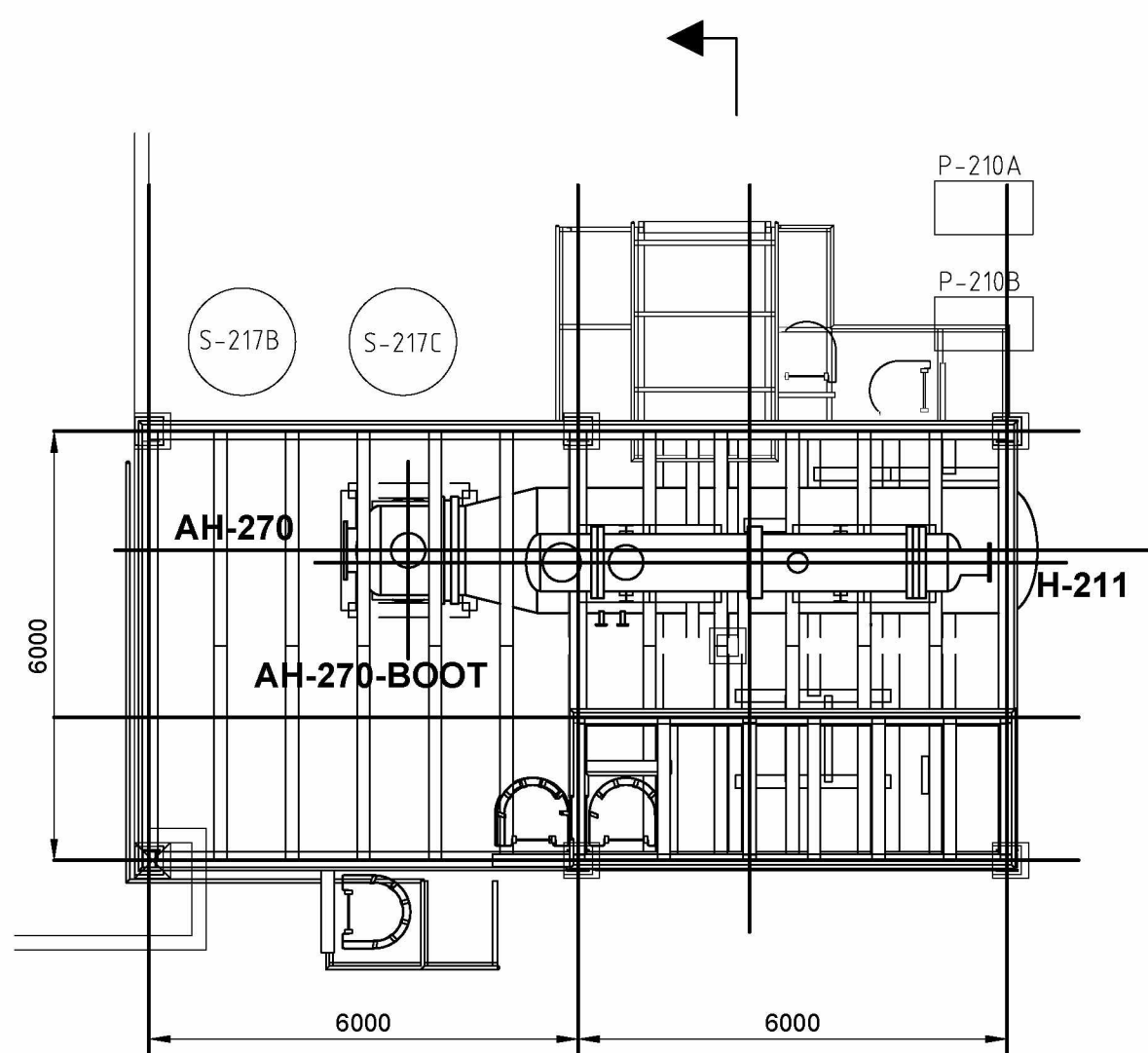
PLAN VIEW PUMPS P-207C & D



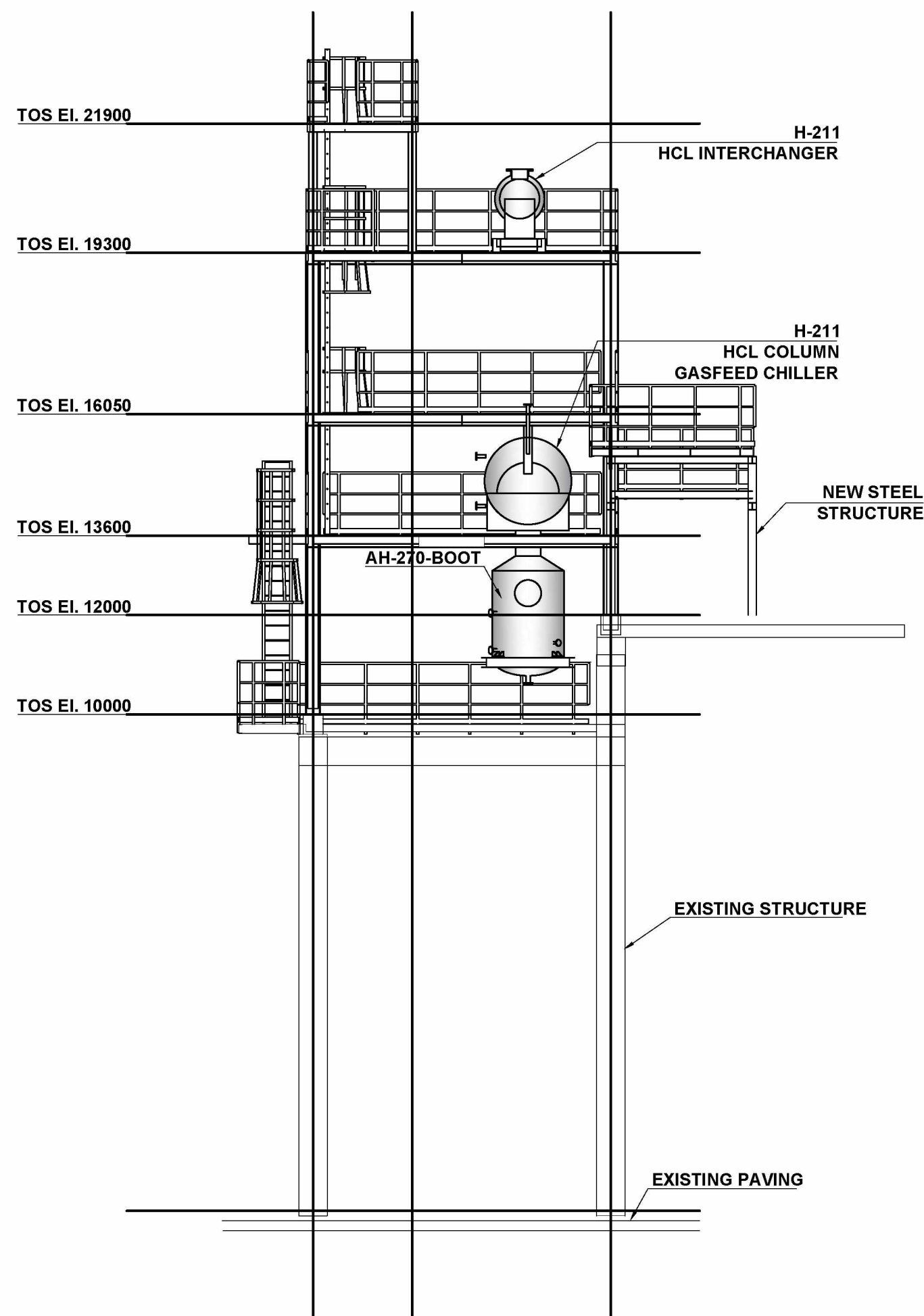
SECTION C-C



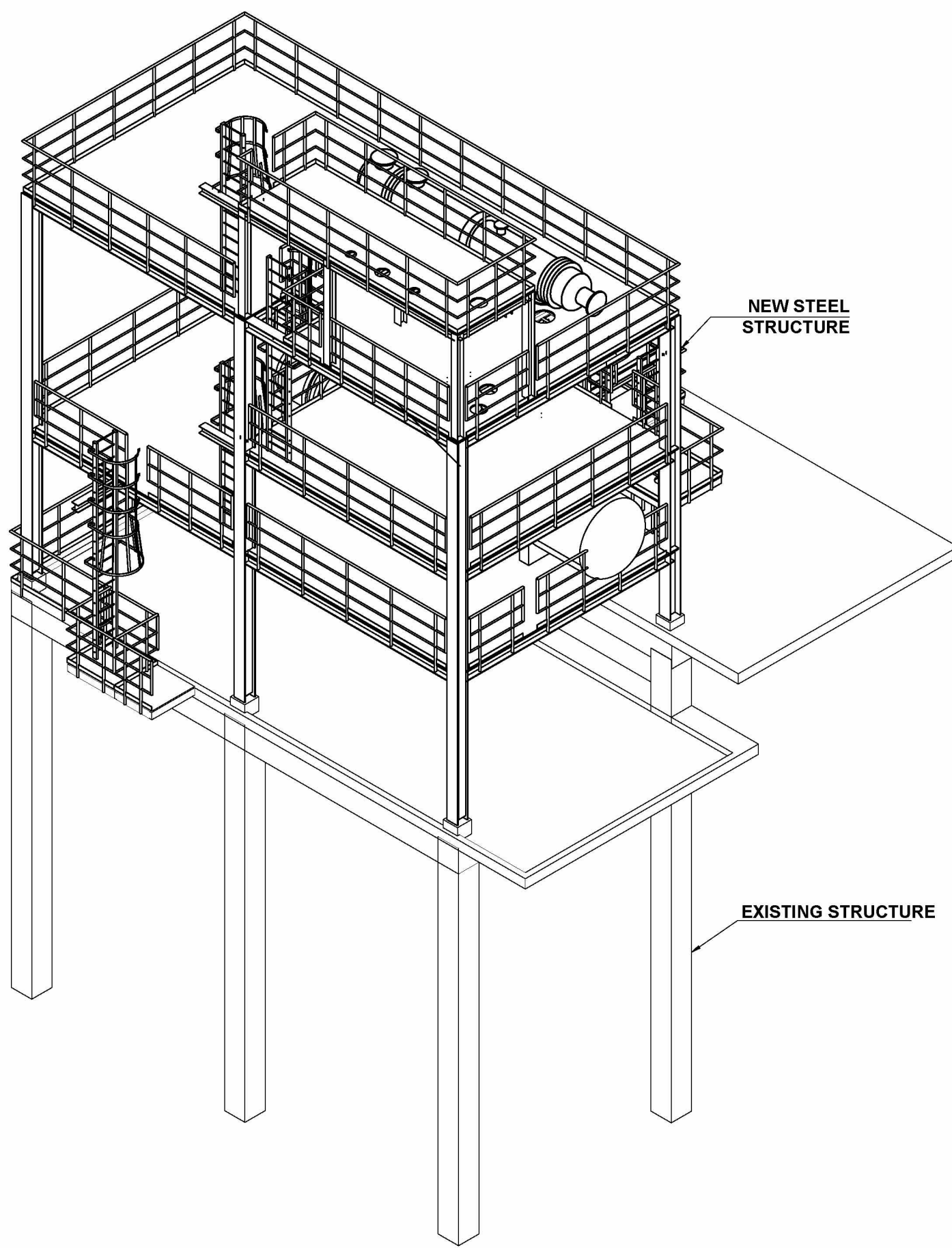
KEY PLAN



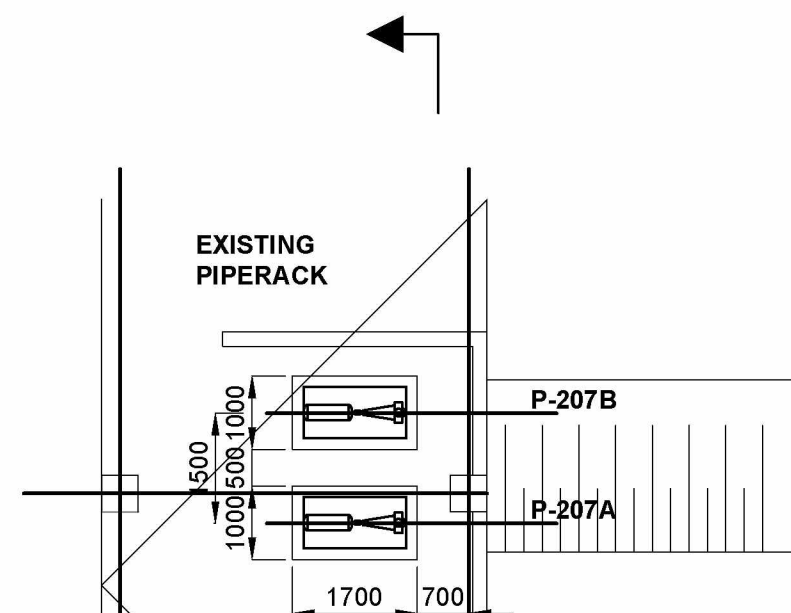
PLAN VIEW NEW
AH-207, AH-270 BOOT AND H-211



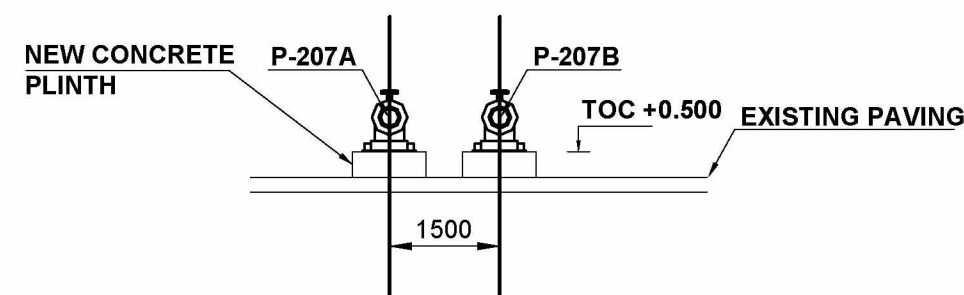
SECTION A-A



3D ISO VIEW

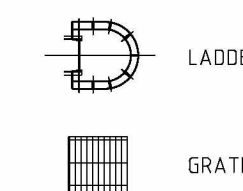


PLAN VIEW PUMPS 207A & B



SECTION B-B

LEGEND



ABBREVIATIONS

BOT = BOTTOM OF CONCRETE
CJ = CONSTRUCTION JOINT
CL = CENTER LINE
DIA = DIAMETER
EL = ELEVATION
FFL = FINISHED FLOOR LEVEL
FRS = FIRE RESISTANCE (in mm)
GL = GRADE LEVEL
RWS = RAIN WATER SYSTEM

n = METER
mm = MILLIMETER
MIN = MINIMUM
MAX = MAXIMUM
T.O.C. = TOP OF CONCRETE
T.O.S. = TOP OF STEEL
TYP = TYPICAL
THK = THICKNESS

REFERENCE DRAWINGS

FLUOR DOC. NO.	DRAWING NO.	TITLE
A8XN-HTDC-215-PLN-001-00001	A.111.218	PLOT PLAN GREENFIELD AREA
A8XN-HTDC-215-PLN-001-00002	A.111.219	SECTION A-A & B-B
A8XN-HTDC-215-PLN-001-00003	A.111.219	SECTION B-B & C-C
A8XN-HTDC-215-PLN-001-00004	A.111.219	SECTION E-F, F-F, G-G, H-H, I-I, J-J
A8XN-HTDC-215-PLN-001-00005	A.111.243	SCISSOR LAYOUT
A8XN-HTDC-215-PLN-001-00006	A.111.214	3D ISO VIEW
A8XN-HTDC-215-PLN-001-00007	A.111.288	BROWN FIELD ISBL KEY PLAN
A8XN-HTDC-215-PLN-001-00009	A.111.492	BROWN FIELD ISBL 1
A8XN-HTDC-215-PLN-001-00010	A.111.493	BROWN FIELD ISBL 4 & 5

NOTE:

- ALL DIMENSIONS IN MILLIMETERS UNLESS NOTED OTHERWISE.
- DIMENSIONS ARE APPROXIMATE AND NOT FINAL.
- PLANT LEVELS:
CALLED ELEVATION (IN MM) = 0.000
ACTUAL ELEVATION (IN M) N.A.P. = +4.750 = HPP

FLUOR

FLUOR DOC. NUMBER
A8XN-HTDC-215-PLN-001-00008

REV	DATE	REVISION DESCRIPTION	BY	CHK	APPV
A	26/04/2021	ISSUED FOR CLIENT REVIEW	NH	ES	PK
B	16/05/2021	ISSUED FOR PERMITTING	NH	PK	PK
C	05/10/2021	ISSUED FOR PERMITTING	PN	PK	PK

no.	dept	description	by	department	checked	approved
1						
2						
3						
4						

fact no.	tbl. det.	process / unit	status	project no.	itemcode / tag no.	vendor name	vendor project no.

title: HTDC PLOT BOTLEK BROWN FIELD ISBL 1 & 2				location doc. no.			
part / fact. depth: HTDC				part list doc. no.			

scale	dimensions in	mm	Arch. proj.	doc. type	abbr.	PID doc. no.	PID number
1:100							

ShinEtsu Shin-Etsu PVC B.V. Botlek
A0 - 4.111.401
sh. 1