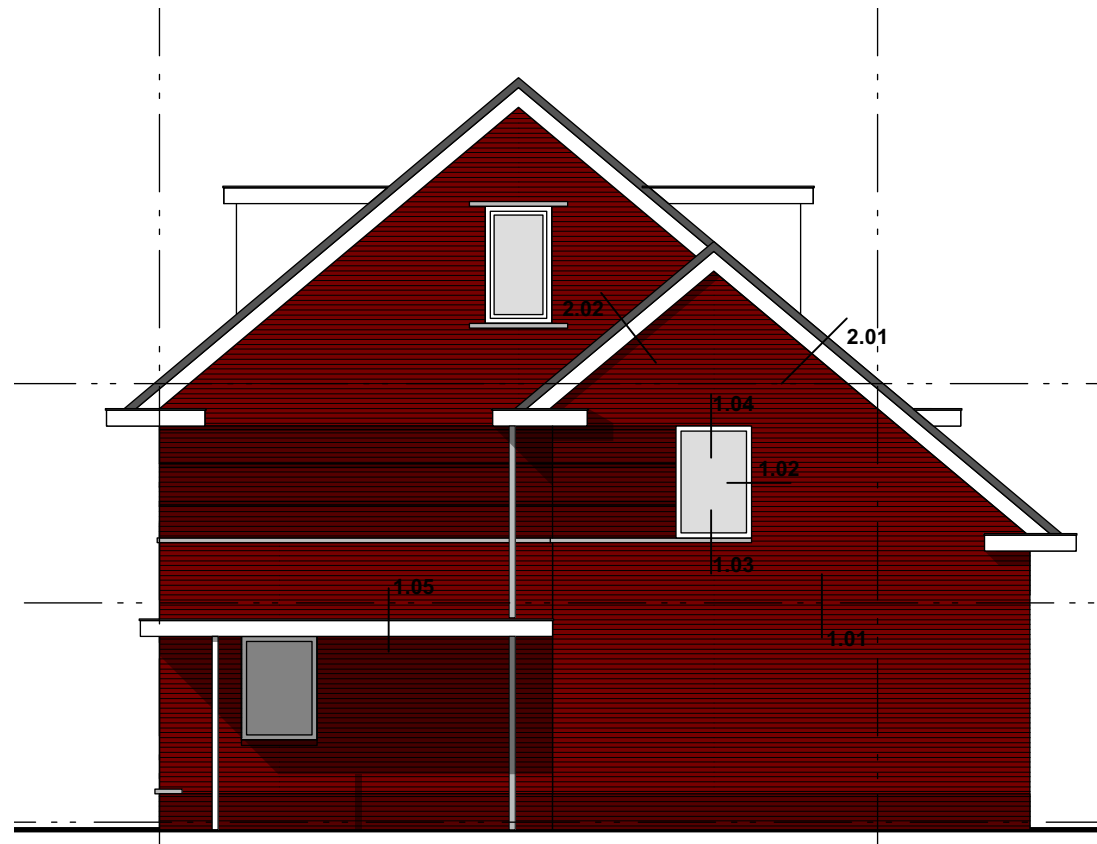




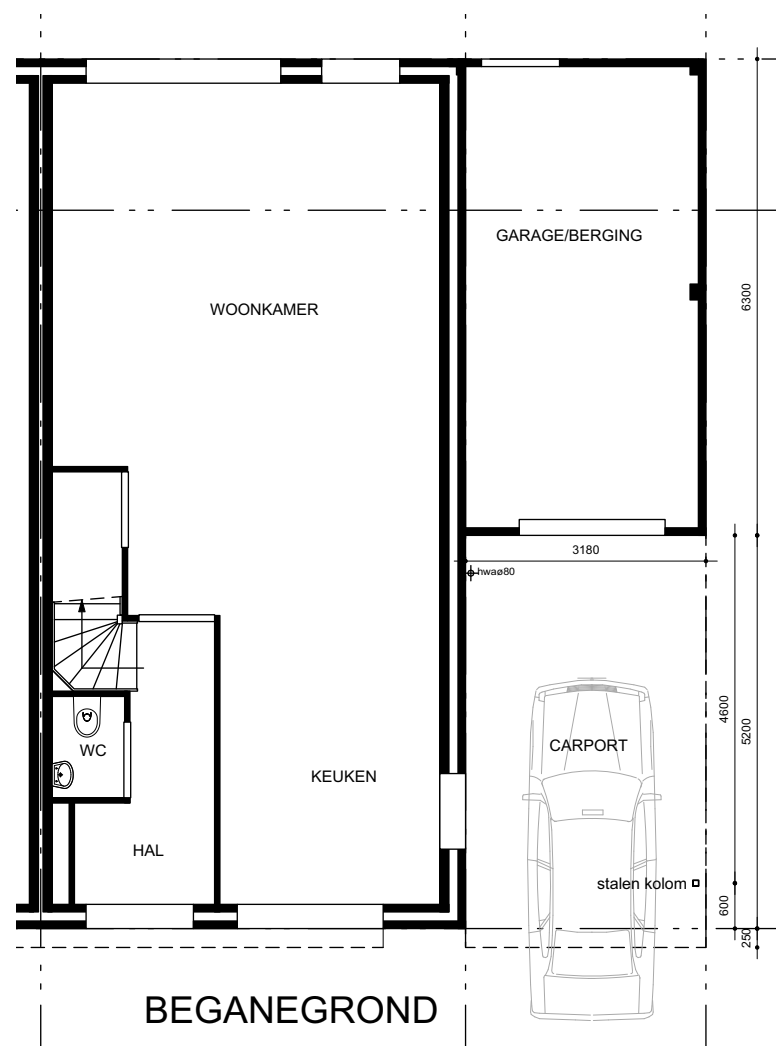
VOORGEVEL



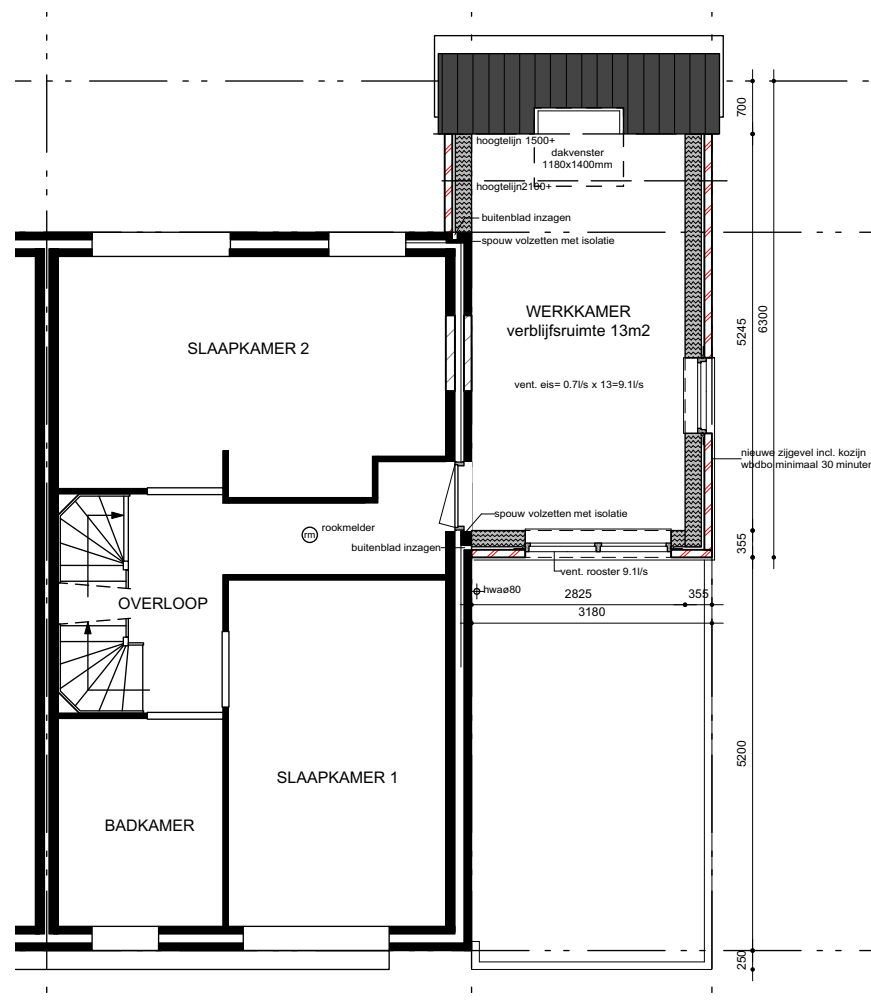
ZIJGEVEL



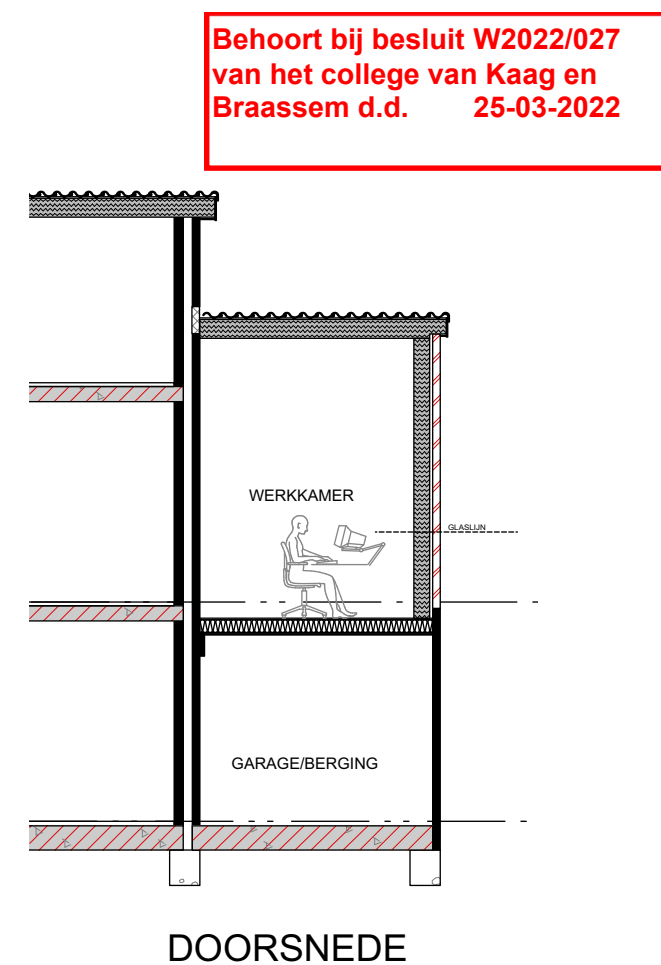
ACHTERGEVEL



BEGANEGROND

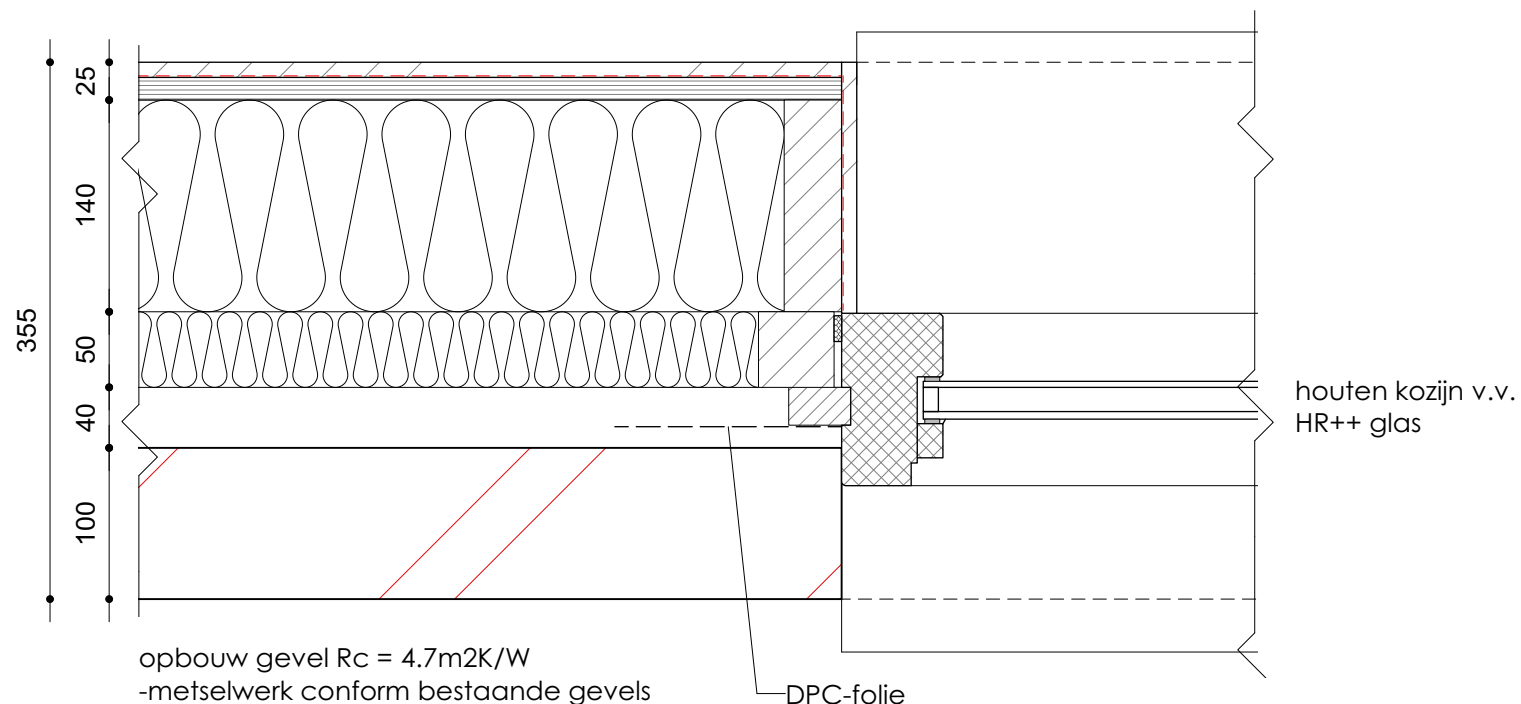


VERDIEPING



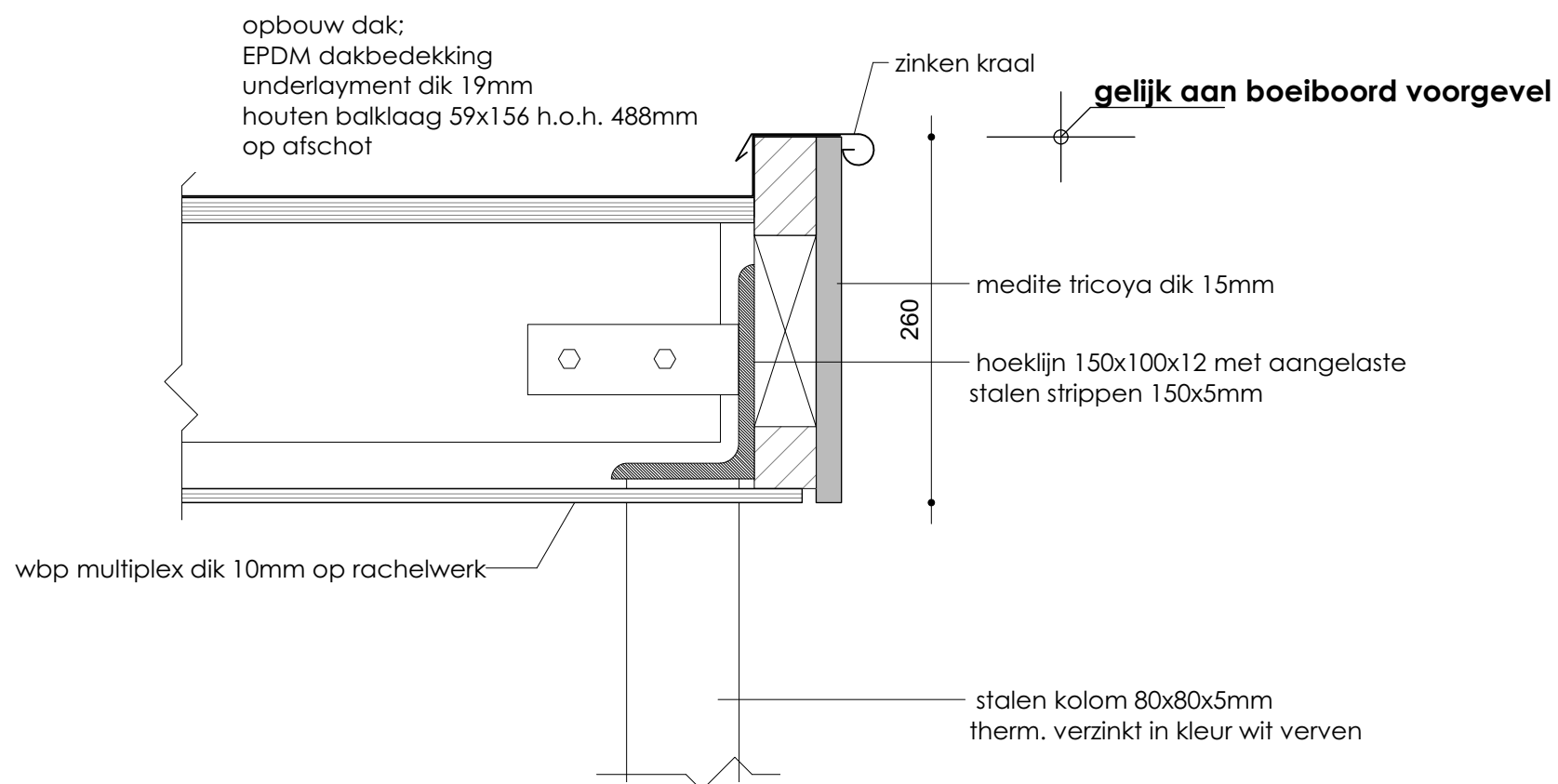
DOORSNEDE

Behoort bij besluit W2022/027  
van het college van Kaag en  
Braassem d.d. 25-03-2022

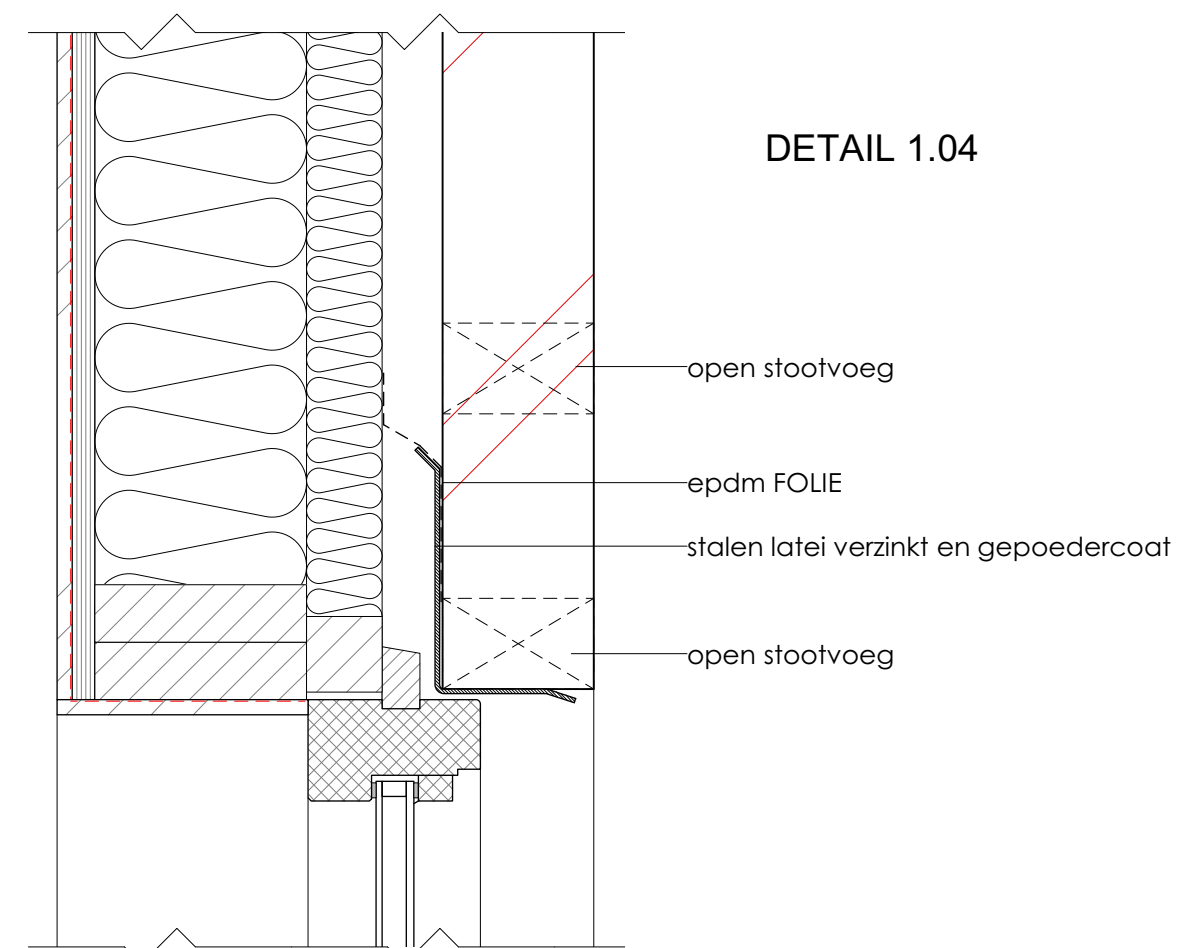


opbouw gevel Rc = 4.7m2K/W  
 -metselwerk conform bestaande gevels  
 -geventileerde spouw  
 -glaswol RKL facade, naden aftappen  
 -stijl en regelwerk 38x140mm  
 -glaswol dik 140mm  
 -OSB plaat dik 15mm  
 -dampremmende folie  
 -gipskartonplaat

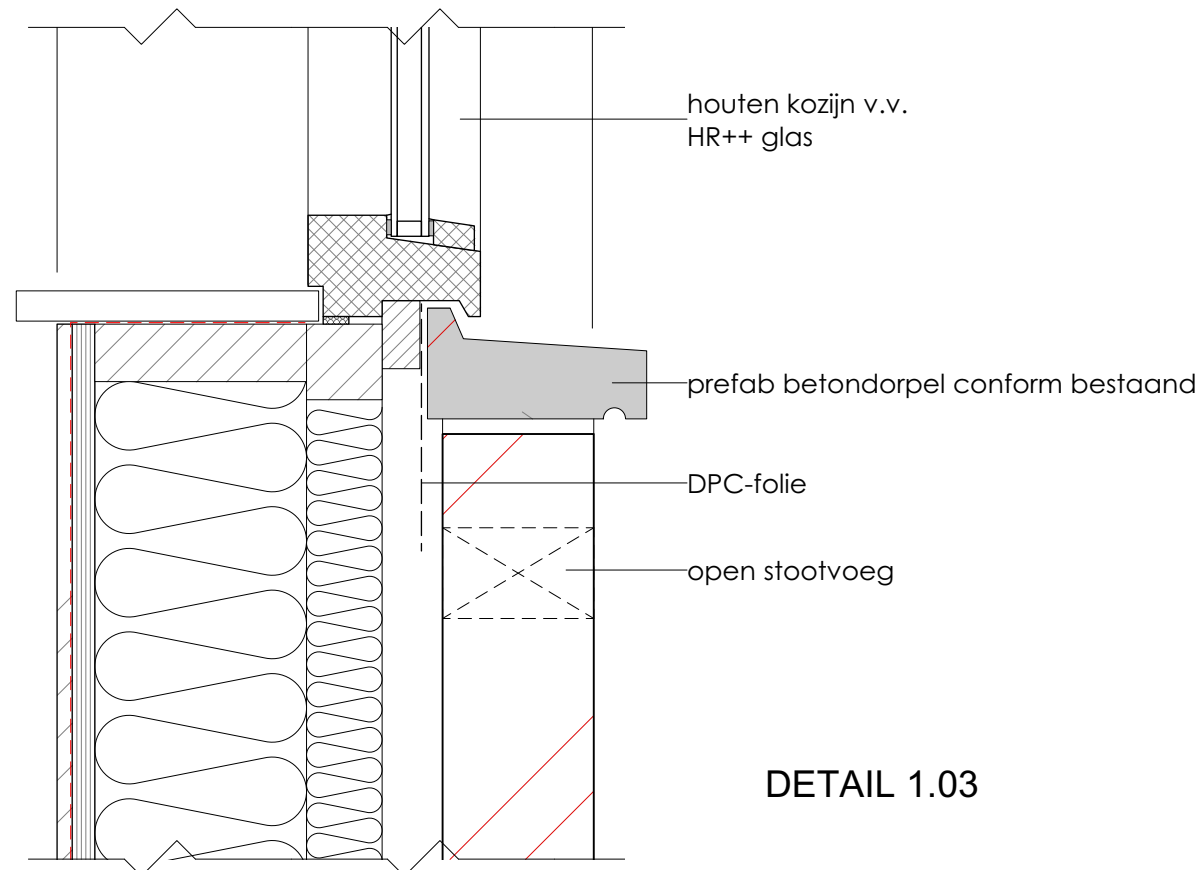
DETAIL 1.02



DETAIL 1.05



DETAIL 1.04



DETAIL 1.03