



voorgevel en zijgevel



achtergevel

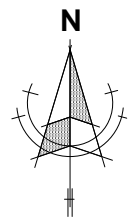
Behoort bij besluit W2022/027
van het college van Kaag en
Braassem d.d. 25-03-2022

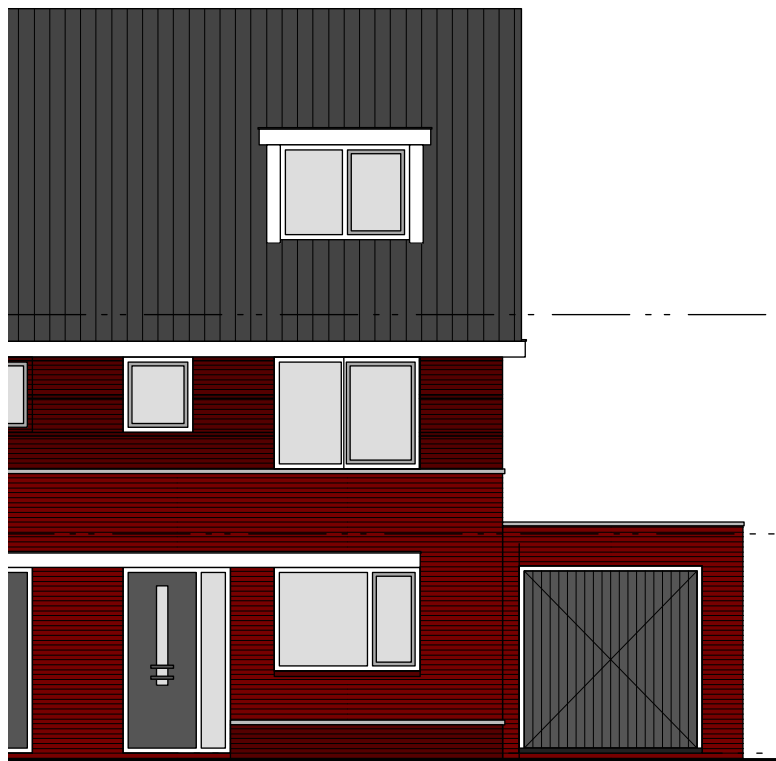


locatie; Aalscholver 8 2451WK Leimuiden

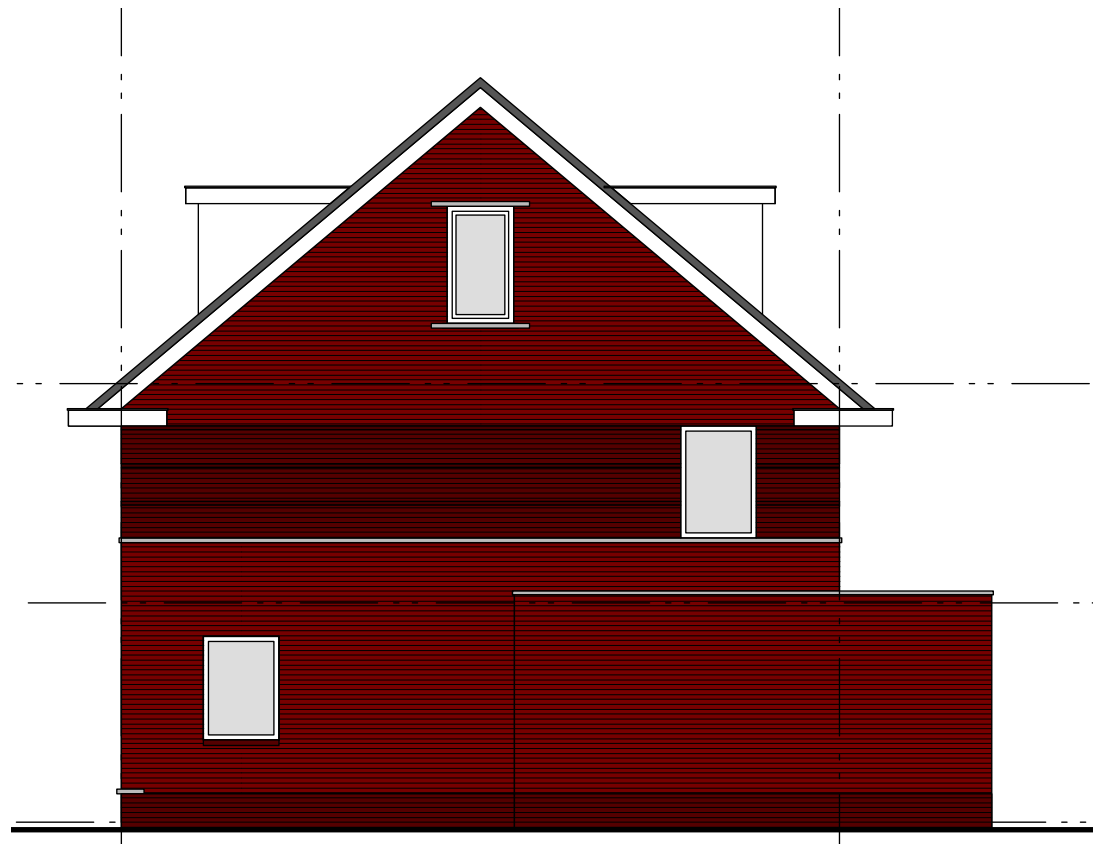


Kadastrale kaart





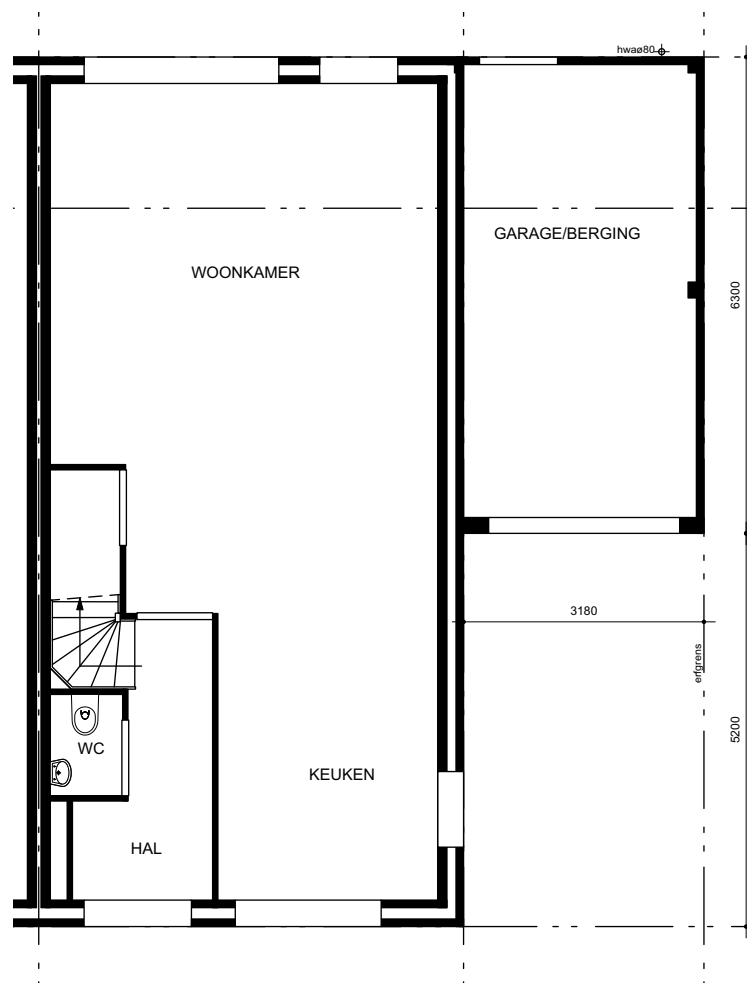
VOORGEVEL



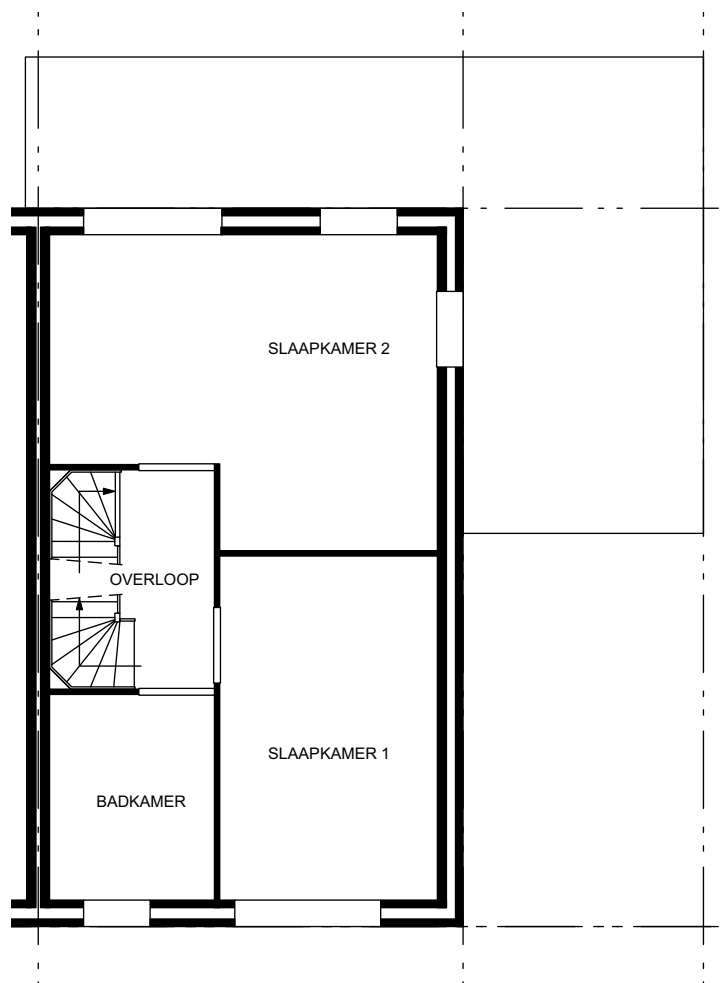
ZIJGEVEL



ACHTERGEVEL



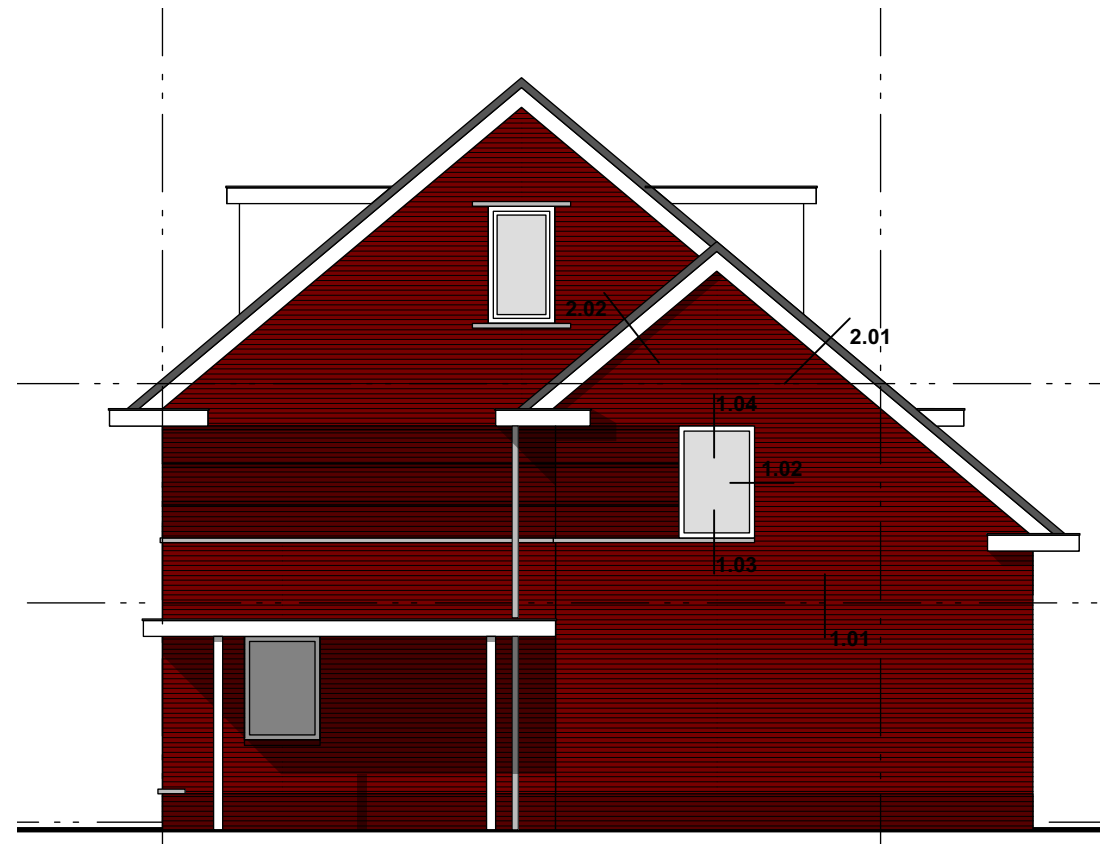
BEGANEGROND



VERDIEPING



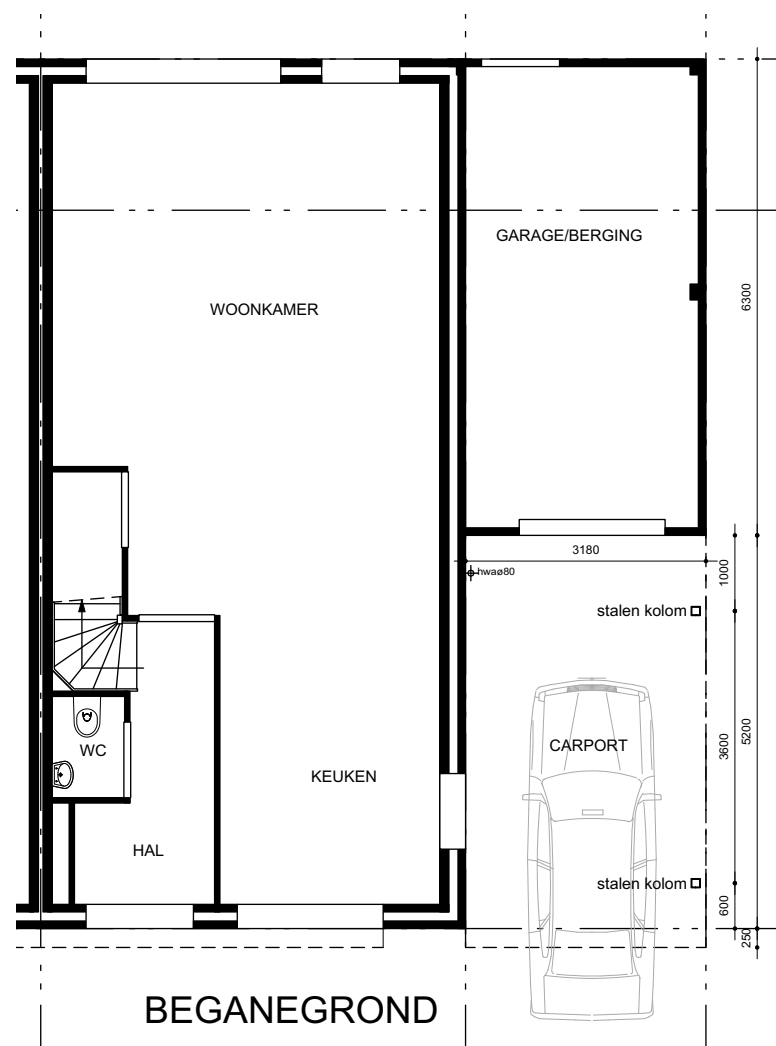
VOORGEVEL



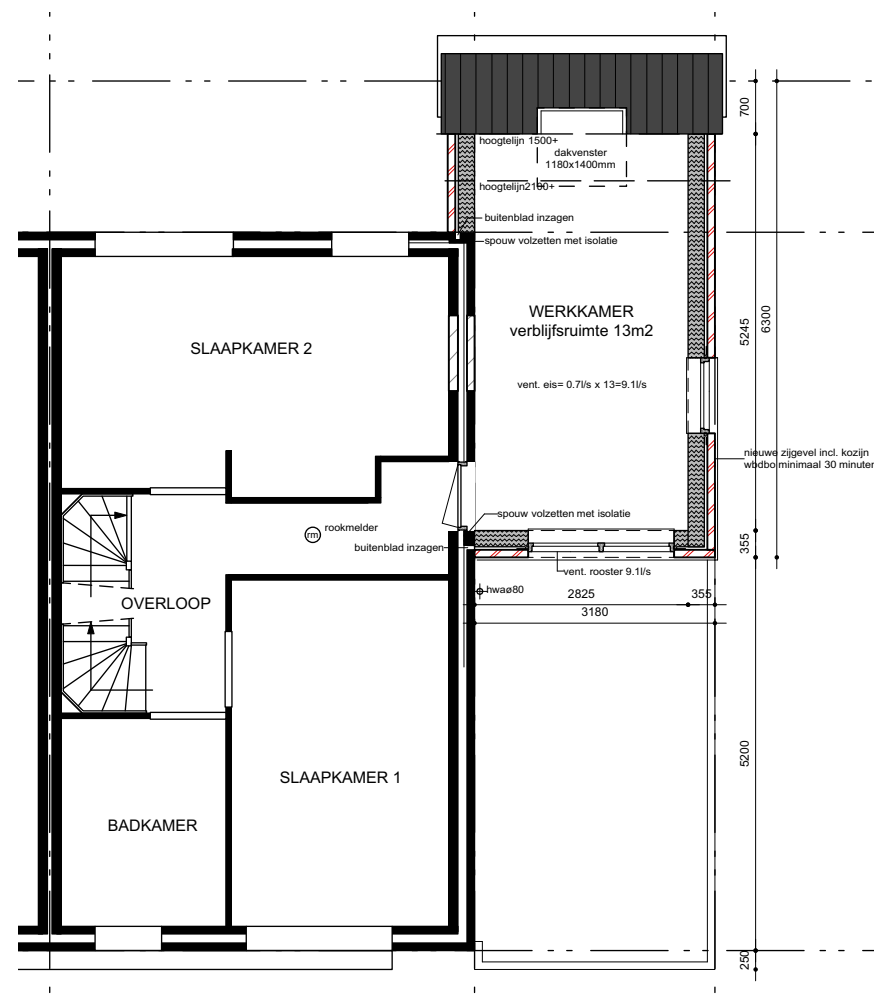
ZIJGEVEL A



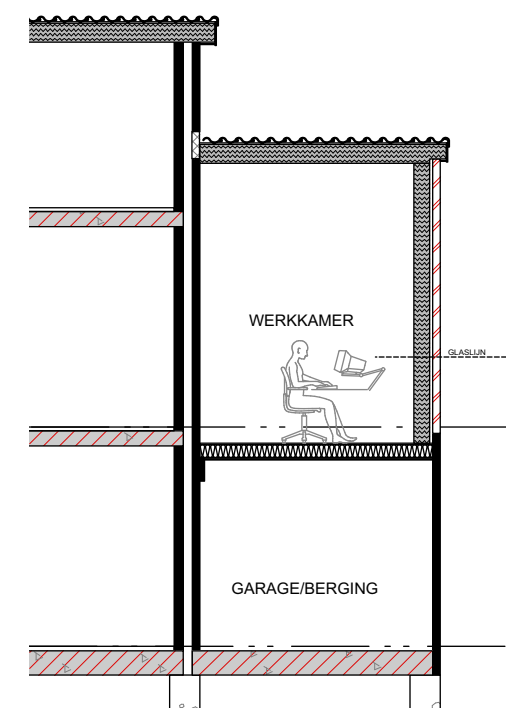
ZIJGEVEL B



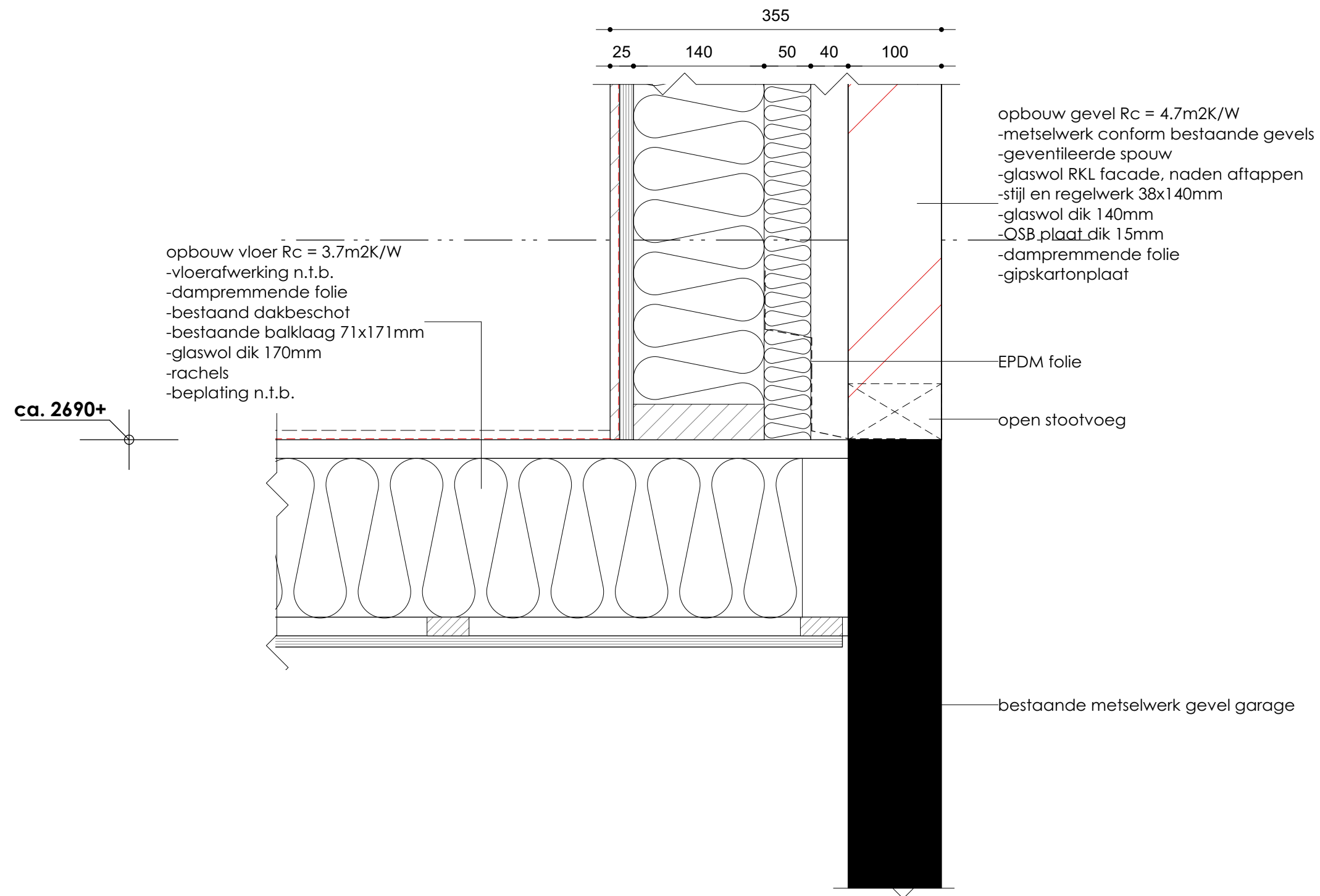
BEGANEGROUND

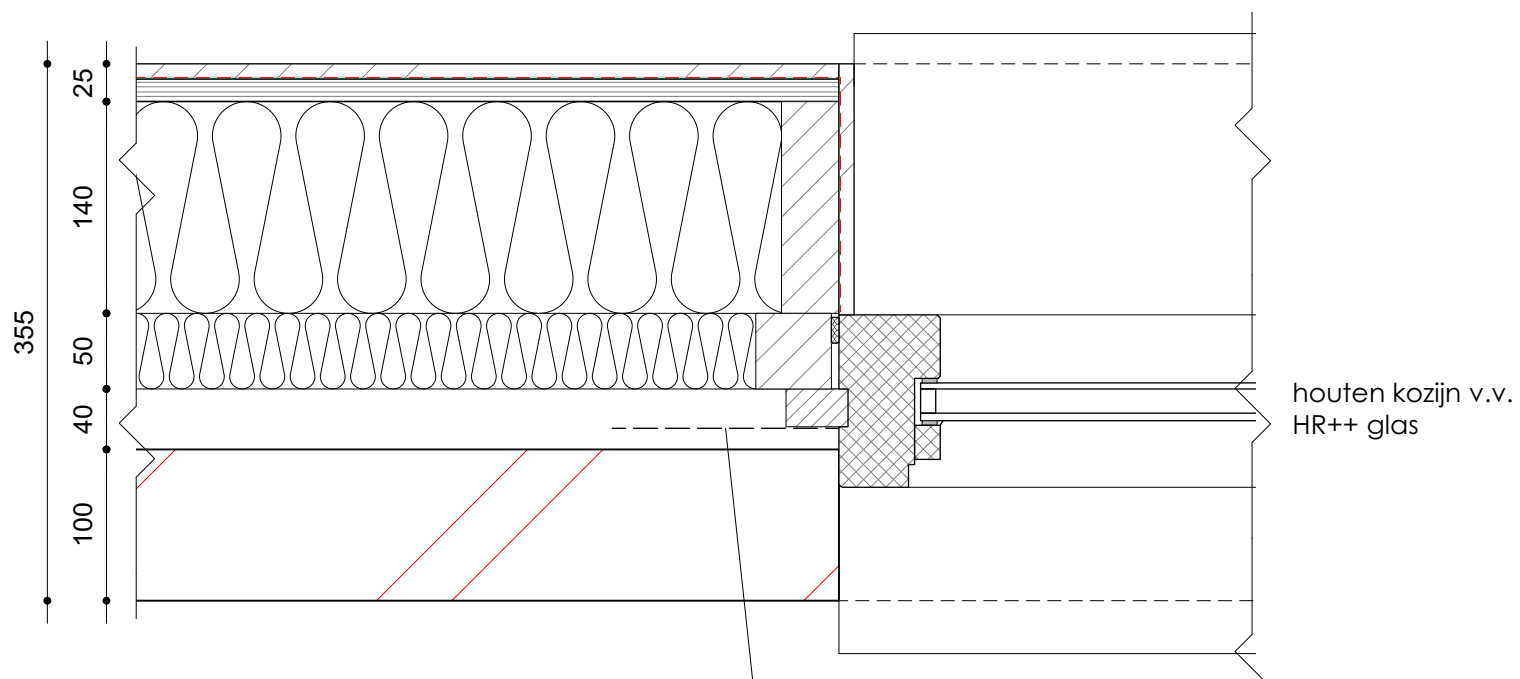


VERDIEPING



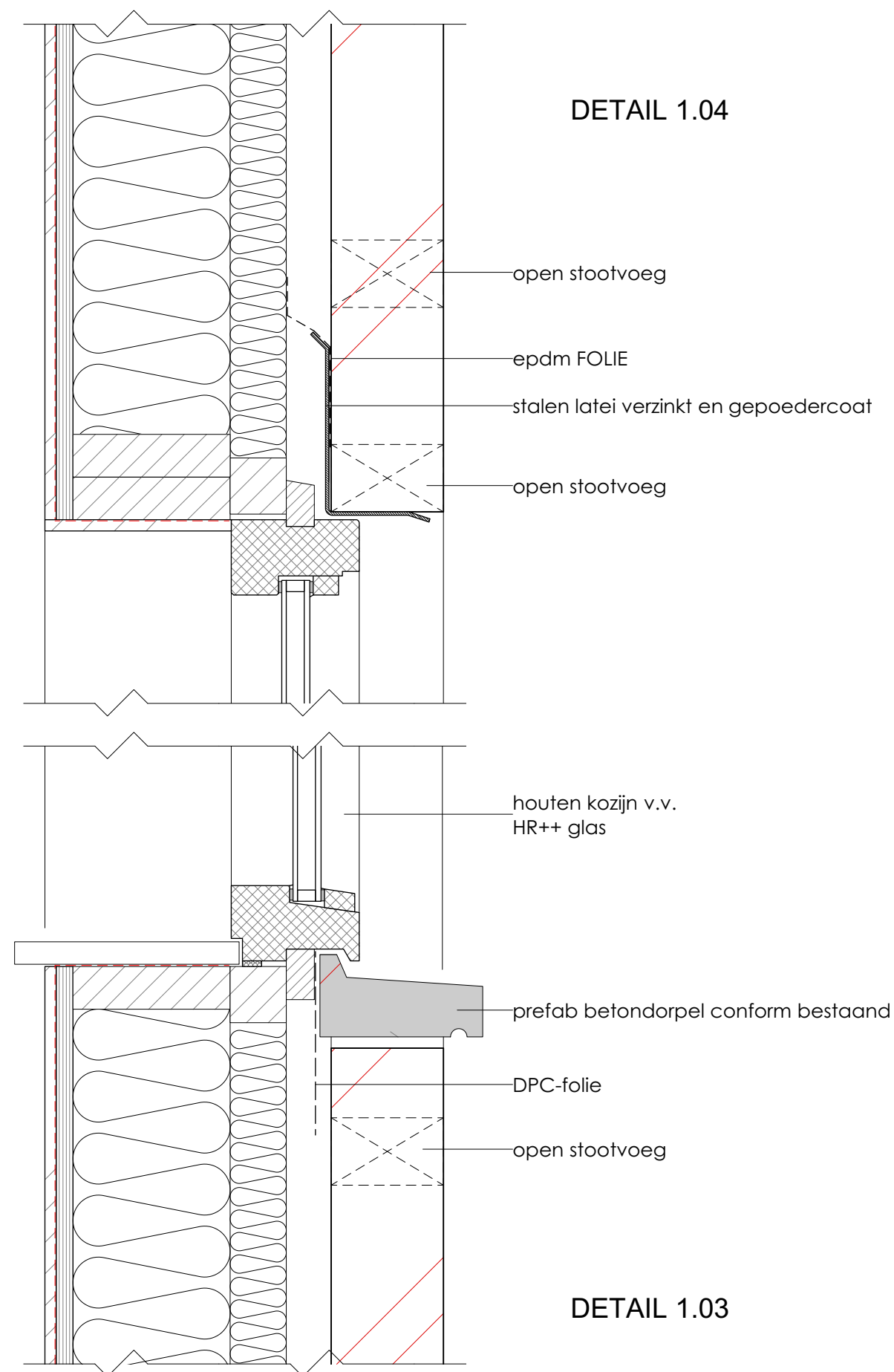
DOORSNEDE





opbouw gevel $R_c = 4.7\text{m}^2\text{K/W}$
 -metselwerk conform bestaande gevels
 -geventileerde spouw
 -glaswol RKL facade, naden aftappen
 -stijl en regelwerk 38x140mm
 -glaswol dik 140mm
 -OSB plaat dik 15mm
 -dampremmende folie
 -gipskartonplaat

DETAIL 1.02



DETAIL 1.04

open stootvoeg
 epdm FOLIE
 stalen latei verzinkt en gepoedercoat
 open stootvoeg

houten kozijn v.v.
 HR++ glas

prefab betondorpel conform bestaand
 DPC-folie
 open stootvoeg

DETAIL 1.03

