



Triton project

2021 05 27

Beauty Commission – agreed upon appearance

620 156 31

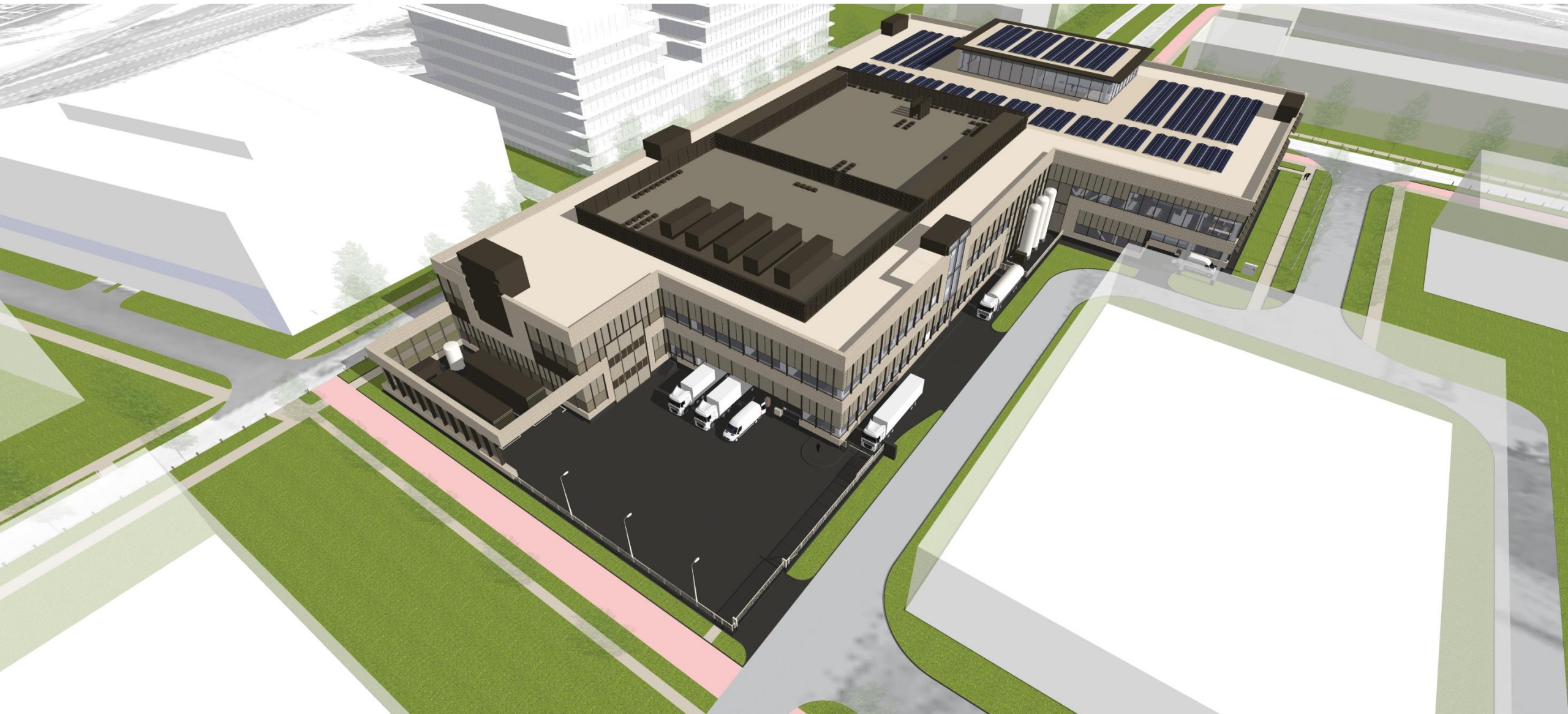
(Welstandscommissie)

1. **Canopy.** The height of the canopy will be lowered to align with the upper louvre / bottom of the closed panel. This in order to have a better balance at the entrance façade.
2. **Screens.** The material of the screened area to hide the generators from view will be similar to the metal panels used above the windows. But with the exception that they will be perforated to fulfill the functional needs. This to guarantee a more uniform appearance.
3. **Chillers.** The chillers on the roof will exceed the height of the acoustic fence, the color will be dark to keep a visual unity with the acoustic screens.
4. **LN2 tanks.** The LN2 tanks are integrated into the total design of the building. The building façade design now “reacts” on the position of the LN2 tanks and folds away at their location. In this way the tanks are not merely positioned in front of the façade but are forming a dialogue.
5. **Acoustic fence.** The acoustic fence on the roof will have one visual appearance, either horizontal or vertical.
6. **Axis ending.** The building is the entrance of the west side of the LBSP. The glass façade in the middle is not aligned with the two roads and the green axis in between, but it is with the central axis of all traffic lanes (including bikes). To also give an answer to the ending of the green axis an extra element will be introduced. Further elaboration will take place based on this principle.





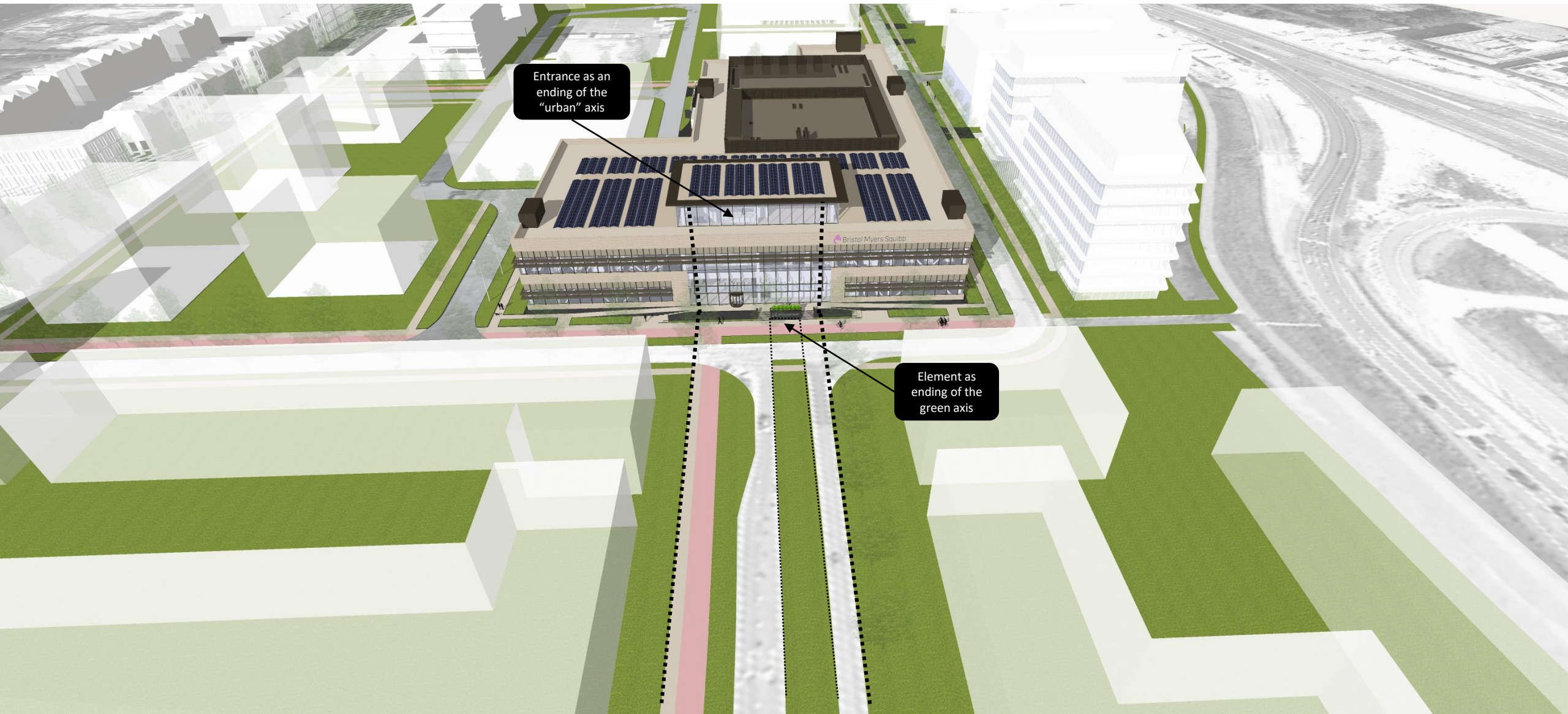
Same color and material. The difference will be a perforation



Façade – LN2 tank corner



Façade - Southwest





Element as ending of the green axis. Further elaboration will take place based on this principle.