

Ligging Maasvlakte New Area en huidige site



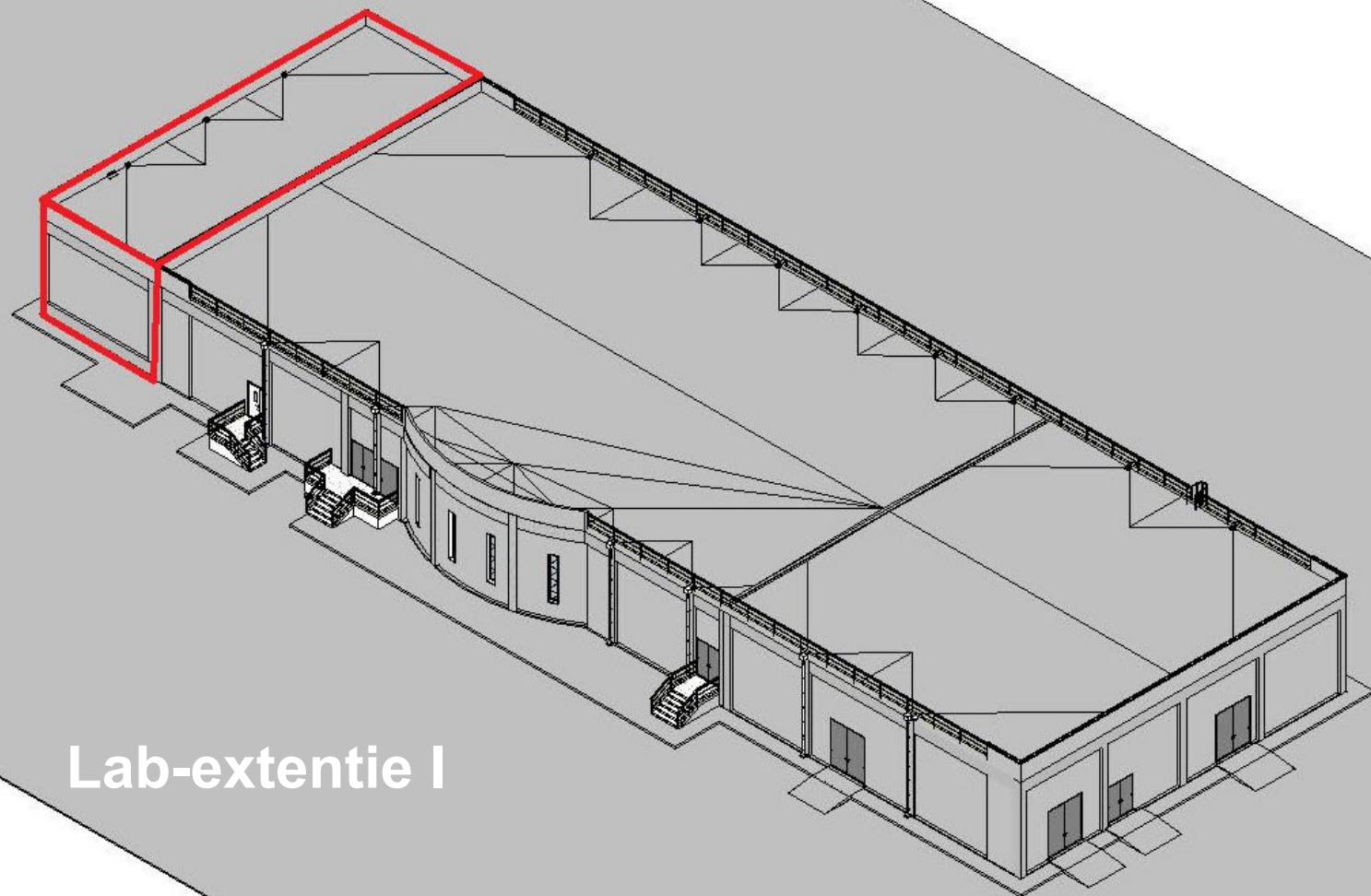
```

E= 1556.289 [LOCAL CC
N= 943.930 [LOCAL CC
E= 62360 [ABSOLUTE COOR
N= 442463 [ABSOLUTE COOR
E= 1534.740 [LOCAL CC
N= 543.993 [LOCAL CC
E= 623737.280 [ABSOLUTE COOR
N= 442472.100 [ABSOLUTE COOR
E= 798 [LOCAL COORDINATE
N= 1042 [LOCAL COORDINATE
E= 313.100 [ABSOLUTE COORDINATE
N= 7481.700 [ABSOLUTE COORDINATE
COORDINATE
COORDINATE

```

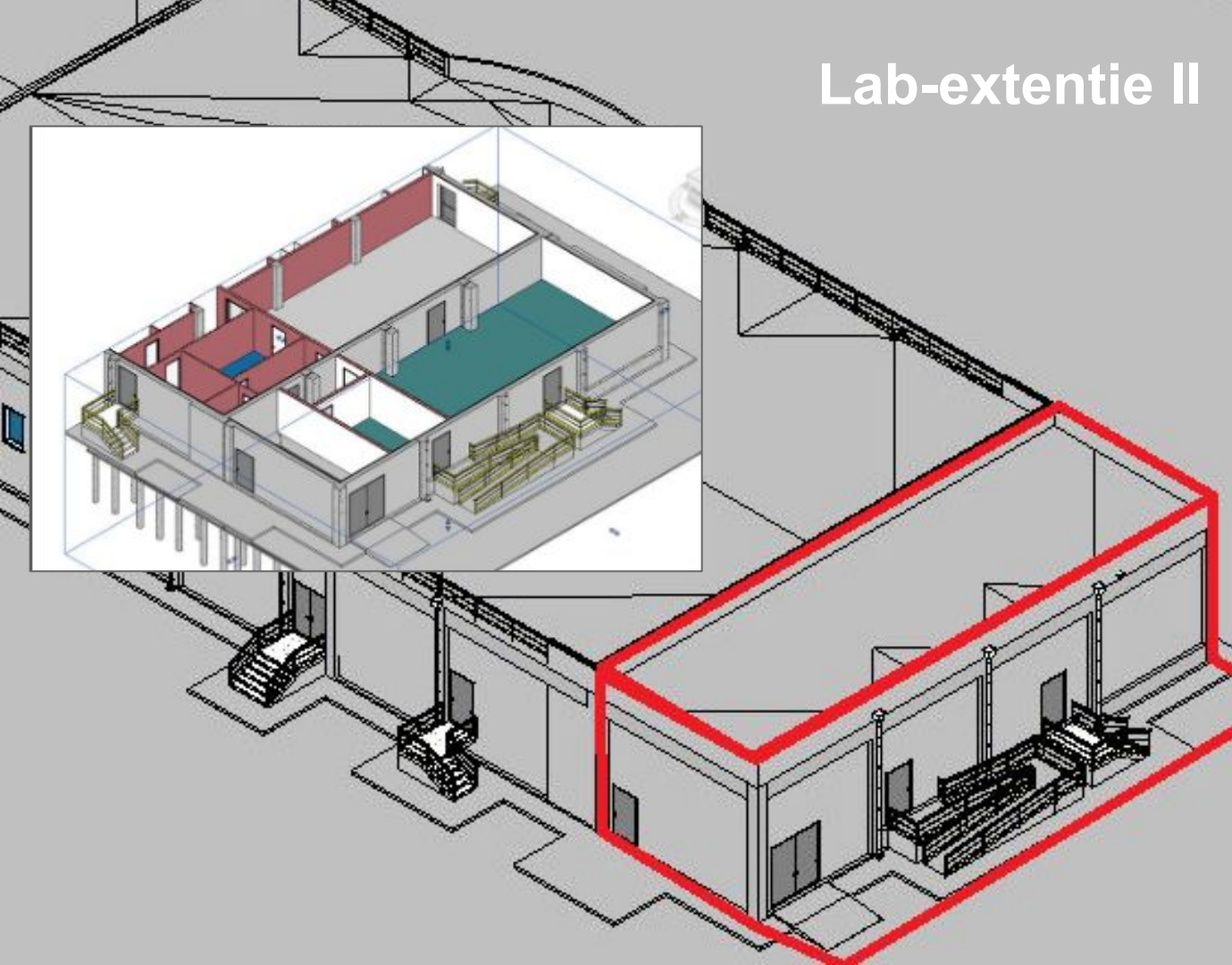
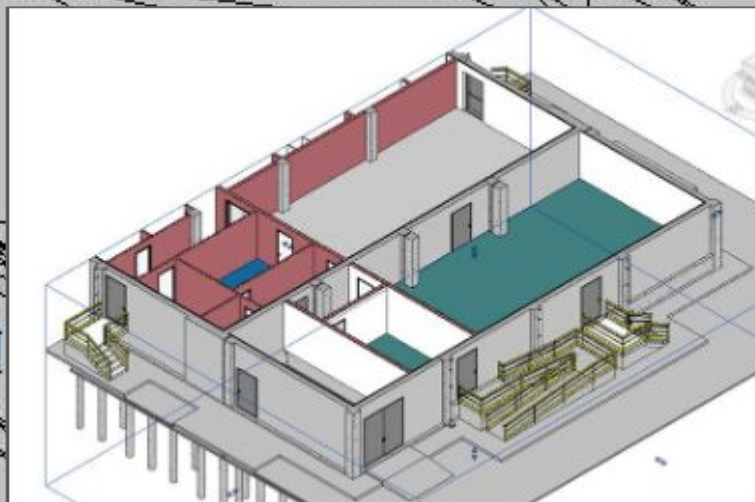


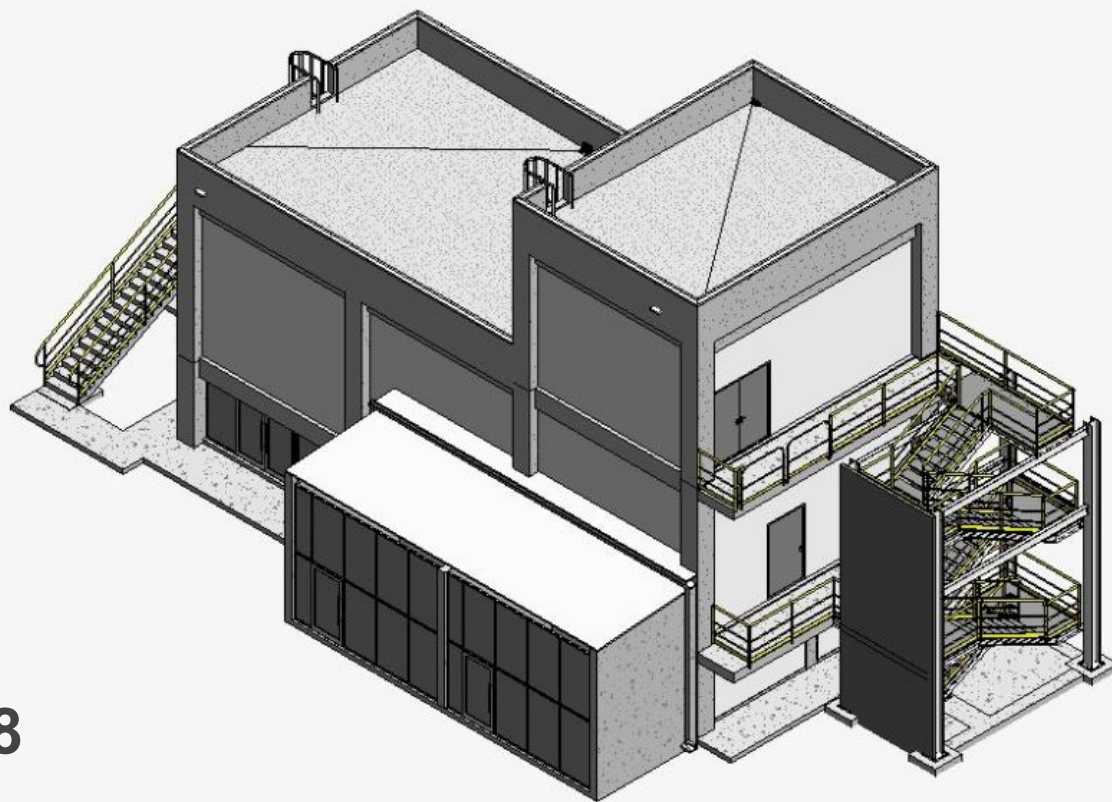

Gebouwen huidige site



Lab-extentie I

Lab-extentie II





Substation 8

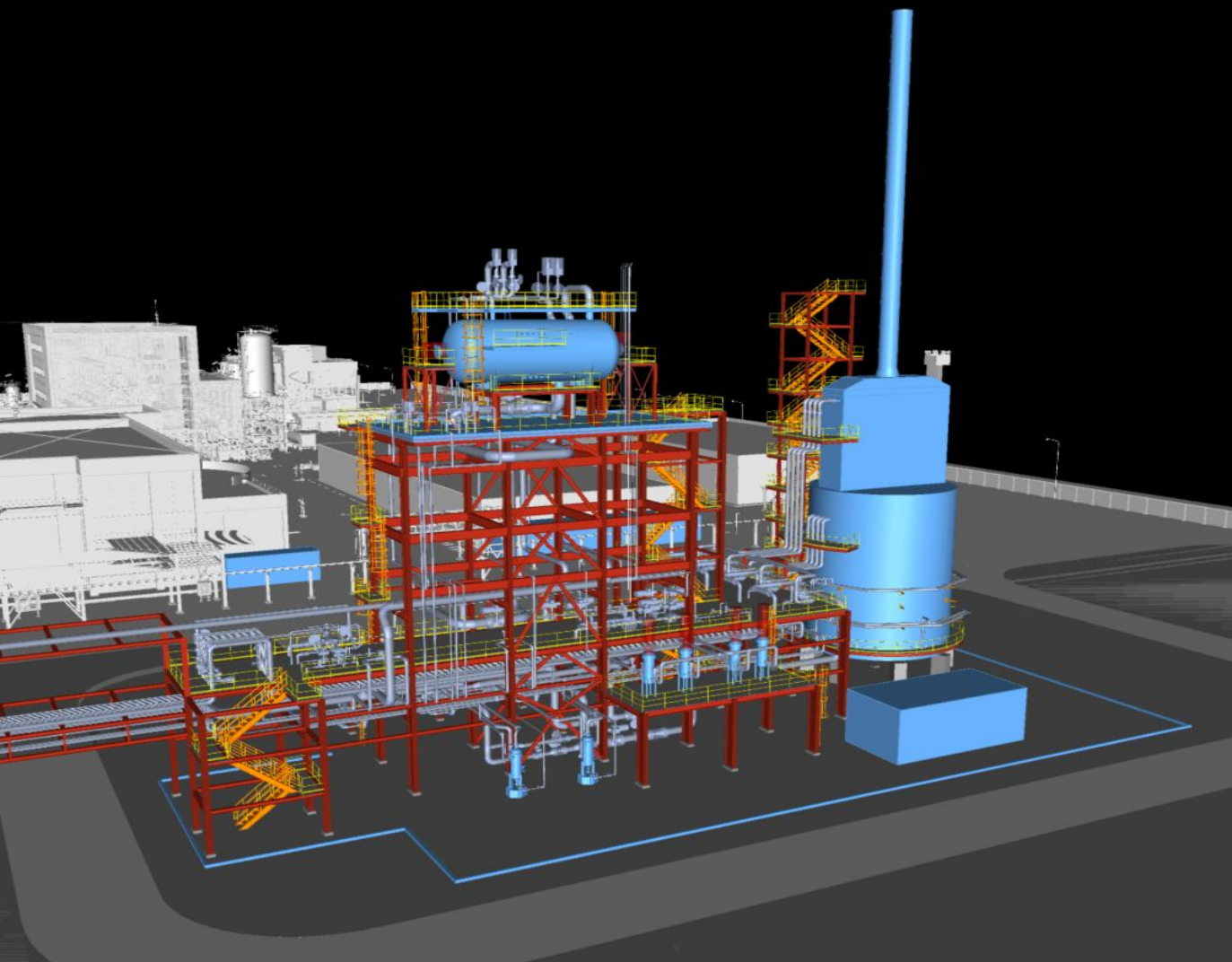


**Bouwwerken niet
zijnde gebouwen
huidige site**

Overview



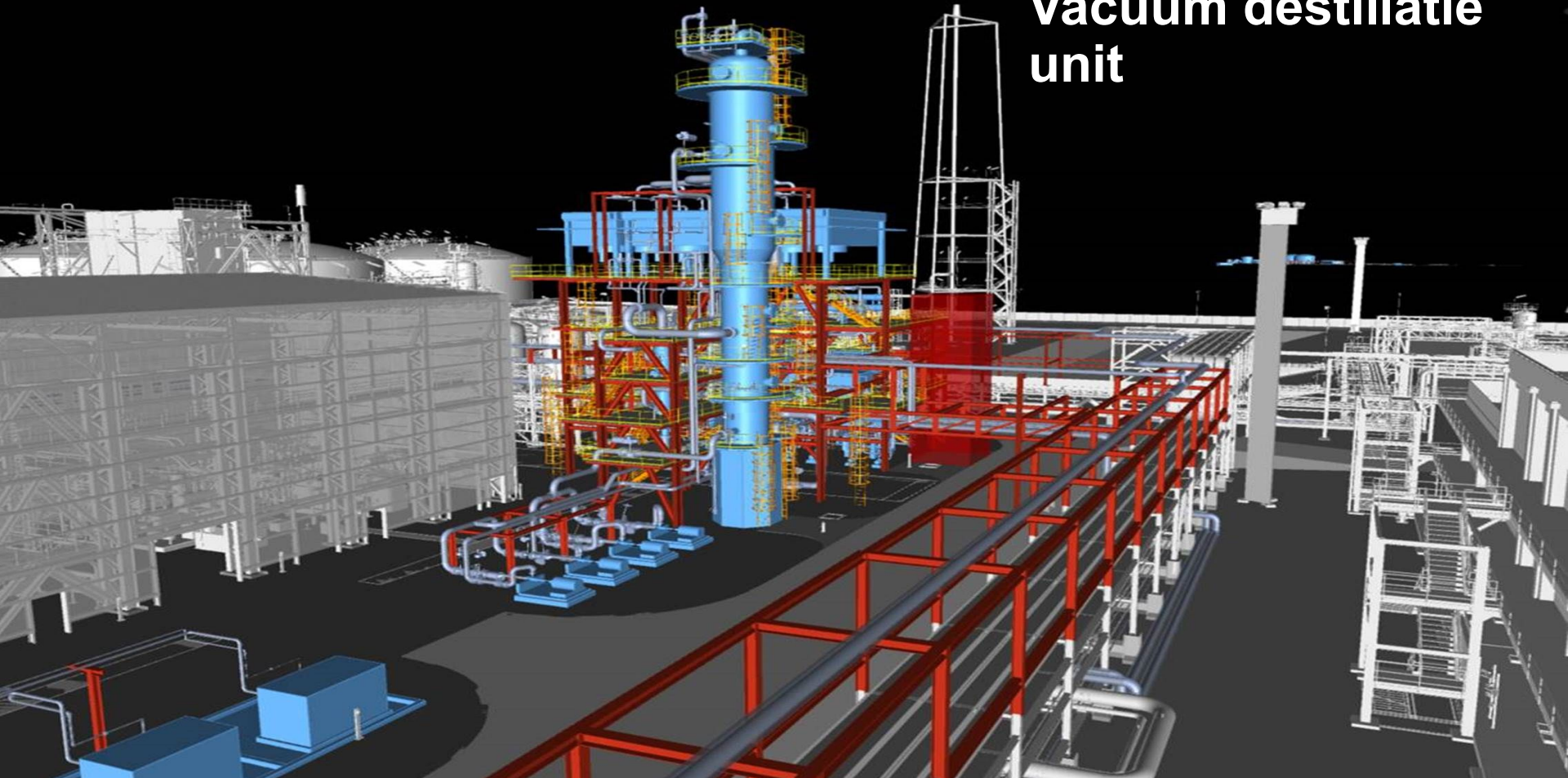
Hot oil furnuis

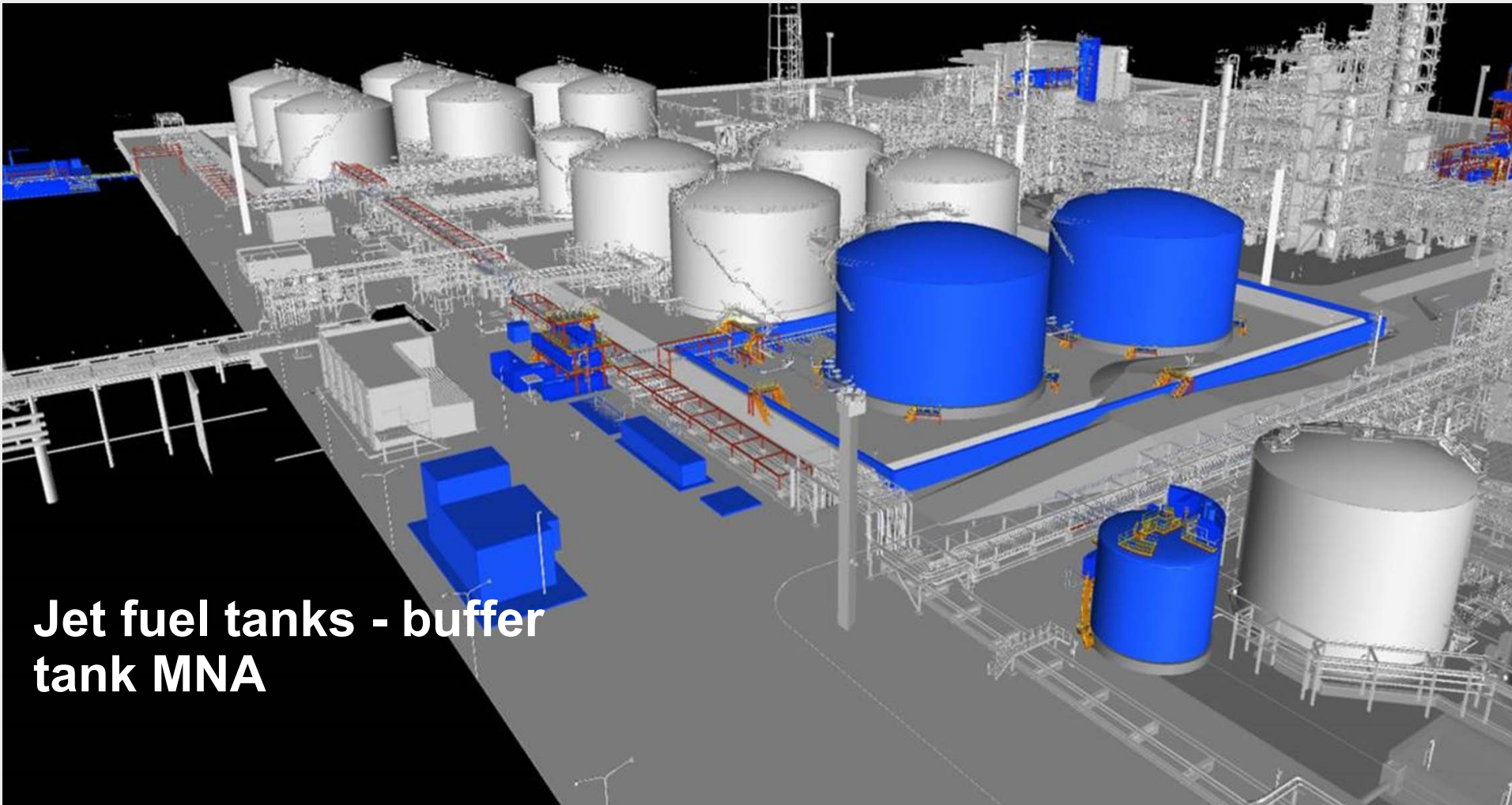


jet fuel unit



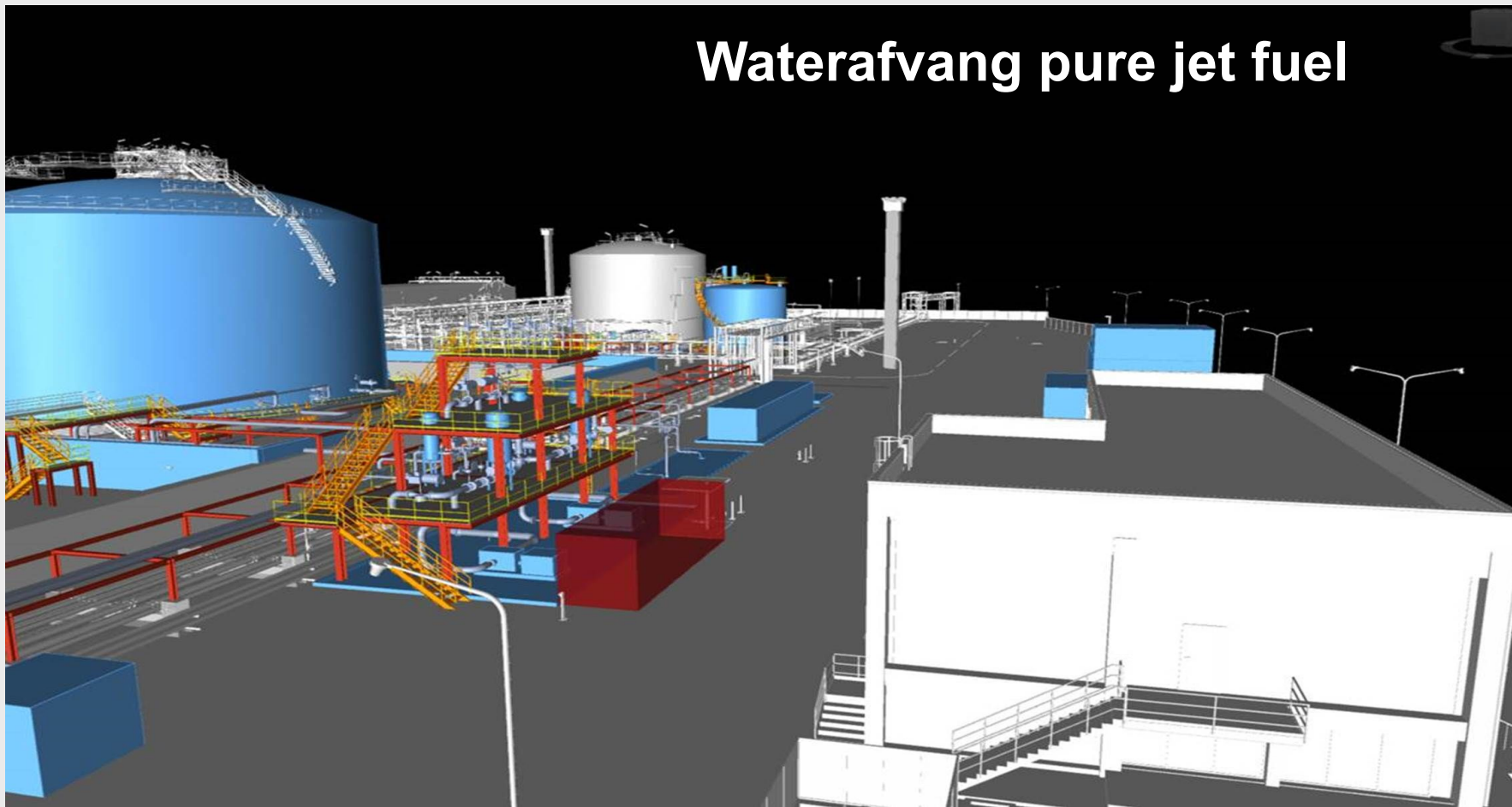
Vacuum destillatie unit

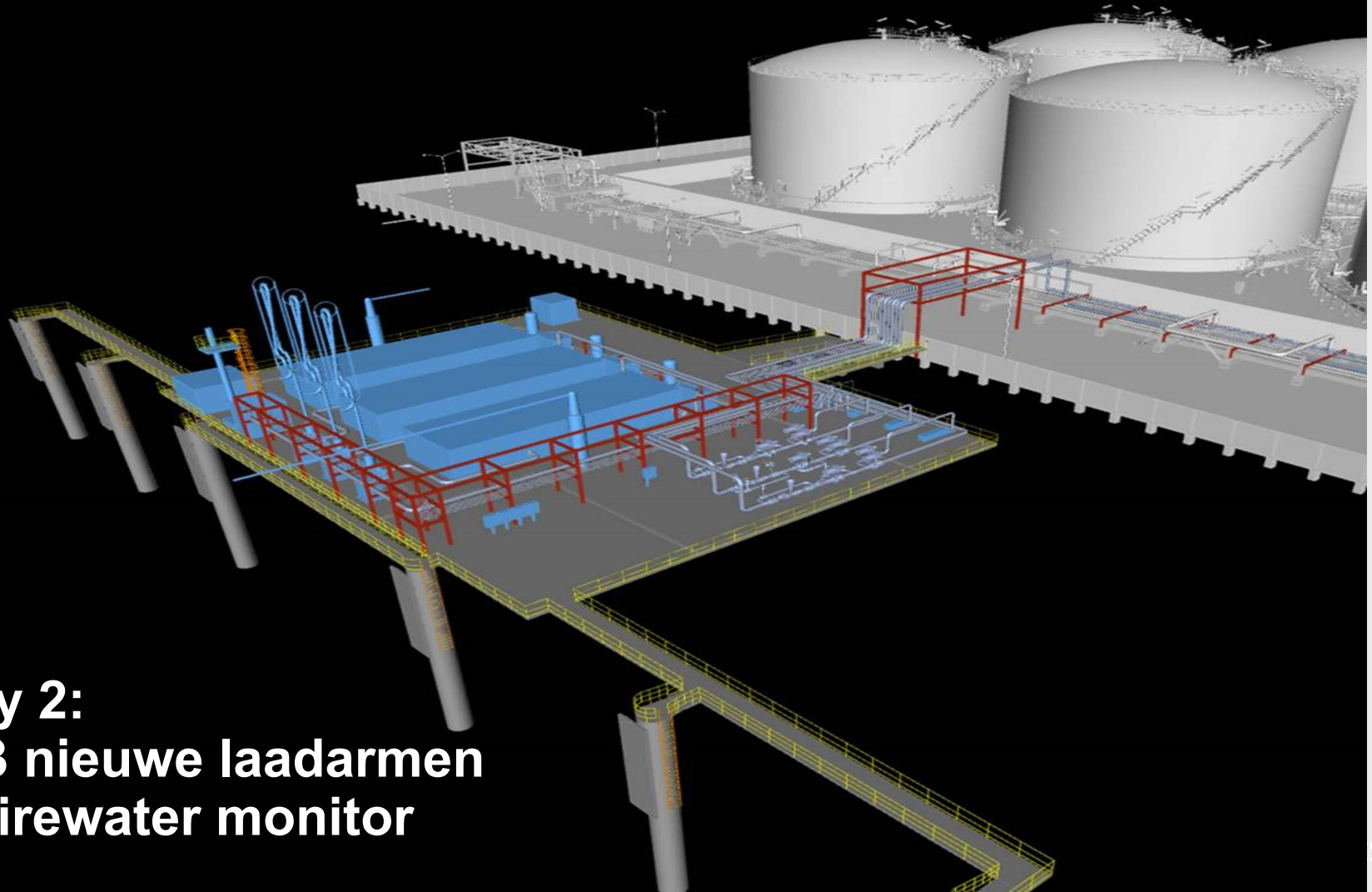




**Jet fuel tanks - buffer
tank MNA**

Waterafvang pure jet fuel





Jetty 2:

- 3 nieuwe laadarmen
- firewater monitor

The background of the slide is a close-up photograph of water with gentle ripples, creating a textured blue surface. The colors range from a deep navy blue at the bottom to a lighter, almost white-blue at the top.

Thank you