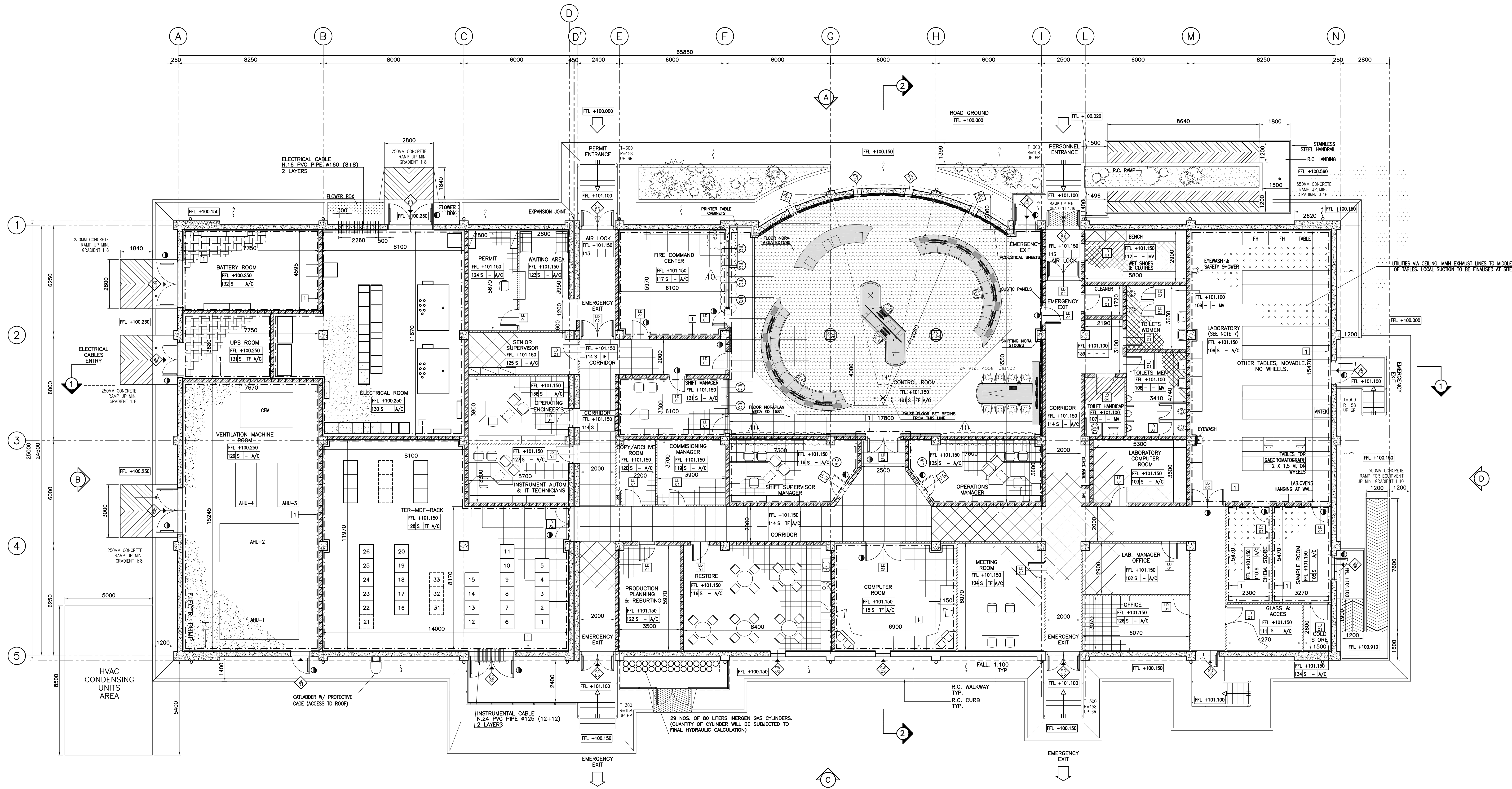
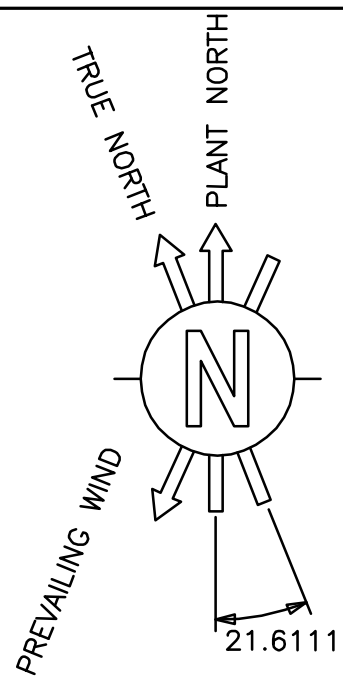


This present document or drawing is property of Technip ITALY S.p.A. and shall not, under any circumstances, be totally or partially, directly or indirectly, reproduced, copied, disclosed or used without its prior written consent. for any purpose and in any way other than that for which it is specifically furnished or outside the extent of the agreed upon right of use.

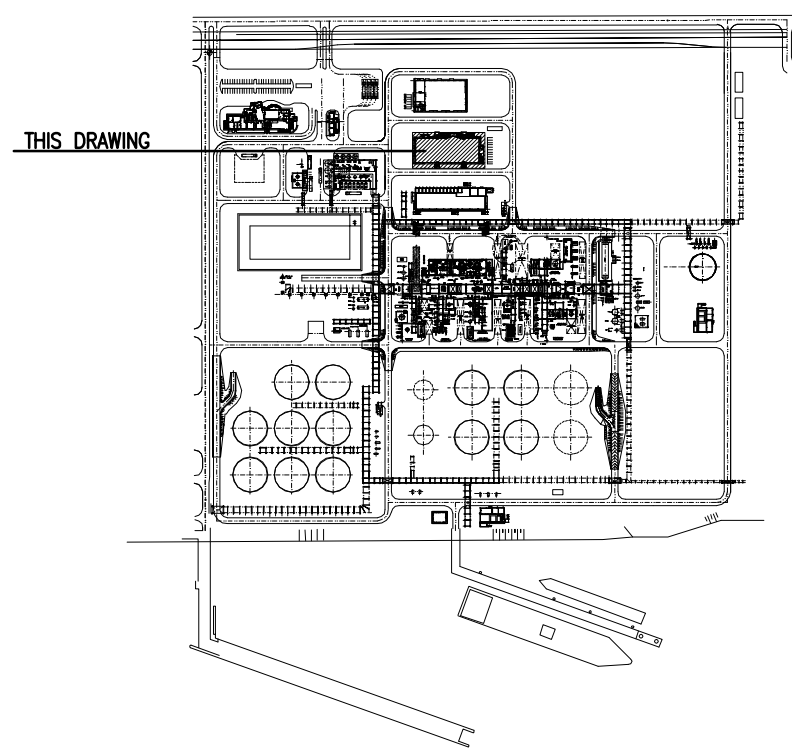
AO



GROUND FLOOR

- NOTES**
- ALL DIMENSIONS ARE EXPRESSED IN MILLIMETERS
 - THE ELEVATION 100.000 CORRESPONDS TO (HIGH POINT OF PAVING) AND IS EQUIVALENT +5.20m NAP
 - THE ROOF, THE WALLS AND ELEVATED FLOOR OF THE BUILDING SHALL PROVIDE TWO HOURS FIRE RESISTANCE
 - THE STAIRWELLS SHALL BE PROVIDED OF EMERGENCY LIGHTING.
 - THE COMPLETE SYSTEM INSULATION TO BE 160mm THICK
 - THE U-VALUE (MEASURE OF THE RATE OF HEAT LOSS THROUGH A MATERIAL) ARE:
WALLS: 0.27 W/M²K
ROOFING: 0.24 W/M²K
EXTERNAL PAVING/GROUND: PAVING: 0.24 W/M²K WINDOWS: 1.1 W/M²K, WITH MAX 0.4 SOLAR SHADING FACTOR
 - THE LABORATORY SYSTEMS, EQUIPMENT AND FURNITURES ARE PENDING.
 - THE ELECTRICAL AND INSTRUMENT EQUIPMENT ARRANGEMENT AND DIMENSION SHOWN ARE INDICATIVE. REFER TO THE ELECTRICAL AND INSTRUMENTATION DRAWINGS FOR FINAL INFORMATION

- LEGEND**
- REINFORCED CONCRETE COLUMNS/WALL
 - EXTERNAL CONCRETE WALL THK.300
PLASTERED & PAINTED
PANEL IN MINERAL WOOL/OPSUM BOARD
THK 160mm, PAINTED
 - INTERNAL MASONRY WALL THK.200
PLASTERED & PAINTED BOTH SIDES
 - INTERNAL MASONRY WALL THK.100
PLASTERED & PAINTED BOTH SIDES
 - GALVANIZED PAINTED BLAST RESISTANT
STEEL DOOR
 - ALUMINUM FRAME & LAMINATED PANELS DOOR
 - ANODIZED ALUMINUM DOOR
 - SURFACE COMPARTMENTATION
 - FIRE RESISTANCE IN HOURS OF FIRE RATED
WALL CONSTRUCTION
 - FIRE RATING PARTITION
 - DOOR FIRE RATING
 - HOSE REELS
 - ACCESS OPENING
 - CEMENT MORTAL WITH HARDENER
 - ACID PROOF TILES
 - EPOXY COATING
 - UNGLAZED NON SLIP CERAMIC TILES
 - GRANITE GRES TILES 30x30
 - GRANITE GRES TILES 60x60
 - FALSE FLOOR 60x60
 - ASPHALT AREA
 - CEMENT SAND SCREED THK. 75mm
WITH EPOXY SEALANT FINISHING



2305-175-DW-2051-03-01		OPERATION CENTER - FINISHINGS & DOORS SCHEDULE				
2305-175-DW-2051-02-02		OPERATION CENTER - ELEVATIONS				
2305-175-DW-2051-02-01		OPERATION CENTER - SECTIONS				
2305-175-DW-2051-01-02		OPERATION CENTER - ROOF PLAN				
Drawing No		DESCRIPTION				
REFERENCE DRAWINGS						
10	30 OCT 2009	REISSUED FOR CONSTRUCTION REVISOR PER CLIENT REQUEST CONTROL ROOM'S WINDOWS DELETION	C. PLACCO	P.J.A. MONTANA	A.FRATTI	J.D.LOPEZ
9	14 OCT 2009	REISSUED FOR CONSTRUCTION REVISOR COMMENTS MODIFIED	C. LOPEZ	P.J.A. MONTANA	A.FRATTI	J.D.LOPEZ
8	27 AUG 2009	REISSUED FOR CONSTRUCTION REVISED AS SHOWN	C. PLACCO	P.J.A. MONTANA	A.FRATTI	A.GOVANI
7	4 AUG 2009	REISSUED FOR CONSTRUCTION REVISED AS SHOWN	C. PLACCO	P.J.A. MONTANA	A.FRATTI	A.GOVANI
6	27 JULY 2009	REISSUED FOR CONSTRUCTION REVISED AS SHOWN	C. PLACCO	P.J.A. MONTANA	A.FRATTI	A.GOVANI
5	06 JULY 2009	REISSUED FOR CONSTRUCTION REVISED AS SHOWN	C. PLACCO	P.J.A. MONTANA	A.FRATTI	A.GOVANI
4	24 JUNE 2009	REISSUED FOR CONSTRUCTION REVISED AS SHOWN	C. PLACCO	P.J.A. MONTANA	A.FRATTI	A.GOVANI
3	05 MAY 2009	REISSUED FOR CONSTRUCTION REVISED AS SHOWN	C. PLACCO	P.J.A. MONTANA	A.FRATTI	A.GOVANI
2	17 APR 2009	ISSUED FOR CONSTRUCTION REVISED AS SHOWN	C. PLACCO	P.J.A. MONTANA	A.FRATTI	A.GOVANI
1	26 NOV 2008	ISSUED FOR CONSTRUCTION	R. TANI	P.J.A. MONTANA	A.FRATTI	A.GOVANI
0	25 SEP 2008	ISSUED FOR CONSTRUCTION	R. TANI	P.J.A. MONTANA	A.FRATTI	A.GOVANI
A	25 AUG 2008	ISSUED FOR REVIEW	R. TANI	S. DE LUCA	A.FRATTI	A.GOVANI
REV	DATE	DESCRIPTION	PREP	CHKD	APPR	AUTH

NESTE OIL				Technip				
				TECHNIP ITALY S.p.A.				
ROTTERDAM NExBTL PLANT								
OPERATION CENTER								
GROUND FLOOR								
SCALE		Technip Drawing No						
1:100	2305 Project	175 Unit	DW Doc.Type	20 Disc	51 Subj	01 Ser.No	1 of 2 Page	10 Rev.
NESTE-OIL Drawing No								
-								
Cad Model								