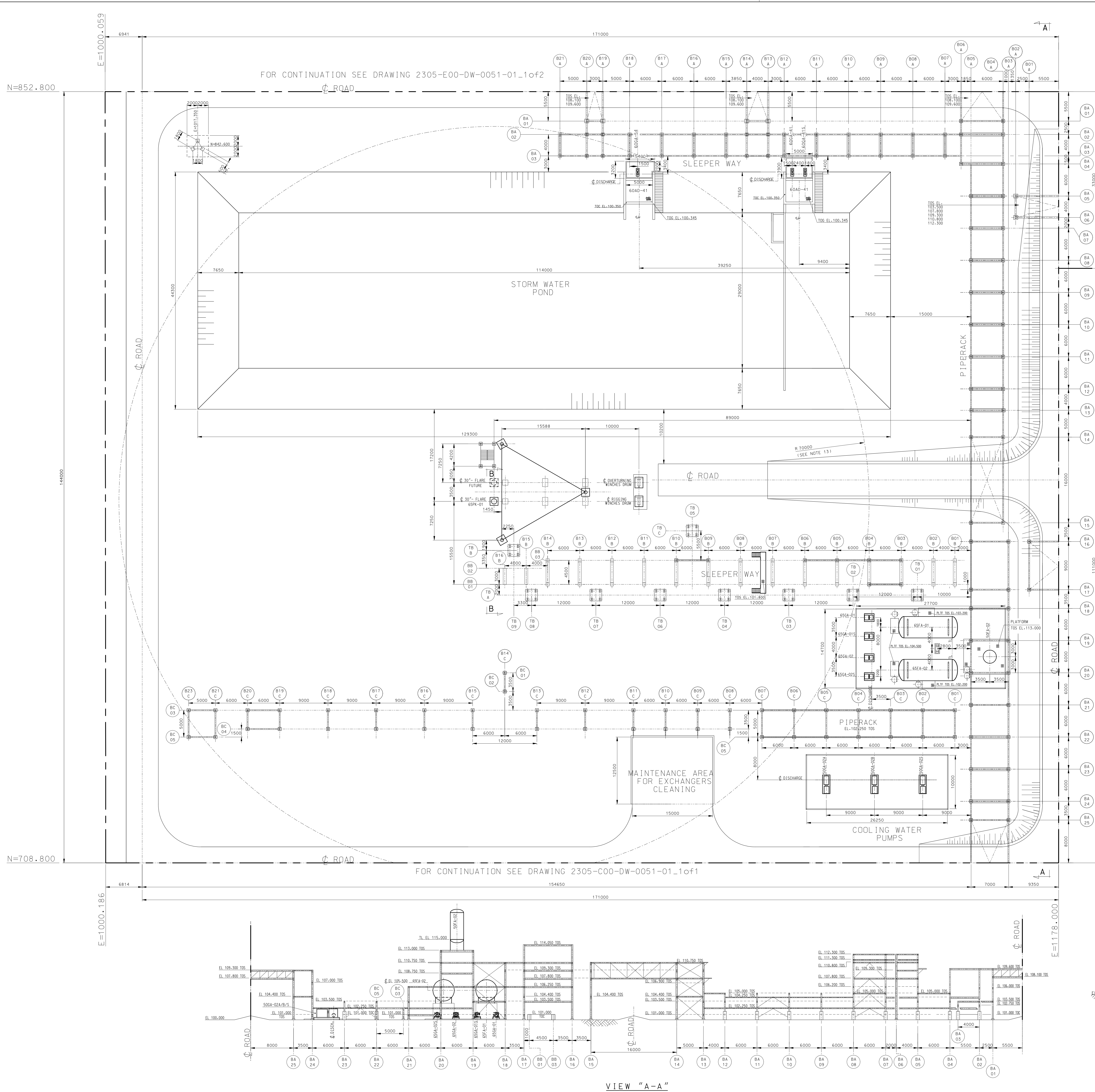
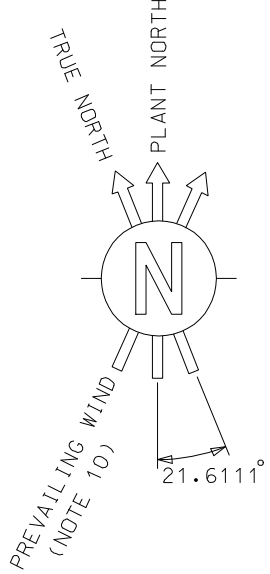


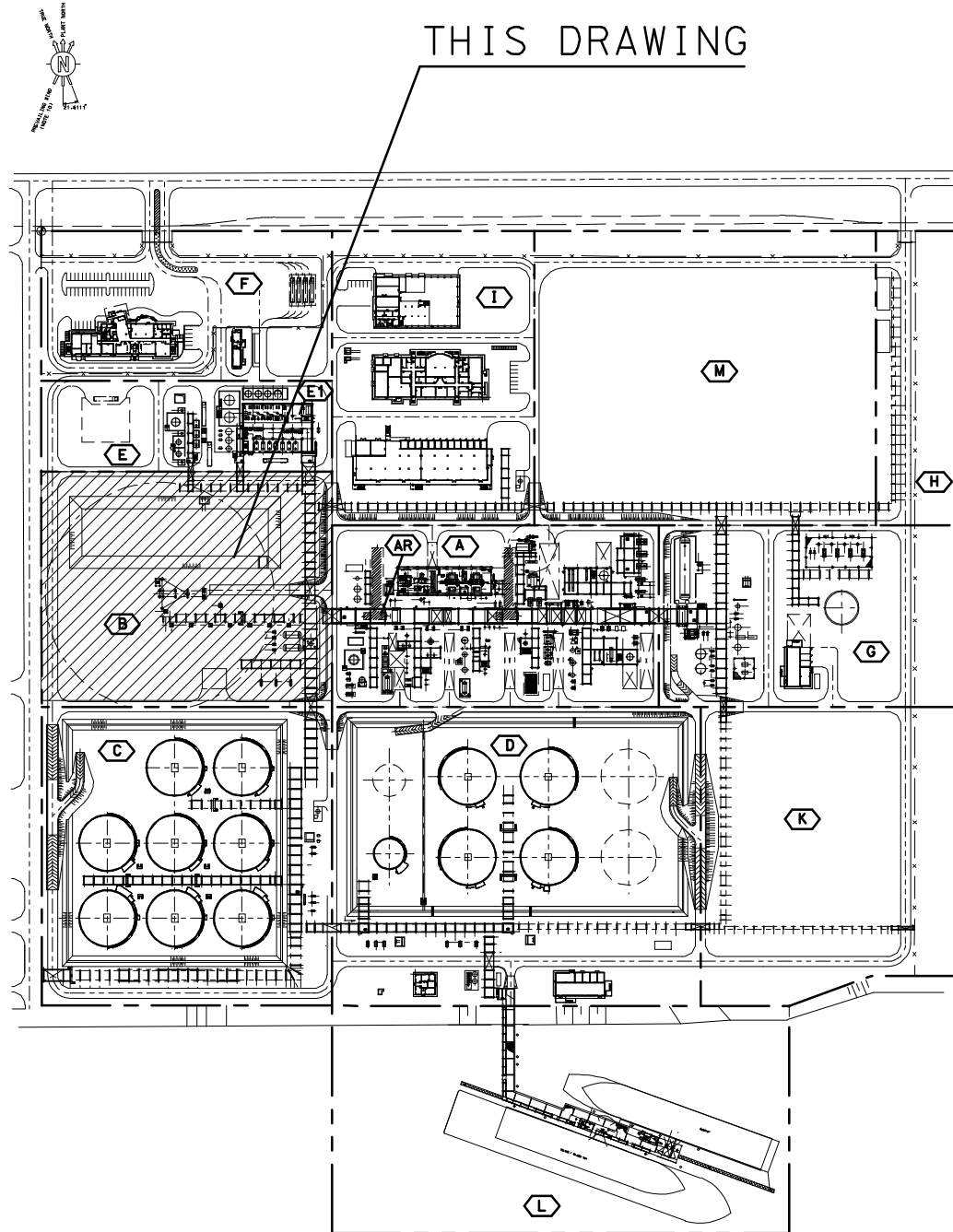
The present document or drawing is property of TECHNIP ITALY S.p.A. and shall not, under any circumstances, be totally or partially directly or indirectly, transferred, reproduced, copied, disclosed or used, without its prior written consent, for any purpose and in any way other than that for which it is specifically furnished or outside the extent of the agreed upon right of use.



EQUIPMENT NO.	SERVICE	NOTE
50GA-02A	COOLING WATER CIRCULATION PUMP	
50GA-02B	COOLING WATER CIRCULATION PUMP	
50GA-02S	COOLING WATER CIRCULATION PUMP	
50FA-02	COOLING WATER SURGE TANK	
60AD-41	STORM WATER POND	
60GA-41	STORM WATER POND PUMP	
60GA-41S	STORM WATER POND PUMP	
60GA-54	STORM WATER POND PUMP	
65PK-01	FLARE PACKAGE	
65FA-01	FLARE KNOCK OUT DRUM	
65FA-02	WET FLARE KNOCK OUT DRUM	
65GA-01	FLARE K.O.DRUM DRAIN PUMP	
65GA-01S	FLARE K.O.DRUM DRAIN PUMP	
65GA-02	WET FLARE K.O.DRUM DRAIN PUMP	
65GA-02S	WET FLARE K.O.DRUM DRAIN PUMP	



- GENERAL NOTES
- COORDINATES ARE REFERRED TO PLANT NORTH. THE ORIGIN OF THE SYSTEM IS THE OUTER NORTH-WEST CORNER OF THE PLANT (N=443093 / E=62008) CORRESPONDING TO N=1000.000 / E=1000.000
 - ALL DIMENSIONS AND ELEVATIONS ARE IN MILLIMETERS AND 360° DEGREES CIRCLE UNLESS OTHERWISE INDICATED
 - ALL COORDINATES ARE IN METERS
 - THE ELEVATION 100.000 CORRESPONDS TO (HIGHT POINT OF PAVING) AND IS EQUIVALENT +5.20 m. N.L.P.
 - T.L. TANGENT LINE EQUIPMENT
T.O.C TOP OF CONCRETE
C.C CENTER LINE
T.O.S TOP OF STEEL
H.P.P. HIGHEST PAVING POINT
E.L. ELEVATION
F.S. FIXED SADDLE
 - DENOTES BOUNDARY LIMIT
 - X --- DENOTES FENCE LIMIT
 - DENOTES ZONE LIMIT
 - DENOTES AREA LIMIT
 - PREVAILING WIND DIRECTION SOUTH WEST
 - DENOTES ROAD CROSSING
 - DENOTES LIGHTING TOWER
 - THE RADIUS OF 70 mt. IS REFERRED TO THE MINIMUM DISTANCE BETWEEN THE FLARE STACK (65CB-01) AND THE CLOSEST FENCE POINT
- THE STERILE RADIUS IS 50 mt. FROM THE FLARE STACK (65CB-01)
- EQUIPMENT HANDLING FLAMMABLE FLUIDS NOT TO BE LOCATED WITHIN 60 mt. FROM FLARE STACK (65CB-01)



KEY PLAN

NO.	DESCRIPTION
2305-000-04-1331-01	DETAILED KEY PLAN ZONE "B"
2305-000-04-1331-01	OVERALL KEY PLAN
2305-000-04-0051-02	OVERALL PLOT PLAN
Drawing No.	DESCRIPTION
REFERENCE DRAWINGS	

OA	15-SEP-2011	AS BUILT	A.LONARDOZZI	F.RAMP1	F.BARONE	J.D.LOPEZ
REV	DATE	DESCRIPTION	PREP	CHK	APPR	AUTH
NESTÉ OIL						
TECHNIP ITALY S.p.A.						
ROTTERDAM - NExBTL PLANT						
ZONE "B"						
DETAILED PLOT PLAN AND ELEVATIONS						
SCALE						
1:250						
Project Unit Doc.Type Disc Subj Ser.No Page Rev.						
2305 800 DW 00 51 01 1 of 1 0A						
NESTÉ-OIL Drawing No						
Cad Model						
TECHNIP ITALY S.p.A. - 00148 ROMA - Viale Castello della Magonia, 68						

File name: 2305-000-DW-0051-01_1.dwg, 0A.dwg
CAD Model: 2305-000-DW-0051-01_1.dwg, 0A.dwg