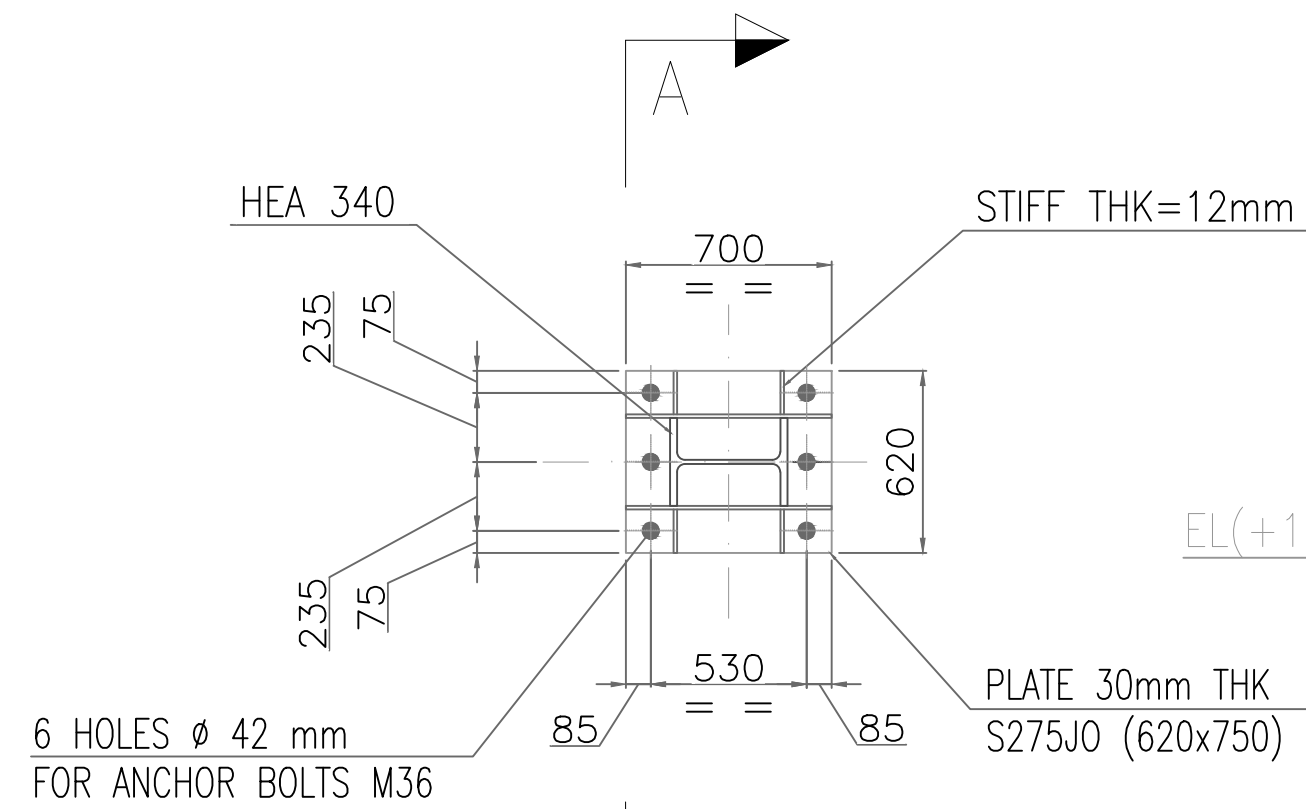
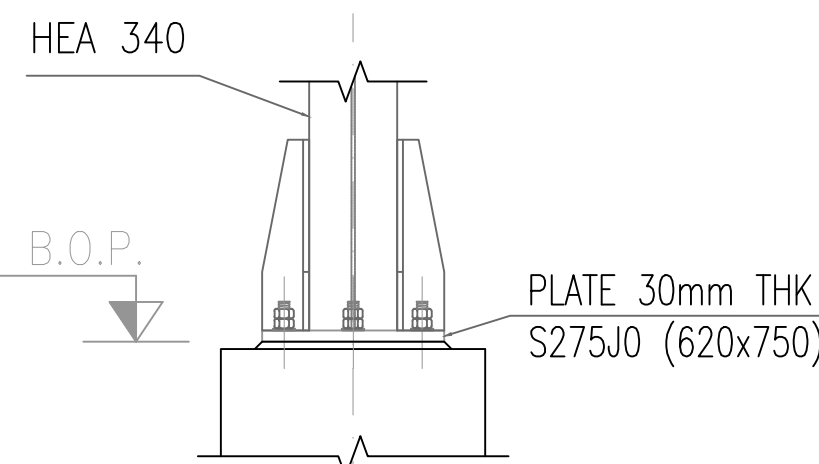


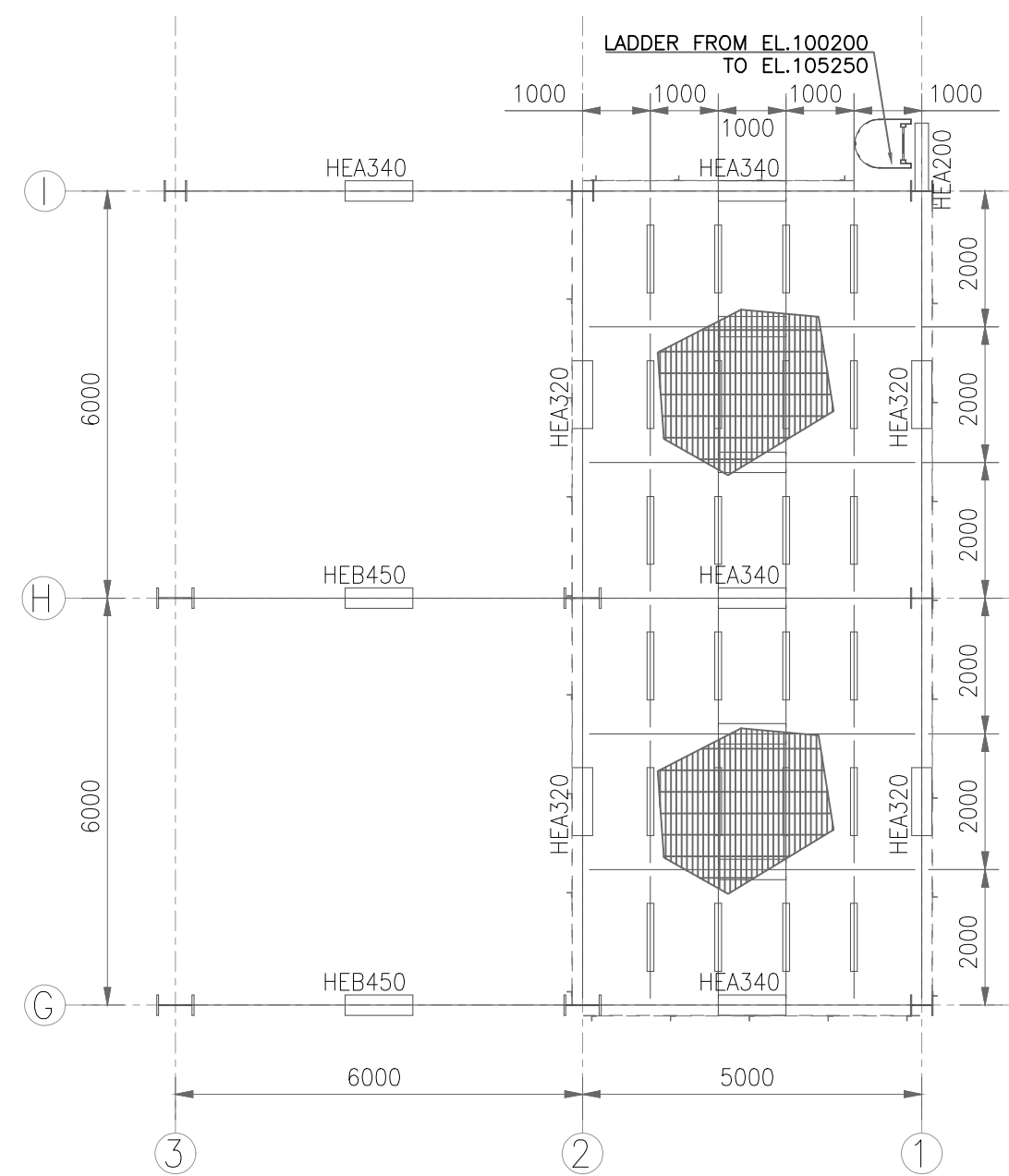
PLAN AT ELEV.103000
SCALE 1:100



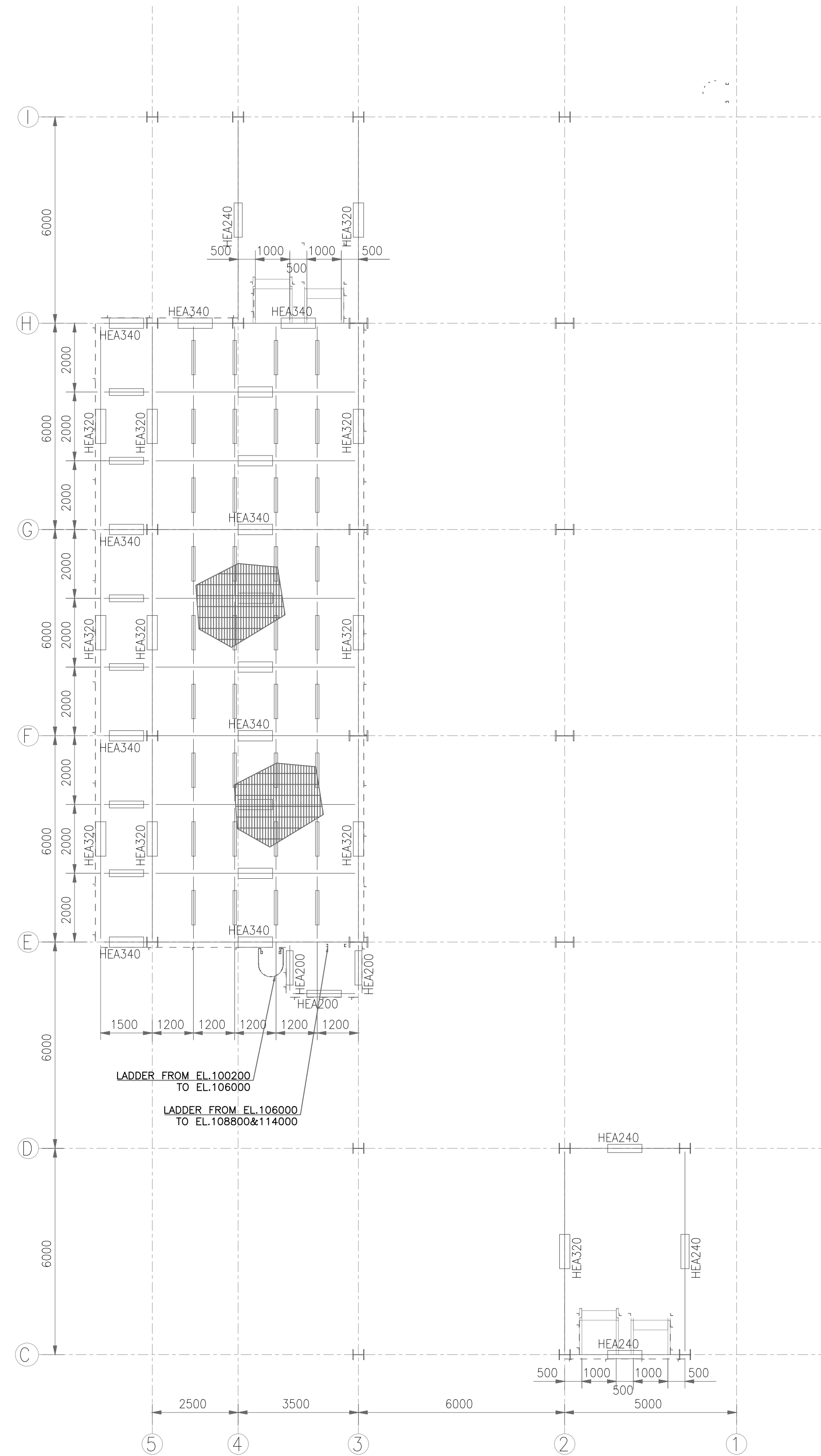
DETAIL 1



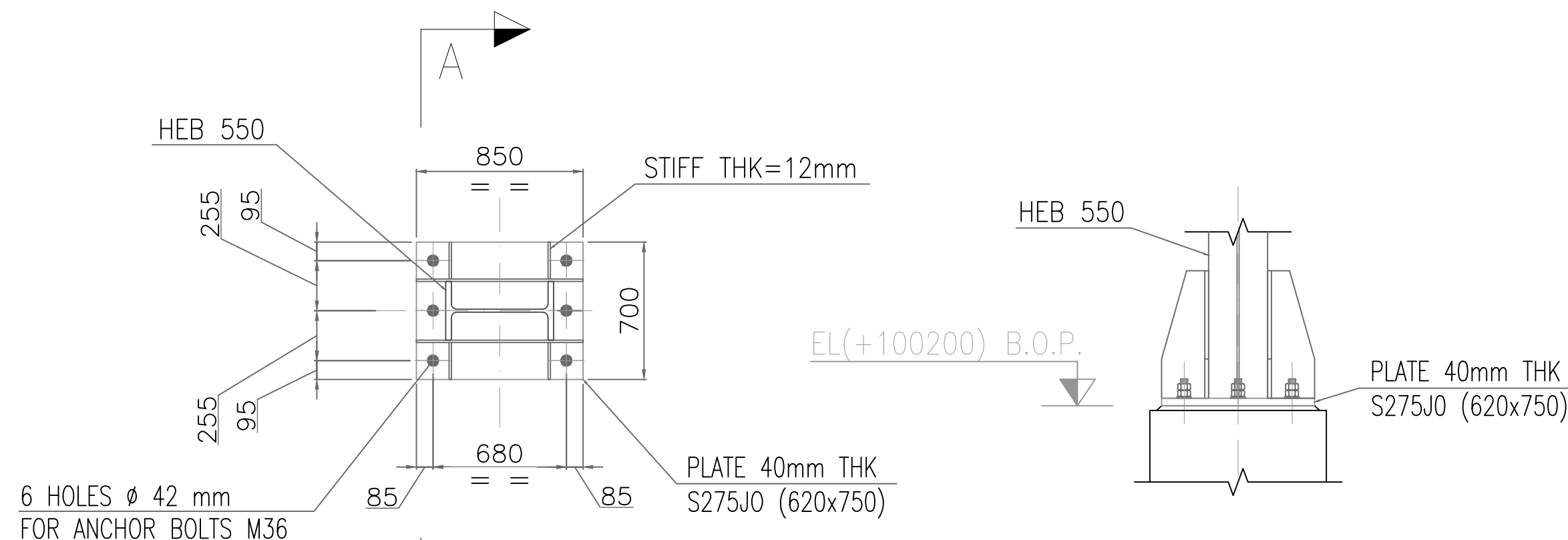
SECTION A-A



PLAN AT ELEV.105250
SCALE 1:100



PLAN AT ELEV.106000
SCALE 1:100



DETAIL 2

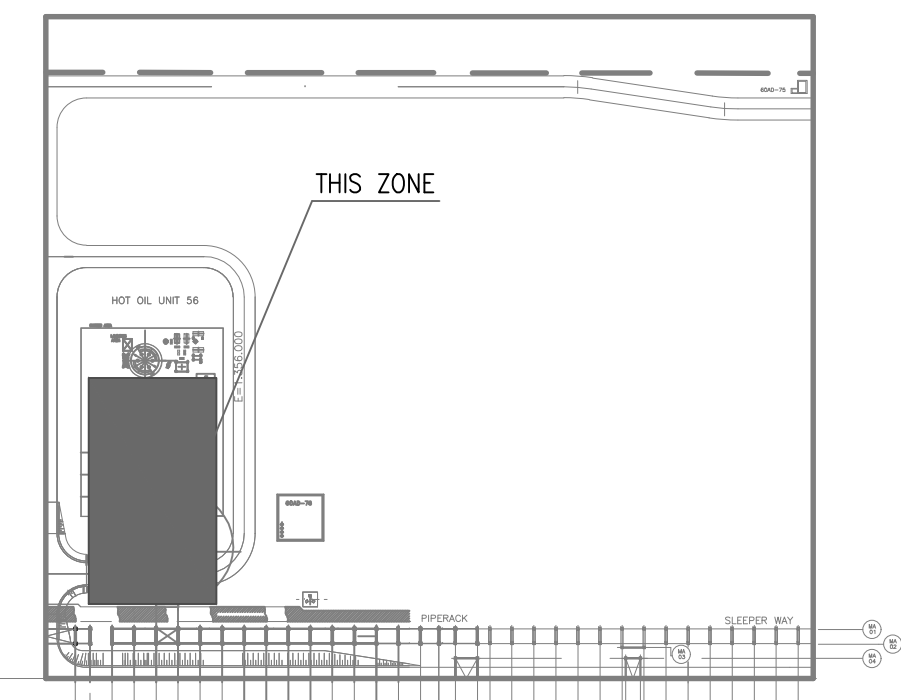
PLAN

SECTION A-A

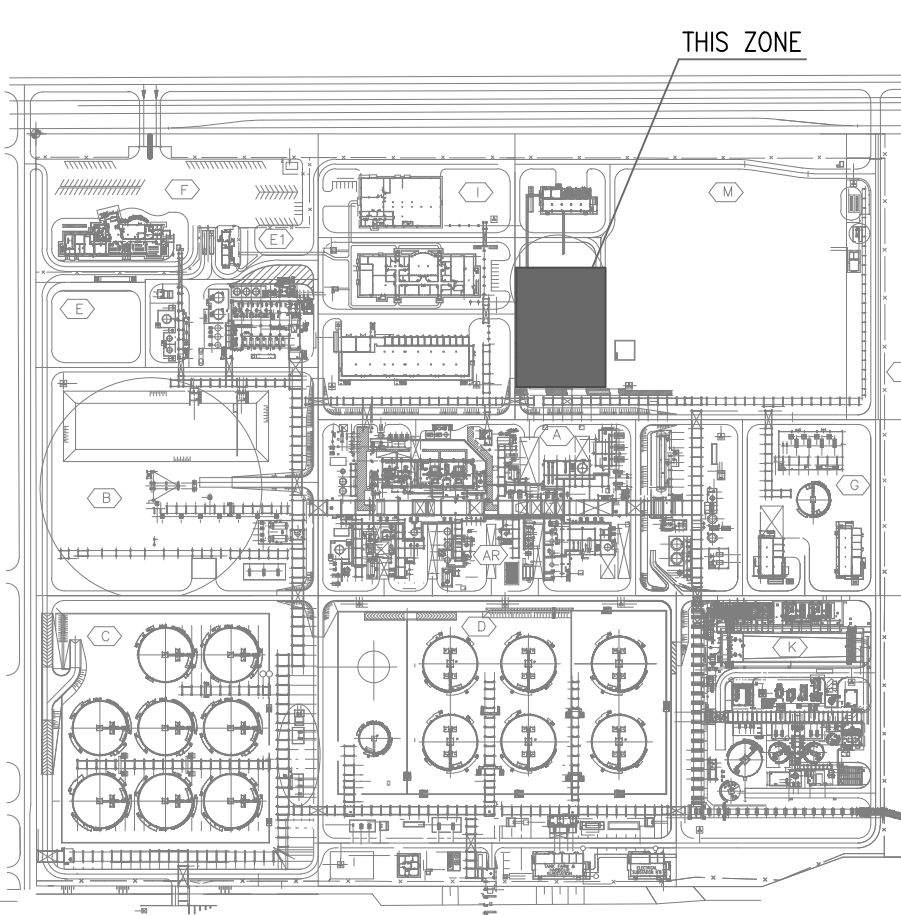
GENERAL NOTES

- COORDINATES ARE REFERRED TO PLANT NORTH. THE ORIGIN OF THE SYSTEM IS THE OUTER NORTH-WEST CORNER OF THE PLANT (N=443093 / E=62008) CORRESPONDING TO N=1000.000 / E=1000.000
- ALL DIMENSIONS AND ELEVATIONS ARE IN MILLIMETERS AND 360° DEGREES CIRCLE UNLESS OTHERWISE INDICATED
- ALL COORDINATES ARE IN METERS
- THE ELEVATION 100.000 IS EQUIVALENT +5.20 m. N.A.P. IN PROCESS AREA (ZONE "A") THE HIGHT POINT PAVING ELEVATION CORRESPOND TO 101.300

KEY PLAN



ZONE "M"



OVERALL KEY-PLAN

080871C-M00-DW-0051-001	ZONE "M" - DETAIL PLOT PLAN
080871C-000-STC-1890-000	CIVIL AND STRUCTURAL - STEEL STRUCTURES CONSTRUCTION STANDARD
080871C-000-DW-1802-001	STRUCTURAL STEEL WORKS - GENERAL NOTES

Drawing No	DESCRIPTION
080871C-M00-DW-0051-001	ZONE "M" - DETAIL PLOT PLAN

REFERENCE DRAWINGS

CONFIDENTIAL

REV	DATE	DESCRIPTION	PREP	CKD	APPR/AUTH
1	14 Jan. 2021	ISSUED FOR PERMITTING	SOLUANN	WILKSON	UNIKAL
A	26 Nov. 2020	ISSUED FOR REVIEW	AROWANO	ABINDI	ADZULKE

NESTE

ROTTERDAM SITE DEVELOPMENT
DEFINITION PHASE
NESTE

ZONE "M"
M56-STR-100
STEEL STRUCTURES
PLANS FROM ELEVATION 100200 TO 106000

SCALE	Drawing No	Page	Rev.
1:100	080871C M56 DW 18 22 002 Project Unit Doc.Type Ser.No	2 of 5	1

Neste Drawing No

TPIT CAD MODEL: 080871C-M56-DW-1822-002-02_1.dwg