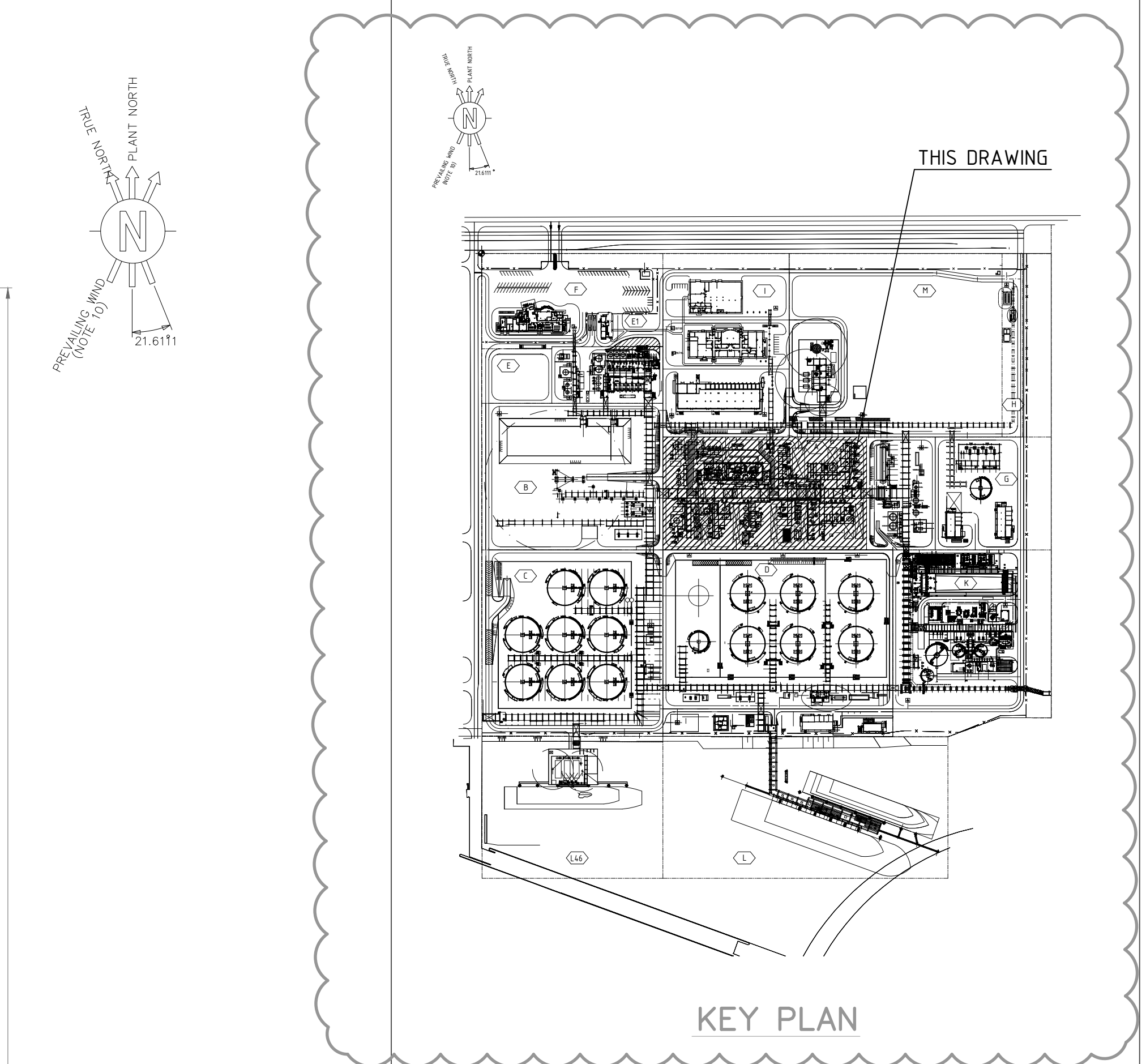
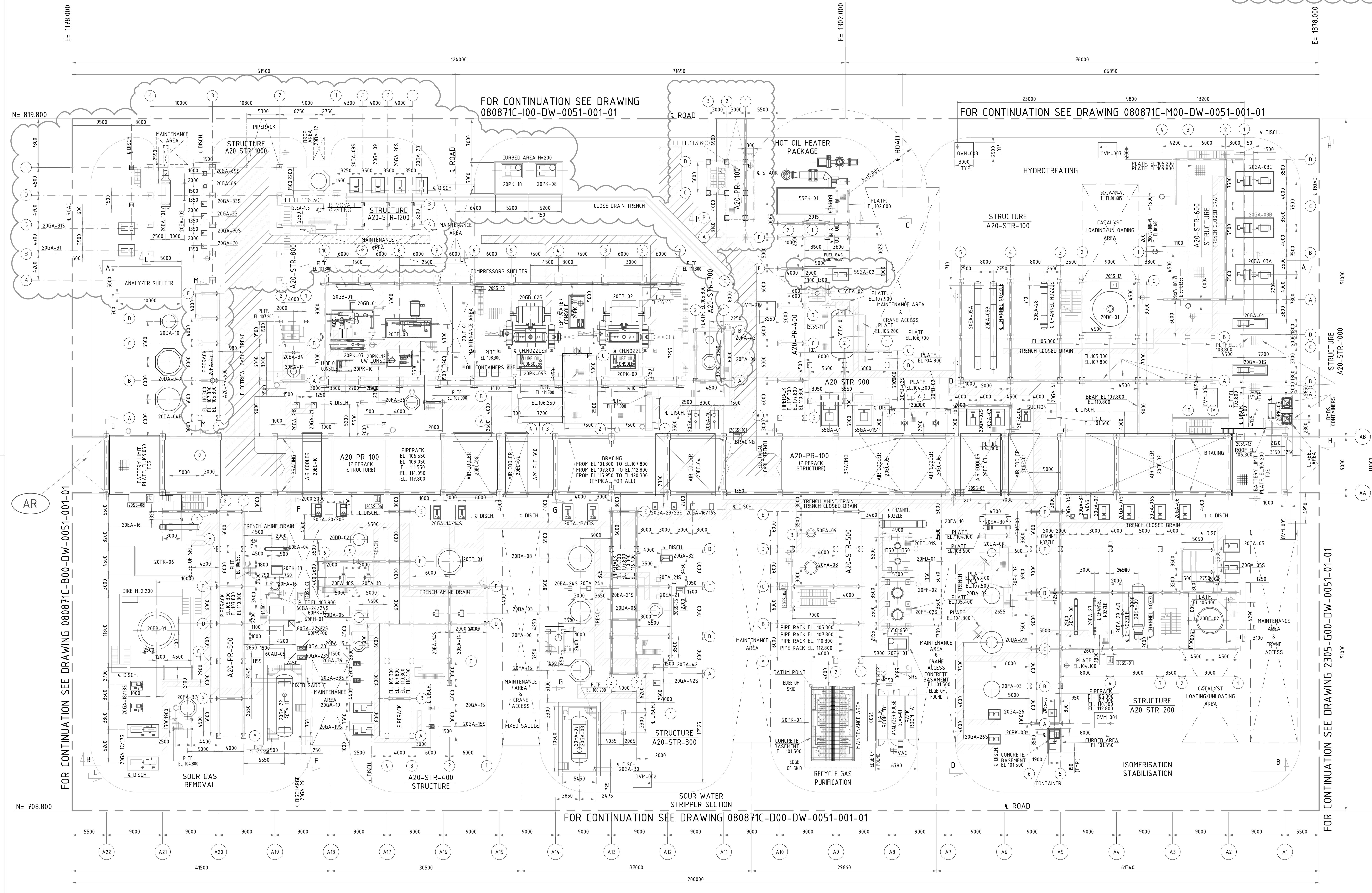


| EQUIPMENT NO. | SERVICE | NOTE | EQUIPMENT NO. | SERVICE | NOTE | EQUIPMENT NO. | SERVICE | NOTE |
|---------------------|--|---------------------|----------------|---|--------------------------------------|---------------|---|---------------------|
| 20A5-01 | ANALYZER HOUSE | | 20EA-23 | SOUR WATER STRIPPER INTERNAL CONDENSER | NOT SHOWN INTO PLOT PLAN | 20GA-13-S | AMINE REGENERATOR FEED PUMPS | INCLUDED IN 20PK-03 |
| 200C-01 | HYDROTREATING REACTOR | | 20EA-24-S | STRIPPED WATER COOLER | | 20GA-14-S | AMINE REGENERATOR BOTTOMS PUMPS | |
| 200C-02 | ISOMERISATION REACTOR | | 20EA-25 | HOT WATER HEAT EXCHANGER | | 20GA-15-S | AMINE REGENERATOR REFLUX PUMPS | |
| 200A-01 | ISOMERISATION FEED STRIPPER | | 20EA-26 | STABILIZATION FEED HEATER | | 20GA-16-S | WASH WATER PUMPS | |
| 200A-02 | DIESEL STABILIZATION COLUMN | | 20EA-27 | BIONAPHTA STABILIZATION COLUMN FEED HEATER | | 20GA-17-S | LEAN AMINE HIGH PRESSURE FEED PUMPS | |
| 200A-03 | SOUR GAS ABSORBER | | 20EA-28 | RECYCLE GAS HEATER | | 20GA-18-S | LEAN AMINE LOW PRESSURE FEED PUMPS | |
| 200A-04 A/B | CARBON DIOXIDE OFF-GAS CLEAN-UP ABSORBER | | 20EA-29A/B/C/D | BLOWDOWN WATER COOLER | | 20GA-19-S | H2S RECOVERY RICH AMINE PUMPS | |
| 200A-05 | H2S RECOVERY ABSORBER | | 20EA-30 | BIONAPHTA STABILIZATION COLUMN REBOILER | | 20GA-20-S | H2S RECOVERY REGENERATOR BOTTOMS PUMPS | |
| 200A-06 | SOUR WATER STRIPPER | | 20EA-31 | MAKE-UP HYDROGEN PREHEATER | | 20GA-21-S | H2S RECOVERY REGENERATOR REFLUX PUMPS | |
| 200A-07 | TAIL GAS ABSORBER | | 20EA-32 A/B | MAKE-UP H2 TO ISO-REACTOR HEATER | | 40GA-09 | R/JF DRAIN PUMP | |
| 200A-08 | RICH AMINE STRIPPER | | 20EA-33 | BIONAPHTA STABILIZATION COLUMN DVHD CONDENSER | | 20GA-23-S | STRIPPED WATER PUMPS | |
| 200A-09 | BIONAPHTA STABILIZATION COLUMN | | 20EA-34 | H2S RECOVERY REGENERATOR DVHD GAS TRIM COOLER | | 20GA-26-S | ISOMERIZATION EFFLUENT PUMPS | |
| 200D-01 | AMINE REGENERATOR | | 20EA-35 | DIESEL STABILIZER STEAM SUPERHEATER | | 40GA-10 | STORM WATER DRAIN PUMP | |
| 200D-02 | H2S RECOVERY REGENERATOR | | 20EA-36 | LP FUEL GAS HEATER | | 20GA-30 | ISOMERIZATION STORM WATER PUMP | |
| 20GB-01 | H2S RECYCLE COMPRESSOR | | 20EC-01 | HYDROTREATING CIRCULATION COOLER | | 20GA-32 | CW CIRCULATION PUMP FOR 20EA-23 | |
| 20GB-02-S | RECYCLE GAS COMPRESSOR | | 20EC-02 | HYDROTREATING EFFLUENT TRIM COOLER | | 20GA-34-S | BIONAPHTA STABILIZATION COLUMN REFLUX PUMPS | |
| 20GB-03 | ISOMERIZATION HYDROGEN COMPRESSOR | | 20EC-03 | ISOMERIZATION EFFLUENT TRIM CONDENSER | | 20GA-39-S | WASH AMINE / WATER PUMPS | |
| 20EA-01 | HYDROTREATING CIRCULATION HEATER | | 20EC-04 | RECYCLE GAS COOLER | | 20GA-41 | FATTY ACID DISTILLATE PUMP | |
| 20EA-02 A/B/C/D | HYDROTREATING EFFLUENT PRE-CONDENSER | | 20EC-05 | NEWBLT PRODUCT AIR COOLER | | 20GA-42-S | SOUR WATER FEED PUMPS | |
| 20EA-03 | HYDROTREATING EFFLUENT TRIM COOLER | | 20EC-06 | DIESEL STABILIZATION COLUMN DVHD CONDENSER | | 20FA-01 | HYDROTREATING FEED DRUM | |
| 20EA-04 A/B | ISOMERIZATION FEED HEATER | | 20EC-07 | AMINE REGENERATOR DVHD CONDENSER | | 20FA-02 | HYDROTREATING 100% L - SEPARATOR | |
| 20EA-05 A/B | FEED HEATER | | 20EC-08 | LEAN AMINE COOLER | | 50EA-01 | ISOMERIZATION GAS / LIQUID SEPARATOR | |
| 20EA-06 A/B/C/D/E/F | ISOMERISATION EFFLUENT CONDENSER | | 20EC-10 | H2S RECOVERY REGENERATOR DVHD CONDENSER | | 50EA-04 | DIESEL STABILIZATION COLUMN DVHD DRUM | |
| 20EA-07 | DIESEL STABILIZATION COLUMN DVHD TRIM COOLER | | 20EC-01 | HYDROTREATING START-UP EJECTOR | EQUIPMENT NOT INDICATED ON PLOT PLAN | 20FA-06 | DEOILER DRUM | |
| 20EA-08 | BIONAPHTA PRODUCT COOLER | | 20EC-02 | ISOMERIZATION START-UP EJECTOR | EQUIPMENT NOT INDICATED ON PLOT PLAN | 20FA-07 | HC DRAINAGE COLLECTION DRUM | |
| 20EA-09 | WASTE HEAT BOILER | | 20EC-04 | LP FUEL GAS EJECTOR | EQUIPMENT NOT INDICATED ON PLOT PLAN | 20FA-08 | MEMBRANE FEED K.O. DRUM | |
| 20EA-10 | NEWBLT PRODUCT TRIM COOLER | | 20FD-01-S | COALESCER PRE-FILTER | | 20FA-09 | RECYCLE GAS K.O. DRUM | |
| 20EA-11 A/B/C | MAKE-UP H2 TO ISO-STRIPPER HEATER | | 20FD-02-S | FRESH FEED FILTER | | 40FA-03 | R/JF DRAIN DRUM | |
| 20EA-12 | MEMBRANE FEED HEATER | | 20GA-01-S | COALESCER PRE-FILTER | | 20FA-12 | AMINE REGENERATOR DVHD DRUM | |
| 20EA-13 | RECYCLE GAS TRIM COOLER | | 20GA-02-S | FRESH FEED FILTER | | 20FA-14 | H2S RECOVERY REGENERATOR DVHD DRUM | |
| 20EA-14/S | LEAN / RICH HEAT EXCHANGER | | 20FF-01 | RECYCLE GAS COALESCER | | 20FA-15 | SOUR WATER STRIPPER FEED DRUM | |
| 20EA-15 | LEAN AMINE REGENERATOR REBOILER | | 20FF-02-S | NEWBLT RENEWABLE DIESEL WATER COALESCER | | 20FA-16 | CAUSTIC HOLDING TANK | |
| 20EA-16 | LEAN AMINE TRIM COOLER | | 20GA-01-S | HYDROTREATING REACTOR FEED PUMPS | | 20FA-18 | BIONAPHTA STABILIZATION COLUMN DVHD DRUM | |
| 20EA-17 | AMINE REGENERATOR DVHD TRIM COOLER | | 20GA-02-S | HYDROTREATING EFFLUENT RECYCLE PUMPS | | 20FA-19 | WASH AMINE / WATER PUMPS | |
| 20EA-18/S | H2S RECOVERY LEAN / RICH HEAT EXCHANGER | | 20GA-03 A/B/C | HYDROTREATING CIRCULATION PUMPS | | 20FA-35 | FATTY ACID DISTILLATE FEED DRUM | |
| 20EA-19 | H2S RECOVERY REGENERATOR REBOILER | | 20GA-04 | HYDROTREATING INJECTION WATER PUMP | | 20FA-36 | ISOMERIZATION H2 COMPRESSOR KO DRUM | |
| 20EA-21-S | SOUR WATER STRIPPER FEED HEATER | | 20GA-05-S | ISOMERIZATION CIRCULATION PUMPS | | 20FA-37 | AMINE BUFFER ESSEL | |
| 20EA-22 | SOUR WATER STRIPPER REBOILER | REBOILER OF 20DA-06 | 20GA-06-S | RENEWABLE DIESEL PRODUCT PUMP | | 40GA-22-S | H2SO4 DOSING PUMPS | INCLUDED IN 60PK-06 |
| | | | 20GA-07-S | DIESEL STABILIZATION COLUMN REFLUX PUMP | | 40GA-23-S | NEUTRALIZING EFFLUENT PUMPS | INCLUDED IN 60PK-14 |
| | | | 20GA-08 | CLOSED DRAINAGE PUMP | | 40GA-24-S | NaOH DOSING PUMPS | |
| | | | 20GA-10-S | RECYCLE GAS K.O. DRUM DRAIN PUMPS | | 60PK-06 | H2SO4 DOSING PACKAGE FOR NEUTRALIZING TANK | |
| | | | | | | 60PK-14 | NaOH DOSING PACKAGE | |

| EQUIPMENT NO. | SERVICE | NOTE |
|---------------|--------------------------------------|--|
| 20DA-12 | R/JF SEPARATION COLUMN | EQUIPMENT NOT INDICATED ON PLOT PLAN |
| 20EA-101 | R/JF WASTE HEAT BOILER | EQUIPMENT NOT INDICATED ON PLOT PLAN |
| 20EA-102 | 20EA-101 BLOWDOWN WATER COOLER | EQUIPMENT NOT INDICATED ON PLOT PLAN |
| 20EA-104 | R/JF COLUMN DVHD TRIM COOLER | EQUIPMENT NOT INDICATED ON PLOT PLAN |
| 20EA-105 | R/JF COLUMN REBOILER | EQUIPMENT NOT INDICATED ON PLOT PLAN |
| 20EA-106A/B | R/JF PRODUCT TRIM COOLER | EQUIPMENT NOT INDICATED ON PLOT PLAN |
| 20EA-107 | VACUUM PUMP COOLING | NOT SHOWN ON PLOT PLAN-INCLUDED IN 20PK-19 |
| 20EC-09 | R/JF COLUMN DVHD CONDENSER | |
| 20EC-11 | R/JF PRODUCT AIR COOLER | |
| 20FA-86 | R/JF COLUMN DVHD DRUM | |
| 20FA-87 | VACUUM PUMP LIQUID / VAPOR SEPARATOR | NOT SHOWN ON PLOT PLAN-INCLUDED IN 20PK-19 |
| 20GA-09/S | RENEWABLE DIESEL BOOSTER PUMPS | |
| 20GA-28/S | R/JF COLUMN REFLUX PUMPS | |
| 20GA-31/S | R/JF COLUMN REFLUX PUMPS | |
| 20GA-33/S | R/JF COLUMN DVHD WATER PUMPS | |
| 20GA-69/S | VACUUM PUMP WATER CIRCULATION | NOT SHOWN ON PLOT PLAN-INCLUDED IN 20PK-19 |
| 20GA-69/S | R/JF COLUMN OVERHEAD OIL PUMPS | |
| 20GA-70/S | R/JF COLUMN NAPHTHA PUMPS | |
| 20GB-14/S | R/JF COLUMN VACUUM PUMPS | NOT SHOWN ON PLOT PLAN-INCLUDED IN 20PK-19 |
| 20PA-06 | 20EA-101 SILENER | |
| 20PK-08 | ANTIOXIDANT ADDITIVE PACKAGE | |
| 20PK-18 | ANTISTATIC ADDITIVE DOSING PACKAGE | |
| 20PK-19 | R/JF COLUMN VACUUM SYSTEM | |
| 55GA-02 | HOT OIL DRAIN PUMP | |

| GENERAL NOTES | | |
|---------------|---|---|
| 1. | COORDINATES ARE REFERRED TO PLANT NORTH THE ORIGIN OF THE SYSTEM IS THE OUTER NORTH-WEST CORNER OF THE PLANT (N=443093 / E=62008) CORRESPONDING TO N=1000000 / E=1000000 | |
| 2. | ALL DIMENSIONS AND ELEVATIONS ARE IN MILLIMETERS AND 360° DEGREES CIRCLE UNLESS OTHERWISE INDICATED | |
| 3. | ALL COORDINATES ARE IN METERS | |
| 4. | THE ELEVATION 100'000 IS EQUIVALENT +520 m N.A.P. IN PROCESS AREA (ZONE "A") THE HEIGHT POINT PAVING ELEVATION CORRESPOND TO 101300 | |
| 5. | T.L. T.O.C. C. T.O.S. H.P.P. E.L. F.S. | TANGENT LINE EQUIPMENT TOP OF CONCRETE CENTER LINE TOP OF STEEL HIGHEST PAVING POINT ELEVATION FIXED SADDLE |
| 6. | — — — — — | DENOTES BOUNDARY LIMIT |
| 7. | — X — X — | DENOTES FENCE LIMIT |
| 8. | — — — — — | DENOTES ZONE LIMIT |
| 9. | - - - - - | DENOTES AREA LIMIT |
| 10. | PREVAILING WIND DIRECTION SOUTH WEST | |
| 11. | — X — | DENOTES ROAD CROSSING |
| 12. | — > — | DENOTES COMPRESSORS |
| 13. | 20SS-XX | DENOTES EYES WASH AND SAFETY SHOWER |
| 14. | 20V-XX | DENOTES FIRE MONITOR BOX |
| 15. | — — — — — | DENOTES UPGRADING FOR PROJ.080871C |



| | | | | | | | | | |
|---|-------------|---|----------------|----------------|------------|-----------------|----------------|--------|---|
| 080871-A00-DW-0051-001-03 | | ZONE "A" & "AR" DETAILED PLOT ELEVATION | | | | | | | |
| 080871-A00-DW-0051-001-02 | | ZONE "A" & "AR" DETAILED PLOT PLAN | | | | | | | |
| 080871C-000-DW-1231-001-01 | | REFINERY GENERAL KEY PLAN | | | | | | | |
| 080871C-000-DW-0051-005-01 | | REFINERY GENERAL PLOT PLAN | | | | | | | |
| Drawing No | | DESCRIPTION | | | | | | | |
| REFERENCE DRAWINGS | | | | | | | | | |
| CONFIDENTIAL | | | | | | | | | |
| I | 14-JAN-2021 | ISSUED FOR PERMITTING | | SOLUANN | MUKEDON | LATRAL | | | |
| D | 05-NOV-2020 | ISSUED FOR REVIEW | | MFALLIN | F.MARELAND | AD VESTU/LONGON | | | |
| C | 01-07-2020 | ISSUED FOR REVIEW | | MFALLIN | F.MARELAND | AD VESTU/LONGON | | | |
| B | 21-MAY-2020 | ISSUED FOR BASIC OF DESIGN | | MFALLIN | F.MARELAND | REKUN/LONGON | | | |
| A | 18-MAR-2021 | ISSUED FOR REVIEW | | MFALLIN | F.MARELAND | REKUN/LONGON | | | |
| REV | DATE | AS RUN | | LONGERDOD | SMO | ADPR/UTH | | | |
| REV | DATE | DESCRIPTION | | PREP | CHK | APPR/AUTH | | | |
| NESTE | | | | | | | | | |
| ROTTERDAM SITE DEVELOPMENT DEFINITION PHASE NESTE | | | | | | | | | |
| ZONE "A" & "AR" | | | | | | | | | |
| DETAILED PLOT PLAN | | | | | | | | | |
| SCALE | | Drawing No | | | | Page | Rev | | |
| 1:250 | | 080871C Project | A00 Unit | DW Doc Type | 00 Disc | 51 Subj | 001 Ser No | 1 of 3 | 1 |
| Neste Drawing No | | | | | | | | | |
| 2305 Project | | A00 Unit | DW Doc Type | 00 Disc | 51 Subj | 01 Ser No | 1 of 3 Page | | |

PT: CAD MODEL: 080871C-A00-DW-0051-001-01-1.dwg