

Ligging Maasvlakte New Area en huidige site



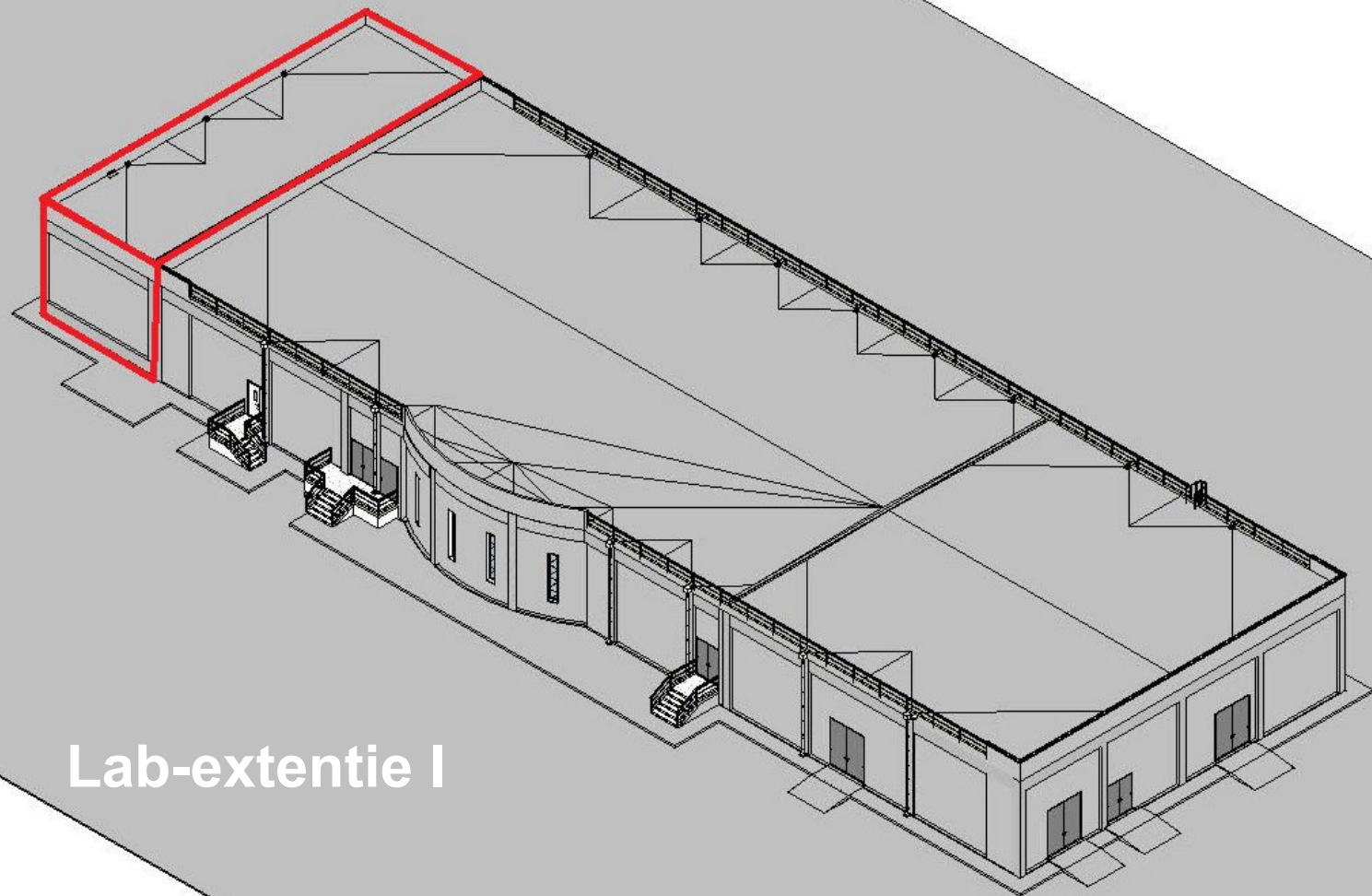
```

E= 1556.289 [LOCAL CC
N= 943.930 [LOCAL CC
E= 62360 [ABSOLUTE COOR
N= 442463 [ABSOLUTE COOR
E= 1534.740 [LOCAL COORDIN
N= 543.993 [LOCAL COORDIN
E= 623737.280 [ABSOLUTE COOR
N= 442472.100 [ABSOLUTE COOR
E= 798 [LOCAL COORDIN
N= 1042 [LOCAL COORDIN
E= 313.100 [ABSOLUTE COOR
N= 1481.700 [ABSOLUTE COOR
COORDINATE
COORDINATE

```

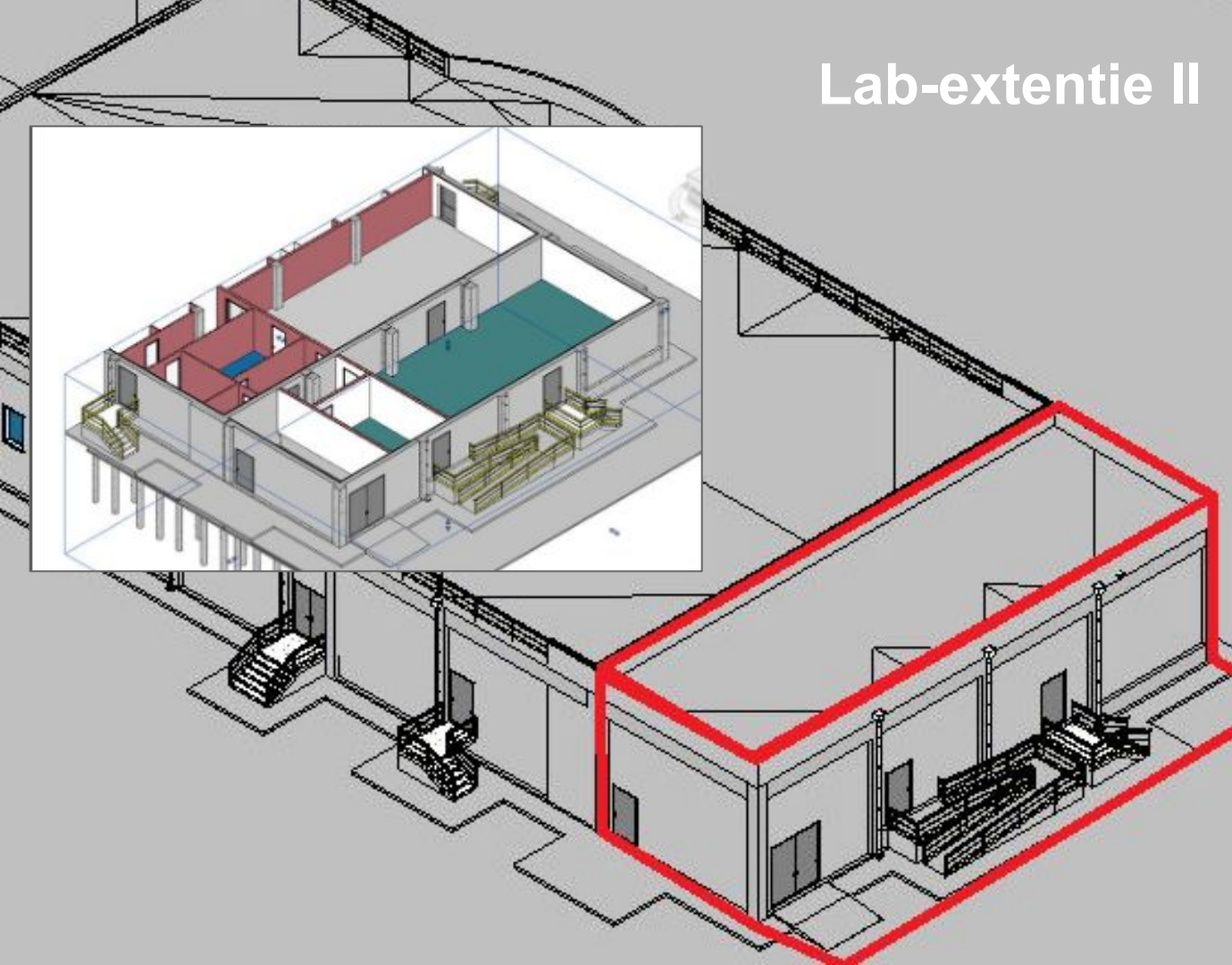
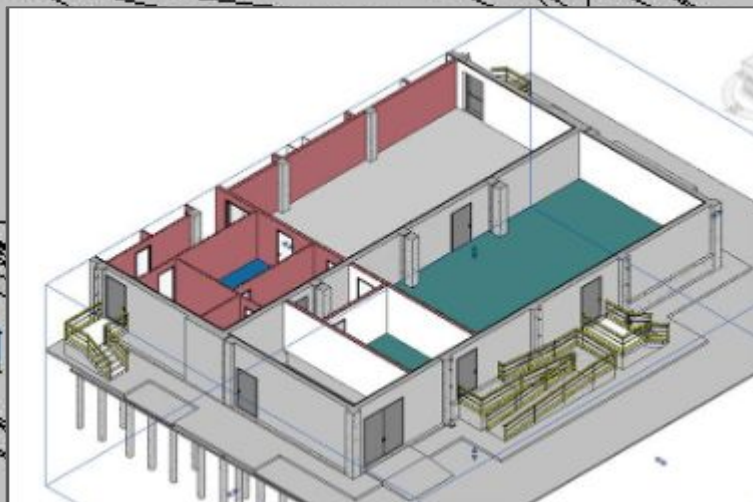


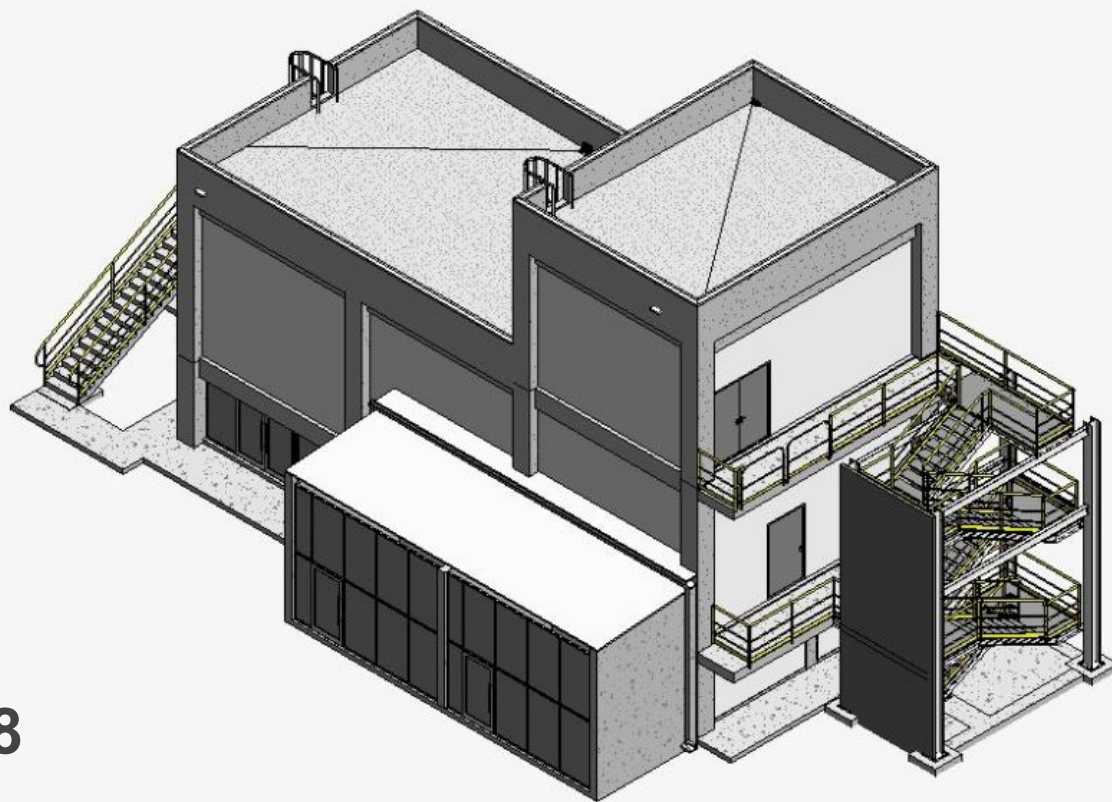

Gebouwen huidige site



Lab-extentie I

Lab-extentie II





Substation 8

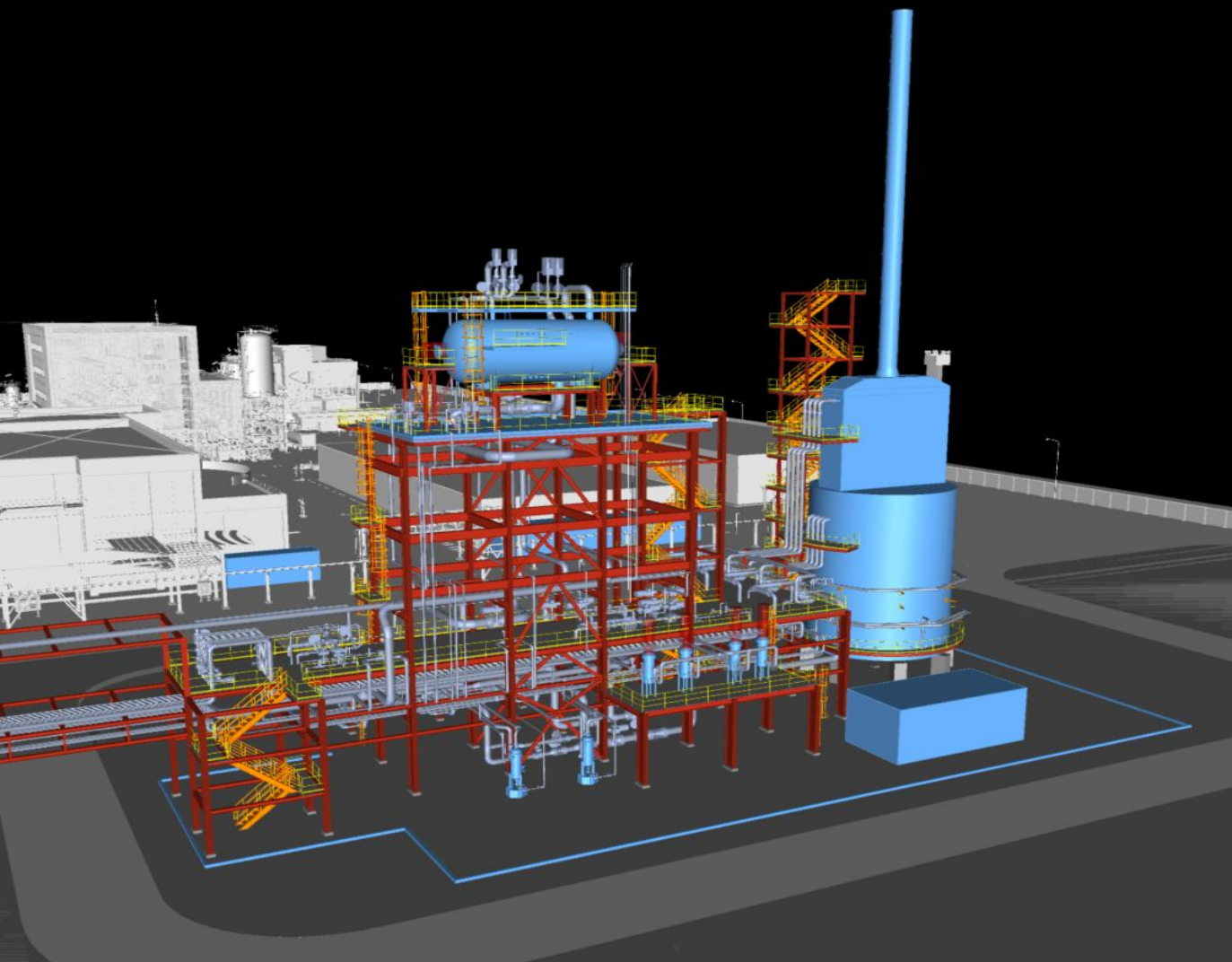


**Bouwwerken niet
zijnde gebouwen
huidige site**

Overview



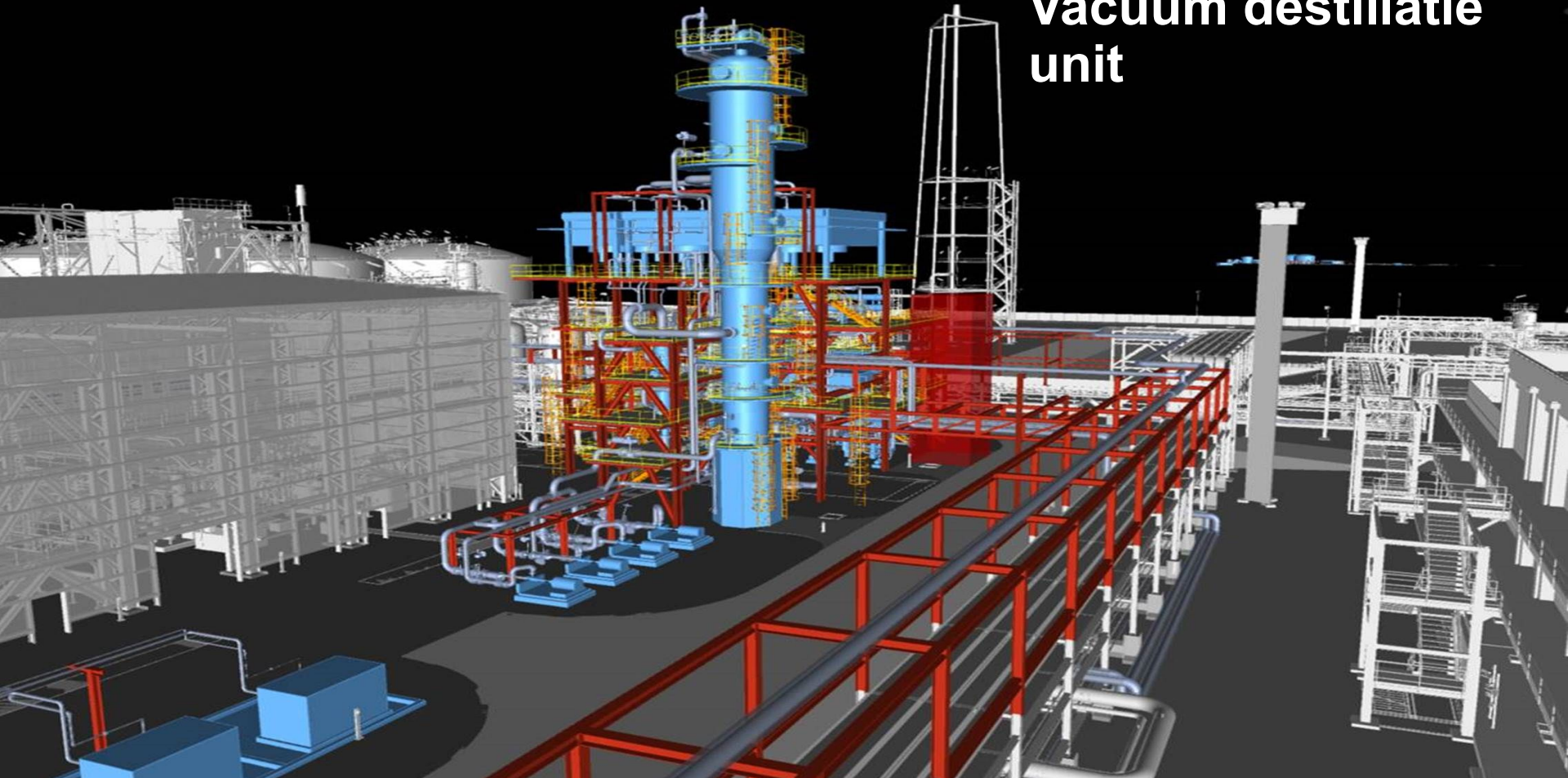
Hot oil furnuis

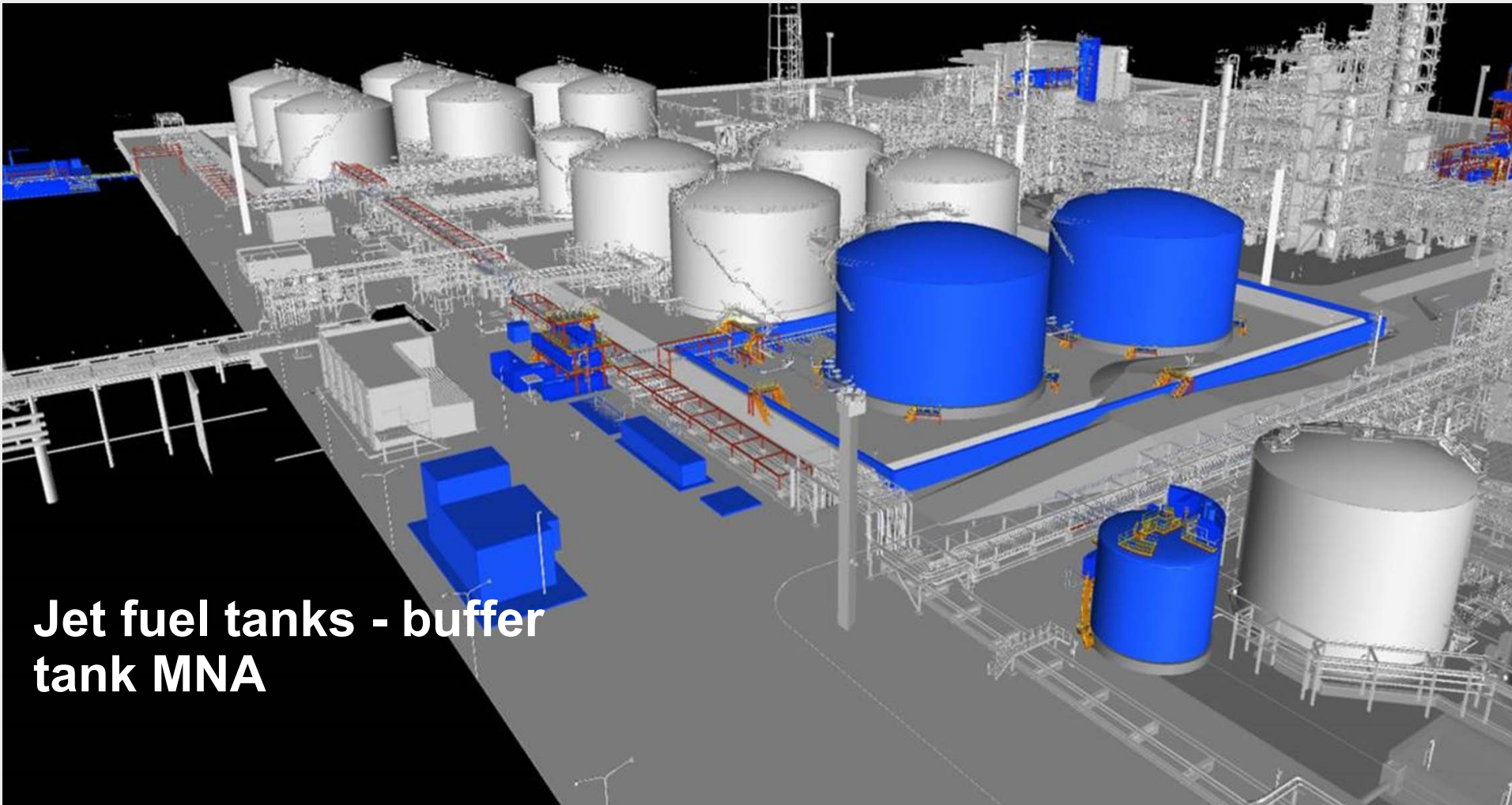


jet fuel unit



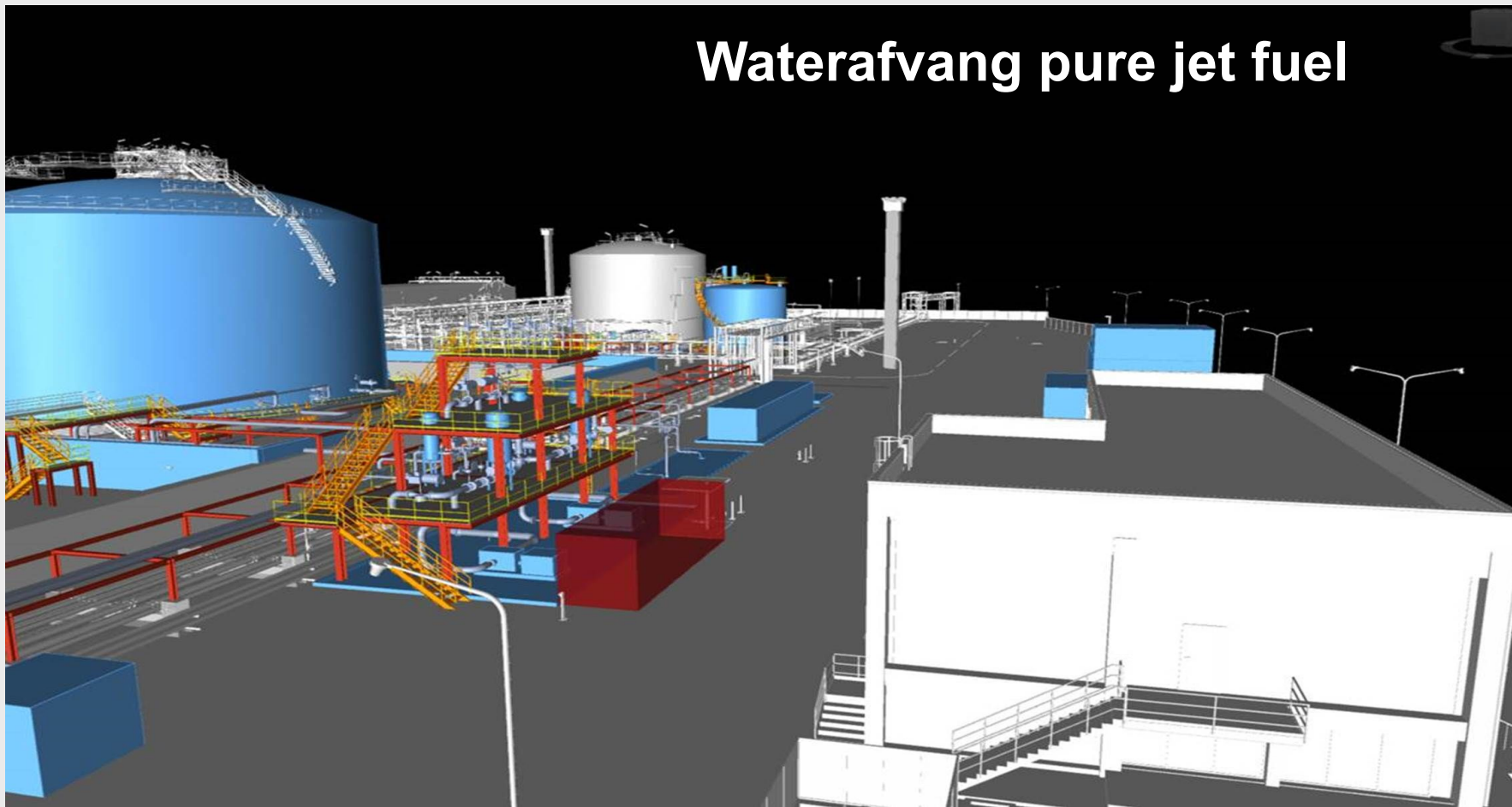
Vacuum destillatie unit

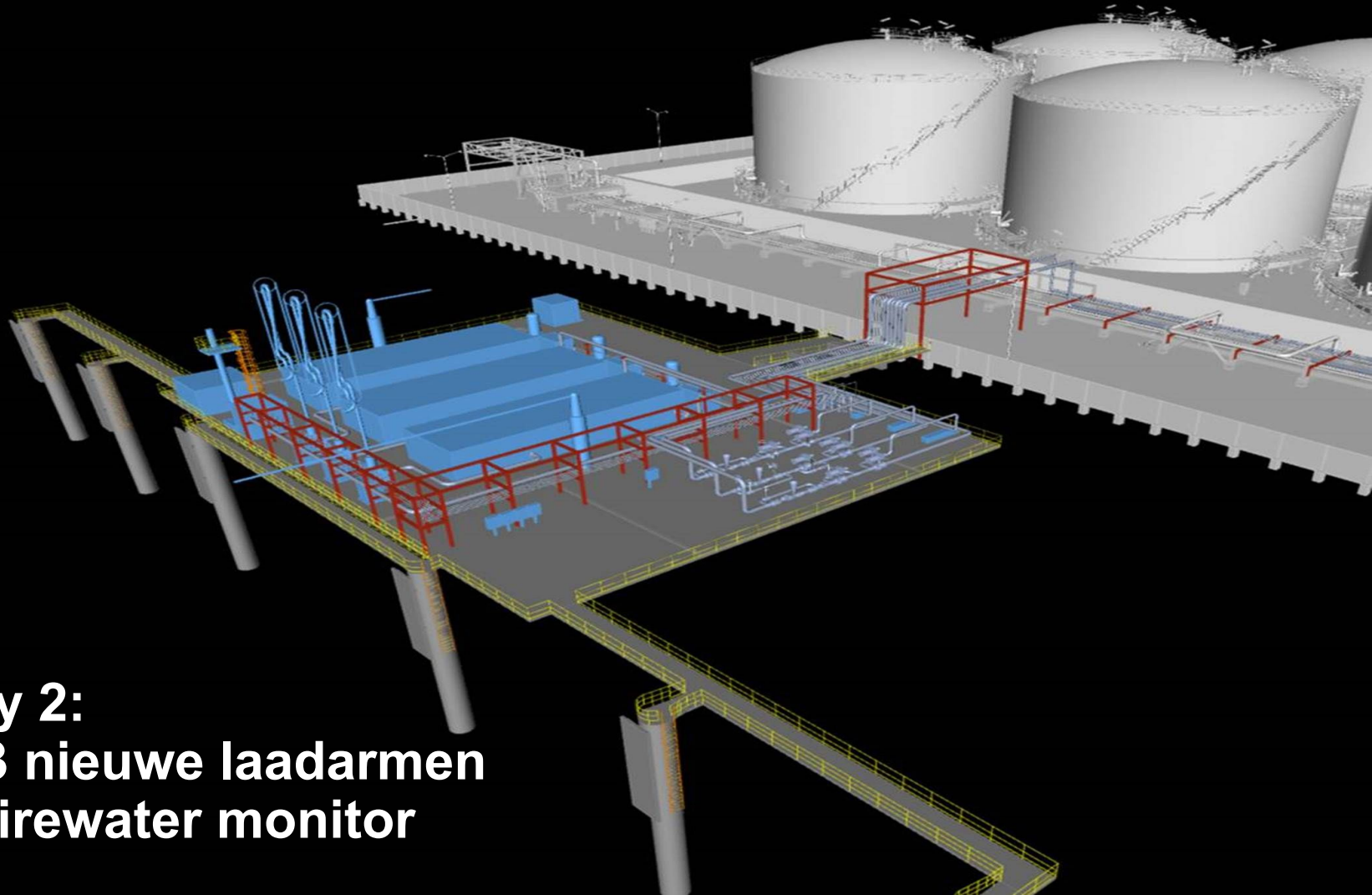




**Jet fuel tanks - buffer
tank MNA**

Waterafvang pure jet fuel





Jetty 2:

- 3 nieuwe laadarmen
- firewater monitor



Thank you