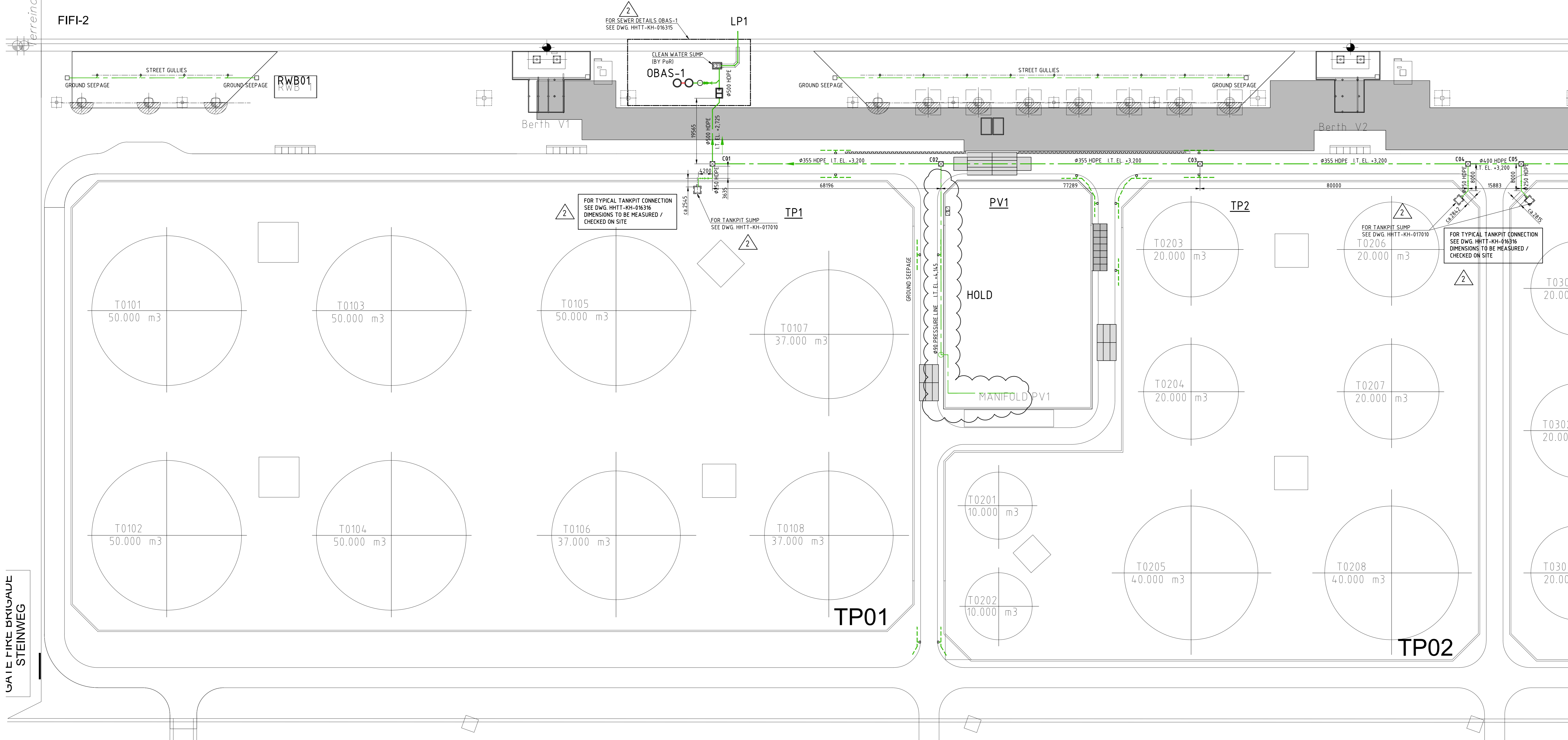
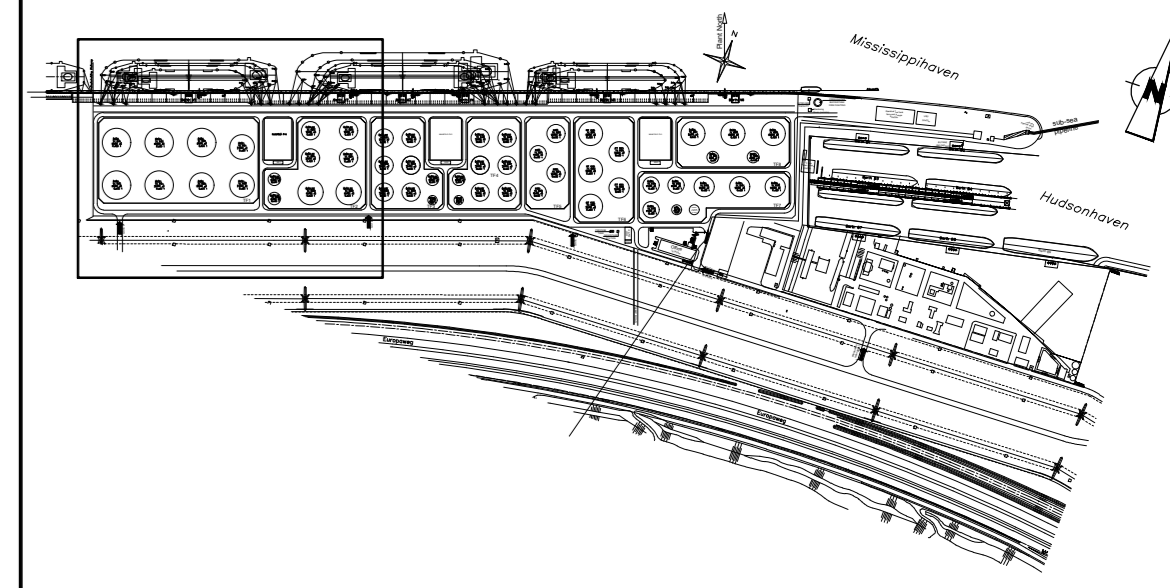


Verreinfaßsch.
GATE FIRE BRIGADE
STEINWEG

FIFI-2



KEY-PLAN



GENERAL NOTES

- ALL DIMENSIONS IN MM
- ELEVATION IN M ACC. TO N.A.P.
FOR COATING AND PAINTING STANDPIPE / INDICATOR SEE PAINTING SPECIFICATION

LEGEND

- CLEAN WATER SEWER (HDPE)
- FOUL WATER SEWER (HDPE)
- FOUL WATER PRESSURE LINE (HDPE)
- FOUL WATER INTERMEDIATE BUFFER LINE (HDPE)
- FLOW DIRECTION
- MANHOLE 1400x1400mm WITH CAST IRON COVER (D400)
- VALVE NORMALLY CLOSED
- UNDERGROUND VALVE WITH INDICATOR POST
- GATE VALVE KENNEDY 7781 WITH P.1 PLATE PN16
- INDICATOR POST KENNEDY FIG. 2945A (OR EQUAL)
- BODY CAST IRON ASTM A126 CLASS B
- SLUICE GATE
- STREET GULLY 300x450 WHERE INDICATED
- LP2 CLEAN WATER DISCHARGE POINT (2)
- CHECK VALVE
- 25 SUBMERGED SEWER PUMP (25m³/h)
- STREET GULLY FOR GROUND SEEPAGE
- I.T. INSIDE TOP

REFERENCE DRAWINGS

- | | |
|----------------|---|
| HHTT-KH-016305 | UNDERGROUND ROAD SECTIONS PART 1 |
| HHTT-KH-016306 | UNDERGROUND ROAD SECTIONS PART 2 |
| HHTT-KH-016307 | UNDERGROUND ROAD SECTIONS PART 3 |
| HHTT-KH-016311 | UNDERGROUND GENERAL SEWER LAYOUT PART 1 |
| HHTT-KH-016312 | UNDERGROUND GENERAL SEWER LAYOUT PART 2 |
| HHTT-KH-016313 | UNDERGROUND GENERAL SEWER LAYOUT PART 3 |
| HHTT-KH-016314 | UNDERGROUND GENERAL SEWER LAYOUT PART 4 |
| HHTT-KH-016315 | UNDERGROUND SEWER DETAILS 1 |
| HHTT-KH-016316 | UNDERGROUND SEWER DETAILS 2 |
| HHTT-KH-016317 | CLEAN AND FOUL WATER SUMPS |

RELEASED FOR DETAIL DESIGN

KHEngineering 67620-D-14-16-1100-351

HES
HES Harbel Tank Terminal
Released for Detail Design
16 October 2019
HHTT Document Control

REV.	DATE	DESCRIPTION	DRAWN	CHECK	APP'D
2	11-30-2019	REFERENCES ADDED	BBS	ROW	HHTT
1	15-06-2019	REVISED AS INDICATED	EPA	ROW	ROW
0	05-01-2019	FOR DETAIL DESIGN	EPA	ROW	ROW

PROJECT: HHTT
CLIENT: HES Harbel Tank Terminal B.V.
TITLE: GENERAL LAY OUT
UNDERGROUND CLEAN WATER SEWER LAYOUT (PART 1)
PROJ. No.: 67620-001
SCALE: 1:500
DRAWING No.: HHTT-KH-016315
SHEET: 1/1
REV: 2

